

Appendices

A Estimands

Table S1. Estimands of the observational study emulating target trial

Estimand component	Description
Estimand 1	
Population	Adults with non-valvular atrial fibrillation receiving anticoagulants meeting eligibility criteria
Variable of interest	Composite of stroke (Ischemic or hemorrhagic) or systemic embolism
Treatments	Apixaban (2.5/5 mg) versus Warfarin adjusted to target an INR of (2.0-3.0)
Population level summary	BMI stratum specific Risk ratios and Risk differences
Intercurrent events (strategies to handle them)	1- Treatment discontinuation (treatment policy strategy) 2- Treatment switching (treatment policy strategy)
Estimand 2	
Population	Adults with non-valvular atrial fibrillation receiving anticoagulants meeting eligibility criteria
Variable of interest	Major bleeding
Treatments	Apixaban (2.5/5 mg) versus Warfarin adjusted to target an INR of (2.0-3.0)
Population level summary	BMI stratum specific Risk ratios and Risk differences
Intercurrent events (strategies to handle them)	1- Treatment discontinuation (hypothetical strategy) 2- Treatment switching (hypothetical policy strategy)
Estimand 3	
Population	Adults with non-valvular atrial fibrillation receiving anticoagulants meeting eligibility criteria
Variable of interest	Ischemic or hemorrhagic stroke
Treatments	Apixaban (2.5/5 mg) versus Warfarin adjusted to target an INR of (2.0-3.0)

Population level summary	BMI stratum specific Risk ratios and Risk differences
Intercurrent events (strategies to handle them)	1- Treatment discontinuation (treatment policy strategy) 2- Treatment switching (treatment policy strategy)

Estimand 4

Population	Adults with non-valvular atrial fibrillation receiving anticoagulants meeting eligibility criteria
Variable of interest	Ischemic stroke
Treatments	Apixaban (2.5/5 mg) versus Warfarin adjusted to target an INR of (2.0-3.0)
Population level summary	BMI stratum specific Risk ratios and Risk differences
Intercurrent events (strategies to handle them)	1- Treatment discontinuation (treatment policy strategy) 2- Treatment switching (treatment policy strategy)

Estimand 5

Population	Adults with non-valvular atrial fibrillation receiving anticoagulants meeting eligibility criteria
Variable of interest	Hemorrhagic stroke
Treatments	Apixaban (2.5/5 mg) versus Warfarin adjusted to target an INR of (2.0-3.0)
Population level summary	BMI stratum specific Risk ratios and Risk differences
Intercurrent events (strategies to handle them)	1- Treatment discontinuation (treatment policy strategy) 2- Treatment switching (treatment policy strategy)

Estimand 6

Population	Adults with non-valvular atrial fibrillation receiving anticoagulants meeting eligibility criteria
Variable of interest	Systemic embolism
Treatments	Apixaban (2.5/5 mg) versus Warfarin adjusted to target an INR of (2.0-3.0)
Population level summary	BMI stratum specific Risk ratios and Risk differences

Intercurrent events (strategies to handle them)	1- Treatment discontinuation (treatment policy strategy) 2- Treatment switching (treatment policy strategy)
--	--

Estimand 7

Population	Adults with non-valvular atrial fibrillation receiving anticoagulants meeting eligibility criteria
Variable of interest	Mortality
Treatments	Apixaban (2.5/5 mg) versus Warfarin adjusted to target an INR of (2.0-3.0)
Population level summary	BMI stratum specific Risk ratios and Risk differences
Intercurrent events (strategies to handle them)	1- Treatment discontinuation (treatment policy strategy) 2- Treatment switching (treatment policy strategy)

Estimand 8

Population	Adults with non-valvular atrial fibrillation receiving anticoagulants meeting eligibility criteria
Variable of interest	Composite of stroke (Ischemic or hemorrhagic) or systemic embolism
Treatments	Apixaban (2.5/5 mg) versus Warfarin adjusted to target an INR of (2.0-3.0)
Population level summary	BMI stratum specific Risk ratios and Risk differences
Intercurrent events (strategies to handle them)	1- Treatment discontinuation (hypothetical strategy) 2- Treatment switching (hypothetical policy strategy)

B Target trial protocol

Table S2. Brief protocol of target trial emulation

Protocol component	ARISTOTLE	Target trial	Observational analysis
Eligibility criteria	<p>Inclusion criteria</p> <ul style="list-style-type: none"> - Age ≥ 18 y between December 19, 2006, through April 2, 2010 - Permanent or persistent AF or atrial flutter on ECG at enrollment; or AF or atrial flutter documented by ECG or as an episode ≥ 1 min on rhythm strip, Holter monitor, or intracardiac recording on 2 separate occasions at least 2 week apart in 12 months before enrollment - One or more of the following risk factors for stroke: <ul style="list-style-type: none"> Age ≥ 75 y Prior stroke, TIA, or systemic embolus Symptomatic CHF within 3 mo or LV dysfunction with LVEF $\leq 40\%$ by echocardiography, radionuclide study, or contrast angiography Diabetes mellitus Hypertension requiring pharmacologic treatment 	<ul style="list-style-type: none"> - Same as ARISTOTLE apart from: <ul style="list-style-type: none"> - Study period from 01/01/2013 to 31/07/2019 - Only in patients from England with EHR in CPRD Aurum and linkage to HES and ONS linked patients. - Registered with a practice contributing research quality data for at least 6 months on or prior to the index date. - Permanent or persistent AF documentation using ECG is not assessed - Three additional stroke risk factors: Age 64-75, female and vascular disease (i.e. CHA₂DS₂-VASc instead of CHADS 2) 	<ul style="list-style-type: none"> - Same as target trial apart from: <ul style="list-style-type: none"> - No informed consent is required but patients might opt-out of data sharing

(continued)

Protocol component	ARISTOTLE	Target trial	Observational analysis
	<ul style="list-style-type: none">- Women of childbearing potential must use contraception to avoid pregnancy during treatment period or for 2 wk after last dose of study medication, whichever is longer- All subjects must provide signed written informed consent- Exclusion criteria- AF or atrial flutter due to reversible causes- Clinically significant (moderate or severe) mitral stenosis- Increased bleeding risk believed to be a contraindication to oral anticoagulation (eg, previous intracranial hemorrhage)- Conditions other than AF that require chronic anticoagulation (eg, prosthetic mechanical heart valve)- Persistent uncontrolled hypertension (SBP 180mmHg or DBP 100mmHg)- Active infective endocarditis	<ul style="list-style-type: none">- No contraception is required from women of childbearing age but any women with history of breastfeeding or pregnancy in last two years prior to index date was excluded- No assessment of planned procedure- No exclusion for: - Patients with presistent uncontrolled hypertension- Severe comorbid condition with life expectancy ≤ 1 year- Active alcohol or drug abuse or psychosocial reasons that make study participation impractical- No assessment of planned procedure- No exclusion for: - Patients with presistent uncontrolled hypertension	

(continued)

Protocol component	ARISTOTLE	Target trial	Observational analysis
	- Planned major surgery	- Severe comorbid condition	
	- Planned AF or atrial flutter ablation procedure	with life expectancy ≤ 1 year	
	- Use of unapproved investigational drug or device in past 30 days	- Active alcohol or drug abuse or psychosocial reasons that make study participation impractical	
	- Required aspirin 165 mg/d	- Severe renal insufficiency	
	- Simultaneous treatment with both aspirin and a thienopyridine (eg, clopidogrel, ticlopidine)	(serum creatinine level ≥ 2.5 mg/dL or calculated creatinine clearance <25 mL/min)	
	- Severe comorbid condition with life expectancy ≤ 1 year	- ALT or AST $2 \times$ ULN or a total bilirubin $\geq 1.5 \times$ ULN	
	- Active alcohol or drug abuse or psychosocial reasons that make study participation impractical	(unless an alternative causative factor [eg, Gilbert's syndrome] is identified)	
	- Recent stroke (within 7 days)	- Platelet count \leq	
	- Severe renal insufficiency (serum creatinine level ≥ 2.5 mg/dL or calculated creatinine clearance <25 mL/min)	100,000/mm ³	
	- ALT or AST $2 \times$ ULN or a total bilirubin $\geq 1.5 \times$ ULN (unless an alternative causative factor [eg, Gilbert's syndrome] is identified)	- Hemoglobin level <9 g/dL	
	- Platelet count $\leq 100,000$ /mm ³	- No assessment of use of unapproved investigational drug or device in past 30 days	
	- Hemoglobin level <9 g/dL	Any history of symptomatic CHF or LV dysfunction	
	- Inability to comply with INR monitoring	- No assessment of inability to comply with INR monitoring	

(continued)

Protocol component	ARISTOTLE	Target trial	Observational analysis
Treatment strategies	<p>1- Starting Apixaban or matching placebo twice daily, with apixaban given in 5-mg doses; 2.5-mg doses were used in a subset of patients with two or more of the following criteria:</p> <ul style="list-style-type: none">- an age of at least 80 years,- a body weight of no more than 60 kg, or- a serum creatinine level of 1.5 mg per deciliter (133 μmol per liter) or more.	<p>1- Same as ARISTOTLE</p>	<p>Same as target trial</p>
	<p>2- Warfarin (or matching placebo) as 2-mg tablets adjusted to achieve a target international normalized ratio (INR) of 2.0 to 3.0. Patients who are already receiving a vitamin K antagonist before randomization were instructed to discontinue the drug 3 days before randomization, and the study drug was initiated when the INR was less than 2.0.</p>	<p>2- Warfarin tablets adjusted to achieve a target international normalized ratio (INR) of 2.0 to 3.0. – Did not include patients already receiving vitamin K antagonists so no washout period</p>	<p>Same as target trial</p>

(continued)

Protocol component	ARISTOTLE	Target trial	Observational analysis
Assignment procedure	Participants will be randomized to a treatment strategy while not being aware of the assigned strategy	Participants will be randomized to a treatment strategy and are aware of the assigned strategy	Participants' strategies were classified according to the observed data at baseline while adjusting for the confounders using inverse probability treatment weighting to emulate randomization

(continued)

Protocol component	ARISTOTLE	Target trial	Observational analysis
Outcomes	<p>Efficacy outcomes:</p> <p>The primary efficacy outcome is:</p> <ul style="list-style-type: none">- Time to first occurrence of stroke (ischemic or haemorrhagic) or systemic embolism. <p>The key secondary efficacy outcomes:</p> <ul style="list-style-type: none">- death from any cause.- rate of myocardial infarction <p>Safety outcomes:</p> <ul style="list-style-type: none">- Major bleeding,- Composite of major bleeding and clinically relevant nonmajor bleeding.- Any bleeding, other adverse events, and liver-function abnormalities	<p>Same as ARISTOTLE away from:</p> <ul style="list-style-type: none">- Myocardial infarction, any bleeding, other adverse events, and liver-function abnormalities will not be assessed	<p>Same as target trial</p> <p>Outcomes recorded using ICD-10 codes</p>
Follow-up period	<p>Start at randomization and ends at the earliest of death, withdrawal of consent to be followed-up, loss to follow-up or the study end date.</p>	<p>Same as ARISTOTLE</p>	<p>Same as target apart from withdrawal of consent</p>
Causal contrasts of interest	<p>Intention-to-treat for efficacy and safety population for safety</p>	<p>A treatment policy estimand for effectiveness and a hypothetical estimand for major bleeding</p>	<p>Observational analogue of specified estimands</p>

(continued)

Protocol component	ARISTOTLE	Target trial	Observational analysis
Statistical analysis plan	<ul style="list-style-type: none">- Non-inferiority hypothesis required that apixaban upper boundary of the 95% confidence interval for the relative risk would be less than 1.38 for primary efficacy outcome- Relative risk was calculated using Cox proportional-hazards model, with previous warfarin status and geographic region used as strata in the model.- Event rates will be estimated and plotted over time using Kaplan-Meier methodology.- Subgroup analyses:<ul style="list-style-type: none">- Prior warfarin/VKA status - Apixaban dose - Geographic Region - Age - Gender - Race - Ethnicity - Weight - Level of Renal Impairment - Number of risk factors - CHADS2 Score - Prior Stroke or TIA - Age \geq 75- Diabetes Mellitus - Hypertension requiring pharmacological treatment - Heart Failure - Aspirin at randomization	<ul style="list-style-type: none">- Same as ARISTOTLE apart from:<ul style="list-style-type: none">- Geographic region will not be used as strata in the model.- The analysis will be stratified by BMI groups- No subgroup analyses. Risk ratios and risk differences will be estimated through a weighted IPW estimator that coincides with Aalen-Johansen estimator for total effects and a weighted Kaplan-Meier estimator for direct effectsCummulative incidence figures will be reportedNon-inferiority margin will not be used due to differences in study population	Same as target trial with adjustment for baseline confounders using inverse probability treatment weighting and for censoring inverse probability weighting in each outcome

C Variables

Table S3. Variables definition in the study

Variables	Definition	Levels (form used in analysis)	Data source	Outcome ICD-10 Codes
Treatments	First prescription of study treatments	1: Apixaban; 2: Warfarin	CPRD Aurum	
Stroke/SE	First event of stroke or systemic embolism during follow-up	0: No; 1: Yes	HES APC	I60.1, I60.2, I60.3, I60.4, I60.5, I60.6, I60.7, I60.8, I60.9, I61.0, I61.1, I61.2, I61.3, I61.4, I61.5, I61.6, I61.7, I61.8, I61.9, I62.0, I62.1, I62.9, I63.0, I63.1, I63.2, I63.3, I63.4, I63.5, I63.6, I63.8, I63.9, I64, I74.0, I74.1, I74.2, I74.3, I74.4, I74.5, I74.8, I74.9

(continued)

Variables	Definition	Levels (form used in analysis)	Data source	Outcome ICD-10 Codes
Stroke (any type)	First event of is-chemic/hemorrhagic stroke during follow-up	0: No; 1: Yes	HES APC	I60.1, I60.2, I60.3, I60.4, I60.5, I60.6, I60.7, I60.8, I60.9, I61.0, I61.1, I61.2, I61.3, I61.4, I61.5, I61.6, I61.7, I61.8, I61.9, I62.0, I62.1, I62.9, I63.0, I63.1, I63.2, I63.3, I63.4, I63.5, I63.6, I63.8, I63.9, I64
Ischemic stroke	First event of ischemic stroke during follow-up	0: No; 1: Yes	HES APC	I63.0, I63.1, I63.2, I63.3, I63.4, I63.5, I63.6, I63.8, I63.9, I64
Hemorrhagic stroke	First event of hemorrhagic stroke during follow-up	0: No; 1: Yes	HES APC	I60.1, I60.2, I60.3, I60.4, I60.5, I60.6, I60.7, I60.8, I60.9, I61.0, I61.1, I61.2, I61.3, I61.4, I61.5, I61.6, I61.7, I61.8, I61.9, I62.0, I62.1, I62.9

(continued)

Variables	Definition	Levels (form used in analysis)	Data source	Outcome ICD-10 Codes
Systematic embolism	First event of systemic embolism during follow-up	0: No; 1: Yes	HES APC	I74.0, I74.1, I74.2, I74.3, I74.4, I74.5, I74.8, I74.9

(continued)

Variables	Definition	Levels (form used in analysis)	Data source	Outcome ICD-10 Codes
Major bleeding	First event of major bleeding during follow-up	0: No; 1: Yes	HES APC	D68.3, H35.6 H43.1, H45.0, I60.0, I60.1, I60.2, I60.3, I60.4, I60.5, I60.6, I60.7, I60.8, I60.9, I61.0, I61.1, I61.2, I61.3, I61.4, I61.5, I61.6, I61.8, I61.9, I62.0, I62.1, I62.9, I85.0, I98.3, K25.0, K25.2, K25.4, K25.6, K26.0, K26.2, K26.4, K26.6, K27.0, K27.4, K27.6, K28.0, K28.2, K28.4, K28.6, K29.0, K62.5, K66.1, K92.0, K92.1, K92.2, M25.0, N02.0, N02.1, N02.2, N02.3, N02.4, N02.5, N02.7, N02.8, N02.9, N93.8, N93.9, N95.0, R04.1, R04.2, R04.8, R04.9, R58
Death	Death within follow-up period	0: No; 1: Yes	ONS	

(continued)

Variables	Definition	Levels (form used in analysis)	Data source	Outcome ICD-10 Codes
Age	Patient age at enrollment assuming mid year birth	Numeric (Linear, quadratic)	CPRD Aurum	
Gender	Patient gender	1: Male; 2: Female	CPRD Aurum	
Individual level multiple deprivation (2015)	Individual socioeconomic status mapped to postcode of residence according to 2015 English Index of Multiple Deprivation	1 (least deprived), 2, 3, 4, 5 (most deprived)	CPRD Aurum	
Practice level multiple deprivation (2015)	Practice socioeconomic status mapped to postcode according to 2015 English Index of Multiple Deprivation	1 (least deprived), 2, 3, 4, 5 (most deprived)	CPRD Aurum	

(continued)

Variables	Definition	Levels (form used in analysis)	Data source	Outcome ICD-10 Codes
BMI	Lat observation prior to index date	Numeric	CPRD Aurum	
BMI groups	Grouped BMI	1:Normal weight; 2:Overweight; 3:Obese	CPRD Aurum	
Smoking status	Any history at baseline	1:Non- smoker; 2:Ex-smoker; 3:Current- smoker	CPRD Aurum	
Alcohol	Alcohol consumption at baseline	1:Non- drinker; 2:Light- drinker; 3:Moderate- drinker; 4:Heavy- drinker	CPRD Aurum	
Ethnic groups	Ethnic group	1:Black; 2:East Asian; 3:Mixed; 4:Other; 5: South Asian; 6:White	CPRD Aurum	

(continued)

Variables	Definition	Levels (form used in analysis)	Data source	Outcome ICD-10 Codes
Renal function	Renal function based on last creatinine clearance measurement prior to index date	1:Normal; 2:Mild impairment; 3:Moderate impairment; 4:Severe impairment	CPRD Aurum	
Index year	Year of first prescription of study treatments	1:2013; 2:2014; 3:2015; 4:2016; 5:2017; 6:2018; 7:2019	CPRD Aurum	
Prior stroke	Any history at baseline	0: No; 1: Yes	CPRD Aurum and HES APC	
Prior transient ischemic attack	Any history at baseline	0: No; 1: Yes	CPRD Aurum and HES APC	
Prior systemic embolism	Any history at baseline	0: No; 1: Yes	CPRD Aurum and HES APC	

(continued)

Variables	Definition	Levels (form used in analysis)	Data source	Outcome ICD-10 Codes
Congestive heart failure or left ventricular dysfunction (LVEF)	Any history at baseline or LVEF value less than or equal to 40%	0: No; 1: Yes	CPRD Aurum and HES APC	
Diabetes	Any history at baseline	0: No; 1: Yes	CPRD Aurum	
Hypertension requiring treatment	Any history at baseline	0: No; 1: Yes	CPRD Aurum	
History of Prephiral artery disease	Any history at baseline	0: No; 1: Yes	CPRD Aurum and HES APC	
History of Aortic plaue	Any history at baseline	0: No; 1: Yes	CPRD Aurum and HES APC	
History of non-major bleeding	History prior to index date	0: No; 1: Yes	CPRD Aurum and HES APC	
History of myocardial Infarction	Any recored in patient file at baseline	0: No; 1: Yes	CPRD Aurum and HES APC	
History of Chronic obstructive disease	Any recored in patient file at baseline	0: No; 1: Yes	CPRD Aurum and HES APC	

(continued)

Variables	Definition	Levels (form used in analysis)	Data source	Outcome ICD-10 Codes
History of Liver disease	Any recored in patient file at baseline	0: No; 1: Yes	CPRD Aurum and HES APC	
History of Hematological cancer	Any recored in patient file at baseline	0: No; 1: Yes	CPRD Aurum and HES APC	
History of valve surgery	Any recored in patient file at baseline	0: No; 1: Yes	CPRD Aurum and HES APC	
History of Connective tissue diseases	Any recored in patient file at baseline	0: No; 1: Yes	CPRD Aurum and HES APC	
History of Hemiplegia	Any recored in patient file at baseline	0: No; 1: Yes	CPRD Aurum and HES APC	
History of Peptic ulcer	Any recored in patient file at baseline	0: No; 1: Yes	CPRD Aurum and HES APC	
History of solid cancer diagnosis	Any recored in patient file at baseline	0: No; 1: Yes	CPRD Aurum and HES APC	
History of valvular disease	Any recored in patient file at baseline	0: No; 1: Yes	CPRD Aurum and HES APC	

(continued)

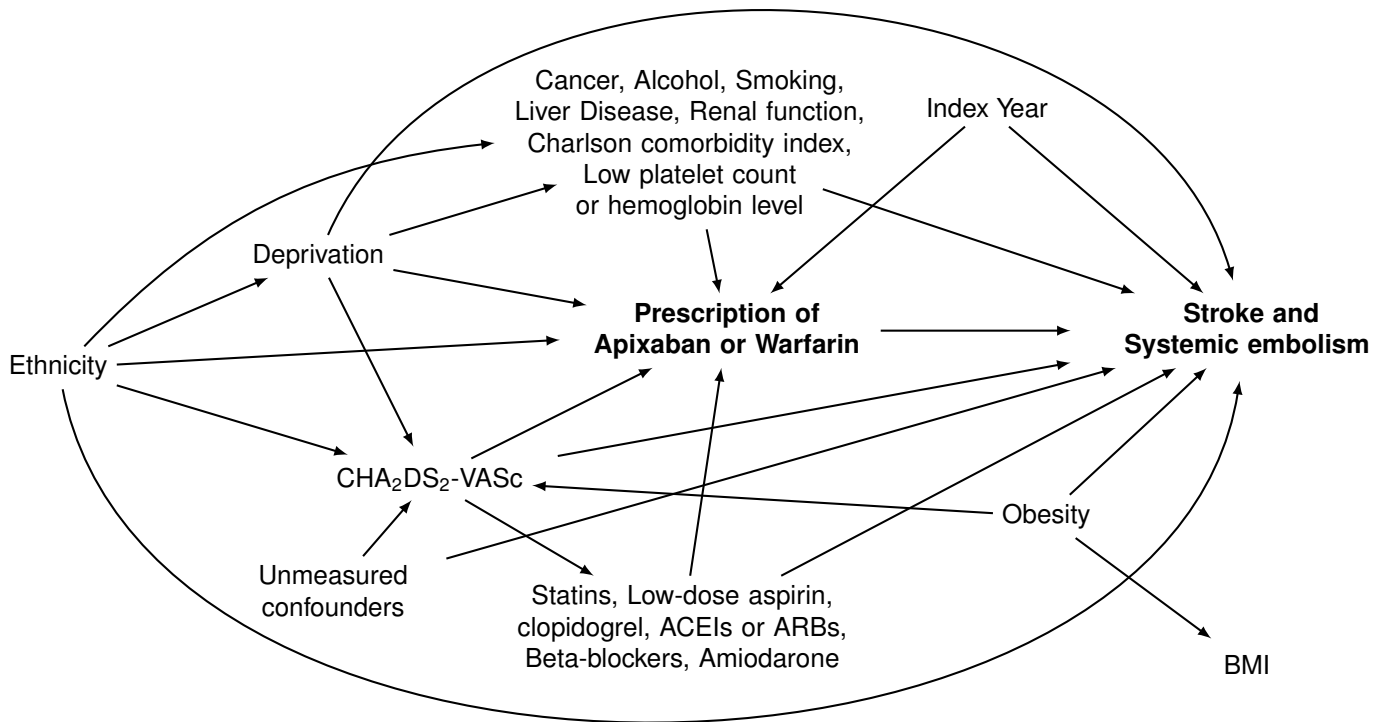
Variables	Definition	Levels (form used in analysis)	Data source	Outcome ICD-10 Codes
Use of Amiodarone	Concomitant use at baseline	0: No; 1: Yes	CPRD Aurum	
Use of aspirin	Concomitant use at baseline	0: No; 1: Yes	CPRD Aurum	
Use of antacids	Concomitant use at baseline	0: No; 1: Yes	CPRD Aurum	
Use of Angiotensin-converting enzyme inhibitors and angiotensin II receptor blockers	Concomitant use at baseline	0: No; 1: Yes	CPRD Aurum	
Use of beta-blocker	Concomitant use at baseline	0: No; 1: Yes	CPRD Aurum	
Use of Clopidogrel	Concomitant use at baseline	0: No; 1: Yes	CPRD Aurum	
Use of digoxin	Concomitant use at baseline	0: No; 1: Yes	CPRD Aurum	

(continued)

Variables	Definition	Levels (form used in analysis)	Data source	Outcome ICD-10 Codes
Use of non-steroidal anti- inflammatory drugs	Concomitant use at baseline	0: No; 1: Yes	CPRD Aurum	
Use of Statins	Concomitant use at baseline	0: No; 1: Yes	CPRD Aurum	

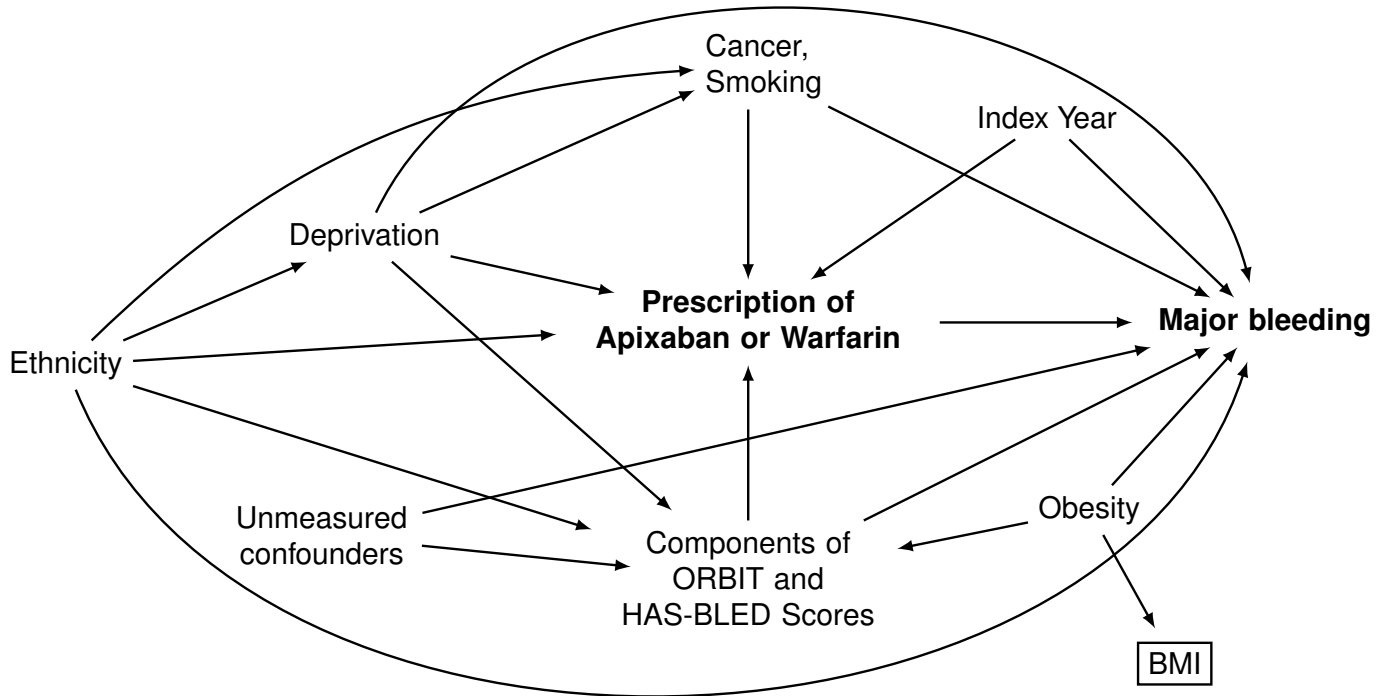
BMI: Body mass Index

D Directed acyclic graphs



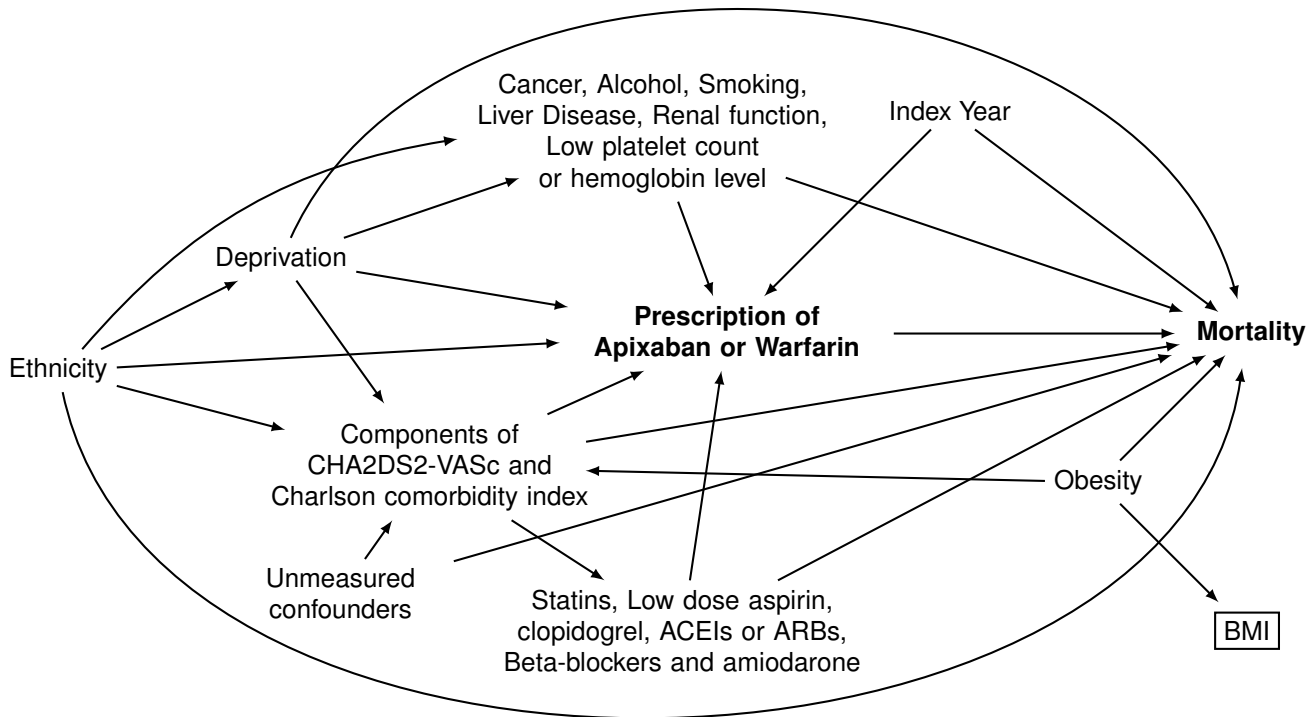
CHA₂DS₂-VASc: Congestive heart failure, hypertension, age ≥ 75 , diabetes mellitus, prior stroke, transient ischaemic attack or thromboembolism, vascular disease (peripheral artery disease, myocardial infarction, aortic plaque), age 65 to 74 and sex category (female); **ACEIs**: Angiotensin-converting enzyme inhibitors; **ARBs**: Angiotensin receptor blockers; **BMI**: Body mass index, an effect modifier by proxy

Figure S1. Directed acyclic graph for stroke, systemic embolism outcomes



Components of ORBIT and HAS-BLED Scores: Low hemoglobin or hematocrit, age > 74 years, any history of GI bleeding, intracranial bleeding, or hemorrhagic stroke, Glomerular filtration rate < 60 mL/min/1.73 m², using antiplatelet agents (Aspirin, clopidogrel, NSAIDs), hypertension, liver disease and alcohol use;
BMI: Body mass index, an effect modifier by proxy

Figure S2. Directed acyclic graph for major bleeding



CHA₂DS₂-VASc: Congestive heart failure (CHF), hypertension, age ≥ 75 , Diabetes mellitus (DM), prior stroke, transient ischaemic attack (TIA) or thromboembolism, vascular disease (peripheral artery disease (PAD), Myocardial infarction (MI), aortic plaque), age 65 to 74 and sex category (female); **Charlson comorbidity index:** Age, MI, CHF, PAD, prior stroke or TIA, dementia, chronic obstructive pulmonary disease, connective tissue disease, peptic ulcer disease, liver disease, DM, hemiplegia, chronic kidney disease, solid tumor, leukemia and lymphoma; **BMI:** Body mass index, an effect modifier by proxy

Figure S3. Directed acyclic graph for mortality

Table S4. Baseline characteristics of eligible study participants using CPRD linked data by treatment group with unweighted and inverse probability treatment weighted standardised mean differences

Characteristics	Apixaban	Warfarin	Overall	Unweighted SMD	IPT weighted SMD
Number of patients (N)	27747	23145	50892		
Demographics					
Age at entry (years)-median [IQR]	78.00 [71.00, 84.00]	77.00 [71.00, 82.00]	78.00 [71.00, 83.00]	0.149	0.042
Age groups at entry (years)-N (%)				0.072	0.097
18-49	118 (0.4)	116 (0.5)	234 (0.5)		
50-59	744 (2.7)	673 (2.9)	1417 (2.8)		
60-69	3545 (12.8)	3383 (14.6)	6928 (13.6)		
70-74	5397 (19.5)	4776 (20.6)	10173 (20.0)		
≥ 75	17943 (64.7)	14197 (61.3)	32140 (63.2)		
Female- N (%)	13079 (47.1)	10363 (44.8)	23442 (46.1)	0.047	0.008
Weight (kg)- median [IQR]	79.00 [67.00, 92.00]	81.00 [69.60, 94.00]	80.00 [68.00, 93.00]	0.111	0.132
BMI (kg/m²)- median [IQR]	27.80 [24.60, 31.80]	28.30 [25.00, 32.32]	28.00 [24.80, 32.00]	0.087	0.133
BMI groups (kg/m²)- N (%)				0.088	0.120

(continued)

Characteristics	Apixaban	Warfarin	Overall	Unweighted SMD	IPT weighted SMD
Underweight <18.5	438 (1.6)	245 (1.1)	683 (1.3)		
Normal weight 18.5-24.9	7231 (26.1)	5446 (23.5)	12677 (24.9)		
Overweight 25-29.9	10280 (37.0)	8561 (37.0)	18841 (37.0)		
Obesity class I 30-34.9	6065 (21.9)	5368 (23.2)	11433 (22.5)		
Obesity class II 35-39.9	2396 (8.6)	2228 (9.6)	4624 (9.1)		
Obesity class III ≥ 40	1337 (4.8)	1297 (5.6)	2634 (5.2)		
Individual-level IMD(2015)- N (%)				0.044	0.029
1st quintile (Least deprived)	6924 (25.0)	5529 (23.9)	12453 (24.5)		
2nd quintile	6446 (23.2)	5346 (23.1)	11792 (23.2)		
3rd quintile	5401 (19.5)	4692 (20.3)	10093 (19.8)		
4th quintile	4638 (16.7)	4132 (17.9)	8770 (17.2)		
5th quintile (Most deprived)	4338 (15.6)	3446 (14.9)	7784 (15.3)		
Practice-level IMD(2015)- N (%)				0.054	0.021
1st quintile (Least deprived)	5342 (19.3)	4285 (18.5)	9627 (18.9)		

(continued)

Characteristics	Apixaban	Warfarin	Overall	Unweighted SMD	IPT weighted SMD
2nd quintile	5704 (20.6)	4573 (19.8)	10277 (20.2)		
3rd quintile	5205 (18.8)	4822 (20.8)	10027 (19.7)		
4th quintile	6021 (21.7)	4922 (21.3)	10943 (21.5)		
5th quintile (Most deprived)	5475 (19.7)	4543 (19.6)	10018 (19.7)		
Ethnicity- N (%)				0.023	0.022
Black	276 (1.0)	283 (1.2)	559 (1.1)		
East Asian	37 (0.1)	31 (0.1)	68 (0.1)		
Mixed	62 (0.2)	52 (0.2)	114 (0.2)		
Other	71 (0.3)	53 (0.2)	124 (0.2)		
South Asian	524 (1.9)	445 (1.9)	969 (1.9)		
White	26777 (96.5)	22281 (96.3)	49058 (96.4)		
Lifestyle factors- N (%)					
Smoking status				0.055	0.008
Non-smoker	10190 (36.7)	7942 (34.3)	18132 (35.6)		
Former smoker	15550 (56.0)	13589 (58.7)	29139 (57.3)		
Current smoker	2007 (7.2)	1614 (7.0)	3621 (7.1)		

(continued)

Characteristics	Apixaban	Warfarin	Overall	Unweighted SMD	IPT weighted SMD
Alcohol consumption				0.060	0.017
Non-drinker	10631 (38.3)	8453 (36.5)	19084 (37.5)		
Light drinker	12972 (46.8)	11425 (49.4)	24397 (47.9)		
Moderate	3537 (12.7)	2872 (12.4)	6409 (12.6)		
Heavy	607 (2.2)	395 (1.7)	1002 (2.0)		
Disease characteristics- N					
(%)					
CHA ₂ DS ₂ -VAsC components					
Congestive heart failure (or left ventricular systolic dysfunction)	6529 (23.5)	5164 (22.3)	11693 (23.0)	0.029	0.018
Treated hypertension	21451 (77.3)	17969 (77.6)	39420 (77.5)	0.008	0.002
Systolic blood pressure (mm Hg)- median [IQR]	132.00 [121.00, 142.00]	132.00 [121.00, 140.00]	132.00 [121.00, 141.00]	0.016	0.002
Diabetes mellitus	8051 (29.0)	6663 (28.8)	14714 (28.9)	0.005	0.019
Stroke, TIA, or SE	7356 (26.5)	4928 (21.3)	12284 (24.1)	0.123	0.027
History of vascular diseases					

(continued)

Characteristics	Apixaban	Warfarin	Overall	Unweighted SMD	IPT weighted SMD
Peripheral artery disease	1803 (6.5)	1600 (6.9)	3403 (6.7)	0.017	0.019
Aortic Plaque	5817 (21.0)	5053 (21.8)	10870 (21.4)	0.021	0.016
Myocardial infarction	3582 (12.9)	3031 (13.1)	6613 (13.0)	0.006	0.010
CHA ₂ DS ₂ -VASc score				0.114	0.051
2	5956 (21.5)	5385 (23.3)	11341 (22.3)		
3	8221 (29.6)	7446 (32.2)	15667 (30.8)		
4	5750 (20.7)	4883 (21.1)	10633 (20.9)		
5	4342 (15.6)	3163 (13.7)	7505 (14.7)		
6	2297 (8.3)	1523 (6.6)	3820 (7.5)		
7	921 (3.3)	586 (2.5)	1507 (3.0)		
8	260 (0.9)	159 (0.7)	419 (0.8)		
Non-major bleeding	7806 (28.1)	5826 (25.2)	13632 (26.8)	0.067	0.016
Fall in previous year	789 (2.8)	287 (1.2)	1076 (2.1)	0.114	0.041
Comorbidities- N (%)					
Renal function				0.108	0.056
Normal	7946 (28.6)	7607 (32.9)	15553 (30.6)		

(continued)

Characteristics	Apixaban	Warfarin	Overall	Unweighted SMD	IPT weighted SMD
Mild impairment	12093 (43.6)	9841 (42.5)	21934 (43.1)		
Moderate impairment	6307 (22.7)	4480 (19.4)	10787 (21.2)		
Severe impairment	1401 (5.0)	1217 (5.3)	2618 (5.1)		
Charlson comorbidity index components					
COPD	3820 (13.8)	2896 (12.5)	6716 (13.2)	0.037	0.030
Connective tissue disease	1933 (7.0)	1471 (6.4)	3404 (6.7)	0.025	0.016
Peptic ulcer disease	1485 (5.4)	1263 (5.5)	2748 (5.4)	0.005	0.024
Liver disease	236 (0.9)	161 (0.7)	397 (0.8)	0.018	0.001
Hemiplegia	86 (0.3)	42 (0.2)	128 (0.3)	0.026	0.016
Non-hematological cancer	4385 (15.8)	3447 (14.9)	7832 (15.4)	0.025	0.009
Hematological cancer	602 (2.2)	481 (2.1)	1083 (2.1)	0.006	0.006
Concomitant medications at index date					
ACE inhibitors or ARBs	14083 (50.8)	12838 (55.5)	26921 (52.9)	0.095	0.011
Amiodarone	482 (1.7)	485 (2.1)	967 (1.9)	0.026	0.008
Antacids	719 (2.6)	598 (2.6)	1317 (2.6)	0.001	0.002
Aspirin	2274 (8.2)	3282 (14.2)	5556 (10.9)	0.191	0.036
Beta-blockers	17429 (62.8)	14071 (60.8)	31500 (61.9)	0.042	0.009

(continued)

Characteristics	Apixaban	Warfarin	Overall	Unweighted SMD	IPT weighted SMD
Calcium channel blockers	8800 (31.7)	7808 (33.7)	16608 (32.6)	0.043	0.044
Clopidogrel	996 (3.6)	1087 (4.7)	2083 (4.1)	0.056	0.010
Digoxin	2562 (9.2)	2345 (10.1)	4907 (9.6)	0.030	0.074
NSAIDs	2096 (7.6)	1487 (6.4)	3583 (7.0)	0.044	0.025
Statins	15867 (57.2)	13305 (57.5)	29172 (57.3)	0.006	0.008
Index year- N (%)				1.893	0.035
2013	170 (0.6)	7150 (30.9)	7320 (14.4)		
2014	1030 (3.7)	6297 (27.2)	7327 (14.4)		
2015	2920 (10.5)	4697 (20.3)	7617 (15.0)		
2016	4973 (17.9)	2672 (11.5)	7645 (15.0)		
2017	6623 (23.9)	1327 (5.7)	7950 (15.6)		
2018	7387 (26.6)	676 (2.9)	8063 (15.8)		
2019	4644 (16.7)	326 (1.4)	4970 (9.8)		

ACE inhibitors or ARBs: Angiotensin-converting enzyme inhibitors and angiotensin II receptor blockers; **BMI:** Body mass Index; **CHA₂DS₂-VASc score:** calculated as 1 for each component expect for age ≥ 75 and history of stroke counted as 2; **COPD:** Chronic obstructive pulmonary disease; **IMD(2015):** Index of Multiple Deprivation 2015; **IQR:** Interquartile range; **IPT weighted:** Inverse probability treatment weighted ; **NSAIDs:** Non-steroidal anti-inflammatory drugs; **SMD:** Standardised mean differences; **SE:** Systemic embolism; **TIA:** Transient ischemic attack

E Quantitative variables

The quantitative variables were age, systolic blood pressure, weight, and BMI.

Age (years) was reported as continuous variable and was also categorized into 18-49, 50-59, 60-69, 70-74, ≤ 75 .

Unequal intervals were used since the disease is uncommon in younger ages and being more than 75 years constitutes a major reason for initiating anticoagulant treatment.

Systolic blood pressure, and weight were reported as continuous variables.

BMI (kg/m^2) was reported as continuous variable and categorized based on NICE's classification⁷⁹:

- Underweight: less than 18.5
- Healthy weight: 18.5-24.9
- Overweight: 25-29.9
- Obesity class I: 30-34.9
- Obesity class II: 35-39.9
- Obesity class III: ≥ 40

However, based on the initial estimates of total participants in each BMI group across treatment groups, we regrouped the variable in the analysis to the following categories to avoid data sparsity:

- Healthy weight: ≤ 24.9
- Overweight: 25-29.9
- Obese: ≥ 30

F Inverse probability weights

We first identified the stabilized inverse probability treatment weights, SW^A , for each individual in our study population. The denominator is the probability that an individual received the observed treatment (A), given observed confounders (L). We used different numerators for overall and BMI-stratified results. For overall results, the numerator is the probability of receiving the observed treatment (A). For stratified results, the numerator is the probability of receiving the observed treatment (A) given the effect modifier (V).

- Overall analysis:

$$SW^A(V) = \frac{f(A)}{f(A|L, V)}$$

- Stratified analysis:

$$SW^A(V) = \frac{f(A|V)}{f(A|L, V)}$$

We then identified the stabilized inverse probability censoring weights, SW^C , for each individual in our study population. The denominator is the probability that an individual is not censored (C) given the observed treatment (A) and observed confounders (L). The numerator is the probability that the individual is not censored (C) given the observed treatment (A).

$$SW^C = \frac{f(C = 0|A)}{f(C = 0|A, L)}$$

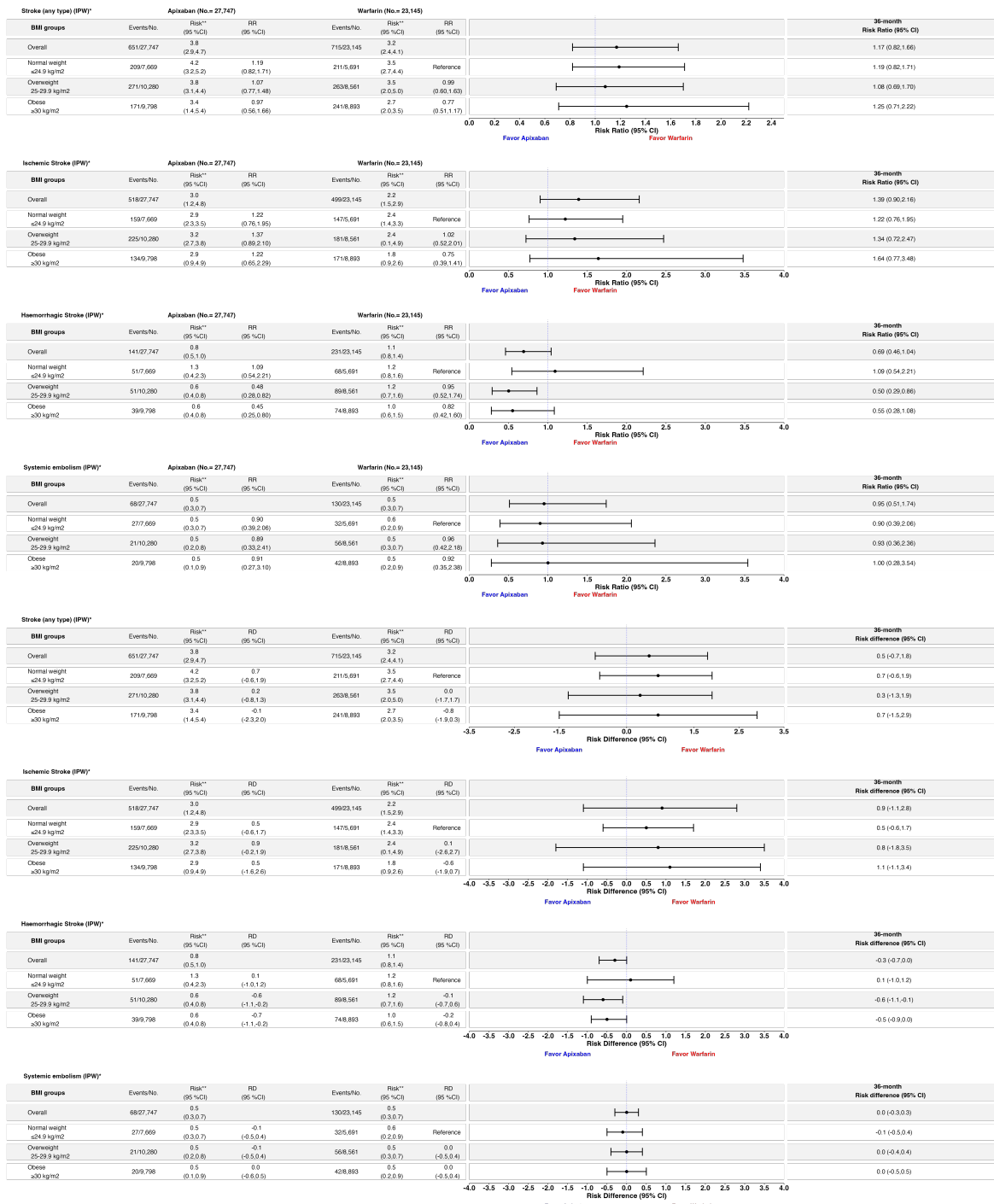
We multiplied the weights from the two models to get the final weights $SW^{A,C}$. These were used to non-parametrically estimate the cause-specific cumulative incidence described in Young et. al.²⁰

$$SW^{A,C} = SW^A(V) \times SW^C$$

Table S5. Summary of the inverse probability weights for the composite effectiveness outcome of stroke/systemic embolism and major bleeding

Inverse probability weights (IPW)	Apixaban			Warfarin		
	Min	Max	Mean	Min	Max	Mean
Composite of stroke/systemic embolism						
Stabilized Inverse probability treatment weights	0.53	65.98	1.21	0.43	22.87	0.82
Stabilized Inverse probability treatment weights (truncated to the 99th percentile)	0.53	6.72	1.07	0.43	6.72	0.81
Stabilized Inverse probability censoring weights	0.30	9.64	0.94	0.86	7.29	0.99
Stabilized Inverse probability censoring weight (truncated to the 99th percentile)	0.34	2.14	0.92	0.86	2.14	0.99
Major bleeding						
Stabilized Inverse probability treatment weights	0.53	64.9	1.20	0.43	23.44	0.82
Stabilized Inverse probability treatment weights (truncated to the 99th percentile)	0.53	6.74	1.06	0.43	6.74	0.81
Stabilized Inverse probability censoring weights	0.26	11.34	0.94	0.86	4.76	0.99
Stabilized Inverse probability censoring weight (truncated to the 99th percentile)	0.32	1.97	0.92	0.86	1.97	0.92

G Results of secondary effectiveness outcomes



*Using stabilized weights from inverse probability treatment weighting (IPTW) and inverse probability censoring weighting (IPCW); **Risk from IPT and IPC weighted cause-specific cumulative incidence estimator; BMI:Body mass index; IPW: Inverse probability weighting; No.: Number of individuals in the analysis; RD:Risk difference; RR:Risk ratio; SE: Systemic Embolism; 95% CI: 95% confidence interval estimated from non-parametric bootstrapping using 500 samples

Figure S4. Inverse probability weighted estimates of the 3-year BMI stratum-specific risks, risk differences per 100 people, and risk ratios of the comparative effectiveness for the total effect of apixaban versus warfarin in stroke (any type), ischemic stroke, haemorrhagic stroke, and systemic embolism using a complete-case analysis (Estimands 3,4,5,6)

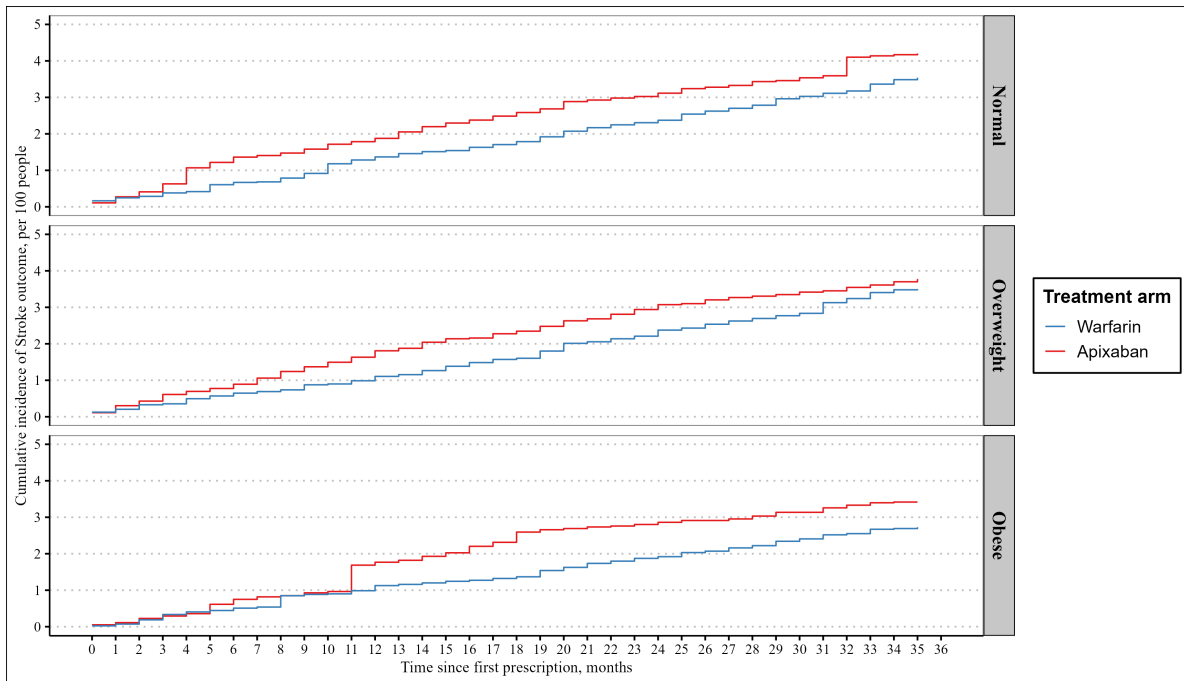


Figure S5. Inverse probability weighted cumulative incidence of the 3-year risk of the total effect of apixaban versus warfarin in stroke (ischemic or haemorrhagic) stratified by BMI using a complete-case analysis (Estimand 3)

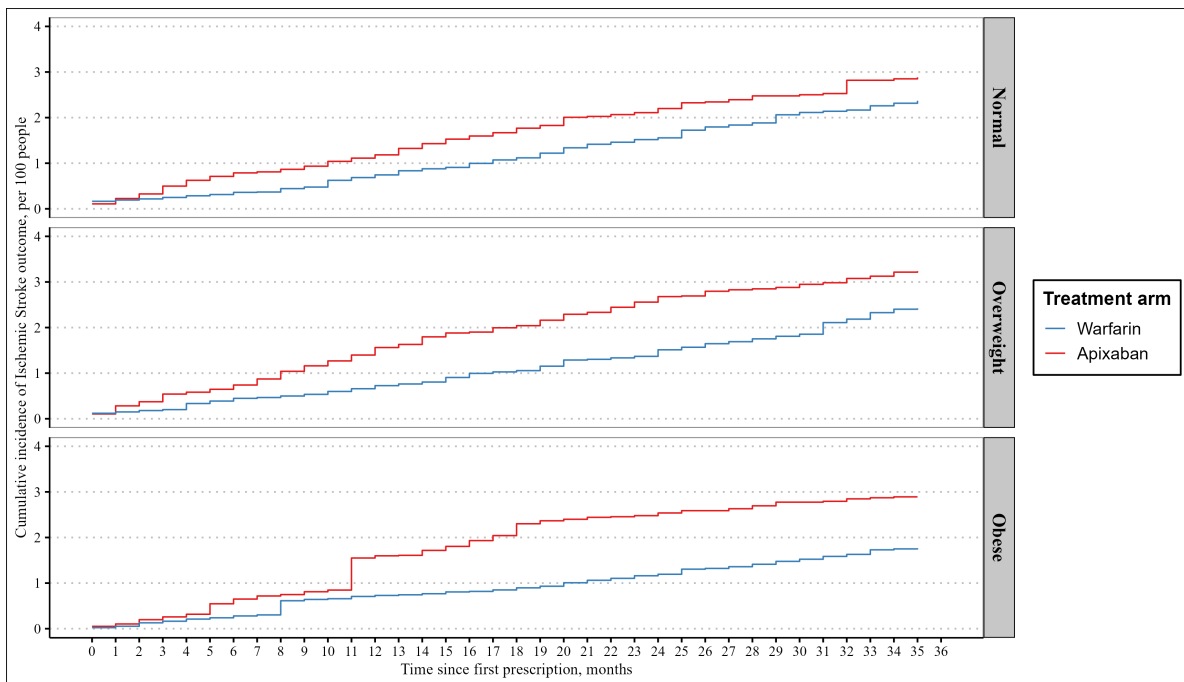


Figure S6. Inverse probability weighted cumulative incidence of the 3-year risk of the total effect of apixaban versus warfarin in ischemic stroke stratified by BMI using a complete-case analysis (Estimand 4)

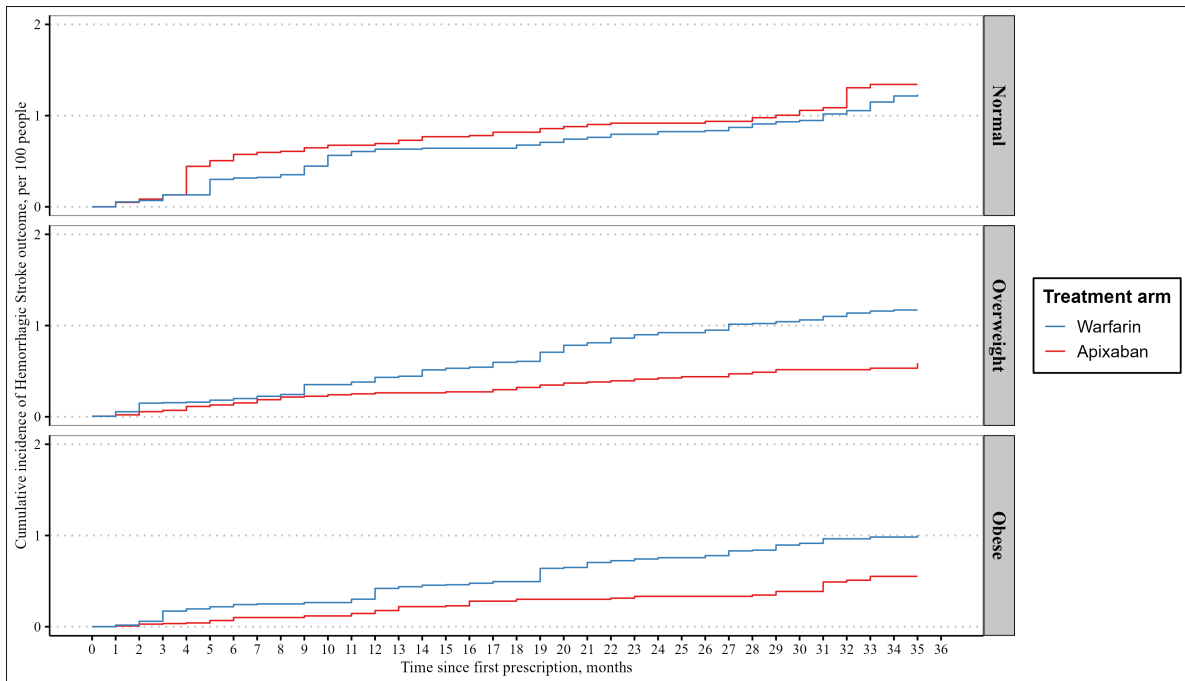


Figure S7. Inverse probability weighted cumulative incidence of the 3-year risk of the total effect of apixaban versus warfarin in haemorrhagic stroke stratified by BMI using a complete-case analysis (Estimands 5)

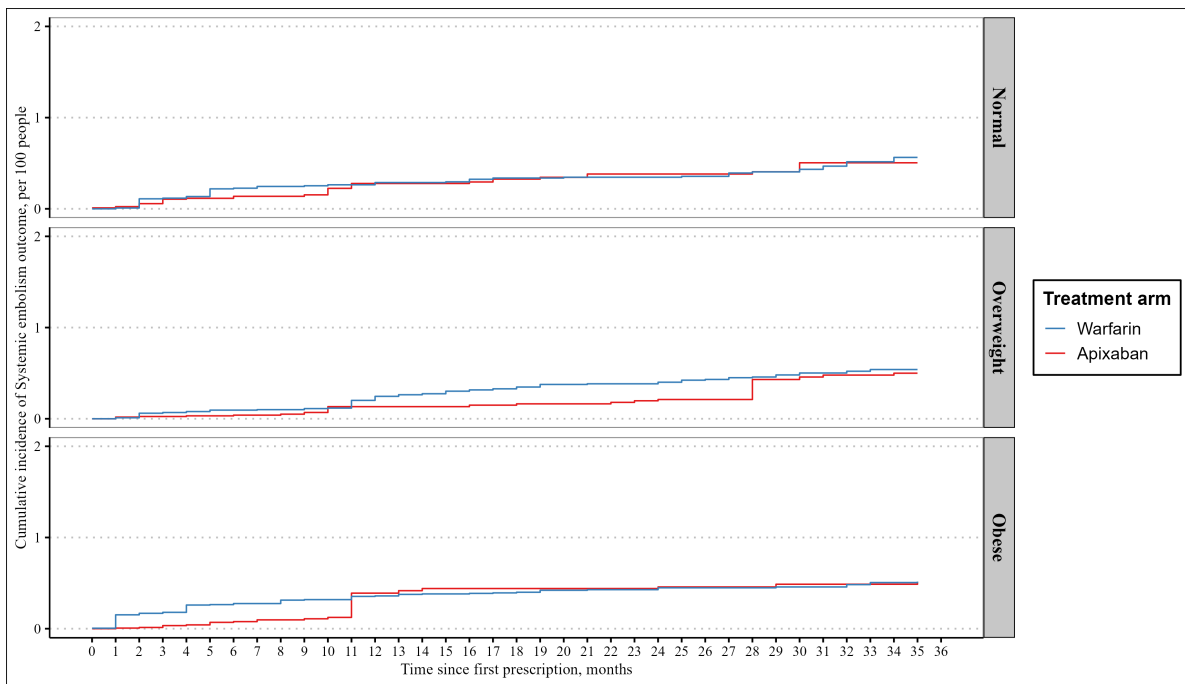
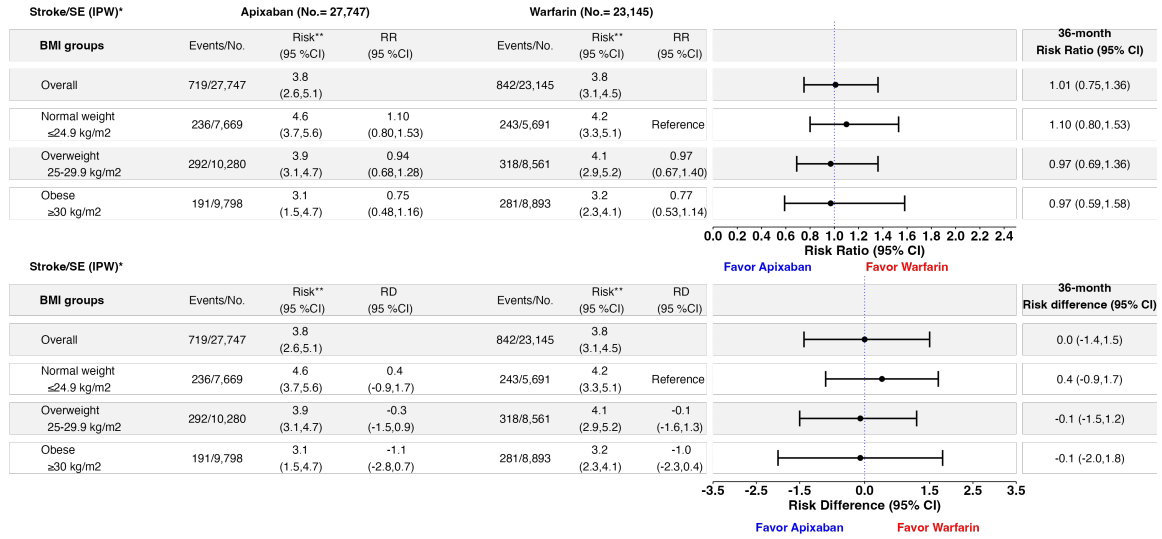


Figure S8. Inverse probability weighted cumulative incidence of the 3-year risk of the total effect of apixaban versus warfarin in systemic embolism stratified by BMI using a complete-case analysis (Estimands 6)

H Supplementary and sensitivity analyses

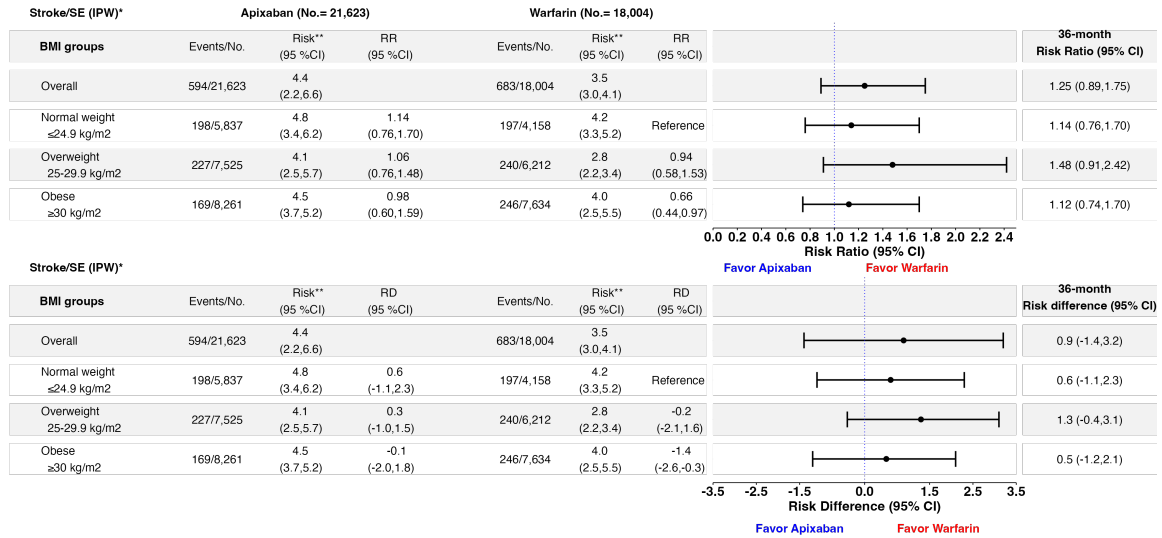
H.1 Supplementary analysis



*Using stabilized weights from inverse probability treatment weighting (IPTW) and inverse probability censoring weighting (IPCW); **Risk from IPT and IPC weighted cause-specific cumulative incidence estimator; BMI:Body mass index; IPW: Inverse probability weighting; No.: Number of Individuals in the analysis; RR:Risk ratio; SE: Systemic Embolism; 95% CI: 95% confidence interval estimated from non-parametric bootstrapping using 500 samples

Figure S9. Inverse probability weighted estimates of the 3-year BMI stratum-specific risks, risk differences per 100 people, and risk ratios of the comparative effectiveness for the total effect of apixaban versus warfarin in stroke/systemic embolism using a complete-case analysis and a hypothetical estimand (Estimand 8)

H.2 Analysis restricted to patients with BMI measurements in the last 3 years prior study entry



*Using stabilized weights from inverse probability treatment weighting (IPTW) and inverse probability censoring weighting (IPCW); **Risk from IPT and IPC weighted cause-specific cumulative incidence estimator; BMI:Body mass index; IPW: Inverse probability weighting; No.: Number of individuals in the analysis; RR:Risk ratio; SE: Systemic Embolism; 95% CI: 95% confidence interval estimated from non-parametric bootstrapping using 500 samples

Figure S10. Inverse probability weighted estimates of the 3-year BMI stratum-specific risks, risk differences per 100 people, and risk ratios of the comparative effectiveness for the total effect of apixaban versus warfarin in stroke/systemic embolism using a complete-case analysis for patients with available BMI measurements in the last 3 years prior study entry

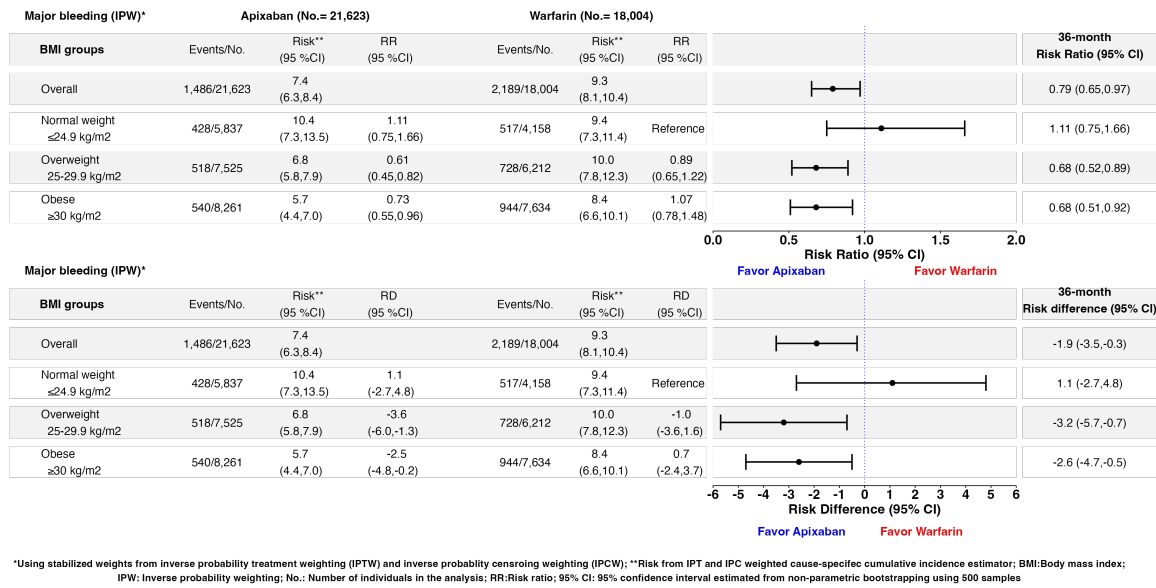


Figure S11. Inverse probability weighted estimates of the 3-year BMI stratum-specific risks, risk differences per 100 people, and risk ratios of the comparative safety for the total effect of apixaban versus warfarin in major bleeding using a complete-case analysis for patients with available BMI measurements in the last 3 years prior study entry

H.3 Direct effect with elimination of competing events

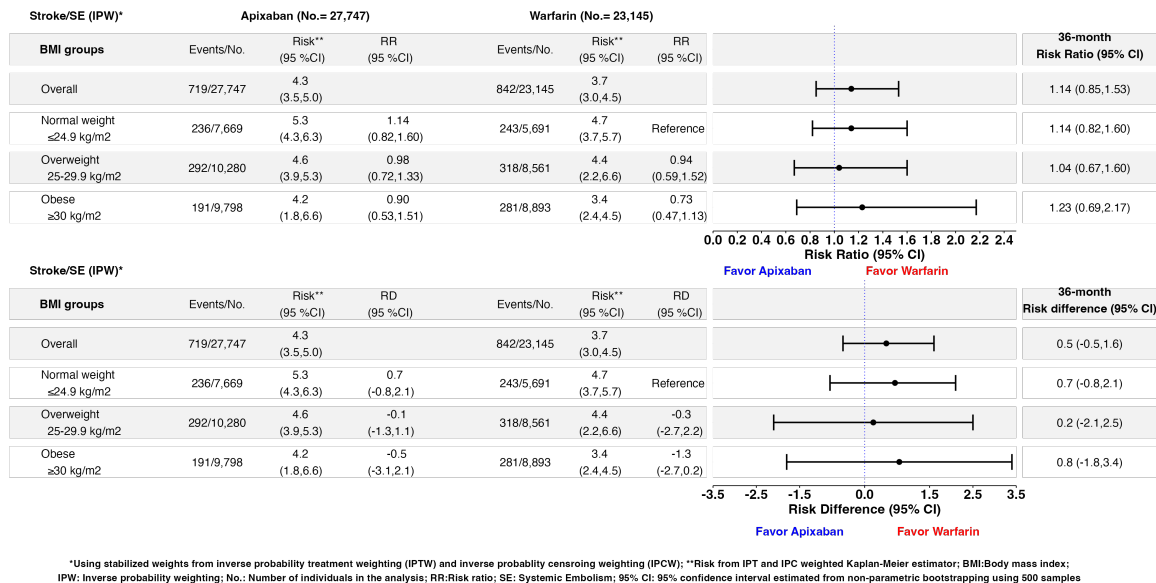
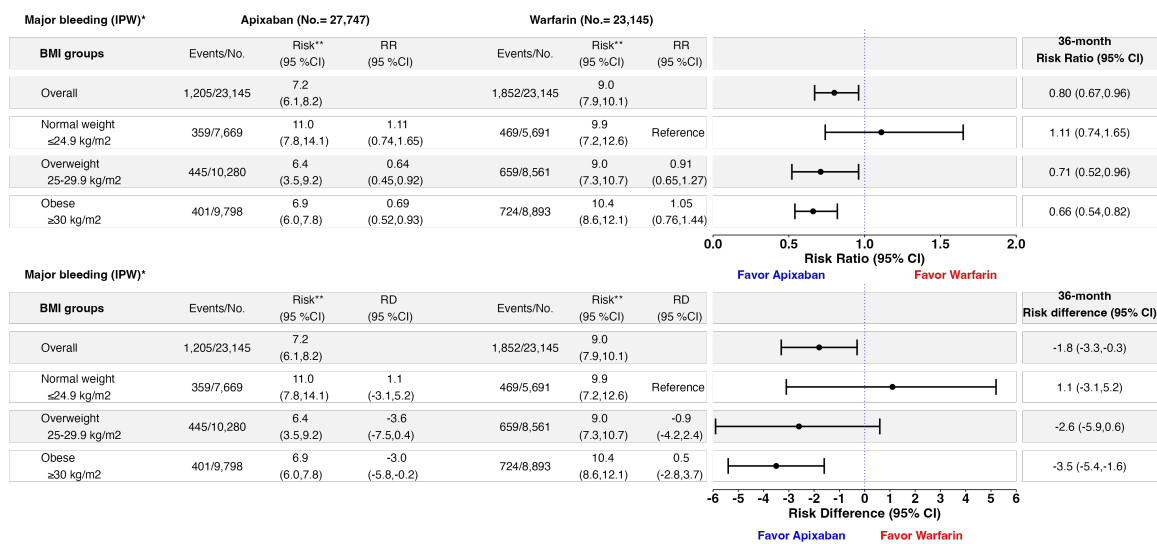


Figure S12. Inverse probability weighted estimates of the 3-year BMI stratum-specific risks, risk differences per 100 people, and risk ratios of the comparative effectiveness for the direct effect of apixaban versus warfarin in stroke/systemic embolism using a complete-case analysis



*Using stabilized weights from inverse probability treatment weighting (IPTW) and inverse probability censoring weighting (IPCW); **Risk from IPT and IPC weighted Kaplan-Meier estimator; BMI:Body mass index; IPW: Inverse probability weighting; No.: Number of individuals in the analysis; RR:Risk ratio; 95% CI: 95% confidence interval estimated from non-parametric bootstrapping using 500 samples

Figure S13. Inverse probability weighted estimates of the 3-year BMI stratum-specific risks, risk differences per 100 people, and risk ratios of the comparative safety for the direct effect of apixaban versus warfarin in major bleeding using a complete-case analysis

H.4 Inverse probability weighted cox proportional hazard model

For the primary composite outcome, the hazard ratio (HR) (apixaban/warfarin) was 1.23 (0.98, 1.55) overall and 1.19 (0.89, 1.60) in normal weight group, 1.09 (0.86, 1.40) in the overweight group and 1.43 (0.83, 2.48) in the obese group.

For major bleeding, the hazard ratio (HR) (apixaban/warfarin) was 0.72 (0.62, 0.83) overall and 0.98 (0.72 , 1.32) in normal weight group, 0.60 (0.50, 0.72) in the overweight group and 0.67 (0.53, 0.83) in the obese group.

H.5 99% Truncated inverse probability weighting

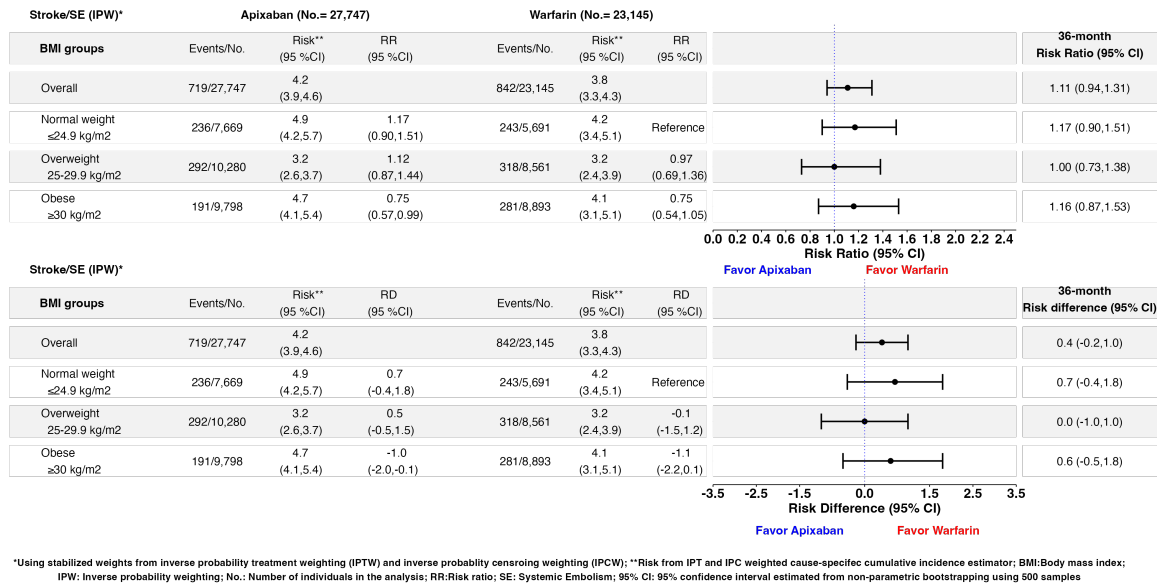


Figure S14. 99%-truncated inverse probability weighted estimates of the 3-year BMI stratum-specific risks, risk differences per 100 people, and risk ratios of the comparative effectiveness for the total effect of apixaban versus warfarin in stroke/systemic embolism using a complete-case analysis

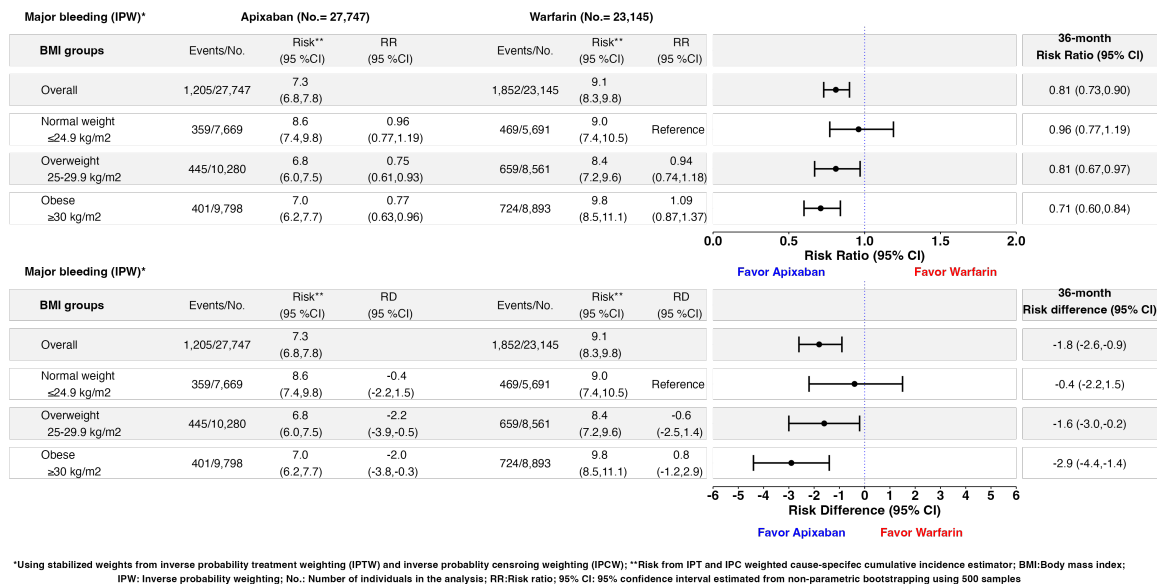


Figure S15. 99%-truncated inverse probability weighted estimates of the 3-year BMI stratum-specific risks, risk differences per 100 people, and risk ratios of the comparative safety for the total effect of apixaban versus warfarin in major bleeding using a complete-case analysis