

## Research in context

### **Risk factors for severe complications and mortality among hospitalized children with measles during a major outbreak in Northern Vietnam, 2017 - 2019**

Minh Dien Tran, Nhung T. H. Pham, Hoang Nguyen Vu, Minh-Hung Tran, Hoang-Anh Ngo, Phuc H Phan

- **Background and previous research**

Between 2017 and 2019, there was a global upsurge in measles outbreaks, and Vietnam witnessed one of the most substantial outbreaks in recent decades. To better understand the specific characteristics and impact of this outbreak in Vietnam, we conducted a thorough search for articles published between 2017 and 2022, focusing on this outbreak. However, our search revealed that none of the identified articles analyzed the socio-demographic and clinical data of individuals affected by measles during this particular outbreak in Vietnam, especially with the majority of patients concentrated in Northern Vietnam. This research aims to fill this gap and provide valuable insights into the sociodemographic and clinical aspects of the 2017 – 2019 measles outbreak in Vietnam.

- **Significance of the study**

Our research delved into the epidemiological and clinical characteristics of more than 2,000 children who were hospitalized with measles at Vietnam National Children's Hospital, the national referral hospital for pediatric patients in Hanoi, from 2017 to 2019. Our analysis encompassed various aspects including admission date, age, sex, residence, exposure location, vaccination status, hospitalized duration, respiratory support, underlying conditions, complications, co-infections, and outcomes. We analysed associations with death and severity. Notably, our study went beyond mortality analysis and also focused on the severity of patients, which is a unique contribution. As a result, this comprehensive analysis offers a deeper understanding of measles cases, surpassing the insights provided by existing published data.

- **Implications of the study**

This comprehensive analysis, including the largest number of individuals with measles in Vietnam, highlights the severity of a significant measles outbreak that accounted for 31.9% of the reported cases in the country from July 2017 to December 2019. The outbreak led to the unfortunate deaths of 30 children within the hospital alone, resulting in a mortality risk of 1.4%.

Our analysis reveals that 97.6% of these deaths occurred among unvaccinated children. Considering the decline in measles vaccination coverage to 89% for the first dose of measles-containing vaccine (MCV1) in 2021, it is imperative to strengthen routine immunization efforts to prevent future outbreaks. Further research should be undertaken to identify the health system and cultural factors associated with vaccination latency in Vietnam.

Our analysis showed that 40% of deaths occurred in children aged less than nine months, and 40% occurred between 6 months and 5 years. MCV1 is not routinely given before nine months. We draw attention to one of the few previous trials of earlier vaccination and recommend that the measles vaccine schedule in low- and middle-income countries where maternal antibody levels may be low should be re-evaluated.

# Risk factors for severe complications and mortality among hospitalized children with measles during a major outbreak in Northern Vietnam, 2017 - 2019

Minh Dien Tran<sup>a,\*</sup>, Nhung T. H. Pham<sup>b,c,\*</sup>, Hoang Nguyen Vu<sup>d,\*</sup>, Minh-Hung Tran<sup>d</sup>, Hoang-Anh Ngo<sup>e,\*\*</sup>, Phuc H Phan<sup>f,\*\*</sup>

<sup>a</sup>*Surgical Intensive Care Unit, Vietnam National Children's Hospital, 18/879 La Thanh, Lang Thuong Ward, Dong Da District, Hanoi, 11512, Vietnam*

<sup>b</sup>*Department of Infection Control and Prevention, Vietnam National Children's Hospital, 18/879 La Thanh, Lang Thuong Ward, Dong Da District, Hanoi, 11512, Vietnam*

<sup>c</sup>*Vietnam Field Epidemiology Training Program, 135 Nui Truc, Ba Dinh District, Hanoi, 11110, Vietnam*

<sup>d</sup>*Department of Mathematics, École Polytechnique, Institut Polytechnique de Paris, Route de Saclay, Palaiseau, 91120, France*

<sup>e</sup>*Usher Institute, The University of Edinburgh, NINE Edinburgh BioQuarter, 9 Little France Road, Edinburgh, EH16 4UX, United Kingdom*

<sup>f</sup>*Pediatric Intensive Care Unit, Vietnam National Children's Hospital, 18/879 La Thanh, Lang Thuong Ward, Dong Da District, Hanoi, 11512, Vietnam*

---

## Summary

**Introduction:** Measles outbreaks increased worldwide during the period of 2017-2019. Similarly, Vietnam experienced one of the largest measles outbreaks in recent decades, with various paediatric patients presenting severe complications. In this study, we aim to identify factors associated with death and severity among children with measles admitted to Vietnam National Children's Hospital (VNCH) in Hanoi, Vietnam between 2017 and 2019.

**Method:** This single-center retrospective cohort study included 2,072 patients with measles admitted to VNCH from 1/1/2017 to 31/12/2019. Data on epidemiological, clinical characteristics, vaccine status, and outcomes were collected and summarised. We conducted both univariable and multivariable logistic regression analyses to examine the correlations between various characteristics of hospitalized children and mortality.

**Findings:** In total, there were 2,072 patients, including 1,297 (62.6%) males and 775 (37.4%) females. The median age was 9 months (interquartile range 7 – 17). 87.3% of cases had not received any measles-containing vaccine (MCV). 30 (1.4%) patients died, with 40% aged less than 9 months. Only 3 among 30 (10%) who died had received at least 1 dose of MCV. Bronchopneumonia was the most common complication, occurring in 1,413 (68.2%) patients. The following characteristics were significantly associated with mortality in the multivariable analysis: age under 9 months and age from 9 months to 5 years, residing 20 to 200 kilometres from VNCH, and having co-infection with adenovirus or other hospital acquired infections. Age group was also significantly associated with severity in the multivariable analysis.

**Interpretation:** Vietnam continues to face the threat of future measles epidemics, given the burden of hospitalization and the high rate of complications observed in hospitalized patients. This highlights the critical need to maintain high measles vaccine coverage, particularly by targeting the unvaccinated population. To prevent future outbreaks and lower measles incidence, routine

---

\*Co-first authors

\*\*Co-corresponding authors

immunization needs to be strengthened, and earlier scheduling of MCV1 needs to be further evaluated. The comprehensive analysis of the 2017-19 measles outbreak presented in this study will contribute to informed decision-making regarding appropriate measures to counteract future resurgences of measles in Vietnam.

**Funding:** No specific grant from funding agencies in the public, commercial or not-for-profit sectors supported the submission and publication of this manuscript.

*Keywords:* measles, vaccine-preventable disease, Vietnam, Western Pacific region, immunisation, paediatric infectious diseases

---

## 1. Introduction

Measles is considered one of the most contagious diseases for humans with the basic reproduction number of 12 – 18, which means that each person with measles would, on average, infects 12 – 18 other people in a totally susceptible population [1]. This disease is caused by a paramyxovirus virus, manifesting as a febrile rash illness. It is an airborne disease, which can easily spread through susceptible populations, and the only effective measure for preventing this disease is vaccination. Before the invention and widespread use of the measles vaccine in 1963, frequent outbreaks of the disease occurred approximately every 2–3 years, resulting in approximately 2.6 million deaths annually [2]. It was estimated that measles infected over 90% of children before they reached 15, causing over two million deaths and 15,000 to 60,000 cases of blindness worldwide each year [3, 4]. Accelerated immunization activities have significantly reduced the number of measles deaths. From 2000 to 2018, measles vaccination is estimated to have prevented 23.2 million deaths, resulting in a 73% decrease in global measles deaths from 536,000 in 2000 to 132,490 in 2016 [3, 5, 6]. Measles outbreaks happen when people who are not immune to the measles virus are infected and spread the disease to unvaccinated or under-vaccinated populations. To control measles and avoid outbreaks and deaths, at both national and sub-national levels, vaccination coverage rates must reach and be maintained at 95% for both the first and second doses. However, global vaccination coverage rates for first-dose measles-containing vaccine (MCV1) have stagnated at 84-85% for over a decade, and while second-dose measles-containing vaccine (MCV2) coverage rates have been gradually increasing, they are only at 71%. Measles vaccination rates remain significantly below the necessary 95% threshold to control measles and prevent outbreaks [5].

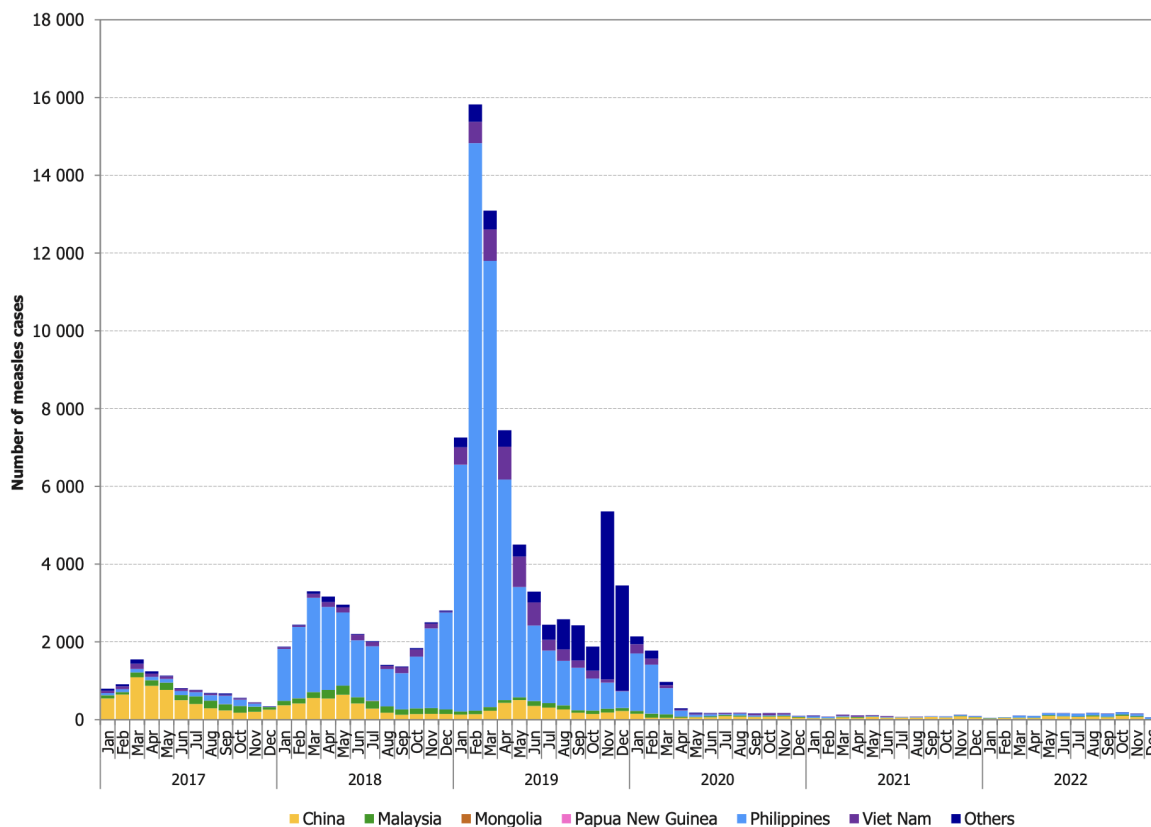


Figure 1: Time-series of reported confirmed and compatible measles cases in the Western Pacific Region by month of rash onset, 2017-2022 (adapted from: WHO Measles-Rubella Bulletin [7])

From 2017, measles experienced a surge worldwide, resulting in the highest number of reported cases in 23 years in 2019 [8]. World Health Organization (WHO) and the United States Centers for Disease Control and Prevention (CDC) published a report indicating that the number of reported measles cases increased to 869,770 in 2019, the highest number recorded since 1996, with all WHO regions reporting increases. The number of reporting countries with annual measles incidence of less than 5 cases per 1 million population decreased from 125 in 2016 to 85 in 2019 and an estimated 207,500 people worldwide died from measles, a nearly 50% increase since 2016 [5]. Measles cases surged drastically in WHO’s African Region (AFR) by 1,606%, in the Region of the Americas (AMR) by 19,739%, and in the European Region (EUR) by 2,282% since 2016. 9 countries (Central African Republic, Democratic Republic of the Congo, Georgia, Kazakhstan, Madagascar, North Macedonia, Samoa, Tonga, and Ukraine), accounting for 73% of all reported cases worldwide, experienced large outbreaks with reported measles incidence exceeding 500 per 1 million population [6].

Similar to other countries, between 2017 and 2019, Vietnam experienced one of the largest measles outbreaks in recent decades. In 2018, Vietnam had 8,444 cases of typhus-suspected measles with 1,177 confirmed measles cases, twice as many cases as in 2017. Most measles cases were unvaccinated or incompletely vaccinated children, or had no known vaccination history due to lost immunization records. To prevent the outbreak, the Ministry of Health of Vietnam launched an additional measles-rubella vaccination campaign in late 2018 for 4.2 million children aged between 1 and 5 in vulnerable areas in 57 cities and provinces [9]. In 2019, Vietnam reported over 39,000 suspected cases of typhus linked to measles, with more than 7,100 confirmed cases and four deaths [9, 10]. Analysis of the total infections in Hanoi until April 2019 revealed that up to 14% of children under 9 months had measles. This is the group of children who have not yet reached the age of vaccination and the mother has not

been vaccinated against measles, so they do not receive any antibodies during pregnancy. Children between 9 months and 5 years old had the highest incidence of the disease, accounting for 42% of total cases. Furthermore, the Center for Preventive Medicine has reported that approximately 15% of children of vaccination age are not received the required two full doses of the measles vaccine [11].

The objective of this study is to analyze epidemiological and clinical information gathered from Vietnam National Children's Hospital (VNCH), the national referral hospital for children in Hanoi, the capital city of Vietnam which admitted over 2,000 children with measles between 1 January 2017 and 31 December 2019. We aim to provide an overview of the outbreak in the northern region of Vietnam and assess the potential implications for Vietnam and neighbouring countries.

## 2. Method

### 2.1. Study design and participants

A single-center retrospective cohort study including all children admitted with measles admitted to VNCH between 01/01/2017 and 31/12/2019 was undertaken. During this time, individuals with suspected measles were admitted to VNCH, in addition to other hospitals in the region. Admitted children included either self-referrals (walk-in patients) or referrals from other health facilities. Patients with multiple missing data were excluded.

### 2.2. Ethics statement

The study was approved by the Ethics Committee for Biomedical Research Vietnam National Children's Hospital (Reference number: 473/BVNTW-HDDD, IRB identifier: IRB-VN01037/IRB00011976/FWA00028418). As the study involved a retrospective analysis of routinely collected data under strict anonymity, patient or caregiver consent was waived.

### 2.3. Procedures

Following WHO-recommended surveillance standard, the case definition of measles infection was based on laboratory-confirmed diagnosis. Eligible study participants are those who were diagnosed with measles by IgM or PCR test at any time point during their hospital stay, and vaccine-associated illness has been ruled out. All individuals from VNCH fulfilling the clinical case definition acquired information using the measles suspected case inquiry form. The information in the questionnaire was collected by interviewing parents about vaccination status in children's vaccination records and using paper or electronic medical records to collect other information. Duplicates and unidentified patients are detected and removed by comparing the patient IDs. The date of admission, measles vaccination status according to the vaccination card (if available), diagnosis upon admission, and location of exposure according to the caregiver report, as well as socio-demographic, clinical features, and outcome, were all included. There was no information provided about the rash's features, dietary status, or whether the case was likely a main or secondary home case.

Furthermore, to facilitate the analysis of factors associated with the risk of severe diseases, we defined severe patients as those requiring any form of respiratory assistance, namely oxygen cannula, continuous positive airway pressure (CPAP), conventional mechanical ventilation, high-frequency oscillatory (HFO) ventilation, or extracorporeal membrane oxygenation (ECMO). To build an anonymised dataset, selected data were extracted and personal information such as name, date of birth, and permanent address were removed.

#### 2.4. Statistical analysis

Univariable and multivariable Firth's Bias-Reduced logistic regression analysis was used to assess associations between specific characteristics of hospitalized children and clinical outcomes (survived or died). Comparisons were made between three separate locations of exposure, and the Chi-squared or Fisher's exact test was employed for the comparison of dichotomous and t-test for continuous variables. Odds ratios (ORs) were computed with a 95% confidence interval (CI), and a p-value less than or equal to 0.05 was considered statistically significant.

The selection of variables for the multivariable analysis was based on several factors. Basic variables such as year of hospitalization, vaccination status (patient having at least one dose of MCV), age, and exposure location were included as they are fundamental factors to consider. Additionally, the distance from the hospital was incorporated as it is expected to have an influence on the time taken to reach the hospital and the duration between symptom onset and testing/admission. Patients residing far from VNCH may initially receive treatment at lower-level hospitals, leading to potential delays in obtaining the correct treatment and adequate level of care. In addition to the previously mentioned factors, the duration of stay in the hospital was included as a variable in the analysis. This choice was motivated by the understanding that the duration of hospitalization can serve as an indicator of the severity of measles. Prolonged hospital stays may suggest a more severe manifestation of the disease. Co-infections and underlying conditions of several bodily systems were also added after ensuring that their correlation with other model covariates would not confound the link between the other variables and death. In the model analysing the risk towards severe diseases, the duration between symptom onset and testing was included as a variable based on its statistical significance. Conversely, in the mortality model, the variables "RSV" (respiratory syncytial virus) and "pertussis" (within the co-infection group of variables) were excluded due to their lack of statistical significance.

We report the median and interquartile range (IQR) for age groups and the frequency and percentage for categorical variables. Despite the huge number of univariable tests, we did not explicitly apply a multiple-testing correction since the variable selection technique for the multivariable model was only partially based on p-values. The Pandas software library was used to arrange the data, and the R package "logistf" was utilized for the main analysis [12, 13]. For mapping and distance computation from patient's place of residence to the hospital, the Azure Maps Route and Geopy libraries were used [14, 15].

All conducted statistical analysis can be found within the following GitHub repository.

#### 2.5. Role of the funding source

No specific grant from funding agencies in the public, commercial or not-for-profit sectors supported the publication of this publication. The corresponding author had full access to all the study's data and was ultimately responsible for the decision to submit it for publication.

### 3. Results

During the research period (1/1/17 - 31/12/19), VNCH admitted 2,072 children who met the clinical case definition for measles.

Figure 2 and 3 depict the residence of hospitalized children throughout the study period, the number of measles cases admitted to VNCH each week, and the number of deceased and critical children. The measles outbreak in Vietnam surged in 2018-19, mirroring the trend of VNCH admissions, which increased from low levels in 2017 to over 50 cases per 2 weeks (25 cases per week) during the months of April and May 2019, before declining to pre-epidemic levels by September 2019. Figure 5 illustrates number of measles cases admitted to VNCH and total measles cases in Vietnam,

2017-2019. From 2017 to 2019, VNCH admitted 132, 621, and 1,319 measles cases, accounting for 58%, 27% and 9% of total measles cases in Vietnam.

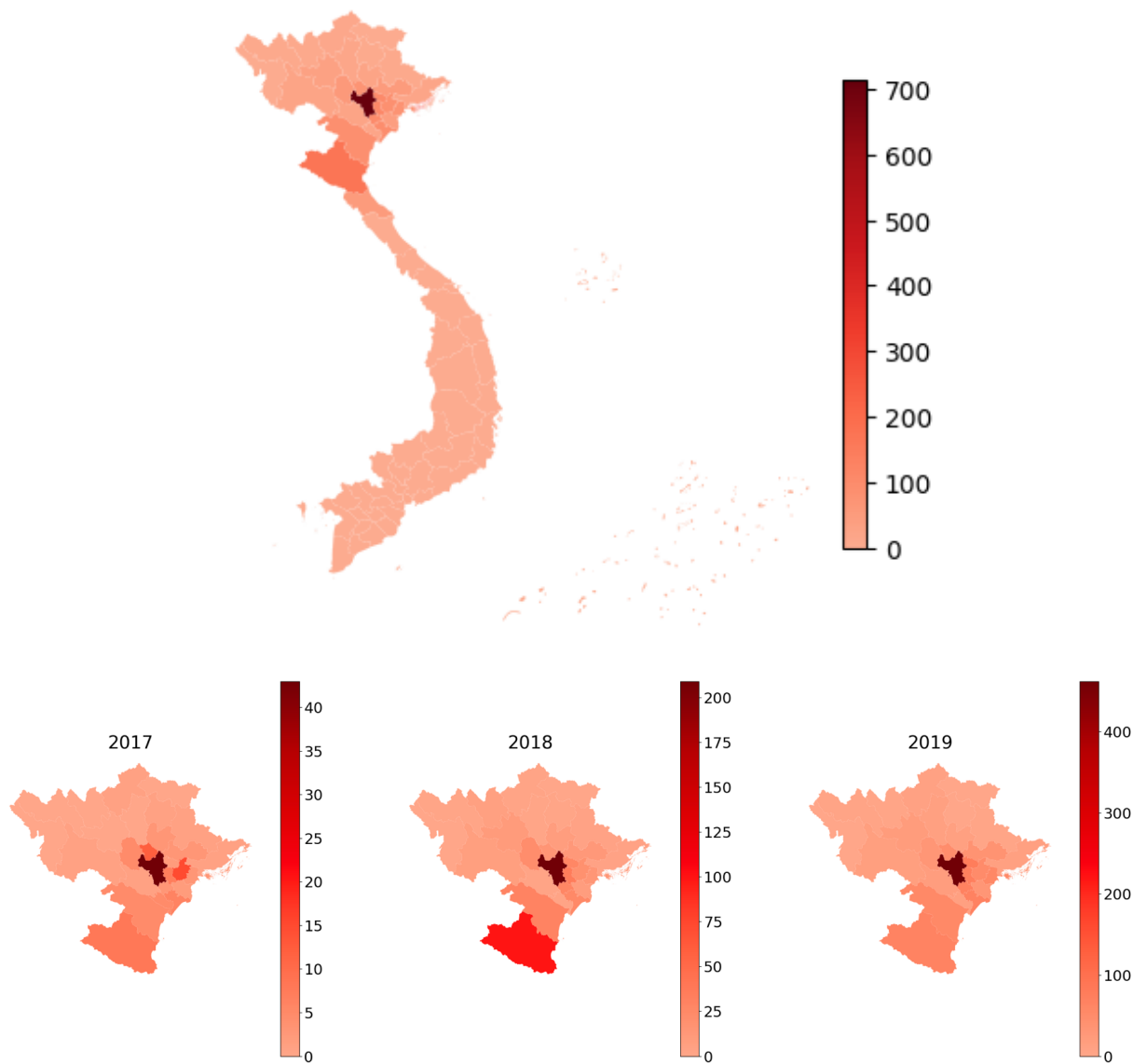


Figure 2: Distribution of hospitalized measles patients admitted to VNCH by provinces and city, and in northern Vietnam, 2017-2019

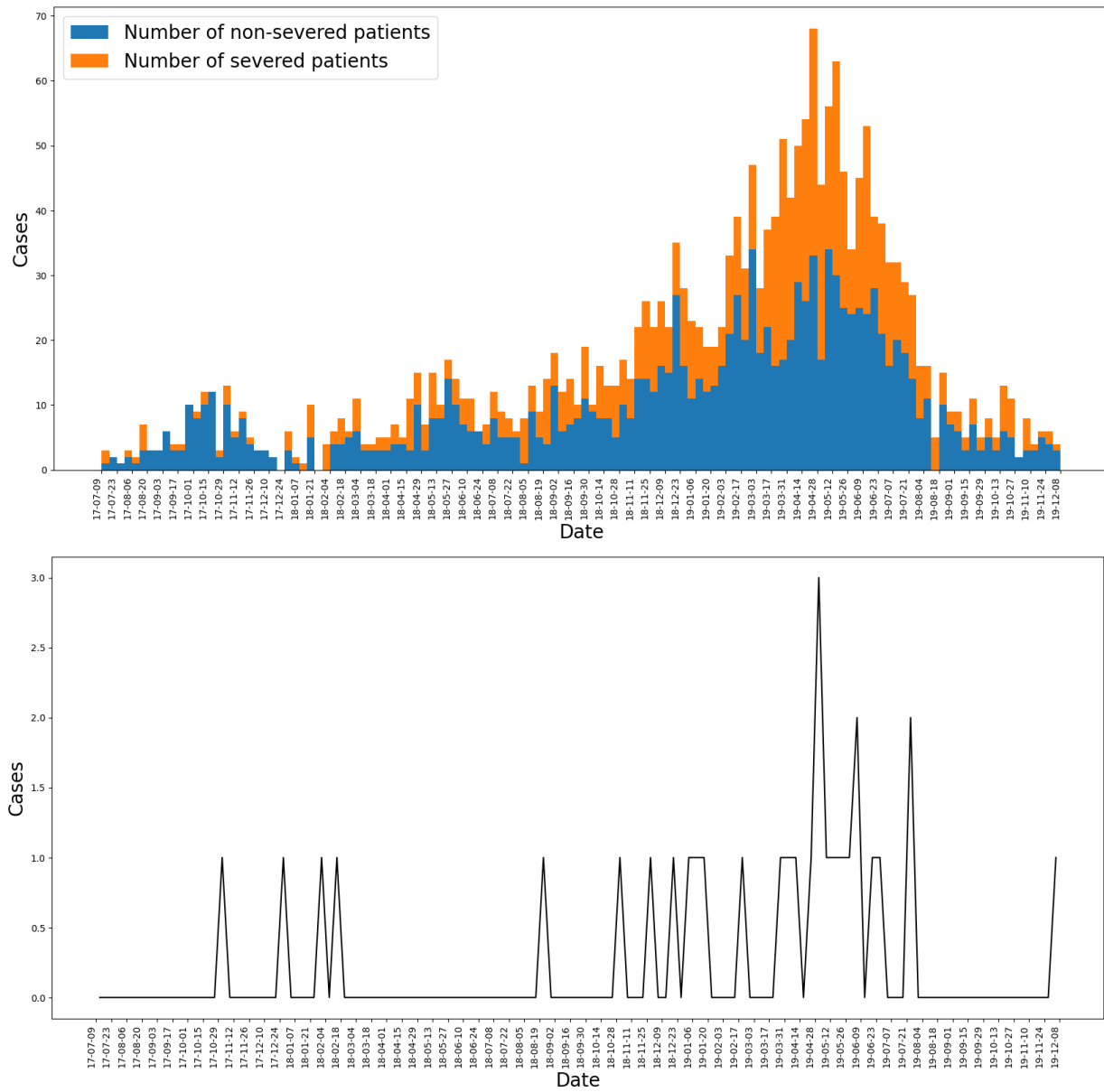


Figure 3: Epidemic curve of the hospitalized measles cases at VNCH by week of admission



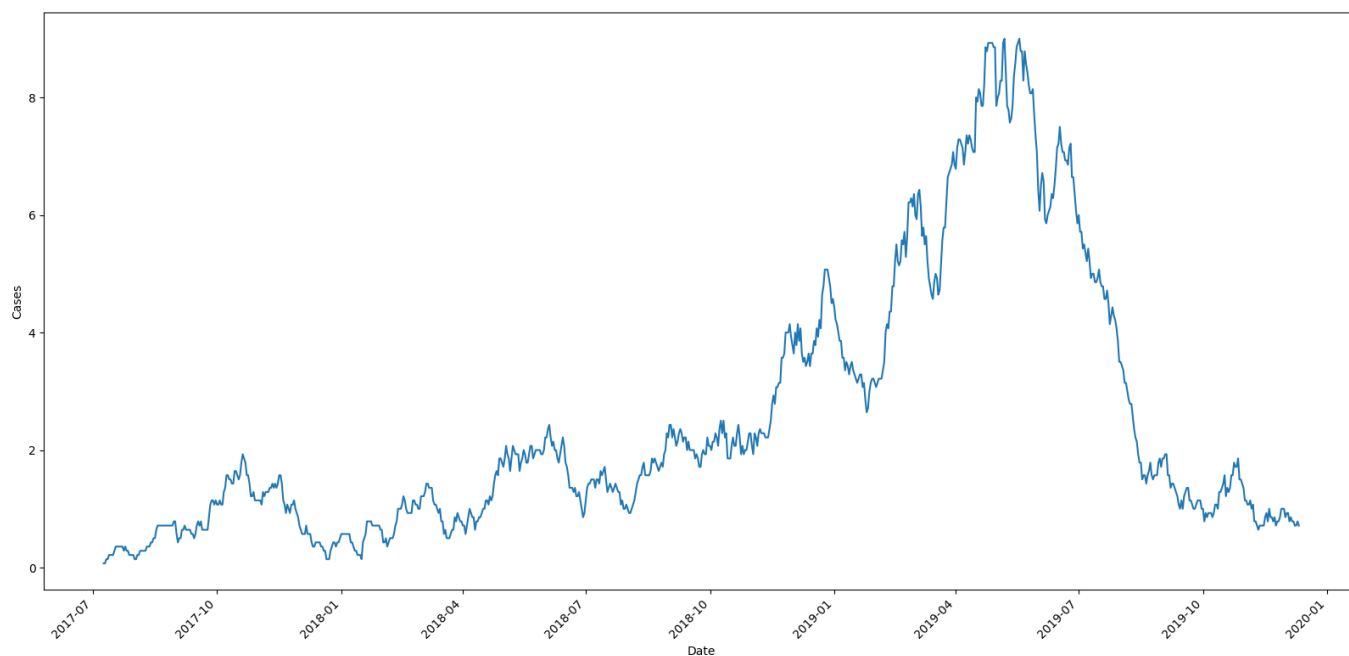


Figure 4: Daily trends in number of measles cases admitted to VNCH, with 7-day moving average

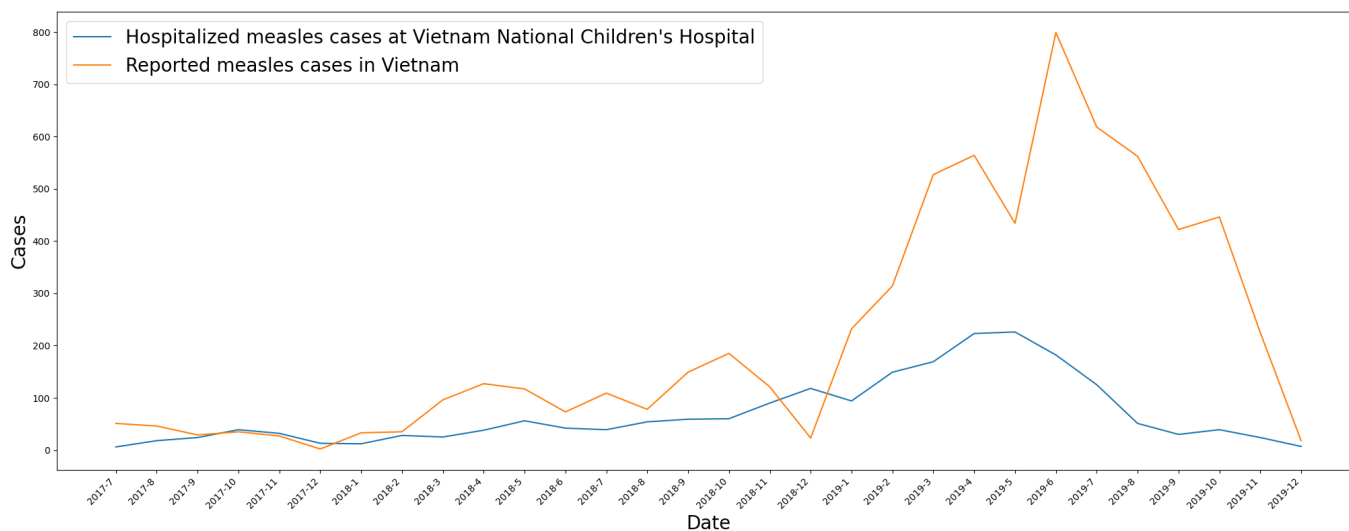


Figure 5: Hospitalized measles cases at Vietnam National Children's Hospital and reported measles cases in Vietnam by months, 2017-2019

The demographic and clinical features of the 2,072 children hospitalized with measles are described in Table 1. In 2017, there were 132 admissions and it quintuple in 2018 with 621 measles cases; more than half of the cases are in 2019 with 1,319 (63.7%) cases. 1,297 (62.6%) hospitalized children were male and 775 (37.4%) were female. The median age was 9.6 months, with an interquartile range (IQR) of 7 to 16.9 months; 43.5% were younger than 9 months, 47.5% were aged 9 months to 5 years, and 9% were older than 5 years. Most children (87.3%) were reported not to have received any MCV and only 9.8% received at least one dose. Measles cases were transmitted from the community in 61.8% of cases, from VNCH in 26.4% of cases, and from other hospitals in 11.6% of cases. 69.3% of patients

live in the Red River Delta, including Hanoi, and 84.6% live within 200 kilometers of the hospital. In 66% of all instances, the period between the development of the rash and hospital admission was shorter than one week. Furthermore, 611 (29.5%) cases were admitted to the hospital before the onset date due to a different disease. More than half of patients (50.3%) are hospitalized for less than 1 week and 86% for less than three weeks. Most children (76.5%) have no underlying diseases, with only 4.5% having chronic diseases related to gastrointestinal system and 3.5% having chronic diseases of the neurological system. 849 (41%) patients turned severe after hospitalization, with 685 (33.1%) requiring oxygen supplementation via nasal cannula, and 144 patients requiring conventional mechanical ventilation. Complications were reported in most children, the most prevalent of which was bronchopneumonia (68.2%). Middle ear infection and febrile seizure complications were reported in 30 (1.4%) and 10 (0.5%) children, respectively.

Overall, 30 (1.4%) children died and 2,041 (98.6%) were discharged.

Characteristics ( <i>N</i> = 2072)	<i>N</i> (%) or median (IQR)
Year of admission	
2017	132 (6.4)
2018	621 (30.0)
2019	1319 (63.7)
Sex	
Male	1297 (62.6)
Female	775 (37.4)
Age in months (median, IQR)	9.6 (7.0, 16.9)
Age group (in months)	
0 – 9	902 (43.5)
9 – 60	984 (47.5)
≥60	186 (9.0)
Vaccination status	
Not vaccinated	1808 (87.3)
Vaccinated with ≥ 1 dose	204 (9.8)
Vaccinated (number of doses unknown)	60 (2.9)
Place of exposure	
Within Vietnam National Children’s Hospital	547 (26.4)
Another health care facility	241 (11.6)
Community	1281 (61.8)
Unknown	3 (0.1)
Distance from the hospital (km)	
0 – 20	468 (22.6)
20 – 200	1285 (62.0)
200 – 500	305 (14.7)
≥500	14 (0.7)
Region of residence	
Hanoi	714 (34.5)
Northeastern region	100 (4.8)
Northwestern region	207 (10.0)
Red River Delta (except Hanoi)	722 (34.8)
Central region	321 (15.5)
Southern region	8 (0.4)

Clinical outcome	
Deceased	30 (1.4)
Survived	2042 (98.6)
Duration between onset and admission	
Admitted before the onset date due to a different disease ( $\leq 0$ )	611 (29.5)
0 – 3	916 (44.2)
3 – 7	452 (21.8)
7 – 14	47 (2.3)
$\geq 14$	46 (2.2)
Duration of stay within the hospital	
0 – 7	1042 (50.3)
7 – 21	739 (35.7)
$\geq 21$	291 (14.0)
Underlying conditions	
Respiratory system	42 (2.0)
Cardiovascular system	72 (3.5)
Gastrointestinal system	94 (4.5)
Kidney and urology system	46 (2.2)
Immunodeficiency	12 (0.6)
Neurological system	73 (3.5)
Inherited metabolic disorders	15 (0.7)
Other underlying conditions	159 (7.7)
No underlying diseases	1585 (76.5)
Maximal form of respiratory support used	
Oxygen cannula	685 (33.1)
Continuous Positive Airway Pressure (CPAP)	8 (0.4)
Conventional mechanical ventilation	144 (0.9)
High-frequency Oscillatory (HFO) Ventilation	11 (0.5)
Extracorporeal membrane oxygenation (ECMO)	1 (0.0)
Duration between onset and test (detection time) (in hours)	
Tested before onset ( $<0$ )	23 (1.1)
0 – 24	554 (26.7)
24 – 48	438 (21.1)
$\geq 48$	1057 (51.0)
Diagnosis upon admission	
Measles	848 (40.9)
Bronchopneumonia	849 (41.0)
Other diagnosis	391 (18.9)
Complications	
Gastroenteritis	51 (2.5)
Middle ear infection	30 (1.4)
Conjunctivitis	2 (0.1)
Laryngitis	7 (0.3)

Pneumonia bronchitis	1413 (68.2)
Febrile seizures	10 (0.5)
Sepsis/Septic shock	4 (0.2)
Co-infections	
Influenza A	16 (0.8)
Influenza B	4 (0.2)
Staphylococcus aureus	3 (0.1)
Streptococcus pneumoniae	2 (0.1)
Respiratory Syncytial Virus (RSV)	30 (1.4)
Adenovirus	95 (4.6)
Pertussis	17 (0.8)
Other co-infections	18 (0.9)
Clinical classification	
Severe	849 (41.0)
Not severe	1223 (59.0)

Table 1: Demographic and clinical characteristics of hospitalized children with measles

Table 2 shows the demographic and clinical characteristics of hospitalized patients with measles by place of exposure, including community, with VNCH or from another health care facilities. These characteristics were significantly associated with exposure location: admission year, age groups, vaccination status, region of residence, clinical outcome, underlying conditions, maximal form of respiratory used, diagnosis upon admission, different types of coinfections, and clinical progression.

Characteristics (N = 2069, 3 patients having unknown information on this field)	Total (by category)	N (% by place of exposure)			p-value
		Community	Another health care facility	Within VNCH	
Number of patients (% of total number of patients)	2069	1281 (61.8)	241 (11.6)	547 (26.4)	
Year of admission					<b>&lt;0.001</b>
2017	130	61 (4.8)	8 (3.3)	61 (11.2)	
2018	620	382 (29.8)	67 (27.8)	171 (31.3)	
2019	1319	838 (65.4)	166 (68.9)	315 (57.6)	
Sex					0.246
Male	1296	787 (61.4)	161 (66.8)	348 (63.6)	
Female	773	494 (38.6)	80 (33.2)	199 (36.4)	

Age in months (mean, SD)		23.5 (32.4)	14.0 (17.5)	16.1 (22.9)	
Age group (in months)					<b>&lt;0.001</b>
0 – 9	900	509 (39.7)	108 (44.8)	283 (51.7)	
9 – 60	983	624 (48.7)	125 (51.9)	234 (42.8)	
≥60	186	148 (11.6)	8 (3.3)	30 (5.5)	
Vaccination status					<b>&lt;0.001</b>
Not vaccinated	1805	1074 (83.8)	222 (92.1)	509 (93.1)	
Vaccinated ≥ 1 dose	204	168 (13.1)	13 (5.4)	23 (4.2)	
Vaccinated (number of doses unknown)	60	39 (3.0)	6 (2.5)	15 (2.7)	
Distance from the hospital (km)					0.092
0 – 20	468	347 (27.1)	45 (18.7)	76 (13.9)	
20 – 200	1282	764 (59.6)	143 (59.3)	375 (68.6)	
200 – 500	305	164 (12.8)	51 (21.2)	90 (16.5)	
≥500	14	6 (0.5)	2 (0.8)	6 (1.1)	
Region of residence					<b>&lt;0.001</b>
Hanoi	714	503 (39.3)	67 (27.8)	144 (26.3)	
Northeastern region	207	117 (9.1)	29 (12.0)	61 (11.2)	
Northwestern region	100	63 (4.9)	9 (3.7)	28 (5.1)	
Red River Delta (except Hanoi)	719	424 (33.1)	81 (33.6)	214 (39.1)	
Central region	321	169 (13.2)	54 (22.4)	98 (17.9)	
Southern region	8	5 (0.4)	1 (0.4)	2 (0.4)	
Clinical outcome					<b>&lt;0.001</b>
Survived	2039	1272 (99.3)	232 (96.3)	535 (97.8)	
Deceased	30	9 (0.7)	9 (3.7)	12 (2.2)	
Duration between onset and admission					0.198
Admitted before the onset date due to a different disease (<0)	609	259 (20.3)	52 (21.6)	298 (54.5)	
0 – 3	913	652 (51.0)	107 (44.4)	154 (28.2)	
3 – 7	452	303 (23.7)	64 (26.6)	85 (15.5)	
7 – 14	47	29 (2.3)	10 (4.1)	8 (1.5)	
≥14	46	36 (2.8)	8 (3.3)	2 (0.4)	
Duration of stay within the hospital					0.518
0 – 7	1041	817 (63.8)	78 (32.4)	146 (26.7)	
7 – 21	738	404 (31.5)	125 (51.9)	209 (38.2)	
≥21	290	60 (4.7)	38 (15.8)	192 (35.1)	
Underlying conditions					<b>&lt;0.001</b>
Respiratory system	42	16 (1.2)	3 (1.2)	23 (4.2)	
Cardiovascular system	72	37 (2.9)	7 (2.9)	28 (5.1)	

Gastrointestinal system	94	42 (3.3)	2 (0.8)	50 (9.1)	
Kidney and urology system	46	11 (0.9)	2 (0.8)	33 (6.0)	
Immunodeficiency	12	4 (0.3)	1 (0.4)	7 (1.3)	
Neurological system	73	22 (1.7)	5 (2.1)	46 (8.4)	
Inherited metabolic disorders	14	9 (0.7)	1 (0.4)	4 (0.7)	
Other underlying conditions	1583	1092 (85.2)	206 (85.5)	285 (52.1)	
No underlying diseases	159	55 (4.3)	14 (5.8)	90 (16.5)	
Maximal form of respiratory support used					<b>&lt;0.001</b>
Oxygen cannula	684	335 (26.2)	93 (38.6)	256 (46.8)	
CPAP	8	2 (0.2)	1 (0.4)	5 (0.9)	
Conventional mechanical ventilation	144	46 (3.6)	32 (13.3)	66 (12.1)	
HFO Ventilation	11	1 (0.1)	5 (2.1)	5 (0.9)	
ECMO	1	1 (0.1)	0 (0.0)	0 (0.0)	
Duration between onset and test (detection time) (in hours)					0.182
Tested before onset (<0)	22	14 (1.1)	3 (1.2)	5 (0.9)	
0 – 24	553	315 (24.6)	45 (18.7)	193 (35.3)	
24 – 48	438	264 (20.6)	47 (19.5)	127 (23.2)	
≥ 48	1056	688 (53.7)	146 (60.6)	222 (40.6)	
Diagnosis upon admission					<b>&lt;0.001</b>
Measles	847	612 (47.8)	85 (35.3)	150 (27.4)	
Bronchopneumonia	849	492 (38.4)	126 (29.9)	231 (42.2)	
Other diagnosis	389	185 (14.4)	35 (14.5)	169 (30.9)	
Complications					0.145
Gastroenteritis	50	34 (2.7)	4 (1.7)	12 (2.2)	
Middle ear infection	30	19 (1.5)	3 (1.2)	8 (1.5)	
Conjunctivitis	2	2 (0.2)	0 (0.0)	0 (0.0)	
Laryngitis	7	5 (0.4)	0 (0.0)	2 (0.4)	
Pneumonia bronchitis	1412	823 (64.2)	196 (81.3)	393 (71.8)	
Febrile seizures	10	2 (0.2)	1 (0.4)	7 (1.3)	
Sepsis/Septic shock	4	4 (0.3)	0 (0.0)	0 (0.0)	
Co-infections					
Influenza A	16	10 (0.8)	1 (0.4)	5 (0.9)	0.761
Influenza B	4	2 (0.2)	0 (0.0)	2 (0.4)	0.496
Staphylococcus aureus	3	1 (0.1)	0 (0.0)	2 (0.4)	0.274
Streptococcus pneumonia	2	0 (0.0)	1 (0.4)	1 (0.2)	0.123

Respiratory Syncytial Virus (RSV)	30	9 (0.7)	1 (0.4)	20 (3.7)	<0.001
Adenovirus	94	37 (2.9)	19 (7.9)	38 (6.9)	<0.001
Pertussis	17	5 (0.4)	3 (1.2)	9 (1.6)	0.018
Other co-infections	18	1 (0.1)	4 (1.7)	13 (2.4)	<0.001
Clinical progression					<0.001
Severe	848	385 (30.1)	131 (54.4)	332 (60.7)	
Not severe	1221	896 (69.9)	110 (45.6)	215 (39.3)	

Table 2: Demographic and clinical characteristics of hospitalized patients with measles by place of exposure

Footnote: CPAP: Continuous Positive Pressure Ventilation, HFOV: High Frequency Oscillatory Ventilation, ECMO: Extracorporeal Membrane Oxygenation

Table 3 depicts the relationships between socio-demographic, clinical characteristics and severity (turning severe). In the univariate analysis, the following factors were significantly associated with the likelihood of becoming severe: admission in 2018 and 2019, age 9 months to 5 years and more than 5 years, vaccination at least 1 dose, community transmission, living between 20 and 500 kilometres near VNCH, living in the Northeast, Red River Delta (except Hanoi), or Central Vietnam, mortality, being admitted to the hospital before the onset, hospitalized for more than a week, being tested more than 48 hours after the onset, having underlying diseases on the cardiovascular system, gastrointestinal system, kidney and urology system, neurological system. Having other underlying conditions or no underlying diseases is also heavily linked with severity. Moreover, being diagnosed with measles, or bronchopneumonia, having gastroenteritis, middle ear infection, laryngitis, or febrile seizures, having respiratory syncytial virus (RSV), adenovirus, pertussis, or other co-infections are connected to the risk of severity. Children with the following risk factors had significantly higher/lower odds of severity in the multivariable analysis: admission in 2018 (adjusted OR [AOR] 12.91, 95% CI 7.02 – 24.90) and in 2019 (AOR 16.35, 95% CI 9.03 – 31.16) compared with 2017, age under 9 months (AOR 2.55, 95% CI 1.61 – 4.12) and age from 9 months to 5 years (AOR 1.74, 95% CI 1.11 – 2.79) compared with less than 9 months, vaccinate at least 1 dose (AOR 0.59, 95% CI 0.38 – 0.89) compared with not vaccinate, community transmission (AOR 0.55, 95% CI 0.42 – 0.72) compared to transmission in VNCH, residing 20 to 200 kilometres (AOR 1.45, 95% CI 1.11 – 1.91) and 200 to 500 kilometres from VNCH (AOR 1.75, 95% CI 1.21 – 2.53) compared with less than 20 kilometres, hospitalized 7 to 21 days (AOR 3.50, 95% CI 2.79 – 4.40) and more than 21 days (AOR 13.86, 95% CI 8.92 – 22.04) compared with less than 7 days, having underlying condition in gastrointestinal system (AOR 6.56, 95% CI 1.60 – 28.19). Year of admission, age group, vaccination status, place of exposure, distance from VNCH, region of residence, clinical outcome, duration between onset and admission, duration of stay within VNCH had overall significance ( $p < 0.001$ ). The association between duration between onset and test and mortality had overall significance ( $p = 0.017$  by likelihood ratio test), but not within an individual category. Factors no longer statistically significant in the multivariate analysis: having medical conditions in cardiovascular system, kidney and urology system, or neurological system, absence of underlying medical or other medical conditions, being tested 48 hours after onset and being diagnosed with measles, or bronchopneumonia, having RSV, adenovirus, pertussis or other co-infections. Sex, an unknown number of vaccinations, having inherited metabolic disorders, or the

presence of an unknown place of exposure were not significantly associated with mortality in the uni- or multivariable analyses.

Characteristics ( <i>N</i> = 2072)	Total (by cate- gory)	N (%) by severity of progression		Crude OR	p- value (OR)	aOR	p- value (aOR)
		Severe	Not severe				
Number of patients	2072	849 (41.0)	1223 (59.0)				
Year of admission					< <b>0.001</b>		< <b>0.001</b>
2017	132	23 (2.7)	109 (8.9)	Ref		Ref	
2018	621	246 (29.0)	375 (30.7)	3.06 (1.94 – 5.02)	< <b>0.001</b>	12.91 (7.02 – 24.90)	< <b>0.001</b>
2019	1319	580 (68.3)	739 (60.4)	3.66 (2.36 – 5.92)	< <b>0.001</b>	16.35 (9.03 – 31.16)	< <b>0.001</b>
Sex							
Male	1297	542 (63.8)	755 (61.7)	Ref		Ref	
Female	775	307 (36.2)	468 (38.3)	0.91 (0.76 – 1.09)	0.331	1.06 (0.85 – 1.31)	0.618
Age in months (mean, SD)		13.7 (20.6)	24.2 (32.9)				
Age group (in months)					< <b>0.001</b>		
0 – 9	902	450 (53)	452 (37)	4.10 (2.82 – 6.11)	< <b>0.001</b>	2.55 (1.61 – 4.12)	< <b>0.001</b>
9 – 60	984	363 (42.8)	621 (50.8)	2.41 (1.66 – 3.59)	< <b>0.001</b>	1.74 (1.11 – 2.79)	<b>0.016</b>
≥60	186	36 (4.2)	150 (12.3)	Ref		Ref	
Vaccination status					< <b>0.001</b>		<b>0.045</b>
Not vaccinated	1808	787 (92.7)	1021 (83.5)	Ref		Ref	
Vaccinated with ≥1 dose	204	36 (4.2)	168 (13.7)	0.28 (0.19 – 0.40)	< <b>0.001</b>	0.59 (0.38 – 0.89)	<b>0.013</b>
Vaccinated (number of doses unknown)	60	26 (3.1)	34 (2.8)	0.99 (0.59 – 1.66)	0.989	0.80 (0.41 – 1.53)	0.506
Place of exposure					< <b>0.001</b>		< <b>0.001</b>
Within VNCH	1281	385 (45.3)	896 (73.3)	Ref		Ref	
Another health care facility	241	131 (15.4)	110 (9.0)	0.77 (0.57 – 1.05)	0.096	0.87 (0.60 – 1.26)	0.454
Community	547	332 (39.1)	215 (17.6)	0.28 (0.23 – 0.34)	< <b>0.001</b>	0.55 (0.42 – 0.72)	< <b>0.001</b>



Unknown	3	1 (0.1)	2 (0.2)	0.39 (0.04 – 2.94)	0.352	1.12 (0.08 – 16.50)	0.924
Distance from the hospital (km)					<b>&lt;0.001</b>		<b>0.001</b>
0 – 20	468	125 (14.7)	343 (28.0)	Ref		Ref	
20 – 200	1285	567 (66.8)	718 (58.7)	2.16 (1.72 – 2.73)	<b>&lt;0.001</b>	1.45 (1.11 – 1.91)	<b>0.007</b>
200 – 500	305	153 (18.0)	152 (12.4)	2.75 (2.04 – 3.74)	<b>&lt;0.001</b>	1.75 (1.21 – 2.53)	<b>0.003</b>
≥500	14	4 (0.5)	10 (0.8)	1.17 (0.34 – 3.42)	0.783	0.26 (0.05 – 1.08)	0.065
Region of residence					<b>&lt;0.001</b>		
Hanoi	714	239 (28.2)	475 (38.8)	Ref		N/A	
Northeastern region	207	98 (11.5)	109 (8.9)	1.79 (1.30 – 2.44)	<b>&lt;0.001</b>	N/A	
Northwestern region	100	49 (5.8)	51 (4.2)	1.91 (1.25 – 2.91)	<b>0.002</b>	N/A	
Red River Delta (except Hanoi)	722	306 (36.0)	416 (34.0)	1.46 (1.18 – 1.81)	<b>&lt;0.001</b>	N/A	
Central region	321	155 (18.3)	166 (13.6)	1.85 (1.42 – 2.42)	<b>&lt;0.001</b>	N/A	
Southern region	8	2 (0.2)	6 (0.5)	0.76 (0.14 – 3.01)	0.714	N/A	
Clinical outcome					<b>&lt;0.001</b>		
Survived	2042	819 (96.5)	1223 (100.0)	Ref		N/A	
Deceased	30	30 (3.5)	0 (0.0)	91.07 (12.83 – 11500)	<b>&lt;0.001</b>	N/A	
Duration between onset and admission					<b>&lt;0.001</b>		
Admitted before the onset date due to a different disease (<0)	611	339 (39.9)	272 (22.2)	2.33 (1.89 – 2.88)	<b>&lt;0.001</b>	N/A	
0 – 3	914	318 (37.5)	596 (48.7)	Ref		N/A	
3 – 7	452	156 (18.4)	296 (24.2)	0.99 (0.78 – 1.25)	0.924	N/A	
7 – 14	47	22 (2.6)	25 (2.0)	1.65 (0.92 – 2.96)	0.094	N/A	
≥14	46	13 (1.5)	33 (2.7)	0.75 (0.38 – 1.41)	0.385	N/A	
Unknown	2	1 (0.1)	1 (0.1)	1.87 (0.15 – 23.13)	0.591	N/A	

Duration of stay within the hospital					<0.001		<0.001
0 – 7	1042	226 (26.6)	816 (66.7)	Ref		Ref	
7 – 21	739	391 (46.1)	348 (28.5)	4.05 (3.30 – 4.98)	<0.001	3.50 (2.79 – 4.40)	<0.001
≥21	291	232 (27.3)	59 (4.8)	14.09 (10.29 – 19.55)	<0.001	13.86 (8.92 – 22.04)	<0.001
Underlying conditions							
Respiratory system	42	23 (2.7)	19 (1.6)	1.76 (0.96 – 3.25)	0.068	1.64 (0.38 – 7.62)	0.561
Cardiovascular system	72	45 (5.3)	27 (2.2)	2.46 (1.53 – 4.03)	<0.001	3.81 (0.89 – 17.44)	0.072
Gastrointestinal system	94	73 (8.6)	21 (1.7)	5.29 (3.31 – 8.83)	<0.001	6.56 (1.60 – 28.19)	0.008
Kidney and urology system	46	20 (2.4)	26 (2.1)	1.12 (0.62 – 1.99)	<0.001	0.93 (0.27 – 3.14)	0.900
Immunodeficiency	12	6 (0.7)	6 (0.5)	1.44 (0.47 – 4.41)	0.511	1.72 (0.26 – 11.77)	0.577
Neurological system	73	44 (5.2)	29 (2.4)	2.24 (1.40 – 3.63)	<0.001	3.28 (0.91 – 12.26)	0.071
Inherited metabolic disorders	15	7 (0.8)	8 (0.7)	1.27 (0.46 – 3.44)	0.633	1.61 (0.28 – 8.84)	0.576
Other underlying conditions	1585	90 (10.6)	69 (5.6)	1.98 (1.43 – 2.75)	<0.001	2.47 (0.61 – 10.44)	0.207
No underlying diseases	159	554 (65.3)	1031 (84.3)	0.35 (0.28 – 0.43)	<0.001	1.51 (0.39 – 6.20)	0.552
Maximal form of respiratory support used							
Oxygen cannula	685	685 (80.7)	0 (0.0)	N/A	N/A	N/A	
CPAP	8	8 (0.9)	0 (0.0)	N/A	N/A	N/A	
Conventional mechanical ventilation	144	144 (17.0)	0 (0.0)	N/A	N/A	N/A	
FHO Ventilation	11	11 (1.3)	0 (0.0)	N/A	N/A	N/A	
ECMO	1	1 (0.1)	0 (0.0)	N/A	N/A	N/A	
Duration between onset and test (detection time) (in hours)					0.017		0.220
Tested before onset (<0)	23	8 (0.9)	15 (1.2)	0.72 (0.29 – 1.65)	0.439	1.36 (0.46 – 3.72)	0.566
0 – 24	554	240 (28.3)	314 (25.7)	Ref		Ref	

24 – 48	438	201 (23.7)	237 (19.4)	1.11 (0.86 – 1.43)	0.419	1.33 (0.98 – 1.81)	0.071
≥48	1057	400 (47.1)	657 (53.7)	0.80 (0.65 – 0.98)	<b>0.033</b>	1.29 (0.99 – 1.68)	0.060
Diagnosis upon admission							
Measles	848	272 (32.0)	576 (47.1)	0.53 (0.44 – 0.64)	<b>&lt;0.001</b>	0.77 (0.19 – 3.23)	0.725
Bronchopneumonia	849	409 (48.2)	440 (36.0)	1.36 (1.14 – 1.63)	<b>&lt;0.001</b>	1.07 (0.26 – 4.45)	0.930
Other diagnosis	391	177 (20.8)	214 (17.5)	1.24 (0.99 – 1.55)	0.056	0.49 (0.14 – 2.57)	0.483
Complications							
Gastroenteritis	51	14 (1.6)	37 (3.0)	0.55 (0.29 – 0.99)	<b>0.047</b>	N/A	
Middle ear infection	30	4 (0.5)	26 (2.1)	0.24 (0.08 – 0.60)	<b>0.001</b>	N/A	
Conjunctivitis	2	1 (0.1)	1 (0.1)	1.44 (0.12 – 17.76)	0.753	N/A	
Laryngitis	7	0 (0.0)	7 (0.6)	0.09 (0.00 – 0.78)	<b>0.024</b>	N/A	
Pneumonia bronchitis	1413	721 (84.9)	692 (56.6)	4.31 (3.47 – 5.38)	<b>&lt;0.001</b>	N/A	
Febrile seizures	10	9 (1.1)	1 (0.1)	9.21 (2.12 – 86.00)	<b>0.001</b>	N/A	
Sepsis/Septic shock	4	2 (0.2)	2 (0.2)	1.44 (0.22 – 9.34)	0.684	N/A	
Co-infections							
Influenza A	16	8 (0.9)	8 (0.7)	1.44 (0.55 – 3.82)	0.452	N/A	
Influenza B	4	3 (0.4)	1 (0.1)	3.37 (0.55 – 34.81)	0.189	N/A	
Staphylococcus aureus	3	1 (0.1)	2 (0.2)	0.86 (0.08 – 6.50)	0.887	N/A	
Streptococcus pneumoniae	2	2 (0.2)	0 (0.0)	7.22 (0.59 – 996)	0.13	N/A	
Respiratory Syncytial Virus (RSV)	30	18 (2.1)	12 (1.0)	2.16 (1.06 – 4.55)	<b>0.035</b>	0.75 (0.31 – 1.83)	0.519
Adenovirus	95	73 (8.6)	22 (1.8)	5.05 (3.18 – 8.35)	<b>&lt;0.001</b>	1.72 (0.97 – 3.12)	0.062
Pertussis	17	12 (1.4)	5 (0.4)	3.31 (1.26 – 9.88)	<b>0.014</b>	0.85 (0.27 – 2.99)	0.791
Other co-infections	18	15 (1.8)	3 (0.2)	6.48 (2.25 – 24.88)	<b>&lt;0.001</b>	2.53 (0.62 – 14.11)	0.208

Table 3: Association with the risk of severe form of measles among hospitalized patients

Table 4 illustrates the relationships between socio-demographic and clinical factors and mortality. In the univariate analysis, the following factors were significantly associated with fatality: age 9 months to 5 years, community transmission, living 20 to 500 kilometres from VNCH, living in the Northeast, Northwest or Central Vietnam, being admitted to the hospital before the onset or after 2 weeks, hospitalized for more than a week, having no underlying diseases or other underlying conditions, requiring a form of respiratory support (oxygen supplementation via nasal cannula, CPAP, conventional mechanical ventilation, HFO ventilation). Furthermore, having adenovirus or other healthcare-related infections, being severe, having sepsis/septic shock sequelae, and being diagnosed with measles, bronchopneumonia, or other diseases on admission are all substantially linked with death. Children with the following risk factors had significantly higher/lower odds of mortality in the multivariable analysis: age under 9 months (adjusted OR [AOR] 0.21, 95% CI 0.07 – 0.69) and age from 9 months to 5 years (AOR 0.18, 95% CI 0.06 – 0.57) compared with less than 9 months, residing 20 to 200 kilometres from VNCH (AOR 4.67, 95% CI 1.25 – 28.08), having adenovirus (AOR 7.46, 95% CI 2.95 – 18.51) or other hospital acquired infections (AOR 7.01, 95% CI 1.08 – 39.01). The association between place of exposure and mortality had overall significance ( $p = 0.001$  by likelihood ratio test), but not within an individual category. The duration between onset and admission, as well as duration of stay within the hospital, had overall significance ( $p = 0.015$  and  $p < 0.001$ , respectively). Factors such as age less than 9 months, community transmission, hospitalization for more than one week, absence of underlying medical or other medical conditions, living 20 to 200 km away from VNCH and being diagnosed with measles, bronchopneumonia, or others on admission in the univariable analysis were no longer statistically significant in the multivariate analysis. Sex, admission year, having bronchopneumonia or the presence of an unknown place of exposure were not significantly associated with mortality in the uni- or multivariable analyses.

Characteristics (N = 2072)	N (%) by final condition		Crude OR (95% Confidence Interval)	p-value (OR)	aOR (95% CI)	p-value (aOR)
	Deceased	Discharged				
Number of patients	30 (1.4)	2042 (98.6)				
Year of admission				0.485		
2017	2 (6.7)	130 (6.4)	Ref		Ref	
2018	6 (20.0)	615 (30.1)	0.55 (0.13 – 3.02)	0.449	0.69 (0.14 – 4.50)	0.668
2019	22 (73.3)	1297 (63.5)	0.90 (0.28 – 4.52)	0.884	1.26 (0.32 – 7.57)	0.766
Sex						
Male	18 (60.0)	1279 (62.6)	Ref		Ref	
Female	12 (40.0)	763 (37.4)	1.13 (0.53 – 2.31)	0.737	1.51 (0.69 – 3.25)	0.300

Age in months (mean, SD)	32.6 (43.1)	19.7 (28.7)				
Age group (in months)				0.131		
0 – 9	12 (40.0)	890 (43.6)	0.39 (0.15 – 1.09)	0.07	0.21 (0.07 – 0.69)	<b>0.011</b>
9 – 60	12 (40.0)	972 (47.6)	0.36 (0.14 – 0.99)	<b>0.049</b>	0.18 (0.06 – 0.57)	<b>0.004</b>
≥60	6 (20.0)	180 (8.8)	Ref		Ref	
Vaccination status				0.824		
Not vaccinated	26 (86.7)	1782 (87.3)	Ref		Ref	
Vaccinated with ≥1 dose	3 (10.0)	201 (9.8)	1.17 (0.31 – 3.17)	0.79	2.19 (0.53 – 7.12)	0.255
Vaccinated (number of doses unknown)	1 (3.3)	59 (2.9)	1.69 (0.18 – 6.66)	0.563	3.10 (0.33 – 14.51)	0.299
Place of exposure				<b>0.001</b>		
Within VNCH	12 (40.0)	535 (26.2)	Ref		Ref	
Another health care facility	9 (30.0)	232 (11.4)	1.75 (0.72 – 4.11)	0.209	2.43 (0.87 – 6.66)	0.088
Community	9 (30.0)	1272 (62.3)	0.32 (0.13 – 0.75)	<b>0.009</b>	0.72 (0.27 – 1.90)	0.506
Unknown	0 (0.0)	3 (0.1)	6.12 (0.04 – 68.30)	0.339	4.21 (0.03–120.51)	0.466
Distance from the hospital (km)				0.145		
0 – 20	2 (6.7)	466 (22.8)	Ref		Ref	
20 – 200	22 (73.3)	1263 (61.9)	3.32 (1.07 – 16.50)	<b>0.036</b>	4.67 (1.25 – 28.08)	<b>0.019</b>
200 – 500	6 (20.0)	299 (14.6)	4.04 (1.02 – 22.14)	<b>0.045</b>	4.17 (0.86 – 27.98)	0.072
≥500	0 (0.0)	14 (0.7)	6.43 (0.04 – 83.93)	0.332	3.83 (0.02–102.71)	0.515
Region of residence				0.077		
Hanoi	4 (13.3)	710 (34.8)	Ref		N/A	
Northeastern region	5 (16.7)	202 (9.9)	4.28 (1.20 – 16.08)	<b>0.025</b>	N/A	
Northwestern region	3 (10.0)	97 (4.8)	5.66 (1.25 – 23.61)	<b>0.026</b>	N/A	
Red River Delta (except Hanoi)	11 (36.7)	711 (34.8)	2.55 (0.90 – 8.57)	0.077	N/A	
Central region	7 (23.3)	314 (15.4)	3.76 (1.19 – 13.38)	<b>0.024</b>	N/A	

Southern region	0 (0.0)	8 (0.4)	9.28 (0.06 – 98.77)	0.259	N/A	
Duration between onset and admission				<b>0.015</b>		
Admitted before the onset date due to a different disease (<0)	16 (53.3)	595 (29.1)	3.35 (1.45 – 8.49)	<b>0.004</b>	N/A	
0 – 3	7 (23.3)	907 (44.4)	Ref		N/A	
3 – 7	4 (13.3)	448 (21.9)	1.21 (0.34 – 3.83)	0.748	N/A	
7 – 14	1 (3.3)	46 (2.3)	3.90 (0.40 – 18.40)	0.195	N/A	
≥14	2 (6.7)	44 (2.2)	6.79 (1.24 – 26.36)	<b>0.03</b>	N/A	
Unknown	0 (0.0)	2 (0.1)	24.20 (0.16–333.87)	0.146	N/A	
Duration of stay within the hospital				<b>&lt;0.001</b>		
0 – 7	5 (16.7)	1037 (50.8)	Ref		Ref	
7 – 21	13 (43.3)	726 (35.6)	3.50 (1.35 – 10.39)	<b>&lt;0.001</b>	1.96 (0.70 – 6.14)	0.201
≥21	12 (40.0)	279 (13.7)	8.43 (3.20 – 25.32)	<b>&lt;0.001</b>	1.77 (0.49 – 6.75)	0.384
Underlying conditions						
Respiratory system	1 (3.3)	41 (2.0)	2.45 (0.27 – 9.68)	0.35	0.70 (0.00 – 62.30)	0.889
Cardiovascular system	1 (3.3)	71 (3.5)	1.40 (0.15 – 5.44)	0.703	0.17 (0.00 – 7.83)	0.460
Gastrointestinal system	2 (6.7)	92 (4.5)	1.84 (0.37 – 5.72)	0.395	0.75 (0.00 – 57.10)	0.916
Kidney and urology system	0 (0.0)	46 (2.3)	0.70 (0.00 – 5.13)	0.795	0.12 (0.00 – 2.73)	0.196
Immunodeficiency	1 (3.3)	11 (0.5)	8.98 (0.95 – 39.64)	0.053	2.07 (0.00–236.91)	0.802
Neurological system	2 (6.7)	71 (3.5)	2.41 (0.48 – 7.52)	0.239	0.59 (0.00 – 62.22)	0.982
Inherited metabolic disorders	0 (0.0)	15 (0.7)	2.14 (0.01 – 16.59)	0.637	0.94 (0.00–113.47)	0.984
Other underlying conditions	8 (26.7)	151 (7.4)	4.71 (1.99 – 10.20)	<b>&lt;0.001</b>	1.01 (0.00 – 79.56)	0.996
No underlying diseases	15 (50.0)	1570 (76.9)	0.30 (0.14 – 0.61)	<b>0.001</b>	0.28 (0.00 – 21.90)	0.624
Maximal form of respiratory support used						

Oxygen cannula	2 (6.8)	683 (33.4)	7.19 (3.06 – 20.29)	< <b>0.001</b>	N/A	
CPAP	0 (0.0)	8 (0.4)	7.29 (2.24 – 18.92)	<b>0.002</b>	N/A	
Conventional mechanical ventilation	21 (70.0)	123 (6.0)	169.84 (55.25 – 840.85)	< <b>0.001</b>	N/A	
HFO Ventilation	7 (23.3)	4 (0.2)	118.23 (36.86 – 403.66)	< <b>0.001</b>	N/A	
ECMO	0 (0.0)	1 (0.0)	22.31 (0.15–426.93)	0.156	N/A	
Severity				< <b>0.001</b>		
Severe	30 (100.0)	819 (40.1)	91.07 (12.83 – 11541.95)	< <b>0.001</b>	N/A	
Not severe	0 (0.0)	1223 (59.9)	Ref		N/A	
Duration between onset and test (detection time) (in hours)				0.26		
Tested before onset (<0)	1 (3.3)	15 (0.7)	3.88 (0.40 – 18.30)	0.197	N/A	
0 – 24	10 (33.3)	421 (20.6)	Ref		N/A	
24 – 48	4 (13.3)	427 (20.9)	0.42 (0.12 – 1.21)	0.113	N/A	
≥48	15 (50.0)	1177 (57.6)	0.52 (0.24 – 1.20)	0.123	N/A	
Unknown	0 (0.0)	2 (0.1)	8.02 (0.05–107.16)	0.29	N/A	
Diagnosis upon admission						
Measles	6 (20.0)	842 (41.2)	0.37 (0.14 – 0.85)	<b>0.017</b>	3.15 (0.29 – 20.24)	0.313
Bronchopneumonia	16 (53.3)	833 (40.8)	1.65 (0.81 – 3.40)	0.017	7.47 (0.61 – 60.42)	0.108
Other diagnosis	10 (33.3)	381 (18.7)	2.23 (1.01 – 4.63)	<b>0.046</b>	6.52 (0.43 – 67.93)	0.165
Complications						
Gastroenteritis	0 (0.0)	51 (2.5)	0.63 (0.00 – 4.61)	0.731	N/A	
Middle ear infection	0 (0.0)	30 (1.5)	1.08 (0.00 – 8.01)	0.956	N/A	
Conjunctivitis	0 (0.0)	2 (0.1)	13.38 (0.09–169.03)	0.208	N/A	

Laryngitis	0 (0.0)	7 (0.3)	4.44 (0.03 – 37.94)	0.405	N/A	
Pneumonia bronchitis	25 (83.3)	1388 (68.0)	2.18 (0.93 – 6.16)	0.074	N/A	
Febrile seizures	0 (0.0)	10 (0.5)	3.17 (0.02 – 25.64)	0.499	N/A	
Sepsis/Septic shock	1 (3.3)	3 (0.1)	29.63 (2.81–186.83)	<b>0.009</b>	N/A	
Co-infections						
Influenza A	0 (0.0)	16 (0.8)	2.01 (0.01 – 15.50)	0.662	N/A	
Influenza B	0 (0.0)	4 (0.2)	7.42 (0.05 – 71.98)	0.295	N/A	
Staphylococcus aureus	0 (0.0)	3 (0.1)	9.55 (0.07–101.65)	0.254	N/A	
Streptococcus pneumonia	0 (0.0)	2 (0.1)	3.38 (0.09–169.03)	0.208	N/A	
Respiratory Syncytical Virus (RSV)	1 (3.3)	29 (1.4)	3.47 (0.38 – 13.94)	0.217		
Adenovirus	11 (36.7)	84 (4.1)	13.66 (6.21 – 28.85)	<b>&lt;0.001</b>	7.46 (2.95 – 18.51)	<b>&lt;0.001</b>
Pertussis	0 (0.0)	17 (0.8)	1.89 (0.01 – 14.53)	0.686		
Other co-infections	3 (10.0)	15 (0.7)	16.64 (4.16 – 51.24)	<b>&lt;0.001</b>	7.01 (1.08 – 39.01)	<b>0.042</b>

Table 4: Association with mortality among hospitalized patients

#### 4. Discussions

In this study, we present the epidemiological and clinical characteristics of more than 2,000 children hospitalized with measles in Hanoi, the vast majority during Vietnam’s 2017-19 epidemic. To the best of our knowledge, this study is one of the few that provides data on the number of severe cases. According to the caregiver report or immunization card, 1,808 (87.3%) had not received any MCV. More than half of the individuals in our study reported the community as the likely place of infection exposure, suggesting secondary cases. 69.3% of patients live in the Red River Delta, with 34.5% living in Hanoi, Vietnam’s second most densely populated region, with a population of 2209, 2239, and 2410 per square kilometre in 2017, 2018, and 2019 respectively [16, 17, 18]. Crowded environments and high concentrations of people have known risk factors for disease occurrence and propagation, and Hanoi has been cited as a hotspot of prior epidemics in the country [19, 20]. During the epidemic, children admitted from further distances are most likely referrals from other hospitals due to complications. Despite the high number of hospital admissions and the severity rate, the mortality rate of 1.4% discovered in this study of patients hospitalized with measles is relatively low lower than the global norm. A systematic review and modelling analysis, encompassing various studies, reported an overall pooled mean case fatality rate for measles of 2.2%, with an in-hospital mortality rate ranging from 0.9% to 6.0%, higher than the rate observed in this study [21]. The



lower in-hospital mortality rate observed here may be attributed to several factors, including increased measles vaccination coverage, heightened public awareness and recognition, a higher rate of hospitalization, and prompt treatment. Additionally, the fact that the study was conducted at a national-level hospital, where patients with severe symptoms receive appropriate medical care, may have contributed to the lower mortality rate.

The median age of children was under 10 months. Children aged 9 months to 5 years accounted for 12 (60%) of the 30 deaths. To boost MCV1 coverage and reduce cases and deaths in this age range, routine immunization must be strengthened. The strategy is less obvious for the 40% of deaths in infants under the age of 9 months, before their scheduled MCV1. Measles vaccination at 4 to 5 months of age was beneficial in preventing serologically confirmed and definite clinical measles during an outbreak in Guinea-Bissau in 2003-2004 [22]. In late 2018, 4.2 million children aged 1 to 5 received measles vaccine as part of an additional measles-rubella immunization campaign [9]. In the event of future epidemics, these measures must be swift and effective. The earlier timing of MCV in low-income settings where maternal antibody levels may be low requires further evaluation. Upon admission, 849 (41.0%) children have bronchopneumonia. Most children had complications, with bronchopneumonia, the most common measles complication, observed in two-thirds of cases (68.2%). This prevalence of bronchopneumonia was higher than that reported in Greece (46.2%), Israel (30.5%), China (33%), and Serbia (26.8%), although these studies included adolescent cases, which could have affected the aggregated results [23, 24, 25, 26]. Tu et al. reported that measles-associated pneumonia was associated with younger age, which explains the higher rate of pneumonia in our study [25]. There was no additional information on the pathogens causing pneumonia or gastroenteritis, or the nature of the neurological complications.

There were no statistically significant differences in the risk of severe complications or mortality between the two genders. The odds of death increased by more than three times for children living 20 to 200 kilometres away from the hospital and by more than four times for children living 200 to 500 kilometres away, likely reflecting the increment in travel time to VNCH and referrals from other healthcare institutions due to complications. Children with bronchopneumonia complications had a greater risk of death, as expected and consistent with earlier research [27, 28]. Compared to children who had received one or more doses of MCV, the odds of severity were more than three times greater in unvaccinated children. Vaccine-modified measles is characterized by a milder illness in children with preexisting protection following vaccination [29, 30]. Patients with community transmission have lower risk of severe forms of disease and mortality rates than patients exposed to other sources. The severity rate increased fivefold and the mortality rate increased more than tenfold with adenovirus infection.

It is not a question of if, but when the next measles epidemic will occur in Vietnam and other countries. Reported measles cases have reduced from the last six months of 2020 to 2022, likely due to COVID-19 social distancing measures, reduced domestic and international travel, disturbance in surveillance and reporting, and the phase of the measles epidemic cycle [7]. Furthermore, the Vietnam Ministry of Health listed measles on the list of group B infectious diseases requiring medical isolation as well as expanded vaccination for subjects aged 6-9 months, combined with other reasonable measures to control epidemics from hospitals, limiting the spread of measles in hospitals [31]. However, at the same time, the COVID-19 pandemic has significantly disrupted routine vaccination practices, with estimates of more than 90 million children missing measles vaccine doses by October 2020, and reports of a lost generation of children [32]. MCV1 coverage fell from an average of 85% during 2015-2019 to 84% in 2020 and 81% in 2021, the lowest coverage levels for MCV1 since 2008. The most significant declines in MCV1 coverage during 2019-2021 occurred in the South-East Asia Region (from 94% to 86%) and the Western Pacific Region (from 95% to 91%). MCV2 coverage grew from 63% to 71% between 2015 and 2019, suggesting second-dose introductions in many countries.

However, MCV2 coverage remained stable thereafter (72% in 2020 and 71% in 2021), with only four additional countries deploying MCV2 during 2020-2021 [33]. Vaccination coverage in Vietnam declined further to 89% for MCV1 and 85% for MCV2 in 2021 [34]. When COVID-19 limitations are lifted, an increasing number of unvaccinated children who are susceptible to measles creates an environment for measles to resurface [35]. Repeated occurrences of measles outbreaks in Vietnam highlight the significance of re-evaluating measles virus dynamics and prevention and control strategies. Actions are required to reach unimmunised children through catch-up campaigns and to prepare for anticipated outbreaks. Governments must not lose sight of the Measles and Rubella Strategic Framework, 2021-2030 [36].

This study has certain limitations. The patients enrolled in this study are those that were admitted to our hospital, whose illness may be more severe and are not representative of all measles cases in Vietnam. Nonetheless, since patients come from various regions across the country, they still offer insights into the broader measles landscape in Vietnam. Detailed data were partially lacking on the number of MCVs and the place of exposure though the medical files were thoroughly checked, and the percentage of missing data was quite low for almost all variables. Nonetheless, we were able to analyze a large sample of over 2,000 measles cases with extensive clinical information and other socio-demographic characteristics using the measles suspected case inquiry form.

In conclusion, in this study, we report clinical and epidemiological characteristics from a significant measles outbreak that primarily affected unvaccinated children admitted to VNCH with significant number of deaths occurred among infants aged less than nine months. As MCV1 coverage in Vietnam declined to 89% in 2021, routine immunization needs to be strengthened and the earlier timing of MCV1 requires further evaluation to prevent further outbreaks.

## References

- [1] F. M. Guerra, S. Bolotin, G. Lim, J. Heffernan, S. L. Deeks, Y. Li, N. S. Crowcroft, The basic reproduction number ( $R_0$ ) of measles: a systematic review, *Lancet Infect. Dis.* 17 (12) (2017) e420–e428.
- [2] S. L. Katz, John f. Enders and measles virus vaccine—a reminiscence, *Curr. Top. Microbiol. Immunol.* 329 (2009) 3–11.
- [3] World Health Organization, Measles, accessed on June 06, 2023 (2023).  
URL <https://www.who.int/news-room/fact-sheets/detail/measles>
- [4] World Health Organization, Global measles and rubella Strategic Plan: 2012-2020, World Health Organization, 2012.
- [5] World Health Organization, Worldwide measles deaths climb 50% from 2016 to 2019 claiming over 207 500 lives in 2019, accessed on June 06, 2023 (2020).  
URL <https://www.who.int/news/item/12-11-2020-worldwide-measles-deaths-climb-50-from-2016-to-2019-claiming-over-207-500-lives-in-2019>
- [6] M. K. Patel, J. L. Goodson, J. P. Alexander, Jr, K. Kretsinger, S. V. Sodha, C. Steulet, M. Gacic-Dobo, P. A. Rota, J. McFarland, L. Menning, M. N. Mulders, N. S. Crowcroft, Progress toward regional measles elimination - worldwide, 2000-2019, *MMWR Morb. Mortal. Wkly. Rep.* 69 (45) (2020) 1700–1705.
- [7] World Health Organization Regional Office for the Western Pacific, Measles - rubella bulletin 2023, accessed on June 11, 2023 (2023).  
URL <https://apps.who.int/iris/handle/10665/366144>

- [8] World Health Organization, Measles cases spike globally due to gaps in vaccination coverage, accessed on June 11, 2023 (2018).  
URL <https://www.who.int/news/item/29-11-2018-measles-cases-spike-globally-due-to-gaps-in-vaccination-coverage>
- [9] Ministry of Health of Vietnam, Decree no. 137/qd-byt regarding the planning for prevention and control of infectious diseases in 2020, accessed on June 11, 2023 (2020).  
URL <https://thuvienphapluat.vn/van-ban/The-thao-Y-te/Quyết-dinh-137-QĐ-BYT-2020-Ke-hoach-Phong-chong-dich-benh-truyen-nhiem-433228.aspx>
- [10] UNICEF, Alarming global surge of measles cases a growing threat to children – unicef, accessed on June 11, 2023 (2019).  
URL <https://www.unicef.org/vietnam/press-releases/alarming-global-surge-measles-cases-growing-threat-children-unicef>
- [11] Ministry of Health of Vietnam Portal, Medical news - july 6, 2019, accessed on June 11, 2023 (2019).  
URL [https://moh.gov.vn/diem-tin-y-te/-/asset\\_publisher/sqTagDPp4aRX/content/-iem-tin-y-te-ngay-06-7-2019](https://moh.gov.vn/diem-tin-y-te/-/asset_publisher/sqTagDPp4aRX/content/-iem-tin-y-te-ngay-06-7-2019)
- [12] The pandas development team, pandas-dev/pandas: Pandas (Feb. 2020). doi:10.5281/zenodo.3509134.  
URL <https://doi.org/10.5281/zenodo.3509134>
- [13] G. Heinze, M. Ploner, L. Jiricka, logistf: Firth's Bias-Reduced Logistic Regression, r package version 1.24 (2020).  
URL <https://CRAN.R-project.org/package=logistf>
- [14] geopy 2.3.0 (2022).  
URL <https://pypi.org/project/geopy/>
- [15] Microsoft Learn, Azure maps overview, accessed on June 11, 2023 (2022).  
URL <https://learn.microsoft.com/en-us/rest/api/maps/>
- [16] General Statistics Office, Statistical yearbook of viet nam 2017, accessed on June 11, 2023 (2018).  
URL <https://www.gso.gov.vn/du-lieu-va-so-lieu-thong-ke/2019/10/nien-giam-thong-ke-2017-2/>
- [17] General Statistics Office, Statistical yearbook of viet nam 2018, accessed on June 11, 2023 (2019).  
URL <https://www.gso.gov.vn/du-lieu-va-so-lieu-thong-ke/2019/10/nien-giam-thong-ke-2018/>
- [18] General Statistics Office, Statistical yearbook of viet nam 2019, accessed on June 11, 2023 (2020).  
URL <https://www.gso.gov.vn/du-lieu-va-so-lieu-thong-ke/2020/09/nien-giam-thong-ke-day-du-nam-2019/>
- [19] M. Choisy, S. T. Trinh, T. N. D. Nguyen, T. H. Nguyen, Q. L. Mai, Q. T. Pham, N. D. Tran, D. A. Dang, P. W. Horby, M. F. Boni, J. Bryant, S. O. Lewycka, B. Nadjm, H. R. Van Doorn,

- H. F. L. Wertheim, Sero-prevalence surveillance to predict vaccine-preventable disease outbreaks; a lesson from the 2014 measles epidemic in northern vietnam, *Open Forum Infect. Dis.* 6 (3) (2019) ofz030.
- [20] S. Qin, Y. Ding, R. Yan, H. He, Measles in zhejiang, china, 2004-2017: Population density and proportion of floating populations effects on measles epidemic, *Health Secur.* 17 (3) (2019) 193–199.
- [21] A. Portnoy, M. Jit, M. Ferrari, M. Hanson, L. Brenzel, S. Verguet, Estimates of case-fatality ratios of measles in low-income and middle-income countries: a systematic review and modelling analysis, *Lancet Glob. Health* 7 (4) (2019) e472–e481.
- [22] C. L. Martins, M.-L. Garly, C. Balé, A. Rodrigues, H. Ravn, H. C. Whittle, I. M. Lisse, P. Aaby, Protective efficacy of standard Edmonston-Zagreb measles vaccination in infants aged 4.5 months: interim analysis of a randomised clinical trial, *BMJ* 337 (jul24 2) (2008) a661.
- [23] P. C. Fragkou, K. Thomas, S. Sympardi, G. D. Liatsos, M. Pirounaki, H. Sambatakou, T. Marantos, E. Karofylakis, S. P. Dourakis, S. Tsiodras, D. Kavvatha, Clinical characteristics and outcomes of measles outbreak in adults: A multicenter retrospective observational study of 93 hospitalized adults in greece, *J. Clin. Virol.* 131 (104608) (2020) 104608.
- [24] E. Ben-Chetrit, Y. Oster, A. Jarjou'i, O. Megged, T. Lachish, M. J. Cohen, C. Stein-Zamir, H. Ivgi, M. Rivkin, Y. Milgrom, D. Averbuch, M. Korem, D. G. Wolf, Y. Wiener-Well, Measles-related hospitalizations and associated complications in jerusalem, 2018-2019, *Clin. Microbiol. Infect.* 26 (5) (2020) 637–642.
- [25] B. Tu, J.-J. Zhao, Y. Hu, J.-L. Fu, H.-H. Huang, Y.-X. Xie, X. Zhang, L. Shi, P. Zhao, X.-W. Zhang, D. Wu, Z. Xu, Z.-P. Zhou, E.-Q. Qin, F.-S. Wang, Clinical and immunological analysis of measles patients admitted to a beijing hospital in 2014 during an outbreak in china, *Epidemiol. Infect.* 144 (12) (2016) 2613–2620.
- [26] S. Medić, V. Petrović, G. Lončarević, M. Kanazir, I. Begović Lazarević, S. Rakić Adrović, M. Bančević, C. P. Muller, J. M. Hübschen, Epidemiological, clinical and laboratory characteristics of the measles resurgence in the Republic of Serbia in 2014-2015, *PLoS One* 14 (10) (2019) e0224009.
- [27] C. T. Lee, J. E. Hagan, B. Jantsansengee, O.-E. Tumurbaatar, S. Altanchimeg, B. Yadamsuren, S. Demberelsuren, C. Tserendorj, O. Munkhtogoo, D. Badarch, N. Gunregjav, B. Baatarkhuu, C. Ochir, L. Berman, R. Anderson, M. K. Patel, C. J. Gregory, J. L. Goodson, Increase in infant measles deaths during a nationwide measles outbreak—mongolia, 2015–2016, *The Journal of Infectious Diseases* 220 (11) (2019) 1771–1779. doi:10.1093/infdis/jiz140. URL <https://doi.org/10.1093/infdis/jiz140>
- [28] M. Donadel, A. Stanescu, A. Pistol, B. Stewart, C. Butu, D. Jankovic, B. Paunescu, L. Zimmerman, Risk factors for measles deaths among children during a nationwide measles outbreak - romania, 2016-2018, *BMC Infect. Dis.* 21 (1) (2021) 279.
- [29] W. J. Moss, Measles, *Lancet* 390 (10111) (2017) 2490–2502.
- [30] Y. J. Choe, J. K. Hu, K. M. Song, H. Cho, H. S. Yoon, S. T. Kim, H. J. Lee, K. Kim, G.-R. Bae, J.-K. Lee, Evaluation of an expanded case definition for vaccine-modified measles in a school outbreak in south korea in 2010, *Jpn. J. Infect. Dis.* 65 (5) (2012) 371–375.

- [31] Decree no. 17/2019/tt-byt as guidelines for surveillance and response to infectious diseases, accessed on July 08, 2023 (2019).  
URL <https://thuvienphapluat.vn/van-ban/The-thao-Y-te/Thong-tu-17-2019-TT-BYT-huong-dan-giam-sat-va-dap-ung-voi-benh-dich-benh-truyen-nhiem-418884.aspx>
- [32] K. Mulholland, K. Kretsinger, L. Wondwossen, N. Crowcroft, Action needed now to prevent further increases in measles and measles deaths in the coming years, *Lancet* 396 (10265) (2020) 1782–1784.
- [33] A. Rachlin, M. C. Danovaro-Holliday, P. Murphy, S. V. Sodha, A. S. Wallace, Routine vaccination coverage - worldwide, 2021, *MMWR Morb. Mortal. Wkly. Rep.* 71 (44) (2022) 1396–1400.
- [34] Viet nam: Who and unicef estimates of immunization coverage: 2021 revision, accessed on June 08, 2023 (2022).  
URL <https://data.unicef.org/wp-content/uploads/2022/07/vnm.pdf>
- [35] Ho chi minh city: The risk of an additional measles epidemic superimposed on the existing one, accessed on July 08, 2023 (2022).  
URL <https://www.medinet.hochiminhcity.gov.vn/phong-chong-dich-benh/tp-ho-chi-minh-nguy-co-them-dich-soi-chong-len-dich-benh-hien-huu-cmobile2-66819.aspx>
- [36] WHO, Measles and rubella strategic framework: 2021-2030, accessed on June 08, 2023 (2020).  
URL <https://www.who.int/publications/i/item/measles-and-rubella-strategic-framework-2021-2030>
- [37] Essential Programme on Immunization, Immunization, Vaccines and Biologicals, World Health Organization, Measles: Vaccine preventable diseases surveillance standards, accessed on June 11, 2023 (2018).  
URL <https://www.who.int/publications/m/item/vaccine-preventable-diseases-surveillance-standards-measles>
- [38] The most complete immunization schedule for children by age (in months), accessed on July 09, 2023 (2023).  
URL <https://vnvc.vn/lich-tiem-chung-day-du-nhat-cho-tre-theo-tung-thang-tuoi/>