

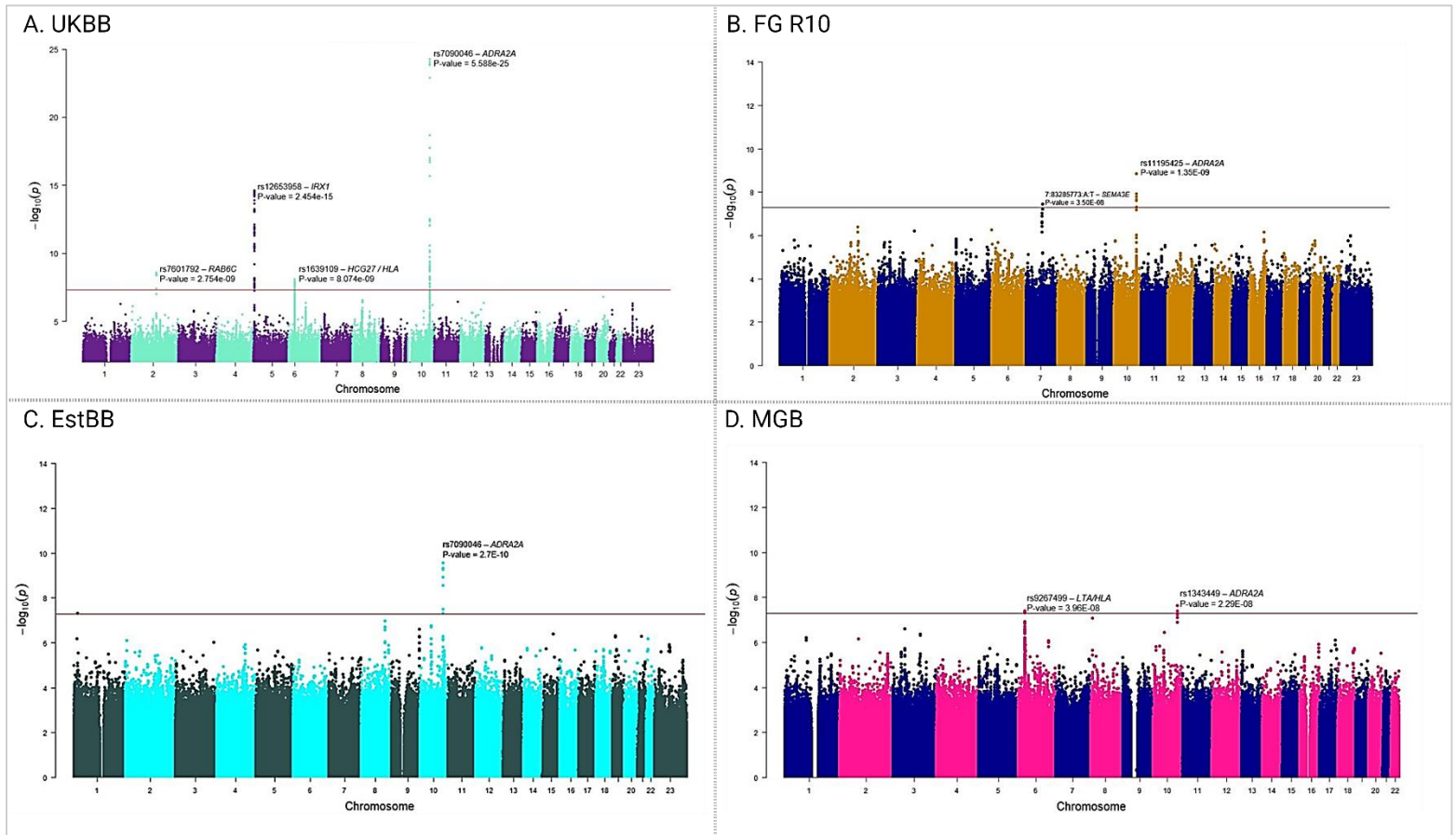
Supplementary file

Table of Contents

Supplementary Figures	2
Supplementary figure 1. Manhattan plots from all used cohorts	2
Supplementary figure 2. Manhattan plots UKB and FinnGen R10 – females and males	3
Supplementary figure 3. Co-localization plot for rs1343449	4
Supplementary Tables	4
Supplementary table 1. Cohort demographics	4
Supplementary table 2. Cohort specific lead variants	5
Supplementary table 3. Sample size meta-analysis UKB, FinnGen R10, the Estonian Biobank and the Mass-General Brigham Biobank lead variants	6
Supplementary table 4. Comparison of the lead variant in different cohorts.....	6
Supplementary table 5. ENCODE stratified LD score regression	7
Supplementary table 6. GuideRNA sequences targeting rs7090046 in CRISPRi analysis	7

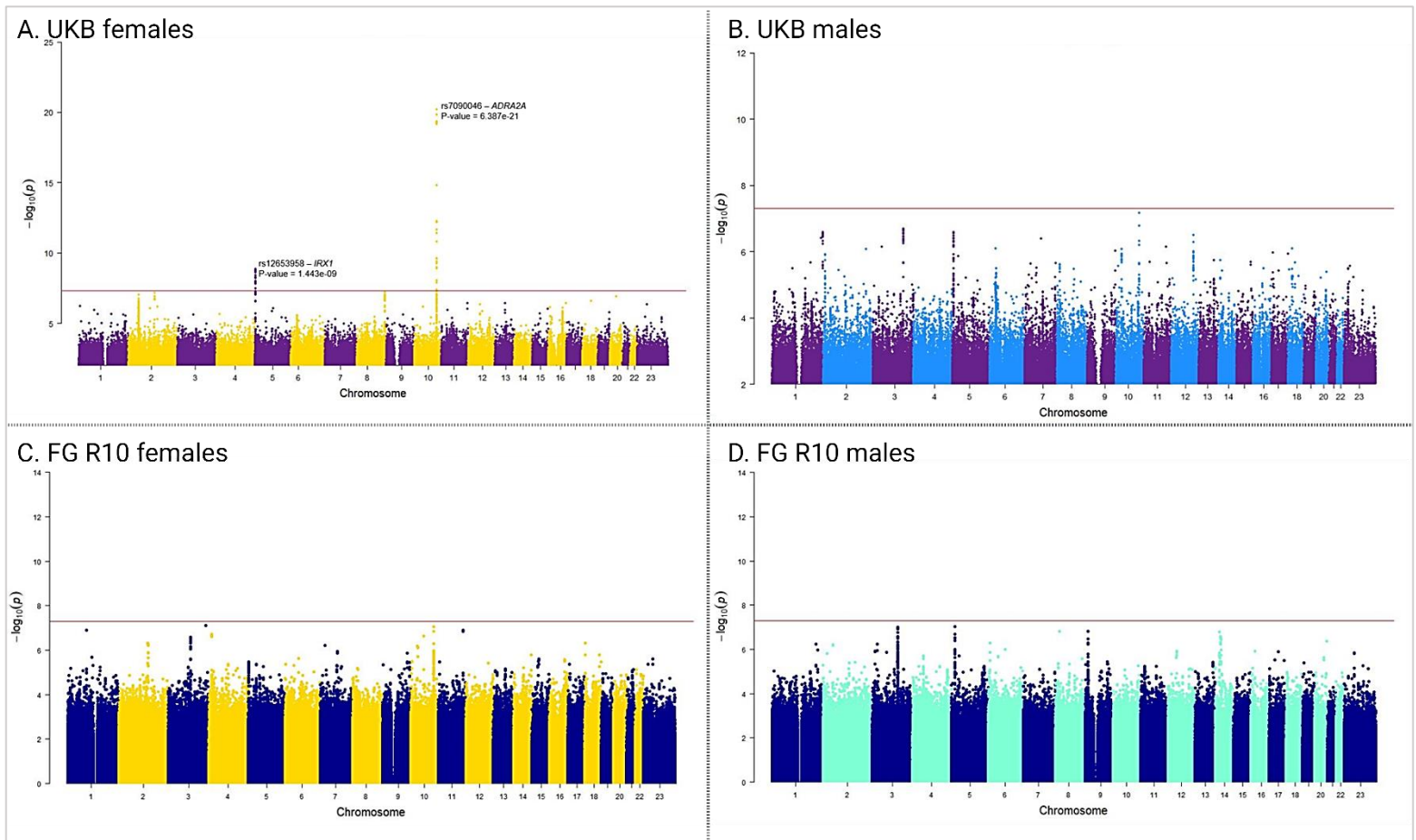
Supplementary Figures

Supplementary figure 1. Manhattan plots from all used cohorts



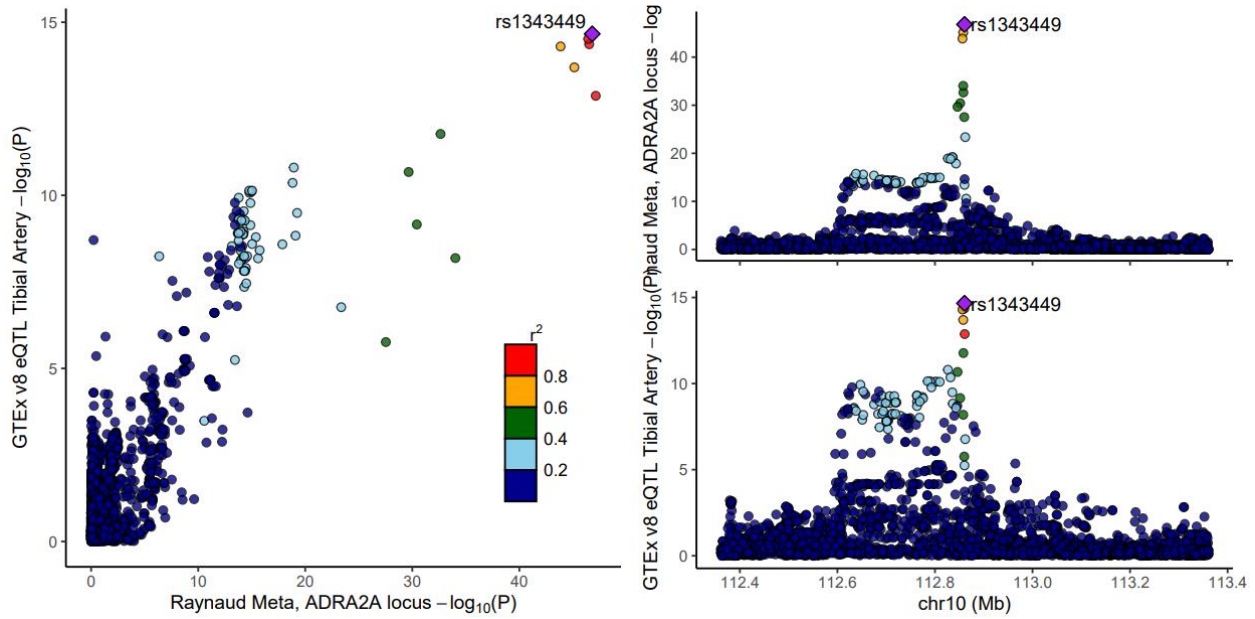
Suppl.Fig.1. Manhattan plots from GWA analyses A. UK Biobank, B. FinnGen data freeze 10, C. the Estonian Biobank, and D. the Mass-General Brigham Biobank.

Supplementary figure 2. Manhattan plots UKB and FinnGen R10 – females and males



Suppl.Fig.2. Manhattan plots from sex-specific GWA analyses A. UK Biobank females, B. UK Biobank males, C. FinnGen data freeze 10 females, and D. FinnGen data freeze 10 males.

Supplementary figure 3. Co-localization plot for rs1343449



Suppl. Fig. 3. Raynaud's syndrome association colocalizes with the lead variant for *ADRA2A* expression in GTEx in tibial arteries (rs1343449).

Supplementary Tables

Supplementary table 1. Cohort demographics

Cohort	RS cases	RS controls	Mean age of onset [SD]	Females in cases (%)
UKBB	5,162	440,833	54.73 [14.13]	3,691 (71.5%)
FinnGen R10	2,084	410,148	51.14 [16.20]	1,446 (69.4%)
Estonia Biobank	2,205	203,345	43.03 [15.37]	1,672 (75.8%)
Mass General Brigham	1,907	52,545	*NA	1,507 (79.0%)
Combined	11,358	1,106,871	49.63 [15.23]	8,510 (73.2%)

*Information is not available for this cohort

Supplementary table 2. Cohort specific lead variants

FinnGen R10 top 5 variants

SNP	CHR	POS (b38)	Ref.	Alt.	Combined Alt.AF	P-value	Beta	SE
rs11195425	10	111100270	A	T	0.129	1.35x10 ⁻⁰⁹	0.266	0.044
rs7090046	10	111101172	G	A	0.247	1.19x10 ⁻⁰⁸	0.201	0.035
rs1343451	10	111100633	A	G	0.247	1.58x10 ⁻⁰⁸	0.199	0.035
rs1343449	10	111100768	A	G	0.247	2.12x10 ⁻⁰⁸	0.197	0.035
rs7084501	10	111099941	A	G	0.248	2.50x10 ⁻⁰⁸	0.196	0.035

UKB top 5 variants

SNP	CHR	POS (b37)	Ref.	Alt.	Combined Alt.AF	P-value	Beta	SE
rs7090046	10	112860930	G	A	0.310	5.59x10 ⁻²⁵	0.217	0.021
rs7084501	10	112859699	A	G	0.314	8.65x10 ⁻²⁵	0.216	0.021
rs1343449	10	112860526	A	G	0.316	1.27x10 ⁻²⁴	0.214	0.021
rs7075626	10	112857971	G	C	0.333	1.39x10 ⁻²⁴	0.214	0.021
rs1343451	10	112860391	A	G	0.314	1.50x10 ⁻²⁴	0.214	0.021

The EstBB top 5 variants

SNP	CHR	POS (b37)	Ref.	Alt.	Combined Alt.AF	P-value	Beta	SE
rs7090046	10	112860930	G	A	0.234	2.68x10 ⁻¹⁰	0.227	0.036
rs1343449	10	112860526	A	G	0.235	4.72x10 ⁻¹⁰	0.223	0.036
rs7084501	10	112860391	A	G	0.239	4.95x10 ⁻¹⁰	0.222	0.036
rs1343451	10	112859699	A	G	0.235	5.25x10 ⁻¹⁰	0.222	0.036
rs7075626	10	112857971	G	C	0.269	1.17x10 ⁻⁰⁹	0.209	0.034

The Mass-General Brigham Biobank top 5 variants

SNP	CHR	POS (b38)	Ref.	Alt.	Combined Alt.AF	P-value	Beta	SE
rs1343449	10	111100768	A	G	0.329	2.29x10 ⁻⁰⁸	0.186	0.033
rs9267499	6	31569519	G	C	0.105	3.96x10 ⁻⁰⁸	-0.297	0.056
rs1343451	10	111100633	A	G	0.334	4.06x10 ⁻⁰⁸	0.181	0.033
rs4947324	6	31560353	C	T	0.105	4.82x10 ⁻⁰⁸	-0.295	0.056
rs7084501	10	111099941	A	G	0.331	4.97x10 ⁻⁰⁸	0.181	0.033

Supplementary table 3. Sample size meta-analysis UKB, FinnGen R10, the Estonian Biobank and the Mass-General Brigham Biobank lead variants

SNP	CHR	POS (b38)	Ref.	Alt.	P-value	Heterogeneity P-value	Locus name
rs7090046	10	111101172	G	A	4.08x10 ⁻⁴⁴	0.001	<i>ADRA2A</i>
rs56324263	5	4045532	C	T	8.21x10 ⁻²³	0.028	<i>IRX1</i>
rs3130968	6	31097294	C	T	8.11x10 ⁻¹²	0.244	<i>C6orf15/HLA</i>
rs743507	7	151010400	C	T	1.79x10 ⁻⁰⁹	0.172	<i>NOS3</i>
rs6988032	8	50580957	G	T	5.28x10 ⁻⁰⁸	0.201	<i>SNTG1</i>

Supplementary table 4. Comparison of the lead variant in different cohorts

SNP	FinnGen R10	UK Biobank	The Estonian Biobank	The Mass General Brigham Biobank	Meta-analysis
rs7090046	P = 1.19x10 ⁻⁰⁸ Beta = 0.201 SE = 0.035	P = 5.59x10 ⁻²⁵ Beta = 0.217 SE = 0.021	P = 2.40x10 ⁻¹¹ Beta = 0.260 SE = 0.038	P = 5.84x10 ⁻⁰⁸ Beta = 0.181 SE = 0.033	P = 7.32x10 ⁻⁴⁸ Beta = 0.213 SE = 0.015

Supplementary table 5. ENCODE stratified LD score regression

Name	Coefficient	Coefficient_std_error	Coefficient_P_value
Stomach_Smooth_Muscle__H3K4me1	8.40 x10 ⁻⁰⁹	2.77 x10 ⁻⁰⁹	1.20 x10 ⁻⁰³
Stomach_Smooth_Muscle__H3K27ac	6.04 x10 ⁻⁰⁹	2.11 x10 ⁻⁰⁹	2.12 x10 ⁻⁰³
Rectal_Smooth_Muscle__H3K4me1	6.99 x10 ⁻⁰⁹	2.51 x10 ⁻⁰⁹	2.70 x10 ⁻⁰³
Duodenum_Smooth_Muscle__H3K4me1	8.65 x10 ⁻⁰⁹	3.16 x10 ⁻⁰⁹	3.08 x10 ⁻⁰³
Fetal_Stomach__H3K4me1	7.27 x10 ⁻⁰⁹	2.66 x10 ⁻⁰⁹	3.09 x10 ⁻⁰³
Esoph-Mucosa_ENTEX__H3K4me1	4.76 x10 ⁻⁰⁹	1.89 x10 ⁻⁰⁹	5.94 x10 ⁻⁰³
Artery-Coronary_ENTEX__H3K27ac	5.51 x10 ⁻⁰⁹	2.31 x10 ⁻⁰⁹	8.46 x10 ⁻⁰³
Stomach_Smooth_Muscle__H3K4me3	1.21 x10 ⁻⁰⁸	5.15 x10 ⁻⁰⁹	9.49 x10 ⁻⁰³
Vagina_ENTEX__H3K4me3	1.58 x10 ⁻⁰⁸	6.80 x10 ⁻⁰⁹	0.010
Spleen__H3K4me3	1.29 x10 ⁻⁰⁸	5.58 x10 ⁻⁰⁹	0.011
NHDF- Ad_Adult_Dermal_Fibroblast_Primary_Cells__DNase	9.51 x10 ⁻⁰⁹	4.16 x10 ⁻⁰⁹	0.011
Fetal_Muscle_Trunk__H3K4me1	4.05 x10 ⁻⁰⁹	1.84 x10 ⁻⁰⁹	0.014
Vagina_ENTEX__H3K27ac	3.87 x10 ⁻⁰⁹	1.76 x10 ⁻⁰⁹	0.014
Fetal_Stomach__H3K27ac	6.66 x10 ⁻⁰⁹	3.04 x10 ⁻⁰⁹	0.014
Rectal_Smooth_Muscle__H3K27ac	4.24 x10 ⁻⁰⁹	1.96 x10 ⁻⁰⁹	0.015
Aorta__H3K4me3	2.03 x10 ⁻⁰⁸	9.66 x10 ⁻⁰⁹	0.018
Esoph-Mucosa_ENTEX__H3K36me3	6.09 x10 ⁻⁰⁹	3.00 x10 ⁻⁰⁹	0.021
Foreskin_Fibroblast_Primary_Cells_skin02__H3K4me1	4.10 x10 ⁻⁰⁹	2.04 x10 ⁻⁰⁹	0.022

Supplementary table 6. GuideRNA sequences targeting rs7090046 in CRISPRi analysis

Position	Strand	Sequence	PAM	Specificity Score	Efficiency Score
111101236	1	CACCGggcgtagtgtgactgatgtgat	ggg	76.2198801	68.94539763892847
111101150	1	CACCGtacaattgaggaaacagaa	agg	41.2282928	65.98685688262587
111101243	1	CACCGtgactgatgtgatgggtcag	ggg	58.2509063	65.63862659271983