

Supporting Information

Non-invasive vagus nerve stimulation conditions increased invigoration and wanting in depression

Magdalena Ferstl^{1*}, Anne Kühnel^{2*}, Johannes Klaus¹, Wy Ming Lin^{1,4},
& Nils B. Kroemer¹⁻³

¹ Department of Psychiatry and Psychotherapy, Tübingen Center for Mental Health, University of Tübingen, Tübingen, Germany

² Section of Medical Psychology, Department of Psychiatry and Psychotherapy, Faculty of Medicine, University of Bonn, Bonn, Germany

³ German Center for Mental Health

⁴ Hector Research Institute for Education Science and Psychology, University of Tübingen, Tübingen, Germany

* Equal contribution

Corresponding author*

Prof. Dr. Nils B. Kroemer, nkroemer@uni-bonn.de

Venusberg Campus 1, 53127 Bonn, Germany

Figures

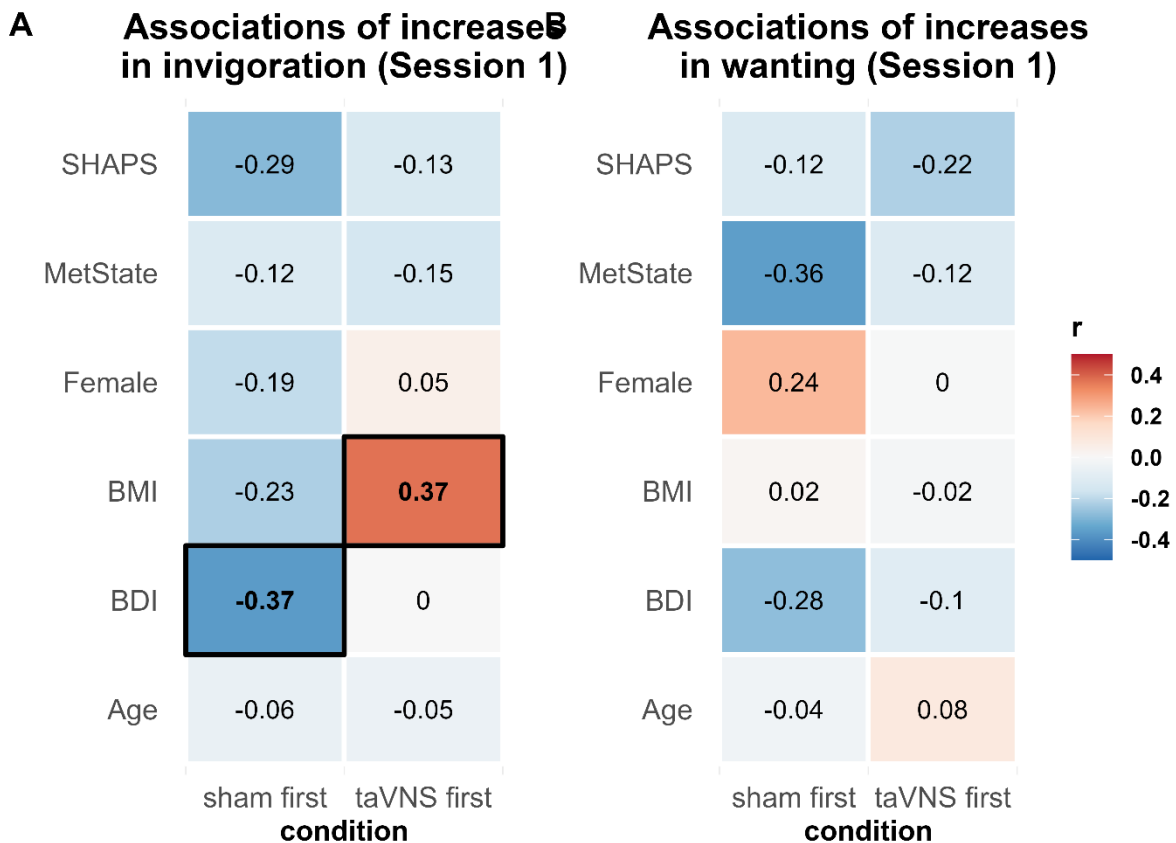


Figure S1: taVNS-induced trial-wise increases in invigoration during session 1 depend on BMI and reduce differences related to depressive symptoms. A) Correlations of trial-wise increased in invigoration during session 1 with baseline characteristics separated for sham and taVNS. In the sham condition, more depressive symptoms are associated with decreased in invigoration from trial-to-trial ($r(28) = .37, p = .046$). In contrast, during taVNS symptom severity does not affect changes across trials ($r(27) = .001, p = .99$). Moreover, taVNS induced increased are higher in participants with an increased BMI ($r(27) = .37, p = .046$). SHAPS = Snaith Hamilton Pleasure Scale, BMI = Body mass index, BDI = Beck Depression Inventory, taVNS = transcutaneous vagus nerve stimulation.

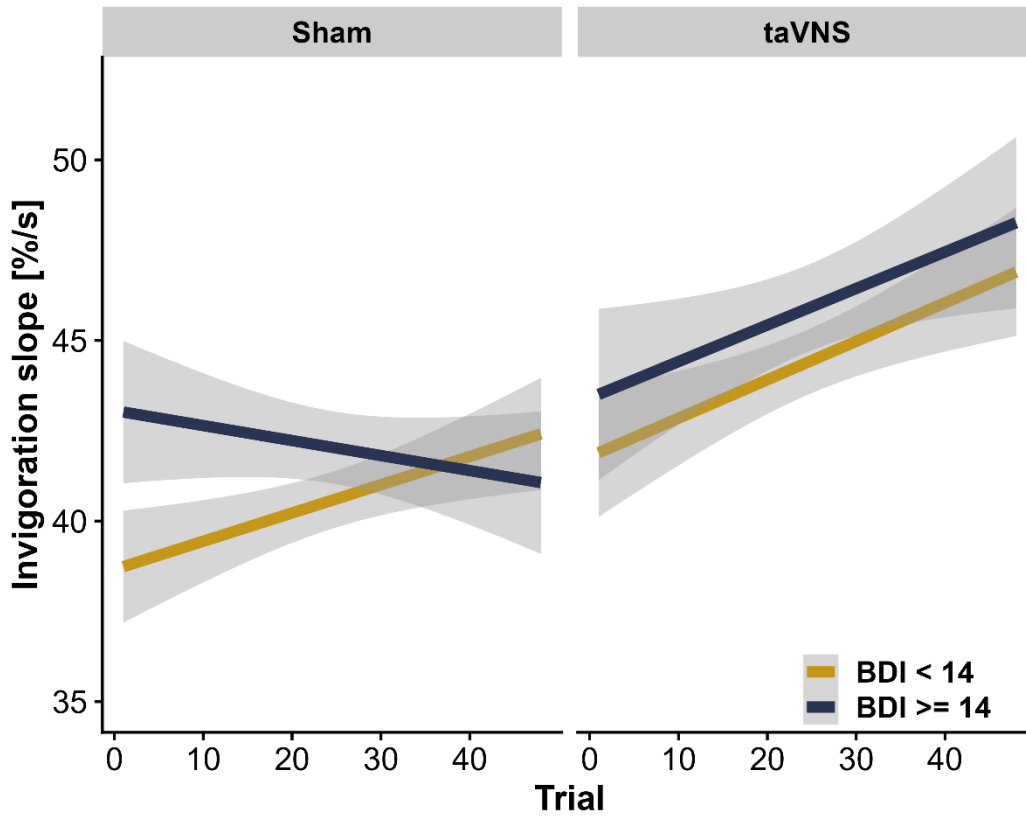


Figure S2: In Session 1, trial-wise increases in invigoration slope depend on depressive symptom severity (Beck Depression Inventory, BDI) in the sham condition ($r(28) = .37, p = .046$), but not the transcutaneous auricular vagus nerve stimulation (taVNS) condition ($r(27) = .001, p = .99$).

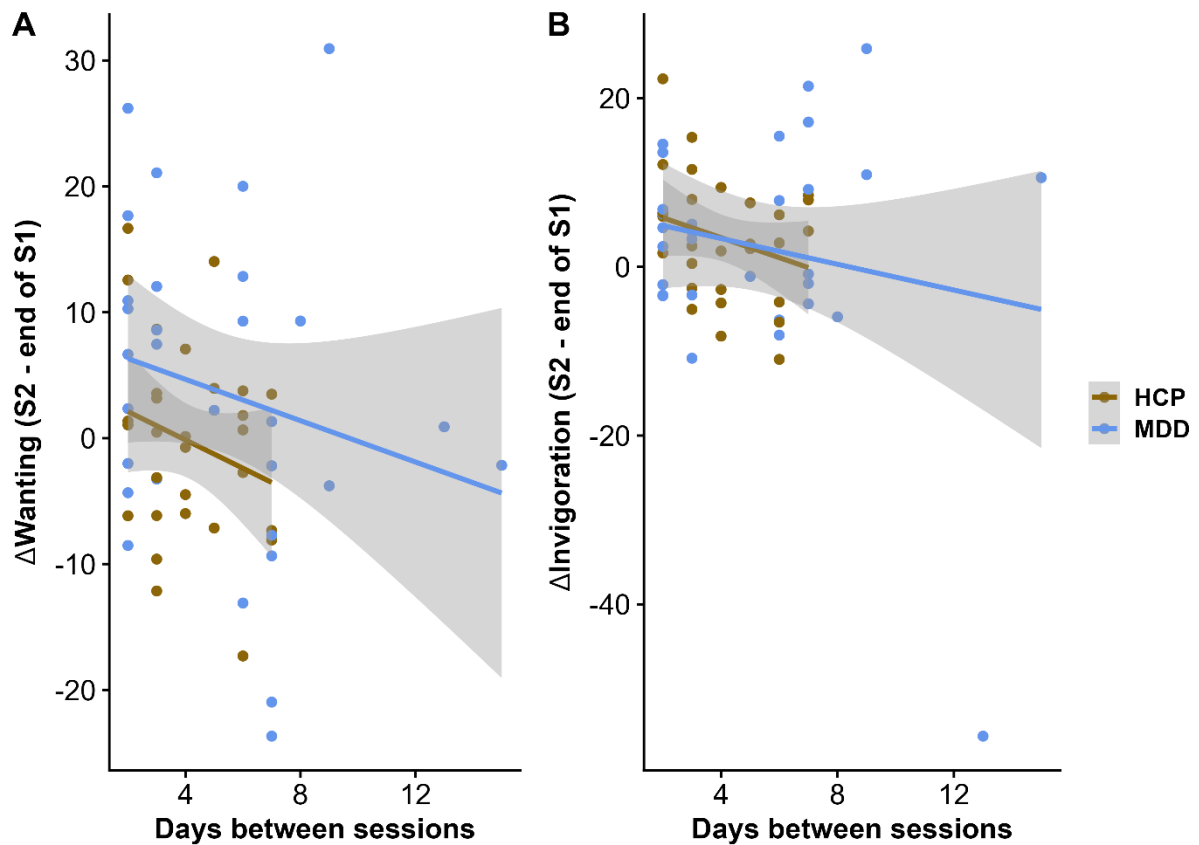


Figure S3: Carry over effects between session for wanting and invigoration depend on the number of days between session with stronger losses if sessions are further apart. A) Differences in wanting between the end of session 1 and session 2 are numerically more negative (i.e., any gains during session 1 are lost again) the further apart the sessions were completed ($b = -2.6$, $t(55) = -1.48$, $p = 0.15$). B) Differences in invigoration between the end of session 1 and session 2 are numerically more negative (i.e., any gains during session 1 are lost again) the further apart the sessions were completed ($b = -2.6$, $t(55) = -1.37$, $p = 0.17$).

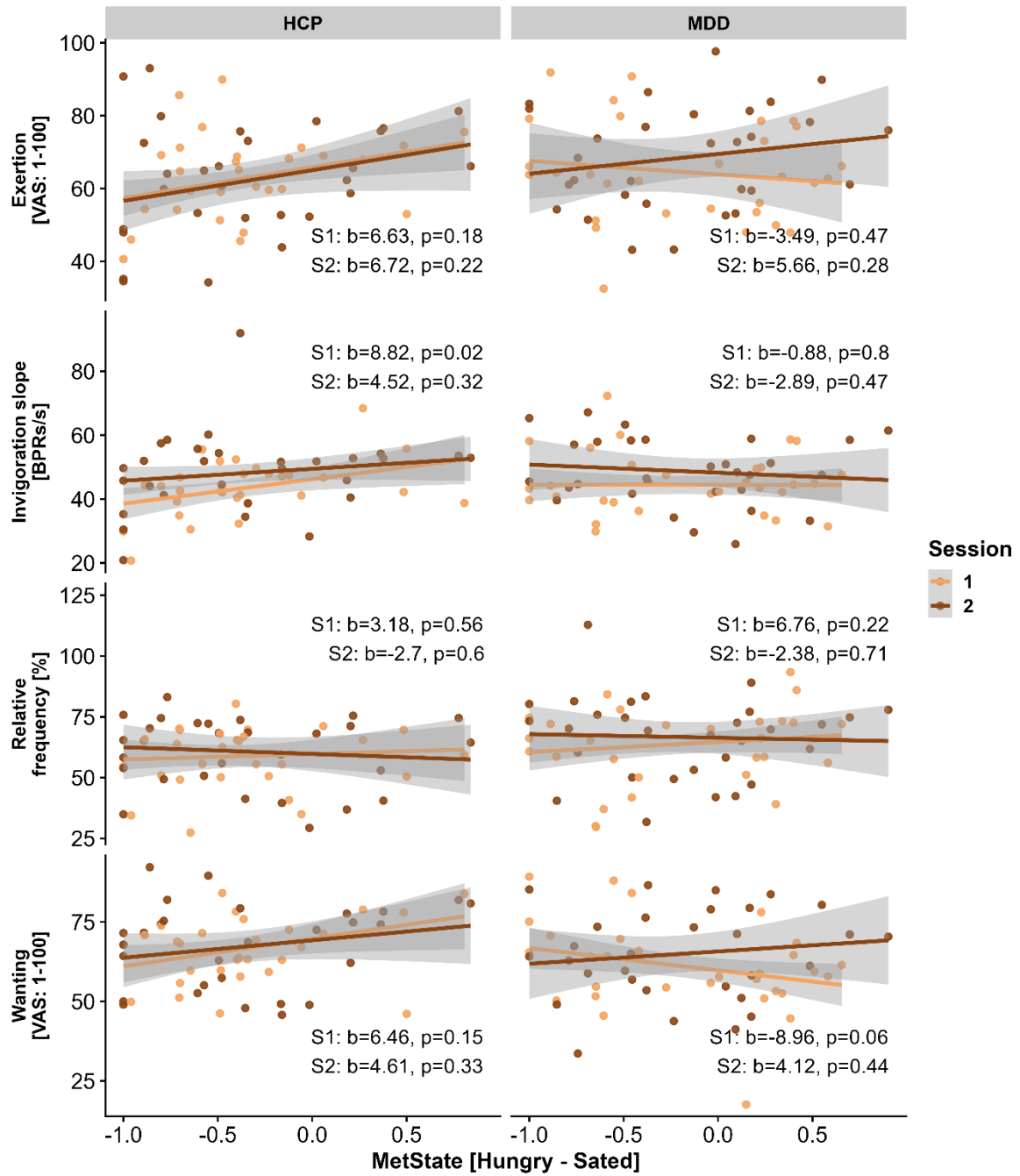


Figure S4: In healthy participants, motivation depends on the current metabolic state (Hungry – Sated) in session 1.

Tables

<i>Predictors</i>	Invigoration Slope			Invigoration Slope			Invigoration Slope		
	<i>Estimates</i>	<i>p</i>	<i>df</i>	<i>Estimates</i>	<i>p</i>	<i>df</i>	<i>Estimates</i>	<i>p</i>	<i>df</i>
(Intercept)	34.6	<0.001	49.0	35.5	<0.001	37.4	35.6	<0.001	37.1
Stim [taVNS]	5.6	0.044	56.7	5.7	0.042	56.3	5.6	0.046	55.1
RewMag [High]	8.4	0.003	29.3	8.4	0.003	29.4	8.4	0.003	29.3
Diff [Hard]	0.5	0.728	39.1	0.5	0.728	39.2	0.5	0.727	39.1
Money [Money]	4.7	0.001	58.0	4.7	0.001	58.0	4.7	0.001	58.0
Stim [taVNS] × RewMag [High]	-2.4	0.400	46.6	-2.4	0.400	46.7	-2.4	0.400	46.7
Stim [taVNS] × Diff [Hard]	1.0	0.648	94.4	1.0	0.648	94.2	1.0	0.644	92.8
RewMag [High] × Diff [Hard]	-1.5	0.541	29.2	-1.5	0.541	29.1	-1.5	0.541	29.3
Stim [taVNS] × RewMag [High] × Diff [Hard]	-0.6	0.853	65.4	-0.6	0.853	65.2	-0.6	0.853	62.6
Group [MDD]	1.9	0.327	47.5						
BDI				1.5	0.111	44.2			
SHAPS							2.1	0.027	47.0

Table S3: Invigoration slope does not differ between participants with major depressive disorder (MDD) and healthy control participants (HCP) in session 1. Results from a linear mixed effects model. BDI = Beck's Depression Inventory. SHAPS = Snaith Hamilton pleasure scale

<i>Predictors</i>	Invigoration Slope			Invigoration Slope			Invigoration Slope		
	<i>Estimates</i>	<i>p</i>	<i>df</i>	<i>Estimates</i>	<i>p</i>	<i>df</i>	<i>Estimates</i>	<i>p</i>	<i>df</i>
(Intercept)	43.2	<0.001	41.4	44.3	<0.001	31.5	44.2	<0.001	31.3
Stim [taVNS]	-6.2	0.067	54.6	-6.5	0.060	53.7	-6.2	0.067	55.2
RewMag [High]	7.7	<0.001	29.5	7.7	<0.001	29.3	7.7	<0.001	29.8
Diff [Hard]	1.7	0.328	46.9	1.7	0.327	46.5	1.7	0.324	46.7
Money [Money]	5.8	<0.001	58.1	5.8	<0.001	58.1	5.8	<0.001	58.1
Stim [taVNS] × RewMag [High]	1.3	0.713	50.5	1.3	0.713	50.4	1.3	0.713	50.6
Stim [taVNS] × Diff [Hard]	-2.4	0.295	107.5	-2.4	0.294	107.1	-2.4	0.293	108.0
RewMag [High] × Diff [Hard]	-0.7	0.747	30.9	-0.7	0.746	30.1	-0.7	0.747	31.9
Stim [taVNS] × RewMag [High] × Diff [Hard]	1.7	0.583	80.3	1.7	0.584	79.2	1.7	0.583	82.0
Group [MDD]	1.8	0.487	52.1						
BDI				2.3	0.080	48.2			
SHAPS							1.5	0.272	52.1

Table S4: Invigoration slope does not differ between participants with major depressive disorder (MDD) and healthy control participants (HCP) in session 2. Results from a linear mixed effects model. BDI = Beck's Depression Inventory. SHAPS = Snaith Hamilton pleasure scale.

<i>Predictors</i>	Effort maintenance			Effort maintenance			Effort maintenance		
	<i>Estimates</i>	<i>p</i>	<i>df</i>	<i>Estimates</i>	<i>p</i>	<i>df</i>	<i>Estimates</i>	<i>p</i>	<i>df</i>
(Intercept)	52.6	<0.001	49.7	54.1	<0.001	38.3	54.2	<0.001	38.3
Stim [taVNS]	3.0	0.469	56.5	3.1	0.453	56.2	2.8	0.495	56.2
RewMag [High]	11.8	0.001	30.5	11.8	0.001	30.5	11.8	0.001	30.5
Diff [Hard]	-10.3	<0.001	29.2	-10.3	<0.001	29.3	-10.3	<0.001	29.2
Money [Money]	7.7	<0.001	58.0	7.7	<0.001	58.0	7.7	<0.001	58.0
Stim [taVNS] × RewMag [High]	-4.2	0.217	43.6	-4.2	0.217	43.5	-4.2	0.217	43.5
Stim [taVNS] × Diff [Hard]	1.4	0.675	55.5	1.4	0.675	55.5	1.4	0.675	55.5
RewMag [High] × Diff [Hard]	2.8	0.032	91.8	2.8	0.033	87.2	2.8	0.031	94.2
Stim [taVNS] × RewMag [High] × Diff [Hard]	1.8	0.435	53.2	1.8	0.436	53.3	1.8	0.435	53.1
Group [MDD]	3.1	0.326	51.8						
BDI				2.0	0.207	48.7			
SHAPS							0.1	0.951	53.9

Table S7: Effort maintenance (RelEffort) does not differ between participants with major depressive disorder (MDD) compared to healthy control participants (HCP) in session 1. Results from a linear mixed-effects model. BDI = Beck's Depression Inventory. SHAPS = Snaith Hamilton pleasure scale

<i>Predictors</i>	Effort maintenance			Effort maintenance			Effort maintenance		
	<i>Estimates</i>	<i>p</i>	<i>df</i>	<i>Estimates</i>	<i>p</i>	<i>df</i>	<i>Estimates</i>	<i>p</i>	<i>df</i>
(Intercept)	56.2	<0.001	39.8	58.6	<0.001	32.7	58.4	<0.001	32.6
Stim [taVNS]	-1.1	0.820	56.2	-1.3	0.783	56.0	-0.9	0.853	55.8
RewMag [High]	9.1	0.001	28.0	9.1	0.001	28.0	9.1	0.001	28.1
Diff [Hard]	-6.9	0.006	28.5	-6.9	0.006	28.5	-6.9	0.006	28.5
Money [Money]	7.9	<0.001	58.0	7.9	<0.001	58.0	7.9	<0.001	58.0
Stim [taVNS] × RewMag [High]	3.1	0.449	54.7	3.1	0.449	54.7	3.1	0.449	54.7
Stim [taVNS] × Diff [Hard]	-5.8	0.095	56.7	-5.8	0.095	56.7	-5.8	0.095	56.7
RewMag [High] × Diff [Hard]	4.0	0.029	28.4	4.0	0.029	28.4	4.0	0.029	28.4
Stim [taVNS] × RewMag [High] × Diff [Hard]	1.2	0.595	54.5	1.2	0.595	54.5	1.2	0.595	54.5
Group [MDD]	4.5	0.145	44.5						
BDI				3.1	0.039	41.6			
SHAPS							1.3	0.398	45.4

Table S8: Effort maintenance (RelEffort) does not differ between participants with major depressive disorder (MDD) compared to healthy control participants (HCP) in session 2. Results from a linear mixed-effects model. BDI = Beck's Depression Inventory. SHAPS = Snaith Hamilton pleasure scale

<i>Predictors</i>	Wanting			Wanting			Wanting		
	<i>Estimates</i>	<i>p</i>	<i>df</i>	<i>Estimates</i>	<i>p</i>	<i>df</i>	<i>Estimates</i>	<i>p</i>	<i>df</i>
(Intercept)	50.8	<0.001	44.1	47.1	<0.001	34.3	47.0	<0.001	34.2
Stim [taVNS]	3.9	0.358	51.5	4.1	0.344	50.8	4.2	0.330	52.2
RewMag [High]	22.0	<0.001	31.6	22.0	<0.001	31.6	22.0	<0.001	31.6
Diff [Hard]	-10.1	<0.001	28.9	-10.1	<0.001	29.1	-10.1	<0.001	29.0
Money [Money]	15.9	<0.001	58.0	15.9	<0.001	58.0	15.9	<0.001	58.0
Stim [taVNS] × RewMag [High]	-5.9	0.172	47.8	-5.9	0.172	47.8	-5.9	0.172	47.8
Stim [taVNS] × Diff [Hard]	3.6	0.256	51.0	3.6	0.255	51.2	3.6	0.256	51.1
RewMag [High] × Diff [Hard]	4.6	0.048	29.2	4.6	0.048	29.3	4.6	0.048	29.2
Stim [taVNS] × RewMag [High] × Diff [Hard]	0.5	0.863	61.4	0.5	0.863	61.7	0.5	0.863	61.5
Group [MDD]	-7.1	0.017	55.4						
BDI				-1.3	0.402	55.4			
SHAPS							-2.1	0.174	56.0

Table S5: Wanting is lower in participants with major depressive disorder (MDD) compared to healthy control participants (HCP) in session 1. Results from a linear mixed effects model. BDI = Beck's Depression Inventory. SHAPS = Snaith Hamilton pleasure scale

<i>Predictors</i>	Wanting			Wanting			Wanting		
	<i>Estimates</i>	<i>p</i>	<i>df</i>	<i>Estimates</i>	<i>p</i>	<i>df</i>	<i>Estimates</i>	<i>p</i>	<i>df</i>
(Intercept)	53.8	<0.001	43.6	52.7	<0.001	35.1	52.6	<0.001	35.1
Stim [taVNS]	-6.2	0.182	54.3	-6.5	0.171	55.2	-6.4	0.175	55.0
RewMag [High]	20.1	<0.001	28.9	20.1	<0.001	28.9	20.1	<0.001	28.9
Diff [Hard]	-5.0	0.001	29.0	-5.0	0.001	28.9	-5.0	0.001	29.0
Money [Money]	14.7	<0.001	58.0	14.7	<0.001	58.0	14.7	<0.001	58.0
Stim [taVNS] × RewMag [High]	6.9	0.116	56.0	6.8	0.116	56.1	6.9	0.116	56.0
Stim [taVNS] × Diff [Hard]	-3.4	0.128	57.9	-3.4	0.128	57.9	-3.4	0.128	57.9
RewMag [High] × Diff [Hard]	2.6	0.116	56.2	2.6	0.117	55.7	2.6	0.116	56.0
Stim [taVNS] × RewMag [High] × Diff [Hard]	1.4	0.530	116.7	1.4	0.530	116.5	1.4	0.530	116.6
Group [MDD]	-2.4	0.415	55.5						
BDI				0.4	0.801	55.4			
SHAPS							-0.9	0.543	56.4

Table S6: Wanting does not differ between participants with major depressive disorder (MDD) compared to healthy control participants (HCP) in session 2. Results from a linear mixed effects model. BDI = Beck's Depression Inventory. SHAPS = Snaith Hamilton pleasure scale

<i>Predictors</i>	Exertion [Group]			Exertion [BDI]			Exertion [SHAPS]		
	<i>Estimates</i>	<i>p</i>	<i>df</i>	<i>Estimates</i>	<i>p</i>	<i>df</i>	<i>Estimates</i>	<i>p</i>	<i>df</i>
(Intercept)	54.6	<0.001	42.5	55.1	<0.001	34.6	55.0	<0.001	34.2
Stim [taVNS]	0.2	0.961	45.5	0.2	0.970	45.5	0.2	0.956	44.5
RewMag [High]	17.8	<0.001	29.2	17.8	<0.001	29.2	17.8	<0.001	29.1
Diff [Hard]	-12.1	<0.001	29.3	-12.1	<0.001	29.3	-12.1	<0.001	29.3
Money [Money]	10.7	<0.001	58.0	10.7	<0.001	58.0	10.7	<0.001	57.9
Stim [taVNS] × RewMag [High]	-6.2	0.175	45.2	-6.2	0.175	45.2	-6.2	0.175	45.1
Stim [taVNS] × Diff [Hard]	1.9	0.628	56.4	1.9	0.628	56.4	1.9	0.628	56.4
RewMag [High] × Diff [Hard]	5.7	0.059	29.1	5.7	0.059	29.1	5.7	0.059	29.1
Stim [taVNS] × RewMag [High] × Diff [Hard]	0.9	0.813	56.2	0.9	0.813	56.2	0.9	0.813	56.1
Group [MDD]	0.9	0.755	55.6						
BDI				0.0	0.999	55.9			
SHAPS							1.5	0.286	53.4

Table S7: Self-rated exertion does not differ between participants with major depressive disorder (MDD) compared to healthy control participants (HCP) in session 1. Results from a linear mixed-effects model. BDI = Beck's Depression Inventory. SHAPS = Snaith Hamilton pleasure scale

<i>Predictors</i>	Exertion [Group]			Exertion [BDI]			Exertion [SHAPS]		
	<i>Estimates</i>	<i>p</i>	<i>df</i>	<i>Estimates</i>	<i>p</i>	<i>df</i>	<i>Estimates</i>	<i>p</i>	<i>df</i>
(Intercept)	53.0	<0.001	43.0	54.3	<0.001	35.1	54.2	<0.001	34.2
Stim [taVNS]	1.0	0.833	55.9	0.8	0.854	56.2	1.0	0.828	55.9
RewMag [High]	14.6	<0.001	28.1	14.6	<0.001	28.2	14.6	<0.001	28.2
Diff [Hard]	-5.1	0.027	28.0	-5.1	0.027	28.0	-5.1	0.027	28.0
Money [Money]	11.0	<0.001	58.0	11.0	<0.001	58.0	11.0	<0.001	58.0
Stim [taVNS] × RewMag [High]	6.1	0.207	52.6	6.1	0.207	52.6	6.1	0.207	52.6
Stim [taVNS] × Diff [Hard]	-7.5	0.056	51.5	-7.5	0.056	51.5	-7.5	0.056	51.5
RewMag [High] × Diff [Hard]	3.0	0.161	28.0	3.0	0.161	28.5	3.0	0.161	28.2
Stim [taVNS] × RewMag [High] × Diff [Hard]	2.9	0.319	56.8	2.9	0.319	57.5	2.9	0.319	57.1
Group [MDD]	2.4	0.410	54.4						
BDI				1.6	0.255	53.5			
SHAPS							1.9	0.202	55.9

Table S8: Self-rated exertion does not differ between participants with major depressive disorder (MDD) compared to healthy control participants (HCP) in session 2. Results from a linear mixed-effects model. BDI = Beck's Depression Inventory. SHAPS = Snaith Hamilton pleasure scale

<i>Predictors</i>	Invigoration [Group]			Invigoration[BDI]			Invigoration [SHAPS]		
	<i>Estimates</i>	<i>p</i>	<i>df</i>	<i>Estimates</i>	<i>p</i>	<i>df</i>	<i>Estimates</i>	<i>p</i>	<i>df</i>
(Intercept)	34.5	<0.001	103.2	34.0	<0.001	101.7	34.0	<0.001	100.5
Stim [taVNS]	0.0	0.989	64.8	-0.2	0.884	64.7	-0.2	0.884	64.8
RewMag [High]	6.2	0.008	59.5	8.1	<0.001	59.0	8.1	<0.001	58.8
Diff [Hard]	1.7	0.319	80.0	1.1	0.353	78.0	1.1	0.352	80.5
Session	4.0	<0.001	58.4	3.9	<0.001	58.8	3.8	<0.001	60.7
Money [Money]	5.2	<0.001	58.0	5.2	<0.001	58.0	5.2	<0.001	58.0
Stim [taVNS] × RewMag[High]	-2.0	0.356	95.0	-0.6	0.702	92.7	-0.6	0.705	93.0
Stim [taVNS] × Diff [Hard]	-2.4	0.246	168.9	-0.7	0.617	142.5	-0.7	0.616	146.5
RewMag [High] × Diff [Hard]	-0.5	0.836	68.2	-1.1	0.515	68.9	-1.1	0.522	67.7
Stim [taVNS] × RewMag [High] × Diff [Hard]	1.5	0.601	259.1	0.7	0.711	233.0	0.7	0.714	200.3
Group [MDD]	-1.3	0.673	57.3						
Stim [taVNS] × MDD	-0.4	0.871	64.9						
RewMag [High] × MDD	3.7	0.252	59.0						
Diff [Hard] × MDD	-1.1	0.625	80.0						
taVNS × RewMag [High] × MDD	2.8	0.357	94.8						
taVNS × Diff [Hard] × MDD	3.3	0.254	174.6						
RewMag [High] × Diff [Hard] × MDD	-1.2	0.736	68.2						
taVNS×RewMag [High] × Diff [Hard]) ×Group [MDD]	-1.5	0.713	264.6						
BDI				-0.2	0.908	57.3			
Stim [taVNS] × BDI				-0.5	0.739	64.8			

<i>Predictors</i>	Invigoration [Group]			Invigoration[BDI]			Invigoration [SHAPS]		
	<i>Estimates</i>	<i>p</i>	<i>df</i>	<i>Estimates</i>	<i>p</i>	<i>df</i>	<i>Estimates</i>	<i>p</i>	<i>df</i>
RewMag [High] × BDI				2.8	0.080	59.1			
Diff [Hard] × BDI				0.5	0.653	79.2			
taVNS × RewMag [High] × BDI				1.2	0.427	93.5			
taVNS × Diff [Hard] × BDI				0.6	0.705	164.8			
RewMag [High] × Diff [Hard] × BDI				-2.5	0.131	68.8			
taVNS × RewMag [High] × Diff [Hard] × BDI				-0.7	0.734	253.1			
SHAPS							-0.6	0.673	57.4
Stim [taVNS] × SHAPS							0.9	0.519	64.8
RewMag [High] × SHAPS							1.2	0.443	58.9
Diff [Hard] × SHAPS							1.1	0.353	82.0
taVNS × RewMag [High] × SHAPS							2.0	0.209	94.0
taVNS × Diff [Hard] × SHAPS							1.3	0.388	169.5
RewMag [High] × Diff [Hard] × SHAPS							-1.1	0.516	67.7
taVNS × RewMag [High] × Diff [Hard] × SHAPS							-1.9	0.342	212.8

Table S9: Invigoration slope is not altered by transcutaneous vagus nerve stimulation (taVNS) across both sessions and independent of group. Results from a linear mixed effects models. BDI = Beck's Depression Inventory. SHAPS = Snaith Hamilton pleasure scale

<i>Predictors</i>	Effort maintenance [Group]			Effort maintenance [SHAPS]			Effort maintenance [BDI]		
	<i>Estimates</i>	<i>p</i>	<i>df</i>	<i>Estimates</i>	<i>p</i>	<i>df</i>	<i>Estimates</i>	<i>p</i>	<i>df</i>
(Intercept)	49.4	<0.001	79.4	58.9	<0.001	59.7	60.0	<0.001	59.8
Stim [taVNS]	1.3	0.598	56.8	0.8	0.647	56.8	0.8	0.648	56.8
RewMag High]	9.5	0.002	58.1	10.6	<0.001	57.2	10.6	<0.001	57.2
Diff [Hard]	-9.2	<0.001	57.4	-8.7	<0.001	57.0	-8.7	<0.001	57.1
Session	3.6	<0.001	62.3	3.7	<0.001	60.0	3.6	<0.001	60.4
Money [Money]	7.8	<0.001	58.0	7.8	<0.001	58.1	7.8	<0.001	58.0
Stim [taVNS] × RewMag [High]	-1.2	0.636	58.3	-0.5	0.757	58.3	-0.5	0.757	58.3
Stim [taVNS] × Diff [Hard]	-2.1	0.237	57.3	-2.1	0.104	57.3	-2.1	0.104	57.3
RewMag [High] × Diff [Hard]	3.5	0.026	65.9	3.4	0.003	66.0	3.4	0.003	66.0
Stim [taVNS] × RewMag [High] × Diff [Hard]	-0.3	0.889	74.5	1.5	0.332	73.1	1.5	0.331	73.4
Group [MDD]	3.0	0.519	57.0						
Stim [taVNS] × Group [MDD]	-1.0	0.770	56.8						
RewMag [High] × Group [MDD]	2.3	0.572	57.1						
Diff [Hard] × Group [MDD]	1.0	0.749	57.0						
Stim [taVNS] × RewMag [High] × Group [MDD]	1.2	0.719	58.3						
Stim [taVNS] × Diff [Hard] × Group [MDD]	0.1	0.959	57.3						
RewMag [High] × Diff [Hard] × Group [MDD]	-0.2	0.917	65.8						
Stim [taVNS] × RewMag [High] × Diff [Hard] × Group [MDD]	3.5	0.248	74.3						
SHAPS				-0.9	0.675	53.7			

Stim [taVNS] × SHAPS	1.4	0.408	56.8	
RewMag [High] × SHAPS	0.5	0.805	57.2	
Diff [Hard] × SHAPS	-0.5	0.763	57.0	
Stim [taVNS] × RewMag [High] × SHAPS	-0.3	0.884	58.3	
Stim [taVNS] × Diff [Hard] × SHAPS	0.4	0.774	57.3	
RewMag [High] × Diff [Hard] × SHAPS	-0.3	0.784	66.0	
Stim [taVNS] × RewMag [High] × Diff [Hard] × SHAPS	0.9	0.528	73.5	
<hr/>				
BDI		1.1	0.616	55.8
Stim [taVNS] × BDI		-0.9	0.602	56.9
RewMag [High] × BDI		0.5	0.790	57.1
Diff [Hard] × BDI		1.4	0.396	57.0
Stim [taVNS] × RewMag [High] × BDI		1.0	0.561	58.3
Stim [taVNS] × Diff [Hard] × BDI		-0.0	0.969	57.3
RewMag [High] × Diff [Hard] × BDI		-0.1	0.924	66.0
Stim [taVNS] × RewMag [High] × Diff [Hard] × BDI		1.3	0.397	73.8

Table S10: Effort maintenance is not altered by transcutaneous vagus nerve stimulation (taVNS) across both sessions and independent of group. Results from a linear mixed effects models. BDI = Beck's Depression Inventory. SHAPS = Snaith Hamilton pleasure scale

<i>Predictors</i>	Wanting [Group]			Wanting [BDI]			Wanting [SHAPS]		
	<i>Estimates</i>	<i>p</i>	<i>df</i>	<i>Estimates</i>	<i>p</i>	<i>df</i>	<i>Estimates</i>	<i>p</i>	<i>df</i>
(Intercept)	49.4	<0.001	89.1	45.2	<0.001	87.2	45.3	<0.001	87.8
Stim [taVNS]	-0.3	0.910	55.6	-1.3	0.466	54.3	-1.3	0.465	54.5
RewMag [High]	17.6	<0.001	60.3	21.0	<0.001	57.2	21.0	<0.001	57.4
Diff [Hard]	-7.8	0.001	57.7	-7.6	<0.001	57.9	-7.6	<0.001	57.8
Session	3.1	0.003	56.2	3.2	0.003	56.2	3.2	0.003	56.2
Money [Money]	15.3	<0.001	58.0	15.3	<0.001	58.0	15.3	<0.001	58.0
Stim [taVNS] × RewMag [High]	-0.8	0.777	60.2	0.1	0.960	59.1	0.1	0.960	59.1
Stim [taVNS] × Diff [Hard]	1.0	0.567	86.4	0.3	0.831	115.9	0.3	0.833	85.3
RewMag [High] × Diff [Hard]	4.2	0.031	79.8	3.7	0.007	81.3	3.7	0.008	80.6
Stim [taVNS] × RewMag [High] × Diff [Hard]	0.4	0.865	179.8	0.8	0.612	208.1	0.8	0.617	166.2
Group [MDD]	-8.0	0.087	57.0						
Diff [Hard] × Group [MDD]	0.4	0.908	57.7						
taVNS × MDD	-2.0	0.567	54.8						
RewMag [High] × MDD	6.8	0.131	57.3						
taVNS × RewMag [High] × MDD]	1.8	0.652	59.2						
taVNS × Diff [Hard] × MDD	-1.5	0.549	86.1						
RewMag [High] × Diff [Hard] × MDD	-1.1	0.684	79.7						
taVNS× RewMag [High] × Diff [Hard]) × MDD	0.8	0.797	183.0						
BDI				-2.8	0.239	57.0			

<i>Predictors</i>	Wanting [Group]			Wanting [BDI]			Wanting [SHAPS]		
	<i>Estimates</i>	<i>p</i>	<i>df</i>	<i>Estimates</i>	<i>p</i>	<i>df</i>	<i>Estimates</i>	<i>p</i>	<i>df</i>
taVNS × BDI				-0.1	0.975	54.8			
RewMag [High] × BDI				4.1	0.068	57.3			
Diff [Hard] × BDI				1.8	0.246	57.9			
taVNS × RewMag [High] × BDI				-0.8	0.675	59.3			
taVNS × Diff [Hard] × BDI				-2.1	0.080	118.8			
RewMag [High] × Diff [Hard] × BDI				-1.8	0.171	81.7			
taVNS × RewMag[High] × Diff [Hard] × BDI				2.5	0.114	232.8			
SHAPS							-3.4	0.150	57.0
taVNS × SHAPS							0.0	0.985	54.7
RewMag [High] × SHAPS							3.5	0.121	57.3
Diff [Hard] × SHAPS							2.0	0.183	57.8
taVNS × RewMag [High] × SHAPS							-1.2	0.559	59.2
taVNS × Diff [Hard] × SHAPS							-1.4	0.250	86.7
RewMag [High] × Diff [Hard] × SHAPS							-1.6	0.240	81.1
taVNS × RewMag [High] × Diff [Hard] × SHAPS							0.7	0.663	185.9

Table S11: Wanting is not altered by transcutaneous vagus nerve stimulation (taVNS) across both sessions and independent of group. Results from a linear mixed effects models. BDI = Beck's Depression Inventory. SHAPS = Snaith Hamilton pleasure scale