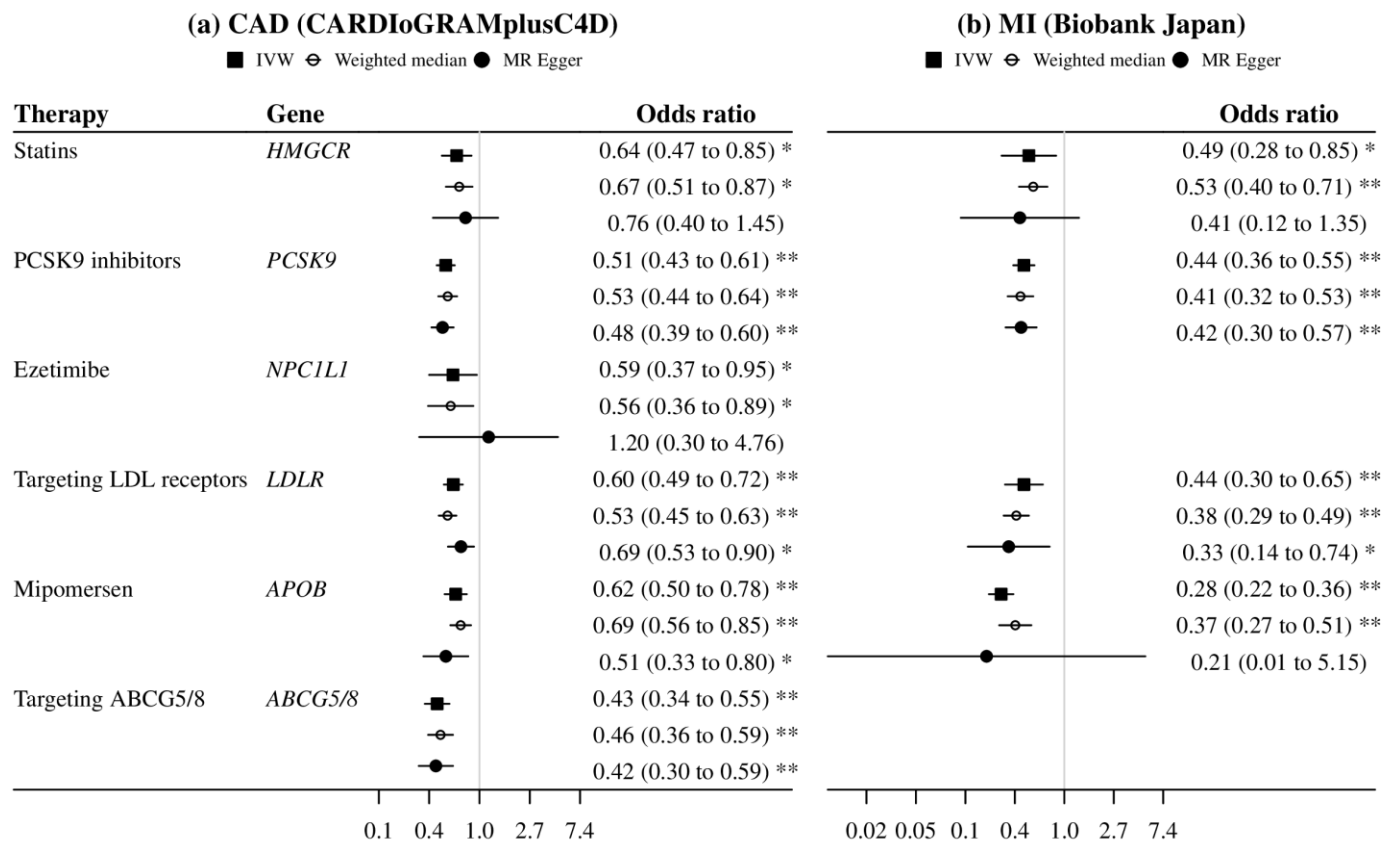


Supplemental Figure 1. Flowchart of the study design.

CAD, coronary artery disease; CARDIoGRAMplusC4D, Coronary ARtery DIsease Genome wide Replication and Meta-analysis plus The Coronary Artery Disease Genetics; eQTL, expression quantitative trait locus; GLGC, Global Lipids Genetics Consortium; LDL, low-density lipoprotein; MI, myocardial infarction; MR, Mendelian randomization.

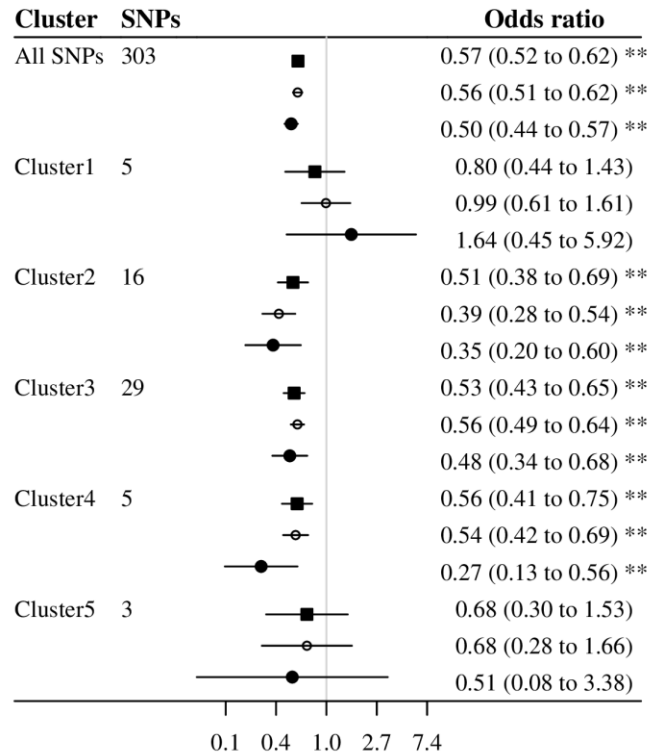


Supplemental Figure 2. Mendelian randomization estimates for genetic mimics of plasma LDL-cholesterol lowering therapies on risk of CAD and MI.

ABCG5/8, adenosine triphosphate (ATP)-binding cassette transporters G5/8; CAD, coronary artery disease; CARDIoGRAMplusC4D, Coronary ARtery Disease Genome wide Replication and Meta-analysis plus The Coronary Artery Disease Genetics; IVW, inverse variance weighted; LDL, low-density lipoprotein; MI, myocardial infarction; PCSK9, proprotein convertase subtilisin/kexin type 9. Estimates are expressed in odds ratio per 1-standard deviation (around 0.87 mmol/L) reduction in plasma LDL-cholesterol. * denotes p value <0.05 ; ** denotes p value <0.001 .

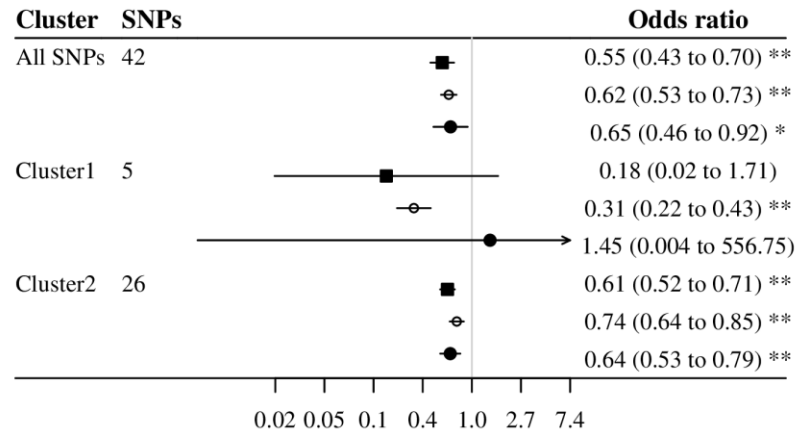
(a) CAD (CARDIoGRAMplusC4D)

■ IVW ◊ Weighted median ● MR Egger



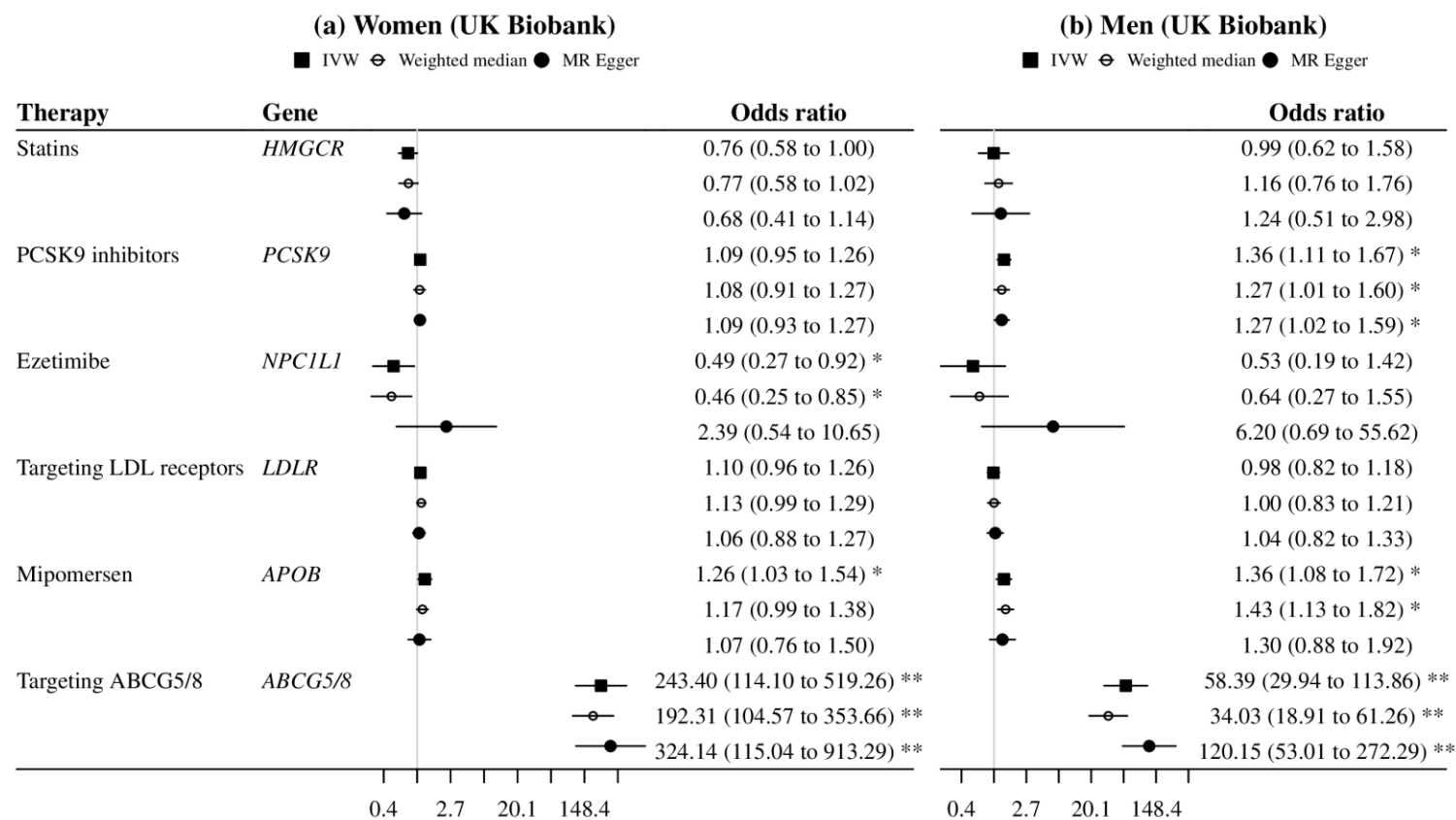
(b) MI (Biobank Japan)

■ IVW ◊ Weighted median ● MR Egger



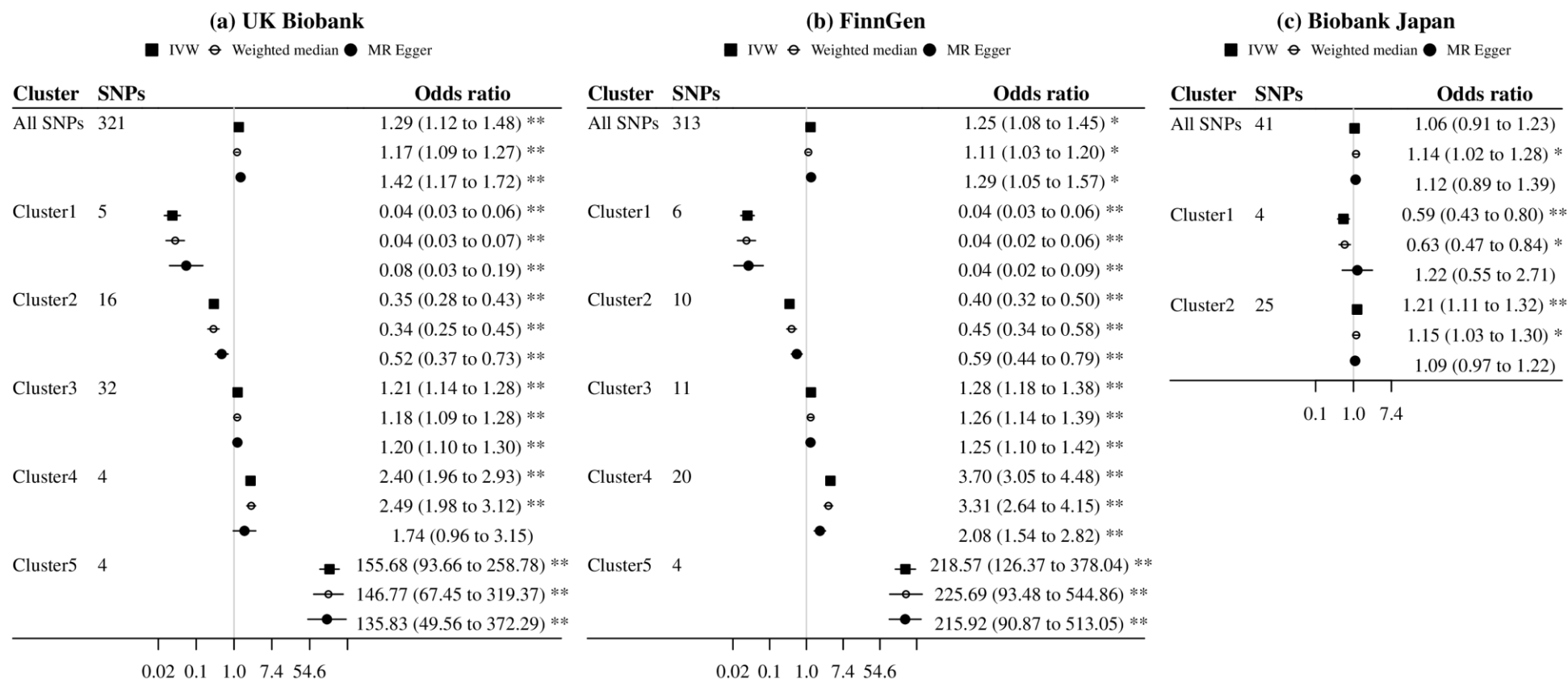
Supplemental Figure 3. Mendelian randomization estimates for genetically predicted lower LDL-cholesterol on risk of CAD and MI using all SNPs and cluster-specific SNPs (inclusion probability >0.80).

CAD, coronary artery disease; CARDIoGRAMplusC4D, Coronary ARtery DIsease Genome wide Replication and Meta-analysis plus The Coronary Artery Disease Genetics; IVW, inverse variance weighted; LDL, low-density lipoprotein; MI, myocardial infarction. Estimates are expressed in odds ratio per 1-standard deviation (around 0.87 mmol/L) reduction in plasma LDL-cholesterol. * denotes p value <0.05; ** denotes p value <0.001.



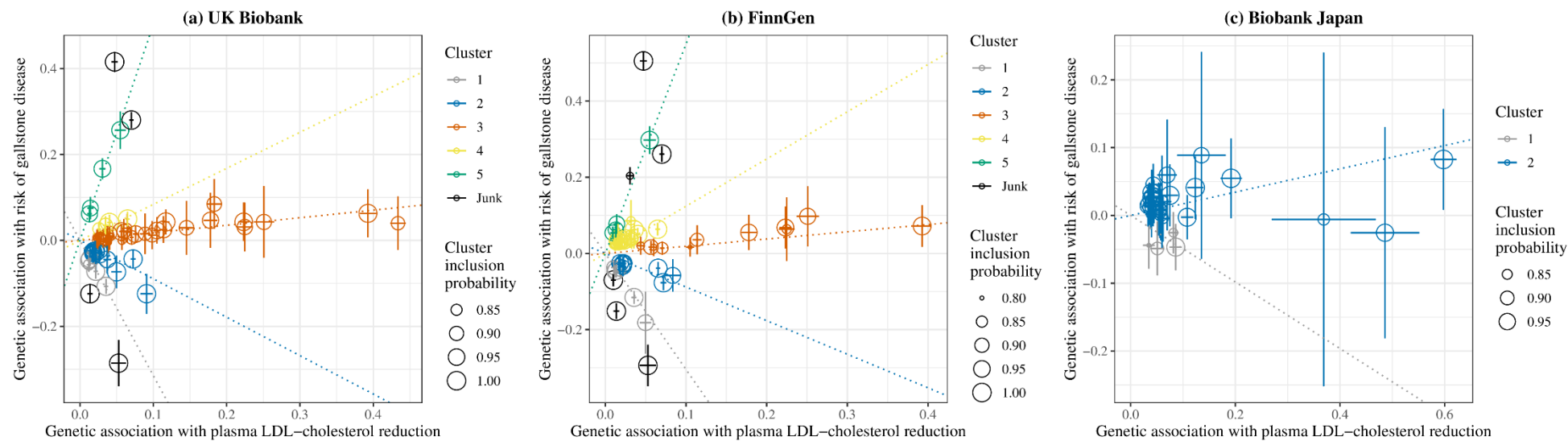
Supplemental Figure 4. Sex-specific Mendelian randomization estimates for genetic mimics of plasma LDL-cholesterol lowering therapies on risk of gallstone disease in the UK Biobank.

ABCG5/8, adenosine triphosphate (ATP)-binding cassette transporters G5/8; IVW, inverse variance weighted; LDL, low-density lipoprotein; PCSK9, proprotein convertase subtilisin/kexin type 9. Estimates are expressed in odds ratio per 1-standard deviation (around 0.87 mmol/L) reduction in plasma LDL-cholesterol. * denotes p value <0.05 ; ** denotes p value <0.001 .



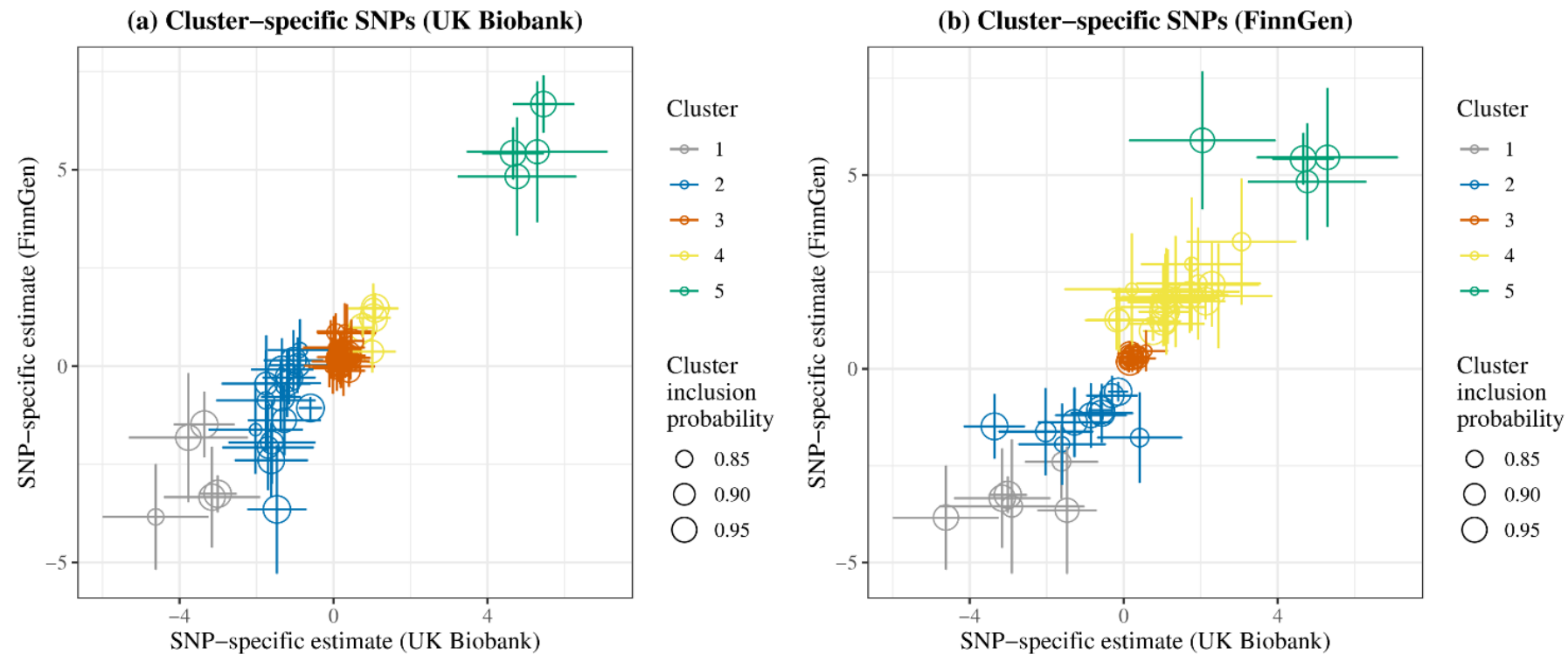
Supplemental Figure 5. Mendelian randomization estimates for genetically predicted lower LDL-cholesterol on risk of gallstone disease using all SNPs and cluster-specific SNPs (inclusion probability >0.80) in sensitivity analysis excluding SNPs associated with common confounders.

IVW, inverse variance weighted; LDL, low-density lipoprotein. The SNPs excluded for UK Biobank and FinnGen were rs11499828, rs174547 and rs3184504; the SNP excluded for Biobank Japan was rs4646776. Estimates are expressed in odds ratio per 1-standard deviation (around 0.87 mmol/L) reduction in plasma LDL-cholesterol. * denotes p value <0.05; ** denotes p value <0.001.



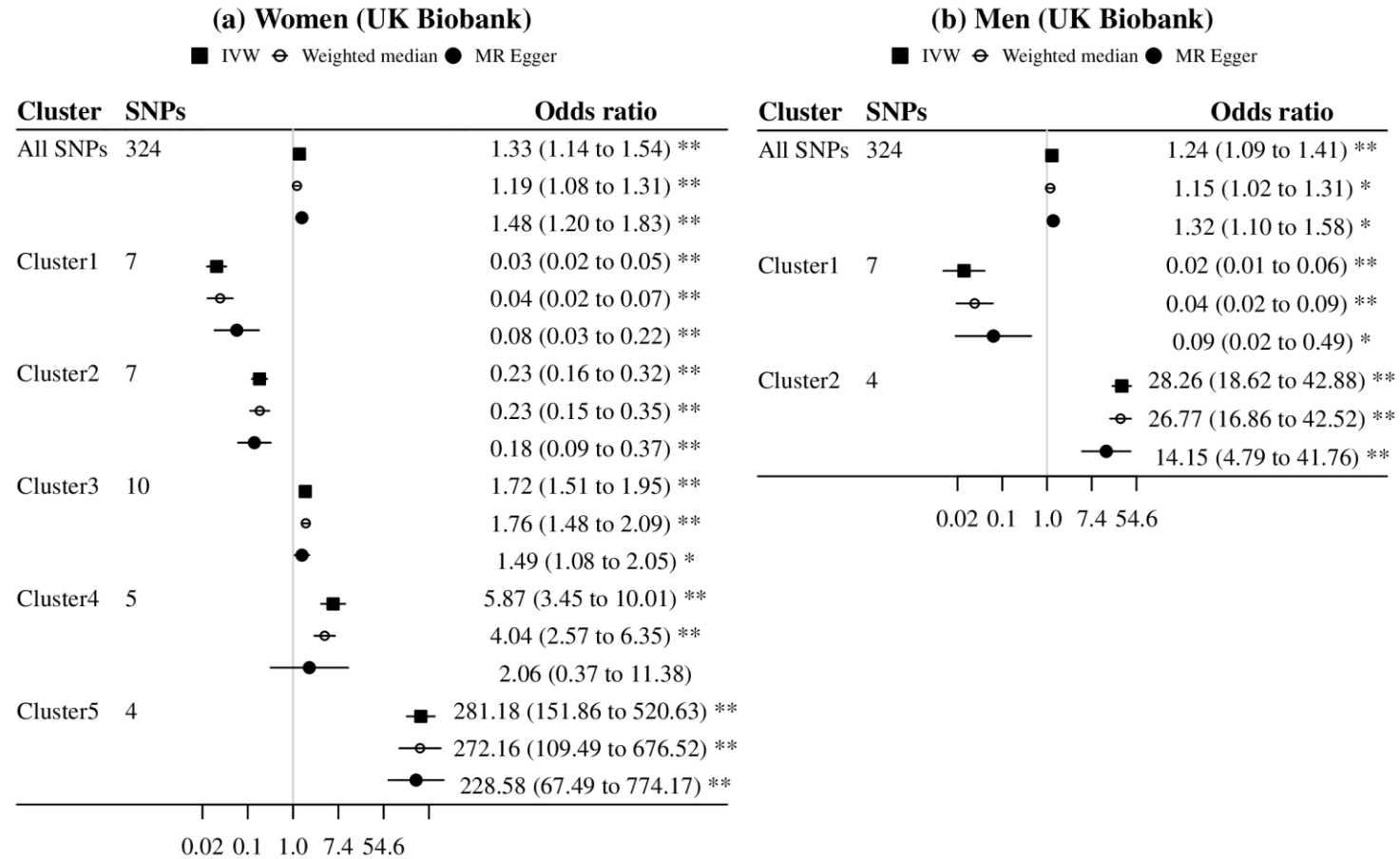
Supplemental Figure 6. Genetic associations with plasma LDL-cholesterol reduction (standard deviation) and risk of gallstone disease (log odds) for SNPs with inclusion probability >0.80 in clustered Mendelian randomization analyses excluding SNPs associated with common confounders.

LDL, low-density lipoprotein. The SNPs excluded for UK Biobank and FinnGen were rs11499828, rs174547 and rs3184504; the SNP excluded for Biobank Japan was rs4646776. Points represent SNPs; dotted lines are cluster means; error bars are 95% confidence intervals for genetic associations.



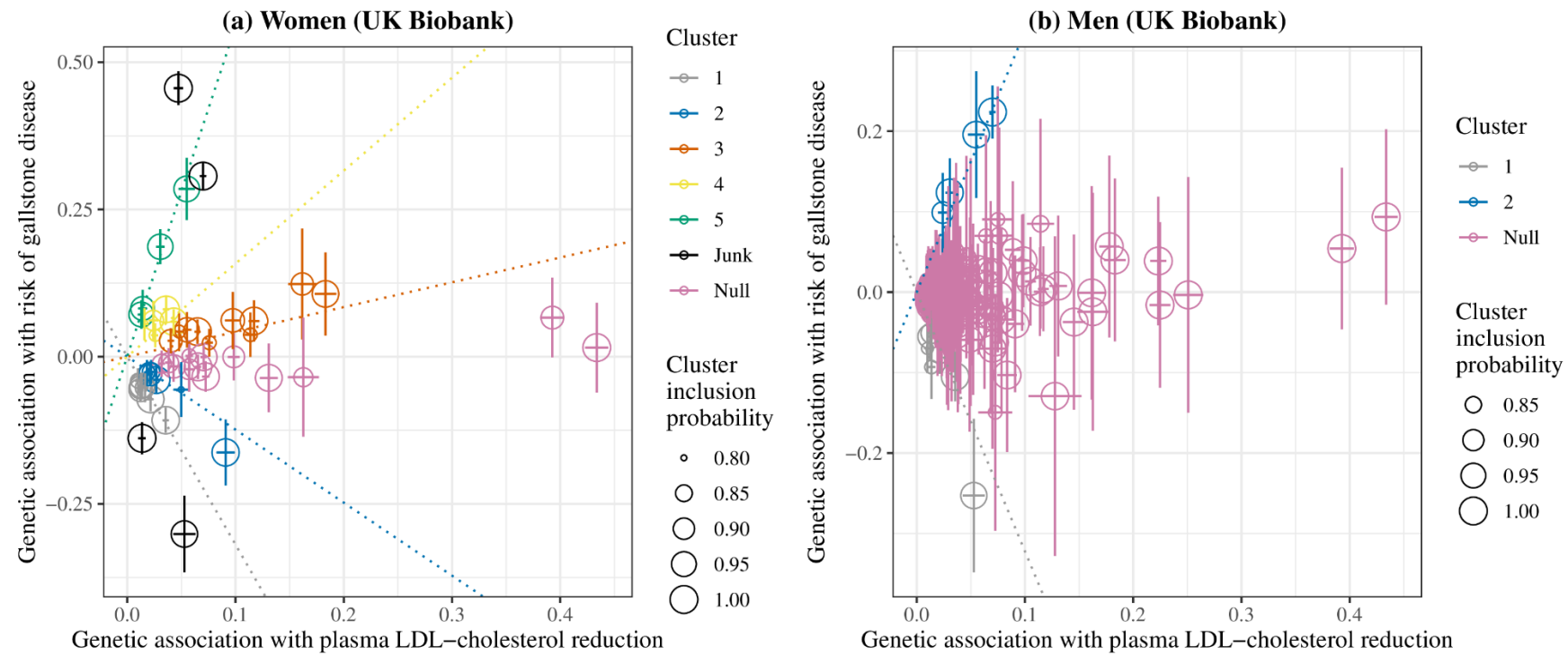
Supplemental Figure 7. SNP-specific estimates for genetically predicted lower plasma LDL-cholesterol on risk of gallstone disease in the UK Biobank and FinnGen for SNPs with inclusion probability >0.80 in clustered Mendelian randomization analyses.

LDL, low-density lipoprotein. Points represent SNPs; error bars are 95% confidence intervals for SNP-specific estimates. Estimates are expressed in log odds per 1-standard deviation (around 0.87 mmol/L) reduction in plasma LDL-cholesterol.



Supplemental Figure 8. Sex-specific Mendelian randomization estimates for genetically predicted lower LDL-cholesterol on risk of gallstone disease using all SNPs and cluster-specific SNPs (inclusion probability >0.80).

IVW, inverse variance weighted; LDL, low-density lipoprotein. Estimates are expressed in odds ratio per 1-standard deviation (around 0.87 mmol/L) reduction in plasma LDL-cholesterol. * denotes p value <0.05; ** denotes p value <0.001.



Supplemental Figure 9. Sex-specific genetic associations with plasma LDL-cholesterol reduction (standard deviation) and risk of gallstone disease (log odds) for SNPs with inclusion probability >0.80 in clustered Mendelian randomization analyses in the UK Biobank.

LDL, low-density lipoprotein. Points represent SNPs; dotted lines are cluster means; error bars are 95% confidence intervals for genetic associations.

Supplemental Table 1. Definition codes of gallstone disease across the three biobanks.

Biobank	Definition	ICD-10	ICD-9	ICD-8	UKB	OPCS4	OPCS3
UK Biobank	Gallstone-related pathology	K56.3, K80, K81, K85.1, K91.5, K91.86	560.31, 574, 575.0, 575.1, 576.0, 997.41	-	1160-1163	-	-
	Gallstone-related procedures	-	-	-	1455, 1528	J18, J21.1, J24.2, J24.3, J26.1, J33.1, J33.2, J38.1, J41.1, J41.3, J42.3, J49.1, J49.2, J52.1, J60.2, J68.1, J76.1	511, 521, 522, 530.2
	Alternative pathology	C17.0, C22-25, D01.5, D13.2, D13.4- 13.7, S36.1, K82.4, K83.5	152.0, 155-157, 230.8, 211.2, 211.5-211.7, 230.8, 575.6, 864, 868.02, 868.12	-	1024-1026	-	-
FinnGen	Cholelithiasis, broad definition with cholecystitis	K80, K81	574, 575.0, 575.1	574, 5750.0- 5750.3	-	-	-
Biobank Japan	Cholelithiasis	K80	-	-	-	-	-

ICD, International Classification of Diseases; OPCS, Office of Population Censuses and Surveys Classification of Surgical Operations and Procedures; UKB, UK Biobank codes for self-reported conditions verified by medical notes. UK Biobank participants with codes for gallstone-related pathology or procedures were defined as cases, but those who underwent gallstone-related procedures with alternative pathology were excluded from the analysis.

Supplemental Table 2. Description of GWAS data used in this study.

Phenotype	Study	Ancestry	Sample size	Covariates
Gallstone disease	UK Biobank	European	Cases = 21,201 women/9,346 men Controls = 177,478 women/159,264 men	Age, age ² , sex, age * sex, age ² * sex, and the first 20 PCs in sex-combined analyses; age, age ² and the first 20 PCs in sex-specific analyses
Gallstone disease	FinnGen	European	Cases = 34,461 Controls = 301,383	Age, sex, genotyping batch, and ten PCs
Gallstone disease	Biobank Japan	East Asian	Cases = 9,305 Controls = 168,253	Age, age ² , sex, age * sex, age ² * sex, and the first 20 PCs
Plasma LDL-cholesterol	GLGC	European	<i>N</i> = 1,231,289	Age, age ² , sex, PCs of ancestry and study-specific covariates
Plasma LDL-cholesterol	GLGC	East Asian	<i>N</i> = 82,587	Age, age ² , sex, PCs of ancestry and study-specific covariates
Coronary artery disease	CARDIoGRAM plusC4D	Mixed (mainly European)	Cases = 60,801 Controls = 123,504	Study-specific covariates
Myocardial infarction	Biobank Japan	East Asian	Cases = 14,992 Controls = 146,214	Age, age ² , sex, age * sex, age ² * sex, and the first 20 PCs

CARDIoGRAMplusC4D, Coronary ARtery DIsease Genome wide Replication and Meta-analysis plus The Coronary Artery Disease Genetics; GLGC, Global Lipids Genetics Consortium; GWAS, genome-wide association studies; LDL, low-density lipoprotein; PC, principal components.

Supplemental Table 3. SNP-specific estimates for genetic mimics of plasma LDL-cholesterol lowering therapies on plasma LDL-cholesterol (standard deviation) in people of European and East Asian ancestry.

Ancestry	Therapy	Gene	SNP	Effect allele	Other allele	Effect allele frequency	Beta	SE	<i>P</i> value	F-statistic
European	Statins	<i>HMGCR</i>	rs375392181	T	G	0.010	0.0454	0.0071	3.0E-08	41.3
European	Statins	<i>HMGCR</i>	rs72768351	G	A	0.019	-0.0401	0.0055	4.4E-10	52.3
European	Statins	<i>HMGCR</i>	rs75144964	G	C	0.016	-0.0403	0.0060	6.4E-09	45.3
European	Statins	<i>HMGCR</i>	rs1423527	A	C	0.399	0.0653	0.0014	<4.9E-324	2127.3
European	Statins	<i>HMGCR</i>	rs35122945	C	A	0.067	-0.0371	0.0030	5.2E-27	155.6
European	Statins	<i>HMGCR</i>	rs115664150	T	C	0.062	0.0431	0.0029	9.9E-38	221.4
European	Statins	<i>HMGCR</i>	rs75240579	T	C	0.040	-0.0404	0.0038	1.7E-20	115.7
European	Statins	<i>HMGCR</i>	rs112672253	T	A	0.008	0.0576	0.0083	1.9E-09	48.4
European	Statins	<i>HMGCR</i>	rs17244939	C	A	0.016	-0.0430	0.0062	1.7E-09	48.8
European	Statins	<i>HMGCR</i>	rs115169875	A	G	0.026	-0.0337	0.0046	2.9E-10	53.4
European	Statins	<i>HMGCR</i>	rs151264833	G	C	0.024	0.0340	0.0046	1.5E-10	55.0
European	Statins	<i>HMGCR</i>	rs62366588	A	C	0.058	-0.0346	0.0032	1.0E-20	117.0
European	Statins	<i>HMGCR</i>	rs74695562	G	T	0.042	-0.0369	0.0037	7.1E-18	99.7
European	Statins	<i>HMGCR</i>	rs78587954	G	C	0.065	0.0526	0.0028	2.7E-58	348.1
European	Statins	<i>HMGCR</i>	rs144083983	T	C	0.070	-0.0418	0.0030	1.9E-33	195.2
European	Statins	<i>HMGCR</i>	rs181668591	T	C	0.010	0.0604	0.0072	5.6E-13	69.8
European	Statins	<i>HMGCR</i>	rs114253542	C	T	0.007	0.0759	0.0087	3.9E-14	76.8
European	Statins	<i>HMGCR</i>	rs180755046	A	C	0.016	-0.0421	0.0062	5.5E-09	45.7
European	Statins	<i>HMGCR</i>	rs182826525	G	A	0.014	0.1035	0.0086	4.2E-25	143.9

European	Statins	<i>HMGCR</i>	rs151000110	A	G	0.057	0.0670	0.0031	1.5E-77	466.7
European	Statins	<i>HMGCR</i>	rs200823803	C	T	0.018	0.0551	0.0060	2.2E-15	84.5
European	PCSK9 inhibitors	<i>PCSK9</i>	rs12043403	C	T	0.098	-0.0245	0.0025	1.0E-17	98.7
European	PCSK9 inhibitors	<i>PCSK9</i>	rs12409233	C	G	0.088	-0.0226	0.0024	1.6E-15	85.3
European	PCSK9 inhibitors	<i>PCSK9</i>	rs11206498	G	A	0.342	0.0103	0.0015	1.4E-09	49.3
European	PCSK9 inhibitors	<i>PCSK9</i>	rs890576	G	C	0.202	-0.0153	0.0017	4.6E-14	76.4
European	PCSK9 inhibitors	<i>PCSK9</i>	rs145075626	G	C	0.017	-0.0503	0.0055	3.0E-15	83.6
European	PCSK9 inhibitors	<i>PCSK9</i>	rs17111474	T	C	0.296	0.0113	0.0016	2.4E-09	47.9
European	PCSK9 inhibitors	<i>PCSK9</i>	rs77875082	A	G	0.031	0.0538	0.0042	3.4E-28	162.8
European	PCSK9 inhibitors	<i>PCSK9</i>	rs2495503	A	G	0.258	0.0349	0.0016	2.3E-80	484.1
European	PCSK9 inhibitors	<i>PCSK9</i>	rs34232196	T	C	0.242	-0.0663	0.0016	3.0E-266	1632.3
European	PCSK9 inhibitors	<i>PCSK9</i>	rs374459115	A	G	0.017	0.0683	0.0068	2.8E-18	102.2
European	PCSK9 inhibitors	<i>PCSK9</i>	rs28775984	C	T	0.432	-0.0193	0.0030	4.3E-08	40.3
European	PCSK9 inhibitors	<i>PCSK9</i>	rs182491400	T	C	0.021	0.0445	0.0056	4.9E-12	64.1
European	PCSK9 inhibitors	<i>PCSK9</i>	rs181331606	G	C	0.090	0.0286	0.0030	1.0E-16	92.6
European	PCSK9 inhibitors	<i>PCSK9</i>	rs12739979	T	C	0.238	-0.0270	0.0018	6.3E-38	222.6
European	PCSK9 inhibitors	<i>PCSK9</i>	rs11810371	A	G	0.043	-0.0423	0.0037	2.7E-23	132.8
European	PCSK9 inhibitors	<i>PCSK9</i>	rs72660548	G	C	0.020	0.0704	0.0050	1.2E-34	202.4
European	PCSK9 inhibitors	<i>PCSK9</i>	rs17111503	G	A	0.256	0.0487	0.0016	6.8E-151	919.5
European	PCSK9 inhibitors	<i>PCSK9</i>	rs2479408	G	C	0.199	-0.0445	0.0018	1.7E-100	608.3
European	PCSK9 inhibitors	<i>PCSK9</i>	rs11591147	T	G	0.016	-0.4337	0.0054	<4.9E-324	6388.7
European	PCSK9 inhibitors	<i>PCSK9</i>	rs479832	C	T	0.178	-0.0144	0.0019	1.8E-11	60.7
European	PCSK9 inhibitors	<i>PCSK9</i>	rs41294825	T	A	0.043	-0.0414	0.0034	1.2E-25	147.2

European	PCSK9 inhibitors	<i>PCSK9</i>	rs693668	G	A	0.359	-0.0565	0.0015	2.6E-243	1490.6
European	PCSK9 inhibitors	<i>PCSK9</i>	rs7525503	T	G	0.023	0.0713	0.0050	6.2E-35	204.2
European	PCSK9 inhibitors	<i>PCSK9</i>	rs11206517	G	T	0.037	0.0889	0.0037	7.6E-95	573.4
European	PCSK9 inhibitors	<i>PCSK9</i>	rs41297885	G	C	0.036	-0.0406	0.0038	2.2E-20	115.0
European	PCSK9 inhibitors	<i>PCSK9</i>	rs28385715	G	T	0.023	0.0456	0.0049	9.9E-16	86.6
European	PCSK9 inhibitors	<i>PCSK9</i>	rs77011887	T	C	0.017	0.0459	0.0057	3.7E-12	64.8
European	PCSK9 inhibitors	<i>PCSK9</i>	rs142116310	A	G	0.011	0.0554	0.0072	3.8E-11	58.7
European	PCSK9 inhibitors	<i>PCSK9</i>	rs115465289	A	G	0.031	-0.0407	0.0042	1.0E-16	92.7
European	PCSK9 inhibitors	<i>PCSK9</i>	rs12031153	A	G	0.053	0.0331	0.0035	1.5E-16	91.6
European	PCSK9 inhibitors	<i>PCSK9</i>	rs138779133	G	A	0.027	-0.0599	0.0043	9.1E-33	190.9
European	PCSK9 inhibitors	<i>PCSK9</i>	rs79494709	C	G	0.049	-0.0258	0.0033	8.3E-12	62.7
European	PCSK9 inhibitors	<i>PCSK9</i>	rs55817205	A	G	0.012	0.0676	0.0071	2.6E-16	90.1
European	Ezetimibe	<i>NPC1L1</i>	rs77826622	C	T	0.022	0.0313	0.0049	4.4E-08	40.2
European	Ezetimibe	<i>NPC1L1</i>	rs17725246	C	T	0.195	0.0428	0.0018	1.3E-94	572.0
European	Ezetimibe	<i>NPC1L1</i>	rs77517259	T	C	0.010	0.0503	0.0073	2.6E-09	47.6
European	Ezetimibe	<i>NPC1L1</i>	rs217370	G	A	0.467	-0.0254	0.0014	1.3E-55	331.6
European	Ezetimibe	<i>NPC1L1</i>	rs79854399	T	C	0.019	-0.0390	0.0052	1.2E-10	55.8
European	Ezetimibe	<i>NPC1L1</i>	rs143116067	A	G	0.068	-0.0201	0.0029	3.7E-09	46.7
European	Targeting LDL receptors	<i>LDLR</i>	rs148724334	C	G	0.017	0.0428	0.0058	2.6E-10	53.7
European	Targeting LDL receptors	<i>LDLR</i>	rs117210556	C	T	0.065	0.0371	0.0028	5.8E-30	173.7
European	Targeting LDL receptors	<i>LDLR</i>	rs118115977	T	C	0.014	0.0394	0.0062	4.2E-08	40.4
European	Targeting LDL receptors	<i>LDLR</i>	rs12609589	T	C	0.157	0.0445	0.0020	3.4E-82	495.4
European	Targeting LDL receptors	<i>LDLR</i>	rs73013176	C	T	0.012	-0.2141	0.0068	2.4E-164	1002.6

European	Targeting LDL receptors	<i>LDLR</i>	rs10420325	A	T	0.350	0.0157	0.0023	2.0E-09	48.3
European	Targeting LDL receptors	<i>LDLR</i>	rs138736573	G	A	0.009	0.0692	0.0074	1.1E-15	86.3
European	Targeting LDL receptors	<i>LDLR</i>	rs36049922	C	T	0.035	0.0437	0.0040	1.7E-21	121.9
European	Targeting LDL receptors	<i>LDLR</i>	rs56315738	T	C	0.008	-0.1117	0.0089	2.0E-27	158.2
European	Targeting LDL receptors	<i>LDLR</i>	rs73015007	A	G	0.241	-0.0757	0.0016	<4.9E-324	2127.3
European	Targeting LDL receptors	<i>LDLR</i>	rs10423733	C	T	0.171	-0.1315	0.0019	<4.9E-324	4977.0
European	Targeting LDL receptors	<i>LDLR</i>	rs112159161	T	C	0.015	-0.2000	0.0059	1.6E-187	1145.9
European	Targeting LDL receptors	<i>LDLR</i>	rs146335137	T	C	0.009	0.0618	0.0077	5.6E-12	63.8
European	Targeting LDL receptors	<i>LDLR</i>	rs17242353	T	C	0.032	0.1091	0.0043	5.9E-108	654.4
European	Targeting LDL receptors	<i>LDLR</i>	rs17242367	T	C	0.069	0.0283	0.0029	3.9E-17	95.1
European	Targeting LDL receptors	<i>LDLR</i>	rs17248748	T	C	0.018	-0.0749	0.0056	5.5E-31	180.0
European	Targeting LDL receptors	<i>LDLR</i>	rs6511721	G	A	0.483	0.0590	0.0014	4.3E-270	1656.1
European	Targeting LDL receptors	<i>LDLR</i>	rs73015030	A	G	0.032	-0.1334	0.0040	1.1E-179	1097.5
European	Targeting LDL receptors	<i>LDLR</i>	rs560115066	G	T	0.036	0.0725	0.0045	6.6E-44	259.4
European	Targeting LDL receptors	<i>LDLR</i>	rs62129100	G	A	0.172	0.0214	0.0032	8.4E-09	44.6
European	Targeting LDL receptors	<i>LDLR</i>	rs147223423	T	A	0.010	0.0999	0.0071	5.7E-34	198.3
European	Targeting LDL receptors	<i>LDLR</i>	rs17249001	A	G	0.071	0.0715	0.0029	2.3E-99	601.4
European	Targeting LDL receptors	<i>LDLR</i>	rs3826810	A	G	0.043	0.0376	0.0034	2.9E-21	120.3
European	Targeting LDL receptors	<i>LDLR</i>	rs5742911	G	A	0.312	-0.0659	0.0015	6.0E-306	1877.7
European	Targeting LDL receptors	<i>LDLR</i>	rs143587805	T	A	0.012	0.0631	0.0067	4.0E-16	89.0
European	Targeting LDL receptors	<i>LDLR</i>	rs147540853	A	G	0.026	-0.0911	0.0043	5.6E-75	450.9
European	Targeting LDL receptors	<i>LDLR</i>	rs111622889	T	C	0.021	0.0447	0.0056	6.7E-12	63.3
European	Targeting LDL receptors	<i>LDLR</i>	rs148362484	T	C	0.028	0.0286	0.0044	1.7E-08	42.8

European	Targeting LDL receptors	<i>LDLR</i>	rs189143685	T	C	0.011	0.0494	0.0069	6.1E-10	51.4
European	Targeting LDL receptors	<i>LDLR</i>	rs72983207	T	A	0.018	-0.0443	0.0056	1.1E-11	62.0
European	Targeting LDL receptors	<i>LDLR</i>	rs4804573	A	G	0.467	-0.0630	0.0014	1.9e-310	1905.5
European	Targeting LDL receptors	<i>LDLR</i>	rs117339792	A	G	0.016	-0.0846	0.0061	1.2E-32	190.1
European	Targeting LDL receptors	<i>LDLR</i>	rs146576912	T	C	0.051	-0.1555	0.0035	<4.9E-324	1992.1
European	Targeting LDL receptors	<i>LDLR</i>	rs4804149	C	T	0.288	0.0241	0.0016	1.8E-37	219.9
European	Targeting LDL receptors	<i>LDLR</i>	rs379309	C	T	0.495	0.0252	0.0014	2.8E-52	311.0
European	Targeting LDL receptors	<i>LDLR</i>	rs139198665	T	C	0.026	0.0614	0.0048	2.5E-28	163.6
European	Targeting LDL receptors	<i>LDLR</i>	rs140842514	C	A	0.029	-0.0283	0.0043	1.3E-08	43.4
European	Targeting LDL receptors	<i>LDLR</i>	rs12975458	A	G	0.057	0.0214	0.0031	1.6E-09	48.9
European	Targeting LDL receptors	<i>LDLR</i>	rs34243815	T	C	0.063	-0.0232	0.0029	8.9E-12	62.5
European	Targeting LDL receptors	<i>LDLR</i>	rs9967639	T	A	0.074	0.0222	0.0027	9.6E-13	68.4
European	Targeting LDL receptors	<i>LDLR</i>	rs66466742	T	C	0.039	-0.0514	0.0035	6.7E-36	210.2
European	Targeting LDL receptors	<i>LDLR</i>	rs1433091	A	G	0.088	0.0305	0.0026	4.3E-24	137.7
European	Mipomersen	<i>APOB</i>	rs62120800	A	G	0.013	-0.1088	0.0062	5.7E-51	302.9
European	Mipomersen	<i>APOB</i>	rs137978266	G	A	0.013	0.0818	0.0062	2.5E-30	176.0
European	Mipomersen	<i>APOB</i>	rs79106033	T	C	0.026	-0.0300	0.0044	5.8E-09	45.5
European	Mipomersen	<i>APOB</i>	rs576306544	A	C	0.012	-0.0578	0.0074	1.2E-11	61.8
European	Mipomersen	<i>APOB</i>	rs1317821	T	C	0.253	0.0515	0.0016	1.1E-169	1035.5
European	Mipomersen	<i>APOB</i>	rs76384951	C	A	0.076	-0.0182	0.0027	9.8E-09	44.2
European	Mipomersen	<i>APOB</i>	rs62122481	A	C	0.359	0.0705	0.0015	<4.9E-324	2347.9
European	Mipomersen	<i>APOB</i>	rs1042023	C	G	0.012	0.1359	0.0068	1.3E-67	405.5
European	Mipomersen	<i>APOB</i>	rs533617	C	T	0.041	-0.1261	0.0035	4.9E-215	1315.8

European	Mipomersen	<i>APOB</i>	rs497166	T	C	0.020	-0.0959	0.0049	2.7E-63	378.9
European	Mipomersen	<i>APOB</i>	rs184507838	T	C	0.010	-0.1258	0.0069	2.8E-56	335.6
European	Mipomersen	<i>APOB</i>	rs531819	T	G	0.147	-0.1160	0.0020	<4.9E-324	3441.1
European	Mipomersen	<i>APOB</i>	rs72653053	C	T	0.011	-0.0799	0.0068	3.5E-24	138.2
European	Mipomersen	<i>APOB</i>	rs9282606	T	G	0.045	0.0649	0.0034	2.9E-59	354.0
European	Mipomersen	<i>APOB</i>	rs3056574	A	T	0.137	0.0302	0.0026	3.7E-23	132.0
European	Mipomersen	<i>APOB</i>	rs72902579	C	T	0.038	-0.0975	0.0037	6.6E-115	697.3
European	Mipomersen	<i>APOB</i>	rs200362396	A	T	0.344	0.0533	0.0032	3.8E-46	273.2
European	Mipomersen	<i>APOB</i>	rs72780178	C	A	0.027	0.0608	0.0043	1.2E-33	196.4
European	Mipomersen	<i>APOB</i>	rs78158108	C	G	0.074	0.0817	0.0027	5.9E-146	889.0
European	Mipomersen	<i>APOB</i>	rs377122620	G	T	0.097	0.1046	0.0041	2.2E-105	638.5
European	Mipomersen	<i>APOB</i>	rs145713446	A	T	0.006	0.0971	0.0096	2.6E-18	102.3
European	Mipomersen	<i>APOB</i>	rs114185526	T	C	0.008	-0.1056	0.0082	7.6E-29	166.8
European	Mipomersen	<i>APOB</i>	rs17395484	T	C	0.022	0.0669	0.0049	4.7E-32	186.6
European	Mipomersen	<i>APOB</i>	rs548774896	G	T	0.118	0.0667	0.0042	4.7E-42	248.0
European	Mipomersen	<i>APOB</i>	rs72782175	C	T	0.014	-0.0955	0.0060	2.4E-42	249.8
European	Targeting ABCG5/8	<i>ABCG5/8</i>	rs145288624	T	C	0.066	0.0281	0.0030	7.0E-16	87.5
European	Targeting ABCG5/8	<i>ABCG5/8</i>	rs78354019	G	A	0.056	0.0230	0.0031	8.9E-11	56.5
European	Targeting ABCG5/8	<i>ABCG5/8</i>	rs143706998	C	A	0.008	-0.1129	0.0081	2.0E-33	194.9
European	Targeting ABCG5/8	<i>ABCG5/8</i>	rs576115488	G	T	0.012	-0.0877	0.0082	1.6E-20	115.7
European	Targeting ABCG5/8	<i>ABCG5/8</i>	rs113140405	T	C	0.018	-0.0504	0.0057	1.7E-14	79.0
European	Targeting ABCG5/8	<i>ABCG5/8</i>	rs10186086	A	T	0.194	-0.0216	0.0018	5.8E-26	149.1
European	Targeting ABCG5/8	<i>ABCG5/8</i>	rs531043156	G	T	0.018	-0.0907	0.0076	3.9E-25	144.1

European	Targeting ABCG5/8	<i>ABCG5/8</i>	rs139029940	A	C	0.152	0.0348	0.0020	1.6E-51	306.2
European	Targeting ABCG5/8	<i>ABCG5/8</i>	rs4131228	G	A	0.021	0.0415	0.0052	4.5E-12	64.3
European	Targeting ABCG5/8	<i>ABCG5/8</i>	rs182201537	G	A	0.009	0.0835	0.0078	2.7E-20	114.5
European	Targeting ABCG5/8	<i>ABCG5/8</i>	rs116487096	A	T	0.039	-0.0288	0.0037	1.8E-11	60.6
European	Targeting ABCG5/8	<i>ABCG5/8</i>	rs75331444	A	G	0.066	-0.1146	0.0028	3.6E-278	1706.0
European	Targeting ABCG5/8	<i>ABCG5/8</i>	rs55726838	A	G	0.010	0.0784	0.0075	2.3E-19	108.8
European	Targeting ABCG5/8	<i>ABCG5/8</i>	rs4299376	G	T	0.309	0.0700	0.0015	<4.9E-324	2155.6
European	Targeting ABCG5/8	<i>ABCG5/8</i>	rs67734975	G	C	0.045	0.0525	0.0033	1.0E-42	252.1
European	Targeting ABCG5/8	<i>ABCG5/8</i>	rs10221914	T	C	0.028	0.0296	0.0045	1.2E-08	43.6
European	Targeting ABCG5/8	<i>ABCG5/8</i>	rs4148216	T	C	0.169	-0.0281	0.0019	7.6E-39	228.3
European	Targeting ABCG5/8	<i>ABCG5/8</i>	rs187356514	C	T	0.013	0.0507	0.0063	5.0E-12	64.0
European	Targeting ABCG5/8	<i>ABCG5/8</i>	rs13396356	T	A	0.058	-0.0286	0.0030	2.2E-16	90.5
European	Targeting ABCG5/8	<i>ABCG5/8</i>	rs149109487	C	G	0.020	-0.0414	0.0051	1.7E-12	66.9
European	Targeting ABCG5/8	<i>ABCG5/8</i>	rs75841075	A	G	0.023	0.0310	0.0046	7.6E-09	44.8
European	Targeting ABCG5/8	<i>ABCG5/8</i>	rs7573769	G	A	0.176	-0.0181	0.0018	1.2E-17	98.2
European	Targeting ABCG5/8	<i>ABCG5/8</i>	rs111859423	C	T	0.032	0.0333	0.0043	1.4E-11	61.3
European	Targeting ABCG5/8	<i>ABCG5/8</i>	rs188238029	T	A	0.009	0.0514	0.0076	6.4E-09	45.3
European	Targeting ABCG5/8	<i>ABCG5/8</i>	rs62135111	A	G	0.143	0.0222	0.0020	3.0E-22	126.4
East Asian	Statins	<i>HMGCR</i>	rs7717415	G	A	0.470	0.0408	0.0052	4.4E-14	62.1
East Asian	Statins	<i>HMGCR</i>	rs78908099	C	T	0.042	0.0851	0.0128	2.2E-10	43.9
East Asian	Statins	<i>HMGCR</i>	rs77679151	T	C	0.053	-0.0698	0.0113	3.7E-09	37.9
East Asian	Statins	<i>HMGCR</i>	rs6453131	T	G	0.498	-0.0815	0.0050	4.3E-55	266.3
East Asian	Statins	<i>HMGCR</i>	rs139488631	C	T	0.013	-0.1584	0.0253	1.9E-09	39.3

East Asian	PCSK9 inhibitors	<i>PCSK9</i>	rs34232196	T	C	0.127	-0.0607	0.0077	4.3E-14	62.1
East Asian	PCSK9 inhibitors	<i>PCSK9</i>	rs28848281	A	G	0.425	-0.0354	0.0058	5.7E-09	37.0
East Asian	PCSK9 inhibitors	<i>PCSK9</i>	rs2495491	T	G	0.273	-0.0371	0.0061	5.9E-09	36.9
East Asian	PCSK9 inhibitors	<i>PCSK9</i>	rs151193009	T	C	0.009	-0.4860	0.0333	2.3E-44	212.7
East Asian	PCSK9 inhibitors	<i>PCSK9</i>	rs10888897	T	C	0.187	-0.0604	0.0066	1.3E-18	84.6
East Asian	PCSK9 inhibitors	<i>PCSK9</i>	rs17111652	T	C	0.060	0.0763	0.0107	1.0E-11	50.4
East Asian	PCSK9 inhibitors	<i>PCSK9</i>	rs6663252	C	T	0.120	-0.0751	0.0078	3.5E-20	92.2
East Asian	Targeting LDL receptors	<i>LDLR</i>	rs145960625	A	G	0.008	-0.2053	0.0308	1.7E-10	44.4
East Asian	Targeting LDL receptors	<i>LDLR</i>	rs67475684	T	A	0.162	0.0713	0.0069	4.5E-23	106.6
East Asian	Targeting LDL receptors	<i>LDLR</i>	rs5927	A	G	0.057	-0.0859	0.0116	1.5E-12	54.5
East Asian	Targeting LDL receptors	<i>LDLR</i>	rs117373926	G	T	0.112	0.0514	0.0085	6.5E-09	36.7
East Asian	Targeting LDL receptors	<i>LDLR</i>	rs2738464	G	C	0.283	-0.1080	0.0059	8.3E-68	329.9
East Asian	Targeting LDL receptors	<i>LDLR</i>	rs117523171	G	T	0.327	0.0398	0.0067	1.3E-08	35.2
East Asian	Targeting LDL receptors	<i>LDLR</i>	rs183241760	A	G	0.018	-0.1617	0.0200	9.2E-15	65.4
East Asian	Targeting LDL receptors	<i>LDLR</i>	rs442363	A	G	0.408	0.0371	0.0056	2.2E-10	43.9
East Asian	Targeting LDL receptors	<i>LDLR</i>	rs17699089	G	A	0.261	-0.0620	0.0057	3.0E-25	117.4
East Asian	Mipomersen	<i>APOB</i>	rs76684042	T	A	0.024	0.1263	0.0204	2.8E-09	38.4
East Asian	Mipomersen	<i>APOB</i>	rs76693756	T	C	0.017	0.1183	0.0196	6.8E-09	36.6
East Asian	Mipomersen	<i>APOB</i>	rs13306194	A	G	0.114	-0.1235	0.0079	8.6E-51	244.8
East Asian	Mipomersen	<i>APOB</i>	rs589566	A	G	0.216	0.0649	0.0063	6.0E-23	106.0
East Asian	Mipomersen	<i>APOB</i>	rs528148801	A	C	0.009	-0.1590	0.0259	3.8E-09	37.8

ABCG5/8, adenosine triphosphate (ATP)-binding cassette transporters G5/8; LDL, low-density lipoprotein; PCSK9, proprotein convertase subtilisin/kexin type 9.

Supplemental Table 4. SNP-specific estimates for genetic predictors for plasma LDL-cholesterol on plasma LDL-cholesterol (standard deviation) in people of European and East Asian ancestry.

Ancestry	SNP	Effect allele	Other allele	Effect allele frequency	Beta	SE	<i>P</i> value	F-statistic
European	rs1123571	A	G	0.469	-0.0110	0.0014	3.0E-11	59.3
European	rs1497406	A	G	0.416	-0.0136	0.0014	7.5E-17	93.4
European	rs10903129	A	G	0.452	-0.0258	0.0014	5.2E-58	346.3
European	rs12094989	T	C	0.215	-0.0129	0.0017	5.2E-11	57.9
European	rs114165349	C	G	0.023	0.0835	0.0046	8.4E-55	326.5
European	rs8681	A	G	0.256	-0.0112	0.0016	1.4E-09	49.3
European	rs213499	C	A	0.468	-0.0102	0.0014	3.1E-10	53.2
European	rs374459115	A	G	0.017	0.0683	0.0068	2.8E-18	102.2
European	rs11591147	T	G	0.016	-0.4337	0.0054	<4.9E-324	6388.7
European	rs693668	G	A	0.359	-0.0565	0.0015	2.6E-243	1490.6
European	rs11206517	G	T	0.037	0.0889	0.0037	7.6E-95	573.4
European	rs6588577	A	C	0.066	-0.0219	0.0028	1.9E-11	60.5
European	rs7534572	C	G	0.329	-0.0429	0.0015	2.2E-127	774.4
European	rs2391159	T	C	0.207	-0.0234	0.0017	6.6E-32	185.6
European	rs35271870	C	T	0.084	-0.1171	0.0025	<4.9E-324	2164.6
European	rs141521383	C	G	0.023	0.0374	0.0050	1.1E-10	55.9
European	rs35358959	A	G	0.081	-0.1051	0.0026	7.4E-276	1691.7
European	rs17036094	C	A	0.012	-0.1143	0.0064	2.4E-53	317.5
European	rs61798348	T	A	0.019	-0.0345	0.0052	9.6E-09	44.2
European	rs267733	G	A	0.156	-0.0187	0.0019	2.2E-17	96.7
European	rs4390169	A	G	0.485	0.0120	0.0014	8.8E-14	74.7
European	rs115383270	A	G	0.073	0.0193	0.0027	1.3E-09	49.4
European	rs6682862	A	G	0.164	-0.0137	0.0019	3.4E-10	52.9
European	rs1689801	A	G	0.325	0.0144	0.0015	3.9E-17	95.2
European	rs2296288	T	C	0.437	-0.0113	0.0014	3.8E-12	64.8
European	rs1434282	C	T	0.277	-0.0109	0.0016	2.1E-09	48.2
European	rs2642438	A	G	0.294	-0.0269	0.0015	3.2E-52	310.6
European	rs12138866	G	A	0.040	-0.0240	0.0037	1.5E-08	43.1
European	rs7544869	A	T	0.453	-0.0122	0.0014	7.4E-14	75.2
European	rs553427	C	T	0.473	-0.0403	0.0014	7.0E-135	820.6
European	rs10910522	A	G	0.429	-0.0119	0.0014	4.6E-13	70.3
European	rs7512010	A	T	0.193	-0.0183	0.0018	1.6E-18	103.5

European	rs3935011	C	T	0.480	0.0089	0.0014	3.6E-08	40.7
European	rs3820897	T	C	0.192	0.0159	0.0018	8.2E-15	81.0
European	rs67269656	T	C	0.265	-0.0104	0.0016	1.3E-08	43.5
European	rs4465730	A	G	0.219	0.0146	0.0017	6.2E-14	75.7
European	rs77370158	G	A	0.077	0.0298	0.0027	9.4E-22	123.4
European	rs115692156	G	A	0.010	-0.0749	0.0074	1.8E-18	103.3
European	rs62122481	A	C	0.359	0.0705	0.0015	<4.9E-324	2347.9
European	rs12720796	C	A	0.021	0.0692	0.0049	6.8E-34	197.8
European	rs72902579	C	T	0.038	-0.0975	0.0037	6.6E-115	697.3
European	rs11891554	A	G	0.053	-0.0234	0.0032	2.0E-10	54.4
European	rs2374569	T	C	0.369	-0.0092	0.0014	3.8E-08	40.6
European	rs185263492	A	T	0.159	0.0306	0.0020	1.6E-38	226.2
European	rs4299376	G	T	0.309	0.0700	0.0015	<4.9E-324	2155.6
European	rs6709904	G	A	0.109	-0.0472	0.0022	3.8E-76	458.0
European	rs6741740	A	G	0.241	0.0130	0.0016	5.2E-12	64.0
European	rs4671050	T	G	0.320	-0.0224	0.0015	8.3E-38	221.9
European	rs954680	C	G	0.298	-0.0124	0.0015	4.2E-12	64.5
European	rs11887443	T	G	0.263	-0.0125	0.0018	9.5E-10	50.3
European	rs2970902	C	G	0.342	0.0101	0.0015	3.1E-09	47.1
European	rs113313551	G	C	0.148	-0.0127	0.0020	2.0E-08	42.3
European	rs1992172	G	A	0.194	0.0195	0.0018	1.1E-21	122.9
European	rs150474434	A	G	0.095	-0.0423	0.0024	4.9E-53	315.6
European	rs17050272	A	G	0.421	-0.0228	0.0014	3.2E-42	249.0
European	rs1375131	C	T	0.313	0.0196	0.0017	1.3E-22	128.7
European	rs12614487	T	C	0.074	-0.0266	0.0026	3.0E-18	102.0
European	rs10184004	T	C	0.413	-0.0105	0.0014	1.4E-10	55.3
European	rs10184673	G	A	0.405	0.0220	0.0014	1.4E-40	239.0
European	rs12693968	A	G	0.258	0.0213	0.0016	1.6E-30	177.1
European	rs3814365	T	C	0.443	-0.0137	0.0014	5.7E-17	94.1
European	rs1250259	T	A	0.264	-0.0177	0.0016	1.2E-21	122.6
European	rs78058190	A	G	0.052	0.0240	0.0036	1.0E-08	44.1
European	rs6431630	A	G	0.105	0.0241	0.0023	2.9E-20	114.2
European	rs146194062	T	C	0.012	-0.0702	0.0070	8.1E-18	99.3
European	rs13076933	G	T	0.257	-0.0245	0.0016	6.3E-40	234.9
European	rs6792725	A	G	0.319	0.0153	0.0016	2.9E-17	95.9
European	rs9837622	A	T	0.073	-0.0371	0.0027	2.8E-32	187.9

European	rs71311871	G	A	0.081	-0.0380	0.0025	1.3E-38	226.8
European	rs55921103	G	T	0.359	-0.0126	0.0015	1.8E-13	72.8
European	rs9837149	C	G	0.153	0.0189	0.0019	2.2E-17	96.6
European	rs11719535	C	T	0.244	-0.0118	0.0016	4.4E-10	52.3
European	rs55732372	A	G	0.076	0.0174	0.0027	2.0E-08	42.3
European	rs74341202	A	G	0.050	-0.0426	0.0032	5.2E-30	174.0
European	rs523118	T	G	0.211	-0.0144	0.0018	2.2E-12	66.3
European	rs9653945	A	G	0.347	-0.0130	0.0015	1.4E-14	79.5
European	rs6441313	A	G	0.463	0.0126	0.0014	2.0E-14	78.6
European	rs56118251	G	A	0.157	0.0137	0.0019	4.1E-10	52.5
European	rs13108218	A	G	0.385	0.0183	0.0015	5.2E-27	155.6
European	rs4234798	T	G	0.390	-0.0110	0.0014	2.0E-11	60.3
European	rs79623641	A	G	0.068	-0.0179	0.0028	4.4E-08	40.3
European	rs112575086	T	C	0.120	-0.0139	0.0021	1.8E-08	42.7
European	rs146674238	T	A	0.014	0.0472	0.0065	4.9E-10	52.0
European	rs34707604	C	T	0.248	0.0318	0.0019	1.1E-48	288.9
European	rs149314105	T	C	0.028	-0.0339	0.0050	5.2E-09	45.8
European	rs72663045	G	T	0.020	0.0403	0.0050	5.1E-12	64.0
European	rs342467	T	C	0.399	-0.0102	0.0014	6.6E-10	51.2
European	rs11499828	C	T	0.108	0.0165	0.0023	2.7E-10	53.6
European	rs28497720	T	C	0.251	-0.0175	0.0016	2.5E-21	120.8
European	rs17617028	A	G	0.217	0.0133	0.0017	8.7E-12	62.6
European	rs138204164	G	C	0.132	-0.0145	0.0021	1.3E-09	49.5
European	rs41280463	A	G	0.167	-0.0152	0.0019	1.6E-12	67.1
European	rs116692022	G	A	0.013	0.0455	0.0065	1.2E-09	49.7
European	rs72701754	T	A	0.404	0.0092	0.0014	3.6E-08	40.7
European	rs116734477	T	C	0.038	-0.0511	0.0037	1.9E-33	195.1
European	rs3010275	G	T	0.210	-0.0183	0.0017	1.6E-20	115.9
European	rs1423527	A	C	0.399	0.0653	0.0014	<4.9E-324	2127.3
European	rs6869845	C	T	0.451	-0.0167	0.0014	5.7E-25	143.1
European	rs2706381	T	C	0.196	-0.0195	0.0018	7.0E-22	124.1
European	rs13153174	G	C	0.214	-0.0108	0.0017	3.8E-08	40.6
European	rs11167778	T	C	0.107	0.0218	0.0023	6.2E-17	93.9
European	rs543486395	A	C	0.023	-0.0488	0.0060	2.4E-12	66.0
European	rs12657266	C	T	0.365	-0.0353	0.0014	9.0E-100	603.8
European	rs13360569	T	C	0.430	-0.0098	0.0014	2.1E-09	48.2

European	rs352942	A	G	0.252	-0.0104	0.0016	3.8E-08	40.6
European	rs147539187	G	C	0.069	-0.0231	0.0028	6.0E-13	69.6
European	rs2235215	C	T	0.321	-0.0318	0.0015	4.3E-76	457.7
European	rs1800562	A	G	0.068	-0.0572	0.0028	2.2E-71	428.7
European	rs1061537	A	G	0.444	0.0136	0.0016	2.1E-13	72.4
European	rs28732146	A	T	0.196	0.0140	0.0018	2.0E-11	60.4
European	rs6689	G	A	0.203	0.0390	0.0019	2.0E-70	422.8
European	rs114863007	A	G	0.097	-0.0267	0.0024	1.1E-22	129.0
European	rs62406547	C	A	0.496	-0.0128	0.0016	1.1E-12	68.0
European	rs17665178	G	C	0.302	-0.0159	0.0016	1.6E-18	103.6
European	rs12662589	C	G	0.259	0.0153	0.0016	7.8E-17	93.3
European	rs9496567	A	G	0.236	-0.0210	0.0016	3.4E-28	162.8
European	rs62419249	A	G	0.478	0.0121	0.0014	1.0E-13	74.3
European	rs4946713	A	C	0.447	-0.0112	0.0014	4.9E-12	64.1
European	rs1556857	C	T	0.407	-0.0169	0.0014	4.4E-25	143.7
European	rs72971192	C	T	0.235	-0.0118	0.0017	1.4E-09	49.3
European	rs141783576	C	G	0.069	0.0240	0.0031	1.5E-11	61.2
European	rs9399137	C	T	0.262	-0.0256	0.0016	4.4E-44	260.5
European	rs76933614	C	T	0.077	0.0232	0.0027	7.4E-14	75.2
European	rs112170089	A	G	0.018	0.0521	0.0059	3.6E-14	77.1
European	rs12208357	T	C	0.070	0.0645	0.0027	1.9E-94	571.0
European	rs146534110	T	G	0.012	0.0761	0.0066	4.9E-23	131.2
European	rs144833821	C	T	0.009	-0.0498	0.0076	1.6E-08	42.9
European	rs117733303	G	A	0.018	0.1453	0.0053	1.2E-123	751.2
European	rs10455872	G	A	0.069	0.1138	0.0027	3.2E-281	1724.9
European	rs12055389	T	C	0.057	-0.0278	0.0030	1.6E-15	85.3
European	rs10272002	G	A	0.210	-0.0223	0.0017	2.9E-29	169.4
European	rs34927723	T	C	0.157	-0.0134	0.0019	2.3E-09	48.0
European	rs55696093	G	A	0.211	0.0382	0.0017	3.1E-83	501.8
European	rs896311	G	A	0.300	-0.0166	0.0015	7.4E-21	117.9
European	rs56001710	A	T	0.423	-0.0137	0.0017	7.1E-12	63.1
European	rs12533280	T	C	0.195	0.0180	0.0018	9.4E-19	105.0
European	rs7808613	G	C	0.245	0.0113	0.0016	2.7E-09	47.6
European	rs17725246	C	T	0.195	0.0428	0.0018	1.3E-94	572.0
European	rs799157	T	C	0.036	0.0318	0.0039	1.4E-12	67.3
European	rs1057868	T	C	0.288	0.0115	0.0015	7.7E-11	56.9

European	rs1014283	A	C	0.183	-0.0136	0.0018	6.1E-11	57.5
European	rs6967728	A	G	0.183	-0.0179	0.0018	3.5E-17	95.4
European	rs564449	T	G	0.115	0.0267	0.0022	3.9E-26	150.2
European	rs1838931	T	C	0.312	0.0113	0.0015	1.5E-10	55.2
European	rs4374942	C	T	0.081	0.0200	0.0026	1.6E-11	61.1
European	rs2936512	T	C	0.326	-0.0119	0.0015	4.0E-12	64.6
European	rs9987289	A	G	0.092	-0.0599	0.0024	1.6E-103	627.1
European	rs10108282	A	T	0.212	0.0139	0.0017	2.3E-12	66.1
European	rs13255048	A	G	0.141	0.0210	0.0020	9.6E-20	111.1
European	rs151150389	C	T	0.034	0.0298	0.0038	1.9E-11	60.5
European	rs117139027	A	G	0.013	-0.0783	0.0064	7.3E-26	148.5
European	rs28615248	C	T	0.196	0.0244	0.0018	4.0E-33	193.1
European	rs9297994	G	A	0.338	0.0355	0.0015	4.0E-97	587.5
European	rs12114596	T	C	0.347	0.0117	0.0016	3.4E-10	53.0
European	rs62509311	T	A	0.279	-0.0153	0.0016	3.4E-17	95.5
European	rs2737245	T	G	0.277	-0.0254	0.0016	3.2E-45	267.5
European	rs13249867	T	G	0.136	-0.0207	0.0027	2.7E-11	59.6
European	rs28601761	G	C	0.422	-0.0649	0.0014	<4.9E-324	2092.2
European	rs11787335	T	C	0.355	0.0231	0.0015	3.8E-42	248.6
European	rs3780181	G	A	0.070	-0.0359	0.0028	3.8E-29	168.7
European	rs28498684	A	G	0.400	0.0132	0.0014	1.3E-15	85.8
European	rs12551960	T	C	0.079	0.0350	0.0026	4.3E-30	174.5
European	rs7864568	A	G	0.316	-0.0156	0.0016	7.4E-18	99.6
European	rs1571791	T	C	0.380	0.0139	0.0014	8.1E-17	93.2
European	rs9410207	C	T	0.066	-0.0200	0.0028	9.8E-10	50.2
European	rs2066714	C	T	0.124	0.0190	0.0021	5.2E-15	82.2
European	rs11789603	T	C	0.101	0.0236	0.0023	2.2E-18	102.7
European	rs2740488	C	A	0.261	-0.0249	0.0016	4.6E-42	248.1
European	rs56294298	A	G	0.085	-0.0183	0.0026	1.4E-09	49.2
European	rs6478851	A	G	0.236	-0.0132	0.0016	4.1E-12	64.5
European	rs2519093	T	C	0.188	0.0724	0.0018	5.8E-278	1704.7
European	rs76643124	A	G	0.024	-0.0289	0.0045	3.0E-08	41.3
European	rs13301660	T	C	0.270	-0.0156	0.0016	8.2E-18	99.3
European	rs7903259	G	C	0.416	0.0163	0.0014	4.3E-23	131.6
European	rs1896995	C	T	0.498	-0.0122	0.0014	8.7E-14	74.7
European	rs17476364	C	T	0.099	-0.0268	0.0023	3.0E-23	132.5

European	rs1870140	A	G	0.157	-0.0125	0.0019	2.2E-08	42.0
European	rs2068888	A	G	0.451	-0.0180	0.0014	7.3E-29	166.9
European	rs61886346	T	C	0.061	-0.0192	0.0029	1.2E-08	43.6
European	rs603424	A	G	0.169	0.0159	0.0019	3.7E-13	70.9
European	rs2792751	T	C	0.281	0.0239	0.0015	2.7E-41	243.3
European	rs60847460	T	C	0.140	-0.0182	0.0020	3.5E-15	83.2
European	rs2301179	A	G	0.492	-0.0159	0.0014	8.2E-23	129.8
European	rs7904973	G	T	0.424	-0.0210	0.0014	7.0E-38	222.4
European	rs7124487	T	C	0.186	-0.0116	0.0018	4.1E-08	40.4
European	rs7108486	C	T	0.024	-0.0322	0.0046	1.3E-09	49.4
European	rs12271333	C	A	0.134	0.0165	0.0020	2.7E-12	65.7
European	rs11601507	A	C	0.070	0.0404	0.0032	4.8E-28	161.9
European	rs10832956	T	C	0.272	-0.0208	0.0016	1.0E-30	178.4
European	rs61882680	T	C	0.030	-0.0280	0.0041	4.3E-09	46.3
European	rs174547	C	T	0.346	-0.0429	0.0015	6.4E-143	870.3
European	rs77631946	A	C	0.093	-0.0187	0.0025	5.2E-11	57.9
European	rs1638586	A	G	0.080	-0.0196	0.0026	5.2E-11	57.9
European	rs78643851	T	G	0.021	0.0348	0.0054	2.5E-08	41.7
European	rs11226108	C	G	0.191	-0.0143	0.0018	7.9E-12	62.8
European	rs964184	G	C	0.135	0.0552	0.0020	3.5E-123	748.4
European	rs141469619	G	A	0.009	0.0725	0.0080	3.8E-15	83.0
European	rs12970	A	G	0.061	-0.0268	0.0029	1.6E-15	85.4
European	rs4307732	A	G	0.108	0.0480	0.0022	7.9E-78	468.5
European	rs35882350	G	A	0.256	0.0182	0.0016	5.4E-22	124.8
European	rs117233107	A	G	0.015	-0.0459	0.0060	3.7E-11	58.8
European	rs75667995	C	T	0.068	-0.0291	0.0027	3.4E-20	113.9
European	rs11175540	A	T	0.066	0.0261	0.0028	2.7E-15	83.9
European	rs2250751	A	G	0.341	-0.0165	0.0015	4.7E-22	125.2
European	rs7300192	A	G	0.365	0.0135	0.0015	2.5E-15	84.1
European	rs74090765	G	T	0.173	0.0145	0.0018	1.0E-11	62.2
European	rs61754230	T	C	0.016	0.0491	0.0057	1.6E-13	73.2
European	rs12306780	T	A	0.342	0.0116	0.0015	9.8E-12	62.3
European	rs1515565	A	G	0.482	-0.0093	0.0014	9.0E-09	44.4
European	rs11837065	T	C	0.366	-0.0111	0.0015	7.2E-11	57.0
European	rs3184504	T	C	0.473	-0.0234	0.0014	1.3E-47	282.2
European	rs1169288	C	A	0.322	0.0359	0.0015	1.1E-95	578.7

European	rs2247139	A	G	0.132	0.0132	0.0020	2.4E-08	41.8
European	rs2451322	G	A	0.405	-0.0106	0.0014	1.1E-10	55.9
European	rs11057841	T	C	0.141	0.0219	0.0020	9.0E-21	117.3
European	rs75588192	A	G	0.140	0.0165	0.0021	2.2E-11	60.2
European	rs7327867	G	A	0.474	0.0199	0.0014	1.4E-34	202.1
European	rs208432	C	T	0.386	0.0107	0.0014	1.3E-10	55.4
European	rs17532371	G	C	0.071	-0.0194	0.0027	7.3E-10	50.9
European	rs9592980	G	A	0.415	-0.0095	0.0014	8.0E-09	44.7
European	rs7330899	A	G	0.244	0.0143	0.0016	1.8E-14	79.0
European	rs551473284	T	C	0.366	-0.0152	0.0017	3.4E-15	83.3
European	rs6602909	C	T	0.330	0.0212	0.0015	1.3E-33	196.1
European	rs12016920	C	T	0.193	-0.0172	0.0018	2.0E-16	90.8
European	rs11621792	T	C	0.449	0.0220	0.0014	1.6E-40	238.6
European	rs11846704	T	C	0.267	-0.0138	0.0016	3.4E-14	77.2
European	rs17101394	A	G	0.160	0.0154	0.0019	3.4E-12	65.1
European	rs7157399	T	C	0.140	-0.0254	0.0020	8.8E-28	160.3
European	rs13379043	C	T	0.271	-0.0165	0.0016	9.1E-20	111.2
European	rs34752362	A	G	0.443	-0.0096	0.0014	3.9E-09	46.6
European	rs17776811	A	C	0.397	0.0094	0.0014	1.2E-08	43.6
European	rs28929474	T	C	0.018	0.0528	0.0052	1.6E-18	103.6
European	rs17580	A	T	0.039	0.0498	0.0036	1.3E-32	189.9
European	rs28375625	A	C	0.461	-0.0091	0.0014	2.4E-08	41.9
European	rs79391862	C	A	0.020	-0.0639	0.0053	3.8E-25	144.2
European	rs148086620	G	A	0.042	0.0297	0.0035	4.6E-13	70.3
European	rs686958	T	A	0.181	0.0115	0.0018	4.0E-08	40.5
European	rs11636087	C	T	0.298	0.0144	0.0015	9.5E-16	86.7
European	rs12917376	C	T	0.423	-0.0126	0.0014	2.2E-14	78.3
European	rs8029797	A	T	0.313	-0.0095	0.0015	4.0E-08	40.5
European	rs12445804	A	G	0.076	0.0326	0.0027	1.0E-25	147.7
European	rs35468353	G	A	0.377	0.0119	0.0014	7.8E-13	68.9
European	rs247617	A	C	0.321	-0.0367	0.0015	3.5E-101	612.5
European	rs4788817	C	T	0.378	0.0118	0.0014	2.3E-12	66.1
European	rs34042070	G	C	0.191	0.0573	0.0018	8.5E-173	1054.8
European	rs7202323	G	T	0.228	-0.0229	0.0017	1.8E-32	189.1
European	rs7404072	C	T	0.286	-0.0103	0.0016	1.0E-08	44.0
European	rs67890964	C	T	0.381	-0.0183	0.0015	1.3E-26	153.2

European	rs539705186	G	T	0.083	0.0209	0.0030	3.0E-09	47.3
European	rs55714927	T	C	0.189	-0.0349	0.0018	8.3E-61	363.5
European	rs150688657	A	G	0.103	0.0216	0.0023	9.3E-16	86.7
European	rs28811342	C	T	0.197	0.0126	0.0017	5.5E-10	51.7
European	rs704	A	G	0.477	0.0189	0.0014	1.0E-31	184.5
European	rs117765227	T	C	0.029	-0.0311	0.0042	1.0E-10	56.1
European	rs62070652	T	C	0.266	0.0134	0.0016	2.0E-13	72.5
European	rs525767	A	G	0.346	0.0098	0.0015	7.2E-09	45.0
European	rs12943633	T	C	0.081	-0.0178	0.0026	2.0E-09	48.4
European	rs12949918	C	T	0.427	0.0089	0.0014	4.2E-08	40.4
European	rs72836561	T	C	0.030	-0.0298	0.0040	2.1E-10	54.2
European	rs12603290	T	C	0.495	0.0268	0.0014	4.1E-58	346.9
European	rs1292069	C	T	0.454	-0.0098	0.0014	1.4E-09	49.2
European	rs1801689	C	A	0.026	0.0908	0.0043	1.5E-74	448.3
European	rs78186330	A	G	0.208	0.0163	0.0018	1.4E-15	85.6
European	rs77542162	G	A	0.020	0.1831	0.0051	4.8E-212	1297.3
European	rs72631343	G	C	0.130	-0.0439	0.0021	3.7E-75	452.0
European	rs2125345	C	T	0.292	-0.0167	0.0015	4.0E-21	119.5
European	rs12451056	T	C	0.144	-0.0189	0.0020	9.8E-17	92.7
European	rs2840354	T	C	0.191	0.0116	0.0018	2.0E-08	42.3
European	rs77960347	G	A	0.013	0.0699	0.0062	2.2E-22	127.3
European	rs10438978	T	C	0.180	-0.0178	0.0018	2.9E-17	95.9
European	rs12968116	T	C	0.126	0.0142	0.0021	4.9E-09	46.0
European	rs1135908	T	G	0.146	0.0131	0.0020	2.0E-08	42.4
European	rs4807570	A	G	0.210	-0.0115	0.0017	5.8E-09	45.5
European	rs112313064	C	T	0.370	0.0099	0.0016	3.6E-08	40.8
European	rs1808664	G	A	0.394	0.0236	0.0014	5.3E-45	266.2
European	rs73015007	A	G	0.241	-0.0757	0.0016	<4.9E-324	2127.3
European	rs11670740	G	A	0.234	-0.0266	0.0017	2.0E-43	256.5
European	rs440677	G	A	0.381	0.0209	0.0015	5.5E-35	204.5
European	rs62120366	A	C	0.350	0.0096	0.0015	1.4E-08	43.3
European	rs150057262	G	C	0.011	-0.1627	0.0073	7.1E-82	493.4
European	rs17217098	A	G	0.067	-0.0984	0.0028	7.0E-204	1246.9
European	rs147791730	A	G	0.028	-0.0291	0.0042	1.9E-09	48.5
European	rs78242215	A	G	0.056	-0.0207	0.0030	4.2E-09	46.4
European	rs62119267	C	A	0.021	-0.2248	0.0049	<4.9E-324	2082.2

European	rs531660643	T	G	0.019	-0.3927	0.0057	<4.9E-324	4799.6
European	rs140365836	A	G	0.006	0.1277	0.0125	1.2E-18	104.4
European	rs10426226	A	G	0.042	-0.0311	0.0035	3.2E-14	77.4
European	rs113330691	A	G	0.034	-0.2232	0.0038	<4.9E-324	3405.3
European	rs148601586	G	C	0.012	0.1617	0.0067	7.0E-97	586.0
European	rs41289514	G	A	0.010	0.2509	0.0071	7.8E-204	1246.6
European	rs72654437	A	G	0.030	0.0626	0.0045	6.6E-33	191.8
European	rs12691088	A	G	0.026	0.1779	0.0047	3.5E-231	1415.6
European	rs150554721	T	C	0.019	-0.0384	0.0054	8.5E-10	50.6
European	rs4803818	T	C	0.025	0.0291	0.0045	2.9E-08	41.3
European	rs2617801	C	G	0.401	0.0215	0.0015	3.9E-36	211.6
European	rs144794875	G	A	0.142	-0.0177	0.0023	3.2E-11	59.1
European	rs35081008	T	C	0.155	-0.0309	0.0019	2.9E-43	255.5
European	rs11673465	C	T	0.210	0.0163	0.0017	7.0E-16	87.5
European	rs73075609	T	C	0.024	0.0479	0.0048	3.3E-18	101.7
European	rs969075	T	C	0.335	-0.0147	0.0015	2.2E-17	96.6
European	rs2618566	G	T	0.339	0.0402	0.0015	1.1E-116	708.2
European	rs1044573	G	A	0.495	0.0103	0.0014	3.1E-10	53.2
European	rs224424	G	A	0.215	-0.0235	0.0017	3.3E-33	193.6
European	rs1883711	C	G	0.032	0.1308	0.0042	6.3E-161	981.5
European	rs35570186	A	G	0.038	0.0264	0.0039	7.0E-09	45.0
European	rs6093446	A	G	0.275	0.0242	0.0016	8.3E-41	240.3
European	rs1800961	T	C	0.034	-0.0549	0.0039	7.6E-35	203.7
European	rs389877	G	C	0.191	-0.0122	0.0018	8.0E-09	44.7
European	rs1569750	G	A	0.306	0.0113	0.0015	2.2E-10	54.1
European	rs6022851	T	C	0.446	0.0116	0.0014	2.3E-12	66.1
European	rs117590445	T	C	0.016	-0.0379	0.0059	2.6E-08	41.6
European	rs2257885	A	G	0.247	0.0123	0.0016	6.6E-11	57.3
European	rs6090040	A	C	0.483	0.0143	0.0015	4.8E-17	94.6
European	rs73147887	G	C	0.212	0.0159	0.0018	1.9E-14	78.7
European	rs12106385	A	T	0.019	-0.0364	0.0055	1.2E-08	43.6
European	rs112244600	T	C	0.051	0.0301	0.0036	3.1E-13	71.4
European	rs1963676	C	T	0.424	-0.0144	0.0014	4.2E-18	101.1
European	rs5746498	C	T	0.238	0.0133	0.0017	1.4E-11	61.4
European	rs8139142	C	T	0.200	-0.0135	0.0020	7.9E-09	44.7
European	rs5752963	A	G	0.037	0.0268	0.0037	2.7E-10	53.6

European	rs5755688	A	G	0.359	0.0137	0.0015	5.6E-16	88.1
European	rs138352	T	G	0.346	0.0138	0.0015	7.6E-16	87.3
European	rs9615108	C	G	0.387	-0.0098	0.0014	5.6E-09	45.6
European	rs13268	G	A	0.024	-0.0380	0.0045	4.4E-13	70.4
East Asian	rs151193009	T	C	0.009	-0.4860	0.0333	2.3E-44	212.7
East Asian	rs72911441	G	A	0.054	0.0773	0.0111	2.5E-11	48.5
East Asian	rs6663252	C	T	0.120	-0.0751	0.0078	3.5E-20	92.2
East Asian	rs602633	T	G	0.066	-0.1919	0.0104	2.4E-69	337.6
East Asian	rs2642438	A	G	0.177	-0.0509	0.0068	8.9E-13	55.7
East Asian	rs11320208	A	C	0.256	-0.0402	0.0057	1.4E-11	49.8
East Asian	rs13306194	A	G	0.114	-0.1235	0.0079	8.6E-51	244.8
East Asian	rs62133263	C	G	0.076	0.0696	0.0095	2.0E-12	53.9
East Asian	rs2539981	T	C	0.328	-0.0373	0.0055	7.6E-11	46.2
East Asian	rs6741916	T	A	0.271	-0.0414	0.0063	3.8E-10	42.7
East Asian	rs3752442	G	A	0.453	-0.0330	0.0054	4.7E-09	37.4
East Asian	rs6453131	T	G	0.498	-0.0815	0.0050	4.3E-55	266.3
East Asian	rs6874202	T	C	0.253	-0.0557	0.0058	2.3E-20	93.2
East Asian	rs9376090	C	T	0.280	-0.0398	0.0057	2.6E-11	48.4
East Asian	rs73596816	A	G	0.032	0.1160	0.0141	2.8E-15	68.0
East Asian	rs188951644	A	T	0.003	0.3689	0.0506	2.8E-12	53.2
East Asian	rs7789194	T	C	0.421	0.0430	0.0055	9.3E-14	60.5
East Asian	rs2054345	C	T	0.012	-0.1352	0.0236	4.2E-08	32.7
East Asian	rs112784971	T	C	0.244	-0.0363	0.0059	2.8E-09	38.5
East Asian	rs2954027	T	A	0.451	0.0432	0.0051	3.5E-16	72.4
East Asian	rs1883025	T	C	0.234	-0.0397	0.0059	9.8E-11	45.6
East Asian	rs59857465	A	G	0.076	0.0563	0.0098	3.9E-08	32.9
East Asian	rs2519093	T	C	0.216	0.0860	0.0060	1.1E-42	204.3
East Asian	rs7898735	C	T	0.238	-0.0578	0.0061	1.8E-19	88.8
East Asian	rs2419607	G	T	0.403	-0.0366	0.0052	1.0E-11	50.4
East Asian	rs11601507	A	C	0.084	0.0597	0.0093	6.8E-10	41.5
East Asian	rs174559	A	G	0.410	-0.0358	0.0056	8.9E-10	40.9
East Asian	rs59379014	T	C	0.094	0.0538	0.0088	5.0E-09	37.3
East Asian	rs12229026	C	T	0.282	0.0347	0.0057	6.0E-09	36.9
East Asian	rs4646776	C	G	0.195	0.0390	0.0064	6.4E-09	36.7
East Asian	rs11571836	G	A	0.376	-0.0429	0.0052	4.4E-15	67.0
East Asian	rs7140110	C	T	0.217	0.0430	0.0067	9.9E-10	40.7

East Asian	rs6493583	G	C	0.174	-0.0410	0.0069	1.6E-08	34.8
East Asian	rs77303550	T	C	0.244	-0.0895	0.0064	5.3E-41	195.9
East Asian	rs7212349	T	C	0.274	-0.0340	0.0058	1.4E-08	35.0
East Asian	rs62074055	C	G	0.332	0.0382	0.0055	2.6E-11	48.4
East Asian	rs12162136	G	A	0.400	0.0341	0.0051	1.4E-10	44.9
East Asian	rs2738464	G	C	0.283	-0.1080	0.0059	8.3E-68	329.9
East Asian	rs737337	C	T	0.265	-0.0619	0.0059	5.0E-24	111.3
East Asian	rs11668738	G	T	0.421	-0.0445	0.0060	1.7E-12	54.2
East Asian	rs7254892	A	G	0.053	-0.5976	0.0126	<4.9E-324	2241.5
East Asian	rs187976859	C	A	0.005	-0.3052	0.0400	2.6E-13	58.3
East Asian	rs5758600	T	G	0.433	0.0439	0.0057	1.2E-13	59.9

LDL, low-density lipoprotein.

Supplemental Table 5. Variance in plasma LDL-cholesterol explained by SNPs for each therapy and plasma LDL-cholesterol in people of European and East Asian ancestry.

Ancestry	Exposure	Gene	Number of SNPs	Variance explained
European	Statins	<i>HMGCR</i>	21	0.5%
European	PCSK9 inhibitors	<i>PCSK9</i>	33	1.5%
European	Ezetimibe	<i>NPC1L1</i>	6	0.1%
European	Targeting LDL receptors	<i>LDLR</i>	42	2.4%
European	Mipomersen	<i>APOB</i>	25	1.7%
European	Targeting ABCG5/8	<i>ABCG5/8</i>	25	0.7%
European	Plasma LDL-cholesterol	Across the genome	324	8.7%
East Asian	Statins	<i>HMGCR</i>	5	0.6%
East Asian	PCSK9 inhibitors	<i>PCSK9</i>	7	0.9%
East Asian	Targeting LDL receptors	<i>LDLR</i>	9	1.2%
East Asian	Mipomersen	<i>APOB</i>	5	0.6%
East Asian	Plasma LDL-cholesterol	Across the genome	43	8.6%

ABCG5/8, adenosine triphosphate (ATP)-binding cassette transporters G5/8; LDL, low-density lipoprotein; PCSK9, proprotein convertase subtilisin/kexin type 9.

Supplemental Table 6. SNPs associated with common confounders at genome-wide significant level (p value $<5.0E-8$) in PhenoScanner.

SNP	Trait	Author	Study/PMID	Ancestry	P value
rs11499828	Alcohol intake frequency	Neale B	UK Biobank	European	3.8E-17
rs174547	Average weekly champagne plus white wine intake	Neale B	UK Biobank	European	2.6E-08
rs3184504	Past tobacco smoking	Neale B	UK Biobank	European	5.5E-11
rs3184504	Smoking status: previous	Neale B	UK Biobank	European	6.2E-10
rs4646776	Alcohol consumption	Yang X	23364009	East Asian	5.2E-35

Supplemental Table 7. Colocalization estimates for each posterior probability using prior probabilities 1.0E-4 for a variant associated with plasma LDL-cholesterol, 1.0E-4 for a variant associated with gallstone disease, and 1.0E-5 for a variant associated with both traits in or near (+/-100kb) the target gene of each therapy.

Therapy	Gene	Biobank	SNPs	H ₀	H ₁	H ₂	H ₃	H ₄	Conditional H ₄
Statins	<i>HMGCR</i>	FinnGen	877	<0.001	0.001	<0.001	0.012	0.987	0.988
PCSK9 inhibitors	<i>PCSK9</i>	UK Biobank	1298	<0.001	0.912	<0.001	0.057	0.031	0.352
Mipomersen	<i>APOB</i>	UK Biobank	1085	<0.001	0.504	<0.001	0.447	0.049	0.099
Mipomersen	<i>APOB</i>	FinnGen	930	<0.001	0.944	<0.001	0.042	0.014	0.247
Targeting ABCG5/8	<i>ABCG5/8</i>	UK Biobank	1862	<0.001	<0.001	<0.001	>0.999	<0.001	<0.001
Targeting ABCG5/8	<i>ABCG5/8</i>	FinnGen	1389	<0.001	<0.001	<0.001	>0.999	<0.001	<0.001

ABCG5/8, adenosine triphosphate (ATP)-binding cassette transporters G5/8; LDL, low-density lipoprotein; PCSK9, proprotein convertase subtilisin/kexin type 9. H₀, no association with either trait; H₁, association with plasma LDL-cholesterol only; H₂, association with gallstone disease only; H₃, associations of two independent variants and one for each trait; H₄, associations of one shared variant with both traits; conditional H₄, associations of one shared variant with both traits conditional on the presence of a variant associated with gallstone disease ($H_4/(H_2+H_3+H_4)$).

Supplemental Table 8. Cluster-specific SNPs with inclusion probability >0.80 in the UK Biobank and FinnGen.

Cluster	Number of overlapping SNPs	Number of SNPs in UK Biobank cluster only	Number of SNPs in FinnGen cluster only	Overlapping SNPs	SNPs in UK Biobank cluster only	SNPs in FinnGen cluster only
Cluster1	3	2	3	rs1497406: rs1896995: rs9297994	rs2257885: rs2617801	rs13108218: rs17580: rs352942
Cluster2	4	12	6	rs11167778: rs2519093: rs3010275: rs67890964	rs11621792: rs11670740: rs12533280: rs13108218: rs13379043: rs17580: rs1801689: rs2642438: rs440677: rs7300192: rs7904973: rs9837622	rs10272002: rs114165349: rs1423527: rs2125345: rs2617801: rs4671050
Cluster3	11	21	1	rs10455872: rs113330691: rs12691088: rs35271870: rs35358959: rs41289514: rs531660643: rs62119267: rs62122481: rs693668: rs9987289	rs11206517: rs11591147: rs11601507: rs117733303: rs11787335: rs12208357: rs12603290: rs12657266: rs13076933: rs17050272: rs17217098: rs1808664: rs247617: rs34042070: rs34707604: rs553427: rs6689: rs71311871: rs73015007: rs77542162: rs9399137	rs72631343

Cluster4	4	1	17	rs10903129: rs174547: rs2618566: rs28601761	rs55714927	rs1057868: rs11673465: rs1169288: rs12445804: rs12917376: rs138204164: rs1556857: rs2391159: rs267733: rs2706381: rs35081008: rs4390169: rs5752963: rs603424: rs6792725: rs799157: rs9496567
Cluster5	3	1	1	rs12968116: rs1800961: rs6741740	rs185263492	rs2374569

Supplemental Table 9. KEGG and Reactome pathways related to the mapped genes for cluster-specific variants predicting plasma LDL-cholesterol (inclusion probability >0.80).

Biobank	Cluster	Category	Pathway	Number of genes of the pathway	Number of input genes overlapping with genes of the pathway	Input genes overlapping with genes of the pathway	<i>P</i> value	Adjusted <i>p</i> value
FinnGen	Cluster2	KEGG	Glycosphingolipid biosynthesis globo series	14	3	<i>FUT2:FUT1:GBGT1</i>	3.0E-05	5.5E-03
FinnGen	Cluster3	KEGG	ABC transporters	42	4	<i>ABCA9:ABCA6:ABCA10:ABCA5</i>	3.1E-06	5.7E-04
FinnGen	Cluster3	Reactome	Transport of small molecules	721	14	<i>BSND:PCSK9:PSMA5:ABCA9:A BCA6:ABCA10:ABCA5:APOE:A POC1:APOC4:APOC2:SLC22A2 :SLC22A3:LPA</i>	8.0E-10	1.2E-06
FinnGen	Cluster3	Reactome	Plasma lipoprotein assembly remodeling and clearance	71	6	<i>PCSK9:APOE:APOC1:APOC4:A POC2:LPA</i>	1.7E-08	1.3E-05
FinnGen	Cluster3	Reactome	ABC transporters in lipid homeostasis	18	4	<i>ABCA9:ABCA6:ABCA10:ABCA5</i>	8.7E-08	4.1E-05
FinnGen	Cluster3	Reactome	Plasma lipoprotein assembly	19	4	<i>APOE:APOC1:APOC4:APOC2</i>	1.1E-07	4.1E-05
FinnGen	Cluster3	Reactome	Plasma lipoprotein clearance	33	4	<i>PCSK9:APOE:APOC1:APOC4</i>	1.1E-06	3.4E-04

FinnGen	Cluster3	Reactome	ABC family proteins mediated transport	99	5	<i>PSMA5:ABCA9:ABCA6:ABCA10:ABCA5</i>	3.9E-06	9.7E-04
FinnGen	Cluster3	Reactome	Abacavir transmembrane transport	5	2	<i>SLC22A2:SLC22A3</i>	5.6E-05	1.0E-02
FinnGen	Cluster3	Reactome	VLDL assembly	5	2	<i>APOC1:APOC4</i>	5.6E-05	1.0E-02
FinnGen	Cluster3	Reactome	Plasma lipoprotein remodeling	32	3	<i>APOE:APOC2:LPA</i>	6.1E-05	1.0E-02
FinnGen	Cluster3	Reactome	VLDL clearance	6	2	<i>APOC1:APOC4</i>	8.4E-05	1.3E-02
FinnGen	Cluster3	Reactome	Abacavir transport and metabolism	10	2	<i>SLC22A2:SLC22A3</i>	2.5E-04	2.5E-02
FinnGen	Cluster3	Reactome	Organic cation transport	10	2	<i>SLC22A2:SLC22A3</i>	2.5E-04	2.5E-02
FinnGen	Cluster3	Reactome	Chylomicron assembly	10	2	<i>APOE:APOC2</i>	2.5E-04	2.5E-02
FinnGen	Cluster3	Reactome	Chylomicron remodeling	10	2	<i>APOE:APOC2</i>	2.5E-04	2.5E-02
FinnGen	Cluster3	Reactome	HDL remodeling	10	2	<i>APOE:APOC2</i>	2.5E-04	2.5E-02
UK Biobank	Cluster3	Reactome	Plasma lipoprotein assembly remodeling and clearance	71	7	<i>PCSK9:CETP:APOE:APOC1:APOC4:APOC2:LPA</i>	2.3E-06	3.5E-03
UK Biobank	Cluster3	Reactome	Abacavir transmembrane transport	5	3	<i>SLC22A1:SLC22A2:SLC22A3</i>	5.9E-06	4.4E-03

UK Biobank	Cluster3	Reactome	Transport of small molecules	721	19	<i>BSND:PCSK9:PSMA5:SLC12A3:CETP:ABCA9:ABCA6:ABCA10:ABCA5:SLC44A2:ATP13A1:APOE:APOC1:APOC4:APOC2:SLC22A1:SLC22A2:SLC22A3:LPA</i>	1.2E-05	5.2E-03
UK Biobank	Cluster3	Reactome	ABC transporters in lipid homeostasis	18	4	<i>ABCA9:ABCA6:ABCA10:ABCA5</i>	1.4E-05	5.2E-03
UK Biobank	Cluster3	Reactome	Plasma lipoprotein assembly	19	4	<i>APOE:APOC1:APOC4:APOC2</i>	1.7E-05	5.2E-03
UK Biobank	Cluster3	Reactome	Abacavir transport and metabolism	10	3	<i>SLC22A1:SLC22A2:SLC22A3</i>	6.8E-05	1.3E-02
UK Biobank	Cluster3	Reactome	Organic cation transport	10	3	<i>SLC22A1:SLC22A2:SLC22A3</i>	6.8E-05	1.3E-02
UK Biobank	Cluster3	Reactome	HDL remodeling	10	3	<i>CETP:APOE:APOC2</i>	6.8E-05	1.3E-02
UK Biobank	Cluster3	Reactome	Plasma lipoprotein remodeling	32	4	<i>CETP:APOE:APOC2:LPA</i>	1.5E-04	2.5E-02
UK Biobank	Cluster3	Reactome	Plasma lipoprotein clearance	33	4	<i>PCSK9:APOE:APOC1:APOC4</i>	1.7E-04	2.5E-02
UK Biobank	Cluster3	Reactome	Organic cation anion zwitterion transport	15	3	<i>SLC22A1:SLC22A2:SLC22A3</i>	2.5E-04	3.4E-02
Biobank Japan	Cluster2	Reactome	Plasma lipoprotein assembly remodeling and clearance	71	10	<i>PCSK9:LDLR:C19orf80:APOE:APOC1:APOC4:APOC2:APOB:LP A:ABCA1</i>	1.2E-10	1.8E-07

Biobank Japan	Cluster2	Reactome	Plasma lipoprotein assembly	19	6	<i>APOE:APOC1:APOC4:APOC2:APOB:ABCA1</i>	3.9E-09	2.9E-06
Biobank Japan	Cluster2	Reactome	Plasma lipoprotein clearance	33	6	<i>PCSK9:LDLR:APOE:APOC1:APOC4:APOB</i>	1.5E-07	7.3E-05
Biobank Japan	Cluster2	Reactome	Transport of small molecules	721	19	<i>BSND:PCSK9:MICU1:MCU:BES T1:FTH1:SLC44A2:LDLR:C19orf80:APOE:APOC1:APOC4:APOC2:APOB:ADD1:SLC22A3:LPA:ABCA1:SLC44A1</i>	1.8E-06	6.8E-04
Biobank Japan	Cluster2	Reactome	Plasma lipoprotein remodeling	32	5	<i>C19orf80:APOE:APOC2:APOB:LPA</i>	3.7E-06	8.6E-04
Biobank Japan	Cluster2	Reactome	VLDL assembly	5	3	<i>APOC1:APOC4:APOB</i>	4.0E-06	8.6E-04
Biobank Japan	Cluster2	Reactome	Chylomicron clearance	5	3	<i>LDLR:APOE:APOB</i>	4.0E-06	8.6E-04
Biobank Japan	Cluster2	Reactome	VLDL clearance	6	3	<i>APOC1:APOC4:APOB</i>	8.0E-06	1.5E-03
Biobank Japan	Cluster2	Reactome	Chylomicron assembly	10	3	<i>APOE:APOC2:APOB</i>	4.7E-05	7.1E-03
Biobank Japan	Cluster2	Reactome	Chylomicron remodeling	10	3	<i>APOE:APOC2:APOB</i>	4.7E-05	7.1E-03
Biobank Japan	Cluster2	Reactome	Visual phototransduction	99	6	<i>GRK1:LDLR:APOE:APOC2:APOB:GRK4</i>	9.9E-05	1.4E-02
Biobank Japan	Cluster2	Reactome	Regulation of IGF transport and uptake by IGFBPs	123	6	<i>PCSK9:TMEM132A:GAS6:APOE:APOB:PLG</i>	3.2E-04	3.9E-02

Biobank Japan	Cluster2	Reactome	Scavenging by class A receptors	19	3	<i>FTH1:APOE:APOB</i>	3.6E-04	3.9E-02
Biobank Japan	Cluster2	Reactome	LDL clearance	19	3	<i>PCSK9:LDLR:APOB</i>	3.6E-04	3.9E-02
Biobank Japan	Cluster2	Reactome	Metabolism of fat soluble vitamins	47	4	<i>LDLR:APOE:APOC2:APOB</i>	4.2E-04	4.1E-02

ABC, adenosine triphosphate (ATP)-binding cassette transporters; HDL, high-density lipoprotein; IGF, insulin-like growth factor; IGFbps, insulin-like growth factor-binding proteins; LDL, low-density lipoprotein; VLDL, very-low-density lipoprotein.