

Online Supplement: Table of Contents

eTables

eTable 1: Variable definitions and sources

eTable 2: ICD-10 diagnosis codes by non-invasive respiratory support mode

eTable 3: Sensitivity analysis including patients with early cross-over between non-invasive respiratory support modalities and early discontinuation of HFNC or NIV

eTable 4: Sensitivity analysis: Alternative approaches to Win Ratio calculations

eFigures

eFigure 1. Logistic regression model used to calculate the propensity score for odds of treatment with non-invasive ventilation

eFigure 2. Covariate balance after propensity score matching

eFigure 3. Hourly respiratory support from non-invasive respiratory support initiation through hour 72, in the overall and matched cohorts

eFigure 4. Daily status plot from emergency department arrival through day 28, in the overall and matched cohorts

eFigure 5. Kaplan-Meier survival curves for 28-day survival and time to intubation, in the overall and matched cohorts

eTable 1. Variable definitions and sources		
Variable	Definition	Source
Adult ED encounter	Any hospital encounter beginning in the adult emergency department	Clarity - ED Datamart
6 L/min or more oxygen flow rate in ED	Any flowsheet recording of 6L/min of oxygen flow or higher via any respiratory support device prior to leaving ED	Caboodle - Flowsheets
Mechanical vent w/o NIRS	Receipt of invasive mechanical ventilation without first having received NIRS	Caboodle - Flowsheets
NIRS in first 24 hours	Any heated high-flow nasal cannula or non-invasive ventilation support in first 24 hours from ED arrival	Caboodle - Flowsheets
Chronic assisted ventilation	Any encounter with respiratory therapy documentation for chronic assisted ventilation or ventilator mode used for chronic assisted ventilation at our institution (AVAPS).	Clarity - ED Datamart
Tracheostomy patient	Any encounter with flowsheet (lines/drains/airways or tracheostomy care) documentation during first hospital day	Caboodle - Flowsheets
NIRS post-extubation only	Any occurrence of NIRS documentation that occurred only after invasive mechanical ventilation	Caboodle - Flowsheets
Covid-19 positive	Covid-19 positive by institutional guidelines (positive test or physician's documentation of an outside positive test within 21 days prior to start of encounter)	Clarity - ED Datamart
Age	Age in years at the start of the encounter	Clarity - ED Datamart
Sex at birth	Sex at birth	Clarity - ED Datamart
Body mass index	Weight in kg divided by cm ² using the median weight of the encounter	Clarity - ED Datamart
Charlson comorbidity index	Standard Charlson Comorbidity Index using the technique described in Quan et al. (Am J Epi 2011)	Clarity - ED Datamart
Congestive heart failure	ICD-10 codes: I42.x, I43.x, I50.x	Clarity - ED Datamart
Chronic obstructive pulmonary disease	ICD-10 codes: J40.x-J47.x, J60.x-J67.x, J68.4, J70.1, J70.3	Clarity - ED Datamart
Obstructive sleep apnea	ICD-10 codes: G47.3	Clarity - ED Datamart
Expected pCO ₂	Calculated using the first available bicarbonate from basic metabolic panel and pCO ₂ from arterial or venous blood gas, comparing actual pCO ₂ to pCO ₂ that would be expected based on Winter's formula	Clarity - ED Datamart
First hour of NIRS	First hour of any NIRS, either HFNC or NIV	Caboodle - Flowsheets
Systolic shock index	Heart rate (beats per minute) divided by systolic blood pressure (mmHg)	Clarity - ED Datamart
Lactate	Serum lactate measured by any means (blood gas, separate lab assay, or point-of-care)	Clarity - ED Datamart
Glasgow coma scale	Standard total GCS obtained by nursing	Caboodle - Flowsheets
Highest day 1 SOFA	Highest total sequential organ failure assessment score measured in the first 24 hours from ED arrival	Clarity - ED Datamart
28-day mortality	Deceased at the end of the 28th day from ED arrival. Includes out of hospital deaths after discharge.	Clarity - ED Datamart

Time to death (28-days)	Time in days from ED arrival to death censored at 28 days	Clarity - ED Datamart
In-hospital mortality	Deceased at discharge from hospital	Clarity - ED Datamart
Time to death (in-hospital)	Time in days from ED arrival to death censored at hospital discharge	Clarity - ED Datamart
Ventilator-free days	Number of days free of invasive mechanical ventilation in the first 28 days from ED arrival. If deceased within 28 days then ventilator-free days = 0.	Clarity - ED Datamart
Non-invasive respiratory support hours	Total hours of either NIV or HFNC from initiation through hour 72.	Caboodle - Flowsheets
Sepsis	ICD-10 codes: A02.1, A20.7, A22.7, A26.7, A32.7, A39.2, A39.3, A39.4, A40.0, A40.1, A40.3, A40.8, A40.9, A41.01, A41.02, A41.1, A41.2, A41.3, A41.4, A41.50, A41.51, A41.52, A41.53, A41.59, A41.81, A41.89, A41.9, A42.7, A54.86, B00.7, B37.7, I76., O03.37, O03.87, O04.87, O07.37, O08.82, O85., O86.04, P36.0, P36.10, P36.19, P36.2, P36.30, P36.39, P36.4, P36.5, P36.8, P36.9, R65.20, R65.21, T81.12XA, T81.44XA	Clarity - ED Datamart
Pneumonia	ICD-10 codes: A01.03, A02.22, A20.2, A21.2, A22.1, A31.0, A37.01, A37.11, A37.81, A37.91, A43.0, A48.1, A50.04, A52.72, A54.84, B01.2, B05.2, B06.81, B25.0, B37.1, B38.0, B38.1, B38.2, B39.0, B39.1, B39.2, B58.3, B59., B77.81, J09.X1, J10.00, J10.01, J10.08, J11.00, J11.08, J12.0, J12.1, J12.2, J12.3, J12.81, J12.82, J12.89, J12.9, J13., J14., J15.0, J15.1, J15.20, J15.211, J15.212, J15.29, J15.3, J15.4, J15.5, J15.6, J15.7, J15.8, J15.9, J16.0, J16.8, J17., J18.0, J18.1, J18.8, J18.9, J85.1, J95.851, J09.X1, J09.X2, J09.X3, J09.X9, J10.00, J10.01, J10.08, J10.1, J10.2, J10.81, J10.82, J10.83, J10.89, J11.00, J11.08, J11.1, J11.2, J11.81, J11.82, J11.83, J11.89, J45.20, J45.21, J45.22, J45.30, J45.31, J45.32, J45.40, J45.41, J45.42, J45.50, J45.51, J45.52, J45.901, J45.902, J45.909, J45.990, J45.991, J45.998	Clarity - ED Datamart
Aspiration	ICD-10 codes: J69.0, J69.1, J69.8, J95.4, O29.011, O29.012, O29.013, O29.019, O74.0, O89.01	Clarity - ED Datamart
ARDS	ICD-10 codes: J80	Clarity - ED Datamart
Hypercarbic respiratory failure	ICD-10 codes: J96.02, J96.22, J96.92, J96.12	Clarity - ED Datamart
Respiratory failure, not otherwise specified	ICD-10 codes: J95.821, J95.822, J96.00, J96.01, J96.20, J96.21, J96.90, J96.91, R0.92, J96.10, J96.11	Clarity - ED Datamart
Chronic obstructive pulmonary disease or asthma	ICD-10 codes: J41.0, J41.1, J41.8, J42x, J43.0, J43.1, J43.2, J43.8, J43.9, J44.0, J44.1, J44.9, J45.20, J45.21, J45.22, J45.30, J45.31, J45.32, J45.40, J45.41, J45.42, J45.50, J45.51, J45.52, J459.01, J45.902, J45.909, J45.990, J45.991, J45.998	Clarity - ED Datamart
Volume overload	ICD-10 codes: J81.0, I12.0, I12.9, I13.0, I13.10, I13.11, I13.2, E87.70, E87.71, E87.79, I09.81, I11.0, I13.0, I13.2, I50.1, I50.20, I50.21, I50.22, I50.23, I50.30, I50.31, I50.32, I50.33, I50.40, I50.41, I50.42, I50.43, I50.810, I50.811, I50.812, I50.813, I50.814, I50.82, I50.83, I50.84, I50.89, I50.9, I97.130, I97.131, O29.121, O29.122, O29.123, O29.129, I11.0, I11.9, I12.0, I12.9, I13.0, I13.10, I13.11, I13.2, I15.0, I15.1, I15.2, I15.8, I15.9, I16.0, I16.1, I16.9	Clarity - ED Datamart

eTable 2. ICD-10 diagnosis codes, by non-invasive respiratory support mode				
	Overall Cohort		Matched Cohort	
	HFNC (n=795)	NIV (n=470)	HFNC (n = 368)	NIV (n = 368)
Sepsis	262 (32.9%)	86 (18.3%)	101 (27.4%)	76 (20.7%)
Pneumonia	389 (48.9%)	183 (38.9%)	171 (46.5%)	151 (41.0%)
Aspiration	129 (16.2%)	28 (6.0%)	45 (12.2%)	23 (6.3%)
Acute respiratory distress syndrome	28 (3.5%)	8 (1.7%)	10 (2.7%)	7 (1.9%)
Hypercarbic respiratory failure	111 (14.0%)	226 (48.1%)	75 (20.4%)	159 (43.2%)
Respiratory failure, not otherwise specified	713 (89.7%)	402 (85.5%)	333 (90.5%)	313 (85.1%)
Chronic obstructive pulmonary disease or asthma	276 (34.7%)	246 (52.3%)	150 (40.8%)	184 (50.0%)
Volume overload	430 (54.1%)	367 (78.1%)	239 (64.9%)	276 (75.0%)

eTable 2 Legend. ICD-10 admission codes recorded for the encounter. All respiratory-related ICD-10 codes for each encounter were included, so one encounter could be associated with multiple diagnosis codes. Diagnosis codes were grouped using the Clinical Classifications Software Refined (CCSR), which is made available through the Agency for Healthcare Research and Quality. Accessed 8/17/2023 via https://hcup-us.ahrq.gov/toolssoftware/ccsr/ccs_refined.jsp. Volume overload included diagnoses of volume overload in setting of heart failure, kidney failure, and / or hypertensive emergency.

Definitions: HFNC= high flow nasal cannula, NIV= non-invasive positive pressure ventilation

eTable 3: Sensitivity analysis: Win Ratio based on first non-invasive respiratory support mode

Tiers	Outcome	Overall expanded cohort			Matched expanded cohort		
		NIV wins	HFNC wins	Ties	NIV wins	HFNC wins	Ties
1	Time to death (28-day mortality)	143,064 (23.4%)	89,040 (14.6%)	378,230 (62.0%)	52,535 (21.1%)	37,903 (15.2%)	158,563 (63.7%)
2	Ventilator-free days	76,426 (12.5%)	69,931 (11.5%)	231,873 (40.0%)	28,010 (11.2%)	30,360 (12.2%)	100,193 (40.2%)
3	Non-invasive respiratory support hours	128,786 (21.1%)	92,457 (15.1%)	10,630 (1.7%)	53,697 (21.6%)	41,745 (16.8%)	4,751 (1.9%)
	Totals, by category	348,276 (57.1%)	251,428 (41.2%)	10,630 (1.7%)	134,242 (53.9%)	110,008 (44.2%)	4,751 (1.9%)
	Total possible pairs	610,334			249,001		
	Win Ratio (95% CI), p-value	1.39 (1.23 – 1.56), p-value <0.001			1.22 (1.05 – 1.41), p-value= 0.0079		

eTable 3 Legend.

We performed a sensitivity analysis classifying patients as receiving NIV vs HFNC based on first respiratory support mode, to mimic an intention-to-treat approach. In this analysis, we included patients with early non-invasive respiratory support discontinuation and cross-over (See figure 1). In the dataset, the hourly non-invasive respiratory support mode is the dominant mode (mode used most frequently during the hour). Of 1,615 patients with qualifying non-invasive respiratory support mode for inclusion in this sensitivity analysis, 10 patients received NIV and HFNC equally in hour 1 and a dominant mode could not be determined. These patients were therefore excluded, leaving N=1,595. Using a propensity-score for odds of treatment with NIV, we were able to match 998/1,595 encounters (62.6%: HFNC N=499, NIV N=499). We calculated the Win Ratio for composite Major Adverse Pulmonary Events in both the overall expanded cohort and the expanded cohort after propensity score matching. The Win Ratio is the ratio of overall “wins for NIV” over “wins for HFNC.” A positive Win Ratio suggests NIV results in a better composite outcome than HFNC. See methods, Table 3 and Figure 2 for full descriptions of Win Ratio calculation.

Definitions: HFNC= high flow nasal cannula, NIV= non-invasive positive pressure ventilation, NIRS= non-invasive respiratory support (either HFNC or NIV). Non-invasive respiratory support hours were hours spent on HFNC or NIV calculated from initiation through hour 72.

eTable 4. Sensitivity analysis: Alternative approaches to Win Ratio calculations							
		Overall Cohort			Matched Cohort		
		373,650 total pairs			135,424 total pairs		
A. 28-day mortality, as a survival event (Primary analysis, corresponds to Figure 2)							
Tier	Outcome	NIV wins	HFNC wins	Ties	NIV wins	HFNC wins	Ties
1	Time to death (28 day mortality)	92,713 (24.8%)	51,255 (13.7%)	229,682 (61.5%)	28,232 (20.8%)	21,442 (15.8%)	85,750 (63.3%)
2	Ventilator-free days	45,921 (12.3%)	42,225 (11.3%)	141,536 (37.9%)	13,615 (10.0%)	17,589 (13.0%)	54,546 (40.2%)
3	Non-invasive respiratory support hours	87,343 (23.4%)	48,011 (12.8%)	6,182 (1.7%)	32,161 (23.7%)	19,926 (14.7%)	2,459 (1.8%)
	Totals, by category	225,977 (60.5%)	141,491 (37.9%)	6,182 (1.7%)	74,008 (54.6%)	58,957 (43.5%)	2,459 (1.8%)
	Win Ratio (95% CI), p-value	1.60 (1.39- 1.83), p <0.0001			1.26 (1.06 -1.49), p=0.0092		
B. 28-day mortality, as a binary event							
Tier	Outcome	NIV wins	HFNC wins	Ties	NIV wins	HFNC wins	Ties
1	28-day mortality	85,140 (22.8%)	42,920 (11.5%)	245,590 (65.7%)	25,755 (19.0%)	18,395 (13.6%)	91,274 (67.4%)
2	Ventilator-free days	45,921 (12.3%)	42,225 (11.3%)	157,444 (42.1%)	13,615 (10.1%)	17,589 (13.0%)	60,070 (44.4%)
3	Non-invasive respiratory support hours	87,343 (23.4%)	48,011 (12.8%)	22,090 (5.9%)	32,161 (23.7%)	19,926 (14.7%)	7,983 (5.9%)
	Totals, by category	218,404 (58.5%)	133,156 (35.6%)	22,090 (5.9%)	71,531 (52.8%)	55,910 (41.3%)	7,983 (5.9%)
	Win Ratio (95% CI), p-value	1.64 (1.42-1.89), p <0.0001			1.28 (1.07-1.53), p=0.0066		
C. In-hospital mortality, as a survival event							
Tier	Outcome	NIV wins	HFNC wins	Ties	NIV wins	HFNC wins	Ties
1	Time to death (In-hospital mortality)	44,200 (11.8%)	29,335 (7.9%)	300,115 (80.3%)	12,835 (9.5%)	11,927 (8.8%)	110,662 (81.7%)
2	Ventilator-free days	93,374 (25.0%)	62,052 (16.6%)	144,689 (38.7%)	28,896 (21.3%)	26,182 (19.3%)	55,584 (41.0%)

3	Non-invasive respiratory support hours	88,774 (23.8%)	49,636 (13.3%)	6,279 (1.7%)	32,590 (24.1%)	20,506 (15.1%)	2,488 (1.8%)
	Totals, by category	226,348 (60.6%)	141,023 (37.7%)	6,279 (1.7%)	74,321 (54.9%)	58,615 (43.3%)	2,488 (1.8%)
	Win Ratio (95% CI), p-value	1.61 (1.40- 1.84), p <0.0001			1.27 (1.07 -1.50), p=0.0066		
D. In-hospital mortality as a binary event							
Tier	Outcome	NIV wins	HFNC wins	Ties	NIV wins	HFNC wins	Ties
1	In-hospital mortality	69,628 (18.6%)	36,308 (9.7%)	267,714 (71.6%)	20,288 (15.0%)	15,504 (11.4%)	99,632 (73.6%)
2	Ventilator-free days	64,793 (17.3%)	51,202 (13.7%)	151,719 (40.6%)	20,467 (15.1%)	21,360 (15.8%)	57,805 (42.7%)
3	Non-invasive respiratory support hours	87,462 (23.4%)	48,261 (36.3%)	15,996 (4.3%)	32,115 (23.7%)	19,972 (14.7%)	5,718 (4.2%)
	Totals, by category	221,883 (59.4%)	135,771 (36.3%)	15,996 (4.3%)	72,870 (53.8%)	56,836 (42.0%)	5718 (4.2%)
	Win Ratio (95% CI), p-value	1.63 (1.42- 1.88), p <0.0001			1.28 (1.08 -1.53), p=0.0054		

eTable 4 Legend. Details of alternative approaches used to calculate the Win Ratio for composite Major Adverse Pulmonary Events.

In the primary analysis, 28-day mortality was used as a survival event (Panel A above, Table 3, Figure 2). Mortality as a survival event was chosen given this has been the convention in existing literature on the use of Win Ratio.¹⁷ However, given the clinical significance of longer survival within 28-days is less clear in critical care, in sensitivity analysis, we also calculated the Win Ratio for 28-day mortality as a binary event (Panel B). In this scenario, patients win on mortality only if they lived but their pair died; time to death is not compared. Patients who both died tied on all levels and did not contribute to the final Win Ratio outcome. This approach results in differences on Tier 1 as well as an increased number of total ties. Sensitivity analyses were also performed using in-hospital mortality as both a C) survival and D) binary event.

Given the novelty of the Win Ratio as an outcome, as an exploratory analysis, we calculated the Win Ratio for the overall cohort (N=1,265) and the matched cohort (N=736). Interpretation of the results for the overall cohort is limited given the differences between baseline groups.

Definitions: HFNC= high flow nasal cannula, NIV= non-invasive positive pressure ventilation, NIRS= non-invasive respiratory support (either HFNC or NIV). Non-invasive respiratory support hours were hours spent on HFNC or NIV calculated from initiation through hour 72.

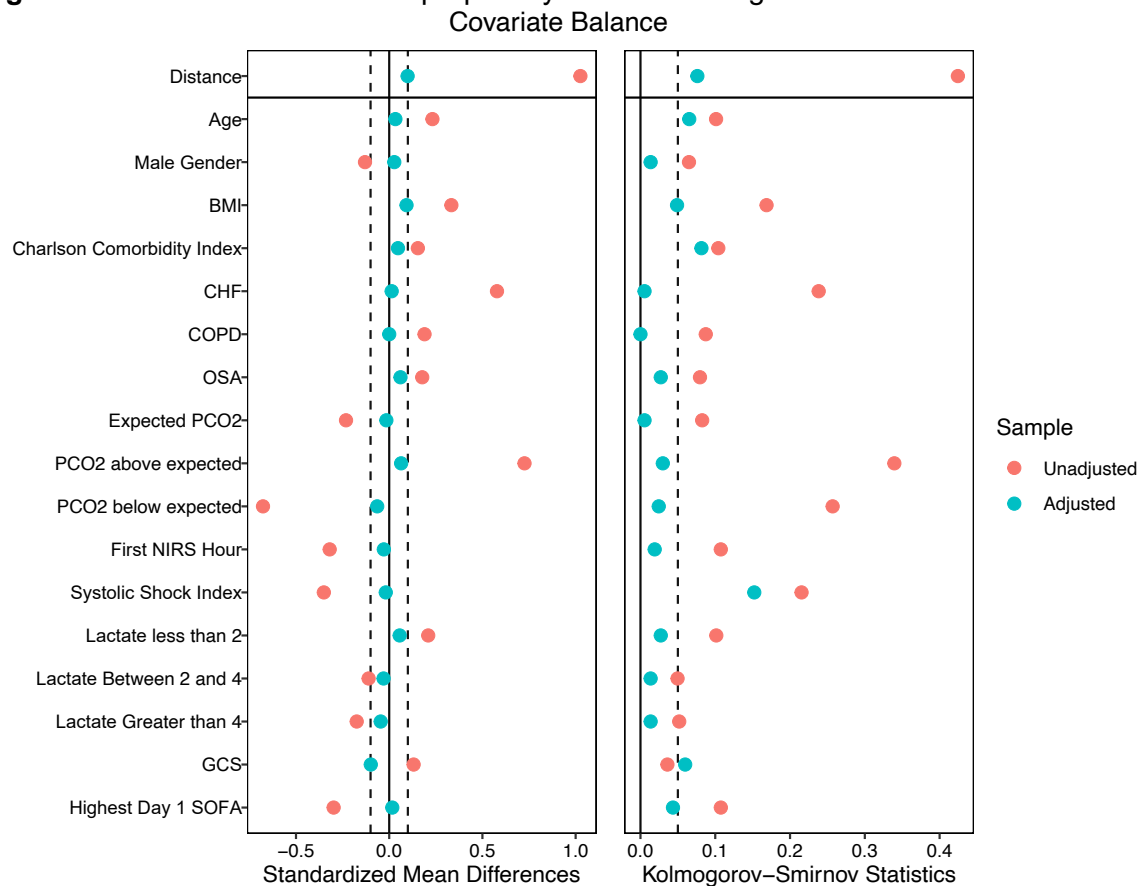
eFigure 1: Logistic regression model used to calculate the propensity score for odds of treatment with non-invasive ventilation

Variable	N	Odds ratio	p
Age, years	1265	1.01 (1.00, 1.02)	0.080
Gender			
F	554	Reference	
M	711	0.91 (0.70, 1.19)	0.500
BMI	1265	1.03 (1.02, 1.05)	<0.001
Charlson Index, Total	1265	1.02 (0.99, 1.04)	0.143
CHF			
No	464	Reference	
Yes	801	2.29 (1.70, 3.11)	<0.001
COPD			
No	457	Reference	
Yes	808	0.95 (0.71, 1.27)	0.722
OSA			
No	973	Reference	
Yes	292	1.02 (0.74, 1.40)	0.900
Winter's			
Expected PCO ₂	254	Reference	
PCO ₂ above expected	586	3.49 (2.48, 4.96)	<0.001
PCO ₂ below expected	425	0.74 (0.50, 1.09)	0.128
Time to first NIRS, hours	1265	0.96 (0.94, 0.99)	0.012
Systolic Shock Index	1265	0.46 (0.26, 0.82)	0.009
Lactate			
Less than 2 mmol/L	708	Reference	
Between 2 and 4	392	0.82 (0.61, 1.11)	0.200
Greater than 4	165	0.61 (0.39, 0.94)	0.027
GCS	1265	1.08 (0.99, 1.19)	0.098
Highest SOFA on day 1	1265	0.91 (0.86, 0.96)	<0.001

eFigure 1 Legend: Logistic regression model used to determine the propensity score for odds of receiving non-invasive ventilation (NIV). N=1,265 patients who met study inclusion criteria and were included in the pool for matching. Odds ratio represents odds of receiving NIV.

Definitions: BMI= body mass index; F= female; M= male; CHF= history of congestive heart failure; COPD= history of chronic obstructive pulmonary disease; OSA= history of obstructed sleep apnea; Expected pCO₂ at, above, or below expected = a comparison of actual pCO₂ on blood gas (venous or arterial) with the expected value as calculated using Winter's Formula and first bicarbonate value off of chemistry panel; Time to first NIRS, hours= hours from hospital arrival to initiation of non-invasive respiratory support (either high-flow nasal canula or non-invasive ventilation); Systolic shock index= ratio of heart rate / systolic blood pressure; GCS= Glasgow Coma Score; SOFA= Sequential Organ Failure Assessment.

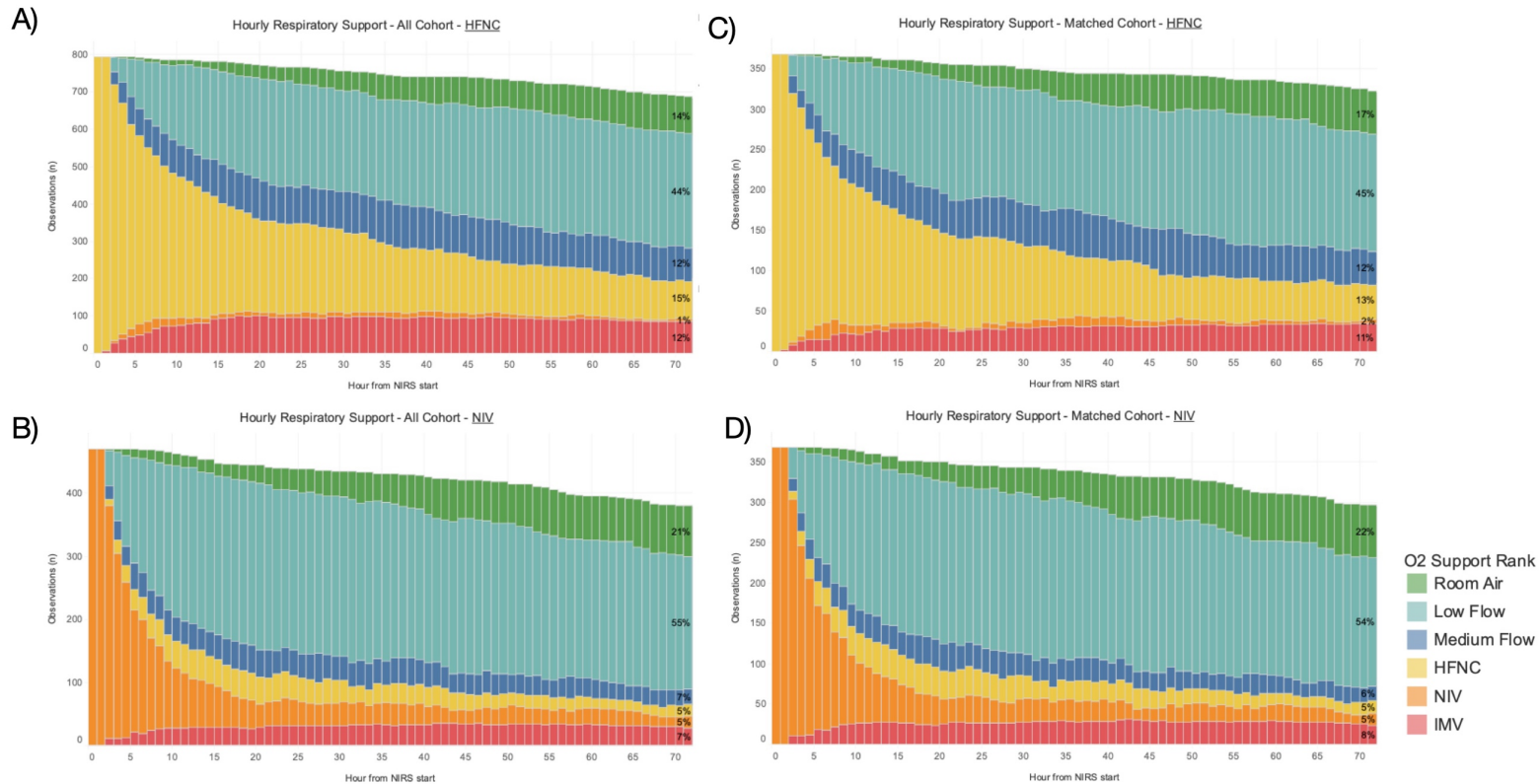
eFigure 2. Covariate balance after propensity-score matching



eFigure 2 Legend: Covariate balance after propensity score matching, displayed as both standardized mean differences and using Kolmogorov-Smirnov statistics. N=736 patients included in the matched cohort (368 in each group)

Definitions: BMI= body mass index; CHF= history of congestive heart failure; COPD= history of chronic obstructive pulmonary disease; OSA= history of obstructed sleep apnea; Expected pCO₂ at, above, or below expected = a comparison of actual pCO₂ on blood gas (venous or arterial) with the expected value as calculated using Winter's Formula and first bicarbonate value off of chemistry panel; First NIRS hour= time from hospital arrival to initiation of non-invasive respiratory support (either high flow nasal canula or non-invasive ventilation); Systolic shock index= ratio of heart rate / systolic blood pressure; GCS= Glasgow Coma Score; SOFA= Sequential Organ Failure Assessment.

eFigure 3. Hourly respiratory support from NIRS start through hour 72, in the overall and matched cohorts

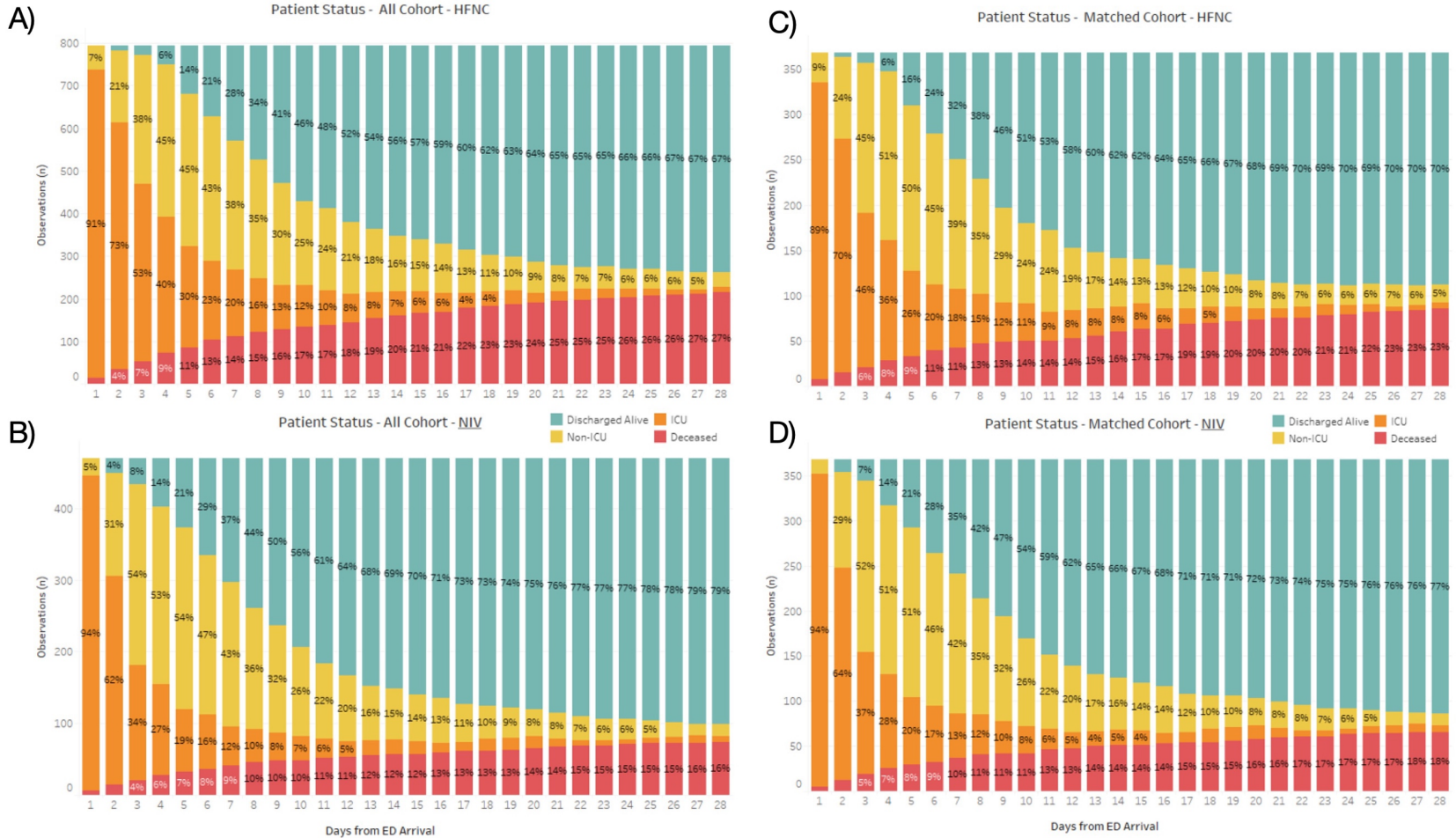


eFigure 3 Legend:

Respiratory support mode by hour, from initiation of non-invasive respiratory support (NIRS) through hour 72. Panels A and B display the hourly respiratory support modes for the overall cohort receiving A) HFNC (N=795) and B) NIV (N=407). Panels C and D represent only the matched cohort receiving C) HFNC (N=368) and D) NIV (N=368). Respiratory support modes are represented by colors, as detailed in the legend. The blank white space at the top of each graph represents patients who were discharged or died.

Definitions: Low flow oxygen= 1 to 6 Liters nasal canula; Medium flow oxygen= 6 to 15 liters nasal canula or oxygen mask; HFNC= high-flow nasal canula; NIV= non-invasive ventilation, which includes continuous positive airway pressure and bilevel positive airway pressure; IMV= invasive mechanical ventilation

eFigure 4. Daily status plot from ED arrival through day 28 in the overall and matched cohorts

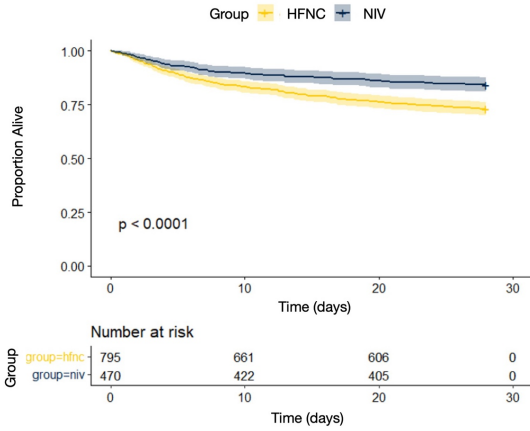


eFigure 4 Legend: Daily status plot from emergency department (ED) arrival through day 28. Panels A and B represent overall cohort receiving A) HFNC (N=795) and B) NIV (N=407). Panels C and D represent only the matched cohort receiving C) HFNC (N=368) and D) NIV (N=368).

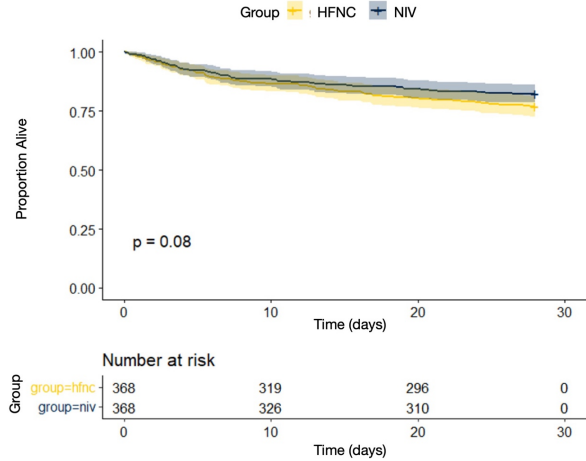
Definitions: HFNC= high-flow nasal canula; NIV= non-invasive ventilation, which includes continuous positive airway pressure and bilevel positive airway pressure.

eFigure 5. Kaplan Meier survival curves for 28-day survival and time to intubation in the overall and matched cohorts.

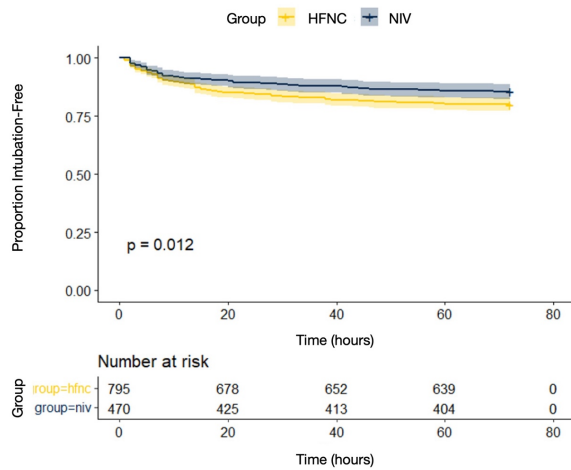
A) Time to death by day 28, overall cohort



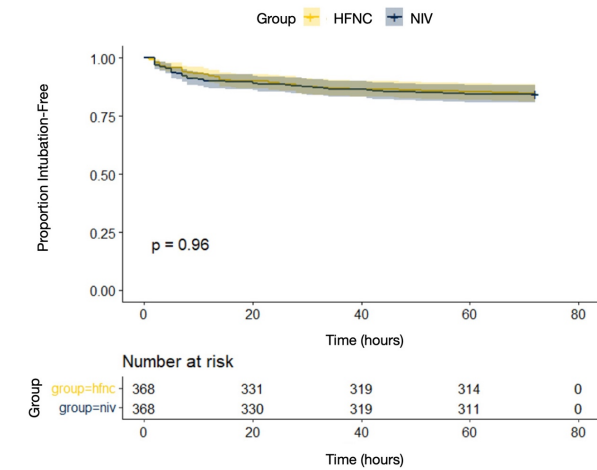
B) Time to death by day 28, matched cohort



C) Time to intubation, overall cohort



D) Time to intubation, matched cohort



eFigure 5 Legend

Top row: Kaplan-Meier 28-day survival curves for A) overall cohort (N=1,265) and B) matched cohort (N=736).
 Bottom row: Kaplan-Meier survival curves for time to intubation, censored at 72 hours from the initiation of non-invasive respiratory support in C) overall cohort (N=1,265) and D) matched cohort (N=736).

Definitions: HFNC= high-flow nasal canula (represented in yellow); NIV= non-invasive ventilation, which includes continuous positive airway pressure and bilevel positive airway pressure (represented in blue).