

1 **Acupuncture at Sanyinjiao( SP6 ) for patients with primary**  
2 **dysmenorrhea: Protocol for a systematic review and**  
3 **meta-analysis**

4 Xuemei Wang, PhD<sup>a</sup>, Jiao Yang, MS<sup>b</sup>, Jing Liu PhD<sup>a</sup>, YepengYang PhD<sup>c</sup>,  
5 Zhiyuan Zhang, MS<sup>d</sup>, Ping Xie,BS<sup>a,\*</sup>

6 **Author details**

7 <sup>a</sup>Department of Gynecology, Hospital of Chengdu University of  
8 Traditional Chinese Medicine; College of Clinical Medicine, Chengdu  
9 University of Traditional Chinese Medicine, Chengdu, Sichuan  
10 Province, P. R. China.

11 <sup>b</sup>West China Second University Hospital, Sichuan University /West  
12 China women's and children's Hospital.

13 <sup>c</sup>Shanxi University of Chinese Medicine.

14 <sup>d</sup>Dujiangyan Traditional Chinese Medicine Hospital, Chengdu, Sichuan  
15 Province, P. R. China.

16 ORCID iD: Xuemei Wang  
17 <https://orcid.org/0000-0003-2108-1789>

18 \*Correspondence: Ping Xie, Department of Gynecology, Hospital of  
19 Chengdu University of Traditional Chinese Medicine, No. 39  
20 Shi-er-qiao Road, Chengdu, 610072, Sichuan Province, P. R. China,  
21 Email: [fxp2410@126.com](mailto:fxp2410@126.com).

22 **Funding**

23 This study is funded by the National Science Foundation of China  
24 (No. 82374512,81674017), <http://www.nsf.gov.cn/>.

25 **Competing interests**

26 The authors have no conflicts of interest to disclose.

27 **Availability of data and materials**

28 After the completion of the systematic review, all the data extracted  
29 from the literature will be published with the publication of the  
30 article.

## 31 **Abstract**

32 **Background:** Primary dysmenorrhea (PD) is a gynecological disease that  
33 seriously affects women 's physical and mental health and quality of life.  
34 Sanyinjiao (SP6) is the most used acupoint for acupuncture treatment of PD, and  
35 acupuncture SP6 is more commonly used in the clinical treatment of PD, but  
36 evidence of effectiveness and safety is lacking. The purpose of this systematic  
37 review plan is to develop a study protocol that can evaluate the efficacy and  
38 safety of acupuncture SP6 in the treatment of PD.

39 **Methods:** The upper limit of retrieval time will be set to September 2023.  
40 Foreign and Chinese databases will be searched respectively: Cochrane Library,  
41 PubMed, EMBASE, Ovid, Korea Med, J-Global, J-Stage databases, and CNKI,  
42 CBM, SinoMed, VIP, Wanfang. Randomized controlled trials meeting the  
43 inclusion criteria will be screened by two independent reviewers, and data  
44 extraction and risk of bias assessment will be carried out. The primary outcome  
45 is dysmenorrhea symptoms, and the secondary outcomes include recent clinical  
46 cure rate, concomitant symptoms, serum prostaglandins, uterine artery blood  
47 flow resistance under ultrasound monitoring, and adverse reactions. Use RevMan  
48 V.5.3 software to perform the following operations: data synthesis, subgroup  
49 analysis, heterogeneity analysis, and sensitivity analysis. The evidence quality of  
50 clinical studies included in this study will be evaluated by the software of "  
51 Grading of Recommendations Assessment, Development, and Evaluation ".

52 **Results:** This study will provide comprehensive clinical evidence for treating PD

53 with acupuncture SP6.

54 **Conclusion:** This systematic review will confirm whether acupuncture SP6 is safe

55 and effective in treating PD clinically.

56 **Registration details:** PROSPERO CRD42020171664.

57 **Abbreviations:** PD = Primary Dysmenorrhea, SP6= Sanyinjiao, VAS = Visual

58 analogue scale, TCM = Traditional Chinese Medicine. LOCF=Last Observation

59 Carried forward, NSAIDs = Nonsteroidal Antiinflammatory Drugs, WCA =

60 Worst Case Analysis.

61 **Keywords:** acupuncture, sanyinjiao, SP6, primary dysmenorrhea, systematic review protocol

## 62 **Background**

63 Primary dysmenorrhea (PD) manifests as the main symptoms of periodic lower

64 abdominal pain in women during or after menstruation, accompanied by other

65 discomforts, such as cold sweat, dizziness, nausea, vomiting, diarrhea, fatigue,

66 palpitation, etc., to affect work and life, and gynecological examination indicates

67 that there is no obvious organic disease in reproductive organs [1]. PD, a

68 common clinical gynecological disease, is most common in young unmarried

69 women and has a significant impact on women's health, life and work. It is also

70 the most common cause of absenteeism among women [2, 3]. PD is a huge

71 public health burden. The prevalence of PD reported abroad ranges from 34% to

72 94%, among which 61% are moderate dysmenorrhea [4]. A survey of 2000 female

73 adolescents shows that the prevalence of dysmenorrhea is 84.8% (n = 1080), the  
74 average pain score is 5.87, about 34% (n = 439) of women have taken painkillers,  
75 and the average absenteeism rate is 18%[5].

76 At present, the pathogenesis of primary dysmenorrhea is not completely  
77 clear. It is generally believed that it is directly related to the increase of  
78 prostaglandin, and it is also related to the secretion and synthesis of  
79 vasopressin[6],  $\beta$ -endorphin[7], interleukin[8], oxytocin[9], estrogen, and  
80 progesterone[10, 11]. Its comprehensive effect causes pathological contraction  
81 of uterine smooth muscle, resulting in uterine ischemia and hypoxia, resulting in  
82 dysmenorrhea [12, 13]. The commonly used drugs for clinical treatment of PD  
83 are non-steroidal anti-inflammatory drugs (NSAIDs), antispasmodic drugs,  
84 sedatives, contraceptive-based, the effect is exact [14]. However, these drugs can  
85 only temporarily relieve pain, are not recommended for repeated use, and have  
86 disadvantages such as limited efficiency and side effects. It is impossible to  
87 carry out treatment for patients with no or low response to such drugs, treatment  
88 contraindications, treatment intolerance, or non-acceptance.

89 Acupuncture is a common method of treating PD with traditional Chinese  
90 medicine (TCM), of which Sanyinjiao (SP6) is the most used acupoint.  
91 Acupuncture SP6 is widely used in the treatment of PD and is one of the  
92 alternative methods for the treatment of PD[15-17]. In addition, acupuncture has  
93 almost no side effects such as dizziness, headache, lethargy, gastrointestinal  
94 bleeding, and drug dependence. There is some mechanism of acupuncture SP6.

95 Acupoint SP6 is located on the inside of the ankle joint of human lower limbs  
96 and is the intersection of the meridians of the liver, spleen, and kidney.  
97 According to the theory of TCM, the main pathogenesis of PD is the imbalance  
98 of Chongren and blocked meridians. Acupuncture SP6 has the functions of  
99 regulating Chongren, dredging collaterals, and relieving pain. Although the  
100 mechanism of acupuncture SP6 in the treatment of PD has not been fully  
101 elucidated. However, animal experiments show that acupuncture SP6 can play a  
102 role through the following mechanisms [18]: (1) improving uterine  
103 microcirculation disturbance; (2) regulate the endocrine function; (3) improve  
104 the function of the immune system; (4) affect the metabolism of nerve and  
105 neurotransmitters.

106 In 2013, a systematic review of acupuncture SP6 for PD, the experimental  
107 group and control group were acupuncture SP6 and GB39, respectively. The  
108 outcome index was only related to the visual analog scale (VAS) pain score. This  
109 study failed to evaluate the efficacy, improvement of accompanying symptoms,  
110 adverse reactions, and safety of acupuncture SP6 for PD. Acupuncture is widely  
111 used in East Asia, represented by China, Japan, and Korea. However, in this  
112 study, only four English databases were retrieved, not East Asian databases.  
113 Therefore, there are some imperfections in the design of the systematic review,  
114 which may affect the authenticity of its research results. In recent years, the  
115 clinical research of acupuncture SP6 in the treatment of PD has gradually  
116 increased, and the efficacy evaluation indicators have also gradually increased

117 [15, 19, 20]. Therefore, the aim of this systematic review is to evaluate the  
118 efficacy and safety of acupuncture at SP6 in the treatment of PD. This work will  
119 provide reliable clinical evidence with objective results by formulating strict  
120 retrieval strategies and standardized research programs.

## 121 **Methods**

### 122 **Registration and ethics**

123 This systematic review protocol has been registered on PROSPERO international  
124 platform with the registration number CRD 42020171664  
125 (<https://www.crd.york.ac.uk/PROSPERO/>). In the process of implementation,  
126 this work will strictly refer to the detailed rules [17] and specifications set in the  
127 statement of Preferred Reporting Items for Systematic Reviews and  
128 meta-analyses (PRISMA) [18, 21, 22]. This protocol is designed to guide further  
129 systematic review work, so there is no need for ethical review. Extracting  
130 relevant data from published literature will be the source of data needed in this  
131 systematic review, and the process of using literature data does not involve  
132 ethical issues.

### 133 **Studies of eligibility criteria**

134 **Types of studies design.** We will include randomized controlled trials (RCTs)  
135 of acupuncture at SP6 points for PD. The included studies will not consider the  
136 restrictions of region, publishing language, publishing status, and publishing  
137 year. Non-randomized controlled trials, literature reviews, animal experiments,

138 case reports, medical record discussions, experience summaries, and theoretical  
139 discussions will be excluded.

140 **Participants.** According to the clinical practice guidelines for primary  
141 dysmenorrhea issued by SOGC [18, 23], this study will include patients who  
142 meet the diagnostic criteria for primary dysmenorrhea. The diagnostic criteria of  
143 PD include periodic lower abdominal pain during menstruation or before and  
144 after menstruation (within 1 week), sometimes accompanied by soreness of the  
145 waist, fatigue, nausea, vomiting, cold limbs, and other discomforts, which affects  
146 work and life. After gynecological examination, there is no obvious organic  
147 lesion in reproductive organs. This disease mostly occurs in adolescent girls 2 to  
148 3 years after menarche or young women who have not given birth. Regardless of  
149 race, nationality, education level, and economic status of patients.

150 **Types of interventions.** We will include clinical trials of acupuncture at SP6  
151 for PD, excluding those using other methods (acupoint injection, acupoint catgut  
152 embedding, acupressure, moxibustion, cupping, transcutaneous electrical nerve  
153 stimulation) to stimulate SP6 for PD.

154 The control group can be SP6 sham acupuncture, placebo, blank group.  
155 Studies in which the control group consisted of drug therapy (eg, NSAIDs,  
156 Hormonal Treatment, vitamins), acupoint injections, and other  
157 complementary alternative therapies (eg, Chinese herbal medicine, yoga,  
158 Dietary Supplements) will be excluded. The following treatment comparisons

159 will be considered. (1) SP6 acupuncture / SP6 sham acupuncture; (2) SP6  
160 acupuncture / placebo; (3) SP6 acupuncture / no treatment.

## 161 **Outcome measures**

162 **Primary outcome.** The primary outcome will be the Pain index. Visual  
163 analogue scale (VAS) to assess changes in pain intensity.

164 **Secondary outcome.** (1) The recent clinical recovery rate. After treatment,  
165 abdominal pain and other symptoms disappeared, and no recurrence occurred  
166 in 3 menstrual cycles. (2) indicators of concomitant symptoms. Concomitant  
167 symptoms were evaluated by the following scales: Cox menstrual symptom  
168 scale (CMSS), menstrual symptom score (MSS), retrospective symptom scale  
169 (RSS). (3) Serum prostaglandin. (4) Ultrasonic monitoring of uterine artery  
170 blood flow resistance. (5) Adverse reactions, adverse events.

## 171 **Literature sources and retrieval strategies**

172 **General database retrieval and retrieval strategy** Electronic databases  
173 will be searched to obtain the required study literature. The upper limit of  
174 retrieval time will be set to September 2023. Foreign and Chinese databases will  
175 be searched respectively: Cochrane Library, PubMed, EMBASE, Ovid, Korea  
176 Med, J-Global, J-Stage databases, and CNKI, CBM, SinoMed, VIP, Wanfang.  
177 Randomized controlled trials meeting the inclusion criteria will be screened by  
178 two independent reviewers (XW, JY). We will search the above 12 databases  
179 using subject terms and free words. The retrieval strategy of the PubMed  
180 database is shown in Table 1, and the retrieval strategies of other databases need



181 to be converted accordingly. For the related studies involved in the references,  
182 manual retrieval will be adopted.

183 **Table 1. Search strategy for PubMed.**

Number	Search terms of query
#1	Dysmenorrhea[Mesh] OR Functional dysmenorrhea[tiab] OR Primary dysmenorrhea [tiab] OR algomenorrhea[tiab] OR menalgia[tiab] OR menorrhagia*[tiab] OR Menstruation Disturbances[Mesh] OR difficult menstruation [tiab]
#2	Menstrua*[tiab]OR Menses[tiab]
#3	Colic[Mesh] OR Cramp*[tiab] OR Pain*[tiab]
#4	#2 AND #3
#5	#1 OR #4
#6	Acupuncture therapy [Mesh] OR Acupuncture[tiab]
#7	Sanyinjiao[tiab] OR SP6[tiab]
#8	Acupuncture Points[Mesh] OR *Point*[tiab]
#9	#7and#8
#10	#5 and #6 and #9
#11	randomized controlled trial[pt] OR controlled clinical trial[pt] OR randomized[tiab] OR placebo[tiab] OR clinical trials as topic [Mesh: NoExp] OR randomly[tiab] OR trial[tiab]) NOT (animals[Mesh] NOT humans [Mesh])
#12	#10 and #11

184

185 **Other database resources** To obtain data from ongoing clinical trials, the  
186 following databases will be searched: UK National Research Register, WHO  
187 ICTRP, ISRCTN, UK Clinical Trial Gateway, Clinic-Trials.gov, UMIN CTR,  
188 Chinese Clinical Trial Register. To obtain unpublished clinical trial data, we will  
189 continue to search the following databases: OpenGrey, ProQuest, and Conference  
190 Literature Database ISI proceeding.

191 **Data extraction and analysis**

192 **Study selection** Two independent reviewers (JL, ZZ) will be responsible for  
193 the literature screening, and the bibliographies that qualified in the preliminary  
194 screening will be imported into the literature management software EndNote (V.  
195 X9.0). and then read the titles and abstracts one by one, and eliminate the

196 duplicate or unqualified literature titles. After obtaining the full text of the  
197 bibliography, read the full text carefully and evaluate the final included  
198 literature according to the inclusion criteria. For the literature that did not meet  
199 the inclusion criteria, Excel will be used to record the reasons for exclusion in  
200 detail. If the full text is not available in the database, we will contact the  
201 corresponding author via email to obtain the full text. If there is a disagreement  
202 in the whole process of literature screening, the third reviewer (PX) will help to  
203 judge. The process of study screening is shown in the flowchart (Fig 1).

204 **Figure1: The PRISMA flow diagram of literature screening process.**

205 Figure 1 see attachment.

206 **Data extraction** The contents of the Excel spreadsheet used for literature  
207 data extraction will be decided after discussion by all authors. The contents of  
208 the data extraction Excel are composed of five parts: basic information (number,  
209 title, author, year, journal, country, fund, language); Study methods (diagnostic  
210 criteria, sample size, design type, statistical method, randomized method,  
211 treatment plan concealment, blind method, study data integrity, follow-up time);  
212 Patient characteristics (course of disease, degree of dysmenorrhea, age, region);  
213 Intervention measures (treatment frequency, treatment time, acupuncture  
214 group/control group type); Outcome indicators (outcome measurement methods,  
215 measurement time points, primary outcome indicators, secondary outcome  
216 indicators, efficacy evaluation methods, adverse reactions).

217 Before the formal literature data extraction, the applicability of the  
218 literature extraction form will be tested, and the literature extraction form will be  
219 modified according to the preliminary test results to make it more perfect and  
220 reliable. Two uniformly trained reviewers (ZZ, JY) will be responsible for  
221 formal literature data extraction. If there are differences in the process of data  
222 extraction, the two authors will discuss and solve them first. If differences still  
223 exist after discussion, the third reviewer (PX) will assist in judging. In the  
224 process of data extraction, if the data records are fuzzy and difficult to be  
225 extracted, we will contact the corresponding author via e-mail and confirm the  
226 data. After data extraction, two reviewers (YY, PX) will cross-check the  
227 extraction results and input them into Revman software (V.5.3).

228 **Risk of bias assessment** Two reviewers (JY, YY) will carefully read the  
229 specific requirements of Cochrane Review Handbook 5.1.0 [18, 19] for bias risk  
230 assessment, and will independently use the Cochrane Risk-Of Bias [24]  
231 assessment tool to evaluate the risk of bias of the included studies. After the  
232 assessment, the two reviewers will cross-check the assessment results. If the  
233 assessment results of both parties are different, they will be discussed and  
234 resolved through negotiation first. If the differences cannot be resolved after  
235 discussion, the third author (XW) shall assist in the judgment. We will evaluate  
236 the risk of bias in terms of the method of random sequence generation, whether  
237 the allocation scheme is hidden, whether participants are blinded, whether the  
238 study outcome evaluation is blinded, the integrity of the outcome data, selective

239 reporting, and so on. Bias risk assessment results are divided into three  
240 categories: high risk, low risk, and unclear. The assessment results will be  
241 imported into Review Manager 5.3 software to generate the risk of bias graph  
242 and risk of bias summary.

243 **Measures of treatment effect.** If the study results are dichotomous data, we  
244 will use odds ratio (OR) and 95% confidence interval (CI) to evaluate the  
245 efficacy of acupuncture SP6 in treating PD. If the study results are continuous  
246 data, we will evaluate the curative effect of acupuncture SP6 on PD using mean  
247 difference (MD), or standardized mean difference (SMD), and 95% confidence  
248 interval (CI).

249 **Dealing with missing data.** If the record of study data is not integrity, we will  
250 contact the corresponding author through e-mail, telephone, etc., to obtain  
251 complete study data as far as possible. If the complete data is still not available,  
252 the research team members will exclude this study after discussion. The impact  
253 of missing data on the overall study results will be determined by sensitivity  
254 analysis.

255 **Assessment of heterogeneity.** The heterogeneity among all included studies will  
256 be measured by the Chi-square test ( $\chi^2$ ) and  $I^2$  test. If the heterogeneity among  
257 the included studies is low, that is,  $P > 0.1$  and  $I^2 \leq 50\%$ , the fixed-effect model  
258 should be used to analyze the study results. If the heterogeneity among the  
259 included studies is moderate, that is,  $P \leq 0.1$  and  $I^2 > 50\%$ , the random effect  
260 model should be used to analyze the study results. If the heterogeneity among the

261 included studies is high, that is,  $P \leq 0.1$ ,  $I^2 > 75\%$ , subgroup analysis or  
262 descriptive analysis should be conducted.

263 **Analysis of publication bias.** If the total number of studies finally included in  
264 this systematic review exceeds 10, we will use a funnel plot to evaluate  
265 publication bias. If necessary, we will further use the Egger regression and Begg  
266 correlation test to test the symmetry of the funnel plot. In addition to publication  
267 bias, selectivity bias, language bias, and citation bias may also lead to funnel  
268 plot asymmetry. If there is an asymmetry in the funnel plot, we will try to  
269 analyze the reasons.

270 **Data synthesis** The study data will be synthesized and analyzed using  
271 RevMan5.3 software according to Cochrane guidelines. If the heterogeneity  
272 among the included studies is low, the fixed-effect model should be used to  
273 analyze the study results. If the heterogeneity among the included studies is  
274 moderate, the random effect model should be used to analyze the study results. If  
275 the heterogeneity among the included studies is high, subgroup analysis or  
276 descriptive analysis should be conducted.

### 277 **Subgroup analysis**

278 If the analysis of heterogeneity indicates that there is a certain degree of  
279 heterogeneity among the studies included in this systematic review, we will use  
280 subgroup analysis to determine the source of the heterogeneity. In this study,  
281 subgroup analysis can be performed in terms of patient age, depth of acupuncture,  
282 frequency of acupuncture, and duration of illness.

283 **Sensitivity analysis** The stability of systematic review results can be tested  
284 by sensitivity analysis. We will test the stability of meta-analysis results from  
285 the aspects of literature quality, sample size, data integrity, and so on.

286 **Grading of evidence quality** According to the detailed requirements of the  
287 quality of evidence in clinical studies in GRADE guidelines and the  
288 classification of the quality of evidence: high, moderate, low, or very low. We  
289 will use the GRADE software to evaluate the quality of evidence in clinical  
290 studies included in this systematic review.

## 291 **Discussion**

292 It is recorded in ancient books of traditional Chinese medicine that SP6 point  
293 is good at treating dysmenorrhea, and the clinical application of acupuncture  
294 at SP6 in the treatment of PD has gradually increased in clinical practice.  
295 Chinese experts agree that acupuncture can be used as an adjunct or  
296 alternative to PD therapy [25]. However, 2017 SOGC Clinical Practice  
297 Guideline (No. 345-Primary Dysmenorrhea ConsensusGuideline) states that  
298 there is insufficient evidence to support the efficacy and safety of  
299 acupuncture at SP6 in the treatment of PD, therefore, we conducted a  
300 systematic review and meta-analysis to evaluate the efficacy and safety of  
301 acupuncture at Sanyinjiao point in the treatment of PD patients. There are  
302 inevitable limitations to this systematic review. First, there may be a risk of  
303 heterogeneity in the way of acupuncture, the type of needle, and the duration  
304 of a single acupuncture treatment, and second, it is difficult to obtain

305 complete raw data from the literature, which may cause reporting bias, which  
306 we will clarify in detail. It is hoped that this study will provide the latest  
307 evidence analysis on the effectiveness of acupuncture at SP6 in the treatment  
308 of PD in order to provide ideas and methods that can be used for reference for  
309 doctors, patients, and medical policy-makers.

### 310 **Supporting information**

311 **S1 Checklist. PRISMA-P 2015 Checklist**  
312 **(DOCX)**

### 313 **Author contributions**

314 **Conceptualization:** Xuemei Wang, Ping Xie.

315 **Data curation:** Xuemei Wang, Jiao Yang, Zhiyuan Zhang.

316 **Formal analysis:** Xuemei Wang, Jing Liu, YepengYang.

317 **Funding acquisition:** Ping Xie.

318 **Investigation:** Xuemei Wang, Jiao Yang, Zhiyuan Zhang.

319 **Methodology:** Xuemei Wang, Jing Liu, YepengYang.

320 **Project administration:** Xuemei Wang, Ping Xie.

321 **Resources:** Xuemei Wang, Jiao Yang, Zhiyuan Zhang.

322 **Software:** Xuemei Wang, Jing Liu, YepengYang.

323 **Supervision:** Xuemei Wang, Jiao Yang, Ping Xie.

324 **Validation:** Xuemei Wang, Ping Xie.

325 **Visualization:** Xuemei Wang, Ping Xie.

326 **Writing – original draft:** Xuemei Wang.

327 **Writing – review & editing:** Ping Xie.

## 328 **Acknowledgements**

329 This work is supported by the National Science Foundation of China  
330 (No. 82374512,81674017).

## 331 **Ethics approval and consent to participate**

332 This work is a systematic review and does not need to be submitted  
333 to the ethics committee for review.

## 334 **Consent for publication**

335 Our research results will be published in peer-reviewed scientific  
336 journals, the Prospero website, and relevant academic conferences.

## 337 **References**

- 338 1. Chen BL, Guo Q, Zhang QW, Di Z, Zhang QA. Revealing the Central Mechanism of  
339 Acupuncture for Primary Dysmenorrhea Based on Neuroimaging: A Narrative Review. Pain  
340 research & management. 2023;2023. <https://doi.org/10.1155/2023/8307249> PMID:  
341 WOS:000938131200001.
- 342 2. Mammo M, Alemayehu M, Ambaw G. Prevalence of Primary Dysmenorrhea, Its  
343 Intensity and Associated Factors Among Female Students at High Schools of Wolaita Zone,  
344 Southern Ethiopia: Cross-Sectional Study Design. International Journal of Womens Health.  
345 2022;14:1569-77. <https://doi.org/10.2147/IJWH.S384275> PMID: WOS:000885490800001.
- 346 3. Ortiz MI. The Trend of Increasing Primary Dysmenorrhea Prevalence in Mexican  
347 University Students. Clinical and Experimental Obstetrics & Gynecology. 2023;50(3).  
348 <https://doi.org/10.31083/j.ceog5003058> PMID: WOS:000975453700015.
- 349 4. Azagew AW, Kassie DG, Walle TA. Prevalence of primary dysmenorrhea, its intensity,  
350 impact and associated factors among female students' at Gondar town preparatory school,  
351 Northwest Ethiopia. BMC women's health. 2020;20(1):5. Epub 2020/01/08.  
352 <https://doi.org/10.1186/s12905-019-0873-4> PMID: 31906945; PubMed Central PMCID:  
353 PMC6945628.
- 354 5. Yucel G, Kendirci M, Gul U. Menstrual Characteristics and Related Problems in 9- to  
355 18-Year-Old Turkish School Girls. Journal of pediatric and adolescent gynecology.  
356 2018;31(4):350-5. Epub 2018/03/20. <https://doi.org/10.1016/j.jpag.2018.03.002> PMID:  
357 29550626.
- 358 6. Oladosu FA, Tu FF, Garfield LB, Garrison EF, Steiner ND, Roth GE, et al. Low Serum  
359 Oxytocin Concentrations Are Associated with Painful Menstruation. Reproductive sciences  
360 (Thousand Oaks, Calif). 2020;27(2):668-74. Epub 2020/02/13.

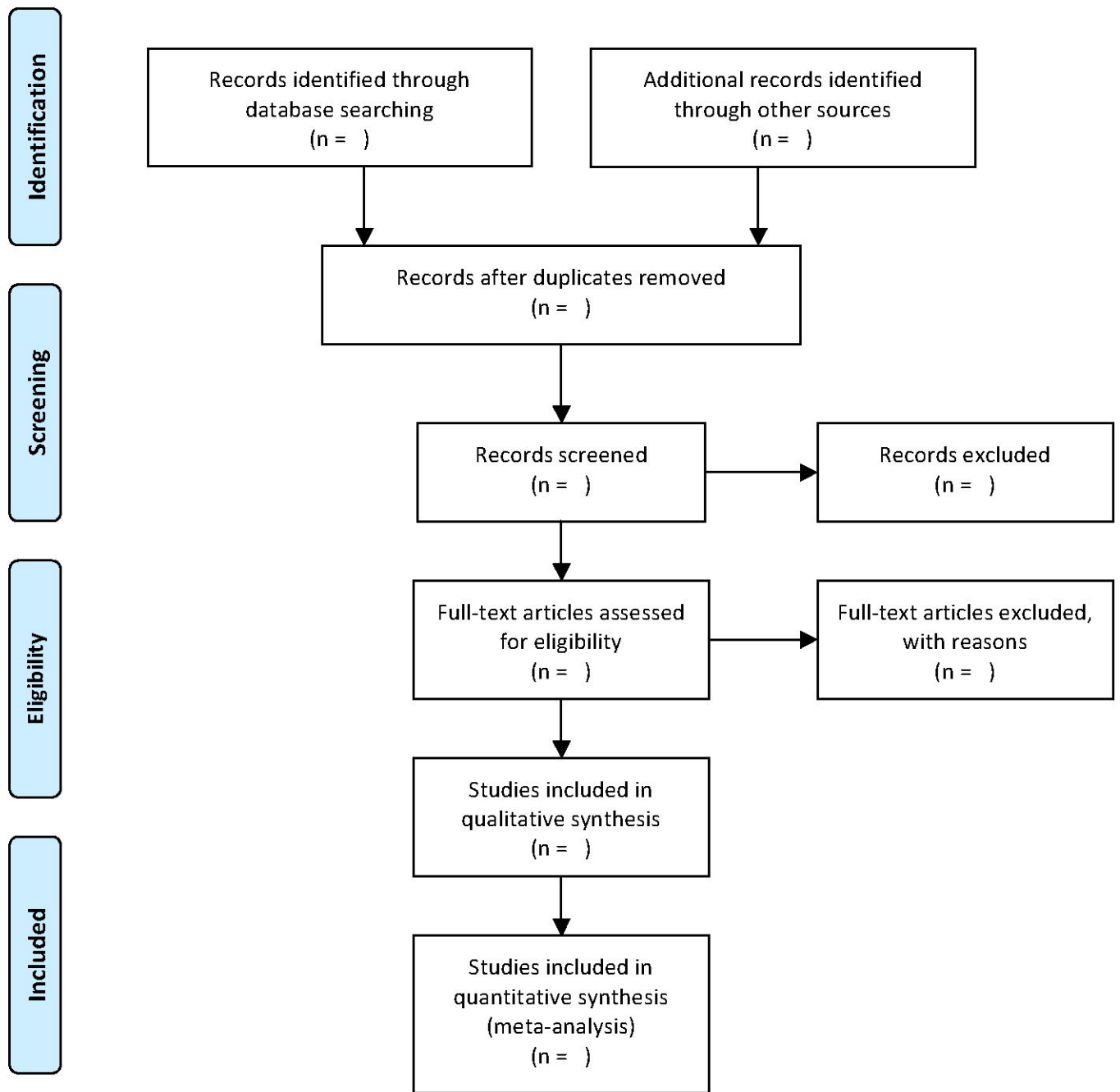


- 361 <https://doi.org/10.1007/s43032-019-00071-y> PMID: 32046441; PubMed Central PMCID:  
362 PMCPMC7044072.
- 363 7. Libarle M, Simon P, Bogne V, Pintiaux A, Furet E. [Management of dysmenorrhea].  
364 Revue medicale de Bruxelles. 2018;39(4):264-72. Epub 2018/10/16. PubMed PMID:  
365 30320987.
- 366 8. Barcikowska Z, Rajkowska-Labon E, Grzybowska ME, Hansdorfer-Korzon R, Zorena K.  
367 Inflammatory Markers in Dysmenorrhea and Therapeutic Options. International journal of  
368 environmental research and public health. 2020;17(4). Epub 2020/02/20.  
369 <https://doi.org/10.3390/ijerph17041191> PMID: 32069859.
- 370 9. Osayande AS, Mehulic S. Diagnosis and initial management of dysmenorrhea. American  
371 family physician. 2014;89(5):341-6. Epub 2014/04/04. PubMed PMID: 24695505.
- 372 10. Yang WW, Chen PB, Jin LM, Tang XY, Qin ZY, Zhou YJ, et al. [Effect of proximal and  
373 distal acupoint catgut-embedding on uterus prostaglandin, serum IL-2 and splenic NK cell  
374 activity in primary dysmenorrhea rats]. Zhen Ci Yan Jiu. 2021;46(3):221-5. Epub 2021/04/03.  
375 <https://doi.org/10.13702/j.1000-0607.200618> PMID: 33798295.
- 376 11. Woo HL, Ji HR, Pak YK, Lee H, Heo SJ, Lee JM, et al. The efficacy and safety of  
377 acupuncture in women with primary dysmenorrhea: A systematic review and meta-analysis.  
378 Medicine (Baltimore). 2018;97(23):e11007. Epub 2018/06/08.  
379 <https://doi.org/10.1097/md.00000000000011007> PMID: 29879061; PubMed Central PMCID:  
380 PMCPMC5999465.
- 381 12. Zhang F, Sun M, Han S, Shen X, Luo Y, Zhong D, et al. Acupuncture for Primary  
382 Dysmenorrhea: An Overview of Systematic Reviews. Evid Based Complement Alternat Med.  
383 2018;2018:8791538. Epub 2018/12/26. <https://doi.org/10.1155/2018/8791538> PMID:  
384 30584456; PubMed Central PMCID: PMCPMC6280308.
- 385 13. Afshari Fard MR, Mohammadi A, Ma LX, Mu JD, Yu WY, Song Y, et al. Comparison  
386 of the immediate analgesic effect of perpendicular needling and transverse needling at SP6 in  
387 patients with primary dysmenorrhea: Study protocol for a randomized controlled trial.  
388 Medicine (Baltimore). 2020;99(3):e18847. Epub 2020/02/06.  
389 <https://doi.org/10.1097/md.00000000000018847> PMID: 32011502; PubMed Central PMCID:  
390 PMCPMC7220365.
- 391 14. Yongxia W, Siyi Y, Hong Z, jie Y. Mechanism Research on Treatment of Primary  
392 Dysmenorrhea with Acupuncture and Moxibustion of Sanyinjiao (SP6). Journal of Chengdu  
393 University of TCM. 2015;38(04):106-8. Epub 2015/12/15.  
394 <https://doi.org/10.13593/j.cnki.51-1501/r.2015.04.106>
- 395 15. Sun J, Wang Y, Zhang Z, Cao H, Wang P, Zhao M, et al. [Efficacy of filiform needle  
396 manipulation on primary dysmenorrhea:a systematic review]. Zhongguo zhen jiu = Chinese  
397 acupuncture & moxibustion. 2017;37(8):887-92. Epub 2017/12/13.  
398 <https://doi.org/10.13703/j.0255-2930.2017.08.023> PMID: 29231353.
- 399 16. Burnett M, Lemyre M. No. 345-Primary Dysmenorrhea Consensus Guideline. Journal of  
400 obstetrics and gynaecology Canada : JOGC = Journal d'obstetrique et gynecologie du Canada :  
401 JOGC. 2017;39(7):585-95. Epub 2017/06/20. <https://doi.org/10.1016/j.jogc.2016.12.023>  
402 PMID: 28625286.

- 403 17. Shamseer L, Moher D, M. C. Preferred reporting items for systematic review and  
404 meta-analysis protocols (PRISMA-P) 2015: elaboration and explanation. *BMJ (Clinical*  
405 *research ed)*. 2016;354:i4086. Epub 2016/07/23. <https://doi.org/10.1136/bmj.i4086> PMID:  
406 27444514.
- 407 18. Liberati A, Altman DG, Tetzlaff J, Mulrow C, Gotzsche PC, Ioannidis JP, et al. The  
408 PRISMA statement for reporting systematic reviews and meta-analyses of studies that  
409 evaluate healthcare interventions: explanation and elaboration. *BMJ (Clinical research ed)*.  
410 2009;339:b2700. Epub 2009/07/23. <https://doi.org/10.1136/bmj.b2700> PMID: 19622552;  
411 PubMed Central PMCID: PMCPMC2714672.
- 412 19. Higgins JP. *Cochrane handbook for systematic reviews of interventions*. Version 5.1.0  
413 [updated March 2011]. The Cochrane Collaboration. [www.cochrane-handbook.org](http://www.cochrane-handbook.org). 2011.
- 414 20. Higgins JP, Altman DG, Gotzsche PC, Juni P, Moher D, Oxman AD, et al. The Cochrane  
415 Collaboration's tool for assessing risk of bias in randomised trials. *BMJ (Clinical research ed)*.  
416 2011;343:d5928. Epub 2011/10/20. <https://doi.org/10.1136/bmj.d5928> PMID: 22008217;  
417 PubMed Central PMCID: PMCPMC3196245.
- 418 21. Barcot O, Boric M, Poklepovic Pericic T, Cavar M, Dosenovic S, Vuka I, et al. Risk of  
419 bias judgments for random sequence generation in Cochrane systematic reviews were  
420 frequently not in line with Cochrane Handbook. *BMC medical research methodology*.  
421 2019;19(1):170. Epub 2019/08/07. <https://doi.org/10.1186/s12874-019-0804-y> PMID:  
422 31382898; PubMed Central PMCID: PMCPMC6683577.
- 423 22. Page MJ, McKenzie JE, Bossuyt PM, Boutron I, Hoffmann TC, Mulrow CD, et al. The  
424 PRISMA 2020 statement: An updated guideline for reporting systematic reviews. *PLoS*  
425 *medicine*. 2021;18(3). <https://doi.org/10.1371/journal.pmed.1003583> PMID:  
426 WOS:000636251100003.
- 427 23. Tu F, Hellman K. Primary Dysmenorrhea: Diagnosis and Therapy. *Obstetrics and*  
428 *gynecology*. 2021;137(4):752. Epub 2021/03/25.  
429 <https://doi.org/10.1097/aog.0000000000004341> PMID: 33759824; PubMed Central PMCID:  
430 PMCPMC8034604.
- 431 24. Aamann L, Dam G, Rinnov AR, Vilstrup H, Gluud LL. Physical exercise for people with  
432 cirrhosis. *The Cochrane database of systematic reviews*. 2018;12:Cd012678. Epub  
433 2018/12/24. <https://doi.org/10.1002/14651858.CD012678> PMID: 30575956; PubMed Central  
434 PMCID: PMCPMC6517144.
- 435 25. Zhang JJ, Wang J, Bai P, Tan C, Wang ZC, Chen S, et al. [Evidence-based Clinical  
436 Practice Guideline of Acupuncture and Moxibustion for Primary Dysmenorrhea: development  
437 and characteristics]. *Zhongguo zhen jiu = Chinese acupuncture & moxibustion*.  
438 2019;39(12):1343-6. Epub 2019/12/11. <https://doi.org/10.13703/j.0255-2930.2019.12.023>  
439 PMID: 31820613.

441  
442  
443  
444  
445

446 Figure 1: The PRISMA flow diagram of literature screening process.



From: Moher D, Liberati A, Tetzlaff J, Altman DG, The PRISMA Group (2009). Preferred Reporting Items for Systematic Reviews and Meta-Analyses: The PRISMA Statement. PLoS Med 6(7): e1000097. doi:10.1371/journal.pmed1000097

Figure 1. The PRISMA flow diagram of literature screening process.