

Supplementary Appendix to

**Comparisons of Proprotein Convertase Subtilisin/Kexin Type 9 Inhibitors (PCSK9I) versus Ezetimibe on Major Adverse Cardiovascular Events Amongst Patients with Dyslipidaemia: A Population-Based Study**

Oscar Hou In Chou MSc \* <sup>1,2</sup>, Lifang Li\* <sup>3</sup>, Cheuk To Skylar Chung <sup>2</sup>, Lei Lu PhD <sup>4</sup>, Quinncy Lee MPH<sup>2</sup>, Hugo Hok Him Pui <sup>5</sup>, Bosco Kwok Hei Leung <sup>5</sup>, Carlin Chang MBChB Mphil MRCP FHKAM <sup>6</sup>, Tong Liu MD PhD <sup>7</sup>, Abraham Ka Chung Wai MBChB MD FRCEM FRCP <sup>5</sup>, Gregory Lip MD FRCP FESC FACC <sup>8</sup>, Bernard Man Yung Cheung MB BChir PhD FRCP <sup>1</sup>, Gary Tse MD DM PhD FRCP FFPH <sup>^ 7,9,10</sup>, Jiandong Zhou PhD<sup>^ 11</sup>

<sup>1</sup> Division of Clinical Pharmacology and Therapeutics, Department of Medicine, LKS Faculty of Medicine, The University of Hong Kong, Hong Kong, China

<sup>2</sup> Diabetes Research Unit, Cardiovascular Analytics Group, PowerHealth Limited, Hong Kong, China

<sup>3</sup> Department of Biostatistics & Health Informatics, Institute of Psychiatry, Psychology & Neuroscience, King's College London, London, United Kingdom

<sup>4</sup> Institute of Biomedical Engineering, Department of Engineering Science, University of Oxford, Oxford, United Kingdom

<sup>5</sup> Emergency Medicine Unit, Li Ka Shing Faculty of Medicine, The University of Hong Kong, Hong Kong, China

<sup>6</sup> Department of Medicine, Queen Mary Hospital, Hong Kong, China

<sup>7</sup> Tianjin Key Laboratory of Ionic-Molecular Function of Cardiovascular Disease, Department of Cardiology, Tianjin Institute of Cardiology, Second Hospital of Tianjin Medical University, Tianjin 300211, China

<sup>8</sup> Liverpool Centre for Cardiovascular Science at University of Liverpool, Liverpool John Moores University and Liverpool Heart & Chest Hospital, Liverpool, United Kingdom; and Danish Center for Health Services Research, Department of Clinical Medicine, Aalborg University, Aalborg, Denmark

<sup>9</sup> Kent and Medway Medical School, Canterbury, Kent, CT2 7NT, United Kingdom

<sup>10</sup> School of Nursing and Health Studies, Hong Kong Metropolitan University, Hong Kong, China

<sup>11</sup> Division of Health Science, Warwick Medical School, University of Warwick, Coventry, United Kingdom

\* Contributed equally

<sup>^</sup> Correspondence to:

Gary Tse, MD DM PhD FRCP

Kent and Medway Medical School, Canterbury, United Kingdom

Tianjin Institute of Cardiology, The Second Hospital of Tianjin Medical University, Tianjin 300211, China

School of Nursing and Health Studies, Hong Kong Metropolitan University, Hong Kong, China

Email: [garytse86@gmail.com](mailto:garytse86@gmail.com)

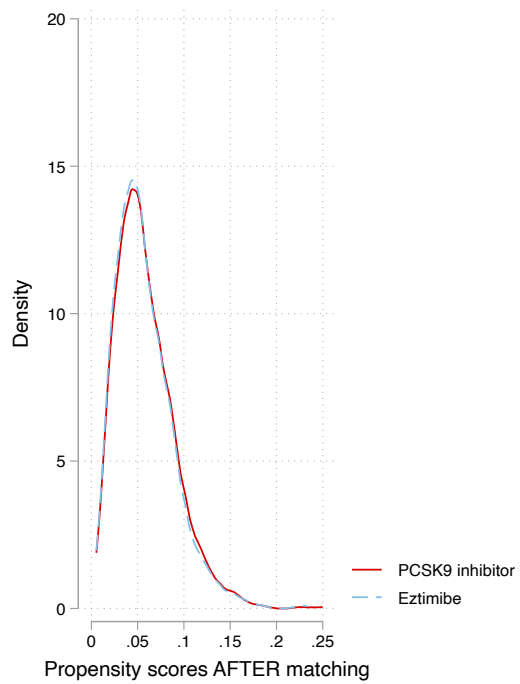
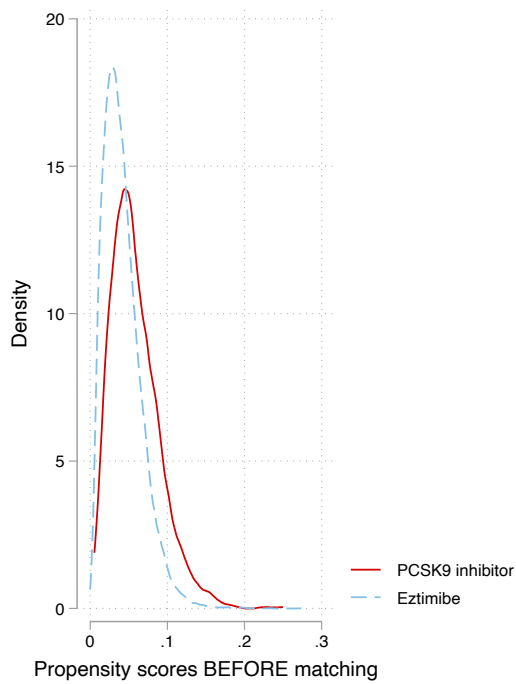
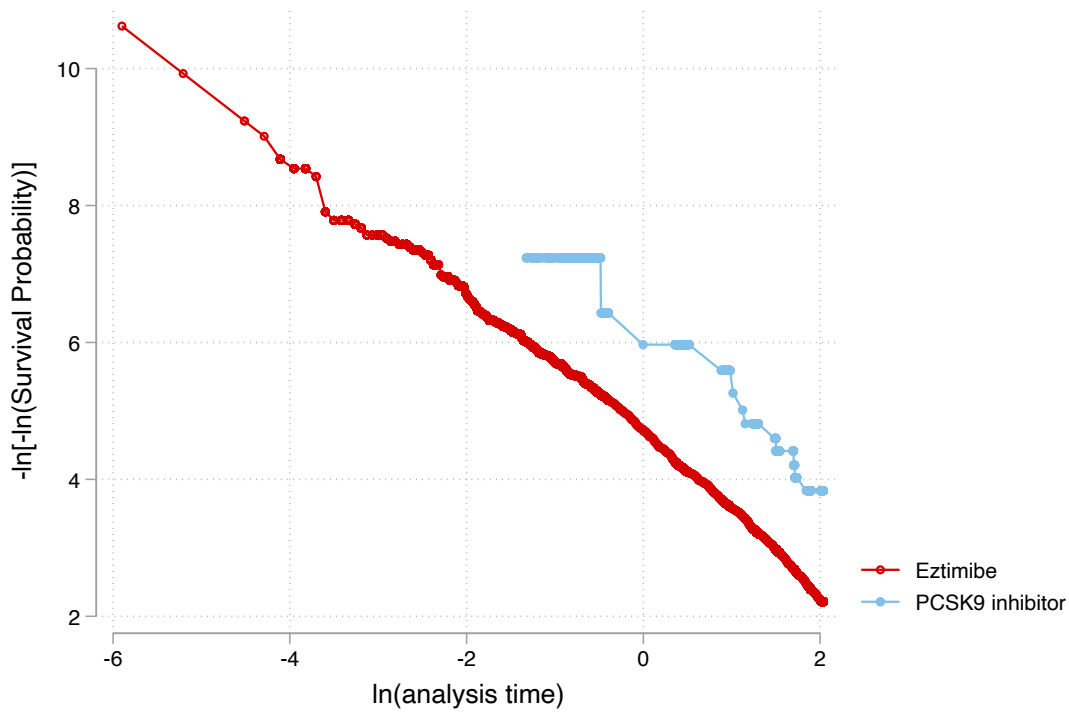
Jiandong Zhou, PhD,

Division of Health Science, Warwick Medical School, University of Warwick, United Kingdom

Email: [jiandong.zhou@warwick.ac.uk](mailto:jiandong.zhou@warwick.ac.uk)

## Table of Contents

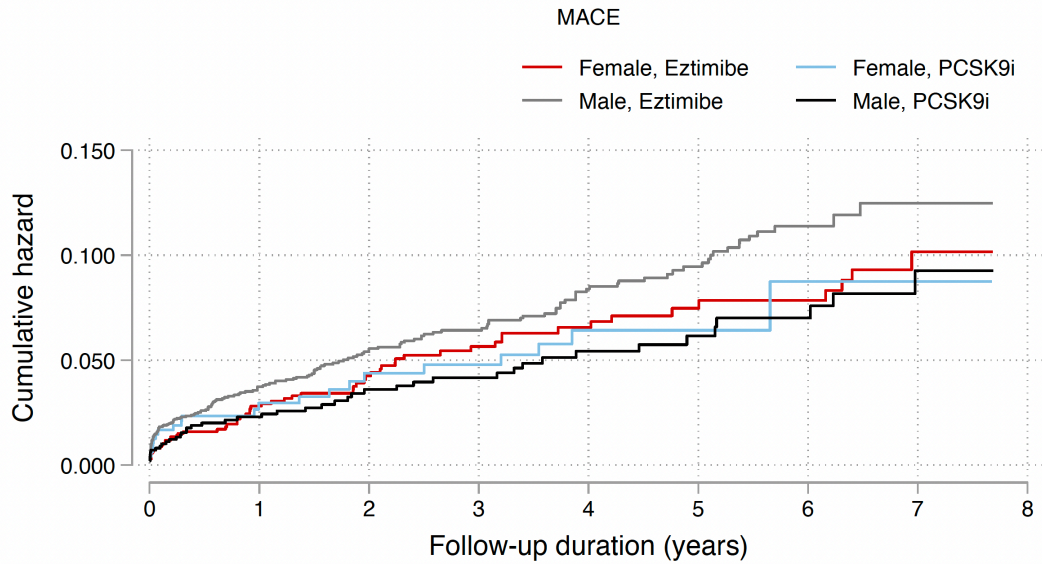
<i>Supplementary Figure 1. Propensity score matching comparisons and proportional hazard assumption testing for PCSK9 inhibitor versus ezetimibe before and after 1:3 matching with nearest neighbour search strategy with calliper of 0.1 .....</i>	<i>4</i>
<i>Supplementary Figure 2. Cumulative incidence curves for MACE, and all-cause mortality stratified by patient gender at initial drug exposure of PCSK9 inhibitor and ezetimibe in the matched cohort .....</i>	<i>5</i>
<i>Supplementary figure 3. Marginal effects of time weighted mean LDL, number of prior lipid-lowering drugs, and dyslipidaemia duration with 95% CIs on adverse outcomes by drug use in the matched cohort.....</i>	<i>8</i>
<i>Supplementary Table 1. The International Classification of Diseases, Clinical Modification (ICD-9) and (ICD-10) codes for definitions of past comorbidities and outcomes.....</i>	<i>10</i>
<i>Supplementary table 2. Multivariate Cox regression models with adjustments to predict adverse outcomes in the matched cohort.....</i>	<i>11</i>
<i>Supplementary Table 3. Number of adverse outcomes and time of the PCSK9 inhibitor subtypes to adverse outcomes in the matched cohort .....</i>	<i>12</i>
<i>Supplementary Table 4. Sensitivity analyses for exposure effects of PCSK9 inhibitor v.s. ezetimibe on diverse outcomes using different models.....</i>	<i>13</i>
<i>Supplementary Table 5. Sensitivity analysis of PCSK9 inhibitor v.s. ezetimibe on diverse outcomes.....</i>	<i>14</i>
<i>Supplementary Table 6. Falsification analysis: Exposure effects of PCSK9 inhibitor versus ezetimibe on new onset hip fracture in the matched cohort after 1:3 propensity score matching .....</i>	<i>16</i>



Nearest neighbor search strategy with caliper=0.1.

**Supplementary Figure 1. Propensity score matching comparisons and proportional hazard assumption testing for PCSK9 inhibitor versus ezetimibe before and after 1:3 matching with nearest neighbour search strategy with calliper of 0.1**

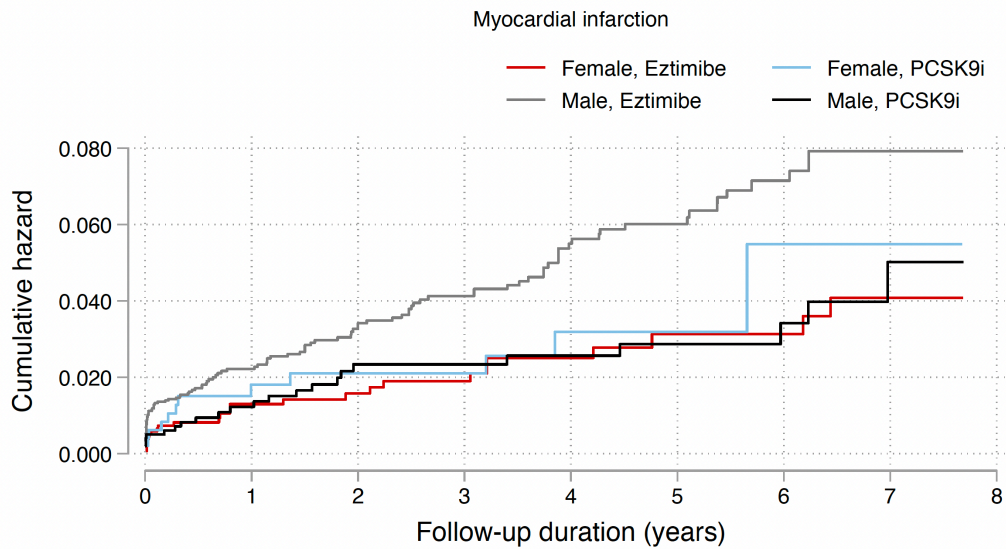
**Supplementary Figure 2. Cumulative incidence curves for MACE, and all-cause mortality stratified by patient gender at initial drug exposure of PCSK9 inhibitor and ezetimibe in the matched cohort**



Number at risk

Female, Ezetimibe	1378	814	606	475	364	273	206	116	0
Female, PCSK9i	484	328	258	212	153	115	78	46	0
Male, Ezetimibe	3053	1784	1332	1030	766	554	379	230	0
Male, PCSK9i	993	695	559	436	328	237	173	90	0

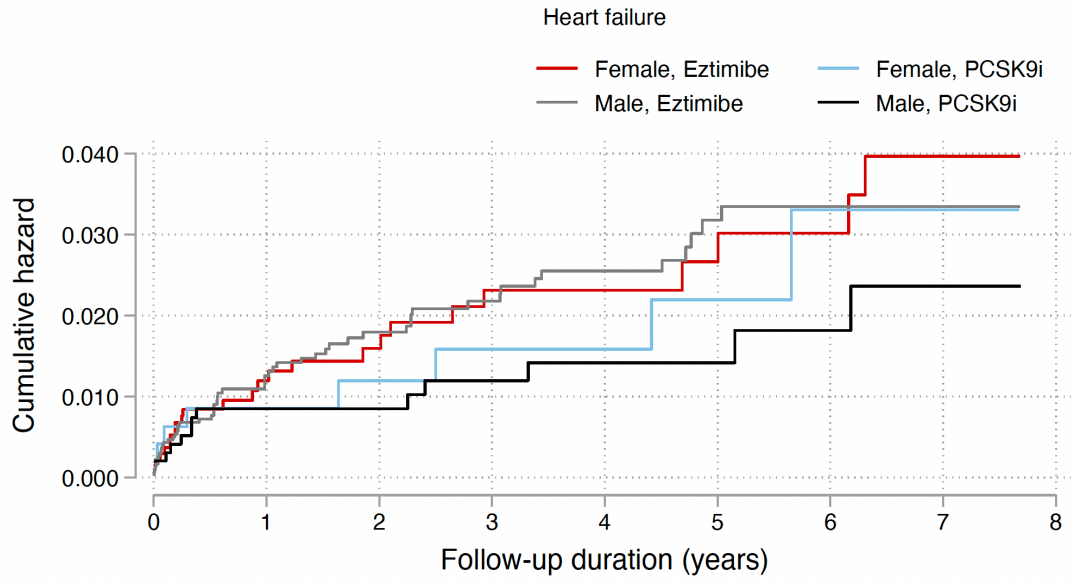
Cumulative incidence curve by drug use after propensity score matching



Number at risk

Female, Ezetimibe	1378	830	623	493	376	281	213	121	0
Female, PCSK9i	484	333	265	220	158	118	78	46	0
Male, Ezetimibe	3053	1816	1362	1058	793	575	391	240	0
Male, PCSK9i	993	702	567	446	340	245	180	95	0

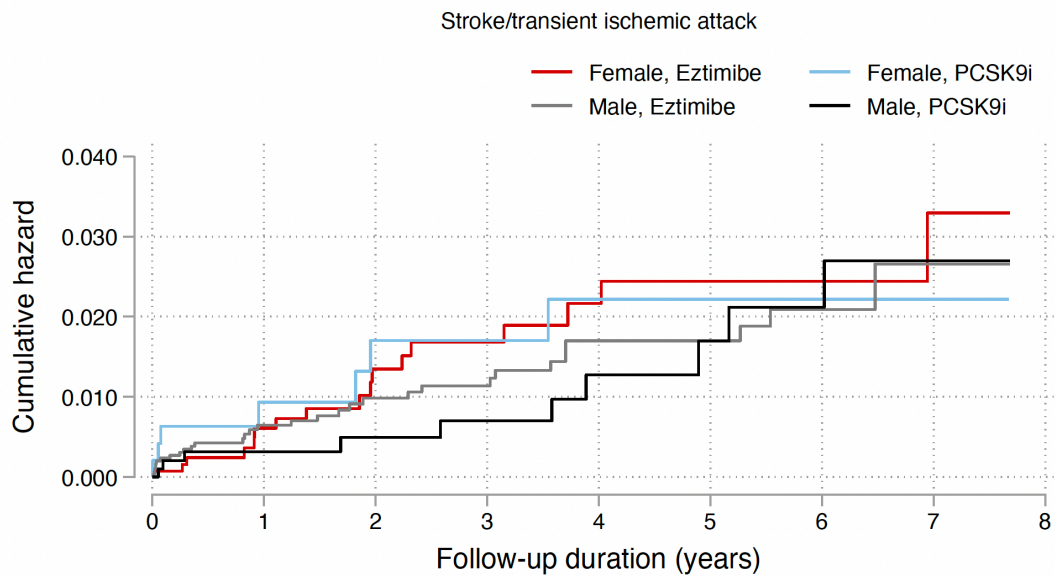
Cumulative incidence curve by drug use after propensity score matching



Number at risk

Female, Ezetimibe	1378	830	625	492	378	284	211	117	0
Female, PCSK9i	484	337	268	221	164	122	82	50	0
Male, Ezetimibe	3053	1841	1382	1081	818	598	416	256	0
Male, PCSK9i	993	708	578	453	346	250	183	95	0

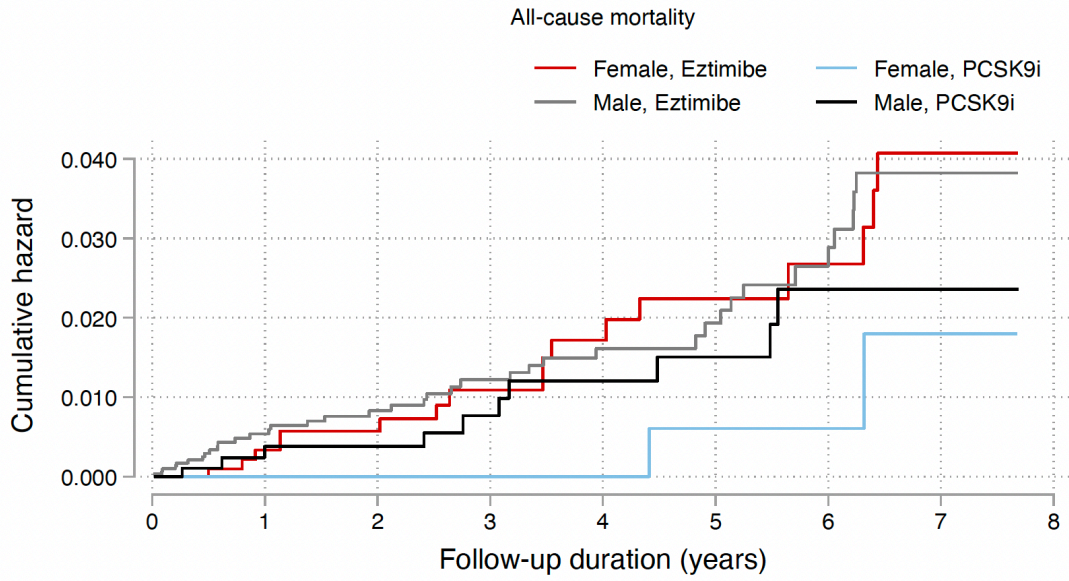
Cumulative incidence curve by drug use after propensity score matching



Number at risk

Female, Ezetimibe	1378	814	606	475	364	273	206	116	0
Female, PCSK9i	484	328	258	212	153	115	78	46	0
Male, Ezetimibe	3053	1785	1334	1031	766	554	379	230	0
Male, PCSK9i	993	695	559	436	328	237	173	90	0

Cumulative incidence curve by drug use after propensity score matching

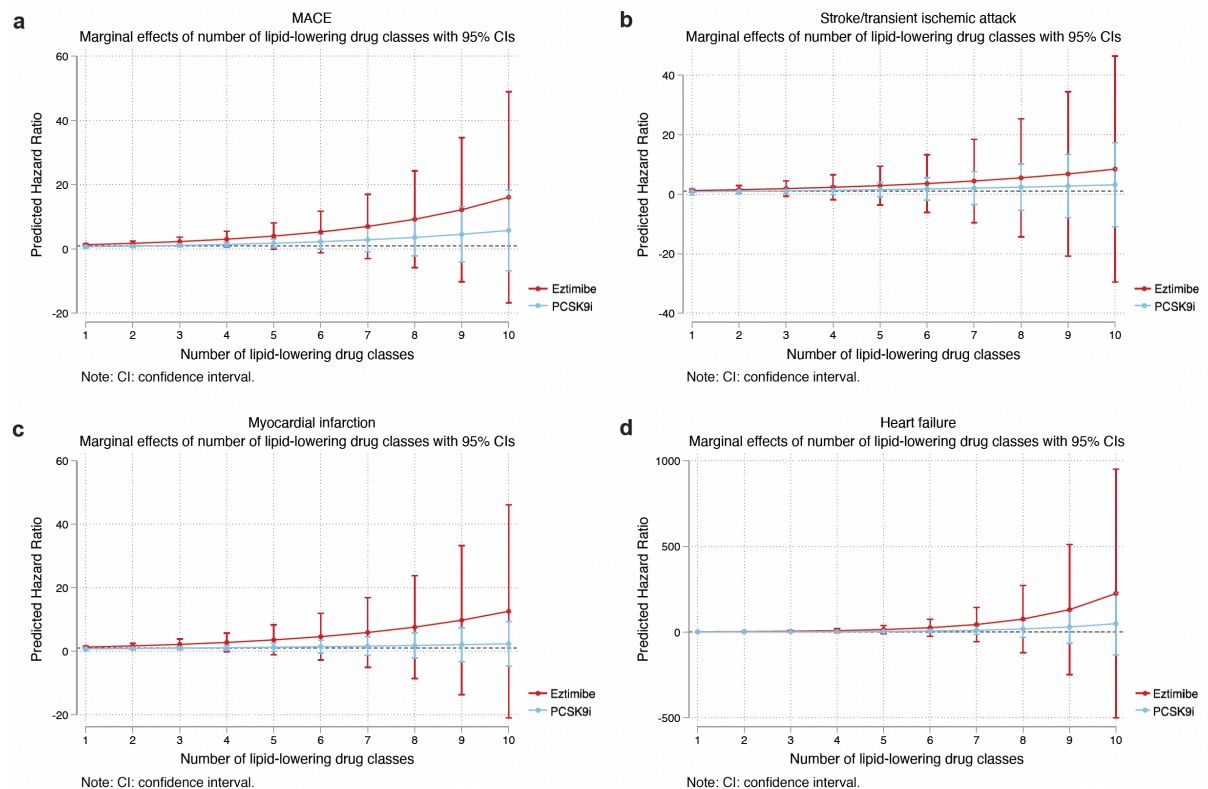
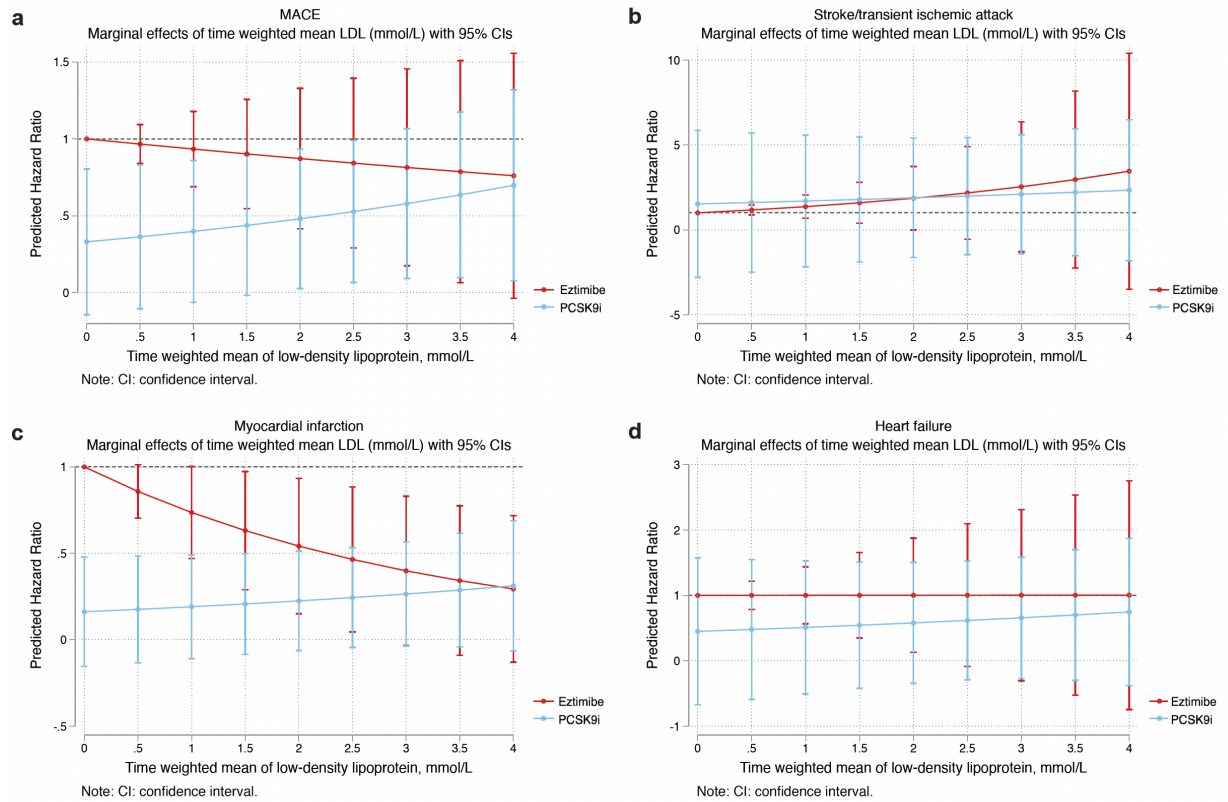


**Number at risk**

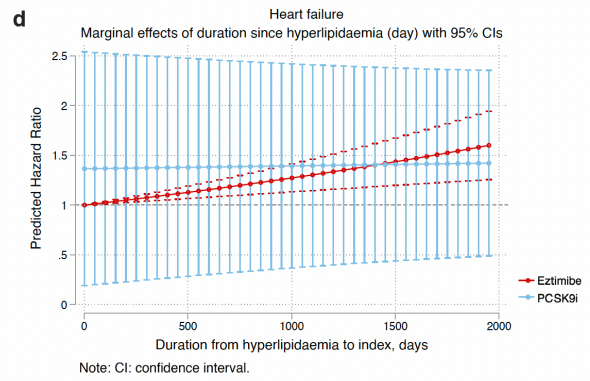
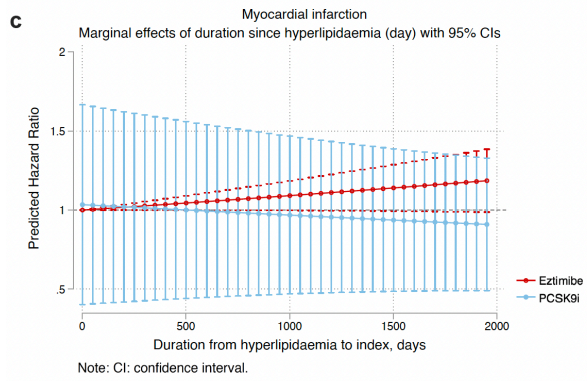
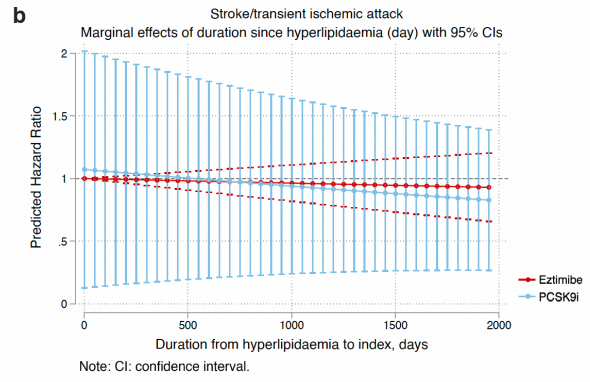
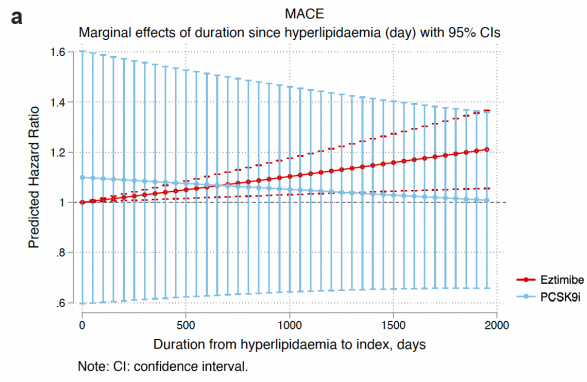
Female, Ezetimibe	1378	842	635	503	384	290	216	122	0
Female, PCSK9i	484	341	273	225	165	123	84	51	0
Male, Ezetimibe	3053	1868	1411	1109	846	622	428	263	0
Male, PCSK9i	993	713	583	458	351	253	185	98	0

Cumulative incidence curve by drug use after propensity score matching

**Supplementary figure 3. Marginal effects of time weighted mean LDL, number of prior lipid-lowering drugs, and dyslipidaemia duration with 95% CIs on adverse outcomes by drug use in the matched cohort.**







**Supplementary Table 1. The International Classification of Diseases, Clinical Modification (ICD-9) and (ICD-10) codes for definitions of past comorbidities and outcomes.**

<b>Adverse outcome of interest</b>
MACE: <ol style="list-style-type: none"> <li>1. cardiovascular mortality</li> <li>2. myocardial infarction</li> <li>3. heart failure</li> <li>4. stroke/ transient ischaemic attack</li> </ol>
<b>Cardiovascular mortality: ICD-10: I00-I78</b>
<b>Acute myocardial infarction:</b> 410 410.01 410.02 410.1 410.11 410.12 410.2 410.21 410.22 410.3 410.31 410.32 410.4 410.41 410.42 410.5 410.51 410.52 410.6 410.61 410.62 410.7 410.71 410.72 410.8 410.81 410.82 410.9 410.91 410.92
<b>Heart failure:</b> 428 428 428.1 428.2 428.2 428.21 428.22 428.23 428.3 428.3 428.31 428.32 428.33 428.4 428.4 428.41 428.42 428.43 428.9 398.91 402.01 402.11 402.91 404.01 404.03 404.11 404.13 404.91 404.93
<b>Stroke/transient ischemic attack:</b> 435 435.1 435.2 435.3 435.8 435.9 433.81 433.91 434 436 437 437.1 433.31 433.01 434.01 434.1 434.11 434.9 434.91 437.2 437.3 437.4 437.5 437.6 437.7 437.8 437.9 430 431 432 432.1 432.9
<b>Past comorbidities</b>
<b>Cancer:</b> 140-239
<b>Hypertension:</b> 401 401.1 401.9 402 402.01 402.1 402.11 402.9 402.91 403 403.01 403.1 403.11 403.9 403.91 404 404.01 404.02 404.03 404.1 404.11 404.12 404.13 404.9 404.91 404.92 404.93 405 405.01 405.09 405.1 405.11 405.19 405.9 405.91 405.99 437.2 + history of uses of anti-hypertensives
<b>Hyperlipidaemia:</b> 272.0 272.1 272.2 272.3 272.4 + history of uses of lipid-lowering drugs + lipid laboratory results
<b>Liver disease:</b> 275.1 275.0 572.0 572.4 572.1 572.3 572.8 573.0 573.4 573.8 573.9
<b>Gastrointestinal bleeding:</b> 578.9
<b>Atrial fibrillation:</b> 427.31 429.4
<b>Ischemic heart disease:</b> 410.01 410.02 410.1 410.11 410.12 410.2 410.21 410.22 410.3 410.31 410.32 410.4 410.41 410.42 410.5 410.51 410.52 410.6 410.61 410.62 410.7 410.71 410.72 410.8 410.81 410.82 410.9 410.91 410.92 411 411.1 411.8 411.81 411.89 413 413.1 413.9 414 414.01 414.02 414.03 414.04 414.05 414.06 414.07 414.1 414.11 414.12 414.19 414.2 414.3 414.4 414.8 414.9 410 412
<b>Renal diseases:</b> 582 582 582.1 582.2 582.4 582.8 582.81 582.89 582.9 583 583 583.1 583.2 583.4 583.6 583.7 585 585.1 585.2 585.3 585.4 585.5 585.6 585.9 586 588 588 588.1 588.8 588.81 588.89 588.9
<b>Diabetic retinopathy:</b> 250.5 361 362.01 362.02 362.1 362.53 362.81 362.82 362.83 369 379.23
<b>Diabetic nephropathy:</b> 250.40 250.41 250.42 250.43
<b>Diabetic neuropathy:</b> 250.6, 337.0, 337.1, 354.0 – 355.9, 356.9, 357.2, 358.1, 536.3, 564.5, 596.54, 713.5, 951.0, 951.1, 951.3
<b>Chronic obstructive pulmonary disease</b> 491.0 491.1 491.2 491.8 491.9 492.0 492.8 496
<b>Venous thromboembolism:</b> 415.1 451, 453.1 453.2 453.3 453.8 453.9
<b>Hip fracture:</b> 733.14 733.15 733.81 733.82 733.96 808 808.1 820 820.01 820.02 820.03 820.09 820.10 820.11 820.12 820.13 820.19 820.20 820.21 820.22 820.30 820.31 820.32 820.8 820.9

**Supplementary table 2. Multivariate Cox regression models with adjustments to predict adverse outcomes in the matched cohort.**

\* for  $p \leq 0.05$ , \*\* for  $p \leq 0.01$ , \*\*\* for  $p \leq 0.001$ ; HR: hazard ratio; CI: confidence interval;

**Model 1** adjusted for significant demographics.

**Model 2** adjusted for significant demographics, and past comorbidities.

**Model 3** adjusted for significant demographics, past comorbidities, duration from earliest diabetes mellitus date to initial drug exposure date, and number of prior hospitalizations.

**Model 4** adjusted for significant demographics, past comorbidities, duration of diabetes mellitus, and number of prior hospitalizations, number of anti-diabetic drugs, and non-PCSK9 inhibitor/ezetimibe medications.

**Model 5** adjusted for significant demographics, past comorbidities, duration of diabetes mellitus, and number of prior hospitalizations, number of anti-diabetic drugs, non-PCSK9 inhibitor/ezetimibe medications.

**Model 6** adjusted for significant demographics, past comorbidities, duration of diabetes mellitus, and number of prior hospitalizations, number of anti-diabetic drugs, non-PCSK9 inhibitor/ezetimibe medications, abbreviated MDRD, HbA1c, fasting glucose.

**Model 7** adjusted for significant demographics, past comorbidities, duration of diabetes mellitus, and number of prior hospitalizations, number of anti-diabetic drugs, non-PCSK9 inhibitor/ezetimibe medications, abbreviated MDRD, and time-weighted means of lipid and glucose tests.

Model	All-cause mortality HR [95% CI];P value	MACE HR [95% CI];P value	Myocardial infarction HR [95% CI];P value	Heart failure HR [95% CI];P value	Stroke/transient ischemic attack HR [95% CI];P value
Model 1	0.32[0.15-0.73];0.0017**	0.61[0.42-0.89];0.0002***	0.55[0.40-0.89];0.0011**	0.50[0.31-0.82];0.0018**	0.87[0.50-1.52];0.6360
Model 2	0.34[0.16-0.69];0.0029**	0.65[0.49-0.86];0.0027**	0.62[0.43-0.91];0.0135*	0.51[0.30-0.86];0.0112*	0.72[0.40-1.28];0.2591
Model 3	0.47[0.24-0.94];0.0321*	0.67[0.51-0.89];0.0056**	0.63[0.43-0.92];0.0155*	0.54[0.32-0.90];0.0180*	0.79[0.45-1.39];0.4100
Model 4	0.60[0.30-1.19];0.1419	0.67[0.50-0.89];0.0054**	0.63[0.43-0.93];0.0185*	0.68[0.41-1.14];0.1431	0.78[0.43-1.41];0.4083
Model 5	0.51[0.22-1.18];0.1142	0.59[0.38-0.90];0.0140*	0.60[0.33-1.08];0.0896	0.85[0.447-1.602];0.6077	0.48[0.17-1.31];0.1515
Model 6	0.39[0.15-1.02];0.0550	0.54[0.35-0.84];0.0065**	0.55[0.29-1.04];0.0671	0.85[0.438-1.610];0.5989	0.49[0.17-1.38];0.1774
Model 7	0.45[0.17-1.20];0.1101	0.59[0.37-0.92];0.0203*	0.55[0.28-1.08];0.0828	0.89[0.455-1.756];0.7459	0.50[0.18-1.41];0.1917

**Supplementary Table 3. Number of adverse outcomes and time of the PCSK9 inhibitor subtypes to adverse outcomes in the matched cohort.**

<b>Characteristics</b>	<b>Only alirocumab (N=555) Mean(SD);N or Count(%)</b>	<b>Only evolocumab (N=110) Mean(SD);N or Count(%)</b>	<b>Ezetimibe (N=4431) Mean(SD);N or Count(%)</b>
<b>All-cause mortality</b>	9(1.62%)	0(0.00%)	55(1.24%)
<b>Time to mortality, years</b>	3.1(2.5);n=555	3.2(2.4);n=110	2.6(2.5);n=4431
<b>MACE</b>	49(8.82%)	5(4.54%)	235(5.30%)
<b>Time to MACE, years</b>	2.9(2.5);n=555	3.0(2.4);n=110	2.5(2.4);n=4431
<b>Myocardial infarction</b>	27(4.86%)	3(2.72%)	139(3.13%)
<b>Time to MI, years</b>	3.0(2.5);n=555	3.1(2.4);n=110	2.6(2.4);n=4431
<b>Heart failure after drug use</b>	13(2.34%)	3(2.72%)	80(1.80%)
<b>Time to HF, years</b>	3.1(2.5);n=555	3.1(2.5);n=110	2.6(2.4);n=4431
<b>Stroke/transient ischemic attack</b>	13(2.34%)	0(0.00%)	49(1.10%)
<b>Time to Stroke/TIA, years</b>	2.9(2.5);n=555	3.0(2.4);n=110	2.5(2.4);n=4431

**Supplementary Table 4. Sensitivity analyses for exposure effects of PCSK9 inhibitor v.s. ezetimibe on diverse outcomes using different models.**

\* for  $p \leq 0.05$ , \*\* for  $p \leq 0.01$ , \*\*\* for  $p \leq 0.001$ ; HR: hazard ratio; CI: confidence interval; PS: propensity score; IPTW: inverse probability of treatment weighting, SIPTW: stable inverse probability of treatment weighting.

Model	All-cause mortality HR [95% CI];P value	MACE HR [95% CI];P value	Myocardial infarction HR [95% CI];P value	Heart failure HR [95% CI];P value	Stroke/transient ischemic attack HR [95% CI];P value
Cause-specific hazard models	0.48[0.22-1.05];0.1004	0.53[0.34-0.85];0.0014**	0.56[0.29-1.11];0.0913	0.79[0.32-1.56];0.5611	0.44[0.34-1.34];0.2322
Sub-distribution hazard models	0.51[0.13-1.01];0.1204	0.57[0.29-0.92];0.0004** *	0.52[0.34-1.09];0.1109	0.82[0.44-1.41];0.4511	0.55[0.32-1.32];0.4311
PS stratification	0.46[0.12-1.13];0.1112	0.65[0.36-0.91];0.0015**	0.65[0.25-1.24];0.2131	0.83[0.36-1.44];0.3511	0.66[0.45-1.52];0.4212
PS with IPTW	0.49[0.25-1.32];0.1604	0.56[0.25-0.88];0.0101**	0.56[0.18-1.22];0.1311	0.86[0.48-1.89];0.4551	0.69[0.32-1.72];0.2504
PS with SIPTW	0.53[0.34-1.29];0.1523	0.66[0.34-0.85];0.0107*	0.59[0.22-1.24];0.1421	0.91[0.69-1.81];0.7822	0.59[0.25-1.56];0.5521

**Supplementary Table 5. Sensitivity analysis of PCSK9 inhibitor v.s. ezetimibe on diverse outcomes.**

Adjusted for significant demographics, past comorbidities, duration of diabetes mellitus, and number of prior hospitalizations, number of anti-diabetic drugs, non-PCSK9 inhibitor/ezetimibe medications, abbreviated MDRD, and time-weighted means of lipid and glucose tests.

<b>Model</b>	<b>All-cause mortality HR [95% CI];P value</b>	<b>MACE HR [95% CI];P value</b>	<b>Myocardial infarction HR [95% CI];P value</b>	<b>Heart failure H R [95% CI];P value</b>	<b>Stroke/transient ischemic attack HR [95% CI];P value</b>
Only patients with prior MACE	0.59[0.26-1.35];0.2122	0.69[0.47-0.99];0.0469*	0.47[0.27-0.80];0.0058*	0.72[0.40-1.30];0.2781	0.79[0.36-1.77];0.5698
Exclude patients with prior MACE	0.43[0.17-1.14];0.0892	0.80[0.53-1.20];0.2834	1.04[0.62-1.76];0.8816	0.61[0.26-1.40];0.2404	0.88[0.41-1.91];0.7552
Exclude patients with less than 3-month follow-up duration	0.55[0.29-1.04];0.0663	0.74[0.56-0.97];0.0283*	0.68[0.47-0.98];0.0404*	0.68[0.42-1.11];0.1237	0.84[0.48-1.46];0.5249
Exclude patients with less than 3-month drug exposure	0.51[0.26-0.97];0.0412*	0.73[0.56-0.97];0.0270*	0.68[0.47-0.98];0.0391*	0.68[0.42-1.11];0.1210	0.83[0.48-1.45];0.5209
Exclude patients who died within 30	0.52[0.28-0.97];0.0390*	0.74[0.56-0.97];0.0308*	0.68[0.47-0.99];0.0416*	0.69[0.42-1.12];0.1322	0.84[0.48-1.46];0.5393

days after  
drug  
exposure

Exclude  
patients

with liver  
dysfunction defined  
as AST or  
ALT >3×  
ULN

0.41[0.20-  
0.83];0.0137  
\*

0.70[0.53-  
0.93];0.0153  
\*

0.65[0.44-  
0.95];0.0261\*

0.61[0.36-  
1.04];0.070  
1

0.79[0.44-  
1.42];0.4286

Exclude  
patients at  
the top or  
bottom 5%  
of  
propensity  
score  
matching

0.53[0.28-  
1.00];0.0508

0.74[0.56-  
0.97];0.0315  
\*

0.68[0.47-  
0.99];0.0438\*

0.69[0.42-  
1.12];0.129  
5

0.84[0.48-  
1.46];0.5341

**Supplementary Table 6. Falsification analysis: Exposure effects of PCSK9 inhibitor versus ezetimibe on new onset hip fracture in the matched cohort after 1:3 propensity score matching.**

\* for  $p \leq 0.05$ , \*\* for  $p \leq 0.01$ , \*\*\* for  $p \leq 0.001$ ; HR: hazard ratio; CI: confidence interval

Adjusted for significant demographics, past comorbidities, duration of diabetes mellitus, and number of prior hospitalizations, number of anti-diabetic drugs, non-PCSK9 inhibitor/ezetimibe medications, abbreviated MDRD, and time-weighted means of lipid and glucose tests.

	<b>Number of hip fracture events Count(%)</b>	<b>Time to hip fracture, days (IQR)</b>	<b>Hip fracture after drug use HR[95% CI];P value</b>
Ezetimibe (N=4431)	28(0.68%)	582(180-1645)	1 [Reference]
PCSK9 inhibitor (N=1477)	17(1.15%)	942(230-1985)	1.42[0.78-2.69];0.3111
Alirocumab (N=1367)	13(0.95%)	943(223-1986)	1.45[0.89-2.98];0.3019
Evolocumab (N=922)	5(0.54%)	935(232-1985)	0.96[0.55-2.15];0.8155