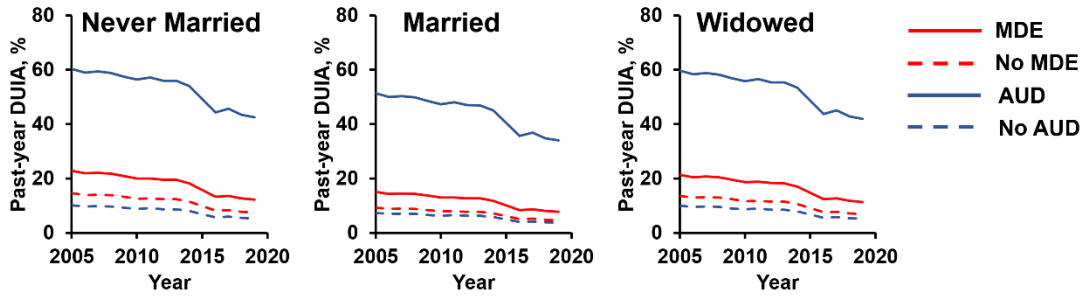


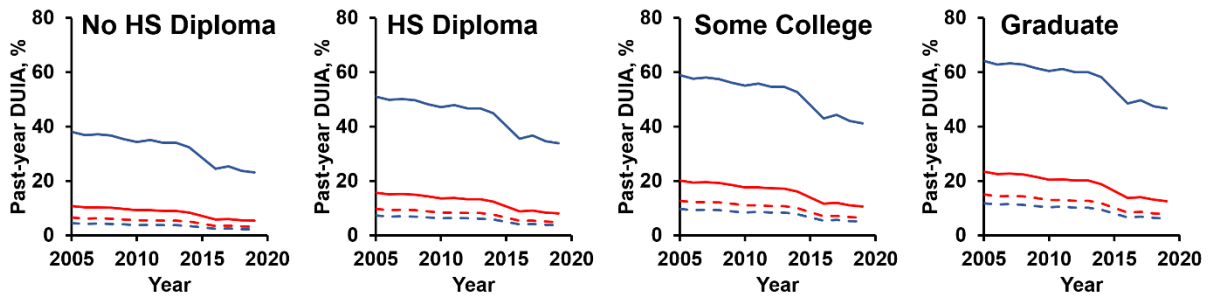
Driving Under the Influence of Alcohol in People with Major Depressive Episodes and Alcohol Use Disorder

SUPPLEMENTAL INFORMATION

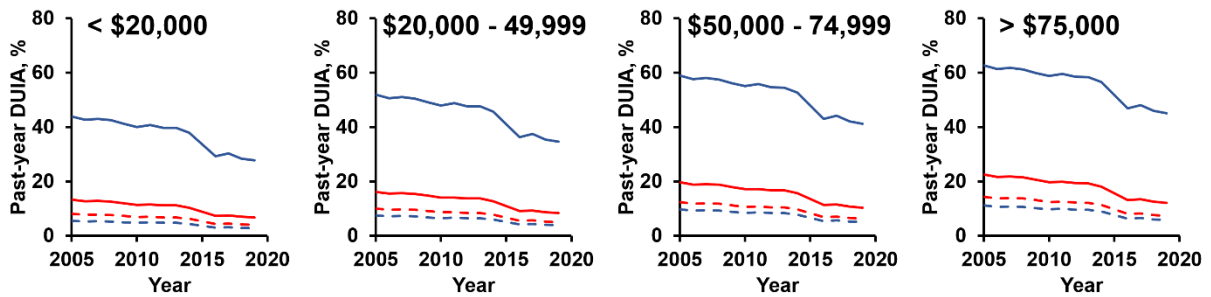
(A) Marital Status



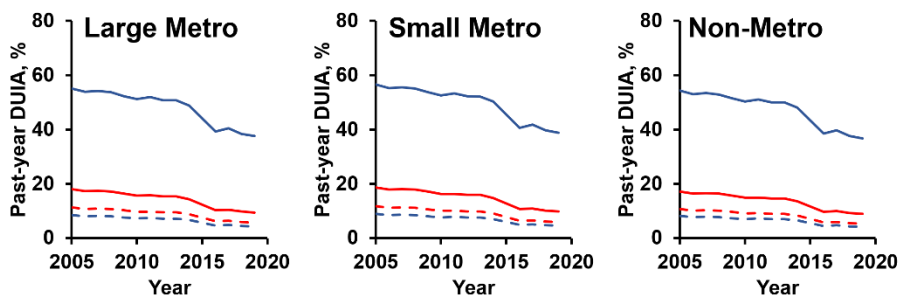
(B) Education



(C) Income

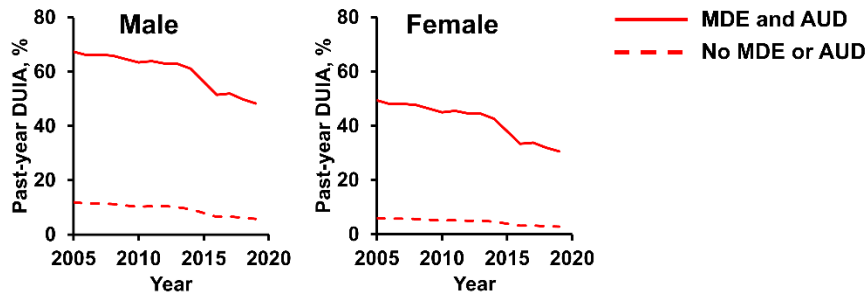


(D) Metropolitan Status

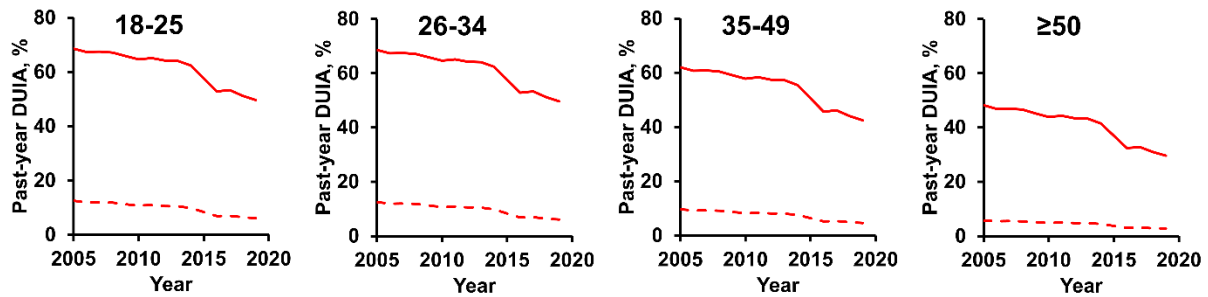


Supplemental Figure 1. Trends in adjusted past-year prevalence of self-reported driving under the influence of alcohol among US adults with or without MDE or AUD, by demographic and socioeconomic characteristics. (A) Past-year prevalence of DUIA stratified according to marital status. (B) Past-year prevalence of DUIA stratified according to education. (C) Past-year prevalence of DUIA stratified according to income. (D) Past-year prevalence of DUIA stratified according to metropolitan status. The figure legend on the top right corner applies to all sub-graphs (A to D). Due to the changes in the questionnaire that asked questions about DUIA, the 2015 data on DUIA were not available from the NSDUH 2002-2019 public use data file.

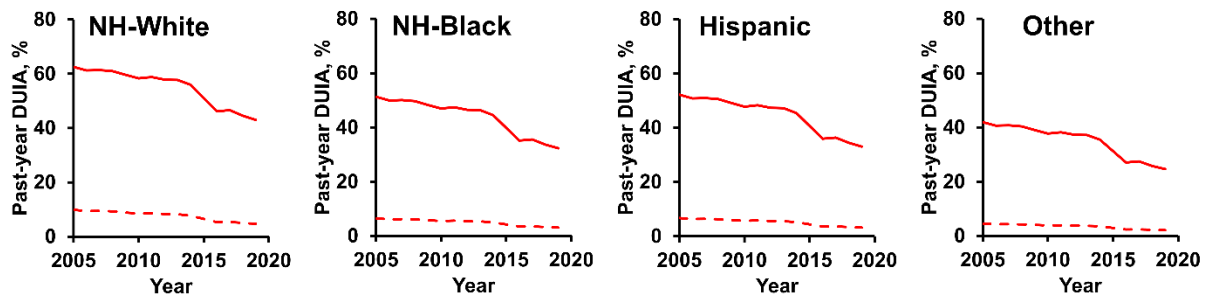
(A) Sex



(B) Age

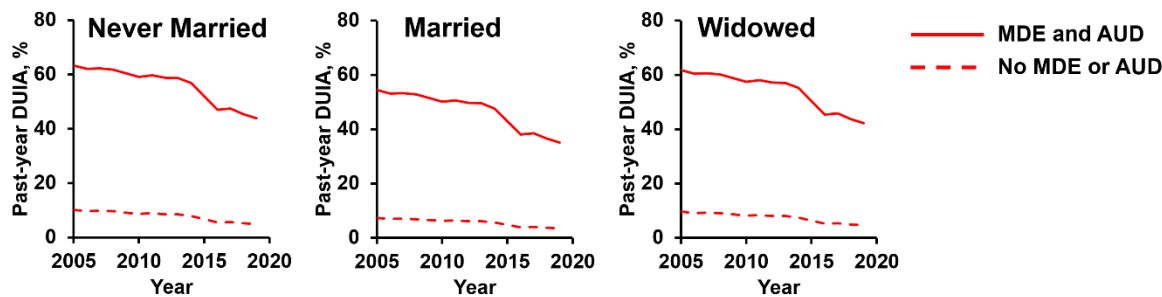


(C) Race and Ethnicity

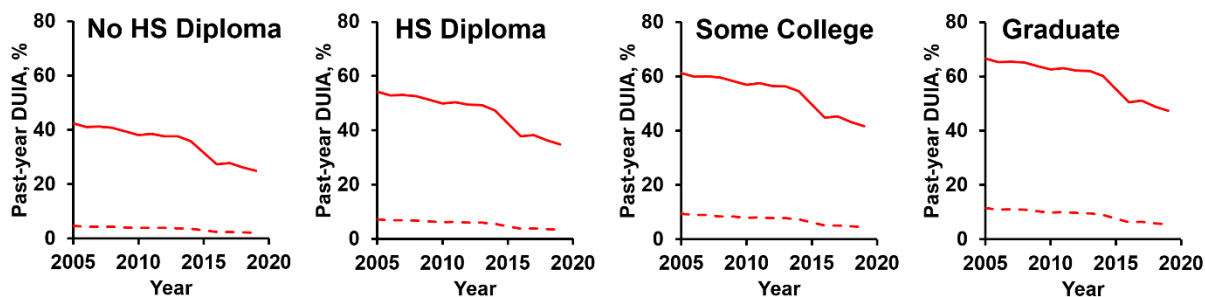


Supplemental Figure 2. Trends in adjusted past-year prevalence of self-reported driving under the influence of alcohol among US adults with both MDE and AUD or neither, by demographic characteristics. (A) Past-year prevalence of DUIA stratified according to sex. (B) Past-year prevalence of DUIA stratified according to age. (C) Past-year prevalence of DUIA stratified according to race and ethnicity. The figure legend on the top right corner applies to all sub-graphs (A to C). Due to the changes in the questionnaire that asked questions about DUIA, the 2015 data on DUIA were not available from the NSDUH 2002-2019 public use data file.

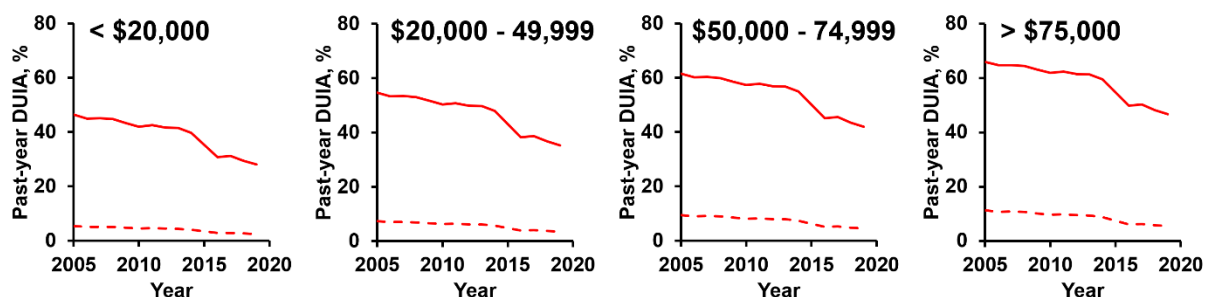
(A) Marital Status



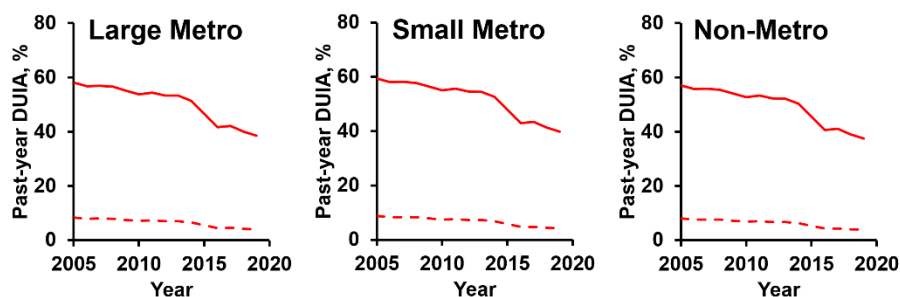
(B) Education



(C) Income



(D) Metropolitan Status



Supplemental Figure 3. Trends in adjusted past-year prevalence of self-reported driving under the influence of alcohol among US adults with both MDE and AUD or neither, by demographic and socioeconomic characteristics. (A) Past-year prevalence of DUIA stratified

according to marital status. (B) Past-year prevalence of DUIA stratified according to education. (C) Past-year prevalence of DUIA stratified according to income. (D) Past-year prevalence of DUIA stratified according to metropolitan status. The figure legend on the top right corner applies to all sub-graphs (A to D). Due to the changes in the questionnaire that asked questions about DUIA, the 2015 data on DUIA were not available from the NSDUH 2002-2019 public use data file.

Supplemental Table 1. Trends in past-year adjusted prevalence of driving under the influence of alcohol (DUIA) and 95% CI by past-year major depressive episode (MDE) and alcohol use disorder (AUD), from 2005 to 2019.

Year	MDE ¹	No MDE ²	AUD ³	No AUD ⁴	MDE and AUD ⁵	No MDE or AUD ⁶
2005	18.1 [17.24-18.96]	11.32 [10.82-11.82]	55.41 [53.91-56.91]	8.53 [8.1-8.95]	58.33 [56.34-60.32]	8.42 [8.02-8.82]
2006	17.33 [16.47-18.2]	10.8 [10.34-11.27]	54.09 [52.56-55.62]	8.12 [7.73-8.52]	57 [54.79-59.21]	8.01 [7.63-8.38]
2007	17.5 [16.61-18.39]	10.91 [10.43-11.4]	54.49 [52.8-56.17]	8.24 [7.79-8.69]	57.13 [54.84-59.42]	8.05 [7.64-8.46]
2008	17.27 [16.36-18.17]	10.76 [10.23-11.28]	53.98 [52.26-55.69]	8.09 [7.66-8.52]	56.71 [54.41-59.02]	7.92 [7.51-8.33]
2009	16.52 [15.72-17.32]	10.26 [9.8-10.71]	52.56 [50.94-54.19]	7.68 [7.29-8.06]	55.33 [53.23-57.42]	7.52 [7.16-7.89]
2010	15.71 [14.86-16.57]	9.72 [9.27-10.17]	51.44 [49.81-53.07]	7.36 [6.93-7.79]	53.99 [51.9-56.08]	7.15 [6.78-7.53]
2011	15.79 [14.95-16.62]	9.77 [9.3-10.24]	52.21 [50.46-53.96]	7.58 [7.15-8]	54.51 [51.96-57.07]	7.3 [6.89-7.7]
2012	15.41 [14.68-16.15]	9.52 [9.11-9.94]	51.08 [49.62-52.55]	7.27 [6.91-7.62]	53.56 [51.5-55.61]	7.04 [6.7-7.38]
2013	15.38 [14.51-16.25]	9.5 [8.96-10.04]	51.03 [49.06-53]	7.25 [6.82-7.69]	53.42 [50.84-56]	7 [6.57-7.44]
2014	14.33 [13.53-15.13]	8.81 [8.4-9.23]	49.16 [47.62-50.68]	6.76 [6.4-7.13]	51.58 [49.28-53.88]	6.54 [6.2-6.87]
2016	10.29 [9.78-10.8]	6.21 [5.94-6.49]	39.55 [38.2-40.9]	4.68 [4.45-4.91]	41.84 [39.84-43.85]	4.51 [4.28-4.72]
2017	10.53 [9.99-11.06]	6.36 [6.07-6.66]	40.75 [39.34-42.16]	4.91 [4.67-5.14]	42.29 [40.22-44.37]	4.59 [4.37-4.82]
2018	9.81 [9.19-10.42]	5.91 [5.58-6.24]	38.62 [36.92-40.31]	4.51 [4.24-4.78]	40.25 [37.84-42.66]	4.24 [3.99-4.44]
2019	9.44 [8.79-10.08]	5.68 [5.32-6.04]	37.81 [36.06-39.56]	4.36 [4.06-4.66]	38.75 [36.37-41.14]	3.99 [3.71-4.27]

¹ MDE: AAPC = -4.9 (95% CI, -6.3 to -3.6), $p < 0.001$

² No MDE: AAPC = -5.2 (95% CI, -6.7 to -3.8), $p < 0.001$

³ AUD: AAPC = -3.0 (95% CI, -3.8 to -2.1), $p < 0.001$

⁴ No AUD: AAPC = -5.2 (95% CI, -6.6 to -3.7), $p < 0.001$

⁵ MDE and AUD: AAPC = -3.1 (95% CI, -3.8 to -2.4), $p < 0.001$

⁶ No MDE or AUD: AAPC = -5.6 (95% CI, -7.0 to -4.2), $p < 0.001$

Supplemental Table 2. Trends in past-year adjusted prevalence of driving under the influence of alcohol (DUIA) and 95% CI by past-year major depressive episode (MDE) and alcohol use disorder (AUD), stratified by sex, from 2005 to 2019.

A. Male

Year	MDE ¹	No MDE ²	AUD ³	No AUD ⁴	MDE and AUD ⁵	No MDE or AUD ⁶
2005	24.46 [23.32-25.61]	15.76 [15.05-16.47]	62.77 [61.26-64.28]	11.23 [10.65-11.81]	67.38 [65.55-69.22]	11.94 [11.37-12.52]
2006	23.51 [22.36-24.65]	15.07 [14.42-15.73]	61.52 [59.99-63.04]	10.71 [10.17-11.25]	66.17 [64.11-68.23]	11.38 [10.84-11.93]
2007	23.72 [22.58-24.85]	15.22 [14.57-15.87]	61.89 [60.25-63.54]	10.86 [10.27-11.46]	66.29 [64.2-68.38]	11.44 [10.87-12]
2008	23.43 [22.28-24.57]	15.02 [14.31-15.72]	61.41 [59.74-63.08]	10.67 [10.1-11.23]	65.91 [63.79-68.03]	11.27 [10.7-11.83]
2009	22.49 [21.45-23.53]	14.35 [13.72-14.98]	60.05 [58.44-61.66]	10.14 [9.62-10.65]	64.64 [62.69-66.48]	10.72 [10.2-11.23]
2010	21.46 [20.28-22.64]	13.63 [12.95-14.31]	58.97 [57.25-60.69]	9.73 [9.13-10.34]	63.39 [61.34-65.45]	10.21 [9.64-10.79]
2011	21.55 [20.44-22.66]	13.7 [13.03-14.36]	59.71 [57.95-61.47]	10.01 [9.43-10.58]	63.88 [61.46-66.3]	10.4 [9.82-10.99]
2012	21.08 [20.1-22.06]	13.37 [12.78-13.95]	58.62 [57.13-60.12]	9.61 [9.12-10.09]	62.99 [61.02-64.96]	10.52 [9.55-10.55]
2013	21.04 [19.94-22.13]	13.34 [12.62-14.05]	58.57 [56.67-60.48]	9.59 [9.03-10.15]	62.86 [60.45-65.27]	10 [9.41-10.6]
2014	19.69 [18.63-20.76]	12.4 [11.82-12.99]	56.74 [55.16-58.32]	8.96 [8.47-9.45]	61.12 [58.9-63.34]	9.36 [8.87-9.84]
2016	14.39 [13.7-15.09]	8.85 [8.46-9.24]	47.02 [45.58-48.47]	6.24 [5.93-6.56]	51.5 [49.42-53.57]	6.52 [6.21-6.82]
2017	14.71 [13.98-15.44]	9.06 [8.64-9.48]	48.26 [46.76-49.77]	6.54 [6.23-6.86]	51.96 [49.82-54.1]	6.63 [6.31-6.96]
2018	13.75 [12.92-14.57]	8.43 [7.98-8.88]	46.05 [44.26-47.83]	6.02 [5.67-6.37]	49.85 [47.36-52.34]	6.13 [5.78-6.47]
2019	13.25 [12.37-14.13]	8.11 [7.6-8.61]	45.2 [43.32-47.08]	5.83 [5.43-6.23]	48.29 [45.77-50.81]	5.78 [5.38-6.18]

¹ MDE: AAPC=-4.7 (95% CI, -6.0 to -3.5), $p < 0.001$

² No MDE: AAPC = -5.1 (95% CI, -6.5 to -3.8), $p < 0.001$

³ AUD: AAPC = -2.6 (95% CI, -3.3 to -1.8), $p < 0.001$

⁴ No AUD: AAPC = -5.1 (95% CI, -6.6 to -3.5), $p < 0.001$

⁵ MDE and AUD: AAPC = -2.5 (95% CI, -3.1 to -1.9), $p < 0.001$

⁶ No MDE or AUD: AAPC = -5.5 (95% CI, -6.9 to -4.1), $p < 0.001$

B. Female

Year	MDE ¹	No MDE ²	AUD ³	No AUD ⁴	MDE and AUD ⁵	No MDE or AUD ⁶
2005	13.4 [12.73-14.08]	8.21 [7.83-8.59]	48.33 [46.81-49.86]	6.56 [6.22-6.9]	49.35 [47.27-51.42]	6.01 [5.71-6.32]
2006	12.81 [12.12-13.49]	7.82 [7.46-8.18]	47 [45.43-48.57]	6.24 [5.92-6.56]	47.98 [45.71-50.26]	5.71 [5.43-5.99]
2007	12.94 [12.21-13.66]	7.9 [7.51-8.29]	47.4 [45.65-49.15]	6.33 [5.96-6.7]	48.12 [45.73-40.41]	5.74 [5.42-6.06]
2008	12.76 [12.02-13.49]	7.79 [7.37-8.2]	46.89 [45.12-48.66]	6.21 [5.86-6.57]	47.7 [45.3-50.09]	5.65 [5.33-5.97]
2009	12.18 [11.54-12.82]	7.41 [7.06-7.77]	45.48 [43.81-47.14]	5.89 [5.56-6.21]	46.29 [44.13-48.45]	5.36 [5.07-5.64]
2010	11.55 [10.91-12.19]	7.01 [6.69-7.33]	44.37 [42.8-45.93]	5.65 [5.32-5.97]	44.96 [42.91-47]	5.09 [4.83-5.35]
2011	11.61 [10.95-12.26]	7.05 [6.69-7.4]	45.12 [43.37-46.87]	5.81 [5.47-6.15]	45.48 [42.91-48.05]	5.19 [4.9-5.49]
2012	11.32 [10.74-11.9]	6.87 [6.55-7.19]	44.01 [42.53-45.5]	5.57 [5.28-5.86]	44.53 [42.46-46.6]	5.01 [4.75-5.26]
2013	11.29 [10.59-12]	6.85 [6.42-7.28]	43.96 [41.94-45.98]	5.56 [5.19-5.92]	44.39 [41.76-47.02]	4.98 [4.64-5.32]
2014	10.49 [9.87-11.11]	6.34 [6.02-6.66]	42.12 [40.6-43.64]	5.18 [4.89-5.47]	42.58 [40.3-44.85]	4.64 [4.39-4.89]
2016	7.44 [7.04-7.83]	4.44 [4.22-4.65]	33 [31.69-34.31]	3.56 [3.37-3.76]	33.36 [31.49-35.24]	3.18 [3.02-3.35]
2017	7.61 [7.2-8.03]	4.54 [4.31-4.77]	34.11 [32.74-35.47]	3.74 [3.55-3.93]	33.78 [31.83-35.73]	3.24 [3.07-3.41]
2018	7.08 [6.6-7.55]	4.21 [3.96-4.47]	32.14 [30.51-33.76]	3.43 [3.21-3.65]	31.92 [29.69-34.15]	2.99 [2.8-3.18]
2019	6.8 [6.31-7.29]	4.04 [3.78-4.31]	31.4 [29.75-33.04]	3.32 [3.08-3.56]	30.58 [28.41-32.74]	2.81 [2.6-3.02]

¹ MDE: AAPC = -5.2 (95% CI, -6.6 to -3.9), $p < 0.001$

² No MDE: AAPC = -5.4 (95% CI, -6.8 to -4.1), $p < 0.001$

³ AUD: AAPC = -3.3 (95% CI, -4.3 to -2.4), $p < 0.001$

⁴ No AUD: AAPC = -5.2 (95% CI, -6.7 to -3.7), $p < 0.001$

⁵ MDE and AUD: AAPC = -3.6 (95% CI, -4.4 to -2.7), $p < 0.001$

⁶ No MDE or AUD: AAPC = -5.7 (95% CI, -7.1 to -4.2), $p < 0.001$

Supplemental Table 3. Trends in past-year adjusted prevalence of driving under the influence of alcohol (DUIA) and 95% CI by past-year major depressive episode (MDE) and alcohol use disorder (AUD), stratified by age, from 2005 to 2019.

A. 18 to 25 years

Year	MDE ¹	No MDE ²	AUD ³	No AUD ⁴	MDE and AUD ⁵	No MDE or AUD ⁶
2005	27.45 [26.19-28.72]	17.94 [17.13-18.75]	64.96 [63.51-66.4]	12.21 [11.57-12.86]	68.56 [66.64-70.47]	12.52 [11.9-13.15]
2006	26.42 [25.17-27.67]	17.18 [16.44-17.92]	63.74 [62.26-65.22]	11.65 [11.05-12.25]	67.37 [65.25-69.49]	11.94 [11.35-12.53]
2007	26.64 [25.29-28]	17.34 [16.51-18.17]	64.1 [62.04-65.81]	11.82 [11.1-12.53]	67.49 [65.25-69.73]	11.99 [11.31-12.67]
2008	26.33 [24.99-27.67]	17.11 [16.25-17.97]	63.63 [61.91-65.35]	11.6 [10.92-12.29]	67.11 [64.88-69.35]	11.82 [11.16-12.47]
2009	25.31 [24.14-26.49]	16.37 [15.64-17.1]	62.31 [60.72-63.9]	11.04 [10.45-11.62]	65.86 [63.81-67.91]	11.24 [10.66-11.82]
2010	24.2 [22.95-25.45]	15.57 [14.85-16.29]	61.25 [59.59-62.9]	10.6 [9.94-11.26]	64.64 [62.53-66.75]	10.72 [10.11-11.33]
2011	24.3 [23.04-25.56]	15.64 [14.87-16.41]	61.97 [60.25-63.69]	10.89 [10.25-11.54]	65.12 [62.64-67.6]	10.92 [10.87-11.55]
2012	23.79 [22.69-24.88]	15.27 [14.6-15.94]	60.91 [59.49-62.32]	10.47 [9.94-11]	64.24 [62.21-66.27]	10.55 [10.03-11.08]
2013	23.74 [22.4-25.08]	15.24 [14.34-16.14]	60.86 [58.96-62.76]	10.45 [9.81-11.09]	64.11 [61.6-66.63]	10.5 [9.83-11.17]
2014	22.27 [21.08-23.45]	14.2 [13.53-14.87]	59.05 [57.5-60.61]	9.77 [9.21-10.32]	62.4 [60.09-64.7]	9.83 [9.29-10.36]
2016	16.42 [15.59-17.25]	10.19 [9.71-10.67]	49.39 [47.85-50.93]	6.82 [6.44-7.21]	52.84 [50.61-55.08]	6.85 [6.5-7.21]
2017	16.77 [15.9-17.64]	10.42 [9.91-10.94]	50.64 [49.05-52.22]	7.15 [6.76-7.53]	53.31 [50.99-55.62]	6.97 [6.59-7.35]
2018	15.7 [14.73-16.68]	9.71 [9.17-10.26]	48.42 [46.55-50.28]	6.58 [6.16-7]	51.2 [48.56-53.85]	6.45 [6.05-6.84]
2019	15.14 [14.16-16.12]	9.34 [8.77-9.92]	47.56 [45.7-49.43]	6.37 [5.93-6.81]	49.64 [47.04-52.24]	6.08 [5.66-6.5]

¹ MDE: AAPC = -4.6 (95% CI, -5.7 to -3.4), $p < 0.001$

² No MDE: AAPC = -5.0 (95% CI, -6.3 to -3.7), $p < 0.001$

³ AUD: AAPC = -2.4 (95% CI, -3.1 to -1.7), $p < 0.001$

⁴ No AUD: AAPC = -4.9 (95% CI, -6.3 to -3.5), $p < 0.001$

⁵ MDE and AUD: AAPC = -2.4 (95% CI, -3.0 to -1.9), $p < 0.001$

⁶ No MDE or AUD: AAPC = -5.4 (95% CI, -6.7 to -4.1), $p < 0.001$

B. 26 to 34 years

Year	MDE ¹	No MDE ²	AUD ³	No AUD ⁴	MDE and AUD ⁵	No MDE or AUD ⁶
2005	26.88 [25.72-28.04]	17.52 [16.73-18.3]	65.7 [64.2-67.2]	12.57 [11.93-13.2]	68.55 [66.77-70.33]	12.52 [11.89-13.15]
2006	25.86 [24.69-27.04]	16.77 [16.04-17.51]	64.49 [62.96-66.01]	11.99 [11.4-12.58]	67.36 [65.37-69.35]	11.93 [11.35-12.52]
2007	26.09 [24.89-27.28]	16.93 [16.18-17.69]	64.85 [63.19-66.51]	12.16 [11.49-12.83]	67.48 [65.44-69.51]	11.99 [11.38-12.6]
2008	25.78 [24.52-27.03]	16.71 [15.86-17.55]	64.38 [62.65-66.12]	11.94 [11.28-12.61]	67.11 [65-69.21]	11.81 [11.17-12.46]
2009	24.77 [23.62-25.93]	15.98 [15.21-16.75]	63.07 [61.31-64.83]	11.36 [10.72-12]	65.85 [63.85-67.85]	11.24 [10.61-11.87]
2010	23.67 [22.46-24.89]	15.19 [14.45-15.94]	62.02 [60.28-63.75]	10.91 [10.24-11.59]	64.63 [62.64-66.61]	10.71 [10.1-11.33]
2011	23.77 [22.56-24.99]	15.26 [14.47-16.06]	62.74 [60.86-64.61]	11.22 [10.52-11.91]	65.11 [62.69-67.53]	10.92 [10.25-11.58]
2012	23.27 [22.29-24.24]	14.9 [14.27-15.53]	61.68 [60.2-63.16]	10.78 [10.26-11.3]	64.23 [62.36-66.1]	10.55 [10.03-11.06]
2013	23.22 [21.98-24.46]	14.87 [14-15.74]	61.63 [59.57-63.69]	10.76 [10.06-11.45]	64.1 [61.66-66.55]	10.5 [9.8-11.19]
2014	21.77 [20.66-22.89]	13.85 [13.19-14.51]	59.84 [58.21-61.48]	10.06 [9.5-10.62]	62.39 [60.23-64.54]	9.82 [9.3-10.34]
2016	16.03 [15.28-16.78]	9.93 [9.47-10.39]	50.21 [48.63-51.79]	7.03 [6.66-7.4]	52.83 [50.77-54.89]	6.85 [6.51-7.2]
2017	16.37 [15.6-17.15]	10.16 [9.67-10.64]	51.45 [49.86-53.05]	7.37 [7.01-7.73]	53.3 [51.2-55.4]	6.97 [6.62-7.32]
2018	15.32 [14.45-16.19]	9.46 [8.96-9.97]	49.23 [47.35-51.11]	6.78 [6.38-7.19]	51.19 [48.74-53.65]	6.44 [6.07-6.82]
2019	14.77 [13.86-15.69]	9.1 [8.54-9.66]	48.37 [46.47-50.28]	6.57 [6.13-7.01]	49.63 [47.17-52.08]	6.08 [5.66-6.49]

¹ MDE: AAPC = -4.6 (95% CI, -5.8 to -3.4), $p < 0.001$

² No MDE: AAPC = -5.0 (95% CI, -6.3 to -3.7), $p < 0.001$

³ AUD: AAPC = -2.3 (95% CI, -3.0 to -1.7), $p < 0.001$

⁴ No AUD: AAPC = -4.9 (95% CI, -6.3 to -3.5), $p < 0.001$

⁵ MDE and AUD: AAPC = -2.4 (95% CI, -3.0 to -1.9), $p < 0.001$

⁶ No MDE or AUD: AAPC = -5.4 (95% CI, -6.7 to -4.0), $p < 0.001$

C. 35 to 49 years

Year	MDE¹	No MDE²	AUD³	No AUD⁴	MDE and AUD⁵	No MDE or AUD⁶
2005	21.02 [20.01-22.04]	13.33 [12.7-13.95]	59.66 [58.05-61.27]	9.99 [9.44-10.54]	62.03 [60.08-63.98]	9.69 [9.19-10.19]
2006	20.17 [19.18-21.15]	12.73 [12.18-13.29]	58.37 [56.82-59.92]	9.52 [9.05-10]	60.73 [58.63-62.84]	9.22 [8.79-9.65]
2007	20.35 [19.28-21.42]	12.86 [12.23-13.49]	58.76 [56.97-60.55]	9.66 [9.08-10.23]	60.86 [58.6-63.12]	9.26 [8.75-9.78]
2008	20.09 [19.08-21.1]	12.68 [12.07-13.29]	58.26 [56.57-59.96]	9.48 [8.98-9.98]	60.46 [58.27-62.65]	9.12 [8.66-9.59]
2009	19.25 [18.37-20.13]	12.1 [11.58-12.63]	56.88 [55.29-58.46]	9.01 [8.57-9.44]	59.1 [57.14-61.06]	8.67 [8.26-9.07]
2010	18.34 [17.4-19.28]	11.48 [10.98-11.99]	55.77 [54.16-57.38]	8.64 [8.15-9.14]	57.79 [55.82-59.77]	8.25 [7.83-8.67]
2011	18.42 [17.46-19.38]	11.54 [10.97-12.1]	56.52 [54.76-58.28]	8.89 [8.39-9.39]	58.31 [55.83-60.78]	8.41 [7.95-8.89]
2012	18 [17.15-18.86]	11.25 [10.75-11.76]	55.42 [53.89-56.94]	8.53 [8.09-8.97]	57.37 [55.36-59.38]	8.12 [7.71-8.53]
2013	17.96 [16.98-18.95]	11.23 [10.59-11.87]	55.36 [53.38-57.34]	8.51 [8-9.03]	57.24 [54.73-59.74]	8.08 [7.57-8.58]
2014	16.77 [15.84-17.71]	10.43 [9.92-10.94]	53.5 [51.89-55.12]	7.95 [7.5-8.4]	55.42 [53.16-57.68]	7.55 [7.14-7.95]
2016	12.14 [11.55-12.74]	7.39 [7.06-7.73]	43.78 [42.33-45.23]	5.52 [5.24-5.8]	45.64 [43.63-47.64]	5.22 [4.97-5.48]
2017	12.41 [11.79-13.04]	7.57 [7.21-7.93]	45.01 [43.47-46.55]	5.79 [5.49-6.08]	46.1 [44-48.19]	5.32 [5.05-5.59]
2018	11.58 [10.85-12.32]	7.03 [6.63-7.44]	42.82 [40.97-44.66]	5.32 [4.99-5.65]	44.01 [41.54-46.48]	4.91 [4.61-5.21]
2019	11.15 [10.41-11.9]	6.76 [6.33-7.19]	41.98 [40.13-43.83]	5.15 [4.79-5.51]	42.48 [40.06-44.89]	4.62 [4.3-4.94]

¹ MDE: AAPC = -4.9 (95% CI, -6.2 to -3.6), $p < 0.001$

² No MDE: AAPC = -5.2 (95% CI, -3.8 to -7.3), $p < 0.001$

³ AUD: AAPC = -2.7 (95% CI, -3.5 to -1.9), $p < 0.001$

⁴ No AUD: AAPC = -5.0 (95% CI, -6.4 to -3.6), $p < 0.001$

⁵ MDE and AUD: AAPC = -2.8 (95% CI, -3.5 to -2.2), $p < 0.001$

⁶ No MDE or AUD: AAPC = -5.5 (95% CI, -6.9 to -4.1), $p < 0.001$

D. ≥ 50 years

Year	MDE ¹	No MDE ²	AUD ³	No AUD ⁴	MDE and AUD ⁵	No MDE or AUD ⁶
2005	12 [11.33-12.66]	7.3 [6.93-7.67]	45.41 [43.81-47.01]	5.88 [5.55-6.2]	48.23 [46.09-50.37]	5.76 [5.46-6.06]
2006	11.45 [10.77-12.14]	6.95 [6.6-7.31]	44.09 [42.41-45.78]	5.59 [5.26-5.91]	46.87 [44.48-49.25]	5.47 [5.17-5.78]
2007	11.57 [10.9-12.24]	7.03 [6.68-7.37]	44.49 [42.75-46.23]	5.67 [5.33-6.01]	47 [44.6-49.4]	5.5 [5.2-5.81]
2008	11.41 [10.71-12.11]	6.92 [6.53-7.31]	43.98 [42.16-45.8]	5.56 [5.22-5.9]	46.58 [44.12-49.04]	5.42 [5.1-5.73]
2009	10.88 [10.25-11.51]	6.59 [6.24-6.93]	42.59 [40.85-44.32]	5.27 [4.96-5.58]	45.18 [42.95-47.41]	5.13 [4.84-5.43]
2010	10.31 [9.65-10.98]	6.23 [5.89-6.57]	41.49 [39.77-43.21]	5.05 [4.72-5.39]	43.85 [41.65-46.05]	4.88 [4.59-5.17]
2011	10.36 [9.74-10.99]	6.26 [5.93-6.59]	42.24 [40.43-44.04]	5.2 [4.88-5.53]	44.37 [41.74-46.99]	4.98 [4.68-5.27]
2012	10.11 [9.52-10.69]	6.1 [5.78-6.41]	41.14 [39.54-42.75]	4.98 [4.59-5.28]	43.42 [41.24-45.6]	4.8 [4.52-5.07]
2013	10.08 [9.44-10.73]	6.08 [5.7-6.46]	41.09 [39.08-43.1]	4.97 [4.64-5.31]	43.29 [40.65-45.93]	4.77 [4.45-5.1]
2014	9.35 [8.75-9.96]	5.62 [5.32-5.93]	39.29 [37.71-40.87]	4.63 [4.35-4.91]	41.48 [39.14-43.83]	4.44 [4.19-4.71]
2016	6.61 [6.23-6.99]	3.93 [3.72-4.13]	30.46 [29.14-31.78]	3.18 [3-3.37]	32.38 [30.45-34.3]	3.05 [2.88-3.21]
2017	6.77 [6.36-7.17]	4.02 [3.81-4.24]	31.52 [30.15-32.9]	3.34 [3.16-3.52]	32.78 [30.8-34.77]	3.1 [2.93-3.28]
2018	6.29 [5.84-6.73]	3.73 [3.5-3.96]	29.63 [28.05-31.22]	3.06 [2.86-3.27]	30.95 [28.71-33.19]	2.86 [2.67-3.04]
2019	6.04 [5.57-6.51]	3.58 [3.32-3.84]	28.93 [27.25-30.6]	2.96 [2.73-3.19]	29.63 [27.4-31.86]	2.69 [2.48-2.9]

¹ MDE: AAPC = -5.3 (95% CI, -6.7 to -3.9), $p < 0.001$ ² No MDE: AAPC = -5.5 (95% CI, -6.9 to -4.1), $p < 0.001$ ³ AUD: AAPC = -3.4 (95% CI, -4.4 to -2.4), $p < 0.001$ ⁴ No AUD: AAPC = -5.2 (95% CI, -6.6 to -3.7), $p < 0.001$ ⁵ MDE and AUD: AAPC = -3.6 (95% CI, -4.5 to -2.8), $p < 0.001$ ⁶ No MDE or AUD: AAPC = -5.7 (95% CI, -7.2 to -4.3), $p < 0.001$

Supplemental Table 4. Trends in past-year adjusted prevalence of driving under the influence of alcohol (DUIA) and 95% CI by past-year major depressive episode (MDE) and alcohol use disorder (AUD), stratified by race and ethnicity, from 2005 to 2019.

A. Non-Hispanic Whites

Year	MDE ¹	No MDE ²	AUD ³	No AUD ⁴	MDE and AUD ⁵	No MDE or AUD ⁶
2005	21.22 [20.21-22.22]	13.46 [12.84-14.99]	60.13 [58.6-61.67]	10.17 [9.64-10.69]	62.51 [60.59-64.43]	9.87 [9.37-10.36]
2006	20.36 [19.4-21.31]	12.86 [12.33-13.4]	58.85 [57.35-60.35]	9.69 [9.22-10.16]	61.22 [59.14-63.3]	9.39 [8.96-9.92]
2007	20.54 [19.56-21.52]	12.99 [12.43-13.55]	59.23 [57.62-60.85]	9.83 [9.31-10.35]	61.35 [59.2-63.49]	9.44 [8.98-9.9]
2008	20.28 [19.25-21.31]	12.81 [12.18-13.44]	58.74 [57.02-60.45]	9.65 [9.13-10.17]	60.94 [58.73-63.16]	9.29 [8.81-9.78]
2009	19.44 [18.53-20.34]	12.23 [11.68-12.78]	56.36 [55.72-58.99]	9.17 [8.7-9.63]	59.6 [57.59-61.6]	8.83 [8.39-9.27]
2010	18.52 [17.55-19.48]	11.6 [11.07-12.13]	56.25 [54.63-57.88]	8.8 [8.29-9.31]	58.29 [56.29-60.29]	8.41 [7.96-8.85]
2011	18.6 [17.69-19.51]	11.66 [11.13-12.19]	57 [55.31-58.7]	9.05 [8.56-9.53]	58.8 [56.38-61.22]	8.57 [8.12-9.02]
2012	18.18 [17.34-19.01]	11.37 [10.88-11.87]	55.9 [54.42-57.38]	8.68 [8.25-9.11]	57.87 [55.9-69.84]	8.27 [7.87-8.68]
2013	18.14 [17.14-19.13]	11.34 [10.69-12]	55.85 [53.84-57.86]	8.67 [8.13-9.21]	57.73 [55.21-60.26]	8.23 [7.71-8.76]
2014	16.94 [16.02-17.84]	10.54 [10.04-11.03]	53.99 [52.43-55.55]	8.09 [7.65-8.53]	55.92 [53.7-58.15]	7.69 [7.29-8.09]
2016	12.27 [11.68-12.85]	7.47 [7.14-7.81]	44.26 [42.83-45.69]	5.62 [5.34-5.91]	46.14 [44.14-48.15]	5.33 [5.07-5.58]
2017	12.54 [11.94-13.14]	7.65 [7.31-7.99]	45.49 [44.06-46.93]	5.89 [5.62-6.16]	46.61 [44.57-48.64]	5.42 [5.17-5.68]
2018	11.7 [10.99-12.41]	7.11 [6.72-7.5]	43.3 [41.54-45.06]	5.42 [5.1-5.74]	44.51 [42.09-46.94]	5 [5.71-5.29]
2019	11.27 [10.52-12.01]	6.83 [6.4-7.26]	42.46 [40.63-44.29]	5.26 [4.89-5.6]	42.97 [40.56-45.39]	4.72 [4.39-5.04]

¹ MDE: AAPC = -4.9 (95% CI, -6.1 to -3.6), $p < 0.001$

² No MDE: AAPC = -5.2 (95% CI, -6.5 to -3.9), $p < 0.001$

³ AUD: AAPC = -2.7 (95% CI, -3.5 to -1.9), $p < 0.001$

⁴ No AUD: AAPC = -5.1 (95% CI, -6.6 to -3.6), $p < 0.001$

⁵ MDE and AUD: AAPC = -2.8 (95% CI, -3.5 to -2.2), $p < 0.001$

⁶ No MDE or AUD: AAPC = -5.5 (95% CI, -6.9 to -4.2), $p < 0.001$

B. Non-Hispanic Black

Year	MDE ¹	No MDE ²	AUD ³	No AUD ⁴	MDE and AUD ⁵	No MDE or AUD ⁶
2005	13.35 [12.53-14.16]	8.17 [7.71-8.63]	47.31 [45.46-49.16]	6.31 [5.89-6.73]	51.33 [48.97-53.69]	6.48 [6.08-6.87]
2006	12.75 [11.86-13.64]	7.78 [7.29-8.28]	45.98 [43.97-47.99]	6 [5.57-6.44]	49.96 [47.26-52.66]	6.15 [5.73-6.58]
2007	12.88 [12.01-13.75]	7.87 [7.39-8.35]	46.38 [44.26-48.5]	6.09 [5.63-6.55]	50.1 [47.36-52.83]	6.18 [5.75-6.62]
2008	12.7 [11.85-13.55]	7.75 [7.27-8.23]	45.87 [43.9-47.84]	5.98 [5.57-6.38]	49.67 [47.04-52.31]	6.09 [5.69-6.48]
2009	12.12 [11.35-12.89]	7.38 [6.95-7.81]	44.46 [42.52-46.4]	5.67 [5.28-6.05]	48.27 [45.81-50.72]	5.77 [5.4-6.14]
2010	11.5 [10.66-12.34]	6.98 [6.52-7.44]	43.36 [41.4-45.32]	5.43 [5.02-5.84]	46.92 [44.41-49.43]	5.49 [5.1-5.87]
2011	11.55 [10.76-12.35]	7.02 [6.58-7.46]	44.11 [42.01-46.21]	5.59 [5.17-6.01]	47.45 [44.54-40.36]	5.6 [5.19-6]
2012	11.27 [10.54-11.99]	6.83 [6.43-7.24]	43 [41.22-44.79]	5.36 [5-5.71]	46.49 [44.06-48.92]	5.4 [5.04-5.75]
2013	11.24 [10.49-12]	6.82 [6.37-7.27]	42.95 [40.84-45.07]	5.35 [4.97-5.73]	46.35 [43.56-49.15]	5.37 [4.99-5.75]
2014	10.44 [9.7-11.18]	6.31 [5.92-6.7]	41.13 [39.32-42.93]	4.98 [4.63-5.33]	44.52 [41.92-47.12]	5.01 [4.67-5.34]
2016	7.4 [6.92-7.89]	4.41 [4.15-4.68]	32.1 [30.52-33.68]	3.43 [3.19-3.66]	35.15 [32.92-37.38]	3.44 [3.21-3.66]
2017	7.58 [7.04-8.12]	4.52 [4.22-4.82]	33.19 [31.46-34.92]	3.59 [3.34-3.85]	35.57 [33.2-37.95]	3.5 [3.25-3.75]
2018	7.04 [6.51-7.58]	4.19 [3.91-4.48]	31.25 [29.46-33.04]	3.3 [3.05-3.54]	33.66 [31.17-36.16]	3.22 [2.99-3.46]
2019	6.77 [6.2-7.34]	4.03 [3.71-4.34]	30.52 [28.6-32.44]	3.19 [2.91-3.47]	32.28 [29.75-34.82]	3.04 [2.77-3.3]

¹ MDE: AAPC = -5.2 (95% CI, -6.5 to -3.9), $p < 0.001$

² No MDE: AAPC = -5.4 (95% CI, -6.8 to -4.0), $p < 0.001$

³ AUD: AAPC = -3.4 (95% CI, -4.3 to -2.4), $p < 0.001$

⁴ No AUD: AAPC = -5.2 (95% CI, -6.7 to -3.7), $p < 0.001$

⁵ MDE and AUD: AAPC = -3.5 (95% CI, -4.3 to -2.7), $p < 0.001$

⁶ No MDE or AUD: AAPC = -5.7 (95% CI, -7.0 to -4.3), $p < 0.001$

C. Hispanic

Year	MDE ¹	No MDE ²	AUD ³	No AUD ⁴	MDE and AUD ⁵	No MDE or AUD ⁶
2005	14.41 [13.6-15.22]	8.86 [8.4-9.32]	48.05 [46.33-49.79]	6.49 [6.13-6.86]	52.17 [49.86-54.49]	6.68 [6.32-7.05]
2006	13.77 [12.91-14.64]	8.45 [7.97-8.92]	46.73 [44.85-48.62]	6.18 [5.8-6.56]	50.81 [48.2-53.41]	6.35 [5.97-6.73]
2007	13.91 [12.99-14.83]	8.54 [8.02-9.05]	47.13 [44.98-49.27]	6.27 [5.82-6.72]	50.94 [48.2-53.68]	6.38 [5.95-6.81]
2008	13.72 [12.85-14.59]	8.41 [7.91-8.91]	46.61 [44.6-48.63]	6.15 [5.75-6.55]	50.52 [47.85-53.18]	6.28 [5.89-6.67]
2009	13.1 [12.29-13.91]	8.01 [7.55-8.47]	45.21 [43.23-47.18]	5.83 [5.46-6.2]	49.11 [46.61-51.61]	5.96 [5.58-6.33]
2010	12.44 [11.49-13.28]	7.58 [7.13-8.04]	44.1 [42.04-46.15]	5.59 [5.17-6]	47.76 [45.25-50.27]	5.66 [5.28-6.04]
2011	12.5 [11.59-13.4]	7.62 [7.1-8.14]	44.85 [42.63-47.07]	5.75 [5.32-6.18]	48.29 [45.29-51.29]	5.78 [5.35-6.2]
2012	12.19 [11.45-12.93]	7.42 [7-7.84]	43.74 [41.93-45.55]	5.55 [5.17-5.85]	47.33 [44.91-49.75]	5.57 [5.23-5.91]
2013	12.16 [11.31-13.01]	7.41 [6.89-7.92]	43.69 [41.48-45.9]	5.5 [5.11-5.89]	47.19 [44.31-50.07]	5.54 [5.14-5.94]
2014	11.3 [10.55-12.06]	6.86 [6.46-7.26]	41.85 [39.99-43.72]	5.12 [4.78-5.47]	45.36 [42.75-47.96]	5.17 [4.84-5.49]
2016	8.04 [7.54-8.54]	4.81 [4.53-5.08]	32.76 [31.22-34.3]	3.53 [3.31-3.74]	35.92 [33.73-38.11]	3.55 [3.35-3.75]
2017	8.23 [7.67-8.79]	4.92 [4.61-5.24]	33.86 [32.12-35.61]	3.7 [3.46-3.94]	36.36 [33.99-38.71]	3.61 [3.38-3.85]
2018	7.65 [7.06-8.24]	4.57 [0-4.89]	31.9 [39.98-33.82]	3.4 [3.14-3.65]	34.42 [31.82-37.02]	3.33 [3.09-3.58]
2019	7.35 [0.68-7.93]	4.38 [4.07-4.7]	31.16 [29.32-33]	3.28 [3.03-3.54]	33.02 [30.55-35.49]	3.14 [2.89-3.38]

¹ MDE: AAPC = -5.2 (95% CI, -6.5 to -3.8), $p < 0.001$

² No MDE: AAPC = -5.4 (95% CI, -6.7 to -4.0), $p < 0.001$

³ AUD: AAPC = -3.4 (95% CI, -4.3 to -2.4), $p < 0.001$

⁴ No AUD: AAPC = -5.2 (95% CI, -6.7 to -3.7), $p < 0.001$

⁵ MDE and AUD: AAPC = -3.4 (95% CI, -4.2 to -2.6), $p < 0.001$

⁶ No MDE or AUD: AAPC = -5.7 (95% CI, -7.1 to -4.2), $p < 0.001$

D. Other Race

Year	MDE ¹	No MDE ²	AUD ³	No AUD ⁴	MDE and AUD ⁵	No MDE or AUD ⁶
2005	9.84 [9.09-10.59]	5.93 [5.51-6.35]	38.7 [36.69-40.7]	4.52 [4.15-4.89]	41.94 [39.47-44.41]	4.53 [4.19-4.87]
2006	9.39 [8.62-10.16]	5.65 [5.22-6.07]	37.44 [35.4-39.48]	4.3 [3.94-4.66]	40.62 [37.92-43.32]	4.3 [3.96-4.64]
2007	9.49 [8.7-10.27]	5.71 [5.27-6.14]	37.81 [35.63-40]	4.36 [3.98-4.75]	40.75 [37.96-43.53]	4.32 [3.96-4.68]
2008	9.35 [8.58-10.12]	5.62 [5.19-6.06]	37.33 [35.14-39.52]	4.28 [3.9-4.65]	40.34 [37.57-43.11]	4.25 [3.9-4.6]
2009	8.91 [8.22-9.59]	5.35 [4.96-5.73]	36.01 [34.02-38.01]	4.05 [3.72-4.38]	38.99 [36.49-41.49]	4.03 [3.72-4.34]
2010	8.43 [7.76-9.1]	5.05 [4.7-5.41]	34.98 [33.1-36.87]	3.88 [3.56-4.2]	37.72 [35.32-40.11]	3.82 [3.53-4.12]
2011	8.48 [7.78-9.17]	5.08 [4.69-5.46]	35.68 [33.55-37.82]	4 [3.65-4.35]	38.21 [35.32-41.1]	3.9 [3.57-4.34]
2012	8.26 [7.6-8.92]	4.94 [4.58-5.31]	34.66 [32.7-36.62]	3.83 [3.5-4.15]	37.31 [34.84-39.78]	3.76 [3.46-4.06]
2013	8.24 [7.56-8.92]	4.93 [4.54-5.33]	34.61 [32.47-36.75]	3.82 [3.49-4.15]	37.18 [34.37-39.99]	3.74 [3.42-4.06]
2014	7.63 [6.97-8.29]	4.56 [4.2-4.91]	32.93 [31.01-34.85]	3.55 [3.25-3.86]	35.47 [32.88-38.07]	3.48 [3.2-3.77]
2016	5.36 [4.92-5.81]	3.17 [2.93-3.41]	24.94 [23.34-26.55]	2.43 [2.22-2.64]	27.07 [24.95-29.2]	2.38 [2.19-2.57]
2017	5.49 [5.05-5.94]	3.25 [3-3.49]	25.89 [24.29-27.48]	2.55 [2.35-2.76]	27.44 [25.29-29.6]	2.42 [2.23-2.62]
2018	5.1 [4.64-5.56]	3.01 [2.77-3.25]	24.22 [22.46-25.98]	2.34 [2.13-2.56]	25.79 [23.5-28.09]	2.23 [2.04-2.42]
2019	4.9 [4.43-5.36]	2.89 [2.63-3.14]	23.59 [21.83-25.36]	2.26 [2.04-2.49]	24.62 [22.38-26.85]	2.1 [1.9-2.3]

¹ MDE: AAPC = -5.3 (95% CI, -6.6 to -4.0), $p < 0.001$

² No MDE: AAPC = -5.5 (95% CI, -6.8 to -4.1), $p < 0.001$

³ AUD: AAPC = -3.8 (95% CI, -4.8 to -2.7), $p < 0.001$

⁴ No AUD: AAPC = -5.3 (95% CI, -6.7 to -3.8), $p < 0.001$

⁵ MDE and AUD: AAPC = -4.0 (95% CI, -4.9 to -3.0), $p < 0.001$

⁶ No MDE or AUD: AAPC = -5.7 (95% CI, -7.0 to -4.3), $p < 0.001$

Supplemental Table 5. Trends in past-year adjusted prevalence of driving under the influence of alcohol (DUIA) and 95% CI by past-year major depressive episode (MDE) and alcohol use disorder (AUD), stratified by marital status, from 2005 to 2019.

A. Never married

Year	MDE ¹	No MDE ²	AUD ³	No AUD ⁴	MDE and AUD ⁵	No MDE or AUD ⁶
2005	22.81 [21.71-23.91]	14.58 [13.89-15.27]	60.24 [58.62-61.86]	10.21 [9.62-10.8]	63.32 [61.35-65.29]	10.18 [9.62-10.74]
2006	21.9 [20.8-23]	13.94 [13.3-14.58]	58.96 [57.37-60.54]	9.73 [9.2-10.26]	62.04 [59.9-64.19]	9.69 [9.19-10.19]
2007	22.1 [20.96-23.24]	14.08 [13.4-14.75]	59.34 [57.61-61.07]	9.87 [9.28-10.46]	62.17 [59.95-64.4]	9.74 [9.2-10.28]
2008	21.82 [20.7-22.94]	13.88 [13.19-14.58]	58.85 [57.1-60.6]	9.69 [9.13-10.25]	61.77 [59.53-64.1]	9.59 [9.06-10.13]
2009	20.93 [19.91-21.94]	13.26 [12.64-13.88]	57.47 [55.76-59.18]	9.2 [8.69-9.72]	60.43 [58.38-62.49]	9.12 [8.62-9.61]
2010	19.95 [18.87-21.04]	12.59 [11.97-13.2]	56.36 [54.71-58.02]	8.84 [8.3-9.37]	59.14 [57.1-61.17]	8.68 [8.19-9.16]
2011	20.04 [19.03-21.05]	12.65 [12.05-13.24]	57.11 [55.35-58.88]	9.08 [8.55-9.62]	59.65 [57.19-62.1]	8.85 [8.35-9.35]
2012	19.59 [18.61-20.58]	12.34 [11.74-12.94]	56.01 [54.41-57.61]	8.72 [8.23-9.21]	58.72 [56.63-60.8]	8.54 [8.06-9.02]
2013	19.55 [18.52-20.58]	12.31 [11.64-12.98]	55.96 [53.97-57.95]	8.7 [8.15-9.25]	58.58 [56.08-61.09]	8.5 [7.95-9.04]
2014	18.28 [17.25-19.31]	11.44 [10.86-12.02]	54.1 [52.47-55.73]	8.13 [7.65-8.61]	56.78 [54.5-59.06]	7.94 [7.49-8.39]
2016	13.3 [12.62-13.98]	8.14 [7.75-8.53]	44.37 [42.88-45.87]	5.65 [5.33-5.96]	47.01 [44.93-49.1]	5.51 [5.21-5.8]
2017	13.59 [12.88-14.31]	8.33 [7.91-8.75]	45.6 [44.05-47.16]	5.92 [5.6-6.24]	47.48 [45.33-49.62]	5.6 [5.3-5.91]
2018	12.7 [11.9-13.49]	7.75 [7.31-8.19]	43.41 [41.6-45.21]	5.44 [5.1-5.78]	45.38 [42.89-47.86]	5.17 [4.85-5.49]
2019	12.23 [11.38-13.08]	7.45 [6.95-7.94]	42.57 [40.64-44.49]	5.27 [4.88-5.66]	43.83 [41.32-46.35]	4.87 [4.51-5.24]

¹ MDE: AAPC = -4.8 (95% CI, -6.1 to -3.6), $p < 0.001$

² No MDE: AAPC = -5.2 (95% CI, -6.5 to -3.8), $p < 0.001$

³ AUD: AAPC = -2.7 (95% CI, -3.5 to -1.9), $p < 0.001$

⁴ No AUD: AAPC = -5.1 (95% CI, -6.6 to -3.6), $p < 0.001$

⁵ MDE and AUD: AAPC = -2.8 (95% CI, -3.4 to -2.1), $p < 0.001$

⁶ No MDE or AUD: AAPC = -5.5 (95% CI, -6.8 to -4.1), $p < 0.001$

B. Married

Year	MDE ¹	No MDE ²	AUD ³	No AUD ⁴	MDE and AUD ⁵	No MDE or AUD ⁶
2005	15.01 [14.25-15.77]	9.26 [8.82-9.69]	51.31 [49.77-52.86]	7.33 [6.95-7.7]	54.43 [52.33-56.54]	7.27 [6.91-7.63]
2006	14.36 [13.57-15.15]	8.83 [8.4-9.25]	49.98 [48.32-51.64]	6.97 [6.6-7.35]	53.07 [5.07-55.45]	6.91 [6.55-7.27]
2007	14.5 [13.71-15.28]	8.92 [8.5-9.34]	50.38 [48.62-52.13]	7.08 [6.67-7.49]	53.21 [50.79-55.62]	6.95 [6.57-7.32]
2008	14.3 [13.48-15.12]	8.79 [8.32-9.26]	49.86 [48.09-51.64]	6.94 [6.56-7.33]	52.79 [50.35-55.22]	6.84 [6.46-7.22]
2009	13.66 [12.93-14.39]	8.37 [7.95-8.79]	48.45 [46.71-50.18]	6.59 [6.22-6.95]	51.38 [49.13-53.63]	6.49 [6.14-6.84]
2010	12.97 [12.21-13.73]	7.92 [7.52-8.24]	47.32 [45.6-49.05]	6.32 [5.92-6.71]	50.03 [47.81-52.26]	6.17 [5.82-6.52]
2011	13.03 [12.27-13.8]	7.97 [7.54-8.39]	48.09 [46.24-49.93]	6.5 [6.11-6.89]	50.56 [47.87-53.25]	6.29 [5.92-6.67]
2012	12.72 [12.09-13.34]	7.76 [7.41-8.11]	46.97 [45.49-48.45]	6.23 [5.92-6.54]	49.6 [47.48-51.72]	6.07 [5.77-6.37]
2013	12.69 [11.89-13.49]	7.74 [7.25-8.24]	46.92 [44.86-48.97]	6.22 [5.82-6.62]	49.46 [46.75-52.17]	6.04 [5.63-6.44]
2014	11.8 [11.08-12.51]	7.17 [6.79-7.55]	45.05 [43.43-46.67]	5.8 [5.46-6.13]	47.62 [45.2-50.03]	5.63 [5.31-5.95]
2016	8.4 [7.96-8.84]	5.03 [4.79-5.27]	35.69 [34.33-37.05]	4 [3.79-4.21]	38.04 [36.01-40.07]	3.87 [3.68-4.07]
2017	8.6 [8.13-9.06]	5.15 [4.89-5.41]	36.84 [35.41-38.26]	4.19 [3.98-4.4]	38.48 [36.37-40.58]	3.94 [3.74-4.15]
2018	8 [7.46-8.53]	4.78 [4.5-5.07]	34.79 [33.1-36.49]	3.85 [3.61-4.09]	36.5 [34.09-38.91]	3.64 [3.41-3.86]
2019	7.69 [7.14-8.24]	4.59 [4.28-4.9]	34.02 [32.3-35.74]	3.72 [3.46-3.99]	35.06 [32.71-37.42]	3.42 [3.18-3.67]

¹ MDE: AAPC = -5.2 (95% CI, -6.5 to -3.8), $p < 0.001$

² No MDE: AAPC = -5.4 (95% CI, -6.8 to -4.0), $p < 0.001$

³ AUD: AAPC = -3.2 (95% CI, -4.1 to -2.3), $p < 0.001$

⁴ No AUD: AAPC = -5.2 (95% CI, -6.7 to -3.7), $p < 0.001$

⁵ MDE and AUD: AAPC = -3.3 (95% CI, -4.1 to -2.5), $p < 0.001$

⁶ No MDE or AUD: AAPC = -5.6 (95% CI, -7.0 to -4.2), $p < 0.001$

C. Widowed

Year	MDE ¹	No MDE ²	AUD ³	No AUD ⁴	MDE and AUD ⁵	No MDE or AUD ⁶
2005	21.38 [20.18-22.58]	13.57 [12.82-14.33]	59.66 [57.9-61.43]	9.99 [9.39-10.59]	61.73 [59.62-63.84]	9.58 [9.01-10.14]
2006	20.51 [19.39-21.64]	12.97 [12.32-13.62]	58.37 [56.69-60.06]	9.52 [9-10.04]	60.43 [58.18-62.68]	9.11 [8.62-9.61]
2007	20.7 [19.48-21.91]	13.1 [12.38-13.82]	58.76 [56.82-60.7]	9.66 [9.03-10.29]	60.56 [58.17-62.94]	9.16 [8.59-9.72]
2008	20.44 [19.25-21.62]	12.92 [12.19-13.64]	58.26 [56.28-60.24]	9.48 [8.87-10.09]	60.15 [57.75-62.55]	9.02 [8.46-9.58]
2009	19.59 [18.55-20.62]	12.33 [11.71-12.95]	56.88 [55.12-58.64]	9.01 [8.51-9.5]	58.8 [56.66-60.93]	8.57 [8.09-9.04]
2010	18.66 [17.55-19.77]	11.7 [11.07-12.33]	55.77 [53.9-57.64]	8.64 [8.07-9.22]	57.48 [55.26-59.71]	8.15 [7.64-8.67]
2011	18.74 [17.64-19.85]	11.76 [11.1-12.41]	56.52 [54.56-58.49]	8.89 [8.32-9.46]	58 [55.36-60.63]	8.31 [7.78-8.85]
2012	18.32 [17.24-19.39]	11.47 [10.81-12.12]	55.42 [53.58-57.25]	8.53 [8-9.07]	57.06 [54.81-59.31]	8.02 [7.52-8.53]
2013	18.28 [17.18-19.38]	11.44 [10.74-12.14]	55.36 [53.23-57.5]	8.51 [7.95-9.08]	56.92 [54.29-59.56]	7.98 [7.44-8.53]
2014	17.07 [16.06-18.09]	10.63 [10.07-11.18]	53.5 [51.76-55.25]	7.95 [7.47-8.43]	55.1 [52.75-57.46]	7.46 [7.02-7.89]
2016	12.37 [11.64-13.1]	7.54 [7.12-7.95]	43.78 [42.04-45.52]	5.55 [5.18-5.87]	45.32 [43.09-47.56]	5.16 [4.85-5.47]
2017	12.65 [11.88-13.41]	7.72 [7.27-8.16]	45.01 [43.24-46.78]	5.79 [5.44-6.13]	45.78 [43.5-48.07]	5.25 [4.93-5.57]
2018	11.8 [10.99-12.61]	7.17 [6.72-7.62]	42.82 [40.8-44.84]	5.32 [4.95-5.69]	43.7 [41.09-46.3]	4.85 [4.52-5.18]
2019	11.36 [10.53-12.2]	6.89 [6.41-7.38]	41.98 [39.95-44.02]	5.15 [4.76-5.54]	42.17 [39.58-44.75]	4.57 [4.21-4.93]

¹ MDE: AAPC = -4.8 (95% CI, -6.1 to -3.6), $p < 0.001$

² No MDE: AAPC = -5.2 (95% CI, -6.5 to -3.9), $p < 0.001$

³ AUD: AAPC = -2.7 (95% CI, -3.4 to -2.0), $p < 0.001$

⁴ No AUD: AAPC = -5.1 (95% CI, -6.5 to -3.6), $p < 0.001$

⁵ MDE and AUD: AAPC = -2.8 (95% CI, -3.5 to -2.2), $p < 0.001$

⁶ No MDE or AUD: AAPC = -5.5 (95% CI, -6.7 to -4.2), $p < 0.001$

Supplemental Table 6. Trends in past-year adjusted prevalence of driving under the influence of alcohol (DUIA) and 95% CI by past-year major depressive episode (MDE) and alcohol use disorder (AUD), stratified by education level, from 2005 to 2019.

A. Less than high school

Year	MDE ¹	No MDE ²	AUD ³	No AUD ⁴	MDE and AUD ⁵	No MDE or AUD ⁶
2005	10.73 [10.02-11.44]	6.49 [6.08-6.9]	38.04 [36.23-39.86]	4.4 [4.09-4.72]	42.34 [40.1-44.58]	4.6 [4.29-4.91]
2006	10.24 [9.54-10.94]	6.18 [5.8-6.56]	36.8 [35.07-38.52]	4.19 [3.9-4.47]	41.01 [38.62-43.4]	4.37 [4.08-4.66]
2007	10.35 [9.62-11.97]	6.25 [5.85-6.65]	37.17 [35.19-39.15]	4.25 [3.92-4.58]	41.14 [38.61-43.68]	4.39 [4.07-4.71]
2008	10.2 [9.55-10.85]	6.15 [5.79-6.52]	36.69 [34.98-38.4]	4.17 [3.9-4.44]	40.73 [38.42-43.05]	4.32 [4.05-4.58]
2009	9.72 [9.04-10.4]	5.86 [5.46-6.25]	35.38 [33.48-37.28]	3.95 [3.65-4.24]	39.38 [37.03-41.73]	4.09 [3.79-4.39]
2010	9.21 [8.55-9.86]	5.53 [5.18-5.89]	34.36 [32.56-36.16]	3.78 [3.49-4.07]	38.1 [35.88-40.33]	3.88 [3.6-4.16]
2011	9.25 [8.59-9.92]	5.56 [5.18-5.94]	35.05 [33.13-36.97]	3.89 [3.59-4.19]	38.6 [35.94-41.26]	3.96 [3.67-4.26]
2012	9.02 [8.4-9.64]	5.42 [5.06-5.77]	34.04 [32.37-35.71]	3.73 [3.46-3.99]	37.69 [35.48-39.91]	3.82 [3.55-4.09]
2013	9 [8.35-9.65]	5.4 [5.02-5.79]	33.99 [32.06-35.92]	3.72 [3.44-3.99]	37.56 [35.03-40.1]	3.8 [3.52-4.08]
2014	8.34 [7.73-8.95]	4.99 [4.67-5.32]	32.33 [30.7-33.95]	3.46 [3.21-3.71]	35.85 [33.53-38.17]	3.54 [3.29-3.79]
2016	5.87 [5.47-6.28]	3.48 [3.26-3.7]	24.43 [23.03-25.83]	2.37 [2.19-2.54]	27.4 [25.53-29.27]	2.42 [2.25-2.59]
2017	6.02 [5.6-6.43]	3.57 [3.33-3.8]	25.36 [23.96-26.76]	2.49 [2.31-2.66]	27.77 [25.87-29.67]	2.46 [2.29-2.63]
2018	5.59 [5.14-6.03]	3.3 [3.06-3.55]	23.71 [22.17-25.25]	2.28 [2.1-2.46]	26.11 [23.98-28.24]	2.27 [2.09-2.45]
2019	5.36 [4.89-5.84]	3.17 [2.91-3.43]	23.1 [21.45-24.75]	2.2 [2-2.41]	24.92 [22.8-27.05]	2.13 [1.94-2.33]

¹ MDE: AAPC = -5.3 (95% CI, -6.7 to -3.9), $p < 0.001$

² No MDE: AAPC = -5.5 (95% CI, -6.9 to -4.1), $p < 0.001$

³ AUD: AAPC = -3.8 (95% CI, -4.9 to -2.8), $p < 0.001$

⁴ No AUD: AAPC = -4.5 (95% CI, -6.4 to -2.6), $p < 0.001$

⁵ MDE and AUD: AAPC = -4.0 (95% CI, -4.9 to -3.0), $p < 0.001$

⁶ No MDE or AUD: AAPC = -5.8 (95% CI, -7.2 to -4.3), $p < 0.001$

B. High school diploma

Year	MDE ¹	No MDE ²	AUD ³	No AUD ⁴	MDE and AUD ⁵	No MDE or AUD ⁶
2005	15.72 [14.91-16.53]	9.73 [9.27-10.18]	51.12 [49.52-52.72]	7.28 [6.88-7.67]	54.27 [52.2-56.33]	7.23 [6.86-7.59]
2006	15.04 [14.19-15.88]	9.27 [8.82-9.73]	49.79 [48.14-51.44]	6.92 [6.55-7.3]	52.91 [50.6-55.22]	6.87 [6.51-7.23]
2007	15.18 [14.33-16.04]	9.37 [8.91-9.83]	50.19 [48.42-51.96]	7.03 [6.61-7.44]	53.04 [50.66-55.42]	6.9 [6.52-7.29]
2008	14.98 [14.11-15.84]	9.24 [8.74-9.73]	49.67 [47.83-51.51]	6.9 [6.48-7.31]	52.62 [50.2-55.04]	6.8 [6.41-7.19]
2009	14.31 [13.55-15.07]	8.8 [8.37-9.23]	48.26 [46.54-49.97]	6.54 [6.18-6.9]	51.21 [49.02-53.41]	6.45 [6.09-6.8]
2010	13.6 [12.78-14.41]	8.33 [7.9-8.76]	47.13 [45.43-48.84]	6.27 [5.88-6.66]	49.86 [47.71-52.02]	6.13 [5.78-6.48]
2011	13.66 [12.87-14.46]	8.37 [7.93-8.81]	47.9 [46.08-49.72]	6.45 [6.06-6.84]	50.39 [47.76-53.02]	6.25 [5.88-6.63]
2012	13.33 [12.66-14.01]	8.16 [7.79-8.53]	46.78 [45.23-48.32]	6.19 [5.86-6.52]	49.43 [47.35-51.52]	6.03 [5.72-6.34]
2013	13.3 [12.48-14.12]	8.14 [7.64-8.64]	46.72 [44.66-48.79]	6.17 [5.8-6.58]	49.29 [46.62-51.96]	6 [5.59-6.41]
2014	12.37 [11.6-13.15]	7.54 [7.13-7.95]	44.86 [43.17-46.56]	5.75 [5.4-6.11]	47.45 [45.05-49.85]	5.6 [5.27-5.93]
2016	8.83 [8.35-9.31]	5.3 [5.04-5.56]	35.51 [34.13-36.89]	3.97 [3.75-4.18]	37.88 [35.88-39.88]	3.85 [3.65-4.05]
2017	9.03 [8.54-9.53]	5.42 [5.15-5.7]	36.66 [35.23-38.08]	4.16 [3.95-4.38]	38.32 [36.27-40.37]	3.92 [3.71-4.12]
2018	8.41 [7.83-8.98]	5.03 [4.73-5.34]	34.62 [32.87-36.37]	3.82 [3.57-4.07]	36.34 [33.95-38.74]	3.63 [3.38-3.85]
2019	8.08 [7.49-8.67]	4.83 [4.51-5.16]	33.85 [32.08-35.61]	3.7 [3.42-3.97]	34.91 [32.56-37.26]	3.4 [3.15-3.66]

¹ MDE: AAPC = -5.1 (95% CI, -6.5 to -3.8), $p < 0.001$

² No MDE: AAPC = -5.4 (95% CI, -6.7 to -4.0), $p < 0.001$

³ AUD: AAPC = -3.2 (95% CI, -4.1 to -2.3), $p < 0.001$

⁴ No AUD: AAPC = -5.2 (95% CI, -6.8 to -3.7), $p < 0.001$

⁵ MDE and AUD: AAPC = -3.3 (95% CI, -4.1 to -2.5), $p < 0.001$

⁶ No MDE or AUD: AAPC = -5.7 (95% CI, -7.1 to -4.2), $p < 0.001$

C. Some college

Year	MDE ¹	No MDE ²	AUD ³	No AUD ⁴	MDE and AUD ⁵	No MDE or AUD ⁶
2005	20.18 [19.2-21.17]	12.74 [12.13-13.36]	58.93 [57.33-60.53]	9.72 [9.19-10.25]	61.18 [59.16-63.2]	9.38 [8.88-9.88]
2006	19.35 [18.39-20.31]	12.17 [11.63-12.72]	57.64 [56.03-59.24]	9.26 [8.78-9.75]	59.88 [57.67-62.08]	8.92 [8.47-9.38]
2007	19.53 [18.55-20.51]	12.3 [11.73-12.86]	58.03 [56.29-59.76]	9.4 [8.86-9.93]	60.01 [57.75-62.26]	8.97 [8.49-9.44]
2008	19.28 [18.27-20.29]	12.12 [11.5-12.74]	57.52 [55.78-59.27]	9.22 [8.72-9.73]	59.6 [57.3-61.89]	8.33 [8.35-9.31]
2009	18.47 [17.6-19.34]	11.57 [11.04-12.09]	56.13 [54.53-57.73]	8.76 [8.33-9.19]	58.24 [56.23-60.24]	8.39 [7.99-8.79]
2010	17.58 [16.64-18.52]	10.97 [10.45-11.49]	55.02 [53.38-56.67]	8.41 [7.92-8.9]	56.92 [54.85-58.98]	7.98 [7.55-8.41]
2011	17.66 [16.73-18.59]	11.02 [10.48-11.57]	55.78 [53.94-57.62]	8.65 [8.13-9.16]	57.43 [54.9-59.96]	8.14 [7.68-8.6]
2012	17.26 [16.44-18.07]	10.75 [10.26-11.24]	54.67 [53.08-56.25]	8.3 [7.85-8.74]	56.49 [54.42-58.57]	7.86 [7.44-8.27]
2013	17.22 [16.26-18.18]	10.73 [10.1-11.35]	54.61 [52.6-56.63]	8.28 [7.77-8.8]	56.36 [53.79-58.93]	7.82 [7.31-8.32]
2014	16.07 [15.18-16.95]	9.96 [9.47-10.44]	52.75 [51.15-54.35]	7.73 [7.3-8.16]	54.53 [52.23-56.83]	7.3 [6.91-7.69]
2016	11.6 [11.02-12.19]	7.05 [6.71-7.39]	43.04 [41.54-44.53]	5.36 [5.08-5.65]	44.75 [42.66-46.84]	5.05 [4.79-5.31]
2017	11.87 [11.27-12.46]	7.22 [6.87-7.56]	44.26 [42.74-45.78]	5.63 [5.34-5.9]	45.21 [43.09-47.33]	5.14 [4.88-5.4]
2018	11.07 [10.38-11.76]	6.71 [6.32-7.09]	42.08 [40.26-43.9]	5.17 [4.85-5.49]	43.13 [40.66-45.6]	4.74 [4.46-5.03]
2019	10.65 [9.93-11.37]	6.44 [6.03-6.86]	41.25 [39.41-43.09]	5 [4.66-5.35]	41.6 [39.17-44.04]	4.47 [4.15-4.79]

¹ MDE: AAPC = -4.9 (95% CI, -6.2 to -3.6), $p < 0.005$

² No MDE: AAPC = -5.2 (95% CI, -6.6 to -3.9), $p < 0.001$

³ AUD: AAPC = -2.8 (95% CI, -3.5 to -2.0), $p < 0.001$

⁴ No AUD: AAPC = -5.1 (95% CI, -6.6 to -3.6), $p < 0.001$

⁵ MDE and AUD: AAPC = -2.9 (95% CI, -3.5 to -2.2), $p < 0.001$

⁶ No MDE or AUD: AAPC = -5.5 (95% CI, -6.9 to -4.1), $p < 0.001$

D. College graduate

Year	MDE ¹	No MDE ²	AUD ³	No AUD ⁴	MDE and AUD ⁵	No MDE or AUD ⁶
2005	23.42 [22.31-24.52]	15.01 [14.33-15.69]	64.15 [62.68-65.62]	11.84 [11.25-12.42]	66.58 [64.66-68.5]	11.57 [11.02-12.12]
2006	22.49 [21.39-23.59]	14.35 [13.73-14.98]	62.92 [61.36-64.47]	11.29 [10.72-11.87]	65.35 [63.21-67.5]	11.02 [10.49-11.55]
2007	22.69 [21.55-23.83]	14.49 [13.84-15.15]	63.29 [61.63-64.94]	11.45 [10.82-12.08]	65.48 [63.27-67.68]	11.07 [10.51-11.64]
2008	22.41 [21.2-23.62]	14.3 [13.54-15.05]	62.81 [61.01-64.61]	11.25 [10.59-11.91]	65.09 [62.79-67.39]	10.91 [10.29-11.52]
2009	21.5 [20.47-22.52]	13.66 [13.04-14.27]	61.47 [59.8-63.15]	10.69 [10.12-11.26]	63.8 [61.72-65.89]	10.37 [9.84-10.9]
2010	20.51 [19.4-21.61]	12.97 [12.35-13.58]	60.4 [58.68-62.13]	10.27 [9.64-10.9]	62.55 [60.43-64.67]	9.88 [9.33-10.43]
2011	20.6 [19.54-21.66]	13.03 [12.41-13.65]	61.13 [59.39-62.88]	10.56 [9.96-11.15]	63.04 [60.55-65.54]	10.07 [9.51-10.63]
2012	20.14 [19.15-21.13]	12.71 [12.12-13.3]	60.06 [58.54-61.57]	10.14 [9.63-10.65]	62.14 [60.06-64.22]	9.73 [9.23-10.22]
2013	20.1 [18.97-21.23]	12.68 [11.95-13.42]	60.01 [57.99-62.03]	10.12 [9.48-10.76]	62.01 [59.44-64.58]	9.68 [9.06-10.31]
2014	18.8 [17.78-19.81]	11.79 [11.24-12.34]	58.2 [56.62-59.77]	9.46 [8.95-9.97]	60.26 [57.98-62.54]	9.05 [8.59-9.51]
2016	13.7 [13.03-14.37]	8.4 [8.02-8.77]	48.51 [47.02-50]	6.6 [6.27-6.94]	50.59 [48.44-52.74]	6.3 [6-6.6]
2017	14 [13.25-14.75]	8.59 [8.16-9.03]	49.75 [48.12-51.38]	6.92 [6.56-7.28]	51.05 [48.77-53.34]	6.41 [6.07-6.75]
2018	13.08 [12.28-13.88]	8 [7.56-8.43]	47.53 [45.7-49.36]	6.36 [5.99-6.74]	48.95 [46.37-51.52]	5.92 [5.58-6.26]
2019	12.6 [11.77-13.43]	7.69 [7.21-8.16]	46.68 [44.8-48.56]	6.16 [5.75-6.58]	47.38 [44.83-49.94]	5.58 [5.2-5.96]

¹ MDE: AAPC = -4.8 (95% CI, -6.0 to -3.5), $p < 0.001$

² No MDE: AAPC = -5.1 (95% CI, -6.5 to -3.8), $p < 0.001$

³ AUD: AAPC = -2.5 (95% CI, -3.2 to -1.8), $p < 0.001$

⁴ No AUD: AAPC = -5.0 (95% CI, -6.5 to -3.5), $p < 0.001$

⁵ MDE and AUD: AAPC = -2.5 (95% CI, -3.1 to -2.0), $p < 0.001$

⁶ No MDE or AUD: AAPC = -5.5 (95% CI, -6.8 to -4.1), $p < 0.001$

Supplemental Table 7. Trends in past-year adjusted prevalence of driving under the influence of alcohol (DUIA) and 95% CI by past-year major depressive episode (MDE) and alcohol use disorder (AUD), stratified by income, from 2005 to 2019.

A. Less than \$20,000

Year	MDE ¹	No MDE ²	AUD ³	No AUD ⁴	MDE and AUD ⁵	No MDE or AUD ⁶
2005	13.22 [12.5-13.93]	8.08 [7.67-8.5]	43.93 [42.28-45.58]	5.55 [5.24-5.87]	46.41 [44.28-48.54]	5.38 [5.08-5.68]
2006	12.63 [11.88-13.37]	7.7 [7.29-8.12]	42.62 [40.8-44.45]	5.28 [4.94-5.61]	45.05 [42.65-48.45]	5.11 [4.81-5.41]
2007	12.75 [12.02-13.48]	7.78 [7.38-8.19]	43.01 [41.25-44.78]	5.36 [5.04-5.68]	45.19 [42.8-47.57]	5.13 [4.84-5.43]
2008	12.57 [11.81-13.34]	7.67 [7.22-8.12]	42.51 [40.59-44.43]	5.26 [4.92-5.6]	44.77 [42.31-47.23]	5.05 [4.74-5.37]
2009	12 [11.35-12.65]	7.3 [6.93-7.68]	41.13 [39.39-42.87]	4.98 [4.69-5.27]	43.38 [41.22-45.54]	4.79 [4.52-5.06]
2010	11.38 [10.71-12.06]	6.91 [6.55-7.26]	40.05 [38.33-41.76]	4.77 [4.46-5.08]	42.06 [39.93-44.19]	4.55 [4.28-4.82]
2011	11.44 [10.76-12.12]	6.94 [6.56-7.33]	40.78 [38.91-42.66]	4.91 [4.59-5.23]	42.57 [39.97-45.18]	4.64 [4.35-4.93]
2012	11.16 [10.57-11.74]	6.76 [6.43-7.1]	39.7 [38.15-41.25]	4.71 [4.44-4.97]	41.64 [39.55-43.72]	4.47 [4.23-4.72]
2013	11.13 [10.39-11.87]	6.75 [6.29-7.2]	39.65 [37.54-41.77]	4.7 [4.36-5.04]	41.5 [38.84-44.16]	4.45 [4.13-4.77]
2014	10.34 [9.67-11.01]	6.24 [5.88-6.6]	37.87 [36.14-39.6]	4.37 [4.08-4.67]	39.72 [37.36-42.08]	4.15 [3.89-4.41]
2016	7.33 [6.92-8.77]	4.37 [4.14-4.59]	29.21 [27.88-30.53]	3 [2.83-3.18]	30.8 [28.95-32.65]	2.84 [2.68-3]
2017	7.5 [7.06-7.94]	4.47 [4.22-4.73]	30.24 [28.82-31.67]	3.15 [2.97-3.33]	31.19 [29.93-33.14]	2.89 [2.72-3.06]
2018	6.97 [6.5-7.44]	4.15 [3.9-4.4]	28.4 [26.84-29.96]	2.89 [2.7-3.08]	29.41 [27.29-31.54]	2.66 [2.49-2.83]
2019	6.7 [6.21-7.19]	3.98 [3.71-4.26]	27.71 [26.09-29.33]	2.8 [2.58-3.01]	28.13 [26.03-30.24]	2.51 [2.31-2.7]

¹ MDE: AAPC = -5.2 (95% CI, -6.5 to -3.9), $p < 0.001$

² No MDE: AAPC = -5.5 (95% CI, -6.9 to -4.0), $p < 0.001$

³ AUD: AAPC = -3.6 (95% CI, -4.6 to -2.5), $p < 0.001$

⁴ No AUD: AAPC = -5.3 (95% CI, -6.8 to -3.7), $p < 0.001$

⁵ MDE and AUD: AAPC = -3.7 (95% CI, -4.6 to -2.9), $p < 0.001$

⁶ No MDE or AUD: AAPC = -5.7 (95% CI, -7.1 to -4.3), $p < 0.001$

B. \$20,000-\$49,999

Year	MDE ¹	No MDE ²	AUD ³	No AUD ⁴	MDE and AUD ⁵	No MDE or AUD ⁶
2005	16.14 [15.31-16.97]	10 [9.52-10.48]	51.96 [50.36-53.57]	7.51 [7.09-7.92]	54.67 [52.57-56.77]	7.34 [6.96-7.72]
2006	15.44 [14.61-16.27]	9.54 [9.1-9.98]	50.63 [49.03-52.23]	7.15 [6.76-7.53]	53.31 [51-55.62]	6.97 [6.62-7.33]
2007	15.59 [14.78-16.4]	9.64 [9.21-10.07]	51.03 [49.36-52.69]	7.25 [6.85-7.65]	53.45 [51.13-55.76]	7 [6.66-7.36]
2008	15.38 [14.5-16.26]	9.5 [8.99-10.1]	50.52 [48.73-52.3]	7.11 [6.7-7.53]	53.02 [50.61-55.43]	6.9 [6.51-7.29]
2009	14.7 [13.91-15.5]	9.05 [8.6-9.51]	49.1 [47.37-50.83]	6.75 [6.37-7.13]	51.62 [49.4-53.84]	6.55 [6.19-6.91]
2010	13.97 [13.15-14.78]	8.57 [8.14-9]	47.97 [46.25-49.7]	6.47 [6.06-6.88]	50.27 [48.07-52.47]	6.22 [5.86-6.59]
2011	14.03 [13.22-14.84]	8.62 [8.16-9.07]	48.74 [46.89-50.59]	6.66 [6.25-7.07]	50.8 [48.13-53.47]	6.35 [5.96-6.74]
2012	13.7 [13.02-14.37]	8.4 [8.02-8.77]	47.62 [46.15-49.09]	6.39 [6.06-6.71]	49.84 [47.75-51.93]	6.12 [5.82-6.43]
2013	13.67 [12.8-14.53]	8.38 [7.84-8.91]	47.56 [45.48-49.65]	6.37 [5.94-6.8]	49.7 [46.99-52.41]	6.09 [5.67-6.51]
2014	12.72 [11.95-13.48]	7.76 [7.36-8.16]	45.7 [44.09-47.3]	5.94 [5.59-6.29]	47.86 [45.48-50.23]	5.68 [5.36-6]
2016	9.08 [8.6-9.57]	5.45 [5.19-5.72]	36.29 [34.91-37.66]	4.1 [3.87-4.32]	38.26 [36.24-40.29]	3.91 [3.71-4.11]
2017	9.29 [8.78-9.08]	5.59 [5.3-5.87]	37.44 [36.02-38.86]	4.3 [4.08-4.52]	38.7 [36.62-40.79]	3.98 [3.77-4.19]
2018	8.65 [8.07-9.23]	5.19 [4.87-5.5]	35.38 [33.69-37.08]	3.95 [3.7-4.2]	36.72 [34.33-39.11]	3.67 [3.44-3.9]
2019	8.32 [7.71-8.92]	4.98 [4.64-4.32]	34.61 [32.87-36.35]	3.82 [3.54-4.1]	35.28 [32.93-37.63]	3.46 [3.2-3.71]

¹ MDE: AAPC = -5.1 (95% CI, -6.4 to -3.8), $p < 0.001$

² No MDE: AAPC = -5.4 (95% CI, -6.8 to -4.0), $p < 0.001$

³ AUD: AAPC = -3.2 (95% CI, -4.1 to -2.3), $p < 0.001$

⁴ No AUD: AAPC = -5.2 (95% CI, -6.8 to -3.7), $p < 0.001$

⁵ MDE and AUD: AAPC = -3.3 (95% CI, -4.0 to -2.5), $p < 0.001$

⁶ No MDE or AUD: AAPC = -5.7 (95% CI, -7.1 to -4.2), $p < 0.001$

C. \$50,00-\$74,999

Year	MDE¹	No MDE²	AUD³	No AUD⁴	MDE and AUD⁵	No MDE or AUD⁶
2005	19.65 [18.54-20.76]	12.37 [11.68-13.07]	58.92 [57.12-60.72]	9.72 [9.12-10.32]	61.56 [59.48-63.64]	9.52 [8.95-10.08]
2006	18.83 [17.82-19.85]	11.82 [11.23-12.4]	57.63 [55.95-59.3]	9.26 [8.75-9.76]	60.26 [58.07-62.45]	9.06 [8.58-9.53]
2007	19.01 [17.9-20.11]	11.94 [11.28-12.59]	58.01 [56.04-59.99]	9.39 [8.77-10.18]	60.39 [58.03-62.75]	9.1 [8.54-9.66]
2008	18.76 [17.73-19.79]	11.77 [11.14-12.4]	57.51 [55.7-59.33]	9.22 [8.69-9.75]	59.98 [57.7-62.27]	8.96 [8.45-9.47]
2009	17.97 [17.01-18.92]	11.23 [10.65-11.81]	56.12 [54.32-57.93]	8.76 [8.26-9.26]	58.62 [56.5-60.75]	8.51 [8.03-9]
2010	17.1 [16.05-18.15]	10.64 [10.04-11.25]	55.01 [53.12-56.9]	8.4 [7.84-8.97]	57.31 [55.13-59.49]	8.1 [7.59-8.61]
2011	17.18 [16.22-18.14]	10.7 [10.13-11.27]	55.77 [53.9-57.63]	8.64 [8.12-9.16]	57.82 [55.3-60.35]	8.26 [7.77-8.75]
2012	16.78 [15.83-17.73]	10.43 [9.85-11.01]	54.66 [52.86-56.45]	8.29 [7.79-8.8]	56.88 [54.7-59.06]	7.97 [7.49-8.46]
2013	16.74 [15.81-17.68]	10.41 [9.81-11]	54.5 [52.56-56.65]	8.28 [7.76-8.8]	56.75 [54.23-59.27]	7.93 [7.42-8.44]
2014	15.62 [14.7-16.53]	9.66 [9.15-10.16]	52.74 [51.08-54.4]	7.73 [7.28-8.17]	54.93 [52.66-57.2]	7.41 [7-7.82]
2016	11.26 [10.62-11.91]	6.83 [6.46-6.2]	43.03 [41.35-44.71]	5.36 [5.04-5.69]	45.15 [43-47.29]	5.13 [4.83-5.42]
2017	11.52 [10.87-12.16]	6.99 [6.62-7.37]	44.25 [42.58-45.92]	5.62 [5.31-5.94]	45.61 [43.43-47.78]	5.22 [4.92-5.52]
2018	10.74 [9.99-11.49]	6.5 [6.08-6.92]	42.07 [40.06-44.08]	5.17 [4.81-5.53]	43.52 [40.96-46.08]	4.82 [4.49-5.14]
2019	10.34 [9.56-11.12]	6.24 [5.79-6.7]	41.24 [39.15-43.32]	5 [4.61-5.4]	41.99 [39.43-44.55]	4.54 [4.18-4.9]

¹ MDE: AAPC = -4.9 (95% CI, -6.2 to -3.7), *p* < 0.001

² No MDE: AAPC = -5.2 (95% CI, -6.6 to -3.9), *p* < 0.001

³ AUD: AAPC = -2.8 (95% CI, -3.5 to -2.0), *p* < 0.001

⁴ No AUD: AAPC = -5.1 (95% CI, -6.6 to -3.6), *p* < 0.001

⁵ MDE and AUD: AAPC = -2.9 (95% CI, -3.5 to -2.2), *p* < 0.001

⁶ No MDE or AUD: AAPC = -5.5 (95% CI, -6.9 to -4.2), *p* < 0.001

D. ≥ \$75,000

Year	MDE ¹	No MDE ²	AUD ³	No AUD ⁴	MDE and AUD ⁵	No MDE or AUD ⁶
2005	22.51 [21.45-23.57]	14.37 [13.74-15]	62.63 [61.18-64.08]	11.17 [10.62-11.72]	65.91 [64.02-67.8]	11.27 [10.73-11.8]
2006	21.61 [20.51-22.7]	13.73 [13.12-14.35]	61.37 [59.86-62.88]	10.65 [10.12-11.18]	64.67 [62.55-66.8]	10.73 [10.22-11.25]
2007	21.8 [20.65-22.96]	13.87 [13.2-14.54]	61.75 [60.01-63.49]	10.8 [10.16-11.44]	64.8 [62.55-67.05]	10.78 [10.19-11.38]
2008	21.53 [20.41-22.65]	13.68 [13-14.36]	61.26 [59.55-62.98]	10.61 [10.02-11.19]	64.41 [62.18-66.64]	10.62 [10.06-11.18]
2009	20.65 [19.64-21.65]	13.06 [12.47-13.66]	59.91 [58.27-61.54]	10.08 [9.56-10.6]	63.11 [61.06-65.16]	10.1 [9.59-10.61]
2010	19.68 [18.61-20.75]	12.4 [11.81-12.98]	58.82 [57.2-60.44]	9.68 [9.12-10.24]	61.84 [59.8-63.89]	9.62 [9.11-10.13]
2011	19.77 [18.71-20.83]	12.46 [11.84-13.08]	59.56 [57.8-61.32]	9.95 [9.38-10.52]	62.34 [59.85-64.83]	9.8 [9.25-10.35]
2012	19.33 [18.35-20.3]	12.15 [11.58-12.73]	58.47 [56.92-60.02]	9.56 [9.05-10.06]	61.43 [59.37-63.5]	9.47 [8.98-9.96]
2013	19.29 [18.23-20.34]	12.13 [11.45-12.8]	58.42 [56.5-60.35]	9.54 [8.97-10.1]	61.3 [58.81-63.8]	9.42 [8.85-10]
2014	18.03 [17.02-19.03]	11.27 [10.73-11.81]	56.59 [55.02-58.16]	8.91 [8.42-9.4]	59.54 [57.25-61.82]	8.81 [8.35-9.27]
2016	13.1 [12.44-13.77]	8.01 [7.64-8.38]	46.87 [45.39-48.35]	6.21 [5.89-6.53]	49.84 [47.71-51.98]	6.13 [5.83-6.42]
2017	13.4 [12.69-14.1]	8.2 [7.8-8.86]	48.11 [46.56-49.66]	6.5 [6.18-6.83]	50.31 [48.1-52.52]	6.23 [5.92-6.55]
2018	12.51 [11.72-13.29]	7.63 [7.2-8.05]	45.9 [44.06-47.73]	5.98 [5.62-6.35]	48.2 [45.63-50.77]	5.76 [5.41-6.1]
2019	12.05 [11.24-12.85]	7.33 [6.87-7.79]	45.05 [43.19-46.91]	5.79 [5.4-6.19]	46.64 [44.1-49.18]	5.43 [5.05-5.8]

¹ MDE: AAPC = -4.8 (95% CI, -6.0 to -3.6), $p < 0.001$

² No MDE: AAPC = -5.2 (95% CI, -6.5 to -3.8), $p < 0.001$

³ AUD: AAPC = -2.6 (95% CI, -3.3 to -1.8), $p < 0.001$

⁴ No AUD: AAPC = -5.1 (95% CI, -6.6 to -3.6), $p < 0.001$

⁵ MDE and AUD: AAPC = -2.6 (95% CI, -3.2 to -2.0), $p < 0.001$

⁶ No MDE or AUD: AAPC = -5.5 (95% CI, -6.8 to -4.1), $p < 0.001$

Supplemental Table 8. Trends in past-year adjusted prevalence of driving under the influence of alcohol (DUIA) and 95% CI by past-year major depressive episode (MDE) and alcohol use disorder (AUD), stratified by metropolitan status, from 2005 to 2019.

A. Large metro

Year	MDE ¹	No MDE ²	AUD ³	No AUD ⁴	MDE and AUD ⁵	No MDE or AUD ⁶
2005	18.05 [17.17-18.93]	11.29 [10.77-11.8]	55.13 [53.57-56.68]	8.44 [8-8.88]	58.13 [56.08-60.17]	8.35 [7.94-8.77]
2006	17.29 [16.43-18.15]	10.77 [10.31-11.23]	53.81 [52.23-55.38]	8.04 [7.63-8.45]	56.79 [54.55-59.03]	7.94 [7.57-8.32]
2007	17.45 [16.55-18.35]	10.88 [10.39-11.37]	54.2 [52.5-55.9]	8.16 [7.7-8.61]	56.92 [54.6-59.25]	7.98 [7.57-8.4]
2008	17.22 [16.27-18.17]	10.73 [19.16-11.29]	53.69 [51.87-55.51]	8 [7.54-8.47]	56.51 [54.11-58.9]	7.86 [7.42-8.3]
2009	16.48 [15.67-17.29]	10.23 [9.76-10.7]	52.28 [50.64-53.92]	7.6 [7.21-7.98]	55.12 [52.99-57.25]	7.46 [7.09-7.84]
2010	15.67 [14.83-16.51]	9.69 [9.26-10.13]	51.16 [49.54-52.77]	7.29 [6.86-7.71]	53.78 [51.68-55.88]	7.1 [6.73-7.47]
2011	15.74 [14.88-16.61]	9.74 [9.25-10.23]	51.92 [50.09-53.75]	7.5 [7.05-7.94]	54.3 [51.68-56.93]	7.24 [6.82-7.66]
2012	15.37 [14.6-16.14]	9.5 [9.05-9.94]	50.8 [49.23-52.36]	7.19 [6.81-7.57]	53.35 [51.21-55.48]	6.98 [6.62-7.35]
2013	15.34 [14.44-16.24]	9.47 [8.91-10.04]	50.75 [48.71-52.78]	7.18 [6.72-7.63]	53.21 [50.56-55.87]	6.95 [6.49-7.4]
2014	14.29 [13.48-15.11]	8.78 [8.35-9.22]	48.87 [47.28-50.46]	6.69 [6.32-7.07]	51.37 [49.02-53.71]	6.49 [6.14-6.83]
2016	10.26 [9.74-10.78]	6.2 [5.91-6.48]	39.28 [37.88-40.67]	4.63 [4.39-4.87]	41.64 [39.59-43.68]	4.47 [4.26-4.69]
2017	10.5 [9.95-11.04]	6.34 [6.04-6.65]	40.47 [38.02-41.92]	4.85 [4.61-5.09]	42.09 [39.97-44.2]	4.55 [4.32-4.78]
2018	9.78 [9.15-10.41]	5.89 [5.56-6.23]	38.35 [36.62-49.97]	4.46 [4.19-4.73]	40.05 [37.6-42.49]	4.2 [3.95-4.45]
2019	9.41 [8.75-10.07]	5.66 [5.29-6.03]	37.54 [35.74-39.35]	4.32 [4.01-4.62]	38.55 [36.12-40.99]	3.96 [3.67-4.24]

¹ MDE: AAPC = -5.0 (95% CI, -6.3 to -3.7), $p < 0.001$

² No MDE: AAPC = -5.3 (95% CI, -6.7 to -3.9), $p < 0.001$

³ AUD: AAPC = -3.1 (95% CI, -3.7 to -2.5), $p < 0.001$

⁴ No AUD: AAPC = -5.2 (95% CI, -6.7 to -3.6), $p < 0.001$

⁵ MDE and AUD: AAPC = -3.1 (95% CI, -3.8 to -2.4), $p < 0.001$

⁶ No MDE or AUD: AAPC = -5.6 (95% CI, -7.0 to -4.2), $p < 0.001$

B. Small metro

Year	MDE ¹	No MDE ²	AUD ³	No AUD ⁴	MDE and AUD ⁵	No MDE or AUD ⁶
2005	18.7 [17.77-19.64]	11.73 [11.19-12.26]	56.49 [54.98-58]	8.88 [8.43-9.32]	59.36 [57.39-61.33]	8.75 [8.33-9.17]
2006	17.92 [16.94-18.9]	11.2 [10.66-11.73]	55.18 [53.6-56.76]	8.46 [8.03-8.89]	58.04 [55.8-60.27]	8.33 [7.91-8.74]
2007	18.09 [17.09-19.08]	11.31 [10.77-11.86]	55.57 [53.79-57.35]	8.58 [8.07-9.09]	58.17 [55.85-60.48]	8.37 [7.91-8.82]
2008	17.85 [16.87-18.83]	11.15 [10.59-11.71]	55.06 [53.35-56.78]	8.42 [7.97-8.87]	57.75 [55.45-60.06]	8.24 [7.8-8.69]
2009	17.08 [16.17-18]	10.63 [10.11-11.16]	53.66 [51.85-55.46]	7.99 [7.53-8.46]	56.37 [54.18-58.57]	7.82 [7.38-8.26]
2010	16.25 [15.28-17.23]	10.08 [9.55-10.6]	52.54 [50.77-54.31]	7.67 [7.18-8.16]	55.04 [52.87-57.22]	7.44 [7.01-7.87]
2011	16.33 [15.43-17.23]	10.13 [9.63-10.63]	53.3 [51.5-55.1]	7.89 [7.43-8.35]	55.57 [53.01-58.12]	7.59 [7.16-8.01]
2012	15.95 [15.15-16.74]	0.99 [9.43-10.32]	52.18 [50.73-53.63]	7.57 [7.2-7.93]	54.61 [52.58-56.65]	7.32 [6.97-7.68]
2013	15.91 [14.95-16.87]	9.85 [9.26-10.45]	52.13 [50.07-54.18]	7.55 [7.07-8.04]	54.48 [51.86-57.11]	7.29 [6.81-7.77]
2014	14.83 [13.96-15.7]	9.14 [8.69-9.59]	50.25 [48.66-51.85]	7.05 [6.65-7.44]	52.64 [50.32-54.96]	6.8 [6.44-7.17]
2016	10.67 [10.1-11.23]	6.45 [6.15-6.75]	40.6 [39.19-42.02]	4.88 [4.62-5.13]	42.88 [40.83-44.93]	4.7 [4.46-4.93]
2017	10.91 [10.31-11.51]	6.61 [6.28-6.94]	41.81 [40.29-43.33]	5.12 [4.85-5.38]	43.33 [41.19-45.48]	4.78 [4.53-5.03]
2018	10.17 [9.5-10.83]	6.14 [5.79-6.49]	39.66 [37.9-41.42]	4.7 [4.41-4.99]	41.28 [38.82-43.73]	4.41 [4.15-4.68]
2019	9.79 [9.09-10.48]	5.9 [5.51-6.28]	38.85 [37.02-40.67]	4.55 [4.23-4.87]	39.77 [37.33-42.21]	4.16 [3.85-4.46]

¹ MDE: AAPC = -5.0 (95% CI, -6.3 to -3.7), $p < 0.001$

² No MDE: AAPC = -5.0 (95% CI, -6.4 to -3.5), $p < 0.001$

³ AUD: AAPC = -2.9 (95% CI, -3.7 to -2.1), $p < 0.001$

⁴ No AUD: AAPC = -5.2 (95% CI, -6.6 to -3.6), $p < 0.001$

⁵ MDE and AUD: AAPC = -3.0 (95% CI, -3.7 to -2.3), $p < 0.001$

⁶ No MDE or AUD: AAPC = -5.6 (95% CI, -6.9 to -4.2), $p < 0.001$

C. Non-metro

Year	MDE¹	No MDE²	AUD³	No AUD⁴	MDE and AUD⁵	No MDE or AUD⁶
2005	17.15 [16.2-18.09]	10.68 [10.09-11.27]	54.32 [52.51-56.12]	8.19 [7.68-8.7]	57.06 [54.89-59.24]	8.03 [7.55-8.51]
2006	16.42 [15.46-17.37]	10.19 [9.63-10.75]	52.99 [51.19-54.79]	7.8 [7.33-8.27]	55.72 [53.33-58.1]	7.63 [7.18-8.09]
2007	16.57 [15.63-17.52]	10.29 [9.74-10.84]	53.39 [51.45-55.32]	7.91 [7.4-8.43]	55.85 [53.41-58.29]	7.67 [7.2-8.14]
2008	16.35 [15.48-17.22]	10.14 [9.62-10.67]	52.88 [51.07-54.68]	7.77 [7.32-8.21]	55.43 [53.09-57.78]	7.55 [7.13-7.97]
2009	15.64 [14.84-16.43]	9.67 [9.19-10.15]	51.46 [49.74-53.18]	7.37 [6.97-7.77]	54.04 [51.91-56.16]	7.17 [6.78-7.55]
2010	14.86 [13.95-15.78]	9.16 [8.64-9.69]	50.34 [48.44-52.23]	7.07 [6.58-7.55]	52.7 [50.43-54.96]	6.82 [6.38-7.26]
2011	14.93 [14.08-15.79]	9.21 [8.7-9.71]	51.1 [49.27-52.93]	7.27 [6.84-7.7]	53.22 [50.6-55.84]	6.95 [6.53-7.38]
2012	14.58 [13.81-15.35]	8.97 [8.51-9.44]	49.98 [48.26-51.69]	6.97 [6.56-7.39]	52.26 [50.07-54.45]	6.71 [6.31-7.1]
2013	14.55 [13.75-15.35]	8.95 [8.44-9.46]	49.93 [47.93-51.92]	6.96 [6.53-7.39]	52.13 [49.59-54.66]	6.67 [6.26-7.09]
2014	13.55 [12.72-14.38]	8.3 [7.84-8.76]	48.05 [46.29-49.81]	6.49 [6.08-6.9]	50.28 [47.86-52.7]	6.23 [5.84-6.61]
2016	9.7 [9.15-10.26]	5.84 [5.52-6.17]	38.5 [36.89-40.11]	4.49 [4.21-4.76]	40.58 [38.45-42.72]	4.29 [4.04-4.55]
2017	9.93 [9.36-10.49]	5.98 [5.65-6.32]	39.68 [38.07-41.3]	4.7 [4.44-4.97]	41.03 [38.86-43.2]	4.37 [4.11-4.63]
2018	9.24 [8.61-9.87]	5.56 [5.2-5.91]	37.57 [35.66-39.49]	4.32 [4.02-4.62]	39 [36.5-41.51]	4.03 [3.75-4.31]
2019	8.89 [8.27-9.51]	5.34 [4.98-5.69]	36.78 [34.95-38.6]	4.18 [3.88-4.49]	37.53 [35.14-39.91]	3.79 [3.51-4.08]

¹ MDE: AAPC = -5.0 (95% CI, -6.3 to -3.7), $p < 0.001$

² No MDE: AAPC = -5.3 (95% CI, -6.6 to -3.9), $p < 0.001$

³ AUD: AAPC = -3.0 (95% CI, -2.2 to -6.9), $p < 0.001$

⁴ No AUD: AAPC = -5.1 (95% CI, -6.6 to -3.6), $p < 0.001$

⁵ MDE and AUD: AAPC = -3.1 (95% CI, -3.8 to -2.4), $p < 0.001$

⁶ No MDE or AUD: AAPC = -5.6 (95% CI, -6.9 to -4.2), $p < 0.001$