

1 **Title: Multiple Introductions of Mpox virus to Ireland during the 2022 International**  
2 **Outbreak**

3  
4 **Authors:** Gabriel Gonzalez,<sup>1,2,3</sup> Michael Carr,<sup>1,3</sup> Tomás M. Kelleher,<sup>1</sup> Emer O’Byrne,<sup>1</sup>  
5 Weronika Banka,<sup>1</sup> Brian Keogan,<sup>1</sup> Charlene Bennett,<sup>1</sup> Geraldine Franzoni,<sup>1</sup> Patrice Keane,<sup>4</sup>  
6 Luke W. Meredith,<sup>8</sup> Nicola Fletcher,<sup>5,6</sup> Jose Maria Urtasun-Elizari,<sup>1</sup> Jonathan Dean,<sup>1</sup> Brendan  
7 Crowley,<sup>4</sup> Derval Igoe,<sup>7</sup> Eve Robinson,<sup>7</sup> Greg Martin,<sup>7</sup> Jeff Connell,<sup>1</sup> Cillian F. De Gascun,<sup>1</sup>  
8 Daniel Hare<sup>1</sup>

9  
10 **Affiliations**

11 <sup>1</sup> UCD National Virus Reference Laboratory, University College Dublin, Belfield, D04  
12 E1W1, Ireland

13 <sup>2</sup> Japan Initiative for World-leading Vaccine Research and Development Centers, Hokkaido  
14 University, Institute for Vaccine Research and Development, Hokkaido 001-0021, Japan

15 <sup>3</sup> International Collaboration Unit, International Institute for Zoonosis Control, Hokkaido  
16 University, Sapporo, Hokkaido 001-0020, Japan

17 <sup>4</sup> Department of Virology, St. James’s Hospital, Dublin, Ireland

18 <sup>5</sup> Veterinary Sciences Centre, University College Dublin, Belfield, D04 E1W1, Ireland

19 <sup>6</sup> Centre for Experimental Pathogen Host Research, University College Dublin, Belfield, D04  
20 E1W1, Ireland

21 <sup>7</sup> Health Protection Surveillance Centre, Ireland

22 <sup>8</sup> Department of Pathology, University of Cambridge, Cambridge, United Kingdom

23

24 **Correspondence:** Daniel Hare (daniel.hare@ucd.ie)

25

26 **Abstract**

27 **Background:** mpox (formerly Monkeypox) virus (MPXV) was considered a rare zoonotic  
28 disease prior to May 2022, when a global epidemic of cases in non-endemic countries led to  
29 the declaration of a Public Health Emergency of International Concern. Previously, mpox  
30 infection was associated with symptoms similar to smallpox, although substantially less  
31 severe, including fever, an extensive characteristic rash and swollen lymph nodes.

32 **Aim:** Elucidating the origin and molecular characteristics of the virus circulating in the  
33 Republic of Ireland in the period between May and November 2022.

34 **Methods:** Whole-genome sequencing of all MPXV cases (80%; n=178/219) analysed against  
35 sequences from public databases (n=2695). Bayesian approaches were used to infer the  
36 divergence time between sequences from different subclades and transmission events  
37 involving different countries.

38 **Results:** The circulating virus belonged to the clade IIb B.1 lineage and, notably, the  
39 presence of twelve separable and highly-supported subclades consistent with multiple  
40 introductions into the country. Such a hypothesis of multiple importation events was  
41 supported further by the estimation of the time to the divergence of subclades. Additionally,  
42 inferred MPXV transmissions involving different countries and continents were indicative of  
43 an extended international spread. The analysis of the mutations in the Irish sequences  
44 revealed 93% of the mutations were from cytosine to thymine (or from guanine to adenine),  
45 leading to a high number of non-synonymous mutations across the subclades.

46 **Conclusion:** In the context of extremely high national sequencing coverage, we provide new  
47 insights into the international origin and transmission dynamics supporting multiple  
48 introductions into the Republic of Ireland.

49

50 **Keywords:** mpox virus, monkeypox virus, genome, epidemiological analysis, epidemic  
51 dynamics.

52

53 **Conflict of Interests.**

54 None to declare.

55

## 56 **Introduction**

57 Mpox (Monkeypox) virus (MPXV) is a double-stranded DNA virus in the genus  
58 *Orthopoxvirus* within the *Poxviridae* family (Xiang and White, 2022) and is regarded as a  
59 High consequence Infectious Agent (HCID). Despite its name, the natural reservoir of the  
60 virus remains unknown but it is transmitted among small mammals, such as rodents (W.H.O.,  
61 2023). The length of the MPXV genome is approximately 197.2 kb encoding a predicted 191  
62 proteins, and is genetically closely related to the variola (smallpox) virus. Mpox symptoms  
63 can last between two and four weeks and include fever, sore throat, headache, muscle aches,  
64 low energy, swollen lymph nodes and rash; however, the combination and severity of these  
65 symptoms varies among patients and some severe cases can develop skin lesions (Saxena et  
66 al., 2023). The virus is transmitted to humans by direct contact with infected animals, through  
67 scratches and bites, or materials, such as contaminated clothes or needles, or by contact with  
68 lesions of infected people. Sexual transmission appears to be a major route of transmission, in  
69 particular during the recent outbreak, (W.H.O., 2023; Sun et al., 2023).

70 Two major clades of MPXV have been recognised as circulating endemically in  
71 Africa, one in Central Africa (clade I) and the other one in West Africa (clade II) with  
72 differing transmissibility and case fatality rates (Quarleri et al., 2022). In this context, an  
73 increased number of cases started appearing internationally in May 2022, and were  
74 characterised as part of the West African clade II. Based on viral phylogenetic properties and  
75 epidemiological evidence of increased human-to-human transmission outside of endemic  
76 geographic locations, MPXV cases in the context of the 2022 outbreak were classified within  
77 a distinct subclade, termed I Ib (Gigante et al., 2022). The outbreak has been reported across  
78 multiple countries on different continents and has differed from earlier outbreaks of clade I  
79 and IIa, in terms of host age (54.3% of individuals in their thirties), sex (predominantly male),  
80 and sexual transmission the most commonly reported (Bragazzi et al., 2023).

81 The overall case fatality rate of mpox has been estimated at 8.7%, though substantial  
82 differences have been observed between clades: estimated as 10.6% for clade I, versus 1-  
83 3.6% for clade IIa (Bunge et al., 2022; Americo et al., 2023), and a mortality rate in the range  
84 0.01-1.81% for Clade I Ib associated with the 2022 event (Reda et al., 2022). Whilst the 2022  
85 international outbreaks of MPXV clade I Ib had milder clinical severity, therefore, it  
86 represented a significant public health concern due to the significant increase in reported  
87 sexual transmission and concerns regarding “spill over” into other more susceptible  
88 populations (Sun et al., 2023; Borges et al., 2023). Due to the unprecedented nature of the  
89 mpox epidemic outbreaks outside endemic African countries and its classification as an

90 HCID, the WHO declared a Public Health Emergency of International Concern (PHEIC) in  
91 July 2022 (Wenham and Eccleston-Turner, 2022).

92 MPXV clade case designation by genomic analyses facilitates an evidence-based  
93 assessment of transmissibility and the ability to distinguish new importation events. To  
94 establish a comprehensive genomic epidemiological baseline for national surveillance in the  
95 Republic of Ireland, whole-genome sequencing (WGS) was performed at the National Virus  
96 Reference Laboratory for all available MPXV laboratory-confirmed positive cases. Genome  
97 sequences (n=178 sequences) were obtained covering an extremely high percentage (>80% of  
98 cases) of all cases between May and November 2022 (n=219 cases). This comprehensive  
99 MPXV genomic dataset was analysed further to elucidate the dynamics of the 2022 MPXV  
100 epidemic in the Republic of Ireland to ascertain whether single or multiple introductions of  
101 the virus were responsible.

## 102 **Materials & Methods**

### 103 **Sample collection.**

104 Samples (predominantly swabs of skin lesions/pustules transported in virus transport media ,  
105 VTM)) were received from 219 symptomatic individuals who presented for medical attention.  
106 Following lysis and inactivation in a Containment Level 3 (CL3) facility with a VTM to  
107 guanidinium isothiocyanate lysis buffer mixed in a ratio of 1:2.5, total nucleic acids were  
108 extracted on the Roche MagNA Pure 96 platform as follows: 200 µL of swab material in  
109 VTM was added to 500 µL Roche lysis buffer, and, following external lysis, were extracted  
110 on the Roche MagNA Pure 96 system (input volume 450 µL and eluted in 100 µL).  
111 Alternatively, DNA from 200 µL of material in VTM was extracted using the Qiagen  
112 QIAamp DNA Mini kit, according to the manufacturer's instructions.

113

### 114 **Molecular Diagnostics.**

115 Real-time PCR was performed on the ABI7500 SDS platform employing initially the pan-  
116 *Orthopoxvirus* zoonotic (non-variola) RT-PCR kit (Altona); for logistical reasons the assay  
117 was switched to the MPXV generic assay described by Li et al. (Li et al., 2010). However, a  
118 CDC notification of a rare but significant deletion in the target TNF gene motivated to  
119 change the assay to the LDT pan-*Orthopoxvirus* assay currently in use (Schroeder and  
120 Nitsche, 2010).

121

### 122 **Whole-Genome Sequencing.**

123 MPXV qPCR positive samples were processed for WGS following a tiled amplicon approach  
124 and next-generation sequencing (NGS) approach employing Oxford Nanopore Technologies  
125 (ONT). Tiled amplicons were generated from each sample employing two separate MPXV  
126 primer pools (P/N 50025, MBS), according to the manufacturer's instructions (Matthijs  
127 Welkers et al., 2022). Amplicons were barcoded employing the Rapid Barcoding Kit 96  
128 (SQK-RBK110.96; ONT) and loaded onto a R9.4.1 flow cell (FLO-MIN106D; ONT)  
129 with 23 samples and a negative control on each run. The data generated were basecalled and  
130 demultiplexed with Guppy v5.1.13 (ONT). The sequence reads were trimmed to remove  
131 adapters and barcoded sequences with Porechop v.0.3.2pre  
132 (<https://github.com/rrwick/Porechop>). NGS reads were assembled employing a MPXV  
133 genome sampled in November of 2021 in the United States of America (GenBank  
134 ON676708) as the reference. The assembled consensus genome sequences were deposited in  
135 GenBank (<https://www.ncbi.nlm.nih.gov/genbank/>) under accession numbers OR146268-

136 OR146445 and also in GISAID (Supplementary Table S2). MPXV clades were assigned  
137 following the automatic assignment by GISAID after data submission.

138 All multiple sequence alignments (MSA) were performed with MAFFT by the  
139 algorithm FFT-NS-1 (Kato et al., 2019). Phylogenies were inferred using a maximum-  
140 likelihood (ML) approach with RAxML using the general time reversible (GTR) substitution  
141 model and support for the branches was estimated with a bootstrap approach considering 500  
142 repetitions (Stamatakis, 2014). MSA included ON676708 as reference to annotate the coding  
143 regions and to analyse the effects of the nucleotide mutations as amino acid substitutions in  
144 the encoded proteins with only mutations on nucleotides supported by sequence depth > 20  
145 reads analysed further.

146

#### 147 **Inferring time to the most recent common ancestor.**

148 The divergence times of the different MPXV subclades to the most recent common ancestor  
149 (tMRCA) were inferred using BEAST2 v2.5.7 (Bouckaert et al., 2019). The reference  
150 ON676708 was employed as an outgroup for rooting the tree. The substitution model was  
151 chosen using the model test in RAxML GUI (Edler et al., 2021) and the Bayesian information  
152 criterion (BIC), choosing the Hasegawa-Kishino-Yano (HKY) substitution model as the best  
153 fit for the sequences requiring the least amount of parameters with a proportion of invariant  
154 sites (+I). The different models with a constant clock or an uncorrelated Optimised Relaxed  
155 Clock (ORC) (Douglas et al., 2021), with the population modelled either as constant size,  
156 exponential growth or Bayesian skyline, were considered and compared to identify the most  
157 likely model among the six combinations. All models were calibrated with the collection date  
158 of the samples. Each model was executed for  $10^8$  steps sampling every  $10^4$  to assure an  
159 Effective Sample Size (ESS) > 100 for all parameters in the models, i.e. the number of  
160 effectively independent draws for each parameter from the posterior distribution that the  
161 Markov chain was equivalent to. The model parameters were summarised and explored with  
162 Tracer 1.7.1, and tree of the best model was summarised using the ‘treannotator’ programme  
163 in the BEAST bundle to extract the divergence time and the mutation rate of the subclades.

164

#### 165 **Testing association with international MPXV genome sequences.**

166 Contemporaneous sequences were downloaded from the MPXV database in GISAID  
167 (<https://gisaid.org/>) with the filtering criteria requiring near complete genome sequences and  
168 high quality (>90% genome coverage) (Supplementary Table S1). Additionally, reference  
169 sequences from previous MPXV outbreaks were downloaded from GenBank (Supplementary

170 Table S1). The association of Irish genome sequences to sequenced cases from other  
171 countries was tested by separating the group of Irish sequences into the following twelve IIb  
172 subclades: B.1, B.1.1, B.1.2, B.1.3, B.1.5, B.1.7, B.1.8, B.1.9, B.1.10, B.1.11, B.1.12, and  
173 B.1.15. The MSAs of these groups included GISAID sequences from the same subclades to  
174 test the phylogenetic relationships and putative origins of the MPXV with the Bayesian  
175 inference approach of Outbreaker2 (Campbell et al., 2018), using the collection date reported  
176 in GISAID and assuming an infectious period of 28 days with the highest probability of  
177 transmission between days 6 and 15, following the description of cases and transmission via  
178 skin lesions (W.H.O., 2023). The assumed mutation rate was  $5 \times 10^{-5}$ , the lower end of the  
179 mutation rate range from the BEAST analysis. The Outbreaker2 inference was run for  $10^6$   
180 steps in each of the eleven groups, with 10% burn-in and sampling every 2500 steps. Among  
181 the Outbreaker2 results of transmissions, we considered as evidence of transmission between  
182 two samples those links with support  $> 0.3$  and suggesting less than two generations.

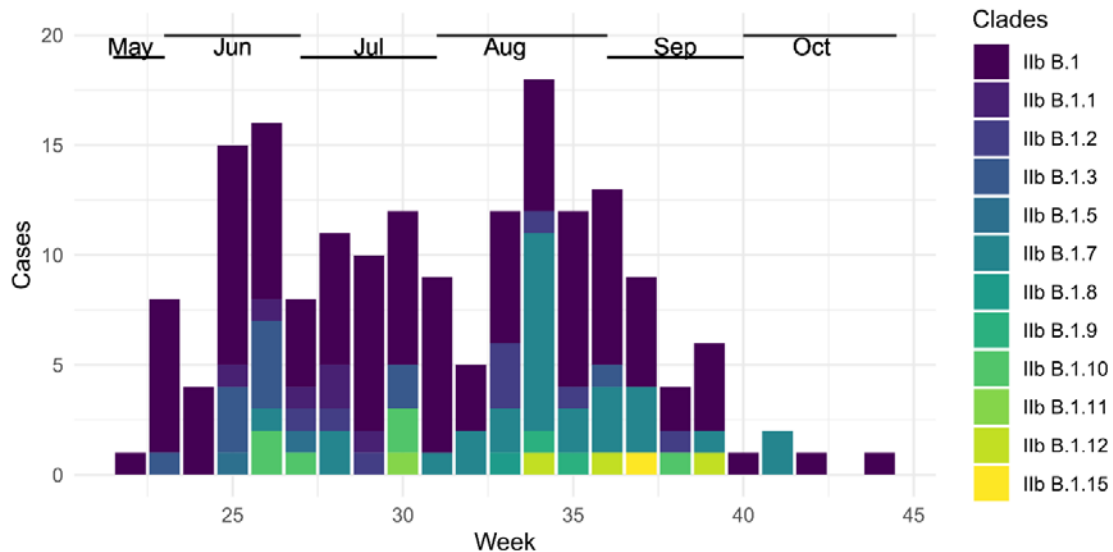
183

#### 184 **Ethical approval.**

185 The analysis of the data was approved by the University College Dublin Human Research  
186 Ethics Committee – Sciences analysed data with the Research Ethics Reference Number: LS-  
187 LRSD-23-197-Gonzalez-Hare.

188 **Results**

189 **Characteristics of the 2022 MPXV outbreak.** The 219 laboratory-confirmed MPXV qPCR-  
190 positive samples analysed in the present study were collected between May and November  
191 2022. As reported by the Health Service Executive (HSE) of the Republic of Ireland (ROI),  
192 the majority of cases were males with a median age of 35 years with 79.8% aged between 18-  
193 44 years (HPSC, 2023). These cases were distributed over time with the peak in August (> 60  
194 cases) (Fig. 1).



195

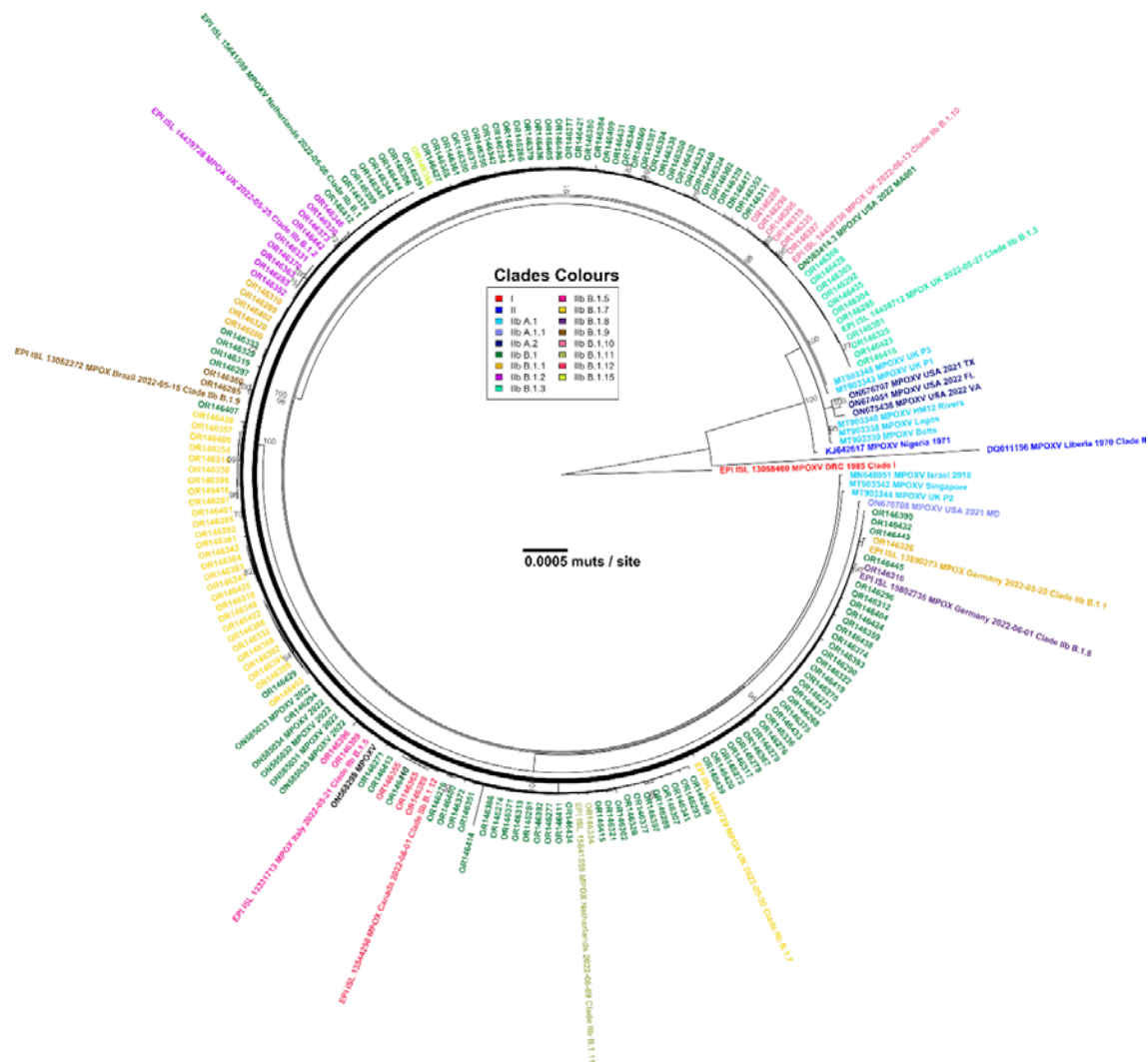
196 **Figure 1. MPXV cases reported in the Republic of Ireland.** The horizontal and vertical  
197 axes represent the epidemiological week of 2022 when the samples were received and the  
198 total number of reported cases across the country, respectively. The distribution of subclades  
199 assigned by GISAID has been coloured according to the legend. Months are shown on the top  
200 of the panel.

201

202 **WGS of Irish MPXV in 2022.** Among the 219 cases, 178 (80%) were successfully  
203 sequenced, of which 175 met the  $\geq 90\%$  coverage threshold with an average genome coverage  
204 of  $99.3 \pm 2\%$  (Supplementary Table S2). The high coverage of the sequences facilitated the  
205 mutational analysis compared to the MPXV clade IIb reference genome ON676708, which  
206 was chosen as reference. The transition/transversion ratio was 22.8, with 286 positions  
207 showing mutations relative to the reference genome. Of the total number of mutations, 47%  
208 and 46% were transitions C to T and G to A, respectively (Supplementary Table S3). Relative  
209 to the reference genome annotation, these mutations were approximately seven times more  
210 frequent in coding regions than in the non-coding regions (Supplementary Table S4).  
211 Moreover, 154 mutations were non-synonymous mutations while 100 were synonymous  
212 mutations with 32 characterised as non-coding mutations (Supplementary Table S4). These



213 mutations distributed into the different GISAID-assigned clades as follows: a total of 11  
214 mutations were considered common to all sequenced samples with their presence in >90% of  
215 the sequenced samples; 194 mutations were identified as isolated single nucleotide variants  
216 (SNV) present in only one sequence, among them, 132 (n=105) were in the IIB B.1 subclade  
217 (dark green sequences in Fig. 2). Conversely, a total of 104 SNVs were distributed and  
218 characteristic to each subclade (Fig. 2), i.e. common to all the sequences under the same  
219 subclade in the format IIB B.1.\* as follows - B.1.1: 6 SNV (n=6), B.1.2: 20 (n=9), B.1.3: 10  
220 (n=11), B.1.5: 7 (n=2), B.1.7: 27 (n=28), B.1.8: 8 (n=1), B.1.9: 5 (n=2), B.1.10: 13 (n=6),  
221 B.1.11: 4 (n=1), B.1.12: 2 (n=3), and B.1.15: 2 (n=1). The remaining 28 mutations  
222 corresponded to variants within each subclade. These SNV have accumulated following  
223 divergence among subclades and point mutations were still accumulating, as was most  
224 evident in the basal subclade IIB B.1.

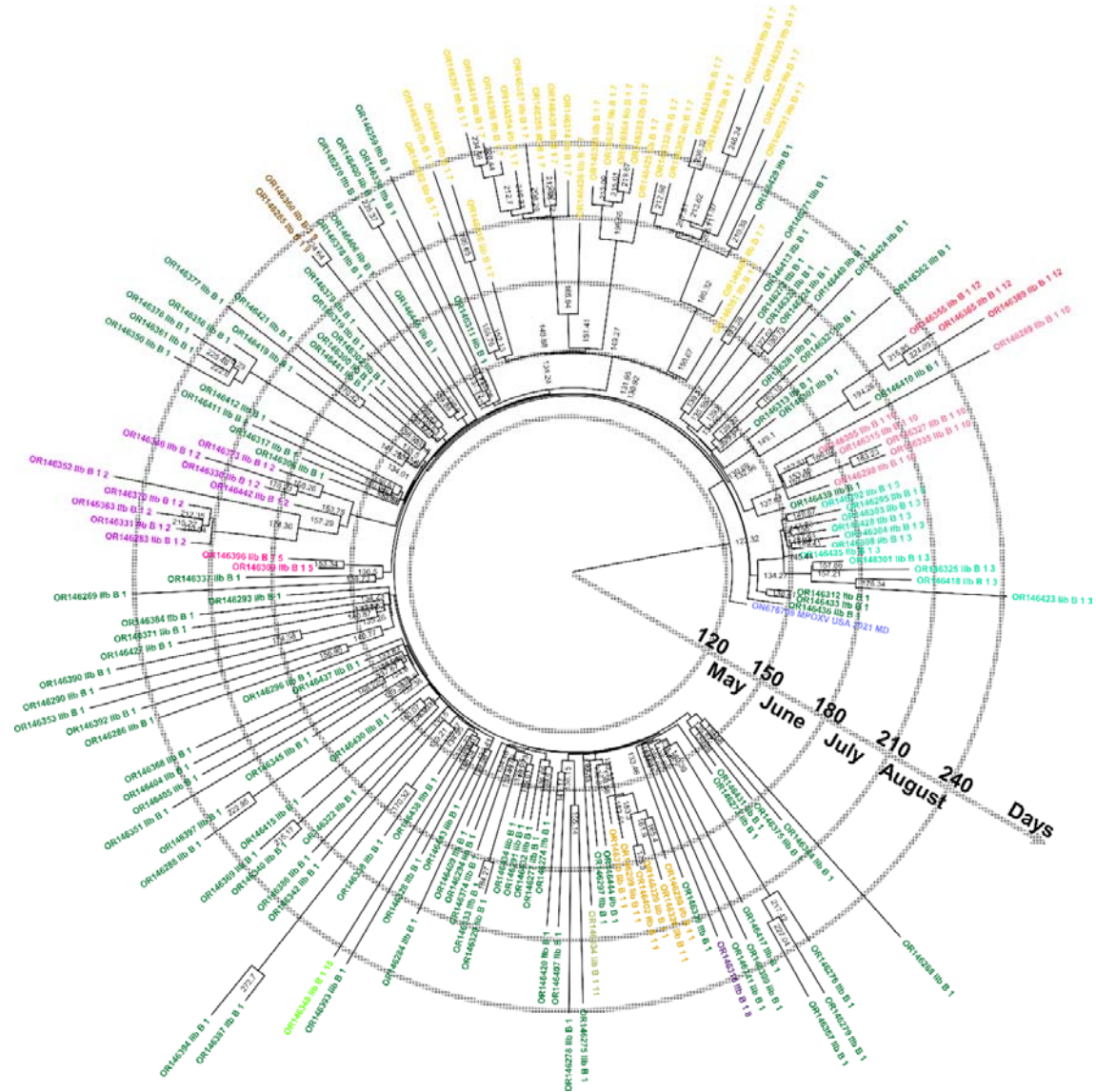


226 **Figure 2. The MPXV phylogenetic tree for whole-genome sequences of Irish cases and**  
227 **reference genomes.** The tree was rooted with an MPXV Clade I sequence (GISAID acc.  
228 number: EPI\_ISL\_13058460) and other reference sequences were added to corroborate the  
229 clade assignments for the sequences. All external sequences show the corresponding  
230 accession number and short description of their origin. Support for branching nodes,  
231 estimated with a bootstrap approach (500 repetitions), is shown for support  $\geq 70\%$ . Tip names  
232 have been coloured according to the subclade as shown on the colour legend. The scale of the  
233 tree represents  $5 \times 10^{-4}$  mutations per nucleotide site.  
234

235 The subclades assigned by GISAID, the number of characteristic mutations per  
236 subclade, and the phylogenetic relationships among our samples and sequences from previous  
237 outbreaks confirmed the identity of the cases as belonging to the MPXV clade IIb B.1 (Fig. 2).  
238 Furthermore, at least twelve phylogenetically separable and highly-supported subclades were  
239 suggested to circulate simultaneously in ROI during the 2022 epidemic (Fig. 2). The cases  
240 identified during the outbreak belonged to the subclade IIb B.1, however, during the 20  
241 weeks period when these cases were detected, distinct variants were identified suggesting at  
242 least two alternative hypotheses to explain these findings: (i) the twelve subclades were  
243 introduced to ROI in a single initial wave that evolved locally, or (ii) a flow of new subclades  
244 to the country in multiple separate importation events.  
245

246 **Dating the divergence of the Irish MPXV subclades.** To investigate further the possible  
247 origins of the multiple subclades circulating in ROI, the divergence times of the different  
248 subclades were inferred employing a Bayesian approach. The comparison of the considered  
249 Bayesian models demonstrated that a combination of a Bayesian skyline modelling of the  
250 population growth with an uncorrelated relaxed clock was the model with the highest  
251 likelihood for the observed genomic data (Table 1). The dating of the tMRCA of the different  
252 subclades to mid-May (2022.37, 95% HPD [2022.28, 2022.40], corresponding to  
253 epidemiological weeks 15 and 21 of 2022, respectively) was consistent with divergence prior  
254 to the outbreaks in the ROI (Table 1, Fig. 3). This also provided evidence in support of the  
255 hypothesis that multiple introductions, not a single importation event, of new and diverse  
256 variants into Ireland occurred throughout the 2022 outbreak event. Furthermore, while other  
257 phylogenetic groups were observed to have diverged as early as the last week of May, at least  
258 two clades, namely IIb B.1.9 and B.1.12, diverged in August 2022 and, given that no earlier  
259 cases assigned to these clades were detected, it is considered more likely they were  
260 introduced into the country later in the course of the outbreak. Additionally, other sub-  
261 clusters in IIb B.1 and B.1.2 are suggested to have diverged after August and as late as

262 September 2022 (Fig. 3). It is noteworthy that despite the best fit being a Bayesian skyline  
263 with the ORC, all the inferred models had very similar dates for the tMRCA and relatively  
264 high mutation rates in the range [7.2E-5, 1.3E-4] which is notably higher than the  $10^{-6}$   
265 mutation rate previously reported for the family *Orthopoxviruses* (Babkin et al., 2022).



266

267 **Figure 3. Bayesian inferred phylogenetic tree with the most likely time of the MRCA for**  
268 **the different clades in the Republic of Ireland.** The circular tree represents the 175 ROI  
269 sequences rooted with ON676708 (IIB A.1). The nodes show the most likely day of the year  
270 2022 for the MRCA, the scale for these days and the corresponding months are shown as blue  
271 concentric circles. Clades are coloured as in Fig. 2 and have been added to the tip names for  
272 reference.

273

274 **Table 1. Comparison of Bayesian models and the inferred time to the MRCA of the MPXV clades in the Republic of Ireland.**

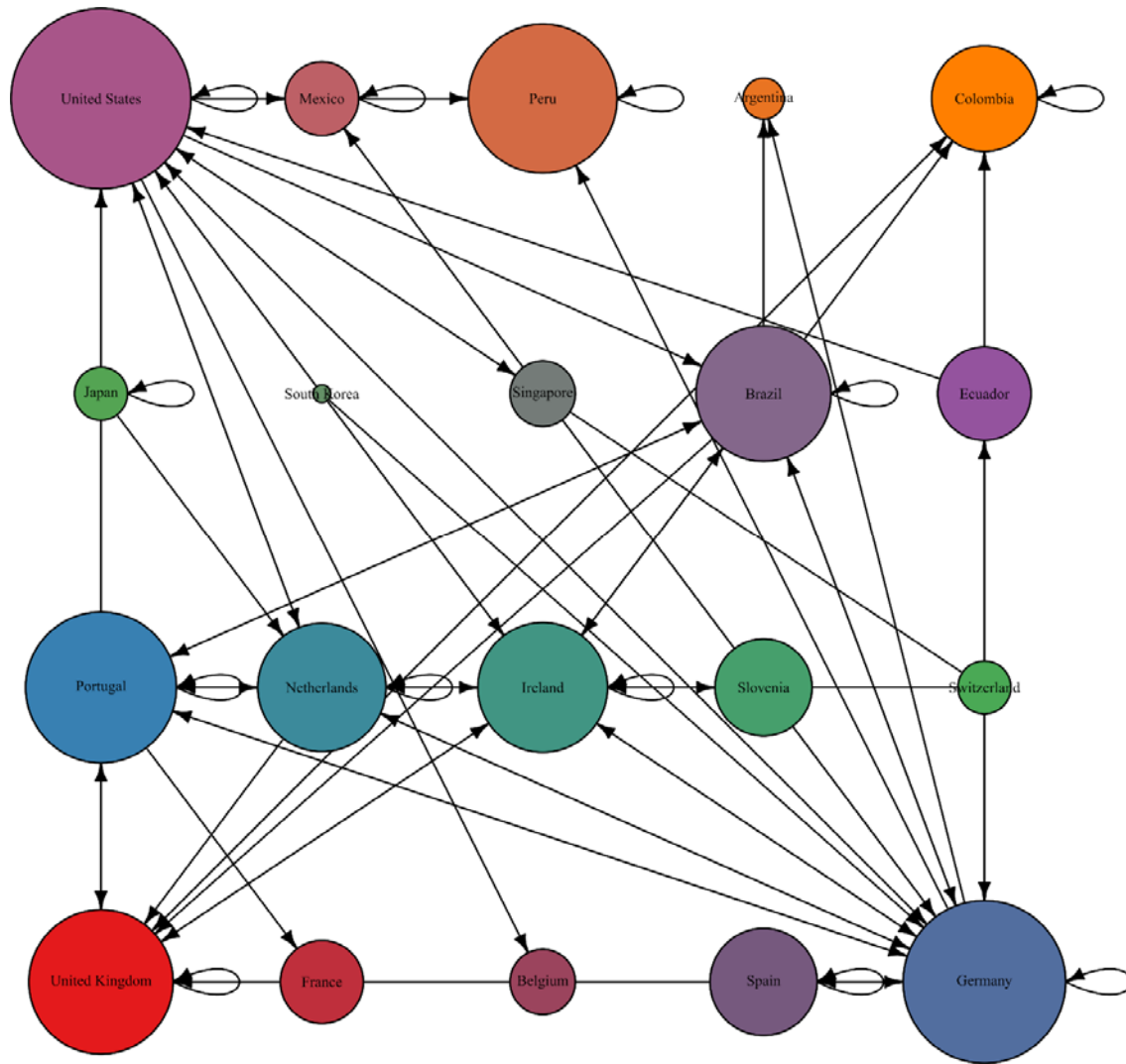
Population		Bayesian Model to Estimate time of the MRCA						Week (Month)
		Constant Size	Constant Size	Exponential Growth	Exponential Growth	Bayesian skyline	Bayesian skyline	
Molecular clock		Strict Clock	ORC	Strict Clock	ORC	Strict Clock	ORC	
<b>Mutation Rate</b>		1E-4	1E-4	1E-4	1E-4	9.6E-5	9.4E-5	
<b>95% HPDI</b>		[7.7E-5, 1.2E-4]	[7.4E-5, 1.4E-4]	[7.6E-5, 1.3E-4]	[7.2E-5, 1.3E-4]	[7.8E-5, 1.1E-4]	[7.2E-5, 1.2E-4]	
<b>Likelihood</b>		-266137	-266087	-266138	-266086	-266126	-266073	
<b>Date of MRCA</b>	IIb B.1	2022.18	2022.04	2022.20	2022.15	2022.37	2022.37	W20
<b>95% HPDI</b>		[2021.63, 2022.33]	[2021.66, 2022.27]	[2022.05, 2022.30]	[2021.93, 2022.29]	[2022.31, 2022.40]	[2022.28, 2022.4]	(16-22 May)
	IIb B.1.1	2022.43	2022.43	2022.43	2022.43	2022.42	2022.42	W22
		[2022.38, 2022.45]	[2022.36, 2022.45]	[2022.39, 2022.45]	[2022.37, 2022.45]	[2022.39, 2022.45]	[2022.39, 2022.45]	(30 May - 05 June)
	IIb B.1.2	2022.43	2022.45	2022.44	2022.45	2022.42	2022.42	W22
		[2022.35, 2022.48]	[2022.37, 2022.49]	[2022.35, 2022.48]	[2022.38, 2022.49]	[2022.39, 2022.45]	[2022.39, 2022.46]	(30 May - 05 June)
	IIb B.1.3	2022.37	2022.35	2022.37	2022.36	2022.40	2022.40	W21
		[2022.30, 2022.41]	[2022.23, 2022.41]	[2022.31, 2022.41]	[2022.27, 2022.41]	[2022.38, 2022.41]	[2022.38, 2022.41]	(23-29 May)
	IIb B.1.5	2022.29	2022.40	2022.30	2022.40	2022.41	2022.42	W22
		[2022.15, 2022.40]	[2022.20, 2022.45]	[2022.16, 2022.41]	[2022.27, 2022.45]	[2022.39, 2022.44]	[2022.40, 2022.45]	(30 May - 05 June)
	IIb B.1.7	2022.38	2022.41	2022.39	2022.42	2022.41	2022.41	W22
		[2022.26, 2022.45]	[2022.27, 2022.46]	[2022.27, 2022.45]	[2022.30, 2022.46]	[2022.38, 2022.43]	[2022.38, 2022.44]	(30 May - 05 June)
	IIb B.1.9	2022.63	2022.62	2022.62	2022.62	2022.62	2022.62	W31
		[2022.60, 2022.63]	[2022.60, 2022.63]	[2022.59, 2022.63]	[2022.58, 2022.63]	[2022.60, 2022.63]	[2022.58, 2022.63]	(01-07 August)
	IIb B.1.10	2022.41	2022.41	2022.42	2022.42	2022.42	2022.42	W22
		[2022.34, 2022.45]	[2022.31, 2022.46]	[2022.35, 2022.46]	[2022.35, 2022.46]	[2022.39, 2022.44]	[2022.39, 2022.45]	(30 May - 05 June)
	IIb B.1.12	2022.61	2022.60	2022.60	2022.59	2022.61	2022.60	W32
		[2022.56, 2022.63]	[2022.54, 2022.63]	[2022.54, 2022.63]	[2022.52, 2022.63]	[2022.57, 2022.63]	[2022.52, 2022.63]	(08-14 August)

275

276

277

278 **Uncovering possible origins of the MPXV introductions to Ireland.** As mentioned above,  
279 the clade IIb subclade B.1 was predominant during the 2022 MPXV outbreak in ROI (n=105),  
280 and consistent with the distribution in other locations for the same time period with between  
281 33% and 74% of sequences from this subclade (Table 2). As some of the other circulating  
282 subclades were suggested to have diverged some time prior to the first MPXV case detected  
283 in the ROI (31 May 2022), the subclade sequences were compared with sequences from other  
284 geographical locations to identify putative origins for the different clades and to explore  
285 further the evidence for any transmission events within these individuals (Fig. 4,  
286 Supplementary Fig. S1 and Supplementary Fig. S2). Despite the conservative approach used  
287 to infer the transmission, requiring less than two generations and a support of > 30% in the  
288 Outbreaker2 inference, many nodes were connected across the different countries and  
289 continents, reflecting the international transmission dynamics. Many of the inferred infectious  
290 links supported the transmission between cases from the same geographical location as  
291 community transmission in IIb B.1.9 and B.1.10 (Supplementary Fig. S2C-D) or the more  
292 numerous cases in IIb B.1.1, B.1.2 and B.1.7 (Supplementary Fig. S1A, B, D). The Bayesian  
293 analysis inferred strong support for importation events based on the collection dates and  
294 phylogenetic relationships among the sequences. The inference suggested importations into  
295 ROI from both Europe (United Kingdom, Portugal, Germany, Switzerland) and North and  
296 South America (the United States of America, Colombia, and Brazil) (Fig. 4).



297

298 **Figure 4. Summary of inferred transmissions among countries detected in the subclades**  
 299 **detected in the Republic of Ireland.** The nodes represent countries where the lineages of  
 300 subclades in the clade IIb B.1 were sequenced. The size of the nodes reflects the number of  
 301 sequences reported by each country. The arrows represent the direction of inferred  
 302 transmission events.  
 303

303

304 **Table 2. MPXV clade IIb subclades in GISAID from the 2022 outbreak.**

Subclades	Location						Cases
	Ireland	Europe	North America	South America	Asia	Oceania	
<b>IIb B.1</b>	60%	74%	60%	61%	33%	100%	<b>1874</b>
<b>IIb B.1.1</b>	3%	<b>7%</b>	4%	22%	11%		<b>217</b>
<b>IIb B.1.2</b>	5%	3%	12%	2%	22%		<b>195</b>
<b>IIb B.1.3</b>	6%	3%	4%		<b>26%</b>		<b>102</b>
<b>IIb B.1.5</b>	1%	3%	1%		4%		<b>56</b>
<b>IIb B.1.7</b>	16%	4%	5%	1%	4%		<b>137</b>
<b>IIb B.1.8</b>	1%	2%	3%				<b>51</b>
<b>IIb B.1.9</b>	1%	1%	0%	4%			<b>31</b>
<b>IIb B.1.10</b>	3%	1%	0%	8%			<b>50</b>
<b>IIb B.1.11</b>	1%	0%	5%	1%			<b>65</b>
<b>IIb B.1.12</b>	2%	1%	4%	1%			<b>50</b>
<b>IIb B.1.15</b>	1%	1%	0%	1%			<b>14</b>
<b>Cases</b>	<b>175</b>	<b>1253</b>	<b>1074</b>	<b>312</b>	<b>27</b>	<b>1</b>	

305



## 306 **Discussion**

307 The first detections of MPXV in Ireland was notified on May 31<sup>st</sup> 2022 with the earliest onset  
308 of symptoms on May 13<sup>th</sup>. The major peak of cases was in and August 2022 and declined  
309 significantly since this time. A similar observation has been shared in other jurisdictions  
310 where the numbers of cases have decreased significantly worldwide. The explanation for the  
311 decline in case numbers is likely multifactorial including effective public health  
312 communication regarding protective measures, the subsequent introduction of safe practices  
313 to mitigate against transmission in vulnerable groups. Parallel with this the introduction of  
314 targeted vaccination policy to protect those at most risk and the reduced mass gathering  
315 events in late 2022 (HSE, 2022; Yang et al., 2023). The smallpox vaccine was offered as  
316 MPXV prophylaxis and it has been suggested that the previous cessation of the smallpox  
317 vaccination around the world could have been one of the factors contributing to the  
318 emergence of the current outbreak (Bunge et al., 2022).

319 Since the 2022 outbreak in the ROI described here, there have been further sporadic  
320 cases (n=5) notified in December 2022, January 2023 and August 2023, and internationally a  
321 surge of cases in East Asia during July and August (Murphy, 2023). This indicates  
322 importation events are likely occurring with the potential for onward transmission. Such  
323 cases highlight the need for vigilance, early detection with timely genomic surveillance and  
324 rapid public sharing of sequences to monitor for potential amino acid substitutions and for  
325 MPXV clade changes over time on both national and international levels. The availability of  
326 the large genomic epidemiological baseline from 2022 described in this study will facilitate  
327 the delineation of transmission patterns and, specifically, the ability to distinguish imported  
328 from autochthonous transmission events as the priority must be to mitigate against further  
329 disease transmission by preventing the establishment of recalcitrant reservoirs arising from  
330 potential silent transmission, i.e. in asymptomatic cases (Mizushima et al., 2023), in different  
331 geographical regions which will seed further outbreaks.

332 Our results of MPXV genomic epidemiological analysis demonstrates multiple  
333 introductions of the virus to the ROI with evidence for continued divergence during 2022.  
334 Such results were consistent with the national published reports documenting that 50.9%  
335 (n=116/190) of cases were associated with a recent history of international travel in the 21  
336 days prior to symptom onset (HPSC, 2023). Our analyses also contextualised the Irish cases  
337 into the global genomic epidemiology of the unprecedented international MPXV 2022  
338 outbreak (Isidro et al., 2022), with the presence of subclades with higher prevalence in  
339 different continents suggested to be transmitted to cases in Ireland.

340 The dominant clade of circulating MPXV in Ireland was suggested to accumulate  
341 mutations at a rate that was at least an order of magnitude higher than previously reported  
342 (Babkin et al., 2022), which is in keeping with recent data from a number of other studies  
343 (Yadav et al., 2022; Luna et al., 2022). The Bayesian-inferred population model suggested an  
344 increase in the effective population size early on in the outbreak that gave origin to many of  
345 the different subclades, as a probable consequence of the extensive human-to-human  
346 transmission events and adaptation and modification by the human host immune response  
347 (Yang et al., 2023). Such results could explain the distinctive pattern of the increases in the  
348 number of accumulated mutations as the virus was replicating and being transmitted. The  
349 analysis of mutational patterns amongst our MPXV cases strongly supported the hypothesis  
350 that much of this divergence is driven by the effects of enzymes of the APOBEC cytosine  
351 deaminase family where C to T (or G to A on the lagging strand) mutations predominated  
352 (Isidro et al., 2022), as was also observed in the evolution of SARS-CoV-2 during the  
353 COVID-19 pandemic (Mourier et al., 2021). Therefore, while MPXV may still be considered  
354 a zoonotic infection (W.H.O., 2023), viral phylogenetic and Bayesian analysis of local and  
355 international transmission dynamics provide evidence in support of sustained adaptation of  
356 the virus to the human and a potential risk to public health by altered transmission (Yang et  
357 al., 2023; Luna et al., 2022)

358 The extremely high sequencing coverage in our study facilitated robust phylogenetic  
359 inferences to be drawn by reducing uncertainty as to the direction and dating of the  
360 transmission between cases. With lower national genomic surveillance, uncertainty increases  
361 and the number of possible transmission routes and epidemiological variables also grows  
362 exponentially. As a consequence, this limits the amount of information that can be drawn  
363 from the gathered data. The combination of epidemiological data with high sequencing  
364 coverage for a particular outbreak can lead to insights into the origins, the transmission  
365 dynamics and even susceptibility of different populations as was implemented during the  
366 COVID-19 pandemic in tracing the epidemiological dynamics of SARS-CoV-2 (Lucey et al.,  
367 2021; Hare et al., 2021).

368 In conclusion, through detailed phylogenetic analysis of MPXV cases, in the context  
369 of extremely high sequencing coverage by international comparison performed in the Irish  
370 population, we provide evidence for multiple introductions during the 2022 outbreak  
371 underscoring the possibility that importation events could recur here and elsewhere posing a  
372 continued threat to public health. This dataset provides an epidemiological baseline to  
373 monitor future MPXV importation events by analogy to that employed for other pathogen



374 genomics efforts including influenza, measles and polio. The surveillance of MPXV genetic  
375 diversity also enables the assessment of the effectiveness of interventions to contain epidemic  
376 threats and the rational development of target-specific prophylactic vaccines. Furthermore,  
377 with a better understanding of the nature of MPXV introductions into Ireland, and their  
378 subsequent transmission dynamics, evidence based public health interventions can be planned  
379 and implemented, and mathematical modelling of mpox epidemiology can inform  
380 vaccination policy.

381

### 382 **Acknowledgements**

383 We gratefully acknowledge all authors from reference laboratories who submitted genome  
384 sequences to public databases. This study was partially supported by AMED under the grant  
385 number JP223fa627005.

386

### 387 **Contributions**

388 **Gabriel Gonzalez:** data analysis and draft manuscript preparation; **Michael Carr:** genome  
389 sequencing and manuscript edition; **Tomás M. Kelleher:** genome sequencing; **Emer**  
390 **O’Byrne:** sample extraction, genome sequencing and manuscript edition; **Weronika Banka:**  
391 sample extraction, genome sequencing and manuscript edition; **Brian Keogan:** sample  
392 location and extraction, manuscript edition; **Charlene Bennett:** protocols validation;  
393 **Geraldine Franzoni:** protocols validation; **Patrice Keane:** genome sequencing and  
394 manuscript edition; **Luke W. Meredith:** genome sequencing protocol; **Nicola Fletcher:**  
395 genome sequencing and manuscript edition; **Jose Maria Urtasun-Elizari:** sequence analysis  
396 and manuscript preparation; **Jonathan Dean:** data collection and analysis, manuscript  
397 edition; **Brendan Crowley:** sample collection, results validation and manuscript edition;  
398 **Derval Igoe:** data evaluation and manuscript edition; **Eve Robinson:** data evaluation and  
399 manuscript edition; **Greg Martin:** data evaluation and manuscript edition; **Jeff Connell:**  
400 protocols validation; **Daniel Hare:** study oversight, manuscript preparation; **Cillian F. De**  
401 **Gascun:** study oversight, manuscript preparation. All authors reviewed the results and  
402 approved the final version of the manuscript.

403

404

## 405 **References**

- 406 Xiang, Y.; White, A. Monkeypox virus emerges from the shadow of its more infamous  
407 cousin: family biology matters. *Emerg Microbes Infect.* 2022 Dec;11(1):1768-1777.  
408 W.H.O. Mpox (monkeypox) - Fact sheet; [modified 18-04-2023; cited 2023 28-07-2023].  
409 Available from: <https://www.who.int/news-room/fact-sheets/detail/monkeypox>  
410 Saxena, S.K.; Ansari, S.; Maurya, V.K.; Kumar, S.; Jain, A.; Paweska, J.T.; Tripathi, A.K.;  
411 Abdel-Moneim, A.S. Re-emerging human monkeypox: A major public-health debacle. *J Med*  
412 *Viro.* 2023 Jan;95(1):e27902.  
413 Sun, Y.Q.; Chen, J.J.; Liu, M.C.; Zhang, Y.Y.; Wang, T.; Che, T.L.; Li, T.T.; Liu, Y.N.;  
414 Teng, A.Y.; Wu, B.Z.; Hong, X.G.; Xu, Q.; Lv, C.L.; Jiang, B.G.; Liu, W.; Fang, L.Q.  
415 Mapping global zoonotic niche and interregional transmission risk of monkeypox: a  
416 retrospective observational study. *Global Health.* 2023 Aug 17;19(1):58.  
417 Quarleri, J.; Delpino, M.V.; Galvan, V. Monkeypox: considerations for the understanding and  
418 containment of the current outbreak in non-endemic countries. *Geroscience.* 2022  
419 Aug;44(4):2095-2103.  
420 Gigante, C.M.; Korber, B.; Seabolt, M.H.; Wilkins, K.; Davidson, W.; Rao, A.K.; Zhao, H.;  
421 Smith, T.G.; Hughes, C.M.; Minhaj, F.; Waltenburg, M.A.; Theiler, J.; Smole, S.; Gallagher,  
422 G.R.; Blythe, D.; Myers, R.; Schulte, J.; Stringer, J.; Lee, P.; Mendoza, R.M.; Griffin-Thomas,  
423 L.A.; Crain, J.; Murray, J.; Atkinson, A.; Gonzalez, A.H.; Nash, J.; Batra, D.; Damon, I.;  
424 McQuiston, J.; Hutson, C.L.; McCollum, A.M.; Li, Y. Multiple lineages of monkeypox virus  
425 detected in the United States, 2021-2022. *Science.* 2022 Nov 4;378(6619):560-565.  
426 Bragazzi, N.L.; Kong, J.D.; Mahroum, N.; Tsigalou, C.; Khamisy-Farah, R.; Converti, M.;  
427 Wu, J. Epidemiological trends and clinical features of the ongoing monkeypox epidemic: A  
428 preliminary pooled data analysis and literature review. *J Med Virol.* 2023 Jan;95(1):e27931.  
429 Bunge, E.M.; Hoet, B.; Chen, L.; Lienert, F.; Weidenthaler, H.; Baer, L.R.; Steffen, R. The  
430 changing epidemiology of human monkeypox-A potential threat? A systematic review. *PLoS*  
431 *Negl Trop Dis.* 2022 Feb;16(2):e0010141.  
432 Americo, J.L.; Earl, P.L.; Moss, B. Virulence differences of mpox (monkeypox) virus clades  
433 I, IIa, and IIb.1 in a small animal model. *Proc Natl Acad Sci U S A.* 2023 Feb  
434 21;120(8):e2220415120.  
435 Reda, A.; Hemmeda, L.; Brakat, A.M.; Sah, R.; El-Qushayri, A.E. The clinical manifestations  
436 and severity of the 2022 monkeypox outbreak among 4080 patients. *Travel Med Infect Dis.*  
437 2022 Nov-Dec;50:102456.  
438 Borges, V.; Duque, M.P.; Martins, J.V.; Vasconcelos, P.; Ferreira, R.; Sobral, D.; Pelerito,  
439 A.; de Carvalho, I.L.; Nuncio, M.S.; Borrego, M.J.; Roemer, C.; Neher, R.A.; O'Driscoll, M.;  
440 Rocha, R.; Lopo, S.; Neves, R.; Palminha, P.; Coelho, L.; Nunes, A.; Isidro, J.; Pinto, M.;  
441 Santos, J.D.; Mixao, V.; Santos, D.; Duarte, S.; Vieira, L.; Martins, F.; Machado, J.;  
442 Verissimo, V.C.; Grau, B.; Peralta-Santos, A.; Neves, J.; Caldeira, M.; Pestana, M.;  
443 Fernandes, C.; Caria, J.; Pinto, R.; Povoas, D.; Maltez, F.; Sa, A.I.; Salvador, M.B.; Teofilo,  
444 E.; Rocha, M.; Moneti, V.; Duque, L.M.; FF, E.S.; Baptista, T.; Vasconcelos, J.; Casanova,  
445 S.; Mansinho, K.; Alves, J.V.; Alves, J.; Silva, A.; Alpalhao, M.; Brazao, C.; Sousa, D.;  
446 Filipe, P.; Pacheco, P.; Peruzzu, F.; de Jesus, R.P.; Ferreira, L.; Mendez, J.; Jordao, S.; Duarte,  
447 F.; Goncalves, M.J.; Pena, E.; Silva, C.N.; Guimaraes, A.R.; Tavares, M.; Freitas, G.;  
448 Cordeiro, R.; Gomes, J.P. Viral genetic clustering and transmission dynamics of the 2022  
449 mpox outbreak in Portugal. *Nat Med.* 2023 Sep 11.  
450 Wenham, C.; Eccleston-Turner, M. Monkeypox as a PHEIC: implications for global health  
451 governance. *Lancet.* 2022 Dec 17;400(10369):2169-2171.  
452 Li, Y.; Zhao, H.; Wilkins, K.; Hughes, C.; Damon, I.K. Real-time PCR assays for the specific  
453 detection of monkeypox virus West African and Congo Basin strain DNA. *J Virol Methods.*  
454 2010 Oct;169(1):223-227.

455 Schroeder, K.; Nitsche, A. Multicolour, multiplex real-time PCR assay for the detection of  
456 human-pathogenic poxviruses. *Mol Cell Probes*. 2010 Apr;24(2):110-113.

457 Matthijs Welkers; M. Jonges; Ouden, A.v.d. onkeypox virus whole genome sequencing using  
458 combination of NextGenPCR and Oxford Nanopore V.1; [cited 2023]. Available from:  
459 <https://www.protocols.io/private/974ACB78F83911EC998C0A58A9FEAC02>

460 Katoh, K.; Rozewicki, J.; Yamada, K.D. MAFFT online service: multiple sequence alignment,  
461 interactive sequence choice and visualization. *Brief Bioinform*. 2019 Jul 19;20(4):1160-1166.

462 Stamatakis, A. RAxML version 8: a tool for phylogenetic analysis and post-analysis of large  
463 phylogenies. *Bioinformatics*. 2014 May 1;30(9):1312-1313.

464 Bouckaert, R.; Vaughan, T.G.; Barido-Sottani, J.; Duchene, S.; Fourment, M.; Gavryushkina,  
465 A.; Heled, J.; Jones, G.; Kuhnert, D.; De Maio, N.; Matschiner, M.; Mendes, F.K.; Muller,  
466 N.F.; Ogilvie, H.A.; du Plessis, L.; Poppinga, A.; Rambaut, A.; Rasmussen, D.; Siveroni, I.;  
467 Suchard, M.A.; Wu, C.H.; Xie, D.; Zhang, C.; Stadler, T.; Drummond, A.J. BEAST 2.5: An  
468 advanced software platform for Bayesian evolutionary analysis. *PLoS Comput Biol*. 2019  
469 Apr;15(4):e1006650.

470 Edler, D.; Klein, J.; Antonelli, A.; Silvestro, D. raxmlGUI 2.0: A graphical interface and  
471 toolkit for phylogenetic analyses using RAxML. *Methods in Ecology and Evolution*.  
472 2021;12(2):373-377.

473 Douglas, J.; Zhang, R.; Bouckaert, R. Adaptive dating and fast proposals: Revisiting the  
474 phylogenetic relaxed clock model. *PLoS Comput Biol*. 2021 Feb;17(2):e1008322.

475 Campbell, F.; Didelot, X.; Fitzjohn, R.; Ferguson, N.; Cori, A.; Jombart, T. outbreaker2: a  
476 modular platform for outbreak reconstruction. *BMC Bioinformatics*. 2018 Oct 22;19(Suppl  
477 11):363.

478 HPSC. Epidemiological characteristics of confirmed mpox cases in Ireland; May 2022 to  
479 February 2023 Republic of Ireland: HPSC; [modified April 2023; cited 2023 28-07-2023].  
480 Available from:  
481 [https://ndsc.newsweaver.ie/4otaa688p3/18ojfxozmu1?lang=en&a=1&p=62869572&t=31302](https://ndsc.newsweaver.ie/4otaa688p3/18ojfxozmu1?lang=en&a=1&p=62869572&t=31302978)  
482 [978](https://ndsc.newsweaver.ie/4otaa688p3/18ojfxozmu1?lang=en&a=1&p=62869572&t=31302978)

483 Babkin, I.V.; Babkina, I.N.; Tikunova, N.V. An Update of Orthopoxvirus Molecular  
484 Evolution. *Viruses*. 2022 Feb 14;14(2).

485 HSE. Update on HSE monkeypox vaccination programme; [cited 2023 2023-08-15].  
486 Available from: [https://www.hse.ie/eng/services/news/media/pressrel/update-on-hse-](https://www.hse.ie/eng/services/news/media/pressrel/update-on-hse-monkeypox-vaccination-programme.html)  
487 [monkeypox-vaccination-programme.html](https://www.hse.ie/eng/services/news/media/pressrel/update-on-hse-monkeypox-vaccination-programme.html)

488 Yang, S.; Guo, X.; Zhao, Z.; Abudunaibi, B.; Zhao, Y.; Rui, J.; Wang, Y.; Song, W.; Wei, H.;  
489 Chen, T. Possibility of mpox viral transmission and control from high-risk to the general  
490 population: a modeling study. *BMC Infect Dis*. 2023 Feb 24;23(1):119.

491 Murphy, F. Mpox: China's health authorities fight surge in cases of unknown origin. *BMJ*.  
492 2023 Aug 22;382:1939.

493 Mizushima, D.; Shintani, Y.; Takano, M.; Shiojiri, D.; Ando, N.; Aoki, T.; Watanabe, K.;  
494 Nakamoto, T.; Gatanaga, H.; Oka, S. Prevalence of Asymptomatic Mpox among Men Who  
495 Have Sex with Men, Japan, January-March 2023. *Emerging Infectious Diseases*. 2023;29(9).

496 Isidro, J.; Borges, V.; Pinto, M.; Sobral, D.; Santos, J.D.; Nunes, A.; Mixao, V.; Ferreira, R.;  
497 Santos, D.; Duarte, S.; Vieira, L.; Borrego, M.J.; Nuncio, S.; de Carvalho, I.L.; Pelerito, A.;  
498 Cordeiro, R.; Gomes, J.P. Phylogenomic characterization and signs of microevolution in the  
499 2022 multi-country outbreak of monkeypox virus. *Nat Med*. 2022 Aug;28(8):1569-1572.

500 Yadav, P.; Devasurmurt, Y.; Tatu, U. Phylogenomic and Structural Analysis of the  
501 Monkeypox Virus Shows Evolution towards Increased Stability. *Viruses*. 2022 Dec 31;15(1).

502 Luna, N.; Ramirez, A.L.; Munoz, M.; Ballesteros, N.; Patino, L.H.; Castaneda, S.A.; Bonilla-  
503 Aldana, D.K.; Paniz-Mondolfi, A.; Ramirez, J.D. Phylogenomic analysis of the monkeypox

504 virus (MPXV) 2022 outbreak: Emergence of a novel viral lineage? *Travel Med Infect Dis.*  
505 2022 Sep-Oct;49:102402.  
506 Mourier, T.; Sadykov, M.; Carr, M.J.; Gonzalez, G.; Hall, W.W.; Pain, A. Host-directed  
507 editing of the SARS-CoV-2 genome. *Biochem Biophys Res Commun.* 2021 Jan 29;538:35-  
508 39.  
509 Lucey, M.; Macori, G.; Mullane, N.; Sutton-Fitzpatrick, U.; Gonzalez, G.; Coughlan, S.;  
510 Purcell, A.; Fenelon, L.; Fanning, S.; Schaffer, K. Whole-genome Sequencing to Track  
511 Severe Acute Respiratory Syndrome Coronavirus 2 (SARS-CoV-2) Transmission in  
512 Nosocomial Outbreaks. *Clin Infect Dis.* 2021 Jun 1;72(11):e727-e735.  
513 Hare, D.; Gonzalez, G.; Dean, J.; McDonnell, K.; Carr, M.J.; De Gascun, C.F. Genomic  
514 epidemiological analysis of SARS-CoV-2 household transmission. *Access Microbiol.*  
515 2021;3(7):000252.

516