

Title: Cardiovascular Outcomes of Alpha-Blockers Versus 5-Alpha Reductase Inhibitors Among Patients with Benign Prostatic Hyperplasia

Authors: Jiandong Zhang^{1*#}, Chase Doyne Latour^{2*}, Oluwasolape Olawore², Virginia Pate², David F. Friedlander, Til Stürmer^{2,4}, Michele Jonsson Funk², Brian C. Jensen^{1#}

*These authors contributed equally to this work.

Affiliation:

¹ UNC Division of Cardiology, UNC Department of Pharmacology, UNC McAllister Heart Institute (if space permits)

² Department of Epidemiology, Gillings School of Global Public Health, University of North Carolina at Chapel Hill, Chapel Hill, NC, USA

³ Department of Urology, University of North Carolina, Chapel Hill, NC, USA

⁴ Lineberger Comprehensive Cancer Center, University of North Carolina at Chapel Hill, Chapel Hill, NC, USA

Article Type: [Brief Report](#)

(1197 words, 15 references, 1 figure, 2 tables)

#Co-Corresponding Author:

Jiandong Zhang M.D. & Ph.D.

UNC Division of Cardiology
UNC McAllister Heart Institute
160 Dental Circle, CB 7075
Chapel Hill, NC 27599-7075
Email: jdzhang@email.unc.edu
Tel:919-966-5201

Brian C. Jensen M.D.

UNC Division of Cardiology
UNC McAllister Heart Institute

160 Dental Circle, CB 7075
Chapel Hill, NC 27599-7075

Email: brian_jensen@med.unc.edu

Tel:919-966-5201

Conflicts of Interest:

CDL has received funding from Target RWE and Amgen, Inc. for unrelated studies. TS receives salary support as Director of Comparative Effectiveness Research (CER), NC TraCS Institute, UNC Clinical and Translational Science Award (UL1TR002489), the Center for Pharmacoepidemiology (current members: GlaxoSmithKline, UCB BioSciences, Takeda, AbbVie, Boehringer Ingelheim), from pharmaceutical companies (Novo Nordisk), and from a generous contribution from Dr. Nancy A. Dreyer to the Department of Epidemiology, University of North Carolina at Chapel Hill. Dr. Stürmer does not accept personal compensation of any kind from any pharmaceutical company. He owns stock in Novartis, Roche, and Novo Nordisk. BCJ is an inventor on patent US 11,213,514 “Alpha-1-adrenergic receptor agonist therapy.” Abbvie, Astellas, Boehringer Ingelheim, GlaxoSmithKline (GSK), Takeda, Sarepta, and UCB Bioscience have collaborative agreements with the Center for Pharmacoepidemiology housed in the Department of Epidemiology which provides salary support to MJF. MJF is a member of the Scientific Steering Committee (SSC) of a post-approval safety study of an unrelated drug class funded by GSK. All compensation for services provided on the SSC is invoiced by and paid to UNC Chapel Hill. MJF is a member of the Epidemiology and Clinical Advisory Board for EpiVidian. JZ, OO, VP, and DFF have no potential conflicts of interest to report.

Funding:

This research was partially supported by a National Research Service Award Pre-Doctoral/Post-Doctoral Traineeship from the Agency for Healthcare Research and Quality sponsored by The Cecil G. Sheps Center for Health Services Research, The University of North Carolina at Chapel Hill, Grant No. T32-HS000032 (CDL). TS receives investigator-initiated research funding and support as Principal Investigator (R01AG056479) from the National Institute on Aging (NIA), and as Co-Investigator (R01CA174453, R01HL118255, R01MD011680), National Institutes of Health (NIH). BCJ receives funding as Principal Investigator (2R01HL140067) and as Co-investigator (R01HL161456, R01HL148432, R01HL146701) from the National Institutes of Health.

Data Sharing Statement

These data are not publicly available but can be obtained from the Centers for Medicare and Medicaid Services through an appropriate data use agreement and sufficient funds to cover the cost of the data access. SAS code files are posted in a public repository on GitHub (<https://github.com/chasedlatour/AB-v-5ARI-Medicare>).

Abstract:

Importance: Alpha-blockers (AB) are widely prescribed for treatment of benign prostatic hyperplasia (BPH). However, the cardiovascular safety profile of these medications among patients with BPH is not well understood.

Objective: To compare the safety of ABs versus 5-alpha reductase inhibitors (5ARIs) for risk of adverse cardiovascular outcomes.

Design: We conducted an active comparator, new user, cohort study using insurance claims data from 2007-2019.

Setting: This study used data from a 20% random sample of Medicare (U.S.) beneficiaries.

Participants: Men between 66 and 90 years of age were indexed into the cohort at new use of an AB or 5ARI. We required 12 months of continuous enrollment and ≥ 1 diagnosis code for BPH within 12 months prior to initiation.

Exposures: Exposure was defined by a qualifying prescription fill for either an AB or 5ARI after at least 12 months without a prescription for these drug classes.

Main Outcomes and Measures: Follow-up began at a qualified refill for the study drug. The primary study outcomes were (1) hospitalization for heart failure (HF); (2) composite major adverse cardiovascular events (MACE) (hospitalization for stroke, myocardial infarction, or death); (3) composite MACE or hospitalization for HF; and (4) death. We estimated inverse probability of treatment and censoring weighted 1-year risks, risk ratios (RRs), and risk differences (RDs) for each outcome.

Results: We identified 163,846 and 26,040 initiators of ABs and 5ARIs, respectively. In our fully adjusted analyses, we found ABs, compared to 5ARIs, were associated with an increased 1-year risk of MACE (RR=1.08 [1.02, 1.13], RD=6.26 per 1,000 [2.15, 10.37]), composite MACE

and HF (RR=1.07 [1.03, 1.12], RD=7.40 per 1,000 [2.88, 11.93]), and death (RR=1.07 [1.01, 1.14], RD=3.85 per 1,000 [0.40, 7.29]). We did not find a difference in risk for HF alone (RR=0.99 [0.92, 1.07], RD=-2.33 per 10,000 [-31.97, 27.31]).

Conclusions and Relevance: These results provide real-world evidence that ABs may be associated with an increased risk of adverse cardiovascular outcomes, though residual confounding may explain these findings. If replicated with detailed confounder data, these results could have important public health implications given the widespread use of these medications.

Three Key Points:

Question: What is the comparative risk of alpha-blockers versus 5-alpha reductase inhibitors for adverse cardiovascular outcomes among patients with benign prostatic hyperplasia?

Findings: We found that use of alpha-blockers was associated with a small increase in risk for multiple adverse cardiovascular outcomes compared to 5-alpha reductase inhibitors, among patients with benign prostatic hyperplasia. These results could be explained by unmeasured variables (e.g., blood pressure or body mass index).

Meaning: First-line use of alpha-blockers for BPH may result in a small increase in risk of adverse cardiovascular outcomes including death. Widescale use of alpha-blockers (>5 million prescriptions/year) could amplify this risk.

Introduction:

Cardiovascular diseases (CVD) and benign prostatic hyperplasia (BPH) are common conditions with shared risk factors among older men.¹ Alpha-1 blockers (ABs), particularly selective antagonists of the alpha-1A adrenergic receptor subtype, are the most commonly prescribed class of medications for BPH.² Interestingly, the alpha-1A adrenergic receptor subtype is expressed in both prostate and cardiovascular tissues. Preclinical studies have demonstrated that the alpha-1A adrenergic receptor subtype confers cardioprotective effects.^{3,4} However, previous investigations of the cardiac safety profile of ABs among patients with BPH have produced conflicting results.^{3,5}

Recently, we found that use of ABs, compared with no AB use, was associated with increased mortality among patients undergoing percutaneous coronary intervention (PCI) for myocardial infarction (MI).⁶ This finding highlights the need to investigate AB safety in real-world data. In this study, we hypothesized that ABs would be associated with increased cardiovascular risks among patients with BPH compared to 5-alpha-reductase inhibitors (5ARIs), the second most prescribed medication class for BPH.²

Methods:

This study used insurance claims data from a 20% random sample of Medicare beneficiaries in the U.S. from 2007-2019 from the Centers for Medicare and Medicaid Services. Analyses were approved by the UNC's Institutional Review Board.

We used an active comparator, new user design to compare new users of ABs versus 5ARIs for risk of adverse outcomes.⁷ We constructed a retrospective cohort of men who were 66-90 years of age at new use. We required continuous enrollment in fee-for-service Medicare plans A, B, and D for ≥ 12 months (allowed 45-day gap) and ≥ 1 diagnosis code for BPH ≤ 12

months prior to this first prescription fill. We applied comorbidity-related exclusion criteria (**Methods S1**). Treatment with ABs (subtype selective and non-selective) and 5ARIs was identified using prescription claims (**Supplement1**). We defined new users as individuals without recorded use of either drug ≤ 12 months prior to initiation and required a refill (allowed 30-day gap). We excluded individuals who filled a prescription for the other drug class or experienced an outcome before the second fill (**Figure S1**).

Our primary outcomes were (1) hospitalization for heart failure (HF); (2) composite major adverse cardiovascular events (MACE) (hospitalization for stroke, MI, or death); (3) composite MACE or in-patient hospitalization for HF; and (4) death. Secondary outcomes were (1) PCI and (2) coronary artery bypass graft surgery (CABG) (**Figures S2-S4**). Confounders are described in **Methods S2 (Figure S5, Table S1)**.

We conducted an intention-to-treat (ITT) analysis. We estimated cumulative incidence, risk ratios (RRs), and risk differences (RDs) from the second prescription fill through 1-year of follow-up, using Kaplan-Meier and Aalen-Johansen (HF, revascularization) estimators. Point estimates and confidence intervals were calculated using non-parametric bootstrapping (**Methods S3**); cumulative incidence curves were plotted without bootstrapping. We addressed confounding and censoring using stabilized inverse probability of treatment and censoring weights (IPTW, IPCW)^{8,9} (**Table S1**). **Table S2** describes multiple sensitivity analyses.

Results:

We identified 163,846 and 26,040 initiators of ABs and 5ARIs, respectively (**Table 1, Figure S6**). Tamsulosin was most used (**Figure S7, Table S3**). Treatment discontinuation, switching, and/or augmentation was common (>60%) by 1 year (**Figure S8, Table S4**). Initiators of ABs, compared to 5ARIs, were demographically similar in the unweighted cohort. However,

AB initiators had modestly higher prevalence of some CVD risk factors (e.g., prior HF hospitalization: 7.4% vs. 5.5%) whereas 5ARI initiators were older (**Table 1**). Patients were well-balanced on measured covariates after IPTW (**Figures S9 and S10, Table S5**).

The fully adjusted RR and RD (ABs versus 5ARIs) for hospitalization for HF was 0.99 (95% CI: 0.92, 1.07) and -2.33 per 10,000 (95% CI: -31.97, 27.31), respectively (**Figure 1; Table 2**). For MACE, the RR and RD were 1.08 (1.02, 1.13) and 6.26 per 1,000 (95% CI: 2.15, 10.37), respectively. For composite MACE or HF hospitalization, the RR was 1.07 (95% CI: 1.03, 1.12), and the RD was 7.40 per 1,000 (95% CI: 2.88, 11.93). Finally, for mortality, RR and RD estimates were 1.07 (95% CI: 1.01, 1.14) and 3.85 per 1,000 (95% CI: 0.40, 7.29), respectively. Results were similar for secondary outcomes (PCI: RR=1.18 [95% CI: 1.01, 1.38], RD=1.57 per 1,000 [95% CI: 0.15, 2.99]; CABG: RR=1.06 [95% CI: 0.86, 1.31], RD=2.57 per 10,000 [95% CI: -6.98, 12.11]). Results were consistent across sensitivity analyses (**Tables S6-S12, Figure S11**).

Discussion

This study of Medicare beneficiaries with BPH found that initiation of ABs, compared to 5ARIs, was associated with a small but significant increased risk of death, MACE, composite MACE and HF, and revascularization procedures. We did not find an increased risk of hospitalization for HF alone.

To our knowledge, this is the largest study of cardiovascular risk associated with ABs versus 5ARIs among patients with BPH and the first to find AB use associated with higher risk of mortality and MACE. In the landmark ALLHAT trial of antihypertensives, the non-selective AB treatment arm (doxazosin) was terminated early due to increased risk of adverse cardiac events, most notably HF¹⁰. Our study provides important evidence for contemporary practice.

ABs are now used almost exclusively to treat BPH rather than hypertension⁵. We found very similar results when we limited to subtype selective ABs in sensitivity analyses (**Table S7**), unsurprising given that 86% of ABs prescribed in our study were selective.

Our study found a similar risk of HF hospitalization between AB and 5ARI initiators. This finding appears to contrast with ALLHAT and a 2021 study by Lusty et al., that reported a RR of 1.10 for HF among users of ABs compared to 5ARIs.¹¹ However, that study focused on newdiagnoses of HF, whereas we studied hospitalization due to HF. Additionally, Lusty et al. indexed patients into their study at BPH diagnosis, inducing potential selection bias compared to our approach.^{7,12} Our results further contrast with Sousa et al. who found that ABs increased risk of acute HF in randomized trials among patients with indications for ABs (OR=1.78 [95% CI [1.46-2.16)]), but they found no effect on mortality (OR=1.10 [95% CI: 0.84, 1.42]).¹³

This study has important strengths. We conducted prespecified analyses, employing rigorous methodology including a new user, active comparator design with an ITT analysis, IPTW, and ICPW. Further, our choice of active comparator is clinically relevant: both ABs and 5ARIs are first-line treatments for BPH, but adverse cardiac outcomes are only hypothesized with ABs.³

Importantly, unmeasured or poorly measured variables (e.g., blood pressure, body mass index) may introduce residual confounding in our analysis.¹⁴ However, even a small effect of ABs versus 5ARIs on cardiovascular outcomes would have important implications for public health because ABs are prescribed widely (demonstrated here). Per our RD estimate, for every 135 (95% CI: 84, 347) individuals with BPH treated with ABs over 5ARIs, we would expect 1 additional MACE or hospitalization for HF (i.e., number needed to harm) within 1 year after initiation. For perspective, 86% (163,836 individuals) of our 20% Medicare sample was

prescribed ABs instead of 5ARIs (i.e., 1214 additional events) and >5 million people filled a prescription for tamsulosin alone in the U.S in 2020.¹⁵

Conclusions

We found new prescription of ABs, associated with a slightly higher risk of all-cause mortality and MACE, compared to 5ARIs, among patients with BPH, though residual confounding by unmeasured variables may explain these results. Further investigation with detailed clinical data on strong risk factors for CVD is warranted.

References

1. Awedew AF, Han H, Abbasi B, et al. The global, regional, and national burden of benign prostatic hyperplasia in 204 countries and territories from 2000 to 2019: a systematic analysis for the Global Burden of Disease Study 2019. *Lancet Healthy Longev.* 2022;3(11):e754-e776. doi:10.1016/S2666-7568(22)00213-6
2. Beduschi MC, Beduschi R, Oesterling JE. Alpha-blockade therapy for benign prostatic hyperplasia: From a nonselective to a more selective alpha1A-adrenergic antagonist. *Urology.* 1998;51(6):861-872. doi:10.1016/S0090-4295(98)00140-X
3. Zhang J, Simpson PC, Jensen BC. Cardiac α 1A-adrenergic receptors: Emerging protective roles in cardiovascular diseases. *Am J Physiol Heart Circ Physiol.* 2021;320(2):H725-H733. doi:10.1152/AJPHEART.00621.2020
4. Schwinn DA, Roehrborn CG. α 1-Adrenoceptor subtypes and lower urinary tract symptoms. *International Journal of Urology.* 2008;15(3):193-199. doi:10.1111/j.1442-2042.2007.01956.x
5. Nickel JC, Sander S, Moon TD. A meta-analysis of the vascular-related safety profile and efficacy of α -adrenergic blockers for symptoms related to benign prostatic hyperplasia. *Int J Clin Pract.* 2008;62(10):1547-1559. doi:10.1111/j.1742-1241.2008.01880.x
6. Zhang J, Yang H, Ortiz F, et al. ALPHA-BLOCKER USE AND CLINICAL OUTCOMES FOLLOWING PERCUTANEOUS CORONARY INTERVENTION. *J Am Coll Cardiol.* 2021;77(18_Supplement_1):135. doi:10.1016/S0735-1097(21)01494-7
7. Lund JL, Richardson DB, Stürmer T. The Active Comparator, New User Study Design in Pharmacoepidemiology: Historical Foundations and Contemporary Application. *Curr Epidemiol Rep.* 2015;2(4):221-228. doi:10.1007/s40471-015-0053-5
8. Brookhart MA, Wyss R, Layton JB, Stürmer T. Propensity Score Methods for Confounding Control in Non-Experimental Research. *Circ Cardiovasc Qual Outcomes.* 2013;6(5):604-611. doi:10.1161/CIRCOUTCOMES.113.000359
9. Howe CJ, Cole SR, Lau B, Napravnik S, Eron JJ. Selection Bias Due to Loss to Follow Up in Cohort Studies. *Epidemiology.* 2016;27(1):91-97. doi:10.1097/EDE.0000000000000409
10. The ALLHAT Officers and Coordinators for the ALLHAT Collaborative Research Group. Major Outcomes in High-Risk Hypertensive Patients Randomized to Angiotensin-Converting Enzyme Inhibitor or Calcium Channel Blocker vs Diuretic: The Antihypertensive and Lipid-Lowering Treatment to Prevent Heart Attack Trial (ALLHAT). *JAMA.* 2002;288(23):2981-2997. doi:10.1001/jama.288.23.2981
11. Lusty A, Siemens DR, Tohidi M, Whitehead M, Tranmer J, Nickel JC. Cardiac Failure Associated with Medical Therapy of Benign Prostatic Hyperplasia: A Population Based Study. *J Urol.* 2021;205(5):1430-1437. doi:10.1097/JU.0000000000001561
12. Suissa S, Dell'Aniello S. Time-related biases in pharmacoepidemiology. *Pharmacoepidemiol Drug Saf.* 2020;29(9):1101-1110. doi:10.1002/pds.5083

13. Sousa JP, Mendonça D, Teixeira R, Gonçalves L. Do adrenergic alpha-antagonists increase the risk of poor cardiovascular outcomes? A systematic review and meta-analysis. *ESC Heart Fail.* 2022;9(5):2823-2839. doi:10.1002/ehf2.14012
14. Jackevicius CA, Ghaznavi Z, Lu L, Warner AL. Safety of Alpha-Adrenergic Receptor Antagonists in Heart Failure. *JACC Heart Fail.* 2018;6(11):917-925. doi:10.1016/j.jchf.2018.06.015
15. Agency for Healthcare Research and Quality. Medical Expenditure Panel Survey (MEPS) Household Component (HC). Published 2020. Accessed May 11, 2023. <https://datatools.ahrq.gov/meps-hc?type=tab&tab=mepshcpd>

Figure Titles

Figure 1. Cumulative incidence curves for primary outcomes: (a) hospitalization for heart failure (HF), (b) major adverse cardiovascular events (MACE) outcomes, (c) composite MACE or hospitalization for HF, and (d) all-cause mortality.

Tables

Table 1. Distribution of covariates at treatment initiation in the primary cohort after trimming non-overlapping regions of the propensity score distributions across the two treatment groups. Results are presented before and after applying inverse probability of treatment weights (IPTW).

Covariate	Unweighted Cohort			IPTW Cohort		
	α -Blocker Initiators	5 α -Reductase Inhibitor Initiators	SMD	α -Blocker Initiators	5 α -Reductase Inhibitor Initiators	SMD
	(N = 163,829)	(N = 26,039)		(N = 163,840)	(N = 26,009)	
Years of Age, Median (IQR)	73.0 (69.0-79.0)	74.0 (70.0-80.0)	0.117	74.0 (69.0-79.0)	74.0 (69.0-79.0)	0.016
Calendar Year, Median (IQR)	2014.0 (2011.0-2017.0)	2013.0 (2010.0-2016.0)	0.344	2014.0 (2011.0-2017.0)	2014.0 (2011.0-2017.0)	0.004
Race/Ethnicity ^a			0.072			0.041
Unknown	2,189 (1.3%)	286 (1.1%)		2,135 (1.3%)	334 (1.3%)	
Non-Hispanic, White	133,510 (81.5%)	21,605 (83.0%)		133,835 (81.7%)	21,119 (81.2%)	
Black or African American	9,179 (5.6%)	1,339 (5.1%)		9,087 (5.5%)	1,501 (5.8%)	
Other Asian/Pacific Islander	1,872 (1.1%)	250 (1.0%)		1,831 (1.1%)	296 (1.1%)	
Hispanic American Indian/Alaska Native	5,890 (3.6%)	827 (3.2%)		5,799 (3.5%)	945 (3.6%)	
	10,610 (6.5%)	1,656 (6.4%)		10,586 (6.5%)	1,714 (6.6%)	
Acute Urinary Retention	36,514 (22.3%)	4,574 (17.6%)	0.118	35,447 (21.6%)	5,604 (21.5%)	0.002
Coronary Heart Disease	67,225 (41.0%)	10,443 (40.1%)	0.019	67,033 (40.9%)	10,700 (41.1%)	0.005

Hospitalization due to Heart Failure	12,051 (7.4%)	1,439 (5.5%)	0.075	11,651 (7.1%)	1,910 (7.3%)	0.009
Chronic Kidney Disease	48,123 (29.4%)	6,208 (23.8%)	0.125	46,894 (28.6%)	7,523 (28.9%)	0.007
COPD	39,662 (24.2%)	5,385 (20.7%)	0.085	38,883 (23.7%)	6,232 (24.0%)	0.005
Hypercholesterolemia	81,013 (49.4%)	14,971 (57.5%)	0.162	82,833 (50.6%)	13,162 (50.6%)	0.001
Hospitalization due to MI	3,339 (2.0%)	427 (1.6%)	0.030	3,254 (2.0%)	535 (2.1%)	0.005
Hospitalization due to Stroke	5,595 (3.4%)	612 (2.4%)	0.064	5,360 (3.3%)	882 (3.4%)	0.007
Percutaneous Coronary Intervention	2,817 (1.7%)	437 (1.7%)	0.003	2,812 (1.7%)	466 (1.8%)	0.006
Coronary Artery Bypass Surgery	1,664 (1.0%)	152 (0.6%)	0.049	1,566 (1.0%)	245 (0.9%)	0.001
Tobacco Use	30,344 (18.5%)	3,671 (14.1%)	0.120	29,353 (17.9%)	4,656 (17.9%)	0.000
ACE Inhibitor, Any Use	61,533 (37.6%)	9,258 (35.6%)	0.042	61,084 (37.3%)	9,691 (37.3%)	0.000
ARB, Any Use	33,951 (20.7%)	5,072 (19.5%)	0.031	33,674 (20.6%)	5,376 (20.7%)	0.003
Beta-Blocker, Any Use	74,043 (45.2%)	10,993 (42.2%)	0.060	73,379 (44.8%)	11,664 (44.8%)	0.001
Peripheral Vasodilators, Any Use	3,029 (1.8%)	609 (2.3%)	0.034	3,142 (1.9%)	511 (2.0%)	0.003
Calcium Channel Blocker, Any use	49,928 (30.5%)	6,877 (26.4%)	0.090	49,018 (29.9%)	7,780 (29.9%)	0.000
Thiazide Diuretics, Any Use	34,827 (21.3%)	5,250 (20.2%)	0.027	34,580 (21.1%)	5,431 (20.9%)	0.006
Combination Diuretics, Any Use	18,052 (11.0%)	2,920 (11.2%)	0.006	18,093 (11.0%)	2,837 (10.9%)	0.004
Potassium Sparing Diuretic, Any Use	9,191 (5.6%)	1,391 (5.3%)	0.012	9,137 (5.6%)	1,473 (5.7%)	0.004
Loop Diuretic, Any Use	25,547 (15.6%)	3,593 (13.8%)	0.051	25,162 (15.4%)	4,070 (15.6%)	0.008
Other Diuretics, Any Use	3,517 (2.1%)	453 (1.7%)	0.029	3,424 (2.1%)	544 (2.1%)	0.000
Anticoagulant Use			0.086			0.000
No Fill	141,194 (86.2%)	22,111 (84.9%)		140,905 (86.0%)	22,329 (85.9%)	
1 Fill	4,223 (2.6%)	532 (2.0%)		4,104 (2.5%)	652 (2.5%)	
≥2 Fills	18,412 (11.2%)	3,396 (13.0%)		18,831 (11.5%)	3,027 (11.6%)	
Opioid Use			0.158			0.000
No Fill	97,222 (59.3%)	17,178 (66.0%)		98,722 (60.3%)	15,672 (60.3%)	
1 Fill	26,625	3,958		26,384	4,172	

	(16.3%)	(15.2%)		(16.1%)	(16.0%)	
≥2 Fills	39,982 (24.4%)	4,903 (18.8%)		38,734 (23.6%)	6,165 (23.7%)	
Nicotine or Varenicline, Any Use	758 (0.5%)	106 (0.4%)	0.008	746 (0.5%)	121 (0.5%)	0.001
Statin, Any Use	96,595 (59.0%)	14,652 (56.3%)	0.054	95,986 (58.6%)	15,193 (58.4%)	0.003
Diabetes	54,347 (33.2%)	7,530 (28.9%)	0.092	53,401 (32.6%)	8,536 (32.8%)	0.005
DPP-4i	6,876 (4.2%)	840 (3.2%)	0.051	6,656 (4.1%)	1,051 (4.0%)	0.001
GLP-1	1,626 (1.0%)	164 (0.6%)	0.040	1,545 (0.9%)	251 (1.0%)	0.002
Long-Acting Insulin			0.092			0.000
No Fill	151,982 (92.8%)	24,626 (94.6%)		152,394 (93.0%)	24,158 (92.9%)	
1 Fill	1,666 (1.0%)	183 (0.7%)		1,596 (1.0%)	252 (1.0%)	
≥2 Fills	10,181 (6.2%)	1,230 (4.7%)		9,850 (6.0%)	1,599 (6.1%)	
Short-Acting Insulin			0.064			0.000
No Fill	157,738 (96.3%)	25,320 (97.2%)		157,961 (96.4%)	25,048 (96.3%)	
1 Fill	1,713 (1.0%)	186 (0.7%)		1,639 (1.0%)	263 (1.0%)	
≥2 Fills	4,378 (2.7%)	533 (2.0%)		4,240 (2.6%)	697 (2.7%)	
SGLT-2i, Any Fill	1,144 (0.7%)	108 (0.4%)	0.038	1,080 (0.7%)	175 (0.7%)	0.002
Sulfonylureas, Any Fill	18,053 (11.0%)	2,366 (9.1%)	0.064	17,619 (10.8%)	2,793 (10.7%)	0.000
TZD, Any Fill	4,952 (3.0%)	784 (3.0%)	0.001	4,949 (3.0%)	789 (3.0%)	0.001
Atherosclerosis or Peripheral Vascular Disease	45,604 (27.8%)	8,020 (30.8%)	0.065	46,286 (28.3%)	7,414 (28.5%)	0.006
Obesity	18,951 (11.6%)	1,941 (7.5%)	0.141	18,029 (11.0%)	2,897 (11.1%)	0.004

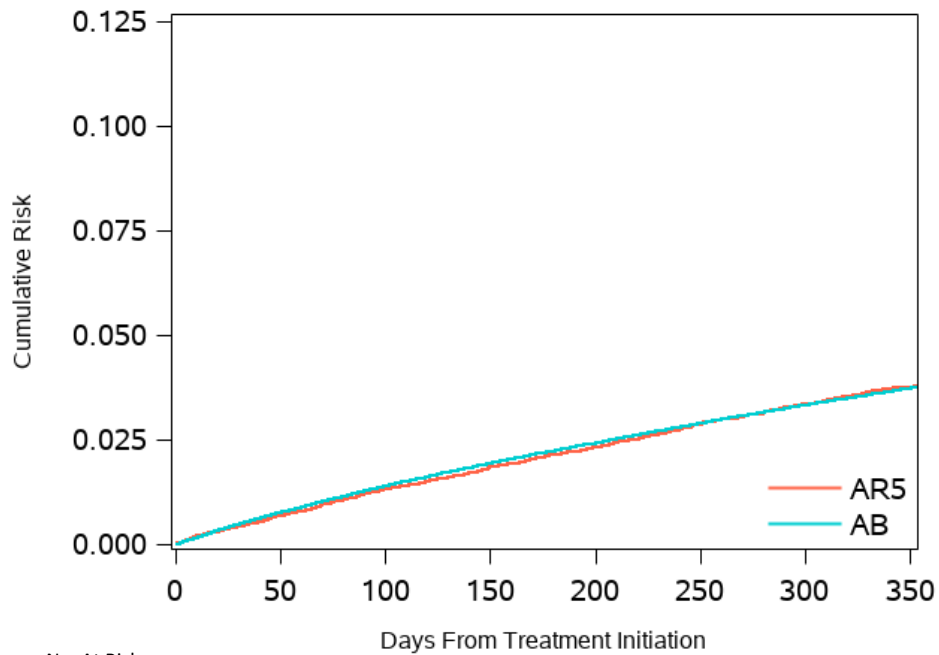
SMD = Absolute standardized mean difference; IQR = Inter-quartile range.

Patients who experienced a heart failure or major adverse cardiovascular event between their first and second prescription fill are included.

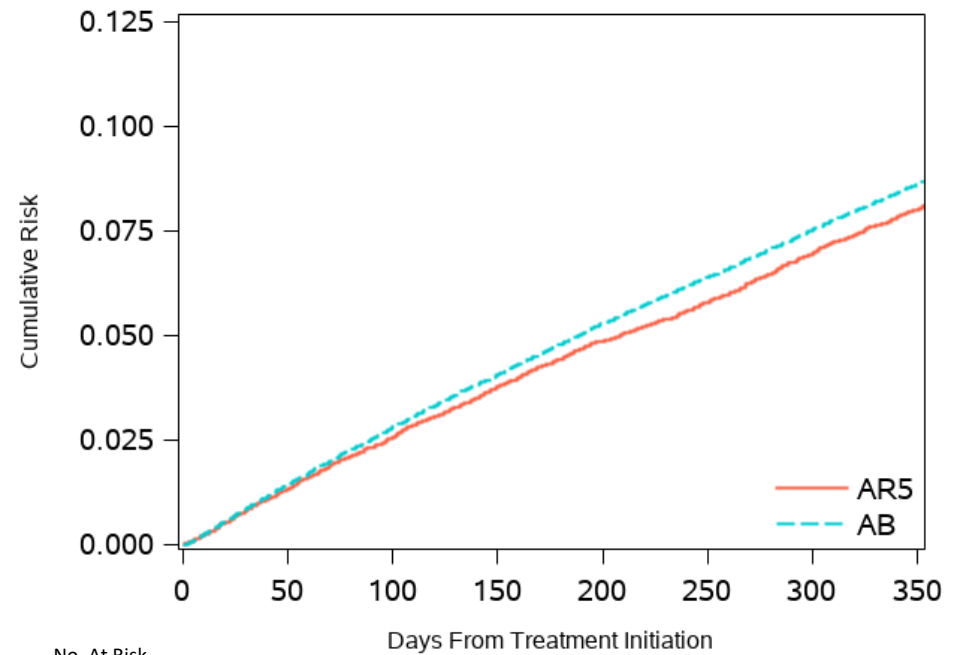
Table 2. Treatment effect estimates for the primary and secondary outcomes, among the primary study population after trimming non-overlapping regions of the propensity score distributions, comparing initiators of α -Blockers versus 5 α -reductase inhibitors. Results are presented with and without inverse probability of treatment weighting (IPTW).

Study Outcome	Non-IPTW Estimates				IPTW Estimates			
	Risk Among α -Blocker Initiators % (95% CI)	Risk Among 5 α -Reductase Inhibitor Initiators % (95% CI)	Risk Difference (95% CI)	Risk Ratio (95% CI)	Risk Among α -Blocker Initiators	Risk Among 5 α -Reductase Inhibitors	Risk Difference (95% CI)	Risk Ratio (95% CI)
Primary Outcomes								
Hospitalization for HF	3.90 (3.80, 4.00)	3.29 (3.07, 3.52)	60.16 per 10,000 (35.07, 85.25)	1.18 (1.10, 1.27)	3.83 (3.74, 3.93)	3.86 (3.58, 4.14)	-2.33 per 10,000 (-31.97, 27.31)	0.99 (0.92, 1.07)
MACE Outcomes	9.07 (8.93, 9.21)	7.38 (7.04, 7.72)	16.90 per 1,000 (13.31, 20.50)	1.23 (1.17, 1.29)	8.95 (8.81, 9.09)	8.32 (7.92, 8.72)	6.26 per 1,000 (2.15, 10.37)	1.08 (1.02, 1.13)
Composite MACE or Hospitalization for HF	11.30 (11.14, 11.45)	9.26 (8.89, 9.63)	20.38 per 1,000 (16.38, 24.38)	1.22 (1.17, 1.27)	11.14 (10.99, 11.30)	10.40 (9.97, 10.84)	7.40 per 1,000 (2.88, 11.93)	1.07 (1.03, 1.12)
Death from Any Cause	6.11 (5.99, 6.22)	4.95 (4.67, 5.23)	11.54 per 1,000 (8.48, 14.61)	1.23 (1.16, 1.31)	6.03 (5.91, 6.14)	5.64 (5.31, 5.97)	3.85 per 1,000 (0.40, 7.29)	1.07 (1.01, 1.14)
Secondary Outcomes								
PCI Procedure	1.08 (1.03, 1.13)	0.71 (0.61, 0.81)	3.72 per 1,000 (2.59, 4.86)	1.53 (1.31, 1.78)	1.04 (0.99, 1.09)	0.89 (0.75, 1.02)	1.57 per 1,000 (0.15, 2.99)	1.18 (1.01, 1.38)
CABG	0.48 (0.44, 0.51)	0.48 (0.40, 0.56)	-0.46 per 10,000 (-9.38, 8.47)	0.99 (0.82, 1.20)	0.48 (0.44, 0.51)	0.45 (0.37, 0.54)	2.57 per 10,000 (-6.98, 12.11)	1.06 (0.86, 1.31)

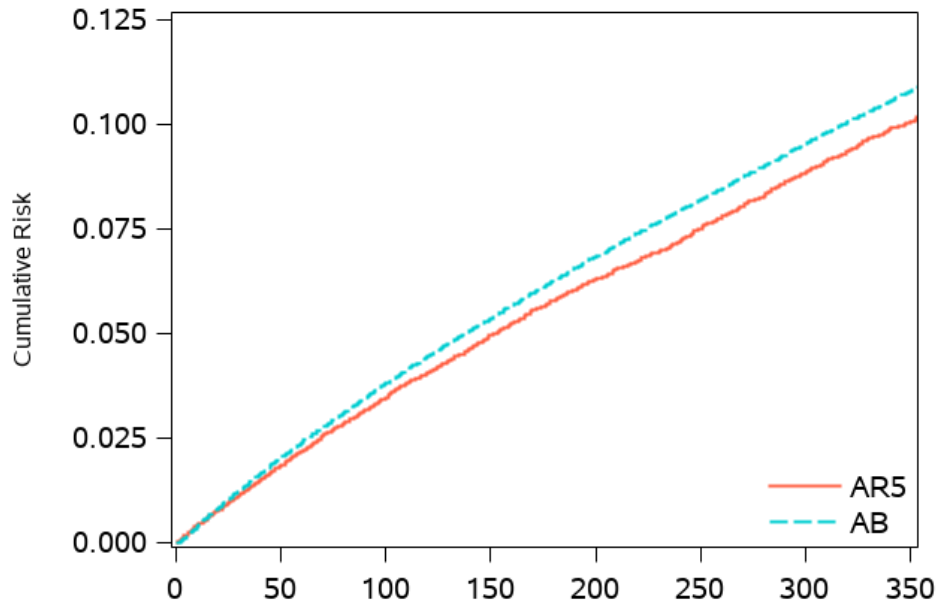
HF = Heart failure; MACE = Major adverse cardiovascular events; PCI = Percutaneous coronary intervention; CABG = coronary artery bypass graft surgery

(a) Heart Failure (HF)

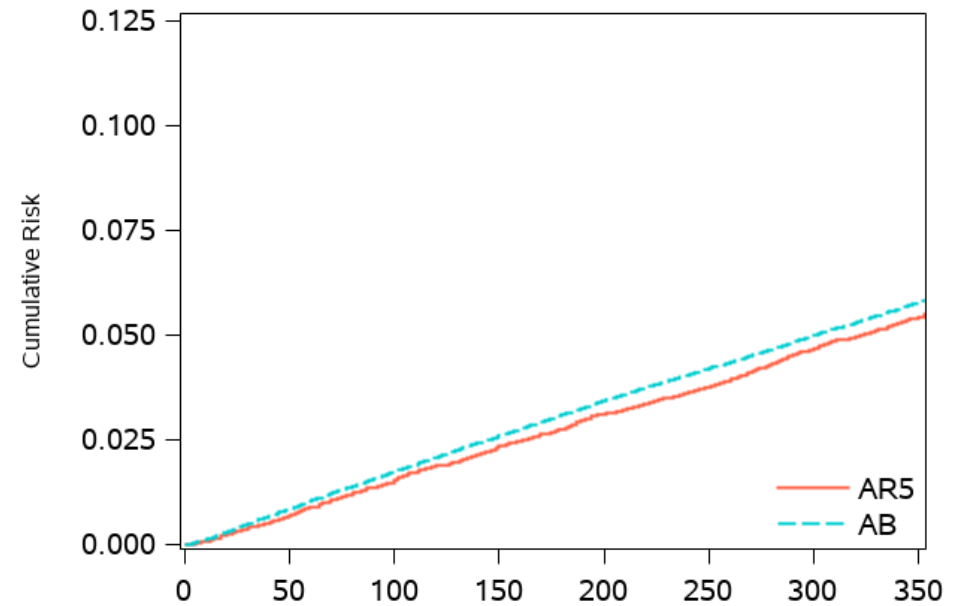
No. At Risk		Days From Treatment Initiation							
	0	50	100	150	200	250	300	350	
AR5	25,905	25,263	24,640	24,080	23,482	22,899	22,370	21,806	
AB	162,588	156,916	151,719	146,863	142,104	137,576	133,081	128,902	

(b) Major Adverse Cardiovascular Events (MACE)

No. At Risk		Days From Treatment Initiation							
	0	50	100	150	200	250	300	350	
AR5	25,942	25,279	24,673	24,098	23,487	22,922	22,379	21,806	
AB	162,908	157,318	152,110	147,224	142,375	137,804	133,190	128,876	

(c) Composite MACE or HF

No. At Risk		Days From Treatment Initiation							
	0	50	100	150	200	250	300	350	
AR5	25,819	25,048	24,362	23,732	23,076	22,454	21,876	21,273	
AB	161,753	155,259	149,444	144,160	138,987	134,118	129,315	124,876	

(d) All-Cause Mortality

No. At Risk		Days From Treatment Initiation							
	0	50	100	150	200	250	300	350	
AR5	26,040	25,510	24,992	24,502	23,957	23,454	22,969	22,449	
AB	163,846	159,169	154,695	150,376	146,040	141,893	137,693	133,709	