

1  
2  
3 **Supplementary Materials**

4 **Effectiveness of Canadian travel restrictions in reducing burden of**  
5 **SARS-CoV-2 variants of concern**

6 Angela McLaughlin<sup>1,2</sup>, Vincent Montoya<sup>1</sup>, Rachel L. Miller<sup>1</sup>, Canadian COVID-19 Genomics  
7 Network (CanCOGeN) Consortium, Michael Worobey<sup>3</sup>, Jeffrey B. Joy<sup>1,2,4\*</sup>  
8

9 <sup>1</sup>British Columbia Centre for Excellence in HIV/AIDS; British Columbia, V6Z 1Y6, Canada.

10 <sup>2</sup>Bioinformatics, University of British Columbia; British Columbia, V5T 4S6, Canada.

11 <sup>3</sup>Department of Ecology and Evolution, University of Arizona; Arizona, 85721, United States.

12 <sup>4</sup>Department of Medicine, University of British Columbia; British Columbia, V5Z 1M9, Canada.

13  
14 \*Corresponding author. Email: [jjoy@bccfe.ca](mailto:jjoy@bccfe.ca)  
15

16 **The PDF file includes:**

17  
18 Materials and Methods

19 Supplementary Text

20 Figs. S1 to S53

21 Tables S1 to S3

22 References 1-13  
23  
24  
25  
26  
27  
28  
29  
30  
31  
32  
33  
34  
35  
36  
37  
38  
39  
40  
41  
42

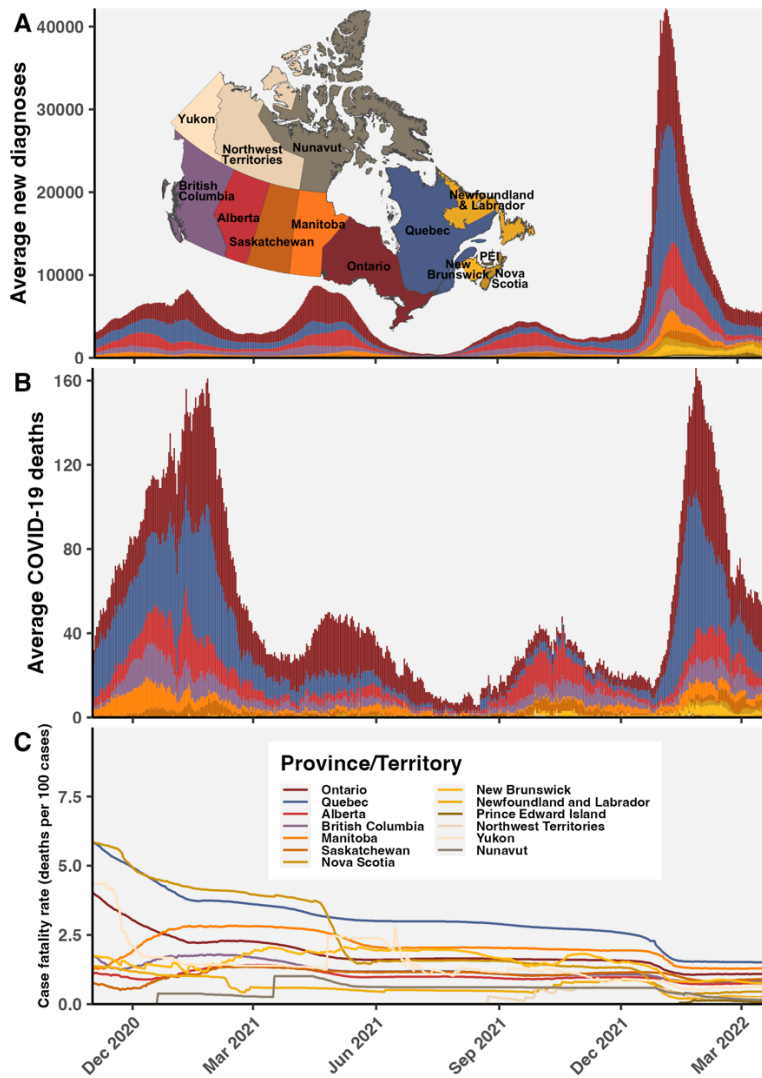
43

44 **Materials and Methods**

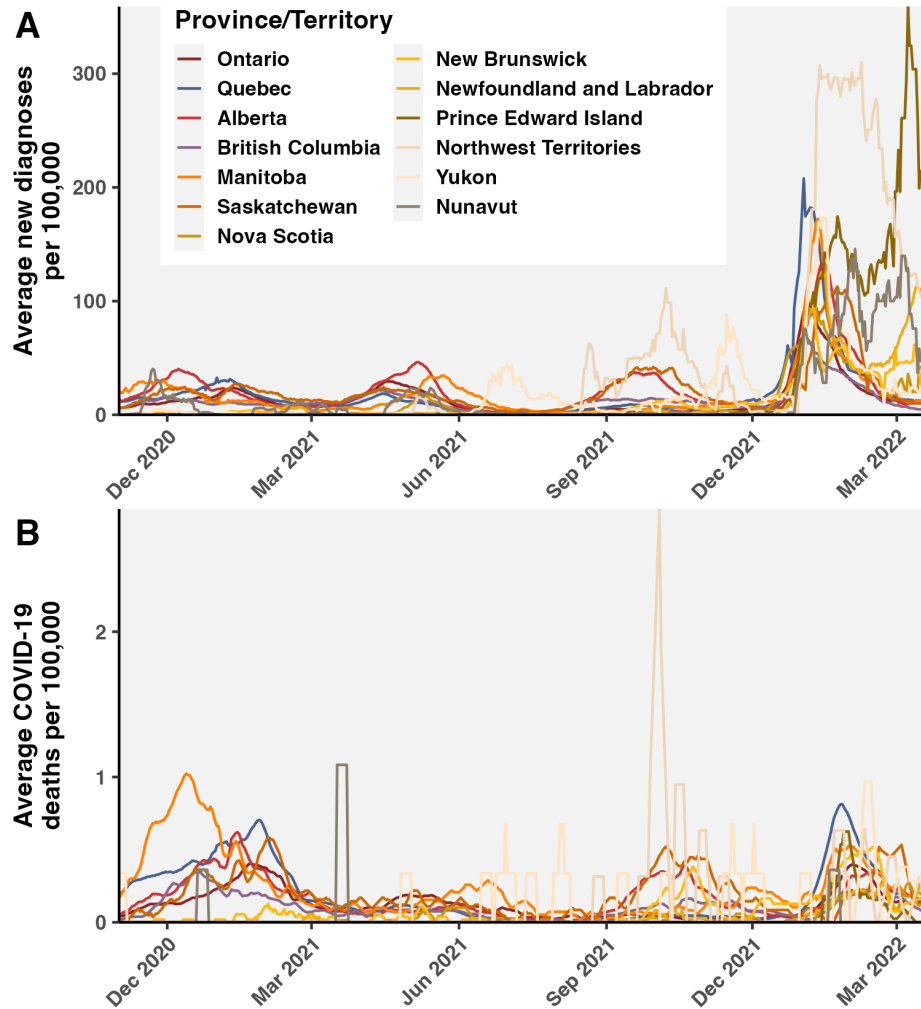
45

46 COVID-19 incidence, mortality, and case fatality rates across Canadian provinces and territories

47 Incidence, mortality, and average case fatality rate (CFR) were compared across provinces and  
48 territories to investigate differences in case ascertainment (**Figs. S1, S2**). Although the  
49 predominance of Omicron from January 2022 onwards was associated with lower CFR and testing,  
50 affecting the final months of the study period, our analyses assume comparable case ascertainment  
51 across provinces and over time.  
52



53 **Fig. S1. Comparison of COVID-19 cases, deaths, and case fatality rate across Canadian**  
54 **provinces and territories.** Average daily (A) new diagnoses, (B) deaths due to COVID-19, and  
55 (C) case fatality rate over time from November 1, 2020 to March 22, 2022. Averages calculated  
56 as right-aligned 7-day rolling averages. Data from Public Health Agency of Canada (1).  
57  
58



59  
 60 **Fig. S2. Population-normalized daily case incidence and death rates. (A)** Average daily new  
 61 diagnoses per 100,000. **(B)** Average daily deaths from COVID-19 per 100,000. Population sizes  
 62 for provinces and territories from the Statistics Canada 2021 Census (2).  
 63  
 64  
 65  
 66  
 67  
 68  
 69  
 70  
 71  
 72  
 73  
 74  
 75

76 Summary of variants of concern and interest studied

77

78 **Table S1. SARS-CoV-2 variants of concern (VOCs) and interest (VOIs) prior to and**  
 79 **including early Omicron lineages, ordered by first Canadian sample date.** Lambda, Theta,  
 80 GH/490R, and BA.3 were not included because they were sampled fewer than 100 times in  
 81 Canada. First global sample dates were obtained from cov-lineage.org for VOCs and outbreak.info  
 82 for VOIs; discrepancies between the two were noted. The first Canadian sample date was pulled  
 83 from clean GISAID sequences, excluding dates preceding first global sample date or incomplete  
 84 dates.

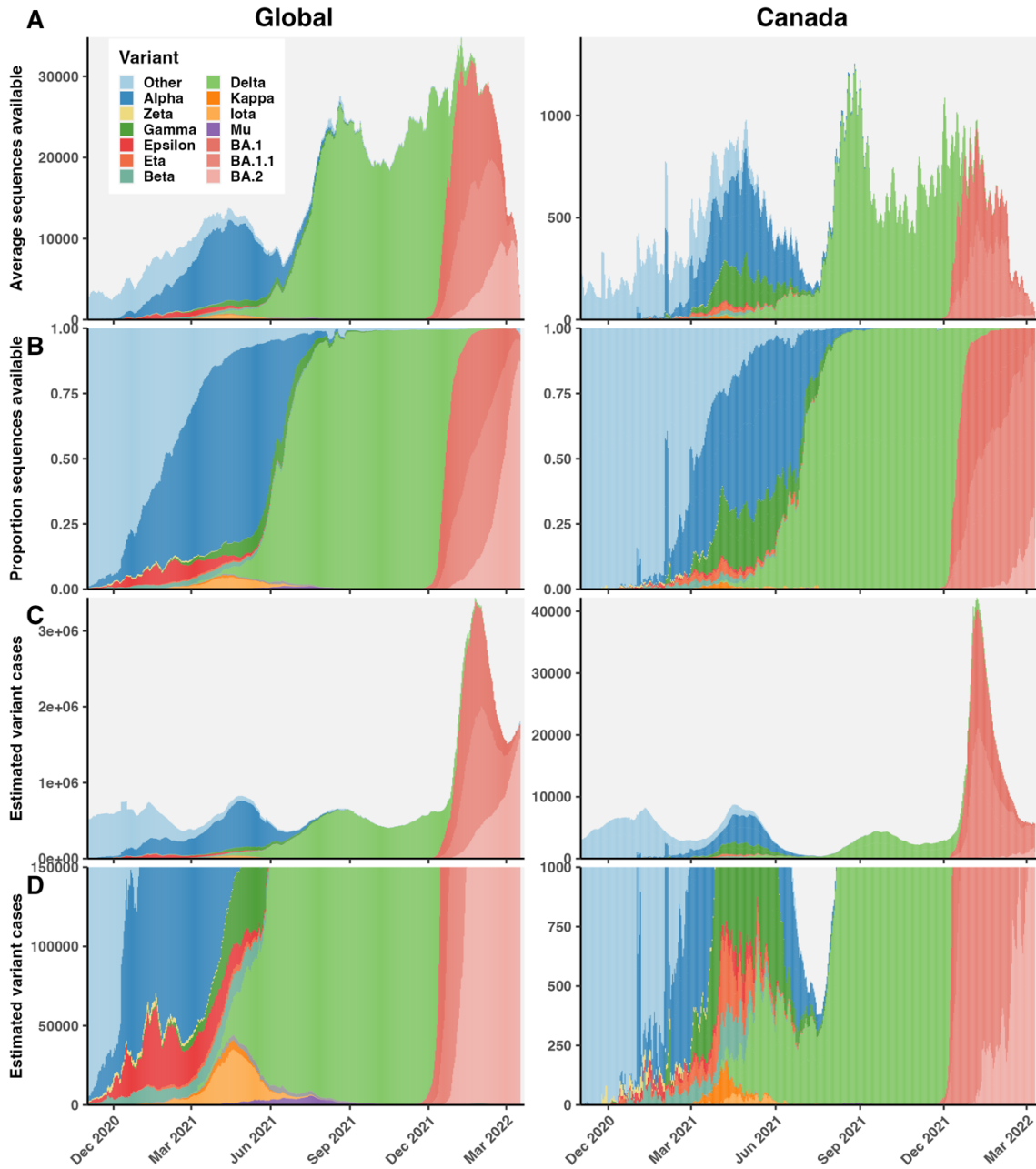
Variant type	WHO variant	Pango lineage	GISAID clade	First global detection	First global sample date	First Can. sample date	Notes
VOC	Alpha	B.1.1.7; Q.*	GRY	UK	2020-09-01	2020-11-06	outbreak.info earliest date: 2020-02-07
VOI	Zeta	P.2	GR/484K.V2	Brazil	2020-04-13	2020-11-24	n/a
VOC	Gamma	P.1	GR/501Y.V3	Brazil	2020-09-22	2020-12-04	outbreak.info earliest date: 2020-03-15
VOI	Epsilon	B.1.427; B.1.429	GH/452R.V1	California, USA	2020-04-11	2020-12-05	Dates reflect B.1.427. For B.1.429, outbreak.info earliest date: 2020-01-26
VOI	Eta	B.1.525	G/484K.V3	Nigeria; UK	2020-03-25	2020-12-14	Earliest sample from Senegal
VOC	Beta	B.1.351	GH/501Y.V2	South Africa	2020-09-01	2020-12-19	outbreak.info earliest date: 2020-02-15. First sample from Zimbabwe
VOI	Kappa	B.1.617.1	G/452R.V3	India	2020-03-03	2021-02-26	n/a
VOC	Delta	B.1.617.2; AY.*	GK	India	2021-03-01	2021-03-06	outbreak.info earliest date: 2020-03-27
VOI	Iota	B.1.526	GH/253G.V1	New York, USA	2020-01-28	2021-03-17	n/a
VOI	Mu	B.1.621	GH	Colombia	2020-12-15	2021-06-08	n/a
VOC	Omicron	BA.1; BA.2	GRA	South Africa; Botswana	2021-11-08	2021-11-04	outbreak.info earliest date: 2020-05-24. First GISAID sample, BA.1: 2021-11-02 from UK; for BA.1.1: 2021-11-04 from Austria

85 **Table S2. Summary of inferred number of VOC and VOI introductions by March 22, 2022.**  
 86 Mean and 95% confidence interval calculated using t-distribution were reported.

WHO variant	Pango lineage	N introduction	N sublineages	N singletons	% singletons
Alpha	B.1.1.7; Q.*	672 (652-693)	234 (228-240)	438 (418-459)	65.2 (64.1-66.2)
Zeta	P.2	24 (24-24)	9 (9-9)	15 (15-15)	62.5 (62.5-62.5)
Gamma	P.1	197 (185-210)	38 (37-40)	159 (148-170)	80.7 (80.0-81.0)
Epsilon	B.1.427; B.1.429	76 (74-78)	27 (26-27)	49 (48-51)	65 (63.8-66.1)
Eta	B.1.525	62 (59-65)	24 (23-24)	38 (36-41)	61.6 (60.4-62.7)
Beta	B.1.351	120 (117-124)	40 (40-41)	80 (77-83)	66.7 (65.8-66.9)
Kappa	B.1.617.1	102 (101-103)	21 (20-21)	81 (81-82)	79.8 (79.3-80.3)
Delta	B.1.617.2; AY.*	1822 (1794-1850)	537 (521-553)	1285 (1253-1317)	70.5 (69.8-71.2)
Iota	B.1.526	50 (49-52)	14 (13-14)	37 (36-38)	72.6 (71.3-73.9)
Mu	B.1.621	62 (61-62)	7 (7-7)	55 (54-55)	88.5 (88.1-89.0)
Omicron	BA.1	3634 (3524-3744)	615 (596-633)	3019 (2920-3119)	83.1 (82.6-83.5)
Omicron	BA.1.1	5572 (5337-5806)	1148 (1103-1194)	4423 (4223-4624)	79.4 (78.8-79.9)
Omicron	BA.2	549 (537-565)	87 (83-92)	462 (451-473)	84 (83-85)

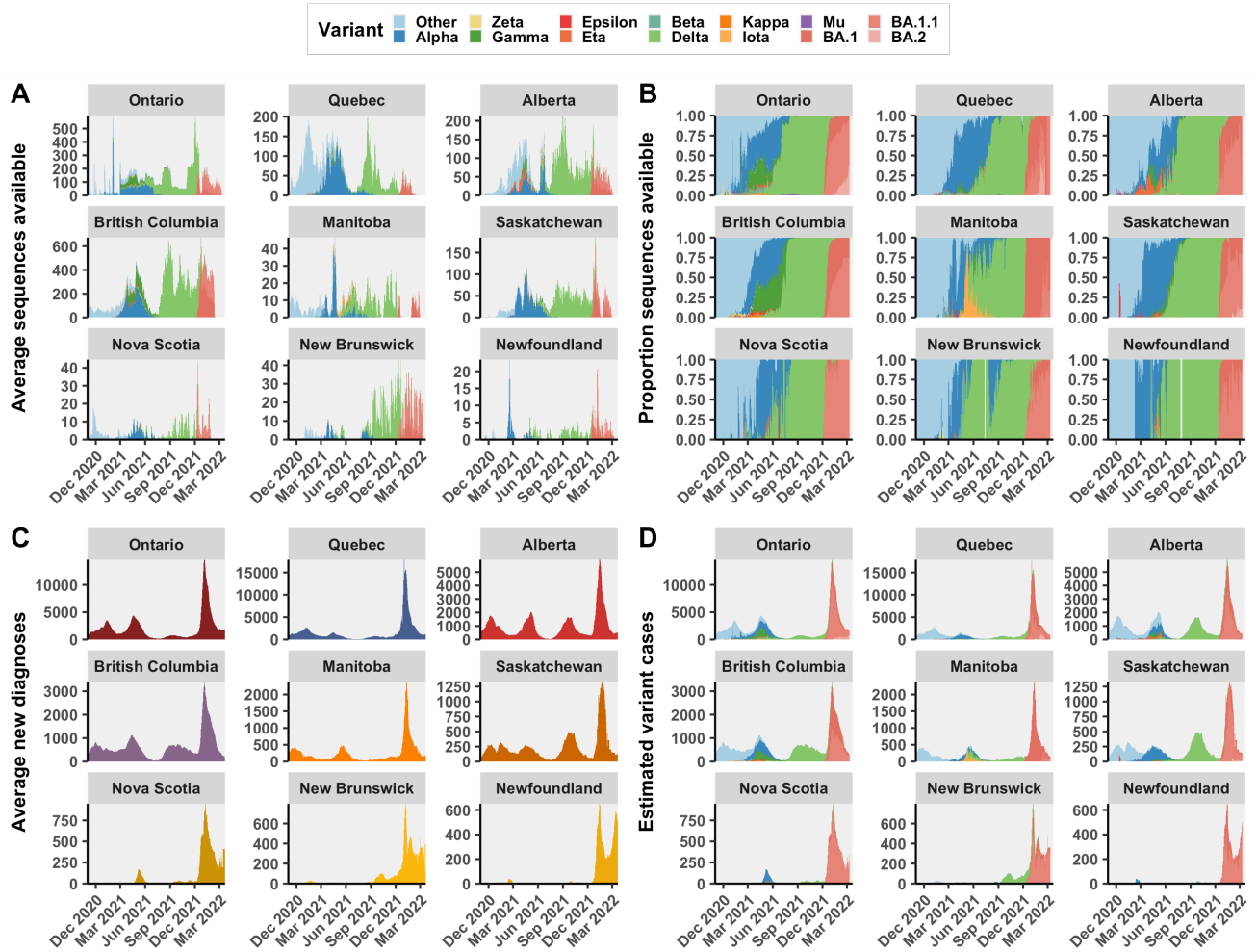
87  
 88 Estimating variant-specific cases  
 89 We deconvoluted cases, similarly to (3), by multiplying variant frequencies from GISAID by  
 90 confirmed cases over time to obtain variant-specific cases over time for all of Canada and globally  
 91 (**Fig. S3**), Canadian provinces (**Fig. S4**), and global regions (**Fig. S6**). Monthly proportional  
 92 contributions of geographic areas to variant cases were used to inform the subsampling  
 93 probabilities of sequences from either Canadian provinces (**Fig. S5**) or global regions (**Fig. S7**).

94

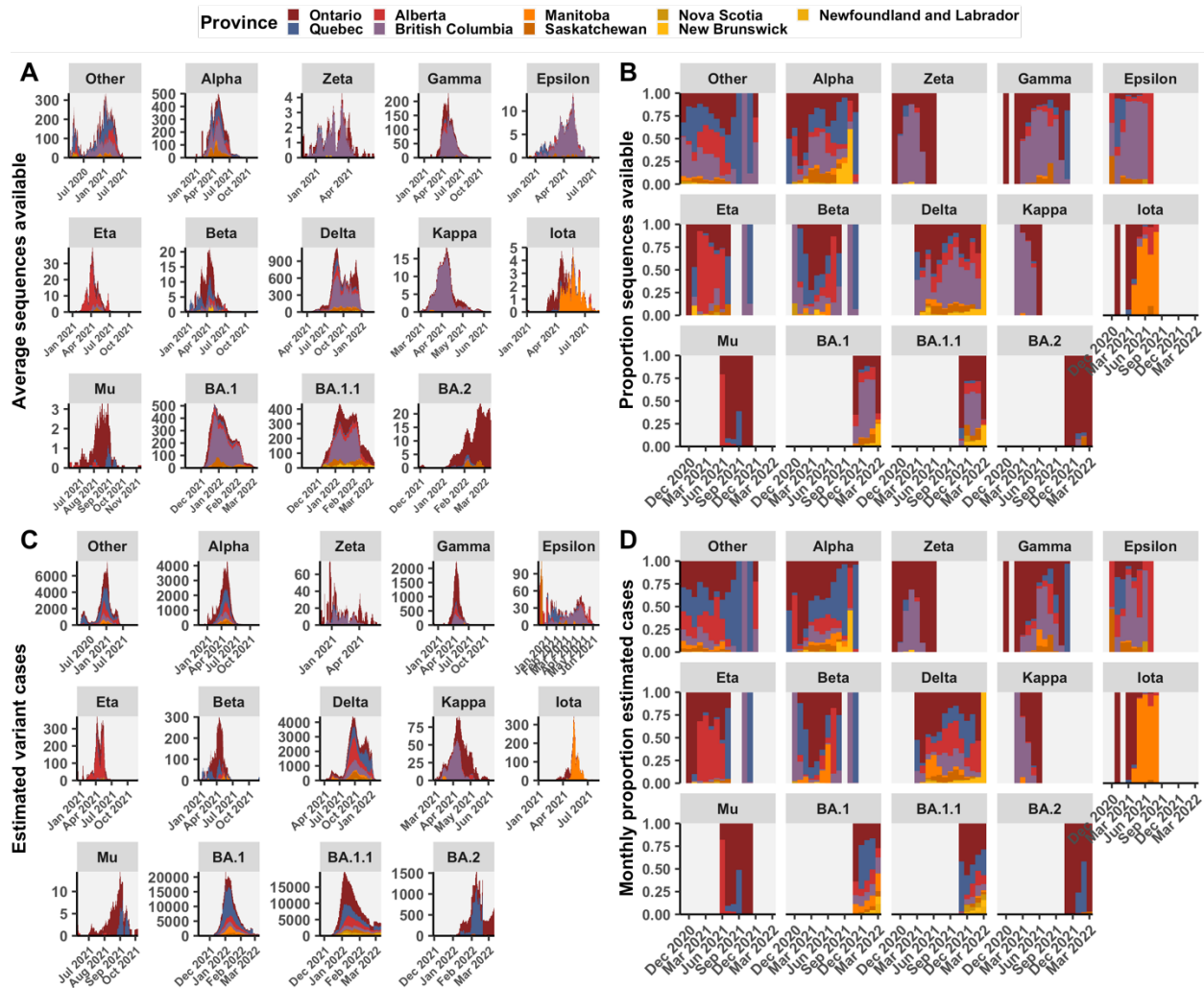


95  
 96 **Fig. S3. Estimation of Canadian and global variant cases as the product of diagnoses and**  
 97 **variant frequencies. (A)** Average daily SARS-CoV-2 genome sequences available on GISAID  
 98 after cleaning, by variant. **(B)** Proportional frequencies of variants among sequences available. **(C)**  
 99 Estimated variant cases, and **(D)** zoomed in below 1000 cases/day and 150,000 cases/day.

100

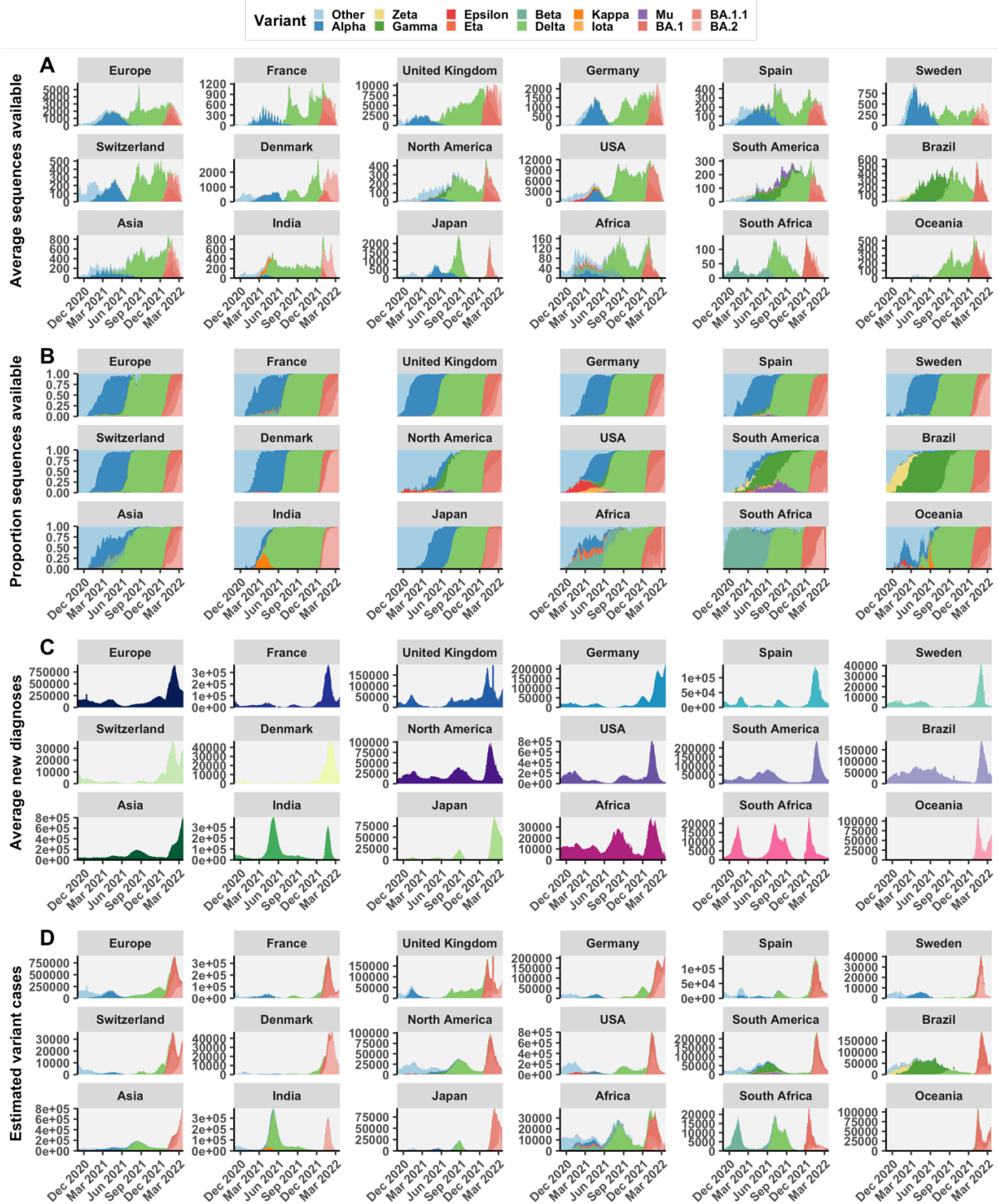


101  
 102 **Fig. S4. Estimation of daily variant cases by Canadian province. (A)** 7-day rolling average  
 103 number of clean GISAID sequences available per day by province, colored by variant. **(B)** Daily  
 104 average proportion of variant sequences within each province. If data was incomplete in the past  
 105 7 days, the raw count was used. For days with no sequences but with non-zero cases, variant  
 106 proportions from the previous day with sequences available were carried forward. **(C)** Daily  
 107 average new diagnoses by province. **(D)** Daily estimated variant-specific cases by province. Only  
 108 provinces with sequences available on GISAID were shown.

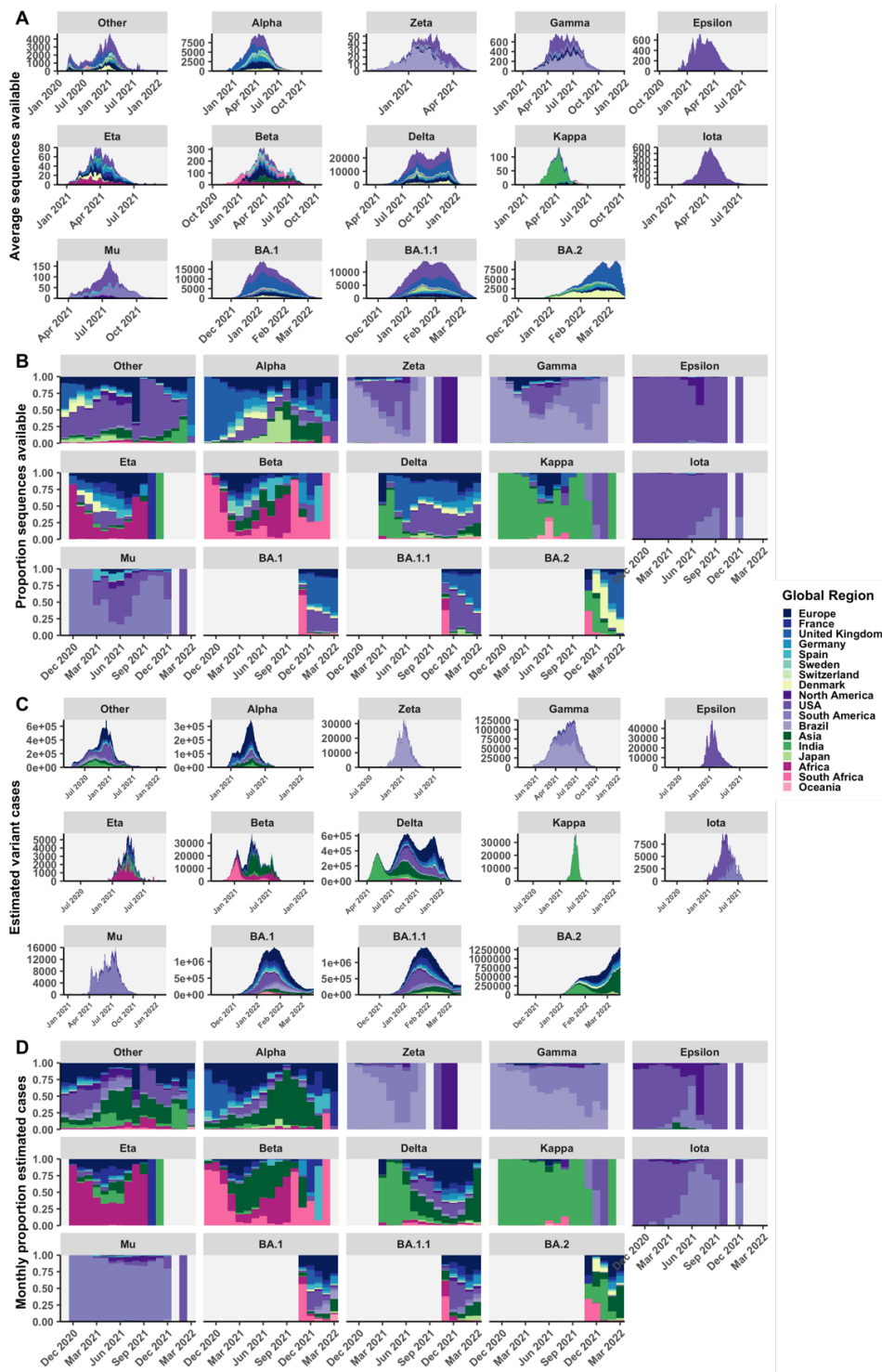


109  
 110 **Fig. S5. Distribution of available sequences and estimated variant cases by Canadian**  
 111 **province. (A)** The rolling 7-day average daily and **(B)** monthly proportional sequences available  
 112 by variant colored by province. **(C)** The estimated daily variant-specific cases and **(D)** monthly  
 113 proportional contribution of each province to variant-specific cases; the latter informs the sampling  
 114 probability of sequences in the analysis.





115  
 116 **Fig. S6. Estimation of daily variant cases by global region. (A)** Daily average clean GISAID  
 117 sequences available by region, colored by variant. **(B)** Daily average proportion of sequences  
 118 contributed by each variant to regional totals. If data was incomplete in the past 7 days, the raw  
 119 count was used. For days with zero sequences and non-zero cases, variant proportions from the  
 120 previous day with sequences available were carried forward. **(C)** Daily average new diagnoses by  
 121 global region. **(D)** Daily estimated variant-specific cases by region.



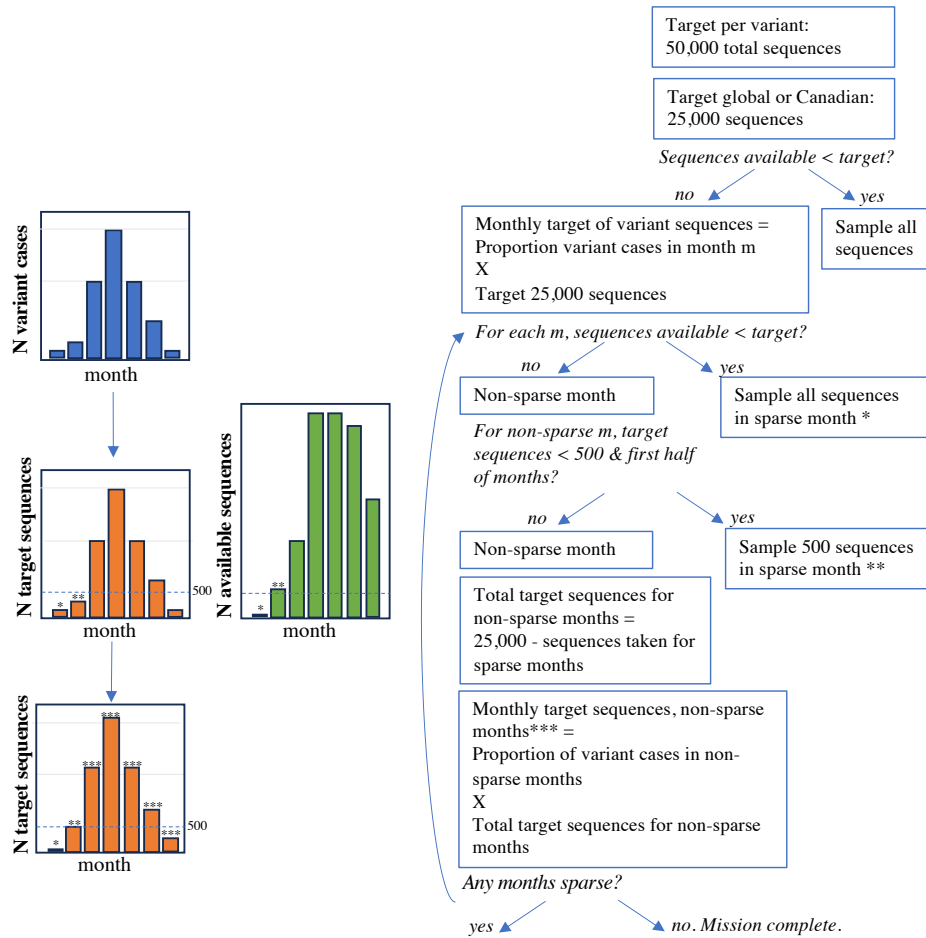
123  
 124 **Fig. S7. Distribution of available sequences and estimated variant cases, by global region.**  
 125 (A) The rolling 7-day average daily and (B) monthly proportional sequences available by variant  
 126 colored by region. (C) The estimated daily variant-specific cases and (D) monthly proportional  
 127 contribution of each region to variant-specific cases; the latter informs the sampling probability of  
 128 sequences in the analysis.

129 **Table S3. The cumulative number of estimated variant cases globally and in Canada up to**  
 130 **the day of data download March 22, 2022, relative to clean sequences available on GISAID.**  
 131 Cumulative cases by variant were summed across global regions or Canadian provinces. Excludes  
 132 sequences with unidentified lineage, Theta, Lambda, and GH/490R.

Variant	Global			Canada		
	Cumulative cases	Clean sequences	Sequence per case	Cumulative cases	Clean sequences	Sequence per case
Other	109,632,102	942,487	0.009	930,569	58,001	0.062
Alpha	31,471,326	1,065,890	0.034	307,680	42,596	0.138
Zeta	2,520,842	4,721	0.002	2,906	244	0.084
Gamma	15,750,416	98,939	0.006	93,762	13,488	0.144
Epsilon	3,223,780	63,369	0.02	5,591	752	0.135
Eta	445,556	6,733	0.015	19,067	1,800	0.094
Beta	4,290,486	35,606	0.008	18,326	1,414	0.077
Delta	111,501,622	3,921,060	0.035	500,617	111,192	0.222
Kappa	1,638,294	6,621	0.004	2,838	481	0.169
Iota	917,808	38,216	0.042	8,325	302	0.036
Mu	1,369,309	13,140	0.01	405	126	0.311
BA.1	65,751,679	903,272	0.014	630,408	21,242	0.034
BA.1.1	69,901,000	791,147	0.011	741,437	21,920	0.03
BA.2	42,513,492	404,349	0.01	38,009	817	0.021

133  
 134 Subsampling strategy  
 135 In our previous study of the first two waves of SARS-CoV-2 in Canada in 2020 and early 2021,  
 136 we subsampled sequences from provinces or countries with probabilities reflecting geographies'  
 137 monthly proportional contributions to cases (4). The more data were subsampled, the more bias  
 138 was reduced for previously overrepresented geographies; however, when less than 50% of the data  
 139 were from Canada, our ability to identify introductions was lessened. An even split of 50% global  
 140 and 50% Canadian sequences per subsample identified the most introductions. The current analysis  
 141 of variant dynamics differs in a few fundamental ways. First, the available number of sequences  
 142 for this period of the pandemic is a magnitude larger than what was available previously.  
 143 Previously, we were sampling from ~60,000 Canadian sequences and ~500,000 global sequences;  
 144 the current analysis draws from ~300,000 Canadian sequences and >5,000,000 global sequences.  
 145 Another difference is the emergence of variants that are not distinguished in the case data, which  
 146 necessitated that we estimate the variant-specific case distribution over time (described above).  
 147 Geographies' monthly contributions to variant-specific cases informed sequences' sampling  
 148 probabilities, downweighing geographies with relatively more sequences per cases. Further, in this  
 149 analysis we applied temporally distributed sampling of sequences per month that mimicked the  
 150 distribution of variant cases (Fig. S5, S7). A simple algorithm was written in R to augment  
 151 sampling of sparse months where relatively few cases were identified (Fig. S8).

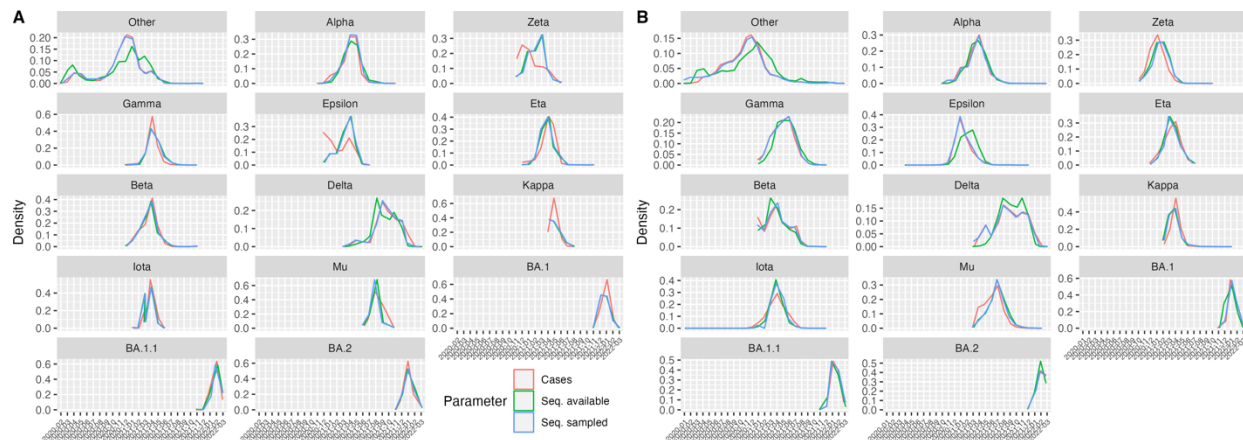
152



153  
154 **Fig. S8. Graphical depiction of algorithm for temporally distributed sequence subsampling.**  
155 Sequences subsampled mimic the distribution of variant cases over time with augmented  
156 representation of sparse early months.

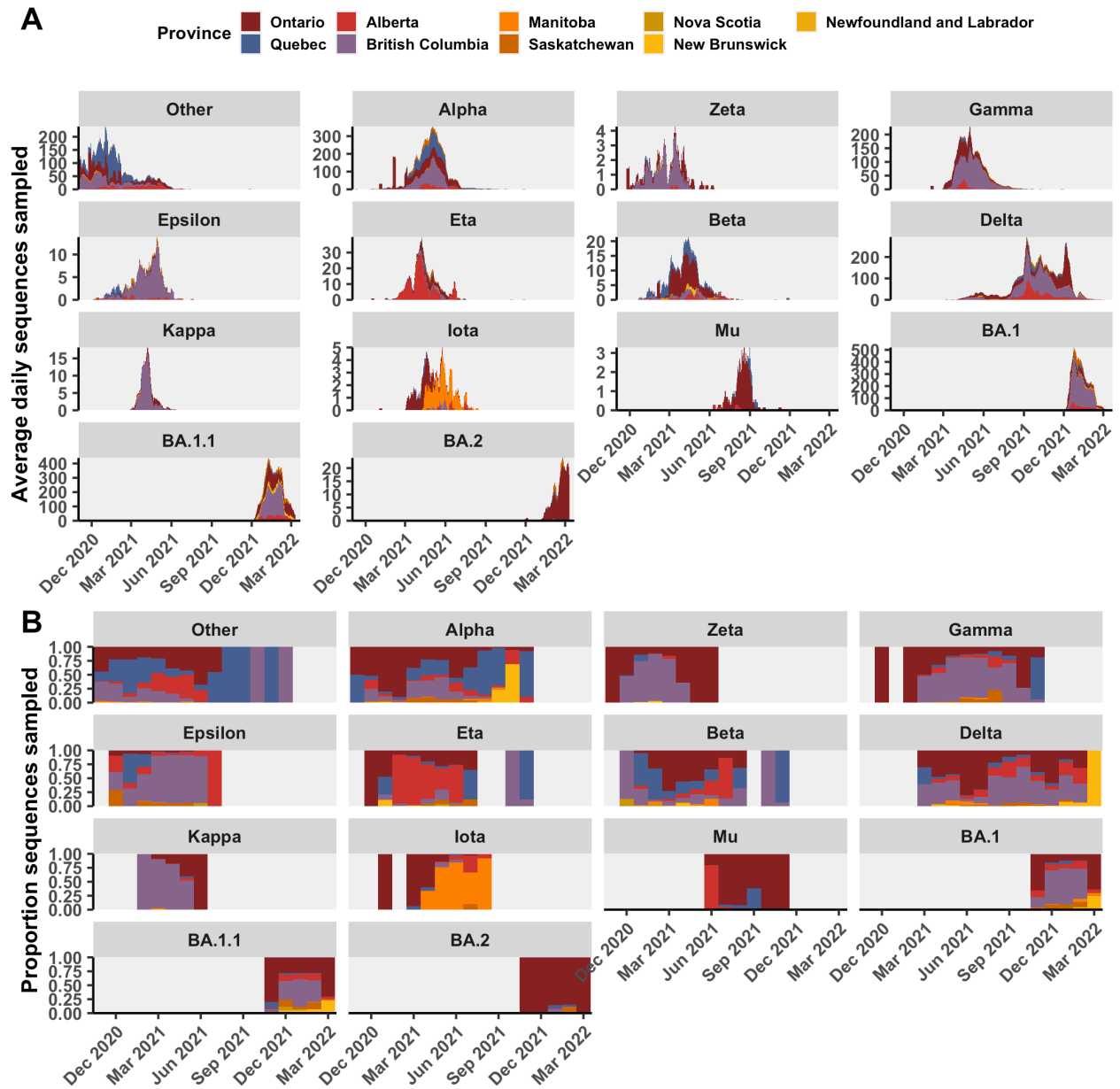
157  
158 Subsampling improved the correlations of monthly cases to sequences among Canadian provinces  
159 and global regions (Fig. S12, S13). For variants like Delta, where sequences were abundant but  
160 differentially collected and submitted (widely different sequence per case ratio), subsampling  
161 improved the correlation for Canadian provinces (Pearson's correlation coefficients: from 0.58 to  
162 0.69) and global regions (from 0.47 to 0.76). Similarly, Alpha correlation improved for global  
163 (0.60 to 0.90) and Canadian (0.65 to 0.77) following subsampling. The correlation between  
164 monthly sequences sampled and monthly cases was improved more with temporally distributed  
165 sampling than uniform sampling for Alpha and Delta variants.

166



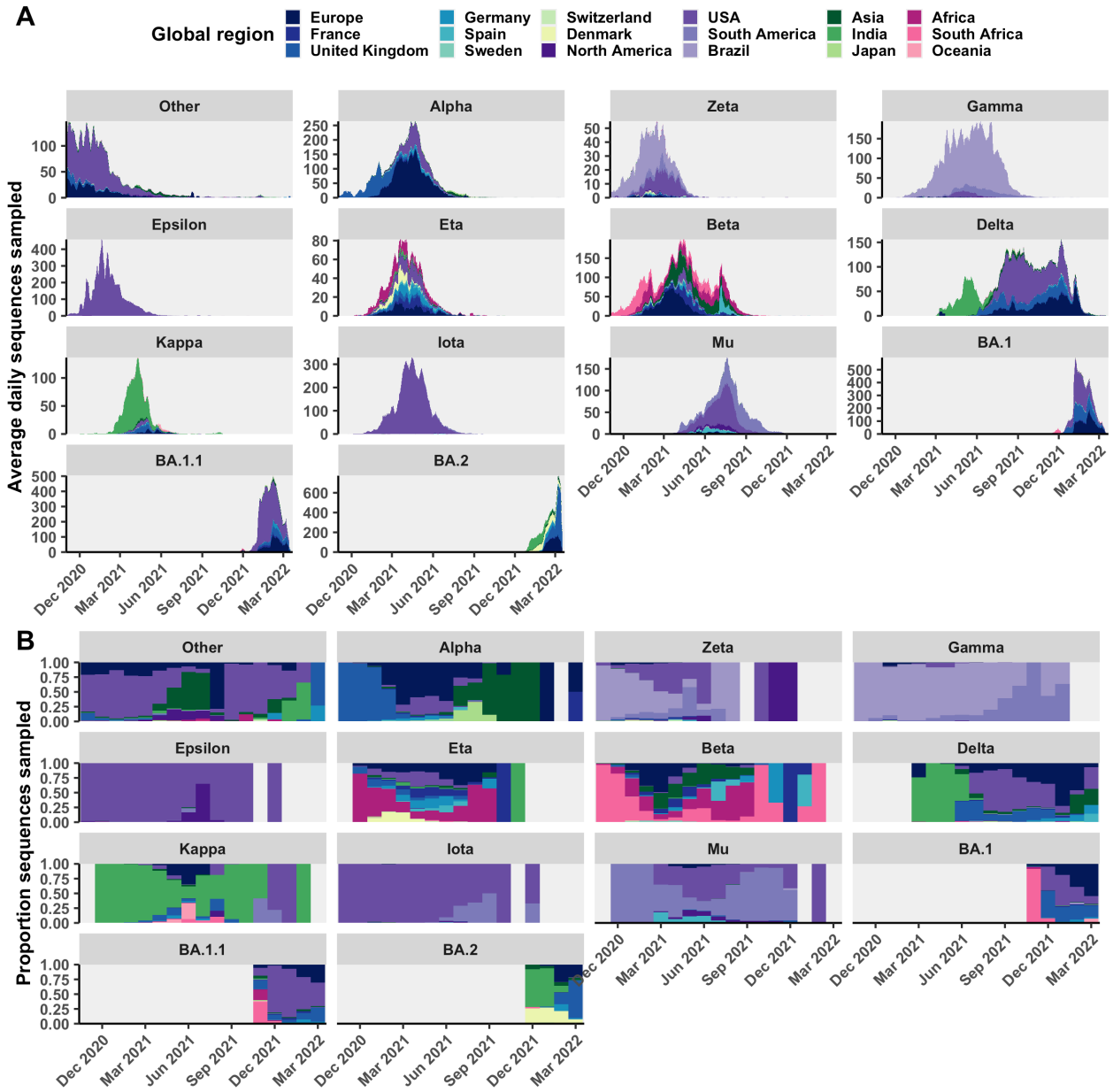
167  
 168 **Fig. S9. The relative monthly distributions of cases and sequences.** Proportions of cases,  
 169 available sequences (seq. available), and sequences taken (seq. sampled) using the temporally  
 170 distributed sampling strategy for each variant in a representative subsample for (A) Canadian and  
 171 (B) global datasets.

172  
 173



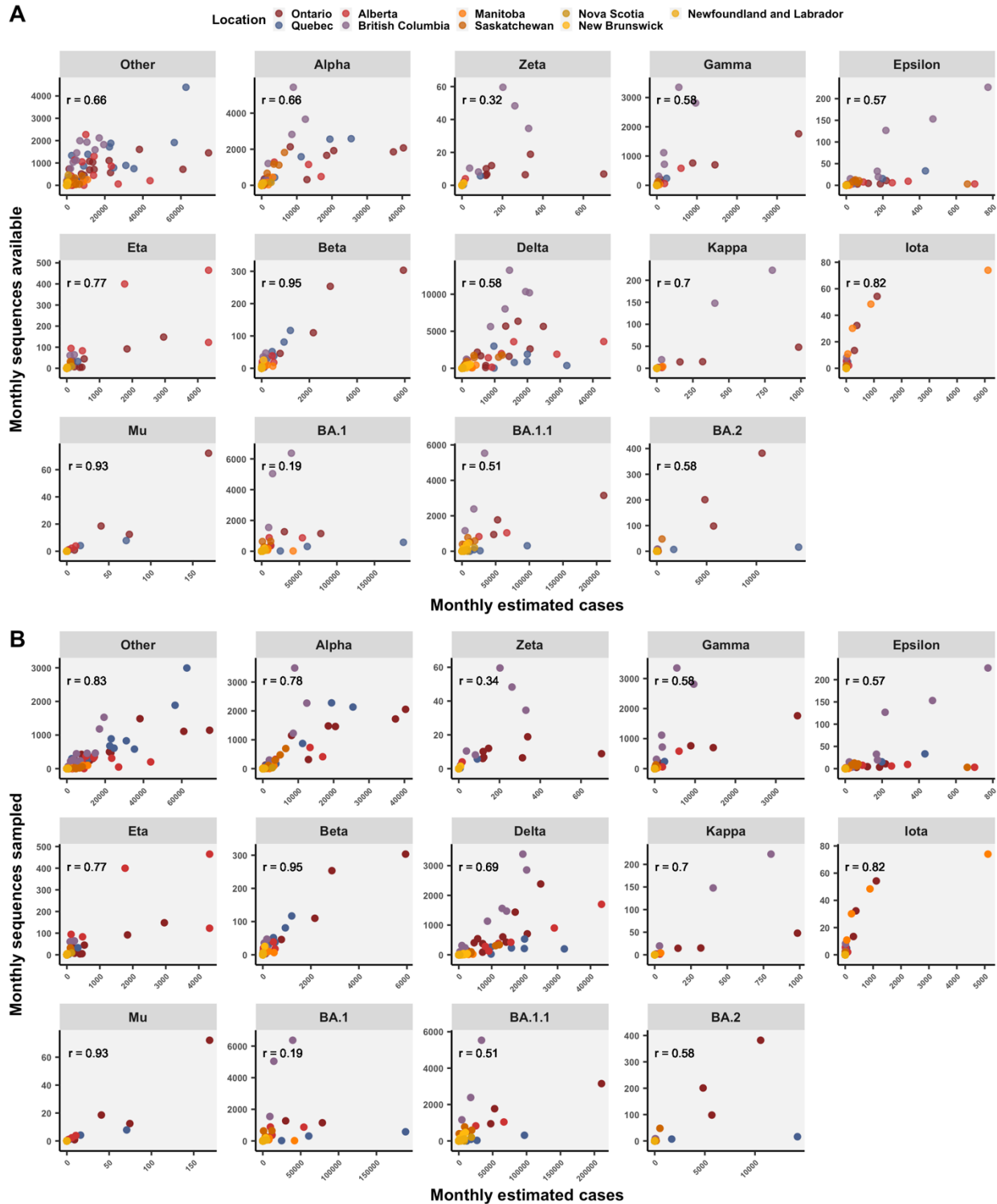
174  
175  
176  
177

**Fig. S10. Average daily and monthly proportion of sequences sampled for each Canadian province for a representative subsample, grouped by variant.**



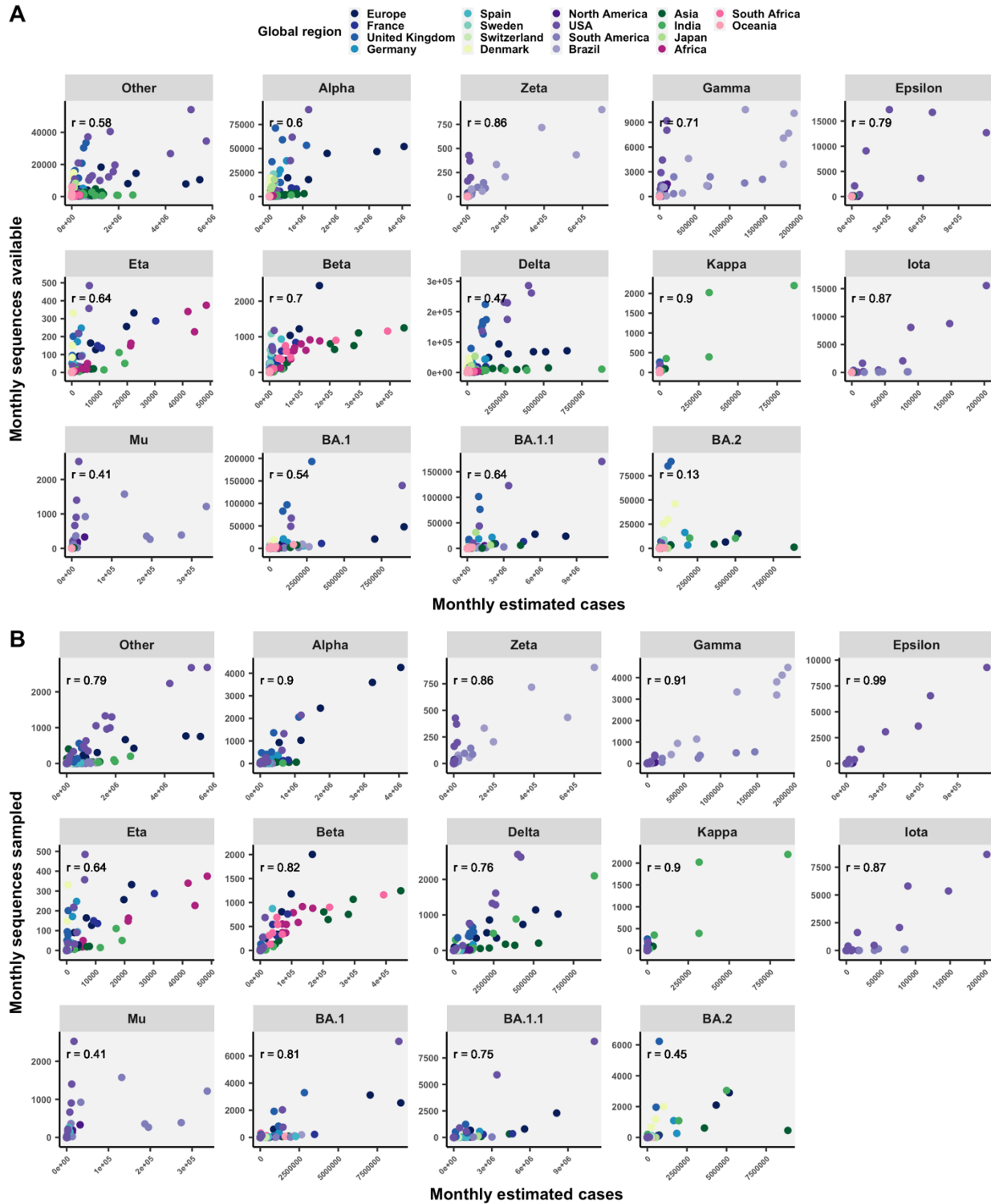
178  
179  
180

**Fig. S11. Average daily and monthly proportion of sequences sampled for each global region for a representative subsample, grouped by variant.**



181 **Fig. S12. Canadian sequence representation.** The relationship between Canadian monthly  
 182 estimated variant cases and (A) monthly sequences available (pre-subsample) for provinces, or (B)  
 183 monthly sequences sampled. Relationships summarized by Pearson's correlation coefficients.

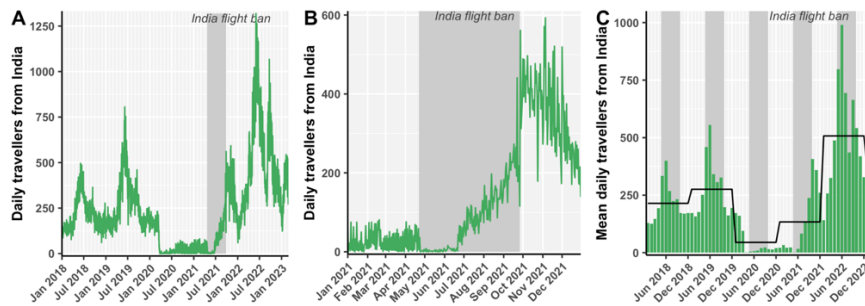




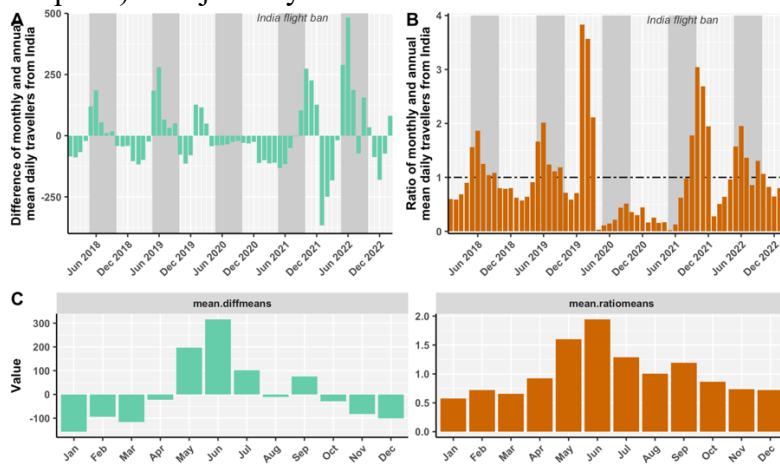
184 **Fig. S13. Global sequence representation.** The correlation between global monthly estimated  
 185 variant cases and (A) monthly sequences available (pre-subsample) for global regions, or (B)  
 186 monthly sequences sampled. Correlations summarized by Pearson's correlation coefficients.

187 Modelling travellers averted using historical travel data

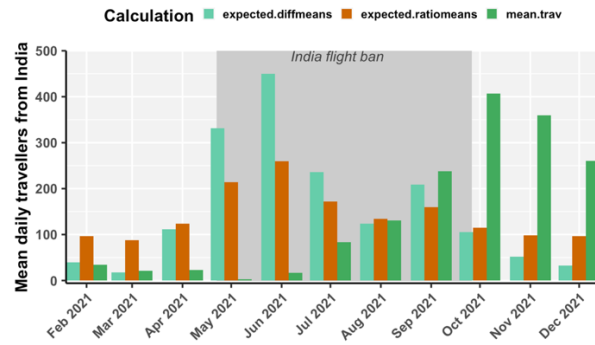
188 Statistics Canada data on international travel arrivals was used to estimate likely travel volume in  
 189 the absence of travel restrictions for all VOCs (5). For the Delta variant, for example, we analyzed  
 190 travel volume from India to Canada from 2018 to 2023. Average daily travellers by month revealed  
 191 seasonality (**Fig. S14C**), with higher-than-average travel volume from India to Canada in April  
 192 and May, and to a lesser extent June to August, in 2018 and 2019 (pre-COVID-19), and 2022 (low  
 193 to negligible COVID-19 restrictions). Seasonality was quantified as the deviation of monthly  
 194 compared to annual average daily travellers - either as the difference in the monthly and annual  
 195 means (diff.means) or the ratio of monthly to annual means (ratio.means) (**Fig. S15**). Across 2018,  
 196 2019 and 2022, we summarized the mean monthly deviation from the annual trend (**Fig. S15C**).  
 197 Expected travel in the absence of the travel ban considering seasonality was estimated as the annual  
 198 mean travel volume, adjusted by monthly diff.means or ratio.means (**Fig. S16**).  
 199



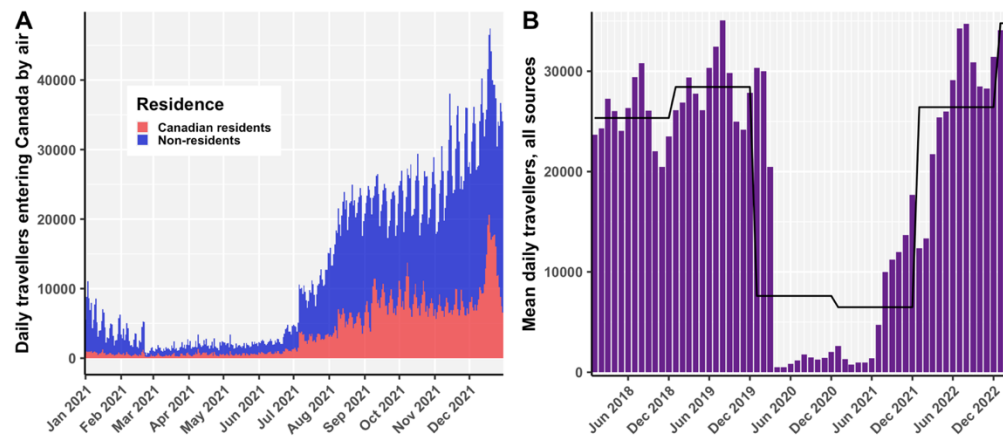
200  
 201 **Fig. S14. Observed daily travellers from India to Canada (A) from January 2018 to 2023, (B)**  
 202 **in 2021. (C) Bar chart of monthly mean daily travellers from India, where the black line is the**  
 203 **mean daily travelers in each calendar year. Highlighted the time of year of the flight ban (April 22**  
 204 **- Sept 26) in adjacent years.**



205  
 206 **Fig. S15. Seasonal variation in travel volume from India summarized by deviation of monthly**  
 207 **compared to annual average daily travellers. (A) Difference between monthly and annual**  
 208 **daily travelers ('diffmeans'). (B) Ratio between monthly and annual mean daily travelers**  
 209 **('ratiomeans'). (C) The mean monthly deviation from the annual trends in 2018, 2019, and 2022.**



210  
 211 **Fig. S16. Observed (mean.trav) and expected mean daily travellers from India in the absence**  
 212 **of the COVID-19-related flight ban based on seasonality trends.** Expected.diffmeans was  
 213 calculated as the average daily travel in 2021 plus the mean diff.mean. Expected.ratiomeans was  
 214 calculated as the average daily travel in 2021 times the mean ratio.mean.



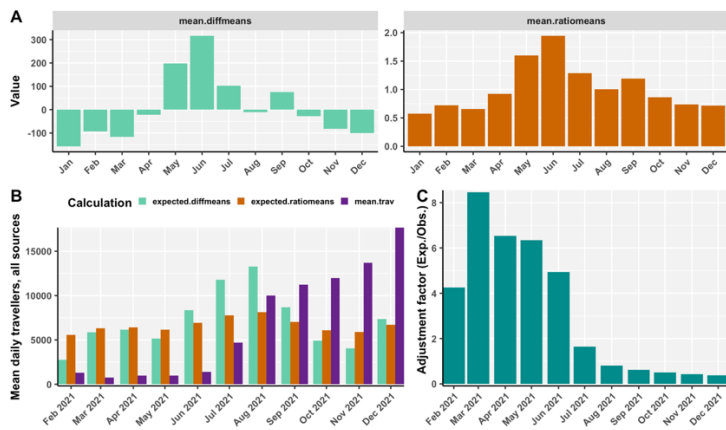
215  
 216 **Fig. S17. Observed daily air travel volume into Canada from all sources. (A)** Daily travellers  
 217 entering Canada by air, colored by Canadian residents vs. non-residents in 2021. **(B)** Monthly  
 218 mean daily travellers from 2018 to 2022 from all sources, with black line for annual means.  
 219

220 With seasonal fluctuations accounted for, we next considered the epochal changes in travel volume  
 221 from all sources into Canada to incorporate broad changes in travel patterns due to other COVID-  
 222 19 restrictions, which may have confounded our estimates (**Fig. S17**). Non-resident visitors and  
 223 Canadian-resident visitors daily travel volume was steadily low in 2021 until July 5, when the  
 224 requirement for fully vaccinated air travelers eligible to enter Canada to quarantine for 3 days in a  
 225 hotel and provide a test after 8 days ended (6). In September 2021, fully vaccinated foreign  
 226 nationals were allowed to enter Canada for non-essential reasons, corresponding to a further  
 227 increase in travel volume. How did observed air travel in 2021 deviate from what we expected  
 228 based on seasonality?  
 229

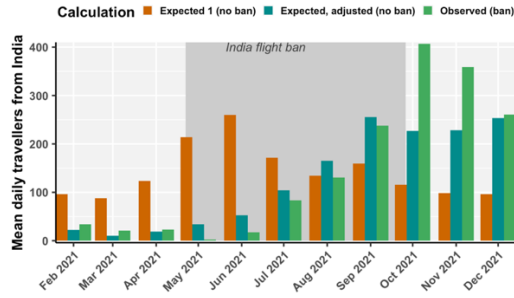
230 Towards this, we applied a similar strategy as conducted above for a singular source (India), but  
 231 for all sources. We calculated the difference and ratio between expected daily travellers (resident  
 232 and non-resident, all sources) based on seasonal trends in 2018, 2019, and 2022, and the observed

233 daily travellers in 2021 from all sources (**Fig. S18**). The monthly ratio of means is an adjustment  
 234 factor that takes into consideration broad travel patterns affected by other policies and willingness  
 235 to travel into Canada in 2021. Monthly adjustment factors were used to correct our expectations  
 236 of monthly travel in the absence of flight bans in India (**Fig. S19**). This adjusted expectation  
 237 considers seasonality in travel from India to Canada based on historical data, average travel from  
 238 India to Canada in 2021, and broad trends in air travel from all sources in 2021. Finally, we  
 239 converted this to a daily expectation from monthly average by fitting a spline to the monthly  
 240 averages (**Fig. S20**). The number of travellers averted was calculated by comparing expected (no  
 241 ban) to observed (with ban).

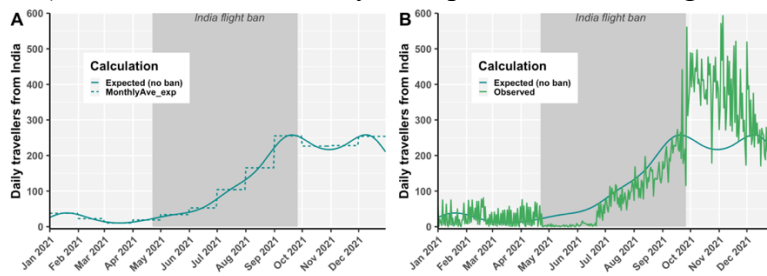
242  
 243 For Delta and the India flight ban, 5,147 travellers from India were averted via the restrictions  
 244 (17,958 expected during the ban, and 12,811 observed). This process was repeated for UK (Alpha),  
 245 Brazil (Gamma), South Africa (Beta), and Africa (Omicron) (**Fig. S21**). We estimated 724  
 246 travellers from the UK were averted during the Alpha intervention; only 3 travellers from South  
 247 Africa were averted during the Beta intervention; 383 travellers were averted from Brazil over  
 248 both Gamma-related restriction periods; 1681 travellers from Africa were averted during the  
 249 Omicron-related travel restriction. Then, we tried to incorporate expected travel volume as a  
 250 confounding factor in the model between sublineage importation rate and variant cases in focal  
 251 source.



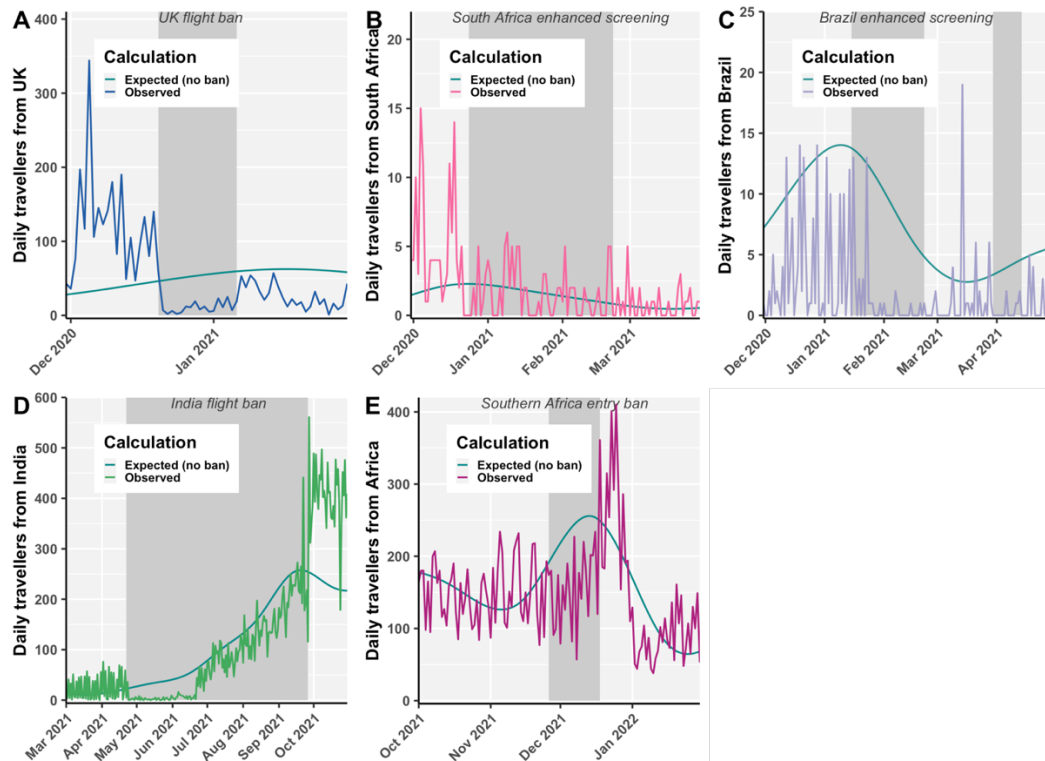
252  
 253 **Fig. S18. Seasonal variation in travel volume from all sources.** (A) Mean monthly deviation  
 254 from the annual trend in 2018, 2019, and 2022, summarized as the mean (across years) of the  
 255 difference in means or ratio of means for each month. (B) Expected daily travellers from all sources  
 256 versus observed (mean.trav), using difference in means or ratio of means. (C) Adjustment factor  
 257 reflecting epochal changes in overall travel was calculated for each month in 2021 as the ratio of  
 258 expected (ratio means) over the observed mean daily travellers.



259  
 260 **Fig. S19. Adjusted expectations of monthly travel volume from India in the absence of flight**  
 261 **bans.** ‘Expected 1 (no ban)’ is based on seasonality in India travel and ‘Expected, adjusted (no  
 262 **ban)’ is based on seasonality and epochal travel changes from all sources.**

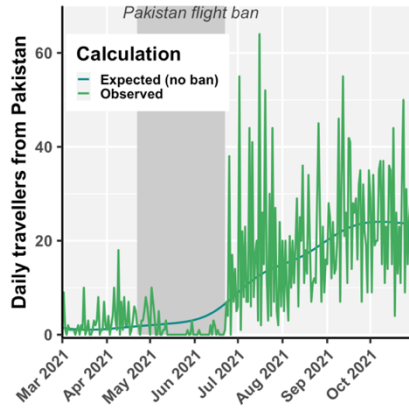


263  
 264 **Fig. S20. Splines convert monthly average expected travellers to daily average travellers.**



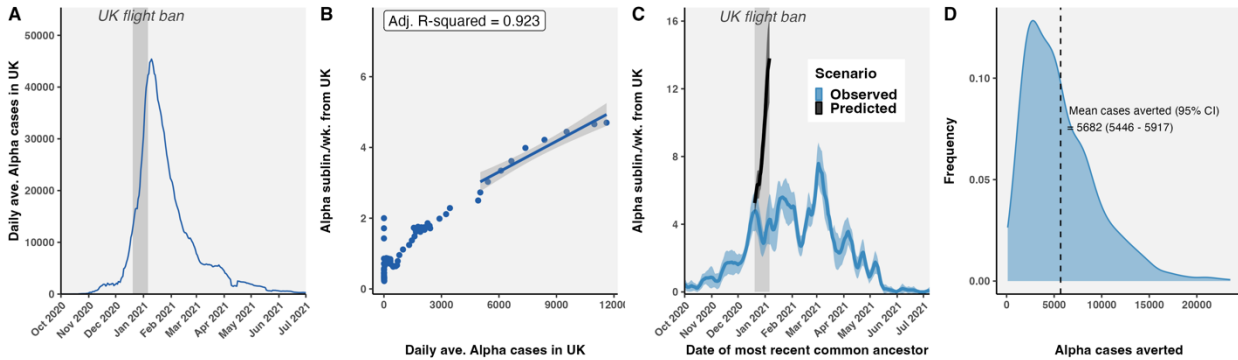
265  
 266 **Fig. S21. Expected (in the absence of restrictions) versus observed daily travellers from focal**  
 267 **countries affected by COVID-19 travel restrictions imposed in Canada.** (A) Alpha from the  
 268 **UK, (B) Beta from South Africa, (C) Gamma from Brazil, (D) Delta from India, and (E) Omicron**  
 269 **from southern Africa (presented for all of Africa).**

270

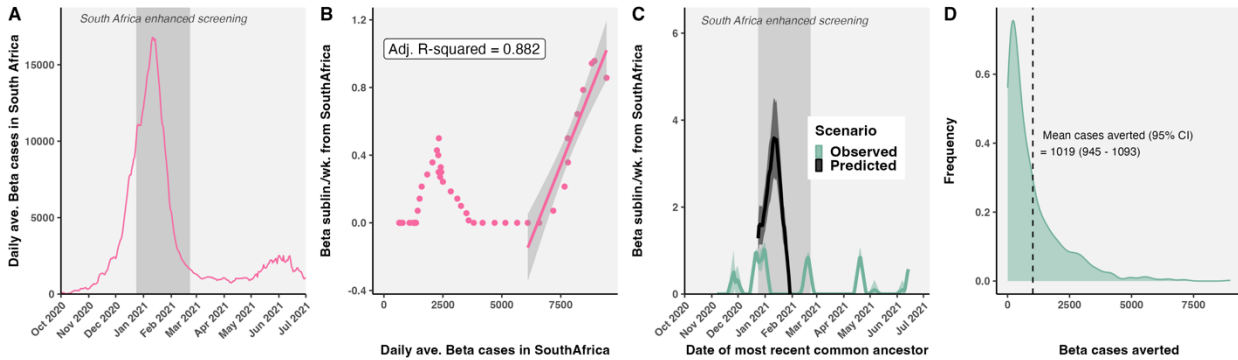


271  
272 **Fig. S22. Expected versus observed daily travellers from Pakistan to Canada in the context**  
273 **of the two-month flight ban countering the Delta variant.**  
274  
275

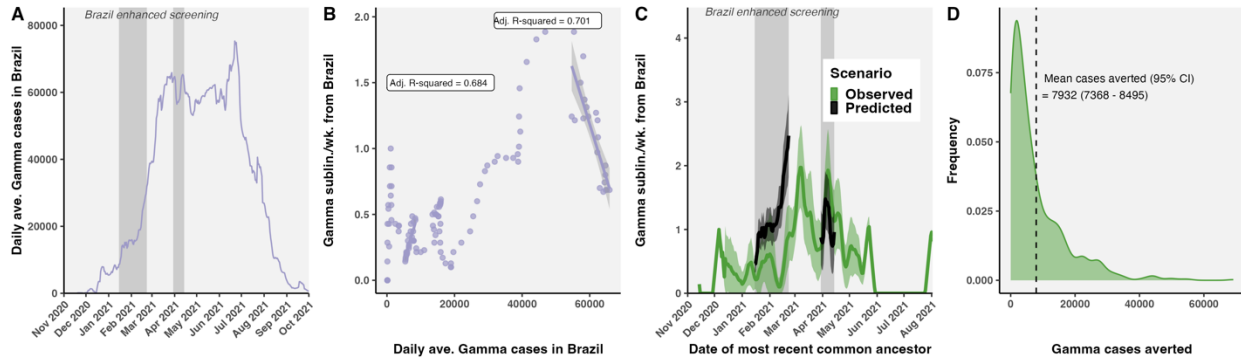
**Modelling importations and cases averted**



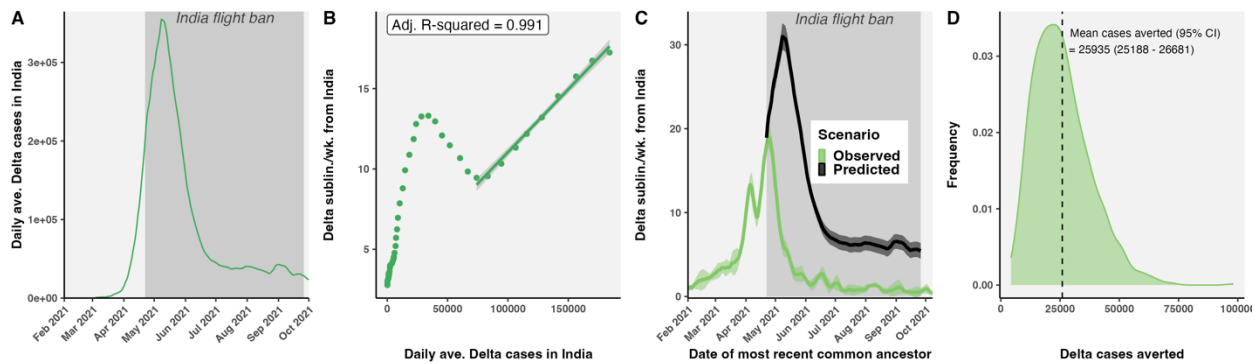
276  
277 **Fig. S23. Alpha sublineages and descendant cases averted. (A) Estimated average daily**  
278 **Alpha cases in the UK. (B) Linear model fit to Alpha sublineages per week from UK versus**  
279 **average daily Alpha cases in UK prior to restrictions, subset to greater than 5000 cases. (C)**  
280 **Observed and predicted Alpha sublineages per week from the UK. (D) Total descendant cases**  
281 **averted across all averted sublineages**  
282



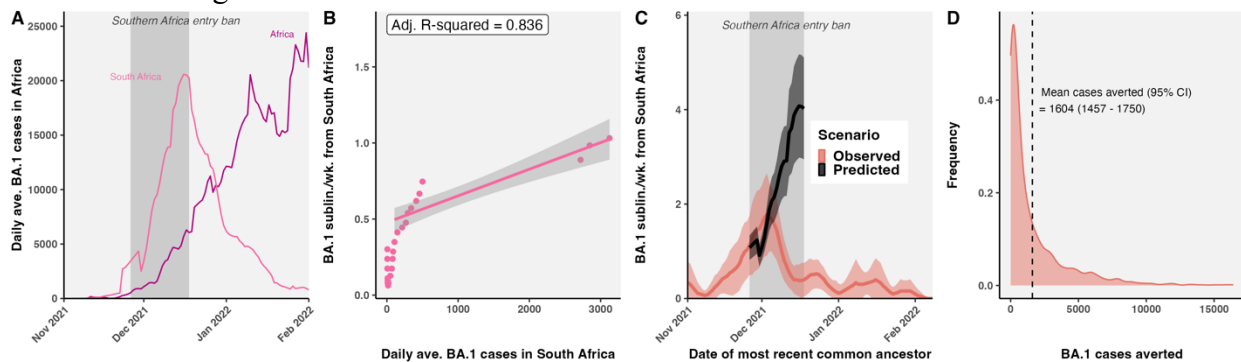
283  
284 **Fig. S24. Beta sublineages and descendant cases averted. (A) Estimated average daily Beta**  
285 **cases in South Africa. (B) Linear model fit to Beta sublineages per week from South Africa versus**  
286 **average daily Beta cases in South Africa prior to restrictions, subset to greater than 6000 cases.**  
287 **(C) Observed and predicted Beta sublineages per week from South Africa. (D) Total descendant**  
288 **cases across all averted sublineages.**



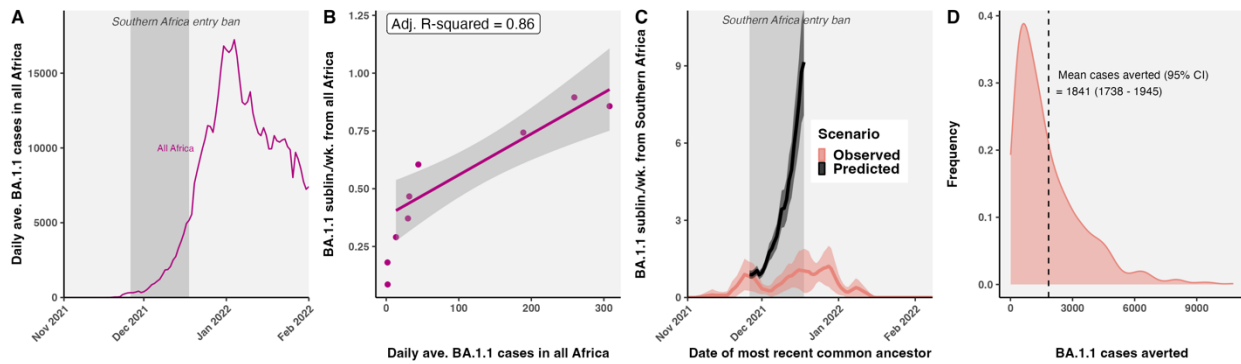
289  
 290 **Fig. S25. Gamma sublineages and descendant cases averted for two interventions. (A)**  
 291 **Estimated average daily Gamma cases in Brazil. (B) Linear model fit to Gamma sublineages**  
 292 **per week from Brazil versus average daily Gamma cases in Brazil prior to restrictions, subset to**  
 293 **greater than 5000 cases for the first intervention period. (C) Observed and predicted Gamma**  
 294 **sublineages per week from Brazil. (D) Total descendant cases across all averted sublineages.**  
 295



296  
 297 **Fig. S26. Delta sublineages and descendant cases averted. (A) Estimated average daily Delta**  
 298 **cases in India. (B) Linear model fit to Delta sublineages per week from India versus average daily**  
 299 **Delta cases in India prior to restrictions, subset to greater than 70,000 cases. (C) Observed and**  
 300 **predicted Delta sublineages per week from India. (D) Total descendant cases averted across all**  
 301 **averted sublineages.**



302  
 303 **Fig. S27. Omicron BA.1 sublineages and descendant cases averted. (A) Estimated average**  
 304 **daily Omicron cases in South Africa and other African nations. (B) Linear model fit to**  
 305 **Omicron sublineages per week from South Africa versus average daily Omicron cases in South**  
 306 **Africa prior to restrictions, subset to greater than 25 cases. (C) Observed and predicted Omicron**  
 307 **sublineages per week from South Africa. (D) Total descendant cases averted across all averted**  
 308 **sublineages.**



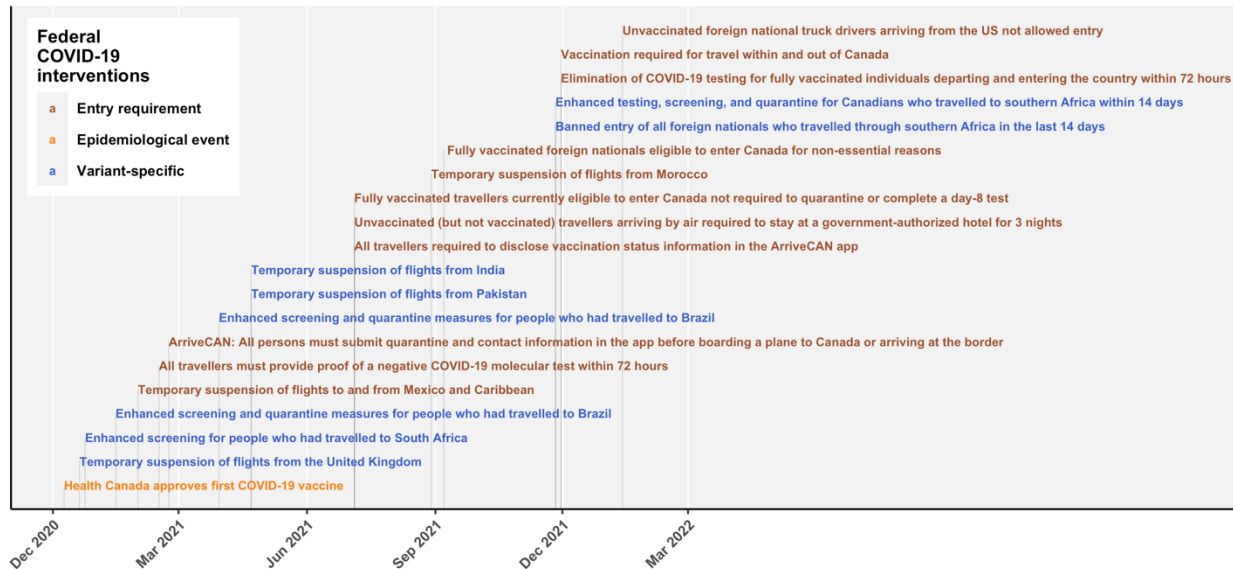
310  
 311 **Fig. S28. Omicron BA.1.1 sublineages and descendant cases averted. (A) Estimated average**  
 312 **daily Omicron cases in all of Africa. (B) Linear model fit to Omicron sublineages per week from**  
 313 **Africa versus average daily Omicron cases in Africa prior to restrictions, subset to greater than 10**  
 314 **cases. (C) Observed and predicted Omicron sublineages per week, adjusted by travel, from South**  
 315 **Africa over time. Model goodness-of-fit was improved by adjusting for travel volume. (D) Total**  
 316 **descendant cases averted across all averted sublineages.**

### 317 **Supplementary Text**

#### 318 Timeline of Canadian COVID-19 variant era restrictions

319 This timeline summarizes COVID-19 travel restrictions in Canada in the VOC era from November  
 320 2020 up to March 2022, including national entry requirements, epidemiological events, and  
 321 variant-specific travel restrictions (**Fig. S29**). Data was collated from a combination of resources,  
 322 including the Canadian Institute for Health Information (CIHI) (7), news releases from the  
 323 Government of Canada (cited throughout), and a timeline of Canada Border Services Agency  
 324 Border Measures (8). CIHI maintains a comprehensive list of federal, provincial and territorial  
 325 government interventions, announcements and other measures to reduce the spread of and improve  
 326 the health outcomes related to COVID-19. In the main text, we focus only upon variant-specific  
 327 travel restrictions for Alpha, Beta, Gamma, Delta, and Omicron (**Fig. 29C**).  
 328





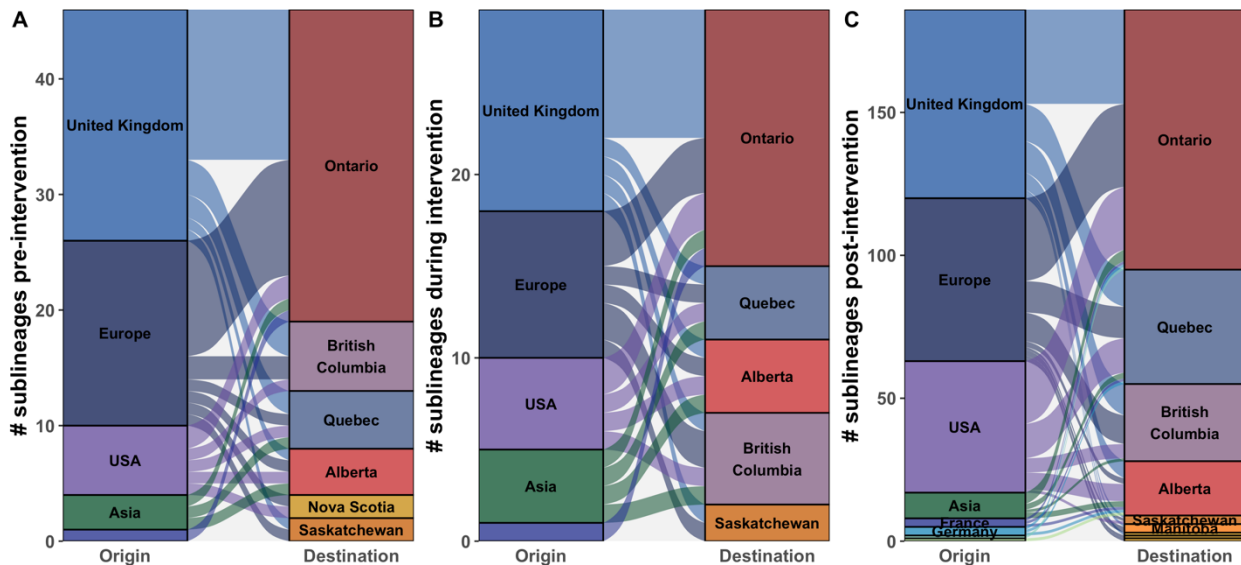
329  
 330 **Fig. S29.** Timeline of Canadian federal COVID-19 travel restrictions, including entry  
 331 requirements and variant-specific enhanced screening or entry bans, between November 2020 and  
 332 March 2022.

333  
 334 A synopsis of the timing of entry requirements, epidemiological events, and variant-specific  
 335 measures in Canada towards reducing the importation and burden of VOCs.

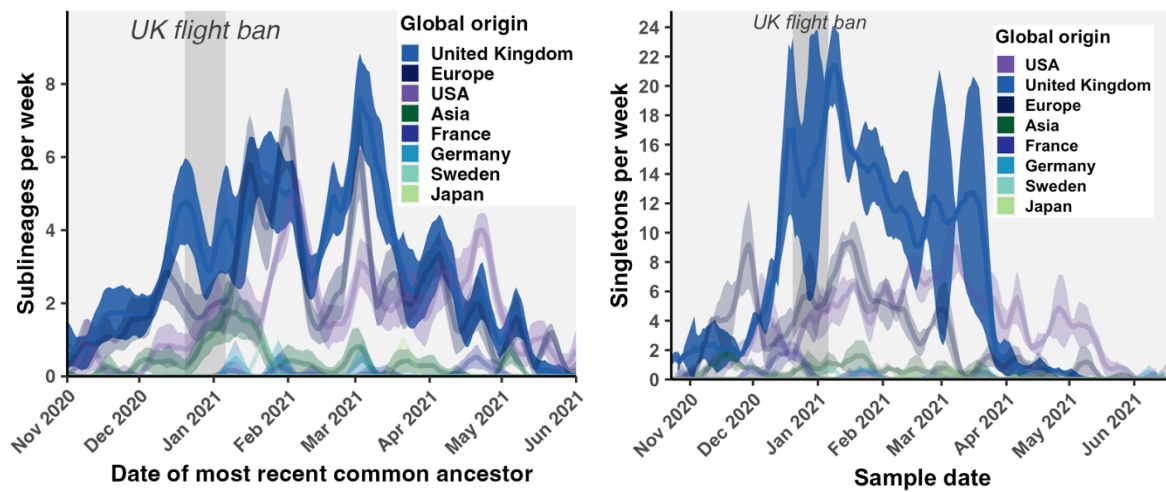
- 336 • December 9, 2020 – Health Canada approves first COVID-19 vaccine.
- 337 • December 20, 2020 – January 6, 2021: Flight ban for flights arriving from the United  
 338 Kingdom in response to the Alpha variant.
- 339 • December 24, 2020 – February 22, 2021, enhanced screening for arrivals from South  
 340 Africa in response to the Beta variant.
- 341 • As of February 15, 2021, foreign nationals arriving from the US must provide proof of a  
 342 valid COVID-19 molecular test from less than 72 hours before or prior positive COVID-  
 343 19 molecular test taken between 14-90 days before entry into Canada (9).
- 344 • As of February 22, 2021, all persons arriving by air or land must submit quarantine and  
 345 contact information electronically on the ArriveCAN app before boarding a plane to  
 346 Canada or arriving at the border with limited exceptions (9).
- 347 • On June 21, 2021 it was announced that beginning July 5, 2021, only unvaccinated  
 348 travellers arriving by air would be required to stay at a government-authorized hotel for  
 349 three nights, but not vaccinated travellers (6).
- 350 • Effective July 5, 2021, fully vaccinated travellers eligible to enter Canada will not be  
 351 required to quarantine while they await their on-arrival test result or complete a day-8 test.  
 352 At any time after entry to Canada, if a fully vaccinated traveller tests positive or are  
 353 exposed, local public health requirements, including quarantine or isolation, apply.
- 354 • On November 19, 2021, Transport Canada announced, effective of November 30, 2021,  
 355 the elimination of COVID-19 testing for fully vaccinated individuals departing and

356 entering the country within 72 hours; expanded the list of accepted vaccines for the purpose  
357 of travel; valid COVID-19 tests no longer accepted as an alternative to vaccination for  
358 travel within Canada; new requirements for all exempt essential travellers, including the  
359 mandate to identify their vaccination status in ArriveCAN. Vaccination still required for  
360 travel within and out of Canada (10).

- 361 • January 13, 2022, effective January 15, PHAC announced Canadian truck drivers who were  
362 not fully vaccinated would not be denied entry into Canada, but unvaccinated or partially  
363 vaccinated foreign national truck drivers coming to Canada from the US by land would not  
364 be allowed entry.
- 365 • February 14, 2022, federal government invoked the Emergency Act to disperse 2022  
366 Freedom Convoy - a protest of truckers and other anti-COVID-19 mandate supporters who  
367 occupied the capital for three weeks and blocked at least two major international borders.
- 368 • February 15, 2022, as of February 28, there would be easing of on-arrival testing for fully-  
369 vaccinated travellers with random testing and no quarantine required while awaiting test  
370 results (11).
- 371 • Study period end; data download date: March 22, 2022.
- 372 • April 1, 2022, fully vaccinated travellers were no longer required to provide a pre-entry  
373 COVID-19 test result to enter Canada by air, land or water; unvaccinated must continue to  
374 provide a COVID-19 test result (12).
- 375 • April 25, 2022, border measures eased: unvaccinated/partially vaccinated children  
376 accompanied by a fully vaccinated guardian no longer required to complete a pre-entry  
377 COVID-19 test; fully vaccinated travellers no longer need to provide a quarantine plan;  
378 fully vaccinated travellers no longer have to wear a mask in public spaces, monitor or report  
379 symptoms, quarantine if a traveller in their group shows symptoms, or maintain a list of  
380 close contacts and locations visited. Passengers still required to use ArriveCAN (13).
- 381 • October 1, 2022, the arriveCAN program ended and all entry requirements were dissolved.  
382 Vaccination, negative test, arriveCAN, or masking no longer required for all travellers  
383 entering Canada by air, land or marine mode.



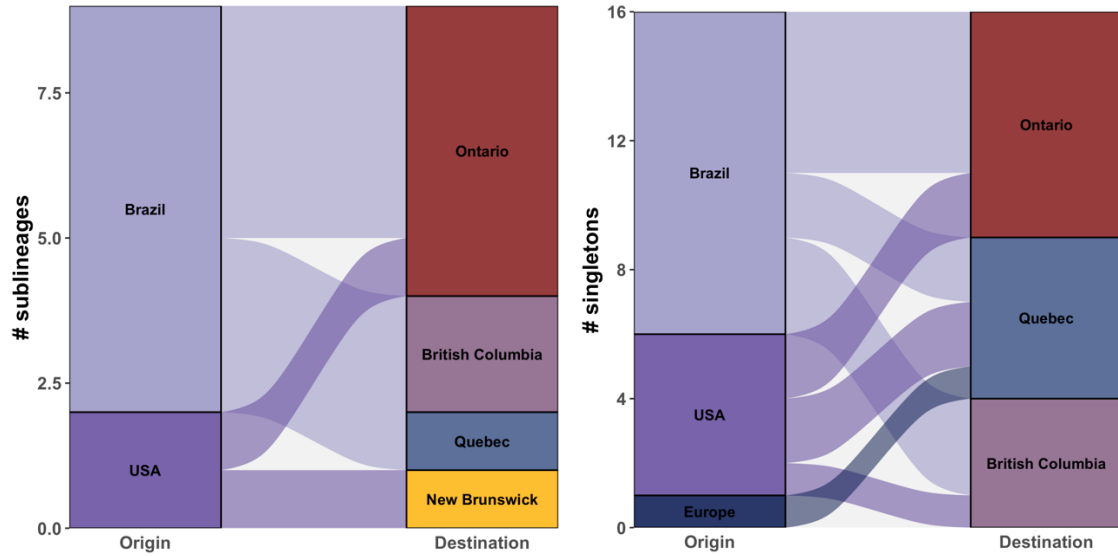
386 **Fig. S30.** Relative contributions of global origins and Canadian destinations to Alpha variant.  
 387 sublineage importations into Canada (A) before, (B) during, and (C) after the UK flight ban.



388 **Fig. S31.** Alpha sublineages and singletons imported per week colored by global origins, in  
 389 the context of the UK flight ban. Ribbons denote 95% confidence intervals across 10 bootstraps.  
 390

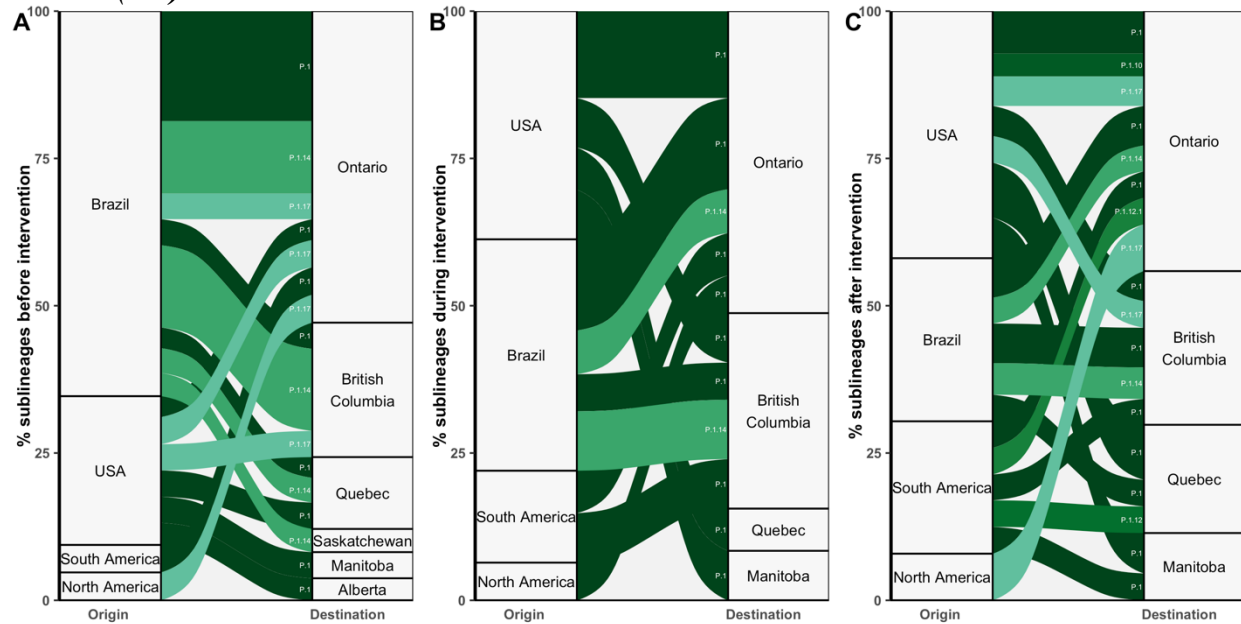
391 **Zeta (P.2)**

392 The second variant to be identified in Canada on November 24, 2020 was Zeta (P.2, alias:  
 393 B.1.1.28.2), which was closely related to the Gamma variant and initially identified in Brazil as  
 394 early as April 2020. The majority of Zeta sublineages and singletons introduced to Canada were  
 395 imported from Brazil, with smaller contributions from the USA and Europe (Fig. S32).

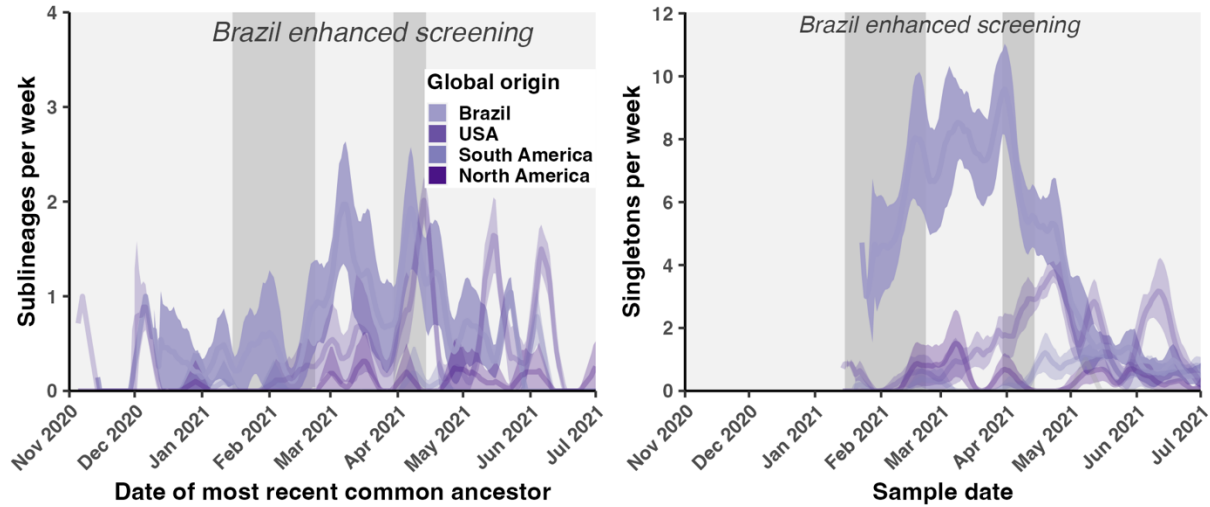


396  
397 **Fig. S32. Zeta (P.2) sublineage and singleton flows.**

398  
399 **Gamma (P.1)**



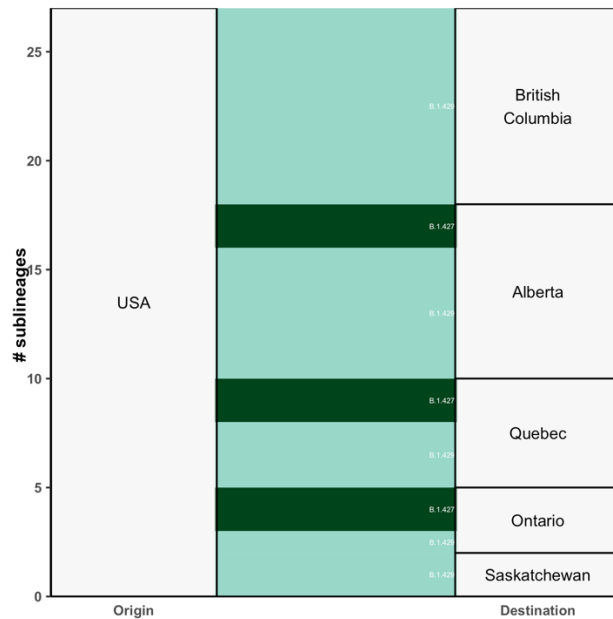
400  
401 **Fig. S33. Relative flows of Gamma sublineages from global origins to Canadian provinces**  
402 **before, during, and after the Brazil enhanced screening restriction. Flows are grouped by**  
403 **Pango lineage.**



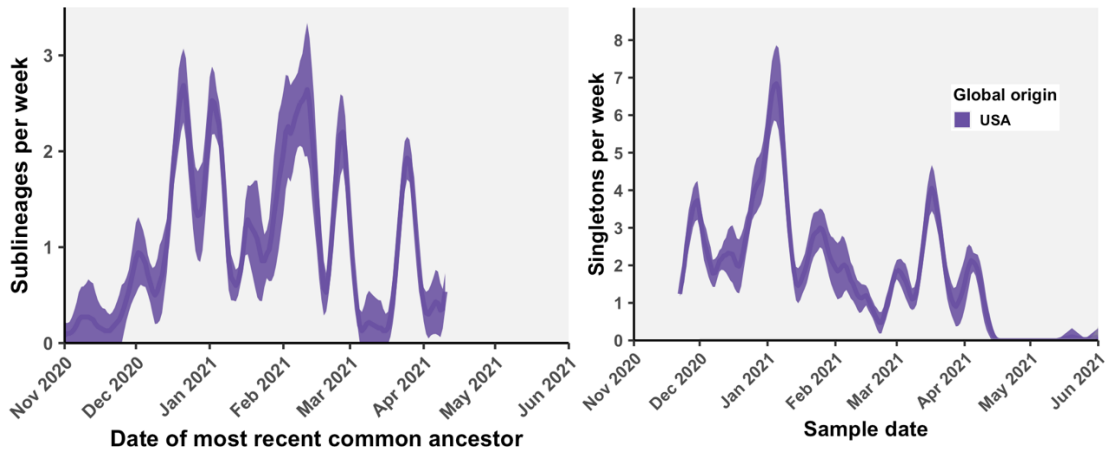
404  
405 **Fig. S34. Gamma sublineages and singletons introduced per week over time.**  
406

407 ***Epsilon (B.1.427, B.1.429)***

408 Epsilon consists of Pango lineages, B.1.429 and B.1.427, both of which were first detected in  
409 California, USA, with earliest sample date for B.1.427 in April 2020 and B.1.429 in January 2020  
410 according to cov-lineages.org (**Table S1**). The first detection in Canada was on December 5 2020.  
411 Our analysis suggests that Canada had 21 (20-22) B.1.429 and 6 (5-6) B.1.427 sublineages  
412 introduced between October 9, 2020 and April 12, 2021 (**Figs. S35-36**). All sublineages were  
413 inferred to have USA origins across all bootstraps.  
414



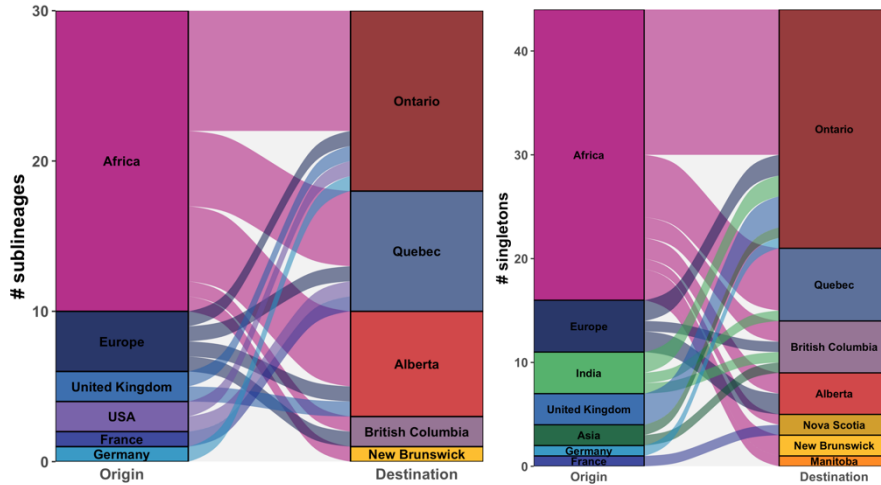
415  
416 **Fig. S35. Epsilon sublineage flows grouped by Pango lineage.**



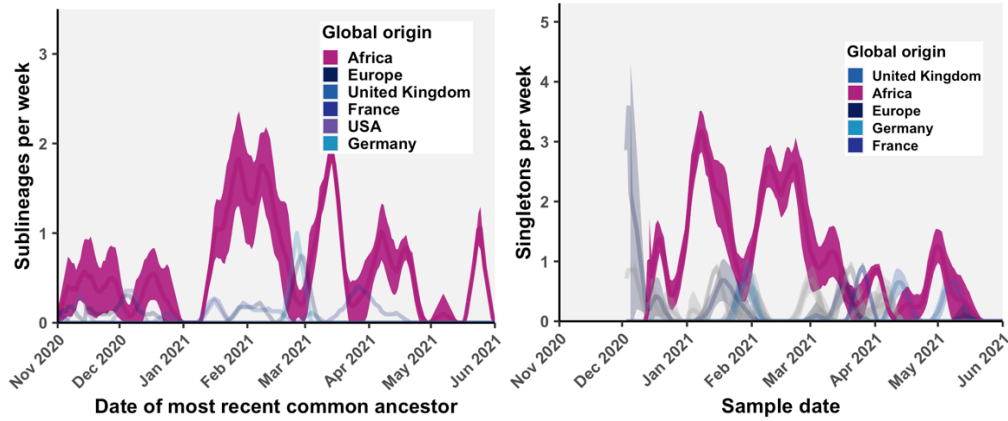
417  
 418 **Fig. S36. Epsilon sublineages and singletons per week by global region of origin.**  
 419

420 ***Eta (B.1.525)***

421 The Eta variant was first detected in the UK and Nigeria (**Table S1**). We estimated there were 24  
 422 (23 - 24) Eta sublineages imported into Canada between October 2020 and July 2021, resulting in  
 423 1762 (1759 - 1764) descendants sampled in Canada. There were additionally 38 (36 - 41) Eta  
 424 singletons introduced into Canada, accounting for 62% (60-63) of all Eta introductions.

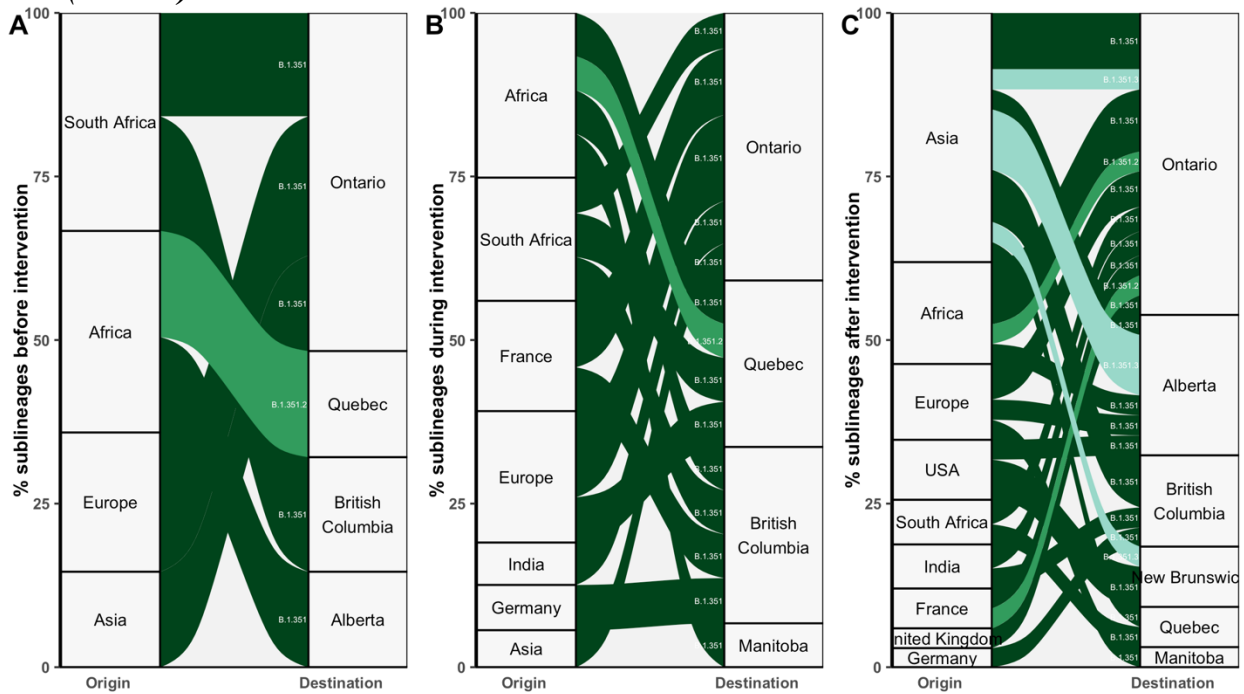


425 **Fig. S37. Eta sublineage and singleton flows.**

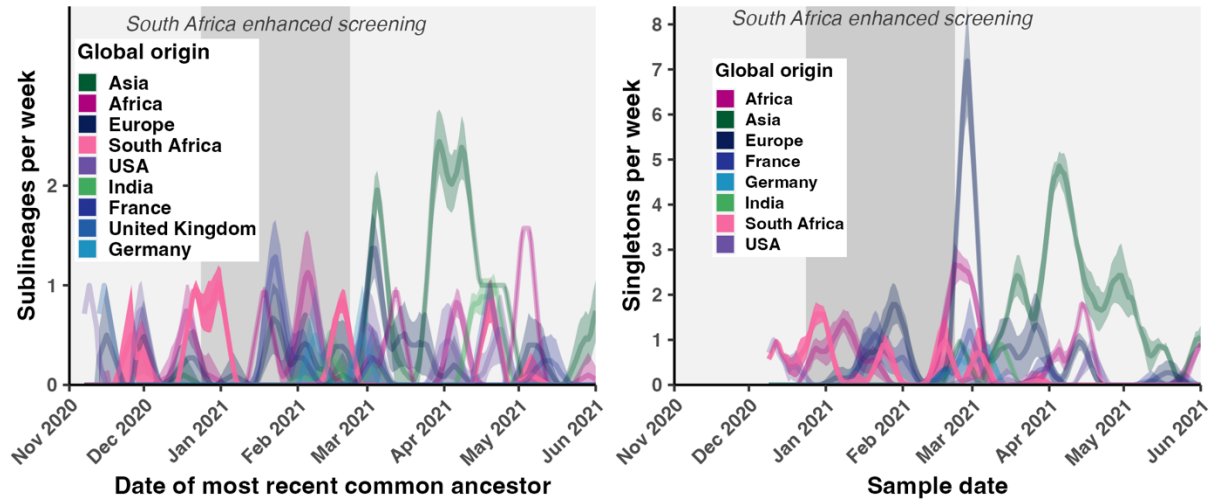


426  
427 **Fig. S38. Eta sublineages and singletons over time.**

428  
429 **Beta (B.1.351)**



430  
431 **Fig. S39. Beta sublineage flows, grouped by Pango lineage, before, during, and after the**  
432 **enhanced screening period for South Africa.**

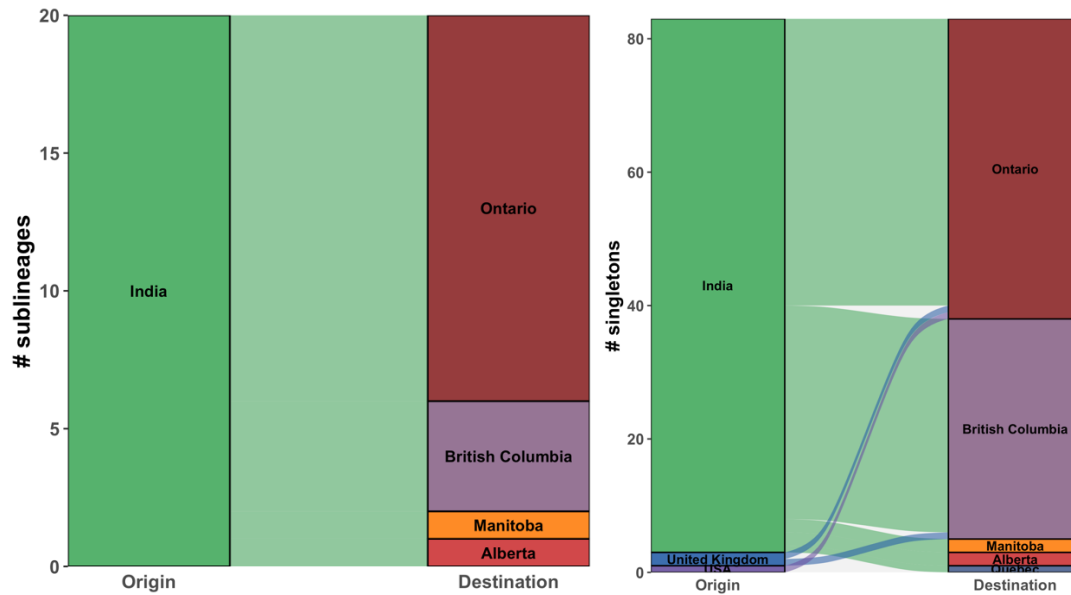


433  
434 **Fig. S40. Beta sublineages and singletons imported per week into Canada.**

435  
436 ***Kappa (B.1.617.1)***

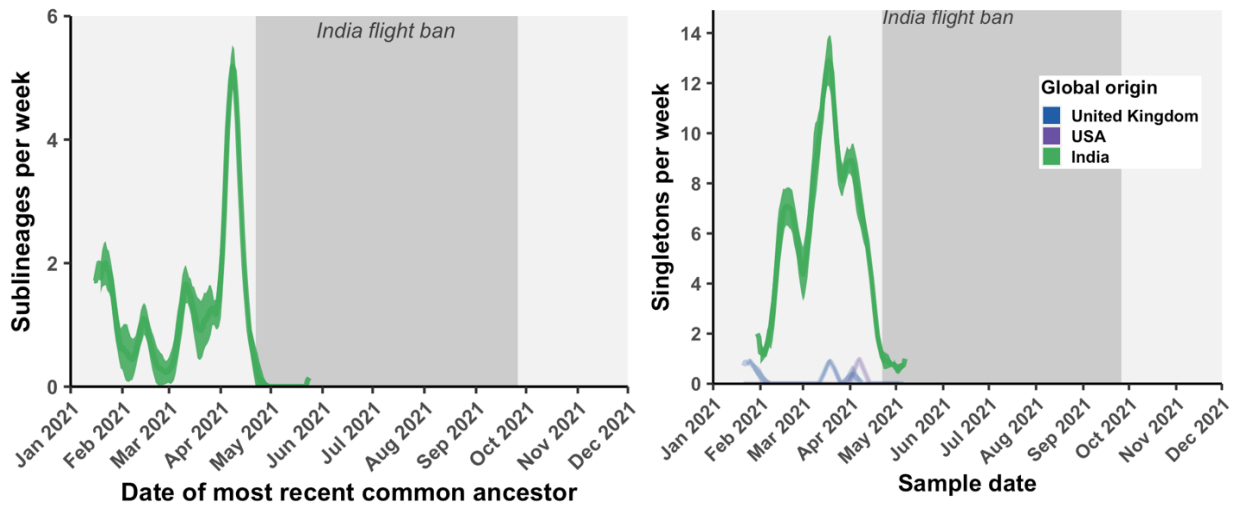
437 Kappa was a sister lineage to Delta (B.1.617.2) identified in India around the same time. We  
438 estimated there were 21 (20 - 21) Kappa sublineages and 81 (81 - 82) singletons.

439  
440



441  
442 **Fig. S41. Kappa sublineage and singleton flows into Canada.**

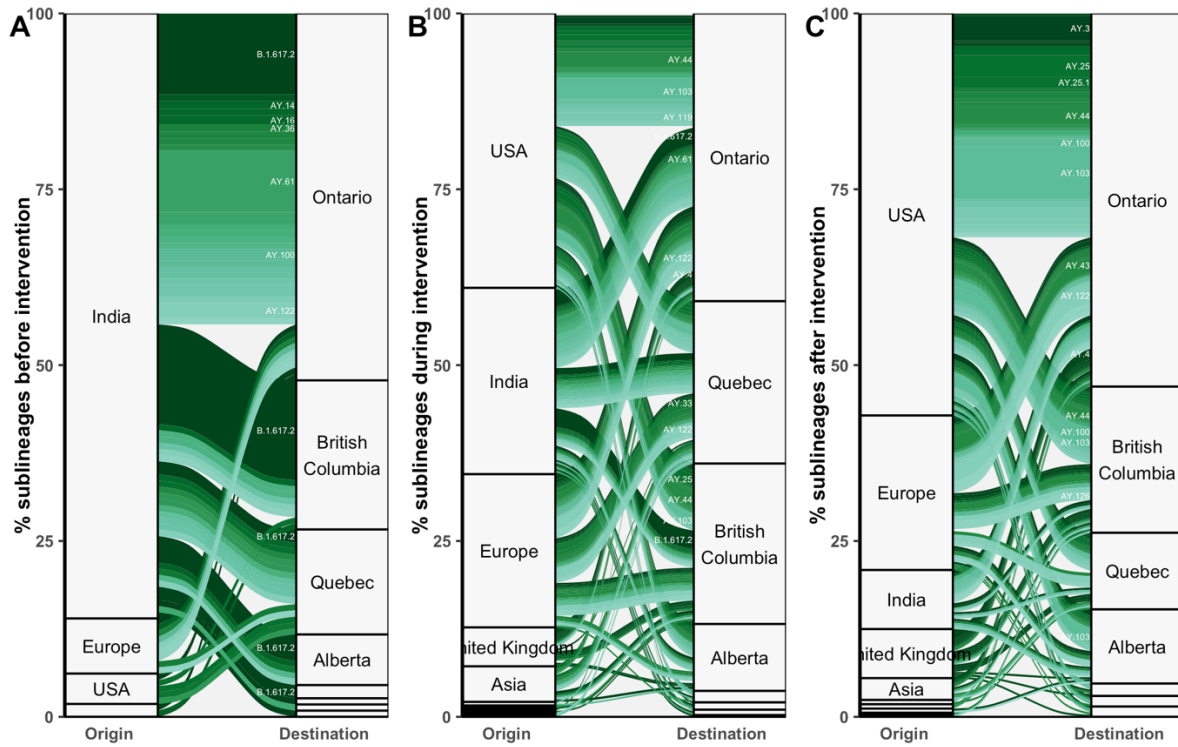




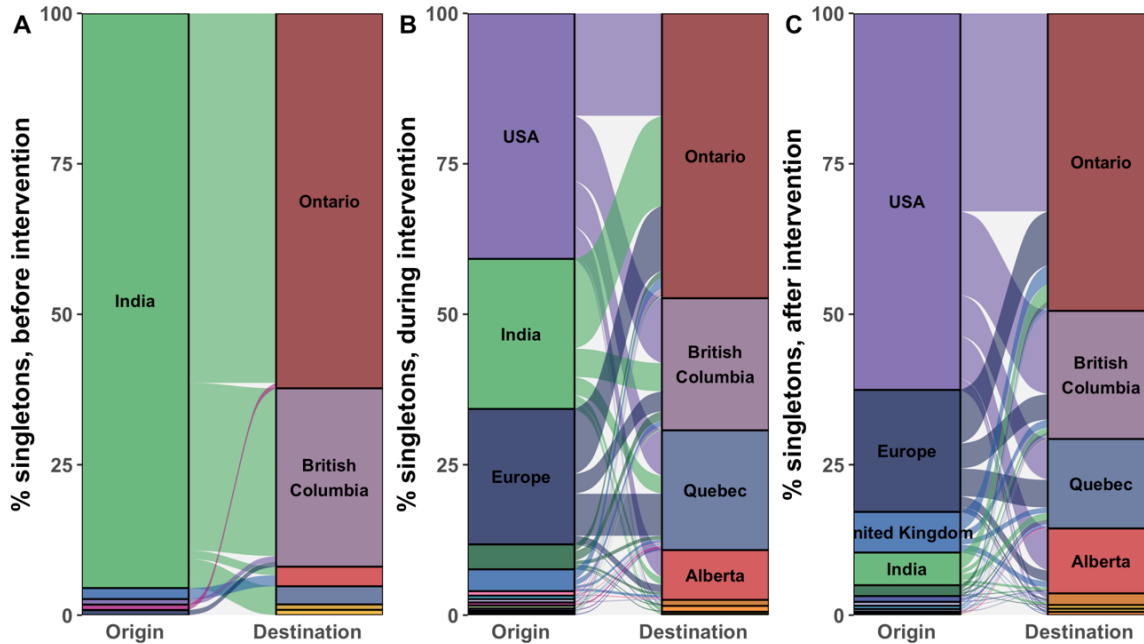
443  
 444 **Fig. S42. Kappa sublineages and singletons imported per week into Canada in the context of**  
 445 **the Delta-associated India flight ban.**  
 446

447  
 448  
 449  
 450  
 451  
 452  
 453  
 454  
 455  
 456  
 457  
 458  
 459  
 460  
 461  
 462  
 463  
 464  
 465  
 466  
 467  
 468  
 469  
 470  
 471

472 *Delta*

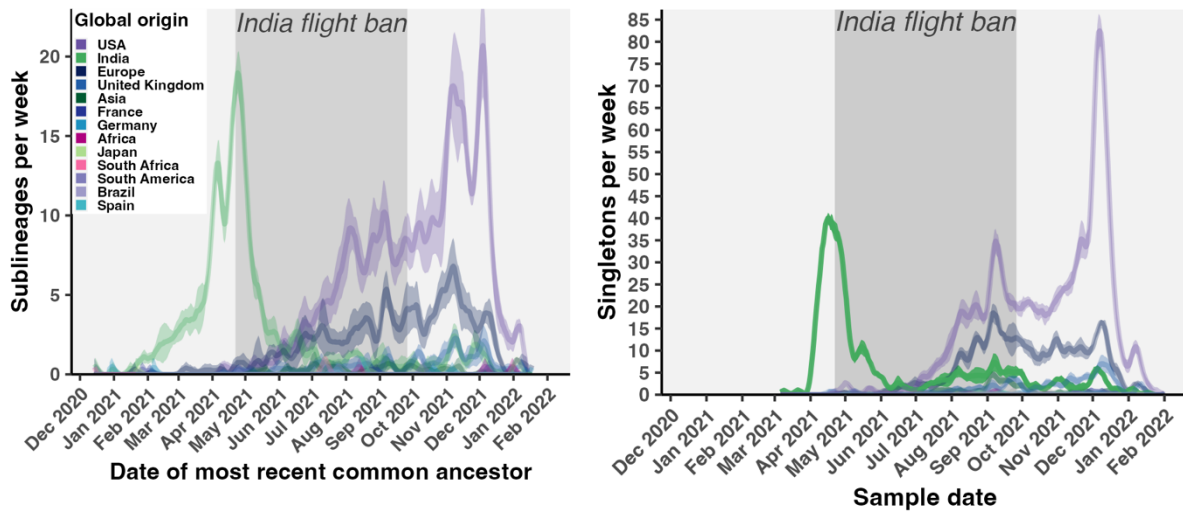


473  
 474 **Fig. S43. Relative contributions of global regions to Delta sublineages introduced to Canada**  
 475 **(A) before, (B) during, and (C) after the flight ban intervention.** Sublineage flows are grouped  
 476 and colored by Pango lineage.



477 **Fig. S44. Relative contributions of global regions to Delta singletons introduced to Canada**  
 478 **(A) before, (B) during, and (C) after the flight ban intervention.** Sublineage flows are colored  
 479 by global origin.

480

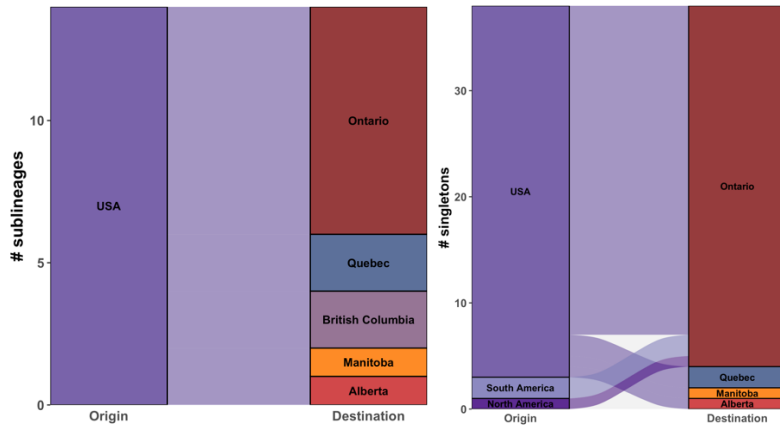


481 **Fig. S45. Delta sublineages and singletons introduced per week by global origin.**

482

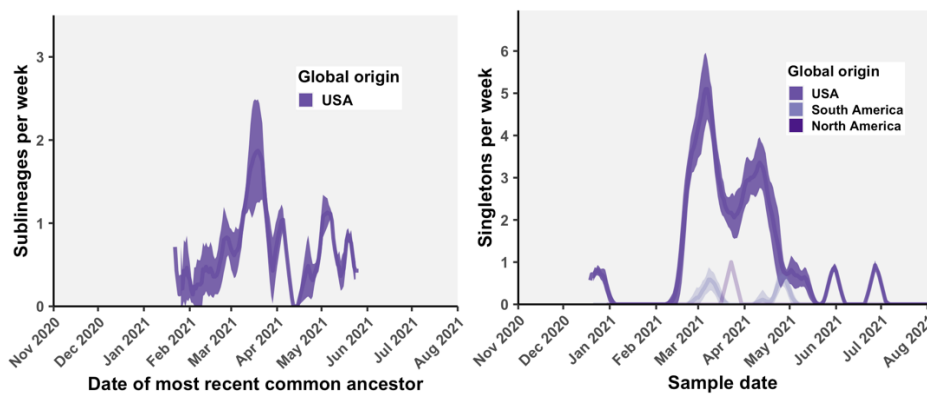
483 ***Iota (B.1.526)***

484 Iota was first identified in New York in early 2020. We inferred 14 (13 - 14) unique Iota  
 485 sublineages and 37 (36 - 38) singletons introduced to Canada, almost entirely from the USA and  
 486 primarily into Ontario.



487 **Fig. S46. Iota sublineage and singleton flows.**

488



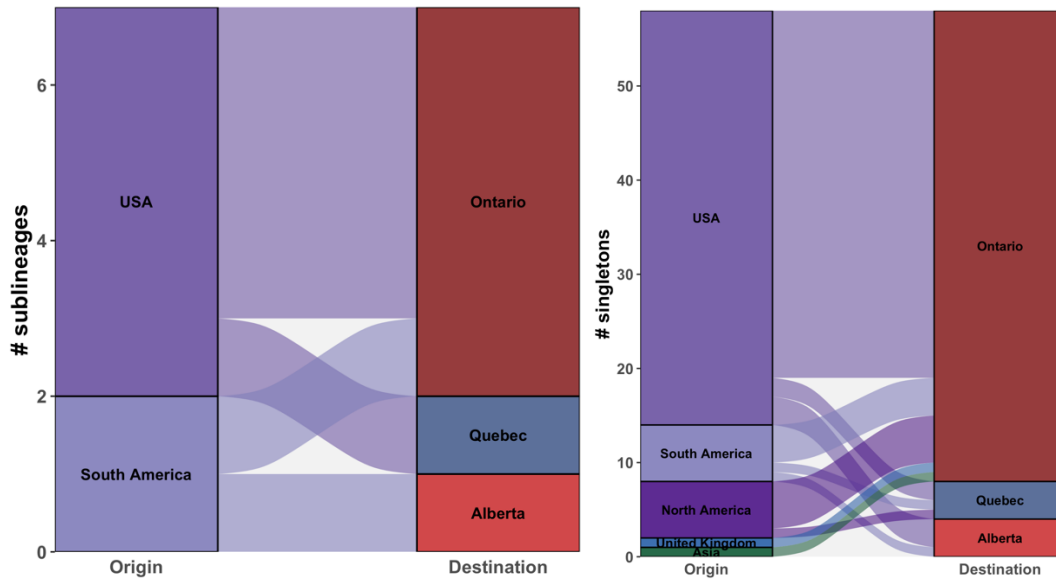
489 **Fig. S47. Iota sublineages and singletons introduced per week.**

490

491  
492  
493  
494  
495  
496  
497  
498

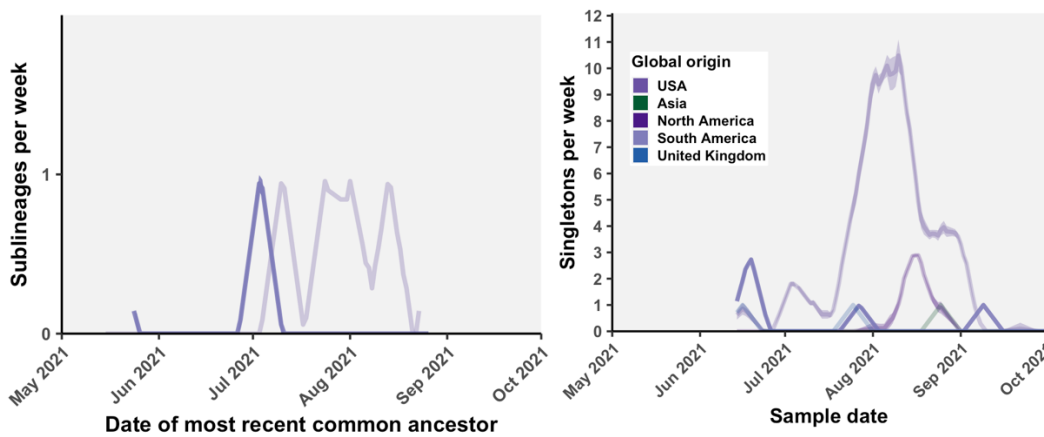
**Mu (B.1.621)**

Mu was first identified in Colombia in December 2020 and first sampled in Canada in June 2021 (Table S1). There were at least 7 (7-7) Mu sublineages introduced to Canada and 55 (54 - 55) singletons. Despite its first discovery in Colombia, 72% of Mu sublineages and 79% of singletons were inferred to have come from the USA, with 28% of sublineages and 11% of singletons from South America. Sequences from the USA comprised 45.1% of global sequences sampled, while 39.8% were from South America.



499  
500

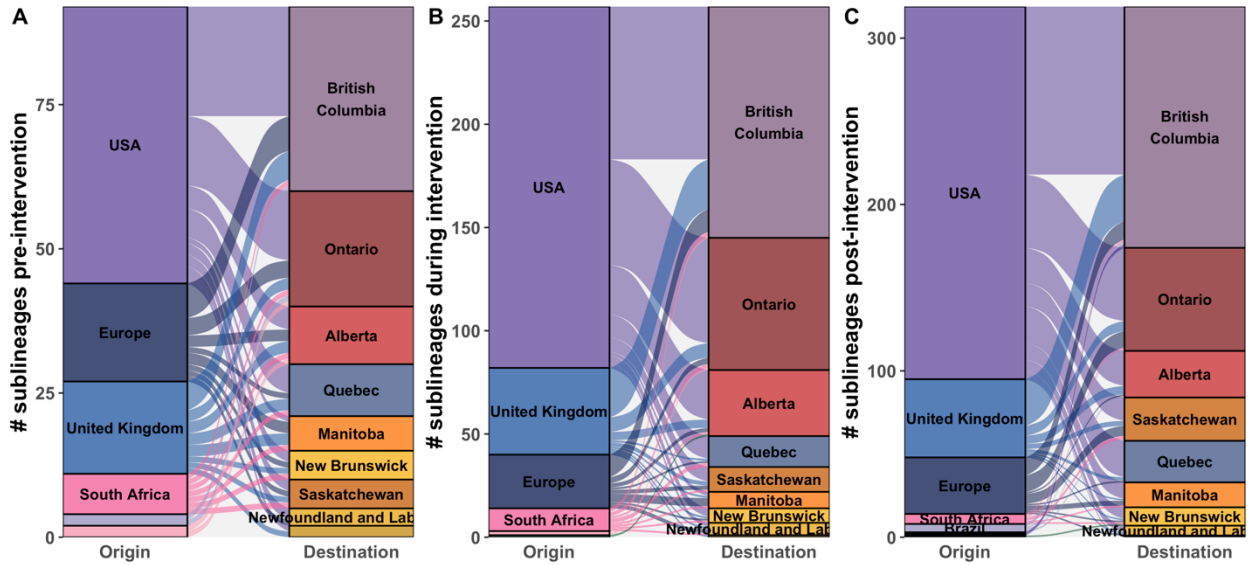
**Fig S48. Mu sublineage and singleton flows into Canada.**



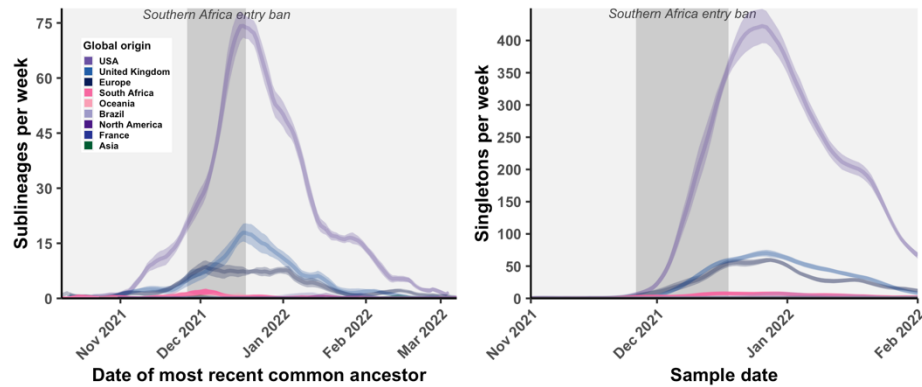
501  
502  
503

**Fig. S49. Mu sublineages and singletons imported per week into Canada.**

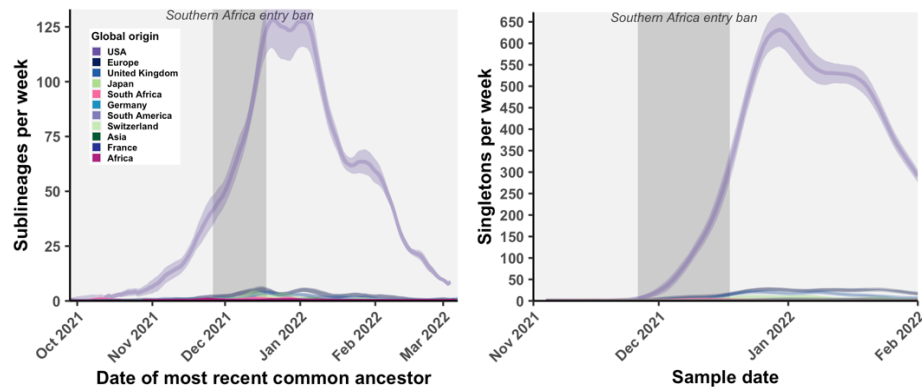
504 **Omicron (B.1.1.529; BA. \*)**



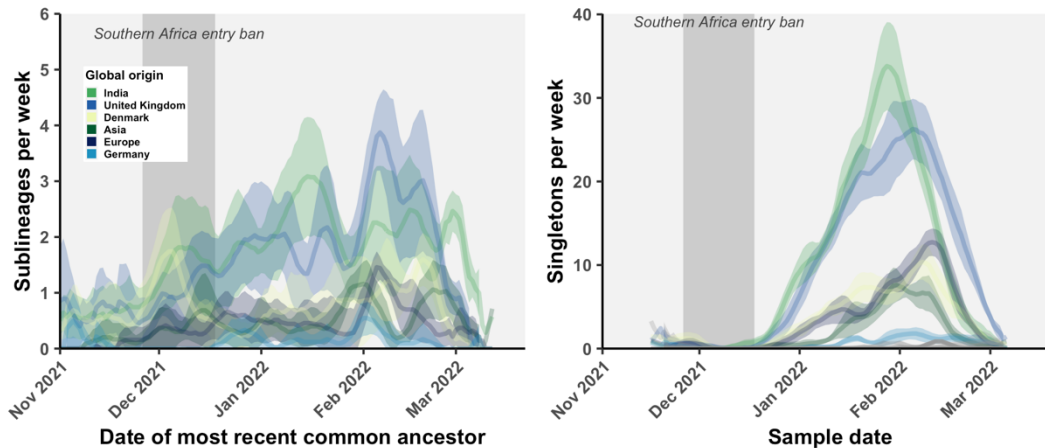
505 **Fig. S50. Relative contributions of global regions to BA.1 sublineages (A) before, (B) during,**  
 506 **(C) and after the travel restrictions.**



507 **Fig. S51. BA.1 sublineages and singletons introduced per week, in the context of the southern**  
 508 **Africa entry ban and enhanced screening intervention.**



509 **Fig. S52. BA.1.1 sublineages and singletons introduced per week, in the context of the**  
 510 **southern Africa entry ban and enhanced screening intervention.**  
 511



512 **Fig. S53. BA.2 sublineages and singletons introduced per week, in the context of the southern**  
 513 **Africa entry ban and enhanced screening intervention.**

514

515 **References**

516

517 1. Public Health Agency of Canada, “Coronavirus disease 2019 (COVID-19): Epidemiology  
 518 update” (Government of Canada, Ottawa, ON, 2021), [https://health-infobase.canada.ca/covid-](https://health-infobase.canada.ca/covid-19/epidemiological-summary-covid-19-cases.html?stat=num&;measure=active#a2)  
 519 [19/epidemiological-summary-covid-19-cases.html?stat=num&;measure=active#a2](https://health-infobase.canada.ca/covid-19/epidemiological-summary-covid-19-cases.html?stat=num&;measure=active#a2).

520 2. Statistics Canada, 2021 Census Population and dwelling counts: Canada, provinces and  
 521 territories (2022), (available at  
 522 <https://www150.statcan.gc.ca/t1/tb11/en/tv.action?pid=9810000101>).

523 3. M. D. Figgins, T. Bedford, SARS-CoV-2 variant dynamics across US states show consistent  
 524 differences in effective reproduction numbers, *Medrxiv* [Preprint] (2022)  
 525 doi:10.1101/2021.12.09.21267544.

526 4. A. McLaughlin, V. Montoya, R. L. Miller, G. J. Mordecai, C. C.-19 G. N. (CanCOGen)  
 527 Consortium, M. Worobey, A. F. Poon, J. B. Joy, Genomic epidemiology of the first two waves  
 528 of SARS-CoV-2 in Canada. *eLife*. **11**, e73896 (2022).

529 5. Statistics Canada, Leading indicator, International visitors entering or returning to Canada by  
 530 air, by country of residence and traveller type (2023), <https://doi.org/10.25318/2410005601-eng>.

531 6. Public Health Agency of Canada, Government of Canada’s first phase to easing border  
 532 measures for travellers entering Canada (2021), [https://www.canada.ca/en/public-](https://www.canada.ca/en/public-health/news/2021/06/government-of-canadas-first-phase-to-easing-border-measures-for-travellers-entering-canada3.html)  
 533 [health/news/2021/06/government-of-canadas-first-phase-to-easing-border-measures-for-](https://www.canada.ca/en/public-health/news/2021/06/government-of-canadas-first-phase-to-easing-border-measures-for-travellers-entering-canada3.html)  
 534 [travellers-entering-canada3.html](https://www.canada.ca/en/public-health/news/2021/06/government-of-canadas-first-phase-to-easing-border-measures-for-travellers-entering-canada3.html).

535 7. Canadian Institute for Health Information, COVID-19 Intervention Timeline in Canada - Data  
 536 Tables (2021), <https://www.cihi.ca/en/covid-19-intervention-timeline-in-canada>.

- 537 8. Government of Canada, Timeline – CBSA Border Measures (2021),  
538 <https://www.publicsafety.gc.ca/cnt/trnsprnc/brfng-mtrls/prlmntry-bndrs/20211015/08-en.aspx>.
- 539 9. Government of Canada, Current travel restrictions—Standing Committee on Health:  
540 Emergency Situation Facing Canadians in Light of the COVID-19 Pandemic (2021),  
541 [https://www.cbsa-asfc.gc.ca/transparency-transparence/pd-dp/bbp-rpp/hesa/2021-05-](https://www.cbsa-asfc.gc.ca/transparency-transparence/pd-dp/bbp-rpp/hesa/2021-05-21/travrestrict-restrictvoya-eng.html)  
542 [21/travrestrict-restrictvoya-eng.html](https://www.cbsa-asfc.gc.ca/transparency-transparence/pd-dp/bbp-rpp/hesa/2021-05-21/travrestrict-restrictvoya-eng.html).
- 543 10. Public Health Agency of Canada, Adjustments to Canada’s border and travel measures  
544 (2021), [https://www.canada.ca/en/public-health/news/2021/11/adjustments-to-canadas-border-](https://www.canada.ca/en/public-health/news/2021/11/adjustments-to-canadas-border-and-travel-measures.html)  
545 [and-travel-measures.html](https://www.canada.ca/en/public-health/news/2021/11/adjustments-to-canadas-border-and-travel-measures.html).
- 546 11. Public Health Agency of Canada, Government of Canada lightens border measures as part of  
547 transition of the pandemic response (2022), [https://www.canada.ca/en/public-](https://www.canada.ca/en/public-health/news/2022/02/government-of-canada-lightens-border-measures-as-part-of-transition-of-the-pandemic-response.html)  
548 [health/news/2022/02/government-of-canada-lightens-border-measures-as-part-of-transition-of-](https://www.canada.ca/en/public-health/news/2022/02/government-of-canada-lightens-border-measures-as-part-of-transition-of-the-pandemic-response.html)  
549 [the-pandemic-response.html](https://www.canada.ca/en/public-health/news/2022/02/government-of-canada-lightens-border-measures-as-part-of-transition-of-the-pandemic-response.html).
- 550 12. Public Health Agency of Canada, Government of Canada will remove pre-entry test  
551 requirements for vaccinated travellers on April 1 (2022), [https://www.canada.ca/en/public-](https://www.canada.ca/en/public-health/news/2022/03/government-of-canada-will-remove-pre-entry-test-requirement-for-fully-vaccinated-travellers-on-april-1.html)  
552 [health/news/2022/03/government-of-canada-will-remove-pre-entry-test-requirement-for-fully-](https://www.canada.ca/en/public-health/news/2022/03/government-of-canada-will-remove-pre-entry-test-requirement-for-fully-vaccinated-travellers-on-april-1.html)  
553 [vaccinated-travellers-on-april-1.html](https://www.canada.ca/en/public-health/news/2022/03/government-of-canada-will-remove-pre-entry-test-requirement-for-fully-vaccinated-travellers-on-april-1.html).
- 554 13. Public Health Agency of Canada, Government of Canada announces additional easing of  
555 border measures effective April 25 (2022), [https://www.canada.ca/en/public-](https://www.canada.ca/en/public-health/news/2022/04/government-of-canada-announces-additional-easing-of-border-measures-effective-april-25.html)  
556 [health/news/2022/04/government-of-canada-announces-additional-easing-of-border-measures-](https://www.canada.ca/en/public-health/news/2022/04/government-of-canada-announces-additional-easing-of-border-measures-effective-april-25.html)  
557 [effective-april-25.html](https://www.canada.ca/en/public-health/news/2022/04/government-of-canada-announces-additional-easing-of-border-measures-effective-april-25.html).
- 558