

1 **Light at night and modeled circadian disruption predict higher risk of mortality: A**
2 **prospective study in >88,000 participants**

3 Daniel P. Windred¹, Angus C. Burns^{1,2}, Jacqueline M. Lane²⁻⁴, Patrick Olivier⁵, Martin K. Rutter^{6,7}, Richa Saxena²⁻
4 ⁴, Andrew J. K. Phillips^{1*}, & Sean W. Cain^{1*}

5

6 **Affiliation / Institution:**

7 ¹Turner Institute for Brain and Mental Health, School of Psychological Sciences, Faculty of Medicine, Nursing
8 and Health Sciences, Monash University, Melbourne, VIC, Australia

9 ²Center for Genomic Medicine, Massachusetts General Hospital, Boston, MA, USA

10 ³Department of Anesthesia, Critical Care and Pain Medicine, Massachusetts General Hospital and Harvard
11 Medical School, Boston, MA, USA

12 ⁴Division of Sleep and Circadian Disorders, Brigham and Women's Hospital, Boston, MA, USA

13 ⁵Action Lab, Department of Human-Centred Computing, Faculty of Information Technology, Monash
14 University, Melbourne, VIC, Australia

15 ⁶Centre for Biological Timing, Division of Endocrinology, Diabetes & Gastroenterology, School of Medical
16 Sciences, Faculty of Biology, Medicine and Health, Manchester Academic Health Science Centre, University of
17 Manchester, Manchester, UK

18 ⁷Diabetes, Endocrinology and Metabolism Centre, NIHR Manchester Biomedical Research Centre, Manchester
19 University NHS Foundation Trust, Manchester, UK.

20

21 *Authors contributed equally to this manuscript.

22 **Corresponding Author:** Sean W. Cain

23 sean.cain@monash.edu

24 **Key Points**

25 **Question:** Is light exposure at night associated with risk of premature mortality?

26 **Findings:** Exposure to brighter light at night, recorded with personal light sensors in >88,000 participants, was
27 associated with higher risk of mortality across a subsequent 6-year period. Computational modeling indicated
28 that disrupted circadian rhythms may explain this higher mortality risk.

29 **Meaning:** Avoiding light at night may be a cost-effective and accessible recommendation for promoting health
30 and longevity.

31 **Abstract**

32 **Importance:** Light at night disrupts human circadian rhythms, which are critical for maintaining optimal health.
33 Circadian disruption accompanies poor health outcomes that precede premature mortality, including
34 cardiometabolic diseases. However, links between personal night light exposure and premature mortality risk
35 have not been established.

36 **Objective:** To characterize the association of light at night with all-cause and cardiometabolic mortality risks and
37 to understand the role of circadian disruption in these associations by applying a computational model of the
38 response of the human circadian pacemaker to light.

39 **Design:** Prospective cohort study.

40 **Setting:** United Kingdom.

41 **Participants:** UK Biobank cohort, N=88,904, aged 62.4±7.8 years, 57% female.

42 **Exposure:** Participants wore activity tracking watches with light sensors for one week between 2013-2016.
43 Twenty-four-hour light exposure profiles were extracted for each participant, and day-time and night-time hours
44 were defined by factor analysis. A validated mathematical model of the human circadian pacemaker was applied
45 to model circadian amplitude and phase from weekly light data.

46 **Main Outcome:** Cause-specific mortality (National Health Service) recorded in 2,605 participants across a mean
47 (±SD) follow-up period of 6.31±0.83 years after light/activity tracking.

48 **Results:** Risk of all-cause mortality was higher in participants in the 90th-100th percentiles of night-light exposure
49 (HR[95%CI]=1.30[1.15-1.48]), and for those between the 70th-90th percentiles (HR=1.16[1.04-1.28]), compared
50 to the darkest 50%. Participants in the 90th-100th percentiles of night-light exposure also had higher risk of
51 cardiometabolic mortality (HR=1.41[1.07-1.85]). Higher circadian amplitude predicted lower risks of all-cause
52 mortality (HR = 0.94[0.91-0.97] per SD) and cardiometabolic mortality (HR=0.90[0.83-0.96]), and circadian phase
53 that deviated from the group average predicted higher risks of all-cause mortality (HR=1.33[1.17-1.51]) and
54 cardiometabolic mortality (HR=1.48[1.12-1.97]). These findings were robust to adjustment for age, sex, ethnicity,
55 and sociodemographic and lifestyle factors.

- 56 **Conclusions and Relevance:** Minimizing exposure to light at night and keeping regular light-dark patterns that
57 enhance circadian rhythms may promote cardiometabolic health and longevity.

58 Introduction

59 Circadian rhythm disruption accompanies a wide range of adverse health outcomes¹⁻³ that contribute to
60 premature mortality. Light exposure at night disrupts circadian rhythms by shifting the timing (phase-shift) and
61 weakening the signal (amplitude suppression) of the central circadian pacemaker in the hypothalamus⁴⁻⁶, which
62 orchestrates circadian rhythms throughout the body.^{7,8} Experimental exposure to light at night causes
63 premature mortality in animal models.^{9,10} Human populations who are more likely to be exposed to light at night,
64 including rotating shift-workers,¹¹ evening types,¹² and those with fragmented activity patterns^{13,14} have higher
65 risks of premature mortality. Furthermore, population-scale studies have linked outdoor light at night with
66 higher risk of all-cause mortality¹⁵ and coronary heart disease,¹⁶ using satellite data. However, the relationship
67 between objective individual-level light exposure patterns and risk of all-cause mortality in humans has not been
68 investigated.

69 Circadian disruption leads to cardiometabolic dysfunction and morbidity, which increase mortality risk.¹⁷
70 Experimental disruption of circadian rhythms alters blood glucose, insulin, cortisol, leptin, arterial pressure, and
71 energy expenditure.¹⁸ Myocardial infarction, stroke, hypertension, diabetes, and metabolic syndrome have
72 higher incidence in rotating shift-workers.¹⁹⁻²² Cardiovascular risk factors, metabolic syndrome, and high BMI are
73 also more often observed in evening types.¹⁸ In animal models, disruption of circadian rhythms with light
74 produces profound cardiovascular disease, causing premature death due to cardiomyopathy, extensive fibrosis,
75 and severely impaired contractility.²³ However, no large-scale study has examined associations of individual-
76 level light exposure with risk for premature mortality by cardiometabolic causes.

77 We characterized the association of light at night with all-cause and cardiometabolic mortality risk in ~87,000
78 UK Biobank participants, using 14 million hours of data from wrist-worn light sensors. We also examined the
79 association of circadian disruption with mortality using a validated computational model of the human circadian
80 system, which allowed us to estimate an individual's circadian phase and amplitude.

81 **Methods**

82 **Overview**

83 Approximately 502,000 UK Biobank participants aged between 40-69 years were recruited between 2006-
84 2010.²⁴ From this cohort, 103,669 participants wore Axivity AX3 devices (Axivity, Newcastle upon Tyne, UK) on
85 their dominant wrist for 7 days under free-living conditions (2013-2016). Devices were distributed and returned
86 by post. Light and accelerometer data were logged at 100Hz. Devices contained an APDS9007 silicon photodiode
87 light sensor that responded to a spectral range similar to the human eye (peak sensitivity wavelength of 560nm).
88 We tested a sample of Axivity AX3 devices under reference lighting conditions, confirming an approximately
89 linear response to illuminance between 0-5500 lx. See Supplementary S1, S4, S5 and S10 for additional detail on
90 protocol and device testing.

91 Mortality data were received by the UK Biobank from NHS Digital (England) and NHS Central Register (Scotland).
92 Records included date of death and primary cause of death, diagnosed according to the ICD-10. Death records
93 between June 2013 and March 2021 were included in analyses.

94 Cardiometabolic mortality was defined as any cause of death corresponding to ICD-10 diseases of the circulatory
95 system, or endocrine and metabolic diseases. Predominant circulatory causes of death were ischemic heart
96 disease (I20-I25), cerebrovascular diseases (I60-I69), other heart disease (I30-I52), diseases of the arteries,
97 arterioles, and capillaries (I70-I79), and hypertensive diseases (I10-I15). Predominant endocrine and metabolic
98 causes of death were diabetes mellitus (E10-E14), metabolic disorders (E70-E90), and obesity (E65-E68).

99 The UK Biobank has ethical approval from the North West Multi-centre Research Ethics Committee
100 (<https://www.ukbiobank.ac.uk/learn-more-about-uk-biobank/about-us/ethics>).

101 **Light exposure profiles**

102 Light data were cleaned based on accelerometer data to ensure light recordings corresponded to when devices
103 were on-wrist. Device non-wear was determined by GGIR, a validated package for estimating sleep-wake state
104 from accelerometer data, as reported previously.²⁵⁻²⁷ Participants had a median (IQR) of 6.90 (5.95-6.96) days of

105 light data remaining after exclusion of epochs coinciding with non-wear. Participants with no valid days detected
106 by GGIR were excluded, due to non-wear or data corruption (8,004 of 103,669).

107 Daily profiles of light exposure were extracted for each participant by grouping weekly light data into forty-eight
108 half-hour clock time intervals across 24 h (e.g., 00:00 to 00:30 across 7 days). We excluded participants with low
109 quality light data reflecting device malfunction, or insufficient data in any of the forty-eight half-hour intervals
110 (<60 of 210 possible minutes of cumulative light data across the week; 6,761 of 95,665 participants excluded).
111 Daily light profiles representing all 24 h clock times remained in 88,904 participants. Factor analysis was applied
112 to daily profiles, extracting a two-factor structure of day light (07:30-20:30) and night light (00:30-06:00; see
113 Supplementary Appendix S10).

114 **Covariates**

115 Physical activity was included as the acceleration average across each weekly recording, as derived in previous
116 work.²⁸ Additional covariates were collected between 2006-2010, including self-reported ethnic background,
117 employment status, yearly household income, Townsend Deprivation Index, weekly social activities, frequency
118 of social visits, smoking status, urbanicity, and rotating shift-work status. Cardiometabolic risk factors included
119 BMI, hypertension, cholesterol ratio (total cholesterol/HDL), diabetes diagnosis, and history of vascular
120 conditions. Sleep duration was calculated using GGIR, a validated package for estimating sleep-wake state from
121 accelerometer data, as reported previously.²⁵⁻²⁷ See Supplementary Appendix S2, S3, and S10 for detailed
122 descriptions of covariates.

123 **Statistical analysis**

124 Light data were split into four percentile groupings: 0-50% (referent group), 50-70%, 70-90%, and 90-100%. The
125 0-50th percentiles were grouped due to minimal variability in their average light intensity at night, and this group
126 were hypothesized to have the lowest risk of mortality. Hazard ratios for all-cause and cause-specific mortality
127 were estimated using Cox proportional hazards models and competing-risks proportional sub-hazards models.²⁹
128 Time since light/activity recording was used as the timescale and all models were adjusted for participant age.
129 Relationships between light exposure and mortality were assessed using two approaches: (i) models including
130 night and day light factors together, to assess night light/mortality relationships while adjusting for day light

131 exposure, and (ii) models assessing the time-of-day relationship between light exposure and mortality,
132 consisting of 48 models corresponding to half-hour clock time intervals, adjusted for multiple comparisons using
133 a Bonferroni correction ($p < .001$). Two hierarchical model levels were implemented: Model 1 (minimally-adjusted)
134 included age, sex, and ethnicity, and Model 2 (fully-adjusted) was additionally adjusted for physical activity,
135 employment, income, deprivation, social activities, social visits, smoking status, urbanicity, and shift work status.
136 Secondary analyses included: (i) an assessment of the temporal stability of light exposure patterns in 2,998
137 participants with up to four repeated light/activity recordings each, across seasons, (ii) addition of baseline
138 cardiometabolic health factors including diabetes diagnosis, vascular events, BMI, hypertension, and cholesterol
139 ratio to fully-adjusted models, and (iii) assessment of the mediating role of night light in the relationship between
140 short sleep duration and mortality risk (see Supplementary Appendix S7-9, and S11).

141 **Circadian rhythm modeling**

142 To model circadian amplitude and phase, weekly light data were input to a mathematical model³⁰ that
143 approximates the response of human photoreceptors (represented by a dynamic stimulus processor) and the
144 central circadian pacemaker (represented by a limit cycle oscillator) to light exposure. This model has been
145 applied in a wide range of populations and is the best existing method for predicting the state of the human
146 circadian clock from light data.³¹ In the model, light modulates pacemaker phase and amplitude in a time- and
147 state- dependent manner. Light near the middle of the biological night suppresses amplitude, while light in the
148 early and late biological night delays and advances phase, respectively. See Supplementary S10 for model
149 equations and implementation. Amplitude was calculated at each epoch. Mean, minimum, and maximum
150 amplitudes were calculated over this time series (approximately 7 days) for each participant. Phase (predicted
151 time of core body temperature minimum) was calculated for each ~24 h cycle. Mean and standard deviation of
152 phase across the week were calculated for each participant. Amplitude metrics and phase variability were z-
153 scored and included as continuous predictors of all-cause, cardiometabolic, and non-cardiometabolic mortality
154 across two levels of Cox proportional hazards and sub-hazards models as described above. Mean phase was split
155 into quintiles to account for the circular nature of the data. The 40-60th percentile group was centered at
156 participant's circular mean phase (03:50) and was used as a referent group in Cox proportional hazards models.

157 **Results**

158 **Descriptive statistics**

159 Our final analyses included 88,904 participants with complete daily light profiles. Mean follow up period was
160 6.31±0.83 years between light/activity recording and study endpoint (21st March, 2021), and total follow-up
161 period was 7.8 years. All-cause mortality rate was 4.64 deaths per 1000 person-years, including 2,605 all-cause
162 and 539 cardiometabolic deaths. Participants were 62.4±7.8 years, 57.0% female, 97.0% white ethnicity, 62.1%
163 employed, 8.0% shift-workers, and had median income range £31,000-51,999, Townsend deprivation score of -
164 1.76±2.80, ≥1 weekly social activities experienced by 72.8%, social visits most commonly experienced weekly
165 (36.3%), 6.8% current and 36.1% previous smokers, 84.1% from an urban postcode, and average physical activity
166 of 28.2±8.1 milli-g across weekly recordings (see Table 1). All-cause, cardiometabolic, and non-cardiometabolic
167 deaths for light exposure percentile groups are detailed in Table 2, alongside approximate ranges of light
168 intensity for each group. The distribution of approximate light intensity across 24 h is provided in Supplementary
169 S4.

Table 1. Descriptives statistics for participants grouped according to light intensity percentiles, and split by day and night light.

	Day light exposure percentile				Night light exposure percentile			
	0-50%	50-70%	70-90%	90-100%	0-50%	50-70%	70-90%	90-100%
Age								
M±SD	62.05±7.95	62.4±7.84	62.64±7.72	63.55±7.41	62.76±7.85	61.85±7.91	62.01±7.78	62.38±7.67
Range	43.62 - 79	43.55 - 78.69	43.53 - 78.84	43.5 - 78.47	43.5 - 78.88	43.53 - 79	43.69 - 78.76	43.84 - 78.41
Sex (% male, N)	42.24 (18774)	42.06 (7479)	43.41 (7718)	48.94 (4351)	41.29 (18353)	44.98 (7998)	44.71 (7949)	45.24 (4022)
Ethnicity (% white, N)	96.34 (42668)	96.98 (17191)	97.74 (17314)	98.68 (8750)	97.7 (43295)	96.72 (17134)	96.16 (17032)	95.56 (8462)
Physical activity								
M±SD	27.26±7.91	28.19±7.99	29.05±8.07	30.55±8.46	27.88±7.9	28.57±8.27	28.47±8.24	27.84±8.27
Range	5.12 - 69.28	4.94 - 67.94	6.46 - 69.41	4.83 - 67.35	4.83 - 69.21	6.46 - 69.28	5.88 - 69.2	5.12 - 69.41
Employment status (% employed, N)	63.86 (28201)	61.76 (10903)	60.7 (10720)	56.88 (5020)	59.67 (26359)	64.49 (11389)	65.03 (11474)	63.74 (5622)
Income bracket (M±SD, range 1-5)	2.86±1.17	2.86±1.16	2.89±1.16	2.9±1.15	2.86±1.15	2.88±1.17	2.9±1.17	2.86±1.19
Townsend Deprivation Index								
M±SD	-1.58±2.9	-1.78±2.76	-1.92±2.69	-2.25±2.44	-1.92±2.7	-1.69±2.82	-1.61±2.88	-1.39±2.99
Range	-6.26 - 10.46	-6.26 - 9.89	-6.26 - 9.89	-6.26 - 8.94	-6.26 - 10.46	-6.26 - 9.89	-6.26 - 9.99	-6.26 - 9.89
Social visits (M±SD, range 1-7)	5.16±1.12	5.19±1.1	5.21±1.09	5.23±1.09	5.18±1.1	5.18±1.12	5.19±1.11	5.17±1.14
Social activities (% >1 weekly, N)	72.08 (31972)	72.46 (12857)	73.58 (13062)	75.03 (6663)	72.66 (32249)	72.89 (12927)	73.35 (13014)	71.76 (6364)
Smoking								
% previous, N	35.15 (15579)	36.08 (6396)	36.87 (6539)	38.89 (3450)	34.76 (15408)	36.06 (6392)	37.92 (6725)	38.79 (3439)
% current, N	7.06 (3130)	7.03 (1247)	6.58 (1167)	5.78 (513)	5.44 (2411)	7.27 (1288)	8.18 (1451)	10.23 (907)
Urbanicity (% >10,000 population, N)	85.44 (36191)	84.1 (14633)	83.07 (14482)	79.29 (6926)	83.14 (35647)	83.69 (14380)	85.51 (14797)	86.46 (7408)
Shift work status (% shift workers, N)	8.54 (3767)	8.35 (1473)	7.32 (1293)	6.45 (569)	6.61 (2918)	8.84 (1560)	9.82 (1730)	10.15 (894)

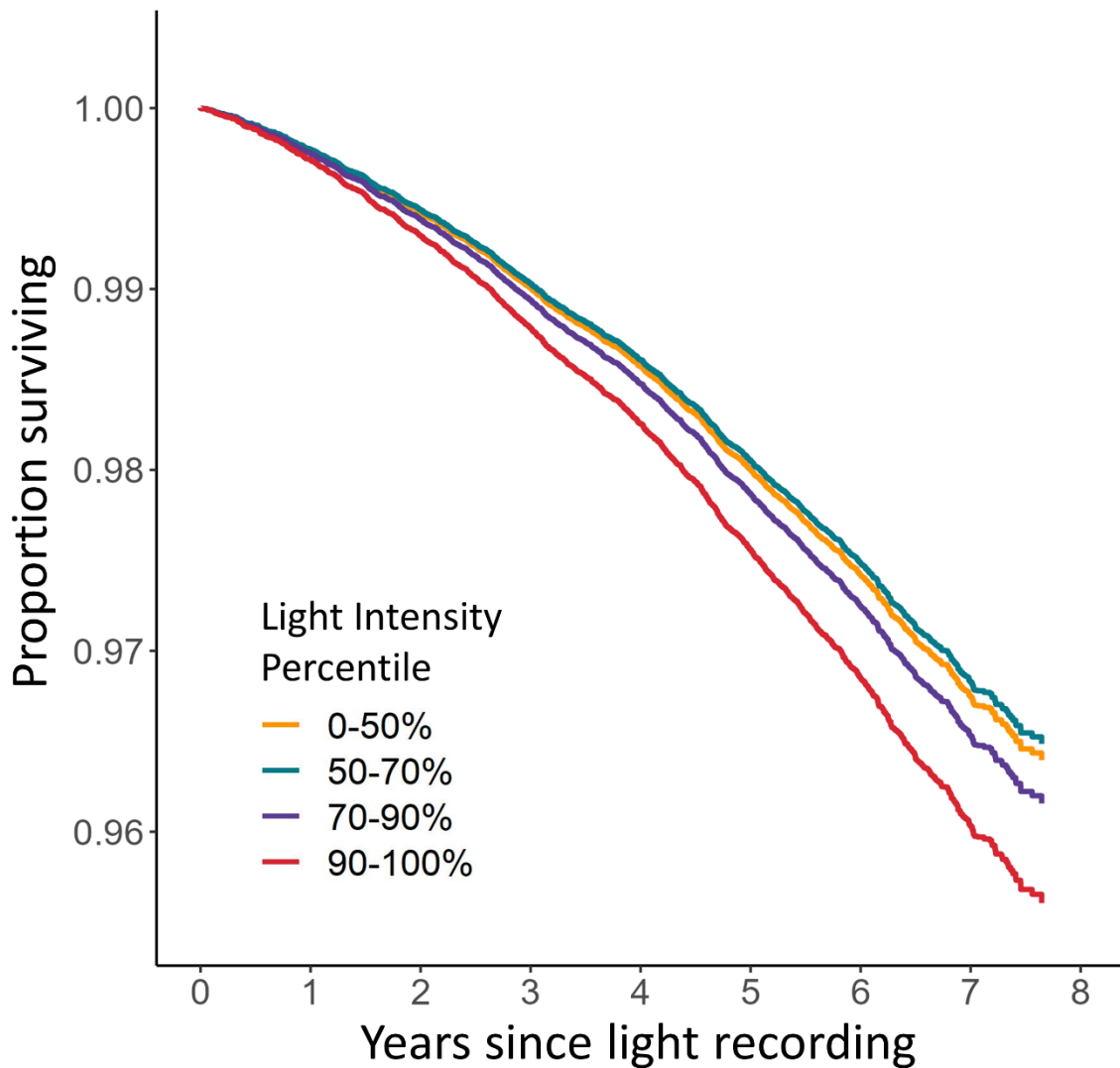
Table 2. Hazard ratios of all-cause and cause-specific mortality for minimally-adjusted Model 1 and fully-adjusted Model 2, alongside percentage and number of deaths, split by light exposure percentiles, and day vs. night.

		All-cause				Non-cardiometa bo lic		Cardiometa bo lic	
		Light intensity percentile	Light intensity range (lx)	% (N)	HR [95%CI]	% (N)	HR [95%CI]	% (N)	HR [95%CI]
Model 1 (minimally-adjusted) N = 88,599	Night	0-50% (ref.)	<1	2.83 (1252)	-	2.24 (991)	-	0.58 (255)	-
		50-70%	1 - 6	2.75 (488)	1.06[0.95-1.17]	2.17 (384)	1.05[0.93-1.18]	0.58 (103)	1.10[0.87-1.39]
		70-90%	6 - 48	3.05 (541)	1.16[1.04-1.28]**	2.42 (429)	1.15[1.03-1.29]**	0.63 (111)	1.17[0.94-1.47]
		90-100%	>48	3.49 (309)	1.30[1.15-1.48]***	2.72 (241)	1.27[1.10-1.47]***	0.76 (67)	1.41[1.07-1.85]**
	Day	0-50% (ref.)	<991	2.98 (1321)	-	2.33 (1032)	-	0.64 (282)	-
		50-70%	991 - 1750	2.88 (510)	0.92[0.83-1.02]	2.34 (415)	0.96[0.85-1.07]	0.53 (94)	0.80[0.63-1.01]*
		70-90%	1750 - 3140	2.79 (494)	0.85[0.77-0.95]**	2.18 (387)	0.86[0.76-0.97]**	0.60 (106)	0.86[0.69-1.08]
		90-100%	>3140	2.99 (265)	0.78[0.68-0.89]***	2.38 (211)	0.81[0.69-0.94]**	0.61 (54)	0.73[0.54-0.98]*
Model 2 (fully-adjusted) N = 75,921	Night	0-50% (ref.)	<1	2.76 (1041)	-	2.18 (824)	-	0.56 (212)	-
		50-70%	1 - 6	2.71 (412)	1.06[0.94-1.19]	2.09 (318)	1.01[0.89-1.16]	0.61 (93)	1.16[0.91-1.49]
		70-90%	6 - 48	3.07 (472)	1.15[1.02-1.28]*	2.43 (374)	1.15[1.02-1.30]*	0.63 (97)	1.20[0.94-1.54]
		90-100%	>48	3.40 (258)	1.20[1.04-1.38]*	2.65 (201)	1.15[0.98-1.35]*	0.74 (56)	1.30[0.95-1.76]*
	Day	0-50% (ref.)	<991	2.94 (1104)	-	2.28 (853)	-	0.65 (245)	-
		50-70%	991 - 1750	2.79 (426)	0.94[0.84-1.05]	2.29 (349)	1.00[0.88-1.13]	0.50 (76)	0.76[0.59-0.99]*
		70-90%	1750 - 3140	2.72 (420)	0.94[0.83-1.05]	2.13 (329)	0.95[0.83-1.08]	0.58 (90)	0.91[0.71-1.16]
		90-100%	>3140	3.02 (233)	0.98[0.85-1.13]	2.41 (186)	1.02[0.86-1.20]	0.61 (47)	0.88[0.63-1.21]

* $p < .05$, ** $p < .01$, *** $p < .001$. Model 1 was adjusted for age, sex, and ethnicity. Model 2 was adjusted for age, sex, ethnicity, physical activity, socioeconomic status, social visits, smoking status, urbanicity, and shift work.

172 **Brighter light at night predicted higher risk of all-cause mortality**

173 Exposure to the brightest 10% of night light (00:30 to 06:00) was associated with higher risk of all-cause mortality
174 (minimally-adjusted: HR[95%CI]=1.30[1.15-1.48], $p<.001$, fully-adjusted: HR=1.20[1.04-1.38], $p=.01$) when
175 compared to exposure to the dimmest night light (0-50th percentiles; Table 2; Figure 1). Exposure to night light
176 between the 70-90th percentiles was also associated with higher all-cause mortality risk (minimal: HR=1.16[1.04-
177 1.28]; $p=.005$, full: HR=1.15[1.02-1.28], $p=.02$), but exposure between the 50-70th percentiles was not. Light
178 exposure during the day (07:30-20:30) was associated with lower risk of all-cause mortality in the minimal model,
179 for the brightest 10% (HR=0.78[0.68-0.89], $p<.001$) and between the 70-90th percentiles (HR=0.85[0.77-0.95],
180 $p=.003$). Day light did not significantly predict mortality risk in fully-adjusted models. Exposure to night light
181 between the 70-90th and 90-100th percentiles were significant predictors of higher mortality risk after additional
182 adjustments for baseline cardiometabolic risk factors, including diabetes diagnosis, vascular diagnoses (heart
183 attack, stroke, angina), hypertension, and high BMI in fully-adjusted models (see Supplementary S7). Mediation
184 models indicated that short sleep duration (<6 h) was a significant predictor of higher all-cause mortality risk
185 (total effect: HR=1.33[1.18-1.49], $p<.001$), and that light at night was a significant partial mediator of this
186 relationship between short sleep duration and all-cause mortality (direct effect: HR=1.27[1.12-1.44], $p<.001$;
187 indirect effect: HR=1.04[1.00-1.09], $p=.04$; see Supplementary S11).



188

189 **Figure 1.** Survival of participants across 7.8 years for 0-50%, 50-70%, 70-90%, and 90-100% light intensity
190 groups, adjusted for age, sex, and ethnicity.

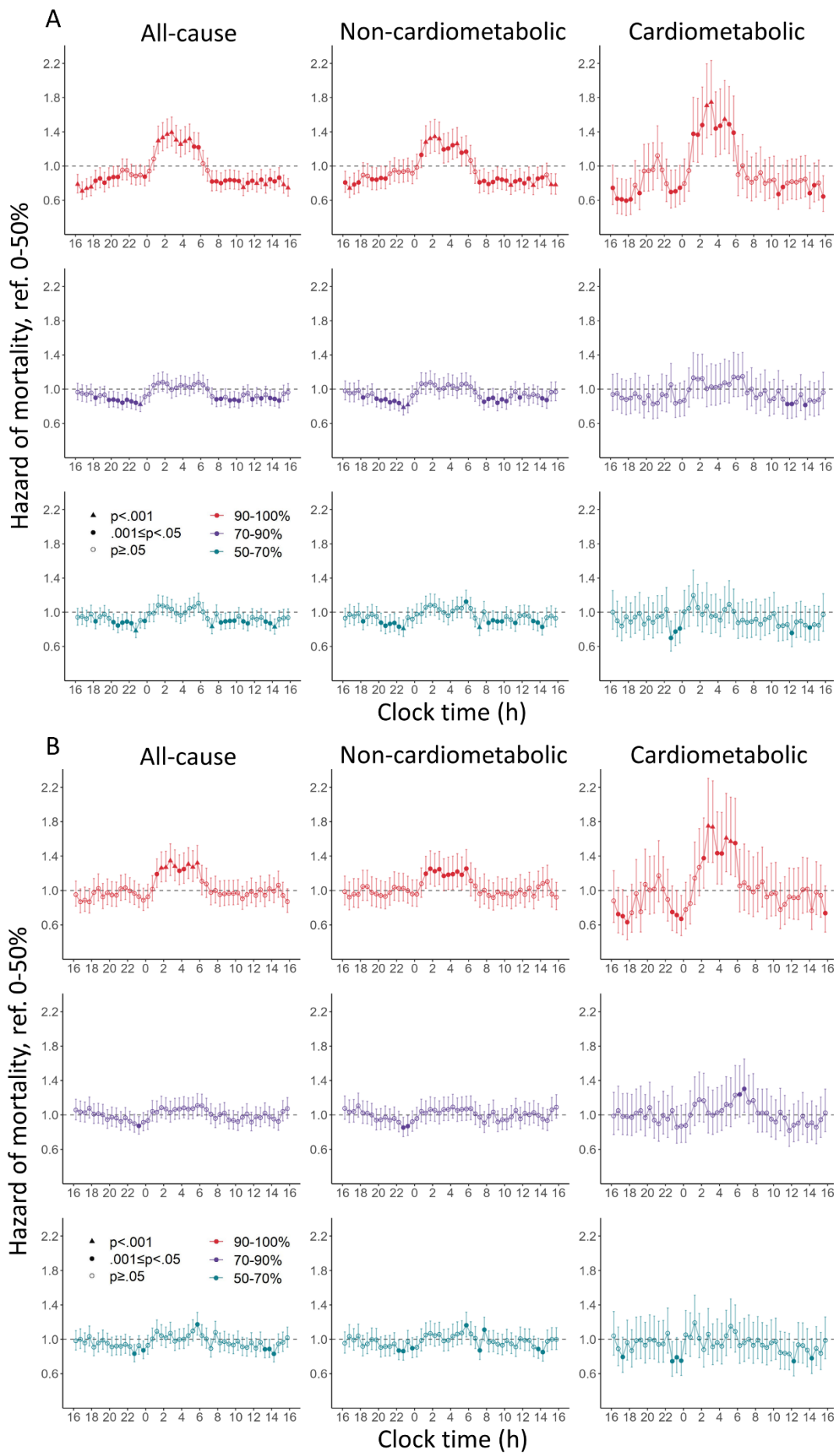
191 **Light at night and risk of cardiometabolic and non-cardiometabolic mortality**

192 Exposure to the brightest 10% of night light was associated with higher risk of death from cardiometabolic causes
193 when compared to exposure to the dimmest night light (0-50th percentiles; Table 2; Figure 1; minimal:
194 HR[95%CI]=1.41[1.07-1.85], p=.007; full: HR=1.30[0.95-1.76], p=.05). The brightest 10% also had a higher risk of
195 non-cardiometabolic mortality (minimal: HR=1.27[1.10-1.47], p<.001; full: HR=1.15[0.98-1.35], p=.05). Exposure
196 to night light between the 70-90th percentiles was associated with higher non-cardiometabolic mortality risk
197 (minimal: HR=1.15[1.03-1.29], p=.008; full: HR=1.15[1.02-1.30], p=.02) but not higher cardiometabolic mortality
198 risk. Exposure to night light between the 50-70th percentiles was not associated with cardiometabolic or non-
199 cardiometabolic mortality. Day light exposure was associated with lower risk of cardiometabolic mortality (90-

200 100th percentiles: HR=0.73[0.54-0.98], p=.02) and non-cardiometabolic mortality (70-90th percentiles:
201 HR=0.86[0.76-0.97], p=.005; 90-100th percentiles: HR=0.81[0.69-0.94], p=.003) in minimally-adjusted models.

202 **Time-of-day association of light exposure with all-cause and cardiometabolic mortality**

203 Exposure to the brightest 10% of lighting environments in half-hour intervals between 01:00-06:00 predicted a
204 23-39% higher risk of all-cause mortality in minimal models, and 18-33% in fully-adjusted (Figure 2), when
205 compared to exposure to the dimmest 0-50th percentiles. The brightest 10% also had a 37-75% higher
206 cardiometabolic mortality risk between 01:00-06:00 in minimal models, and 39-73% between 02:00-06:00 in
207 fully-adjusted. Peak cardiometabolic risk occurred between 02:30-03:30. Non-cardiometabolic risk was
208 numerically lower than cardiometabolic risk in both minimal (14-35% between 00:30-06:00) and fully-adjusted
209 (15-28% between 01:00-06:00) models. Exposure to the brightest 10% of lighting environments between 07:00-
210 21:00 predicted 12-29% lower risk of all-cause mortality, and exposure between 07:00-21:00 predicted a 14-25%
211 lower risk of non-cardiometabolic mortality, in the minimal but not fully-adjusted models.



213 **Figure 2.** Hazard ratios [95%CI] of all-cause, cardiometabolic, and non-cardiometabolic mortality for light
214 exposures across 24 h, including minimally-adjusted (A) and fully-adjusted (B) models. Separate models were
215 implemented for each half-hour clock time interval, each including 50-70%, 70-90%, and 90-100% light intensity
216 groups referenced against 0-50%. Bonferroni correction for multiple comparisons required $p < .001$ for statistical
217 significance.

218 **Lower circadian amplitude and deviated circadian phase predicted higher risk of all-cause and cardiometabolic**
219 **mortality**

220 Higher minimum circadian amplitude predicted lower risk of all-cause mortality (minimal: HR=0.94[0.91-0.97]
221 per standard deviation, $p < .001$; full: HR=0.94[0.91-0.98], $p = .005$), cardiometabolic mortality (minimal:
222 HR=0.90[0.83-0.96], $p = .001$; full: HR=0.91[0.84-0.98], $p = .006$), and non-cardiometabolic mortality (minimal:
223 HR=0.96[0.91-1.00], $p = .02$, full: HR=0.96[0.92-1.01], $p = .05$). Higher mean circadian amplitude predicted lower
224 risk of all-cause mortality (minimal: HR=0.95[0.92-0.99], $p = .01$) and cardiometabolic mortality (minimal:
225 HR=0.89[0.82-0.97], $p = .004$, full: HR=0.91[0.83-1.00], $p = .02$), but not non-cardiometabolic mortality (see Table
226 3). Higher maximum circadian amplitude predicted lower risk of all-cause (HR=0.94[0.90-0.98], $p = .001$) and non-
227 cardiometabolic mortality (HR=0.96[0.92-1.00], $p = .02$) in minimal models, and cardiometabolic mortality across
228 both model levels (minimal: HR=0.89[0.81-0.96], $p = .002$; full: HR=0.92[0.84-1.01], $p = .04$). Early and late
229 circadian phase quintiles predicted higher risks of all-cause (0-20%: HR=1.33[1.17-1.51], $p < .001$; 20-40%:
230 HR=1.18[1.03-1.34], $p = .02$; 80-100%: HR=1.19[1.05-1.35], $p = .007$), cardiometabolic (0-20%: HR=1.48[1.12-1.97],
231 $p = .003$; 20-40%: HR=1.38[1.03-1.85], $p = .02$), and non-cardiometabolic mortality (0-20%: HR=1.30[1.13-1.50],
232 $p < .001$; 20-40%: HR=1.14[0.98-1.32], $p = .04$; 80-100%: HR=1.18[1.02-1.36], $p = .01$) compared to the quintile
233 centered at the sample circular mean phase, in minimal models. In fully-adjusted models, early circadian phase
234 predicted higher risks of all-cause (0-20%: HR=1.19[1.04-1.37], $p = .01$), cardiometabolic (0-20%: HR=1.35[0.99-
235 1.84], $p = .03$; 20-40%: HR=1.35[0.99-1.85], $p = .03$), and non-cardiometabolic (0-20%: HR=1.15[0.98-1.34], $p = .04$)
236 mortality. Intra-individual variability in circadian phase was not related to mortality. Numbers of all-cause,
237 cardiometabolic, and non-cardiometabolic deaths across the range of each circadian variable are reported in
238 Supplementary S6.

Table 3. Hazard ratios of all-cause, non-cardiometabolic, and cardiometabolic mortality for modeled circadian rhythm metrics.

Model		HR [95%CI]		
		All-cause	Non-cardiometabolic	Cardiometabolic
Minimally-adjusted	Mean Amplitude	0.95[0.92-0.99]**	0.97[0.93-1.02]	0.89[0.82-0.97]**
	Min. Amplitude	0.94[0.91-0.97]***	0.96[0.92-1.00]*	0.90[0.83-0.96]**
	Max. Amplitude	0.94[0.90-0.98]**	0.96[0.92-1.00]*	0.89[0.81-0.96]**
	Phase Variability	0.99[0.95-1.03]	0.99[0.94-1.04]	0.98[0.89-1.06]
	Mean Phase			
	0-20%	1.33[1.17-1.51]***	1.30[1.13-1.50]***	1.48[1.12-1.97]**
	20-40%	1.18[1.03-1.34]*	1.14[0.98-1.32]*	1.38[1.03-1.85]*
	60-80%	1.02[0.89-1.17]	0.99[0.85-1.15]	1.22[0.90-1.64]
	80-100%	1.19[1.05-1.35]**	1.18[1.02-1.36]*	1.26[0.94-1.70]
	Fully-adjusted	Mean Amplitude	0.96[0.92-1.01]	0.99[0.94-1.04]
Min. Amplitude		0.94[0.91-0.98]**	0.96[0.92-1.01]*	0.91[0.84-0.98]**
Max. Amplitude		0.97[0.93-1.02]	0.99[0.94-1.04]	0.92[0.84-1.01]*
Phase Variability		0.99[0.95-1.03]	0.99[0.95-1.04]	0.98[0.89-1.07]
Mean Phase				
0-20%		1.19[1.04-1.37]*	1.15[0.98-1.34]*	1.35[0.99-1.84]*
20-40%		1.15[0.99-1.33]	1.12[0.96-1.31]	1.35[0.99-1.85]*
60-80%		0.97[0.83-1.12]	0.96[0.81-1.13]	1.08[0.77-1.50]
80-100%		1.06[0.92-1.22]	1.05[0.89-1.23]	1.09[0.79-1.51]

* p<.05, ** p<.01, *** p<.001. Hazard ratios represent difference in mortality hazard per standard deviation increase in each circadian metric for mean, min., and max. amplitude, and phase variability. Hazard ratios for mean phase represent hazard of each percentile group relative to the 40-60% reference group, centered at the population mean phase (03:50). Phase ranges relative to sample mean for each percentile group were: -12 to -1.16 h (0-20%), -1.16 to -0.40 h (20-40%), 0.40 to 1.16 h (60-80%), and 1.16 to 12 h (80-100%).

240 Discussion

241 Across 14 million hours of light sensor data in ~89,000 individuals, those with exposure to brighter light at night
242 had a higher risk of all-cause mortality, and higher risk of mortality from cardiometabolic causes. Modeling the
243 impact of light on the circadian system indicated that suppressed circadian amplitude and deviated circadian
244 phase were associated with all-cause and cardiometabolic mortality, consistent with the known biological
245 effects of light exposure at night on the circadian clock.⁵

246 Exposure to brighter light at night (between 00:30 and 06:00) was associated with higher risk of all-cause
247 mortality. The effects of light were dose-dependent, with higher risk for those with the brightest levels of light
248 at night. Compared to individuals with low night light exposure (the 0-50th percentile), individuals in the 70-90th
249 percentiles of night light exposure had a 15-16% higher risk of all-cause mortality, while individuals in the 90-
250 100th percentiles of night light exposure had a 20-30% higher risk of all-cause mortality. Associations between
251 light at night and all-cause mortality were robust to multiple levels of adjustment for covarying factors, including
252 age, sex, ethnicity, physical activity, socio-economic advantage, social activity, smoking, urbanicity, shift work,
253 daylight exposure, and baseline cardiometabolic health.

254 Exposure to brighter light at night was associated with mortality by cardiometabolic and non-cardiometabolic
255 causes. Individuals in the 90-100th percentiles of night light exposure had a 30-41% higher risk of cardiometabolic
256 mortality, compared to those with low night light exposure (the 0-50th percentile). In comparison, for non-
257 cardiometabolic mortality, individuals in the 90-100th percentiles of night light exposure had a 15-27% higher
258 risk. These findings are consistent with the role of light exposure at night in the development of metabolic
259 syndrome and obesity,³²⁻³⁶ and with the role of circadian disruption in the development of cardiometabolic
260 diseases including myocardial infarction, stroke, hypertension, and diabetes.¹⁹⁻²² Analysis of mortality risk for
261 light exposure across half-hour intervals showed a peak cardiometabolic risk between 02:30-03:00 (73% greater
262 risk for brightest 10% vs. bottom 50%). This is consistent with evidence that circadian rhythms are most
263 disrupted by light exposure across a short interval in the middle of the biological night,^{5,37} and also consistent
264 with our modeling results that link lower circadian amplitude to higher cardiometabolic mortality risk.

265 Light synchronizes the timing of the brain's central circadian pacemaker to the 24 h light/dark cycle, but light
266 exposure during the night also causes suppression of circadian amplitude and shifted circadian phase.^{4,5,38} Using

267 a validated computational model representing the dynamic response of the central circadian clock to light, we
268 found that disrupted circadian rhythms predicted higher mortality risk. Each standard deviation reduction in
269 circadian amplitude was associated with a 5-6% higher all-cause mortality risk and a 9-11% higher
270 cardiometabolic mortality risk. Individuals whose circadian phase minima occurred more than one hour before
271 the group average had a 19-33% higher risk of all-cause mortality, and a 35-48% higher risk of cardiometabolic
272 mortality. These findings support the notion that circadian disruption is the mechanism linking light exposure at
273 night with higher mortality risk. This link could be explained by the role of circadian disruption in the initiation
274 and progression of disease,¹ or by the disruption of circadian regulation in gene expression that correlates with
275 premature mortality.³⁹

276 This study investigated the relationship between individual-level light exposure and mortality risk in a large, well-
277 characterized cohort, using personal light sensors. Previous large-scale studies have assessed satellite-derived
278 outdoor light exposure, finding associations with risk of all-cause mortality, and risk of coronary heart
279 disease.^{15,16} However, satellite data captures the outdoor environment only, and may not be an ideal proxy for
280 an individual's light exposure pattern, including indoor light levels.⁴⁰ Our analyses use data from personal sensors
281 and therefore capture a range of lighting environments specific to each individual, which is especially important
282 at night, when individuals are most at risk of exposure to light that disrupts their circadian rhythms.^{4,5} Personal
283 sensor data also allows for inclusion of individual-level day light exposure in mortality risk models, an important
284 control given day light can alter the sensitivity of the circadian system to light at night.⁴¹⁻⁴³ Furthermore,
285 individual-level data allowed us to model the effect of light exposure on each individual's circadian system, an
286 approach that incorporates information about their light exposure history. This modeling approach provides
287 mechanistic insight into the links between light at night, circadian rhythms, and mortality, and expands upon
288 research that derived circadian metrics from accelerometer data only.^{13,14}

289 There are several limitations to this study. Firstly, only one week of light exposure was available for each
290 participant. Light patterns, however, were stable across up to four repeated-measures collections in ~3,000
291 participants, indicating that one week of data was a reasonable proxy for an individual's typical light patterns.
292 Secondly, light/activity recordings did not occur simultaneously with collection of several covariates that are
293 subject to change over time. Thirdly, the computational model was developed using studies of healthy younger
294 adults,^{5,44} and does not account for individual differences in physiology, including possible age-related changes.⁴⁵

295 Finally, since this is a correlational study, is it possible that brighter light at night and premature mortality are
296 caused by unmeasured factors. However, evidence supports a causal pathway from night light exposure to
297 circadian disruption and premature mortality, particularly for cardiometabolic mortality.

298 These findings demonstrate the importance of maintaining a dark environment across the late night and early
299 morning hours, when the central circadian pacemaker is most sensitive to light. Protection of night lighting
300 environments may be especially important in those at risk for both circadian disruption and mortality, for
301 example in intensive care or aged care settings.^{46,47} Across the general population, avoiding light at night may
302 lead to reduction in disease burden, especially cardiometabolic diseases, and may enhance longevity.

303 **Data sharing statement**

304 The data underlying this work are available at the UK Biobank website, upon application:
305 <https://www.ukbiobank.ac.uk/enable-your-research/apply-for-access>. Scripts for data handling and analysis will
306 be made available upon request by Daniel P. Windred [daniel.windred@monash.edu].

307 **Acknowledgement**

308 This research has been conducted using data from UK Biobank, a major biomedical database (Project ID: 6818).
309 We thank the UK Biobank study participants, and the UK Biobank team for their work in developing and
310 maintaining this resource.

311 DPW, SWC, and AJKP conceived the study, and drafted the first manuscript. DPW coordinated the research,
312 under supervision from AJKP and SWC, and in partnership with AB. DPW was responsible for data handling,
313 cleaning, and analysis, with contributions from AB. All authors contributed to the interpretation and discussion
314 of findings. All authors revised and approved the final version of the manuscript. DPW had full access to all the
315 data in the study and takes responsibility for the integrity of the data and the accuracy of the data analysis.

316 AJKP and SWC received research funding from Versalux and Delos, and are co-founders and co-directors of
317 Circadian Health Innovations PTY LTD. SWC has also consulted for Dyson, and received research funding from
318 Beacon Lighting. PO co-founded Axivity Ltd, and was a Director until 2015. DPW: none; ACB: none; RS: none;
319 JML: none; MKR: none. This work was supported by the NIHR Manchester Biomedical Research Centre.

320 References

- 321 1. Allada R, Bass J. Circadian mechanisms in medicine. *New England Journal of Medicine*.
322 2021;384(6):550-561.
- 323 2. Zelinski EL, Deibel SH, McDonald RJ. The trouble with circadian clock dysfunction: multiple deleterious
324 effects on the brain and body. *Neuroscience & Biobehavioral Reviews*. 2014;40:80-101.
- 325 3. Abbott SM, Malkani RG, Zee PC. Circadian disruption and human health: A bidirectional relationship.
326 *European Journal of Neuroscience*. 2020;51(1):567-583.
- 327 4. Khalsa SBS, Jewett ME, Cajochen C, Czeisler CA. A phase response curve to single bright light pulses in
328 human subjects. *The Journal of physiology*. 2003;549(3):945-952.
- 329 5. Jewett ME, Kronauer RE, Czeisler CA. Phase-amplitude resetting of the human circadian pacemaker
330 via bright light: a further analysis. *Journal of biological rhythms*. 1994;9(3-4):295-314.
- 331 6. Vetter C. Circadian disruption: What do we actually mean? *European Journal of Neuroscience*.
332 2020;51(1):531-550.
- 333 7. Mohawk JA, Green CB, Takahashi JS. Central and peripheral circadian clocks in mammals. *Annual*
334 *review of neuroscience*. 2012;35:445-462.
- 335 8. Mure LS, Le HD, Benegiamo G, et al. Diurnal transcriptome atlas of a primate across major neural and
336 peripheral tissues. *Science*. 2018;359(6381)
- 337 9. Penev PD, Kolker DE, Zee PC, Turek FW. Chronic circadian desynchronization decreases the survival of
338 animals with cardiomyopathic heart disease. *American Journal of Physiology-Heart and Circulatory Physiology*.
339 1998;275(6):H2334-H2337.
- 340 10. Park N, Cheon S, Son GH, Cho S, Kim K. Chronic circadian disturbance by a shortened light-dark cycle
341 increases mortality. *Neurobiology of aging*. 2012;33(6):1122. e11-1122. e22.
- 342 11. Gu F, Han J, Laden F, et al. Total and cause-specific mortality of US nurses working rotating night
343 shifts. *American journal of preventive medicine*. 2015;48(3):241-252.
- 344 12. Knutson KL, Von Schantz M. Associations between chronotype, morbidity and mortality in the UK
345 Biobank cohort. *Chronobiology international*. 2018;35(8):1045-1053.
- 346 13. Leroux A, Xu S, Kundu P, et al. Quantifying the predictive performance of objectively measured
347 physical activity on mortality in the UK Biobank. *The Journals of Gerontology: Series A*. 2021;76(8):1486-1494.
- 348 14. Zuurbier LA, Luik AI, Hofman A, Franco OH, Van Someren EJ, Tiemeier H. Fragmentation and stability
349 of circadian activity rhythms predict mortality: the Rotterdam study. *American journal of epidemiology*.
350 2015;181(1):54-63.
- 351 15. Lu Y, Yin P, Wang J, et al. Light at night and cause-specific mortality risk in Mainland China: a
352 nationwide observational study. *BMC medicine*. 2023;21(1):1-11.
- 353 16. Sun S, Cao W, Ge Y, et al. Outdoor light at night and risk of coronary heart disease among older adults:
354 a prospective cohort study. *European Heart Journal*. 2021;42(8):822-830.
- 355 17. Di Angelantonio E, Kaptoge S, Wormser D, et al. Association of cardiometabolic multimorbidity with
356 mortality. *Jama*. 2015;314(1):52-60.
- 357 18. Reutrakul S, Knutson KL. Consequences of circadian disruption on cardiometabolic health. *Sleep*
358 *medicine clinics*. 2015;10(4):455-468.
- 359 19. Vyas MV, Garg AX, Iansavichus AV, et al. Shift work and vascular events: systematic review and meta-
360 analysis. *Bmj*. 2012;345
- 361 20. Manohar S, Thongprayoon C, Cheungpasitporn W, Mao MA, Herrmann SM. Associations of rotational
362 shift work and night shift status with hypertension: a systematic review and meta-analysis. *Journal of*
363 *hypertension*. 2017;35(10):1929-1937.
- 364 21. Knutsson A, Kempe A. Shift work and diabetes—a systematic review. *Chronobiology international*.
365 2014;31(10):1146-1151.
- 366 22. Wang Y, Yu L, Gao Y, et al. Association between shift work or long working hours with metabolic
367 syndrome: a systematic review and dose–response meta-analysis of observational studies. *Chronobiology*
368 *International*. 2021;38(3):318-333.
- 369 23. Martino TA, Oudit GY, Herzenberg AM, et al. Circadian rhythm disorganization produces profound
370 cardiovascular and renal disease in hamsters. *American Journal of Physiology-Regulatory, Integrative and*
371 *Comparative Physiology*. 2008;294(5):R1675-R1683.
- 372 24. Sudlow C, Gallacher J, Allen N, et al. UK biobank: an open access resource for identifying the causes of
373 a wide range of complex diseases of middle and old age. *PLoS medicine*. 2015;12(3):e1001779.
- 374 25. Windred DP, Jones SE, Russell A, et al. Objective assessment of sleep regularity in 60 000 UK Biobank
375 participants using an open-source package. *Sleep*. 2021;44(12):zab254.

- 376 26. Migueles JH, Rowlands AV, Huber F, Sabia S, van Hees VT. GGIR: a research community-driven open
377 source R package for generating physical activity and sleep outcomes from multi-day raw accelerometer data.
378 *Journal for the Measurement of Physical Behaviour*. 2019;2(3):188-196.
- 379 27. van Hees VT, Sabia S, Jones SE, et al. Estimating sleep parameters using an accelerometer without
380 sleep diary. *Scientific reports*. 2018;8(1):1-11.
- 381 28. Doherty A, Jackson D, Hammerla N, et al. Large scale population assessment of physical activity using
382 wrist worn accelerometers: The UK Biobank Study. *PLoS one*. 2017;12(2):e0169649.
- 383 29. Austin PC, Lee DS, Fine JP. Introduction to the analysis of survival data in the presence of competing
384 risks. *Circulation*. 2016;133(6):601-609.
- 385 30. Forger DB, Jewett ME, Kronauer RE. A simpler model of the human circadian pacemaker. *Journal of*
386 *biological rhythms*. 1999;14(6):533-538.
- 387 31. Stone JE, Postnova S, Sletten TL, Rajaratnam SM, Phillips AJ. Computational approaches for individual
388 circadian phase prediction in field settings. *Current Opinion in Systems Biology*. 2020;22:39-51.
- 389 32. Reid KJ, Santostasi G, Baron KG, Wilson J, Kang J, Zee PC. Timing and intensity of light correlate with
390 body weight in adults. *PLoS one*. 2014;9(4):e92251.
- 391 33. Obayashi K, Saeki K, Iwamoto J, et al. Exposure to light at night, nocturnal urinary melatonin
392 excretion, and obesity/dyslipidemia in the elderly: a cross-sectional analysis of the HEIJO-KYO study. *The*
393 *Journal of Clinical Endocrinology & Metabolism*. 2013;98(1):337-344.
- 394 34. McFadden E, Jones ME, Schoemaker MJ, Ashworth A, Swerdlow AJ. The relationship between obesity
395 and exposure to light at night: cross-sectional analyses of over 100,000 women in the Breakthrough
396 Generations Study. *American journal of epidemiology*. 2014;180(3):245-250.
- 397 35. Wyse CA, Biello SM, Gill JM. The bright-nights and dim-days of the urban photoperiod: implications
398 for circadian rhythmicity, metabolism and obesity. *Annals of medicine*. 2014;46(5):253-263.
- 399 36. Benedito-Silva AA, Evans S, Viana Mendes J, et al. Association between light exposure and metabolic
400 syndrome in a rural Brazilian town. *PLoS one*. 2020;15(9):e0238772.
- 401 37. Jewett ME, Kronauer RE, Czeisler CA. Light-induced suppression of endogenous circadian amplitude in
402 humans. *Nature*. 1991;350(6313):59-62.
- 403 38. Winfree AT. *The geometry of biological time*. vol 2. Springer; 1980.
- 404 39. Lu JY, Simon M, Zhao Y, et al. Comparative transcriptomics reveals circadian and pluripotency
405 networks as two pillars of longevity regulation. *Cell Metabolism*. 2022;
- 406 40. Huss A, van Wel L, Bogaards L, et al. Shedding some light in the dark—a comparison of personal
407 measurements with satellite-based estimates of exposure to light at night among children in the Netherlands.
408 *Environmental health perspectives*. 2019;127(6):067001.
- 409 41. Chang AM, Scheer FA, Czeisler CA. The human circadian system adapts to prior photic history. *The*
410 *Journal of physiology*. 2011;589(5):1095-1102.
- 411 42. Smith KA, Schoen MW, Czeisler CA. Adaptation of human pineal melatonin suppression by recent
412 photic history. *The Journal of Clinical Endocrinology & Metabolism*. 2004;89(7):3610-3614.
- 413 43. Hébert M, Martin SK, Lee C, Eastman CI. The effects of prior light history on the suppression of
414 melatonin by light in humans. *Journal of pineal research*. 2002;33(4):198-203.
- 415 44. Kronauer R. A quantitative model for the effects of light on the amplitude and phase of the deep
416 circadian pacemaker, based on human data. *Sleep*. 1990;90:306-309.
- 417 45. Duffy JF, Zitting K-M, Chinoy ED. Aging and circadian rhythms. *Sleep medicine clinics*. 2015;10(4):423-
418 434.
- 419 46. Durrington HJ. Light intensity on intensive care units—a short review. *J Intensive Crit Care*.
420 2017;3(2):23.
- 421 47. Turner PL, Mainster MA. Circadian photoreception: ageing and the eye's important role in systemic
422 health. *British Journal of Ophthalmology*. 2008;92(11):1439-1444.