

1 **Morning exercise and pre-breakfast metformin interact to reduce glycaemia in people**
2 **with Type 2 Diabetes: a randomized crossover trial**

3 Brenda J. Pena Carrillo^{1, 2}, Emily Cope^{1, 2}, Sati Gurel², Andres Traslosheros², Amber Kenny^{1,}
4 ², Nimesh Mody¹, Mirela Delibegovic¹, Sam Philip³, Frank Thies², Dimitra Blana⁴, Brendan M.
5 Gabriel^{1, 2, 5†}

6 *1. Aberdeen Cardiovascular and Diabetes Centre, Institute of Medical Sciences, School of*
7 *Medicine, Medical Sciences & Nutrition, University of Aberdeen, Aberdeen, UK.*

8 *2. The Rowett Institute, School of Medicine, Medical Sciences & Nutrition University of*
9 *Aberdeen, Aberdeen, UK.*

10 *3. Grampian Diabetes Research Unit, Diabetes Centre, Aberdeen Royal Infirmary,*
11 *Aberdeen, UK*

12 *4. Centre for Health Data Science, Institute of Applied Health Sciences, University of*
13 *Aberdeen, Aberdeen, UK.*

14 *5. Department of Physiology and Pharmacology, Integrative Physiology, Karolinska Institute,*
15 *Stockholm, Sweden*

16
17 †*Corresponding author – Dr B.M. Gabriel, P: The Rowett Institute, University of Aberdeen,
18 Ashgrove Rd W, Aberdeen AB25 2ZD, Aberdeen, UK. E: Brendan.gabriel1@abdn.ac.uk

| | |
|----------------------------|----------------------------|
| 19 Brenda J. Pena Carrillo | ORCID-0000-0001-8975-8798 |
| 20 Emily Cope | ORCID-0000-0003-3912-6287 |
| 21 Sati Gurel | ORCID-0000-0001-5084-180X |
| 22 Andres Traslosheros | ORCID-0000-0003-1504-4092 |
| 23 Amber Kenny | ORCID-0009-0000-1993-0038 |
| 24 Nimesh Mody | ORCID-0000-0002-2215-7952 |
| 25 Mirela Delibegovic | ORCID-0000-0001-6193-3152 |
| 26 Sam Philip | ORCID-0000-0001-6164-211X |
| 27 Frank Thies | ORCID-0000-0002-9275-9713 |
| 28 Dimitra Blana | ORCID-0000-0003-0488-6120 |
| 29 Brendan M. Gabriel | ORCID -0000-0001-6878-8779 |

30 Word count: 4686

31 Abstract

32 Exercise is recommended in the treatment of Type 2 Diabetes and can improve insulin
33 sensitivity [1]. However, previous evidence suggests that exercise at different times of the day
34 in people with type 2 diabetes may have opposing outcomes on glycaemia [2]. Metformin is
35 the most commonly prescribed initial pharmacological intervention in Type 2 Diabetes, and
36 may alter adaptations to exercise [3]. It is unknown if there is an interaction between metformin
37 and diurnal exercise outcomes. We aimed to investigate glycaemic outcomes of moderate
38 intensity morning vs. evening exercise in people with type 2 diabetes being prescribed
39 metformin monotherapy. We hypothesised that evening exercise would be more efficacious
40 than morning exercise at lowering glycaemia.

41 In this study, nine male and nine females with type 2 diabetes undergoing metformin
42 monotherapy (age 61 ± 2 year, mean \pm SEM) completed a 16-week crossover trial including 2-
43 week baseline recording, six weeks randomly assigned to a morning exercise (7-10am) or
44 evening exercise (4-7pm), and a two-week wash-out period. Exercise arms consisted of 30
45 minutes of walking at 70% of estimated max-HR every other day. Glucose levels were
46 measured with continuous glucose monitors and activity measured by wrist-worn monitors.
47 Food-intake was recorded by 4-day food diaries during baseline, first and last 2 weeks of each
48 exercise arm.

49 There was no difference in exercise intensity, total caloric intake, or total physical activity
50 between morning and evening arms. Acute glucose area under the curve (AUC), was lower
51 ($p=0.02$) after acute morning exercise (180.6 ± 16.1 mmol/L) compared to baseline (210.3 ± 18.0
52 mmol/L). Acute AUC glucose was significantly lower ($p=0.01$) in participants taking metformin
53 before breakfast (152.5 ± 10.59 mmol/L) compared with participants taking metformin after
54 breakfast (227.2 ± 27.51 mmol/L) only during the morning exercise arm. During weeks 5-6 of
55 the exercise protocol, AUC glucose was significantly lower ($p=0.04$) for participants taking
56 metformin before breakfast (168.8 ± 5.6), rather than after breakfast (224.5 ± 21.2) only during
57 morning exercise.

58 Our data reveal morning moderate exercise acutely lowers glucose levels in people with type
59 2 diabetes being prescribed metformin. This difference appears to be driven by individuals
60 that consumed metformin prior to breakfast rather than after breakfast. This beneficial effect
61 upon glucose levels of combined morning exercise and pre-breakfast metformin persisted
62 through the final two weeks of the trial. Our findings suggest that morning moderate intensity
63 exercise combined with pre-breakfast metformin intake may benefit the management of
64 glycaemia in people with type 2 diabetes.

65

66 Keywords

67 Chronobiology, Chrono-medicine, Circadian, Exercise, Lifestyle, Metformin, Physical activity,
68 Time-of-day, Walking

69 **Research in Context**

70 *What is already known about this subject?*

- 71 • Exercise at different times of the day in people with Type 2 Diabetes has opposite
- 72 outcomes on glycaemia.
- 73 • Metformin interferes with the glucose-lowering effect of acute exercise.
- 74 • It is unknown if there is an interaction between metformin intake timing and diurnal
- 75 exercise outcomes.

76 *What is the key question?*

- 77 • Is it possible to optimise timing of concomitant metformin and exercise in people with
- 78 Type 2 Diabetes?

79 *What are the new findings?*

- 80 • Morning moderate exercise acutely lowers glucose levels in people with Type 2
- 81 Diabetes being prescribed metformin.
- 82 • This difference appears to be driven by individuals that consumed metformin prior to
- 83 breakfast rather than after breakfast.
- 84 • Morning exercise combined with pre-breakfast metformin persistently reduced glucose
- 85 compared to morning exercise combined with post-breakfast metformin through the
- 86 final week (week 6) of the intervention.

87 *How might this impact on clinical practice in the foreseeable future?*

- 88 • Our study suggests it may be possible to make simple changes to the time that people
- 89 with Type 2 Diabetes take metformin and perform exercise to improve their blood
- 90 glucose.

91

92 **Abbreviations**

93 BIOS: Biomathematics and Statistics Scotland

94 CGMs: Continuous glucose monitors

95 CONSORT: Consolidated Standards of Reporting Trials

96 GP: General Practitioner

97 HIIT: High intensity interval training

98 IRAS: Integrated Research Application System

99 MCTQ: Munich Chronotype Questionnaires

100 OCT: Renal organic cation transporter

101 REC: Research Ethics Committee

102 REM: Rapid eye movement

103 RPF: Renal plasma flow

104 SEM: Standard error of mean

105 SPCRN: Scottish Primary Care Research Network

106 Max-HR: Maximum heart rate

107 **1. Introduction**

108 Type 2 Diabetes Mellitus is a growing, global health challenge [4]. Exercise is often
109 recommended by front-line clinicians as a potent therapeutic treatment in people with type 2
110 diabetes which can improve insulin sensitivity [1]. However, little is known regarding the
111 optimal time of day to perform exercise for people with Type 2 Diabetes. Previous evidence
112 suggests that morning high intensity interval training over two weeks increases blood glucose
113 levels in people with type 2 diabetes [2], drawing parallels to the dawn phenomenon.
114 Conversely, evening exercise reduced glycaemia on the day of exercise in people with type 2
115 diabetes [2]. These apparently divergent outcomes of morning vs. evening exercise highlight
116 that it is imperative to optimise the timing of exercise for people with type 2 diabetes.

117 Several other studies have assessed the time-of-day effect of exercise upon glycaemic or
118 insulin-related outcomes. For example, cross-sectional data in 775 participants demonstrates
119 that moderate-to-vigorous exercise in the afternoon or evening was associated with a greater
120 reduction of insulin resistance compared with an evenly distributed daily time-pattern of
121 exercise [5]. Further associative evidence [6], demonstrates that in 2,416 participants that
122 moderate-to-vigorous physical activity performed in the afternoon is associated with
123 improvements in glycaemic control in people with diabetes. In a randomised trial, men who
124 were overweight or obese demonstrated improvements in glycaemic control after evening
125 exercise, while a group who exercised in the morning saw no improvements in glycaemic
126 control [7]. In another randomised trial assessing people with compromised metabolism, a
127 group that performed exercise training in the evening experienced superior beneficial
128 improvements in fasting plasma glucose levels compared to a group that performed exercise
129 training in the morning [8]. Skeletal muscle is key in the metabolic response to exercise [1]
130 and it has been demonstrated that people with type 2 diabetes have an intrinsically altered
131 circadian rhythm in skeletal muscle, both at the level of the molecular clock, and of
132 mitochondrial function [9]. Therefore, it is not clear whether the divergent time-of-day effect of
133 exercise on glycaemic regulation is due to an intrinsic metabolic disruption, or whether this
134 phenomenon will persist in people who are metabolically healthy. Indeed, glycaemic regulation
135 does not appear to be different in metabolically healthy participants between a single bout of
136 morning or afternoon exercise [10].

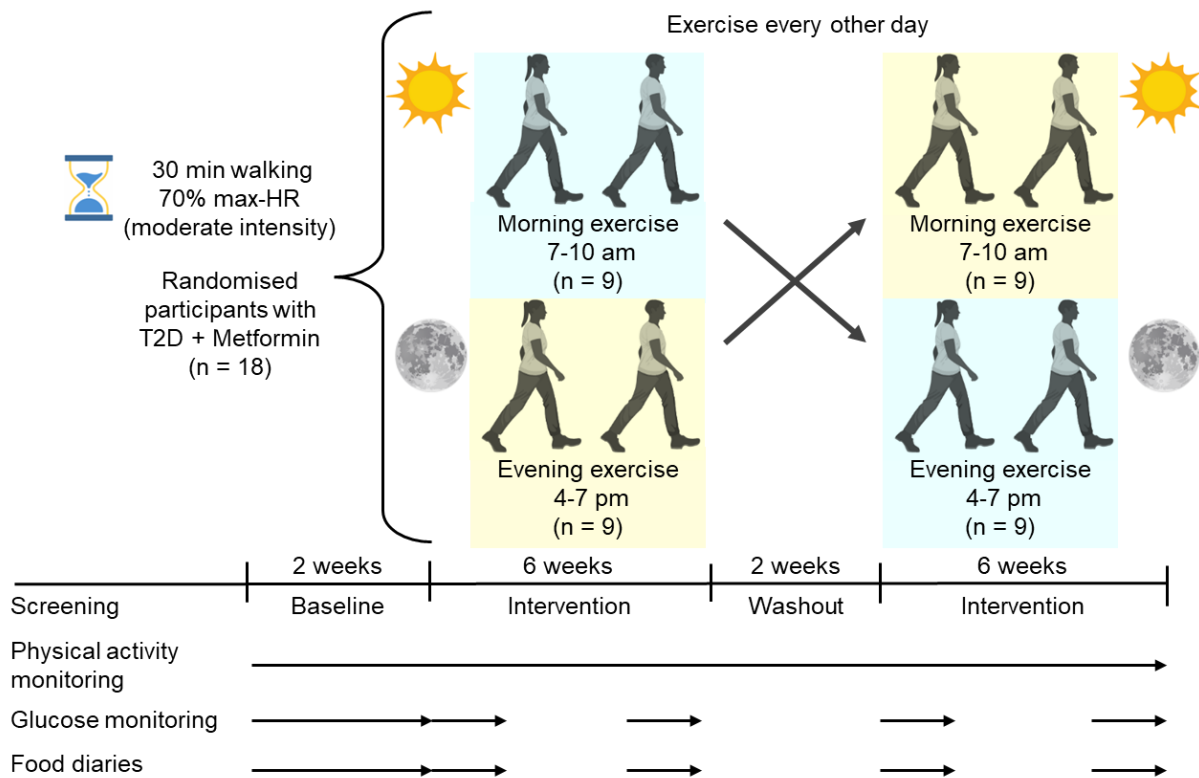
137 Metformin is the most commonly prescribed initial pharmacological intervention in type 2
138 diabetes and is known to alter skeletal muscle mitochondrial adaptations to exercise [3]. Further,
139 it has been suggested that metformin may interfere with the glucose-lowering effect of acute
140 exercise [11, 12]. However, it is unclear whether there is an interaction between metformin
141 and exercise at different times of the day. Optimising exercise timing in people with type 2
142 diabetes is critically important, but also is to understand any interactions with widely prescribed
143 pharmacological treatments. Furthermore, previous trials [2, 13] in people with type 2 diabetes
144 have not assessed whether compensatory physical activity, altered diet, or changed sleeping
145 patterns underlie any time-of-day exercise effect. In this 16-week randomised crossover study,
146 we aimed to investigate glycaemic outcomes of moderate intensity exercise at different times
147 of the day in people with type 2 diabetes also being prescribed metformin monotherapy.
148 Secondary outcomes included total physical activity, medication timing, diet, and sleep. Based
149 on previous evidence [2, 5–8], we hypothesised that evening exercise would be more
150 efficacious in lowering glycaemia in the trial.

151 **2. Methods**

152 **2.1. Study Design & Ethical approval**

153 The study was conducted following ethical approval from the UK Health Research Authority's
154 Integrated Research Application System (IRAS), and via the London Centre Research Ethics

155 Committee (REC reference: 20/PR/0990; IRAS project ID: 292015) and in accordance with
 156 the principles of the Declaration of Helsinki as revised in 2008. Informed written consent was
 157 obtained from participants during recruitment. The trial was preregistered - Research Registry
 158 Unique Identifying Number: researchregistry6311. Nine males and nine females with type 2
 159 diabetes also being prescribed metformin monotherapy completed a remote, randomised,
 160 crossover two-arm trial. An overview of the study's design is shown in Figure 1.



161

162 *Figure 1. Study Design. HR, Heart rate. Figure created with Biorender.*

163 **2.2. Participants**

164 **2.2.1. Eligibility criteria**

165 To be considered eligible for inclusion, participants had to be diagnosed with type 2 diabetes
 166 (insulin independent); have a body Mass Index of 20-36 kg/m²; aged 45-75 years, male or
 167 female; be prescribed metformin; be able to participate in an exercise intervention; be able to
 168 interact with smart-phone apps and be able to provide informed consent. Participants were
 169 excluded from the study if they were treated with insulin medication; they were current nicotine
 170 users (cigarettes/nicotine gum etc.); they were past nicotine users <6 months before inclusion
 171 in the study; have a pre-existing cardiovascular condition; pre-existing blood-borne disease;
 172 pre-existing rheumatic illness; have cancer; have a pre-existing psychiatric disorder; another
 173 pre-existing systemic disease; extreme chronotype (e.g., extreme 'lark' or 'owl'); prescribed
 174 any glycaemia regulating medications other than metformin; already meeting physical activity
 175 guidelines *i.e.* > 150 minutes of moderate intensity activity a week or 75 minutes of vigorous
 176 intensity activity a week or those who could not adequately read or understand English.

177 **2.2.2. Recruitment**

178 Volunteers were recruited from the Aberdeen and Aberdeenshire areas through the Scottish
 179 Primary Care Research Network (SPCRN), over the course of 1 year, between May 2021 and
 180 June 2022. The experimental study included recruitment and exercise interventions for two

181 groups, winter, and summer cohort. SPCRN conducted a pre-screening and eligible potential
182 volunteers received a letter of invitation from their National Health Service GP practice. If
183 individuals were interested in participating, they were sent the consent form and
184 questionnaires as part of an information pack. After phone consultation, participants who
185 agreed to continue were instructed to complete, sign and to mail the forms back to the research
186 team. Following a review of the forms to ensure they were properly completed; the necessary
187 equipment was posted to the participants. Subsequently, participants received another phone
188 call from a member of the research team to review the participant information sheet (PIS),
189 answer any questions the participant may have and explain the instructions on how to fit
190 continuous glucose monitors and physical activity monitors.

191 GPs were notified about their patient's participation in the study and the researchers were sent
192 participants' information about BMI, HbA1c, date of type 2 diabetes diagnosis, and time since
193 metformin prescription from the GP records. One participant did not have any available data,
194 five of the participants did not have available records about type 2 diabetes diagnosis date
195 and four participants time since metformin prescription as they were new to the GP.

196 **2.2.3. Sample size calculation**

197 The number of participants (30) was determined in collaboration with an independent
198 statistician at Biomathematics and Statistics Scotland (BioSS) based on our previous study
199 [2]. *i.e.* an estimated difference in mean glucose concentration of 0.69 mmol/L, an estimated
200 standard deviation (SD) of 1.32 mmol/L (SD of the individual differences between two exercise
201 treatments), a paired analysis, a significance level of 0.05 and a power of 80%.

202 **2.2.4. Randomization to morning or evening exercise**

203 Randomisation was carried out by an independent statistician at BioSS. Microsoft Excel was
204 used to randomly allocate participants to the two possible sequences (*i.e.*, morning first or
205 evening first) in blocks by order of joining the trial and sex. The randomisation was generated
206 once we received a positive response from the participant.

207 **2.2.5. Adherence monitoring**

208 Compliance with the exercise regimen were assessed using real-time data obtained from the
209 Garmin Connect (Garmin Ltd, Olathe, KS, US) and LibreView (Abbott Diabetes Care Inc,
210 Alameda, CA, US) sites. Participants missing pre-defined adherence targets (*i.e.*, either
211 missing >4 exercise windows in less than 2 weeks, with a heart rate discrepancy of >15%
212 during exercise or >4 days with no glucose reading) were contacted by phone call or e-mail
213 and encouraged to improve adherence. If adherence was not improved, they were not
214 considered for the final data analysis. When the trial coincided with the Christmas holidays,
215 the wash-out period was extended for a period of 4 weeks so that the intervention arms did
216 not run during the Christmas holidays.

217 **2.3. Exercise Intervention**

218 Participants were requested to perform 30 minutes of walking every other day during a 6-week
219 period, maintaining, as close as possible, 70% of their estimated maximum heart rate
220 (estimated with the formula 220 minus age [14]) during exercise. Participants were instructed
221 to perform exercise within a 3-hour window between either 7:00-10:00 AM or 4:00- 7:00 PM.
222 The overall 16-week trial period included 2-week baseline recording, 12-week intervention
223 arms (6 weeks morning and then 6 weeks evening exercise, or vice versa) with a 2-week
224 washout between trial arms. Physical activity data were collected for the entirety of the trial,
225 pre-trial and wash-out period.

226 **2.4. Outcomes**

227 **2.4.1. Physical activity**

228 Physical activity data (assessed as step count per day and heart rate) as well as sleep quality
229 were collected via a wrist-based physical activity monitor Garmin Vivosmart 4 (Garmin Ltd,
230 Olathe, KS, US), which participants were asked to wear for the entire duration of the trial.
231 Participants were instructed to download the Garmin Connect application and log in with a
232 study password. The outcomes of the physical activity monitors were step count per day, heart
233 rate and sleep quality. Participant's chronotype was determined using the self-report Munich
234 Chronotype Questionnaire.

235 **2.4.2. Glucose monitoring**

236 Participants were provided with continuous glucose monitors The FreeStyle Libre 2 sensor
237 (CGMs, Abbott Diabetes Care Inc, Alameda, CA, US), that measures the glucose
238 concentration in interstitial fluid continuously, storing a reading every 15 minutes. Sensors had
239 a working life of 2-weeks. Glycaemia data was collected by the LibreView (Abbott Diabetes
240 Care Inc, Alameda, CA, US) cloud system, participants were instructed to download the
241 FreeStyle LibreLink application on their own smart phones to share and link their data to a
242 LibreView account in real time. Glucose information was collected for 2 weeks before start of
243 the intervention, during the first 2 weeks, and for the last two weeks of each exercise
244 intervention.

245 **2.4.3. Dietary Intake and metformin dose**

246 Participants were asked to maintain their normal diet consistently throughout the trial and
247 record their diet throughout the trial using a 4-day food diary in which the participant recorded
248 the food eaten, the time of day each meal was consumed, the cooking methods used, and the
249 portion sizes. A 4-day food diary was completed during the baseline period, and during the
250 first 2 weeks, and the last 2 weeks of each exercise intervention. Dietary intake was
251 determined using Windiet software (Univation Ltd, The Robert Gordon University, Aberdeen,
252 Scotland, UK). Participants were also asked to record the time and dose of metformin on their
253 food diaries. As dietary intake and metformin time and dose were self-reported, the data
254 analysis of the food diaries and metformin time-doses corresponded to 14 participants and the
255 metformin analysis is from 13 participants that fulfilled this requirement.

256 **2.5. Data analysis**

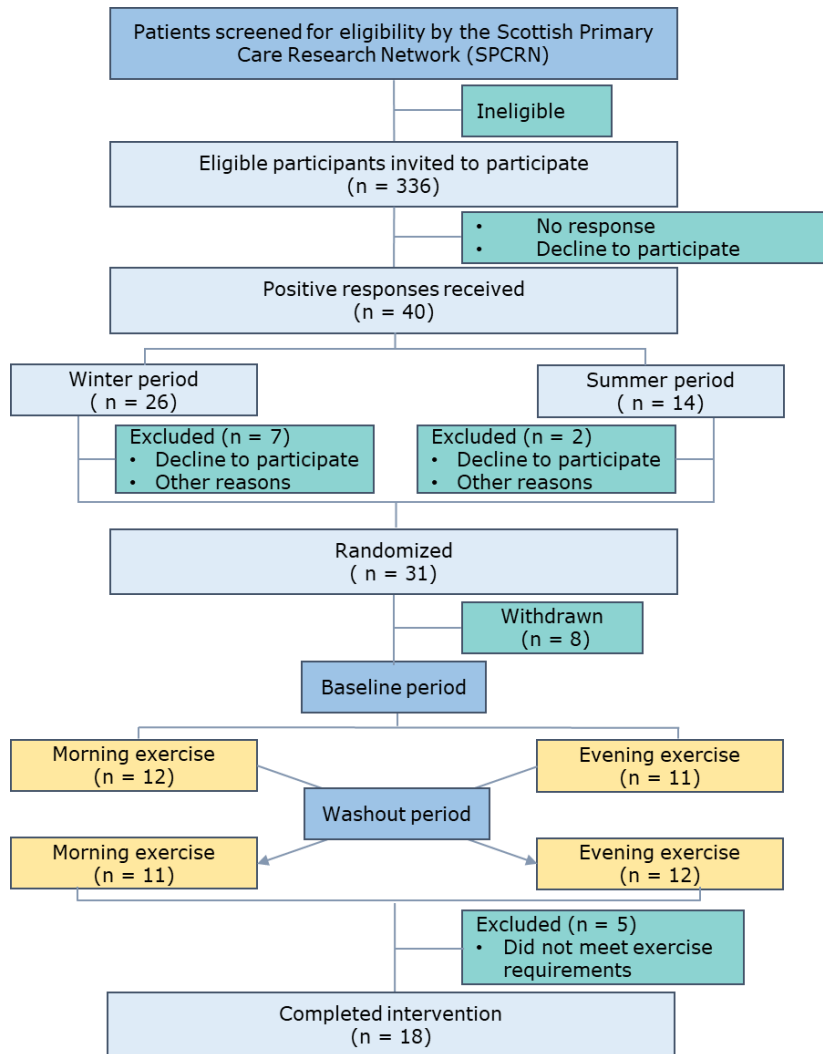
257 Blood glucose levels were measured using CGMs, from which 24-hours hourly mean were
258 calculated using the R Studio statistical software package v2022.12 (Rstudio.com; R version
259 4.2.2, R Foundation for Statistical Computing, Boston, MA, US). Data was then analysed using
260 Prism 9.5.1 software (GraphPad, San Diego, CA, US) by One-way ANOVA or two-way
261 ANOVA followed up by Holm-Šídák's multiple comparisons test (significance level set at
262 $p < 0.05$). Baseline characteristics between males and females were compared by means using
263 t-test (significance level set at $p < 0.05$). Results are expressed as Mean \pm SEM and estimates
264 with 95% CIs.

265 **3. Results**

266 **3.1. Participants recruitment and characteristics.**

267 Of the forty positive responses received, nine male and nine females with type 2 diabetes
268 being prescribed metformin completed the 16-week crossover intervention; see Figure 2 for
269 consolidated Standards of Reporting Trials (CONSORT) flow chart. Following randomization,
270 eight participants withdrew for personal reasons, four of them from the winter cohort and four

271 from summer group. After completion of the trial, five participants did not meet the exercise
 272 intervention requirements, finishing with eleven participants from winter; and seven from the
 273 summer cohort. In terms of crossover sequence, the study finished with eight participants who
 274 did morning exercise first and ten participants who did evening exercise first. Sleep data
 275 corresponds to fifteen participants who fulfilled this requirement, glucose data was missing
 276 from one participant during the last 2 weeks of the morning period and from two participants
 277 during the last 2 weeks of evening exercise. Baseline characteristics of study participants that
 278 completed the trial are shown in Table 1 (Characteristics according to different stratification
 279 are shown in supplementary Tables 1,2,3,4,5).



280

281 *Figure 2. Consolidated Standards of Reporting Trials (CONSORT) flow chart.*

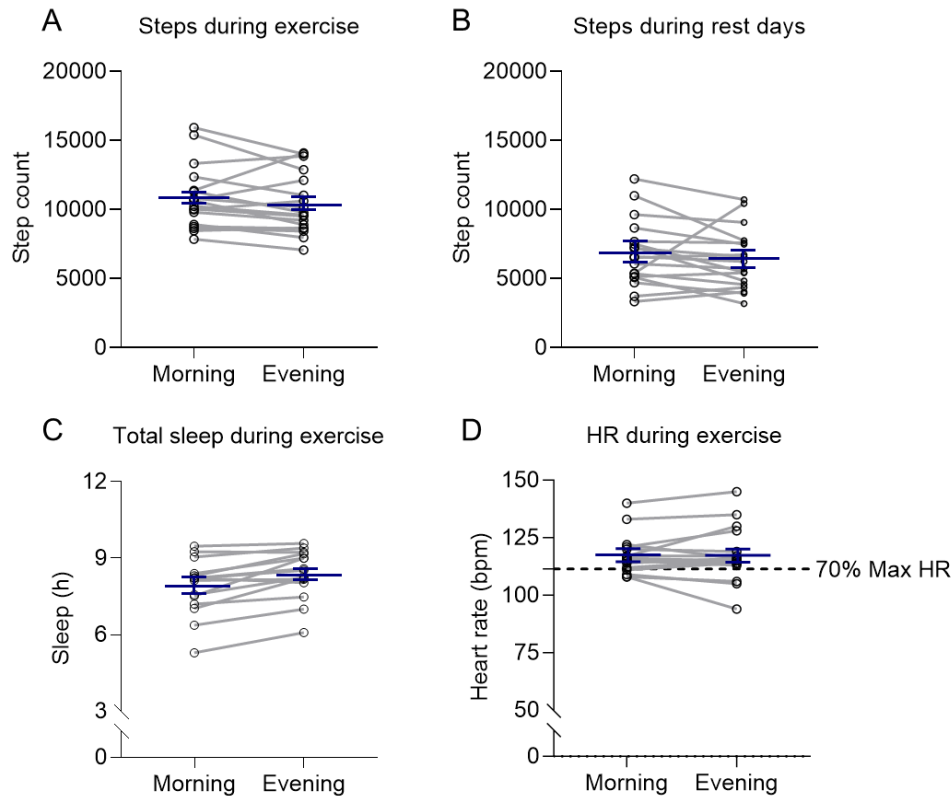
282 *Table 1. Baseline characteristics of study participants.*

| Characteristic (n = 18) | Mean ± SEM |
|----------------------------------|----------------------|
| Sex | Male n=9; Female n=9 |
| Age (years) | 61±2 |
| BMI (Kg/m ²) | 30.6±0.7 |
| HbA1c (mmol/mol) | 64.4±15.0 |
| HbA1c (%) | 8.0±0.3 |
| Time since T2D diagnosed (years) | 8.2±1.7 |
| Dose of Metformin per day (mg) | 1313.0±134.6 |
| Time of Metformin (years) | 5.2±1.0 |
| Steps per day at baseline | 6798±595 |

283 *T2D, Type 2 Diabetes*

284 **3.2. Adherence to exercise intervention.**

285 The total number of exercise sessions participants were asked to complete during each
286 exercise period was 21. The exercise completion rate was consistent ($p=0.47$) between
287 morning (19.1±1.3 sessions) and evening exercise (18.1±1.4 sessions) (Supplementary
288 Figure 1). Total physical activity was similar between the arms of the trial (Figure 3A, B). The
289 number of mean daily steps recorded during baseline was 6798.0±595.6. During exercise
290 days participants completed a mean daily total of 10814.0±530.7 steps and 10373.0±514.6
291 steps during morning and evening, respectively ($p=0.15$). During rest days participants
292 completed a mean daily total of 6843.0±561.8 steps and 6344.0±514.3 steps during morning
293 and evening, respectively ($p=0.24$). Total hours of sleep registered from Garmin devices
294 (8.3±0.3) was significantly higher ($p=0.03$) the hours of sleep recorded from self-reported
295 MCTQ (7.67±0.2) (Supplementary Figure 2). The total hours of sleep indicated a trend (one-
296 way ANOVA: $p=0.06$) showing longer sleep duration during evening exercise (8.3±0.2 hours)
297 compared with morning exercise (7.9±0.2 hours), however there was no difference compared
298 with baseline ($p=0.31$, $p=0.40$, morning exercise, evening exercise, respectively) (Figure 3C).
299 Sleep architecture such as deep sleep, light sleep, REM sleep and time awake showed no
300 significant difference between baseline, morning and evening exercise ($p=0.35$, $p=0.57$,
301 $p=0.06$, $p=0.20$, respectively) (Supplementary Figure 3). Participants were instructed to
302 exercise at an estimated 70% of max-HR, which was 111.4±1.3 bpm. Exercise intensity during
303 morning and evening exercise was similar (Figure 3D), as measured by HR (117.2±1.9 bpm
304 and 117.3±2.7 bpm, respectively, $p=0.93$). Overall, our results show no differences in physical
305 activity or compensatory activity between morning and evening exercise.

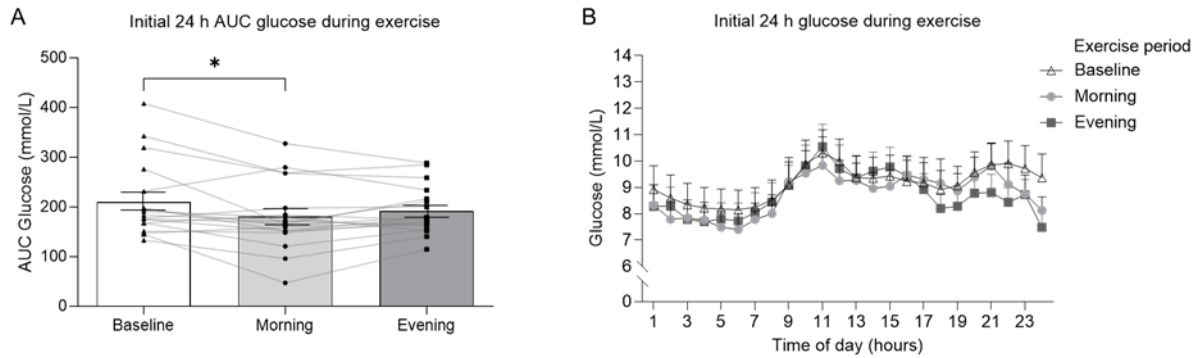


306

307 *Figure 3. Step count, max-HR and total sleep hours during the morning and evening exercise*
308 *periods. The values are shown for number of steps on (A) Days when the participants*
309 *performed exercise (n=18) and (B) Rest days (n=18); (C) Total sleep hours during exercise*
310 *(n=15) and (D) Max-HR (n=18) throughout trial; blue lines are mean±SEM, dotted line (Figure*
311 *D) represents 70% Max-HR estimated; HR, Heart rate. Step count, total hours of sleep and*
312 *sleep insights were analysed using one-way ANOVA, total hours of sleep from Garmin devices*
313 *vs MCTQ and Max-HR were analysed using paired t-test.*

314 3.3. Changes in glucose during exercise intervention

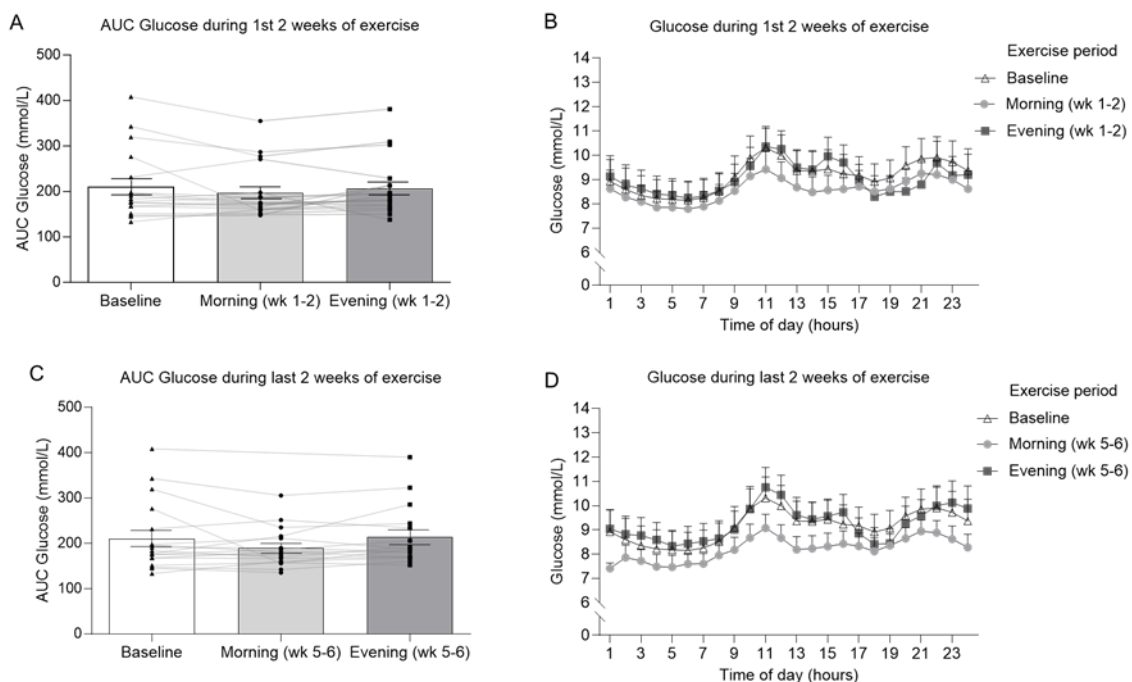
315 There was a significant decrease ($p=0.02$) in acute (first 24 hours of exercise) AUC glycemia
316 during morning exercise (180.6 ± 16.1 mmol/L) compared with baseline (210.3 ± 18.0 mmol/L),
317 whereas there were no significant differences in acute glycemia levels during evening exercise
318 compared with baseline ($p=0.12$). No change in acute glucose levels between morning and
319 evening exercise were observed ($p=0.14$) (Figure 4A). An hour-by-hour time-course of glucose
320 readings did not indicate a difference in glycemia during the trial ($p>0.05$) (Figure 4B).



321

322 *Figure 4. Acute 24-hour glucose levels. (A) Area under the curve (AUC) values for glucose*
 323 *levels during the first 24 hours of exercise. (n=18) (B) Time-course plot hourly glucose levels*
 324 *for the first 24 hours of exercise during baseline, morning, and evening intervention (n=18).*
 325 *Wk, week. *p< 0.05. Values are mean±SEM, lines represent individual values. Data were*
 326 *analysed using one-way ANOVA followed up by Holm-Šídák's multiple comparisons test.*

327 24-hour AUC glucose during baseline (210.3±18.0 mmol/L), morning (197.3±13.9 mmol/L)
 328 and evening (206.7±14.9 mmol/L) during weeks 1-2 did not differ significantly (p=0.24) (Figure
 329 5A). Further, no difference in glucose concentration was observed at any time point during the
 330 24-hour time-course between baseline, morning, and evening exercise, during weeks 1-2
 331 (Figure 5B). Similar findings were observed at weeks 5-6 (Figure 5D).



332

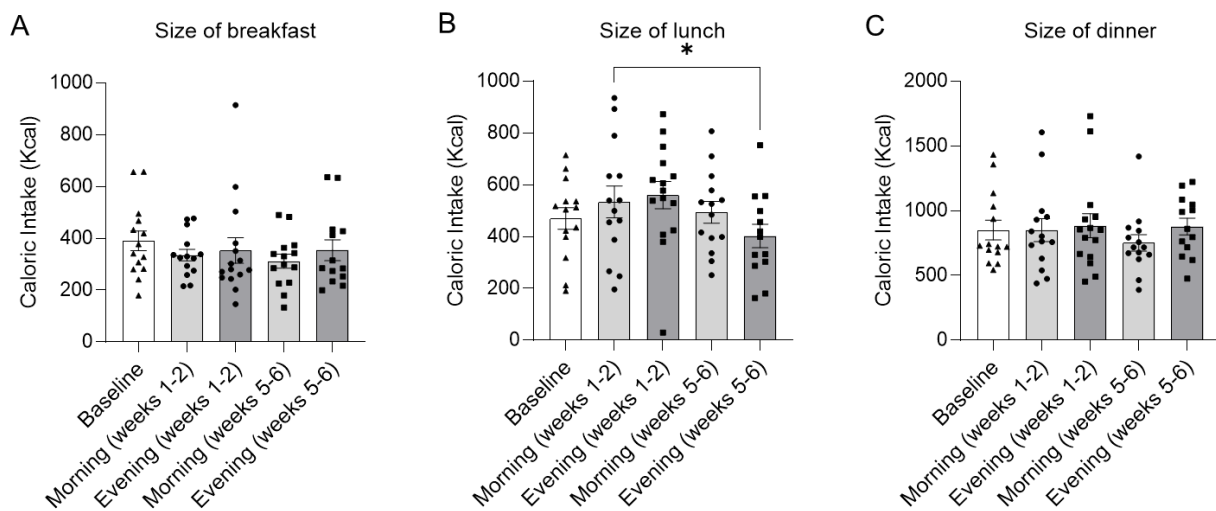
333 *Figure 5. 24-hour glucose levels in response to exercise intervention. (A) Area under the curve*
 334 *(AUC) 24-hour glucose for week 1-2 of exercise intervention (n=18) (B) Time-course plot 24-*
 335 *hour glucose in weeks 1-2 (n=18) (C) Area under the curve (AUC) 24-hour glucose for week*
 336 *5-6 of exercise intervention (n=17) (D) Time-course plot 24-hour glucose in weeks 5-6 (n=17).*
 337 *Wk, week. Values are mean±SEM, lines represent individual values. Data were analysed*
 338 *using one-way ANOVA followed up by Holm-Šídák's multiple comparisons test.*

339 No significant interaction effect was observed for sex x time of the exercise (Supplementary
 340 Figure 4). There was a trend (p=0.07) showing lower AUC glucose levels in summer

341 (222.4±6.1) compared to the winter (169.8±0.9). This consistent pattern persisted throughout
342 the entire intervention period, however, this difference in AUC glucose levels between winter
343 and summer did not reach statistical significance ($p=0.07$) (Supplementary Figure 5).

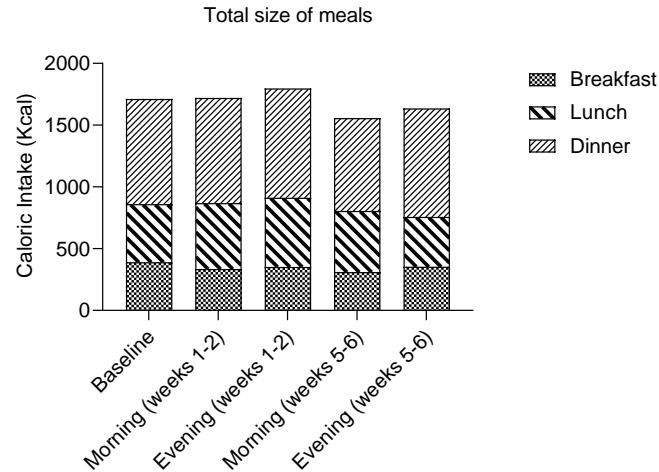
344 3.4. Caloric intake during exercise intervention

345 There were no changes in dietary energy intake during breakfast ($p=0.30$), baseline
346 (390.5±38.2 Kcal), morning weeks 1-2 (355.0±22.8 Kcal), evening weeks 1-2 (353.1±49.6
347 Kcal), morning weeks 5-6 (311.6±27.21 Kcal), evening weeks 5-6 (354.2±40.71 Kcal)
348 throughout the trial (Figure 6A). Energy intake during lunch was significantly different ($p=0.03$)
349 between morning weeks 1-2 (534.3±61.0 Kcal) and evening weeks 5-6 (402.7±45.5 Kcal)
350 (Figure 6B). However, no significant differences were observed ($p=0.64$) when comparing
351 evening weeks 5-6 with the energy intake at baseline (470.4±41.3 Kcal). There was no
352 difference in caloric ingestion of dinner ($p=0.14$) (Figure 6C) between arms of the trial. No
353 changes in caloric intake were detected between comparable periods of the trial.



354
355 *Figure 6. Mean caloric intake during exercise intervention. Data collected from self-reported*
356 *4-days food diaries for (A) Size of breakfast (n=14), (B) Size of lunch (n=14) and (C) Size of*
357 *dinner (n=14). Values are mean±SEM. Data were analysed using one-way ANOVA followed*
358 *up by Holm-Šidák's multiple comparisons test.*

359 There were no differences ($p=0.33$) in total daily caloric intake consumed during baseline
360 (570.6±142.1 Kcal), morning weeks 1-2 (573.3±149.9 Kcal), evening weeks 1-2 (533.1±116.8
361 Kcal), morning weeks 5-6 (585.2±165.6 Kcal) and evening weeks 5-6 (545.2±167.3 Kcal)
362 (Figure 7). Throughout the trial, caloric intake was significantly higher ($p<0.001$) during dinner
363 (843.1±23.8 Kcal), compared with breakfast (349.0±13.0 Kcal) and lunch (492.4±27.3 Kcal).

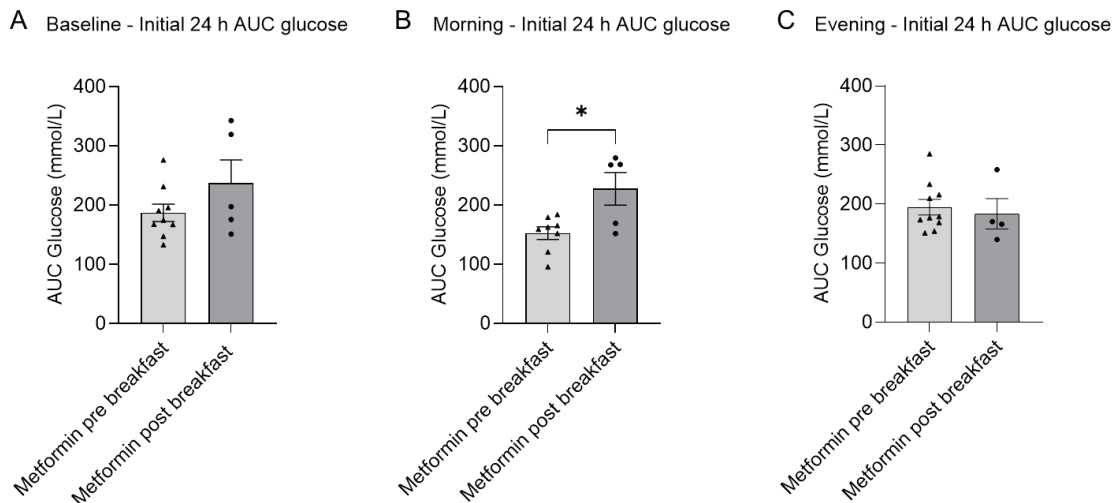


364

365 *Figure 7. Total daily caloric intake. Data collected from self-reported 4-days food diaries from*
 366 *baseline (n = 14), morning weeks 1-2 (n = 14), evening weeks 1-2 (n=15), morning weeks 5-*
 367 *6 (n=14), evening weeks 5-6 (n=13). Values are mean±SEM. Data were analysed using one-*
 368 *way ANOVA followed up by Holm-Šidák's multiple comparisons test.*

369 3.5. Meals and metformin timing

370 Acute 24 h AUC glucose was lower ($p=0.01$) in participants taking metformin before breakfast
 371 (152.5 ± 10.6 mmol/L) compared with participants taking metformin after breakfast (227.2 ± 27.5
 372 mmol/L) only when the participants performed morning exercise (Figure 8B). No differences
 373 were observed for metformin before or after breakfast for the baseline and evening exercise
 374 arms of the trial ($p=0.17$ and $p=0.67$, respectively), nor for metformin before or after dinner
 375 during baseline, or morning or afternoon exercise ($p=0.44$ and $p=0.25$, respectively)
 376 (Supplementary Figure 6).

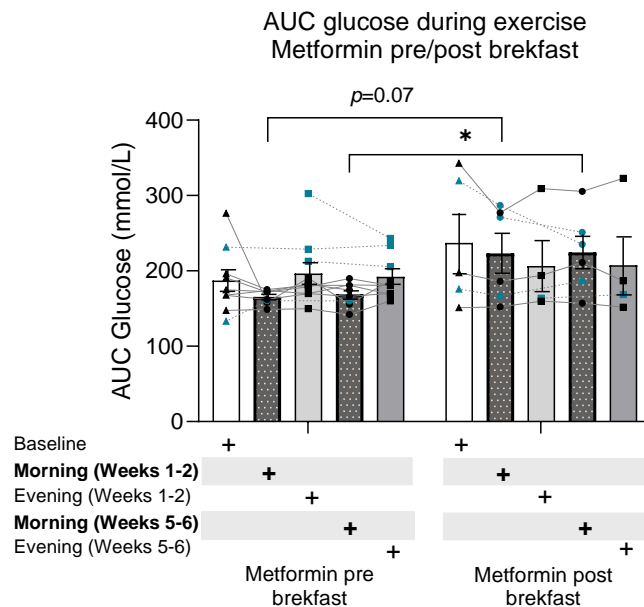


377

378 *Figure 8. Meal and metformin timing. Area under the curve (AUC) values for glucose levels*
 379 *during the first 24 hours of exercise for (A) Baseline, metformin pre-breakfast (n=9), metformin*
 380 *post-breakfast (n=5); (B) Morning exercise, metformin pre-breakfast (n=8), metformin post-*
 381 *breakfast (n=5); (C) Evening exercise, metformin pre-breakfast (n=10), metformin post-*
 382 *breakfast (n=4). * $p < 0.05$. Values are mean±SEM. Data were analysed using unpaired t-test.*

383 During morning exercise (weeks 1-2), participants taking metformin before breakfast exhibited
 384 a trend ($p=0.07$) to have lower AUC glucose levels (165.4 ± 3.3 mmol/L) compared with

385 participants taking metformin after breakfast (223.3 ± 25.1 mmol/L) (Figure 9). During weeks
 386 5-6 of the exercise protocol, glucose was significantly lower ($p=0.04$) for participants taking
 387 metformin before breakfast (168.8 ± 5.6), rather than after breakfast (224.5 ± 21.2) only during
 388 morning exercise. No differences in AUC glucose for metformin before/after breakfast were
 389 observed for the evening arm of the trial throughout the protocol (evening arms, weeks 1-2,
 390 $p=0.80$, weeks 5-6 $p=0.72$).



391

392 *Figure 9. Meal and metformin timing throughout the trial. Area under the curve (AUC) values*
 393 *for glucose levels for Baseline period, metformin pre-breakfast (n=9), metformin post-*
 394 *breakfast (n=5); Morning exercise (weeks 1-2), metformin pre-breakfast (n=8), metformin*
 395 *post-breakfast (n=6); Evening exercise (weeks 1-2), metformin pre-breakfast (n=10),*
 396 *metformin post-breakfast (n=4); Morning exercise (weeks 5-6), metformin pre-breakfast (n=8),*
 397 *metformin post-breakfast (n=6); Evening exercise (weeks 5-6), metformin pre-breakfast (n=9),*
 398 *metformin post-breakfast (n=4). *p< 0.05. Values are mean±SEM. Blue dots are participants*
 399 *that changed metformin intake timing between different periods of the trial, lines represent*
 400 *individual crossover values. Data were analysed using two-way mixed-model ANOVA followed*
 401 *up by Holm-Šidák's multiple comparisons test.*

402 4. Discussion

403 These data demonstrate that morning moderate intensity exercise acutely reduces glycaemia
 404 in people with type 2 Diabetes also being prescribed metformin. While evening exercise had
 405 no effect upon glycaemia. The acute reduction of glycaemia in the morning trial was apparently
 406 driven by people who consumed metformin before breakfast, rather than after breakfast.
 407 Indeed, morning exercise combined with pre-breakfast metformin persistently reduced AUC
 408 glucose compared to morning exercise combined with post-breakfast metformin up to the final
 409 week (week 6) of the intervention. In this crossover trial, there was no significant difference in
 410 exercise intensity, caloric intake or total physical activity between the arms of the trial (morning
 411 vs evening exercise). These findings support the assertion that an interaction with intrinsic
 412 circadian biology may be linked to the observed effects.

413 Interestingly, we observed that the acute morning exercise decrease in glycaemia was
 414 apparently driven by people who consumed metformin before breakfast rather than after
 415 breakfast. Many people taking metformin struggle to maintain regular physical activity [15],
 416 which may be a result of a lower tolerance of exercise when metformin is concomitant [16].

417 Furthermore, metformin may interfere with the glucose-lowering effect of acute exercise [11,
418 12]. Therefore, identifying strategies to optimise concomitant prescription of these therapies
419 is essential. Our data suggests that it may be possible to optimise timing of these concomitant
420 therapies to augment their therapeutic effect. It should be noted that these specific data in the
421 current study are not crossover, however, the magnitude of difference (33% decreased AUC
422 glucose in pre-breakfast group, Figure 8) suggests a real effect. Additionally, an interaction
423 effect on glycaemia between morning exercise and pre-breakfast metformin intake appeared
424 to persist throughout the trial since the group taking metformin before breakfast had lower
425 AUC glucose than the post breakfast group into week 6 of the morning exercise intervention.
426 These findings have parallels to previous data that suggest consuming metformin before a
427 meal improved efficacy upon glycaemic regulation [17]. This effect on glycaemia may be partly
428 related to metformin's pharmacokinetic interaction with meal intake and intrinsic circadian
429 rhythms. For example, compared with the fasting state, bioavailability of metformin is 24%
430 lower, and the peak concentration delayed about 37 min when an 850 mg tablet is
431 administered with food [18]. Additionally, metformin's pharmacology significantly depends on
432 time-of-day in humans, which may be related to glomerular filtration rate, renal plasma flow
433 (RPF) and renal organic cation transporter (OCT) 2 activity [19]. Although the half-life of
434 metformin in the blood is relatively long (~18 hours depending on dose/method [20]), less is
435 known regarding accumulation in skeletal muscle, a key organ in the response to exercise [1].
436 It is known that concomitant exercise alters the pharmacokinetics of acute metformin
437 administration [16, 20], with differing skeletal muscle concentrations of metformin before,
438 during and after exercise [16]. It is plausible then, that exercise at different times of the day in
439 addition to timing of metformin intake may interact with the pharmacokinetics and glycaemic
440 modulating effects of metformin. This is supported by our findings since we observed a
441 glucose lowering effect of pre-breakfast metformin only during morning exercise periods of the
442 trial. Thus, further research should aim to fully elucidate the interaction between meal-timing,
443 exercise and medication intake.

444 As described above, skeletal muscle plays a key role in the metabolic response to exercise,
445 and this organ has an intrinsically disrupted rhythm in people with type 2 Diabetes [9].
446 However, it is plausible that metformin treatment may interact with skeletal muscle circadian
447 metabolism to alter time-of-day exercise effects observed in other studies in people with
448 impaired metabolism. Supportive of this is the lack of effect upon glycaemia in response to
449 exercise at different times of the day in people who are metabolically healthy [10] and who
450 presumably do not have disrupted metabolic circadian rhythms. However, the aforementioned
451 study [10] only monitored response to a single bout of exercise, while the current study was a
452 16-week trial in which participants did two 6-week training periods. Moderate intensity exercise
453 did not increase glycaemia in people with type 2 Diabetes being prescribed metformin. These
454 data indicate that in terms of glycaemic response, morning moderate intensity exercise is not
455 deleterious in people with type 2 diabetes being prescribed metformin and does not
456 exacerbate the dawn phenomenon in the same manner as HIIT [2].

457 Indeed, exercise modality may interact with circadian rhythm to alter exercise outcomes. High-
458 intensity exercise capacity is consistently higher in the afternoon/evening compared to
459 morning, while diurnal differences in exercise capacity are less clear with moderate intensity
460 exercise [21]. This phenomenon may underlie the findings of Teo et al. (2020), who found no
461 time-of-day differences in glycaemic outcomes in people with type 2 diabetes in response to
462 combined walking exercise and resistance training [13]. This exercise modality [13] contrasts
463 with the HIIT protocol used in previous studies with conflicting findings [2]. However, it should
464 be noted that Teo et al. (2020) did not measure glycaemic outcomes in a circadian manner
465 [13]. Whereas, in the current study we have measured 24-hour glucose over a total period of
466 10-weeks. Additionally, participants completed moderate intensity exercise outdoors in

467 Scotland, which may influence diurnal outcomes compared to exercise protocols completed
468 at a higher intensity or in a different environment. In a laboratory setting, fifty minutes of
469 walking at 3 different times of day and at different timing in relation to meals did not lower 24-
470 hour glucose concentrations in people with type 2 diabetes [22]. Together with the results from
471 the current study, these data suggest that moderate intensity exercise may not give rise to
472 time-of-day dependent glycaemic perturbations of the same magnitude as high intensity
473 exercise.

474 The current study had some limitations. Our prior statistical power calculations suggested a
475 sample size of 30 in order to detect differences in hour-by-hour glucose readings. Although
476 we met our recruitment target, we had a higher-than-expected withdrawal rate, with 18
477 participants eligible for final analysis. We conducted this study mainly during the C-19 global
478 pandemic, which directly and indirectly impacted on participants' ability to complete the 16-
479 week trial. Nevertheless, the strength of our study is the cross-over design, giving greater
480 statistical power than a cross-sectional design. We aimed to recruit people with type 2 diabetes
481 who were being prescribed metformin monotherapy, *i.e.* no other glycaemic regulating
482 pharmaceutical treatments. This criterium allowed us to investigate a time-of-day exercise
483 interaction with metformin treatment specifically, rather than being confounded by other
484 pharmaceutical treatments. As previously noted, metformin timing intake was not a primary
485 outcome of this study, and therefore our comparisons between different metformin intake
486 timings are not crossover. Thus, it is possible that existing differences in glycaemic regulation
487 between groups are responsible for some of the observed differences (*e.g.* Supplementary
488 table 4). However, it is likely that metformin intake timing is highly habitual, and it is plausible
489 that participants who habitually take metformin before breakfast may experience better long-
490 term control of glycaemia as a direct result. A further strength of the study was the excellent
491 adherence of participants to the exercise protocol, with >85-90% exercise session completion
492 rate over 6-weeks and no difference in self-monitored exercise intensity between arms of the
493 trial. The advantage of conducting self-monitored exercise trials is that this is likely to better
494 recapitulate many real-world settings in which clinicians' recommendations to exercise are
495 mostly self-monitored rather than monitored by practitioners. Participants were instructed to
496 maintain their normal diet during the trial, and total caloric intake was not different between
497 arms of the trial, indicating adherence to this instruction. However, it should be noted that
498 dietary intake was self-reported.

499 In summary, our study demonstrates an acute decrease in glycaemia in response to morning
500 exercise in people with type 2 diabetes also being prescribed metformin. The reduction of
501 glycaemia was driven by participants who consumed metformin before breakfast, rather than
502 after breakfast, indicating an interaction between meal-timing, metformin intake and exercise.
503 In this trial we monitored diet, exercise intensity, and physical activity throughout the trial, none
504 of which appeared to contribute to the time-of-day dependent effect of exercise on glycaemia.
505 Many people being prescribed metformin struggle to maintain regular physical activity [15],
506 and metformin may interfere with the glucose-lowering effect of acute exercise [11, 12]. Thus,
507 finding strategies to augment the therapeutic effect of these treatments when concomitant is
508 essential in the management of type 2 diabetes. Our research indicates that it may be possible
509 to optimise the timing recommendations for concomitant exercise and metformin treatment.
510 Specifically, our findings suggest that morning moderate intensity exercise combined with pre-
511 breakfast metformin intake may benefit the management of glycaemia in people with type 2
512 diabetes.

513 **5. Acknowledgements**

514 We would like to thank Amanda Cardy from the NRS Primary Care Network for her help in
515 recruiting participants. We would also like to thank Dr Graham Horgan of Biomathematics &
516 Statistics Scotland (BIOSS) for his support with statistical analysis.

517

518 **6. Funding**

519 This study was funded by a European Foundation for the Study of Diabetes/Lilly Young
520 Investigator Award and an NHS Grampian Endowment Research Grant, both to B.M.G.
521 B.M.G. was also supported by a fellowship from the Novo Nordisk Foundation
522 (NNF19OC0055072). B.J.P.C. was supported by a Mexican Government CONAHCyT PhD
523 Studentship (CVU: 516989).

524

525 **7. Data availability**

526 Raw data underlying all figures in this manuscript have been deposited publicly:
527 [10.6084/m9.figshare.24081417](https://doi.org/10.6084/m9.figshare.24081417)

528

529 **8. References**

- 530 1. Gabriel BM, Zierath JR (2017) The Limits of Exercise Physiology: From Performance
531 to Health. *Cell Metab.* 25:1000–1011
- 532 2. Savikj M, Gabriel BM, Alm PS, et al (2019) Afternoon exercise is more efficacious
533 than morning exercise at improving blood glucose levels in individuals with type 2
534 diabetes: a randomised crossover trial. *Diabetologia* 62(2):233–237.
535 <https://doi.org/10.1007/s00125-018-4767-z>
- 536 3. Konopka AR, Laurin JL, Schoenberg HM, et al (2019) Metformin inhibits mitochondrial
537 adaptations to aerobic exercise training in older adults. *Aging Cell* 18(1):e12880.
538 <https://doi.org/10.1111/ace1.12880>
- 539 4. Saeedi P, Petersohn I, Salpea P, et al (2019) Global and regional diabetes
540 prevalence estimates for 2019 and projections for 2030 and 2045: Results from the
541 International Diabetes Federation Diabetes Atlas, 9th edition. *Diabetes Res Clin Pract*
542 157. <https://doi.org/10.1016/J.DIABRES.2019.107843>
- 543 5. van der Velde JHPM, Boone SC, Winters-van Eekelen E, et al (2023) Timing of
544 physical activity in relation to liver fat content and insulin resistance. *Diabetologia*
545 66(3):461–471. <https://doi.org/10.1007/S00125-022-05813-3>
- 546 6. Qian J, Xiao Q, Walkup MP, et al (2023) Association of Timing of Moderate-to-
547 Vigorous Physical Activity With Changes in Glycemic Control Over 4 Years in Adults
548 With Type 2 Diabetes From the Look AHEAD Trial. *Diabetes Care*.
549 <https://doi.org/10.2337/DC22-2413>
- 550 7. Moholdt T, Parr EB, Devlin BL, Debik J, Giskeødegård G, Hawley JA (2021) The
551 effect of morning vs evening exercise training on glycaemic control and serum
552 metabolites in overweight/obese men: a randomised trial. *Diabetologia* 64(9):2061–
553 2076. <https://doi.org/10.1007/s00125-021-05477-5>
- 554 8. Mancilla R, Brouwers B, Schrauwen-Hinderling VB, Hesselink MKC, Hoeks J,
555 Schrauwen P (2021) Exercise training elicits superior metabolic effects when

- 556 performed in the afternoon compared to morning in metabolically compromised
557 humans. *Physiol Rep* 8(24). <https://doi.org/10.14814/phy2.14669>
- 558 9. Gabriel BM, Altıntaş A, B Smith JA, et al (2021) Disrupted circadian oscillations in
559 type 2 diabetes are linked to altered rhythmic mitochondrial metabolism in skeletal
560 muscle. *Sci Adv* 7. <https://doi.org/10.1126/SCIADV.ABI9654>
- 561 10. Tanaka Y, Ogata H, Park I, et al (2021) Effect of a single bout of morning or afternoon
562 exercise on glucose fluctuation in young healthy men. *Physiol Rep* 9(7):e14784.
563 <https://doi.org/https://doi.org/10.14814/phy2.14784>
- 564 11. Boulé NG, Robert C, Bell GJ, et al (2011) Metformin and exercise in type 2 diabetes:
565 examining treatment modality interactions. *Diabetes Care* 34(7):1469–1474.
566 <https://doi.org/10.2337/DC10-2207>
- 567 12. Sharoff CG, Hagobian TA, Malin SK, et al (2010) Combining short-term metformin
568 treatment and one bout of exercise does not increase insulin action in insulin-resistant
569 individuals. *Am J Physiol Endocrinol Metab* 298(4).
570 <https://doi.org/10.1152/AJPENDO.00517.2009>
- 571 13. Teo SYM, Kanaley JA, Guelfi KJ, Marston KJ, Fairchild TJ (2020) The Effect of
572 Exercise Timing on Glycemic Control: A Randomized Clinical Trial. *Med Sci Sports
573 Exerc* 52(2):323–334. <https://doi.org/10.1249/MSS.0000000000002139>
- 574 14. Fox SM, Naughton JP, Gorman PA (1972) Physical activity and cardiovascular health.
575 II. The exercise prescription: intensity and duration. *Mod Concepts Cardiovasc Dis*
576 41(5):21–24
- 577 15. Krug LM, Haire-Joshu D, Heady SA (1991) Exercise habits and exercise relapse in
578 persons with non-insulin-dependent diabetes mellitus. *Diabetes Educ* 17(3):185–188.
579 <https://doi.org/10.1177/014572179101700314>
- 580 16. Kristensen JM, Lillelund C, Kjøbsted R, et al (2019) Metformin does not compromise
581 energy status in human skeletal muscle at rest or during acute exercise: A
582 randomised, crossover trial. *Physiol Rep* 7(23). <https://doi.org/10.14814/phy2.14307>
- 583 17. Hashimoto Y, Tanaka M, Okada H, et al (2016) Postprandial hyperglycemia was
584 ameliorated by taking metformin 30 min before a meal than taking metformin with a
585 meal; a randomized, open-label, crossover pilot study. *Endocrine* 52(2):271–276.
586 <https://doi.org/10.1007/S12020-015-0786-4>
- 587 18. Sambol NC, Brookes LG, Chiang J, et al (1996) Food intake and dosage level, but not
588 tablet vs solution dosage form, affect the absorption of metformin HCl in man. *Br J
589 Clin Pharmacol* 42(4):510–512. <https://doi.org/10.1111/J.1365-2125.1996.TB00017.X>
- 590 19. Türk D, Scherer N, Selzer D, et al (2023) Significant impact of time-of-day variation on
591 metformin pharmacokinetics. *Diabetologia* 66(6). <https://doi.org/10.1007/S00125-023-05898-4>
- 593 20. Larsen S, Rabøl R, Hansen CN, Madsbad S, Helge JW, Dela F (2012) Metformin-
594 treated patients with type 2 diabetes have normal mitochondrial complex I respiration.
595 *Diabetologia* 55(2):443–449. <https://doi.org/10.1007/s00125-011-2340-0>
- 596 21. Gabriel BM, Zierath JR (2019) Circadian rhythms and exercise — re-setting the clock
597 in metabolic disease. *Nat Rev Endocrinol* 15(4):197–206.
598 <https://doi.org/10.1038/s41574-018-0150-x>
- 599 22. Munan M, Dyck RA, Houlder S, et al (2020) Does Exercise Timing Affect 24-Hour
600 Glucose Concentrations in Adults With Type 2 Diabetes? A Follow Up to the Exercise-
601 Physical Activity and Diabetes Glucose Monitoring Study. *Can J diabetes* 44(8):711-

602

718.e1. <https://doi.org/10.1016/J.JCJD.2020.05.012>