

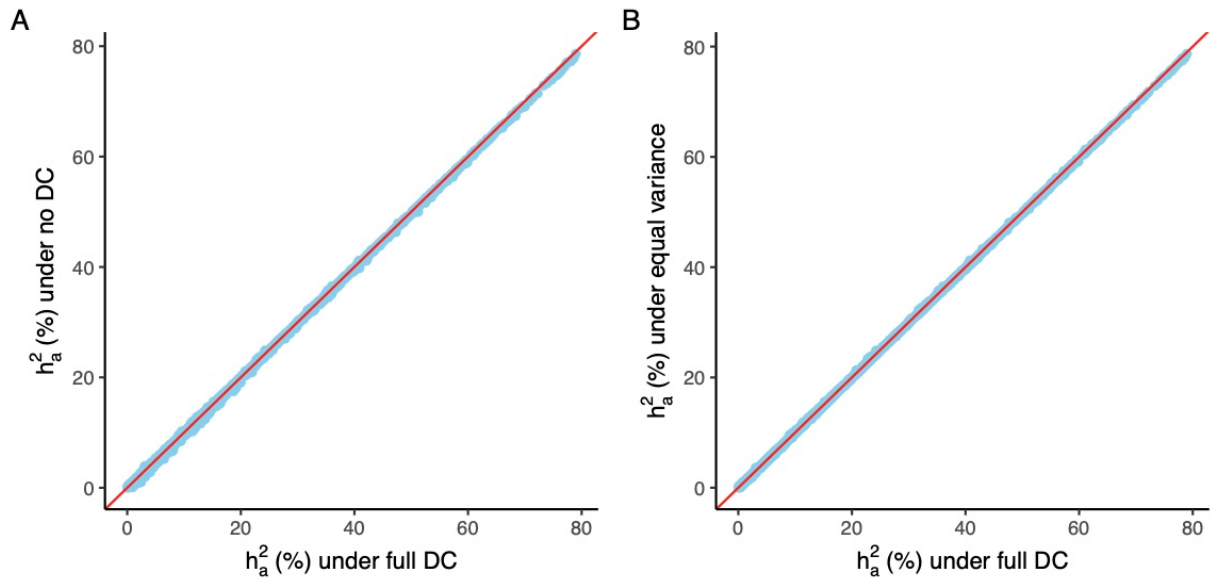
1
2
3
4
5
6

Supplementary Figures for

The pivotal role of the X-chromosome in the genetic architecture of the
human brain

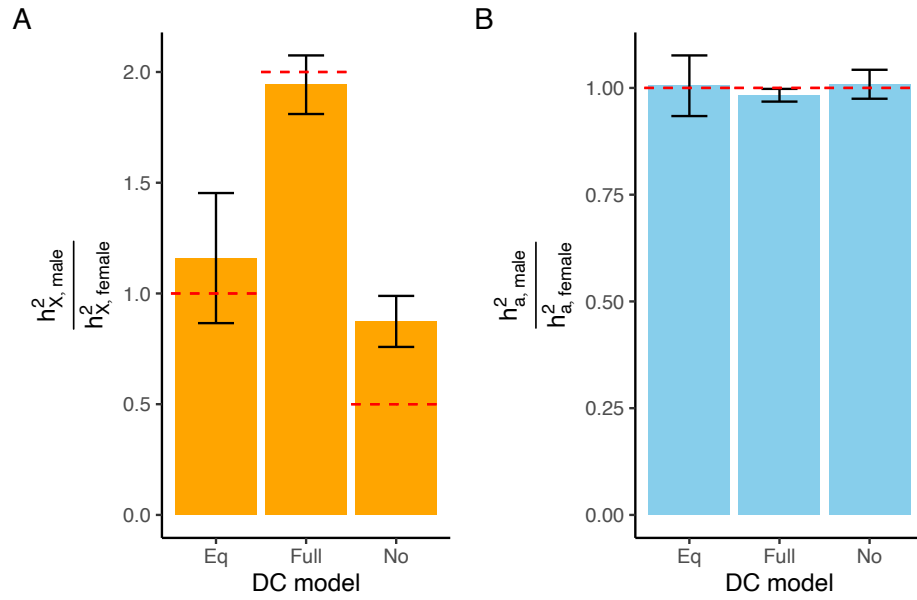
This PDF file includes:

Supplementary Figures 1 to 22 along with the figure legends.



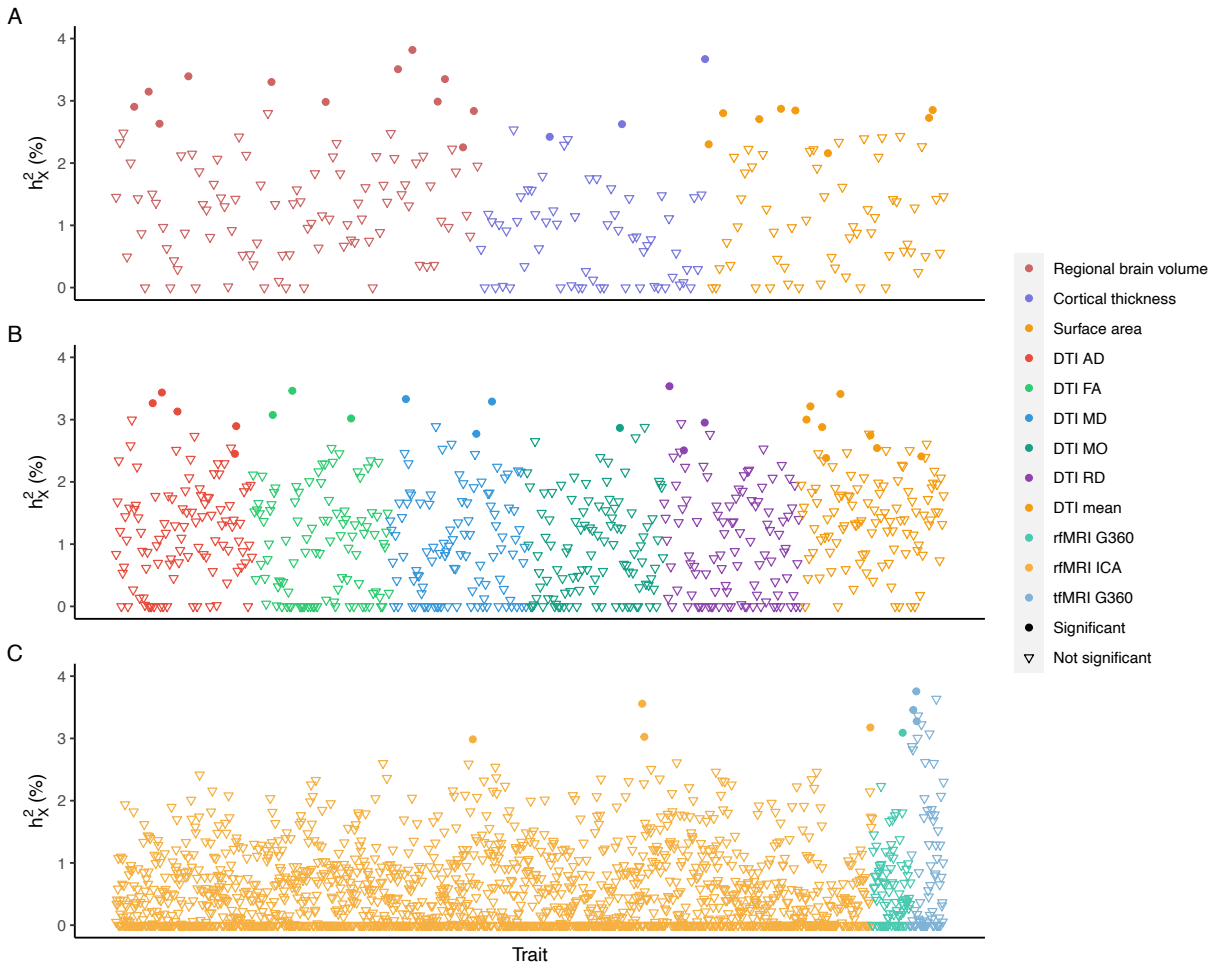
1
2
3
4
5
6

Supplementary Figure 1: Comparison of heritability attributed to autosomes (h_a^2) among DC groups. The h_a^2 is estimated by the model including both GRMs of the autosomes and the X-chromosome. A) Comparison between full DC and no DC. B) Comparison between full DC and equal variance.



1
2
3
4
5
6
7

Supplementary Figure 2: Ratio of sex-specific heritability in DC groups. The red dashed lines are the expectation of ratio by assumption. The 95% confidence intervals were computed via bootstrap. A) The ratio for heritability attributed to the X-chromosome. The expectation of ratio for equal variance, full DC, and no DC is 1, 2, and 0.5, respectively. B) The ratio for heritability attributed to autosomes. The expectation of ratio for all three groups is 1.



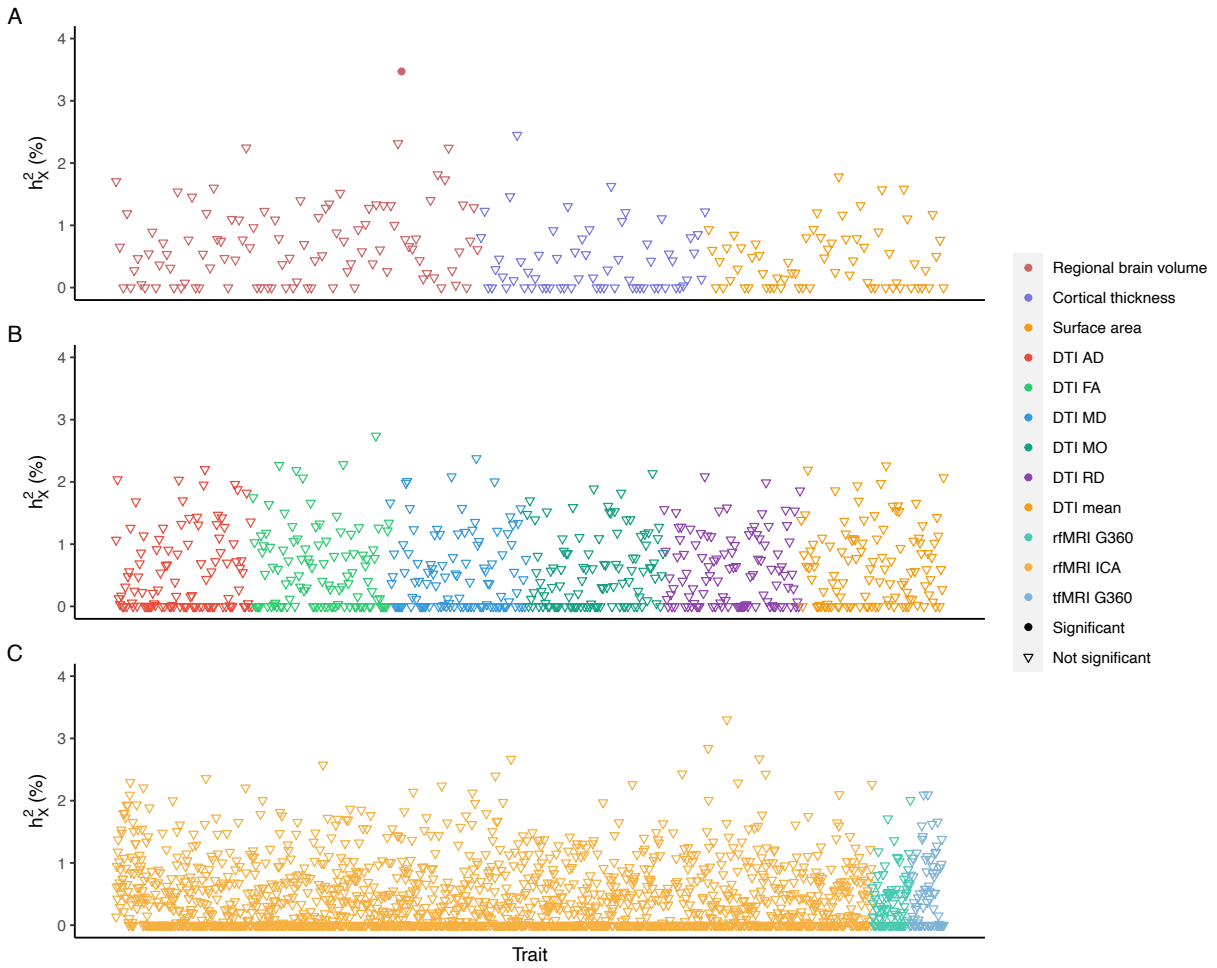
1

2 **Supplementary Figure 3: Estimated heritability attributed to the X-chromosome (h_X^2) using males.**

3 The different sets of traits are distinguished by color and traits with significant h_X^2 are shown in solid

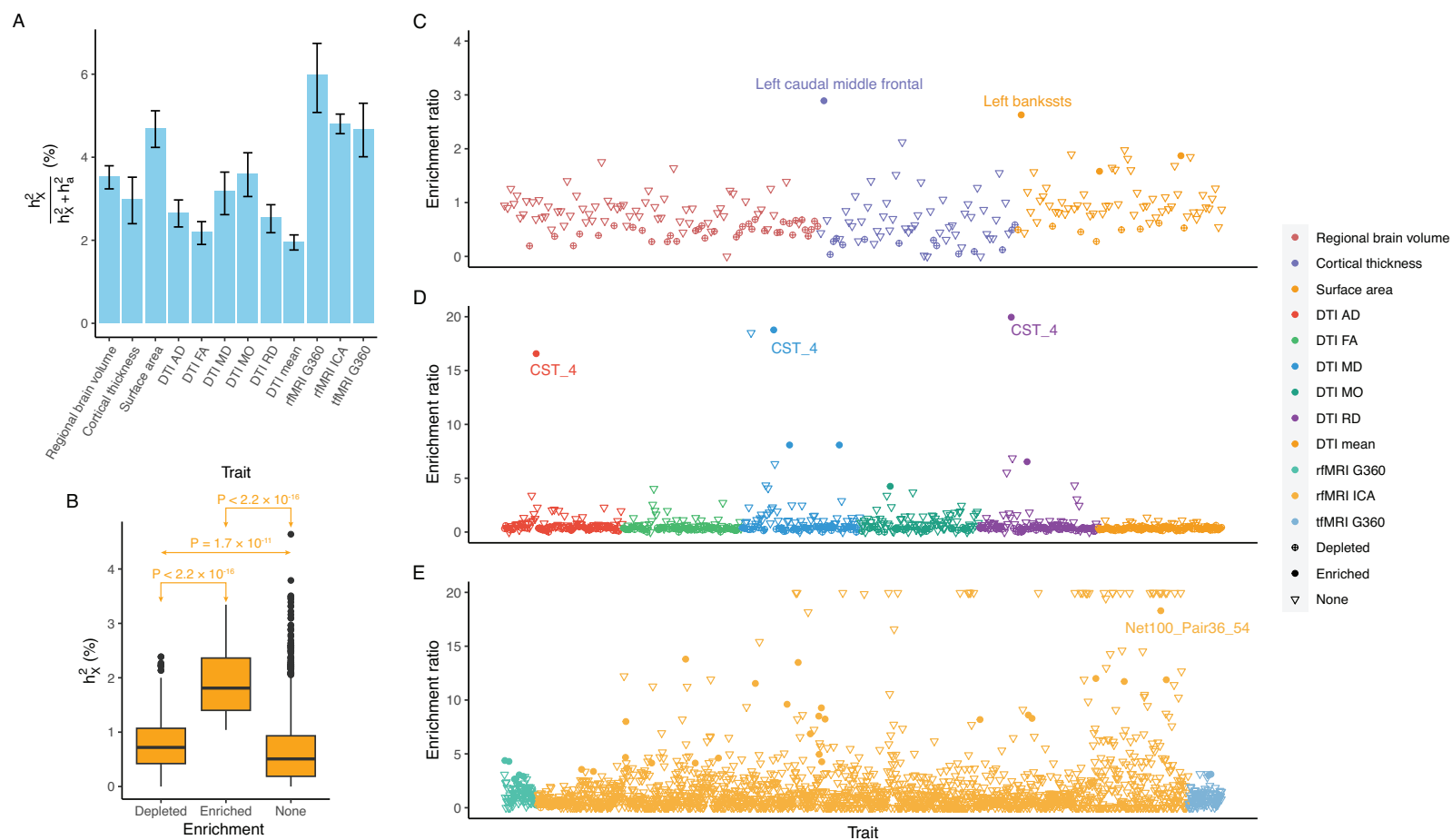
4 circles. A) Structural MRI. B) Diffusion MRI. C) Functional MRI.

5

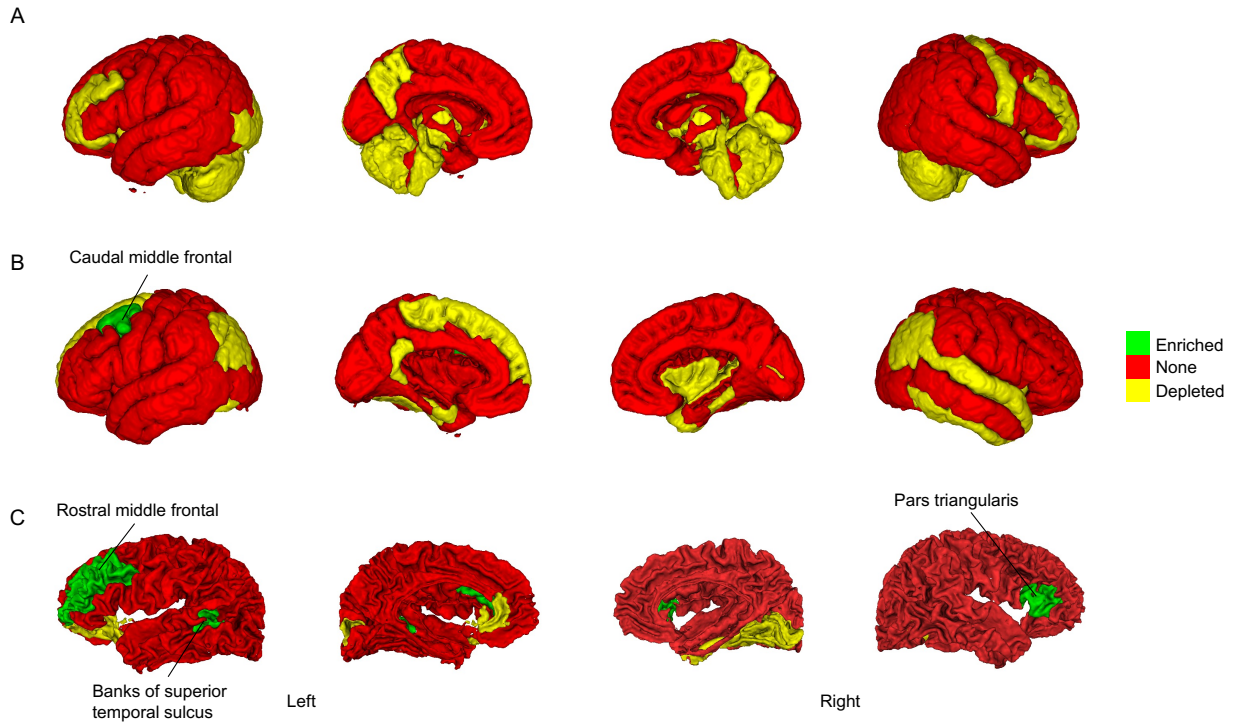


1

2 **Supplementary Figure 4: Estimated heritability attributed to the X-chromosome (h_X^2) using**
 3 **females.** The different sets of traits are distinguished by color and traits with significant h_X^2 are shown in
 4 solid circles. A) Structural MRI. B) Diffusion MRI. C) Functional MRI.

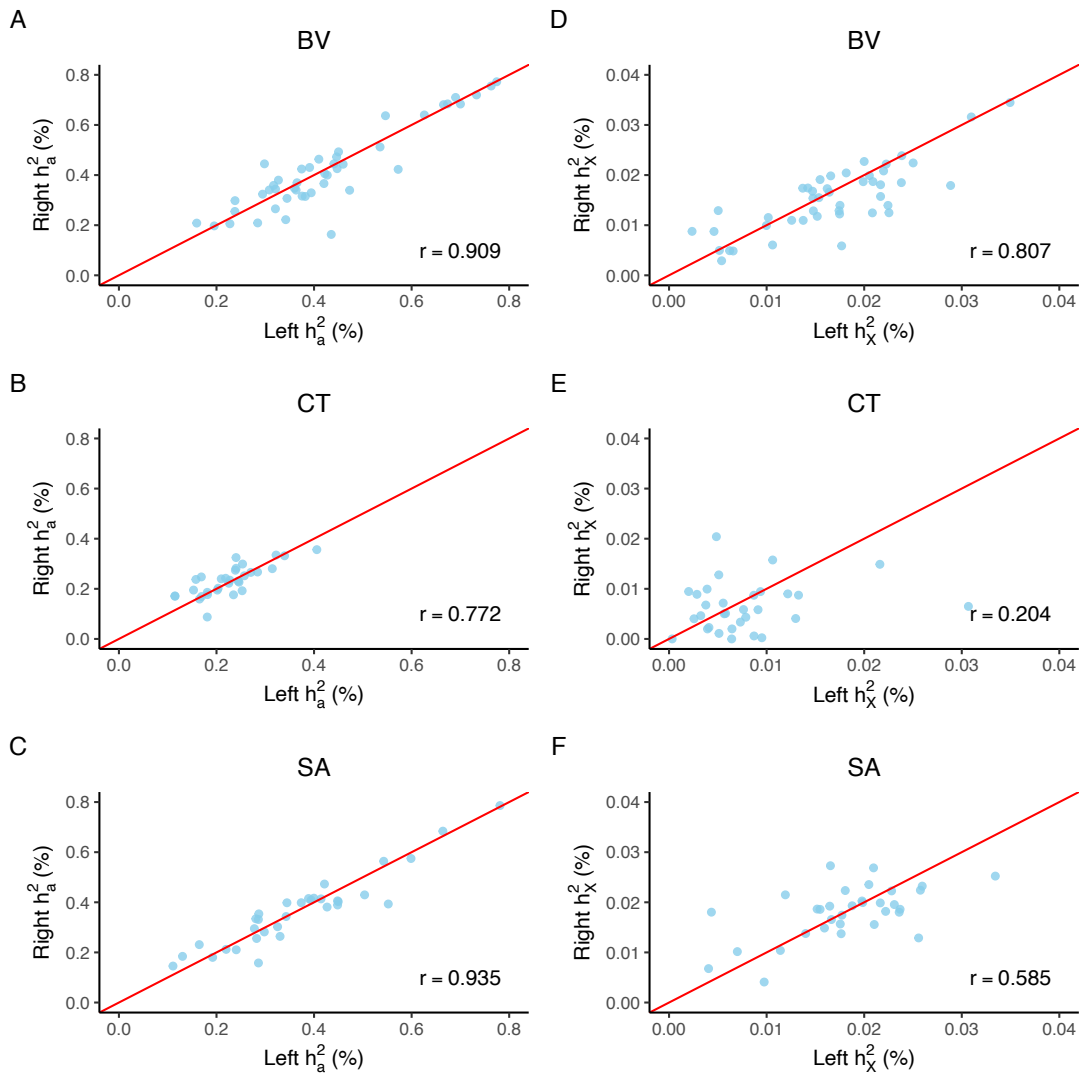


1
2 **Supplementary Figure 5: Enrichment analysis of heritability attributed to the X-chromosome (h_X^2) for complex brain imaging traits.** A)
3 Relative contribution of h_X^2 to the total heritability. B) Pairwise comparison of h_X^2 between DC groups. The p-values are the results of the
4 Wilcoxon rank sum test. C)-E) Scatter plot of enrichment ratio of every single trait for sMRI, DTI, and fMRI, respectively. The different sets of
5 traits are distinguished by color and traits with significant signals are shown in circles. Some traits with significantly enriched h_X^2 are annotated on
6 the plot. “CST_4” means the fourth PC of CST evaluated by a particular metric.



1
2
3
4

Supplementary Figure 6: Regional patterning of enrichment status for sMRI traits. Significantly enriched traits were annotated. A) regional BV. B) CT. C) SA.



1

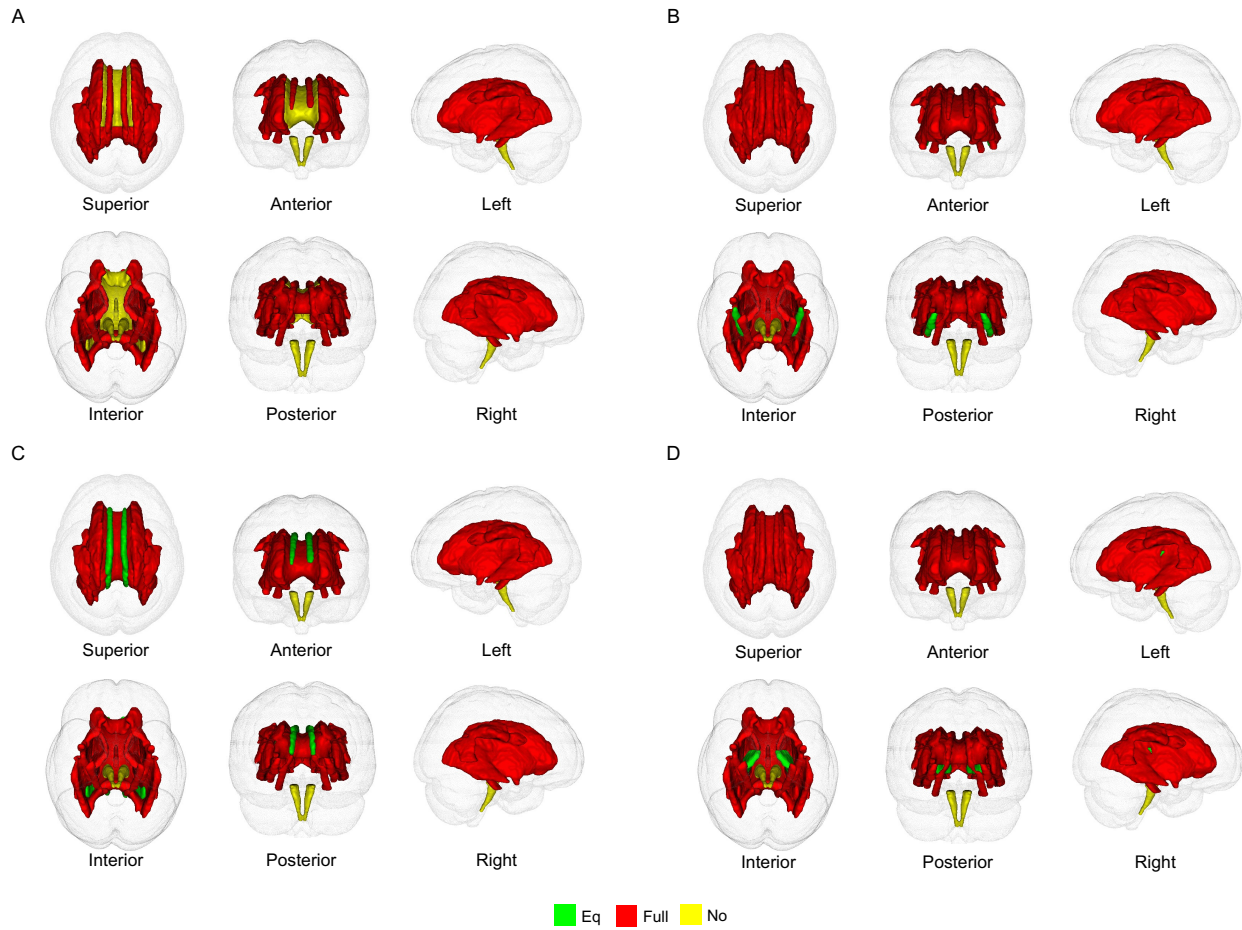
2 **Supplementary Figure 7: Symmetry of heritability between left and right hemispheres for brain**

3 **anatomy.** The Pearson correlation coefficient is annotated on each plot. A)-C) heritability attributed to

4 autosomes. D)-F) heritability attributed to the X-chromosome. Only the coefficient in panel E is not

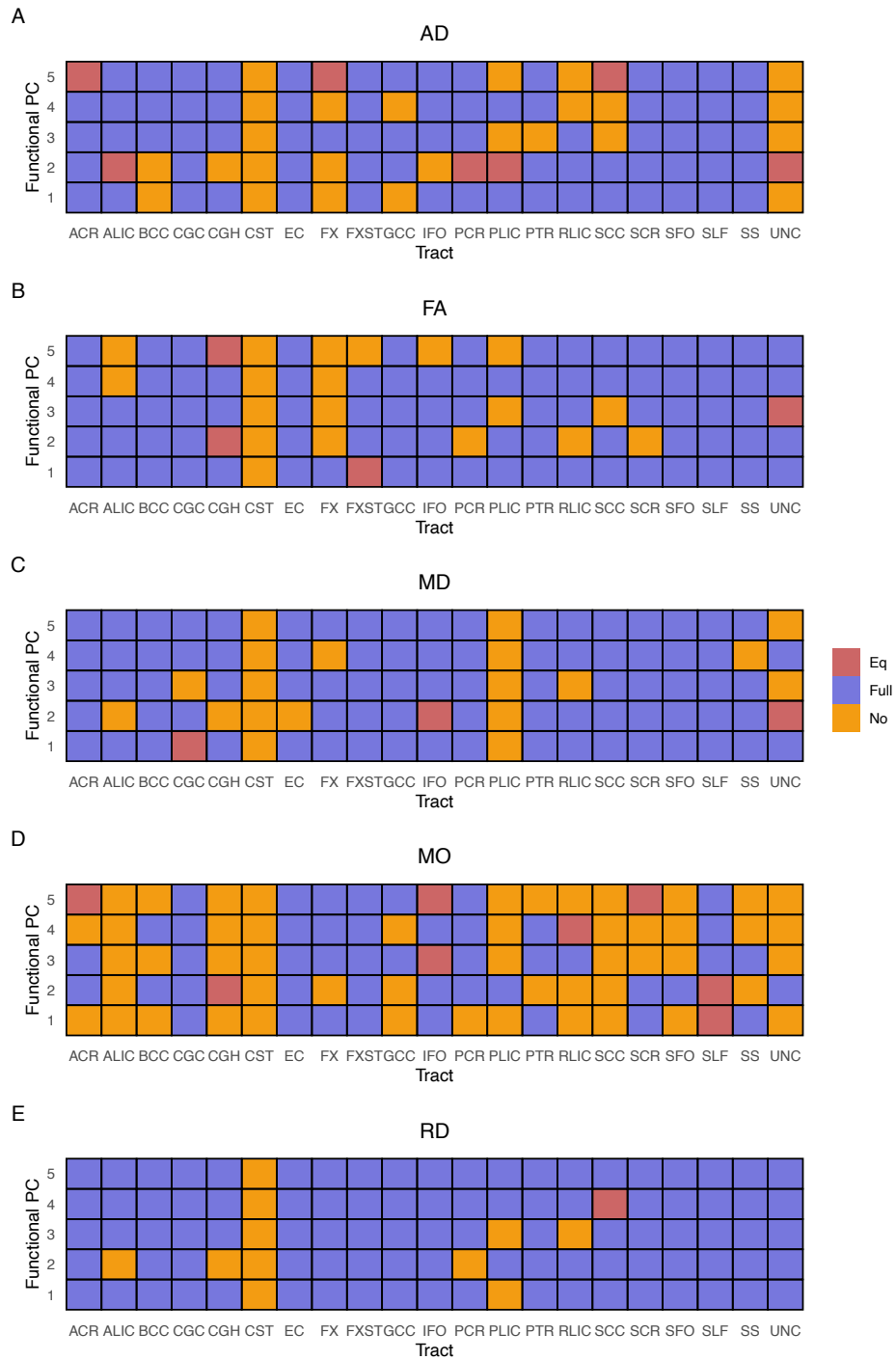
5 significant at 0.05 level (p -value = 0.20).

6

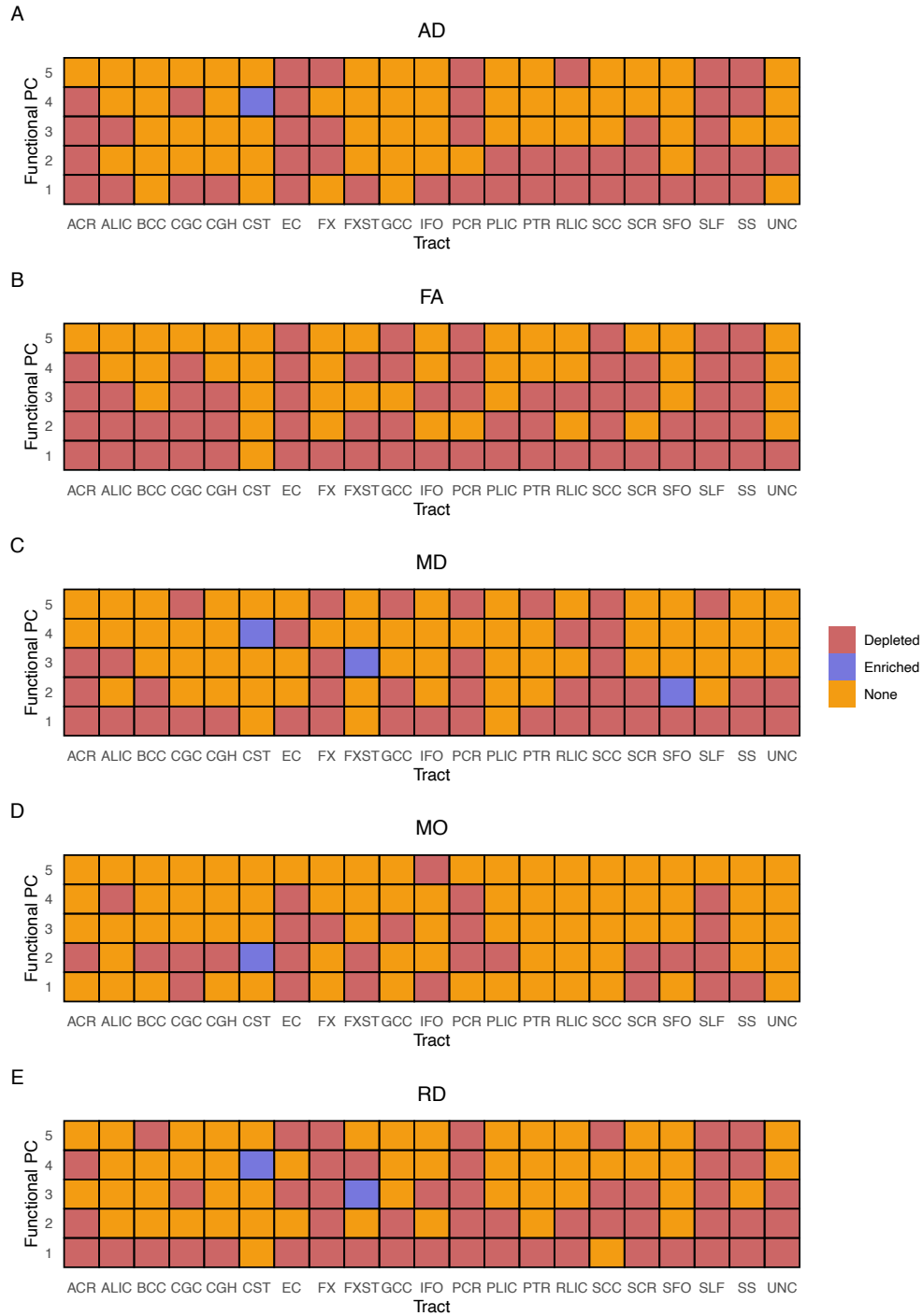


1
2
3
4

Supplementary Figure 8: Atlases of DC of DTI tract-mean traits evaluated by different metrics. A) AD. B) FA. C) MD. D) RD.

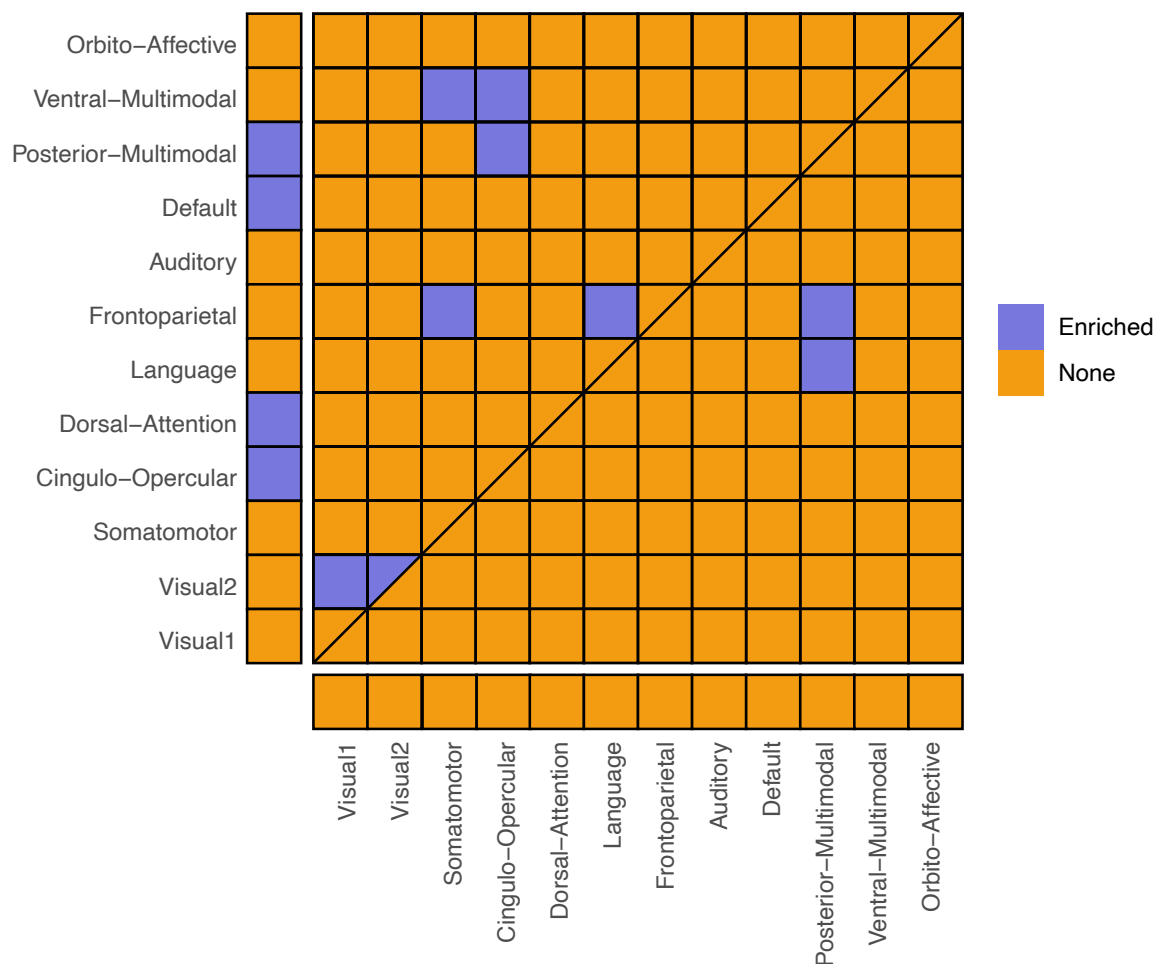


1
 2 **Supplementary Figure 9: Atlases of DC of DTI PC traits evaluated by different metrics. A) AD. B)**
 3 **FA. C) MD. D) MO. E) RD.**
 4

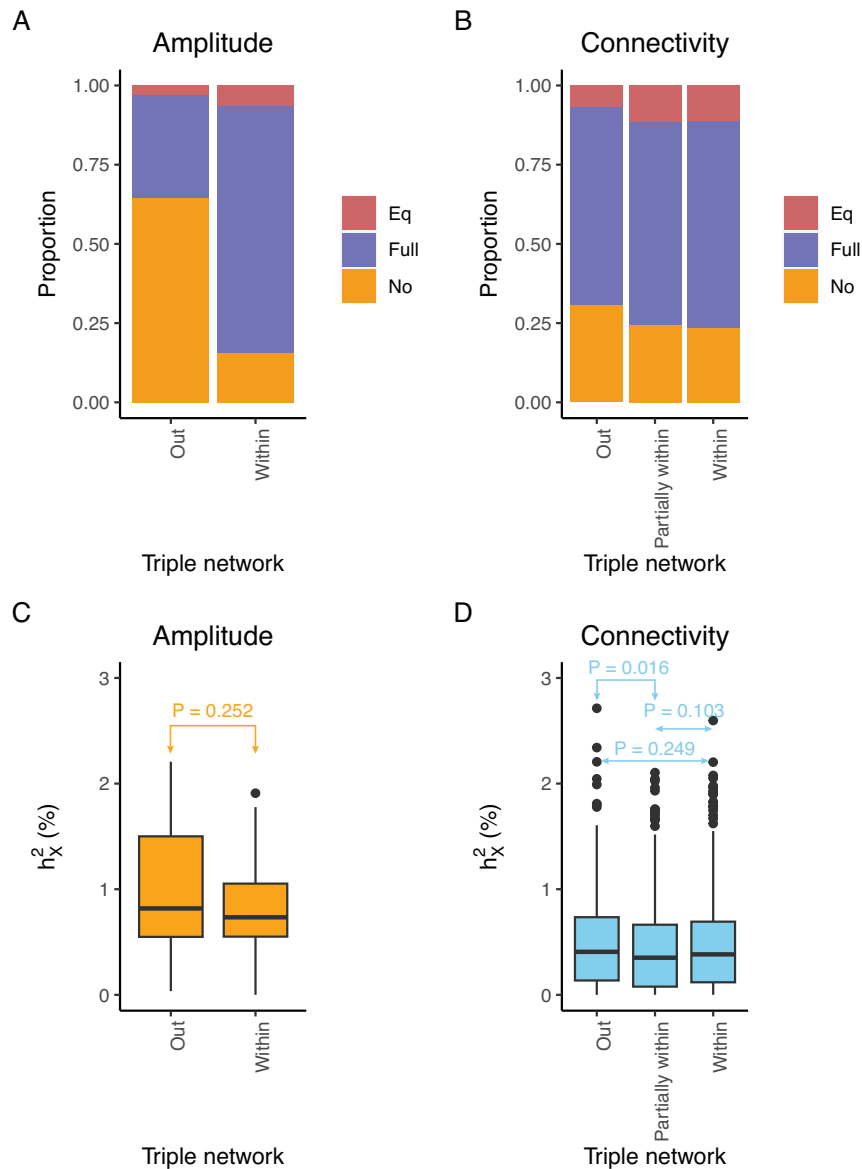


1
2
3
4

Supplementary Figure 10: Atlases of enrichment of DTI PC traits evaluated by different metrics.
A) AD. B) FA. C) MD. D) MO. E) RD.



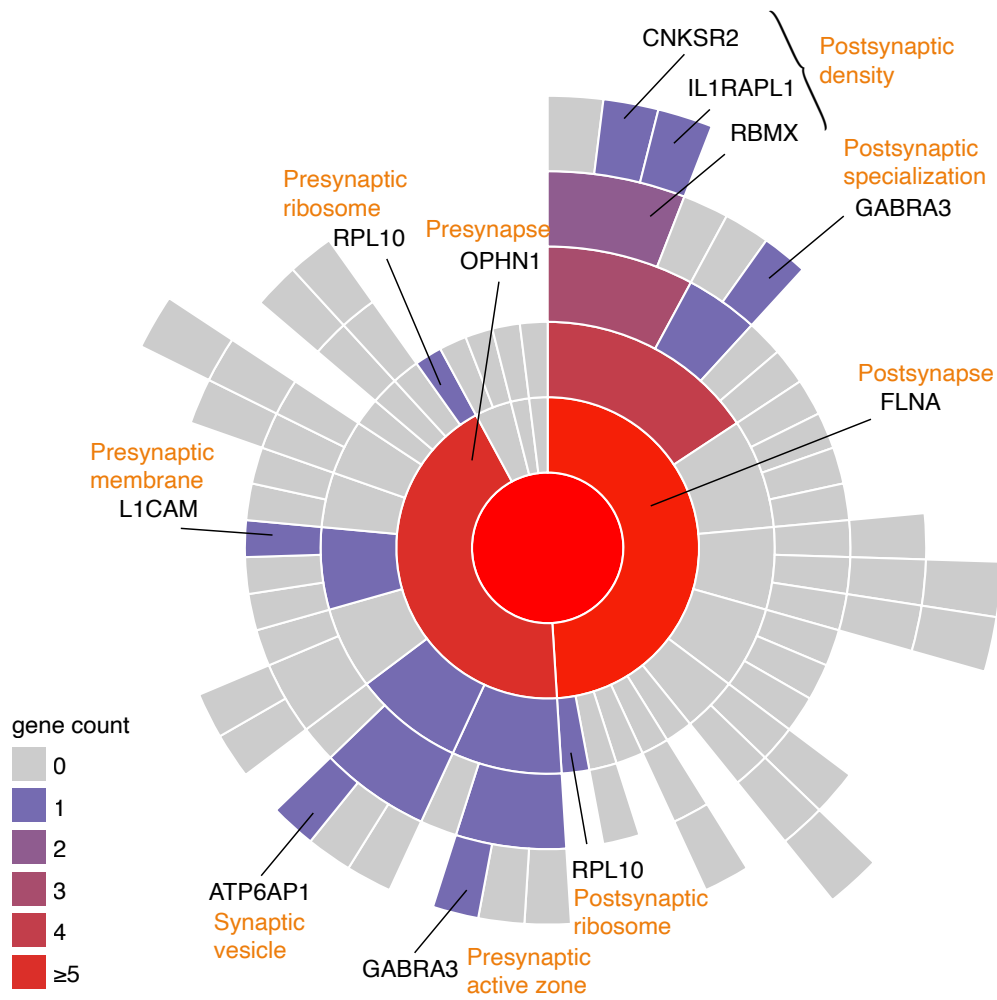
1
2 **Supplementary Figure 11: An atlas of enrichment for fMRI G360 traits.** The upper triangle
3 represents rfMRI while the lower triangle represents tfMRI. The diagonal extending from the bottom left
4 to the top right, is split into two triangles: the upper one represents enrichment for intra-connectivity of
5 rfMRI and the lower for tfMRI. Cells on the left margin represent enrichment for amplitude traits for
6 rfMRI, while those at the bottom indicate enrichment for amplitude traits for tfMRI.



1

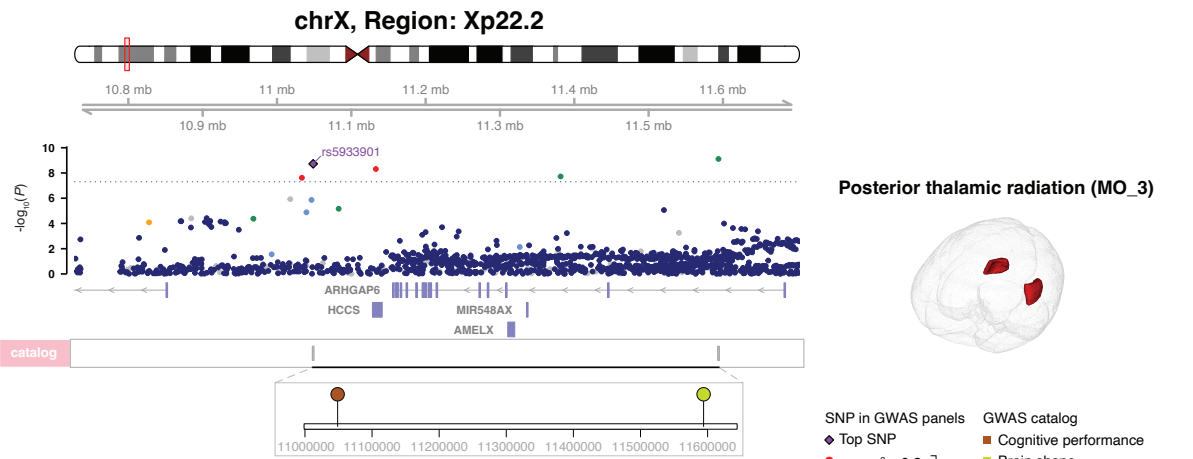
2 **Supplementary Figure 12: Comparison of DC and h_X^2 in groups classified by the triple networks**
 3 **(ICA).** The triple networks are central executive, default mode, and salience networks. Amplitude traits
 4 can be classified as within or out of the triple networks, while functional connectivity traits can be
 5 classified as within, partially within, and out of the triple networks. A)-B), Comparisons of DC. C)-D),
 6 Comparisons of h_X^2 . The p-values are results of the Wilcoxon rank sum test.

7

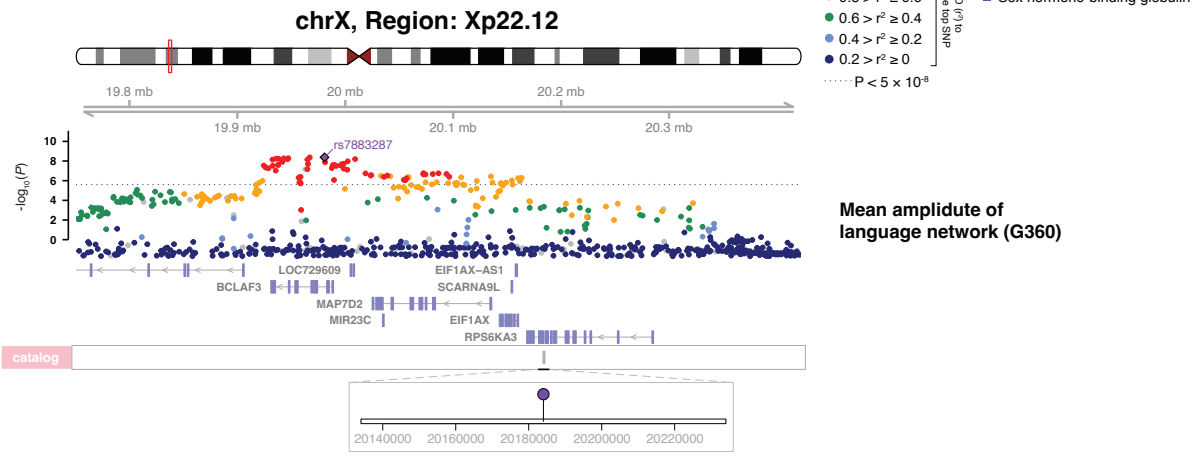


1
 2 **Supplementary Figure 13: Mapping of all functionally mapped genes in FUMA to synaptic**
 3 **locations using SynGO.** Higher-level terms are in the center and child terms are in subsequent rings. The
 4 name of the term (in orange) and genes mapped to the term (in black) are annotated.
 5

A

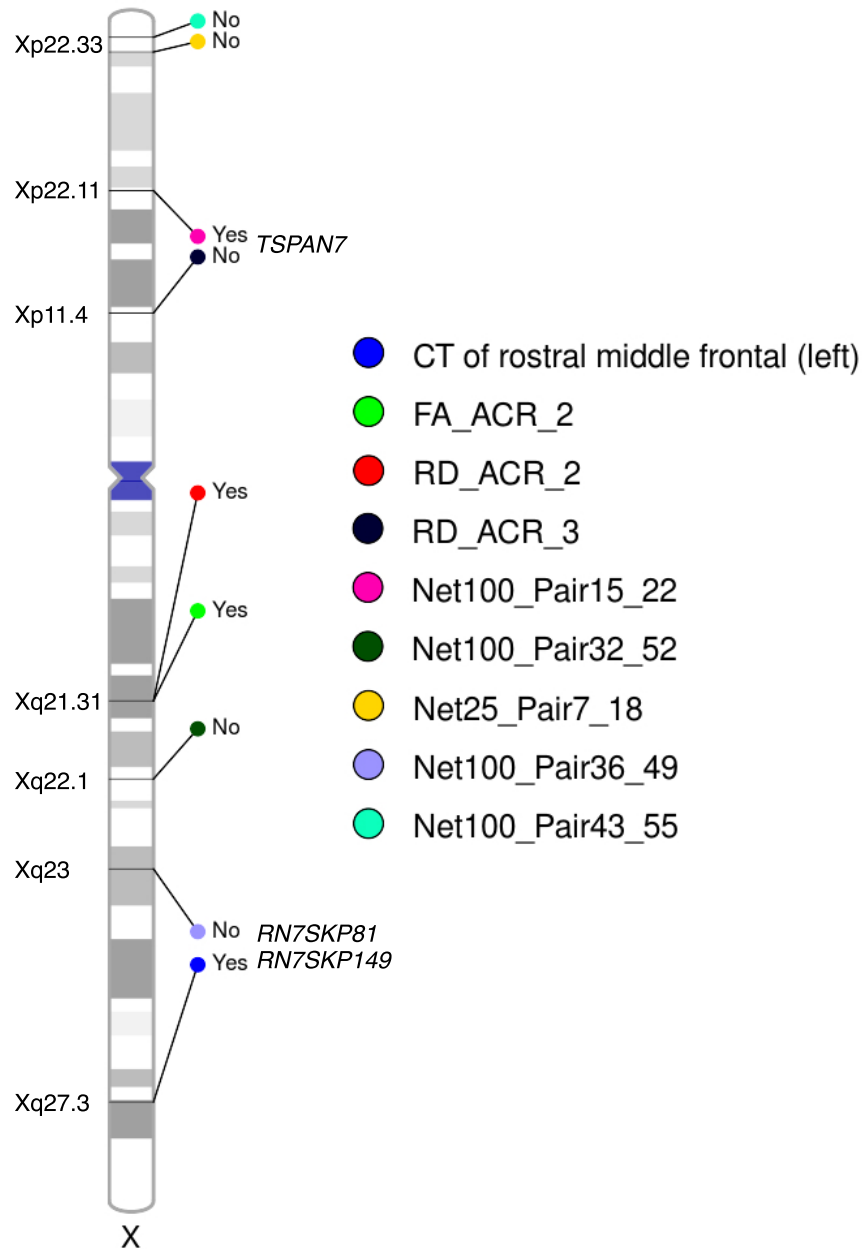


B



1
2
3
4
5
6
7
8
9
10

Supplementary Figure 14: Selected genetic loci with important colocalizations in males. The top lead SNP is the SNP that has the smallest p-value in the locus and passed the 1×10^{-8} threshold. The p-values shown in the figure are unadjusted. The top lead SNP along with all the SNPs in LD ($r^2 > 0.6$) in the same locus are the targets for XWAS results lookup in the NHGRI-EBI GWAS catalog (2023.06). A) The third PC of posterior thalamic radiation evaluated by MO shared genetic architecture with cognitive performance and brain shape at a locus in Xp22.2 indexed by rs5934953. B) The mean amplitude of language network (G360) shared genetic basis with sex hormone-binding globulin (SHBG) at a locus in Xp22.12 indexed by rs7883287.

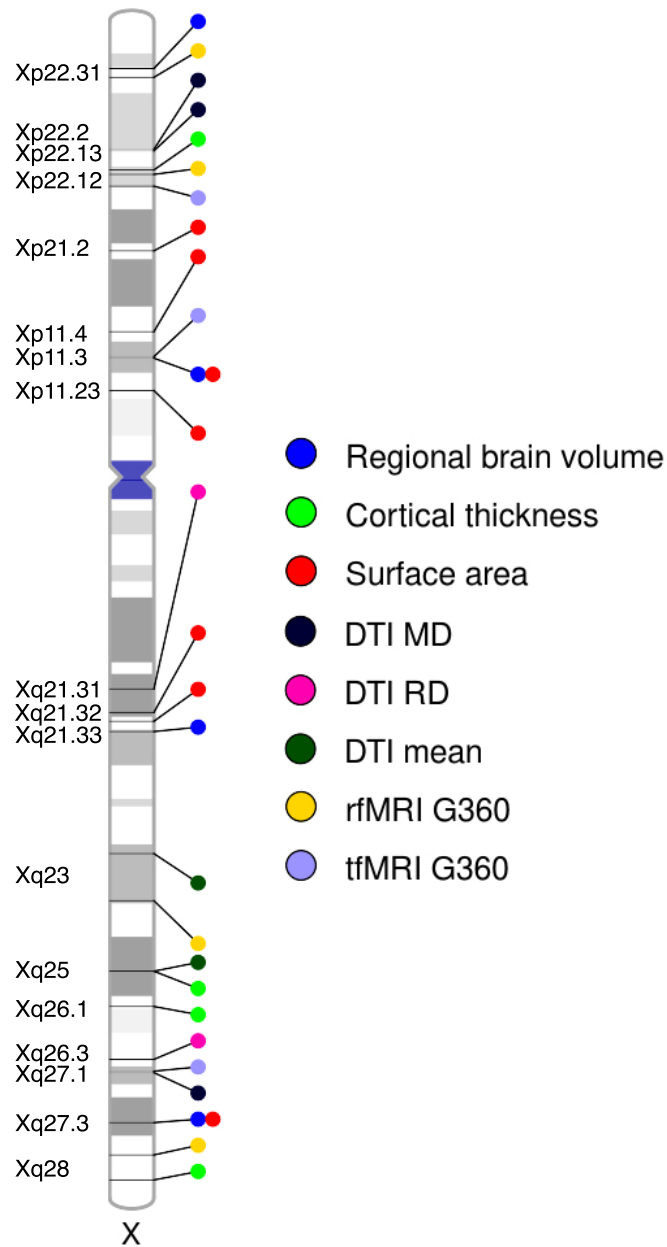


1

2 **Supplementary Figure 15: Genomic loci that exerted significantly different effects between sexes.**

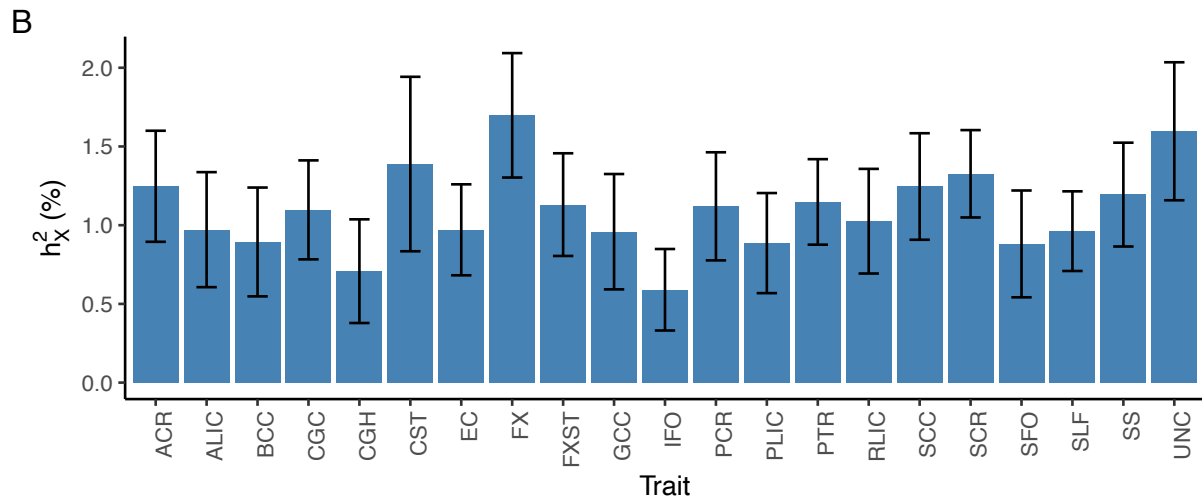
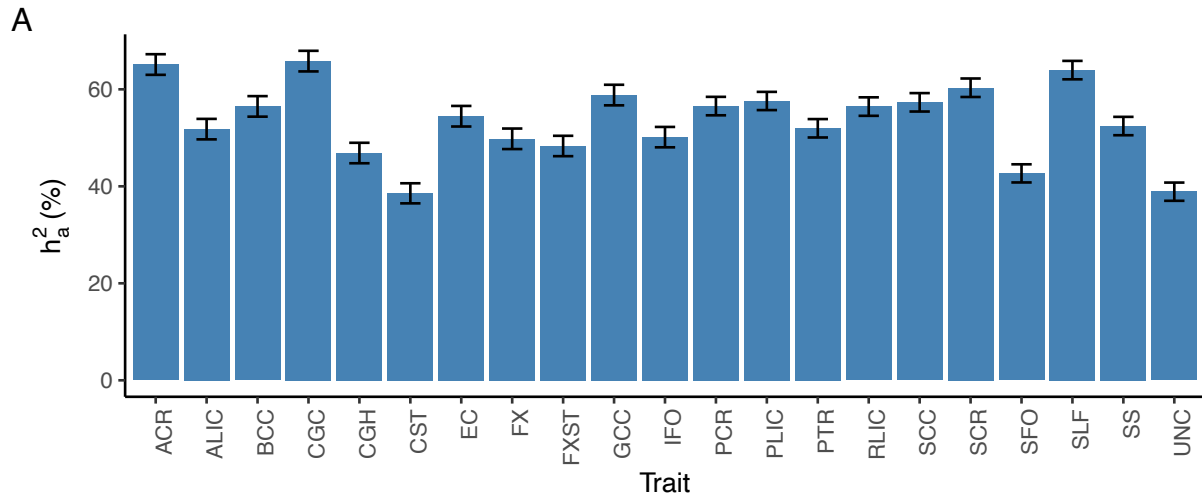
3 Each trait is labeled with a different color. The name of each genomic region is annotated on the
 4 ideogram. “Yes” and “No” mean if the signal can be recovered by meta-analysis of sex-stratified results
 5 using Stouffer’s method. Genes mapped with functional consequences of index SNPs are also annotated
 6 for the corresponding loci. The DTI PC traits are named in format “metrics_tract_PC”. The name
 7 convention of ICA traits refers to Table S1.

8

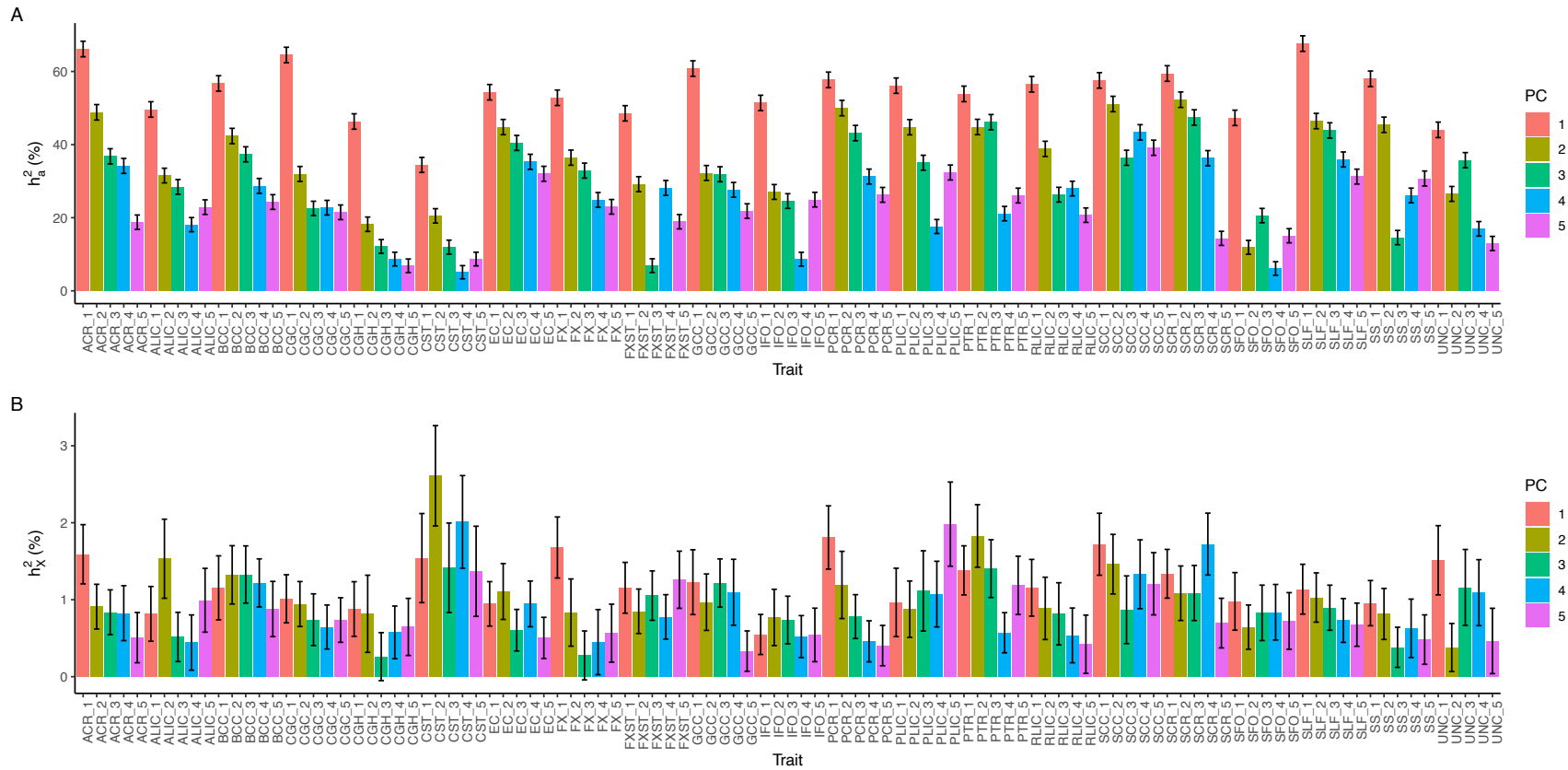


1
 2 **Supplementary Figure 16: Genomic loci that had significantly different profiles between males**
 3 **classified by phenotypic quantiles at distribution tails.** Each set of traits is labeled with a different
 4 color. The name of each genomic region is annotated on the ideogram.

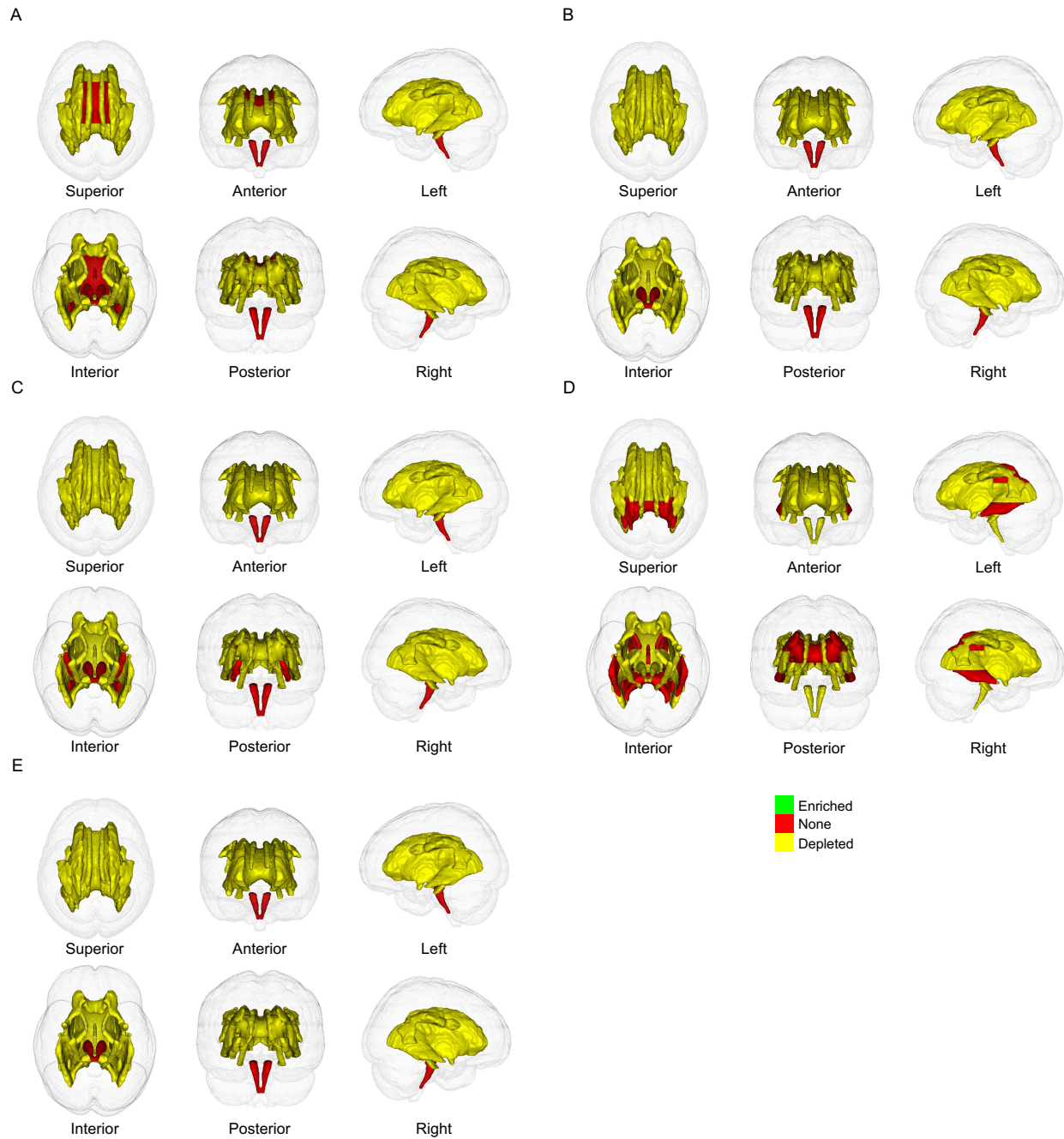
5



1
 2 **Supplementary Figure 17: Heritability estimates of DTI tract-mean traits.** A) Heritability attributed
 3 to autosomes (h_a^2). B) Heritability attributed to the X-chromosome (h_x^2).

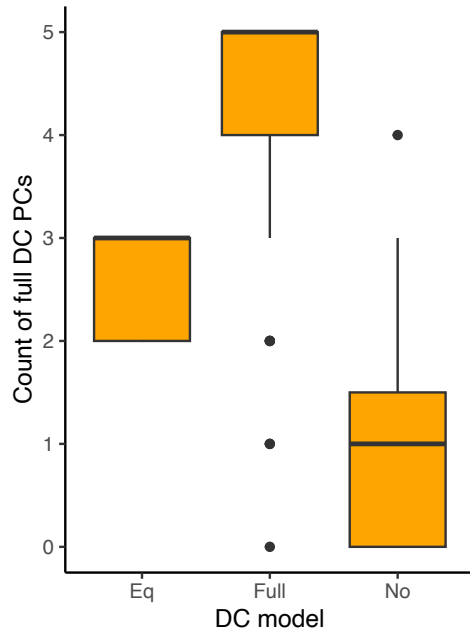


1
2 **Supplementary Figure 18: Heritability estimates of DTI PC traits.** A) Heritability attributed to autosomes (h_a^2). B) Heritability attributed to the
3 X-chromosome (h_x^2).



1
2
3
4

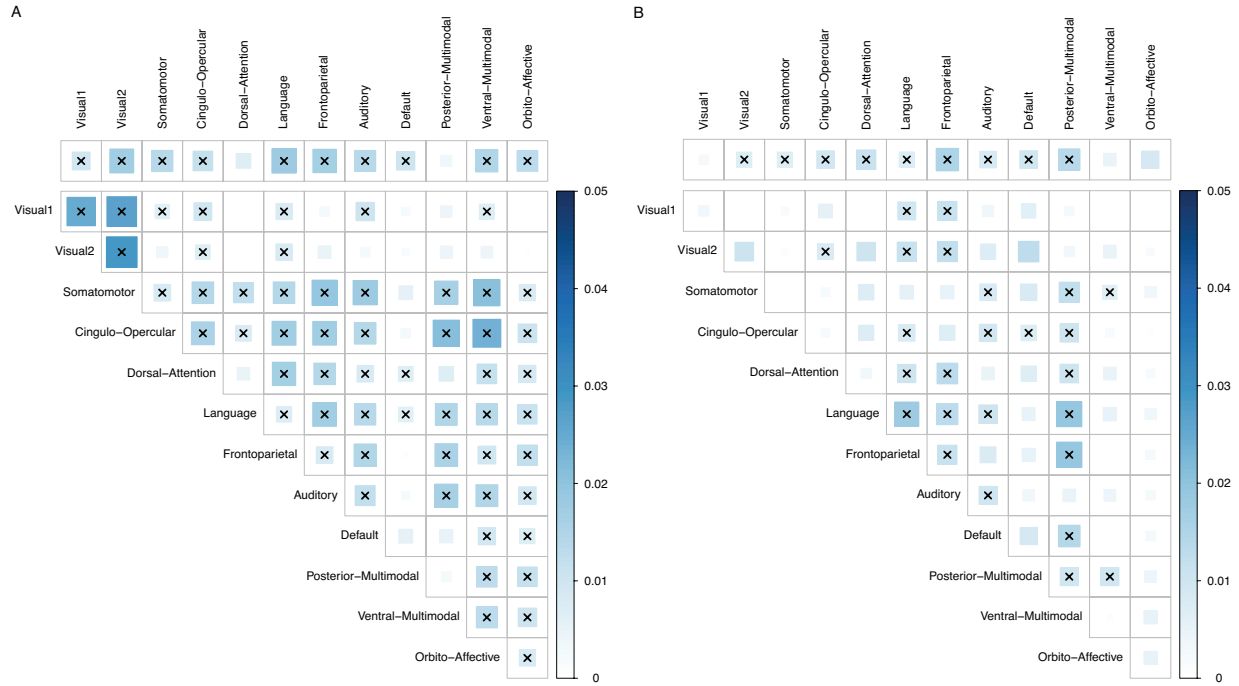
Supplementary Figure 19: Atlases of enrichment of DTI tract-mean traits evaluated by different metrics. A) AD. B) FA. C) MD. D) MO, E) RD.



1

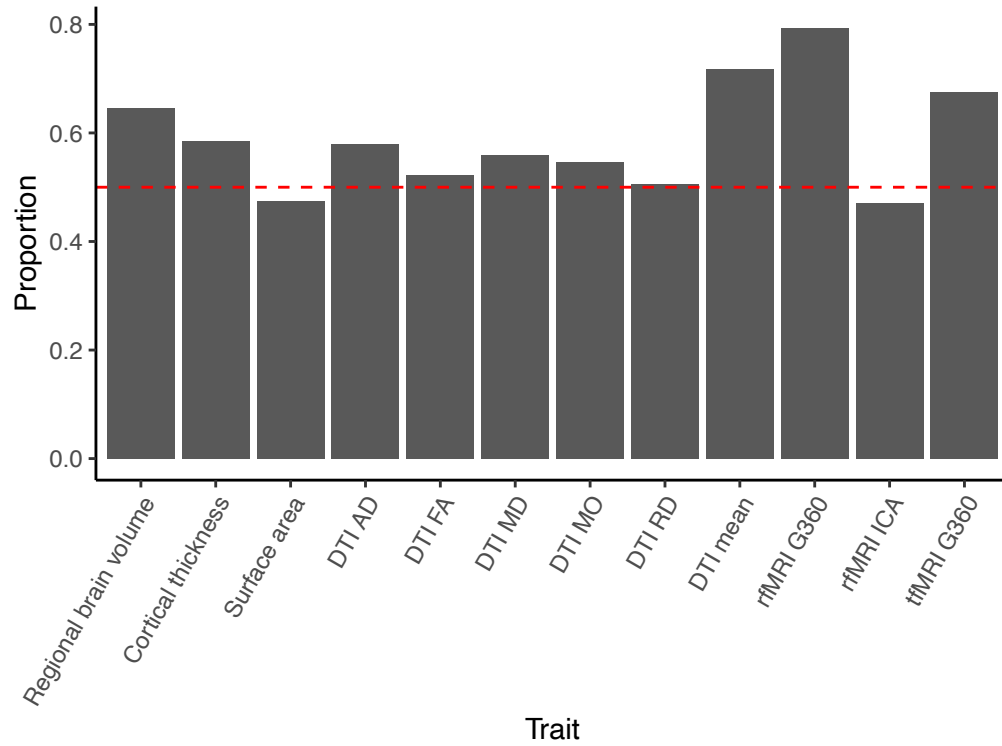
2 **Supplementary Figure 20: Consistency between the number of full DC PCs and the DC of tract-**
3 **mean traits.**

4



1
2
3
4
5

Supplementary Figure 21: Heritability estimates (h_X^2) of fMRI G360 traits. The cells in upper triangle matrix are h_X^2 of mean functional connectivity traits. The cells above the top margin are h_X^2 of mean amplitude traits. Significant traits are annotated by asteroid. A) rfMRI. B) tfMRI.



1

2 **Supplementary Figure 22: Proportion of traits where males have a larger measurement than**

3 **females.** The red dash line represents 0.5.