

1 **Title:** Can long-term COVID-19 vaccination be improved by serological surveillance?: a
2 modeling study for Mozambique

3

4 **Authors:** Carol Y Liu*¹, Kayoko Shioda², Alicia NM Kraay^{3,4}, Sergio Massora⁵, Áuria de Jesus⁵,
5 Arsénia Massinga⁵, Celso Monjane⁶, Saad B Omer⁷, Samuel M Jenness¹, Kristin Nelson¹,
6 Stefan Flasche⁸, Inacio Mandomando⁵, Benjamin A Lopman¹

7

8

9 ¹ Department of Epidemiology, Emory University Rollins School of Public Health, Atlanta, GA, USA

10 ² Department of Global Health, Boston University School of Public Health, Boston, MA, USA

11 ³ Department of Kinesiology and Community Health, College of Applied Health Sciences, University of
12 Illinois Urbana-Champaign, IL, USA

13 ⁴Institute for Genomic Biology, University of Illinois Urbana-Champaign, IL, USA

14 ⁵ Centro de Investigação em Saúde de Manhiça (CISM), Maputo CP1929,

15 ⁶ Mozambique Instituto Nacional de Saúde, Maputo, Mozambique

16 ⁷School of Medicine, Yale University

17 ⁸Centre for Mathematical Modelling of Infectious Diseases, London School of Hygiene and Tropical
18 Medicine

19

20 Main text word count: 4,937 (Allowed: 5000)

21 **Abstract** (Word count: 199)

22 Seroprevalence provides an estimate of the population-level susceptibility to infection. In this
23 study, we used a transmission model to examine the potential of using serological surveillance
24 to inform the timing of COVID-19 boosters in Mozambique. We simulated using population-level
25 seroprevalence thresholds as an estimate of the risk of outbreaks to trigger the timing of re-
26 vaccination campaigns among older adults. We compare this approach to a strategy of re-
27 vaccination at fixed time intervals. Vaccinating older adults each time the seroprevalence
28 among older adults falls below 50% and 80% resulted in medians of 20% and 71% reduction in
29 deaths, respectively, and number-needed-to-vaccinate to avert one death (NNT) of 1,499 (2.5th-
30 97.5th centile:1,252-1,905) and 3,151 (2,943-3,429), respectively. In comparison, biennial and
31 annual re-vaccination of older adults resulted in medians of 35% and 52% deaths averted,
32 respectively, and NNTs of 1,443 (1,223-1,733) and 1,941 (1,805-2,112), respectively. We
33 conducted sensitivity analysis over a range of antibody waning rates and epidemic scenarios
34 and found that re-vaccination trigger thresholds of 50-60% seroprevalence are most likely to be
35 efficient compared to fixed-time strategies. However, given marginal gains in efficiency even in
36 the best-case scenarios, our results favor the use of simpler fixed-time strategies for long-term
37 control of SARS-CoV-2.

38

39 **Background**

40 Vaccines are a pivotal tool for SARS-CoV-2 control, eliciting strong protection against severe
41 disease and death for vaccinated individuals¹⁻³. Since the beginning of global vaccine rollout in
42 December 2020, COVID-19 vaccines averted an estimated 19.8 million deaths in 185 countries
43 and territories⁴. Vaccination programs enabled safer relaxation of non-pharmaceutical
44 interventions (e.g., social distancing), which facilitated a transition away from the most severe
45 phase of the pandemic^{5,6}.

46 Despite early successes of SARS-CoV-2 vaccines, evidence of waning immunity and the
47 emergence of novel immune-escaping variants raised concern over the longevity of vaccine-
48 induced protection. Since the rise of the highly infectious Omicron variant, effectiveness of the
49 primary series of mRNA vaccines against hospitalizations reduced by almost half compared to
50 protection estimated from the first clinical trials⁷. Booster doses partially restored short-term
51 protection, prompting their strong recommendation for those most at risk of developing severe
52 outcomes^{8,9}. Repeated booster campaigns aimed at restoring protection against severe
53 disease among high risk groups remains an important tool in the medium- to long-term^{10,11}.

54 Effective deployment of vaccines maximizes their public health impact. While population
55 immunity against SARS-CoV-2 was still low, targeted vaccine prioritization rapidly increased
56 protection for vulnerable portions of the population, beginning with those at the highest risk for
57 severe outcomes and deaths. Long-term control of COVID-19 requires the consideration of
58 refined and information-driven strategies that optimizes vaccine efficiency, ideally preventing the
59 greatest number of severe health outcomes with the fewest resources. Identifying critical time
60 periods and targeting population groups most susceptible to impending waves can minimize
61 resource needs while maximizing public health impact.

62 Serology, a marker for prior exposure determined by the presence of antibodies against SARS-
63 CoV-2 in blood serum, also provides information on the degree of susceptibility to infection or
64 disease in individuals. Seroprevalence of randomly sampled individuals provides an estimation
65 of population-level susceptibility, and has previously influenced vaccination strategy. When
66 serological studies from England^{12,13} identified waning SARS-CoV-2 seroprevalence among the
67 oldest age groups, an additional booster targeting this group was recommended.

68 Seroprevalence estimates are further leveraged to guide vaccination strategies for endemic
69 infections. In the case of measles, a fully-immunizing infection with a high reproduction number,
70 seroprevalence is used to identify locations and age groups with inadequate immunity for
71 targeted vaccination campaigns. By providing snapshots of the landscape of population-level

72 immunity before surges in hospitalizations and deaths, seroprevalence estimates enabled
73 preemptive vaccination of the most susceptible population groups¹⁴.

74 The use of serological surveillance, specifically measuring seroprevalence, to monitor changing
75 immunity for SARS-CoV-2 at the population level and to trigger vaccination campaigns emerged
76 as a potential long-term strategy for COVID-19 control^{15,16}. However, the utility of a long-term
77 serology-guided vaccination strategy for a pathogen with an imperfect correlate of protection is
78 unknown and will likely depend on unpredictable long-term dynamics of SARS-CoV-2 driven by
79 waning immunity and new variant emergence^{17,18}. Targeted vaccination strategies hold potential
80 in resource limited settings where vaccine provision is constrained^{19,20}; however, there are few
81 mathematical models tailored to localized and distinct epidemic patterns in low income countries
82 despite their utility for optimizing vaccine strategies.

83 Our study uses a mathematical model of SARS-CoV-2 to determine the utility of incorporating
84 seroprevalence to trigger future COVID-19 re-vaccination efforts. We developed our model to
85 represent Mozambique, a resource-limited setting. Mozambique is notable for its early efforts in
86 measuring countrywide SARS-CoV-2 seroprevalence²¹ and for studying seroprevalence in
87 children before commencing a resource-intensive campaign to vaccinate children²². We assess
88 the efficiency of a serology-guided re-vaccination strategy for COVID-19 in Mozambique under
89 uncertain epidemic dynamics over a 10-year time horizon.

90 **Results**

91 We modeled transmission dynamics and re-vaccination scenarios using a deterministic,
92 compartmental SEIR-like model^{23,24} over a ten-year period starting in September 2022. The
93 model was stratified by age group (≤ 18 years, 19-49 and ≥ 50 years), urban/rural and 12
94 immunological tiers: combinations of four levels of vaccination status (unvaccinated to three
95 doses) and three levels of SARS-CoV-2 exposure status (unexposed to two prior exposures)
96 with lower susceptibility for increased exposure. For long-term SARS-CoV-2 dynamics, we
97 incorporated seasonality^{25,26} assuming annual increases in transmission in the cool, dry season
98 (April to July) and uncertainty in transmission intensity (annual R_t). We assessed a strategy of
99 repeat boosting for older adults (≥ 50 years), likely the most cost-effective²⁷⁻³⁰, and compared
100 the impact of timing additional boosters guided by population-level seroprevalence estimates to
101 the impact of vaccinating at fixed time intervals. We integrated empirical data from Mozambique

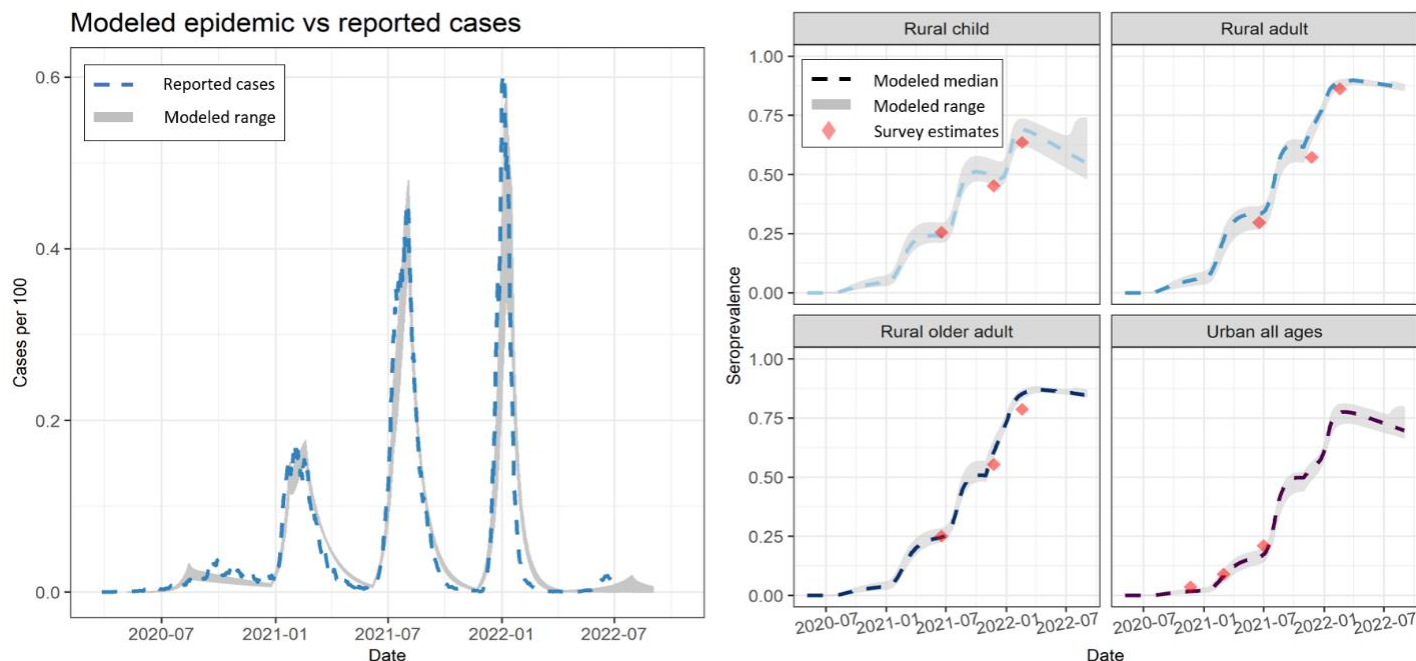
102 on vaccine coverage, human contact patterns collected during the pandemic and survey-derived
103 seroprevalence.

104 *Model calibration*

105 Our historical model projection matched the COVID-19 epidemic waves observed in
106 Mozambique between 2020 and August 2022 (Fig 1) and our modeled seroprevalence closely
107 reflected historical estimates sampled at various times points in Mozambique across three age
108 groups in both urban and rural settings (Fig 1 & SI.7).

109 At the start of model projections (September 2022), the median seroprevalence was 56.5%,
110 86.0% and 84.3% for children, adults, older adults, respectively, based on model calibration. At
111 this time, the estimated distribution of individuals who were fully susceptible (no exposure
112 through infection or vaccination), partially susceptible and fully immune was 16.6%, 67.0%,
113 16.4% for children, 0.6%, 67.9%, 31.5% for adults and 1.3%, 68.3%, 30.6% for older adults.
114 Calibrated primary series vaccine coverage among adults and older adults was 93% and 96%,
115 respectively, comparable to the data. For children who were ineligible for vaccination, immunity
116 was acquired from natural infection alone.

117



118 *Figure 1. (Left) Modeled historical epidemic of cases per 100 persons using the top performing*
119 *calibrated parameters (shaded grey=range of modeled cases per 100, dotted blue=reported*
120 *cases per 100 accounting for 1/90 underreporting for the first two waves, 1/100 underreporting*
121 *for the third wave, 1/120 underreporting for the fourth wave). Ranges reflect choice of calibration*

122 *rather than uncertainty (Right) Modeled seroprevalence compared to seroprevalence estimated*
123 *from serological studies during various periods of the pandemic in Mozambique.*

124

125 *Description of simulated epidemic and changing immunity*

126 Long-term COVID-19 epidemic patterns will likely be driven by immune waning and immune
127 escape^{17,31}. We focused on modelling long-term dynamics driven by the former, assuming that a
128 re-vaccination strategy triggered by seroprevalence is more likely to be beneficial under an
129 epidemic driven by waning immunity. Under this assumption, the ten-year projection with no re-
130 vaccination results in multiple peaks that are on average most intense in the second year and
131 diminish over time due to an increase in population-level immunity (Fig 2). The median
132 cumulative number of deaths across sampled R_t (mean = 5.5, SD = 0.2) over 10 years is 8605
133 (2.5th-97.5th percentile: 8026-9218) for all ages, 100 (93-108) for children, 2224 (2066-2387)
134 for adults and 6281 (5860-6722) for older adults (SI.5.1). Seroprevalence declines over time
135 and increases modestly following surges in cases.

136

137 We further observed from our model that 31% of older adults were fully immune before the start
138 of the forward simulation, of which 58% had protection from vaccination alone with no prior
139 infection. The proportion immune reduces over the next year as individuals lose their full
140 protection and become increasingly susceptible to infection. This immunity gap drives a large
141 wave in 2025 which infects 30% of the population, resulting in a shift in susceptibility whereby
142 individuals transition from vaccine-only protection to hybrid protection from both vaccination and
143 infection (Fig 2). The shift leads to smaller subsequent waves, in line with evidence of increased
144 protection from hybrid immunity³²⁻³⁵.

145 *Descriptive results from re-vaccination strategies*

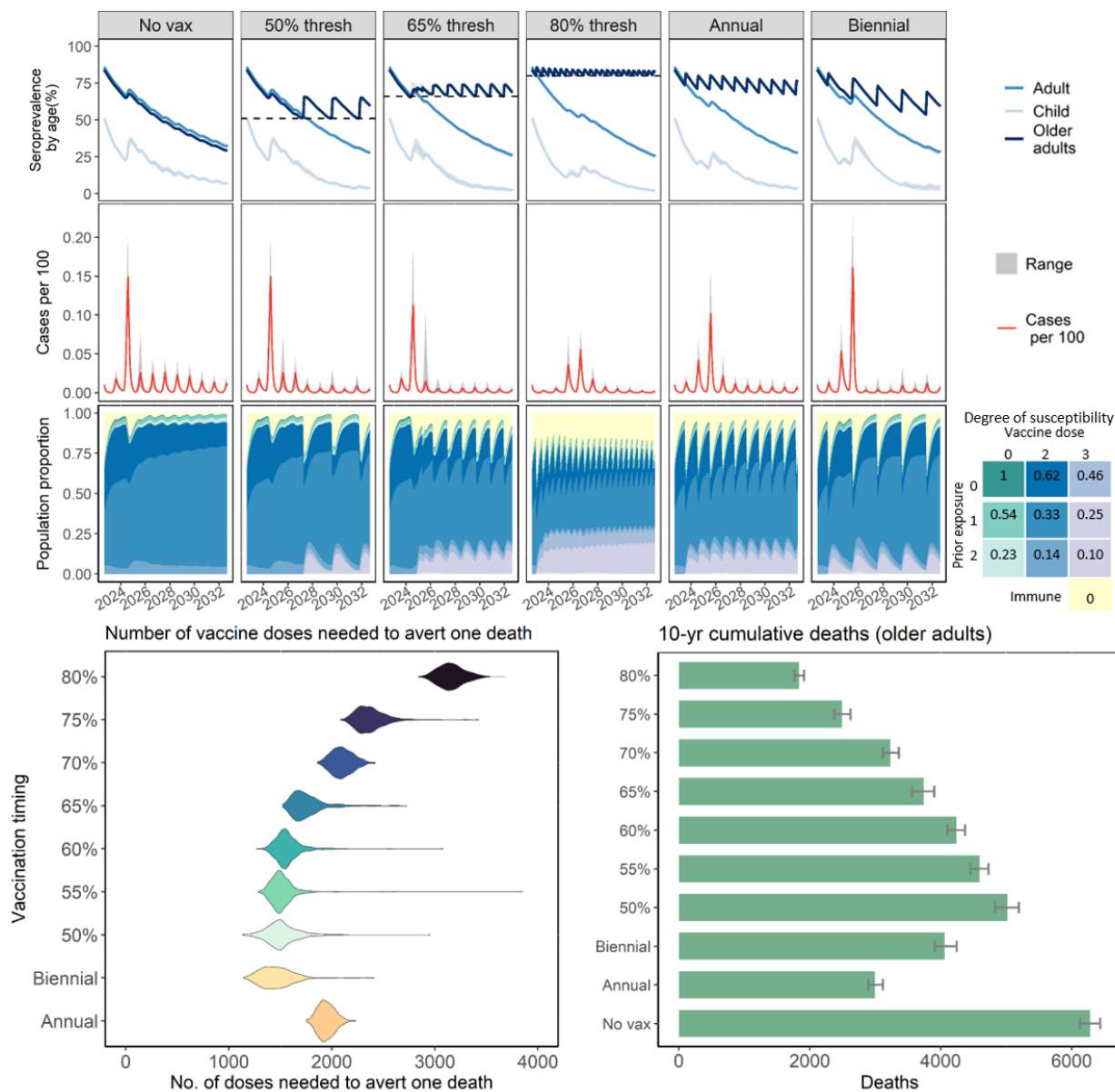
146 For all re-vaccination scenarios, we trigger a vaccination campaign where 50% of the older adult
147 population is vaccinated over a 30-day period. A strategy in which re-vaccination is triggered at
148 a higher seroprevalence threshold (ex. 80%) increases the number of vaccination campaigns
149 and cumulative vaccine doses needed. While only three campaigns (or 1.9 million doses) are
150 needed to maintain a seroprevalence of at least 50% among older adults, 22 campaigns (or
151 13.9 million doses) would be needed to maintain a seroprevalence of at least 80% (SI.5.1).
152 Using a 50% seroprevalence threshold, re-vaccination is first triggered after 4.5 years. Given
153 the higher intensity of earlier epidemic waves, the late re-vaccination trigger has little impact on
154 the epidemic trajectory and total disease burden. In comparison, using a 65% and 80%

155 seroprevalence threshold triggers the first re-vaccinations after 2.3 years and 109 days,
156 respectively. Using either of these thresholds to trigger re-vaccination reduces the size of early
157 waves compared to the 50% threshold, but is at the expense of more frequent vaccination
158 campaigns. In the fixed annual and biennial re-vaccination strategies implemented without
159 regard to seroprevalence, we simulated the first re-vaccinations at 300 days for a total of 10 and
160 5 campaigns over ten years, respectively, early enough to reduce the size of larger projected
161 epidemic waves in 2025.

162 *Impact of different re-vaccination strategy on vaccine efficiency*

163 Compared to a median of 6,281 total simulated deaths among older adults with no additional
164 vaccinations over ten years, vaccinating older adults each time the seroprevalence among older
165 adults falls below 50% and 80% results in a median of 5,017 (2.5th-97.5th percentile: 4,504-
166 5,507) and 1,835 (1,602-2,042) deaths, respectively (Fig.2 and SI.5.1), a reduction of 20
167 and 71%. The number needed to vaccinate to avert one death (NNT) reaches a minimum at a
168 50% threshold where 3 campaigns result in a median of 1,699 (1,445-1,875) fewer deaths and a
169 median NNT of 1,499 (1,252-1,905). The NNT increases with increasing seroprevalence
170 threshold with a median NNT of 3,151 (2,943-3,429) for an 80% threshold. In comparison,
171 annual and biennial re-vaccination of older adults results in a median of 2,999 (2,703-3,315) and
172 4,059 (3,646-4,579) deaths respectively and median NNTs of 1,941 (1,805-2,112) and 1,443
173 (1,223-1,733), respectively (Fig.2 and SI.5.1). In summary, vaccinating at seroprevalence
174 thresholds of 50% - 65% is more efficient than an annual strategy but less efficient than a
175 biennial strategy.

176



177

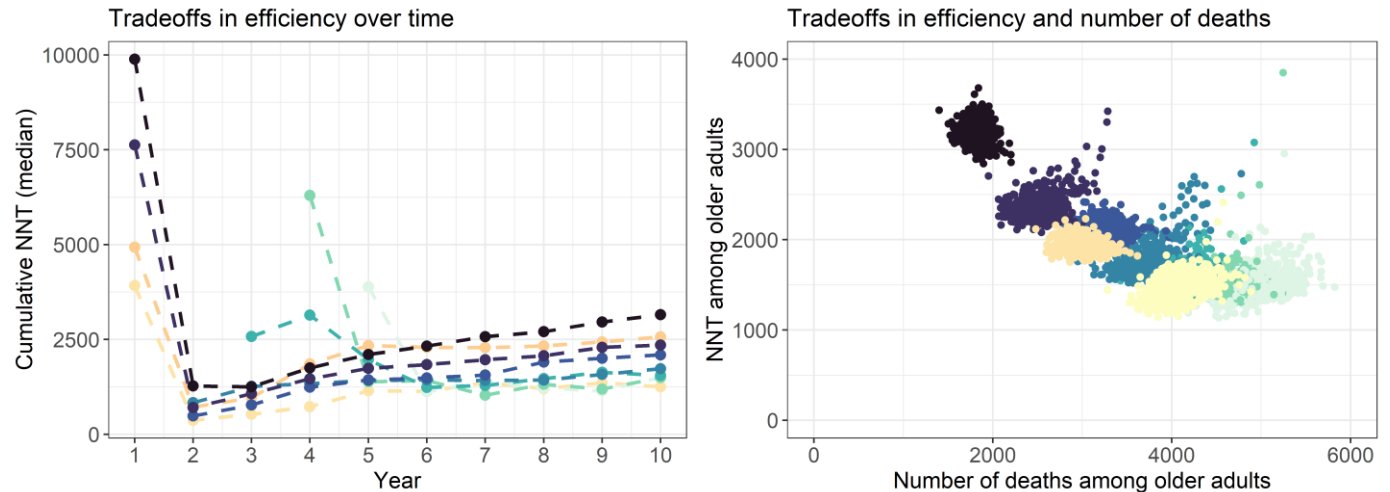
178 *Figure 2. (Top row) Modeled 10-year seroprevalence (gray = 2.5th-97.5th percentile) over time*
 179 *for children (lightest blue), adults (medium blue) and older adults >50 years (darkest blue) under*
 180 *1) no additional vaccinations; 2) re-vaccinations timed by seroprevalence trigger thresholds of*
 181 *50%, 65% and 80% and 3) re-vaccinations timed annually and biennially. (Middle row) Modeled*
 182 *10-year cases per 100 individuals over re-vaccination scenarios (gray shading=ranges from*
 183 *random R_t sampling, red= median); (Bottom row) Susceptibility among older adults. Colored*
 184 *density represents population proportion within susceptible or immune tiers over time, ranging*
 185 *from fully immune (yellow) to up to 2 prior infections and 3 vaccination doses. The blue and*
 186 *purple densities indicate proportion of individuals in the 2- and 3- vaccine dose susceptibility*
 187 *tiers, respectively. The darkest shades within each color have no prior infection and are the*
 188 *most susceptible, with lighter shades indicating more exposure and decreased susceptibility.*
 189 *Individuals can wane from the 3-dose susceptibility tier to the 2-dose tier and from the 3-prior*
 190 *infection tier to the 2-prior infections at a rate of 1/365 days. The degree of susceptibility is*
 191 *indicated in the grid legend and is relative to totally susceptible, with 1 indicating fully*

192 *susceptible and 0 fully immune. In scenarios with re-vaccination, campaigns generate spikes in*
193 *the proportion of individuals fully immune (yellow). More frequent vaccination campaigns result*
194 *in higher proportion immune (yellow) and longer period in the compartment with highest*
195 *protection (purple). (Bottom left) Distribution of the number of vaccine doses needed to avert*
196 *one death (NNT) by re-vaccination timing strategy (biennial, annual, triggered based on*
197 *seroprevalence thresholds of between 50%-80%); (Bottom right) Cumulative deaths over ten*
198 *years among older adults. Error bar represents 2.5th-97.5th percentile of cumulative deaths for*
199 *older adults.*

200 *Tradeoffs in number-needed-to-treat*

201 We explore two tradeoffs in the NNT of different re-vaccination strategies: tradeoffs in 1) NNT
202 over time; 2) NNT and the number of deaths. The cumulative NNT is calculated by dividing the
203 cumulative number of vaccine doses by the cumulative number of deaths averted by the end of
204 year. (Fig 3). The cumulative NNT is sensitive to the timing of the first vaccination, but
205 converges in later years. For example, using the 50% serological threshold delays vaccination
206 until year 4 resulting in a high NNT in year 4 compared to fixed-time strategies. However,
207 despite an early disadvantage in efficiency due to delayed vaccination, the 50% threshold
208 achieves parity with fixed-time strategies which first vaccinate in the year 1 for maximum impact.
209 Across all re-vaccination strategies, the NNT rises over time suggesting that re-vaccination
210 strategies become less efficient as epidemic waves reduce.

211 We further observe a pattern of tradeoff where no single re-vaccination strategy can minimize
212 both NNT and the cumulative deaths. Vaccinating at 80% seroprevalence minimizes the number
213 of deaths but has a higher NNT compared to vaccinating at 50% seroprevalence and thus less
214 efficient. Biennial re-vaccinations and re-vaccinating at 50% and 55% seroprevalence minimizes
215 the NNT. Across these three strategies, the biennial strategy produces the lowest number of
216 deaths compared to the two serology-triggered strategies, largely owing to an earlier timing of
217 first vaccination campaign (Fig 3).



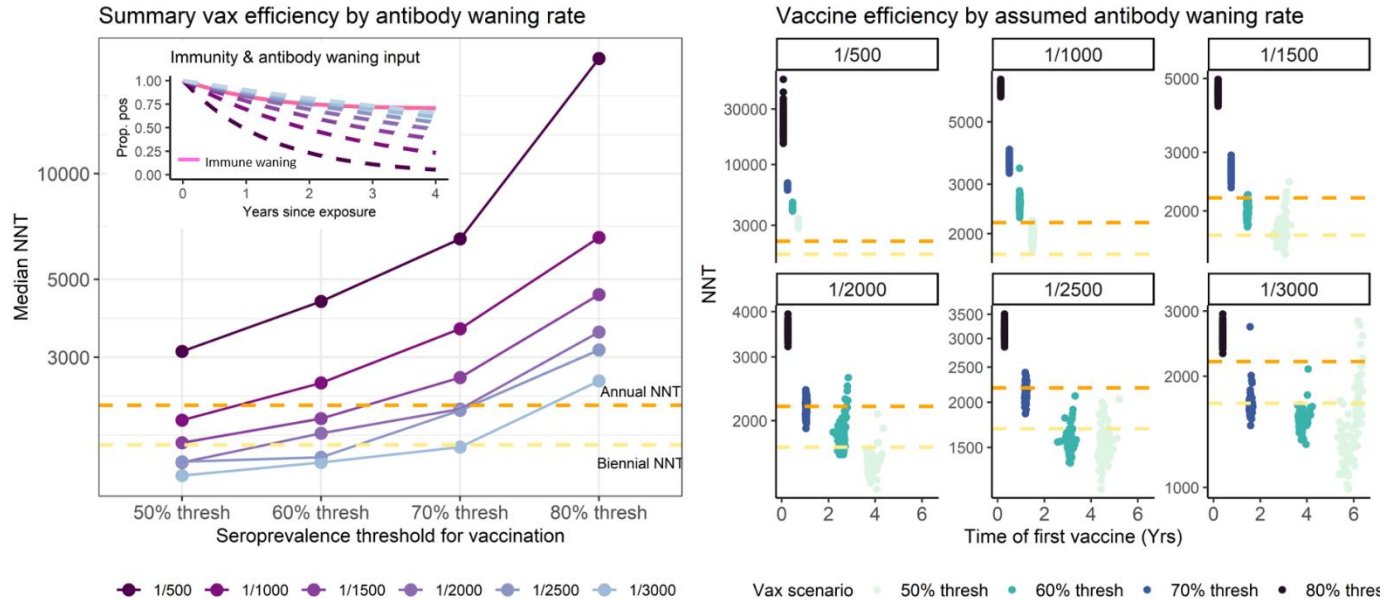
218

219 *Figure 3. (Left) Tradeoffs over time in efficiency estimated by the cumulative number of vaccine*
220 *doses needed to avert one death (NNT) for the high waning immunity epidemic scenario.*
221 *Cumulative NNT is calculated by summing the number of vaccine doses provide by the end of*
222 *each simulation year and dividing by the cumulative number of deaths averted by the end of*
223 *each year. (Right) Scatterplot of tradeoffs in efficiency (NNT) and number of deaths for the high*
224 *waning immunity epidemic scenario.*

225

226 *Sensitivity analysis of waning antibody rates*

227 The time-to-seroreversion of serological markers can vary by target and the choice of titer
228 thresholds used to determine seropositivity³⁶. For example, estimates of time-to-seroreversion
229 after one infection exposure range from 250 days to 730 days for anti-N IgG and 255 days to
230 1500 days for anti-S IgG^{36–38}, with evidence suggesting more durable antibodies after repeated
231 exposures^{13,39,40}. We vary the modeled rate of antibody waning to explore outcomes across a
232 range of antibody targets and seroprevalence trigger thresholds that could be used as part of a
233 surveillance program, assuming multiple exposures, from fastest (time to seroreversion of 500
234 days) to slowest (time to seroreversion of 3000 days). Under assumptions of relatively durable
235 hybrid immunity after multiple exposures, we find that choosing a serological marker with rapid
236 time-to-seroreversion relative to waning immunity results in early first vaccination and frequent
237 subsequent re-vaccination, a highly inefficient strategy. A marker with slower waning and higher
238 correlation with waning immunity is more likely to be efficient compared to annual and biennial
239 re-vaccination strategies.



240

241 *Figure 4. (Left) Median NNT by seroprevalence threshold for re-vaccination over various rates*
 242 *of time-to-seroreversion (lightest purple = slowest time-to-seroreversion, darkest purple =*
 243 *fastest time-to-seroreversion), with annual (orange) and biennial (yellow) NNTs for reference.*
 244 *Inset shows the modeled rates of different antibody waning compared to waning immunity*
 245 *(pink). (Right) Scatter plot of vaccine efficiency (NNT) and time of first vaccination over random*
 246 *Rt simulation runs under different rates of time-to-seroreversion.*

247 *Sensitivity analysis on epidemic assumptions*

248

249 While the expectation is that, SARS-CoV-2 will begin to display regular, seasonal epidemic
 250 patterns, so far, SARS-CoV-2 waves have occurred at irregular times throughout the year⁴¹,
 251 which may continue into the near future. We conducted sensitivity analysis to explore the
 252 relative vaccine efficiency of serologically-triggered versus fixed-time re-vaccination strategies
 253 under randomly-timed epidemics by randomizing the timing of annual increases in transmission
 254 each year. We find that triggering re-vaccination at the 50% seroprevalence threshold is more
 255 efficient than both annual and biennial re-vaccinations. Compared to seasonal epidemic
 256 patterns, under randomly-timed epidemics lower trigger thresholds for serologically-guided
 257 scenarios displayed wide variations in efficiency and deaths averted. In some simulation runs,
 258 serologically-triggered strategies can be highly efficient while in others, sustained transmission
 259 over several years delayed the timing of first vaccination leading to almost no deaths averted
 260 (SI.6).

261 In a separate sensitivity analysis, we simulate future waves driven by increasingly transmissible
 262 immune escape variants. We find a higher number of deaths, fewer deaths averted by re-
 263 vaccination and lower efficiency but similar patterns in efficiency across re-vaccination timing

264 strategies whereby serologically-triggered strategies are not substantially more efficient than
265 either annual or biennial strategies (SI.7).

266 **Discussion**

267 We use a transmission model to examine the potential for serological surveillance to guide the
268 timing of future rounds of COVID-19 re-vaccination in Mozambique, a resource-limited setting.
269 The effectiveness of timing vaccination campaigns guided by population-level prevalence
270 thresholds of a serological marker will depend on future SARS-CoV-2 epidemic patterns and the
271 degree to which the serological marker indicates population-level immune status. Across
272 scenarios of waning rates of serological marker and epidemic patterns we explored, only a
273 lower seroprevalence threshold for triggering re-vaccination (50-60%) is likely to outperform a
274 fixed-time re-vaccination strategy with respect to efficiency. However, routine population-based
275 sampling that can yield accurate and timely seroprevalence estimates will be costly. Given
276 minimal gains in efficiency even in the best-case scenarios, we conclude that there is unlikely to
277 be a cost-effective way to monitor population-level protection and reactively vaccinate the most
278 vulnerable population groups before observing increases in clinical cases and hospitalizations.
279 Further, when weighing tradeoffs between efficiency and deaths, we find that the biennial
280 strategy is most likely to maximize efficiency while minimizing deaths. Taken together, the
281 results from our modeling work favor the use of simpler fixed-time re-vaccination interval
282 strategies over serological-triggered re-vaccination strategies.

283
284 Our results contradicted our belief that using serology-triggered re-vaccination strategies to
285 target time periods of greater susceptibility would substantially outperform fixed-time re-
286 vaccination strategies. In our exploration of reasons for similar efficiencies between the two
287 strategies, we found that modeled seroprevalence did not necessarily predict deaths. We
288 expected a negative correlation between seroprevalence and deaths where higher
289 seroprevalence leads to lower deaths. While this correlation was observed within each year, we
290 found an overall positive correlation over the 10-year period (SI.5.4). Large, early epidemic
291 waves that resulted in more deaths among older and younger populations alike were driven by
292 lower protection among children. These larger early waves occurred despite high
293 seroprevalence among older adults, making it a weaker marker for overall epidemic size.

294

295 Our modeling work provides a framework for explicit considerations necessary for population-
296 level serological surveillance to guide response. The degree of correlation between
297 seroprevalence and immunity is likely to impact its utility. In the case of SARS-CoV-2, studies
298 have explored the level of protection conferred by titers of different serological markers at the
299 individual-level^{42,43}. To formulate a feasible population-based strategy using information on
300 correlates of protection requires its translation into measurable population-level estimates.
301 Selecting an appropriate serological marker and a corresponding titer threshold that can reflect
302 complex population-level susceptibility to future outbreaks and can be monitored through
303 population surveillance will be key. Relatedly, considerations must be given to selecting the
304 most suitable seroprevalence trigger threshold. In the case of measles, where the goal of
305 vaccination is to eliminate infections, the proposed serologically-guided vaccination strategy
306 uses the herd immunity thresholds as the trigger for vaccination campaigns¹⁴. In contrast, the
307 primary objective of SARS-CoV-2 vaccination is to reduce severe outcomes and deaths.
308 Without defined population-level thresholds predictive of severe outcome potential, our
309 modeling tested a range of seroprevalence thresholds as vaccination triggers. Our analysis
310 demonstrated, that in the context of durable hybrid immunity against severe outcomes, using a
311 serological marker with slower waning to trigger re-vaccination is most likely to be efficient
312 against fixed-time strategies. These considerations are further applicable to other infectious
313 diseases that can benefit from leveraging serosurveillance to inform public health
314 interventions^{44,45}

315
316 Our analysis is the first study to assess the efficiency of serological triggers for a long-term
317 SARS-CoV-2 strategy. Our model structure extends previously published models^{26,27} by
318 explicitly representing complex immunity profiles of hybrid immunity. Since the duration and
319 extent of protection conferred by prior exposures depends on whether an individual's particular
320 history includes infection by the virus or one or more vaccine doses³¹, an explicit representation
321 more accurately reflects population-level susceptibility that dynamically changes in response to
322 vaccinations, infections and waning immunity. Unlike other models, we further decouple
323 antibody waning from immunity waning with both processes informed by available data, which
324 more accurately reflects their varying timelines and dynamics. Our NNT values are comparable
325 to two other modelling studies that evaluated the efficiency of booster doses in LMICs where
326 one estimated the NNT to be around 4000 for one booster for all eligible age groups²⁹ and a
327 second estimated the NNT to be 1453 for yearly boosters among those aged 60 years and
328 above³⁰.

329

330 We acknowledge several limitations. There is considerable uncertainty around model
331 parameters, especially for the extent of protection conferred by multiple exposures and duration
332 of antibody waning⁴⁶. Our parameterization reflected the observed protection conferred by prior
333 exposures between March and January 2021, where cross protection against repeat infections
334 was predominantly driven by the wild-type strain and variants up to omicron^{47–49}. Future
335 variants may have greater or less cross protection against future infections than we have
336 modeled here. We assumed a seasonally-forced long-term transmission pattern based on
337 evidence from other respiratory illnesses in Mozambique and from other human
338 coronaviruses^{17,29,50,51}. There remains considerable uncertainty regarding the long-term
339 dynamics of endemic SARS-CoV-2 infection and dynamics proposed by our model served as a
340 base case scenario that allowed for an evaluation of the merits of using a seroprevalence-
341 guided long-term re-vaccination strategy. We tested other epidemic patterns as sensitivity
342 analysis and found comparable results.

343 In conclusion, our study demonstrates that regularly-timed re-vaccinations for older adults,
344 particularly prior to the SARS-CoV-2 season is likely to be more efficient and similarly effective
345 as a serological-triggered re-vaccination strategy. This finding was contrary to our expectation
346 that a serological-triggered strategy could prevent periods of enhanced population risk due to
347 waned protection.

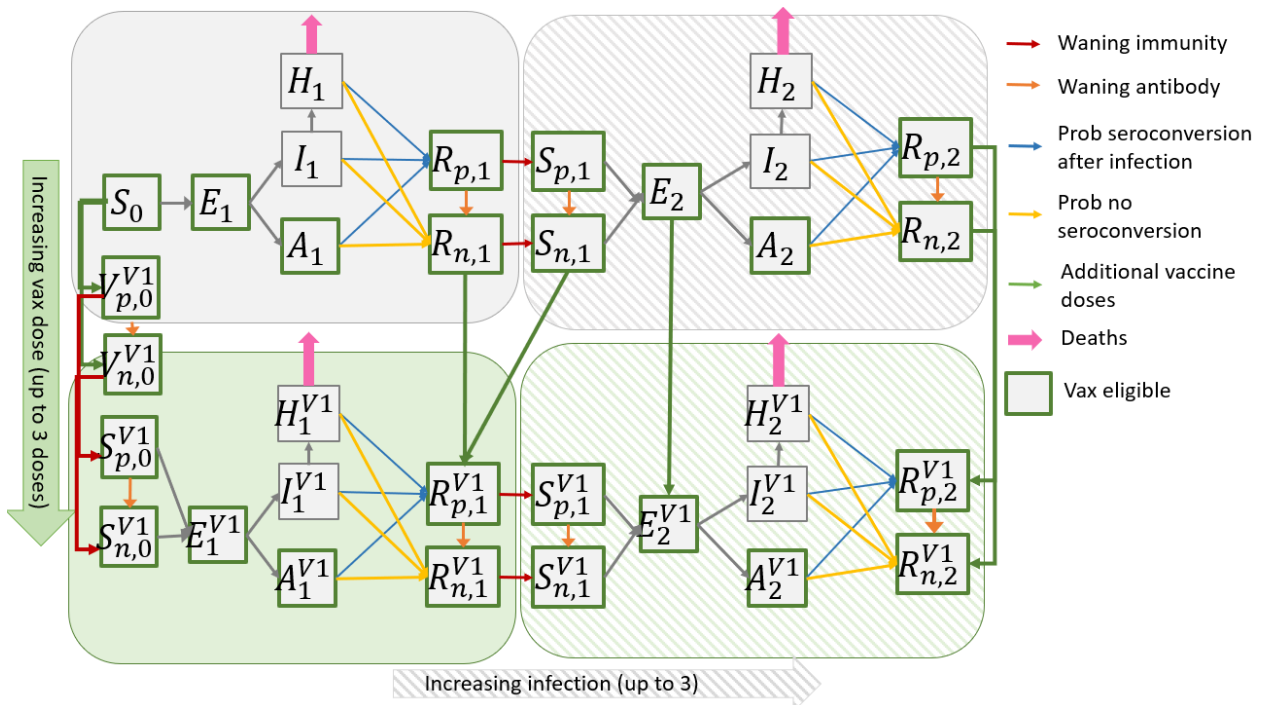
348 **Methods**

349 *Model structure*

350 We extend a deterministic, compartmental SEIR-like model^{23,24} to incorporate demographic
351 strata of age group (≤ 18 years, 19-49 and ≥ 50 years) and urban/rural and twelve tiers of
352 immunity status: combinations of four tiers of vaccine status (unvaccinated, vaccinated with one
353 dose, two doses and three doses) and three tiers of exposure status (unexposed, one prior
354 exposure and two prior exposures) (Fig 5). The multiple tiers of immunity allow differential
355 susceptibility based on prior exposure from either infection or vaccination. To summarize the
356 model design: after exposure, individuals enter a latent, non-infectious period (E), after which
357 they progress to either infectious and asymptomatic (A) or infectious and symptomatic (I). A
358 proportion of symptomatic individuals progress to more severe disease and are hospitalized (H).
359 A subset of those who are hospitalized ultimately die from SARS-CoV-2 (entering the D class).

360 All individuals who are not hospitalized recover (entering the R class) and can either be
 361 seropositive (R_p) or seronegative (R_n). Individuals can also be vaccinated and, if unexposed,
 362 enter the seropositive V_p or seronegative V_n classes immediately post-vaccination, if previously
 363 exposed, enter the seropositive R_p or seronegative R_n classes corresponding to their prior
 364 infection tier. The R and V classes are temporarily immune to infections; however, immunity
 365 wanes over time and individuals return to a partially susceptible class ($S_{p,1}$ for seropositive and
 366 one prior infection and $S_{n,1}$ for seronegative and one prior infection). The force of infection (SI.1.
 367 Eq.1) is modified by probability of infection of exposed age group (β_i), vaccine effectiveness
 368 against infection, differential by 1-3 doses (VEI_v), reduced susceptibility from protection from
 369 prior infection (IP_e), increased variant transmissibility (for Delta and Omicron waves), immune
 370 escape (applied to immunity tiers with prior exposure through either infection or vaccination),
 371 age and rural/urban-specific contact rate ($\chi_{j,i,m,k}$) and infection density within each demographic
 372 strata. Infected individuals who are asymptomatic have reduced transmissibility (α_i). The model
 373 diagram is described in Figure 1, equations can be found in SI.1 and details on model
 374 parameters, values, ranges and sources can be found in SI.2.

375



376

377 *Figure 5. Schematic of an S-E-I-R-like compartment for a single demographic stratum (out of six*
 378 *total: three age groups in each of urban and rural) with four tiers of immunity shown (two tiers of*
 379 *vaccination: unvaccinated and one dose of vaccine, with the superscript V1 the vaccine dose*
 380 *and two tiers of exposure: no prior exposure and one exposure, with the subscript representing*

381 *the number of exposures). Individuals who recover from infection are immune for a period. The*
382 *majority seroconvert after infection (R_p) while others do not (R_n). Immunity for both seropositive*
383 *(R_p) and seronegative (R_n) can wane over time, returning individuals to S_p and S_n , respectively,*
384 *allowing for subsequent infection. Individuals in classes outlined in green are eligible for*
385 *vaccination and move to a higher vaccine tier upon vaccination (not all arrows drawn explicitly in*
386 *the diagram) The majority of individuals seroconvert after vaccination. Vaccinated individuals*
387 *are temporarily immune before their immunity wanes. Individuals in vaccinated and previously*
388 *exposed strata have a reduced probability of infection and disease.*

389 *Seroconversion and seroreversion*

390 Our model distinguishes between antibody positivity and immunity with separate seropositive
391 and seronegative compartments in the S (susceptible), R (recovered) and V (vaccinated)
392 disease states. Presence of neutralizing antibodies following exposure is associated with
393 reduced risk of severe disease^{42,52–55}. Nevertheless, protection against infection also depends
394 on cell-mediated immunity and circulating variants. For example, individuals who lack
395 neutralizing antibodies but have robust cell-mediated immunity can still be protected, while
396 others with antibodies may remain susceptible to new immune-escaping variants^{42,56,57}. Explicit
397 separation of immunity and serological status represents their imperfect correlation.

398 Upon exposure through either infection or vaccination, individuals can seroconvert and become
399 seropositive. We assumed that 90%^{52,53} of infected individuals seroconvert after recovering and
400 85%¹³ of vaccinated individuals seroconvert upon moving to the vaccinated class following first
401 dose. Further, we assume 70% of seronegative individuals who receive an additional vaccine
402 dose will seroconvert⁵⁸.

403 Over time, antibodies can wane with seropositive individuals seroreverting to seronegative. Fully
404 immune and seropositive individuals (R_p) will serorevert to fully immune and seronegative (R_n)
405 while partially susceptible and seropositive individuals (S_p) will serorevert to partially susceptible
406 and seronegative (S_n). Waning rates differ by number of exposures, regardless of whether the
407 exposure was from vaccination or infection (e.g. antibody waning among those infected once
408 and vaccinated once is the same as waning among those vaccinated twice). Seroreversion is
409 fastest following the first exposure (1/500 days)^{59–62} and declines after multiple exposures
410 (range of 1/2500 days after second exposure), in line with recent evidence that antibody titers
411 are higher and more persistent after multiple exposures^{63,64}. To more appropriately represent
412 the dynamics of waning antibodies in the real world, the rate of seroreversion is modeled as a
413 gamma distribution with four sequential compartments for the tiers with the fastest waning
414 rates⁶⁵ (SI.1 for details).

415 *Tiered susceptibility*

416 Following infection or vaccination, we assume that individuals are fully immune for an average
417 of 150 days before moving to a partially susceptible class. Among unvaccinated individuals, one
418 and two prior infections will confer 65%³² and 75% protection against infection (IP_e),
419 respectively.

420 Vaccinated individuals move to a higher vaccination class ($V1 \rightarrow V2 \rightarrow V3$) with reduced rates
421 of infection and probability of hospitalization if infected. We parameterize vaccine effectiveness
422 based on performance of Astra Zeneca, the main vaccine used in Mozambique (and many
423 LMICs) and assume that one dose of vaccine reduces rate of infection (VEI_v) by 50%, two
424 doses by 60% and three doses by 70%. Further, one, two, three doses of vaccine reduces the
425 probability of progression to severe disease (VEP_v) by 40%, 67% and 70% respectively. Overall
426 vaccine effectiveness against hospitalization is 70%, 87% and 91%⁶⁶ for one, two, three doses
427 of vaccine, respectively. For individuals with hybrid immunity, protection from infection is
428 determined by $1-(1-IP_e)*(1-VEI_v)$. SI.13 and SI.14 summarizes key evidence on infection and
429 vaccination effectiveness against susceptibility and severe disease stratified by variants used to
430 inform our immunity parameters.

431 *Data sources and calibration*

432 Model calibration provided an estimation of the population distribution across compartments and
433 the seroprevalence at the start of the simulation (Sept 1, 2022), nine months after the last
434 sampled seroprevalence in Mozambique. We incorporated data on social contact sampled in an
435 urban and a rural area in Mozambique during the COVID-19 pandemic between March 2021-
436 March 2022; multiple cross-sectional seroprevalence data available at several time points from
437 an urban and a rural area (SI.3.3) in Mozambique; vaccination data and time-series of reported
438 cases⁶⁷ adjusted for an underreporting factor to calibrate the model.

439 The following parameters were calibrated using an approximate Bayesian approach: $\beta_c, \beta_a, \beta_e$,
440 (probability of infection upon contact among children, adults and older adults), increased
441 transmissibility and immune escape for Delta and Omicron variants and waning rate of
442 antibodies (SI.2). We defined a range of plausible priors for each parameter informed by
443 literature review and prior experience calibrating a comparable model. The initial ranges for
444 calibration can be found in SI.7. We used Latin hypercube sampling⁶⁸ to randomly sample from
445 the pre-defined parameter space for each run. R_0 from the sampled β s was calculated by
446 identifying the dominant eigenvalue of the next generation matrix that incorporates both age-

447 specific mixing patterns and the age-specific probabilities of transmission ($\beta_c, \beta_a, \beta_e$)⁶⁹. We
448 further constrained β s to sampled trios that met the pre-specified R_0 . We compared the modeled
449 age-specific seroprevalence estimates after each wave to available seroprevalence information
450 as the primary target statistic (17 unique estimates). We conducted the calibration iteratively.
451 Initially, 5000 iterations were sampled from the initial range of parameter spaces. We then
452 identified parameter draws that performed in the top 10% based on the sum of square errors
453 across all seroprevalence estimates and where each modeled data point was within 5
454 percentage points of estimates measured from field studies. We then restricted the ranges for
455 each parameter and conducted another round of LHS sampling based on the new, restricted
456 ranges. This process was repeated 4 times until, iteratively narrowing the calibration range each
457 time. We then ranked each set of parameters by the sum of square errors for seroprevalence
458 estimates and conducted forward simulation using the top 10% ($n=500$). We then chose the set
459 of parameters that produced the median cases and epidemic trajectory over the 10-years
460 simulation period as the primary parameter values for the forward simulations. Sensitivity
461 analysis for the range of acceptable calibrated parameters (top 10%) to assess the degree to
462 which uncertainty in the calibrated values would affect our forward simulation results. Our
463 calibrated values for transmissibility of the delta and omicron variants are in line with the
464 published literature^{70,71}. Ranges from calibration reflect choice in calibration rather than
465 uncertainty.

466 *Forward simulation epidemiological scenarios*

467 We simulated the epidemic forward for ten years from September 1, 2022. Dynamics of long-
468 term immunity were simulated by allowing waning from the highest vaccination and infection tier
469 in addition to the modeled waning described earlier. This included: 1) waning immunity for
470 individuals who recovered after their third infection ($R_{p,3}, R_{n,3}$) to the two-infection susceptible
471 tier ($S_{p,2}, S_{n,2}$) after a period of immunity and 2) waning immunity for individuals from the three-
472 vaccine-dose susceptibility tier (S_p^{V3}, S_n^{V3}) to the two-vaccine-dose susceptibility tier ($S_p^{V2},$
473 S_n^{V2}) after a period of full immunity. We assumed annual waves driven by increases in
474 transmission in the cool, dry season (April-July in Mozambique), informed by observational
475 studies of early SARS-CoV-2 dynamics that cooler and dryer weather were moderately
476 associated with increased SARS-CoV-2 transmissibility^{25,72,73}. The relationship between $R_0(t)$
477 and the specific humidity $q(t)$ is determined by a prior model²⁵: $R_0(t) = \exp(\alpha * q(t) +$
478 $\log(R_{0max} - R_{0min})) + R_{0min}$.

479 To represent uncertainty in future transmission, we sample R_{0max} for each year from a log
480 normal distribution (mean $R_0 = 5.5$, standard deviation = 0.2). R_{0min} is fixed at 2.05, marginally
481 lower than the transmissibility of the original Wuhan strain. Given unpredictable long-term
482 transmission dynamics, we consider one scenario where future waves are driven by high rates
483 of immune escape and a second scenario where future waves are driven by high rates of
484 waning immunity. In the high immune escape scenario, in addition to sampling R_{0max} from the
485 distribution, we enforce a general trend of yearly increases using the following formula:
486 $R_{0max}^h(yr) = R_{0max}(yr) \times 1.075^{yr}$, where $R_{0max}^h(yr)$ is the yearly R_{0max} for the immune escape
487 scenario, $R_{0max}(yr)$ is the randomly sampled R_0 and yr is years since start of simulation. In the
488 waning immunity scenario, we allow for additional waning immunity from the highest three-
489 exposure tier to the two-exposure tier (90% protection to 75% protection in the three-vaccine
490 dose tier and 86% protection to 67% protection in the two-vaccine dose tier). For each scenario,
491 we conducted 500 different runs, each with 10 randomly sampled R_0 for each year.

492 *Vaccination triggers and analytical outputs*

493 Based on literature suggesting increased impact and cost-effectiveness of routine vaccination
494 for older adults compared to routine vaccination of other age groups, we focus on a strategy of
495 booster vaccination for older adults and compare the impact of timing additional doses guided
496 by population-level seroprevalence estimates or based on fixed intervals. When triggered in the
497 model, additional vaccination was provided to the older adult population at 2% (or ~28,000
498 doses) of the older adult population per day over a 30-day campaign period for 50% coverage
499 per campaign, with the same vaccination rate applied to seropositive and seronegative
500 subgroups. A 30-day campaign was deemed feasible and vaccinating ~28,000 deemed
501 achievable compared to the 100,000 doses provided per day during peak campaign periods for
502 the primary COVID-19 series in Mozambique⁷⁴. Specifically, the timing of vaccination was
503 guided by: 1) seroprevalence thresholds among older adults ranging from 50-80% where
504 vaccination will be triggered when the seroprevalence falls below the threshold; 2) fixed time
505 intervals where vaccination will be triggered annually or biennially, with the first vaccine
506 campaign triggered a year after the start of simulation.

507 Our primary outcome is the number of vaccinations provided to older adults needed to avert one
508 death in the population (or number-needed-to-treat, NNT), using the number of deaths when no
509 additional vaccinations are provided as the base case. The NNT allows more equitable
510 comparison between scenarios where vaccination is constantly triggered versus scenarios
511 where vaccination is rarely triggered, shedding insight on the efficiency and potential cost-

512 effectiveness of different vaccination timing strategies. We further present the number of deaths
513 and the number of deaths averted compared to a no vaccination scenario and the number and
514 timing of additional vaccination campaigns.

515

516 References

- 517 1. Thompson MG, Burgess JL, Naleway AL, et al. Interim Estimates of Vaccine Effectiveness of
518 BNT162b2 and mRNA-1273 COVID-19 Vaccines in Preventing SARS-CoV-2 Infection Among Health
519 Care Personnel, First Responders, and Other Essential and Frontline Workers — Eight U.S. Locations,
520 December 2020–March 2021. *MMWR Morb Mortal Wkly Rep.* 2021;70(13):495-500.
521 doi:10.15585/mmwr.mm7013e3
- 522 2. Thompson MG, Stenehjem E, Grannis S, et al. Effectiveness of Covid-19 Vaccines in Ambulatory and
523 Inpatient Care Settings. *N Engl J Med.* Published online September 8, 2021.
524 doi:10.1056/NEJMoa2110362
- 525 3. Liu Q, Qin C, Liu M, Liu J. Effectiveness and safety of SARS-CoV-2 vaccine in real-world studies: a
526 systematic review and meta-analysis. *Infect Dis Poverty.* 2021;10(1):132. doi:10.1186/s40249-021-
527 00915-3
- 528 4. Watson OJ, Barnsley G, Toor J, Hogan AB, Winskill P, Ghani AC. Global impact of the first year of
529 COVID-19 vaccination: a mathematical modelling study. *The Lancet Infectious Diseases.*
530 2022;22(9):1293-1302. doi:10.1016/S1473-3099(22)00320-6
- 531 5. Telenti A, Arvin A, Corey L, et al. After the pandemic: perspectives on the future trajectory of COVID-
532 19. *Nature.* 2021;596(7873):495-504. doi:10.1038/s41586-021-03792-w
- 533 6. Koelle K, Martin MA, Antia R, Lopman B, Dean NE. The changing epidemiology of SARS-CoV-2.
534 Published online 2022:7.
- 535 7. Surie D, Bonnell L, Adams K, et al. Effectiveness of Monovalent mRNA Vaccines Against COVID-19–
536 Associated Hospitalization Among Immunocompetent Adults During BA.1/BA.2 and BA.4/BA.5
537 Predominant Periods of SARS-CoV-2 Omicron Variant in the United States — IVY Network, 18 States,
538 December 26, 2021–August 31, 2022. *MMWR Morb Mortal Wkly Rep.* 2022;71(42):1327-1334.
539 doi:10.15585/mmwr.mm7142a3
- 540 8. CDC Statement on ACIP Booster Recommendations | CDC Online Newsroom | CDC. Published
541 September 2021. Accessed June 22, 2023. [https://www.cdc.gov/media/releases/2021/p0924-
542 booster-recommendations-.html](https://www.cdc.gov/media/releases/2021/p0924-booster-recommendations-.html)
- 543 9. World Health Organization. Interim statement on booster doses for COVID-19 vaccination.
544 Published October 2021. Accessed October 3, 2022. [https://www.who.int/news/item/04-10-2021-
545 interim-statement-on-booster-doses-for-covid-19-vaccination](https://www.who.int/news/item/04-10-2021-interim-statement-on-booster-doses-for-covid-19-vaccination)
- 546 10. SAGE updates COVID-19 vaccination guidance. Accessed April 4, 2023.
547 <https://www.who.int/news/item/28-03-2023-sage-updates-covid-19-vaccination-guidance>
- 548 11. Stoddard M, Yuan L, Sarkar S, et al. *The Impact of Vaccination Frequency on COVID-19 Public Health*
549 *Outcomes: A Model-Based Analysis.* Infectious Diseases (except HIV/AIDS); 2023.
550 doi:10.1101/2023.01.26.23285076
- 551 12. Shrotri M, Navaratnam AMD, Nguyen V, et al. Spike-antibody waning after second dose of
552 BNT162b2 or ChAdOx1. *The Lancet.* 2021;398(10298):385-387. doi:10.1016/S0140-6736(21)01642-1

- 553 13. Ward H, Whitaker M, Flower B, et al. Population antibody responses following COVID-19 vaccination
554 in 212,102 individuals. *Nat Commun.* 2022;13(1):907. doi:10.1038/s41467-022-28527-x
- 555 14. Lessler J, Metcalf CJE, Cutts FT, Grenfell BT. Impact on Epidemic Measles of Vaccination Campaigns
556 Triggered by Disease Outbreaks or Serosurveys: A Modeling Study. von Seidlein L, ed. *PLoS Med.*
557 2016;13(10):e1002144. doi:10.1371/journal.pmed.1002144
- 558 15. Bryant JE, Azman AS, Ferrari MJ, et al. Serology for SARS-CoV-2: Apprehensions, opportunities, and
559 the path forward. *Sci Immunol.* 2020;5(47):eabc6347. doi:10.1126/sciimmunol.abc6347
- 560 16. dos Santos Ferreira CE, Gómez-Dantés H, Junqueira Bellei NC, et al. The Role of Serology Testing in
561 the Context of Immunization Policies for COVID-19 in Latin American Countries. *Viruses.*
562 2021;13(12):2391. doi:10.3390/v13122391
- 563 17. Antia R, Halloran ME. Transition to endemicity: Understanding COVID-19. *Immunity.*
564 2021;54(10):2172-2176. doi:10.1016/j.immuni.2021.09.019
- 565 18. Lavine JS, Bjornstad ON, Antia R. Immunological characteristics govern the transition of COVID-19 to
566 endemicity. *Science.* 2021;371(6530):741-745. doi:10.1126/science.abe6522
- 567 19. Massinga Loembé M, Nkengasong JN. COVID-19 vaccine access in Africa: Global distribution, vaccine
568 platforms, and challenges ahead. *Immunity.* 2021;54(7):1353-1362.
569 doi:10.1016/j.immuni.2021.06.017
- 570 20. Ayenigbara IO, Adegboro JS, Ayenigbara GO, Rowland O, Olofintuyi OO. The challenges to a
571 successful COVID-19 vaccination programme in Africa. *Germs.* Published online 2021:14.
- 572 21. Ministério da Saúde - Moçambique. COVID-19: Inquérito Sero-epidemiológico de SARS-CoV-2.
573 Published 2021. Accessed May 4, 2023. [https://www.misau.gov.mz/index.php/covid-19-inquerito-](https://www.misau.gov.mz/index.php/covid-19-inquerito-sero-epidemiologicos)
574 [sero-epidemiologicos](https://www.misau.gov.mz/index.php/covid-19-inquerito-sero-epidemiologicos)
- 575 22. Arnaldo P, Mabunda N, Young PW, et al. Prevalence of SARS-CoV-2 antibodies in the Mozambican
576 population: a cross-sectional Serologic study in three cities, July-August 2020. *Clinical Infectious*
577 *Diseases.* Published online June 24, 2022:ciac516. doi:10.1093/cid/ciac516
- 578 23. Gallagher ME, Sieben AJ, Nelson KN, et al. Indirect benefits are a crucial consideration when
579 evaluating SARS-CoV-2 vaccine candidates. *Nat Med.* 2021;27(1):4-5. doi:10.1038/s41591-020-
580 01172-x
- 581 24. Kraay ANM, Gallagher ME, Ge Y, et al. *Modeling the Use of SARS-CoV-2 Vaccination to Safely Relax*
582 *Non-Pharmaceutical Interventions.* *Epidemiology;* 2021. doi:10.1101/2021.03.12.21253481
- 583 25. Baker RE, Yang W, Vecchi GA, Metcalf CJE, Grenfell BT. Susceptible supply limits the role of climate
584 in the early SARS-CoV-2 pandemic. *Science.* 2020;369(6501):315-319. doi:10.1126/science.abc2535
- 585 26. Saad-Roy CM, Morris SE, Metcalf CJE, et al. Epidemiological and evolutionary considerations of
586 SARS-CoV-2 vaccine dosing regimes. *Science.* 2021;372(6540):363-370.
587 doi:10.1126/science.abg8663

- 588 27. Barnard RC, Davies NG, Centre for Mathematical Modelling of Infectious Diseases COVID-19 working
589 group, et al. Modelling the medium-term dynamics of SARS-CoV-2 transmission in England in the
590 Omicron era. *Nat Commun*. 2022;13(1):4879. doi:10.1038/s41467-022-32404-y
- 591 28. Li R, Liu H, Fairley CK, et al. Cost-effectiveness analysis of BNT162b2 COVID-19 booster vaccination
592 in the United States. *International Journal of Infectious Diseases*. 2022;119:87-94.
593 doi:10.1016/j.ijid.2022.03.029
- 594 29. Cohen LE, Spiro DJ, Viboud C. Projecting the SARS-CoV-2 transition from pandemicity to endemicity:
595 Epidemiological and immunological considerations. Lakdawala S, ed. *PLoS Pathog*.
596 2022;18(6):e1010591. doi:10.1371/journal.ppat.1010591
- 597 30. Hogan AB, Wu SL, Toor J, et al. *Long Term Vaccination Strategies to Mitigate the Impact of SARS-*
598 *CoV-2 Transmission: A Modelling Study*. *Epidemiology*; 2023. doi:10.1101/2023.02.09.23285743
- 599 31. Wagner CE, Saad-Roy CM, Grenfell BT. Modelling vaccination strategies for COVID-19. *Nat Rev*
600 *Immunol*. 2022;22(3):139-141. doi:10.1038/s41577-022-00687-3
- 601 32. Hall V, Foulkes S, Insalata F, et al. Protection against SARS-CoV-2 after Covid-19 Vaccination and
602 Previous Infection. *N Engl J Med*. 2022;386(13):1207-1220. doi:10.1056/NEJMoa2118691
- 603 33. Tan ST, Park HJ, Rodríguez-Barraquer I, et al. COVID-19 Vaccination and Estimated Public Health
604 Impact in California. *JAMA Netw Open*. 2022;5(4):e228526.
605 doi:10.1001/jamanetworkopen.2022.8526
- 606 34. Bobrovitz N, Ware H, Ma X, et al. Protective effectiveness of previous SARS-CoV-2 infection and
607 hybrid immunity against the omicron variant and severe disease: a systematic review and meta-
608 regression. *The Lancet Infectious Diseases*. Published online January 2023:S1473309922008015.
609 doi:10.1016/S1473-3099(22)00801-5
- 610 35. Altarawneh HN, Chemaitelly H, Ayoub HH, et al. Effects of Previous Infection and Vaccination on
611 Symptomatic Omicron Infections. *N Engl J Med*. 2022;387(1):21-34. doi:10.1056/NEJMoa2203965
- 612 36. Peluso M, Takahashi S, Hakim J, et al. SARS-CoV-2 antibody magnitude and detectability are driven
613 by disease severity, timing, and assay. *SCIENCE ADVANCES*. Published online 2021:13.
- 614 37. Wei J, Matthews PC, Stoesser N, et al. Anti-spike antibody response to natural SARS-CoV-2 infection
615 in the general population. *Nat Commun*. 2021;12(1):6250. doi:10.1038/s41467-021-26479-2
- 616 38. Loesche M, Karlson EW, Talabi O, et al. Longitudinal SARS-CoV-2 Nucleocapsid Antibody Kinetics,
617 Seroreversion, and Implications for Seroepidemiologic Studies. *Emerg Infect Dis*. 2022;28(9):1859-
618 1862. doi:10.3201/eid2809.220729
- 619 39. Wei J, Matthews PC, Stoesser N, et al. SARS-CoV-2 antibody trajectories after a single COVID-19
620 vaccination with and without prior infection. *Nat Commun*. 2022;13(1):3748. doi:10.1038/s41467-
621 022-31495-x

- 622 40. Berry AA, Tjaden AH, Renteria J, et al. Persistence of antibody responses to COVID-19 vaccines
623 among participants in the COVID-19 Community Research Partnership. *Vaccine: X*. 2023;15:100371.
624 doi:10.1016/j.jvacx.2023.100371
- 625 41. Branswell H. Covid-19 hasn't fallen into a seasonal pattern — yet. *STAT News*. Published August 23,
626 2023. Accessed August 29, 2023. [https://www.statnews.com/2023/08/23/covid-19-has-not-yet-](https://www.statnews.com/2023/08/23/covid-19-has-not-yet-fallen-into-a-seasonal-pattern/)
627 [fallen-into-a-seasonal-pattern/](https://www.statnews.com/2023/08/23/covid-19-has-not-yet-fallen-into-a-seasonal-pattern/)
- 628 42. Khoury DS, Cromer D, Reynaldi A, et al. Neutralizing antibody levels are highly predictive of immune
629 protection from symptomatic SARS-CoV-2 infection. *Nat Med*. 2021;27(7):1205-1211.
630 doi:10.1038/s41591-021-01377-8
- 631 43. Zar HJ, MacGinty R, Workman L, et al. Natural and hybrid immunity following four COVID-19 waves:
632 A prospective cohort study of mothers in South Africa. *eClinicalMedicine*. 2022;53:101655.
633 doi:10.1016/j.eclinm.2022.101655
- 634 44. Wiens KE, Jauregui B, Arnold BF, et al. Building an integrated serosurveillance platform to inform
635 public health interventions: Insights from an experts' meeting on serum biomarkers. Kamel MG, ed.
636 *PLoS Negl Trop Dis*. 2022;16(10):e0010657. doi:10.1371/journal.pntd.0010657
- 637 45. Dean NE, Howard DH, Lopman BA. Serological Studies and the Value of Information. *Am J Public*
638 *Health*. Published online March 9, 2023:e1-e3. doi:10.2105/AJPH.2023.307245
- 639 46. Post N, Eddy D, Huntley C, et al. Antibody response to SARS-CoV-2 infection in humans: A systematic
640 review. Mantis NJ, ed. *PLoS ONE*. 2020;15(12):e0244126. doi:10.1371/journal.pone.0244126
- 641 47. Lacy J, Mensah A, Simmons R, et al. Protective effect of a first SARS-CoV-2 infection from
642 reinfection: a matched retrospective cohort study using PCR testing data in England. *Epidemiol*
643 *Infect*. 2022;150:e109. doi:10.1017/S0950268822000966
- 644 48. Carazo S, Skowronski DM, Brisson M, et al. Protection against omicron (B.1.1.529) BA.2 reinfection
645 conferred by primary omicron BA.1 or pre-omicron SARS-CoV-2 infection among health-care
646 workers with and without mRNA vaccination: a test-negative case-control study. *The Lancet*
647 *Infectious Diseases*. 2023;23(1):45-55. doi:10.1016/S1473-3099(22)00578-3
- 648 49. Tan CY, Chiew CJ, Pang D, et al. Vaccine effectiveness against Delta, Omicron BA.1, and BA.2 in a
649 highly vaccinated Asian setting: a test-negative design study. *Clinical Microbiology and Infection*.
650 Published online August 2022:S1198743X22004189. doi:10.1016/j.cmi.2022.08.002
- 651 50. Kissler SM, Tedijanto C, Goldstein E, Grad YH, Lipsitch M. Projecting the transmission dynamics of
652 SARS-CoV-2 through the postpandemic period. Published online 2020:10.
- 653 51. Veldhoen M, Simas JP. Endemic SARS-CoV-2 will maintain post-pandemic immunity. *Nat Rev*
654 *Immunol*. 2021;21(3):131-132. doi:10.1038/s41577-020-00493-9
- 655 52. Lou B, Li TD, Zheng SF, et al. Serology characteristics of SARS-CoV-2 infection after exposure and
656 post-symptom onset. *Eur Respir J*. 2020;56(2):2000763. doi:10.1183/13993003.00763-2020

- 657 53. Oved K. Multi-center nationwide comparison of seven serology assays reveals a SARS-CoV-2 non-
658 responding seronegative subpopulation. Published online 2020:10.
- 659 54. Van Elslande J, Oyaert M, Ailliet S, et al. Longitudinal follow-up of IgG anti-nucleocapsid antibodies
660 in SARS-CoV-2 infected patients up to eight months after infection. *Journal of Clinical Virology*.
661 2021;136:104765. doi:10.1016/j.jcv.2021.104765
- 662 55. Earle KA, Ambrosino DM, Fiore-Gartland A, et al. Evidence for antibody as a protective correlate for
663 COVID-19 vaccines. *Vaccine*. 2021;39(32):4423-4428. doi:10.1016/j.vaccine.2021.05.063
- 664 56. Lumley SF, O'Donnell D, Stoesser NE, et al. Antibody Status and Incidence of SARS-CoV-2 Infection in
665 Health Care Workers. *N Engl J Med*. 2021;384(6):533-540. doi:10.1056/NEJMoa2034545
- 666 57. Turner JS, Kim W, Kalaidina E, et al. SARS-CoV-2 infection induces long-lived bone marrow plasma
667 cells in humans. *Nature*. 2021;595(7867):421-425. doi:10.1038/s41586-021-03647-4
- 668 58. Plumb ID, Fette LM, Tjaden AH, et al. Estimated COVID-19 vaccine effectiveness against
669 seroconversion from SARS-CoV-2 Infection, March–October, 2021. *Vaccine*. 2023;41(15):2596-2604.
670 doi:10.1016/j.vaccine.2023.03.006
- 671 59. He Z, Ren L, Yang J, et al. Seroprevalence and humoral immune durability of anti-SARS-CoV-2
672 antibodies in Wuhan, China: a longitudinal, population-level, cross-sectional study. *The Lancet*.
673 2021;397(10279):1075-1084. doi:10.1016/S0140-6736(21)00238-5
- 674 60. Swartz MD, DeSantis SM, Yaseen A, et al. Antibody duration after infection from SARS-CoV-2 in the
675 Texas Coronavirus Antibody Response Survey. *The Journal of Infectious Diseases*. Published online
676 May 6, 2022;jiac167. doi:10.1093/infdis/jiac167
- 677 61. Wei J, Stoesser N, Matthews PC, et al. Antibody responses to SARS-CoV-2 vaccines in 45,965 adults
678 from the general population of the United Kingdom. *Nat Microbiol*. 2021;6(9):1140-1149.
679 doi:10.1038/s41564-021-00947-3
- 680 62. Wang H, Yuan Y, Xiao M, et al. Dynamics of the SARS-CoV-2 antibody response up to 10 months
681 after infection. *Cell Mol Immunol*. 2021;18(7):1832-1834. doi:10.1038/s41423-021-00708-6
- 682 63. Ward H. Population antibody responses following COVID-19 vaccination in 212,102 individuals.
683 *Nature Communications*. 2022;13(907):6.
- 684 64. Ali H, Alahmad B, Al-Shammari AA, et al. Previous COVID-19 Infection and Antibody Levels After
685 Vaccination. *Front Public Health*. 2021;9:778243. doi:10.3389/fpubh.2021.778243
- 686 65. Wearing HJ, Rohani P, Keeling MJ. Appropriate Models for the Management of Infectious Diseases.
687 Ellner SP, ed. *PLoS Med*. 2005;2(7):e174. doi:10.1371/journal.pmed.0020174
- 688 66. Higdon M, Wahl B, Jones C, et al. A systematic review of COVID-19 vaccine efficacy and
689 effectiveness against SARS-CoV-2 infection and disease. *Open Forum Infectious Diseases*.
690 2022;ofac138. doi:https://doi.org/10.1093/ofid/ofac138

- 691 67. Ritchie H, Mathieu E, Rodés-Guirao L, et al. Coronavirus Pandemic (COVID-19). *Our World in Data*.
692 Published online 2020. <https://ourworldindata.org/coronavirus>
- 693 68. Stein M. Large Sample Properties of Simulations Using Latin Hypercube Sampling. *Technometrics*.
694 1987;29(2):143-151. doi:10.2307/1269769
- 695 69. Diekmann O, Heesterbeek JAP, Roberts MG. The construction of next-generation matrices for
696 compartmental epidemic models. *J R Soc Interface*. 2010;7(47):873-885. doi:10.1098/rsif.2009.0386
- 697 70. Liu Y, Gayle AA, Wilder-Smith A, Rocklöv J. The reproductive number of COVID-19 is higher
698 compared to SARS coronavirus. *Journal of Travel Medicine*. 2020;27(2):taaa021.
699 doi:10.1093/jtm/taaa021
- 700 71. Campbell F, Archer B, Laurenson-Schafer H, et al. Increased transmissibility and global spread of
701 SARS-CoV-2 variants of concern as at June 2021. *Eurosurveillance*. 2021;26(24). doi:10.2807/1560-
702 7917.ES.2021.26.24.2100509
- 703 72. Ma Y, Pei S, Shaman J, Dubrow R, Chen K. Role of meteorological factors in the transmission of
704 SARS-CoV-2 in the United States. *Nat Commun*. 2021;12(1):3602. doi:10.1038/s41467-021-23866-7
- 705 73. Sajadi MM, Habibzadeh P, Vintzileos A, Shokouhi S, Miralles-Wilhelm F, Amoroso A. Temperature,
706 Humidity, and Latitude Analysis to Estimate Potential Spread and Seasonality of Coronavirus Disease
707 2019 (COVID-19). *JAMA Netw Open*. 2020;3(6):e2011834.
708 doi:10.1001/jamanetworkopen.2020.11834
- 709 74. Total COVID-19 vaccine doses administered per 100 people. Our World in Data. Accessed July 1,
710 2022. <https://ourworldindata.org/grapher/covid-vaccination-doses-per-capita>
- 711