

Appendix

1		
2		
3		
4	Supplementary Methods	2
5	Supplementary Results	3
6	Table S1. Parameters used in assay development software. Parameters used in the development of new	
7	primers and probes using Primer3Plus (https://primer3plus.com/ , accessed 7/16/23).	6
8	Table S2. Primers and probes used in this study for different targets.	7
9	Table S3. Viruses considered in this study and the region of the genome that each virus assay targets.	
10	Viruses used to test specificity are indicated as “non target testing” and viruses used as positive	
11	controls are indicated as “target testing”.	8
12	Table S4. Additional details related to the EMMI guidelines.	9
13	Figure S1. The location of the two sewersheds where samples were collected in this study.	10
14	Figure S2. EMMI15 checklist.	11
15	Figure S3. Multiplex assay performance.	12
16	Figure S4. Distribution of Kd values measured in eight samples of paired liquid and solid samples	
17	from OSP for each viral target considered herein.	13
18	Figure S5. PMMoV-normalized wastewater data and positivity rates.	14
19		

20 Supplementary Methods

21
22 **(RT-)PCR assays.** All primers and probe sequences (including custom and previously published assays, Table S2)
23 were then screened for specificity *in silico* and *in vitro*. Assays were tested *in vitro* for specificity and sensitivity
24 using virus panels (NATrol™ Respiratory Verification Panel NATRVP2.1-BIO, NATrol™ EV Panel
25 NATRVEVP-C, Zeptomatrix, Buffalo, NY), and genomic and synthetic target nucleic acids purchased from
26 American Type Culture Collection (ATCC, Manassas, VA) (Table S3). The respiratory virus panel includes
27 chemically inactivated intact influenza viruses, parainfluenza viruses, adenovirus, rhinovirus A, metapneumovirus,
28 rhinovirus, RSV, several coronaviruses, and SARS-CoV-2; the EV panel includes chemically inactivated intact
29 coxsackieviruses, echovirus, and parechovirus. Nucleic acids were extracted from intact viruses or cells using
30 Chemagic Viral DNA/RNA 300 Kit H96 for Chemagic 360 (PerkinElmer, Waltham, MA).

31
32 Nucleic acids were used undiluted as template in digital droplet (RT-)PCR singleton assays for sensitivity and
33 specificity testing in single wells. The concentration of targets used in the *in vitro* specificity testing was between
34 10^3 and 10^4 copies per well. Negative (RT-)PCR controls were included on each plate.

35
36 **Solids pre-analytical processing.** As mentioned in the main text, these methods have been described in detail
37 previously in published papers^{1,2} and open access protocols^{3,4}. Briefly, a pre-measured mass of dewatered solids was
38 suspended in a buffer at a concentration of 75 mg/ml. The mixture was homogenized and then centrifuged; nucleic-
39 acids were extracted using a commercial kit Chemagic Viral DNA/RNA 300 Kit H96 for Chemagic 360
40 (PerkinElmer, Waltham, MA) and then the nucleic-acids were processed using an inhibitor removal kit (Zymo,
41 Irvine, CA). This protocol has been shown to alleviate potential inhibition while maintaining good assay
42 sensitivity^{2,5}. 300 μ l of the suspension entered into the nucleic-acid extraction process and 50 μ l of nucleic-acids are
43 retrieved after the inhibitor removal kit. An aliquot of the dewater solids was used to determine the dry weight of the
44 solids using oven drying.

45
46 **Influent pre-analytical processing.** For each influent sample, 10 replicate aliquots were processed using an
47 affinity-based capture method with magnetic hydrogel Nanotrap Particles with Enhancement Reagent 1 (Ceres
48 Nanosciences, Manassas, VA) on 10 mL of sample to concentrate viral particles using a KingFisher Flex system
49 following vendor instructions. Nucleic-acids were then extracted from the each concentrated aliquot using the
50 MagMAX Viral/Pathogen Nucleic Acid Isolation Kit (Applied Biosystems, Waltham, MA) on the KingFisher Flex
51 platform to obtain purified nucleic acids which were then process through a Zymo OneStep-96 PCR Inhibitor
52 Removal kit (Zymo Research, Irvine, CA). Each 10 ml sample resulted in 50 μ l total nucleic acid extract.

53
54 **dd(RT-)PCR methods.** The ddRT-PCR methods applied to measure PMMoV in a singleplex reaction are provided
55 in detail elsewhere¹. The human virus assays were run in multiplex using a probe-mixing approach and unique
56 fluorescent molecules (HEX, FAM, Cy5, Cy5.5, ROX, ATTO950) in two sets of reactions. One reaction included
57 primers and probes for rotavirus (fluorescent molecule(s) on probe: FAM), SARS-CoV-2 (FAM/HEX), HuNoV GII
58 (ATTO590), and HAdV (ROX/ATTO590). The second reaction included primers and probes for EV (Cy5.5) and
59 HuNoV GI (ATTO590). Note that the two human virus reactions contained several additional primers and probe sets
60 that yielded results not reported herein. In particular, assays targeting the genomes of West Nile virus, human
61 immunodeficiency virus, hepatitis A virus, *Candida auris*, and enterovirus D68 and several influenza subtype
62 markers⁶ were included. Each reaction was run on its own 96-well plate.

63
64 Each 96-well PCR plate of wastewater samples included PCR positive controls for each target assayed on the plate
65 in 1 well, PCR negative no template controls in two wells, and extraction negative controls (consisting of water and
66 lysis buffer) in two wells. PCR positive controls consisted of viral gRNA or gene blocks (Table S3).

67

68 ddRT-PCR was performed on 20 μ l samples from a 22 μ l reaction volume, prepared using 5.5 μ l template, mixed
69 with 5.5 μ l of One-Step RT-ddPCR Advanced Kit for Probes (Bio-Rad 1863021), 2.2 μ l of 200 U/ μ l Reverse
70 Transcriptase, 1.1 μ l of 300 mM dithiothreitol (DTT) and primers and probes mixtures at a final concentration of
71 900 nM and 250 nM respectively. Primer and probes for assays were purchased from Integrated DNA Technologies
72 (IDT, San Diego, CA) (Table 1). Human virus targets were measured in reactions with undiluted template whereas
73 PMMoV was run on template diluted 1:100 in molecular grade water.

74
75 Droplets were generated using the AutoDG Automated Droplet Generator (Bio-Rad, Hercules, CA). PCR was
76 performed using Mastercycler Pro (Eppendorf, Enfield, CT) with with the following cycling conditions: reverse
77 transcription at 50°C for 60 minutes, enzyme activation at 95°C for 5 minutes, 40 cycles of denaturation at 95°C for
78 30 seconds and annealing and extension at 59°C (for human viruses) or 56°C (for PMMoV) for 30 seconds, enzyme
79 deactivation at 98°C for 10 minutes then an indefinite hold at 4°C. The ramp rate for temperature changes were set
80 to 2°C/second and the final hold at 4°C was performed for a minimum of 30 minutes to allow the droplets to
81 stabilize. Droplets were analyzed using the QX200 or the QX600 Droplet Reader (Bio-Rad). A well had to have
82 over 10,000 droplets for inclusion in the analysis. All liquid transfers were performed using the Agilent Bravo
83 (Agilent Technologies, Santa Clara, CA).

84
85 Thresholding was done using QuantaSoft™ Analysis Pro Software (Bio-Rad, version 1.0.596) and QX Manager
86 Software (Bio-Rad, version 2.0). Replicate wells were merged for analysis of each sample. In order for a sample to
87 be recorded as positive, it had to have at least 3 positive droplets.

88
89 We sought to confirm that the multiplexing up to eight assays did not interfere with target quantification. We tested
90 whether the quantification of a single target in the presence of and absence of similar concentrations of the seven
91 other targets, including those for which results are not reported in this study, was substantially different. To do so,
92 we first quantified three decimal dilutions of a target nucleic acid in the absence of any other targets using the (RT)-
93 PCR chemistry that included primers and probes for all eight targets. Then, we quantified the same decimal dilutions
94 of the single target in the presence of 10-100 copies per reaction of the seven other targets. Each dilution was run in
95 a single well and no template, negative controls were included on each PCR plate. Assays were run and thresholded
96 as described above. Results were expressed as copies per reaction and the standard deviation, as output by the
97 instrument, were included.

98
99 **Comparison of PMMoV and SARS-CoV-2 measurements on stored versus unstored samples.** All the samples
100 used in this study were processed for measurements of SARS-CoV-2 N gene and PMMoV M gene in wastewater
101 solids on unstored samples as a part of a prospective wastewater monitoring program for infectious disease
102 surveillance. The methods for analysis for the N gene through 3/13/23 were identical to those previously described
103 in a Data Descriptor² with the exact same approaches described in this paper except the assay was multiplexed with
104 two other assays using a two color droplet reader (QX200, Bio-rad). Between 3/13/23 and 4/14/23, the N gene was
105 multiplexed with assays for five adjacent single nucleotide polymorphisms (SNPs) in SARS-CoV-2 XBB*,
106 respiratory syncytial virus (RSV), influenza A, influenza B, and HuNoV GII in conjunction with a 6-color droplet
107 reader (QX600, Bio-rad)⁶⁻⁸.

108

109 **Supplementary Results**

110

111 **PMMoV measurements in the samples used for the retrospective analysis.** Since PMMoV RNA is present in
112 high concentrations in the samples naturally, lack of its detection, or abnormally low measurements might indicate
113 gross extraction failures. The median (interquartile range) log₁₀-transformed PMMoV was 9.1 (9.0-9.2) and 8.7 (8.6-

114 8.8) log₁₀ copies/g at SJ and OSP, respectively. The lowest measurements at the two sites were 8.5 (SJ) and 8.1
115 (OSP) log₁₀ copies/g and given these lowest values are within an order of magnitude of the medians, we concluded
116 that there was no gross extraction failure. We opted to not use an exogenous viral control in these experiments, like
117 bovine coronavirus, owing to the complexities associated with interpreting recovery of an exogenous spiked control
118 in environmental samples⁹, and its potential to interfere with other uses of the samples, for example viral
119 metagenomics.

120
121 **Losses attributable to storage and freeze thaw.** We compared measurements of the SARS-CoV-2 N gene and
122 PMMoV M gene made on the samples that were fresh to those used in this study that were stored, and for which the
123 RNA underwent one freeze-thaw. Median (IQR) ratio of PMMoV measurements made in this study to those made
124 using fresh samples was 0.9 (0.6-1.2) at SJ and 1.0 (0.7-1.4) at OSP suggesting limited degradation of the PMMoV
125 target in the stored and freeze-thawed samples. Median ratio of SARS-CoV-2 N gene measurements made in this
126 study to those made using fresh samples was 0.2 (0.1-0.3) at SJ and 0.4 (0.2-0.6) at OSP suggesting storage and
127 freeze thaw may have reduced measurement concentrations, but by less than an order of magnitude.

128
129 **Additional details related to the EMMI guidelines.** Thirty-six samples from the retrospective study were selected
130 at random for this analysis; this represents 8% of the samples processed in the study. As described in the methods
131 section, each sample was run as template in three different PCR reactions; 1 for PMMoV, 1 for rotavirus, SARS-
132 CoV-2, HuNoV GII, and HAdV, and 1 for EV and HuNoV GI. The average (standard deviation) number of
133 partitions (droplets) for each of the three reactions (across the 10 replicates) was 164164 (38851) for the reaction for
134 PMMoV, 174321 (20126) for the reaction for rotavirus, SARS-CoV-2, HuNoV GII, and HAdV, and 185497
135 (24410) for the reaction for EV and HuNoV GI. The volume of the partitions, as reported by the machine vendor is
136 0.00085 μL. The mean and standard deviation of copies per partition for each target is shown in Table S4. Example
137 fluorescent plots from the QX200 (two color reader) can be viewed in Topol et al. on protocols.io¹⁰ and an example
138 fluorescent plot from the QX600 (6 color reader) is included in the Stanford Digital Repository with the deposited
139 data (<https://doi.org/10.25740/hr647tm4528>).

141 References

- 142 (1) Wolfe, M. K.; Topol, A.; Knudson, A.; Simpson, A.; White, B.; Duc, V.; Yu, A.; Li, L.; Balliet, M.; Stoddard,
143 P.; Han, G.; Wigginton, K. R.; Boehm, A. High-Frequency, High-Throughput Quantification of SARS-CoV-2
144 RNA in Wastewater Settled Solids at Eight Publicly Owned Treatment Works in Northern California Shows
145 Strong Association with COVID-19 Incidence. *mSystems* **2021**, *6* (5), e00829-21.
146 <https://doi.org/10.1128/mSystems.00829-21>.
- 147 (2) Boehm, A. B.; Wolfe, M. K.; Wigginton, K. R.; Bidwell, A.; White, B. J.; Hughes, B.; Duong; Chan-Herur,
148 V.; Bischel, H. N.; Naughton, C. C. Human Viral Nucleic Acids Concentrations in Wastewater Solids from
149 Central and Coastal California USA. *Scientific Data* **2023**, *10*, 396.
- 150 (3) Topol, A.; Wolfe, M.; White, B.; Wigginton, K.; Boehm, A. High Throughput Pre-Analytical Processing of
151 Wastewater Settled Solids for SARS-CoV-2 RNA Analyses. *protocols.io* **2021**.
152 <https://doi.org/dx.doi.org/10.17504/protocols.io.btyqnpvw>.
- 153 (4) Topol, A.; Wolfe, M.; Wigginton, K.; White, B.; Boehm, A. High Throughput RNA Extraction and PCR
154 Inhibitor Removal of Settled Solids for Wastewater Surveillance of SARS-CoV-2 RNA. *protocols.io* **2021**.
155 <https://doi.org/dx.doi.org/10.17504/protocols.io.btyrnpv6>.
- 156 (5) Huisman, J. S.; Scire, J.; Caduff, L.; Fernandez-Cassi, X.; Ganesanandamoorthy, P.; Kull, A.; Scheidegger,
157 A.; Stachler, E.; Boehm, A. B.; Hughes, B.; Knudson, A.; Topol, A.; Wigginton, K. R.; Wolfe, M. K.; Kohn,
158 T.; Ort, C.; Stadler, T.; Julian, T. R. Wastewater-Based Estimation of the Effective Reproductive Number of
159 SARS-CoV-2. *Environmental Health Perspectives* **2022**, *130* (5), 057011-1.
- 160 (6) Boehm, A. B.; Wolfe, M. K.; White, B. J.; Hughes, B.; Duong, D.; Bidwell, A. More than a Tripledemic:
161 Influenza A Virus, Respiratory Syncytial Virus, SARS-CoV-2, and Human Metapneumovirus in Wastewater
162 during Winter 2022-2023. *Environ. Sci. Technol. Lett.* **2023**, *10* (8), 622-627.

- 163 <https://doi.org/10.1021/acs.estlett.3c00385>.
- 164 (7) Boehm, A. B.; Wolfe, M. K.; White, B.; Hughes, B.; Duong, D.; Banaei, N.; Bidwell, A. Human Norovirus
165 (HuNoV) GII RNA in Wastewater Solids at 145 United States Wastewater Treatment Plants: Comparison to
166 Positivity Rates of Clinical Specimens and Modeled Estimates of HuNoV GII Shedders. *Journal of Exposure
167 Science & Environmental Epidemiology* **2023**. <https://doi.org/10.1038/s41370-023-00592-4>.
- 168 (8) Hughes, B.; White, B. J.; Wolfe, M. K.; Boehm, A. B. Quantification of Various SARS-CoV-2 Variant
169 Mutations (Characteristic of Alpha, Beta, Gamma, Delta, Omicron and Omicron Sublineages) in Settled
170 Solids Using Digital RT-PCR. *Protocols.io* **2023**. <https://dx.doi.org/10.17504/protocols.io.14egnzzrzg5d/v11>.
- 171 (9) Kantor, R. S.; Nelson, K. L.; Greenwald, H. D.; Kennedy, L. C. Challenges in Measuring the Recovery of
172 SARS-CoV-2 from Wastewater. *Environ. Sci. Technol.* **2021**, *55* (6), 3514–3519.
173 <https://doi.org/10.1021/acs.est.0c08210>.
- 174 (10) Topol, A.; Wolfe, M.; White, B.; Wigginton, K.; Boehm, A. High Throughput SARS-COV-2, PMMOV, and
175 BCoV Quantification in Settled Solids Using Digital RT-PCR. *protocols.io* **2021**.
176 <https://doi.org/dx.doi.org/10.17504/protocols.io.btywnpxe>.
- 177 (11) Loisy, F.; Atmar, R. L.; Guillon, P.; Le Cann, P.; Pommepuy, M.; Le Guyader, F. Real-Time RT-PCR for
178 Norovirus Screening in Shellfish. *Journal of Virological Methods* **2005**, *123* (1), 1–7.
- 179 (12) Jothikumar Narayanan; Lowther James A.; Henshilwood Kathleen; Lees David N.; Hill Vincent R.; Vinjé Jan.
180 Rapid and Sensitive Detection of Noroviruses by Using TaqMan-Based One-Step Reverse Transcription-PCR
181 Assays and Application to Naturally Contaminated Shellfish Samples. *Applied and Environmental
182 Microbiology* **2005**, *71* (4), 1870–1875. <https://doi.org/10.1128/AEM.71.4.1870-1875.2005>.
- 183 (13) Jothikumar, N.; Kang, G.; Hill, V. R. Broadly Reactive TaqMan® Assay for Real-Time RT-PCR Detection of
184 Rotavirus in Clinical and Environmental Samples. *Journal of Virological Methods* **2009**, *155* (2), 126–131.
185 <https://doi.org/10.1016/j.jviromet.2008.09.025>.
- 186 (14) Gregory, J. B.; Litaker, R. W.; Noble, R. T. Rapid One-Step Quantitative Reverse Transcriptase PCR Assay
187 with Competitive Internal Positive Control for Detection of Enteroviruses in Environmental Samples. *Applied
188 and Environmental Microbiology* **2006**, *72* (6), 3960–3967.
- 189 (15) Borchardt, M. A.; Boehm, A. B.; Salit, M.; Spencer, S. K.; Wigginton, K. R.; Noble, R. T. The Environmental
190 Microbiology Minimum Information (EMMI) Guidelines: QPCR and DPCR Quality and Reporting for
191 Environmental Microbiology. *Environ. Sci. Technol.* **2021**, *55* (15), 10210–10223.
192 <https://doi.org/10.1021/acs.est.1c01767>.
- 193

194

195 **Table S1. Parameters used in assay development software. Parameters used in the development of new**
196 **primers and probes using Primer3Plus (<https://primer3plus.com/>, accessed 7/16/23).**

197

198

199

200

201

202

203

204

205

- Product size ranges: 60-275
- Primer size: min 15 bp, opt 20 bp, max 36 bp
- Primer melting temperature: min 50°C, optimal 60°C, max 65°C
- GC% content: min 40%, optimal 50%, high 60%
- concentration of divalent cations = 3.8 mM
- concentration of dNTPs needs to be 0.8 mM
- Internal Oligo: size min 15 bp, optimal 20 bp, max 30 bp
- Internal Oligo: Melting temp min 62°C, optimal 63°C, max 70°C
- Internal Oligo: GC% min 30%, optimal 50%, max 80%

206

Target	Primer/Probe	Sequence
HAdV (183bp)	Forward	CCTCCTGTGTTACGCCAGA
	Reverse	CAGGCTGAAGTASGTATCGG
	Probe	CTCGATGATGCCGCAATGGT
HuNoV GII (88bp)	Forward	ATGTTCAAGRTGGATGAGRTTCTCWGA
	Reverse	TCGACGCCATCTTCATTCACA
	Probe	AGCACGTGGGAGGGCGATCG
HuNoV GI (76bp)	Forward	GCCATGTTCCGITGG ATG
	Reverse	TCCTTAGACGCCATCATCAT
	Probe	TG GGACAGGAGATCGCAATCTC
Rotavirus (113bp)	Forward	CAGTGGTTGATGCTCAAGATGGA
	Reverse	TCATTGTAATCATATTGAATACCCA
	Probe	ACAACTGCAGCTTCAAAGAAGWGT
EV (143bp)	Forward	CCCTGAATGCGGCTAAT
	Reverse	TGTCACCATAAGCAGCCA
	Probe	ACGGACACCCAAAGTAGTCGGTTC
SARS-CoV-2 (143bp)	Forward	CATTACGTTTGGTGGACCCT
	Reverse	CCTTGCCATGTTGAGTGAGA
	Probe	CGCGATCAAAAACAACGTCGG
PMMoV	Forward	GAGTGGTTTGACCTTAACGTTTGA

(68bp)	Reverse	TTGTCGGTTGCAATGCAAGT
	Probe	CCTACCGAAGCAAATG

208

209 **Table S2. Primers and probes used in this study for different targets. The size of the amplicon generated by**
210 **the primers is shown under the target name (units of basepairs, bp). Primers and probes were purchased**
211 **from Integrated DNA Technologies (Coralville, IA, USA). All probes contained fluorescent molecules and**
212 **quenchers (5' HEX, FAM, Cy5, Cy5.5, ROX, and/or ATTO950/ZEN/3' IBFQ); FAM, 6-fluorescein amidite;**
213 **HEX, hexachloro-fluorescein; Cy5, Cyanine-5; Cy5.5, Cyanine5.5; ROX, carboxyrhodamine; ZEN, a**
214 **proprietary internal quencher from Integrated DNA Technologies (Coralville, IA, USA); and IBFQ, Iowa**
215 **Black FQ. HAdV is human adenovirus group F, HuNoV is human norovirus, and EV is enterovirus.**

216

Virus	Genomic target	Non-target testing (negatives)	Target testing (positives)	Reference
Adenovirus F (HAdV)	Hexon gene	NATRV2.1-BIO	ATCC VR-930DQ	Not applicable
Norovirus GII (HuNoV GII)	ORF1-2 junction	NATRV2.1-BIO	ATCC VR-3235SD	Loisy et al. ¹¹
Norovirus GI (HuNoV GI)	ORF1-2 junction	NATRV2.1-BIO NATEVP-C	ATCC VR-3234SD	Jothikuman et al. ¹²
Rotavirus	Non-structural Region Protein 3 (NSP3)	NATRV2.1-BIO NATEVP-C	ATCC VR-2018DQ	Jothikumar et al. ¹³
Enterovirus (EV)	5' UTR	NATRV2.1-BIO	NATEVP-C	Gregory et al. ¹⁴

218 **Table S3. Viruses considered in this study and the region of the genome that each virus assay targets. Viruses**
219 **used to test specificity are indicated as “non target testing” and viruses used as positive controls are indicated**
220 **as “target testing”. The reference for each assay is provided aside from HAdV for which an assay was**
221 **developed herein. All non-target controls are panels sold by Zeptomatrix (panels begin with NAT prefix,**
222 **“Zepto”, Buffalo, NY). ATCC is American Type Culture Collection. The NATRV2.1-BIO panel includes**
223 **chemically inactivated intact influenza viruses, parainfluenza viruses, adenovirus, rhinovirus,**
224 **metapneumovirus, and coronaviruses. The NATEVP-C panel includes chemically inactivated intact**
225 **coxsackieviruses, echovirus, and parechovirus. The full list of species in the panels is available from the**
226 **vendor.**

227

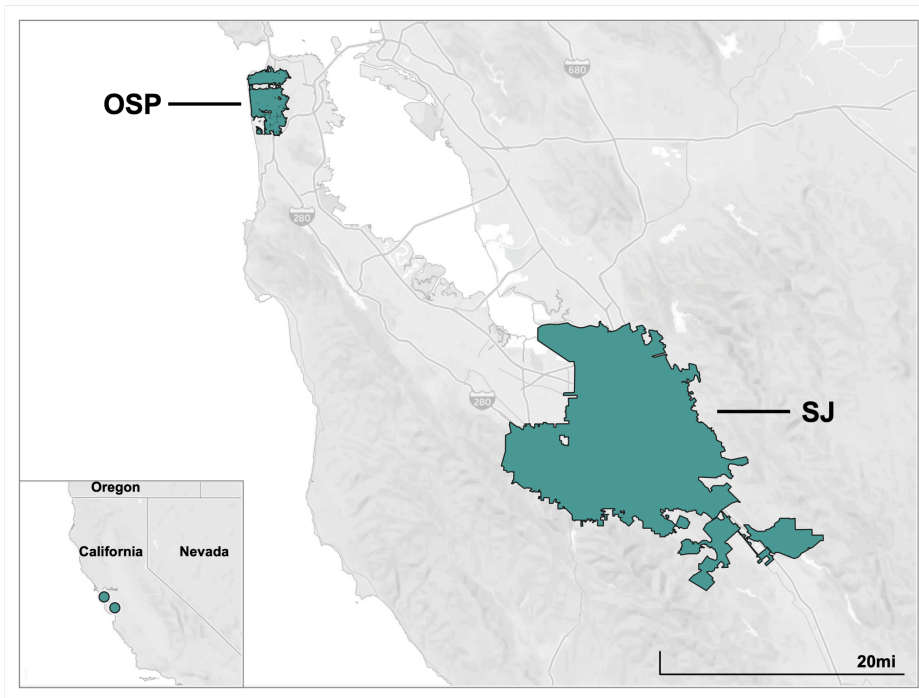
228

229 **Table S4. Additional details related to the EMMI guidelines. For each target measured in this study, the**
230 **mean and standard deviation (sd) of the total number of copies of target per partition. Num is the number of**
231 **samples out of a random 36 included in this analysis that had detectable target in them and thus contributed**
232 **to the calculated mean and standard deviation. A value of 0 indicates that of the random 36 samples selected,**
233 **none of them had the target present in them. Abbreviations for the targets are provided in the main text**
234 **except “Rota” is rotavirus and SC2 is the N gene of SARS-CoV-2.**

Target	EV	HuNoV GI	Rota	SC2	HuNoV GII	HAdV	PMMoV
mean	1.02x10 ⁻³	8.93x10 ⁻⁴	1.20x10 ⁻⁴	1.37x10 ⁻³	1.12x10 ⁻²	5.03x10 ⁻²	0.15
sd	3.65x10 ⁻⁴	7.94x10 ⁻⁴	1.14x10 ⁻⁴	1.22x10 ⁻³	8.57x10 ⁻³	3.58x10 ⁻²	0.069
num	36	36	23	36	36	36	36

235

236



237

238 **Figure S1. The location of the two sewer sheds where samples were collected in this study.**

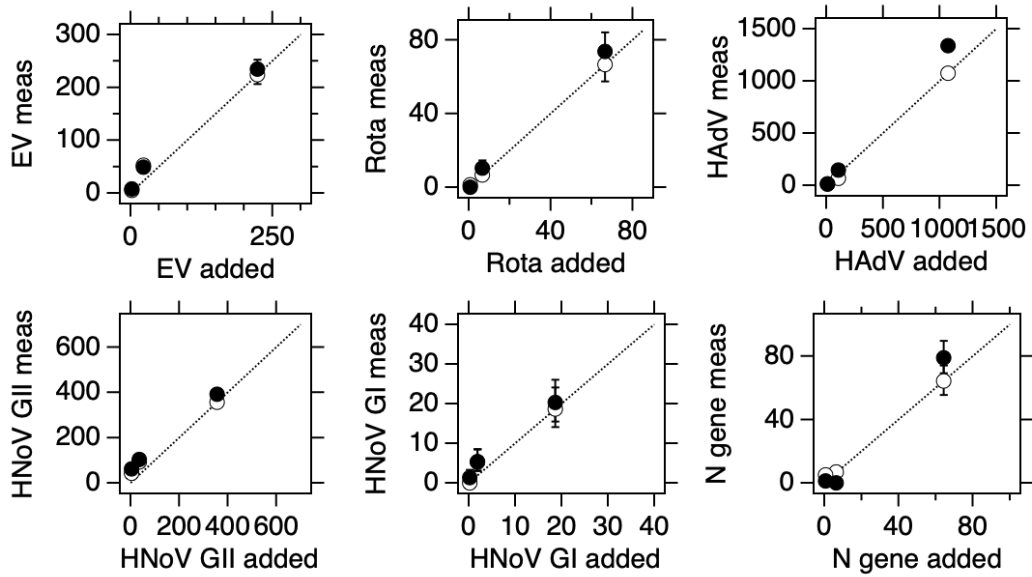
239

240

241 Figure S2. EMMI¹⁵ checklist. The checklist is also available at the Stanford Digital Repository with the
 242 deposited data (<https://doi.org/10.25740/hr647tm4528>).

Study Description	Environmental Sampling	Sample Treatment	Sample Reduction	Nucleic-acid Extraction	Reverse Transcription	PCR Amplification	Analysis
Study name: enteric virus Date: 8/17/23 Completed by: Boehm	Notes: Described in detail in the methods section	Notes: No sample treatment done	Notes: Described in detail in the methods section	Notes: Described in detail in the methods section	Notes: Described in detail in the methods section	Notes: Described in detail in the methods section	Notes: Described in detail in the methods section
Control Checklist							
Step performed	<input checked="" type="checkbox"/>	<input type="checkbox"/>	<input checked="" type="checkbox"/>	<input checked="" type="checkbox"/>	<input checked="" type="checkbox"/>	<input checked="" type="checkbox"/>	
Step has control info	<input type="checkbox"/>	<input type="checkbox"/>	<input type="checkbox"/>	<input type="checkbox"/>	<input type="checkbox"/>	<input type="checkbox"/>	Negative controls
# of control replicates	0	na	0	2	2	2	
Control result reported	<input type="checkbox"/>	<input type="checkbox"/>	<input type="checkbox"/>	<input checked="" type="checkbox"/>	<input checked="" type="checkbox"/>	<input checked="" type="checkbox"/>	
Method for handling failed controls described	<input type="checkbox"/>	<input type="checkbox"/>	<input type="checkbox"/>	<input checked="" type="checkbox"/>	<input checked="" type="checkbox"/>	<input checked="" type="checkbox"/>	
Step has control info	<input type="checkbox"/>	<input type="checkbox"/>	<input checked="" type="checkbox"/>	<input checked="" type="checkbox"/>	<input checked="" type="checkbox"/>	<input checked="" type="checkbox"/>	Positive controls
Control identity described	<input type="checkbox"/>	<input type="checkbox"/>	<input checked="" type="checkbox"/>	<input checked="" type="checkbox"/>	<input checked="" type="checkbox"/>	<input checked="" type="checkbox"/>	
Control quantification method described	<input type="checkbox"/>	<input type="checkbox"/>	<input checked="" type="checkbox"/>	<input checked="" type="checkbox"/>	<input checked="" type="checkbox"/>	<input checked="" type="checkbox"/>	
# control replicates	0	na	10	1	1	1	
Control result reported	<input type="checkbox"/>	<input type="checkbox"/>	<input checked="" type="checkbox"/>	<input checked="" type="checkbox"/>	<input checked="" type="checkbox"/>	<input checked="" type="checkbox"/>	
Method for handling failed controls described	<input type="checkbox"/>	<input type="checkbox"/>	<input checked="" type="checkbox"/>	<input checked="" type="checkbox"/>	<input checked="" type="checkbox"/>	<input checked="" type="checkbox"/>	
Process checklist							
Environmental Sampling		Nucleic-acid Extraction		qPCR or dPCR		Analysis- dPCR	
Sample procedure	<input checked="" type="checkbox"/>	Extraction procedure	<input checked="" type="checkbox"/>	Target gene name, amplicon length	<input checked="" type="checkbox"/>	Threshold settings	<input checked="" type="checkbox"/>
Number of samples	<input checked="" type="checkbox"/>	Volume or mass extracted, volume or mass obtained	<input checked="" type="checkbox"/>	Thermocycling temp and times	<input checked="" type="checkbox"/>	Technical replicates, number, well mapping	<input checked="" type="checkbox"/>
Sample amount, mean, range	<input checked="" type="checkbox"/>	Extract storage conditions	<input checked="" type="checkbox"/>	Master mix composition: vendors, concentrations	<input checked="" type="checkbox"/>	Partitions measured, number, mean, variance	<input checked="" type="checkbox"/>
Sampling locations, dates, times	<input checked="" type="checkbox"/>	Reverse Transcription		Additives: vendors, composition	<input checked="" type="checkbox"/>	Partition volume	<input checked="" type="checkbox"/>
Sample storage conditions	<input checked="" type="checkbox"/>	One- or two-step	<input checked="" type="checkbox"/>	Template amount added, pre-treatment (if any)	<input checked="" type="checkbox"/>	Target copies per partition, mean, variance	<input checked="" type="checkbox"/>
Sample Treatment		cDNA storage conditions (if 2 step)	<input type="checkbox"/>	Primers: sequences, concentrations, vendors, references	<input checked="" type="checkbox"/>	Program used for dPCR analysis	<input checked="" type="checkbox"/>
Treatment procedure	<input type="checkbox"/>	Reaction temperatures and times	<input checked="" type="checkbox"/>	Amplicon confirmation method (probe, melt curve details, etc)	<input checked="" type="checkbox"/>	Explanation of control results, example plots	<input checked="" type="checkbox"/>
Reagents	<input type="checkbox"/>	Reaction reagents and concentrations	<input checked="" type="checkbox"/>	Probe sequence, concentration, vendor, reference	<input checked="" type="checkbox"/>	Analysis- qPCR	
Sample Reduction		Priming method	<input checked="" type="checkbox"/>	Instrumentation	<input checked="" type="checkbox"/>	Technical replicates, number, calculations	<input type="checkbox"/>
Reduction procedure	<input checked="" type="checkbox"/>	Reaction volume, added template amount	<input checked="" type="checkbox"/>	Inhibition assessment procedure	<input checked="" type="checkbox"/>	Calibration standards, description, source	<input type="checkbox"/>
Reagents	<input checked="" type="checkbox"/>	RT efficiency assessment procedure (if 2-step)	<input type="checkbox"/>	Inhibition control description (if used)	<input type="checkbox"/>	Method of quantifying standards	<input type="checkbox"/>
Concentration factor	<input checked="" type="checkbox"/>	RT control description (if two-step)	<input type="checkbox"/>	Number of samples tested and found inhibited	<input checked="" type="checkbox"/>	Calibration curve slope	<input type="checkbox"/>
		RT efficiency reported (if 2-step)	<input type="checkbox"/>			Calibration curve R2	<input type="checkbox"/>
						Lowest standard measured or 95% LOD	<input type="checkbox"/>
						Cq value determination methods	<input type="checkbox"/>
Note to users: This checklist is provided as guidance for best practices for reporting, but is not meant to be prescriptive. Not all items in the check list will apply to all studies. Please see Borchardt et al. The Environmental							
Version 2.0							
This version maintained by Borchardt, Boehm, Saik, Noble, Wigginton, Spencer							
Date: 4 August 2023							

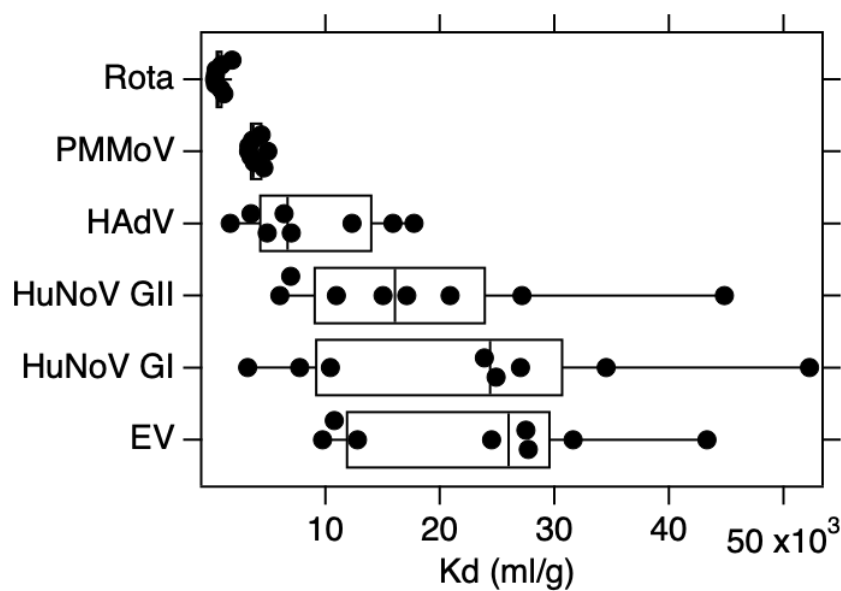
243
244



245

246 **Figure S3. Multiplex assay performance.** The concentrations of the different targets in units of copies
 247 per reaction input and measured in each experiment is provided. The white symbols are for reactions
 248 without the 7 background nucleic-acid targets and black symbols include high concentrations of the 7
 249 other nucleic-acid targets. Error bars are standard deviations, if error bars cannot be seen, then they
 250 are smaller than the symbol. The line represents the 1:1 line. “Meas” is measured, “Rota” is rotavirus.
 251 Abbreviations for the different targets are provided in the main text.

252

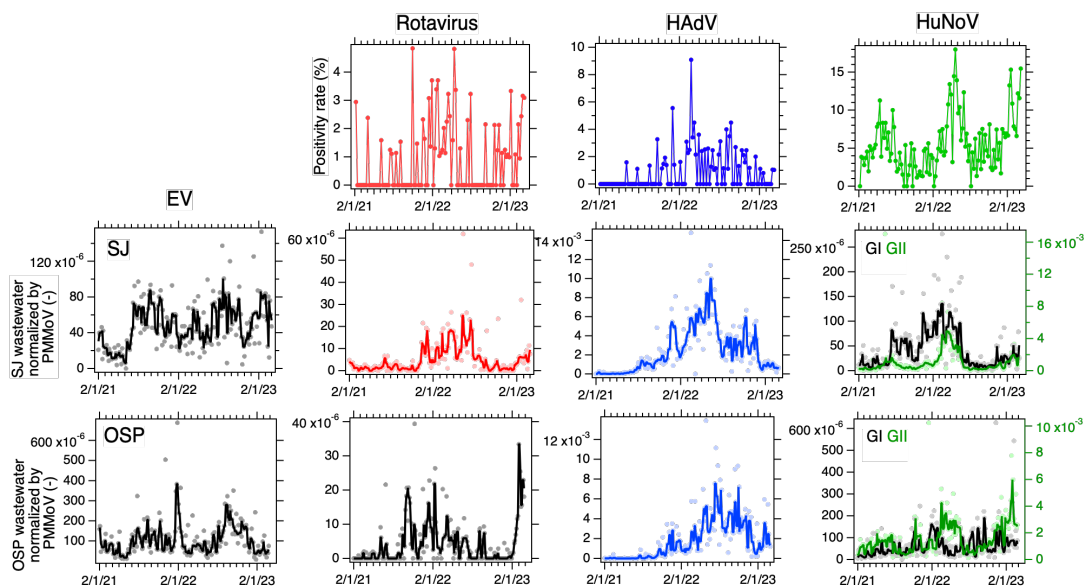


254

255 **Figure S4. Distribution of K_d values measured in eight samples of paired liquid and solid samples from**
 256 **OSP for each viral target considered herein. The points represent each of the eight K_d values. The**
 257 **midline of each box is the median and the edges of the box represent the 25th and 75th percentiles. The**
 258 **whiskers extend to the 9th and 91st percentiles. Rota is rotavirus, and the remaining abbreviations are**
 259 **used in the text of the paper. The order of the viruses from top to bottom of the y-axis is smallest to**
 260 **largest median K_d .**

261

262



263

264 **Figure S5. PMMoV-normalized wastewater data. Positivity rates from the clinical laboratory for**
265 **rotavirus, adenovirus group F, and norovirus infections (top panels), and concentrations of EV,**
266 **rotavirus, HAdV, and HuNoV G1 and GII nucleic-acids in wastewater solids at OSP (middle panels) and**
267 **SJ (bottom panels) normalized by concentrations of PMMoV measured in the sample. The solid lines in**
268 **the wastewater plots represent smoothing using the median of 3-adjacent samples. The norovirus plots**
269 **show GII in green (right axes) and GI in black (left axis).**

270

271