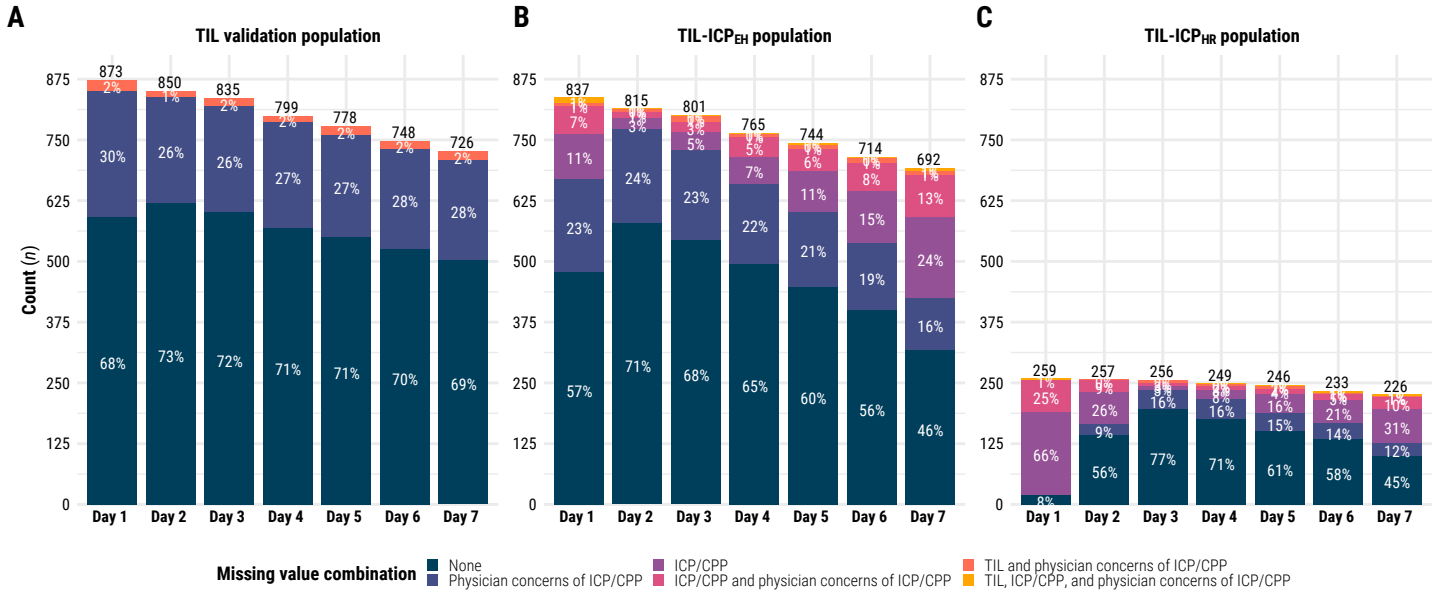
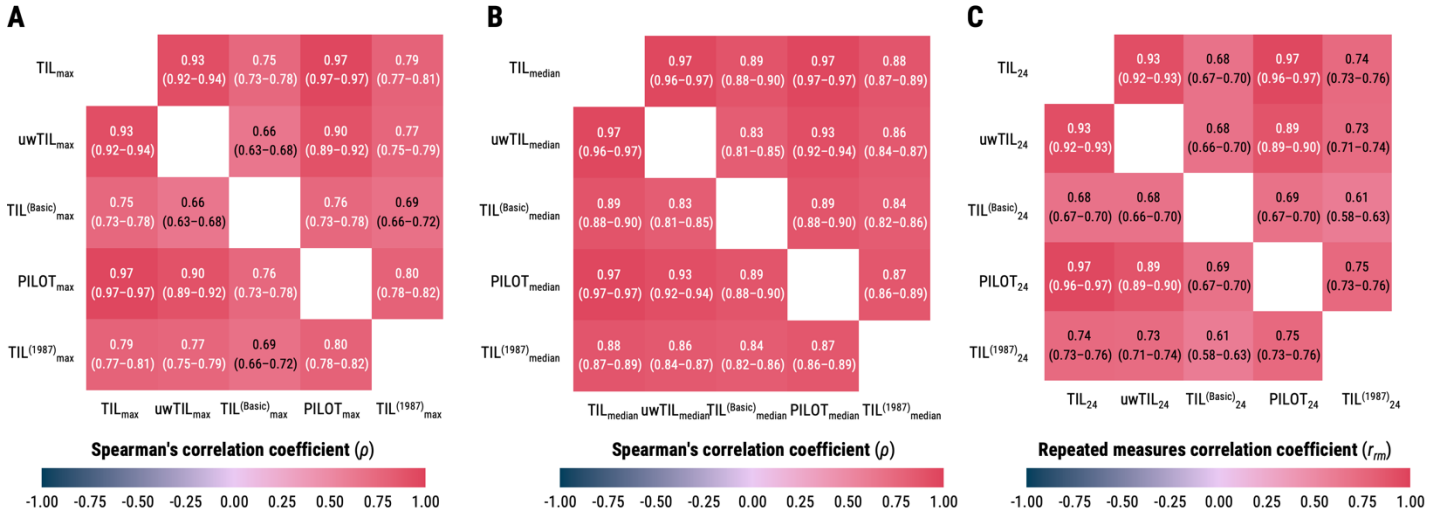


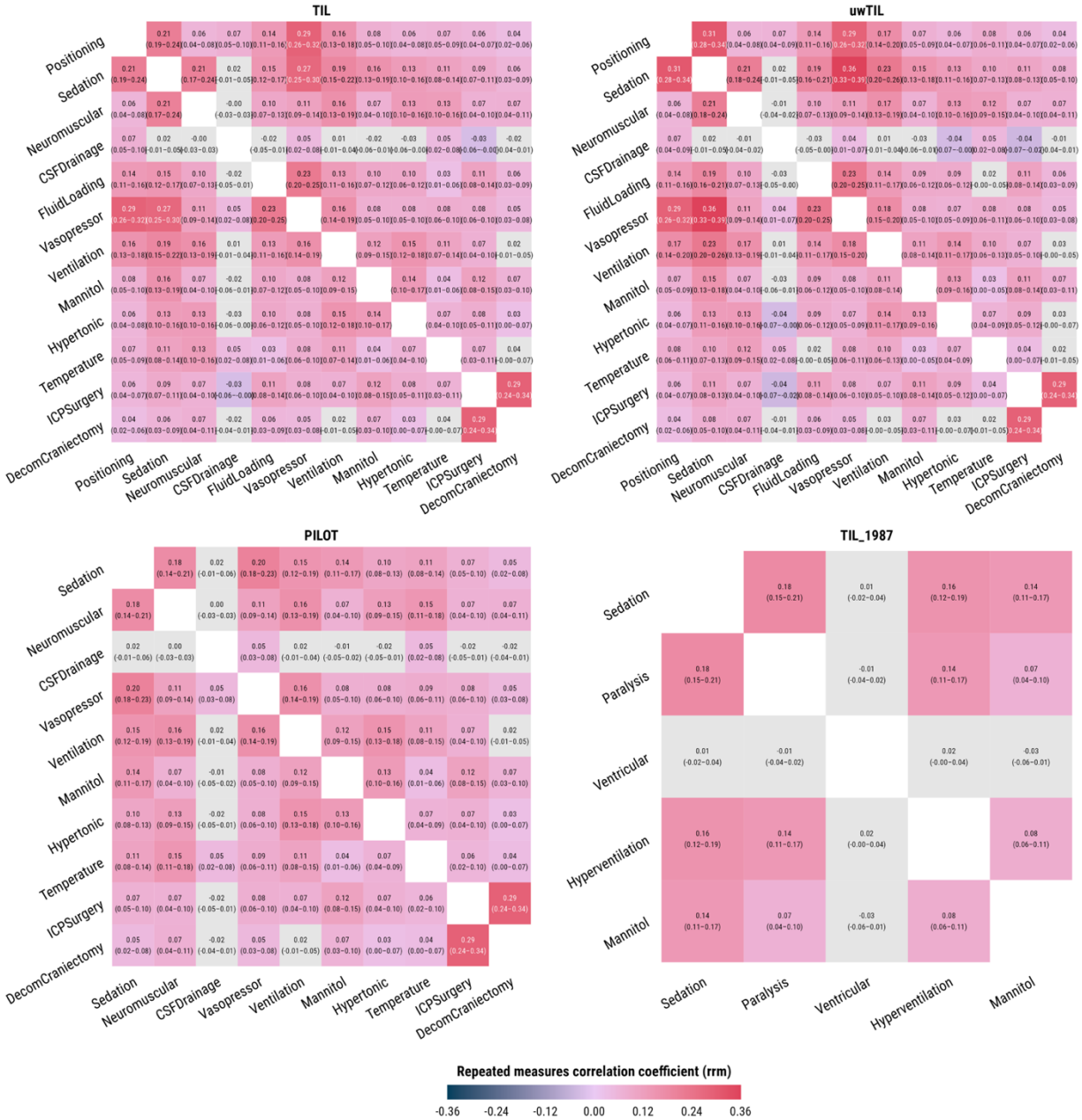
Supplementary Figure S1. Missingness of static study measures. Abbreviations: GCS_NA=indicator variable representing cases with missing values for Glasgow Coma Scale at ICU admission, GOSE_NA=indicator variable representing cases with missing values for Glasgow Outcome Scale–Extended at six months post-injury, ICU=intensive care unit, MarshallCT_NA=indicator variable representing cases with missing values for Marshall CT classification at ICU admission, Pr_GOSE_gt_•_NA=indicator variable representing cases with missing values for “probability of GOSE greater than • at six months post-injury” as previously calculated from the first 24 hours of admission,²⁷ RefractoryICP_NA=indicator variable representing cases with missing values for refractory intracranial hypertension during ICU stay. A separate missingness UpSet plot is shown for the **(A)** TIL validation population ($n=873$), **(B)** TIL-ICP_{EH} sub-population ($n=837$), and **(C)** TIL-ICP_{HR} sub-population ($n=259$), as defined in Figure 1.



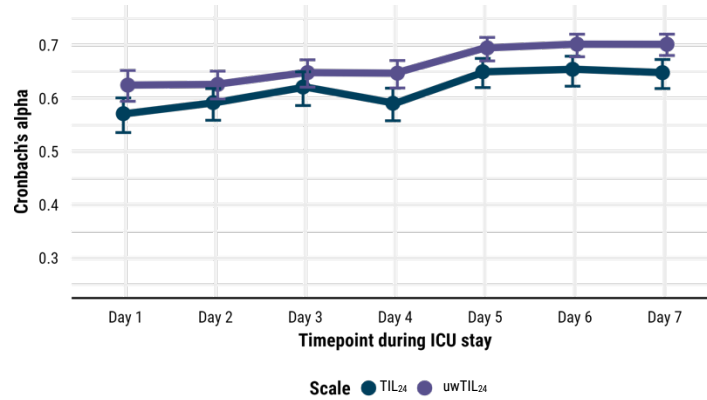
Supplementary Figure S2. Study populations remaining in ICU over first week and missingness of longitudinal study measures. Abbreviations: CPP=cerebral perfusion pressure, EH=end-hour, HR=high-resolution, ICP=intracranial pressure, ICU=intensive care unit, TIL=Therapy Intensity Level scale,^{8,9} TIL-ICP_{EH}=end-hour ICP sub-population, TIL-ICP_{HR}=high-resolution ICP sub-population. The values above each stacked bar plot represent the number of patients remaining at each day of ICU stay (i.e., expected cases), excluding those who have already had a decision to withdraw life-sustaining therapies. The value in each component of the stacked bar plot represents the percent of expected cases per each day of ICU stay that falls into the corresponding missing value combination of that colour. A separate missingness stacked bar plot is shown for the (A) TIL validation population ($n=873$), (B) TIL-ICP_{EH} sub-population ($n=837$), and (C) TIL-ICP_{HR} sub-population ($n=259$), as defined in Figure 1.



Supplementary Figure S3. Correlation matrices between total scores of TIL and alternative scales. Abbreviations: ICU=intensive care unit, PILOT=Paediatric Intensity Level of Therapy scale,⁷ TIL=Therapy Intensity Level scale,^{8,9} TIL⁽¹⁹⁸⁷⁾=original Therapy Intensity Level scale published in 1987,⁶ TIL^(Basic)=condensed TIL scale,⁸ uwTIL=unweighted TIL scale in which sub-item scores are replaced by the ascending rank index within the item. The numeric definition of each scale is listed in Table 1, and the calculation of daily (e.g., TIL₂₄), maximum (e.g., TIL_{max}), and median (e.g., TIL_{median}) scores are described in the Methods. The values in parentheses represent 95% confidence intervals derived from bootstrapping with 1,000 resamples of unique patients over 100 missing value imputations. **(A)** Spearman's correlation matrix between maximum total scores of TIL and alternative scales. **(B)** Spearman's correlation matrix between median total scores of TIL and alternative scales. **(C)** Repeated measures (i.e., within-individual) correlation matrix between daily total scores of TIL and alternative scales.



Supplementary Figure S4. Inter-item correlation matrices for daily scores of TIL and alternative scales. Abbreviations: ICU=intensive care unit, PILOT=Paediatric Intensity Level of Therapy scale,⁷ TIL=Therapy Intensity Level scale,^{8,9} TIL⁽¹⁹⁸⁷⁾=original Therapy Intensity Level scale published in 1987,⁶ TIL^(Basic)=condensed TIL scale,⁸ uwTIL=unweighted TIL scale in which sub-item scores are replaced by the ascending rank index within the item. The items and associated scales of each scale are described in Table 1. The values in parentheses represent 95% confidence intervals derived from bootstrapping with 1,000 resamples of unique patients over 100 missing value imputations, and light grey boxes designate statistically insignificant correlations.



Supplementary Figure S5. Internal reliability of TIL and uwTIL. Abbreviations: ICU=intensive care unit, TIL₂₄=Therapy Intensity Level scale score of calendar day,^{8,9} uwTIL₂₄=unweighted TIL scale score of calendar day in which sub-item scores are replaced by the ascending rank index within the item. The numeric definition of each scale is listed in Table 1, and the calculation of daily (e.g., TIL₂₄) scores are described in the Methods. The bars represent 95% confidence intervals derived from bootstrapping with 1,000 resamples of unique patients over 100 missing value imputations.

Supplementary Table S1. Significant characteristic differences associated with longitudinal variable missingness.

Validation population	Day in ICU	Variable	Nonmissing count	Missing count	Characteristic	Value	Nonmissing group	Missing group	p-value†
TIL	Day 1	Physician concerns of ICP/ CPP	592	281	Centre distribution*		46	35	0.000
			504	245	Baseline functional prognosis	Pr(GOSE>4)	37.2 (19.3–56.9)	45.7 (22.2–64.6)	0.004
			504	245	Baseline functional prognosis	Pr(GOSE>5)	19.6 (10.5–35.9)	23.3 (9.5–39.0)	0.039
			504	245	Baseline functional prognosis	Pr(GOSE>6)	11.4 (5.7–19.6)	14.0 (6.3–21.9)	0.013
			504	245	Baseline functional prognosis	Pr(GOSE>7)	4.4 (2.2–8.7)	5.8 (2.5–10.2)	0.005
			592	281	TILmax		10.0 (7.0–15.0)	10.0 (6.0–14.0)	0.012
			592	281	TILmedian		6.0 (3.0–10.0)	5.0 (3.0–9.0)	0.017
592	260	TIL24		8.0 (5.0–12.0)	6.0 (3.0–11.0)	0.002			
TIL	Day 2	TIL24	839	11	Centre distribution*		51	11	0.000
			730	8	Baseline functional prognosis	Pr(GOSE>6)	12.4 (6.1–20.9)	6.0 (3.3–9.7)	0.021
TIL	Day 2	Physician concerns of ICP/ CPP	621	229	Centre distribution*		45	37	0.000
			539	199	Baseline functional prognosis	Pr(GOSE>4)	38.2 (21.1–57.7)	46.0 (20.7–63.1)	0.038
			539	199	Baseline functional prognosis	Pr(GOSE>6)	11.9 (6.0–19.8)	13.8 (6.3–22.4)	0.033
			539	199	Baseline functional prognosis	Pr(GOSE>7)	4.6 (2.2–8.8)	5.5 (2.4–10.5)	0.020
			621	229	TILmax		10.0 (7.0–15.0)	9.0 (5.0–14.0)	0.004
			621	229	TILmedian		6.0 (3.0–10.0)	5.0 (3.0–9.0)	0.009
			621	218	TIL24		6.0 (4.0–11.0)	6.0 (4.0–9.0)	0.007
TIL	Day 3	TIL24	715	14	Six-month GOSE	1	164 (23%)	12 (86%)	0.000
			715	14	Six-month GOSE	2_or_3	180 (25%)	1 (7%)	0.000
			715		Six-month GOSE	4	70 (10%)		0.000
			715	14	Six-month GOSE	5	121 (17%)	1 (7%)	0.000
			715		Six-month GOSE	6	70 (10%)		0.000
			715		Six-month GOSE	7	54 (8%)		0.000
			715		Six-month GOSE	8	56 (8%)		0.000
			715	14	Baseline functional prognosis	Pr(GOSE>1)	85.5 (65.4–94.9)	47.9 (24.0–69.0)	0.003
			715	14	Baseline functional prognosis	Pr(GOSE>3)	55.2 (30.7–76.1)	18.4 (7.7–43.2)	0.003
			715	14	Baseline functional prognosis	Pr(GOSE>4)	40.6 (21.2–59.7)	14.6 (5.0–30.7)	0.007
			715	14	Baseline functional prognosis	Pr(GOSE>5)	21.6 (10.9–36.9)	7.6 (2.5–18.0)	0.007
			715	14	Baseline functional prognosis	Pr(GOSE>6)	12.5 (6.3–20.9)	4.2 (1.7–8.0)	0.021
			715	14	Baseline functional prognosis	Pr(GOSE>7)	5.1 (2.4–9.2)	1.2 (0.5–4.5)	0.001
			819	16	TILmedian		5.0 (3.0–9.0)	9.0 (6.0–11.8)	0.032
TIL	Day 3	Physician concerns of ICP/ CPP	602	233	Centre distribution*		44	37	0.000
			602	233	TILmax		10.0 (7.0–15.0)	10.0 (5.0–14.0)	0.021
			602	217	TIL24		6.0 (4.0–10.0)	5.0 (3.0–8.0)	0.001
TIL	Day 4	TIL24	642	10	Marshall CT	1	15 (2%)	2 (20%)	0.011
			642	10	Marshall CT	2	249 (39%)	3 (30%)	0.011
			642	10	Marshall CT	3	80 (12%)	2 (20%)	0.011
			642		Marshall CT	4	14 (2%)		0.011
			642	10	Marshall CT	5_or_6	284 (44%)	3 (30%)	0.011
			787	12	TILmax		10.0 (6.0–15.0)	8.5 (4.5–11.0)	0.048
TIL	Day 4	Physician concerns of ICP/ CPP	569	230	Centre distribution*		45	36	0.000
			493	200	Baseline functional prognosis	Pr(GOSE>7)	4.8 (2.5–8.8)	5.7 (2.6–10.3)	0.026
			569	230	TILmax		10.0 (7.0–15.0)	10.0 (5.2–14.0)	0.004
			569	230	TILmedian		6.0 (3.0–10.0)	5.0 (3.0–8.0)	0.001
			569	218	TIL24		6.0 (3.0–10.0)	5.0 (3.0–8.0)	0.002
TIL	Day 5	TIL24	663	12	Six-month GOSE	1	138 (21%)	9 (75%)	0.001
			663	12	Six-month GOSE	2_or_3	176 (27%)	2 (17%)	0.001
			663		Six-month GOSE	4	69 (10%)		0.001
			663		Six-month GOSE	5	119 (18%)		0.001
			663		Six-month GOSE	6	66 (10%)		0.001

Validation population	Day in ICU	Variable	Nonmissing count	Missing count	Characteristic	Value	Nonmissing group	Missing group	p-value†
			663		Six-month GOSE	7	49 (7%)		0.001
			663	12	Six-month GOSE	8	46 (7%)	1 (8%)	0.001
			663	12	Baseline functional prognosis	Pr(GOSE>1)	85.7 (66.1–95.1)	63.2 (38.3–72.6)	0.022
			663	12	Baseline functional prognosis	Pr(GOSE>3)	55.5 (32.3–76.1)	29.8 (11.4–40.0)	0.005
			663	12	Baseline functional prognosis	Pr(GOSE>4)	41.0 (22.7–59.6)	23.5 (7.2–29.8)	0.011
			663	12	Baseline functional prognosis	Pr(GOSE>5)	21.8 (11.2–37.0)	11.6 (4.0–16.5)	0.046
TIL	Day 5	Physician concerns of ICP/ CPP	551	227	Centre distribution*		42	36	0.000
			551	227	TILmedian		6.0 (3.8–10.0)	5.0 (3.0–8.0)	0.004
			551	210	TIL24		6.0 (3.0–10.0)	5.0 (2.0–9.0)	0.000
TIL	Day 6	TIL24	633	11	Six-month GOSE	1	127 (20%)	8 (73%)	0.003
			633	11	Six-month GOSE	2_or_3	175 (28%)	2 (18%)	0.003
			633		Six-month GOSE	4	68 (11%)		0.003
			633		Six-month GOSE	5	112 (18%)		0.003
			633		Six-month GOSE	6	64 (10%)		0.003
			633		Six-month GOSE	7	44 (7%)		0.003
			633	11	Six-month GOSE	8	43 (7%)	1 (9%)	0.003
			633	11	Baseline functional prognosis	Pr(GOSE>3)	55.5 (33.4–75.6)	28.5 (17.3–40.4)	0.011
			633	11	Baseline functional prognosis	Pr(GOSE>4)	41.1 (23.5–59.0)	22.2 (13.5–29.8)	0.021
			733	15	TILmax		10.0 (7.0–15.0)	8.0 (4.0–12.0)	0.022
TIL	Day 6	Physician concerns of ICP/ CPP	527	221	Centre distribution*		42	35	0.000
			527	221	TILmax		11.0 (7.0–15.0)	10.0 (6.0–14.0)	0.005
			527	221	TILmedian		6.0 (4.0–10.0)	5.0 (3.0–8.0)	0.000
			527	206	TIL24		5.0 (3.0–10.0)	4.5 (2.0–8.0)	0.003
TIL	Day 7	TIL24	709	17	Centre distribution*		51	12	0.001
TIL	Day 7	Physician concerns of ICP/ CPP	504	222	Centre distribution*		41	39	0.000
			504	222	TILmedian		6.0 (4.0–10.0)	5.0 (3.0–8.0)	0.003
			504	205	TIL24		5.0 (2.0–9.0)	4.0 (2.0–7.0)	0.009
TIL-ICPEH	Day 1	TIL24	820	17	TILmax		10.0 (6.0–15.0)	6.0 (4.0–10.0)	0.012
			820	17	TILmedian		5.5 (3.0–10.0)	4.5 (2.0–6.0)	0.047
TIL-ICPEH	Day 1	ICP/ CPP	677	160	Centre distribution*		50	40	0.000
			555	126	Marshall CT	1	11 (2%)	5 (4%)	0.013
			555	126	Marshall CT	2	187 (34%)	61 (48%)	0.013
			555	126	Marshall CT	3	75 (14%)	14 (11%)	0.013
			555	126	Marshall CT	4	14 (3%)	2 (2%)	0.013
			555	126	Marshall CT	5_or_6	268 (48%)	44 (35%)	0.013
			593	132	Baseline functional prognosis	Pr(GOSE>3)	50.9 (27.3–73.6)	63.2 (31.5–80.4)	0.008
			593	132	Baseline functional prognosis	Pr(GOSE>4)	37.0 (18.7–56.7)	47.5 (22.7–65.0)	0.008
			593	132	Baseline functional prognosis	Pr(GOSE>5)	19.3 (9.5–33.7)	27.7 (14.1–42.7)	0.001
			593	132	Baseline functional prognosis	Pr(GOSE>6)	11.4 (5.6–18.9)	14.0 (7.4–23.8)	0.004
			593	132	Baseline functional prognosis	Pr(GOSE>7)	4.5 (2.2–8.9)	5.9 (2.9–10.1)	0.020
			671	149	TIL24		8.0 (5.0–12.0)	5.0 (2.0–9.0)	0.000
TIL-ICPEH	Day 1	Physician concerns of ICP/ CPP	572	265	Centre distribution*		45	35	0.000
			490	235	Baseline functional prognosis	Pr(GOSE>4)	36.6 (18.9–55.9)	44.0 (21.0–63.1)	0.008
			490	235	Baseline functional prognosis	Pr(GOSE>6)	11.2 (5.6–19.1)	13.7 (6.1–21.5)	0.017
			490	235	Baseline functional prognosis	Pr(GOSE>7)	4.4 (2.2–8.7)	5.5 (2.4–10.2)	0.008
			572	265	TILmax		10.0 (7.0–15.0)	10.0 (6.0–14.0)	0.012
			572	265	TILmedian		6.0 (3.0–10.0)	5.0 (3.0–9.0)	0.016
			572	248	TIL24		8.0 (5.0–12.0)	6.0 (3.0–11.0)	0.009
TIL-ICPEH	Day 2	TIL24	807	8	Centre distribution*		50	8	0.000
			707	7	Baseline functional prognosis	Pr(GOSE>6)	12.1 (6.0–19.9)	5.0 (3.2–8.2)	0.038
TIL-ICPEH	Day 2	ICP/ CPP	780	35	Centre distribution*		51	21	0.003

Validation population	Day in ICU	Variable	Nonmissing count	Missing count	Characteristic	Value	Nonmissing group	Missing group	p-value†
			688	26	Baseline functional prognosis	Pr(GOSE>3)	52.9 (29.5–74.6)	73.4 (46.3–85.3)	0.044
			688	26	Baseline functional prognosis	Pr(GOSE>4)	38.6 (19.8–57.8)	56.3 (30.8–70.9)	0.030
			688	26	Baseline functional prognosis	Pr(GOSE>5)	20.3 (10.0–35.3)	40.3 (13.1–47.8)	0.018
			688	26	Baseline functional prognosis	Pr(GOSE>6)	11.8 (5.9–19.4)	21.4 (7.5–32.4)	0.019
			688	26	Baseline functional prognosis	Pr(GOSE>7)	4.6 (2.2–8.9)	8.3 (2.8–15.5)	0.041
TIL-ICPEH	Day 2	Physician concerns of ICP/ CPP	603	212	Centre distribution*		45	36	0.000
			525	189	Baseline functional prognosis	Pr(GOSE>7)	4.6 (2.2–8.7)	5.3 (2.3–10.5)	0.041
			603	212	TILmax		10.0 (7.0–15.0)	9.0 (5.8–14.0)	0.009
			603	212	TILmedian		6.0 (3.0–10.0)	5.0 (3.0–8.0)	0.010
			603	204	TIL24		6.0 (4.0–11.0)	6.0 (4.0–9.0)	0.008
TIL-ICPEH	Day 3	TIL24	693	13	Six-month GOSE	1	161 (23%)	11 (85%)	0.000
			693	13	Six-month GOSE	2_or_3	179 (26%)	1 (8%)	0.000
			693		Six-month GOSE	4	66 (10%)		0.000
			693	13	Six-month GOSE	5	116 (17%)	1 (8%)	0.000
			693		Six-month GOSE	6	67 (10%)		0.000
			693		Six-month GOSE	7	51 (7%)		0.000
			693		Six-month GOSE	8	53 (8%)		0.000
			693	13	Baseline functional prognosis	Pr(GOSE>1)	85.0 (64.5–94.9)	40.0 (23.4–67.9)	0.003
			693	13	Baseline functional prognosis	Pr(GOSE>3)	54.6 (30.3–75.0)	12.4 (7.4–39.6)	0.003
			693	13	Baseline functional prognosis	Pr(GOSE>4)	40.3 (21.0–58.8)	9.5 (4.9–29.9)	0.006
			693	13	Baseline functional prognosis	Pr(GOSE>5)	21.2 (10.6–36.3)	7.2 (2.2–15.5)	0.010
			693	13	Baseline functional prognosis	Pr(GOSE>6)	12.4 (6.1–20.0)	3.5 (1.6–7.1)	0.032
			693	13	Baseline functional prognosis	Pr(GOSE>7)	4.9 (2.4–9.1)	1.1 (0.5–4.4)	0.001
			788	13	TILmedian		5.0 (3.0–9.0)	9.0 (7.0–14.0)	0.007
TIL-ICPEH	Day 3	ICP/ CPP	740	61	Centre distribution*		48	32	0.000
			657	49	Six-month GOSE	1	166 (25%)	6 (12%)	0.034
			657	49	Six-month GOSE	2_or_3	169 (26%)	11 (22%)	0.034
			657	49	Six-month GOSE	4	64 (10%)	2 (4%)	0.034
			657	49	Six-month GOSE	5	108 (16%)	9 (18%)	0.034
			657	49	Six-month GOSE	6	60 (9%)	7 (14%)	0.034
			657	49	Six-month GOSE	7	45 (7%)	6 (12%)	0.034
			657	49	Six-month GOSE	8	45 (7%)	8 (16%)	0.034
			657	49	Baseline functional prognosis	Pr(GOSE>4)	38.7 (20.8–57.1)	58.3 (18.7–72.0)	0.026
			657	49	Baseline functional prognosis	Pr(GOSE>5)	20.2 (10.2–34.4)	36.1 (10.6–48.2)	0.010
			657	49	Baseline functional prognosis	Pr(GOSE>6)	11.7 (6.0–18.9)	16.1 (6.6–27.1)	0.017
			657	49	Baseline functional prognosis	Pr(GOSE>7)	4.6 (2.3–8.8)	7.2 (2.7–12.9)	0.048
			740	61	TILmax		10.0 (7.0–15.0)	7.0 (4.0–12.0)	0.005
			740	61	TILmedian		6.0 (4.0–10.0)	3.0 (1.0–5.0)	0.000
			729	59	TIL24		6.0 (4.0–10.0)	3.0 (0.0–5.5)	0.000
TIL-ICPEH	Day 3	Physician concerns of ICP/ CPP	582	219	Centre distribution*		44	36	0.000
			582	219	TILmax		10.0 (7.0–15.0)	10.0 (6.0–14.0)	0.020
			582	219	TILmedian		6.0 (3.5–10.0)	5.0 (3.0–8.2)	0.037
			582	206	TIL24		6.0 (4.0–10.0)	5.0 (3.0–8.0)	0.000
TIL-ICPEH	Day 4	ICP/ CPP	667	98	Centre distribution*		48	37	0.000
			667	98	Age		46.0 (29.0–61.0)	53.0 (34.2–64.8)	0.030
			589	81	Six-month GOSE	1	136 (23%)	10 (12%)	0.003
			589	81	Six-month GOSE	2_or_3	162 (28%)	18 (22%)	0.003
			589	81	Six-month GOSE	4	62 (11%)	4 (5%)	0.003
			589	81	Six-month GOSE	5	100 (17%)	16 (20%)	0.003
			589	81	Six-month GOSE	6	54 (9%)	11 (14%)	0.003
			589	81	Six-month GOSE	7	39 (7%)	9 (11%)	0.003

Validation population	Day in ICU	Variable	Nonmissing count	Missing count	Characteristic	Value	Nonmissing group	Missing group	p-value†
			589	81	Six-month GOSE	8	36 (6%)	13 (16%)	0.003
			589	81	Baseline functional prognosis	Pr(GOSE>3)	53.4 (30.8–73.6)	64.1 (33.6–82.3)	0.023
			589	81	Baseline functional prognosis	Pr(GOSE>4)	39.7 (21.3–56.5)	49.4 (26.1–71.5)	0.004
			589	81	Baseline functional prognosis	Pr(GOSE>5)	20.5 (10.6–34.2)	30.9 (14.0–48.2)	0.001
			589	81	Baseline functional prognosis	Pr(GOSE>6)	11.7 (6.1–18.7)	16.5 (9.3–25.7)	0.001
			589	81	Baseline functional prognosis	Pr(GOSE>7)	4.6 (2.5–8.7)	8.1 (2.7–12.6)	0.003
			667	98	TILmax		11.0 (7.0–15.0)	6.0 (4.0–10.0)	0.000
			667	98	TILmedian		6.0 (4.0–10.0)	2.0 (1.0–3.5)	0.000
			661	96	TIL24		6.0 (4.0–10.0)	1.0 (0.0–3.0)	0.000
TIL-ICPEH	Day 4	Physician concerns of ICP/ CPP	550	215	Centre distribution*		45	35	0.000
			550	215	TILmax		10.0 (7.0–15.0)	10.0 (6.0–14.0)	0.009
			550	215	TILmedian		6.0 (3.5–10.0)	5.0 (3.0–8.0)	0.001
			550	207	TIL24		6.0 (3.0–10.0)	5.0 (3.0–8.0)	0.003
TIL-ICPEH	Day 5	TIL24	642	10	Six-month GOSE	1	135 (21%)	8 (80%)	0.002
			642	10	Six-month GOSE	2_or_3	175 (27%)	2 (20%)	0.002
			642		Six-month GOSE	4	65 (10%)		0.002
			642		Six-month GOSE	5	114 (18%)		0.002
			642		Six-month GOSE	6	63 (10%)		0.002
			642		Six-month GOSE	7	46 (7%)		0.002
			642		Six-month GOSE	8	44 (7%)		0.002
			642	10	Baseline functional prognosis	Pr(GOSE>1)	85.7 (65.6–94.9)	60.4 (35.0–69.0)	0.016
			642	10	Baseline functional prognosis	Pr(GOSE>3)	55.1 (31.3–75.0)	29.0 (9.5–38.0)	0.000
			642	10	Baseline functional prognosis	Pr(GOSE>4)	40.7 (22.4–58.7)	21.6 (6.0–28.6)	0.000
			642	10	Baseline functional prognosis	Pr(GOSE>5)	21.4 (11.0–36.3)	10.3 (2.9–15.0)	0.000
			642	10	Baseline functional prognosis	Pr(GOSE>6)	12.4 (6.4–20.0)	5.0 (2.1–8.0)	0.001
			642	10	Baseline functional prognosis	Pr(GOSE>7)	5.1 (2.5–9.2)	2.3 (0.5–4.5)	0.002
TIL-ICPEH	Day 5	ICP/ CPP	613	131	Centre distribution*		48	40	0.002
			503	103	Marshall CT	1	12 (2%)	3 (3%)	0.027
			503	103	Marshall CT	2	177 (35%)	53 (51%)	0.027
			503	103	Marshall CT	3	69 (14%)	9 (9%)	0.027
			503	103	Marshall CT	4	11 (2%)	3 (3%)	0.027
			503	103	Marshall CT	5_or_6	234 (47%)	35 (34%)	0.027
			609	128	Refractory intracranial hypertension		113 (19%)	9 (7%)	0.002
			539	113	Six-month GOSE	1	129 (24%)	14 (12%)	0.036
			539	113	Six-month GOSE	2_or_3	146 (27%)	31 (27%)	0.036
			539	113	Six-month GOSE	4	58 (11%)	7 (6%)	0.036
			539	113	Six-month GOSE	5	88 (16%)	26 (23%)	0.036
			539	113	Six-month GOSE	6	49 (9%)	14 (12%)	0.036
			539	113	Six-month GOSE	7	36 (7%)	10 (9%)	0.036
			539	113	Six-month GOSE	8	33 (6%)	11 (10%)	0.036
			539	113	Baseline functional prognosis	Pr(GOSE>3)	53.1 (31.1–73.0)	61.8 (30.8–81.9)	0.031
			539	113	Baseline functional prognosis	Pr(GOSE>4)	39.2 (21.2–56.4)	44.9 (24.8–69.1)	0.011
			539	113	Baseline functional prognosis	Pr(GOSE>5)	19.9 (10.5–33.4)	26.8 (12.7–47.0)	0.001
			539	113	Baseline functional prognosis	Pr(GOSE>6)	11.6 (6.1–18.5)	16.6 (7.8–25.5)	0.000
			539	113	Baseline functional prognosis	Pr(GOSE>7)	4.5 (2.3–8.5)	7.3 (2.7–12.0)	0.002
			613	131	TILmax		11.0 (7.0–15.0)	7.0 (4.5–10.5)	0.000
			613	131	TILmedian		6.0 (4.0–10.0)	3.0 (1.0–4.0)	0.000
			603	128	TIL24		6.0 (4.0–10.5)	2.0 (1.0–3.2)	0.000
TIL-ICPEH	Day 5	Physician concerns of ICP/ CPP	531	213	Centre distribution*		42	35	0.000
			531	213	TILmedian		6.0 (4.0–10.0)	5.0 (3.0–8.0)	0.009
			531	200	TIL24		6.0 (3.0–10.0)	5.0 (2.0–9.0)	0.001

Validation population	Day in ICU	Variable	Nonmissing count	Missing count	Characteristic	Value	Nonmissing group	Missing group	p-value†
TIL-ICPEH	Day 6	TIL24	612	9	Six-month GOSE	1	124 (20%)	7 (78%)	0.005
			612	9	Six-month GOSE	2_or_3	174 (28%)	2 (22%)	0.005
			612		Six-month GOSE	4	64 (10%)		0.005
			612		Six-month GOSE	5	107 (17%)		0.005
			612		Six-month GOSE	6	61 (10%)		0.005
			612		Six-month GOSE	7	41 (7%)		0.005
			612		Six-month GOSE	8	41 (7%)		0.005
			612	9	Baseline functional prognosis	Pr(GOSE>1)	85.7 (66.4–94.8)	66.8 (38.8–75.1)	0.046
			612	9	Baseline functional prognosis	Pr(GOSE>3)	55.1 (32.6–74.8)	26.9 (10.7–39.6)	0.001
			612	9	Baseline functional prognosis	Pr(GOSE>4)	40.8 (22.8–57.8)	18.8 (8.5–29.8)	0.000
			612	9	Baseline functional prognosis	Pr(GOSE>5)	21.4 (11.2–35.6)	11.0 (4.2–15.5)	0.000
			612	9	Baseline functional prognosis	Pr(GOSE>6)	12.4 (6.4–19.6)	6.5 (2.1–8.2)	0.005
			612	9	Baseline functional prognosis	Pr(GOSE>7)	5.0 (2.5–8.9)	2.6 (0.7–4.4)	0.005
TIL-ICPEH	Day 6	ICP/ CPP	547	167	Centre distribution*		48	39	0.000
			547	167	Age		44.0 (28.0–59.5)	51.0 (34.0–65.5)	0.004
			543	164	Refractory intracranial hypertension		110 (20%)	10 (6%)	0.000
			480	141	Six-month GOSE	1	106 (22%)	25 (18%)	0.028
			480	141	Six-month GOSE	2_or_3	137 (29%)	39 (28%)	0.028
			480	141	Six-month GOSE	4	57 (12%)	7 (5%)	0.028
			480	141	Six-month GOSE	5	73 (15%)	34 (24%)	0.028
			480	141	Six-month GOSE	6	45 (9%)	16 (11%)	0.028
			480	141	Six-month GOSE	7	34 (7%)	7 (5%)	0.028
			480	141	Six-month GOSE	8	28 (6%)	13 (9%)	0.028
			480	141	Baseline functional prognosis	Pr(GOSE>6)	12.2 (6.1–18.6)	12.9 (7.3–21.6)	0.044
			547	167	TILmax		11.0 (8.0–16.0)	7.0 (5.0–11.0)	0.000
			547	167	TILmedian		7.0 (4.0–10.0)	3.0 (2.0–5.0)	0.000
537	166	TIL24		6.0 (4.0–10.0)	2.0 (1.0–3.0)	0.000			
TIL-ICPEH	Day 6	Physician concerns of ICP/ CPP	509	205	Centre distribution*		42	34	0.000
			509	205	TILmax		11.0 (7.0–15.0)	10.0 (6.0–14.0)	0.021
			509	205	TILmedian		6.0 (4.0–10.0)	5.0 (3.0–8.0)	0.002
			509	194	TIL24		5.0 (3.0–10.0)	5.0 (2.0–8.0)	0.006
TIL-ICPEH	Day 7	TIL24	679	13	Centre distribution*		50	9	0.008
TIL-ICPEH	Day 7	ICP/ CPP	433	259	Centre distribution*		44	43	0.000
			359	208	Marshall CT	1	7 (2%)	7 (3%)	0.015
			359	208	Marshall CT	2	119 (33%)	96 (46%)	0.015
			359	208	Marshall CT	3	53 (15%)	19 (9%)	0.015
			359	208	Marshall CT	4	9 (3%)	4 (2%)	0.015
			359	208	Marshall CT	5_or_6	171 (48%)	82 (39%)	0.015
			430	255	Refractory intracranial hypertension		98 (23%)	17 (7%)	0.000
			380	223	Six-month GOSE	1	89 (23%)	33 (15%)	0.001
			380	223	Six-month GOSE	2_or_3	112 (29%)	62 (28%)	0.001
			380	223	Six-month GOSE	4	44 (12%)	20 (9%)	0.001
			380	223	Six-month GOSE	5	49 (13%)	56 (25%)	0.001
			380	223	Six-month GOSE	6	37 (10%)	22 (10%)	0.001
			380	223	Six-month GOSE	7	30 (8%)	11 (5%)	0.001
			380	223	Six-month GOSE	8	19 (5%)	19 (9%)	0.001
			380	223	Baseline functional prognosis	Pr(GOSE>1)	82.5 (63.8–93.4)	90.1 (73.2–96.4)	0.000
			380	223	Baseline functional prognosis	Pr(GOSE>3)	51.4 (29.3–72.4)	60.0 (38.9–78.4)	0.000
			380	223	Baseline functional prognosis	Pr(GOSE>4)	37.3 (19.3–55.1)	43.9 (28.1–63.5)	0.000
			380	223	Baseline functional prognosis	Pr(GOSE>5)	19.6 (9.8–33.2)	23.7 (13.7–38.4)	0.004
			380	223	Baseline functional prognosis	Pr(GOSE>6)	11.4 (5.6–18.3)	13.3 (7.9–21.6)	0.004

Validation population	Day in ICU	Variable	Nonmissing count	Missing count	Characteristic	Value	Nonmissing group	Missing group	p-value†
			380	223	Baseline functional prognosis	Pr(GOSE>7)	4.4 (2.2–8.2)	5.8 (3.2–10.4)	0.005
			433	259	TILmax		12.0 (9.0–16.0)	8.0 (5.0–12.0)	0.000
			433	259	TILmedian		7.0 (5.0–11.0)	4.0 (2.0–6.0)	0.000
			426	253	TIL24		6.0 (4.0–11.0)	2.0 (1.0–4.0)	0.000
TIL-ICPEH	Day 7	Physician concerns of ICP/ CPP	483	209	Centre distribution*		41	38	0.000
			483	209	TILmedian		6.0 (4.0–10.0)	5.0 (3.0–8.0)	0.013
			483	196	TIL24		5.0 (2.0–9.0)	4.0 (2.0–7.0)	0.022
TIL-ICPHR	Day 1	TIL24	256	3	Centre distribution*		21	2	0.006
			256	3	TILmax		10.0 (6.0–14.0)	6.0 (5.5–7.0)	0.023
TIL-ICPHR	Day 1	ICP/ CPP	21	238	Centre distribution*		5	21	0.000
			21	238	Age		64.0 (51.0–70.0)	46.5 (30.0–61.0)	0.008
			20	213	Baseline functional prognosis	Pr(GOSE>3)	34.4 (24.8–49.7)	54.2 (35.8–72.5)	0.009
			20	213	Baseline functional prognosis	Pr(GOSE>4)	25.5 (14.1–37.5)	39.8 (23.2–55.1)	0.008
			20	213	Baseline functional prognosis	Pr(GOSE>5)	13.3 (6.9–22.2)	19.6 (10.6–31.5)	0.011
TIL-ICPHR	Day 1	Physician concerns of ICP/ CPP	192	67	Centre distribution*		17	13	0.000
			174	59	Baseline functional prognosis	Pr(GOSE>6)	10.1 (5.2–16.4)	13.7 (8.7–21.5)	0.007
			174	59	Baseline functional prognosis	Pr(GOSE>7)	4.4 (2.0–7.8)	7.4 (3.3–12.0)	0.001
TIL-ICPHR	Day 2	ICP/ CPP	168	89	Centre distribution*		19	19	0.000
			168	89	Age		51.0 (32.0–64.0)	43.0 (27.0–60.0)	0.018
			167	89	TIL24		6.0 (4.0–9.0)	6.0 (5.0–11.0)	0.048
TIL-ICPHR	Day 2	Physician concerns of ICP/ CPP	209	48	Centre distribution*		16	16	0.000
			191	40	Baseline functional prognosis	Pr(GOSE>6)	10.5 (5.6–16.7)	13.5 (7.3–22.2)	0.045
			191	40	Baseline functional prognosis	Pr(GOSE>7)	4.8 (2.2–8.2)	6.4 (3.1–12.7)	0.043
			209	48	TILmax		10.0 (6.0–15.0)	9.0 (5.8–11.0)	0.017
			209	47	TIL24		6.0 (5.0–10.0)	5.0 (3.0–8.5)	0.003
TIL-ICPHR	Day 3	TIL24	226	5	Six-month GOSE	1	47 (21%)	5 (100%)	0.007
			226		Six-month GOSE	2_or_3	63 (28%)		0.007
			226		Six-month GOSE	4	22 (10%)		0.007
			226		Six-month GOSE	5	44 (19%)		0.007
			226		Six-month GOSE	6	23 (10%)		0.007
			226		Six-month GOSE	7	14 (6%)		0.007
			226		Six-month GOSE	8	13 (6%)		0.007
			226	5	Baseline functional prognosis	Pr(GOSE>3)	53.7 (35.2–72.2)	33.2 (12.4–39.6)	0.040
			226	5	Baseline functional prognosis	Pr(GOSE>4)	38.9 (23.3–55.0)	25.2 (7.9–29.9)	0.022
			226	5	Baseline functional prognosis	Pr(GOSE>5)	19.6 (10.7–31.0)	12.9 (4.6–18.9)	0.029
			226	5	Baseline functional prognosis	Pr(GOSE>6)	11.7 (6.0–17.5)	7.1 (3.5–8.3)	0.017
			226	5	Baseline functional prognosis	Pr(GOSE>7)	5.5 (2.3–8.6)	3.8 (1.2–4.4)	0.009
			251	5	TILmedian		5.0 (3.2–10.0)	9.0 (8.5–9.5)	0.018
TIL-ICPHR	Day 3	ICP/ CPP	242	14	Sex	F	47 (19%)	7 (50%)	0.017
			237	14	TIL24		6.0 (4.0–9.0)	3.0 (2.2–6.5)	0.024
TIL-ICPHR	Day 3	Physician concerns of ICP/ CPP	203	53	Centre distribution*		17	16	0.000
			185	46	Baseline functional prognosis	Pr(GOSE>6)	10.3 (5.5–16.5)	13.6 (7.9–23.6)	0.017
			185	46	Baseline functional prognosis	Pr(GOSE>7)	4.6 (2.2–8.1)	6.8 (3.7–13.0)	0.015
TIL-ICPHR	Day 4	TIL24	219	5	Baseline functional prognosis	Pr(GOSE>3)	53.9 (35.7–72.4)	26.9 (12.4–33.2)	0.008
			219	5	Baseline functional prognosis	Pr(GOSE>4)	39.2 (24.4–55.0)	18.5 (7.9–25.2)	0.008
			219	5	Baseline functional prognosis	Pr(GOSE>5)	20.2 (11.7–31.2)	7.6 (4.6–12.9)	0.007
			219	5	Baseline functional prognosis	Pr(GOSE>6)	11.9 (6.1–17.6)	3.5 (3.5–8.3)	0.012
			219	5	Baseline functional prognosis	Pr(GOSE>7)	5.6 (2.5–8.7)	1.2 (0.8–4.4)	0.006
TIL-ICPHR	Day 4	ICP/ CPP	221	28	Centre distribution*		21	13	0.016
			221	28	Sex	F	41 (19%)	11 (39%)	0.022
			199	25	Six-month GOSE	1	41 (21%)	5 (20%)	0.043

Validation population	Day in ICU	Variable	Nonmissing count	Missing count	Characteristic	Value	Nonmissing group	Missing group	p-value†
			199	25	Six-month GOSE	2_or_3	57 (29%)	6 (24%)	0.043
			199		Six-month GOSE	4	22 (11%)		0.043
			199	25	Six-month GOSE	5	38 (19%)	5 (20%)	0.043
			199	25	Six-month GOSE	6	21 (11%)	2 (8%)	0.043
			199	25	Six-month GOSE	7	12 (6%)	2 (8%)	0.043
			199	25	Six-month GOSE	8	8 (4%)	5 (20%)	0.043
			221	28	TILmax		10.0 (7.0–14.0)	5.0 (4.0–8.2)	0.009
			221	28	TILmedian		6.0 (4.0–10.0)	2.0 (1.0–4.2)	0.001
			217	27	TIL24		6.0 (4.0–10.0)	2.0 (0.5–5.0)	0.020
TIL-ICPHR	Day 4	Physician concerns of ICP/ICP	195	54	Centre distribution*		17	14	0.000
TIL-ICPHR	Day 5	TIL24	215	6	Six-month GOSE	1	41 (19%)	5 (83%)	0.020
			215	6	Six-month GOSE	2_or_3	61 (28%)	1 (17%)	0.020
			215		Six-month GOSE	4	22 (10%)		0.020
			215		Six-month GOSE	5	43 (20%)		0.020
			215		Six-month GOSE	6	23 (11%)		0.020
			215		Six-month GOSE	7	14 (7%)		0.020
			215		Six-month GOSE	8	11 (5%)		0.020
			215	6	Baseline functional prognosis	Pr(GOSE>3)	53.9 (35.7–72.4)	19.7 (9.5–31.6)	0.003
			215	6	Baseline functional prognosis	Pr(GOSE>4)	39.2 (24.8–55.0)	13.2 (5.6–23.6)	0.002
			215	6	Baseline functional prognosis	Pr(GOSE>5)	20.2 (11.7–31.2)	6.1 (2.8–11.6)	0.002
			215	6	Baseline functional prognosis	Pr(GOSE>6)	11.9 (6.1–17.6)	3.5 (2.1–7.1)	0.003
			215	6	Baseline functional prognosis	Pr(GOSE>7)	5.6 (2.5–8.7)	1.0 (0.5–3.6)	0.001
TIL-ICPHR	Day 5	ICP/ICP	193	53	Centre distribution*		20	17	0.001
			193	53	TILmax		11.0 (7.0–15.0)	7.0 (5.0–9.0)	0.000
			193	53	TILmedian		6.0 (4.0–10.0)	3.0 (2.0–5.0)	0.000
			188	51	TIL24		6.0 (3.8–11.0)	3.0 (1.0–4.0)	0.000
TIL-ICPHR	Day 5	Physician concerns of ICP/ICP	191	55	Centre distribution*		17	14	0.000
TIL-ICPHR	Day 6	TIL24	204	4	Baseline functional prognosis	Pr(GOSE>3)	53.3 (35.7–70.8)	17.8 (6.7–30.1)	0.032
			204	4	Baseline functional prognosis	Pr(GOSE>4)	38.9 (24.9–54.6)	11.7 (3.9–21.4)	0.028
			204	4	Baseline functional prognosis	Pr(GOSE>5)	19.6 (11.8–29.9)	4.9 (1.8–10.6)	0.033
			204	4	Baseline functional prognosis	Pr(GOSE>6)	11.5 (6.1–16.8)	2.6 (1.2–5.7)	0.042
			204	4	Baseline functional prognosis	Pr(GOSE>7)	5.4 (2.5–8.4)	0.6 (0.4–1.7)	0.012
TIL-ICPHR	Day 6	ICP/ICP	170	63	Centre distribution*		20	15	0.000
			170	63	Refractory intracranial hypertension		35 (21%)	5 (8%)	0.038
			170	63	TILmax		11.0 (8.0–16.0)	7.0 (5.0–10.0)	0.000
			170	63	TILmedian		6.5 (4.0–10.0)	4.0 (3.0–6.0)	0.000
			168	60	TIL24		6.0 (4.0–10.0)	3.0 (1.0–6.0)	0.000
TIL-ICPHR	Day 6	Physician concerns of ICP/ICP	183	50	Centre distribution*		17	16	0.000
TIL-ICPHR	Day 7	ICP/ICP	130	96	Centre distribution*		20	18	0.013
			130	96	Refractory intracranial hypertension		28 (22%)	10 (10%)	0.042
			117	85	Baseline functional prognosis	Pr(GOSE>1)	82.5 (63.8–94.0)	85.9 (70.3–94.0)	0.042
			130	96	TILmax		12.0 (8.0–16.0)	8.0 (5.0–11.0)	0.000
			130	96	TILmedian		7.0 (4.1–11.0)	4.5 (3.0–8.0)	0.000
			128	93	TIL24		6.0 (4.0–10.0)	3.0 (1.0–6.0)	0.000
TIL-ICPHR	Day 7	Physician concerns of ICP/ICP	171	55	Centre distribution*		17	16	0.000

Abbreviations: Baseline GCS=Glasgow Coma Scale at ICU admission, from 3 to 15, GOS=Glasgow Outcome Scale, ICP=intracranial pressure, ICP_{EH}=end-hour ICP, ICP_{HR}=high-resolution ICP, Marshall CT=Marshall computerised tomography classification, Pr(GOSE>•)="probability of GOSE greater than • at six months post-injury" as previously calculated from the first 24 hours of admission,²⁷ TIL=Therapy Intensity Level scale, TIL₂₄=TIL score of calendar day in ICU, TIL_{max}=maximum TIL₂₄ over first week of ICU

stay, TIL_{median} =median TIL_{24} over first week of ICU stay. Data are median (IQR) for numeric characteristics and n (% of column group) for categorical characteristics, unless otherwise indicated.

*The values for centre distribution represent the number of unique centres for the non-missing value and missing value cohorts, respectively. For statistical testing, centre affiliation was treated as a categorical variable with 52 possible values.

† p -values, comparing patients in non-missing value group to those in the missing value group, are derived from with Welch's t -test for numeric variables and χ^2 contingency table test for categorical variables.

Supplementary Table S2. Study population representation of each TIL item and sub-item.

ICP-treatment modality	Item	TIL validation population		
	Sub-item	Overall (n=873, 52 centres)	TIL-ICP _{EH} (n=832, 51 centres)	TIL-ICP _{HR} (n=255, 21 centres)
Positioning	Head elevation for ICP control or nursed flat (180°) for CPP management*	827 (94.7%)	793 (95.3%)	245 (96.1%)
Sedation and neuromuscular blockade	Sedation*	851 (97.5%)	819 (98.4%)	253 (99.2%)
	Low dose sedation (as required for mechanical ventilation)	592 (67.8%)	579 (69.6%)	198 (77.6%)
	Higher dose sedation for ICP control (but not aiming for burst suppression)	479 (54.9%)	464 (55.8%)	148 (58.0%)
	High dose propofol or barbiturates for ICP control (metabolic suppression)	309 (35.4%)	291 (35.0%)	64 (25.1%)
	Neuromuscular blockade (paralysis)*	305 (34.9%)	291 (35.0%)	78 (30.6%)
CSF drainage	CSF drainage volume*	273 (31.3%)	256 (30.8%)	66 (25.9%)
	Low (<120 ml/day)	208 (23.8%)	197 (23.7%)	50 (19.6%)
	High (≥120 ml/day)	186 (21.3%)	174 (20.9%)	44 (17.3%)
CPP management	Fluid loading for maintenance of cerebral perfusion*	517 (59.2%)	503 (60.5%)	172 (67.5%)
	Vasopressor therapy required for management of cerebral perfusion*	738 (84.5%)	716 (86.1%)	220 (86.3%)
Ventilatory management	Hypocapnia for ICP control (P _a CO ₂ in mmHg)*	561 (64.3%)	540 (64.9%)	191 (74.9%)
	Mild (35≤P _a CO ₂ <40)	496 (56.8%)	478 (57.5%)	177 (69.4%)
	Moderate (30≤P _a CO ₂ <35)	214 (24.5%)	208 (25.0%)	74 (29.0%)
	Intensive (P _a CO ₂ <30)	57 (6.5%)	57 (6.9%)	17 (6.7%)
Hyperosmolar therapy	Mannitol*	238 (27.3%)	232 (27.9%)	69 (27.1%)
	≤2g/kg/24h	224 (25.7%)	218 (26.2%)	67 (26.3%)
	>2g/kg/24h	43 (4.9%)	42 (5.0%)	5 (2.0%)
	Hypertonic saline*	350 (40.1%)	341 (41.0%)	113 (44.3%)
	≤0.3g/kg/24h	312 (35.7%)	306 (36.8%)	105 (41.2%)
>0.3g/kg/24h	115 (13.2%)	111 (13.3%)	35 (13.7%)	
Temperature control	Temperature control*	575 (65.9%)	555 (66.7%)	190 (74.5%)
	Fever control (>38 or spontaneous <34.5)	484 (55.4%)	465 (55.9%)	163 (63.9%)
	Cooling for ICP control (≥35)	128 (14.7%)	125 (15.0%)	50 (19.6%)
	Hypothermia (<35)	94 (10.8%)	93 (11.2%)	22 (8.6%)
Surgery for intracranial hypertension	Intracranial operation for progressive mass lesion, NOT scheduled on admission*	147 (16.8%)	144 (17.3%)	52 (20.4%)
	Decompressive craniectomy*	196 (22.5%)	189 (22.7%)	56 (22.0%)

Abbreviations: CPP=cerebral perfusion pressure, CSF=cerebrospinal fluid, ICP=intracranial pressure, ICP_{EH}=end-hour ICP, ICP_{HR}=high-resolution ICP, P_aCO₂=partial pressure of carbon dioxide in arterial blood, PILOT=Paediatric Intensity Level of Therapy scale,⁷ T=body temperature

in degrees Celsius, TIL=Therapy Intensity Level scale,^{8,9} TIL⁽¹⁹⁸⁷⁾=original Therapy Intensity Level scale published in 1987,⁶ TIL^(Basic)=condensed TIL scale,⁸ uwTIL=unweighted TIL scale in which sub-item scores are replaced by the ascending rank index within the item.

Data are number of unique patients (% of column population) who received the item or sub-item therapy during the first week of their ICU stays.

*Data in these rows represent the number of unique patients (% of column population) who received any of the sub-item therapies for a given item during the first week of their ICU stays.

Supplementary Table S3. Performance of refractory intracranial hypertension status detection at each threshold of TIL_{max}, TIL_{median}, TIL^(Basic)_{max}, and TIL^(Basic)_{median}.

Scale summary metric	Threshold (≥)	Sensitivity (%)	Specificity (%)	Youden's J (%)
TIL _{max}	0	100 (100–100)	0 (0–0)	0 (0–0)
	1	100 (99–100)	0 (0–1)	0 (-1–1)
	2	99 (98–100)	1 (0–1)	-0 (-2–1)
	3	99 (98–100)	3 (2–4)	2 (0–4)
	4	99 (98–100)	8 (6–9)	7 (4–9)
	5	98 (97–100)	15 (13–17)	13 (10–16)
	6	96 (94–98)	23 (20–25)	19 (15–22)
	7	94 (92–98)	31 (28–33)	25 (21–29)
	8	94 (91–97)	39 (36–42)	33 (29–37)
	9	91 (88–95)	45 (42–48)	36 (32–40)
	10	88 (84–92)	53 (50–56)	41 (36–46)
	11	83 (78–87)	61 (58–64)	43 (38–49)
	12	77 (72–82)	67 (64–70)	43 (38–49)
	13	73 (68–78)	73 (71–76)	46 (41–53)
	14	68 (62–74)	79 (77–81)	47 (41–53)
	15	64 (58–70)	83 (81–85)	47 (40–53)
	16	56 (50–62)	86 (84–88)	42 (36–48)
	17	50 (44–56)	90 (88–91)	39 (33–46)
	18	44 (38–50)	93 (91–94)	37 (31–43)
	19	38 (32–44)	94 (93–96)	32 (26–38)
	20	32 (27–38)	96 (95–97)	29 (23–34)
	21	27 (22–33)	97 (96–98)	24 (19–30)
	22	24 (19–29)	98 (97–99)	22 (17–27)
	23	21 (16–26)	98 (98–99)	19 (14–24)
	24	14 (10–18)	99 (98–99)	13 (9–17)
	25	10 (6–14)	99 (99–100)	9 (6–13)
	26	7 (4–10)	100 (99–100)	6 (3–9)
	27	5 (2–7)	100 (100–100)	4 (2–7)
	28	3 (1–4)	100 (100–100)	3 (1–4)
	29	2 (0–3)	100 (100–100)	2 (0–3)
	30	1 (0–2)	100 (100–100)	1 (0–2)
31	1 (0–1)	100 (100–100)	1 (0–1)	
TIL _{median}	0	100 (100–100)	0 (0–0)	0 (0–0)
	0.5	99 (98–100)	4 (3–5)	4 (2–5)
	1	99 (98–100)	5 (3–6)	4 (2–5)
	1.5	98 (97–100)	10 (8–11)	8 (5–10)
	2	98 (97–100)	10 (8–12)	8 (6–11)
	2.5	97 (95–99)	18 (16–20)	15 (12–18)
	3	97 (95–99)	18 (16–21)	15 (12–18)
	3.5	95 (93–98)	32 (29–34)	27 (24–31)

Scale summary metric	Threshold (\geq)	Sensitivity (%)	Specificity (%)	Youden's J (%)
	4	95 (93–98)	32 (30–35)	28 (24–32)
	4.5	92 (89–96)	45 (42–48)	37 (33–42)
	5	92 (89–95)	45 (42–48)	37 (33–42)
	5.5	88 (84–92)	59 (56–62)	47 (42–52)
	6	88 (84–92)	59 (56–62)	47 (43–52)
	6.5	84 (81–88)	68 (66–69)	52 (49–56)
	7	84 (80–89)	67 (65–70)	52 (46–57)
	7.5	81 (77–87)	72 (70–75)	54 (48–60)
	8	81 (76–86)	72 (70–75)	53 (47–59)
	8.5	73 (68–79)	79 (77–80)	52 (47–58)
	9	73 (68–79)	78 (76–81)	52 (46–58)
	9.5	65 (58–72)	82 (81–84)	48 (41–55)
	10	65 (59–71)	82 (80–85)	47 (41–54)
	10.5	59 (53–65)	87 (85–89)	46 (40–53)
	11	59 (53–65)	87 (86–89)	47 (40–53)
	11.5	52 (46–57)	91 (90–93)	43 (36–48)
	12	52 (46–58)	91 (90–93)	43 (36–49)
	12.5	44 (38–50)	94 (93–96)	38 (31–44)
	13	43 (37–49)	94 (93–96)	37 (31–43)
	13.5	36 (30–41)	96 (95–97)	32 (25–37)
	14	35 (29–40)	96 (95–97)	31 (25–36)
	14.5	31 (26–37)	97 (96–98)	28 (23–34)
	15	31 (25–36)	97 (96–98)	28 (22–34)
	15.5	24 (19–29)	98 (98–99)	22 (17–27)
	16	23 (18–28)	98 (98–99)	22 (16–27)
	16.5	20 (15–23)	99 (99–100)	19 (15–23)
	17	19 (14–24)	99 (99–100)	18 (14–23)
	17.5	13 (9–18)	100 (99–100)	13 (9–17)
	18	13 (9–18)	100 (100–100)	13 (9–17)
	18.5	9 (7–11)	100 (100–100)	9 (7–11)
	19	8 (4–11)	100 (100–100)	7 (4–11)
	19.5	7 (6–9)	100 (100–100)	7 (6–9)
	20	6 (3–8)	100 (100–100)	6 (3–8)
	20.5	6 (2–8)	100 (100–100)	5 (2–8)
	21	5 (1–7)	100 (100–100)	5 (1–7)
	21.5	6 (6–6)	100 (100–100)	6 (6–6)
	22	5 (2–7)	100 (100–100)	5 (2–7)
	22.5	3 (1–5)	100 (100–100)	3 (1–4)
	23	3 (1–5)	100 (100–100)	3 (1–5)
	24	1 (0–2)	100 (100–100)	1 (0–2)
	25	0 (0–0)	100 (100–100)	0 (0–0)
	27	1 (1–1)	100 (100–100)	1 (1–1)

Scale summary metric	Threshold (\geq)	Sensitivity (%)	Specificity (%)	Youden's J (%)
	28	0 (0–0)	100 (100–100)	0 (0–0)
TIL ^(Basic) _{max}	0	100 (100–100)	0 (0–0)	0 (0–0)
	1	100 (99–100)	0 (0–1)	0 (-1–1)
	2	99 (98–100)	3 (2–4)	2 (0–3)
	3	94 (91–97)	32 (29–35)	26 (22–30)
	4	85 (81–89)	49 (45–52)	33 (28–39)
	5	0 (0–0)	100 (100–100)	0 (0–0)
TIL ^(Basic) _{median}	0	100 (100–100)	0 (0–0)	0 (0–0)
	0.5	99 (98–100)	5 (4–6)	5 (3–6)
	1	99 (98–100)	6 (4–7)	5 (3–7)
	1.5	98 (97–100)	16 (14–18)	15 (12–17)
	2	98 (97–100)	18 (15–20)	16 (13–18)
	2.5	80 (75–85)	67 (64–69)	47 (41–52)
	3	79 (74–84)	67 (65–70)	46 (41–52)
	3.5	67 (61–72)	81 (79–84)	48 (42–54)
	4	65 (60–71)	81 (79–84)	47 (41–52)
	5	0 (0–0)	100 (100–100)	0 (0–0)

Abbreviations: ICP=intracranial pressure, ICU=intensive care unit, TIL=Therapy Intensity Level scale,^{8,9} TIL^(Basic)=condensed TIL scale.⁸ The numeric definition of each scale is listed in Table 1, and the calculation of maximum (e.g., TIL_{max}) and median (TIL_{median}) scores is described in the Methods. The 95% confidence intervals of performance metrics were derived from bootstrapping with 1,000 resamples of unique patients over 100 missing value imputations. Refractory intracranial hypertension was defined as recurrent, sustained (i.e., of at least ten minutes) increases of ICP above 20 mmHg despite medical ICP management during ICU stay. This information was recorded by attending physicians in patient discharge summaries. The rows in bold designate the thresholds which maximise Youden's J statistic for each scale summary metric.

Supplementary Table S4. Performance of detecting day of surgical ICP control at each threshold of TIL₂₄.

TIL ₂₄ threshold (≥)	Sensitivity (%)	Specificity (%)	Youden's J (%)
0	100% (100–100%)	0% (0–0%)	0% (0–0%)
1	100% (100–100%)	7% (6–7%)	7% (6–7%)
2	100% (100–100%)	12% (11–13%)	12% (11–13%)
3	100% (100–100%)	21% (19–22%)	21% (19–22%)
4	100% (100–100%)	32% (30–33%)	32% (30–33%)
5	100% (100–100%)	42% (41–44%)	42% (41–44%)
6	97% (95–99%)	53% (51–55%)	50% (47–53%)
7	95% (93–98%)	62% (60–64%)	57% (54–60%)
8	93% (90–96%)	68% (66–70%)	61% (58–64%)
9	87% (83–91%)	74% (72–76%)	61% (57–65%)
10	79% (75–84%)	79% (78–81%)	58% (54–63%)
11	72% (67–76%)	84% (83–86%)	56% (51–61%)
12	66% (61–70%)	88% (86–89%)	53% (49–58%)
13	57% (53–62%)	91% (90–92%)	48% (43–53%)
14	50% (45–55%)	93% (92–94%)	43% (39–48%)
15	43% (39–48%)	95% (94–96%)	38% (33–43%)
16	36% (32–41%)	97% (96–97%)	33% (28–38%)
17	30% (26–35%)	98% (97–98%)	28% (24–32%)
18	24% (20–28%)	98% (98–99%)	22% (18–27%)
19	20% (16–23%)	99% (99–99%)	19% (15–22%)
20	15% (12–18%)	99% (99–100%)	14% (11–17%)
21	12% (9–15%)	100% (100–100%)	12% (9–14%)
22	10% (8–13%)	100% (100–100%)	10% (7–12%)
23	8% (6–10%)	100% (100–100%)	8% (6–10%)
24	6% (4–7%)	100% (100–100%)	6% (4–7%)
25	4% (2–5%)	100% (100–100%)	4% (2–5%)
26	2% (1–3%)	100% (100–100%)	2% (1–3%)
27	1% (1–2%)	100% (100–100%)	1% (1–2%)
28	1% (0–1%)	100% (100–100%)	1% (0–1%)
29	1% (0–1%)	100% (100–100%)	1% (0–1%)
30	1% (0–1%)	100% (100–100%)	1% (0–1%)
31	0% (0–0%)	100% (100–100%)	0% (0–0%)
33	0% (0–0%)	100% (100–100%)	0% (0–0%)

Abbreviations: ICP=intracranial pressure, ICU=intensive care unit, TIL=Therapy Intensity Level scale,^{8,9} TIL_(Basic)=condensed TIL scale.⁸ The numeric definition of TIL is listed in Table 1, and the calculation of daily (e.g., TIL₂₄) scores is described in the Methods. The 95% confidence intervals of performance metrics were derived from bootstrapping with 1,000 resamples of unique patients over 100 missing value imputations. If a decompressive craniectomy was performed as a last resort for refractory intracranial hypertension, each of the days following the operation were also

considered days of surgical ICP control. The row in bold designates the threshold which maximises Youden's J statistic.