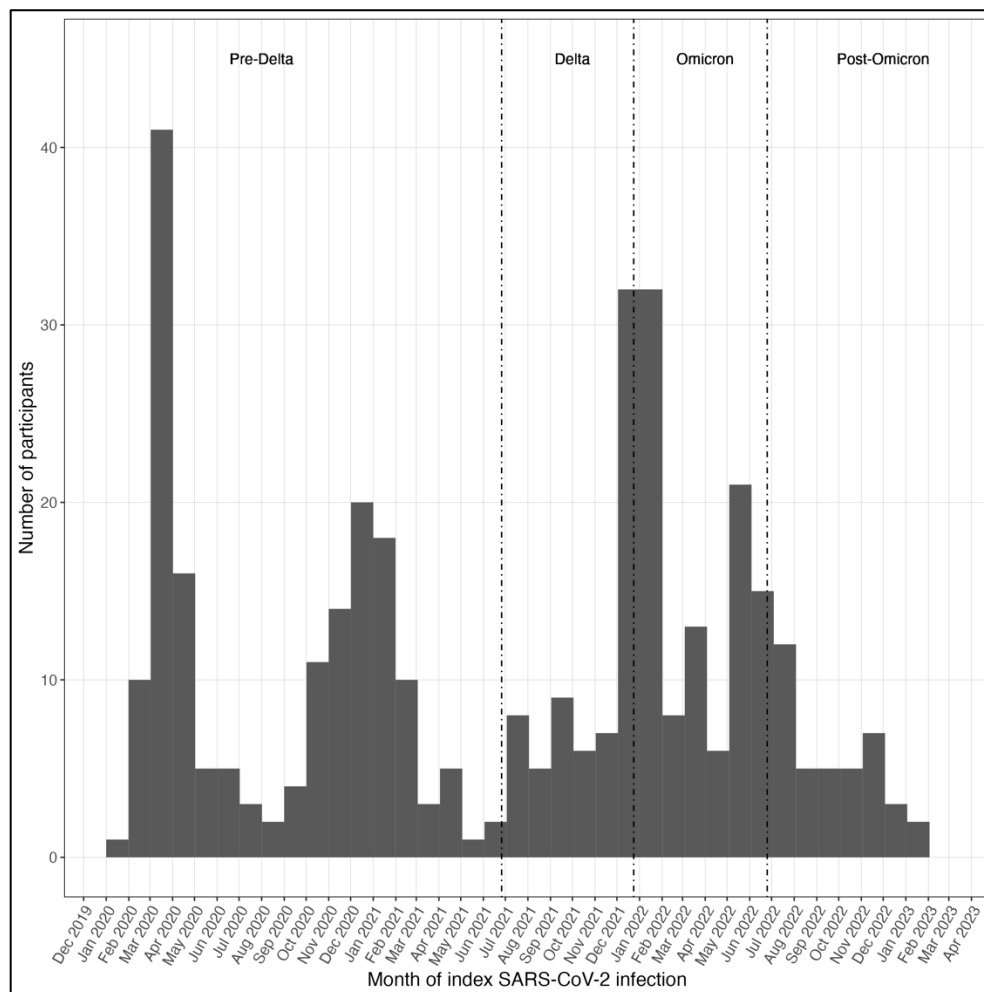


Supplement - Table of Contents

eFigure 1. Distribution of SARS-CoV-2 index infection dates	2
eFigure 2. XGBoost model results for symptoms strongly associated with internal tremors	3
eFigure 3. Comparison between symptoms associated with internal tremors across machine learning methods	4
eTable 1. Pre-pandemic comorbidities	6
eTable 2. Health status by internal tremors status and time of index SARS-CoV-2 infection	10
eTable 3. New-onset conditions.....	11
eTable 4. Long COVID symptoms.....	15
eTable 5. Variable importance in the machine learning models when including all symptom variables.....	22
eMethods 1. Health status and symptom severity questions	25
eMethods 2. Pre-pandemic comorbidities questions	26
eMethods 3. Current conditions questions	28
eMethods 4. Long COVID symptoms questions	30
eMethods 5. RECOVER and LISTEN questions.....	33

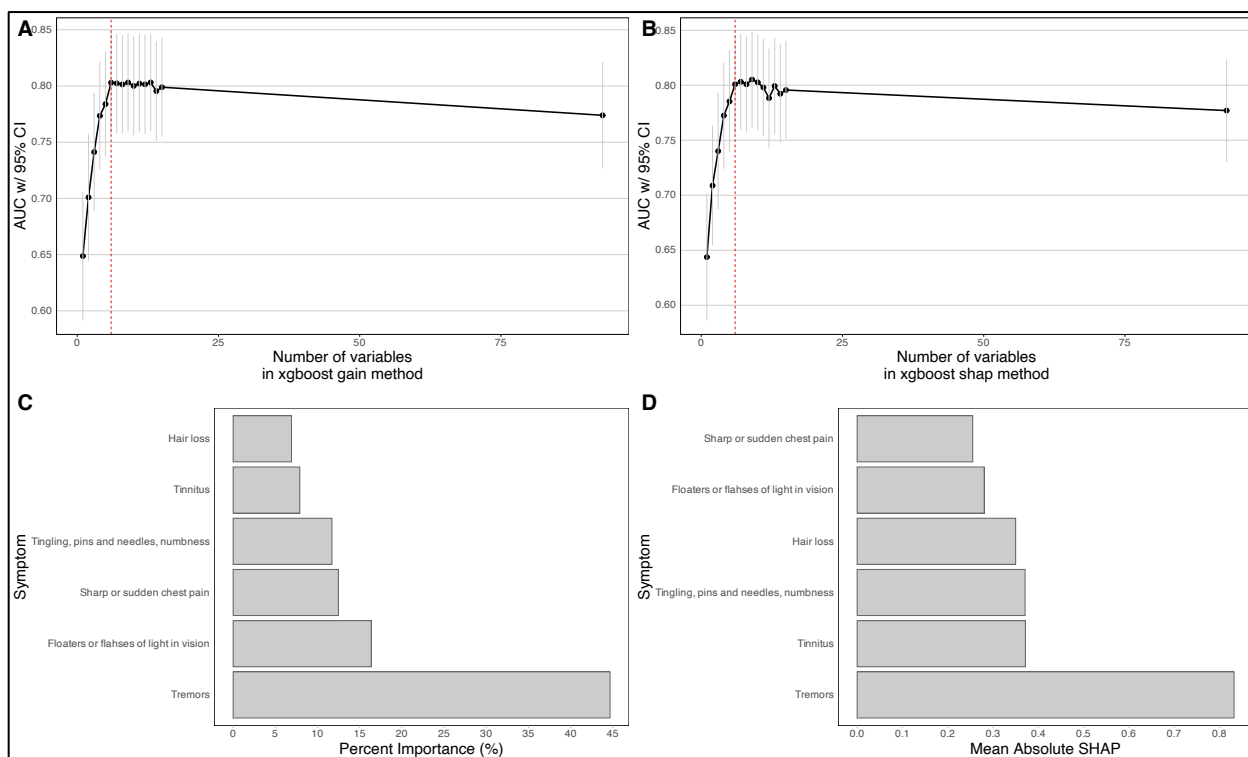
eFigure 1. Distribution of SARS-CoV-2 index infection dates



Self-reported time of index SARS-CoV-2 infection was categorized as Pre-Delta (before 26 June 2021), Delta (26 June 2021–24 December 2021), Omicron (25 December 2021–25 June 2022), and Post-Omicron (after 25 June 2022), consistent with time period definitions associated with dominant variants of SARS-CoV-2.

Reference: Gottlieb M, Wang RC, Yu H, et al. Severe Fatigue and Persistent Symptoms at 3 Months Following Severe Acute Respiratory Syndrome Coronavirus 2 Infections During the Pre-Delta, Delta, and Omicron Time Periods: A Multicenter Prospective Cohort Study. *Clin Infect Dis*. 2023;76(11):1930-1941. doi:10.1093/cid/ciad045

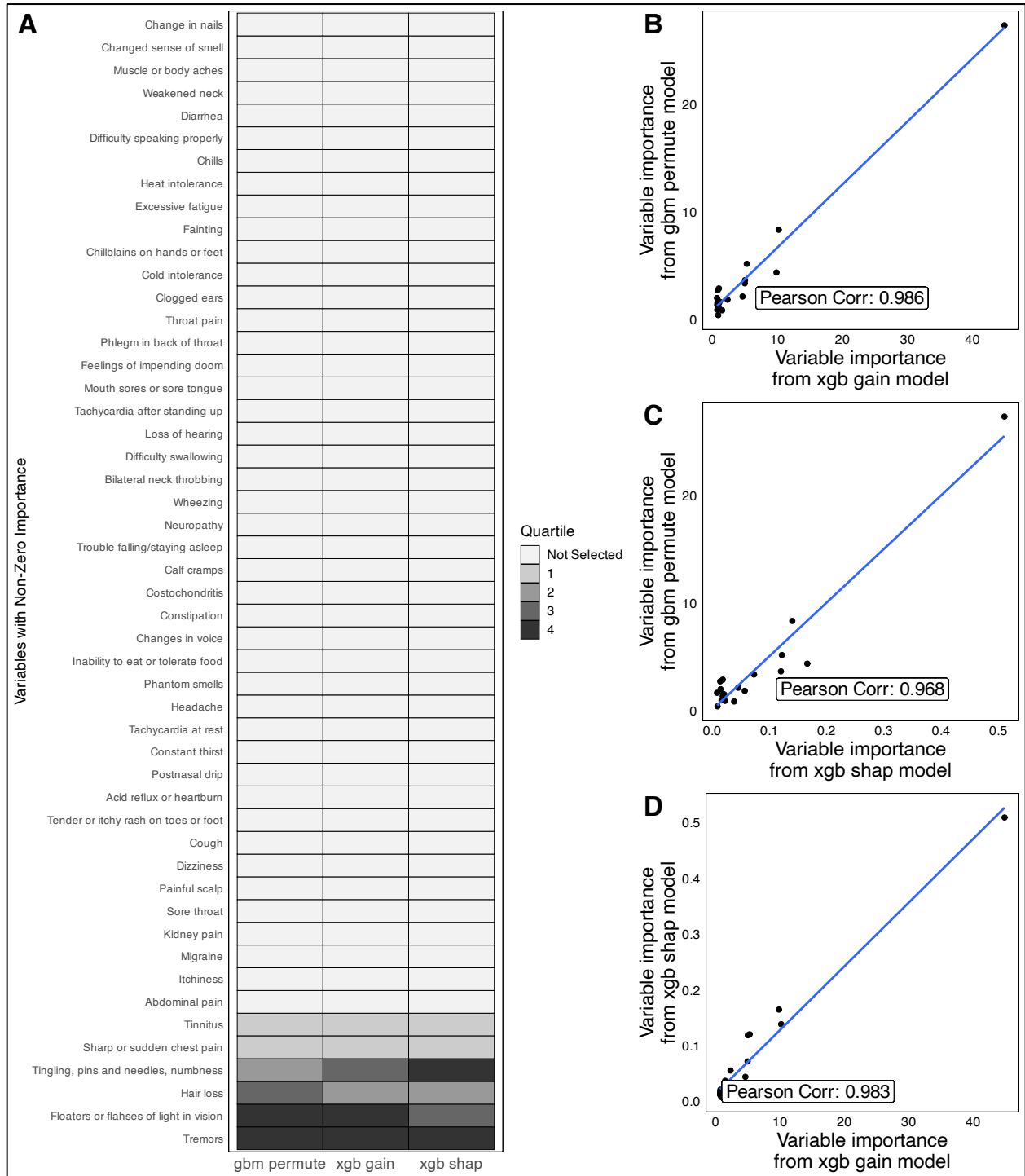
eFigure 2. XGBoost model results for symptoms strongly associated with internal tremors



Abbreviations: AUC, area under the curve; CI, confidence interval; SHAP, Shapley value.

A) Model performance as a function of the number of top variables used in XGBoost model with variable importance computed by relative gain. Red line denotes model with 6 variables selected (AUC = 0.80; 95% CI [0.76, 0.85]). B) Model performance as a function of the number of top variables used in XGBoost model with variable importance computed by mean absolute shapley values. Red line denotes model with 6 variables selected (AUC = 0.80; 95% CI [0.76, 0.85]). C) Symptoms' importance in differentiating internal tremor symptom status for XGBoost gain model selected in panel A. D) Symptoms' importance in differentiating internal tremor symptom status for XGBoost shap model selected in panel B.

eFigure 3. Comparison between symptoms associated with internal tremors across machine learning methods



Abbreviations: gbm permute, gradient-boosting machine using a permutation-based approach; xgb gain, XGBoost tree machine learning model with gain in accuracy metric; xgb shap, XGBoost tree machine learning model with Shapley value.

A) Comparison between the selected final models for each of the three methods. All variables with non-zero importance are shown and for each of the three models, each variable is classified by their quartile rank in the final model or is not selected. The selected variables are highly concordant across models suggesting that the variables selected are truly important in differentiating patients with and without internal tremors.

B, C, D) Correlation between the variable importance metrics for each of the three methods for all variables with non-zero importances. B) Correlation between XGBoost gain and GBM permute is 0.99 with $p < 1.19e-14$. C) Correlation between XGBoost shap and GBM permute is 0.97 with $p < 1.3e-11$. D) Correlation between XGBoost gain and XGBoost shap is 0.98 with $p < 2.2e-16$.

eTable 1. Pre-pandemic comorbidities

	Overall, N = 423	No internal tremors, N = 265	Has internal tremors, N = 158	p- value¹	Adjusted p-value²
	n/N, % [95% CI]	n/N, % [95% CI]	n/N, % [95% CI]		
Any allergies	208/423, 49% [44- 54%]	141/265, 53% [47- 59%]	67/158, 42% [35- 51%]	0.032	>0.999
Arthritis (including rheumatoid arthritis, gout, lupus, or fibromyalgia)	67/423, 16% [13- 20%]	46/265, 17% [13- 23%]	21/158, 13% [8.6- 20%]	0.268	>0.999
Asthma	78/423, 18% [15- 23%]	58/265, 22% [17- 27%]	20/158, 13% [8.1- 19%]	0.018	0.627
Autoimmune disease (including lupus, scleroderma, etc.)	50/423, 12% [9.0- 15%]	35/265, 13% [9.5- 18%]	15/158, 9.5% [5.6- 15%]	0.252	>0.999
Bleeding disorder (including sickle cell disease or thalassemia)	4/423, 0.9% [0.30- 2.6%]	3/265, 1.1% [0.29- 3.5%]	1/158, 0.6% [0.03- 4.0%]	>0.999	>0.999
Blood clots	6/423, 1.4% [0.58- 3.2%]	2/265, 0.8% [0.13- 3.0%]	4/158, 2.5% [0.81- 6.8%]	0.202	>0.999
Cancer or malignancy of any kind	21/423, 5.0% [3.2- 7.6%]	12/265, 4.5% [2.5- 8.0%]	9/158, 5.7% [2.8- 11%]	0.593	>0.999
Cerebrovascular conditions affecting blood vessels to or in the brain (including stroke)	3/423, 0.7% [0.18- 2.2%]	3/265, 1.1% [0.29- 3.5%]	0/158, 0% [0.00- 3.0%]	0.296	>0.999
Chronic lung disease (emphysema, chronic bronchitis, chronic obstructive pulmonary disease)	10/423, 2.4% [1.2- 4.4%]	6/265, 2.3% [0.92- 5.1%]	4/158, 2.5% [0.81- 6.8%]	>0.999	>0.999
Diabetes	11/423, 2.6%	7/265, 2.6%	4/158, 2.5%	>0.999	>0.999

	[1.4-4.7%]	[1.2-5.6%]	[0.81-6.8%]		
Ehlers Danlos Syndrome (hypermobility joints)	8/423, 1.9% [0.88-3.8%]	4/265, 1.5% [0.48-4.1%]	4/158, 2.5% [0.81-6.8%]	0.479	>0.999
Gastrointestinal issues (including IBS or acid reflux)	103/423, 24% [20-29%]	67/265, 25% [20-31%]	36/158, 23% [17-30%]	0.563	>0.999
Heart attack, also called myocardial infarction	3/423, 0.7% [0.18-2.2%]	2/265, 0.8% [0.13-3.0%]	1/158, 0.6% [0.03-4.0%]	>0.999	>0.999
Heart conditions (including coronary artery disease or cardiomyopathies)	12/423, 2.8% [1.5-5.0%]	7/265, 2.6% [1.2-5.6%]	5/158, 3.2% [1.2-7.6%]	0.768	>0.999
High cholesterol	59/423, 14% [11-18%]	42/265, 16% [12-21%]	17/158, 11% [6.6-17%]	0.144	>0.999
Hypertension or high blood pressure	50/423, 12% [9.0-15%]	34/265, 13% [9.2-18%]	16/158, 10% [6.1-16%]	0.405	>0.999
Immunocompromised state	13/423, 3.1% [1.7-5.3%]	12/265, 4.5% [2.5-8.0%]	1/158, 0.6% [0.03-4.0%]	0.037	>0.999
Kidney disease	5/423, 1.2% [0.44-2.9%]	4/265, 1.5% [0.48-4.1%]	1/158, 0.6% [0.03-4.0%]	0.655	>0.999
Liver disease	3/423, 0.7% [0.18-2.2%]	2/265, 0.8% [0.13-3.0%]	1/158, 0.6% [0.03-4.0%]	>0.999	>0.999
Lyme disease	25/423, 5.9% [3.9-8.7%]	14/265, 5.3% [3.0-8.9%]	11/158, 7.0% [3.7-12%]	0.479	>0.999
MCAS (mast cell activation syndrome) or other mast cell disorders	4/423, 0.9% [0.30-2.6%]	1/265, 0.4% [0.02-2.4%]	3/158, 1.9% [0.49-5.9%]	0.149	>0.999

ME/CFS (myalgic encephalomyelitis/chronic fatigue syndrome)	16/423, 3.8% [2.3-6.2%]	10/265, 3.8% [1.9-7.0%]	6/158, 3.8% [1.6-8.5%]	0.990	>0.999
Migraines	84/423, 20% [16-24%]	50/265, 19% [14-24%]	34/158, 22% [16-29%]	0.509	>0.999
Neurologic conditions (including seizures, dementia, multiple sclerosis, Parkinson's, neuropathy, small fiber neuropathy, etc.)	20/423, 4.7% [3.0-7.3%]	14/265, 5.3% [3.0-8.9%]	6/158, 3.8% [1.6-8.5%]	0.486	>0.999
Postural orthostatic hypotension (POTS) or other dysautonomia	13/423, 3.1% [1.7-5.3%]	5/265, 1.9% [0.70-4.6%]	8/158, 5.1% [2.4-10%]	0.083	>0.999
Spinal disorder(s)	16/423, 3.8% [2.3-6.2%]	10/265, 3.8% [1.9-7.0%]	6/158, 3.8% [1.6-8.5%]	0.990	>0.999
Tremors/Internal vibrations	6/423, 1.4% [0.58-3.2%]	2/265, 0.8% [0.13-3.0%]	4/158, 2.5% [0.81-6.8%]	0.202	>0.999
Depressive disorders	122/423, 29% [25-33%]	84/265, 32% [26-38%]	38/158, 24% [18-32%]	0.093	>0.999
Anxiety disorders	127/423, 30% [26-35%]	83/265, 31% [26-37%]	44/158, 28% [21-36%]	0.451	>0.999
Schizophrenia spectrum and other psychotic disorders	1/423, 0.2% [0.01-1.5%]	1/265, 0.4% [0.02-2.4%]	0/158, 0% [0.00-3.0%]	>0.999	>0.999
Bipolar and related disorders	13/423, 3.1% [1.7-5.3%]	6/265, 2.3% [0.92-5.1%]	7/158, 4.4% [2.0-9.3%]	0.249	>0.999
Obsessive-compulsive and related disorders	15/423, 3.5% [2.1-5.9%]	7/265, 2.6% [1.2-5.6%]	8/158, 5.1% [2.4-10%]	0.193	>0.999

Trauma- and stressor-related disorders	46/423, 11% [8.1- 14%]	27/265, 10% [6.9- 15%]	19/158, 12% [7.6- 18%]	0.557	>0.999
Feeding and eating disorders	20/423, 4.7% [3.0- 7.3%]	13/265, 4.9% [2.7- 8.4%]	7/158, 4.4% [2.0- 9.3%]	0.824	>0.999
Somatic symptoms (excessive thoughts, feelings and behaviors relating to physical symptoms) and related disorders	7/423, 1.7% [0.73- 3.5%]	5/265, 1.9% [0.70- 4.6%]	2/158, 1.3% [0.22- 5.0%]	>0.999	>0.999
¹ Pearson's Chi-squared test; Fisher's exact test					
² Bonferroni correction for multiple testing					
CI, confidence interval; IBS, irritable bowel syndrome; POTS, postural orthostatic tachycardia syndrome					

eTable 2. Health status by internal tremors status and time of index SARS-CoV-2 infection

Excluding n = 50 participants with missing dates of index SARS-CoV-2 infection

Overall, N = 373					
	Pre-Delta, N = 171¹	Delta, N = 48¹	Omicron, N = 110¹	Post- Omicron, N = 44¹	p- value²
Euro-QoL visual analogue scale (0-100)	41 (32, 60)	46 (31, 69)	49 (31, 61)	50 (34, 60)	0.914
No internal tremors, N = 233					
	Pre-Delta, N = 97¹	Delta, N = 27¹	Omicron, N = 72¹	Post- Omicron, N = 37¹	p- value²
Euro-QoL visual analogue scale (0-100)	45 (35, 61)	59 (38, 69)	50 (32, 62)	49 (34, 60)	0.750
Has internal tremors, N = 140					
	Pre-Delta, N = 74¹	Delta, N = 21¹	Omicron, N = 38¹	Post- Omicron, N = 7¹	p- value²
Euro-QoL visual analogue scale (0-100)	40 (30, 60)	35 (31, 55)	41 (30, 58)	55 (35, 60)	0.922
¹ Median (IQR)					
² Kruskal-Wallis rank sum test					

eTable 3. New-onset conditions

	Overall, N = 423	No internal tremors, N = 265	Has internal tremors, N = 158	p- value¹	Adjusted p-value²
	n/N, % [95% CI]	n/N, % [95% CI]	n/N, % [95% CI]		
Any allergies	20/423, 4.7% [3.0- 7.3%]	12/265, 4.5% [2.5- 8.0%]	8/158, 5.1% [2.4- 10%]	0.802	>0.999
Arthritis (including rheumatoid arthritis, gout, lupus, or fibromyalgia)	27/423, 6.4% [4.3- 9.3%]	13/265, 4.9% [2.7- 8.4%]	14/158, 8.9% [5.1- 15%]	0.107	>0.999
Asthma	20/423, 4.7% [3.0- 7.3%]	10/265, 3.8% [1.9- 7.0%]	10/158, 6.3% [3.2- 12%]	0.231	>0.999
Autoimmune disease (including lupus, scleroderma, etc.)	26/423, 6.1% [4.1- 9.0%]	11/265, 4.2% [2.2- 7.5%]	15/158, 9.5% [5.6- 15%]	0.027	0.914
Bleeding disorder (including sickle cell disease or thalassemia)	2/423, 0.5% [0.08- 1.9%]	2/265, 0.8% [0.13- 3.0%]	0/158, 0% [0.00- 3.0%]	0.531	>0.999
Blood clots	14/423, 3.3% [1.9- 5.6%]	5/265, 1.9% [0.70- 4.6%]	9/158, 5.7% [2.8- 11%]	0.034	>0.999
Cancer or malignancy of any kind	6/423, 1.4% [0.58- 3.2%]	4/265, 1.5% [0.48- 4.1%]	2/158, 1.3% [0.22- 5.0%]	>0.999	>0.999
Cerebrovascular conditions affecting blood vessels to or in the brain (including stroke)	7/423, 1.7% [0.73- 3.5%]	3/265, 1.1% [0.29- 3.5%]	4/158, 2.5% [0.81- 6.8%]	0.432	>0.999
Chronic lung disease (emphysema, chronic bronchitis, chronic obstructive pulmonary disease)	14/423, 3.3% [1.9- 5.6%]	8/265, 3.0% [1.4- 6.1%]	6/158, 3.8% [1.6- 8.5%]	0.665	>0.999
Diabetes	7/423, 1.7%	4/265, 1.5%	3/158, 1.9%	0.716	>0.999

	[0.73-3.5%]	[0.48-4.1%]	[0.49-5.9%]		
Ehlers Danlos Syndrome (hypermobile joints)	8/423, 1.9% [0.88-3.8%]	3/265, 1.1% [0.29-3.5%]	5/158, 3.2% [1.2-7.6%]	0.156	>0.999
Gastrointestinal issues (including IBS or acid reflux)	65/423, 15% [12-19%]	30/265, 11% [7.9-16%]	35/158, 22% [16-30%]	0.003	0.095
Heart attack, also called myocardial infarction	1/423, 0.2% [0.01-1.5%]	0/265, 0% [0.00-1.8%]	1/158, 0.6% [0.03-4.0%]	0.374	>0.999
Heart conditions (including coronary artery disease or cardiomyopathies)	29/423, 6.9% [4.7-9.8%]	11/265, 4.2% [2.2-7.5%]	18/158, 11% [7.1-18%]	0.004	0.148
High cholesterol	36/423, 8.5% [6.1-12%]	24/265, 9.1% [6.0-13%]	12/158, 7.6% [4.2-13%]	0.602	>0.999
Hypertension or high blood pressure	29/423, 6.9% [4.7-9.8%]	16/265, 6.0% [3.6-9.8%]	13/158, 8.2% [4.6-14%]	0.389	>0.999
Immunocompromised state	21/423, 5.0% [3.2-7.6%]	10/265, 3.8% [1.9-7.0%]	11/158, 7.0% [3.7-12%]	0.144	>0.999
Kidney disease	5/423, 1.2% [0.44-2.9%]	0/265, 0% [0.00-1.8%]	5/158, 3.2% [1.2-7.6%]	0.007	0.237
Liver disease	4/423, 0.9% [0.30-2.6%]	3/265, 1.1% [0.29-3.5%]	1/158, 0.6% [0.03-4.0%]	>0.999	>0.999
Lyme disease	4/423, 0.9% [0.30-2.6%]	1/265, 0.4% [0.02-2.4%]	3/158, 1.9% [0.49-5.9%]	0.149	>0.999
MCAS (mast cell activation syndrome) or other mast cell disorders	25/423, 5.9% [3.9-8.7%]	7/265, 2.6% [1.2-5.6%]	18/158, 11% [7.1-18%]	<0.001	0.008

ME/CFS (myalgic encephalomyelitis/chronic fatigue syndrome)	62/423, 15% [11-18%]	29/265, 11% [7.6-15%]	33/158, 21% [15-28%]	0.005	0.175
Migraines	43/423, 10% [7.5-14%]	20/265, 7.5% [4.8-12%]	23/158, 15% [9.6-21%]	0.021	0.714
Neurologic conditions (including seizures, dementia, multiple sclerosis, Parkinson's, neuropathy, small fiber neuropathy, etc.)	56/423, 13% [10-17%]	22/265, 8.3% [5.4-12%]	34/158, 22% [16-29%]	<0.001	0.004
Postural orthostatic hypotension (POTS) or other dysautonomia	107/423, 25% [21-30%]	55/265, 21% [16-26%]	52/158, 33% [26-41%]	0.005	0.184
Spinal disorder(s)	9/423, 2.1% [1.0-4.1%]	5/265, 1.9% [0.70-4.6%]	4/158, 2.5% [0.81-6.8%]	0.733	>0.999
Depressive disorders	42/423, 9.9% [7.3-13%]	24/265, 9.1% [6.0-13%]	18/158, 11% [7.1-18%]	0.437	>0.999
Anxiety disorders	54/423, 13% [9.8-16%]	23/265, 8.7% [5.7-13%]	31/158, 20% [14-27%]	0.001	0.038
Schizophrenia spectrum and other psychotic disorders	1/423, 0.2% [0.01-1.5%]	0/265, 0% [0.00-1.8%]	1/158, 0.6% [0.03-4.0%]	0.374	>0.999
Bipolar and related disorders	2/423, 0.5% [0.08-1.9%]	1/265, 0.4% [0.02-2.4%]	1/158, 0.6% [0.03-4.0%]	>0.999	>0.999
Obsessive-compulsive and related disorders	3/423, 0.7% [0.18-2.2%]	1/265, 0.4% [0.02-2.4%]	2/158, 1.3% [0.22-5.0%]	0.559	>0.999
Trauma- and stressor-related disorders	28/423, 6.6% [4.5-9.5%]	9/265, 3.4% [1.7-6.6%]	19/158, 12% [7.6-18%]	<0.001	0.019

Feeding and eating disorders	4/423, 0.9% [0.30- 2.6%]	1/265, 0.4% [0.02- 2.4%]	3/158, 1.9% [0.49- 5.9%]	0.149	>0.999
Somatic symptoms (excessive thoughts, feelings and behaviors relating to physical symptoms) and related disorders	8/423, 1.9% [0.88- 3.8%]	3/265, 1.1% [0.29- 3.5%]	5/158, 3.2% [1.2- 7.6%]	0.156	>0.999
¹ Pearson's Chi-squared test; Fisher's exact test					
² Bonferroni correction for multiple testing					
CI, confidence interval; IBS, irritable bowel syndrome; POTS, postural orthostatic tachycardia syndrome					

eTable 4. Long COVID symptoms

	Overall, N = 423	No internal tremors, N = 265	Has internal tremors, N = 158	p- value¹	Adjusted p-value²
	n/N, % [95% CI]	n/N, % [95% CI]	n/N, % [95% CI]		
Anxiety	185/423, 44% [39- 49%]	97/265, 37% [31- 43%]	88/158, 56% [48- 64%]	<0.001	0.012
Confusion	166/423, 39% [35- 44%]	91/265, 34% [29- 40%]	75/158, 47% [40- 56%]	0.007	0.710
Brain fog; difficulty concentrating or focusing	362/423, 86% [82- 89%]	223/265, 84% [79- 88%]	139/158, 88% [82- 92%]	0.279	>0.999
Feelings of impending doom	105/423, 25% [21- 29%]	50/265, 19% [14- 24%]	55/158, 35% [28- 43%]	<0.001	0.023
Memory problems	297/423, 70% [66- 74%]	175/265, 66% [60- 72%]	122/158, 77% [70- 83%]	0.015	>0.999
Difficulty speaking properly	195/423, 46% [41- 51%]	106/265, 40% [34- 46%]	89/158, 56% [48- 64%]	0.001	0.106
Suicidal thoughts	60/423, 14% [11- 18%]	27/265, 10% [6.9- 15%]	33/158, 21% [15- 28%]	0.002	0.217
Abnormally low temperature	54/423, 13% [9.8- 16%]	20/265, 7.5% [4.8- 12%]	34/158, 22% [16- 29%]	<0.001	0.003
Fevers, including low- grade fevers	80/423, 19% [15- 23%]	40/265, 15% [11- 20%]	40/158, 25% [19- 33%]	0.009	0.893
Chills but no fever	146/423, 35% [30- 39%]	69/265, 26% [21- 32%]	77/158, 49% [41- 57%]	<0.001	<0.001
Heat intolerance	197/423, 47% [42- 51%]	101/265, 38% [32- 44%]	96/158, 61% [53- 68%]	<0.001	<0.001
Cold intolerance	131/423, 31% [27- 36%]	68/265, 26% [21- 31%]	63/158, 40% [32- 48%]	0.002	0.211
Night sweats	175/423, 41% [37- 46%]	89/265, 34% [28- 40%]	86/158, 54% [46- 62%]	<0.001	0.002

Trouble falling or staying asleep	303/423, 72% [67-76%]	171/265, 65% [58-70%]	132/158, 84% [77-89%]	<0.001	0.003
Sleeping more than usual	168/423, 40% [35-45%]	96/265, 36% [30-42%]	72/158, 46% [38-54%]	0.057	>0.999
Nightmares	73/423, 17% [14-21%]	32/265, 12% [8.5-17%]	41/158, 26% [19-34%]	<0.001	0.025
Exercise intolerance	333/423, 79% [74-82%]	199/265, 75% [69-80%]	134/158, 85% [78-90%]	0.018	>0.999
Excessive fatigue	369/423, 87% [84-90%]	227/265, 86% [81-90%]	142/158, 90% [84-94%]	0.209	>0.999
Burning sensations	116/423, 27% [23-32%]	50/265, 19% [14-24%]	66/158, 42% [34-50%]	<0.001	<0.001
Tremors or shakiness	161/423, 38% [33-43%]	59/265, 22% [18-28%]	102/158, 65% [57-72%]	<0.001	<0.001
Tingling, pins and needles, numbness	222/423, 52% [48-57%]	109/265, 41% [35-47%]	113/158, 72% [64-78%]	<0.001	<0.001
Neuropathy (nerve sensations including pain) anywhere in the body	192/423, 45% [41-50%]	91/265, 34% [29-40%]	101/158, 64% [56-71%]	<0.001	<0.001
Seizures	5/423, 1.2% [0.44-2.9%]	3/265, 1.1% [0.29-3.5%]	2/158, 1.3% [0.22-5.0%]	>0.999	>0.999
Abdominal pain	136/423, 32% [28-37%]	61/265, 23% [18-29%]	75/158, 47% [40-56%]	<0.001	<0.001
Acid reflux or heartburn	123/423, 29% [25-34%]	62/265, 23% [19-29%]	61/158, 39% [31-47%]	<0.001	0.082
Diarrhea	132/423, 31% [27-36%]	64/265, 24% [19-30%]	68/158, 43% [35-51%]	<0.001	0.005
Constipation	108/423, 26% [21-30%]	56/265, 21% [16-27%]	52/158, 33% [26-41%]	0.007	0.684

Nausea/vomiting	138/423, 33% [28-37%]	72/265, 27% [22-33%]	66/158, 42% [34-50%]	0.002	0.185
Loss of appetite	129/423, 30% [26-35%]	64/265, 24% [19-30%]	65/158, 41% [33-49%]	<0.001	0.023
Sore throat	129/423, 30% [26-35%]	76/265, 29% [23-35%]	53/158, 34% [26-42%]	0.293	>0.999
Congested or runny nose	134/423, 32% [27-36%]	76/265, 29% [23-35%]	58/158, 37% [29-45%]	0.086	>0.999
Palpitations (improper beating of the heart due to electrical impulse problems)	222/423, 52% [48-57%]	117/265, 44% [38-50%]	105/158, 66% [58-74%]	<0.001	<0.001
Bilateral neck throbbing around lymph nodes	57/423, 13% [10-17%]	20/265, 7.5% [4.8-12%]	37/158, 23% [17-31%]	<0.001	<0.001
Costochondritis (pain in the cartilage that connects a rib to the breastbone)	105/423, 25% [21-29%]	47/265, 18% [13-23%]	58/158, 37% [29-45%]	<0.001	0.001
Cough	116/423, 27% [23-32%]	73/265, 28% [22-33%]	43/158, 27% [21-35%]	0.941	>0.999
Coughing up blood	7/423, 1.7% [0.73-3.5%]	2/265, 0.8% [0.13-3.0%]	5/158, 3.2% [1.2-7.6%]	0.108	>0.999
Cold or burning feeling in lungs	53/423, 13% [9.6-16%]	26/265, 9.8% [6.6-14%]	27/158, 17% [12-24%]	0.029	>0.999
Difficulty swallowing	74/423, 17% [14-22%]	32/265, 12% [8.5-17%]	42/158, 27% [20-34%]	<0.001	0.014
Throat pain or discomfort	95/423, 22% [19-27%]	42/265, 16% [12-21%]	53/158, 34% [26-42%]	<0.001	0.002
Lump in throat	58/423, 14% [11-17%]	24/265, 9.1% [6.0-13%]	34/158, 22% [16-29%]	<0.001	0.030
Phlegm in back of throat	102/423, 24% [20-29%]	54/265, 20% [16-26%]	48/158, 30% [23-38%]	0.020	>0.999

Postnasal drip	97/423, 23% [19- 27%]	56/265, 21% [16- 27%]	41/158, 26% [19- 34%]	0.254	>0.999
Runny nose	74/423, 17% [14- 22%]	40/265, 15% [11- 20%]	34/158, 22% [16- 29%]	0.092	>0.999
Swollen lymph nodes	82/423, 19% [16- 24%]	41/265, 15% [11- 21%]	41/158, 26% [19- 34%]	0.008	0.795
Tachycardia (rapid heartbeat) at rest	179/423, 42% [38- 47%]	89/265, 34% [28- 40%]	90/158, 57% [49- 65%]	<0.001	<0.001
Tachycardia (rapid heartbeat) after standing up	194/423, 46% [41- 51%]	103/265, 39% [33- 45%]	91/158, 58% [49- 65%]	<0.001	0.018
Wheezing	46/423, 11% [8.1- 14%]	21/265, 7.9% [5.1- 12%]	25/158, 16% [11- 23%]	0.012	>0.999
Shortness of breath or difficulty breathing	246/423, 58% [53- 63%]	143/265, 54% [48- 60%]	103/158, 65% [57- 72%]	0.024	>0.999
Bone aches	138/423, 33% [28- 37%]	65/265, 25% [20- 30%]	73/158, 46% [38- 54%]	<0.001	<0.001
Migraine	129/423, 30% [26- 35%]	62/265, 23% [19- 29%]	67/158, 42% [35- 51%]	<0.001	0.004
Headache	271/423, 64% [59- 69%]	149/265, 56% [50- 62%]	122/158, 77% [70- 83%]	<0.001	0.001
Calf cramps	114/423, 27% [23- 31%]	54/265, 20% [16- 26%]	60/158, 38% [30- 46%]	<0.001	0.008
Pressure at base of head	151/423, 36% [31- 40%]	71/265, 27% [22- 33%]	80/158, 51% [43- 59%]	<0.001	<0.001
Jaw pain	92/423, 22% [18- 26%]	42/265, 16% [12- 21%]	50/158, 32% [25- 40%]	<0.001	0.013
Joint pain	177/423, 42% [37- 47%]	88/265, 33% [28- 39%]	89/158, 56% [48- 64%]	<0.001	<0.001
Kidney pain	35/423, 8.3% [5.9- 11%]	7/265, 2.6% [1.2- 5.6%]	28/158, 18% [12- 25%]	<0.001	<0.001

Mouth sores or sore tongue	82/423, 19% [16-24%]	38/265, 14% [10-19%]	44/158, 28% [21-36%]	<0.001	0.064
Muscle or body aches	239/423, 57% [52-61%]	129/265, 49% [43-55%]	110/158, 70% [62-77%]	<0.001	0.003
Persistent chest pain or pressure	138/423, 33% [28-37%]	68/265, 26% [21-31%]	70/158, 44% [36-52%]	<0.001	0.007
Painful scalp	63/423, 15% [12-19%]	23/265, 8.7% [5.7-13%]	40/158, 25% [19-33%]	<0.001	<0.001
Sharp or sudden chest pain	131/423, 31% [27-36%]	57/265, 22% [17-27%]	74/158, 47% [39-55%]	<0.001	<0.001
Changed sense of taste	122/423, 29% [25-33%]	66/265, 25% [20-31%]	56/158, 35% [28-43%]	0.021	>0.999
Changed sense of smell	132/423, 31% [27-36%]	66/265, 25% [20-31%]	66/158, 42% [34-50%]	<0.001	0.028
Floaters or flashes of light in vision	117/423, 28% [24-32%]	43/265, 16% [12-21%]	74/158, 47% [39-55%]	<0.001	<0.001
Loss of hearing	37/423, 8.7% [6.3-12%]	14/265, 5.3% [3.0-8.9%]	23/158, 15% [9.6-21%]	0.001	0.104
Loss or decrease in quality of vision/blurry vision	176/423, 42% [37-46%]	90/265, 34% [28-40%]	86/158, 54% [46-62%]	<0.001	0.003
Phantom smells	98/423, 23% [19-28%]	43/265, 16% [12-21%]	55/158, 35% [28-43%]	<0.001	0.001
Phantom tastes	36/423, 8.5% [6.1-12%]	14/265, 5.3% [3.0-8.9%]	22/158, 14% [9.1-21%]	0.002	0.196
Hallucinations (visual or auditory)	26/423, 6.1% [4.1-9.0%]	10/265, 3.8% [1.9-7.0%]	16/158, 10% [6.1-16%]	0.008	0.807
Tinnitus or humming in ears	193/423, 46% [41-51%]	95/265, 36% [30-42%]	98/158, 62% [54-70%]	<0.001	<0.001
Skin bruising	93/423, 22% [18-26%]	42/265, 16% [12-21%]	51/158, 32% [25-40%]	<0.001	0.008

Change in nails (i.e. White spots, brittleness, change in moons)	83/423, 20% [16-24%]	35/265, 13% [9.5-18%]	48/158, 30% [23-38%]	<0.001	0.002
Tender or itchy rash or chilblains on the toes or foot)	29/423, 6.9% [4.7-9.8%]	5/265, 1.9% [0.70-4.6%]	24/158, 15% [10-22%]	<0.001	<0.001
Cracked or dry lips	79/423, 19% [15-23%]	35/265, 13% [9.5-18%]	44/158, 28% [21-36%]	<0.001	0.018
Dental problems (e.g., chipped tooth, tooth loss)	54/423, 13% [9.8-16%]	26/265, 9.8% [6.6-14%]	28/158, 18% [12-25%]	0.018	>0.999
Discoloration of the skin (for example: purple or blue on the hands or feet, no blistering)	74/423, 17% [14-22%]	28/265, 11% [7.3-15%]	46/158, 29% [22-37%]	<0.001	<0.001
Dry or peeling skin	76/423, 18% [14-22%]	35/265, 13% [9.5-18%]	41/158, 26% [19-34%]	<0.001	0.091
Dry scalp or dandruff	61/423, 14% [11-18%]	30/265, 11% [7.9-16%]	31/158, 20% [14-27%]	0.019	>0.999
Hair loss	167/423, 39% [35-44%]	79/265, 30% [24-36%]	88/158, 56% [48-64%]	<0.001	<0.001
Itchiness	108/423, 26% [21-30%]	46/265, 17% [13-23%]	62/158, 39% [32-47%]	<0.001	<0.001
Tender or itchy rash not on foot	44/423, 10% [7.7-14%]	21/265, 7.9% [5.1-12%]	23/158, 15% [9.6-21%]	0.031	>0.999
Chilblains (itching, bumps, red- to violet-colored patches on the hands or feet)	24/423, 5.7% [3.7-8.4%]	6/265, 2.3% [0.92-5.1%]	18/158, 11% [7.1-18%]	<0.001	0.008
Constant thirst	111/423, 26% [22-31%]	46/265, 17% [13-23%]	65/158, 41% [33-49%]	<0.001	<0.001
Changes in voice	81/423, 19% [16-23%]	46/265, 17% [13-23%]	35/158, 22% [16-30%]	0.226	>0.999
Clogged ears	98/423, 23% [19-28%]	49/265, 18% [14-24%]	49/158, 31% [24-39%]	0.003	0.299

Dizziness	249/423, 59% [54- 64%]	131/265, 49% [43- 56%]	118/158, 75% [67- 81%]	<0.001	<0.001
Dry eyes	120/423, 28% [24- 33%]	56/265, 21% [16- 27%]	64/158, 41% [33- 49%]	<0.001	0.002
Fatigue	361/423, 85% [82- 89%]	219/265, 83% [77- 87%]	142/158, 90% [84- 94%]	0.042	>0.999
Irregular or skipped menstrual cycles	78/423, 18% [15- 23%]	38/265, 14% [10- 19%]	40/158, 25% [19- 33%]	0.005	0.462
Menstrual cycles that are heavier or lighter than normal	81/423, 19% [16- 23%]	40/265, 15% [11- 20%]	41/158, 26% [19- 34%]	0.006	0.575
New allergies	68/423, 16% [13- 20%]	32/265, 12% [8.5- 17%]	36/158, 23% [17- 30%]	0.004	0.354
Inability to eat or tolerate food	90/423, 21% [18- 26%]	39/265, 15% [11- 20%]	51/158, 32% [25- 40%]	<0.001	0.002
Swollen hands or feet	78/423, 18% [15- 23%]	36/265, 14% [9.8- 18%]	42/158, 27% [20- 34%]	<0.001	0.081
Fainting	43/423, 10% [7.5- 14%]	13/265, 4.9% [2.7- 8.4%]	30/158, 19% [13- 26%]	<0.001	<0.001
Weakened neck	69/423, 16% [13- 20%]	23/265, 8.7% [5.7- 13%]	46/158, 29% [22- 37%]	<0.001	<0.001
¹ Pearson's Chi-squared test; Fisher's exact test					
² Bonferroni correction for multiple testing					
CI, confidence interval					

eTable 5. Variable importance in the machine learning models when including all symptom variables

Symptom	GBM Percent Importance	XGB Mean Absolute Shapley Value	XGB Gain Percent Importance
Tremors or shakiness	27.45	0.510490907	44.85
Floater or flashes of light in vision	8.44	0.139807497	10.16
Hair loss	5.27	0.121706726	5.26
Tingling, pins and needles, numbness	4.47	0.166079321	9.82
Tinnitus or humming in ears	3.75	0.120033087	4.98
Sharp or sudden chest pain	3.46	0.073050261	4.94
Abdominal pain	2.98	0.018376863	0.97
Itchiness	2.82	0.013954319	0.78
Migraine	2.46	0	0
Kidney pain	2.23	0.04543798	4.6
Sore throat	2.09	0.014627527	0.68
Painful scalp	1.98	0	0
Dizziness	1.94	0.056787718	2.29
Cough	1.79	0	0
Tender or itchy rash on toes or foot	1.76	0.008380492	1.06
Acid reflux or heartburn	1.72	0	0
Postnasal drip	1.68	0	0
Constant thirst	1.65	0.01901079	0.73
Tachycardia at rest	1.6	0.021019243	0.98
Headache	1.45	0.018371266	0.7
Phantom smells	1.34	0	0
Inability to eat or tolerate food	1.27	0	0
Changes in voice	1.2	0	0
Constipation	1.18	0	0
Costochondritis	1.17	0	0
Calf cramps	1.06	0.016288212	1.09
Trouble falling/staying asleep	1.01	0.022355786	0.72
Neuropathy	0.95	0.038334172	1.46
Wheezing	0.85	0	0
Bilateral neck throbbing	0.81	0	0
Difficulty swallowing	0.68	0	0
Loss of hearing	0.66	0	0

Tachycardia after standing up	0.64	0	0
Mouth sores or sore tongue	0.6	0	0
Feelings of impending doom	0.59	0	0
Phlegm in back of throat	0.59	0	0
Throat pain	0.55	0	0
Cold intolerance	0.51	0	0
Clogged ears	0.51	0	0
Chilblains on hands or feet	0.5	0.009202775	0.86
Fainting	0.49	0	0
Excessive fatigue	0.43	0	0
Heat intolerance	0.41	0	0
Chills	0.34	0	0
Difficulty speaking properly	0.33	0	0
Diarrhea	0.31	0	0
Anxiety	0	0	0
Confusion	0	0	0
Brain fog	0	0	0
Memory problems	0	0	0
Suicidal thoughts	0	0	0
Abnormally low temperature	0	0	0
Fevers	0	0	0
Night sweats	0	0	0
Sleeping more than usual	0	0	0
Nightmares	0	0	0
Exercise intolerance	0	0	0
Burning sensations	0	0	0
Seizures	0	0	0
Nausea/vomiting	0	0	0
Loss of appetite	0	0	0
Congested or runny nose	0	0	0
Palpitations	0	0	0
Coughing up blood	0	0	0
Cold or burning feeling in lungs	0	0	0
Lump in throat	0	0	0
Runny nose	0	0	0
Swollen lymph nodes	0	0	0
Shortness of breath	0	0	0
Bone aches	0	0	0

Pressure at base of head	0	0	0
Jaw pain	0	0	0
Joint pain	0	0	0
Muscle or body aches	0	0.014623417	0.72
Persistent chest pain or pressure	0	0	0
Changed sense of taste	0	0	0
Changed sense of smell	0	0.014390654	0.69
Loss or decrease in quality of vision/blurry vision	0	0	0
Phantom tastes	0	0	0
Hallucinations	0	0	0
Skin bruising	0	0	0
Change in nails	0	0.013030063	0.69
Cracked or dry lips	0	0	0
Dental problems	0	0	0
Discoloration of skin	0	0	0
Dry skin	0	0	0
Dry scalp	0	0	0
Tender or itchy rash not on foot	0	0	0
Dry eyes	0	0	0
Fatigue	0	0	0
New allergies	0	0	0
Swollen hands/feet	0	0	0
Weakened neck	0	0.01949914	0.97
Abbreviations: GBM, gradient-boosting machine using a permutation-based approach; XGB Gain, XGBoost tree machine learning model with gain in accuracy metric.			
In this table, symptoms were sorted based on their importance in the GBM method. For each of the three methods used, we sorted the variables based on their importance and, using this fixed sorting, progressively excluded those with least importance from the model by evaluating the change in the AUC.			

eMethods 1. Health status and symptom severity questions

1. Please choose one point in this 0-100 scale, which can best represent your health today (0 means the worst and 100 means the best). ["slider"]
2. We are trying to get a sense of how bad your long COVID symptoms are when you feel them the most. On the slider below, with 0 being a trivial illness and 100 being unbearable, please let us know what the worst days are like. ["slider"]

eMethods 2. Pre-pandemic comorbidities questions

Have you ever been told by a doctor before January 2020 that you have any of the following?

Check all that apply

["multiple choice"]

1. Any allergies
2. Arthritis (including rheumatoid arthritis, gout, lupus, or fibromyalgia)
3. Asthma
4. Autoimmune disease (including lupus, scleroderma, etc.)
5. Bleeding disorder (including sickle cell disease or Thalassemia)
6. Blood clots
7. Cancer or malignancy of any kind
8. Cerebrovascular conditions affecting blood vessels to or in the brain (including stroke)
9. Chronic lung disease (including emphysema, chronic bronchitis, chronic obstructive pulmonary disease (COPD), or pulmonary fibrosis)
10. Cystic fibrosis
11. Diabetes
12. Ehlers Danlos Syndrome (hypermobile joints)
13. Gastrointestinal issues (including IBS or acid reflux)
14. Heart attack, also called myocardial infarction
15. Heart conditions (including coronary artery disease or cardiomyopathies)
16. Heart failure
17. High cholesterol
18. History of organ transplant (including kidney, liver, heart, or lung)
19. Hypertension or high blood pressure
20. Immunocompromised state (including weakened immune system from blood or bone marrow transplant, immune deficiencies, HIV, use of corticosteroids, or use of other immune-weakening medicines)
21. Kidney disease
22. Liver disease
23. Lyme disease
24. MCAS (mast cell activation syndrome) or other mast cell disorders
25. ME/CFS (myalgic encephalomyelitis/chronic fatigue syndrome)
26. Migraines
27. Neurologic conditions (including seizures, dementia, multiple sclerosis, Parkinson's, neuropathy, small fiber neuropathy, etc.)
28. Postural orthostatic hypotension (POTS) or dysautonomia
29. Spinal disorder(s)
30. Tremors/Internal vibrations
31. Other
32. None of the above

Have you ever been told by a doctor before January 2020 that you have any of the following?

Check all that apply

["multiple choice"]

1. Depressive disorders
2. Anxiety disorders
3. Schizophrenia spectrum and other psychotic disorders
4. Bipolar and related disorders
5. Obsessive-compulsive and related disorders
6. Trauma- and stressor-related disorders
7. Feeding and eating disorders
8. Somatic symptoms (excessive thoughts, feelings and behaviors relating to the physical symptoms) and related disorders
9. Other
10. None of the above

eMethods 3. Current conditions questions

Currently, have you ever been told by a doctor that you have any of the following?

Check all that apply ["multiple choice"]

1. Any allergies
2. Arthritis (including rheumatoid arthritis, gout, lupus, or fibromyalgia)
3. Asthma
4. Autoimmune disease (including lupus, scleroderma, etc.)
5. Bleeding disorder (including sickle cell disease or Thalassemia)
6. Blood clots
7. Cancer or malignancy of any kind
8. Cerebrovascular conditions affecting blood vessels to or in the brain (including stroke)
9. Chronic lung disease (including emphysema, chronic bronchitis, chronic obstructive pulmonary disease (COPD), or pulmonary fibrosis)
10. Cystic fibrosis
11. Diabetes
12. Ehlers Danlos Syndrome (hypermobile joints)
13. Gastrointestinal issues (including IBS or acid reflux)
14. Heart attack, also called myocardial infarction
15. Heart conditions (including coronary artery disease or cardiomyopathies)
16. Heart failure
17. High cholesterol
18. History of organ transplant (including kidney, liver, heart, or lung)
19. Hypertension or high blood pressure
20. Immunocompromised state (including weakened immune system from blood or bone marrow transplant, immune deficiencies, HIV, use of corticosteroids, or use of other immune-weakening medicines)
21. Kidney disease
22. Liver disease
23. Long COVID
24. Lyme disease
25. MCAS (mast cell activation syndrome) or other mast cell disorders
26. ME/CFS (myalgic encephalomyelitis/chronic fatigue syndrome)
27. Migraines
28. Neurological conditions (including seizures, dementia, multiple sclerosis, Parkinson's, neuropathy, small fiber neuropathy, etc.)
29. Postural orthostatic hypotension (POTS) or dysautonomia
30. Spinal disorder(s)
31. Vaccine injury
32. Other
33. None of the above

Currently, have you ever been told by a doctor that you have any of the following?
Check all that apply ["multiple choice"]

1. Depressive disorders
2. Anxiety disorders
3. Schizophrenia spectrum and other psychotic disorders
4. Bipolar and related disorders
5. Obsessive-compulsive and related disorders
6. Trauma- and stressor-related disorders
7. Feeding and eating disorders
8. Somatic symptom and related disorders
9. Other
10. None of the above

eMethods 4. Long COVID symptoms questions

Please select all following health conditions that you have had as a result of long COVID. Check all that apply ["multiple choice"]

1. Abnormally low temperature
2. Fevers, including low-grade fevers
3. Chills but no fever
4. Heat intolerance
5. Cold intolerance
6. Night sweats
7. Other
8. None of the above

Please select all following health conditions that you have had as a result of long COVID. Check all that apply ["multiple choice"]

1. Trouble falling or staying asleep
2. Sleeping more than usual
3. Nightmares
4. Exercise intolerance
5. Excessive fatigue
6. Other
7. None of the above

Please select all following health conditions that you have had as a result of long COVID. Check all that apply ["multiple choice"]

1. Burning sensations
2. Tremors or shakiness
3. Internal tremors or buzzing/vibration
4. Tingling, pins and needles, numbness
5. Neuropathy (nerve sensations including pain) anywhere in the body
6. Seizures
7. Other
8. None of the above

Please select all following health conditions that you have had as a result of long COVID. Check all that apply ["multiple choice"]

1. Abdominal pain
2. Acid reflux or heartburn
3. Diarrhea
4. Constipation
5. Nausea/Vomiting
6. Loss of appetite
7. Other
8. None of the above

Please select all following health conditions that you have had as a result of long COVID. Check all that apply ["multiple choice"]

1. Sore throat
2. Congested or runny nose
3. Palpitations (improper beating of the heart due to electrical impulse problems)
4. Bilateral neck throbbing around lymph nodes

5. Costochondritis (pain in the cartilage that connects a rib to the breastbone)
6. Cough
7. Coughing up blood
8. Cold or burning feeling in lungs
9. Difficulty swallowing
10. Throat pain or discomfort
11. Lump in throat
12. Phlegm in back of throat
13. Postnasal drip
14. Runny nose
15. Swollen lymph nodes
16. Tachycardia (rapid heartbeat) at rest
17. Tachycardia (rapid heartbeat) after standing up
18. Wheezing
19. Shortness of breath or difficulty breathing
20. Other
21. None of the above

Please select all following health conditions that you have had as a result of long COVID. Check all that apply ["multiple choice"]

1. Bone aches
2. Migraine
3. Headache
4. Calf cramps
5. Pressure at base of head
6. Jaw pain
7. Joint pain
8. Kidney pain
9. Mouth sores or sore tongue
10. Muscle or body aches
11. Persistent chest pain or pressure
12. Painful scalp
13. Sharp or sudden chest pain
14. Other
15. None of the above

Please select all following health conditions that you have had as a result of long COVID. Check all that apply ["multiple choice"]

1. Changed sense of taste
2. Changed sense of smell
3. Floaters or flashes of light in vision
4. Loss of hearing
5. Loss or decrease in quality of vision/blurry vision
6. Phantom smells
7. Phantom tastes
8. Hallucinations (visual or auditory)
9. Tinnitus or humming in ears
10. Other

11. None of the above

Please select all following health conditions that you have had as a result of long COVID. Check all that apply ["multiple choice"]

1. Skin bruising
2. Change in nails (i.e. white spots, brittleness, change in moons)
3. Tender or itchy rash or chilblains on the toes or foot)
4. Cracked or dry lips
5. Dental problems (e.g., chipped tooth, tooth loss)
6. Discoloration of the skin (for example: purple or blue on the hands or feet, no blistering)
7. Dry or peeling skin
8. Dry scalp or dandruff
9. Hair loss
10. Itchiness
11. Tender or itchy rash not on foot
12. Chilblains (itching, bumps, red- to violet-colored patches on the hands or feet)
13. Other
14. None of the above

Please select all following health conditions that you have had as a result of long COVID. Check all that apply ["multiple choice"]

1. Constant thirst
2. Changes in voice
3. Clogged ears
4. Dizziness
5. Dry eyes
6. Fatigue
7. Irregular or skipped menstrual cycles
8. Menstrual cycles that are heavier or lighter than normal
9. New allergies
10. Inability to eat or tolerate food
11. Swollen hands or feet
12. Fainting
13. Weakened neck
14. Other
15. None of the above

Please select all that you have. Check all that apply ["multiple choice"]

1. Anxiety
2. Confusion
3. Brain fog; difficulty concentrating or focusing
4. Feelings of impending doom
5. Memory problems
6. Difficulty speaking properly
7. Suicidal thoughts
8. Other
9. None of the above

eMethods 5. RECOVER and LISTEN questions

Symptom	Score	Symptom as it appears in the RECOVER questionnaire and severity criteria, if applicable^a	Symptom as it appears in the LISTEN questionnaire
Smell/taste	8	<ul style="list-style-type: none"> • Loss of or change in smell or taste 	<ul style="list-style-type: none"> • Changed sense of taste • Changed sense of smell • Phantom smells • Phantom tastes
Postexertional malaise	7	<ul style="list-style-type: none"> • Post-exertional malaise (Symptoms worse after even minor physical or mental effort) 	<ul style="list-style-type: none"> • Exercise intolerance
Chronic cough	4	<ul style="list-style-type: none"> • Persistent (chronic) cough 	<ul style="list-style-type: none"> • Cough
Brain fog ^c	3	<ul style="list-style-type: none"> • Problems thinking or concentrating ("brain fog")^c <ul style="list-style-type: none"> ○ Neuro-QoL Cognition Score (≤ 40) 	<ul style="list-style-type: none"> • Brain fog; difficulty concentrating or focusing^c
Thirst	3	<ul style="list-style-type: none"> • Excessive thirst 	<ul style="list-style-type: none"> • Constant thirst
Palpitations	2	<ul style="list-style-type: none"> • Palpitations, racing heart, arrhythmia, skipped beats 	<ul style="list-style-type: none"> • Palpitations (improper beating of the heart due to electrical impulse problems)
Chest pain ^c	2	<ul style="list-style-type: none"> • Chest pain (including chest tightness, pressure)^c <ul style="list-style-type: none"> ○ SAQ-7 (<75) 	<ul style="list-style-type: none"> • Persistent chest pain or pressure^c
Fatigue ^c	1	<ul style="list-style-type: none"> • Fatigue (being very tired)^c <ul style="list-style-type: none"> ○ PROMIS Fatigue Score (moderate or worse) 	<ul style="list-style-type: none"> • Excessive fatigue^c
Sexual desire or capacity	1	<ul style="list-style-type: none"> • Changes in desire for, comfort with or capacity for sex 	Not asked in LISTEN
Dizziness	1	<ul style="list-style-type: none"> • Feeling faint, dizzy, "goofy"; difficulty thinking soon after standing up from a sitting or lying position 	<ul style="list-style-type: none"> • Dizziness

Gastrointestinal	1	<ul style="list-style-type: none"> Gastrointestinal (belly) symptoms (feeling full or vomiting after eating, diarrhea, constipation) 	<ul style="list-style-type: none"> Inability to eat or tolerate food Nausea/Vomiting Diarrhea Constipation
Abnormal movements	1	<ul style="list-style-type: none"> Abnormal movements 	Not asked in LISTEN ^d
Hair loss	0	<ul style="list-style-type: none"> Hair loss 	<ul style="list-style-type: none"> Hair loss

Abbreviations: LISTEN= Listen to Immune, Symptom, and Treatment Experiences Now, Neuro-QoL= Quality of Life in Neurological Disorders, PROMIS=Patient-Reported Outcomes Measurement Information System, RECOVER=Researching COVID to Enhance Recovery, SAQ=Seattle Angina Questionnaire.

a) The table was adapted from Table 2 and eTable 1 of the paper Thaweethai T, Jolley SE, Karlson EW, et al. Development of a Definition of Postacute Sequelae of SARS-CoV-2 Infection. *JAMA*. 2023;329(22):1934–1946. doi:10.1001/jama.2023.8823

b) For RECOVER symptoms that corresponded to multiple LISTEN symptoms, a LISTEN participant receives the corresponding score if they reported at least one of the symptom choices. For example, a participant received a score of 8 if they reported one or more of the four symptoms of 1) Changed sense of taste, 2) Changed sense of smell, 3) Phantom smells, or 4) Phantom tastes

c) For RECOVER symptoms that require additional severity criteria, LISTEN did not assess severity using the same instruments as RECOVER.

d) RECOVER assessed abnormal movements, tremor, seizures, and paralysis as separate symptoms. LISTEN assessed tremors/shakiness and internal tremors or buzzing/vibration but did not assess abnormal movements.