

1 Modelling the Interplay between Responsive Individual Vaccination  
2 Decisions and the Spread of SARS-CoV-2

3  
4 **AUTHORS**

5 Karina Wallrafen-Sam,<sup>1</sup> Maria Garcia Quesada,<sup>1</sup> Benjamin A. Lopman,<sup>1</sup> Samuel M. Jenness<sup>1</sup>

6  
7 <sup>1</sup> Department of Epidemiology, Rollins School of Public Health, Emory University, Atlanta, Georgia, USA

8  
9 **CORRESPONDENCE**

10 *Karina Wallrafen-Sam, Emory University, 1518 Clifton Road, Atlanta, GA, 30322, USA*

11 *Email: [karinawallrafensam2019@u.northwestern.edu](mailto:karinawallrafensam2019@u.northwestern.edu)*

12  
13 **FUNDING**

14 This work was supported by National Institutes of Health grants R01 AI138783, R01 HD097175,  
15 and R01 AI161399.

16  
17 **DISCLAIMER**

18 The findings and conclusions in this report are those of the authors and do not necessarily  
19 represent the official position of the funding agencies.

20  
21 **CONTRIBUTIONS**

22 KWS conceived of, designed, and conducted the analysis and wrote the manuscript. SMJ  
23 provided direction to the development of the study design, supervised the analysis, and  
24 provided critical input to the manuscript. BAL and MGQ provided input on the study design and  
25 critically reviewed and edited the manuscript.

26  
27 **CONFLICTS OF INTEREST**

28 None

29  
30 **WORD COUNTS**

31 Abstract: 150

32 Text: 3'013 (4'482 incl. Methods)

33 **ABSTRACT**

34 The uptake of COVID-19 vaccines remains low despite their high effectiveness. Epidemic  
35 models that represent decision-making psychology can provide insight into the potential impact  
36 of vaccine promotion interventions in the context of the COVID-19 pandemic. We coupled a  
37 network-based mathematical model of SARS-CoV-2 transmission in Georgia, USA with a social-  
38 psychological vaccination decision-making model in which vaccine side effects, post-vaccination  
39 infections, and other unidentified community-level factors could “nudge” individuals towards  
40 vaccine resistance while hospitalization spikes could nudge them towards willingness.

41  
42 Combining an increased probability of hospitalization-prompted resistant-to-willing switches with  
43 a decreased probability of willing-to-resistant switches prompted by unidentified community-  
44 level factors increased vaccine uptake and decreased SARS-CoV-2 incidence by as much as  
45 30.7% and 24.0%, respectively. The latter probability had a greater impact than the former. This  
46 illustrates the disease prevention potential of vaccine promotion interventions that address  
47 community-level factors influencing decision-making and anticipate the case curve instead of  
48 reacting to it.

49 The most impactful intervention to date against the COVID-19 global pandemic has been the  
50 development and distribution of highly effective vaccines.<sup>1,2</sup> The COVID-19 vaccine rollout in the  
51 United States began in late 2020 with a two-dose primary series, before waning immunity and  
52 decreased effectiveness against novel SARS-CoV-2 strains prompted the development of four  
53 sequential booster vaccinations.<sup>3</sup> Although these vaccines have been widely available in the  
54 United States since 2021, only about 70% of the eligible U.S. population had completed the  
55 primary vaccine series as of mid-2023.<sup>4</sup> Primary series coverage was even lower in the state of  
56 Georgia, at around 58%.<sup>4</sup> Vaccine uptake slowed in the later months of 2021, has been  
57 consistently lower in younger age groups, and tapered off markedly for subsequent doses.<sup>4</sup> This  
58 is partially due to vaccine hesitancy – a complex phenomenon related to concerns about the  
59 safety, efficacy, and necessity of these vaccines.<sup>5,6</sup>

60 Encouraging higher vaccine uptake by addressing vaccine hesitancy is crucial, but the  
61 effects of vaccine promotion interventions can be difficult to predict since decisions on whether  
62 and when to receive a vaccine dose are influenced by a multitude of factors – including fear of  
63 illness,<sup>7</sup> altruism,<sup>7,8</sup> social conformity,<sup>9,10</sup> and information spread via social contacts, news  
64 outlets, or social media.<sup>11,12</sup> Mathematical models can compare counterfactual scenarios and  
65 represent complex individual- and community-level behaviours, providing insight into the optimal  
66 formulation and timing of such interventions. While several models of vaccination decision-  
67 making exist, most of them consider one-time decisions; are focused on theory rather than real-  
68 world scenarios; and, most crucially, are rooted in game theory, meaning they rely on the  
69 assumption of rational actors.<sup>13-16</sup> In contrast, social psychological research suggests that  
70 individuals typically rely on heuristics rather than rational cost-benefit analyses when making  
71 complex decisions.<sup>17</sup> For example, decisions generally obey the law of inertia: they tend to  
72 remain stable over time but are sensitive to small “nudges” from unfavourable outcomes.<sup>18</sup> To  
73 provide valid insights into vaccination interventions, mathematical models are needed that  
74 account for such heuristics and capture feedback effects between behaviour and epidemic  
75 outcomes.

76 The role of heuristics and inertia in decision-making has been studied in the context of  
77 annual influenza vaccination but is not yet well understood in the context of the ongoing COVID-  
78 19 vaccine rollout. Papst et al developed a seasonal influenza model in which prior infections  
79 and vaccine side effects could “nudge” persons to change their future vaccination decisions,  
80 creating a feedback loop between behaviour and disease spread.<sup>19</sup> This model, while theoretical  
81 in its focus, was consistent with the empirical findings of a longitudinal cohort study on trends in  
82 influenza vaccination: the cohort’s vaccination behaviour was generally stable over time, but flu

83 infections could influence subsequent vaccination decisions and those who did switch between  
84 approaches tended to persist in their new behaviour, in a practical illustration of the law of  
85 inertia.<sup>20</sup> Adapting the modelling framework developed by Papst et al for a mathematical model  
86 of SARS-CoV-2 could provide insight into how vaccine promotion interventions should be  
87 formulated and targeted specifically to boost the stagnant levels of COVID-19 vaccine coverage.

88 In this study, we utilized a model of SARS-CoV-2 dynamics in the state of Georgia – a  
89 high-burden population with significant gaps in vaccine coverage – and coupled it with a social-  
90 psychological decision-making model in which vaccine side effects, breakthrough infections,  
91 and the overall state of the outbreak could “nudge” individuals to change their vaccination  
92 behaviour. Our goal was to use this novel combination of methods to explore how changes to  
93 the probabilities of individuals adapting their behaviour after experiencing one of these “nudges”  
94 might impact disease incidence.

95

## 96 RESULTS

97 *Model Overview.* Our network-based mathematical model was parameterized and calibrated to  
98 represent the COVID-19 epidemic in the state of Georgia, USA from January 2021 to August  
99 2022. **Figure 1** shows the calibrated model’s simulated monthly infection, hospitalization, and  
100 death rates against empirical trends in Georgia, with hospitalizations peaking in August 2021  
101 (Delta wave) and infections peaking in January 2022 (Omicron wave). There were 131.1  
102 infections (50% SI: 129.9, 132.3), 82.0 symptomatic cases (50% SI: 81.2, 82.7), and 0.36  
103 deaths (50% SI: 0.35, 0.38) per 100’000 person days in this model. **Figure 2** displays the  
104 model’s simulated vaccine coverage by age group and dose against the corresponding  
105 empirical coverage.

106 We compared this calibrated reference model to counterfactual scenarios in which we  
107 decreased the probability that a breakthrough infection would prompt a willing-to-resistant  
108 vaccine attitude switch (hereafter referred to as the Breakthrough Nudge Probability or  
109 Breakthrough NP); increased the probability that a spike in hospitalizations would prompt a  
110 resistant-to-willing switch (hereafter referred to as the Hospitalization Nudge Probability or  
111 Hospitalization NP); and/or decreased the probability of a vaccine willing-to-resistant switch  
112 related to something other than side effects or breakthrough infections (hereafter referred to as  
113 the Miscellaneous Nudge Probability or Miscellaneous NP). A detailed description of the model,  
114 its parameters, and the scenario specifications is provided in the Methods and in **Table 1**.

115 *Intervention Impacts.* Doubling the Hospitalization NP generally led to a slight increase in the  
116 coverage of all vaccine doses; the absolute change ranged from about 1% to 5% (for example,

117 for 18- to 49-year-olds, coverage changed from 74.2%, 61.4%, and 18.3% for the first, second,  
118 and third doses to 77.0%, 64.9%, and 22.8%). Reducing the Breakthrough NP to 0 had no  
119 discernible impact. In contrast, reducing the Miscellaneous NP to 0 led to marked increases in  
120 coverage of the second, third, and (if applicable) fourth doses, with the absolute change ranging  
121 from 9% to 48%, while the first dose coverage was slightly reduced (**Table 2**). When the  
122 Miscellaneous NP was fixed, the total doses administered generally increased as the  
123 Hospitalization NP increased but did not change substantially as the Breakthrough NP  
124 decreased (**Figure 3A1**). The relationship between the Hospitalization NP and Miscellaneous  
125 NP was more complex: simultaneously increasing the Hospitalization NP and decreasing the  
126 Miscellaneous NP while the Breakthrough NP was fixed led to an increase in doses  
127 administered if the Miscellaneous NP was above about 20% of its reference value. When the  
128 Miscellaneous NP was decreased further, the impact of the Hospitalization NP became  
129 negligible (**Figure 3A2**).

130 The overall pattern for incidence was the inverse of that for doses: a lower  
131 Miscellaneous NP and a higher Hospitalization NP generally led to fewer infections, although  
132 the impact of the Hospitalization NP was negligible for the lowest values of the Miscellaneous  
133 NP (**Table 3** and **Figure 3B**). The minimum incidence rate across scenarios was 99.5 infections  
134 per 100'000 person-days (50% SI: 97.4, 101.5), corresponding to 31.5 (50% SI: 29.5, 33.7)  
135 infections averted per 100'000 person-days compared to the reference scenario; this occurred  
136 when the Hospitalization NP was 160% of its reference value and the Miscellaneous NP was 0.  
137 The minimum symptomatic case rate across scenarios was 60.3 cases per 100'000 person-  
138 days (50% SI: 59.1, 61.1), corresponding to 21.7 (50% SI: 20.8, 22.8) cases averted per  
139 100'000 person-days compared to the reference scenario; this occurred when the  
140 Hospitalization NP was doubled and the Miscellaneous NP was 0.

141 **Table 4** and **Figure 3C** demonstrate a similar pattern for deaths, with more noise from  
142 model stochasticity. The minimum death rate across scenarios was 0.25 deaths per 100'000  
143 person-days (50% SI: 0.24, 0.27), corresponding to 0.11 deaths averted per 100'000 person-  
144 days (50% SI: 0.09, 0.13) compared to the reference scenario; this occurred when the  
145 Hospitalization NP was doubled and the Miscellaneous NP was zero.

146 **Figure 4** shows the impact of nine selected intervention scenarios on vaccine coverage  
147 over time relative to the epidemic curve. Doubling the Hospitalization NP alone (Panel A)  
148 affected all vaccine-resistant persons and increased their vaccine uptake relative to the  
149 reference scenario across all doses, starting when the hospitalization threshold was typically  
150 crossed in late August 2021. As a result, the subsequent January 2022 infection peak was

151 somewhat reduced. Halving or eliminating the Breakthrough NP (Panels B and C) affected only  
152 the much smaller population subset who experienced breakthrough infections and caused a  
153 nominal increase in their third- and fourth-dose uptake from February 2022 onward. Halving or  
154 eliminating the Miscellaneous NP alone (Panels F and G) affected all individuals who received  
155 at least one dose and increased their second-, third-, and fourth-dose uptake from February  
156 2021 onward on a much larger scale; as a result, the subsequent August/September 2021 and  
157 January 2022 peaks were both more considerably reduced. When the Miscellaneous NP was  
158 only halved, the hospitalization threshold was generally still crossed in autumn 2021, so also  
159 doubling the Hospitalization NP had an additive effect (Panel H). When the Miscellaneous NP  
160 was reduced to zero, however, infections – and, by extension, hospitalizations – were reduced  
161 enough that the threshold was no longer crossed at all, making the Hospitalization NP irrelevant  
162 (Panel I).

163 *Additional Results.* The relative impact of the different intervention scenarios was the same  
164 across age targeting approaches, but the interventions acted on a smaller scale when they were  
165 limited to those aged 65+ years (**Supplemental Figures S1 and S2**). Sensitivity analyses of the  
166 infection- and vaccine-induced immunity parameters showed that, while the scale of the  
167 outbreak varied, the relative impact of the nine selected interventions was similar, except that  
168 interventions on the Hospitalization NP became less impactful when the half-life of vaccine  
169 induced immunity was increased from 80 days to 140 days or more (**Supplemental Tables S1**  
170 **and S2**).

171

## 172 **DISCUSSION**

173 In our study, we used the novel combination of a network-based model of SARS-CoV-2  
174 dynamics and a social-psychological model of COVID-19 vaccination decision-making to  
175 investigate which of the pathways between vaccine willingness and resistance might have the  
176 greatest influence on vaccine coverage and disease incidence. We found the miscellaneous  
177 willing-to-resistant pathway to be the most influential: eliminating the drop-off in vaccine uptake  
178 between doses due to community-level miscellaneous factors increased the number of vaccine  
179 doses administered by 30.7% and, as a result, decreased the incidence rate by 23.6%.  
180 Doubling the probability that a spike in hospitalized prevalence would prompt vaccine hesitant  
181 persons to vaccinate increased vaccine uptake by 5.4% and decreased incidence by 4.0%, a  
182 smaller but still substantial impact. In contrast, eliminating the probability that a breakthrough  
183 infection would prompt a previously vaccine willing person to forgo further vaccination had  
184 negligible population-level benefits. Overall, our study suggests that epidemic outcomes are

185 improved when baseline vaccine hesitancy is addressed to reduce the vaccine-naïve population  
186 while as many vaccinated persons as possible are kept on the path to subsequent doses, and  
187 that optimizing the timing of any vaccine promotion intervention relative to the timing of infection  
188 waves – so that the interventions anticipate the case curve instead of reacting to it – is critical.

189 In our study, interventions affecting persons' responses to community-level factors were  
190 impactful, while those affecting responses to individual-level factors were not, primarily because  
191 far more persons were exposed to the former set of interventions than the latter. The  
192 miscellaneous willing-to-resistant pathway could affect anyone who received at least one  
193 vaccine dose within the model timeframe; it was mostly meant to encompass collective factors,  
194 such as widespread false messaging on social media about vaccine-induced female  
195 infertility.<sup>21,22</sup> The hospitalization-related resistant-to-willing-pathway, similarly, could affect  
196 anyone who was vaccine resistant when hospitalizations spiked – not just those who were  
197 hospitalized themselves. Conversely, the breakthrough-related willing-to-resistant pathway  
198 could only affect the small number of fully vaccinated and still vaccine willing individuals who  
199 became infected and experienced symptoms despite the layers of protection against both  
200 transmission and symptomatic disease provided by the vaccine. Thus, the fundamental  
201 difference between changes to the hospitalization or miscellaneous nudge probabilities, which  
202 were beneficial on a population level, and changes to the breakthrough nudge probability, which  
203 were not, is that the former set of changes had a much wider reach. This finding regarding the  
204 importance of scale is consistent with empirical evaluations of vaccine promotion interventions:  
205 Athey et al found that the impact of social media advertisements promoting COVID-19  
206 vaccination was small on a per-person basis but in aggregate convinced upwards of 11 million  
207 persons.<sup>23</sup> The distinction we made between individual- and community-level precipitating  
208 events is unique to our model. In the Papst et al model of influenza vaccination, individuals  
209 based their decisions solely on personal past experiences of infections or vaccine side effects;  
210 the two model parameters controlling these events (the vaccine efficacy and the probability of  
211 vaccine morbidity) were both relevant to their model predictions.<sup>19</sup> By considering more varied  
212 precipitating events, our study contributes an additional finding: vaccine promotion interventions  
213 that focus on experiences shared by wide segments of the population may have more disease  
214 prevention potential than those focused on individual experiences with the COVID-19 vaccine in  
215 isolation.

216 Our results also suggest that, due to their better optimized timing, proactive interventions  
217 (e.g., changes to the miscellaneous nudge probability) have much more disease prevention  
218 potential than interventions that are reactive to naturally occurring transmission events (e.g.,



219 changes to the hospitalization and breakthrough nudge probabilities). Lowering the  
220 miscellaneous nudge probability meant that as soon as an individual received their first dose,  
221 their willingness to receive the next was cemented. As such, not only did changes to the  
222 miscellaneous nudge probability cause the largest increase in vaccine coverage, but they also  
223 acted the fastest, causing increased dose two uptake as early as February 2021 – the month  
224 after the start of the vaccine rollout. These interventions thus affected both infection spikes that  
225 occurred within our model timeframe. In contrast, changes to the hospitalization nudge  
226 probability could affect the later spike but not the earlier one, which was already well underway  
227 by the time the hospitalized prevalence in our model usually crossed its threshold in late August  
228 2021; if the miscellaneous nudge probability was low enough, it could pre-empt interventions on  
229 the hospitalization nudge probability altogether by keeping the hospitalized prevalence below its  
230 threshold for the full model timeframe. Similarly, the minor increases in third- and fourth-dose  
231 uptake caused by changes to the breakthrough nudge probability began very late in the model  
232 timeframe, by which point the number of infections that could potentially have been averted was  
233 small. These results are consistent with those of other COVID-19 modelling studies that have  
234 found the success of a particular vaccination campaign to be highly sensitive to its timing:  
235 Gavish et al projected that advancing Israel’s summer 2021 booster campaign by 2 weeks could  
236 have halved the number of cases in the subsequent three months.<sup>24</sup> The models developed by  
237 Papst et al and a preceding influenza study by Wells et al both assumed that each annual  
238 influenza vaccine rollout concluded before that year’s outbreak began;<sup>19,25</sup> they therefore did not  
239 consider how the rollout’s impact could vary based on timing. Our model’s ability to account for  
240 concurrent vaccination and transmission dynamics facilitated our finding that proactively timed  
241 interventions – ones that, for example, anticipate increases in hospitalized prevalence instead of  
242 reacting to them after the fact – could have a greater impact on epidemic outcomes.

243 Finally, we found that limiting vaccine promotion interventions to those aged 65 years or  
244 older, who are at increased risk of severe outcomes, led to fewer prevention benefits than when  
245 either 18- to 64-year-olds or all adults were targeted. This was likely due in part to the relatively  
246 small size of the older age group and to their higher reference levels of vaccine willingness,  
247 which left less room for intervention-prompted increases. Our study supports findings from  
248 previous modelling studies suggesting that vaccine hesitancy should be addressed in younger  
249 populations, who are less susceptible to severe disease or death but who play a larger role in  
250 transmission and have lower baseline vaccine willingness.<sup>24,26,27</sup>

251 Our approach has several limitations. First, we only explicitly modelled and tracked three  
252 factors that could affect vaccination decisions: vaccine side effects, breakthrough infections, and



253 hospitalized prevalence. To account for all other potential factors, we used a “miscellaneous”  
254 willing-to-resistant pathway in our vaccination decision-making model, with receipt of a given  
255 vaccine dose used as a proxy for the subsequent, unidentified events that might trigger vaccine  
256 resistant attitudes. Without information on the timing of those events, we had to assume that  
257 individuals who became vaccine resistant for these other reasons between receiving dose  $n$  and  
258 when they would otherwise have received dose  $n + 1$  did so immediately after receipt of dose  $n$ ,  
259 which may have exaggerated the impact of the miscellaneous nudge due to the timing factors  
260 discussed above.

261 We also did not consider clustering by vaccination type, correlations between a parent’s  
262 type and their children’s vaccination status, or the ways that vaccine resistant views might  
263 propagate through a network (e.g., how persons might be influenced by breakthrough infections  
264 within their household or social network even if they themselves were not a breakthrough case).  
265 By assuming that unvaccinated persons were distributed randomly through the network, we may  
266 have overestimated the indirect protection they received via vaccinated contacts. This may, in  
267 turn, have muted the impact of our interventions, since we did not account for the possibility of  
268 the interventions breaking up pockets of vaccine resistance within certain households or  
269 neighbourhoods – but as the issue of clustering is complex, it should be explored further by  
270 future work on this model.

271 Another limitation of our model is the uncertainty to which some of our parameters are  
272 subject. Due to data limitations, our reference willing-to-resistant nudge probabilities were  
273 extrapolated from surveys of vaccine willingness beyond their intended use. Since COVID-19  
274 emerged relatively recently, data on the waning of vaccine-induced and natural immunity is  
275 currently limited, and we did not account for heterogeneity in immunity by age, disease severity,  
276 or other factors.<sup>28-30</sup> To address this limitation, we performed sensitivity analyses on the two  
277 immunity duration parameters and found that our conclusions about which interventions were  
278 most effective generally held.

279 In conclusion, our findings indicate that addressing community-level factors influencing  
280 decision-making may have more disease prevention potential than intervening based on  
281 individuals’ own vaccination and infection history, and that attention should be paid to  
282 formulating vaccination strategies that accurately predict and pre-empt increases in the case  
283 curve. These conclusions were facilitated by a mathematical model that included realistic details  
284 of human behaviour based on established results in social psychology, illustrating that models  
285 with greater psychological realism can be useful for informing future public health interventions  
286 that address barriers to vaccination.

## 287 **METHODS**

288 This study used a network-based mathematical model of SARS-CoV-2 transmission, disease  
289 progression, and vaccination behaviours in the population of Georgia, USA over a twenty-month  
290 period from January 2021 to August 2022 – i.e., the month in which eligibility for the first vaccine  
291 dose began to expand in Georgia to the month before the start of the bivalent booster rollout.  
292 Our model was built using EpiModelCOVID, a previously validated extension of the EpiModel  
293 software platform, which uses the statistical framework of exponential random graph models  
294 (ERGMs) to simulate dynamic contact networks.<sup>31</sup> For this study, we built a social-psychological  
295 decision-making model into the vaccination processes within EpiModelCOVID. The model code  
296 and software are available on GitHub (<https://github.com/EpiModel/COVID-Vax-Decisions>).

297 *Core Model Structure.* Our model tracked 100'000 persons (agents) representing a sampled  
298 population of the state of Georgia, USA. Agents were assigned an initial age according to  
299 Georgia's age pyramid as of 2020.<sup>32</sup> They could exit the model population at any time through  
300 death (general or disease-specific), while new agents entered the model population exclusively  
301 through birth. All modelled agents were members of two distinct, overlapping contact network  
302 layers and transmission environments: community and household.

303 For the community network layer, all contacts (edges) were non-persistent (no duration).  
304 Based on the COVIDVu study, we estimated the mean daily degree for this network layer to be  
305 13.8 across all agents and 5.7 across agents aged 65 years or older.<sup>33</sup> The POLYMOD social  
306 mixing study extrapolated to U.S. settings was used to parameterize age mixing, with the within-  
307 group contact proportion set at 69% for those aged under 18 years, 81% for 18- to 64-year-olds,  
308 and 21% for 65+-year-olds.<sup>34</sup> The community environment was estimated with an ERGM from  
309 which we then simulated at each timestep.

310 The household network layer was comprised of persistent contacts, lasting from entry  
311 into the population to simulation end or death. Each agent was assigned to a household  
312 according to an algorithm based on U.S. Census data: 1) 29.2% of households had at least one  
313 member aged under 18 years;<sup>35</sup> 2) 79.1% of households had at least one 18- to 64-year-old;<sup>35</sup>  
314 3) 31.4% of households had at least one 65+-year-old;<sup>35</sup> 4) the average household had 2.7  
315 persons;<sup>36</sup> 5) every household with a child also had at least one adult; and 6) 97.9% of children  
316 had an 18- to 64-year-old in their household.<sup>37</sup> We took this approach due to the lack of recent  
317 social mixing data for children in U.S. settings. Household edges were specified such that each  
318 household was fully saturated and each edge was within a single household. Community and  
319 household contacts were subsequently combined to create a multi-layer dynamic network.

320 Our model represented the natural history of COVID-19 using a SEIRS framework.  
321 Susceptible agents could stochastically transition to the exposed state upon contact with an  
322 infected person (i.e., a discordant contact). The daily probability of infection given a discordant  
323 contact depended on the vaccination status of the susceptible agent, the symptom status of the  
324 infectious agent, and whether the contact was household- or community-level. Newly infected  
325 agents were stochastically assigned to either an asymptomatic or symptomatic clinical pathway,  
326 with a subset of symptomatic agents subsequently designated for hospitalization. The  
327 probabilities of symptoms and hospitalization both depended on age and vaccination status.  
328 Agents in the hospitalized state experienced a higher age-specific mortality rate than those in  
329 other states. Once recovered, agents stochastically re-entered the susceptible state, where they  
330 could be reinfected. Parameters defining the model's disease progression, transmission, and  
331 clinical epidemiology (**Table 1**) were either drawn from existing literature or calibrated as  
332 described below.

333 *Vaccination Decision-Making Process.* Each adult agent was assigned a binary vaccination  
334 “type” – resistant or willing – such that the prevalence of vaccine willingness by age group at the  
335 start of the vaccine rollout matched the empirical distribution in late 2020.<sup>38,39</sup> The vaccination  
336 decision-making process for agents aged under 18 years was not explicitly modelled, given  
337 fundamental differences in this process for minors versus adults. Instead, children received  
338 vaccine doses according to age-specific rates.

339 In accordance with the law of inertia in decision-making,<sup>18</sup> agents maintained their initial  
340 attitude toward vaccination until an adverse event (“nudge”) prompted them to change –  
341 meaning disease outcomes could affect vaccination behaviour, which in turn affected future  
342 disease outcomes. Four such nudges were considered: 1) experiencing vaccine side effects  
343 could prompt a vaccine willing individual (who had received at least one dose) to become  
344 vaccine resistant; 2) experiencing an infection while fully vaccinated (a “breakthrough infection”)  
345 could prompt a vaccine willing individual (who had received at least two doses) to lose trust in  
346 the vaccine and become vaccine resistant; 3) increased hospitalized prevalence in the  
347 population could prompt any vaccine resistant individual to grow more concerned about the  
348 spread of COVID-19 and become vaccine willing; and 4) an additional willing-to-resistant  
349 pathway covered all other reasons for developing vaccine resistant attitudes (among individuals  
350 who had received at least one dose), such as social conformity or media influences. For this  
351 fourth miscellaneous pathway, the timing of an individual's last vaccine dose was used as a  
352 proxy for the timing of the unknown precipitating event prompting resistance towards future  
353 doses.

354 To parameterize the first two nudges, we identified: 1) the odds ratio comparing the  
355 likelihood of booster willingness for those who had versus had not missed work due to side  
356 effects from the primary vaccination series;<sup>40</sup> and 2) the odds ratio comparing the likelihood of  
357 booster willingness for those who had received the primary vaccination series and had versus  
358 had not been subsequently infected.<sup>41</sup> We converted these odds ratios to one-time probabilities  
359 of being “nudged” towards vaccine resistance. For the third nudge, we estimated the probability  
360 that a vaccine-eligible adult in Georgia was convinced to vaccinate by an increase in  
361 hospitalized COVID-19 prevalence between July and September 2021, using the finding that  
362 38% of that period’s surveyed late adopters were motivated by concern about local  
363 hospitalizations.<sup>9</sup> The probabilities of behaviour change associated with the fourth nudge were  
364 treated as free parameters in the calibration process.

365 At any timestep, agents could stochastically undergo vaccination if they were not  
366 currently symptomatic, had not tested positive in the last two weeks, were vaccine willing (for  
367 adult agents), and were currently eligible for their next dose based on their age group and  
368 vaccination history. Vaccination reduced the risk of disease acquisition, the risk of progression  
369 to symptomatic disease, and the risk of eventual hospitalization. Vaccine immunity waned over  
370 time following an exponential decay with a half-life of 80 days.<sup>42</sup>

371 *Calibration.* The per-act infection probability was calibrated so that the simulated number of  
372 incident infections by month matched the confirmed case counts reported by the Georgia  
373 Department of Public Health (GDPH),<sup>43</sup> adjusted to account for underreporting<sup>44</sup> and scaled to a  
374 population of 100’000. To account for time-varying coverage of non-pharmaceutical  
375 interventions and the introduction of new variants, this per-act infection probability was boosted  
376 by 34% for two periods of increased transmission and suppressed by 40% for three periods of  
377 decreased transmission. The age-specific hospitalization proportions and disease-related  
378 mortality multiplier were calibrated so that the resultant COVID-19 related hospital admissions  
379 and deaths by month matched GDPH reports.<sup>43</sup> Finally, age- and dose-specific vaccination rates  
380 and the nudge probabilities for the miscellaneous willing-to-resistant pathway were calibrated so  
381 that the resultant vaccine coverage by age, dose, and month matched the levels reported by the  
382 CDC for Georgia.<sup>4</sup>

383 *Intervention Scenarios.* We compared our calibrated model to counterfactual scenarios that  
384 explored hypothetical interventions on three of the four nudges in our model. These  
385 interventions did not affect the precipitating events, but rather the agents’ responses to them.  
386 Specifically, we 1) kept the probability that vaccine side effects would prompt a vaccine willing-

387 to-resistant switch constant across all scenarios; 2) decreased the probability that a  
388 breakthrough infection would prompt a willing-to-resistant switch (the Breakthrough Nudge  
389 Probability or Breakthrough NP) to as little as zero; 3) increased the probability that a spike in  
390 hospitalizations would prompt a resistant-to-willing switch (the Hospitalization Nudge Probability  
391 or Hospitalization NP) to as much as two times the reference value; and 4) decreased the  
392 probability of a vaccine willing-to-resistant switch related to something other than side effects or  
393 breakthrough infections (the Miscellaneous Nudge Probability or Miscellaneous NP) to as little  
394 as zero. We then also explored the impact of applying these changes to only older adults (65+  
395 year-olds) or only younger adults (18- to 64-year-olds) instead of all adult agents.

396         Since data on the duration of COVID-19 immunity was limited, we performed sensitivity  
397 analyses on two particularly uncertain parameters: the average duration of natural immunity to  
398 infection after recovery and the half-life of vaccine-induced immunity.

399 *Model Output.* For each model scenario, we tracked the incidence rate of SARS-CoV-2  
400 infections, the COVID-related death rate, and the per-dose vaccine coverage by age group over  
401 time. The median and 50% simulation interval (SI) of each output across 128 simulations per  
402 scenario were reported.

## TABLES & FIGURES

**Table 1. Selected model parameters**

| Parameter   | Value  | Source                       |
|---|--|------------------------------|
| <b>Population &amp; Household Characteristics</b>                             |  |                              |
| <i>Population proportion by age group*</i>                                    | 0.233, 0.620, 0.147  | [32]                         |
| <i>Avg. household size</i>  | 2.7  | [36]                         |
| <i>Proportion of households with members in given age group*</i>              | 0.292, 0.791, 0.314  | [35]                         |
| <i>Proportion of children living with adult under 65</i>                      | 0.979  | [37]                         |
| <b>Community Contact Patterns</b>   |  |                              |
| <i>Overall daily mean degree</i>  | 13.8   | [33]                         |
| <i>Daily mean degree for persons aged 65+</i>                                 | 5.7  | [33]                         |
| <i>Associative mixing proportion by age group*</i>                            | 0.69, 0.81, 0.21   | [34]                         |
| <b>Transmission &amp; Natural History</b>                                     |  |                              |
| <i>Reference per-act transmission probability</i>                             | 0.050  | Calibrated                   |
| <i>Relative transmission risk if asymptomatic</i>                             | 0.5  | [45]                         |
| <i>Contacts per household pairing per day</i>                                 | 3  | Calculated from [46]         |
| <i>Proportion symptomatic by age group^</i>                                   | 0.573, 0.642, 0.760, 0.800, 0.813, 0.814, 0.769, 0.723, 0.666  | [47]                         |
| <i>Proportion hospitalized by age group^</i>                                  | 0.006, 0.006, 0.008, 0.015, 0.021, 0.027, 0.036, 0.046, 0.054  | Calibrated; ratios from [47] |
| <i>Avg. duration of latent period, in days</i>                                | 5.5  | [48]                         |
| <i>Avg. duration of pre-clinical infection, in days</i>                       | 1.5  | [45]                         |
| <i>Avg. duration of clinical infection, in days</i>                           | 3.5  | [45]                         |
| <i>Avg. duration of hospitalization, in days</i>                              | 10.0   | [49]                         |
| <i>Avg. duration of asymptomatic infection, in days</i>                       | 5.0  | [45]                         |
| <i>Avg. duration of natural immunity, in days</i>                             | 300  | [42]                         |
| <i>General annual mortality rate, in deaths per 100'000 persons per year†</i> | 608, 30, 13, 22, 63, 116, 143, 187, 228, 300, 416, 600, 945, 1'453, 1'952, 2'817, 4'369, 7'159, 15'626 | [50]                         |
| <i>COVID-related mortality multiplier</i>                                     | 1800   | Calibrated                   |
| <b>Vaccination</b>  |  |                              |
| <i>Proportion initially vaccine willing‡</i>                                  | N/A, N/A, 0.70, 0.75, 0.91   | [38] and [39]                |
| <i>Hospitalization nudge probability</i>                                      | 0.102  | Calculated from [9]          |
| <i>Side effect nudge probability</i>  | 0.073  | [40]                         |
| <i>Breakthrough infection nudge probability</i>                               | 0.125  | [41]                         |
| <i>Miscellaneous nudge probability (post Dose 1)‡</i>                         | N/A, N/A, .18, .18, .12  | Calibrated                   |
| <i>Miscellaneous nudge probability (post Dose 2)‡</i>                         | N/A, N/A, .75, .43, .35  | Calibrated                   |

---

|  |  |                              |
|--|--|------------------------------|
| <i>Miscellaneous nudge probability (post Dose 3)<sup>‡</sup></i> | N/A, N/A, N/A, 0.50, 0.42              | Calibrated                   |
| <i>Hospitalization threshold in cases per 100'000</i>            | 36                                     | [51]                         |
| <i>Time step for start of dose 1 rollout<sup>‡, #</sup></i>      | 534, 132, 84, 74, 11                   | [52], [53], [54], [55], [56] |
| <i>Time step for start of dose 3 rollout<sup>‡, #</sup></i>      | N/A, 368, 323, 323, 265                | [57], [58], [59]             |
| <i>Time step for start of dose 4 rollout<sup>‡, #</sup></i>      | N/A, N/A, N/A, 453, 453                | [60]                         |
| <i>Dose 1 vaccination rate, per day<sup>‡</sup></i>              | 0.0005, 0.0012, 0.0160, 0.0160, 0.0180 | Calibrated                   |
| <i>Dose 2 vaccination rate, per day<sup>‡</sup></i>              | 0.010, 0.015, 0.300, 0.300, 0.450      | Calibrated                   |
| <i>Dose 3 vaccination rate, per day<sup>‡</sup></i>              | N/A, 0.003, 0.045, 0.038, 0.015        | Calibrated                   |
| <i>Dose 4 vaccination rate, per day<sup>‡</sup></i>              | N/A, N/A, N/A, 0.005, 0.008            | Calibrated                   |
| <i>Relative risk of infection, by dose</i>                       | 0.324, 0.112, 0.120, 0.120             | [61], [62]                   |
| <i>Relative risk of symptoms, by dose</i>                        | 0.40, 0.09, 0.09, 0.09                 | [63], [62]                   |
| <i>Relative risk of hospitalization, by dose</i>                 | 0.30, 0.02, 0.07, 0.07                 | [63], [62]                   |
| <i>Per-dose probability of side effects</i>                      | 0.18                                   | [40]                         |
| <i>Half-life of vaccine immunity, in days</i>                    | 80                                     | [42]                         |

---

\* Values displayed for the following age groups: <18, 18-64, and 65+ yrs.

^ Values displayed for the following age groups: <10, 10-19, 20-29, 30-39, 40-49, 50-59, 60-69, 70-79, and 80+ yrs.

† Values displayed for the following age groups: <1, 1-4, 5-9, 10-14, 15-19, 20-24, 25-29, 30-34, 35-39, 40-44, 45-49, 50-54, 55-59, 60-64, 65-69, 70-74, 75-79, 80-84, and 85+ yrs.

‡ Values displayed for the following age groups: <5, 5-17, 18-49, 50-64, and 65+ yrs.

# Day 1 corresponds to 01 January 2021

---



**Table 2. Proportion of adult population vaccinated, by dose and age group, for select scenarios.** Green indicates higher coverage than the reference level and orange indicates lower (by at least 0.5%). Corresponding 50% simulation intervals are available in the Appendix in Table S3.

| Scenario                           |                                 |                                  | Ages 18 - 49 |        |        | Ages 50 – 64 |        |        |        | Ages 65+ |        |        |        |
|------------------------------------|---------------------------------|----------------------------------|--------------|--------|--------|--------------|--------|--------|--------|----------|--------|--------|--------|
| <i>Hospitalization Nudge Prob.</i> | <i>Breakthrough Nudge Prob.</i> | <i>Miscellaneous Nudge Prob.</i> | Dose 1       | Dose 2 | Dose 3 | Dose 1       | Dose 2 | Dose 3 | Dose 4 | Dose 1   | Dose 2 | Dose 3 | Dose 4 |
|                                    |                                 |                                  | %            | %      | %      | %            | %      | %      | %      | %        | %      | %      | %      |
| Ref.                               | Ref.                            | Ref.                             | 74.2         | 61.4   | 18.3   | 74.2         | 61.4   | 36.2   | 7.3    | 89.8     | 78.9   | 51.8   | 17.0   |
| 200% of Ref.                       | Ref.                            | Ref.                             | 77.0         | 64.9   | 22.8   | 77.0         | 64.9   | 40.4   | 8.0    | 91.0     | 81.1   | 55.8   | 18.1   |
| Ref.                               | 50% of Ref.                     | Ref.                             | 74.2         | 61.4   | 18.4   | 74.2         | 61.4   | 36.2   | 7.3    | 89.8     | 78.9   | 51.9   | 17.1   |
| Ref.                               | 0% of Ref.                      | Ref.                             | 74.2         | 61.3   | 18.3   | 74.2         | 61.3   | 36.3   | 7.4    | 89.8     | 78.9   | 52.0   | 17.2   |
| 200% of Ref.                       | 50% of Ref.                     | Ref.                             | 77.0         | 64.9   | 22.9   | 77.0         | 64.9   | 40.5   | 8.0    | 91.0     | 81.1   | 55.8   | 18.1   |
| 200% of Ref.                       | 0% of Ref.                      | Ref.                             | 77.1         | 64.9   | 22.9   | 77.1         | 64.9   | 40.6   | 8.0    | 91.0     | 81.1   | 55.9   | 18.2   |
| Ref.                               | Ref.                            | 50% of Ref.                      | 74.1         | 67.2   | 41.5   | 74.1         | 67.2   | 53.5   | 15.9   | 89.7     | 83.7   | 67.9   | 30.5   |
| Ref.                               | Ref.                            | 0% of Ref.                       | 71.4         | 70.4   | 66.2   | 71.4         | 70.4   | 71.7   | 29.1   | 88.8     | 87.6   | 85.1   | 49.1   |
| 200% of Ref.                       | Ref.                            | 50% of Ref.                      | 77.0         | 70.4   | 45.4   | 77.0         | 70.4   | 57.2   | 16.5   | 90.9     | 85.4   | 70.5   | 31.3   |
| 200% of Ref.                       | Ref.                            | 0% of Ref.                       | 71.4         | 70.4   | 66.2   | 71.4         | 70.4   | 71.6   | 29.1   | 88.8     | 87.6   | 85.1   | 49.1   |

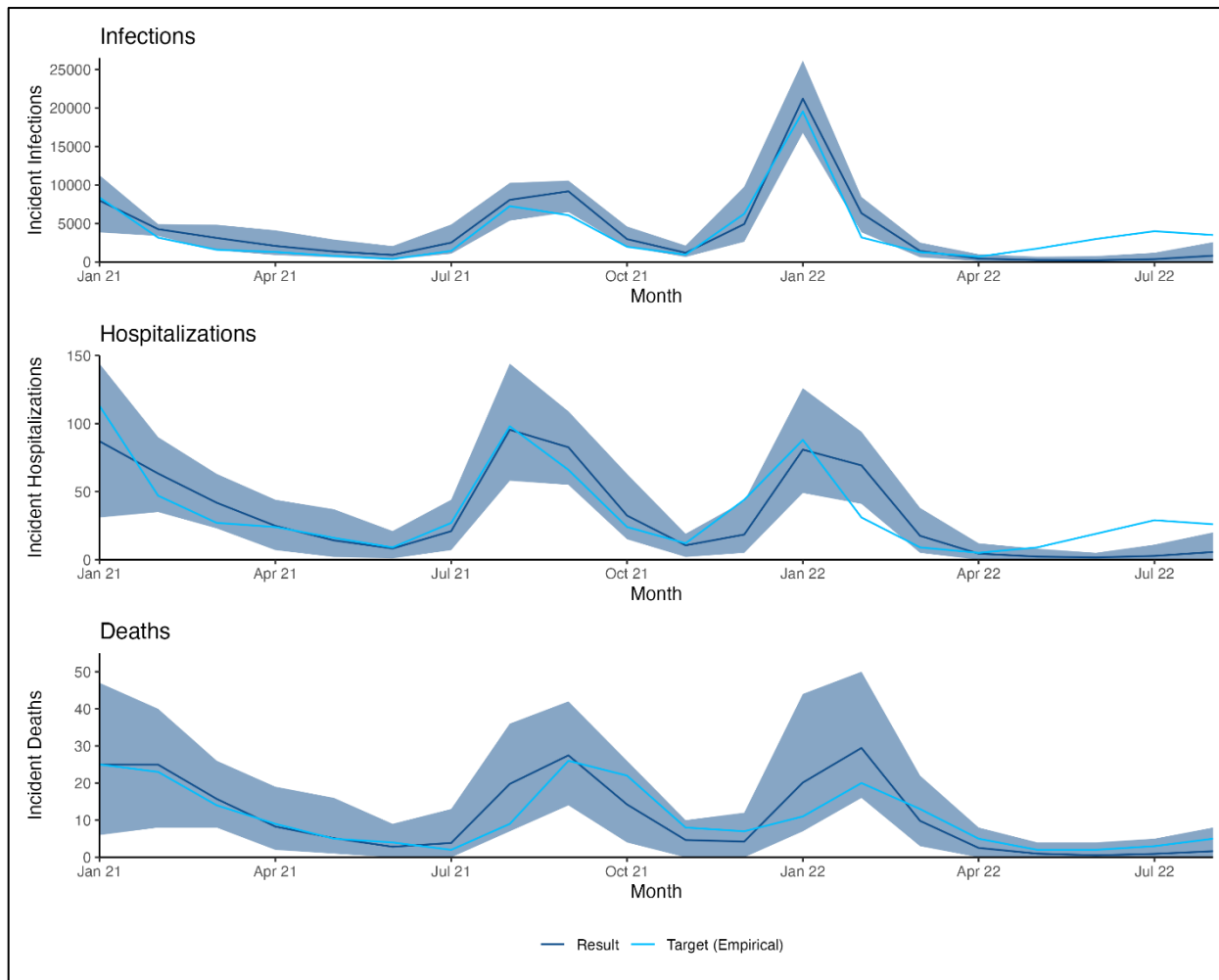
**Table 3. Overall infection rate and infections averted by end of simulation, for select scenarios.** Green indicates fewer infections than the reference level and orange indicates more. Corresponding 50% simulation intervals are available in the Appendix in Table S4.

| Scenario                           |                                 |                                  | Total Infections per 100'000 PD | Infections Averted per 100'000 PD | Percent of Infections Averted | Infections Averted per Addtl. 1'000 Doses |
|------------------------------------|---------------------------------|----------------------------------|---------------------------------|-----------------------------------|-------------------------------|---|
| <i>Hospitalization Nudge Prob.</i> | <i>Breakthrough Nudge Prob.</i> | <i>Miscellaneous Nudge Prob.</i> | <i>n</i>                        | <i>n</i>                          | %                             | <i>n</i>                                  |
| Reference                          | Reference                       | Reference                        | 131.1                           | -                                 | -                             | -   |
| 200% of Reference                  | Reference                       | Reference                        | 125.8                           | 5.3                               | 4.0                           | 391.0                                     |
| Reference                          | 50% of Reference                | Reference                        | 131.2                           | -0.2                              | -0.1                          | -232.0                                    |
| Reference                          | 0% of Reference                 | Reference                        | 131.1                           | 0.0                               | 0.0                           | 1'296.0                                   |
| 200% of Reference                  | 50% of Reference                | Reference                        | 125.7                           | 5.3                               | 4.1                           | 388.6                                     |
| 200% of Reference                  | 0% of Reference                 | Reference                        | 125.8                           | 5.2                               | 4.0                           | 377.9                                     |
| Reference                          | Reference                       | 50% of Reference                 | 116.0                           | 15.0                              | 11.4                          | 394.1                                     |
| Reference                          | Reference                       | 0% of Reference                  | 100.1                           | 30.9                              | 23.6                          | 391.8                                     |
| 200% of Reference                  | Reference                       | 50% of Reference                 | 112.1                           | 18.9                              | 14.4                          | 392.8                                     |
| 200% of Reference                  | Reference                       | 0% of Reference                  | 99.8                            | 31.3                              | 23.9                          | 396.2                                     |

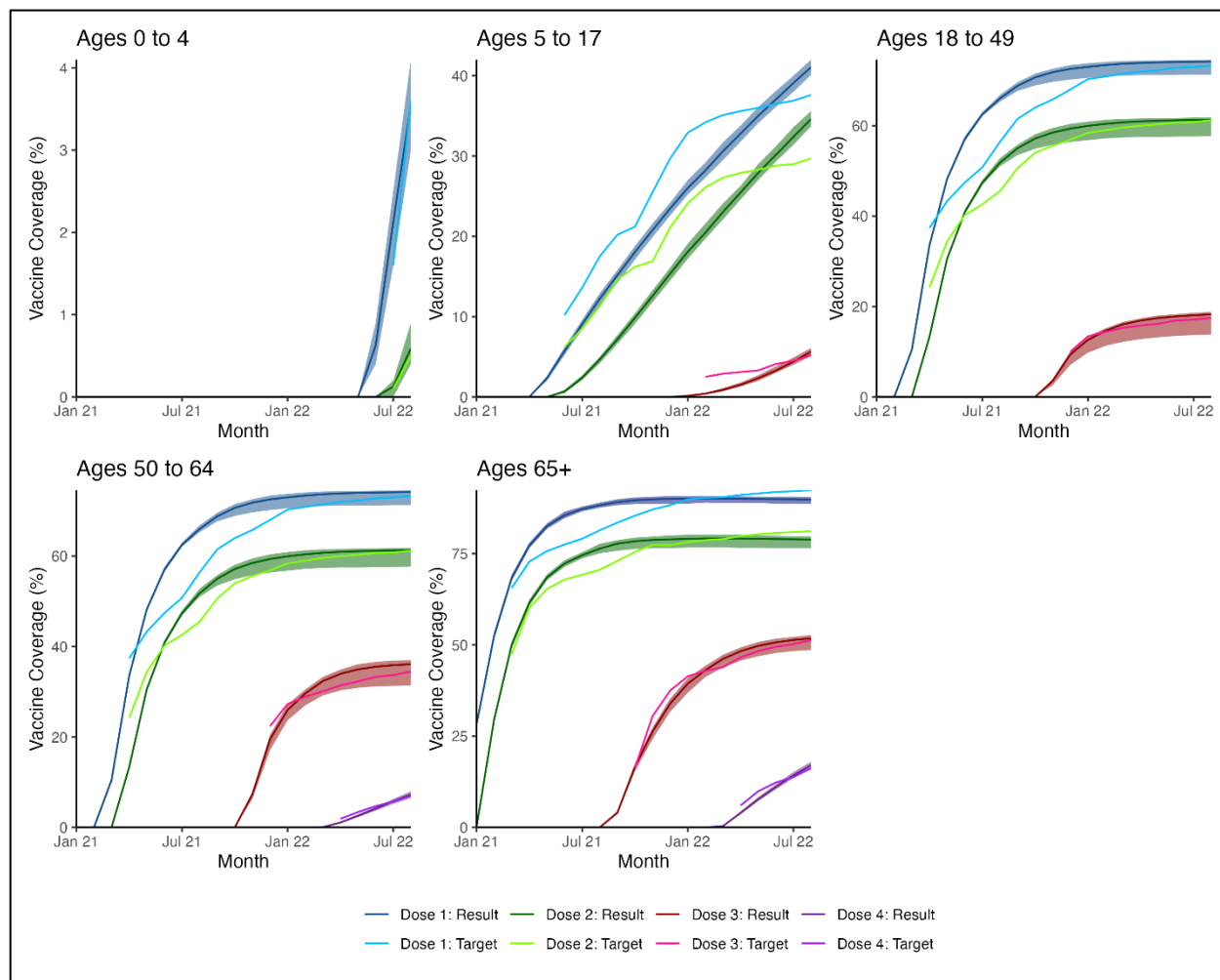
**Table 4. Overall death rate and deaths averted by end of simulation, for select scenarios.** Green indicates fewer deaths than the reference level and orange indicates more. Corresponding 50% simulation intervals are available in the Appendix in Table S5.

| Scenario                           |                                 |                                  | Total Deaths per 100'000 PD | Deaths Averted per 100'000 PD | Percent of Deaths Averted | Deaths Averted per Addtl. 1'000 Doses |
|------------------------------------|---------------------------------|----------------------------------|-----------------------------|-------------------------------|---------------------------|---------------------------------------|
| <i>Hospitalization Nudge Prob.</i> | <i>Breakthrough Nudge Prob.</i> | <i>Miscellaneous Nudge Prob.</i> | <i>n</i>                    | <i>n</i>                      | %                         | <i>n</i>                              |
| Reference                          | Reference                       | Reference                        | 0.363                       | -                             | -                         | -                                     |
| 200% of Reference                  | Reference                       | Reference                        | 0.344                       | 0.018                         | 5.1                       | 1.4                                   |
| Reference                          | 50% of Reference                | Reference                        | 0.364                       | -0.002                        | -0.4                      | 9.2                                   |
| Reference                          | 0% of Reference                 | Reference                        | 0.360                       | 0.003                         | 0.7                       | 10.3                                  |
| 200% of Reference                  | 50% of Reference                | Reference                        | 0.346                       | 0.017                         | 4.6                       | 1.3                                   |
| 200% of Reference                  | 0% of Reference                 | Reference                        | 0.342                       | 0.020                         | 5.6                       | 1.4                                   |
| Reference                          | Reference                       | 50% of Reference                 | 0.305                       | 0.058                         | 15.9                      | 1.5                                   |
| Reference                          | Reference                       | 0% of Reference                  | 0.254                       | 0.108                         | 29.8                      | 1.4                                   |
| 200% of Reference                  | Reference                       | 50% of Reference                 | 0.303                       | 0.060                         | 16.5                      | 1.2                                   |
| 200% of Reference                  | Reference                       | 0% of Reference                  | 0.250                       | 0.112                         | 31.0                      | 1.4                                   |

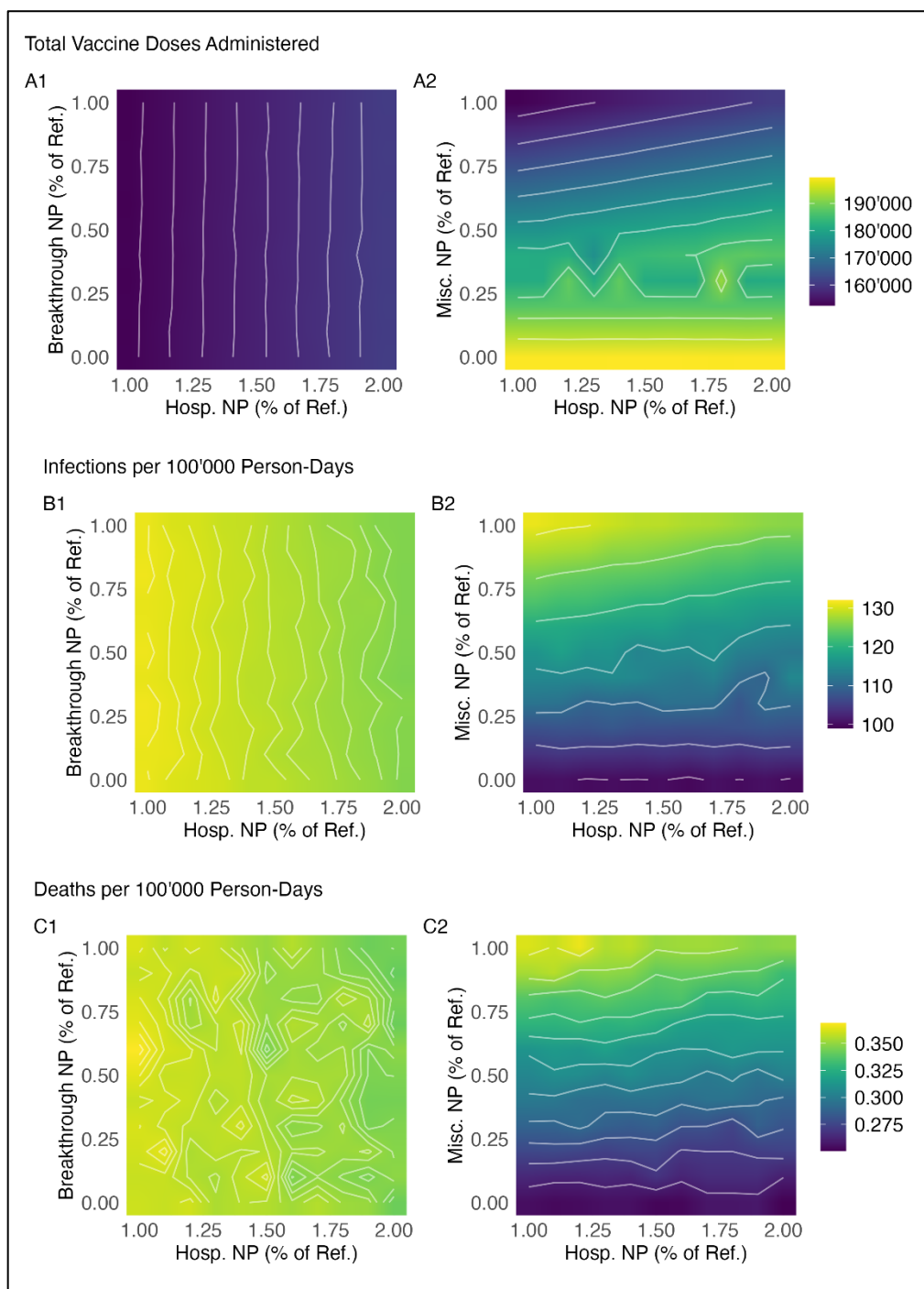
**Figure 1. Model calibration results for cases, hospitalizations, and deaths.** The reference model was calibrated to (1) an estimate of the total number of incident SARS-CoV-2 infections, (2) the reported number of confirmed COVID-19-related hospital admissions, and (3) the reported number of confirmed COVID-19-related deaths, all per 100'000 persons in Georgia per month.



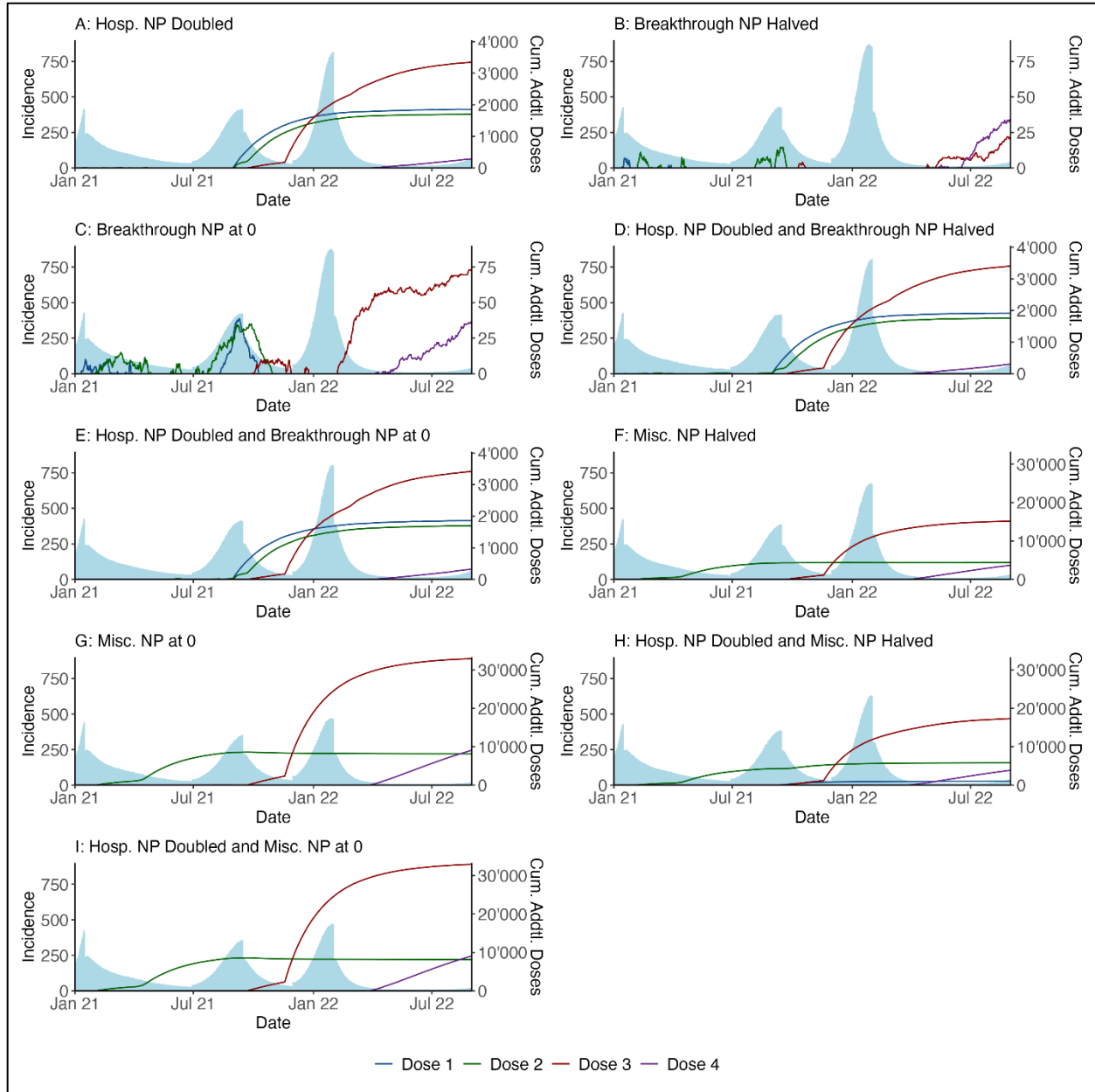
**Figure 2. Model calibration results for vaccine coverage.** The reference model was also calibrated to the reported vaccine coverage levels in Georgia by age group, dose, and month.



**Figure 3. Vaccines administered, incidence rate, and death rate by model scenario.** The hospitalization nudge probability (Hosp. NP) was increased from 100% to 200% of its reference value, the breakthrough nudge probability (Breakthrough NP) was decreased from 100% to 0% of its reference value, and the miscellaneous nudge probabilities (Misc. NP) were decreased from 100% to 0% of their reference values, all in increments of 10%. For each parameter combination, the median number of vaccine doses administered per run, the median infection rate per 100'000 person-days, and the median disease-related death rate per 100'000 person-days across 128 runs are displayed.



**Figure 4. Epidemic curve vs. cumulative vaccines administered over time for select scenarios.** The blue regions represent the (median) incident infections by day across the full population of 100'000 nodes. The coloured lines represent the difference between the (median) cumulative number of vaccine doses administered across all age groups in the scenario of interest and the corresponding (median) number from the reference scenario, as of each point in time. Note that the secondary y-axes differ across panels.





## REFERENCES

1. Suthar, A. B., Wang, J., Seffren, V., Wiegand, R. E., Griffing, S., & Zell, E. (2022). Public health impact of covid-19 vaccines in the US: observational study. *BMJ*, 377, e069317. <https://doi.org/10.1136/bmj-2021-069317>
2. Baden, L. R., El Sahly, H. M., Essink, B., Kotloff, K., Frey, S., Novak, R., Diemert, D., Spector, S. A., Roupheal, N., Creech, C. B., McGettigan, J., Khetan, S., Segall, N., Solis, J., Brosz, A., Fierro, C., Schwartz, H., Neuzil, K., Corey, L., Gilbert, P., ... COVE Study Group (2021). Efficacy and Safety of the mRNA-1273 SARS-CoV-2 Vaccine. *The New England Journal of Medicine*, 384(5), 403–416. <https://doi.org/10.1056/NEJMoa2035389>
3. Moulia, D. L., Wallace, M., Roper, L. E., Godfrey, M., Rosenblum, H. G., Link-Gelles, R., Britton, A., Daley, M. F., Meyer, S., Fleming-Dutra, K. E., Oliver, S. E., & Twentyman, E. (2023). Interim Recommendations for Use of Bivalent mRNA COVID-19 Vaccines for Persons Aged ≥6 Months - United States, April 2023. *Morbidity and Mortality Weekly Report*, 72(24), 657–662. <https://doi.org/10.15585/mmwr.mm7224a3>
4. Centers for Disease Control and Prevention. (2021, May 24). *Covid-19 vaccinations in the United States, jurisdiction*. Retrieved from <https://data.cdc.gov/Vaccinations/COVID-19-Vaccinations-in-the-United-States-Jurisdiction/uns-k-b7fc>
5. Bendetson, J., Swann, M. C., Lozano, A., West, J., Hanlon, A. L., Crandell, I., Jatta, M., Schlepner, C. J., & Baffoe-Bonnie, A. (2023). Deepening Our Understanding of COVID-19 Vaccine Decision-Making amongst Healthcare Workers in Southwest Virginia, USA Using Exploratory and Confirmatory Factor Analysis. *Vaccines*, 11(3), 556. <https://doi.org/10.3390/vaccines11030556>
6. Dubé, É., Ward, J. K., Verger, P., & MacDonald, N. E. (2021). Vaccine Hesitancy, Acceptance, and Anti-Vaccination: Trends and Future Prospects for Public Health. *Annual review of public health*, 42, 175–191. <https://doi.org/10.1146/annurev-publhealth-090419-102240>
7. Aguolu, O. G., Willebrand, K., Elharake, J. A., Qureshi, H. M., Kiti, M. C., Liu, C. Y., Restrepo Mesa, A., Nelson, K., Jenness, S., Melegaro, A., Ahmed, F., Yildirim, I., Malik, F. A., Lopman, B., & Omer, S. B. (2022). Factors influencing the decision to receive seasonal influenza vaccination among US corporate non-healthcare workers. *Human vaccines & immunotherapeutics*, 18(6). <https://doi.org/10.1080/21645515.2022.2122379>
8. Cucciniello, M., Pin, P., Imre, B., Porumbescu, G. A., & Melegaro, A. (2022). Altruism and vaccination intentions: Evidence from behavioral experiments. *Social Science & Medicine*, 292. <https://doi.org/10.1016/j.socscimed.2021.114195>
9. Hamel, L., Lopes, L., Sparks, G., Kirzinger, A., Kearney, A., Stokes, M., & Brodie, M. (2021, September 28). *KFF COVID-19 Vaccine Monitor: September 2021*. Kaiser Family Foundation. Retrieved from <https://www.kff.org/coronavirus-covid-19/poll-finding/kff-covid-19-vaccine-monitor-september-2021/>
10. Leong, C., Jin, L., Kim, D., Kim, J., Teo, Y. Y., & Ho, T. H. (2022). Assessing the impact of novelty and conformity on hesitancy towards COVID-19 vaccines using mRNA

- technology. *Communications medicine*, 2, 61. <https://doi.org/10.1038/s43856-022-00123-6>
11. Yadete, T., Batra, K., Netski, D. M., Antonio, S., Patros, M. J., & Bester, J. C. (2021). Assessing Acceptability of COVID-19 Vaccine Booster Dose among Adult Americans: A Cross-Sectional Study. *Vaccines*, 9(12), 1424. <https://doi.org/10.3390/vaccines9121424>
  12. de Albuquerque Veloso Machado, M., Roberts, B., Wong, B. L. H., van Kessel, R., & Mossialos, E. (2021). The Relationship Between the COVID-19 Pandemic and Vaccine Hesitancy: A Scoping Review of Literature Until August 2021. *Frontiers in public health*, 9, 747787. <https://doi.org/10.3389/fpubh.2021.747787>
  13. Bai F. (2021). Effect of population heterogeneity on herd immunity and on vaccination decision making process. *Journal of theoretical biology*, 526, 110795. <https://doi.org/10.1016/j.jtbi.2021.110795>
  14. Becchetti, L., Candio, P., & Salustri, F. (2021). Vaccine uptake and constrained decision making: The case of Covid-19. *Social science & medicine (1982)*, 289, 114410. <https://doi.org/10.1016/j.socscimed.2021.114410>
  15. Deka, A., Pantha, B., & Bhattacharyya, S. (2020). Optimal Management of Public Perceptions During A Flu Outbreak: A Game-Theoretic Perspective. *Bulletin of mathematical biology*, 82(11), 139. <https://doi.org/10.1007/s11538-020-00817-9>
  16. Xia, S., & Liu, J. (2014). A belief-based model for characterizing the spread of awareness and its impacts on individuals' vaccination decisions. *Journal of the Royal Society, Interface*, 11(94), 20140013. <https://doi.org/10.1098/rsif.2014.0013>
  17. Tversky, A., & Kahneman, D. (1974). Judgment under uncertainty: Heuristics and Biases. *Science*, 185(4157), 1124–1131. <https://doi.org/10.1126/science.185.4157.1124>
  18. Thaler, R. H., & Sunstein, C. R. (2008). *Nudge: Improving decisions about health, wealth and happiness*. Yale University Press.
  19. Papst, I., O'Keeffe, K. P., & Strogatz, S. H. (2022). Modeling the Interplay Between Seasonal Flu Outcomes and Individual Vaccination Decisions. *Bulletin of mathematical biology*, 84(3), 36. <https://doi.org/10.1007/s11538-021-00988-z>
  20. Walsh, M. M., Parker, A. M., Vardavas, R., Nowak, S. A., Kennedy, D. P., & Gidengil, C. A. (2020). The Stability of Influenza Vaccination Behavior Over Time: A Longitudinal Analysis of Individuals Across 8 Years. *Annals of behavioral medicine: a publication of the Society of Behavioral Medicine*, 54(10), 783–793. <https://doi.org/10.1093/abm/kaa017>
  21. Lu-Culligan, A., & Iwasaki, A. (2021, January 26). *The False Rumors About Vaccines That Are Scaring Women*. The New York Times. Retrieved from <https://www.nytimes.com/2021/01/26/opinion/covid-vaccine-rumors.html>
  22. Male V. (2021). Are COVID-19 vaccines safe in pregnancy? *Nature Reviews Immunology*, 21(4), 200–201. <https://doi.org/10.1038/s41577-021-00525-y>

23. Athey, S., Grabarz, K., Luca, M., & Wernerfelt, N. (2023). Digital public health interventions at scale: The impact of social media advertising on beliefs and outcomes related to COVID vaccines. *Proceedings of the National Academy of Sciences of the United States of America*, 120(5), e2208110120. <https://doi.org/10.1073/pnas.2208110120>
24. Gavish, N., Yaari, R., Huppert, A., & Katriel, G. (2022). Population-level implications of the Israeli booster campaign to curtail COVID-19 resurgence. *Science translational medicine*, 14(647), eabn9836. <https://doi.org/10.1126/scitranslmed.abn9836>
25. Wells, C. R., & Bauch, C. T. (2012). The impact of personal experiences with infection and vaccination on behaviour-incidence dynamics of seasonal influenza. *Epidemics*, 4(3), 139–151. <https://doi.org/10.1016/j.epidem.2012.06.002>
26. Gog, J. R., Hill, E. M., Danon, L., & Thompson, R. N. (2021). Vaccine escape in a heterogeneous population: Insights for SARS-COV-2 from a simple model. *Royal Society Open Science*, 8(7). <https://doi.org/10.1098/rsos.210530>
27. Kim, J. E., Lee, S., & Kim, H. S. (2022). Booster Vaccination Strategies for "Living With COVID-19". *Frontiers in public health*, 10, 896713. <https://doi.org/10.3389/fpubh.2022.896713>
28. Chen, Y., Klein, S. L., Garibaldi, B. T., Li, H., Wu, C., Osevala, N. M., Li, T., Margolick, J. B., Pawelec, G., & Leng, S. X. (2021). Aging in COVID-19: Vulnerability, immunity and intervention. *Ageing research reviews*, 65, 101205. <https://doi.org/10.1016/j.arr.2020.101205>
29. Hussain, A., Bhowmik, B., & do Vale Moreira, N. C. (2020). COVID-19 and diabetes: Knowledge in progress. *Diabetes research and clinical practice*, 162, 108142. <https://doi.org/10.1016/j.diabres.2020.108142>
30. Wilk, A. J., Rustagi, A., Zhao, N. Q., Roque, J., Martínez-Colón, G. J., McKechnie, J. L., Ivison, G. T., Ranganath, T., Vergara, R., Hollis, T., Simpson, L. J., Grant, P., Subramanian, A., Rogers, A. J., & Blish, C. A. (2020). A single-cell atlas of the peripheral immune response in patients with severe COVID-19. *Nature medicine*, 26(7), 1070–1076. <https://doi.org/10.1038/s41591-020-0944-y>
31. Jenness, S. M., Goodreau, S. M., & Morris, M. (2018). EpiModel: An R Package for Mathematical Modeling of Infectious Disease over Networks. *Journal of statistical software*, 84, 8. <https://doi.org/10.18637/jss.v084.i08>
32. National Center for Health Statistics. (2021). Bridged-Race Population Estimates. CDC WONDER Online Database. Retrieved from <http://wonder.cdc.gov/bridged-race-v2020.html>
33. Nelson, K. N., Siegler, A. J., Sullivan, P. S., Bradley, H., Hall, E., Luisi, N., Hipp-Ramsey, P., Sanchez, T., Shioda, K., & Lopman, B. A. (2022). Nationally representative social contact patterns among U.S. adults, August 2020-April 2021. *Epidemics*, 40, 100605. <https://doi.org/10.1016/j.epidem.2022.100605>

34. Prem, K., Cook, A. R., & Jit, M. (2017). Projecting social contact matrices in 152 countries using contact surveys and demographic data. *PLoS computational biology*, 13(9), e1005697. <https://doi.org/10.1371/journal.pcbi.1005697>
35. U.S. Census Bureau. (2020). *Table H2. Households, by Type, Age of Members, Region of Residence, and Age of Householder: 2020*. U.S. Department of Commerce. Retrieved from <https://www2.census.gov/programs-surveys/demo/tables/families/2020/cps-2020/tabh2-all.xls>
36. U.S. Census Bureau. (201). *U.S. Census Bureau QuickFacts: Georgia*. U.S. Department of Commerce. Retrieved from <https://www.census.gov/quickfacts/fact/table/GA/PST045221>
37. U.S. Census Bureau. (2021). *Table C4. Children with Grandparents by Presence of Parents, Sex, and Selected Characteristics: 2021*. U.S. Department of Commerce. Retrieved from <https://www2.census.gov/programs-surveys/demo/tables/families/2021/cps-2021/tabc4-all.xls>
38. Kelly, B. J., Southwell, B. G., McCormack, L. A., Bann, C. M., MacDonald, P. D. M., Frasier, A. M., Bevc, C. A., Brewer, N. T., & Squiers, L. B. (2021). Predictors of willingness to get a COVID-19 vaccine in the U.S. *BMC infectious diseases*, 21(1), 338. <https://doi.org/10.1186/s12879-021-06023-9>
39. Nikolovski, J., Koldijk, M., Weverling, G. J., Spertus, J., Turakhia, M., Saxon, L., Gibson, M., Whang, J., Sarich, T., Zambon, R., Ezeanochie, N., Turgiss, J., Jones, R., Stoddard, J., Burton, P., & Navar, A. M. (2021). Factors indicating intention to vaccinate with a COVID-19 vaccine among older U.S. adults. *PloS one*, 16(5), e0251963. <https://doi.org/10.1371/journal.pone.0251963>
40. Chrissian, A. A., Oyoyo, U. E., Patel, P., Lawrence Beeson, W., Loo, L. K., Tavakoli, S., & Dubov, A. (2022). Impact of COVID-19 vaccine-associated side effects on health care worker absenteeism and future booster vaccination. *Vaccine*, 40(23), 3174–3181. <https://doi.org/10.1016/j.vaccine.2022.04.046>
41. Dzedzic, A., Issa, J., Hussain, S., Tanasiewicz, M., Wojtyczka, R., Kubina, R., Konwinska, M. D., & Riad, A. (2022). COVID-19 vaccine booster hesitancy (VBH) of healthcare professionals and students in Poland: Cross-sectional survey-based study. *Frontiers in public health*, 10, 938067. <https://doi.org/10.3389/fpubh.2022.938067>
42. Centers for Disease Control and Prevention. (2021, October 29). *Science brief: SARS-COV-2 infection induced and vaccine-induced immunity*. Retrieved from <https://www.cdc.gov/coronavirus/2019-ncov/science/science-briefs/vaccine-induced-immunity.html>
43. Georgia Department of Public Health. *Georgia COVID-19 Dashboard*. Retrieved from <https://ga-covid19.ondemand.sas.com/>
44. Institute for Health Metrics and Evaluation, University of Washington. (2022, December 16). *IHME: Covid-19 Projections*. Retrieved from <https://covid19.healthdata.org/united-states-of-america>

45. Davies, N. G., Kucharski, A. J., Eggo, R. M., Gimma, A., Edmunds, W. J., & Centre for the Mathematical Modelling of Infectious Diseases COVID-19 working group (2020). Effects of non-pharmaceutical interventions on COVID-19 cases, deaths, and demand for hospital services in the UK: a modelling study. *The Lancet. Public health*, 5(7), e375–e385. [https://doi.org/10.1016/S2468-2667\(20\)30133-X](https://doi.org/10.1016/S2468-2667(20)30133-X)
46. Madewell, Z. J., Yang, Y., Longini, I. M., Jr, Halloran, M. E., & Dean, N. E. (2022). Household Secondary Attack Rates of SARS-CoV-2 by Variant and Vaccination Status: An Updated Systematic Review and Meta-analysis. *JAMA network open*, 5(4), e229317. <https://doi.org/10.1001/jamanetworkopen.2022.9317>
47. Harrington, K. R. V. (2022). *Covid-19 Mitigation Strategies: Implications for Pandemic Control and the Incidence of Drug-Resistant Tuberculosis* (dissertation).
48. Xin, H., Li, Y., Wu, P., Li, Z., Lau, E. H. Y., Qin, Y., Wang, L., Cowling, B. J., Tsang, T. K., & Li, Z. (2022). Estimating the Latent Period of Coronavirus Disease 2019 (COVID-19). *Clinical infectious diseases: an official publication of the Infectious Diseases Society of America*, 74(9), 1678–1681. <https://doi.org/10.1093/cid/ciab746>
49. Conlon, A., Ashur, C., Washer, L., Eagle, K. A., & Hofmann Bowman, M. A. (2021). Impact of the influenza vaccine on COVID-19 infection rates and severity. *American journal of infection control*, 49(6), 694–700. <https://doi.org/10.1016/j.ajic.2021.02.012>
50. Georgia Department of Public Health, Office of Health Indicators for Planning. *OASIS Web Query - Mortality Statistics*. Online Analytical Statistical Information System (OASIS). Retrieved from <https://oasis.state.ga.us/oasis/WebQuery/qryMortality.aspx>
51. Centers for Disease Control and Prevention. *CDC Covid Data tracker*. Retrieved from <https://covid.cdc.gov/covid-data-tracker/#hospital-capacity>
52. Centers for Disease Control and Prevention. (2022, June 18). *CDC recommends COVID-19 vaccines for young children*. Retrieved from <https://www.cdc.gov/media/releases/2022/s0618-children-vaccine.html>
53. Mandavilli, A. (2021, May 12). *C.D.C. Advisers Endorse Pfizer Vaccine for Children Ages 12 to 15*. The New York Times. Retrieved from <https://www.nytimes.com/2021/05/12/health/coronavirus-vaccine-children.html>
54. Bluestein, G., Oliviero, H., & Stirgus, E. (2021, March 23). *All Georgia adults will be eligible for coronavirus vaccines starting Thursday*. Retrieved from <https://www.ajc.com/politics/S2TLG4G3CBDNJBUPPRROV5ROSI/>
55. Stirgus, E., Bluestein, G., & Trubey, J. S. (2021, March 10). *Georgia to allow 55+ and 'high-risk' residents to get coronavirus vaccine*. Retrieved from <https://www.ajc.com/politics/PO4VMZ3Q3NA25LPQB6CNDW7PAA/>
56. Peck, S. (2021, January 11). *Georgia Expands COVID-19 Vaccine Availability to Include People Age 65 or Older, Northeast Health District Opens Drive-Through Vaccination Clinic*. Northeast Health District. Retrieved from <https://publichealthathens.com/wp/wp-content/uploads/2021/01/COVID-19-Vaccination-Drive-Through-Release-01112021.pdf>



57. U.S. Food and Drug Administration. (2022). *Coronavirus (COVID-19) Update: FDA Takes Multiple Actions to Expand Use of Pfizer-BioNTech COVID-19 Vaccine*. Retrieved from <https://www.fda.gov/news-events/press-announcements/coronavirus-covid-19-update-fda-takes-multiple-actions-expand-use-pfizer-biontech-covid-19-vaccine>
58. Centers for Disease Control and Prevention. (2021, November 19). *CDC Expands Eligibility for COVID-19 Booster Shots to All Adults*. Retrieved from <https://www.cdc.gov/media/releases/2021/s1119-booster-shots.html>
59. U.S. Food and Drug Administration. (2021, September 22). *FDA authorizes booster dose of Pfizer-BioNTech COVID-19 vaccine for certain populations*. Retrieved from <https://www.fda.gov/news-events/press-announcements/fda-authorizes-booster-dose-pfizer-biontech-covid-19-vaccine-certain-populations>
60. U.S. Food and Drug Administration. (2022, March 29). *Coronavirus (COVID-19) update: FDA authorizes second booster dose of two COVID-19 vaccines for older and immunocompromised individuals*. Retrieved from <https://www.fda.gov/news-events/press-announcements/coronavirus-covid-19-update-fda-authorizes-second-booster-dose-two-covid-19-vaccines-older-and>
61. Pilishvili, T., Gierke, R., Fleming-Dutra, K. E., Farrar, J. L., Mohr, N. M., Talan, D. A., Krishnadasan, A., Harland, K. K., Smithline, H. A., Hou, P. C., Lee, L. C., Lim, S. C., Moran, G. J., Krebs, E., Steele, M. T., Beiser, D. G., Faine, B., Haran, J. P., Nandi, U., ... Schrag, S. J. (2021). Effectiveness of mRNA COVID-19 vaccine among U.S. Health Care Personnel. *New England Journal of Medicine*, 385(25). <https://doi.org/10.1056/nejmoa2106599>
62. Barda, N., Dagan, N., Cohen, C., Hernán, M. A., Lipsitch, M., Kohane, I. S., Reis, B. Y., & Balicer, R. D. (2021). Effectiveness of a third dose of the BNT162b2 mRNA COVID-19 vaccine for preventing severe outcomes in Israel: an observational study. *Lancet (London, England)*, 398(10316), 2093–2100. [https://doi.org/10.1016/S0140-6736\(21\)02249-2](https://doi.org/10.1016/S0140-6736(21)02249-2)
63. Chung, H., He, S., Nasreen, S., Sundaram, M. E., Buchan, S. A., Wilson, S. E., Chen, B., Calzavara, A., Fell, D. B., Austin, P. C., Wilson, K., Schwartz, K. L., Brown, K. A., Gubbay, J. B., Basta, N. E., Mahmud, S. M., Righolt, C. H., Svenson, L. W., MacDonald, S. E., ... Kwong, J. C. (2021). Effectiveness of BNT162B2 and mRNA-1273 covid-19 vaccines against symptomatic SARS-COV-2 infection and severe COVID-19 Outcomes in Ontario, Canada: Test negative design study. *BMJ*. <https://doi.org/10.1136/bmj.n1943>