

# **Incidence and Clinical Parameters of HIV-1 Paradoxical and Unmasking Immune Reconstitution Syndrome in Antiretroviral Naïve Pregnant Women attending selected facilities in Kenya**

**John Muthuka K.**,<sup>1, 2, \*</sup> **Everlyn Nyamai M.**,<sup>3\*</sup> Oluoch Kelly J.,<sup>3</sup> Maibvise Charles<sup>4</sup> and Rosemary Nabaweesi,<sup>5</sup>

<sup>1</sup>Department of Community Health & Health Promotion, Kenya Medical Training College, Nairobi, Kenya

<sup>2</sup>College of Health Sciences, KEMRI graduate School, Nairobi, Kenya

<sup>3</sup>Kenya Medical Training College, Nairobi, Kenya

<sup>4</sup>University of Eswatini

<sup>5</sup>Meharry Medical College, Nashville, TN, USA

## Background

Following ART initiation, a spectrum of HIV-associated immune reconstitution inflammatory syndrome (IRIS), as opportunistic infections occurs, presenting as either paradoxical or unmasking IRIS. There are benefits of ART for maternal health and prevention of perinatal transmission, however, some risks may be possible with IRIS. The study sought to estimate the incidence, compare survival times to, and investigate the baseline clinical predictors of HIV-1 paradoxical and unmasking IRIS as well as identify the homogeneity defined by combinations of specific covariates in Art Naïve Pregnant Women.

## Methods

A prospective, active records observational study [P609/08/-2018-E] was conducted among ART-naive pregnant women attending antenatal care unit (ANCu) from Kenyatta National and *Mbagathi* Hospitals in Kenya. Participants enrolled were between the ages of 20 - 49 years with a clear documentation of HIV status and, an independent review committee adjudicated IRIS diagnosis. Associations between baseline pre-ART characteristics, biomarkers, and IRIS diagnosis were assessed with Cox models. Decision-tree analysis was finally performed to identify homogeneity defined by combinations of specific parameters.

## Results

Of the initial total 532 women, (24.8%) (n=133) participants experienced IRIS by the 12<sup>th</sup> week post ART initiation, 27.3 % (n= 36) and 72.7% (n = 96) paradoxical and unmasking respectively. Maternal Basal Metabolic Index (MBMI) of (25 -29.9) significantly predicted unmasking IRIS [(β)=0.907, Wald test (β<sup>^</sup>) = 6.550, (HR = 2.478, 95% C.I 1.237 – 4.965, P = 0.010] same case to gravidity of above 5 [(β)=0.743, P = 0.338] while that of 2-3 predicted paradoxical IRIS [(β)= - 0.542, P = 0.037. WHO-HIV clinical stage 1 and 2 showed a link towards paradoxical IRIS, [(β)= - 0.111 and (β)= - 0.276 (P < 0.05)], clinical stage 4 with unmasking IRIS [(β)= 0.047, HR = 1.048, P = 0.941]. CD4 count > 500 cells/mm<sup>3</sup> skewed towards unmasking IRIS diagnosis [(β)= 0.192, HR = 1.211, P = 0.416], while RNA-HIV viral loads > 50 copies/ml towards paradoxical IRIS [(β)= - 0.199, HR = 0.820, P = 0.360. On decision tree analysis, 76% (P = 0.729) of ART naïve pregnant women aged 20-29 and 40-49 years of age presented with unmasking IRIS and a gravidity of 4-5 and 1 predicted 88% (P = 0.045) unmasking IRIS as compared to that of 2-3 62 % (P = 0.045).

## Conclusion

Unmasking IRIS was the common type of IRIS post-ART initiation. Maternal BMI and RNA-HIV viral loads level predicted paradoxical IRIS while the baseline CD4 count and WHO- HIV clinical infection stage 1 and 4 were associated with unmasking IRIS. Gravidities of 1 and 4 – 5 predicted unmasking IRIS.

## Background

Immune reconstitution inflammatory syndrome (IRIS) is a clinical complication of some patients infected with the human immunodeficiency virus (HIV) after starting antiretroviral therapy (ART). IRIS is characterized by the release of proinflammatory cytokines and tissue inflammation, and it is related to a well-identified coinfection<sup>1</sup>

All pregnant women with HIV should initiate antiretroviral therapy (ART) as early in pregnancy as possible, regardless of their HIV RNA level or CD4 T lymphocyte count, to maximize their health and prevent perinatal HIV transmission and secondary sexual transmission<sup>2</sup>. One of the goals of antiretroviral therapy (ART) during pregnancy is to achieve and maintain HIV viral suppression to undetectable levels (HIV RNA <50 copies/mL) to reduce the risk of perinatal transmission<sup>2</sup>. Following ART initiation, there occurs a spectrum of HIV-associated IRIS described in several forms of opportunistic infections<sup>3</sup>. This may present as paradoxical or unmasking immune reconstitution inflammatory syndrome (IRIS); "unmasking" IRIS being the flare-up of an underlying, previously undiagnosed infection soon after ART is started while "paradoxical" IRIS being the worsening of a previously treated infection after ART is started<sup>4</sup>.

Despite the known incidence of IRIS in general population<sup>5-8</sup> and relative knowledge on indirect effect of ART in form of IRIS<sup>9</sup>, the incidence estimation by type of IRIS is not well documented in composite apart from in the nature of opportunistic infections<sup>10-12</sup>. Earlier antiretroviral therapy (ART) initiation and continuation postpartum in PWWH lowers infection rates and mortality, but pregnancy remains an important risk factor for morbidity and mortality even during suppressive ART<sup>13-16</sup>. The physiologic state of pregnancy, independent of HIV, leads to many immunoregulatory changes that help maintain the fetal allograft but may increase susceptibility to infections, including tuberculosis (TB)<sup>17-20</sup>. A report has demonstrated this increased risk of TB in PWWH, particularly postpartum<sup>21</sup>. Within 6 months of ART, 97 (19.2%) participants developed IRIS and 31 (6.5%) died. A prospective international study established that, in general, persons with lower hemoglobin at baseline were at higher IRIS risk (hazard ratio [HR], 1.2; P = .004)<sup>22</sup>, a fact that can be relative to other clinical indicators.

Studies have demonstrated higher incidence IRIS among persons living with HIV with a low CD4<sup>+</sup> T cell count at the baseline<sup>23,24</sup>. Although several aspects of IRIS pathogenesis remain unclear,

two clinical parameters have been related to IRIS development: (1) severe CD4+ lymphopenia and (2) opportunistic diseases that lead to a dysregulated immune response (usually characterized by persistent T cell activation, which favors T cell exhaustion)<sup>25,26</sup>. IRIS is diagnosed using the criteria from the International Network for the Study of HIV-associated IRIS (INSHI)<sup>11</sup>. Several studies have focused on identifying biomarkers for IRIS prognosis or diagnosis, but mainly on tuberculosis (TB)-IRIS<sup>1,27</sup>.

This study was conducted to identify clinical predictors inherent to a specific type of IRIS, either paradoxical or unmasking among as well as looking in to the hazard rates associated with such predictors towards IRIS diagnosis among ART naïve pregnant women. Furthermore, decision tree analysis was conducted to explore the key predictive factors at baseline that can portray a homogenous effect on either paradoxical or unmasking IRIS diagnosis.

## **Methods**

### **Study Design**

A prospective, observational and active records study [P609/08/-2018-E] was conducted between May, 2019 and March, 2020. HIV-positive confirmed, ART-naive pregnant women attending antenatal care unit (ANCu) from the first trimester and not later than one-month post-conception. The cohort was then initiated to ART as a single population at baseline. IRIS as the primary outcome was assessed and confirmed within the first 12 weeks using International Network for the Study of HIV-associated IRIS (INSHI) and experts' opinions as per IRIS case definitions was done to ensure internal validity was maintained, while secondary outcome was any form of adverse pregnancy outcome (APO) from the end of first trimester to post-delivery period.

Baseline clinical and demographic characteristics were recorded among these of pregnant women visiting at 2 health facilities in Kenya, namely, Kenyatta National and *Mbagathi* Hospitals. Inclusion criteria were age  $\geq 20$  years, documentation of HIV status, ART naïve, basal metabolic index, CD4 in cells/ $\mu\text{L}$ , and HIV-RNA (log<sub>10</sub> copies/mL). Exclusion criteria were known critical conditions and any severe threatening events in pregnancy. Consecutive eligible pregnant women were enrolled including the utilization of their inherent active records. The protocol was approved by the ethics committees of the participating facilities. Participants were followed through their

active records prospectively from ART initiation (week 0) to week 12. ART regimens and timing of initiation were chosen according to local treatment guidelines and clinicians' preferences. The primary objective was to estimate cumulative incidence of IRIS as well as by the type of IRIS (either unmasking or paradoxical) by week 12.

The clinical teams at study sites prospectively identified IRIS events and collected relevant clinical information that was presented to an endpoint review committee. The committee determined whether the events were consistent with IRIS using the following AIDS Clinical Trials Group IRIS definition criteria<sup>28</sup>. Evidence of ART initiation with resultant increase in CD4 count ( $\geq 50$  cells/ $\mu$ L or a  $\geq 2$ -fold rise) and/or virologic suppression ( $>0.5$  log<sub>10</sub> decrease in plasma HIV viremia), clinical presentation consistent with an infectious or inflammatory condition, and the absence of an alternative etiology such as the expected course of a previously recognized infection or side effects of medications.

## Statistical Methods

Descriptive univariate analysis considering IRIS cumulative incidence grouped by IRIS type was performed not ignoring censoring and to investigate the relationship between clinical characteristics with the type of IRIS among participants within the first phase of the study at 12 weeks after starting ART, a bivariate analysis was performed using Pearson-test for clinical parameters relative to IRIS type. For the baseline clinical indicators and time to a specific type of IRIS, multivariate Cox regression analysis with IRIS as the outcome was fitted, with censoring effect included prior to 12 weeks post ART initiation, using the *Survival* package in SPSS<sup>29</sup>. To explore further key relationship between baseline characteristics and IRIS type diagnosis, a decision tree analysis was performed.

## Results

A total of 532 HIV-infected, ART-naive pregnant women participants were screened with 143 diagnosed with IRIS recruited, of which 132 remained after exclusion of eleven (n=11) following lack of consensus on IRIS presentation at phase one of the study in the first trimester as well as other critical conditions. The 132 participants were enrolled at the 2 sites (90 Kenyatta National Hospital, and 41 in *Mbagathi* between August 2019 to May 2020. Majority of women (53%, n=70)

were between the ages of 30-39, 51% (n = 69, had a normal body mass index (18.5-24.9), and 80 (60%) were married. Most, 50% (n= 67) had a parity of 2-3. Over 50% (n = 73), were at the first stage of HIV infection as determined in WHO guidelines<sup>30</sup> and 5.3% (n = 7) had maternal anemia with 42% (n = 56) presenting with at least a symptom of an opportunistic infection.. Tenofovir alafenamide/emtricitabine (TAF/FTC) combination was started in 72% (n = 96) of the pregnant women initiated on ART while few, 5.3% (n=11) were put on tenofovir disoproxil fumarate/emtricitabine (TDF/FTC; *table 1*).

**Table1:** Baseline characteristics of ART naïve pregnant women at the first trimester

<b>Variable</b>		<b>Frequency</b>	<b>Percent</b>	<b>(%)</b>
<b>WHO-HIV Stage</b>	Primary	36	17.2	27.1
	Stage 1	73	34.9	54.9
	Stage 2	21	10.0	15.8
	Stage 3	3	1.4	2.3
<b>Opportunistic Infections</b>	Present	56	26.8	42.4
	Absent	76	36.4	57.6
<b>Maternal age (Years)</b>	20-29	40	19.1	30.1
	30-39	70	33.5	52.6
	40-49	23	11.0	17.3
<b>ART Combination</b>	(ABC/3TC) *	26	12.4	19.5
	(TAF/FTC)	96	12.4	72.2
	(TDF/FTC) *	11	5.3	8.3
<b>Maternal age</b>	20-29	40	19.1	30.1
	30-39	70	33.5	52.6
	40-49	23	11.0	17.3
<b>MBMI</b>	(< 18.5)	21	10.0	15.8
	(18.5-24.9)	69	33.0	51.9
	(25 -29.9)	35	16.7	26.3
	(> 30)	8	3.8	6.0
<b>Maternal anemia</b>	Present	7	3.3	5.3
	Absent	126	60.3	94.7
<b>Rhesus Factor</b>	Positive	116	55.5	87.2
	Negative	17	8.1	12.8
<b>Parity</b>	1	50	23.9	37.6
	2-3	67	32.1	50.4
	4-5	14	6.7	10.5
	>%	2	1.0	1.5
<b>Marital Status</b>	Single	3	1.4	2.3
	Separated	41	30.8	30.8
	Married	80	60.2	60.2
	Windowed	8	3.8	6

\*Abacavir/lamivudine (ABC/3TC) or either tenofovir alafenamide/emtricitabine (TAF/FTC) or tenofovir disoproxil fumarate/emtricitabine (TDF/FTC)

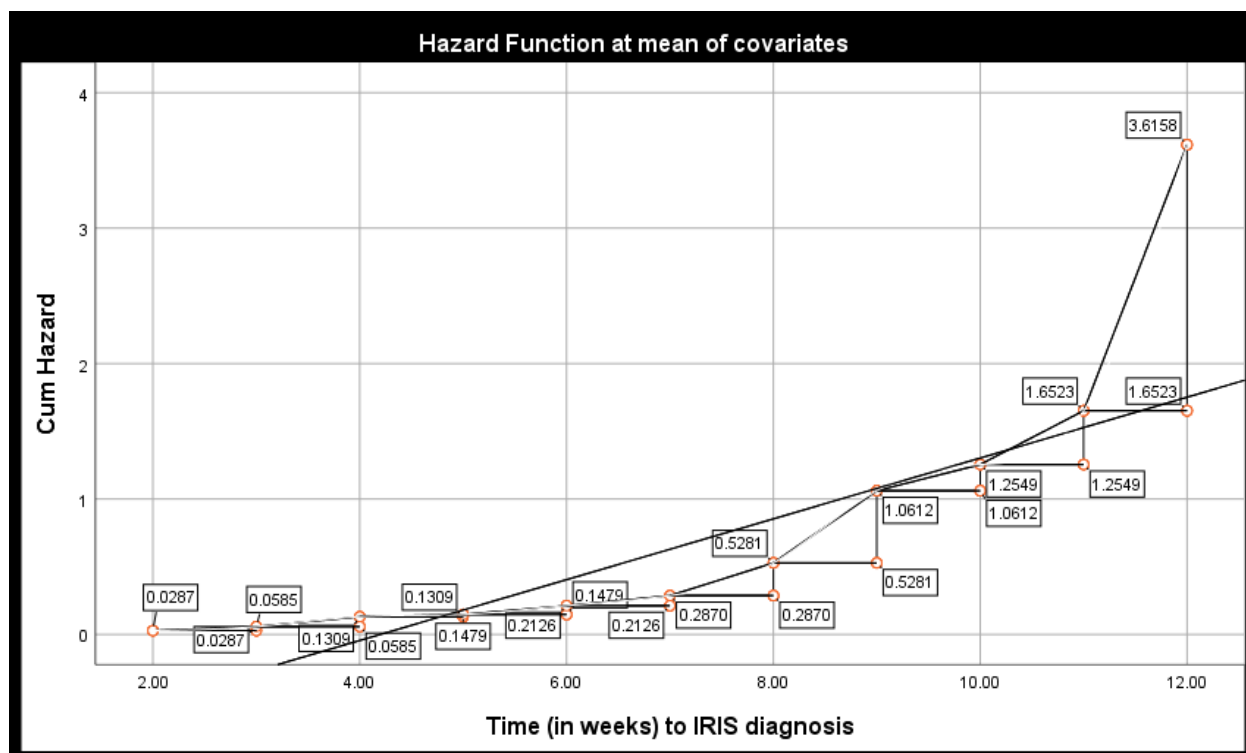
One hundred and thirty-two, (24.8%) participants experienced IRIS by the 12<sup>th</sup> week post ART initiation. The proportions of IRIS by type were 27.3 % (n= 36) and 72.7% (n = 96) paradoxical and unmasking respectively; *table 2*.

**Table 2: Cumulative incidence of paradoxical and unmasking IRIS**

IRIS Type	Frequency	Percent	Valid Percent	Cumulative Percent
<b>Paradoxical</b>	36	27.3	27.3	27.3
<b>Unmasking</b>	96	72.7	72.7	100.0
<b>Total</b>	132	100.0	100.0	

**Survival and hazard function at the mean of baseline clinical covariates**

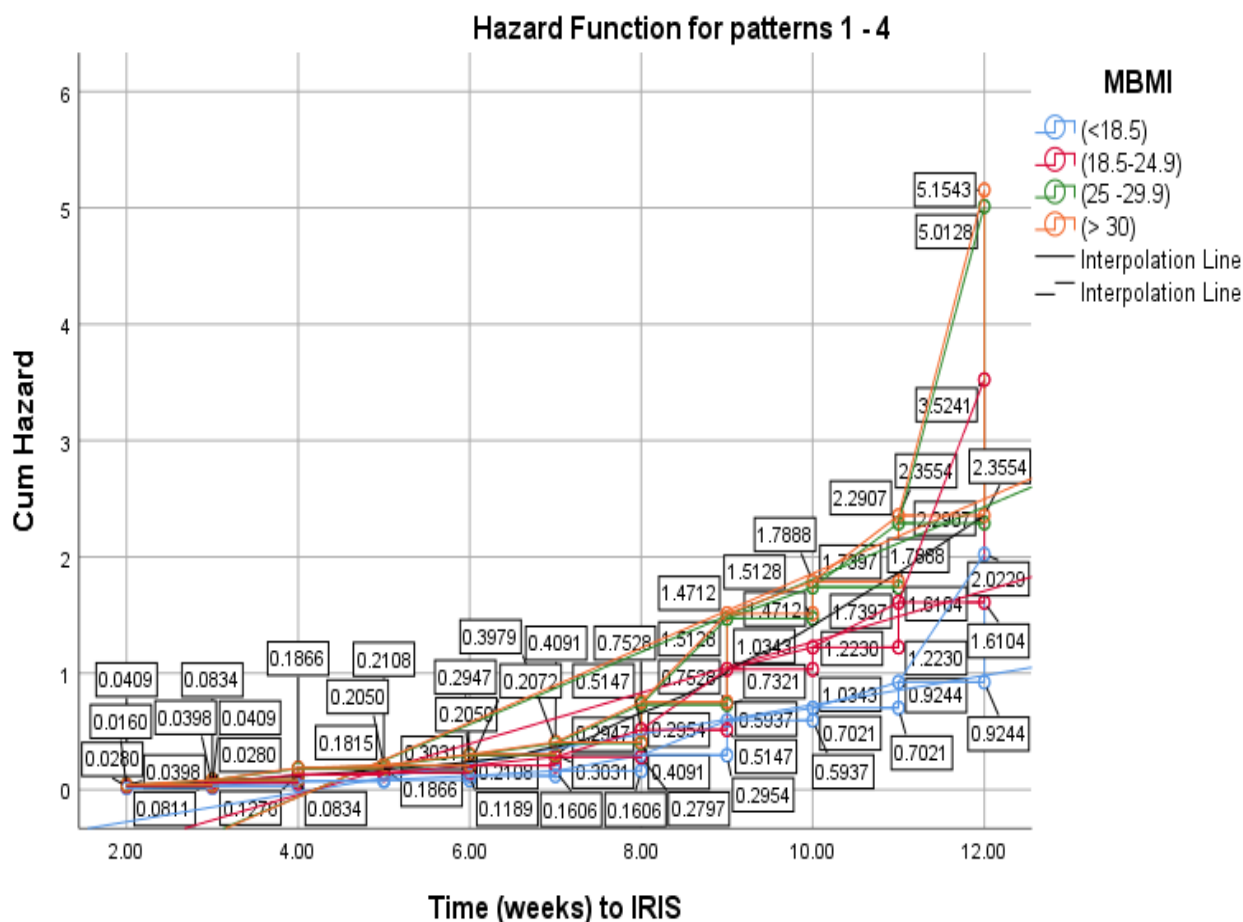
The total accumulated risk of experiencing IRIS symptoms as demonstrated by the cumulative hazard function evaluating all the clinical parameters increased with time more so from week 8 onwards to 12<sup>th</sup> week; *figure 1*.



**Figure 1:** Cumulative hazard for IRIS in general as shown by hazard functions for the clinical parameters

## Clinical parameters at baseline and association with paradoxical or unmasking IRIS

Clinical parameters at baseline following Cox-regression analysis demonstrated that, maternal Basal Metabolic Index (MBMI) of (25 -29.9) was statistically significant for unmasking IRIS as opposed to paradoxical IRIS with a positive regression coefficient [ $(\beta)=0.907$ , Wald test  $(\beta^{\wedge}) = 6.550$ , (HR = 2.478, 95% C.I 1.237 – 4.965, P = 0.010)]. Seemingly, although insignificant, MBMI > 30 had positive regression coefficient towards unmasking IRIS [ $(\beta)=0.935$ , P = 0.122]. In general, HR for IRIS increased with an increase in BMI levels; *figure 2*.

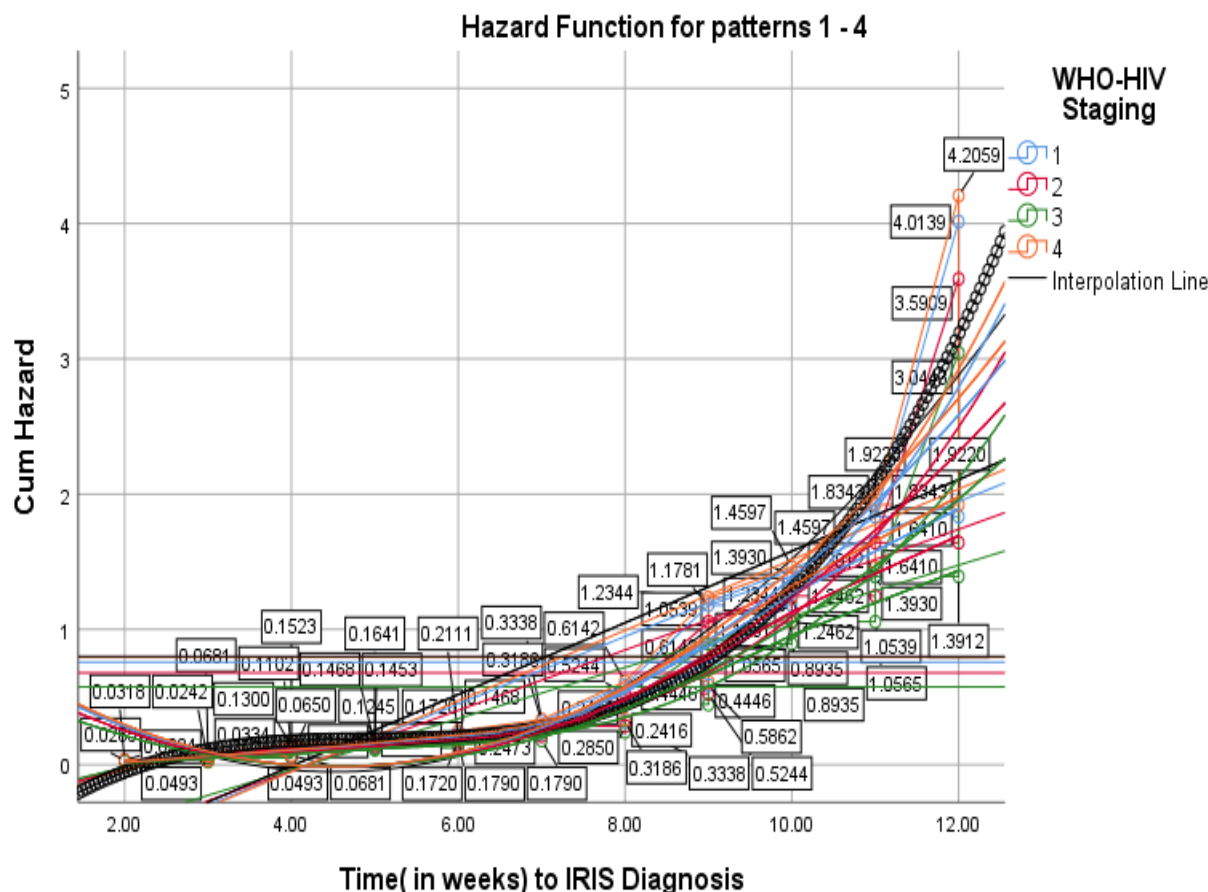


**Figure 2:** Hazard function for IRIS diagnosis by maternal basal metabolic index (MBMI)

Similarly, a parity of above 5 [ $(\beta)=0.743$ , P = 0.338] as opposed to those with a parity of below 5; parity of 2-3 [ $(\beta)= -0.542$ , P = 0.037] clearly predicted paradoxical IRIS as well as a parity of 3-4, however, statistically insignificant [ $(\beta)= -0.163$ , P = 0.850]. WHO-HIV Staging (clinical stage 1)



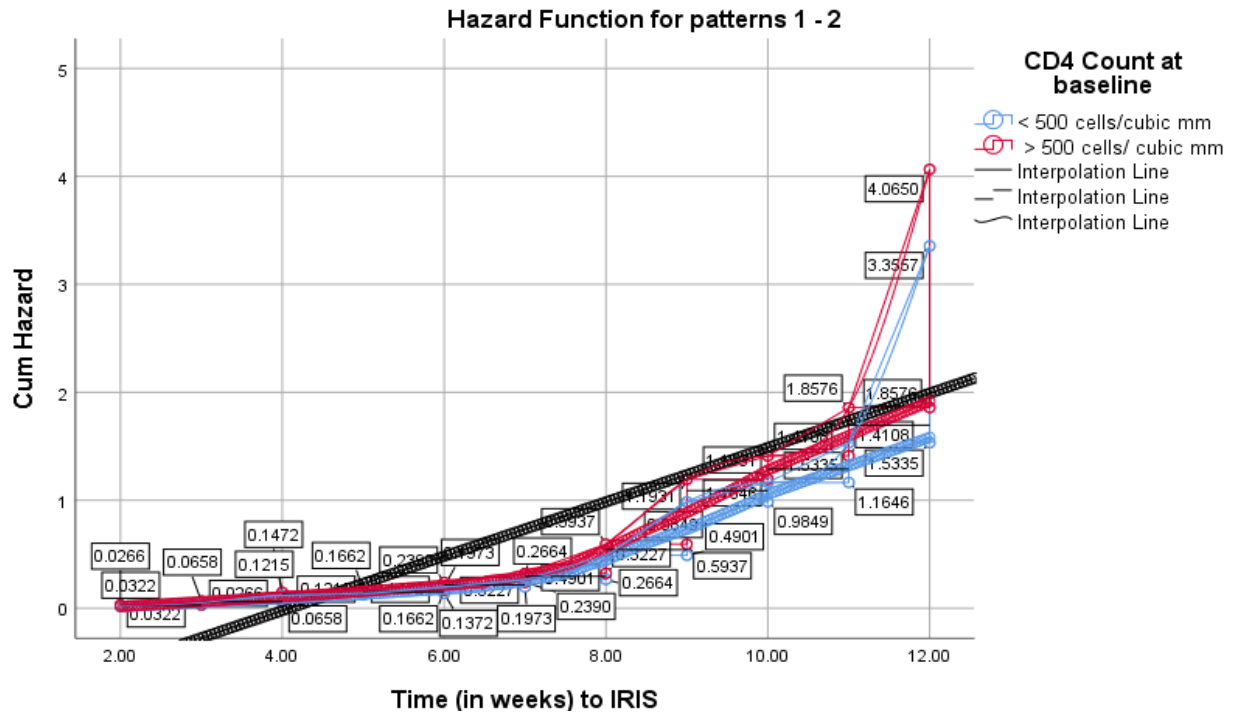
and (clinical stage 2) showed a negative regression coefficient ( $\beta$ )= - 0.111 and ( $\beta$ )= - 0.276 ( $P < 0.05$ ) respectively, a link towards paradoxical IRIS although statistically insignificant. WHO-HIV Staging (clinical stage 4) was positive with unmasking IRIS, statistically insignificant [ $(\beta) = 0.047$ , HR = 1.048,  $P = 0.941$ ]. The HR for unmasking IRIS was higher at primary and clinical stage 4 both with a hazard function of above 4.0 at the end of 12 weeks as opposed to other stages; *figure 3*.



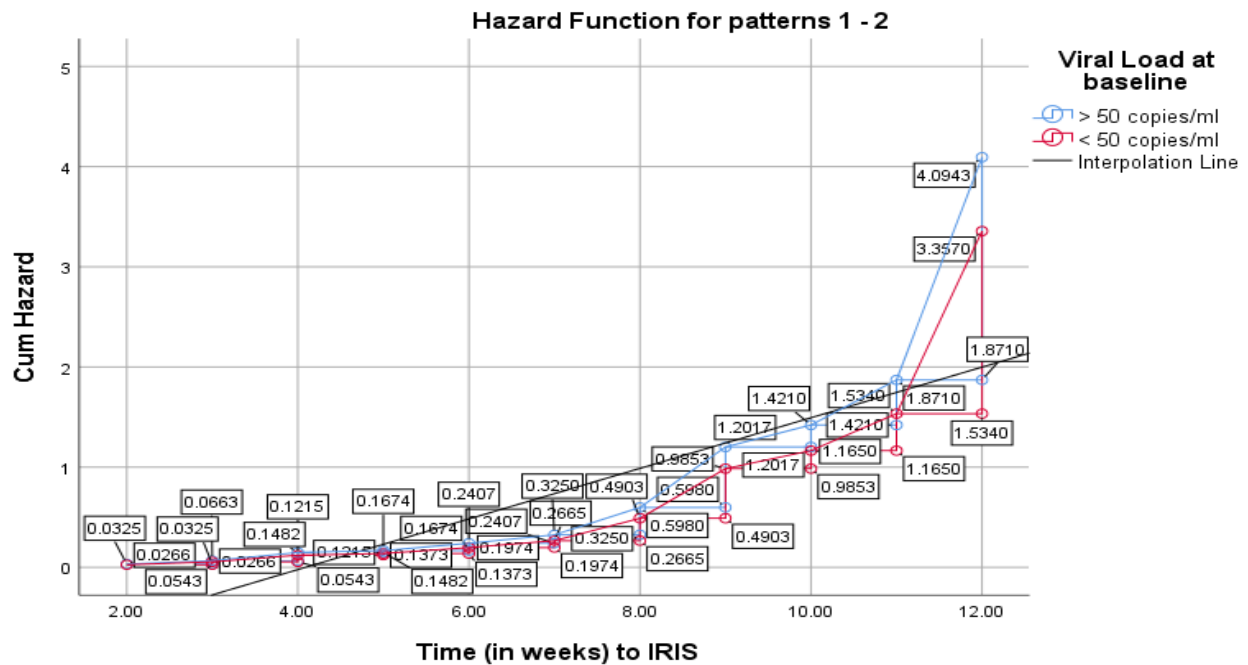
**Figure 3:** Hazard function for IRIS diagnosis by WHO-HIV Staging

CD4 count of over 500 cells/mm<sup>3</sup> seemingly was associated with unmasking IRIS diagnosis [ $(\beta) = 0.192$ , HR = 1.211,  $P = 0.416$ ]; *figure 7*, while RNA-HIV viral loads above 50 copies/ml with paradoxical IRIS [ $(\beta) = - 0.199$ , HR = 0.820,  $P = 0.360$ ]. The cumulative hazard for IRIS in general was higher in pregnant women having CD4 count > 500cells/mm<sup>3</sup> and HIV viral loads > 50 Copies

/mL at baseline and this risk, increased with time towards the 12<sup>th</sup> week post ART initiation; figures 4 and 5 respectively.



**Figure 4:** Hazard function for IRIS diagnosis by CD4 count at baseline



**Figure 5:** Hazard function for IRIS diagnosis by RNA-viral loads at baseline

All the above specific parameters are herein is presented; *table 3*

**Table 3: Cox-model regression analysis for clinical parameters at baseline**

**Variables in the Equation**

Variable	B	SE	Wald	df	Sig.	95.0% CI for Exp(B)	
						Exp(B)	Lower Upper
<b>MBMI (&lt; 18.5)</b>			7.031	3	.071		
<b>MBMI (18.5-24.9)</b>	.555	.329	2.843	1	.092	1.742	.914 3.321
<b>MBMI (25 -29.9)</b>	.907	.355	6.550	1	.010	2.478	1.237 4.965
<b>MBMI (&gt; 30)</b>	.935	.605	2.394	1	.122	2.548	.779 8.333
<b>Rhesus Factor</b>	-	.405	.673	1	.412	.718	.325 1.586
		.332					
<b>Parity-(1)</b>			5.981	3	.113		
<b>Parity (2-3)</b>	-	.260	4.350	1	.037	.582	.349 .968
		.542					
<b>Parity (3-4)</b>	-	.340	.229	1	.632	.850	.437 1.654
		.163					
<b>Parity (&gt; 5)</b>		.743	.773 .925	1	.336	2.103	.462 9.570
<b>WHO-HIV Staging (Stage 1)</b>			.700	3	.873		
<b>WHO-HIV Staging (Clinical 2)</b>	-	.267	.173	1	.677	.895	.530 1.511
		.111					
<b>WHO-HIV Staging (Clinical 3)</b>	-	.345	.644	1	.422	.758	.386 1.490
		.276					
<b>WHO-HIV Staging (Clinical 4)</b>	.047	.632	.005	1	.941	1.048	.304 3.614
<b>CD4 Count</b>	.192	.236	.663	1	.416	1.211	.763 1.922
<b>Viral Load</b>	-	.217	.838	1	.360	.820	.536 1.254
		.199					

A positive Coefficient ( $\beta$ ) favors unmasking IRIS, while a negative one, paradoxical IRIS. *Wald test* (also called the **Wald Chi-Squared Test**) is a way to find out if explanatory variables in a model are significant. **Exp ( $\beta$ )** is the predicted change in odds for a unit increase in the predictor. **SE** is a statistical term that measures the accuracy with which a sample distribution represents a population by using standard deviation.

## Decision tree analysis on prediction of IRIS incidence

Collectively for exploratory and confirmatory classification analysis to assess their predictions of IRIS type by 12<sup>th</sup> week post ART initiation, decision tree analysis was performed by including all the clinical parameters and the demographic characteristics of the participants including; location, education, occupation, religion, marital status, income source and maternal age. Maternal age was the only notable predictor of IRIS type. Seventy six percent (76%) (P = 0.729) of pregnant women aged 20-29 and 40-49 years of age were diagnosed with unmasking IRIS. This prediction applied to 63 women and the model was accurate 48 times. Further, women with a gravidity of 4-5 and 1 predicted eighty-eight (88%) (P = 0.045) unmasking IRIS as compared to those with a parity of 2-3 (62 %) (P = 0.045); *Table 4*.

**Table 4: Tree table on exploratory decision tree analysis of IRIS development by pooled baseline characteristics**

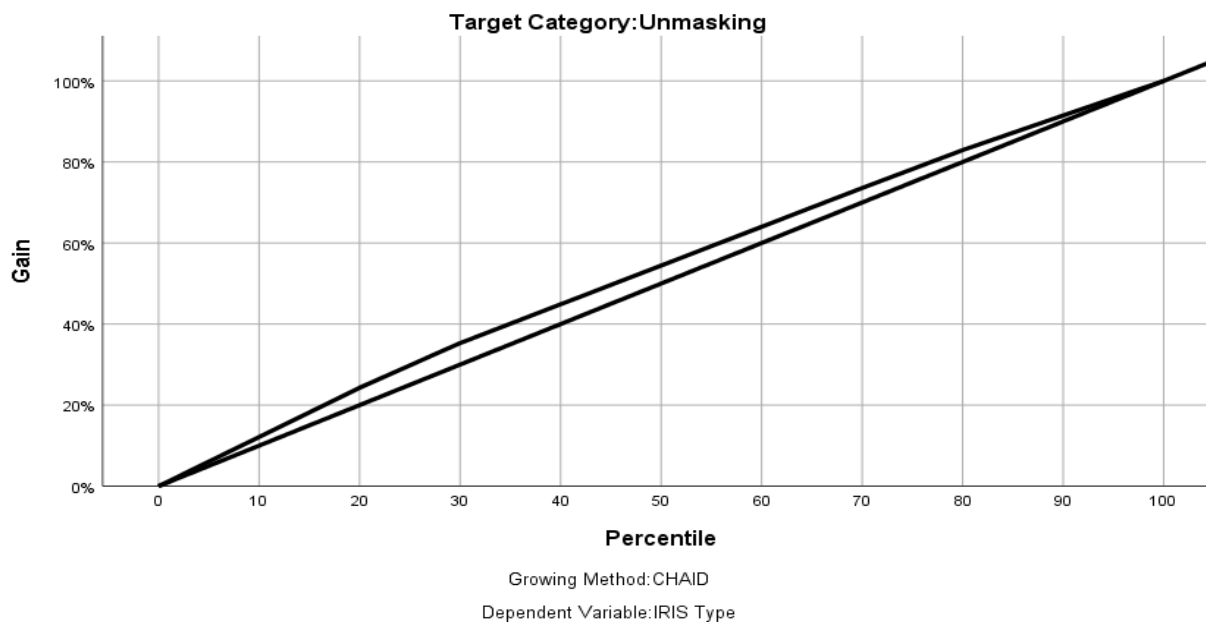
Node	Paradoxical Unmasking Total						Predicted Paren Category	Primary Independent Variable	Chi-Sig. <sup>a</sup>	Square	Split df	Values
	N	Percent	N	Percent	N	Percent						
0	36	27.3%	96	72.7%	132	100.0%	Unmasking					
1	15	23.8%	48	76.2%	63	47.7%	Unmasking0	Maternal Age	1.0	.729	1	20-29; 40-49
2	21	30.4%	48	69.6%	69	52.3%	Unmasking0	Maternal Age	1.0	.729	1	30-39
3	11	37.9%	18	62.1%	29	22.0%	Unmasking1	Parity	.04	5.907	1	2-3
4	4	11.8%	30	88.2%	34	25.8%	Unmasking1	Parity	.04	5.907	1	4-5; 1

Growing Method: CHAID

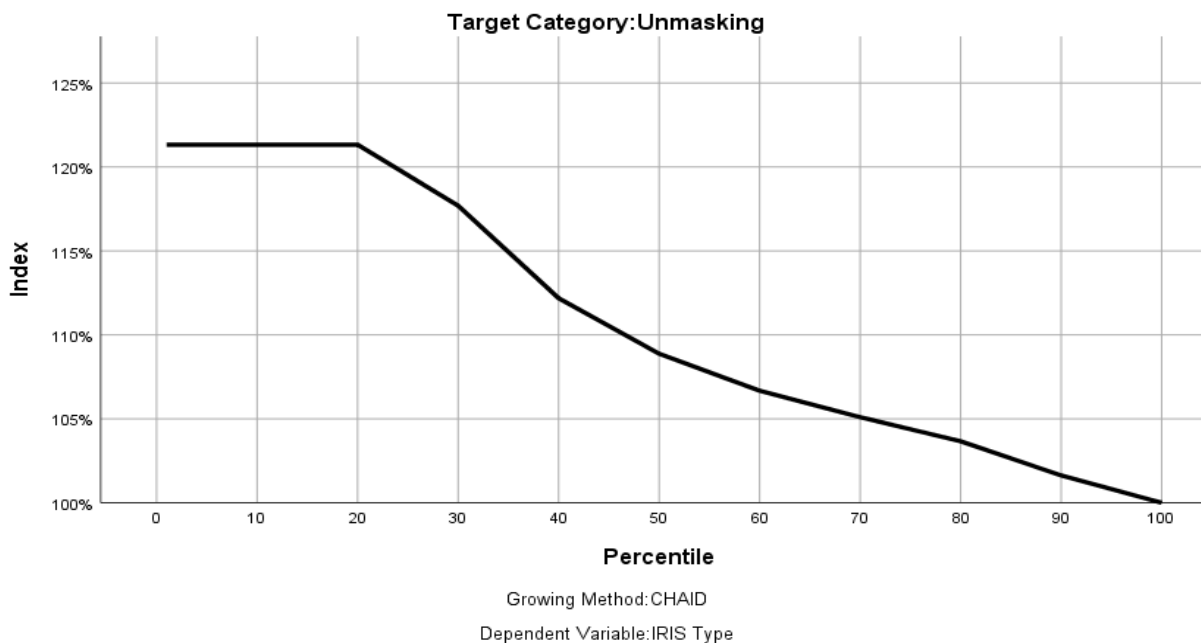
Dependent Variable: IRIS Type

a. Bonferroni adjusted

The gain chart; figure 6 demonstrated that unmasking IRIS was predicted close to the perfect prediction model with the ratio of the node response percentage for the target category compared to the overall target category response percentage for the entire sample; *figure 7*.



**Figure 6:** The gain chart curve on prediction model of IRIS



**Figure 7:** The index chart on the ratio of the node response percentage

## Discussion

In this prospective, observational, active records-based study conducted in 2 facilities, representing diverse clinical setting and environments in which IRIS may occur, we evaluated IRIS incidence by type and IRIS predictors including survival and hazard risk analysis using Cox-model.

Unmasking IRIS was more common in this population of ART naïve pregnant women as compared to paradoxical IRIS similar to a study that reported 69.4% “unmasking” and 27.8% “paradoxical”<sup>31</sup>. This was further close within the percentage range of 59% to 76% obtained from other studies<sup>27,32–36</sup>. Further clearly as demonstrated in this current, unmasking verses paradoxical IRIS were found to be (69.4%) “unmasking” and 27.8% “paradoxical”<sup>12</sup>. Another study, reports a 22% paradoxical IRIS<sup>37</sup>, close to the current proportion as obtained from this study.

Maternal Basal Metabolic Index (MBMI) of (25 -29.9) clearly predicted unmasking IRIS as depicted is a study that established BMI  $\geq 20$  kg/m<sup>2</sup> as probable predictor of IRIS<sup>27,38</sup>, contrary to another study that established BMI <18.5 (HR 2.15, 95% CI 1.07–4.3, p=0.03) as IRIS diagnosis predictor. Gravidity of above 5 clearly predicted unmasking IRIS and although there are no clear studies elucidating this fact, a study concluded that, gestational age, and gravidity of above 4 influenced T lymphocyte subset levels<sup>39</sup>, a key phenomenon in IRIS development. WHO-HIV Staging (clinical stage 4) was positive with unmasking IRIS, and as it was the common form of IRIS, this findings are elucidated in a studies that report HIV late presenters<sup>40,41</sup>. Again, another study shows risk factors for IRIS include an advanced state of immunosuppression disseminated OIs at ART initiation<sup>32,42</sup>, a clear fact associated with advanced HIV infection The hazard risk for unmasking IRIS was higher at primary and clinical stage 4. This is matched in a study that described five patients with advanced HIV-1 infection in whom initiation of HAART resulted in unmasking of an underlying occult opportunistic infection<sup>43</sup>, and as regards unmasking IRIS diagnosis, this can be attributed to the fact that, people with acute HIV infection may experience fever, lymphadenopathy, pharyngitis, skin rash, myalgia, arthralgia, and other symptoms<sup>44–46</sup>.

In contrast to other studies that showed higher risk IRIS in people starting treatment with a very low CD4 cell count (usually below 100)<sup>6,42,47–49</sup>, the current study established that, CD4 count of over 500 cells/mm<sup>3</sup> seemingly was associated with unmasking IRIS diagnosis in this ART naïve

cohort of pregnant women. This fact may be due to pregnancy related phenomenon and further, IRIS a pathologic inflammatory response to a preexisting antigen that develops soon after initiation of ART therapy with or without a corresponding increase in CD4 cell count<sup>50</sup>. Again, the already high CD4 count prior to ART initiation may imitate the known increase of the same that is associated with developing IRIS<sup>51,52</sup>. Further to this, IRIS can occur at any CD4 count<sup>5,8,53-55</sup>

On the other hand, RNA-HIV viral loads > 50 copies/ml showed a positive direction with paradoxical IRIS, similar to existing evidence<sup>55-58</sup>. However, on contrary, some reports have shown that, it is the dramatic reduction of HIV-RNA viral load levels after starting ART that significantly demonstrate IRIS development<sup>55,59,60</sup>. This concept may be justified by the evidence that, pre-existing latent opportunistic infection with a high antigenic burden at the time of starting ART increases the risk and severity of IRIS<sup>8,37,55,61</sup>. In real sense, paradoxical IRIS is linked with most opportunistic infection as compared to unmasking IRIS<sup>27,62,63</sup>. The cumulative hazard for IRIS was higher in pregnant women with both higher baseline CD4 count and viral loads increasing with time towards the 12<sup>th</sup> week post ART initiation. This, concurs with findings that showed increased baseline CD4+ T-cell count among women of reproductive age on ART<sup>64</sup>, while for higher viral loads by other studies<sup>65</sup>. The increased risk for IRIS with time as per this study further is generally implicated in previous studies<sup>47,66</sup>. Decision tree analysis showed that, majority of much younger and older women presented with unmasking IRIS and seemingly, a gravidity of 1 and 4-5 were associated with unmasking IRIS. This finding is supported by a study conducted in southern Mozambique<sup>67</sup>.

This study had several limitations. Identification of IRIS by type, either paradoxical or unmasking may have been compromised due to the thin gap between the two, however, the clear approach was based and guided by the specific biomarkers such as CD4 count and RNA-viral loads at baseline. Again, the duration of time a woman had stayed after contracting HIV may not have been known prior to conceiving or after, however, based on the clinical parameters guiding the HIV infection staging by WHO, it was possible to estimate the same. Last, a pregnant woman, due to a slow developing disease courtesy of having been infected with HIV, may have used some medications without clinical directives that would have compromised the process of IRIS

identification. This however was tackled by using a combined guideline to diagnose IRIS and as such, this limitation somehow mitigated. Despite these limitations, we believe the study results provide valuable information about the incidence of IRIS by type, either unmasking or paradoxical., estimates the survival time to the event of either IRIS in general and IRIS by type while accounting for key baseline clinical parameters predicting IRIS in ART naïve pregnant women.

In conclusion, as per this study, unmasking IRIS was the common type of IRIS. BMI of 25-29 and baseline viral loads of 50 copies /ml were associated with paradoxical IRIS while the baseline CD4 count of 500 cells/ mm<sup>3</sup> with unmasking IRIS, same case with WHO- HIV clinical infection stage 1 and 4. Gravidities of 1 and 4 – 5 were predicted unmasking IRIS. Future prospective studies should further validate the potential predictive value, feasibility, and effectiveness of BMI, gravidity, age, gestational stage, HIV baseline biomarkers and HIV infection clinical stage in predicting unmasking or paradoxical IRIS, and further, harness the evidence on survival time to an occurrence of IRIS among ART by type naïve pregnant women.

## References

1. Sereti I, Rodger AJ, French MA. Biomarkers in immune reconstitution inflammatory syndrome: Signals from pathogenesis. *Curr Opin HIV AIDS*. 2010;5(6). doi:10.1097/COH.0b013e32833ed774
2. Panel on Antiretroviral Guidelines for Adults N-. Recommendations for the Use of Antiretroviral Drugs During Pregnancy and Interventions to Reduce Perinatal HIV Transmission in the United States. *Dep Heal Hum Serv*. 2022;1.
3. DHHS. Guidelines for the Use of Antiretroviral Agents in Adults and Adolescents with HIV. *October*. 2019;13(1).
4. Kaiser Family Foundation. HIV/AIDS Glossary. In: *Reporting Manual on HIV/AIDS*. ; 2012.
5. Novak RM, Richardson JT, Buchacz K, et al. Immune reconstitution inflammatory syndrome: Incidence and implications for mortality. *AIDS*. 2012;26(6). doi:10.1097/QAD.0b013e3283511e91
6. French MA. Immune reconstitution inflammatory syndrome: A reappraisal. *Clin Infect Dis*. 2009;48(1). doi:10.1086/595006
7. Xie Y, Xu E, Bowe B, Al-Aly Z. Long-term cardiovascular outcomes of COVID-19. *Nat Med*. 2022;28(3). doi:10.1038/s41591-022-01689-3



8. Breton G, Duval X, Estellat C, et al. Determinants of immune reconstitution inflammatory syndrome in HIV type 1-infected patients with tuberculosis after initiation of antiretroviral therapy. *Clin Infect Dis*. 2004;39(11). doi:10.1086/425742
9. Kyalo MJ, Kombe Y, Anzelimo M, Kiptoo M. EFFECT OF MATERNAL HIV IMMUNE RECONSTITUTION INFLAMMATORY RESPONSE SYNDROME ON THE RISK OF ADVERSE PREGNANCY-FETAL OUTCOMES IN HIV-1 POSITIVE, ART NAIVE PREGNANT WOMEN OF REPRODUCTIVE AGE IN SELECTED HOSPITALS, NAIROBI, KENYA. *Eur J Public Heal Stud*. 2020;3(1). doi:10.46827/ejphs.v3i1.76
10. Lodi S, Del Amo J, Moreno S, et al. Opportunistic infections and AIDS malignancies early after initiating combination antiretroviral therapy in high-income countries. *AIDS*. 2014;28(16). doi:10.1097/QAD.0000000000000456
11. Eshun-Wilson I, Havers F, Nachega JB, et al. Evaluation of paradoxical TB-associated IRIS with the use of standardized case definitions for resource-limited settings. *J Int Assoc Physicians AIDS Care*. 2010;9(2). doi:10.1177/1545109710361537
12. Letang E, Almeida JM, Miró JM, et al. Predictors of immune reconstitution inflammatory syndrome-associated with kaposi sarcoma in mozambique: A prospective study. *J Acquir Immune Defic Syndr*. 2010;53(5). doi:10.1097/QAI.0b013e3181bc476f
13. Matthews LT, Kaida A, Kanters S, et al. HIV-infected women on antiretroviral treatment have increased mortality during pregnant and postpartum periods. *AIDS*. 2013;27(SUIPL.1). doi:10.1097/QAD.0000000000000040
14. Zash RM, Souda S, Leidner J, et al. High proportion of deaths attributable to HIV among postpartum women in Botswana despite widespread uptake of antiretroviral therapy. *AIDS Patient Care STDS*. 2017;31(1). doi:10.1089/apc.2016.0154
15. Garcia Garrido HM, Mak AMR, Wit FWNM, et al. Incidence and risk factors for invasive pneumococcal disease and community-acquired pneumonia in human immunodeficiency virus-infected individuals in a high-income setting. *Clin Infect Dis*. 2020;71(1). doi:10.1093/cid/ciz728
16. The INSIGHT START Study Group. Initiation of Antiretroviral Therapy in Early Asymptomatic HIV Infection. *N Engl J Med*. 2015;373(9).
17. Lee S, Byakwaga H, Boum Y, et al. Immunologic pathways that predict mortality in HIV-infected Ugandans initiating antiretroviral therapy. *J Infect Dis*. 2017;215(8). doi:10.1093/infdis/jix113
18. Piccinni MP. T cell tolerance towards the fetal allograft. *J Reprod Immunol*. 2010;85(1). doi:10.1016/j.jri.2010.01.006
19. Poole JA, Claman HN. Immunology of pregnancy: Implications for the mother. *Clin Rev Allergy Immunol*. 2004;26(3). doi:10.1385/CRIAI:26:3:161
20. Gaunt G, Ramin K. Immunological tolerance of the human fetus. *Am J Perinatol*. 2001;18(6). doi:10.1055/s-2001-17861
21. Kemp SA, Collier DA, Datir RP, et al. SARS-CoV-2 evolution during treatment of chronic

- infection. *Nature*. 2021;592(7853). doi:10.1038/s41586-021-03291-y
22. Sereti I, Sheikh V, Shaffer D, et al. Prospective international study of incidence and predictors of immune reconstitution inflammatory syndrome and death in people living with human immunodeficiency virus and severe lymphopenia. *Clin Infect Dis*. 2020;71(3). doi:10.1093/cid/ciz877
  23. Tan DBA, Yong YK, Tan HY, et al. Immunological profiles of immune restoration disease presenting as mycobacterial lymphadenitis and cryptococcal meningitis. *HIV Med*. 2008;9(5). doi:10.1111/j.1468-1293.2008.00565.x
  24. Tan HY, Yong YK, Lim SH, et al. Tuberculosis (TB)-associated immune reconstitution inflammatory syndrome in TB-HIV co-infected patients in Malaysia: Prevalence, risk factors, and treatment outcomes. *Sex Health*. 2014;11(6). doi:10.1071/SH14093
  25. Antonelli LRV, Mahnke Y, Hodge JN, et al. Elevated frequencies of highly activated CD4+ T cells in HIV+ patients developing immune reconstitution inflammatory syndrome. *Blood*. 2010;116(19). doi:10.1182/blood-2010-05-285080
  26. S.A. S, F. V, J. D, et al. Incidence and risk factors for immune reconstitution inflammatory syndrome during highly active antiretroviral therapy. *Aids*. 2005;19(4).
  27. Haddow LJ, Moosa MYS, Mosam A, Moodley P, Parboosing R, Easterbrook PJ. Incidence, Clinical Spectrum, Risk Factors and Impact of HIV-Associated Immune Reconstitution Inflammatory Syndrome in South Africa. *PLoS One*. 2012;7(11). doi:10.1371/journal.pone.0040623
  28. Stek C, Buyze J, Menten J, et al. Diagnostic Accuracy of the INSHI Consensus Case Definition for the Diagnosis of Paradoxical Tuberculosis-IRIS. *J Acquir Immune Defic Syndr*. 2021;86(5). doi:10.1097/QAI.0000000000002606
  29. SPSS survival manual: a step by step guide to data analysis using IBM SPSS. *Aust N Z J Public Health*. 2013;37(6). doi:10.1111/1753-6405.12166
  30. Weinberg JL, Kovarik CL. The WHO clinical staging system for HIV/AIDS. *Virtual Mentor*. 2010;12(3). doi:10.1001/virtualmentor.2010.12.3.cpr11-1003
  31. Letang E, Miró JM, Nhampossa T, et al. Incidence and predictors of immune reconstitution inflammatory syndrome in a rural area of Mozambique. *PLoS One*. 2011;6(2). doi:10.1371/journal.pone.0016946
  32. Hoyo-Ulloa I, Belaunzarán-Zamudio PF, Crabtree-Ramirez B, Galindo-Fraga A, Pérez-Aguinaga ME, Sierra-Madero JG. Impact of the immune reconstitution inflammatory syndrome (IRIS) on mortality and morbidity in HIV-infected patients in Mexico. *Int J Infect Dis*. 2011;15(6). doi:10.1016/j.ijid.2011.02.007
  33. Cotton MF, Rabie H, Nemes E, et al. A prospective study of the immune reconstitution inflammatory syndrome (IRIS) in HIV-infected children from high prevalence countries. *PLoS One*. 2019;14(7). doi:10.1371/journal.pone.0211155
  34. Pérez-Rueda M, Hernández-Cabrera M, Francés-Urmeneta A, et al. Immune reconstitution inflammatory syndrome in HIV-infected immigrants. *Am J Trop Med Hyg*. 2017;97(4).

doi:10.4269/ajtmh.16-0773

35. Haddow LJ, Easterbrook PJ, Mosam A, et al. Defining immune reconstitution inflammatory syndrome: Evaluation of expert opinion versus 2 case definitions in a south african cohort. *Clin Infect Dis*. 2009;49(9). doi:10.1086/630208
36. Wang ME, Castillo ME, Montano SM, Zunt JR. Immune reconstitution inflammatory syndrome in human immunodeficiency virus-infected children in Peru. *Pediatr Infect Dis J*. 2009;28(10). doi:10.1097/INF.0b013e3181a4b7fa
37. Han X, Liu H, Wang Y, et al. A nomogram for predicting paradoxical immune reconstitution inflammatory syndrome associated with cryptococcal meningitis among HIV-infected individuals in China. *AIDS Res Ther*. 2022;19(1). doi:10.1186/s12981-022-00444-5
38. Madlala HP, Malaba TR, Newell ML, Myer L. Elevated body mass index during pregnancy and gestational weight gain in HIV-infected and HIV-uninfected women in Cape Town, South Africa: association with adverse birth outcomes. *Trop Med Int Heal*. 2020;25(6). doi:10.1111/tmi.13387
39. Gomo E, Vennervald BJ, Ndhlovu P, Kaestel P, Nyazema N, Friis H. Predictors and reference values of CD4 and CD8 T lymphocyte counts in pregnancy: a cross sectional study among HIV negative women in Zimbabwe. *Cent Afr J Med*. 2004;50(1-2).
40. Sereti. Immune Reconstruction Inflammatory Syndrome in HIV Infection: Beyond What Meets The Eye. *Top Antivir Med*. 2019;27(4).
41. Manabe YC, Campbell JD, Sydnor E, Moore RD. Immune reconstitution inflammatory syndrome: Risk factors and treatment implications. *J Acquir Immune Defic Syndr*. 2007;46(4). doi:10.1097/QAI.0b013e3181594c8c
42. Melzani A, De Reynal De Saint Michel R, Ntab B, et al. Incidence and Trends in Immune Reconstitution Inflammatory Syndrome Associated with *Histoplasma capsulatum* among People Living with Human Immunodeficiency Virus: A 20-Year Case Series and Literature Review. *Clin Infect Dis*. 2020;70(4). doi:10.1093/cid/ciz247
43. Balkhair A, Ahamed S, Sankhla D. Unmasking immune reconstitution inflammatory syndrome (IRIS): A report of five cases and review of the literature. *Sultan Qaboos Univ Med J*. 2011;11(1).
44. Kaiser P, University of California SD. Community-based Interventions to Increase HIV Testing and HIV Care Utilization. *Toronto, Ontario HIV Treat Netw*. Published online 2016.
45. Mckellar MS, Cope AB, Gay CL, et al. Acute HIV-1 Infection in the southeastern United States: A cohort study. *AIDS Res Hum Retroviruses*. 2013;29(1). doi:10.1089/aid.2012.0064
46. Hoenigl M, Green N, Camacho M, et al. Signs or symptoms of acute HIV infection in a cohort undergoing community-based screening. *Emerg Infect Dis*. 2016;22(3). doi:10.3201/eid2203.151607

47. Makhoul J, Uppal S, Siegel M. Double trouble: Concomitant unmasking and paradoxical immune reconstitution inflammatory syndrome in a patient with newly diagnosed HIV. *IDCases*. 2022;28. doi:10.1016/j.idcr.2022.e01482
48. Murdoch DM, Venter WDF, Van Rie A, Feldman C. Immune reconstitution inflammatory syndrome (IRIS): Review of common infectious manifestations and treatment options. *AIDS Res Ther*. 2007;4. doi:10.1186/1742-6405-4-9
49. Beishuizen SJE, Geerlings SE. Immune reconstitution inflammatory syndrome: Immunopathogenesis, risk factors, diagnosis, treatment and prevention. *Neth J Med*. 2009;67(10).
50. Mutizwa MM, Anadkat MJ. Dermatologic Manifestations of HIV Infection/AIDS. In: *Infectious Diseases, 2-Volume Set*. ; 2017. doi:10.1016/B978-0-7020-6285-8.00098-8
51. Vijayan KV, Karthigeyan KP, Tripathi SP, Hanna LE. Pathophysiology of CD4+ T-Cell depletion in HIV-1 and HIV-2 infections. *Front Immunol*. 2017;8(MAY). doi:10.3389/fimmu.2017.00580
52. Sadiq U, Shrestha U, Guzman N. Prevention Of Opportunistic Infections In HIV/AIDS. StatPearls [Internet].
53. Shelburne SA, Darcourt J, White AC, et al. The role of immune reconstitution inflammatory syndrome in AIDS-related *Cryptococcus neoformans* disease in the era of highly active antiretroviral therapy. *Clin Infect Dis*. 2005;40(7). doi:10.1086/428618
54. Shelburne SA, Visnegarwala F, Darcourt J, et al. Incidence and risk factors for immune reconstitution inflammatory syndrome during highly active antiretroviral therapy. *AIDS*. 2005;19(4). doi:10.1097/01.aids.0000161769.06158.8a
55. Müller M, Wandel S, Colebunders R, Attia S, Furrer H, Egger M. Immune reconstitution inflammatory syndrome in patients starting antiretroviral therapy for HIV infection: a systematic review and meta-analysis. *Lancet Infect Dis*. 2010;10(4). doi:10.1016/S1473-3099(10)70026-8
56. Roade Tato L, Burgos Cibrian J, Curran Fábregas A, et al. Immune reconstitution inflammatory syndrome in HIV-infected patients with *Pneumocystis jirovecii* pneumonia. *Enferm Infecc Microbiol Clin*. 2018;36(10). doi:10.1016/j.eimc.2017.11.002
57. Liu P, Dillingham R, McManus K. Hospital days attributable to immune reconstitution inflammatory syndrome in persons living with HIV before and after the 2012 DHHS HIV guidelines. *AIDS Res Ther*. 2017;14(1). doi:10.1186/s12981-017-0152-0
58. Narendran G, Jyotheeswaran K, Senguttuvan T, et al. Characteristics of paradoxical tuberculosis-associated immune reconstitution inflammatory syndrome and its influence on tuberculosis treatment outcomes in persons living with HIV. *Int J Infect Dis*. 2020;98. doi:10.1016/j.ijid.2020.06.097
59. He B, Zheng Y, Liu M, et al. Identifying risk factors of immune reconstitution inflammatory syndrome in AIDS patients receiving highly active anti-retroviral therapy. *Brazilian J Infect Dis*. 2013;17(2). doi:10.1016/j.bjid.2012.10.014

60. Gaillet A, Calin R, Flandre P, et al. Increased risk of IRIS-associated tuberculosis in HIV-infected patients receiving Integrase Inhibitors. *Med Mal Infect*. Published online 2020. doi:10.1016/j.medmal.2020.09.005
61. Achenbach CJ, Harrington RD, Dhanireddy S, Crane HM, Casper C, Kitahata MM. Paradoxical immune reconstitution inflammatory syndrome in HIV-infected patients treated with combination antiretroviral therapy after AIDS-defining opportunistic infection. *Clin Infect Dis*. 2012;54(3). doi:10.1093/cid/cir802
62. Achappa B, Madi D, Shetty N, Mahalingam S. A patient with multiple Immune Reconstitution Inflammatory Syndrome (IRIS) following initiation of antiretroviral therapy. *J Clin Diagnostic Res*. 2012;6(9). doi:10.7860/JCDR/2012/4547.2556
63. Ruzgas G, Eshan SH, Ramanathan S, Gotimukul A, Bodapati RK. Immune Reconstitution Inflammatory Syndrome Presenting as Disseminated Kaposi Sarcoma. *Cureus*. Published online 2023. doi:10.7759/cureus.34832
64. Belay AS, Manaye GA, Kebede KM, Abateneh DD. Predictors of current cd4+ t-cell count among women of reproductive age on antiretroviral therapy in public hospitals, southwest ethiopia. *HIV/AIDS - Res Palliat Care*. 2021;13. doi:10.2147/HIV.S294367
65. Ntlantsana V, Hift RJ, Mphatswe WP. HIV viraemia during pregnancy in women receiving preconception antiretroviral therapy in KwaDukuza, KwaZulu-Natal. *South Afr J HIV Med*. 2019;20(1). doi:10.4102/sajhivmed.v20i1.847
66. Grant PM, Komarow L, Andersen J, et al. Risk factor analyses for immune reconstitution inflammatory syndrome in a randomized study of early vs. deferred ART during an opportunistic infection. *PLoS One*. 2010;5(7). doi:10.1371/journal.pone.0011416
67. González R, Rupérez M, Sevene E, et al. Effects of HIV infection on maternal and neonatal health in southern Mozambique: A prospective cohort study after a decade of antiretroviral drugs roll out. *PLoS One*. 2017;12(6). doi:10.1371/journal.pone.0178134