

Supplementary Information of Drivers and impact of the early silent invasion of SARS-CoV-2 Alpha

Benjamin Faucher¹, Chiara E. Sabbatini¹, Peter Czippon², Moritz U.G. Kraemer^{3,4}, Philippe Lemey⁵, Vittoria Colizza¹, Francois Blanquart⁶, Pierre-Yves Boëlle¹, Chiara Poletto^{*7}

¹Sorbonne Université, INSERM, Institut Pierre Louis d'Epidémiologie et de Santé Publique (IPLESP), F75012, France

²Institute for Evolution and Biodiversity, University of Münster, Münster 48149, Germany

³Department of Biology, University of Oxford, Oxford, UK

⁴Pandemic Sciences Institute, University of Oxford, UK

⁵Department of Microbiology, Immunology and Transplantation, Rega Institute, Laboratory for Clinical and Epidemiological Virology, KU Leuven, Leuven, Belgium

⁶Center for Interdisciplinary Research in Biology, CNRS, Collège de France, PSL Research University, Paris 75005, France

⁷Department of Molecular Medicine, University of Padova, 35121 Padova, Italy

*Corresponding author. Email : chiara.poletto@unipd.it

International dissemination model: Sensitivity analysis

In the sensitivity analysis we tested the following assumptions:

- Mean incubation period equal to 4 days
- Mean incubation period equal to 6 days
- Delays computed for each countries after the alert averaged over a sliding time window of 7 days
- Percentage of case detection outside the UK, $K_c = 25\%$
- Flights from all England airports with a catchment population of 56 millions inhabitants
- No changepoint for the Alpha incidence exponential growth in the UK
- Two changepoints for the Alpha incidence exponential growth in the UK an 5 Nov 2020 and 2 Dec 2020

Table S4 shows the results of the sensitivity analysis. For the baseline scenario and the sensitivity models tested we provide best estimates and some model predictions chosen as reference. Varying the parameters had little impact on the parameters estimated in the model. The number of countries with introduction before 31 Dec 2020 increased in the following cases: delays from collection to submission for Alpha computed for each country aggregated over 7 days, 25% detection of imported cases, no change of slope.

Median seeding time

In the reference case in which traveling fluxes are constant in time and R_t is the same in the destination country as in the UK, the reference median date of seeding would fall halfway between the date of emergence and 31 Dec 2020 (see Material and Methods). The median seeding dates of active chains at the end of 2020 departed from this assumed scenario. In Fig. 4D, we found that there was a negative correlation between the overall reproduction ratio over the period and the difference between computed median seeding date and reference median seeding date, implying that lower transmissibility overall led to less success in early

introductions. In fig. S3 we show that there was no significant correlation between the international traffic drop and the difference of the median seeding date with the reference date.

Supplementary figures

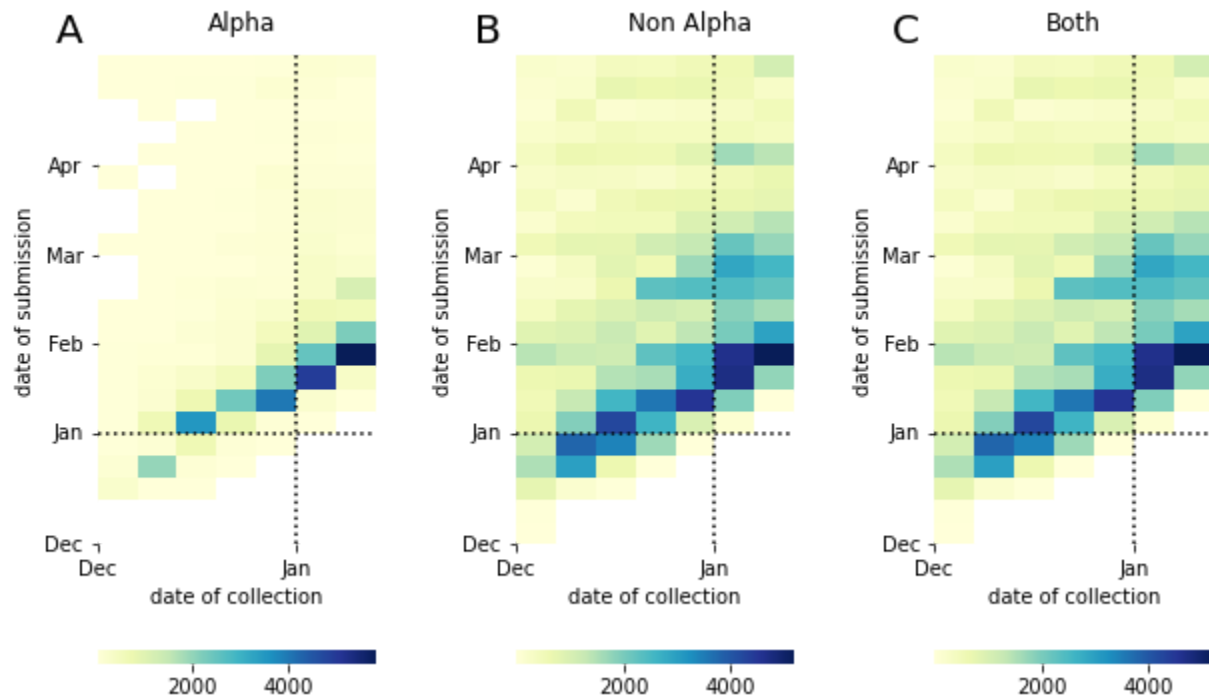


Fig. S1. Occurrences of delays between collection and submission in time. (A) Alpha variant. **(B)** Non Alpha variants. **(C)** Both.

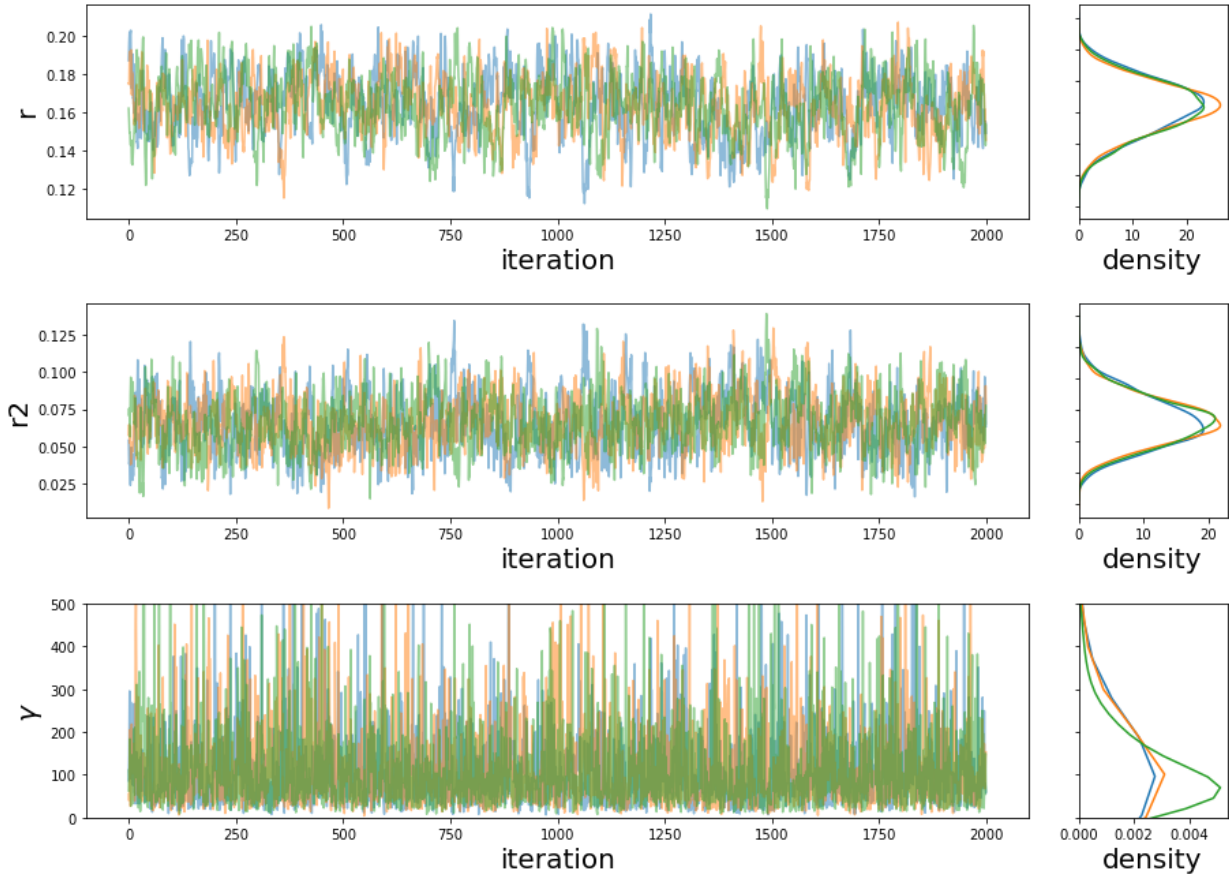


Fig. S2. MCMC convergence plot. The fitted model has 2 exponential growth rates (r, r_2) with changepoint on November 5th, 2020. Three independent chains (red, green, blue) were run for 100,000 iterations, with 50,000 discarded as burn-in. Posterior samples were thinned 1 in 25.

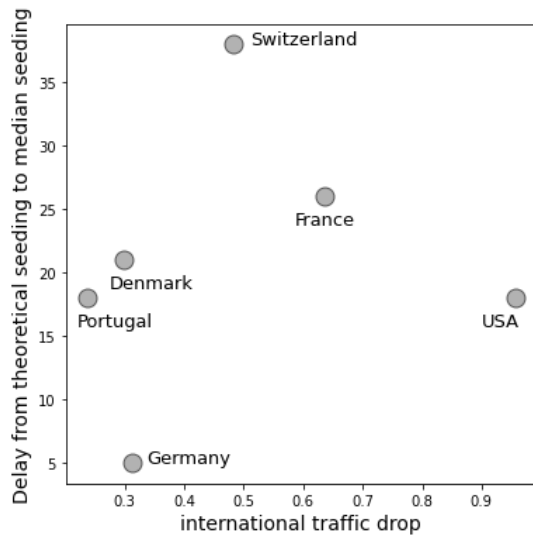


Fig S3. Difference between the median seeding date predicted by the autochthonous model A with the same quantity when R_t is the same in all countries and traveling fluxes do not change in time, plotted against the international traffic drop. The international traffic drop is computed as the international traffic in Nov 2020 divided by the average of international traffic between Sep 2020 and Oct 2020. The Spearman correlation coefficient does not show a correlation between the two quantities (coefficient = 0.23, p-value = 0.66).

Supplementary tables

<u>Country</u>	<u>Date of cases surveyed for Alpha</u>	<u>Daily number cases</u>	<u>Frequency Alpha</u>	<u>Computed number of Alpha infections</u>	<u>Source</u>
France	7 Jan 2021	15,271	0.033	504	(1)
Portugal	4-10 Jan 2021	6,122 (7/01/2021)	0.068*	415	(2)
Germany	23-29 Jan 2021	13,204 (26/01/2021)	0.103	1,360	(3)
Denmark	4-10 Jan 2021	1,908 (7/01/2021)	0.035	67	(4)
Switzerland	15 Jan 2021	2,464	0.058	143	(5)
USA	7 Jan 2021	237,683	0.0048	1,152	(6)

Table S1. Summary of data and assumptions used for the validation. We assumed a fixed one-week delay between cases and infections. For example, infections of 31/12/2020 are detected on 07/01/2021. France epidemiological report last accessed 26/05/2023. Germany report last accessed 26/05/2023. Denmark website last accessed 26/05/2023 (2 Mar 2021 version).

* At week 01 of 2021, 7.38% of cases were suspicions of Alpha, 92% of which are true Alpha.

<u>Parameter</u>	<u>Description</u>	<u>Baseline value</u>
K_{UK}	Fraction of sampled Covid cases.	0.25
K_c	Fraction of sampled imported Covid cases.	0.5
e	Incubation period.	5 days
N	Population in the catchment area of London airports	36M
T_0	Beginning of the risk window for VOC emergence in the UK	August 1st, 2020
T_{cp2}	Date of change of the exponential transmission growth in the UK.	5 Nov 2020

Table S2. Summary of the parameters values assumed in the international dissemination model.

<u>Parameter</u>	<u>Description</u>	<u>Prior distribution</u>
r_1	Exponential growth rate in UK up to 5 Nov 2020	Exp(0.1)
r_2	Exponential growth rate in UK after 5 Nov 2020	N(0,1)
γ	Increasing factor of travelers sampling after 18 Dec 2020	Exp(0.01)

Table S3. Summary of the estimated parameters and their prior distribution.

<u>Scenario</u>	r_1	r_2	γ	<u>Predicted time of emergence in the UK</u>	<u>Median date of first introduction for France, and Denmark</u>	<u>#countries with introduction before 31 Dec 2020</u>
Baseline	0.17 [0.14;0.20]	0.055 [0.02;0.097]	51.67 [12.43;310.11]	08/09 [21/08;19/09]	17/10 [18/09-03/11] - 05/11 [08/10-06/12]	65 [52-73]
Incubation =	0.17	0.056	51.51	09/09	17/10	65 [52-73]

4 days	[0.14;0.20]	[0.024;0.096]	[11.72;307.19]	[21/08;18/09]	[20/09-03/11] - 05/11 [09/10-07/12]	
Incubation = 6 days	0.17 [0.14;0.20]	0.056 [0.024;0.097]	52.36 [11.89;301.70]	06/09 [19/08;16/09]	17/10 [19/09-03/11] - 05/11 [09/10-06/12]	65 [52-73]
Delays computed by country, aggregated on 7 days After 18 Dec 2020	0.16 [0.11;0.19]	0.086 [0.043;0.13]	36.26 [7.60;186.32]	02/09 [17/08;18/09]	17/10 [20/09-09/11] - 09/11 [09/10-07/12]	69 [60-73]
25% detection of imported cases	0.18 [0.15;0.21]	0.058 [0.025;0.1]	51.20 [11.53;300.63]	06/09 [19/08;18/09]	15/10 [19/09-31/10] - 31/10 [07/10-30/11]	70 [61-73]
Air travel : flight from England	0.17 [0.14;0.20]	0.056 [0.025;0.097]	73.13 [15.46;415.13]	02/09 [17/08;18/09]	19/10 [21/09-06/11] - 07/11 [10/10-08/12]	64 [47-72]
No change of slope	0.12 [0.11;0.13]		22.46 [6.75;94.21]	30/08 [16/08;12/09]	23/10 [14/09-13/11] - 24/11 [12/10-13/12]	69 [59-73]
2 changes of slope : 11/5 and 12/2	0.16 [0.12;0.20]	r2 : 0.07 [0.026,0.15] r3 : 0.023 [0.022,0.48]	61.32 [13.19;332.14]	02/09 [17/08;17/09]	18/10 [18/09-08/10] - 08/11 [09/10-07/12]	65 [51-73]

Table S4. Sensitivity analysis of the international dissemination model.

References

1. SPF, COVID-19 : point épidémiologique du 28 janvier 2021, (available at <https://www.santepubliquefrance.fr/maladies-et-traumatismes/maladies-et-infections-respiratoires/infection-a-coronavirus/documents/bulletin-national/covid-19-point-epidemiologique-du>)

- 28-janvier-2021).
2. V. Borges, C. Sousa, L. Menezes, A. M. Gonçalves, M. Picão, J. P. Almeida, M. Vieita, R. Santos, A. R. Silva, M. Costa, L. Carneiro, P. Casaca, P. Pinto-Leite, A. Peralta-Santos, J. Isidro, S. Duarte, L. Vieira, R. Guiomar, S. Silva, B. Nunes, J. P. Gomes, Tracking SARS-CoV-2 lineage B.1.1.7 dissemination: insights from nationwide spike gene target failure (SGTF) and spike gene late detection (SGTL) data, Portugal, week 49 2020 to week 3 2021. *Eurosurveillance*. **26**, 2100131 (2021).
 3. RKI - Coronavirus SARS-CoV-2 - Berichte zu Virusvarianten von SARS-CoV-2 in Deutschland, (available at https://www.rki.de/DE/Content/InfAZ/N/Neuartiges_Coronavirus/DESH/Berichte-VOC-tab.html).
 4. Danish Covid-19 Genome Consortium, (available at <https://covid19genomics.dk/statistics>).
 5. C. Chen, S. A. Nadeau, I. Topolsky, M. Manceau, J. S. Huisman, K. P. Jablonski, L. Fuhrmann, D. Dreifuss, K. Jahn, C. Beckmann, M. Redondo, C. Noppen, L. Risch, M. Risch, N. Wohlwend, S. Kas, T. Bodmer, T. Roloff, M. Stange, A. Egli, I. Eckerle, L. Kaiser, R. Denes, M. Feldkamp, I. Nissen, N. Santacroce, E. Burcklen, C. Aquino, A. C. de Gouvea, M. D. Moccia, S. Grüter, T. Sykes, L. Opitz, G. White, L. Neff, D. Popovic, A. Patrignani, J. Tracy, R. Schlapbach, E. T. Dermitzakis, K. Harshman, I. Xenarios, H. Pegeot, L. Cerutti, D. Penet, A. Blin, M. Elies, C. L. Althaus, C. Beisel, N. Beerwinkler, M. Ackermann, T. Stadler, Quantification of the spread of SARS-CoV-2 variant B.1.1.7 in Switzerland. *Epidemics*. **37**, 100480 (2021).
 6. N. L. Washington, K. Gangavarapu, M. Zeller, A. Bolze, E. T. Cirulli, K. M. Schiabor Barrett, B. B. Larsen, C. Anderson, S. White, T. Cassens, S. Jacobs, G. Levan, J. Nguyen, J. M. Ramirez, C. Rivera-Garcia, E. Sandoval, X. Wang, D. Wong, E. Spencer, R. Robles-Sikisaka, E. Kurzban, L. D. Hughes, X. Deng, C. Wang, V. Servellita, H. Valentine, P. De Hoff, P. Seaver, S. Sathe, K. Gietzen, B. Sickler, J. Antico, K. Hoon, J. Liu, A. Harding, O. Bakhtar, T. Basler, B. Austin, D. MacCannell, M. Isaksson, P. G. Febbo, D. Becker, M. Laurent, E. McDonald, G. W. Yeo, R. Knight, L. C. Laurent, E. de Feo, M. Worobey, C. Y. Chiu, M. A. Suchard, J. T. Lu, W. Lee, K. G. Andersen, Emergence and rapid transmission of SARS-CoV-2 B.1.1.7 in the United States. *Cell*. **184**, 2587-2594.e7 (2021).