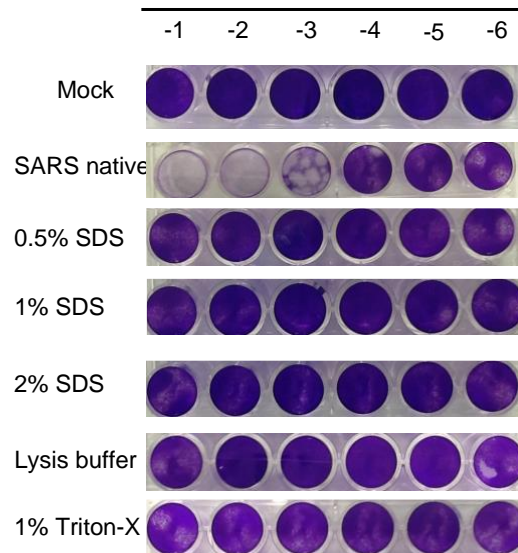


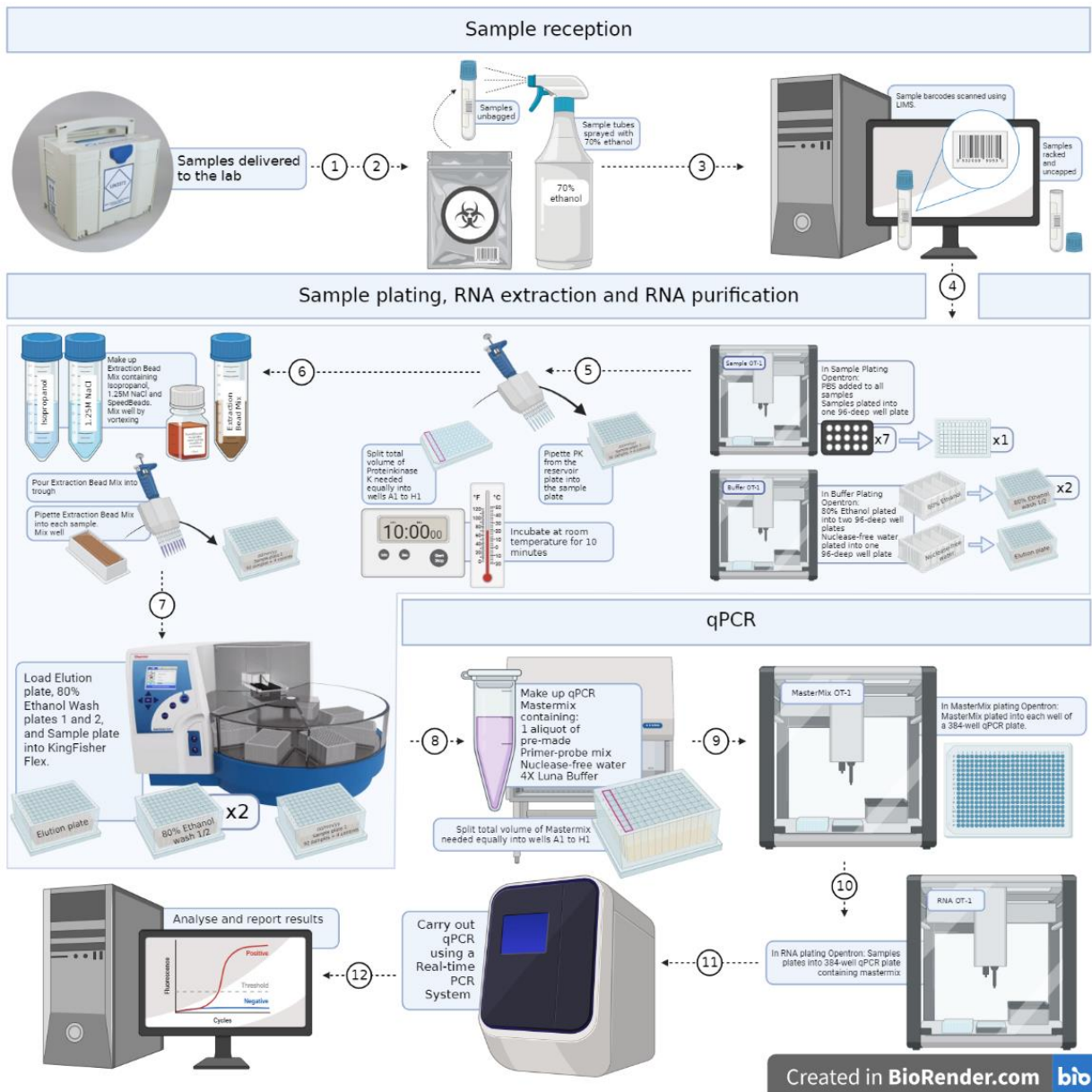
Supplemental Materials

KCL TEST: an open-source inspired SARS-CoV-2 surveillance programme in an academic institution

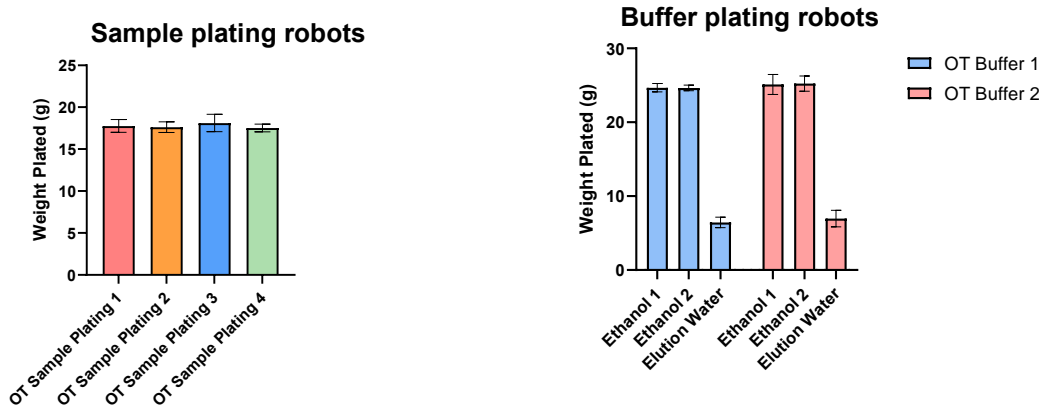
Reis de Andrade, J., Scourfield, E., Peswani-Sajani, S., Poulton, K., Ap Rees, T., Khooshemehri, P., O'Doherty, G., Ong, S., Ivan, I., Goudarzi, N., Gardiner, I., Caine, E., Maguire, T., Leightley, D., Torrico, L., Gasulla, A., Tan, A.V.F., Griffin, A., Papaioannou, S., Trouillet, C., Mischo, H., Giralt, V., C., Wilson, S., Kirk, M., Martindale, J., Curtis, C., Zuckerman, M., Razavi, R., Malim, M.H., Martinez-Nunez, R.T.



Supplemental Figure 1. Plaque assays demonstrating inactivation of SARS-CoV-2 in saliva. Our collection tubes contained 2% SDS and thus we tested decreasing concentrations of the detergent on plaque assays, using increasing amounts of SDS, buffer or 1% Triton-X. Vero E6 TMPRSS2 were employed. All samples spun through size exclusion columns (Amicon) 3 times to remove any detergent contaminants that would also kill cells.



Supplemental Figure 2. Detailed diagram of our testing pipeline. Detailed step by step diagram of our workflow in the laboratory, from sample reception to result reporting.



Supplemental Figure 3. Accuracy of sample plating and buffer plating OT-2 robots. Each OT-2 was tested over 3 days and filled plates were weighted to determine if different machines had different accuracy. Our data showed that all robots performed equally in their plating.

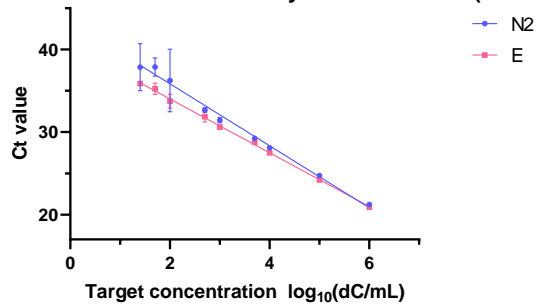
	1	2	3	4	5	6	7	8	9	10	11	12
A	H ₂ O	Neg	Neg	Neg	Neg	Neg	Neg	Neg	Neg	Neg	Neg	Neg
B	Neg	Neg	Neg	Neg	Neg	POS 1	Neg	Neg	POS 10	Neg	Neg	Neg
C	Neg	POS 4	Neg	Neg	Neg	Neg	Neg	Neg	Neg	Neg	Neg	Neg
D	Neg	Neg	Neg	POS 7	Neg	Neg	POS 8	Neg	Neg	Neg	POS 3	Neg
E	Neg	Neg	Neg	Neg	Neg	Neg	Neg	Neg	POS 6	Neg	Neg	Neg
F	Neg	POS 2	Neg	Neg	Neg	POS 5	Neg	Neg	Neg	Neg	Neg	Neg
G	Neg	Neg	Neg	Neg	Neg	Neg	Neg	POS 9	Neg	Neg	Neg	H ₂ O
H	Neg	Neg	Neg	Neg	Neg	H ₂ O	Neg	Neg	Neg	Neg	Neg	PEC

Supplemental Figure 4. Example Interspersed Positive Plate and respective colour key. These layouts were repeated for all combinations of our Kingfisher Flex RNA extractors and thermocyclers. Neg: negative sample, POS positive sample, PEC Positive Extraction Control.

-	25.58	-	28.30	-	25.19	-	23.90	-	26.39	-	23.97
24.85	-	26.02	-	25.28	-	24.46	-	23.82	-	25.36	-
-	25.55	-	25.75	-	25.33	-	24.07	-	24.91	-	23.85
26.12	-	25.39	-	26.51	-	24.10	-	24.23	-	23.85	-
-	25.81	-	25.35	-	25.29	-	23.84	-	24.00	-	25.15
24.95	-	25.84	-	25.58	-	23.90	-	25.84	-	24.82	-
-	25.34	-	24.21	-	24.24	-	24.25	-	24.31	-	-
25.10	-	25.45	-	25.26	-	25.49	-	23.83	-	23.97	31.52

Supplemental Figure 5. Example Checkerboard Experiment for adjacent contamination, target Ct 26. These layouts were repeated for all combinations of our Kingfisher Flex RNA extractors and thermocyclers.

Limit of Detection with SARS-CoV-2 Analytical Q Panel 01 (SCV2AQP01-A)

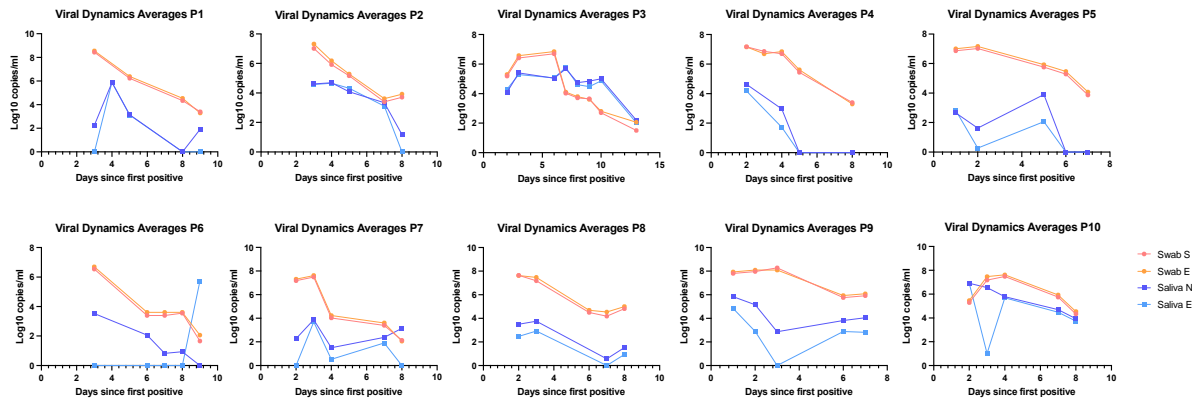


	Equation
N2	$Y = -3.751 * X + 43.34$
E	$Y = -3.257 * X + 40.52$

	R squared
N2	0.9267
E	0.9913

Sample number	ID	Concentration	Log10 Concentration (dC/mL)	N2-SUN 3plex MM				Result
				N2_SUN		E_FAM		
				Mean Ct	SD	Mean Ct	SD	
1	SCV2AQP01-S01	1,000,000.00	6.00	21.24	0.14	20.91	0.15	Positive
2	SCV2AQP01-S02	100,000.00	5.00	24.73	0.22	24.20	0.14	Positive
3	SCV2AQP01-S03	10,000.00	4.00	28.09	0.12	27.48	0.09	Positive
4	SCV2AQP01-S04	5,000.00	3.70	29.25	0.13	28.74	0.22	Positive
5	SCV2AQP01-S05	1,000.00	3.00	31.44	0.32	30.58	0.29	Positive
6	SCV2AQP01-S06	500.00	2.70	32.66	0.28	31.84	0.65	Positive
7	SCV2AQP01-S07	100.00	2.00	36.25	3.78	33.73	0.85	Positive
8	SCV2AQP01-S08	50.00	1.70	37.88	1.09	35.23	0.67	Positive
9	Qnostics '10'	25.00	1.40	37.84	2.85	35.86	0.11	Positive
10	SCV2AQP01-S09	0 (Negative)	-	-	-	-	-	Negative

Supplemental Figure 6. Limit of detection in KCL TEST employing a commercial standard. The Qnostics panel used (SARS-CoV-2 Analytical Q Panel 01: SCV2AQP01-A) is a viral suspension which was extracted and amplified as per our sample pipeline. The standards provided range in concentrations between 1 million and 50 digital copies/mL. The lowest standard available was diluted further to provide a sample with approximately 25 copies/mL. Extractions and RT-qPCRs were repeated n=6 times. All 6 replicates showed amplification of at least one of the targets (N2 or E) for all concentrations up to 25 copies/mL. At the lowest concentration, 25 copies/mL, amplification for both targets (N2 and E) were only detected in 1 out of 6 replicates and at 50 copies/mL on 3 out of 6 replicates. There were more replicates with amplification of N2 compared to E. The mean Ct for each concentration can be seen in the table below. The mean Ct values for E and N2 between 25 and 50 copies/mL were 35 and 38, respectively.



Supplemental Figure 7. Viral dynamics comparing combined nose and throat swab vs saliva. We observed a general trend towards having less copies per mL in saliva as compared with swabs.

Supplemental Tables

Target Thresholds	
N2	0.02
E	0.02
RNAseP	0.02

Supplemental Table 1. Thresholds employed in In-house Triplex SARS-COV-2 Real Time PCR. Thresholds set to determine Ct values after RT-qPCR.

TARGET	Positive	Positive at LoD	Negative	Inhibitory /Void	Inconclusive
N2 and E	<36 for both targets	>36 for both targets	Undetermined		
N2 or E	<36 for one target				≥36 for one target
RNAse P	<26.5	<26.5	<26.5	≥26.5	<26.5

Supplemental Table 2. Key to interpret our RT-qPCR results.

	Beckman Kit	Homebrew
Number of values	980	980
Positive	61	66
Negative	907	906
Inconclusive	8	7
Void	4	1

Supplemental Table 3. Comparison of homebrew vs Beckman extraction. Sample characteristics and number of detected positives/negatives and voids.