

Supplementary Information

Supplementary Table 1: Genomic targets and primers for the droplet digital PCR testing of the 20p.11.2 deletions.

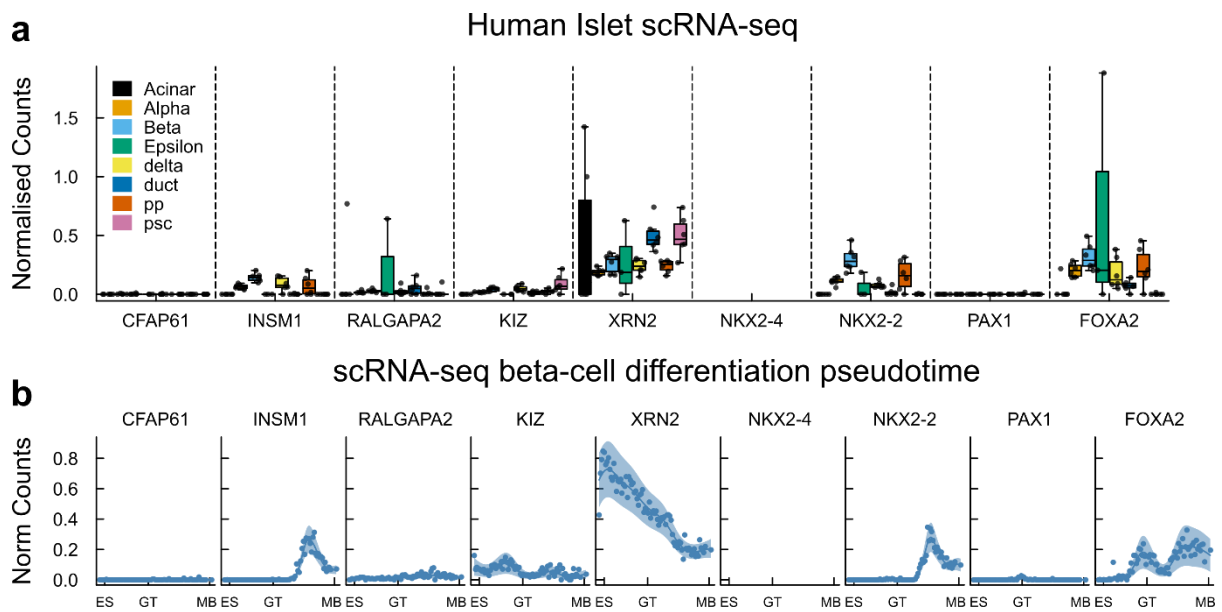
GRCh37 genomic coordinates	Forward	Reverse
chr20:17930867-17930972	TTGTGTGAAAGCTGACAAAATG	CAAGTCTTTTTATCCAAACACAGC
chr20:18794590-18794685	GCTTCCCAGTGTTTCAGGAC	TGGTGATGTCCAGCTGAAAG
chr20:19956252-19956341	ACTTCGGGTGCTTAGTGACG	GGATGGTCTGCAGCATGTC
chr20:21687223-21687326	GCTGCGTGAGCAAGATCC	CTTGACCACGTTGGGAGTG
chr20:22262921-22263030	AAGGACATGAATGACAAGATC	GAGCTTGATGGAACAATCACC
chr20:22381210-22381300	TTTGCTCCTTTTGACTGCTG	ACCCATGTGTTTCATCCACTG
chr20:22441027-22441122	TGAGTGGCAAACACCTGAAC	CAAGGCCTCTTGAGGTATGC
chr20:22550245-22550351	GCCTGGAAATTTGTCTGAGC	TTGCAATGTCTGTGCAGGTC
chr20:22564830-22564927	TTTAAACTGCCATGCACTCG	CTCGGGCTCTGCATAGTAGC
chr20:23370596-23370687	GCTTTGGTTCTTGATTCAGC	TCAATGGCTTTCTGGTACTGC
chr20:24565487-24565591	TGCAGAGCGACTACTCAAGC	AGAAGCAGCAGAGCATGGAG

Supplemental Table 2: Table describing all public genomic datasets used in this study.
 ES – embryonic stem, DE – definitive endoderm, GT – gut tube, PP – pancreatic progenitor.

Accession	DOI	Description	Cell	Target
GSE149148	doi.org/10.7554/eLife.59067	ATAC-seq, ChIP-seq for TFs over pancreatic differentiation	ES, DE, GT, PP1, PP2	FOXA2, ATAC
E-MTAB-1919	doi.org/10.1038/ng.2870	ChIP-seq for TFs in islets	Islets	CTCF, FOXA2, H2AZ, H3K27ac, MAFB, NKX2_2, NKX6_1, PDX1
E-MTAB-1990, E-MTAB-3061	doi.org/10.1038/ncb3160	ChIP-seq for TFs liver buds	LiverBud,	FOXA2
GSE148368	doi.org/10.1038/s41467-021-26950-0	ChIP-seq for TFs in pancreatic and liver differentiation	GT, HP	FOXA2
GSE160472	doi.org/10.1038/s41588-021-00823-0	Single nuclei ATAC-seq in islets	Islets	ATAC
GSE101207	doi.org/10.1016/j.celrep.2019.02.043	Single cell RNA-seq in islets	Islets	
GSE143783	doi.org/10.1038/s42255-020-00314-2	Single cell RNA-seq of beta-like cell differentiation, abundances projected on pseudotime available in ref's Supplementary Table 4	ES cell to beta-like cell differentiation	

Supplementary Table 3: Summary of clinical features and genetic findings in individuals with 20p11.2 deletions. Genetic coordinates relate to GRCh37. * denotes the total genomic region disrupted in this patient which includes an inverted region (details provided in the main text).

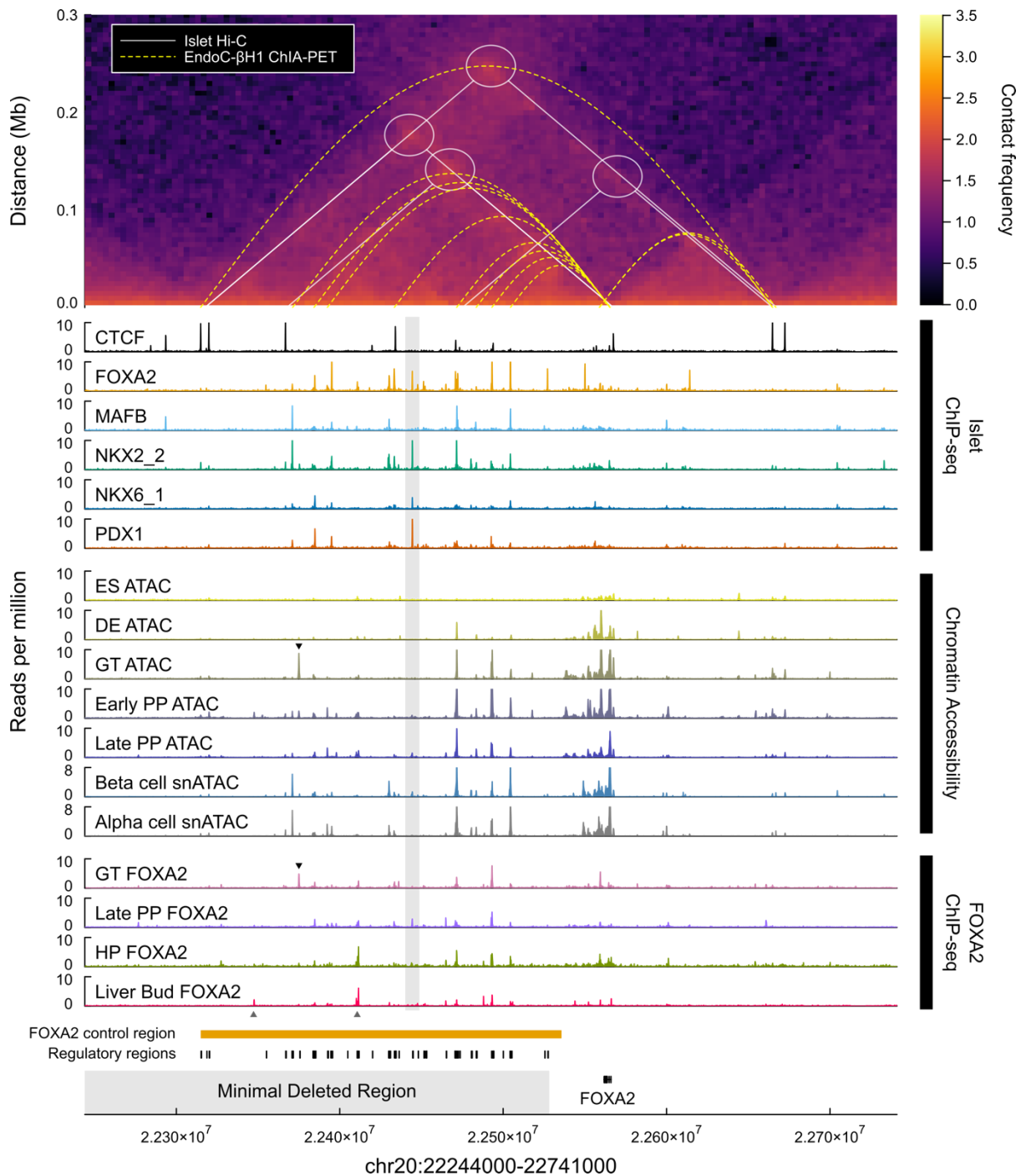
	Patient 1	Patient 2	Patient 3	Patient 4	Patient 5
Coordinates of 20p.11.2 deletions	Chr20:20158646-24080787	Chr20:19434987-22528253	Chr20:19507014-22525896*	Chr20:16400000-24400000	Ch20:18200000-22600000
Age at Presentation of HI	<1 week	<6months	<1 year	<1 week	<1 week
Glucose (mmol/L) in the presence of detectable insulin	≤3	≤3	≤3	≤3	≤3
Syndromic Features	Yes	Yes	Yes	Yes	Yes
Additional features shared by more than one individual	Developmental delay	Developmental delay Facial dysmorphism	Developmental delay Facial dysmorphism	None	Developmental delay Facial dysmorphism



Supplementary Figure 1: Expression of genes partially or fully deleted by minimal deleted region.

a. Human islet single-cell RNA-seq (scRNA-seq) (GSE101207 [1]) expression data of the 8 genes whose sequence is disrupted and FOXA2. Data points give normalised counts of 6 independent donors. Boxplot central lines give the median, boxes span interquartile range, and whiskers extend to the furthest point within 1.5x IQR of the box. Order of cell types (left to right) matches order of legend (top to bottom).

b. scRNA-seq expression over pancreatic cell differentiation from embryonic stem (ES) cells to maturing beta-cells (MB), mapped onto a beta-cell differentiation pseudotime [2] that includes gut tube stage (GT). scRNA-seq data-points on pseudotime shown with Gaussian process regression, line and shaded region mark posterior Gaussian process median and 95% confidence intervals.



Supplementary Figure 2: Regulatory activity of FOXA2 control region.

Human islet Hi-C contact frequencies, transcription factor binding in multiple cell types and chromatin accessibility show regulatory activity of FOXA2 control region (orange bar).

Top: Heatmap gives contact frequencies of human islet Hi-C (5 kb bins) [3], white lines and circles describe CTCF-CTCF chromatin loops called in same study. Yellow dotted lines mark EndoC-βH1 RNA Pol II ChIA-PET enhancer-promoter loops (GSM3333915 [4]), highlighting contact between individual transcription factor binding sites and *FOXA2* promoter.

Bottom: islet chromatin immunoprecipitation followed by sequencing (ChIP-seq) data [5]; chromatin accessibility data over pancreatic cell differentiation [6], ES – embryonic stem, DE – definitive endoderm, GT – gut tube, PP – pancreatic progenitor; single nuclei assay for transposase-accessible chromatin sequencing (snATAC) of human islets showing alpha and beta cell clusters [7], (beta_1 and alpha_1 clusters from original study shown); FOXA2 ChIP-seq from *in vitro* differentiation gut tube (GT), pancreatic progenitors (PP), and hepatic progenitors (HP) [8], and *in vivo* in liver bud [9].

Individual regulatory regions shown strong contact with FOXA2 promoter by Hi-C and RNA Pol II ChIA-PET, activity of regulatory regions varies by factor and cell type. Beta-cell specific regulatory region, marked by grey vertical bar. FOXA2 ChIP-seq shows varied binding of FOXA2 at its own control region across differentiation and between pancreas and liver. Black down triangle (▼) marks gut-tube specific regulatory region by chromatin accessibility and FOXA2 binding. Grey up triangle (▲) marks liver dominant binding of FOXA2.

Supplementary references

1. Fang, Z., et al., *Single-Cell Heterogeneity Analysis and CRISPR Screen Identify Key β -Cell-Specific Disease Genes*. Cell Rep, 2019. **26**(11): p. 3132-3144.e7.
2. Weng, C., et al., *Single-cell lineage analysis reveals extensive multimodal transcriptional control during directed beta-cell differentiation*. Nat Metab, 2020. **2**(12): p. 1443-1458.
3. Greenwald, W.W., et al., *Pancreatic islet chromatin accessibility and conformation reveals distal enhancer networks of type 2 diabetes risk*. Nat Commun, 2019. **10**(1): p. 2078.
4. Lawlor, N., et al., *Multimic Profiling Identifies cis-Regulatory Networks Underlying Human Pancreatic β Cell Identity and Function*. Cell Rep, 2019. **26**(3): p. 788-801.e6.
5. Pasquali, L., et al., *Pancreatic islet enhancer clusters enriched in type 2 diabetes risk-associated variants*. Nat Genet, 2014. **46**(2): p. 136-143.
6. Geusz, R.J., et al., *Pancreatic progenitor epigenome maps prioritize type 2 diabetes risk genes with roles in development*. Elife, 2021. **10**.
7. Chiou, J., et al., *Single-cell chromatin accessibility identifies pancreatic islet cell type- and state-specific regulatory programs of diabetes risk*. Nat Genet, 2021. **53**(4): p. 455-466.
8. Geusz, R.J., et al., *Sequence logic at enhancers governs a dual mechanism of endodermal organ fate induction by FOXA pioneer factors*. Nat Commun, 2021. **12**(1): p. 6636.
9. Cebola, I., et al., *TEAD and YAP regulate the enhancer network of human embryonic pancreatic progenitors*. Nat Cell Biol, 2015. **17**(5): p. 615-626.