

## Characterization and Genome Sequencing of a Novel Lytic Bacteriophage Infecting Hospital-Associated Carbapenem-Resistant *Klebsiella pneumoniae* Strain from Dhaka, Bangladesh

Fahad Khan<sup>a,b</sup>, Mohammad Sami Salman Bhuiyan<sup>a,b</sup>, Syeda Naushin Tabassum<sup>a</sup>, Md. Sakib Abrar Hossain<sup>a</sup>, Aura Rahman<sup>a</sup>, Abdus Sadique<sup>a</sup>, Abdullah All Jaber<sup>b</sup>, Fariza Shams<sup>b</sup>, Sudhakar Bhandare<sup>c</sup>, Maqsd Hossain<sup>a,b\*</sup>

<sup>a</sup> NSU Genome Research Institute (NGRI), North South University, Dhaka, Bangladesh

<sup>b</sup> Department of Biochemistry & Microbiology, North South University, Dhaka, Bangladesh

<sup>c</sup> School of Veterinary Medicine and Science, University of Nottingham, UK

\*Corresponding author

Maqsd Hossain

Email address of corresponding author: [muhammad.maqsud@northsouth.edu](mailto:muhammad.maqsud@northsouth.edu)

Email addresses of authors:

Fahad Khan: [fahadkhanbd911@gmail.com](mailto:fahadkhanbd911@gmail.com)

Mohammad Sami Salman Bhuiyan: [sami.salman.bd@gmail.com](mailto:sami.salman.bd@gmail.com)

Syeda Naushin Tabassum: [naushintabu@gmail.com](mailto:naushintabu@gmail.com)

Md. Sakib Abrar Hossain: [blsakib@gmail.com](mailto:blsakib@gmail.com)

Aura Rahman: [aurarahman4@gmail.com](mailto:aurarahman4@gmail.com)

Abdus Sadique: [sadique004@gmail.com](mailto:sadique004@gmail.com)

Abdullah All Jaber: [mradnanjaber@gmail.com](mailto:mradnanjaber@gmail.com)

Fariza Shams: [fariza.shams@northsouth.edu](mailto:fariza.shams@northsouth.edu)

Sudhakar Bhandare: [sudhakar.bhandare@nottingham.ac.uk](mailto:sudhakar.bhandare@nottingham.ac.uk)

Maqsd Hossain: [muhammad.maqsud@northsouth.edu](mailto:muhammad.maqsud@northsouth.edu)

## Abstract

**Background:** Multidrug-resistant bacterial pathogens pose a grave threat to global health, with *Klebsiella pneumoniae* being a particular concern due to its hypervariable extracellular matrix capsule and frequent development of extended-spectrum  $\beta$ -lactamases and other antibiotic defenses. Treating *K. pneumoniae*-induced infections with antibiotics is becoming increasingly challenging, necessitating the development of new approaches to address this problem. Phages have emerged as a promising alternative to antibiotics due to their high host specificity, abundance in nature, and evolvability. However, their host specificity makes it difficult to target highly diverse bacterial species using phage therapy.

**Methods:** In this study, a *K. pneumoniae* bacteriophage was characterized using double-agar overlay (DLA), host range testing, and Oxford Nanopore Technologies (ONT) MinION long-read sequencer for whole genome sequencing.

**Results:** The phage was isolated from a hospital sewage drain and showed activity against multi-drug resistant *K. pneumoniae*, and showed extensive activity against strains from Dhaka, Bangladesh. Sequence analysis confirmed that the phage belonged to the family *Siphoviridae*, subfamily Unclassified *Webervirus*.

**Conclusion:** The findings of this study highlight the potential of sewage samples as a rich source of bacteriophages against medically important pathogens. Further studies on the biological characteristics of this *K. pneumoniae* bacteriophage could yield valuable insights into the development of a potential therapeutic agent for *K. pneumoniae* specific infections. It is worth noting that although the viruses were only found in sewage from places with increasing reports of *K. pneumoniae* infections, such as public hospitals, they hold promise for addressing the growing problem of multidrug-resistant bacterial pathogens.

**Keywords:** *Klebsiella pneumoniae*, Bacteriophage, Phage Therapy, Antimicrobial Resistance, Nosocomial Infection



## Introduction

*Klebsiella pneumoniae* (Kp) is a facultative anaerobic and gram-negative bacterium that belongs to the genus *Klebsiella* and the *Enterobacterales* group. *K. pneumoniae* is most commonly found in the human body's upper respiratory tract and intestines [1]. It is one of the most common pathogens responsible for nosocomial infections, which include urinary tract infections, pneumonia, septicemia, and soft tissue infections [2]. These infections are caused by *K. pneumoniae* in the elderly, infants, and immunocompromised patients. Earlier it was the extended-spectrum  $\beta$ -lactamases (ESBL) resistant *K. pneumoniae* strains that were the most common drug-resistant strains of *K. pneumoniae*. However, due to the wide use of carbapenems, Carbapenem-resistant *K. pneumoniae* (CRKP) has been on the rise. As a result, carbapenem resistance in *K. pneumoniae* is frequently associated with antimicrobial resistance to other antibiotic classes, making treatment of infections challenging [3]. The Center for Disease Control and Prevention (CDC) and the European Center for Disease Prevention and Control have jointly categorized MDR, extensively drug-resistant (XDR), and pandrug-resistant (PDR) bacteria [4] and *K. pneumoniae* strains have been classified as XDR and are rapidly emerging as PDR by acquiring resistance to tigecycline and polymyxin antibiotics [5]. Antimicrobial resistance (AMR) is a major problem in Asia and, recently, Bangladesh has shown a high prevalence of carbapenem-resistant organisms [6]. Among the carbapenemase genes, NDM-producing strains have been detected along with oxacillinase-48-like producing strains [3]. The emergence of hypervirulent and antibiotic-resistant strains emphasizes the critical need for effective anti-pathogen strategies to prevent its spread.

Bacteriophage therapy is emerging as a promising treatment option to combat antibiotic-resistant bacterial infections. Bacteriophages, also known as phages, are naturally occurring bacterial viruses that can specifically infect and kill bacteria [7]. Phage therapy has gained renewed interest due to the growing problem of antimicrobial resistance and the lack of effective treatment options [10]. Studies on animal models have shown the efficacy of bacteriophages in treating infections caused by *K. pneumoniae*. For instance, in mouse models, bacteriophage therapy provided significant protection against respiratory and other infections caused by *K. pneumoniae*, such as liver abscesses and bacteremia [8, 9]. These promising findings highlight the potential of

bacteriophage therapy as an effective alternative to antibiotics for the treatment of *K. pneumoniae* infections.

The article presents the genome sequence of a *K. pneumoniae* bacteriophage that was isolated from a hospital sewage drain located at the Evercare Hospital in Dhaka, Bangladesh. The phage was named *Klebsiella* phage mfs (Accession Number: OP611406) and was propagated using *K. pneumoniae* strains that were previously collected from hospital samples from different regions in Dhaka, Bangladesh [10]. The isolation of phages from hospital sewage samples highlights the potential of these sources as rich and accessible reservoirs of bacteriophages that can be utilized for the development of novel therapeutics against medically significant pathogens such as *K. pneumoniae*.

## Methodology

### Bacterial isolation and antimicrobial susceptibility assay

In this study, clinical strains of *Klebsiella spp.* (NGCE-311, NGCE-327, NGCE-472, NGCE-635, NGCE-636, NGCE-637, NGCE-639, NGCE-645, NGCE-706, NGCE-707, NGCE-711, NGCE-920) were isolated and grown from different clinical samples collected at DCIMCH and Shaheed Suhrawardy Medical College and Hospital (SSMCH). *Escherichia coli* was used as a control. To determine the antibiotic susceptibility of the *Klebsiella* strains, an antibiotic susceptibility test was performed using the Kirby-Bauer disk diffusion method. The selected antibiotics for the susceptibility test included commonly prescribed antibiotics in Bangladesh, such as amoxicillin, ceftriaxone, and meropenem. The results of the antibiotic susceptibility test were interpreted according to the Clinical & Laboratory Standards Institute: CLSI guidelines.

### Isolation of phages

*Klebsiella* phage mfs was isolated during enrichment from sewage water collected from a hospital sewage drain at Evercare Hospital in Dhaka, Bangladesh. The sewage water appeared sediment-filled, turbid, and slightly green, with calm water. The isolation procedure began with the addition of a final concentration of 0.05 M SM buffer (pH 7.0) to the sample, followed by the addition of 1 M NaCl. The mixture was incubated for 60 minutes at +37°C at 100 rpm in an environmental shaker incubator. The supernatant was then removed and centrifuged (14000 rpm, 10 minutes) using a Beckman Coulter centrifuge, US. The pellet was dissolved in 1 ml of 0.1 M Tris-HCl buffer following the removal of the supernatant (pH 7.0). Subsequently, the resulting suspension was filtered through 1.2 µm, 0.45 µm, and 0.22 µm filters (MF-Millipore, US). The filtrate was then stored at -20°C.

Phage amplification and purification step was carried out by combining 250 ml of Luria Bertani (LB) broth and 10 ml of *K. pneumoniae* cells cultured overnight. The mixture was then placed in separate shaking flasks, each containing *K. pneumoniae* cells from a distinct strain (NGCE-311, NGCE-327, NGCE-472, NGCE-635, NGCE-636, NGCE-637, NGCE-639, NGCE-645, NGCE-706, NGCE-707, NGCE-711, NGCE-920). Afterwards, the flasks were incubated for 6 hours at +37°C and 100 rpm on an Environmental Shaker-Incubator. Next, 1 ml of bacteriophage filtrate was added to each flask and the mixture was incubated overnight. The following morning, the lysis

of the bacterial culture was observed. The contents of the flasks were then centrifuged and filtered, and the resulting filtrates were refrigerated at 4°C.

The cells of *K. pneumoniae* were suspended in a physiological salt solution. The concentration of cells in suspension is about 10<sup>9</sup> CFU per milliliter (colony-forming units per ml). Then, 10<sup>-1</sup> to 10<sup>-5</sup> serial dilutions of each of the four obtained filtrates containing bacteriophages in physiological salt solution were prepared. In tubes containing soft agar (0.6 percent), 0.2 ml of culture and 0.1 ml of a specific dilution of the bacteriophage were added and mixed. The resulting mixture was distributed on Petri dishes containing solid nutrient agar and incubated for 24 hours at 37°C. Following the incubation period, the plaques obtained were evaluated.

Using the double-layer technique, the lytic spectrum of the accumulated bacteriophage was evaluated. Seven strains of *K. pneumoniae* were used as test cultures. The cells of *K. pneumoniae* were suspended in a physiological salt solution. The cell concentration in suspension was approximately 10<sup>9</sup> CFU per milliliter. 0.2 ml of culture was added to tubes containing soft agar (0.6%), mixed, and then poured onto nutrient agar-coated Petri dishes. The phage suspension was then spotted on the soft agar in several dilutions. The samples were then incubated at 37°C for 18 to 24 hours. Plaque morphology (halos or no halo) is recorded, and images are taken.

### **Host range testing**

To determine the novel phage's host range, spot tests in top-agar semi-solidified media were performed. Drops of 1 µl of each phage were spot inoculated onto bacterial lawns of various clinical isolates and incubated for 24 hours at 37°C to allow plaques to form. Zones of bacterial lawn clearing, suggesting cell lysis, were categorized as follows: (1) identifiable plaques, (2) total bacterial lawn clearing, (3) turbid bacterial lawn, or (4) no effect. The presence or absence of halos, as well as the reduced turbidity of the bacterial lawn encircling plaques or clearings, were also noted. In addition, we inoculated 10<sup>5</sup> PFU of phage into bacterial cultures during their exponential growth phase (log phase) and incubated the cultures at 37°C in a plate reader (Multiskan FC, Thermo Fisher Scientific) for 10 hours to determine the strength of lysis using time-lapse turbidity (OD) measurements every 10 minutes.

### **Extraction of phage genomic DNA**

The Favorgen Viral DNA/RNA Kit (Origin: Taiwan) was used for the process of phage DNA extraction following the manufacturer's instructions. A number of centrifugation processes were carried out with great care because the supernatant was initially taken, but in order to obtain the DNA, it was necessary to collect the pellet at the very end. To prevent degradation, DNA samples were frozen at a temperature of -20°C and kept in the freezer. DNA concentrations were measured by NanoDrop spectrophotometer, Model ND-1000, Origin: Thermo Fisher Scientific, USA.

### **Phage genome library preparation, sequencing, and assembly**

In this study, the approach was undertaken to obtain a comprehensive understanding of the sample. A Rapid PCR Barcoding Kit (SQK-RPB004) from Oxford Nanopore Technologies (Minion Mk1C) was used for library preparation.

The library preparation protocol used was the simplest library preparation protocol that allowed sequencing from low DNA input and uses PCR to enable enough data to be generated. The process ensures the quality of DNA is checked thoroughly for experimental success, and begins with the addition of Fragmentation mix. The fragmentation mix cleaves and add the transposase adapter to the genomic DNA. This is then attached to barcoded rapid attachment primer, which then undergoes PCR. After PCR, the products are cleaned using the Agencourt AMPure XP, and rapid 1D sequencing adapters are attached to DNA ends, and the DNA is ready to be loaded on the primed flow cells.

The libraries were sequenced using Minion Mk1C R9.4 flowcells, and real-time basecalling was performed to generate fastq files. The necessary reagents and flow cells were sourced from ONT (Littlemore, Oxford, United Kingdom). The raw fastq files were assembled using the Flye v2.9 assemblers for de novo assembly with default settings to obtain high-quality contigs suitable for downstream analysis [11]. The contigs were then polished using Racon v1.4.20 [15] with the MinION reads as the consensus.

The assembled contigs were mapped back to the reference bacteriophage using Contiguator v2.7 [16], and the full-length contigs of the bacteriophage were identified. The contigs fasta files were used for downstream bioinformatics analysis, which included gene prediction, annotation, and functional analysis. The average nucleotide identity (ANI) of the phage was determined using OrthoANIb (OrthoANI using BLAST) [12]. The genome with an ANI >95% was designated as



the same species. Furthermore, functional annotation was performed using the Rapid Annotation using Subsystem Technology (RAST) server [18].

### **Genomic Analysis**

The genome of the phage was annotated using Prokka [13] and PHASTER [14], and a comprehensive diagram was generated using the user-friendly SnapGene® software (GSL Biotech; available at [snapgene.com](http://snapgene.com)). The phage taxonomy was determined by adding the phage isolate genome to the VIPtree database [15] and performing BLASTn and tBLASTn analyses against NCBI [16].

## Results

### Resistance profiling of selected isolates:

Top of form Twelve *K. pneumoniae* isolates were collected from diverse clinical sources including blood (n=2), tracheal aspirate (n=1), urine (n=6), and sputum (n=3) (Figure 1). The strains originated from three diagnostic/healthcare centers located in Dhaka, Bangladesh: Dhaka Central International Medical College and Hospital (DCIMCH), and Shaheed Suhrawardy Medical College and Hospital (SSMCH). Based on antibiotic susceptibility profiles, all twelve isolates were multidrug resistant (MDR) where six of them were found to be extensively drug-resistant (XDR). The antibiotic susceptibility testing results revealed that all isolates were resistant to amoxicillin, cefepime, cefixime, ceftriaxone, cefuroxime, ciprofloxacin, trimethoprim, and tetracycline. Among the twelve isolates, the number of isolates that were resistant to piperacillin, meropenem, were 4, 6, and 8, respectively. Among the significant isolates identified, NGCE-635 stands out as a significant isolate obtained from the urine of a female patient. This strain was resistant to numerous antibiotics, including amoxicillin, cefepime, cefixime, ceftriaxone, cefuroxime, chloramphenicol, ciprofloxacin, meropenem, nitrofurantoin, piperacillin/tazobactam, polymixin B, trimethoprim, and tetracycline. It produced extended-spectrum beta-lactamase (ESBL), signifying increased resistance to beta-lactam antibiotics. Another noteworthy strain is NGCE-637, which was isolated from the blood of a female patient. This strain was resistant to a number of antibiotics, including amoxicillin, cefepime, cefixime, ceftriaxone, cefuroxime, chloramphenicol, ciprofloxacin, meropenem, nitrofurantoin, and piperacillin/tazobactam. It also tested positive for production of ESBLs. These strains exemplify the emergence of multidrug-resistant *Klebsiella pneumoniae* strains, which are resistant to multiple antibiotic classes, including crucial ones such as carbapenems. The presence of ESBL enzymes in these isolates bolsters their resistance even further. Notably, the data does not specify the presence or absence of the carbapenem-resistant New Delhi metallo-beta-lactamase (NDM) gene in these strains.

A Circos plot showing the resistance profile of all twelve isolates is presented in Figure 1 [17].

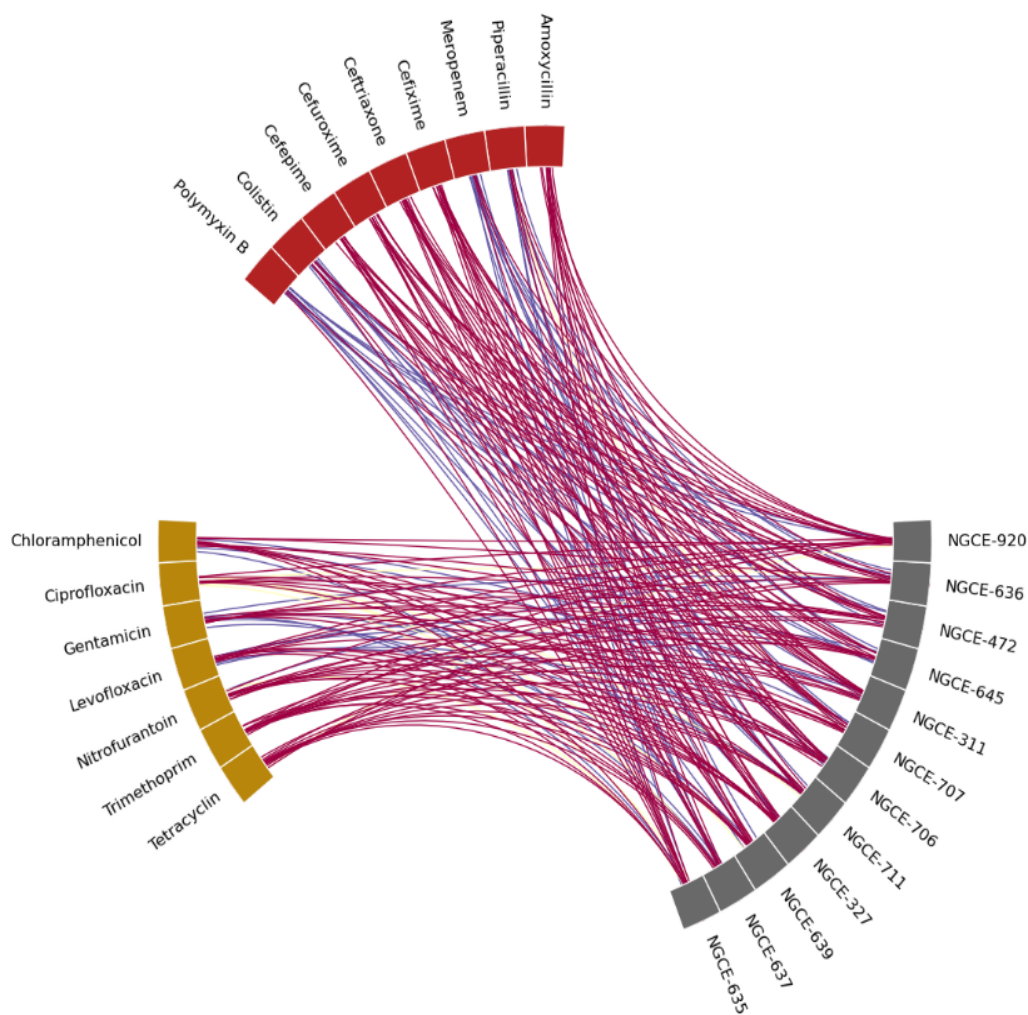


Figure 1. Circos plot for the resistance profile across the *K. pneumoniae* isolates used in the study. Red and Gold denotes the  $\beta$ -lactams and Carbapenems respectively, which were tested against the selected isolates denoted in Gray.

### Phage isolation

In Dhaka, Bangladesh, hospital sewage water was used to isolate the lysate phage, *Klebsiella* phage mfs, which was designed to treat *K. pneumoniae*. This is the first time a phage has been reported to have been isolated from hospital effluent in Bangladesh. The process of isolation involved a number of distinct procedures and techniques. The phage isolation protocol included multiple steps

to assure the phage's purification and enrichment. Initially, samples of hospital sewage water were collected and filtered to remove larger particles and detritus. The resulting filtrate was then combined with a *K. pneumoniae* strains host strain and incubated under conditions conducive to phage-host interactions.

Following the incubation period, the mixture was centrifuged to separate the phage-containing supernatant from the bacterial cells. To eradicate any remaining bacterial cells, the phage-containing supernatant was further filtered using a membrane filter with a specific pore size. Using shallow halo rings, the filtered supernatant was subjected to a series of purification processes. This technique involved applying the supernatant to a solid agar medium containing a lawn of the host strain, and then repeatedly applying incised rings to the formed plaques. Each application of the rings enabled the purification of a single phage by isolating individual plaques. Through this purification procedure, a 2-mm-diameter, transparent plaque with a smooth edge and a uniform dimension was produced.

To evaluate the lytic activity of *Klebsiella* phage mfs, a controlled experiment was conducted. A *K. pneumoniae* log-phase culture was inoculated with a concentration of  $1 \times 10^5$  plaque-forming units (PFU) of the phage. Changes in optical density at 600 nm (OD<sub>600</sub>) were measured to determine the lytic efficacy of the phage.

The provided information provides insight into the isolation and purification of phages, emphasizing the use of specific techniques such as filtration, centrifugation, and the application of shallow halo rings. The experimental design for determining the lytic activity of the phage centered on measuring OD<sub>600</sub> changes. However, additional information regarding statistical analysis and the number of replicates used would improve the study's clarity.

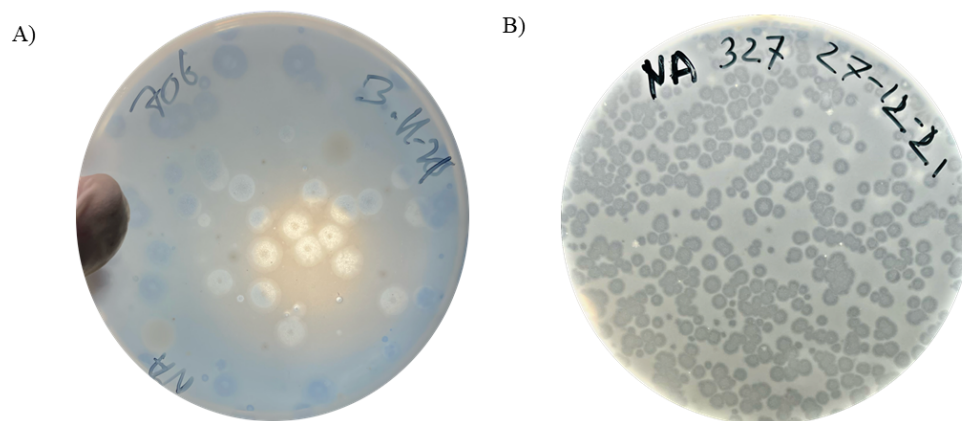


Figure 2. Plaque assay of the novel *Klebsiella* phage mfs. A) represents halo rings produced against NGCE 706, while B) represents lytic activity against another close strain, NGCE 327. Plaques were allowed to form overnight at 37 °C.

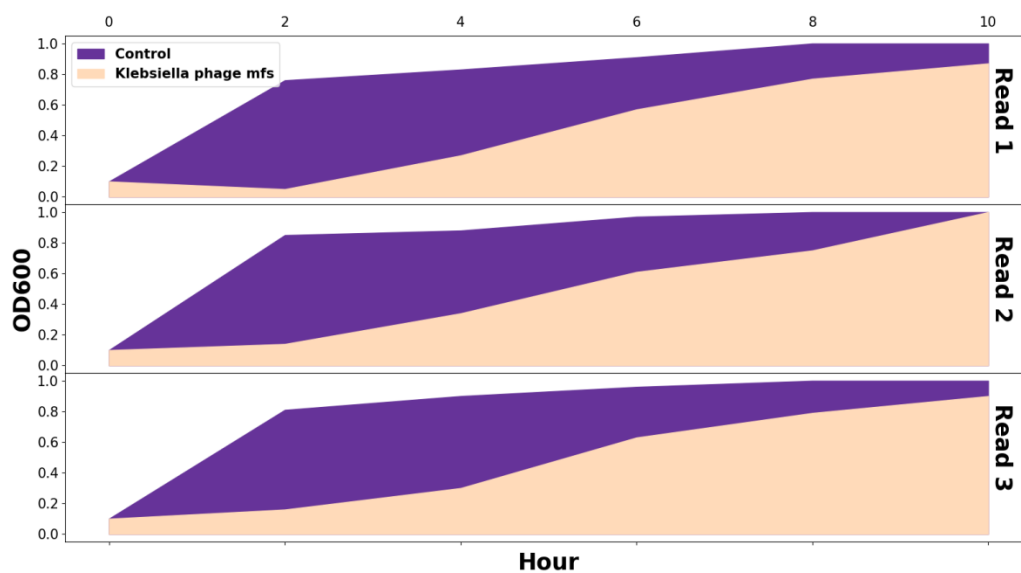


Figure 3. Lysis assay. Optical density of cultures of *K. pneumoniae* belonging to isolate 706 (in pink) and the reference strain of *E. coli* (in blue). Cultures were inoculated with  $10^5$  PFU in three replicate assays for three reads.

### **Determination of phage host range**

The host range of *Klebsiella* phage mfs was evaluated against twelve clinical strains of *K. pneumoniae* isolated from different hospitals in Dhaka, Bangladesh (Supplementary table 1). To determine the lytic activity of various phage combinations, each test was repeated three times. The results showed that *Klebsiella* phage mfs was effective against all of the bacterial strains tested (71% effectiveness).

### **Genome Sequencing and Sequence Analysis**

The complete sequencing of the phage infecting *K. pneumoniae* was carried out utilizing the Oxford Nanopore MinION platform. The assembled read was found to have a size of 48,780 base pairs (bp) with a GC content of 52.02%. The genome was linear and intact, and the whole sequence of *Klebsiella* phage mfs (Accession Number: OP611406) was obtained. The genome annotation identified a total of 105 protein-coding sequences (CDS), which include 93 phage proteins and 12 hypothetical proteins. Furthermore, the genome of *Klebsiella* phage mfs was found to contain u-spanin proteins, which are phage lysis proteins required for the destruction of the outer membrane.

Table 1. *De novo* assembly of the novel *Klebsiella* phage mfs genome.

<i>Klebsiella</i> Phage	Size (bp)	GC Content (%)	Number of CDS	Nucleotide Pairwise Identity (%)			
				MZ634351.1	OP030905.1	MZ634348.1	OV877766.1
<i>Klebsiella</i> phage mfs (OP611406)	48780	52.02	94	97%	97%	97%	97%

Sequence analysis confirmed that the phage infecting *K. pneumoniae* belonged to the family Siphoviridae and subfamily Unclassified Webervirus. The use of BLAST analysis further identified that these *Klebsiella* phages were part of the genus Webervirus (as shown in Figure 3). Multiple sequence alignment revealed that *Klebsiella* phage mfs was collinear and highly conserved compared to other weberviruses, specifically with phages *Klebsiella* phage PWKp20 (Accession Number: MZ634351.1) and Bacteriophage sp. isolate 1201\_113983 (Accession Number: OP030905.1). Average nucleotide identity (ANI) values between isolated *Klebsiella* phages mfs and other weberviruses ranged from 81% to 97% (as shown in Table 1), with *Klebsiella* phage PWKp20 being the closest previously characterized bacteriophage according to ANI values, isolated in Sweden. To obtain a maximum likelihood phylogeny, a multiple whole-genome sequence alignment of Drulisvirus and *Klebsiella* phages  $\pi$ VLC1-4 (58,184 positions) was utilized. This phylogeny indicated that phages  $\pi$ VLC1-4 formed a monophyletic group (as depicted in Figure 4)

## Bioinformatics Analysis

Nucleotide sequences were compared to those in GenBank using BLASTn and BLASTp (Supplementary Table 2). A BLASTn of the assembled long read found the genome to be 96.78% similar to *Klebsiella* phage PWKp20 (Accession Number: MZ634351.1). The genome had an average of 96.34% ANI with other *K. pneumoniae* phages. High pairwise nucleotide identities (from 93% to 97%) were also observed. This shows the genome to be a close relative of the *K. pneumoniae* phages.

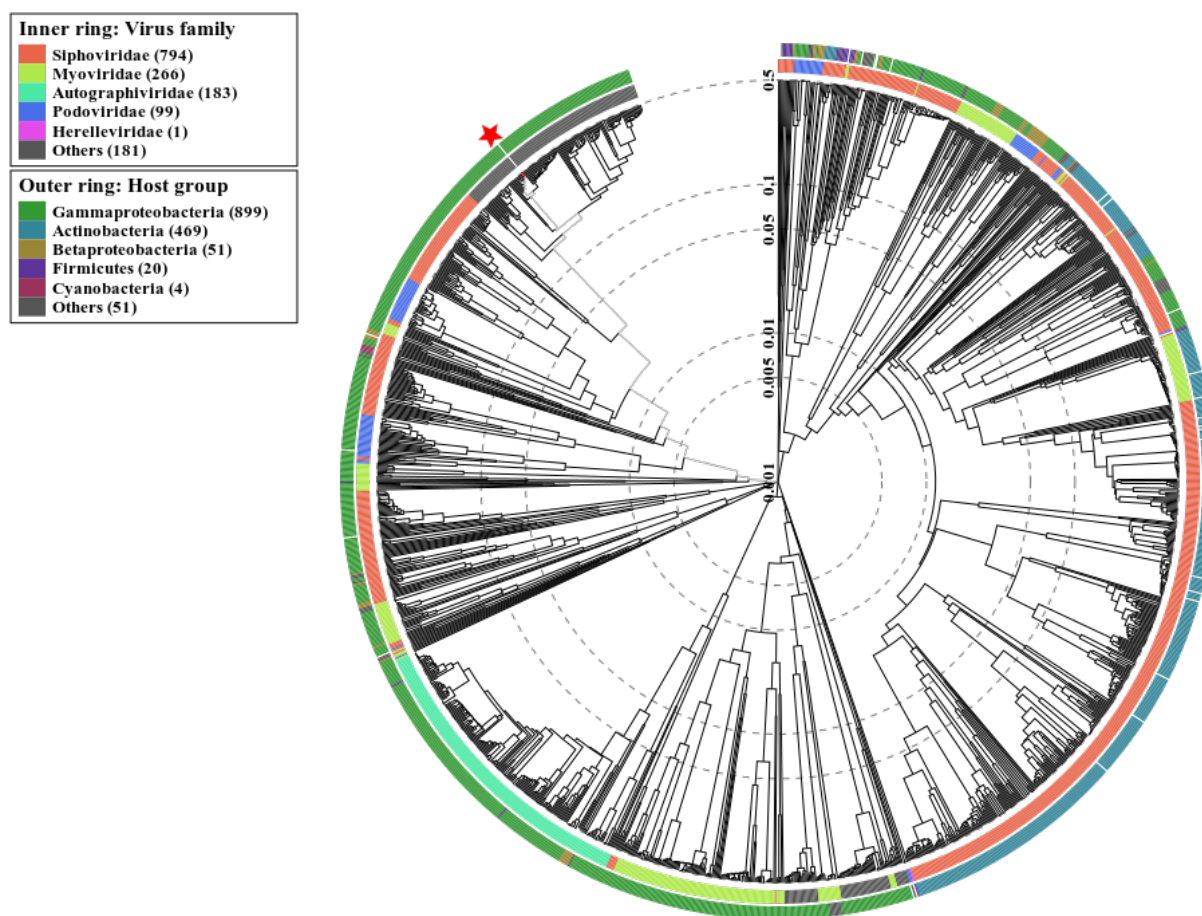


Figure 4. Circular phylogenetic tree based on proteomic analysis generated by VIPTree [15]. Red stars represent *Klebsiella* phage mfs detected in this study. Beside our *Klebsiella* phage mfs, this





Figure 5. Gene map of *Klebsiella* phage mfs. Different colored arrows depict predicted CDSs coding different functions: green, DNA packaging; cyan, hypothetical protein (hp); purple/pink, DNA replication, transcription, and metabolism function; black, phage structure; blue, tail structure. The genome map was constructed using SnapGene software.

*Klebsiella* phage mfs has a fast adsorption time, is highly stable over a wide pH and temperature range, and lacks virulence, lysogenic, and antimicrobial resistance genes. The phage was perfectly stable in chloroform, but it completely lost its ability to infect when exposed to ethanol.

## Discussion

The emergence of ESBL-producing and/or carbapenemase-producing *Klebsiella* strains as a major cause of human diseases has triggered the search for alternative therapeutic options such as phages. While defined bacteriophages are commonly used as antibacterial treatments, their effectiveness is often limited against newly identified bacterial strains. Therefore, phage cocktails are utilized to minimize global resistance by the target bacterium, which has prompted the identification of additional potential therapeutic phages [7, 18].

In this study, a novel *K. pneumoniae* phage genome was isolated from hospital sewage water in Dhaka, Bangladesh. Although viruses were only found in the samples from locations with increasing reports of *K. pneumoniae* infections, such as public hospitals, this study highlights sewage samples as a promising source of bacteriophages against medically important pathogens. Further exploration of environmental samples may lead to the discovery of more broadly acting phages. The article describes the phage species, with certain features annotated via prokka. Whole-genome sequencing was also performed to evaluate the phage protein content.

To fully characterize the phage genetically and physiologically, additional research will be required. For instance, Pulse Field Gel Electrophoresis (PFGE) can be used to estimate the length of a phage genome, generate a restriction digestion profile, and clone and sequence the phage genome to gain a comprehensive understanding of the genes involved in the phage life cycle [19]. Moreover, Transmission electron microscopy (TEM) documentation of phage morphology is also necessary for phage classification, following International Committee on Taxonomy of Viruses guidelines. Protein profiling using sodium dodecyl sulfate-polyacrylamide gel electrophoresis (SDS-PAGE) is required to determine the amount of structural proteins present in the bacterium. Further genomic analysis results will allow for determination of virulence factors, as well as a better understanding of the propagation and mode of action of the isolated phage.

Similar to this study, other researchers have identified novel phages from diverse environmental sources, such as soil, sewage, and fecal samples, which could potentially be used against *K. pneumoniae* strains [22, 23, 24]. Furthermore, some studies have demonstrated the efficacy of phage therapy against carbapenem-resistant *K. pneumoniae* infections in animal models [25, 26].

However, challenges such as bacterial resistance development and the specificity of phages still need to be addressed for effective clinical application.

The high specificity of *Klebsiella* phages and other phages is a double-edged sword. While specificity allows for precise targeting of a particular bacterial pathogen and aids in the prevention of dysbiosis by having little impact on the normal microbiota, it also makes treatment options less straightforward and requires significant effort in characterizing and exploiting natural phage diversity. Despite these challenges, phages hold great promise as a potential alternative to antibiotics for treating *K. pneumoniae* infections, particularly in the era of increasing antimicrobial resistance.

## **Conclusion**

In summary, this study emphasizes the potential utility of sewage samples as a promising source of bacteriophages against medically significant pathogens, particularly in regions with high rates of MDR/XDR and ESBL-producing and/or carbapenemase-producing *Klebsiella* infections. The discovery of a novel *K. pneumoniae* phage genome from hospital sewage water in Dhaka, Bangladesh serves as a positive foundation for the development of phage therapy against this pathogen. While the specificity of *Klebsiella* phages and other phages is beneficial in selectively targeting particular bacterial pathogens and reducing harm to normal microbiota, there is still a need to further explore the natural diversity of phages to identify more broadly acting phages. Future studies can expand on the genomic and physiological characterization of this phage and explore the potential use of phages as diagnostic tools, biosensors, and in bioimaging. In general, the use of phages as a complementary approach to antibiotics in the battle against bacterial infections shows promise and merits further investigation.

## **Data Availability**

The genomic sequence of the novel page has been deposited in GenBank under accession number: OP611406

## **Ethics approval and consent to participate**

Not applicable

## **Availability of data and materials**

All of the data are included in the article.

## **Conflict of Interests**

The authors declare that they have no conflict of interests

## References

1. Luo, K., Tang, J., Qu, Y., Yang, X., Zhang, L., Chen, Z., Kuang, L., Su, M., & Mu, D. (2021). Nosocomial infection by *Klebsiella pneumoniae* among neonates: a molecular epidemiological study. *Journal of Hospital Infection*. <https://doi.org/10.1016/j.jhin.2020.11.028>
2. Podschun, R., & Ullmann, U. (1998). *Klebsiella* spp. as Nosocomial Pathogens: Epidemiology, Taxonomy, Typing Methods, and Pathogenicity Factors. *Clinical Microbiology Reviews*, *11*(4), 589. <https://doi.org/10.1128/CMR.11.4.589>
3. Okanda, T., Haque, A., Koshikawa, T., Islam, A., Huda, Q., Takemura, H., Matsumoto, T., & Nakamura, S. (2021). Characteristics of Carbapenemase-Producing *Klebsiella pneumoniae* Isolated in the Intensive Care Unit of the Largest Tertiary Hospital in Bangladesh. *Frontiers in Microbiology*, *11*, 3357. <https://doi.org/10.3389/FMICB.2020.612020/BIBTEX>
4. Magiorakos, A. P., Srinivasan, A., Carey, R. B., Carmeli, Y., Falagas, M. E., Giske, C. G., Harbarth, S., Hindler, J. F., Kahlmeter, G., Olsson-Liljequist, B., Paterson, D. L., Rice, L. B., Stelling, J., Struelens, M. J., Vatopoulos, A., Weber, J. T., & Monnet, D. L. (2012). Multidrug-resistant, extensively drug-resistant and pandrug-resistant bacteria: An international expert proposal for interim standard definitions for acquired resistance. *Clinical Microbiology and Infection*, *18*(3), 268–281. <https://doi.org/10.1111/j.1469-0691.2011.03570.x>
5. Papadimitriou-Olivgeris, M., Bartzavali, C., Spyropoulou, A., Lambropoulou, A., Sioulas, N., Vamvakopoulou, S., Karpetas, G., Spiliopoulou, I., Vrettos, T., Anastassiou, E. D., Fligou, F., Christofidou, M., & Marangos, M. (2018). Molecular epidemiology and risk factors for colistin- or tigecycline-resistant carbapenemase-producing *Klebsiella pneumoniae* bloodstream infection in critically ill patients during a 7-year period. *Diagnostic Microbiology and Infectious Disease*, *92*(3), 235–240. <https://doi.org/10.1016/J.DIAGMICROBIO.2018.06.001>
6. Saha, K., Kabir, N. D., Islam, M. R., Amin, M. B., Hoque, K. I., Halder, K., Saleh, A. A., Parvez, M. A. K., Begum, K., Alam, M. J., & Islam, M. A. (2022). Isolation and characterisation of carbapenem-resistant *Pseudomonas aeruginosa* from hospital environments in tertiary care hospitals in Dhaka, Bangladesh. *Journal of Global Antimicrobial Resistance*, *30*, 31–37. <https://doi.org/10.1016/J.JGAR.2022.04.008>
7. Lin, D. M., Koskella, B., & Lin, H. C. (2017). Phage therapy: An alternative to antibiotics in the age of multi-drug resistance. *World Journal of Gastrointestinal Pharmacology and Therapeutics*. <https://doi.org/10.4292/wjgpt.v8.i3.162>
8. Chhibber, S., Kaur, S., & Kumari, S. (2008). Therapeutic potential of bacteriophage in treating

- Klebsiella pneumoniae* B5055-mediated lobar pneumonia in mice. *Journal of Medical Microbiology*. <https://doi.org/10.1099/jmm.0.2008/002873-0>
9. Taha, O. A., Connerton, P. L., Connerton, I. F., & El-Shibiny, A. (2018). Bacteriophage ZCKP1: A potential treatment for *Klebsiella pneumoniae* isolated from diabetic foot patients. *Frontiers in Microbiology*, 9(SEP), 2127. <https://doi.org/10.3389/FMICB.2018.02127/BIBTEX>
  10. *Klebsiella phage mfs, complete genome - Nucleotide - NCBI*. (n.d.). Retrieved November 29, 2022, from <https://www.ncbi.nlm.nih.gov/nucleotide/OP611406>
  11. Kolmogorov, M., Yuan, J., Lin, Y., & Pevzner, P. A. (2019). Assembly of long, error-prone reads using repeat graphs. *Nature Biotechnology*. <https://doi.org/10.1038/s41587-019-0072-8>
  12. Yoon, S. H., Ha, S. min, Lim, J., Kwon, S., & Chun, J. (2017). A large-scale evaluation of algorithms to calculate average nucleotide identity. *Antonie van Leeuwenhoek, International Journal of General and Molecular Microbiology*. <https://doi.org/10.1007/s10482-017-0844-4>
  13. Seemann, T. (2014). Prokka: Rapid prokaryotic genome annotation. *Bioinformatics*. <https://doi.org/10.1093/bioinformatics/btu153>
  14. Arndt, D., Grant, J. R., Marcu, A., Sajed, T., Pon, A., Liang, Y., & Wishart, D. S. (2016). PHASTER: a better, faster version of the PHAST phage search tool. *Nucleic Acids Research*. <https://doi.org/10.1093/nar/gkw387>
  15. Nishimura, Y., Yoshida, T., Kuronishi, M., Uehara, H., Ogata, H., & Goto, S. (2017). ViPTree: The viral proteomic tree server. *Bioinformatics*. <https://doi.org/10.1093/bioinformatics/btx157>
  16. Johnson, M., Zaretskaya, I., Raytselis, Y., Merezuk, Y., McGinnis, S., & Madden, T. L. (2008). NCBI BLAST: a better web interface. *Nucleic Acids Research*. <https://doi.org/10.1093/nar/gkn201>
  17. Krzywinski, M., Schein, J., Birol, I., Connors, J., Gascoyne, R., Horsman, D., Jones, S. J., & Marra, M. A. (2009). Circos: An information aesthetic for comparative genomics. *Genome Research*. <https://doi.org/10.1101/gr.092759.109>
  18. Abedon, S. T., Danis-Wlodarczyk, K. M., & Wozniak, D. J. (2021). Phage cocktail development for bacteriophage therapy: Toward improving spectrum of activity breadth and depth. *Pharmaceuticals*. <https://doi.org/10.3390/ph14101019>
  19. Lingohr, E., Frost, S., & Johnson, R. P. (2009). Determination of bacteriophage genome size by pulsed-field gel electrophoresis. *Methods in Molecular Biology (Clifton, N.J.)*. [https://doi.org/10.1007/978-1-60327-565-1\\_3](https://doi.org/10.1007/978-1-60327-565-1_3)
  20. Domingo-Calap, P., Beamud, B., Vienne, J., González-Candelas, F., & Sanjuán, R. (2020). Isolation of four lytic phages infecting *Klebsiella pneumoniae* K22 clinical isolates from Spain. *International Journal of Molecular Sciences*. <https://doi.org/10.3390/ijms21020425>
  21. Calap, P. D. (2018). Phages as Promising Biomedical Tools. *Biomedical Journal of Scientific & Technical Research*. <https://doi.org/10.26717/bjstr.2018.10.001936>
  22. Kutter E. Phage host range and efficiency of plating. *Methods Mol Biol*. 2009;501:141-149.

23. Dąbrowska K, Switała-Jeleń K, Opolski A, Weber-Dąbrowska B, Górski A. Bacteriophage penetration in vertebrates. *J Appl Microbiol.* 2005;98(1):7-13.
24. Riede I, Döhner L. Electron microscopy of phages using the negative staining technique. *Methods Mol Biol.* 2009;501:147-153.
25. Loc-Carrillo C, Abedon ST. Pros and cons of phage therapy. *Bacteriophage.* 2011 Mar;1(2):111-114. doi: 10.4161/bact.1.2.14590. PMID: 22334867; PMCID: PMC3278648.26.
26. Yen, M. et al. A cocktail of three virulent bacteriophages prevents *Vibrio cholerae* infection in animal models. *Nat. Commun.* 8, 14187 doi: 10.1038/ncomms14187 (2017).
27. Austin Hoggarth, Andrew Weaver, Qinqin Pu, Ting Huang, Jacob Schettler, Feng Chen, Xiefang Yuan & Min Wu (2019) Mechanistic research holds promise for bacterial vaccines and phage therapies for *Pseudomonas aeruginosa*, *Drug Design, Development and Therapy*, 13:, 909-924, DOI: 10.2147/DDDT.S189847