

## Supplemental Data

### Measurable Residual *IDH1* before Transplant for Acute Myeloid Leukemia

Gege Gui<sup>1,2\*</sup>, Laura W. Dillon<sup>1\*</sup>, Niveditha Ravindra<sup>1</sup>, Pranay S. Hegde<sup>1</sup>, Georgia Andrew<sup>1</sup>, Devdeep Mukherjee<sup>1</sup>, Zoë Wong<sup>1</sup>, Jeffery Auletta<sup>3,4</sup>, Firas El Chaer<sup>5</sup>, Evan Chen<sup>6</sup>, Yi-Bin Chen<sup>7</sup>, Adam Corner<sup>8</sup>, Steven M. Devine<sup>3</sup>, Sunil Iyer<sup>9</sup>, Antonio Martin Jimenez Jimenez<sup>10</sup>, Marcos J.G. De Lima<sup>4</sup>, Mark R. Litzow<sup>11</sup>, Partow Kebriaei<sup>12</sup>, Stephen R Spellman<sup>3,13</sup>, Scott L. Zeger<sup>2</sup>, Kristin M. Page<sup>3,14</sup>, Christopher S. Hourigan<sup>1,15</sup>

\*GG and LWD contributed equally to this work

<sup>1</sup>Laboratory of Myeloid Malignancies, Hematology Branch, National Heart, Lung, and Blood Institute, National Institutes of Health, Bethesda, MD

<sup>2</sup>Department of Biostatistics, Johns Hopkins Bloomberg School of Public Health, Baltimore, MD

<sup>3</sup>Center for International Blood and Marrow Transplant Research, Minneapolis, MN

<sup>4</sup>The Ohio State University College of Medicine, Columbus, OH

<sup>5</sup>University of Virginia, Charlottesville, VA

<sup>6</sup>Dana-Farber Cancer Institute, Boston, MA

<sup>7</sup>Massachusetts General Hospital, Boston, MA

<sup>8</sup>Bio-Rad Laboratories, Pleasanton, CA

<sup>9</sup>Columbia University Irving Medical Center, New York, NY

<sup>10</sup>Sylvester Comprehensive Cancer Center, Miami, FL

<sup>11</sup>Mayo Clinic, Rochester, MN

<sup>12</sup>The University of Texas MD Anderson Cancer Center, Houston, TX

<sup>13</sup>National Marrow Donor Program, Minneapolis, MN

<sup>14</sup>Medical College of Wisconsin, Milwaukee, WI

<sup>15</sup>Myeloid Malignancies Program, National Institutes of Health, Bethesda, MD

### Table of Contents

Supplemental Methods	Page 2
Supplemental Figure 1. Baseline characteristics for <i>IDH1</i> -mutated AML patients and the association with clinical outcomes after allogeneic hematopoietic cell transplant.	Page 4
Supplemental Figure 2. Site-reported flow cytometry MRD status for <i>IDH1</i> -mutated AML patients and the association with clinical outcomes after allogeneic hematopoietic cell transplant.	Page 5
Supplemental Figure 3. Detection and validation of residual variants in pretransplant blood of <i>IDH1</i> mutated AML patients during complete remission.	Page 6
Supplemental Figure 4. NGS MRD status for <i>IDH1</i> -mutated AML patients and the association with clinical outcomes after allogeneic hematopoietic cell transplant stratified by age and variant allele fraction.	Page 7
Supplemental Figure 5. NGS MRD status for <i>IDH1</i> -mutated AML patients and the association with clinical outcomes after allogeneic hematopoietic cell transplant stratified by baseline mutation groups.	Page 9
Supplemental Figure 6. NGS MRD status for <i>IDH1</i> -mutated AML patients and the association with clinical outcomes after allogeneic hematopoietic cell transplant stratified by conditioning intensity.	Page 10
Supplemental Table 1. <i>IDH1</i> -mutated AML patient baseline clinical characteristics.	Page 11
Supplemental Table 2. Variants detected by next-generation sequencing in the blood of <i>IDH1</i> mutated AML patients prior to transplant conditioning.	Page 12
References	Page 13

## **Supplemental Methods**

### **Patient baseline characteristics**

Patient baseline characteristics included age, sex, race, hematopoietic cell transplant specific comorbidity (HCT-CI), Karnofsky performance status (KPS), secondary AML, European LeukemiaNet (ELN) 2017 risk group, baseline genetics before transplant (*IDH1*, *IDH2*, *KIT*, *NPM1*, *FLT3-TKD*, *FLT3-ITD*), conditioning regimen, graft type, donor group, anti-thymocyte globulin (ATG) usage, and site-reported flow cytometry MRD status.

### **Targeted next-generation sequencing (NGS)**

Genomic DNA was extracted from remission blood and residual variant identified as previously reported.<sup>1</sup> In short, ultrasensitive error-corrected NGS targeting mutational hotspot regions of the *IDH1*, *IDH2*, *KIT*, *NPM1*, and *FLT3* genes was performed utilizing an automated workflow with pre- and post-PCR separation. NGS libraries were sequencing on a NovaSeq 6000 (Illumina) with unique dual indices. Bioinformatic pipelines were used to perform error-corrected variant calling followed by filtering to identify residual disease. Raw FASTQ files are the NCBI Small Reads Archive (SRA) (Accession: PRJNA834073 and PRJNA997373).

### **Digital droplet PCR (ddPCR)**

A subset of 51 *IDH1* variants identified by NGS were orthogonally validated using ddPCR on the Bio-Rad QX200 or QX600 system as previously described.<sup>1</sup>

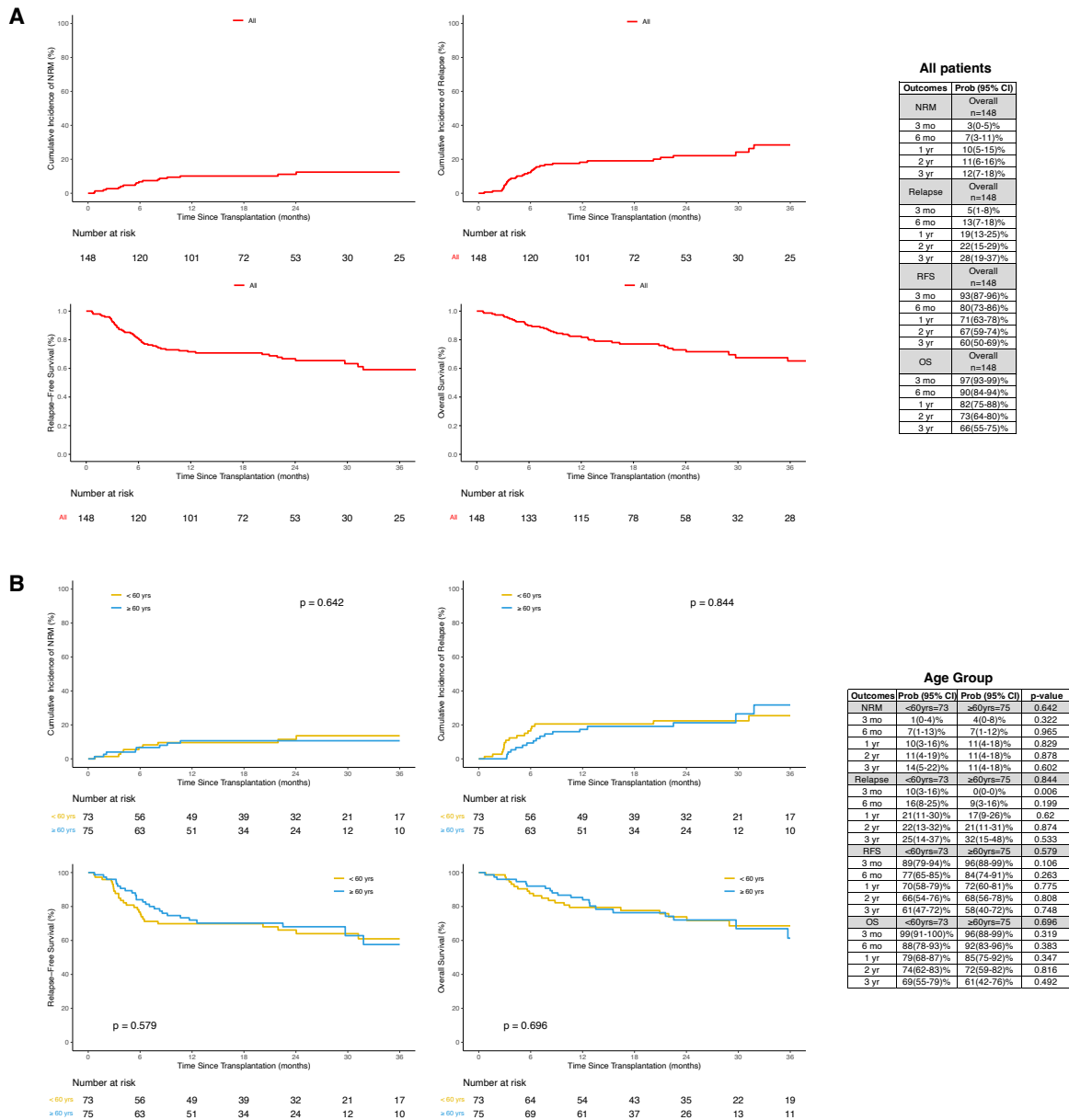
### **Statistical analysis**

Logistic regression was implemented for determining the variables related with NGS *IDH1* MRD status. Overall survival and cumulative incidence of relapse were considered as the primary endpoints, and the follow-up time was collected with day of transplant as time 0. Median follow-

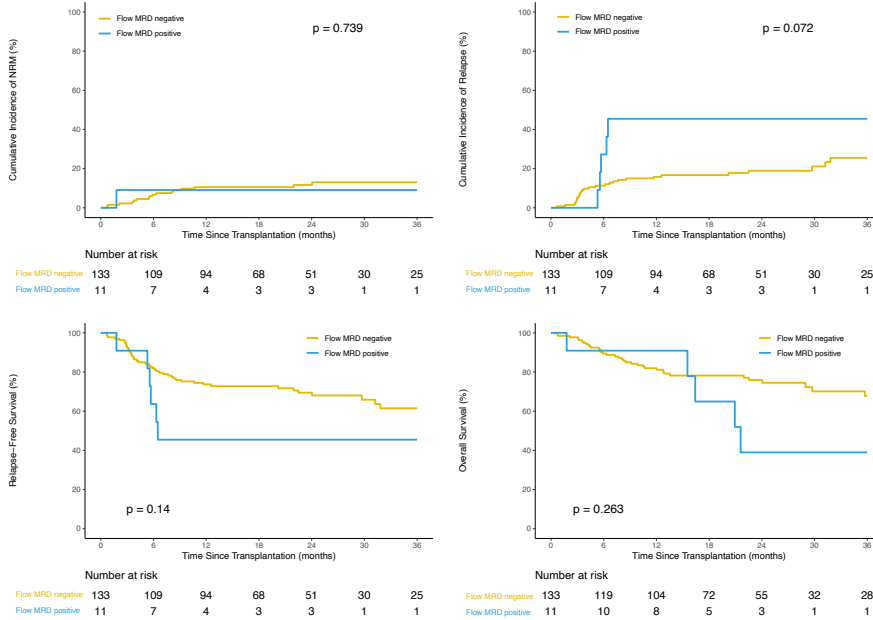
up time was calculated for censored patients. Kaplan-Meier estimation and log rank tests were used to calculate overall survival and relapse-free survival endpoints. Cox proportional hazards models were fitted, with forward selection or Lasso penalty for variable selection, and the proportional hazards assumptions were validated. Fine-Gray regression models were used to examine the cumulative incidence of relapse with transplant related mortality as a competing risk, and Bayesian information criterion (BIC) was used for model selection. Potential interactions between mutation groups and clinical characteristics were tested.

## Supplemental Figure 1. Baseline characteristics for *IDH1*-mutated AML patients and the association with clinical outcomes after allogeneic hematopoietic cell transplant.

Cumulative incidence of non-relapse mortality (NRM, top left) and relapse (top right), relapse-free survival (RFS, bottom left) and overall survival (OS, bottom right) shown at 36 months based on baseline patient characteristics (A) overall and (B) age group (<60yrs or ≥60yrs). Point estimates at different time points are shown in the table (far right). Overall P values: Gray's test for non-relapse mortality (NRM) and relapse; log-rank test for relapse-free survival (RFS) and overall survival (OS). P values for pointwise estimations at different time points: z-test. Confidence interval, CI; Probability, prob; Month, mo; Year, yr.



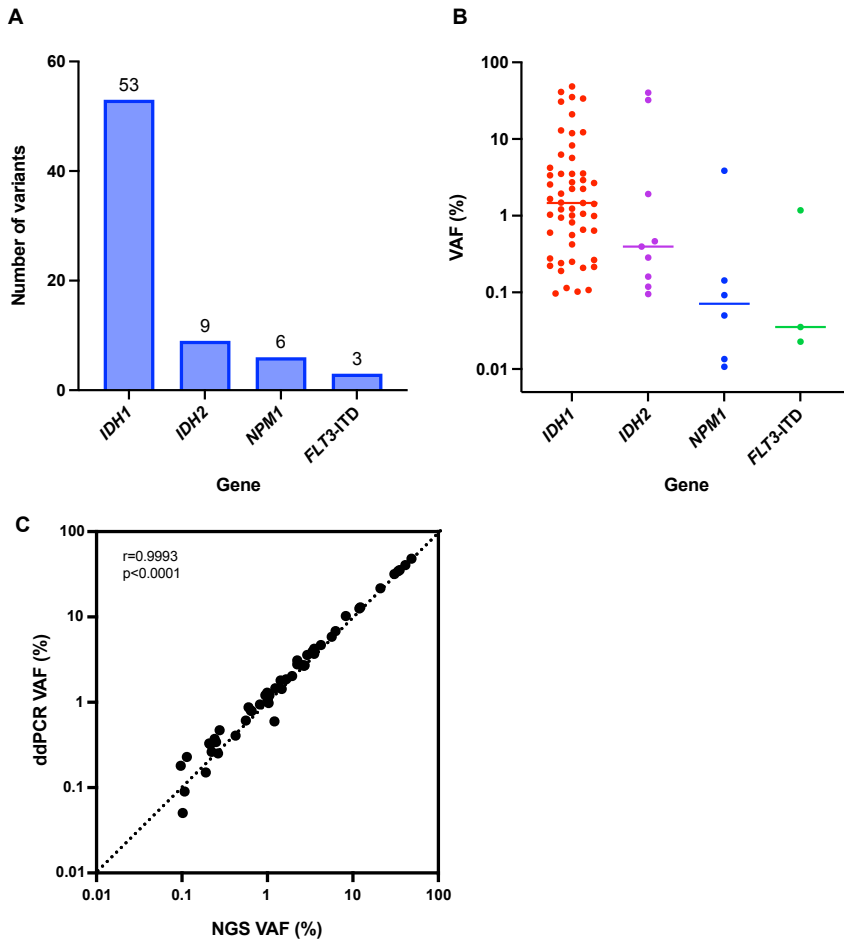
**Supplemental Figure 2. Site-reported flow cytometry MRD status for *IDH1*-mutated AML patients and the association with clinical outcomes after allogeneic hematopoietic cell transplant.** Cumulative incidence of non-relapse mortality (NRM, top left) and relapse (top right), relapse-free survival (RFS, bottom left) and overall survival (OS, bottom right) shown at 36 months for patients with data available for residual disease by flow cytometry as reported by the treatment site. Point estimates at different time points are shown in the table (far right). Overall P values: Gray's test for non-relapse mortality (NRM) and relapse; log-rank test for relapse-free survival (RFS) and overall survival (OS). P values for pointwise estimations at different time points: z-test. Confidence interval, CI; Probability, prob; Month, mo; Year, yr.



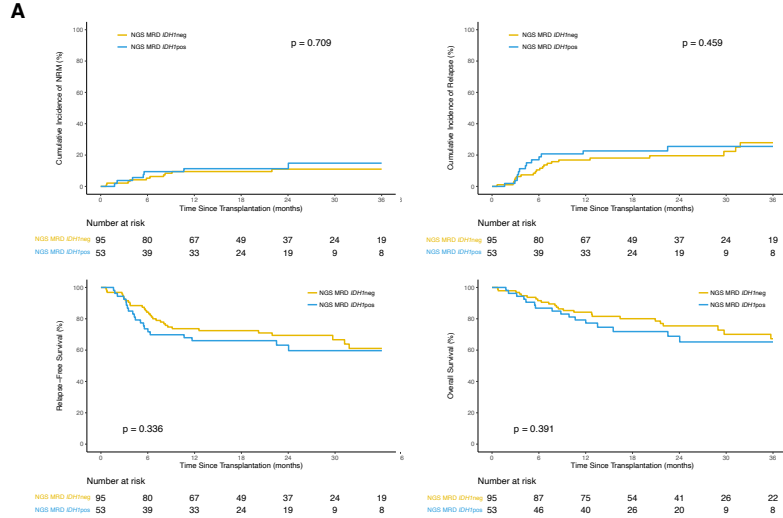
**Site-Reported Flow Cytometry MRD**

Outcomes	Prob (95% CI)	Prob (95% CI)	p-value	
NRM	Flow MRD negative n = 133	Flow MRD Positive n = 11	0.739	
	3 mo	2(0-5)%	9(0-27)%	0.457
	6 mo	7(2-11)%	9(0-27)%	0.804
	1 yr	11(5-16)%	9(0-27)%	0.88
	2 yr	12(6-17)%	9(0-27)%	0.789
3 yr	13(7-19)%	9(0-27)%	0.682	
Relapse	Flow MRD negative n = 133	Flow MRD Positive n = 11	0.072	
	3 mo	5(1-9)%	0(0-0)%	0.007
	6 mo	11(6-17)%	27(0-55)%	0.271
	1 yr	16(10-22)%	45(14-77)%	0.071
	2 yr	19(12-26)%	45(14-77)%	0.108
3 yr	26(16-35)%	45(14-77)%	0.237	
RFS	Flow MRD negative n = 133	Flow MRD Positive n = 11	0.14	
	3 mo	32(26-36)%	91(51-99)%	0.861
	6 mo	82(74-88)%	64(30-85)%	0.218
	1 yr	74(65-80)%	45(17-71)%	0.068
	2 yr	69(60-77)%	45(17-71)%	0.124
3 yr	61(50-71)%	45(17-71)%	0.315	
OS	Flow MRD negative n = 133	Flow MRD Positive n = 11	0.263	
	3 mo	98(93-99)%	91(51-99)%	0.435
	6 mo	89(83-94)%	91(51-99)%	0.874
	1 yr	82(74-88)%	91(51-99)%	0.335
	2 yr	76(67-83)%	39(9-69)%	0.038
3 yr	68(56-77)%	39(9-69)%	0.113	

**Supplemental Figure 3. Detection of residual variants in pretransplant blood of *IDH1* mutated AML patients during complete remission.** (A) The total number and (B) variant allele fraction (VAF) of variants per gene as detected by targeted next-generation sequencing (NGS) during remission prior to transplant in the peripheral blood of *IDH1* mutated AML patients. (C) A total of 51 of the 53 detected variants in *IDH1* had a validated assay available for orthogonal validation by digital droplet PCR (ddPCR). The VAF of *IDH1* variants detected by NGS (x-axis) were plotted versus ddPCR (y-axis), with a value of equivalence line displayed as a dotted line. A significant correlation was observed in the VAF as detected by NGS compared to ddPCR with an orthogonal validation rate of 100%. The Pearson correlation coefficient is shown on the inset of the graph.

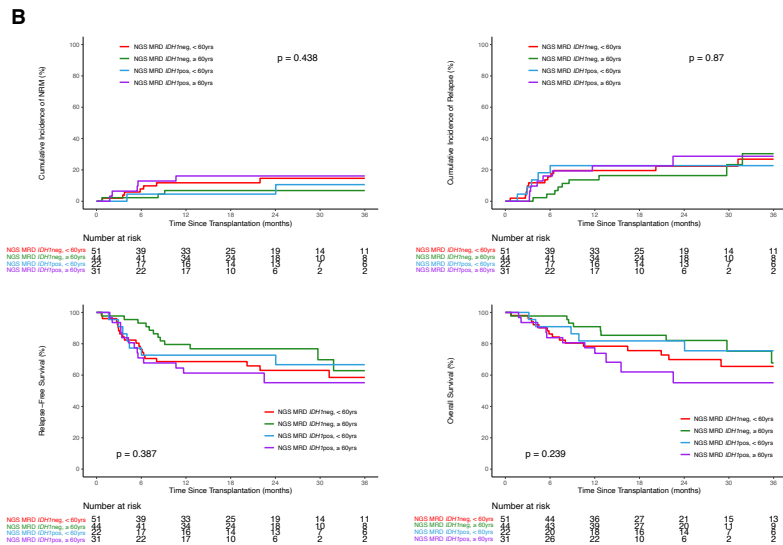


**Supplemental Figure 4. NGS MRD status for *IDH1*-mutated AML patients and the association with clinical outcomes after allogeneic hematopoietic cell transplant stratified by age and variant allele fraction (VAF).** Cumulative incidence of non-relapse mortality (NRM, top left) and relapse (top right), relapse-free survival (RFS, bottom left) and overall survival (OS, bottom right) shown at 36 months based on *IDH1* NGS-MRD status for (A) all patients (B) patients defined by age group (<60yrs or ≥60yrs), and (C) *IDH1* NGS-MRD VAF groups (negative, 0%<VAF<2.5%, VAF≥2.5%). Point estimates at different time points are shown in the table (far right). Overall P values: Gray's test for non-relapse mortality (NRM) and relapse; log-rank test for relapse-free survival (RFS) and overall survival (OS). P values for pointwise estimations at different time points: z-test. Confidence interval, CI; Probability, prob; Month, mo; Year, yr; pos, positive; neg, negative.



**NGS MRD *IDH1***

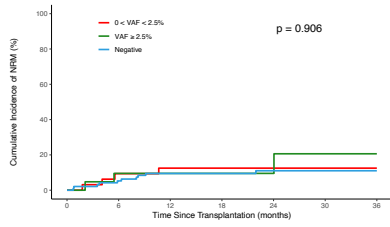
Outcomes	Prob (95% CI)	Prob (95% CI)	p-value
NRM	NGS MRD <i>IDH1</i> neg n=95	NGS MRD <i>IDH1</i> pos n=53	0.709
3 mo	2(0-5)%	4(0-9)%	0.582
6 mo	5(1-10)%	9(1-17)%	0.232
1 yr	9(4-15)%	11(3-20)%	0.729
2 yr	11(4-18)%	11(3-20)%	0.956
3 yr	11(4-18)%	15(2-23)%	0.554
Relapse	NGS MRD <i>IDH1</i> neg n=95	NGS MRD <i>IDH1</i> pos n=53	0.459
3 mo	5(1-10)%	4(0-9)%	0.671
6 mo	11(4-17)%	1(7-27)%	0.29
1 yr	17(9-24)%	23(11-34)%	0.406
2 yr	20(11-28)%	26(13-38)%	0.432
3 yr	28(16-40)%	26(13-38)%	0.283
RFS	NGS MRD <i>IDH1</i> neg n=95	NGS MRD <i>IDH1</i> pos n=53	0.336
3 mo	93(85-90)%	92(81-97)%	0.969
6 mo	84(75-90)%	74(60-83)%	0.138
1 yr	74(64-81)%	66(52-77)%	0.334
2 yr	69(59-78)%	63(49-75)%	0.457
3 yr	61(48-72)%	60(44-72)%	0.882
OS	NGS MRD <i>IDH1</i> neg n=95	NGS MRD <i>IDH1</i> pos n=53	0.391
3 mo	88(82-90)%	86(80-89)%	0.579
6 mo	82(84-96)%	87(74-93)%	0.38
1 yr	84(75-90)%	79(66-88)%	0.459
2 yr	75(65-83)%	69(53-80)%	0.43
3 yr	67(54-78)%	65(49-78)%	0.832



**NGS MRD *IDH1* and Age Group**

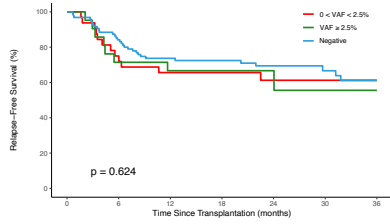
Outcomes	Prob (95% CI)	Prob (95% CI)	Prob (95% CI)	Prob (95% CI)	p-value
NRM	NGS MRD <i>IDH1</i> neg <60yrs: n=51	NGS MRD <i>IDH1</i> neg ≥60yrs: n=44	NGS MRD <i>IDH1</i> pos <60yrs: n=22	NGS MRD <i>IDH1</i> pos ≥60yrs: n=31	0.438
3 mo	2(0-6)%	2(0-7)%	0(0-0)%	6(0-15)%	0.254
6 mo	8(0-15)%	2(0-7)%	5(0-13)%	13(1-25)%	0.308
1 yr	12(3-21)%	7(0-14)%	5(0-13)%	16(3-29)%	0.435
2 yr	15(4-25)%	7(0-14)%	5(0-13)%	16(3-29)%	0.317
3 yr	15(4-25)%	7(0-14)%	11(0-25)%	16(3-29)%	0.528
Relapse	NGS MRD <i>IDH1</i> neg <60yrs: n=51	NGS MRD <i>IDH1</i> neg ≥60yrs: n=44	NGS MRD <i>IDH1</i> pos <60yrs: n=22	NGS MRD <i>IDH1</i> pos ≥60yrs: n=31	0.87
3 mo	10(2-18)%	0(0-0)%	9(0-21)%	0(0-0)%	NA
6 mo	16(6-26)%	5(0-11)%	16(2-30)%	16(3-29)%	0.116
1 yr	20(9-31)%	14(3-24)%	23(5-41)%	23(8-38)%	0.708
2 yr	22(10-34)%	16(5-28)%	23(5-41)%	29(10-47)%	0.705
3 yr	27(13-41)%	30(10-51)%	23(5-41)%	29(10-47)%	0.95
RFS	NGS MRD <i>IDH1</i> neg <60yrs: n=51	NGS MRD <i>IDH1</i> neg ≥60yrs: n=44	NGS MRD <i>IDH1</i> pos <60yrs: n=22	NGS MRD <i>IDH1</i> pos ≥60yrs: n=31	0.387
3 mo	98(78-95)%	98(85-100)%	91(68-98)%	94(77-98)%	0.233
6 mo	78(62-90)%	93(80-98)%	77(54-90)%	71(52-84)%	0.015
1 yr	69(54-79)%	80(64-89)%	73(49-87)%	61(42-76)%	0.348
2 yr	63(48-75)%	77(61-87)%	73(49-87)%	55(34-72)%	0.24
3 yr	59(42-72)%	63(39-79)%	67(42-83)%	55(34-72)%	0.86
OS	NGS MRD <i>IDH1</i> neg <60yrs: n=51	NGS MRD <i>IDH1</i> neg ≥60yrs: n=44	NGS MRD <i>IDH1</i> pos <60yrs: n=22	NGS MRD <i>IDH1</i> pos ≥60yrs: n=31	0.239
3 mo	98(87-100)%	98(85-100)%	100%	94(77-98)%	<0.001
6 mo	86(73-93)%	98(85-100)%	91(68-98)%	84(66-93)%	0.048
1 yr	76(64-87)%	91(78-96)%	82(59-93)%	77(59-89)%	0.232
2 yr	70(54-81)%	80(66-91)%	80(59-93)%	55(31-74)%	0.127
3 yr	66(48-78)%	68(43-84)%	76(50-89)%	55(31-74)%	0.586

C



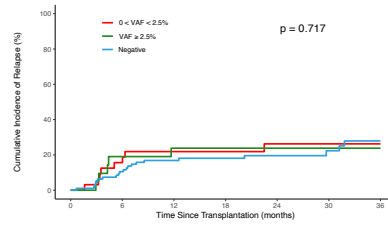
Number at risk

	0 < VAF < 2.5%	VAF ≥ 2.5%	Negative
32	24	21	16
21	15	12	8
95	80	67	49
			37
			6
			3
			3
			24
			19



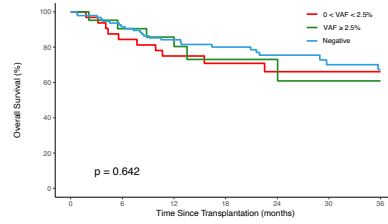
Number at risk

	0 < VAF < 2.5%	VAF ≥ 2.5%	Negative
32	24	21	16
21	15	12	8
95	80	67	49
			37
			6
			3
			3
			24
			19



Number at risk

	0 < VAF < 2.5%	VAF ≥ 2.5%	Negative
32	24	21	16
21	15	12	8
95	80	67	49
			37
			6
			3
			3
			24
			19



Number at risk

	0 < VAF < 2.5%	VAF ≥ 2.5%	Negative
32	27	24	17
21	19	16	9
95	87	75	54
			41
			6
			3
			3
			26
			22

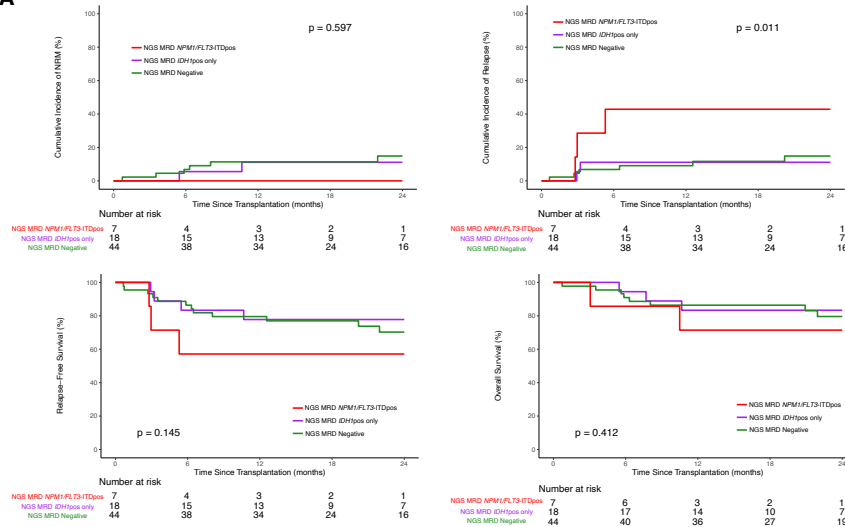
VAF Groups

Outcomes	0 < VAF < 2.5% = 32	VAF ≥ 2.5% = 21	Negative = 95	p-value
<b>NRM</b>				<b>0.906</b>
3 mo	3(0-9)%	5(0-14)%	2(0-5)%	0.845
6 mo	9(0-20)%	10(0-22)%	5(1-10)%	0.576
1 yr	12(1-24)%	10(0-22)%	9(4-15)%	0.9
2 yr	12(1-24)%	10(0-22)%	11(4-18)%	0.945
3 yr	12(1-24)%	21(0-45)%	11(4-18)%	0.756
<b>Relapse</b>				<b>0.717</b>
3 mo	3(0-9)%	5(0-14)%	5(1-10)%	0.658
6 mo	16(3-28)%	19(2-36)%	11(4-17)%	0.561
1 yr	22(7-38)%	24(5-43)%	17(9-24)%	0.708
2 yr	26(10-42)%	24(5-43)%	20(11-28)%	0.743
3 yr	26(10-42)%	24(5-43)%	26(16-40)%	0.935
<b>RFS</b>				<b>0.624</b>
3 mo	94(77-98)%	90(67-98)%	93(85-96)%	0.913
6 mo	75(56-87)%	71(47-86)%	84(75-90)%	0.319
1 yr	66(47-79)%	67(43-83)%	74(64-81)%	0.626
2 yr	61(42-76)%	67(43-83)%	68(59-78)%	0.722
3 yr	61(42-76)%	56(27-77)%	61(48-72)%	0.926
<b>OS</b>				<b>0.642</b>
3 mo	97(80-100)%	95(71-99)%	98(92-99)%	0.84
6 mo	84(66-95)%	90(67-98)%	92(84-96)%	0.591
1 yr	75(56-87)%	86(62-95)%	84(75-90)%	0.516
2 yr	66(46-80)%	73(46-88)%	75(65-83)%	0.655
3 yr	66(46-80)%	61(29-82)%	67(54-78)%	0.918



**Supplemental Figure 5. NGS MRD status for *IDH1*-mutated AML patients and the association with clinical outcomes after allogeneic hematopoietic cell transplant stratified by baseline mutation groups.** Cumulative incidence of non-relapse mortality (NRM, top left) and relapse (top right), relapse-free survival (RFS, bottom left) and overall survival (OS, bottom right) shown at 24 months based on baseline patient mutation groups (A) *IDH1*-mutated AML patients with either *NPM1* and/or *FLT3*-ITD mutations at baseline (n=69) and (B) *IDH1*-mutated AML patients without *NPM1* or *FLT3*-ITD mutations at baseline (n=79). Point estimates at different time points are shown in the table (far right). Overall P values: Gray's test for non-relapse mortality (NRM) and relapse; log-rank test for relapse-free survival (RFS) and overall survival (OS). P values for pointwise estimations at different time points: z-test. Confidence interval, CI; Probability, prob; Month, mo; Year, yr; pos, positive; neg, negative.

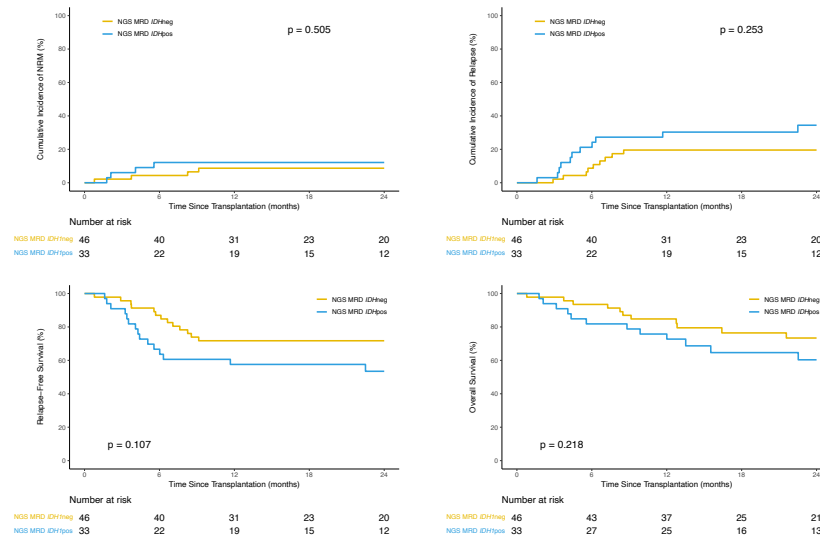
**A**



***NPM1/FLT3*-ITD Baseline Patients NGS MRD Status**

Outcomes	Prob (95% CI)	Prob (95% CI)	Prob (95% CI)	p-value
<b>NRM</b>	<i>NPM1/FLT3-ITD</i> pos=7	<i>IDH1</i> pos only=18	<i>MRD</i> Negative=44	0.597
3 mo	0(0-0)%	0(0-0)%	2(0-7)%	NA
6 mo	0(0-0)%	0(0-0)%	7(0-14)%	0.127
1 yr	0(0-0)%	1(1(0-26)%	1(1(0-21)%	0.022
2 yr	0(0-0)%	1(1(0-26)%	1(1(0-26)%	0.014
<b>Relapse</b>	<i>NPM1/FLT3-ITD</i> pos=7	<i>IDH1</i> pos only=18	<i>MRD</i> Negative=44	0.011
3 mo	23(0-45)%	6(0-16)%	5(0-11)%	0.444
6 mo	43(2-83)%	1(1(0-26)%	7(0-14)%	0.214
1 yr	43(2-83)%	1(1(0-26)%	8(0-18)%	0.277
2 yr	43(2-83)%	1(1(0-26)%	15(4-26)%	0.353
<b>RFS</b>	<i>NPM1/FLT3-ITD</i> pos=7	<i>IDH1</i> pos only=18	<i>MRD</i> Negative=44	0.145
3 mo	71(26-92)%	94(67-99)%	93(80-98)%	0.434
6 mo	57(17-84)%	83(57-94)%	86(72-94)%	0.32
1 yr	57(17-84)%	78(51-91)%	80(64-88)%	0.522
2 yr	57(17-84)%	78(51-91)%	70(53-82)%	0.588
<b>OS</b>	<i>NPM1/FLT3-ITD</i> pos=7	<i>IDH1</i> pos only=18	<i>MRD</i> Negative=44	0.412
3 mo	100%	100%	98(85-100)%	NA
6 mo	86(33-99)%	84(67-99)%	91(78-98)%	0.781
1 yr	71(26-92)%	83(57-94)%	86(73-94)%	0.684
2 yr	71(26-92)%	83(57-94)%	80(63-89)%	0.819

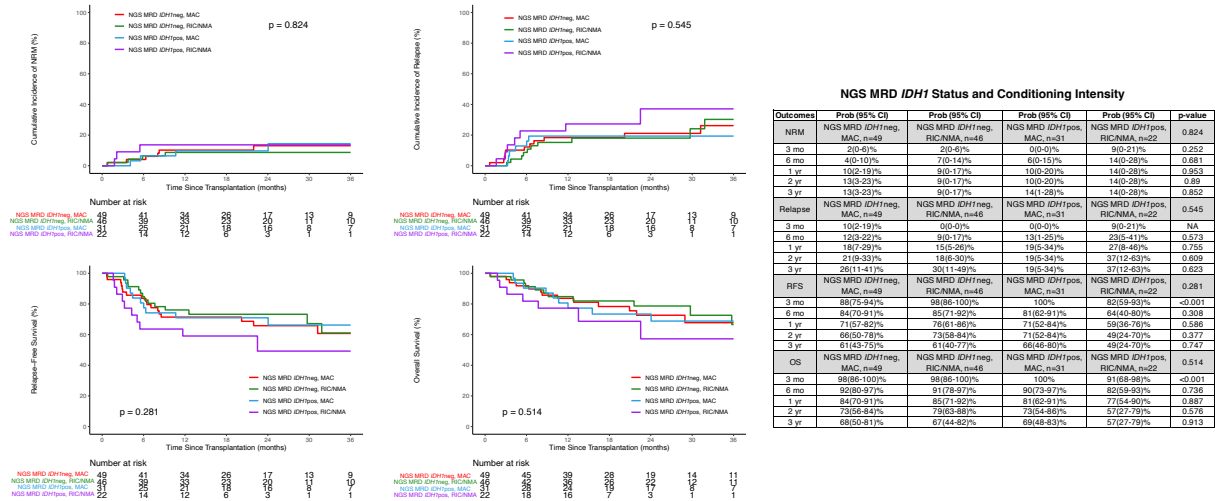
**B**



***IDH1* Only Baseline Patients (without *NPM1* or *FLT3*-ITD) NGS MRD Status**

Outcomes	Prob (95% CI)	Prob (95% CI)	p-value
<b>NRM</b>	<i>NGS MRD IDH1</i> neg=46	<i>NGS MRD IDH1</i> pos=33	0.505
3 mo	2(0-6)%	6(0-14)%	0.413
6 mo	4(0-10)%	12(1-23)%	0.234
1 yr	9(0-17)%	12(1-23)%	0.632
2 yr	9(0-17)%	12(1-23)%	0.632
3 yr	9(0-17)%	17(3-31)%	0.34
<b>Relapse</b>	<i>NGS MRD IDH1</i> neg=46	<i>NGS MRD IDH1</i> pos=33	0.253
3 mo	2(0-6)%	3(0-9)%	0.818
6 mo	9(0-17)%	21(7-35)%	0.135
1 yr	20(8-31)%	30(14-46)%	0.287
2 yr	20(8-31)%	34(17-52)%	0.159
3 yr	29(13-46)%	34(17-52)%	0.662
<b>RFS</b>	<i>NGS MRD IDH1</i> neg=46	<i>NGS MRD IDH1</i> pos=33	0.107
3 mo	86(84-99)%	81(74-87)%	0.417
6 mo	87(73-94)%	67(48-80)%	0.034
1 yr	72(56-82)%	58(39-72)%	0.192
2 yr	72(56-82)%	53(35-69)%	0.1
3 yr	62(43-73)%	49(30-63)%	0.295
<b>OS</b>	<i>NGS MRD IDH1</i> neg=46	<i>NGS MRD IDH1</i> pos=33	0.218
3 mo	98(86-100)%	94(78-98)%	0.406
6 mo	93(81-98)%	82(64-91)%	0.127
1 yr	85(71-93)%	76(57-87)%	0.324
2 yr	73(57-84)%	60(40-76)%	0.259
3 yr	68(50-81)%	56(35-72)%	0.307

**Supplemental Figure 6. NGS MRD status for *IDH1*-mutated AML patients and the association with clinical outcomes after allogeneic hematopoietic cell transplant stratified by conditioning intensity.** Cumulative incidence of non-relapse mortality (NRM, top left) and relapse (top right), relapse-free survival (RFS, bottom left) and overall survival (OS, bottom right) shown at 36 months based on NGS MRD *IDH1* status and conditioning intensity. Point estimates at different time points are shown in the table (far right). Overall P values: Gray's test for non-relapse mortality (NRM) and relapse; log-rank test for relapse-free survival (RFS) and overall survival (OS). P values for pointwise estimations at different time points: z-test. Confidence interval, CI; Probability, prob; Month, mo; Year, yr; pos, positive; neg, negative.



**Supplemental Table 1. *IDH1*-mutated AML patient baseline clinical characteristics.**

Variable	Number of Patients (%)	Variable	Number of Patients (%)
<b>Age</b>		<b>HCT-comorbidity index</b>	
<60	73 (49%)	0	35 (24%)
≥60	75 (51%)	1-2	46 (31%)
<b>Sex</b>		>2	67 (45%)
Female	79 (53%)	<b>Karnofsky Score</b>	
Male	69 (47%)	<90	68 (46%)
<b>Conditioning Intensity</b>		≥90	79 (53%)
MAC	80 (54%)	<b>ATG usage</b>	
RIC/NMA	68 (46%)	No	124 (84%)
<b>Site-reported Flow Cytometry</b>		Yes	24 (16%)
Negative	133 (90%)	<b>Race</b>	
Positive	11 (7%)	Caucasian	125 (84%)
<b>Graft Type</b>		Other	19 (13%)
Peripheral Blood	111 (75%)	<b>ELN Risk Group</b>	
Cord Blood	15 (10%)	Favorable	30 (20%)
Bone Marrow	22 (15%)	Intermediate	68 (46%)
<b>Donor Type</b>		Adverse	50 (34%)
HLA-identical Sibling	18 (12%)	<b>AML Group</b>	
Matched Unrelated	96 (65%)	<i>De novo</i>	122 (82%)
Haploidentical Related	10 (7%)	Therapy-related	9 (6%)
Cord Blood	12 (8%)	Transformed MDS/MPN	17 (11%)
Mismatched	9 (6%)	<b>Baseline Mutation</b>	
Multiple Donors	3 (2%)	<i>NPM1</i> and/or <i>FLT3</i> -ITD	69 (47%)

MAC, myeloablative; RIC, reduced intensity; NMA, nonmyeloablative; AML, acute myeloid leukemia



## References

1. Dillon LW, Gui G, Page KM, et al. DNA Sequencing to Detect Residual Disease in Adults With Acute Myeloid Leukemia Prior to Hematopoietic Cell Transplant. *JAMA*. 2023;329(9):745-755.