

Supplementary Figures

Figure S1. Breakdown of causative agents identified in the Definite Bacterial and Definite Viral groups.

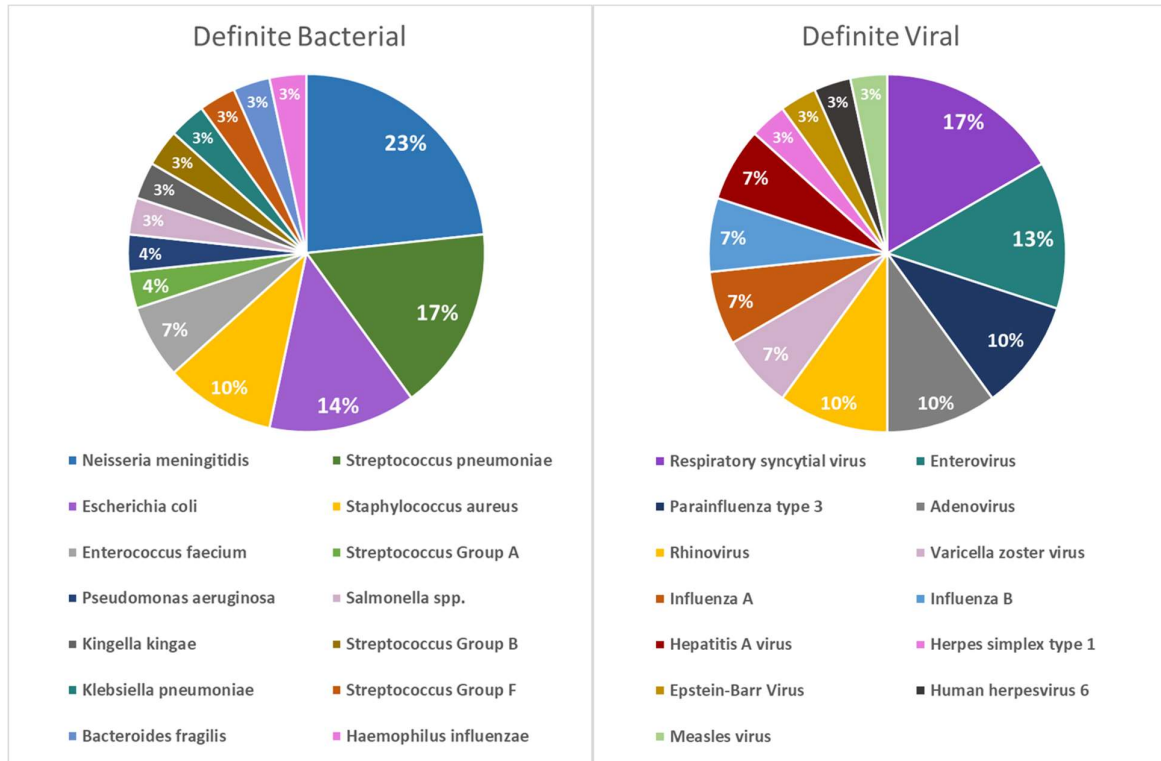
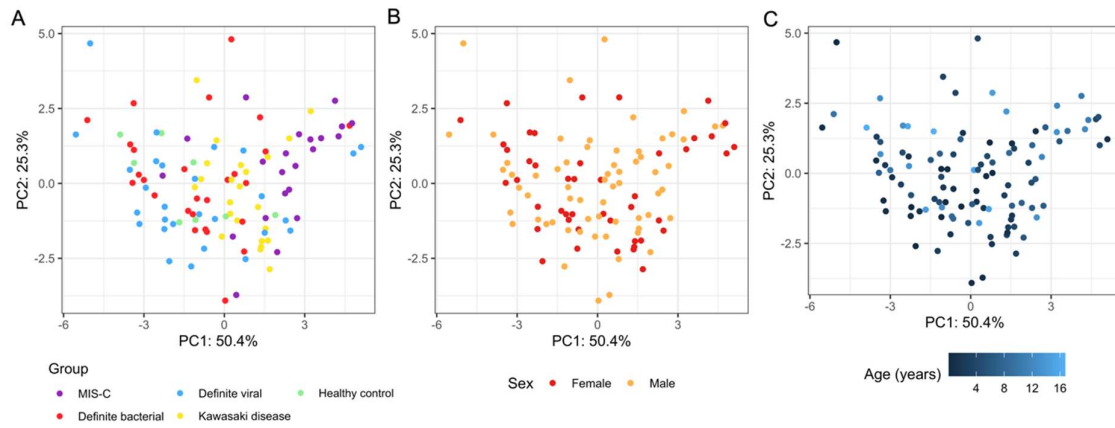


Figure S2. Principal component analysis (PCA) biplots generated from the protein abundance values of the 7 proteins measured in this study. Principal component (PC) 1 and 2 are shown. Points are coloured by disease group (A), sex (B), and age in years (C).



Supplementary Tables

Table S1. Proteins selected for analysis, their function and reason for inclusion. LFC= Log-fold change. P= adjusted p-value.

Protein	UniProt ID	Function	Justification for inclusion	Relevant publication(s)
ADAMTS2	O95450	Metalloprotease cleaving procollagens	RNA-Seq analysis: LFC 3.42, p= 3.03 E-09	
ARG1	O95450	Hydrolase in urea cycle	RNA-Seq analysis: LFC 2.31, p= 9.47 E-12	
CCL20	P78556	Inflammation and homing chemokine	Literature search	(6)
CD163	Q86VB7	Haemoglobin scavenger receptor	RNA-Seq analysis: LFC 2.66, p=4.34 E-18	
CORIN	Q9Y5Q5	Serine protease responsible atrial natriuretic peptide (ANP) production	RNA-Seq analysis: LFC 2.75, p= 3.79 E-20	
CXCL9	Q07325	Chemokine involved in inflammatory response	Literature search	(28, 17)
PCSK9	Q8NBP7	Low-density lipoprotein (LDL) receptor regulation	RNA-Seq analysis: LFC 4.94, p= 3.10 E-08	

Table S2. Significance levels of each of the proteins measured. P-values obtained from the Tukey test for the pairwise comparisons and ANOVA for MIS-C vs. all groups, with p-values corrected using the Bonferroni adjustment. P-values from the Tukey test are corrected as part of the Tukey test. MIS-C = multisystem inflammatory syndrome in children; KD = Kawasaki disease; DB = definite bacterial; DV = definite viral; HC = healthy control. Significant p-values are shown in underlined and bold font.

Protein	MIS-C vs. KD, DB, DV, HC	MIS-C vs. KD	MIS-C vs. DB	MIS-C vs. DV
PCSK9	<u>3.34x10⁻⁵</u>	<u>1.25x10⁻⁴</u>	<u>0.001</u>	<u>3.4x10⁻⁴</u>
CD163	<u>1.43x10⁻⁴</u>	<u>0.016</u>	<u>0.018</u>	<u>5.11x10⁻⁵</u>
CXCL9	<u>0.008</u>	<u>0.017</u>	<u>0.004</u>	0.050
ARG1	0.122	0.918	0.081	0.311
CORIN	0.105	0.531	0.999	0.097
CCL20	0.385	0.934	0.691	0.999
ADAMTS2	0.105	0.999	0.926	0.451

Table S3. The performance of all possible combinations of PCSK9, CD163 and CXCL9 in distinguishing MIS-C from DB, DV and KD. *: "All" includes DB, DV and KD. AUCs and 95% confidence intervals are shown in the table. **: for this comparison, MIS-C vs. all represents MIS-C vs. DB and KD as CRP was used in the classification of DV patients. ***: perfect classification is expected as CRP was used in the classification of DV samples.

Combination	MIS-C vs. all*	MIS-C vs. DB	MIS-C vs. DV	MIS-C vs. KD
PCSK9+CD163+ CXCL9	86.9% (76.8%- 95.1%)	87.5% (77.2%- 97.9%)	86.7% (76.3%- 97.1%)	83.2% (69.9%- 96.5%)
CD163+PCSK9	85.0% (75.7%- 94.3%)	81.8% (69.1%- 94.5%)	88.8% (79.7%- 97.9%)	84.0% (72.1%- 95.9%)
CD163+CXCL9	84.3% (75.0%- 93.7%)	86.5% (75.9%- 97.2%)	86.4% (75.9%- 96.9%)	79.3% (64.2%- 94.3%)
PCSK9+CXCL9	82.6% (72.0%- 93.2%)	86.5% (76.2%- 96.9%)	82.5% (70.4%- 94.5%)	78.1% (62.9%- 93.2%)
PCSK9	74.2% (61.3%- 87.2%)	69.7% (54.4%- 85.0%)	75.3% (61.1%- 89.5%)	78.3% (64.4%- 92.1%)
CD163	82.8% (74.0%- 91.5%)	81.1% (68.5%- 93.8%)	88.8% (79.8%- 97.8%)	77.3% (63.5%- 91.0%)
CXCL9	81.4% (71.0%- 91.9%)	85.0% (74.1%- 96.0%)	82.8% (71.0%- 94.6%)	75.5% (59.5%- 91.5%)
3-proteins + CRP**	81.1% (71.3%- 90.9%)	71.5% (56.9%- 86.2%)	100% ***	92.3% (84.8%- 99.8%)

Supplementary Text File 1

DIAMONDS, PERFORM and UK Kawasaki Disease Genetic Consortia

1.1. DIAMONDS Consortium

<https://www.diamonds2020.eu/>

PARTNER: Imperial College (Coordinating Centre) (UK)

Chief investigator/DIAMONDS coordinator:

Michael Levin¹

Principal and co-investigators (alphabetical order)¹

Aubrey Cunnington; Jethro Herberg; Myrsini Kaforou; Victoria Wright

Section of Paediatric Infectious Diseases Research Group (alphabetical order)¹

Evangelos Bellos; Claire Broderick; Samuel Channon-Wells; Samantha Cooray; Tisham De (database work package lead); Giselle D'Souza; Leire Estramiana Elorrieta; Diego Estrada-Rivadeneira; Rachel Galassini (Clinical Trial Manager); Dominic Habgood-Coote; Shea Hamilton (Proteomics); Heather Jackson; James Kavanagh; Mahdi Moradi Marjaneh; Stephanie Menikou; Samuel Nichols; Ruud Nijman; Harsita Patel; Ivana Pennisi; Oliver Powell; Ruth Reid; Priyen Shah; Ortensia Vito; Elizabeth Whittaker; Clare Wilson; Rebecca Womersley

Recruitment team at Imperial College Healthcare NHS Trust, London (alphabetical order)²

Amina Abdulla; Sarah Darnell; Sobia Mustafa

Engineering Team

Pantelis Georgiou³ (engineering lead); Jesus-Rodriguez Manzano⁴; Nicolas Moser³; Ivana Pennisi¹

¹Section of Paediatric Infectious Disease, Imperial College London, Norfolk Place, London W2 1PG, UK

²Children's Clinical Research Unit, St Mary's Hospital, Praed Street, London W2 1NY, UK

³ Imperial College London, Department of Electrical and Electronic Engineering, South Kensington Campus, London, SW7 2AZ, UK

⁴ Imperial College London, Department of Infectious Disease, Section of Adult Infectious Disease, Hammersmith Campus, London, W12 0NN, UK

UK Non-Consortium Clinical Recruiting Sites

Evelina London Children's Hospital, Guy's and St Thomas' NHS Foundation Trust; King's College London [combined]

Michael Carter^{1,2} (principal investigator); Shane Tibby^{1,2} (co-investigator)

Recruitment team (alphabetical order): Jonathan Cohen¹; Francesca Davis¹; Julia Kenny¹; Paul Wellman¹; Marie White¹

Laboratory team (alphabetical order): Matthew Fish³; Aislinn Jennings⁴; Manu Shankar-Hari^{3,4}

¹ Evelina London Children's Hospital, Guy's and St Thomas' NHS Foundation Trust, London, UK

² Department of Women and Children's Health, School of Life Course Sciences, King's College London, UK

³ Department of Infectious Diseases, School of Immunology and Microbial Sciences, King's College London, London, UK

⁴ Department of Intensive Care Medicine, Guy's and St Thomas' NHS Foundation Trust, London, UK

University Hospitals Sussex

Katy Fidler¹ (principal investigator); Dan Agranoff² (co-investigator)

Recruitment team; Vivien Richmond^{1,3}, Mathhew Seal²

¹ Royal Alexandra Children's Hospital, University Hospitals Sussex, Brighton, UK

² Dept of Infectious Diseases, University Hospitals Sussex, Brighton, UK

³ Research Nurse team, University Hospitals Sussex, Brighton, UK

University Hospital Southampton NHS Foundation Trust

Saul Faust¹ (principal investigator); Dan Owen¹ (co-investigator);

Recruitment team; Ruth Ensom²; Sarah McKay²; Diana Mondo³, Mariya Shaji³; Rachel

Schranz³ (*alphabetical order*)

¹ NIHR Southampton Clinical Research Facility, University Hospital Southampton NHS Foundation Trust and University of Southampton, UK

² NIHR Southampton Clinical Research Facility, University Hospital Southampton NHS Foundation Trust, UK

³ Department of R&D, University Hospital Southampton NHS Foundation Trust, UK

Barts Health NHS Trust

Prita Rughnani^{1,2,3} (principal investigator 2020-2021); Amutha Anpananthar^{1,2,3} (principal investigator 2021-to date); Susan Liebeschuetz² (co-investigator), Anna Riddell¹ (co-investigator)

Recruitment team; Nosheen Khalid^{1,3}; Ivone Lancoma Malcolm, Teresa Simagan³ (*alphabetical order*)

¹ Royal London Hospital, Whitechapel Rd, London E1 1FR, UK

² Newham University Hospital, Glen Rd, London E13 8SL, UK

³ Whipps Cross University Hospital, Whipps Cross Road, London, E11 1NR, UK

Great Ormond Street Hospital for Children NHS Foundation Trust

Mark Peters^{1,2} (principal investigator); Alasdair Bamford^{1,2} (co-investigator)

Recruitment team; Lauran O'Neill¹

¹ Great Ormond Street Hospital, London, WC1N 3JH, UK

² UCL Great Ormond St Institute of Child Health, WC1N 1EH, UK

Cambridge University Hospitals NHS Foundation Trust

Nazima Pathan^{1,2} (principal investigator)

Recruitment team; Esther Daubney¹, Deborah White¹ (alphabetical order)

¹Addenbrooke's Hospital, Hills Road, Cambridge CB2 0QQ, UK

²Department of Paediatrics, University of Cambridge, Cambridge CB2 0QQ, UK

University College London Hospitals NHS Foundation Trust

Melissa Heightman¹ (principal investigator); Sarah Eisen¹ (co-investigator)

Recruitment team; Terry Segal¹, Lucy Wellings¹ (alphabetical order)

¹ University College London Hospital, Euston Road, London NW1 2BU, UK

St George's University Hospitals NHS Foundation Trust

Simon B Drysdale¹ (principal investigator)

Recruitment team; Nicole Branch¹, Lisa Hamzah¹, Heather Jarman¹ (alphabetical order)

¹ St George's Hospital, Blackshaw Road, London SW17 0QT, UK

Lewisham and Greenwich NHS Trust

Maggie Nyirenda^{1,2} (principal investigator)

Recruitment team Lisa Capozzi¹, Emma Gardiner¹ (alphabetical order)

¹University Hospital Lewisham, London SE13 6LH, UK

²Queen Elizabeth Hospital Greenwich, London SE18 4QH, UK

Liverpool University Hospitals NHS Foundation Trust

Robert Moots¹ (principal investigator); Magda Nasher² (principal investigator)

Recruitment team; Anita Hanson²; Michelle Linforth¹

¹ Aintree University Hospital, Lower Lane, Liverpool L9 7AL, UK

² Royal Liverpool Hospital, Prescot St, Liverpool L7 8XP, UK

Leeds Teaching Hospitals NHS Trust

Sean O’Riordan¹ (principal investigator)

Recruitment team; Donna Ellis¹

¹Leeds Children’s Hospital, Leeds LS1 3EX, UK

King’s College Hospital NHS Foundation Trust

Akash Deep¹ (principal investigator)

Recruitment team; Ivan Caro¹

¹ Kings College Hospital, Denmark Hill, London SE5 9RS, UK

Sheffield Children’s NHS Foundation Trust

Fiona Shackley ¹ (principal investigator);

Recruitment team; Arianna Bellini,¹ Stuart Gormley¹ (*alphabetical order*)

¹Sheffield Children’s Hospital, Broomhall, Sheffield S10 2TH, UK

University Hospitals of Leicester NHS Foundation Trust

Samira Neshat¹ (principal investigator)

¹Leicester General Hospital, Leicester LE1 5WW, UK

Birmingham Women’s and Children’s Hospital NHS Foundation Trust

Barnaby J Scholefield¹ (principal investigator)

Recruitment team; Ceri Robbins¹, Helen Winmill¹ (*alphabetical order*)

¹ Birmingham Children's Hospital, Steelhouse Lane, Birmingham B4 6NH, UK

PARTNER: University of Oxford (UK)

Children's Hospital, John Radcliffe Hospital, Oxford

Principal Investigator

Stéphane C. Paulus^{1,2,3}

Co-Principal Investigator

Andrew J. Pollard^{1,2,3,4}

Co-investigators

Mark Anthony¹ (neonates)

Recruitment team

Sarah Hopton¹, Danielle Miller¹, Zoe Oliver¹, Sally Beer¹, Bryony Ward¹

¹John Radcliffe Hospital, Oxford University Hospitals NHS Foundation Trust, Oxford, UK

²Department of Paediatrics, University of Oxford, UK

³Oxford Vaccine Group, University of Oxford, UK

⁴NIHR Oxford Biomedical Research Centre, Oxford, UK

University of Oxford, Nepal Site

Principal Investigator

Shrijana Shrestha¹

Co-Principal Investigator

Andrew J Pollard^{2,3}

Nepal Research Team

Meeru Gurung¹

Puja Amatya¹

Bhishma Pokhrel¹

Sanjeev Man Bijukchhe¹

Oxford Research Team

Tim Lubinda²

Sarah Kelly²

Peter O'Reilly²

¹Paediatric Research Unit, Patan Academy of Health Sciences, Kathmandu, Nepal.

²Oxford Vaccine Group, Department of Paediatrics, University of Oxford, Oxford, United Kingdom.

³NIHR Oxford Biomedical Research Centre, Oxford, United Kingdom.

PARTNER: SERGAS (Spain)

Principal Investigators

Federico Martinón-Torres¹

Antonio Salas^{1,2}

GENVIP RESEARCH GROUP (in alphabetical order):

Fernando Álvarez González¹, Xabier Bello^{1,2}, Mirian Ben García¹, Sandra Carnota¹, Miriam Cebey-López¹, María José Curras-Tuala^{1,2}, Carlos Durán Suárez¹, Luisa García Vicente¹, Alberto Gómez-Carballa^{1,2}, Jose Gómez Rial¹, Pilar Leboráns Iglesias¹, Federico Martinón-Torres¹, Nazareth Martinón-Torres¹, José María Martinón Sánchez¹, Belén Mosquera Pérez¹, Jacobo Pardo-Seco^{1,2}, Lidia Piñeiro Rodríguez¹, Sara Pischedda^{1,2}, Sara Rey Vázquez¹, Irene Rivero Calle¹, Carmen Rodríguez-Tenreiro¹, Lorenzo Redondo-Collazo¹, Miguel Sadiki Ora¹, Antonio Salas^{1,2}, Sonia Serén Fernández¹, Cristina Serén Trasorras¹, Marisol Vilas Iglesias¹.

¹ Translational Pediatrics and Infectious Diseases, Pediatrics Department, Hospital Clínico Universitario de Santiago, Santiago de Compostela, Spain, and GENVIP Research Group

(www.genvip.org), Instituto de Investigación Sanitaria de Santiago, Universidad de Santiago de Compostela, Galicia, Spain.

² Unidade de Xenética, Departamento de Anatomía Patolóxica e Ciencias Forenses, Instituto de Ciencias Forenses, Facultade de Medicina, Universidade de Santiago de Compostela, and GenPop Research Group, Instituto de Investigaciones Sanitarias (IDIS), Hospital Clínico Universitario de Santiago, Galicia, Spain

³ Fundación Pública Galega de Medicina Xenómica, Servizo Galego de Saúde (SERGAS), Instituto de Investigaciones Sanitarias (IDIS), and Grupo de Medicina Xenómica, Centro de Investigación Biomédica en Red de Enfermedades Raras (CIBERER), Universidade de Santiago de Compostela (USC), Santiago de Compostela, Spain

PARTNER: Liverpool (UK)

Principal Investigators

Enitan D Carrol^{1,2}.

Research Group (in alphabetical order):

Elizabeth Cocklin¹, Aakash Khanijau¹, Rebecca Lenihan¹, Nadia Lewis-Burke¹

Karen Newall⁴, Sam Romaine¹, ¹ Department of Clinical Infection, Microbiology and Immunology, University of Liverpool Institute of Infection, Veterinary and Ecological Sciences , Liverpool, England

² Alder Hey Children's Hospital, Department of Infectious Diseases, Eaton Road, Liverpool, L12 2AP

³ ⁴ Alder Hey Children's Hospital, Clinical Research Business Unit, Eaton Road, Liverpool, L12 2AP

PARTNER: NATIONAL AND KAPODISTRIAN UNIVERSITY OF ATHENS (Greece)

Principal Investigator: Maria Tsolia¹

Co-Investigator: Irini Eleftheriou¹

PID Unit: Nikos Spyridis¹, Maria Tambouratzi¹

Pediatric Rheumatology Unit: Despoina Maritsi¹

Lab: Antonios Marmarinos¹, Marietta Xagorari¹

Recruitment teams:

Adult COVID19- Infectious Diseases: Lourida Panagiota, Pefanis Aggelos²

Adult COVID19: Akinosoglou Karolina, Gogos Charalambos, Maragos Markos³

Adult Inflammatory Diseases-Oncology: Voulgarelis Michalis , Stergiou Ioanna⁴

¹2nd Department of Pediatrics, National and Kapodistrian University of Athens (NKUA),
Children's Hospital "P, and A. Kyriakou", Athens, Greece

²1st Department of Infectious Diseases, General Hospital "Sotiria"

³Pathology Department, University of Patras, General Hospital "Panagia i Voithia"

⁴Pathophysiology Department, Medical Faculty, National and Kapodistrian University of
Athens (NKUA), General Hospital "Laiko"

**Newcastle upon Tyne Hospitals NHS Foundation Trust and Newcastle University (UK)
combined**

Principal Investigator:

Marieke Emonts ^{1,2,3} (all activities)

Co-investigators

Emma Lim^{2,3,6} (all activities)

John Isaacs¹ (adult inflammatory)

Recruitment team (alphabetical), datamanagers, and GNCH Research unit:

Kathryn Bell⁴, Stephen Crulley⁴, Daniel Fabian⁴, Evelyn Thomson⁴, Diane Wallia⁴, Caroline
Miller⁴ , Ashley Bell⁴

PhD Students/medical staff DIAMONDS

Fabian J.S. van der Velden^{1,2} (all activities), Geoff Shenton⁷ (oncology), Ashley Price^{8,9} (Adult COVID)

Students

Owen Treloar^{1,2} (quality control, data management and analysis)

Daisy Thomas^{1,2} (recruitment)

Author Affiliations:

¹ Translational and Clinical Research Institute, Newcastle University, Newcastle upon Tyne UK

²Great North Children's Hospital, Paediatric Immunology, Infectious Diseases & Allergy, Newcastle upon Tyne Hospitals NHS Foundation Trust, Newcastle upon Tyne, United Kingdom.

³NIHR Newcastle Biomedical Research Centre based at Newcastle upon Tyne Hospitals NHS Trust and Newcastle University, Westgate Rd, Newcastle upon Tyne NE4 5PL, United Kingdom

⁴Great North Children's Hospital, Research Unit, Newcastle upon Tyne Hospitals NHS Foundation Trust, Newcastle upon Tyne, United Kingdom.

⁶Population Health Sciences Institute, Newcastle University, Newcastle upon Tyne, UK

⁷Great North Children's Hospital, Paediatric Oncology, Newcastle upon Tyne Hospitals NHS Foundation Trust, Newcastle upon Tyne, United Kingdom.

⁸Department of Infection & Tropical Medicine, Newcastle upon Tyne Hospitals NHS Foundation Trust, Newcastle upon Tyne, United Kingdom

⁹NIHR Newcastle In Vitro Diagnostics Co-operative (Newcastle MIC), Newcastle upon Tyne, United Kingdom.

Servicio Madrileño de Salud (SERMAS) - Fundación Biomédica del Hospital Universitario 12 de Octubre (FIB-H12O) (Spain)

Principal Investigators

Pablo Rojo^{1 3}

Cristina Epalza^{1,2}

SERMAS/FIB-H120 team:

Serena Villaverde¹, Sonia Márquez², Manuel Gijón², Fátima Machín², Laura Cabello², Irene Hernández², Lourdes Gutiérrez², Ángela Manzanares¹

Author Affiliations:

¹ Servicio Madrileño de Salud (SERMAS), Pediatric Infectious Diseases Unit, Department of Pediatrics, Hospital Universitario 12 de Octubre, Madrid, Spain

² Fundación Biomédica del Hospital Universitario 12 de Octubre (FIB-H120), Unidad Pediátrica de Investigación y Ensayos Clínicos (UPIEC), Hospital Universitario 12 de Octubre, Instituto de Investigación Sanitaria Hospital 12 de Octubre (i+12), Madrid, Spain.

³ Universidad Complutense de Madrid, Faculty of Medicine, Department of Pediatrics, Madrid, Spain.

Amsterdam University Medical Center (Amsterdam UMC), University of Amsterdam

Principal Investigator:

T.W. (Taco) Kuijpers MD PhD^{1,2} (all activities)

Co-investigators

M. (Martijn) van de Kuip MD PhD¹ (infectious disease)

A.M. (Marceline) van Furth MD PhD¹ (infectious disease)

J.M. (Merlijn) van den Berg MD PhD¹ (inflammatory disease)

Hospital Team (all activities):

Giske Biesbroek MD PhD¹, Floris Verkuil MD (PhD student)¹, Carlijn (C.W.) van der Zee MD (start 1/8/2022, PhD student)¹

Recruitment:

Dasja Pajkrt MD PhD¹, Michael Boele van Hensbroek MD PhD¹, Dieneke Schonenberg MD¹, Mariken Gruppen MD¹, Sietse Nagelkerke MD PhD^{1,2}, medical students

Laboratory Team:

Machiel H Jansen ¹, Ines Goetschalckx (PhD student) ²

Author Affiliations:

¹ Amsterdam UMC, Emma Children's Hospital, Dept of Pediatric Immunology, Rheumatology and Infectious Disease, University of Amsterdam, The Netherlands

² Sanquin, Dept of Molecular Hematology, University Medical Center, Amsterdam, The Netherlands

Bambino Gesù Children's Hospital (Rome-Italy)

Principal Investigator

Lorenza Romani 1

Maia De Luca 1

Recruitment Team

Sara Chiurchiù 1

Martina Di Giuseppe 1

Affiliation

1 Infectious Disease Unit, Academic Department of Pediatrics, Bambino Gesù Children's Hospital, IRCCS, Rome 00165, Italy

ERASMUS MC-Sophia Children's Hospital

Principal Investigator

Clementien L. Vermont²

Research group

Henriëtte A. Moll¹, Dorine M. Borensztajn¹, Nienke N. Hagedoorn, Chantal Tan ¹, Joany Zachariasse ¹, Medical students ¹

Additional investigator

W Dik ³

¹ Erasmus MC-Sophia Children's Hospital, Department of General Paediatrics, Rotterdam, the Netherlands

² Erasmus MC-Sophia Children's Hospital, Department of Paediatric Infectious Diseases & Immunology, Rotterdam, the Netherlands

³ Erasmus MC, Department of immunology, Rotterdam, the Netherlands

TAIWAN

Ching-Fen (Kitty), Shen

Division of Infectious Disease, Department of Pediatrics, National Cheng Kung University

Tainan, Taiwan

Riga Stradins University (Riga, Latvia)

Principal Investigator:

Dace Zavadska ^{1,2} (all activities)

Co-investigators

Sniedze Laivacuma ^{1,3} (adult cohorts)

Recruitment team:

Aleksandra Rudzate ^{1,2}, Diana Stoldere ^{1,2}, Arta Barzdina ^{1,2}, Elza Barzdina ^{1,2}, Sniedze

Laivacuma^{1,3}, Monta Madelane ^{1,3}

Laboratory

Dagne Gravele ², Dace Svile²

Author Affiliations:

¹ Riga Stradins University, Riga, Latvia

² Children clinical university hospital, Riga, Latvia

³ Riga East clinical university hospital, Riga, Latvia

Assistance Publique - Hôpitaux de Paris

Principal Investigator:

Romain Basmaci ^{1,2}

Co-investigator:

Noémie Lachaume ¹

Recruitment team:

Pauline Bories ¹, Raja Ben Tkhatat ¹, Laura Chériaux ¹, Juraté Davoust ¹, Kim-Thanh Ong ¹,

Marie Cotillon ¹, Thibault de Groc ¹, Sébastien Le ¹, Nathalie Vergnault ¹, Hélène Sée ¹, Laure

Cohen ¹, Alice de Tugny ¹, Nevena Danekova ¹

Author Affiliations:

¹ Service de Pédiatrie-Urgences, AP-HP, Hôpital Louis-Mourier, F-92700 Colombes, France

² Université Paris Cité, Inserm, IAME, F-75018 Paris, France

BioMérieux

Principal Investigator:

Marine Mommert-Tripon

Co-investigator:

Karen Brengel-Pesce

Author Affiliations:

bioMérieux - Open Innovation & Partnerships Department, Lyon, France

University Medical Centre Ljubljana, Slovenia

Principal Investigator: Marko Pokorn^{1,2,3}

Co-Investigator: Mojca Kolnik²

Research Group (in alphabetical order):

Tadej Avčin^{2,3}, Tanja Avramoska², Natalija Bahovec¹, Petra Bogovič¹, Lidija Kitanovski^{2,3},

Mirijam Nahtigal¹, Lea Papst¹, Tina Plankar Srovin¹, Franc Strle^{1,2}, Anja Srpčič², Katarina

Vincek¹.

Affiliations:

1. Department of Infectious diseases, University Medical Centre Ljubljana, Slovenia
2. University Children's Hospital, University Medical Centre Ljubljana, Slovenia
3. Faculty of Medicine, University of Ljubljana, Slovenia
4. Centre for Clinical research, University Medical Centre Ljubljana

University Medical Center Utrecht, Utrecht, The Netherlands

Principal Investigator

Michiel van der Flier^{1,5} (Pediatric Infectious Diseases and Immunology)

Co-investigators

Wim J.E. Tissing⁵ (Pediatric Oncology)

Roelie M. Wösten-van Asperen² (Pediatric Intensive Care Unit)

Sebastiaan J Vastert³ (Pediatric Rheumatology)

Daniel C Vijlbrief⁴ (Pediatric Neonatal Intensive Care)

Louis J. Bont^{1,5}(Pediatric Infectious Diseases and Immunology)

Tom F.W. Wolfs^{1,5}(Pediatric Infectious Diseases and Immunology)

PhD student

Coco R. Beudeker^{1,5}(Pediatric Infectious Diseases and Immunology)

Affiliations:

1. Pediatric Infectious Diseases and Immunology, 2. Pediatric Intensive Care Unit 3. Pediatric Rheumatology 4. Pediatric Neonatal Intensive Care, Wilhelmina Children's Hospital, University Medical Center Utrecht, Utrecht, The Netherlands

5. Princess Maxima Center for Pediatric Oncology, Utrecht, The Netherlands

PARTNER: University of Bern, Inselspital, Bern University Hospital, University of Bern (Switzerland)

Principal Investigators (alphabetical)

Philipp Agyeman¹

Luregn Schlapbach^{2,3}

Co-Investigator

Christoph Aebi¹

Recruitment team

Mariama Usman¹, Stefanie Schlüchter¹, Verena Wyss¹, Nina Schöbi¹, Elisa Zimmermann²

PhD, Marion Meier², Kathrin Weber²

¹ Department of Pediatrics, Inselspital, Bern University Hospital, University of Bern, Switzerland

² Department of Intensive Care and Neonatology, and Children's Research Center, University Children's Hospital Zurich, Zurich, Switzerland

³ Child Health Research Centre, The University of Queensland, Brisbane, Australia

Swiss Pediatric Sepsis Study group

Philipp Agyeman, MD ¹, Luregn J Schlapbach, MD, FCICM ^{2,3}, Eric Giannoni, MD ^{4,5}, Martin Stocker, MD ⁶, Klara M Posfay-Barbe, MD ⁷, Ulrich Heininger, MD ⁸, Sara Bernhard-Stirnemann, MD ⁹, Anita Niederer-Loher, MD ¹⁰, Christian Kahlert, MD ¹⁰, Giancarlo Natalucci, MD ¹¹, Christa Relly, MD ¹², Thomas Riedel, MD ¹³, Christoph Aebi, MD ¹, Christoph Berger, MD ¹²

Affiliations:

¹ Department of Pediatrics, Inselspital, Bern University Hospital, University of Bern, Switzerland

² Department of Intensive Care and Neonatology, and Children`s Research Center, University Children`s Hospital Zurich, Zurich, Switzerland

³ Child Health Research Centre, The University of Queensland, Brisbane, Australia

⁴ Clinic of Neonatology, Department Mother-Woman-Child, Lausanne University Hospital and University of Lausanne, Switzerland

⁵ Infectious Diseases Service, Department of Medicine, Lausanne University Hospital and University of Lausanne, Switzerland

⁶ Department of Pediatrics, Children's Hospital Lucerne, Lucerne, Switzerland

⁷ Pediatric Infectious Diseases Unit, Children's Hospital of Geneva, University Hospitals of Geneva, Geneva, Switzerland

⁸ Infectious Diseases and Vaccinology, University of Basel Children's Hospital, Basel, Switzerland

⁹ Children's Hospital Aarau, Aarau, Switzerland

¹⁰ Division of Infectious Diseases and Hospital Epidemiology, Children's Hospital of Eastern Switzerland St. Gallen, St. Gallen, Switzerland

¹¹ Department of Neonatology, University Hospital Zurich, Zurich, Switzerland

¹² Division of Infectious Diseases and Hospital Epidemiology, and Children's Research Center,
University Children's Hospital Zurich, Switzerland

¹³ Children's Hospital Chur, Chur, Switzerland

Micropathology Ltd (UK)

Micropathology Ltd, The Venture Center, University of Warwick Science Park, Sir William
Lyons Road, Coventry, CV4 7EZ

Principle Investigator; Prof Colin Fink

Co Investigators: Marie Voice, Leo Calvo-Bado, Michael Steele, Jennifer Holden

Research group: Benjamin Evans, Jake Stevens, Peter Matthews, Kyle Billing

Medical University of Graz, Austria (MUG)

Principal Investigator:

Werner Zenz¹ (all activities)

Co-investigators (in alphabetical order):

Alexander Binder¹ (grant application)

Benno Kohlmaier¹ (study design, recruitment)

Daniela S. Kohlfürst¹ (study design)

Nina A. Schweintzger¹ (all activities)

Christoph Zurl¹ (study design, recruitment)

Recruitment team, data managers, laboratory work (in alphabetical order):

Susanne Hösele¹, Manuel Leitner¹, Lena Pölz¹, Alexandra Rusu¹, Glorija Rajic¹, Bianca
Stoiser¹, Martina Strempl¹, Manfred G. Sagmeister¹

Clinical recruitment partners (in alphabetical order):

Sebastian Bauchinger¹, Martin Benesch³, Astrid Ceolotto¹, Ernst Eber², Siegfried Gallistl¹,
Harald Haidl¹, Almuthe Hauer¹, Christa Hude¹, Andreas Kapper⁷, Markus Keldorfer⁵, Sabine

Löffler⁵, Tobias Niedrist⁶, Heidemarie Pilch⁵, Andreas Pflieger², Klaus Pfurtscheller⁴, Siegfried Rödl⁴, Andrea Skrabl-Baumgartner¹, Volker Strenger³, Elmar Wallner⁷

Author Affiliations:

¹ Department of Pediatrics and Adolescent Medicine, Division of General Pediatrics, Medical University of Graz, Graz, Austria

²Department of Pediatric Pulmonology, Medical University of Graz, Graz, Austria

³Department of Pediatric Hematooncology, Medical University of Graz, Graz, Austria

⁴Paediatric Intensive Care Unit, Medical University of Graz, Graz, Austria

⁵University Clinic of Pediatrics and Adolescent Medicine Graz, Medical University Graz, Graz, Austria

⁶Clinical Institute of Medical and Chemical Laboratory Diagnostics, Medical University Graz, Graz, Austria

⁷Department of Internal Medicine, State Hospital Graz II, Location West, Graz, Austria

SkylineDX

Principle investigator: Dennie Tempel ¹

Co-investigators: Danielle van Keulen¹, Annelieke M Strijbosch ¹,

Author affiliations:

¹ SkylineDx, Rotterdam, The Netherlands

Project partner BBMRI-ERIC

Maike K. Tauchert

Author affiliation:

Biobanking and BioMolecular Resources Research Infrastructure - European Research Infrastructure Consortium (BBMRI-ERIC), Neue Stiftingtalstrasse 2/B/6, 8010, Graz, Austria

LMU Munich Partner (Germany)

Principal Investigator:

Ulrich von Both^{1,2} MD, FRCPCH (all activities)

Research group:

Laura Kolberg¹ MSc (all activities)

Patricia Schmied¹ (Study physician), Irene Alba-Alejandre³ MD (Study physician)

Clinical recruitment partners (in alphabetical order):

Katharina Danhauser, MD⁶, Nikolaus Haas, MD¹¹, Florian Hoffmann, MD¹⁰, Matthias Griese, MD⁷, Tobias Feuchtinger, MD⁵, Sabrina Juranek, MD⁴, Matthias Kappler, MD⁷, Eberhard Lurz, MD⁸, Esther Maier, MD⁴, Karl Reiter, MD¹⁰, Carola Schoen, MD¹⁰, Sebastian Schroepf, MD⁹

Author Affiliations:

¹ Division of Pediatric Infectious Diseases, Department of Pediatrics, Dr. von Hauner Children's Hospital, University Hospital, LMU Munich, Munich, Germany

² German Center for Infection Research (DZIF), Partner Site Munich, Munich, Germany

³ Department of Gynecology and Obstetrics, University Hospital, LMU Munich, Munich, Germany

⁴ Division of General Pediatrics, Department of Pediatrics, Dr. von Hauner Children's Hospital, University Hospital, LMU Munich, Munich, Germany

⁵ Division of Pediatric Haematology & Oncology, Department of Pediatrics, Dr. von Hauner Children's Hospital, University Hospital, LMU Munich, Munich, Germany

⁶ Division of Pediatric Rheumatology, Department of Pediatrics, Dr. von Hauner Children's Hospital, University Hospital, LMU Munich, Munich, Germany

⁷ Division of Pediatric Pulmonology, Department of Pediatrics, Dr. von Hauner Children's Hospital, University Hospital, LMU Munich, Munich, Germany

⁸ Division of Pediatric Gastroenterology, Department of Pediatrics, Dr. von Hauner Children's Hospital, University Hospital, LMU Munich, Munich, Germany

⁹ Neonatal Intensive Care Unit, Department of Pediatrics, Dr. von Hauner Children's Hospital, University Hospital, LMU Munich, Munich, Germany

¹⁰ Paediatric Intensive Care Unit, Department of Pediatrics, Dr. von Hauner Children's Hospital, University Hospital, LMU Munich, Munich, Germany

¹¹ Department of Pediatric Cardiology and Pediatric Intensive Care, University Hospital, LMU Munich, Germany

London School of Hygiene and Tropical Medicine (LSHTM)

Principal Investigator: Shunmay Yeung ^{1,2,3}

Research group:

Manuel Dewez¹ David Bath³, Elizabeth Fitchett¹, Fiona Cresswell¹

1. Clinical Research Department, Faculty of Infectious and Tropical Disease, London School of Hygiene and Tropical Medicine, London
2. Department of Paediatrics, St. Mary's Imperial College Hospital, London
3. Department of Global Health and Development, Faculty of Public Health and Policy, London School of Hygiene and Tropical Medicine, London

The UK DIAMONDS Clinical Network Collaborators are as follows: Michael Carter, Paul Wellman, Shane Tibby, Jonathan Cohen, Francesca Davis, Julia Kenny, Marie White, Matthew Fish, Aislinn Jennings, Manu Shankar-Hari, Katy Fidler, Dan Agranoff, Vivien Richmond, Mathhew Seal, Saul Faust, Dan Owen, Ruth Ensom, Sarah McKay, Diana Mondo Mariya Shaji, Rachel Schranz, Prita Rughani, Amutha Anpananthar, Susan Liebeschuetz, Anna Riddell, Divya Divakaran, Louise Han, Nosheen Khalid, Ivone Lancoma-Malcolm, Jessica Schofield, Teresa Simagan, Mark Peters, Alasdair Bamford, Lauran O'Neill, Nazima Pathan, Esther Daubney, Deborah White, Melissa Heightman, Sarah Eisen, Terry Segal, Lucy

Wellings, Simon B Drysdale, Nicole Branch, Lisa Hamzah, Heather Jarman, Maggie Nyirenda, Lisa Capozzi, Emma Gardiner, Robert Moots, Magda Nasher, Anita Hanson, Michelle Linforth, Sean O’Riordan, Donna Ellis, Akash Deep, Ivan Caro, Fiona Shackley,, Arianna Bellini, Stuart Gormley, Samira Neshat, Barnaby J Scholefield, Ceri Robbins, Helen Winmill

1.2. PERFORM Consortium

<https://www.perform2020.org/>

PARTNER: IMPERIAL COLLEGE (UK)

Chief investigator/PERFORM coordinator:

Michael Levin

Principal and co-investigators; work package leads (alphabetical order)

Aubrey Cunnington (grant application)

Tisham De (work package lead)

Jethro Herberg (Principle Investigator, Deputy Coordinator, grant application)

Myrsini Kaforou (grant application, work package lead)

Victoria Wright (grant application, Scientific Coordinator)

Research Group (alphabetical order)

Lucas Baumard; Evangelos Bellos; Giselle D’Souza; Rachel Galassini; Dominic Habgood-Coote; Shea Hamilton; Clive Hoggart; Sara Hourmat; Heather Jackson; Ian Maconochie; Stephanie Menikou; Naomi Lin; Samuel Nichols; Ruud Nijman; Ivonne Pena Paz; Oliver Powell, Priyen Shah; Ching-Fen Shen; Clare Wilson

Clinical recruitment at Imperial College Healthcare NHS Trust (alphabetical order)

Amina Abdulla; Ladan Ali; Sarah Darnell; Rikke Jorgensen; Sobia Mustafa; Salina Persand

Imperial College Faculty of Engineering

Molly Stevens (co-investigator), Eunjung Kim (research group); Benjamin Pierce (research group)

Clinical recruitment at Brighton and Sussex University Hospitals

Katy Fidler (Principle Investigator)

Julia Dudley (Clinical Research Registrar)

Research nurses: Vivien Richmond, Emma Tavliavini

Clinical recruitment at National Cheng Kung University Hospital

Ching-Fen Shen (Principal Investigator); Ching-Chuan Liu (Co-investigator); Shih-Min Wang (Co-investigator), funded by the Center of Clinical Medicine Research, National Cheng Kung University

PARTNER: SERGAS (Spain)

Principal Investigators

Federico Martinón-Torres¹

Antonio Salas^{1,2}

Research Group (alphabetical order)

Fernando Álvarez González¹, Cristina Balo Farto¹, Ruth Barral-Arca^{1,2}, María Barreiro Castro¹, Xabier Bello^{1,2}, Mirian Ben García¹, Sandra Carnota¹, Miriam Cebey-López¹, María José Curras-Tuala^{1,2}, Carlos Durán Suárez¹, Luisa García Vicente¹, Alberto Gómez-Carballa^{1,2}, Jose Gómez Rial¹, Pilar Leboráns Iglesias¹, Federico Martinón-Torres¹, Nazareth Martinón-Torres¹, José María Martinón Sánchez¹, Belén Mosquera Pérez¹, Jacobo Pardo-Seco^{1,2}, Lidia Piñeiro Rodríguez¹, Sara Pishedda^{1,2}, Sara Rey Vázquez¹, Irene Rivero Calle¹, Carmen Rodríguez-Tenreiro¹, Lorenzo Redondo-Collazo¹, Miguel Sadiki Ora¹, Antonio Salas^{1,2}, Sonia Serén Fernández¹, Cristina Serén Trasorras¹, Marisol Vilas Iglesias¹.

¹ Translational Pediatrics and Infectious Diseases, Pediatrics Department, Hospital Clínico Universitario de Santiago, Santiago de Compostela, Spain, and GENVIP Research Group (www.genvip.org), Instituto de Investigación Sanitaria de Santiago, Universidad de Santiago de Compostela, Galicia, Spain.

² Unidade de Xenética, Departamento de Anatomía Patolóxica e Ciencias Forenses, Instituto de Ciencias Forenses, Facultade de Medicina, Universidade de Santiago de Compostela, and GenPop Research Group, Instituto de Investigaciones Sanitarias (IDIS), Hospital Clínico Universitario de Santiago, Galicia, Spain

³ Fundación Pública Galega de Medicina Xenómica, Servizo Galego de Saúde (SERGAS), Instituto de Investigaciones Sanitarias (IDIS), and Grupo de Medicina Xenómica, Centro de Investigación Biomédica en Red de Enfermedades Raras (CIBERER), Universidade de Santiago de Compostela (USC), Santiago de Compostela, Spain

PARTNER: RSU (Latvia)

Principal Investigator

Dace Zavadska^{1,2}

Other RSU group authors (in alphabetical order):

Anda Balode^{1,2}, Arta Bārzdiņa^{1,2}, Dārta Deksnē^{1,2}, Dace Gardovska^{1,2}, Dagne Grāvele², Ilze Grope^{1,2}, Anija Meiere^{1,2}, Ieva Nokaļna^{1,2}, Jana Pavāre^{1,2}, Zanda Pučuka^{1,2}, Katrīna Selecka^{1,2}, Aleksandra Sidorova^{1,2}, Dace Svile², Urzula Nora Urbāne^{1,2}.

¹ Riga Stradins university, Riga, Latvia.

² Children clinical university hospital, Riga, Latvia.

PARTNER: Medical Research Council Unit The Gambia (MRCG) at LSHTM

Principal Investigator

Effua Usuf

Additional Investigators

Kalifa Bojang

Syed M. A. Zaman

Fatou Secka

Suzanne Anderson

Anna Rocalsatou Sarr

Momodou Saidykhan

Saffiatou Darboe

Samba Ceesay

Umberto D'alessandro

Medical Research Council Unit The Gambia at LSHTM

P O Box 273,

Fajara, The Gambia

PARTNER: ERASMUS MC-Sophia Children's Hospital (Netherlands)

Principal Investigator

Henriëtte A. Moll¹

Research Group (alphabetical order)

Dorine M. Borensztajn¹, Nienke N. Hagedoorn, Chantal Tan ¹, ¹, Clementien L. Vermont²,

Joany Zachariasse ¹

Additional investigator

W Dik ³

¹ Erasmus MC-Sophia Children's Hospital, Department of General Paediatrics, Rotterdam, the Netherlands

² Erasmus MC-Sophia Children's Hospital, Department of Paediatric Infectious Diseases & Immunology, Rotterdam, the Netherlands

³ Erasmus MC, Department of immunology, Rotterdam, the Netherlands

PARTNER: Swiss Pediatric Sepsis Study (Switzerland)

Principal Investigators:

Philipp Agyeman, MD ¹ (ORCID 0000-0002-8339-5444), Luregn J Schlapbach, MD, FCICM ^{2,3} (ORCID 0000-0003-2281-2598)

Clinical recruitment at University Children's Hospital Bern for PERFORM:

Christoph Aebi ¹, Verena Wyss ¹, Mariama Usman ¹

Principal and co-investigators for the Swiss Pediatric Sepsis Study:

Philipp Agyeman, MD ¹, Luregn J Schlapbach, MD, FCICM ^{2,3}, Eric Giannoni, MD ^{4,5}, Martin Stocker, MD ⁶, Klara M Posfay-Barbe, MD ⁷, Ulrich Heininger, MD ⁸, Sara Bernhard-Stirnemann, MD ⁹, Anita Niederer-Loher, MD ¹⁰, Christian Kahlert, MD ¹⁰, Giancarlo Natalucci, MD ¹¹, Christa Relly, MD ¹², Thomas Riedel, MD ¹³, Christoph Aebi, MD ¹, Christoph Berger, MD ¹² for the Swiss Pediatric Sepsis Study

¹ Department of Pediatrics, Inselspital, Bern University Hospital, University of Bern, Switzerland

² Neonatal and Pediatric Intensive Care Unit, Children's Research Center, University Children's Hospital Zurich, University of Zurich, Zurich, Switzerland

³ Child Health Research Centre, University of Queensland, and Queensland Children's Hospital, Brisbane, Australia

⁴ Clinic of Neonatology, Department Mother-Woman-Child, Lausanne University Hospital and University of Lausanne, Switzerland

⁵ Infectious Diseases Service, Department of Medicine, Lausanne University Hospital and University of Lausanne, Switzerland

⁶ Department of Pediatrics, Children's Hospital Lucerne, Lucerne, Switzerland

⁷ Pediatric Infectious Diseases Unit, Children's Hospital of Geneva, University Hospitals of Geneva, Geneva, Switzerland

⁸ Infectious Diseases and Vaccinology, University of Basel Children's Hospital, Basel, Switzerland

⁹ Children's Hospital Aarau, Aarau, Switzerland

¹⁰ Division of Infectious Diseases and Hospital Epidemiology, Children's Hospital of Eastern Switzerland St. Gallen, St. Gallen, Switzerland

¹¹ Department of Neonatology, University Hospital Zurich, Zurich, Switzerland

¹² Division of Infectious Diseases and Hospital Epidemiology, and Children's Research Center, University Children's Hospital Zurich, Switzerland

¹³ Children's Hospital Chur, Chur, Switzerland

PARTNER: Liverpool (UK)

Principal Investigators

Enitan D Carrol^{1,2,3}

Stéphane Paulus¹.

Research Group (alphabetical order)

Elizabeth Cocklin¹, Rebecca Jennings⁴, Joanne Johnston⁴, Simon Leigh¹, Karen Newall⁴, Sam Romaine¹

¹ Department of Clinical Infection, Microbiology and Immunology, University of Liverpool Institute of Infection and Global Health , Liverpool, England

² Alder Hey Children's Hospital, Department of Infectious Diseases, Eaton Road, Liverpool,
L12 2AP

³ Liverpool Health Partners, 1st Floor, Liverpool Science Park, 131 Mount Pleasant, Liverpool,
L3 5TF

⁴ Alder Hey Children's Hospital, Clinical Research Business Unit, Eaton Road, Liverpool, L12
2AP

PARTNER: NKUA (Greece)

Principal investigator

Professor Maria Tsolia (all activities)

Investigator/Research fellow

Irini Eleftheriou (all activities)

Additional investigators

Recruitment: Maria Tambouratzi

Lab: Antonis Marmarinos (Quality Manager)

Lab: Marietta Xagorari

Kelly Syggelou

²nd Department of Pediatrics, National and Kapodistrian University of Athens,

"P. and A. Kyriakou" Children's Hospital

Thivon and Levadias

Goudi, Athens

PARTNER : Micropathology Ltd (UK)

Principal Investigator

Professor Colin Fink¹, Clinical Microbiologist

Additional investigators

Dr Marie Voice¹, Post doc scientist

Dr. Leo Calvo-Bado¹, Post doc scientist

¹ Micropathology Ltd, The Venture Center, University of Warwick Science Park, Sir William Lyons Road, Coventry, CV4 7EZ.

PARTNER : Medical University of Graz (MUG, Austria)

Principal Investigator

Werner Zenz¹ (all activities)

Co-investigators (alphabetical order)

Benno Kohlmaier¹ (all activities)

Nina A. Schweintzger¹ (all activities)

Manfred G. Sagmeister¹ (study design, consortium wide sample management)

Research team

Daniela S. Kohlfürst¹ (study design)

Christoph Zurl¹ (BIVA PIC)

Alexander Binder¹ (grant application)

Recruitment team, data managers, (alphabetical order)

Susanne Hösele¹, Manuel Leitner¹, Lena Pözl¹, Glorija Rajic¹,

Clinical recruitment partners (alphabetical order)

Sebastian Bauchinger¹, Hinrich Baumgart⁴, Martin Benesch³, Astrid Ceolotto¹, Ernst Eber², Siegfried Gallistl¹, Gunther Gores⁵, Harald Haidl¹, Almuthe Hauer¹, Christa Hude¹, Markus Keldorfer⁵, Larissa Krenn⁴, Heidemarie Pilch⁵, Andreas Pfleger², Klaus Pfurtscheller⁴, Gudrun Nordberg⁵, Tobias Niedrist⁸, Siegfried Rödl⁴, Andrea Skrabl-Baumgartner¹, Matthias Sperl⁷, Laura Stampfer⁵, Volker Strenger³, Holger Till⁶, Andreas Trobisch⁵, Sabine Löffler⁵

¹ Department of Pediatrics and Adolescent Medicine, Division of General Pediatrics, Medical University of Graz, Graz, Austria

²Department of Pediatric Pulmonology, Medical University of Graz, Graz, Austria

³Department of Pediatric Hematooncoloy, Medical University of Graz, Graz, Austria

⁴Paediatric Intensive Care Unit, Medical University of Graz, Graz, Austria

⁵University Clinic of Paediatrics and Adolescent Medicine Graz, Medical University Graz, Graz, Austria

⁶Department of Paediatric and Adolescence Surgery, Medical University Graz, Graz, Austria

⁷Department of Pediatric Orthopedics, Medical University Graz, Graz, Austria

⁸Clinical Institute of Medical and Chemical Laboratory Diagnostics, Medical University Graz, Graz, Austria

PARTNER: London School of Hygiene and Tropical Medicine (UK)

WP 1 WP2, WP5

Principal Investigator:

Dr Shunmay Yeung^{1,2,3} PhD, MBBS, FRCPCH, MRCP, DTM&H

Research Group

Dr Juan Emmanuel Dewez¹ MD, DTM&H, MSc

Prof Martin Hibberd¹ BSc, PhD

Mr David Bath² MSc, MappFin, BA(Hons)

Dr Alec Miners² BA(Hons), MSc, PhD

Dr Ruud Nijman³ PhD MSc MD MRCPCH

Dr Catherine Wedderburn¹ BA, MBChB, DTM&H, MSc, MRCPCH

Ms Anne Meierford¹ MSc, BmedSc, BMBS

Dr Baptiste Laurent⁴, PhD, MSc

1. Faculty of Infectious and Tropical Disease, London School of Hygiene and Tropical Medicine, London, UK
2. Faculty of Public Health and Policy, London School of Hygiene and Tropical Medicine, London, UK
3. Department of Paediatrics, St. Mary's Hospital Imperial College Hospital, London, UK
4. Faculty of Epidemiology and Population Health, London School of Hygiene and Tropical Medicine, London, UK

PARTNER: Radboud University Medical Center (RUMC, Netherlands)

Principal Investigators

Ronald de Groot ¹, Michiel van der Flier ^{1,2,3}, Marien I. de Jonge¹

Co-investigators Radboud University Medical Center (alphabetical order)

Koen van Aerde^{1,2}, Wynand Alkema¹, Bryan van den Broek¹, Jolein Gloerich¹, Alain J. van Gool¹, Stefanie Henriët^{1,2}, Martijn Huijnen¹, Ria Philipsen¹, Esther Willems¹

Investigators PeDBIG PERFORM DUTCH CLINICAL NETWORK (alphabetical order)

G.P.J.M. Gerrits⁸, M. van Leur⁸, J. Heidema ⁴, L. de Haan^{1,2}, C.J. Miedema ⁵, C. Neeleman ¹
C.C. Obihara ⁶, G.A. Tramper-Stranders^{7,6}

1. Radboud University Medical Center, Nijmegen, The Netherlands
2. Amalia Children's Hospital, Nijmegen, The Netherlands
3. Wilhelmina Children's Hospital, University Medical Center Utrecht, Utrecht, The Netherlands
4. St. Antonius Hospital, Nieuwegein, The Netherlands
5. Catharina Hospital, Eindhoven, The Netherlands
6. ETZ Elisabeth, Tilburg, The Netherlands
7. Franciscus Gasthuis, Rotterdam, The Netherlands
8. Canisius Wilhelmina Hospital, Nijmegen, The Netherlands

PARTNER: Oxford (UK)

Principal Investigators

Andrew J. Pollard^{1,2}, Rama Kandasamy^{1,2}, Stéphane Paulus^{1,2}

Additional Investigators

Michael J. Carter^{1,2}, Daniel O'Connor^{1,2}, Sagida Bibi^{1,2}, Dominic F. Kelly^{1,2}, Meeru Gurung³, Stephen Thorson³, Imran Ansari³, David R. Murdoch⁴, Shrijana Shrestha³.

¹Oxford Vaccine Group, Department of Paediatrics, University of Oxford, Oxford, United Kingdom.

²NIHR Oxford Biomedical Research Centre, Oxford, United Kingdom.

³Paediatric Research Unit, Patan Academy of Health Sciences, Kathmandu, Nepal.

⁴Department of Pathology, University of Otago, Christchurch, New Zealand.

PARTNER: Newcastle University, Newcastle upon Tyne, (UK)

Principal Investigator

Marieke Emonts^{1,2,3} (all activities)

Co-investigators

Emma Lim^{2,3,7} (all activities)

Lucille Valentine⁴

Recruitment team (alphabetical), data-managers, and GNCH Research unit

Karen Allen⁵, Kathryn Bell⁵, Adora Chan⁵, Stephen Crulley⁵, Kirsty Devine⁵, Daniel Fabian⁵, Sharon King⁵, Paul McAlinden⁵, Sam McDonald⁵, Anne McDonnell^{2,5}, Ailsa Pickering^{2,5}, Evelyn Thomson⁵, Amanda Wood⁵, Diane Wallia⁵, Phil Woodsford⁵,
Sample processing: Frances Baxter⁵, Ashley Bell⁵, Mathew Rhodes⁵

PICU recruitment

Rachel Agbeko⁸

Christine Mackerness⁸

Students MOFICHE

Bryan Baas², Lieke Kloosterhuis², Wilma Oosthoek²

Students/medical staff PERFORM

Tasnim Arif⁶, Joshua Bennet², Calvin Collings², Ilona van der Giessen², Alex Martin², Aqeela Rashid⁶, Emily Rowlands², Gabriella de Vries², Fabian van der Velden²

Engagement work/ethics/cost effectiveness

Lucille Valentine⁴, Mike Martin⁹, Ravi Mistry², Lucille Valentine⁴

¹ Translational and Clinical Research Institute, Newcastle University, Newcastle upon Tyne
UK

²Great North Children's Hospital, Paediatric Immunology, Infectious Diseases & Allergy,
Newcastle upon Tyne Hospitals NHS Foundation Trust, Newcastle upon Tyne, United
Kingdom.

³NIHR Newcastle Biomedical Research Centre based at Newcastle upon Tyne Hospitals NHS
Trust and Newcastle University, Westgate Rd, Newcastle upon Tyne NE4 5PL, United
Kingdom

⁴Newcastle University Business School, Centre for Knowledge, Innovation, Technology and
Enterprise (KITE), Newcastle upon Tyne, United Kingdom

⁵Great North Children's Hospital, Research Unit, Newcastle upon Tyne Hospitals NHS
Foundation Trust, Newcastle upon Tyne, United Kingdom.

⁶Great North Children's Hospital, Paediatric Oncology, Newcastle upon Tyne Hospitals NHS
Foundation Trust, Newcastle upon Tyne, United Kingdom.

⁷Population Health Sciences Institute, Newcastle University, Newcastle upon Tyne, UK

⁸Great North Children's Hospital, Paediatric Intensive Care Unit, Newcastle upon Tyne Hospitals NHS Foundation Trust, Newcastle upon Tyne, United Kingdom.

⁹Northumbria University, Newcastle upon Tyne, United Kingdom.

PARTNER: LMU Munich (Germany)

Principal Investigator

Ulrich von Both^{1,2} MD, FRCPCH (all activities)

Research group

Laura Kolberg¹ MSc (all activities)

Manuela Zwerenz¹ MSc, Judith Buschbeck¹ PhD

Clinical recruitment partners (alphabetical order)

Christoph Bidlingmaier³, Vera Binder⁴, Katharina Danhauser⁵, Nikolaus Haas¹⁰, Matthias Griese⁶, Tobias Feuchtinger⁴, Julia Keil⁹, Matthias Kappler⁶, Eberhard Lurz⁷, Georg Muench⁸, Karl Reiter⁹, Carola Schoen⁹

¹Div. Paediatric Infectious Diseases, Hauner Children's Hospital, University Hospital, Ludwig Maximilians University (LMU), Munich, Germany

²German Center for Infection Research (DZIF), Partner Site Munich, Munich, Germany

³Div. of General Paediatrics, ⁴Div. Paediatric Haematology & Oncology, ⁵Div. of Paediatric Rheumatology, ⁶Div. of Paediatric Pulmonology, ⁷Div. of Paediatric Gastroenterology,

⁸Neonatal Intensive Care Unit, ⁹Paediatric Intensive Care Unit Hauner Children's Hospital, University Hospital, Ludwig Maximilians University (LMU), Munich, Germany, ¹⁰Department Pediatric Cardiology and Pediatric Intensive Care, University Hospital, Ludwig Maximilians University (LMU), Munich, Germany

PARTNER: bioMérieux (France)

Principal Investigator

François Mallet^{1,2,3}

Research Group

Karen Brengel-Pesce^{1,2,3}

Alexandre Pachot¹

Marine Mommert^{1,2}

¹Open Innovation & Partnerships (OIP), bioMérieux S.A., Marcy l'Etoile, France

²Joint research unit Hospice Civils de Lyon – bioMérieux, Centre Hospitalier Lyon Sud, 165
Chemin du Grand Revoyet, 69310 Pierre-Bénite, France

³EA 7426 Pathophysiology of Injury-induced Immunosuppression, University of Lyon1-
Hospices Civils de Lyon-bioMérieux, Hôpital Edouard Herriot, 5 Place d'Arsonval, 69437 Lyon
Cedex 3, France

PARTNER: University Medical Centre Ljubljana (Slovenia)

Principal Investigator

Marko Pokorn^{1,2,3} MD, PhD

Research Group

Mojca Kolnik¹ MD, Katarina Vincek¹ MD, Tina Plankar Srovin¹ MD, PhD, Natalija Bahovec¹
MD, Petra Prunk¹ MD, Veronika Osterman¹ MD, Tanja Avramoska¹ MD

¹Department of Infectious Diseases, University Medical Centre Ljubljana, Japljeva 2, SI-1525
Ljubljana, Slovenia

²University Childrens' Hospital, University Medical Centre Ljubljana, Ljubljana, Slovenia

³Department of Infectious Diseases and Epidemiology, Faculty of Medicine, University of Ljubljana, Slovenia

PARTNER: Amsterdam, Academic Medical Hospital & Sanquin Research Institute

(Netherlands)

Principal Investigator

Taco Kuijpers ^{1,2}

Co-investigators

Ilse Jongerius ²

Recruitment team (EUCLIDS, PERFORM)

J.M. van den Berg¹, D. Schonenberg¹, A.M. Barendregt¹, D. Pajkrt¹, M. van der Kuip^{1,3}, A.M. van Furth^{1,3}

Students PERFORM

Evelien Sprenkeler ², Judith Zandstra ²

Technical support PERFORM

G. van Mierlo ², J. Geissler ²

¹ Amsterdam University Medical Center (Amsterdam UMC), location Academic Medical Center (AMC), Dept of Pediatric Immunology, Rheumatology and Infectious Diseases, University of Amsterdam, Amsterdam, the Netherlands

² Sanquin Research Institute, & Landsteiner Laboratory at the AMC, University of Amsterdam, Amsterdam, the Netherlands.

³ Amsterdam University Medical Center (Amsterdam UMC), location Vrije Universiteit Medical Center (VUMC), Dept of Pediatric Infectious Diseases and Immunology, Free University (VU), Amsterdam, the Netherlands (former affiliation)

1.3 UK Kawasaki Disease Genetic Consortium

Dept of Paediatrics, Imperial College London; Professor M Levin, Rachel Galassini , Dr

Victoria Wright, Dr Jethro Herberg

Addenbrookes Hospital, Cambridge: Dr Y Singh (PI), J Bytham, J Sharp

Airedale General Hospital Dr P Bala (PI), A Kitching

Alder Hey children's Hospital: Dr S Paulus (PI), Prof E Carol (PI), Dr B Larru (PI). S

Wadeson, J Johnstone, R Jennings

Birmingham Children's Hospital; Dr A Chickermane (PI), K Cotter

Bradford Royal Infirmary: Dr H Jepps (PI); T Booth, R Swingler

Bristol Royal Infirmary: Prof R Tulloh (PI); Karen Sheehan

Burton Hospital: Dr M Ahmed (PI), S Boswell, C Backhouse

Calderdale Royal Hospital Dr M Olabi (PI), KU Rahman (PI), S Kilroy, M Home

Durham & Darlington NHS Trust: Dr T Banerjee (PI), Dr G Nyamugunduru (PI), A Cowton, D

Egginton

East Surrey Hospital; Dr M Jawad (PI)L Bailey

Evelina Children's Hospital: Dr E Menson (PI)

Great Ormond Street Hospital, Dr P Brogan (PI), Y Glackin

Harrogate Hospital: Miss C Brunskill (PI)

Heartlands Hospital Dr S Hackett (PI), J Daglish

Hereford County Hospital Dr S Meyrick (PI), E Collins

Hull University Teaching Hospital, Mr D Bolton (PI)

Imperial College Healthcare NHS Trust; Dr J Herberg (PI), S Gormley, S Mustafa

Ipswich Hospital: Dr P Desai (PI) L Hunt

Kingston Hospital Dr T Chawatama (PI), Dr S Luck (PI), J Crooks, T O'Brien

Leeds General Infirmary Dr S O'Riordan (PI), N Balatoni, N Maher

Macclesfield General Hospital: Dr Chandrasekaran (PI), N Keenan

New Cross Hospital, Wolverhampton, Dr K Davies (PI), S Kempson, C Busby

North Manchester General Hospital: Dr E Odeka (PI), G O'Connor
North Tees & Hartlepool Dr I Haar (PI), G Osborne, H Walker
Northwick Park Hospital: Dr A Williams (PI)
Oldham Hospital Dr E Odeka (PI), L Woodward, C Rishton
Peterborough City Hospital; Dr V Puthi (PI), A Pearson, P Goodyear
Pinderfields General Hospital, Dr C Davidson (PI), Dr N De Vere (PI), G Castle
Royal Albert Edward Infirmary, Dr M Farrier (PI), N Pemberton
Royal Bolton Hospital: Dr S Misra (PI), C Fish, P Graham, J Henry
Royal Lancaster Infirmary, Dr A Olabi (PI) K Allison
Royal Shrewsbury Hospital: Dr A Kannivelu (PI), Mr J Jones (PI)
Royal Stoke University Hospital: Dr J Alexander (PI) E Roe, R Pringle, A Cope
Sheffield Children's Hospital, Dr F Shackley (PI), S Gormley
South Tees Hospital: Dr R Kumar (PI), GMcilhinney, S Armstrong
St George's Hospital, Tooting, Prof P Heath (PI), E Vitale, J Stuart
St Richard's Hospital, Chichester: Dr N Brennan (PI), S Floyd
Stepping Hill Hospital, Stockport, Dr C Cooper, S Bennett
Tameside Hospital, Dr A Petkar (PI), Dr C Greenway (PI), W Hulse
The Royal Alexandra Hospital, Brighton; Dr K Fidler (PI), K Moscovici, S Sobowieck Kouman
The Royal Brompton Hospital, Dr F Franklin (PI), Dr M Bartsota
The Royal Cornwall Hospital, Dr N Venkata (PI), Dr A Prendiville (PI), Dr O Elmasry (PI),
Mrs H Osborne (PI), G Craig, B Bromage
Torbay Hospital, Dr M Raman (PI), Ms P Fitzell (PI), H Bearne, J Palmer
UK Kawasaki Support Group S Davidson, N Clements