

Supplemental Material

Adjunctive Vasopressors in Patients with Septic Shock: Protocol for a Systematic Review and Meta-Analysis

Seth R. Bauer, Patrick M. Wieruszewski, Brittany D. Bissell, Siddharth Dugar, Gretchen L. Sacha, Ryota Sato, Matthew T. Siuba, Mary Schleicher, Vidula Vachharajani, Yngve Falck-Ytter, Rebecca L. Morgan

Table of Contents

eTable 1. Embase (via Ovid) Search Strategy

eTable 2. Cochrane Central Register of Controlled Trials (CENTRAL) Search Strategy

eFigure 1. Electronic data extraction instrument for included studies

eFigure 2. Electronic risk of bias adjudication instrument for included studies

eTable 1. Embase (via Ovid) Search Strategy

1	exp shock/
2	exp septic shock/
3	exp sepsis/
4	exp systemic inflammatory response syndrome/
5	(shock or septic shock or vasodilatory shock or distributive shock or vasodilatory hypotension or vasoplegia or vasoplegic syndrome or circulatory failure or circulatory collapse or systemic inflammatory response syndrome or sepsis).tw.
6	or/1-5
7	exp vasopressin/
8	exp terlipressin/
9	exp angiotensin II/
10	exp methylene blue/
11	exp hydroxocobalamin/
12	exp dopamine/
13	exp epinephrine/
14	exp phenylephrine/
15	(vasopressin or (arginine adj1 vasopressin) or arg-vasopressin or arg vasopressin or pitressin or vasostrict or pituitrin or selepressin or FE 202158 or (selective adj2 V1a adj2 receptor adj2 agonis*) or terlipressin or terlypressin or glycylopressin or gliopressin or glypressin or triglycyl-lysine-vasopressin or triglycyl lysine vasopressin or riglycylvasopressin or TGLVP or "triglycyl-(8-lysine)vasopressin" or remestyp or terlivaz or angiotensin II or angiotensin* or "ang-(1-8)Octapeptide" or "angiotensin-(1-8) octapeptide" or giapreza or (methylene adj1 blue) or hydroxocobalamin or "vitamin B12" or "vitamin B 12" or cyanokit or (nitric oxide adj2 pathway*) or dopamine or epinephrine or adrenalin* or phenylephrine or neosynephrine or neo-synephrine or adjunctive or additional or secondary).tw.
16	or/7-15
17	exp vasoconstrictor agent/
18	exp Adrenergic Agents/
19	exp norepinephrine/
20	(vasopressor* or vasoactive or catecholamine* or norepinephrine or noradrenalin* or levonorepinephrine or arterenol or levarterenol).tw.
21	or/17-20

22	exp randomized controlled trial/ or exp clinical trial/
23	(randomized or randomised or RCT* or trial*).tw.
24	(study or studies).ti.
25	((randomized or randomised or clinical or controlled) adj3 (trial* or study or studies)).ti.
26	((singl* or doubl* or tripl*) adj2 (blind* or mask*)).ti.
27	(phase 1 or phase i or phase 2* or phase ii* or phase 3* or phase iii* or phase 4 or phase iv or placebo* or allocat* or cohort*).ti.
28	or/22-27
29	6 and 16 and 21 and 28
30	limit 29 to english language

eTable 2. Cochrane Central Register of Controlled Trials (CENTRAL) Search Strategy

1	[mh Shock]
2	[mh "Shock, Septic"]
3	[mh Sepsis]
4	[mh "Systemic Inflammatory Response Syndrome"]
5	(shock or septic shock or vasodilatory shock or distributive shock or vasodilatory hypotension or vasoplegia or vasoplegic syndrome or circulatory failure or circulatory collapse or systemic inflammatory response syndrome or sepsis):ti,ab
6	[OR #1-#5]
7	[mh Vasopressins]
8	[mh Terlipressin]
9	[mh "Angiotensin II"]
10	[mh "Methylene Blue"]
11	[mh Hydroxocobalamin]
12	[mh Dopamine]
13	[mh Epinephrine]
14	[mh Phenylephrine]
15	(vasopressin or (arginine NEAR/1 vasopressin) or arg-vasopressin or arg vasopressin or pitressin or vasostrict or pituitrin or selepressin or FE 202158 or (selective NEAR/2 V1a NEAR/2 receptor NEAR/2 agonis*) or terlipressin or terlypressin or glycylypressin or glipressin or glypressin or triglycyl-lysine-vasopressin or triglycyl lysine vasopressin or riglycylvasopressin or TGLVP or "triglycyl-(8-lysine)vasopressin" or remestyp or terlivaz or angiotensin II or angiotensin* or "ang-(1-8)Octapeptide" or "angiotensin-(1-8) octapeptide" or giapreza or (methylene NEAR/1 blue) or hydroxocobalamin or "vitamin B12" or "vitamin B 12" or cyanokit or (nitric oxide NEAR/2 pathway*) or dopamine or epinephrine or adrenalin* or phenylephrine or neosynephrine or neo-synephrine or adjunctive or additional or secondary):ti,ab
16	[OR #7-#15]
17	[mh "Vasoconstrictor Agents"]
18	[mh "Adrenergic Agents"]
19	[mh Norepinephrine]
20	(vasopressor* or vasoactive or catecholamine* or norepinephrine or noradrenalin* or levonorepinephrine or arterenol or levarterenol):ti,ab

21	[OR #17-#20]
22	[mh "randomized controlled trial"] or [mh "clinical trial"] or randomized controlled trial:pt
23	(randomized or randomised or RCT* or trial*):ti,ab
24	(study or studies):ti
25	((randomized or randomised or clinical or controlled) NEAR/3 (trial* or study or studies)):ti
26	((singl* or doubl* or tripl*) NEAR/2 (blind* or mask*)):ti
27	(phase 1 or phase i or phase 2* or phase ii* or phase 3* or phase iii* or phase 4 or phase iv or placebo* or allocat* or cohort*):ti
28	[OR #22-#27]
29	#6 AND #16 AND #21 AND #28 in Trials

eFigure 1. Electronic data extraction instrument for included studies

Citation, population, intervention, comparator, and methodologic data

First Author and Year

Upload primary study report utilized for this data extraction

Any additional study reports to upload?

- Yes
 No
-

Number of additional reports

- 1
 2
 3
-

Upload additional study report utilized for this data extraction

Upload second additional study report utilized for this data extraction

Upload third additional study report utilized for this data extraction

Study Characteristics

Study Report Type

- Manuscript
 Abstract
 Regulatory documents
 Trial register
(Check all that apply)
-

Study Confirmed as Meeting Inclusion Criteria?

- Yes
 No
-

Trial Funding Mechanism

- Government
 Industry
 Foundation
 Institutional
 Multiple
-

Multiple Funding Mechanisms

(List types (government, industry, foundation, institutional))

Single or Multi-Center?

- Multiple
 Single
-

Number of Study Centers

Country

- Multiple
- USA
- Austria
- Brazil
- China
- Czech Republic
- Egypt
- England
- India
- Iran
- Italy
- Russia
- Other

Other Country

Setting

- ICU
- Other

Other Setting

Study Enrollment Start

(Year only)

Study Enrollment End

(Year only)

Outcomes Assessed

- Short-term mortality (28-30d, ICU)
 - Intermediate-term mortality (60d, Hospital)
 - Kidney replacement therapy
 - Digital/peripheral ischemia
 - Venous thromboembolism
- (Check all that apply)

Reminder: Complete risk of bias form for each outcome assessed

Authors' financial relationship and other potential conflicts of interest

(Copy/Paste from report)

Patient Characteristics

Subjects Randomized in INTERVENTION Arm

Subjects Randomized in COMPARATOR Arm

Age central tendency and variance type

- mean (SD)
- median (IQR)

Age, mean

(Years. Prefer value in all included patients, if not available, collect value from intervention group.)

Age, standard deviation

(Years. Prefer value in all included patients, if not available, collect value from intervention group.)

Age, median

(Years. Prefer value in all included patients, if not available, collect value from intervention group.)

Age, interquartile range

(Years. Prefer value in all included patients, if not available, collect value from intervention group.)

Female, %

(Percentage from 0 to 100. Prefer value in all included patients, if not available, collect value from intervention group.)

White race, %

(Percentage from 0 to 100. Prefer value in all included patients, if not available, collect value from intervention group.)

Body weight reported?

- Yes
 No
-

Weight, kg

(Either mean or median overall sample (or intervention) body weight.)

Septic shock, %

(Overall study cohort; Percentage from 0 to 100)

Baseline Vasopressors at Enrollment, %

(Overall study cohort; Percentage from 0 to 100)

Baseline Vasopressors at Enrollment

- Norepinephrine
 Dopamine
 Epinephrine
 Phenylephrine
 Vasopressin
(Check all that apply)

Baseline NE dose type Norepinephrine-equivalent dose (NEQ)
 Norepinephrine dose
 Not applicable
(NEQ preferred, if available)

Baseline NE dose units mcg/min
 mcg/kg/min

Baseline NE dose central tendency and variance type mean (SD)
 median (IQR)

Baseline NE dose, mean _____
(Prefer value in all included patients, if not available, collect value from intervention group. If only receiving dopamine denote in field)

Baseline NE dose, standard deviation _____

Baseline NE dose, median _____
(Prefer value in all included patients, if not available, collect value from intervention group. If only receiving dopamine denote in field)

Baseline NE dose, interquartile range _____

Baseline APACHE II score central tendency and variance type mean (SD)
 median (IQR)

Baseline APACHE II, mean _____
(Prefer value in all included patients, if not available, collect value from intervention group)

Baseline APACHE II, standard deviation _____
(Prefer value in all included patients, if not available, collect value from intervention group)

Baseline APACHE II, median _____

Baseline APACHE II, IQR _____

Intervention Characteristics

MAP target

- ≥ 65
- ≥ 70
- 65-75
- Other
(mm Hg)

Other MAP goal (mm Hg)

Adjunctive vasopressor group

- Vasopressin analogue (vasopressin, terlipressin, selepressin, pituitrin)
- Angiotensin II
- Methylene blue and hydroxocobalamin
- Catecholamine vasopressor (dopamine, epinephrine, phenylephrine)

Specific Adjunctive Vasopressor

- Vasopressin
- Terlipressin
- Selepressin
- Pituitrin
- Angiotensin II
- Methylene Blue
- Hydroxocobalamin
- Epinephrine
- Phenylephrine
- Dopamine

Relevant Study Co-Interventions?

- Yes
- No

Describe co-interventions in detail (name, dose, duration)

(Copy/Paste from report)

Administration type

- IV infusion
- IV bolus
- IV bolus + infusion

Infusion starting dose

(Include units)

Infusion minimum dose

(Include units)

Infusion maximum dose

(Include units)

IV bolus dose

(Include units)

IV bolus frequency

- Once
- Scheduled frequency

Scheduled frequency

(Eg: q4h, q6h, etc.)

Hours from shock onset to enrollment

(Mean (SD); if median (IQR or range) reported denote in field)

Comparator Characteristics

Comparator type

- Placebo with open-label standard care vasopressor
 - Blinded standard care vasopressor
 - Only open-label standard care vasopressor
-

Blinded standard care vasopressor starting dose

(Include units)

Blinded standard care vasopressor minimum dose

(Include units)

Blinded standard care vasopressor maximum dose

(Include units)

Outcomes

Short-term mortality timepoint

- 28-day
 - 30-day
 - ICU
-

Short-term mortality in INTERVENTION group, numerator

(Numerator)

Short-term mortality in INTERVENTION group, denominator

(Denominator)

Short-term mortality in COMPARATOR group, numerator

(Numerator)

Short-term mortality in COMPARATOR group, denominator

(Denominator)

Intermediate-term mortality timepoint

- 60-day
 - Hospital
-

Intermediate-term mortality in INTERVENTION group, numerator

(Numerator)

Intermediate-term mortality in INTERVENTION group,
denominator

(Denominator)

Intermediate-term mortality in COMPARATOR group,
numerator

(Numerator)

Intermediate-term mortality in COMPARATOR group,
denominator

(Denominator)

Kidney-replacement therapy in INTERVENTION group,
numerator

(Numerator)

Kidney-replacement therapy in INTERVENTION group,
denominator

(Denominator)

Kidney-replacement therapy in COMPARATOR group,
numerator

(Numerator)

Kidney-replacement therapy in COMPARATOR group,
denominator

(Denominator)

Digital/peripheral ischemia in INTERVENTION group,
numerator

(Numerator)

Digital/peripheral ischemia in INTERVENTION group,
denominator

(Denominator)

Digital/peripheral ischemia in COMPARATOR group,
numerator

(Numerator)

Digital/peripheral ischemia in COMPARATOR group,
denominator

(Denominator)

Venous thromboembolism in INTERVENTION group,
numerator

(Numerator. Includes both DVT and PE if reported
separately)

Venous thromboembolism in INTERVENTION group,
denominator

(Denominator. Includes both DVT and PE if reported
separately)

Venous thromboembolism in COMPARATOR group, numerator

(Numerator. Includes both DVT and PE if reported separately)

Venous thromboembolism in COMPARATOR group, denominator

(Denominator. Includes both DVT and PE if reported separately)

Include additional study notes or comments here

eFigure 2. Electronic risk of bias adjudication instrument for included studies

Risk of bias assessment

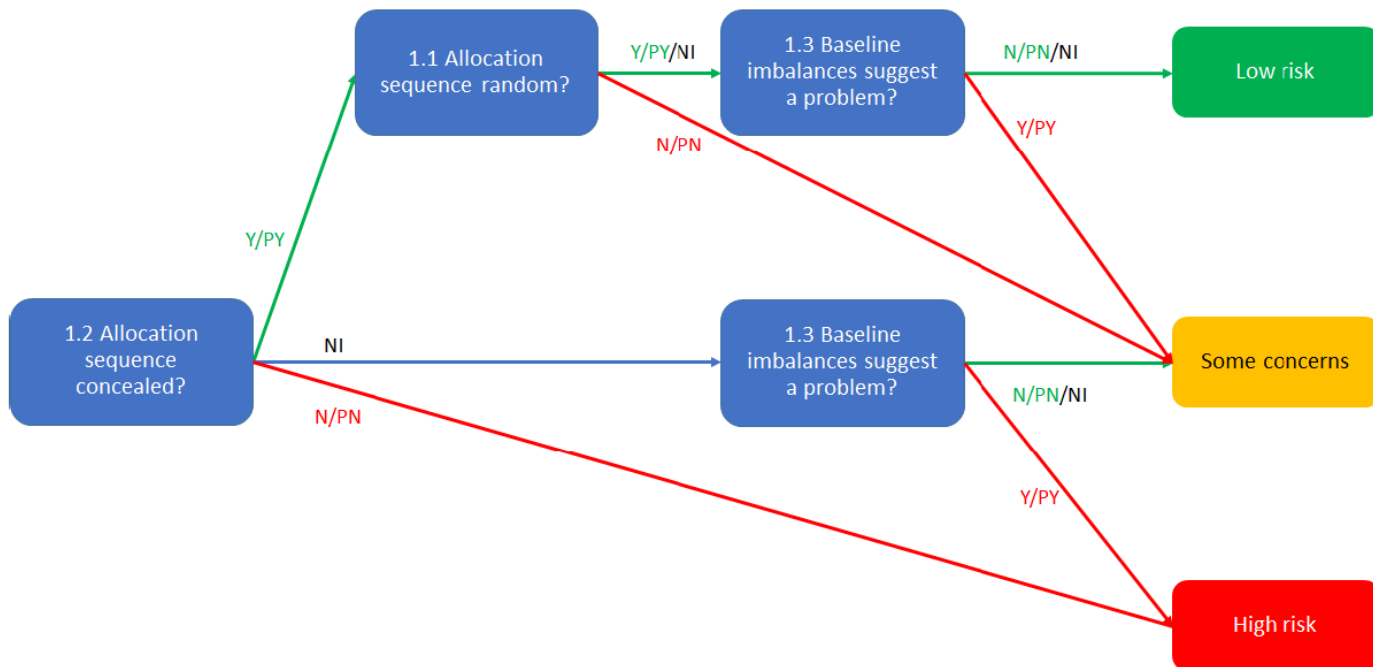
First Author and Year

See attached "Cribsheet" for brief explanation of each signaling question in RoB 2

[Attachment: "20190814_RoB_2.0_cribsheet_parallel_trial .pdf"]

1. Bias arising from the randomization process

	Yes (Y)	Probably Yes (PY)	No (N)	Probably No (PN)	No Information (NI)
1.1 Was the allocation sequence random?	<input type="radio"/>	<input type="radio"/>	<input type="radio"/>	<input type="radio"/>	<input type="radio"/>
1.2 Was the allocation sequence concealed until participants were enrolled and assigned to interventions?	<input type="radio"/>	<input type="radio"/>	<input type="radio"/>	<input type="radio"/>	<input type="radio"/>
1.3 Did baseline differences between intervention groups suggest a problem with the randomization process?	<input type="radio"/>	<input type="radio"/>	<input type="radio"/>	<input type="radio"/>	<input type="radio"/>



1. Risk of bias judgment: Randomization

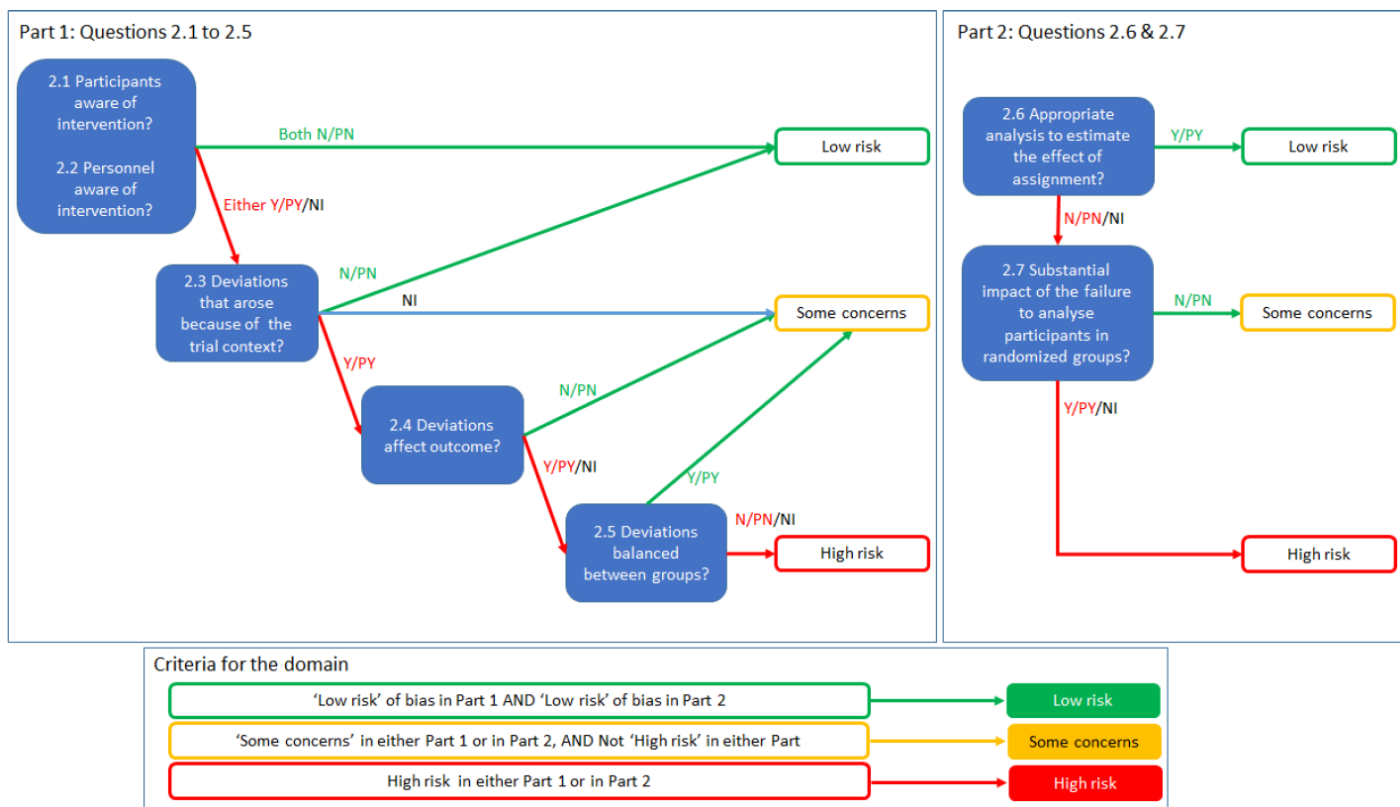
- Low
 - High
 - Some concerns
- (Use above image, if needed, to assist with adjudication based on signaling question response and corresponding bias risk)

Include justification for judgment related to randomization process here

(Includes direct quotations from study report text, summary of information from a trial report, etc.)

2. Bias due to deviations from intended interventions

	Yes (Y)	Probably Yes (PY)	No (N)	Probably No (PN)	No Information (NI)
2.1 Were participants aware of their assigned intervention during the trial?	<input type="radio"/>	<input type="radio"/>	<input type="radio"/>	<input type="radio"/>	<input type="radio"/>
2.2 Were carers and people delivering the interventions aware of participants' assigned intervention during the trial?	<input type="radio"/>	<input type="radio"/>	<input type="radio"/>	<input type="radio"/>	<input type="radio"/>
2.3 Were there deviations from the intended intervention that arose because of the trial context?	<input type="radio"/>	<input type="radio"/>	<input type="radio"/>	<input type="radio"/>	<input type="radio"/>
2.4 Were these deviations likely to have affected the outcome?	<input type="radio"/>	<input type="radio"/>	<input type="radio"/>	<input type="radio"/>	<input type="radio"/>
2.5 Were these deviations from intended intervention balanced between groups?	<input type="radio"/>	<input type="radio"/>	<input type="radio"/>	<input type="radio"/>	<input type="radio"/>
2.6 Was an appropriate analysis used to estimate the effect of assignment to intervention?	<input type="radio"/>	<input type="radio"/>	<input type="radio"/>	<input type="radio"/>	<input type="radio"/>
2.7 Was there potential for a substantial impact (on the result) of the failure to analyse participants in the group to which they were randomized?	<input type="radio"/>	<input type="radio"/>	<input type="radio"/>	<input type="radio"/>	<input type="radio"/>



2. Risk of bias judgment: Deviations from intended interventions

- Low
 - High
 - Some concerns
- (Use above image, if needed, to assist with adjudication based on signaling question response and corresponding bias risk)

Include justification for judgment related to deviations from intended interventions here

(Includes direct quotations from study report text, summary of information from a trial report, etc.)

3. Bias due to missing outcome data

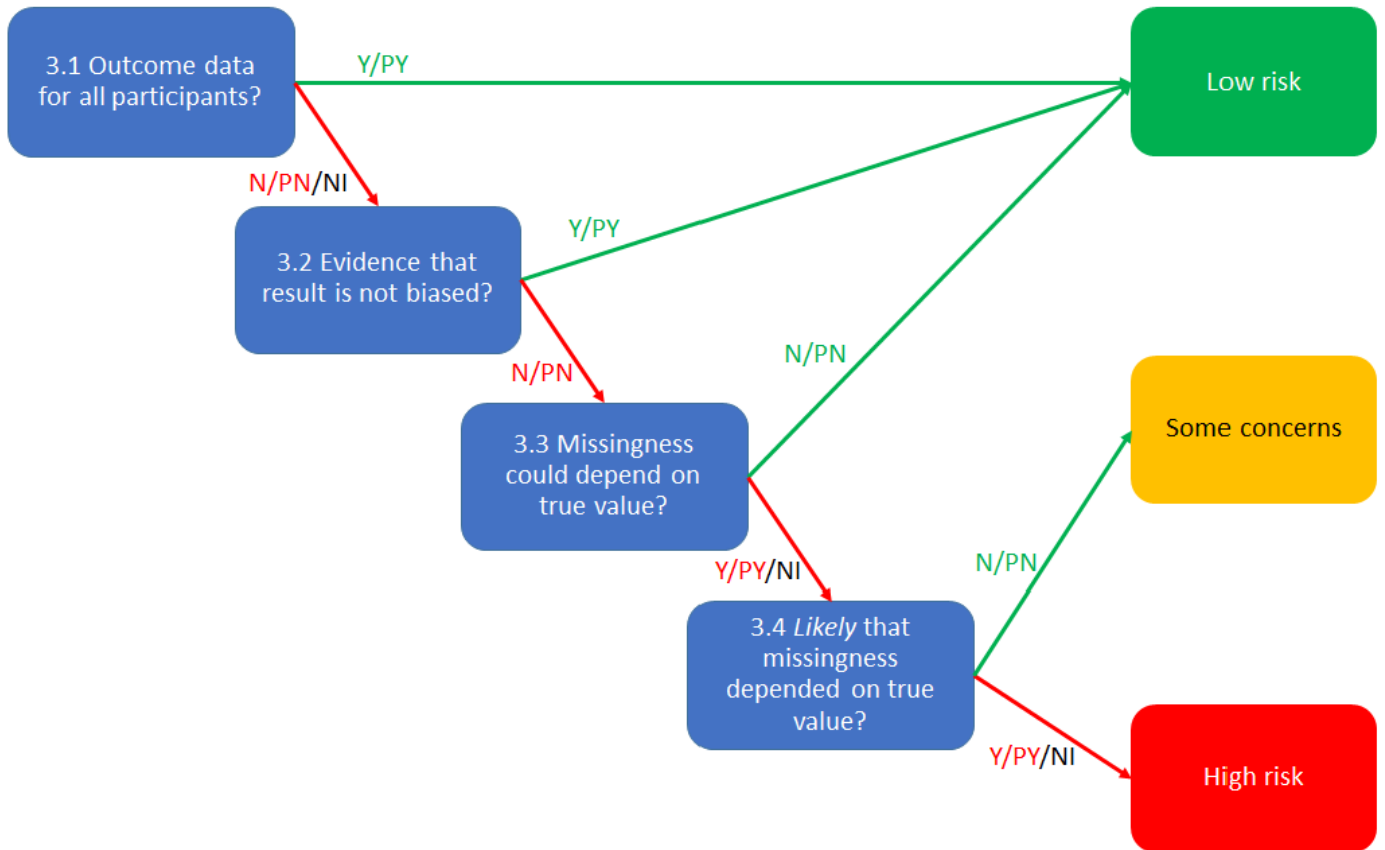
	Yes (Y)	Probably Yes (PY)	No (N)	Probably No (PN)	No Information (NI)
3.1 Were data for this outcome available for all, or nearly all, participants randomised?	<input type="radio"/>	<input type="radio"/>	<input type="radio"/>	<input type="radio"/>	<input type="radio"/>
3.2 Is there evidence that the result was not biased by missing outcome data?	<input type="radio"/>	<input type="radio"/>	<input type="radio"/>	<input type="radio"/>	<input type="radio"/>

3.3 Could missingness in the outcome depend on its true value?

-
-
-
-
-

3.4 Is it likely that missingness in the outcome depended on its true value?

-
-
-
-
-



3. Risk of bias judgment: Missing outcome data

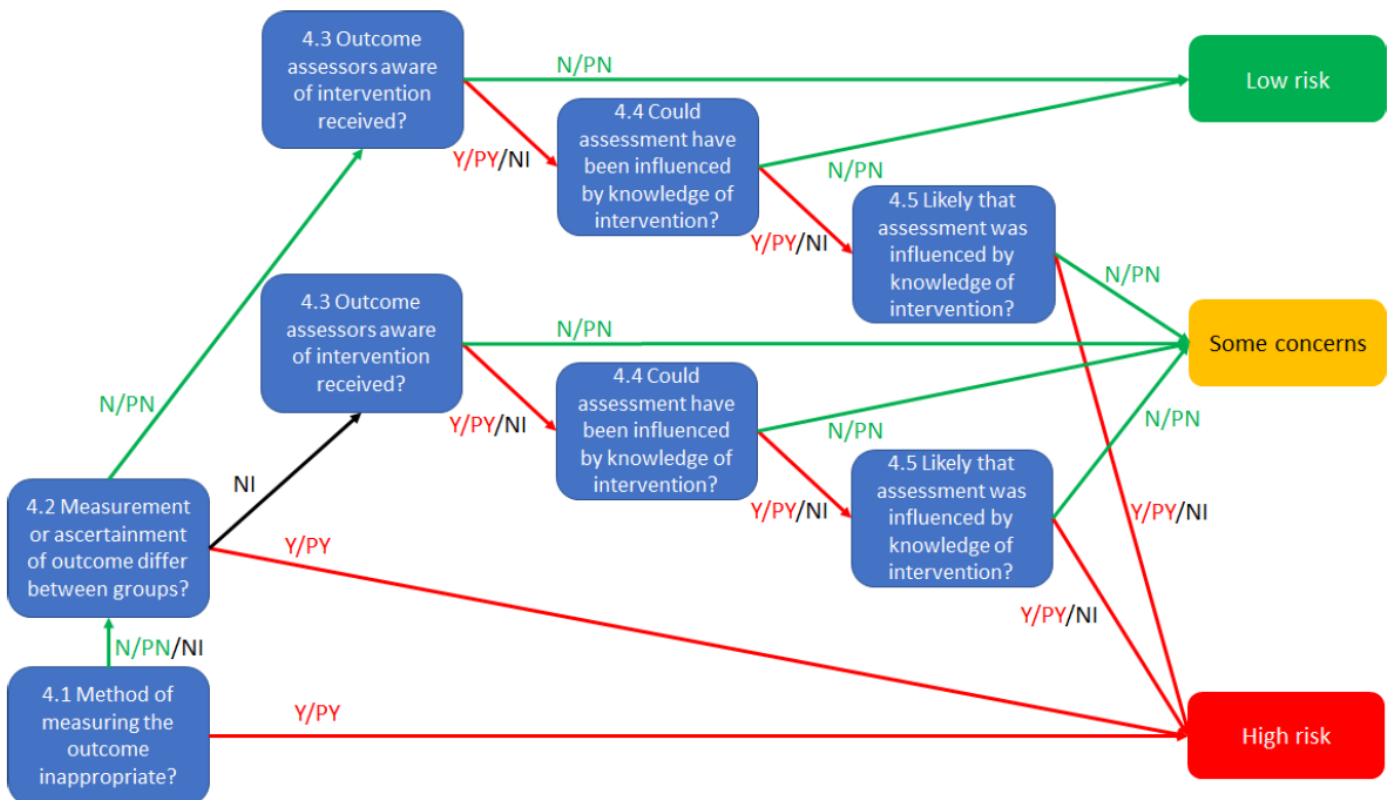
- Low
 - High
 - Some concerns
- (Use above image, if needed, to assist with adjudication based on signaling question response and corresponding bias risk)

Include justification for judgment related to missing outcome data here

(Includes direct quotations from study report text, summary of information from a trial report, etc.)

4. Bias in measurement of the outcome

	Yes (Y)	Probably Yes (PY)	No (N)	Probably No (PN)	No Information (NI)
4.1 Was the method of measuring the outcome inappropriate?	<input type="radio"/>	<input type="radio"/>	<input type="radio"/>	<input type="radio"/>	<input type="radio"/>
4.2 Could measurement or ascertainment of the outcome have differed between intervention groups?	<input type="radio"/>	<input type="radio"/>	<input type="radio"/>	<input type="radio"/>	<input type="radio"/>
4.3 Were outcome assessors aware of the intervention received by study participants?	<input type="radio"/>	<input type="radio"/>	<input type="radio"/>	<input type="radio"/>	<input type="radio"/>
4.4 Could assessment of the outcome have been influenced by knowledge of intervention received?	<input type="radio"/>	<input type="radio"/>	<input type="radio"/>	<input type="radio"/>	<input type="radio"/>
4.5 Is it likely that assessment of the outcome was influenced by knowledge of intervention received?	<input type="radio"/>	<input type="radio"/>	<input type="radio"/>	<input type="radio"/>	<input type="radio"/>



4. Risk of bias judgment: Measurement of the outcome

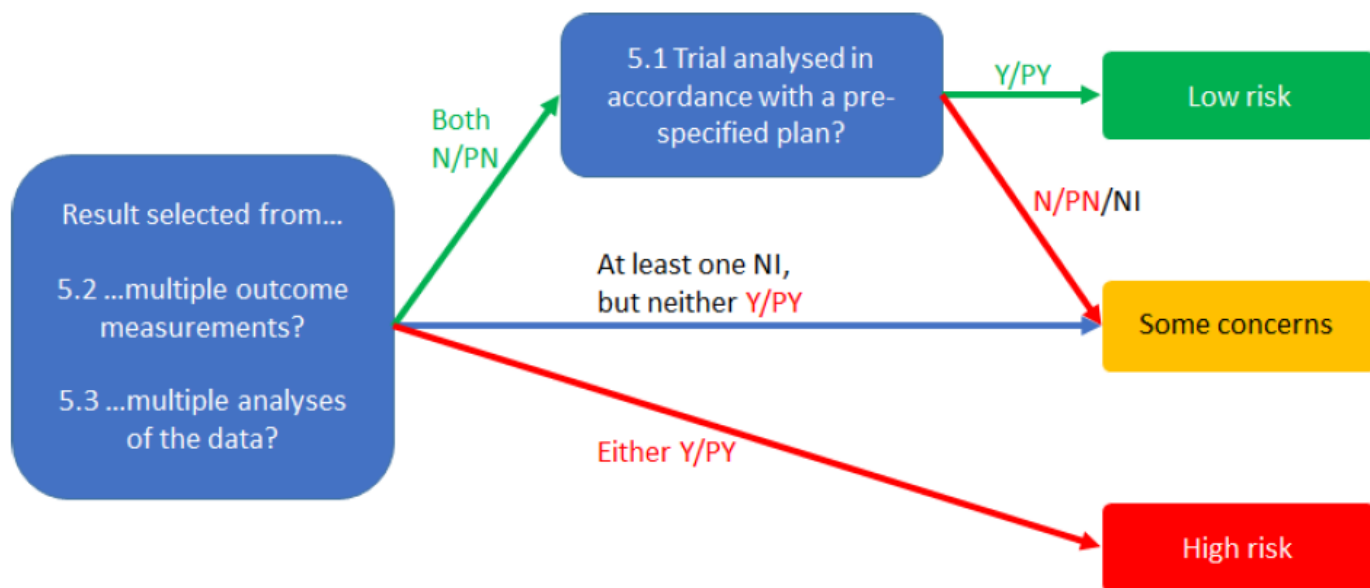
- Low
 - High
 - Some concerns
- (Use above image, if needed, to assist with adjudication based on signaling question response and corresponding bias risk)

Include justification for judgment related to measurement of the outcome here

(Includes direct quotations from study report text, summary of information from a trial report, etc.)

5. Bias in selection of the reported result

	Yes (Y)	Probably Yes (PY)	No (N)	Probably No (PN)	No Information (NI)
5.1 Were the data that produced this result analysed in accordance with a prespecified analysis plan that was finalised before unblinded outcome data were available for analysis?	<input type="radio"/>	<input type="radio"/>	<input type="radio"/>	<input type="radio"/>	<input type="radio"/>
5.2 Is the numerical result being assessed likely to have been selected, on the basis of the results, from multiple eligible outcome measurements (eg, scales, definitions, time points) within the outcome domain?	<input type="radio"/>	<input type="radio"/>	<input type="radio"/>	<input type="radio"/>	<input type="radio"/>
5.3 Is the numerical result being assessed likely to have been selected, on the basis of the results, from multiple eligible analyses of the data?	<input type="radio"/>	<input type="radio"/>	<input type="radio"/>	<input type="radio"/>	<input type="radio"/>



5. Risk of bias judgment: Selection of the reported result

- Low
 - High
 - Some concerns
- (Use above image, if needed, to assist with adjudication based on signaling question response and corresponding bias risk)

Include justification for judgment related to selection of the reported result here

(Includes direct quotations from study report text, summary of information from a trial report, etc.)

Overall risk of bias judgment

- Low
 - High
 - Some concerns
- (Low = The trial is judged to be at low risk of bias for all domains for this result. Some concerns = The trial is judged to raise some concerns in at least one domain for this result, but not to be at high risk of bias for any domain. High = The trial is judged to be at high risk of bias in at least one domain for this result OR The trial is judged to have some concerns for multiple domains in a way that substantially lowers confidence in the result.)

Include justification for judgment related to overall risk of bias here