

1 **Cardiopulmonary Resuscitation Without Aortic Valve Compression Increases Chances of**
2 **Return of Spontaneous Circulation for Patients Experiencing Out-of-hospital Cardiac Arrest**

3

4 Sheng-En Chu, MD^{1,2}, Chun-Yen Huang, MD, MSc¹, Chiao-Yin Cheng, MS^{1,3}, Chun-Hsiang Chan,
5 PhD⁴, Hsuan-An Chen, MD¹, Chin-Ho Chang, PhD⁵, Kuang-Chau Tsai, MD¹, Kuan-Ming Chiu, MD,
6 Prof.^{6,7}, Matthew Huei-Ming Ma, MD, Prof.^{8,9}, Wen-Chu Chiang, MD, Prof.^{8,9*}, Jen-Tang Sun, MD,
7 MSc.^{1,10*}

8

9 ¹Department of Emergency Medicine, Far Eastern Memorial Hospital, New Taipei City, Taiwan

10 ²Institute of Emergency and Critical Care Medicine, College of Medicine, National Yang Ming Chiao
11 Tung University, Taipei, Taiwan

12 ³Graduate Institute of Applied Science and Engineering, Fu Jen Catholic University, New Taipei City,
13 Taiwan.

14 ⁴Department of Geography, National Taiwan Normal University, Taipei, Taiwan.

15 ⁵National Taiwan University Hospital Statistical Consulting Unit, Taipei, Taiwan

16 ⁶Division of Cardiovascular Surgery, Cardiovascular Center, Far Eastern Memorial Hospital, New
17 Taipei City, Taiwan

18 ⁷Department of Electrical Engineering, Yuan Ze University, Taoyuan, Taiwan.

19 ⁸Department of Emergency Medicine, National Taiwan University Hospital, Taipei, Taiwan

20 ⁹Department of Emergency Medicine, National Taiwan University Hospital Yun-Lin Branch, Douliu

21 City, Taiwan

22 ¹⁰Department of Nursing, Cardinal Tien Junior College of Healthcare and Management, Yilan,

23 Taiwan.

24

25 **Short title:** CPR with uncompressed aortic valve increases ROSC

26 ***Corresponding authors**

27 Jen-Tang Sun, MD, MSc

28 Department of Emergency Medicine, Far Eastern Memorial Hospital

29 No.21, Sec. 2, Nan-Ya South Rd., Ban-Qiao Dist., New Taipei City, Taiwan

30 Telephone number: +886-2-89667000 ext. 1125

31 E-mail: tangtang05231980@gmail.com

32 Wen-Chu Chiang, MD, PhD

33 Department of Emergency Medicine, National Taiwan University Hospital, Yun-Lin Branch, Douliu

34 City, Taiwan

35 No. 7, Chung-Shan S. Rd, Taipei, Taiwan

36 Telephone number: +886-2-23123456 ext. 62831

37 Fax number: +886-2-23223150

38 E-mail: drchiang.tw@gmail.com

39

40 **The total word count of the manuscript:** 8837 words (including Title Page, Abstract, Text,

41 References, Tables and Figures Legends)

42

43 **Abstract**

44 **Background**

45 Current cardiopulmonary resuscitation (CPR) guidelines recommend that chest compressions should
46 be applied at “the center of the chest.” However, in approximately 50% of patients experiencing
47 out-of-hospital cardiac arrest (OHCA) the aortic valve (AV) is reportedly compressed, potentially
48 obstructing blood flow and worsening prognosis. We aimed to use resuscitative transesophageal
49 echocardiography (TEE) to elucidate the impact of compressed vs. uncompressed AV on outcomes of
50 adult patients experiencing OHCA.

51

52 **Methods**

53 This prospective single-center observational cohort study included patients experiencing OHCA who
54 underwent resuscitative TEE in the emergency department (ED). Exclusion criteria were early return
55 of spontaneous circulation (ROSC) before TEE, resuscitative endovascular balloon occlusion of the
56 aorta (REBOA) or extracorporeal membrane oxygenation (ECMO) initiation before ROSC,
57 unidentifiable compression site, or poor quality/missing TEE images. Patients were divided into
58 AV-compressed or uncompressed groups based on initial TEE findings. Documented patient
59 characteristics, TEE recordings, resuscitation data, and critical time points were analyzed. Primary
60 outcome was sustained ROSC. Secondary outcomes included end-tidal carbon dioxide (EtCO₂) level
61 at the 10th-minute post-ED arrival, any ROSC, survival to admission and discharge, active

62 withdrawal post-resuscitation, and favorable neurological outcomes at discharge. Sample size was
63 pre-estimated at 37 patients/group.

64

65 **Results**

66 From October 2020 to January 2023, 76 patients were enrolled (39 and 37 patients in the
67 AV-uncompressed and compressed groups, respectively). Intergroup baseline characteristics were
68 similar. The AV-uncompressed group had better probability of sustained ROSC (53.8% vs. 24.3%,
69 odds ratio [OR] 3.63, adjusted OR [aOR] 4.72, $P=0.010$), any ROSC (56.4% vs. 32.4%, OR 2.70,
70 aOR 3.30, $P=0.033$), and survival to admission (33.3% vs. 8.1%, OR 5.67, aOR 6.74, $P=0.010$) than
71 the AV-compressed group. The 10th-minute EtCO₂ levels (16.0 vs. 14.0 mmHg), active withdrawal
72 post-resuscitation (7.7% vs. 5.4%), and survival to discharge (5.1% vs. 0%) revealed no significant
73 intergroup differences. No patient was discharged with favorable neurological outcomes. An
74 uncompressed AV remained an essential factor for sustained ROSC across all predefined subgroups.

75

76 **Conclusions**

77 Uncompressed AV during CPR increases the chances of ROSC and survival to admission among
78 patients experiencing OHCA. However, its potential impact on long-term survival and neurological
79 outcomes remains unclear.

80

81 **Clinical Trial Registration**

82 This trial was registered at ClinicalTrials.gov, identifier NCT05932784.

83 URL: <https://clinicaltrials.gov/study/NCT05932784>.

84

85 **Keywords:** cardiopulmonary resuscitation; chest compression; aortic valve; transesophageal

86 echocardiography; out-of-hospital cardiac arrest

87

88 **Clinical Perspective**

89 **1) What is new?**

90 • When performing cardiopulmonary resuscitation according to the current guideline-recommended site,
91 chest compressions may lead to accidental compression of the aortic valve (AV), which obstructs
92 blood flow and worsens prognosis for patients experiencing out-of-hospital cardiac arrest.

93 • We have used resuscitative transesophageal echocardiography to elucidate the impact of compressed
94 vs. uncompressed AV on outcomes of these patients, a hitherto unexplored aspect.

95 • Primary outcome was sustained return of spontaneous circulation (ROSC) and secondary outcomes
96 included end-tidal carbon dioxide level at the 10th-minute post-emergency department arrival, any
97 ROSC, survival to admission and discharge, active withdrawal post-resuscitation, and favorable
98 neurological outcomes at discharge.

99

100 **2) What are the clinical implications?**

- 101 • The AV-uncompressed group had a better chance of sustained ROSC, any ROSC, and survival to
102 admission than the AV-compressed group.
- 103 • However, its potential impact on long-term survival and neurological outcomes remains unclear; if
104 resuscitative transesophageal echocardiography can be successfully used or if more convenient and
105 lightweight tools can detect AV compression, both in prehospital situations, stronger evidence may
106 be obtained.
- 107 • Current cardiopulmonary resuscitation guidelines may need to be revised for a more individualized
108 approach, which can help rescuers avoid accidental AV compression and improve patient outcomes
109 and prognosis.

110

111 **Non-standard Abbreviations and Acronyms**

112 AMC: Area of Maximal Compression

113 AoR: Aortic root

114 AV: Aortic valve

115 CCI: Charlson Comorbidity Index

116 ECPR: Extracorporeal cardiopulmonary resuscitation

117 EtCO₂: End-tidal Carbon Dioxide

118 FEMH: Far Eastern Memorial Hospital

- 119 GEE: Generalized estimating equations
- 120 INL: Inter-nipple line
- 121 mRS: Modified Rankin Scale
- 122 N/A: Not Applicable.
- 123 OHCA: Out-of-Hospital Cardiac Arrest
- 124 REBOA: Resuscitative Endovascular Balloon Occlusion of the Aorta
- 125 ROSC: Return of Spontaneous Circulation
- 126 TEE: Transesophageal Echocardiography
- 127 TTM: Target Temperature Management
- 128

129 **Introduction**

130 Out-of-hospital cardiac arrest (OHCA) is a significant global health issue.^{1,2} Despite
131 improvements in emergency medical systems and resuscitation science, the increased annual survival
132 rate is inadequate.³ More than 90% of patients experiencing OHCA did not survive to discharge,⁴
133 indicating room for potential improvement in cardiac arrest management.

134 Chest compression is the most crucial component of post-cardiac arrest resuscitation. “Push
135 hard, push fast, allow the chest to fully recoil, and avoid interruptions” is the optimal chest
136 compression technique.^{5,6} Compression rate and depth and location are essential considerations.
137 Current cardio-pulmonary resuscitation (CPR) guidelines recommend that chest compressions should
138 be applied on “the center of the chest” or “the bottom half of the sternum” for all patients with
139 cardiac arrest.^{5,6} However, because of inherent differences in body size or the presence of chronic
140 heart-lung diseases, the anatomical location of the heart varies across individuals.^{7,8} Therefore,
141 applying compressions at a particular site for all patients with cardiac arrest may be arbitrary. Recent
142 observational research suggests that if chest compressions are applied at the aforementioned
143 recommended region, more than 50% of patients experiencing OHCA may receive compressions on
144 the left ventricular outflow tract (LVOT) or aortic root (AoR), which are located near the aortic valve
145 (AV).⁹

146 Theoretically, compressions on the LVOT or AoR during CPR could result in AV deformity,
147 which may obstruct blood flow from the heart and severely limit coronary, cerebral, and even

148 systemic perfusion, thereby worsening the prognosis. Animal trials have confirmed this hypothesis
149 and demonstrated that compressions on the LVOT would significantly diminish the probability of
150 survival.¹⁰ An observational study of patients experiencing OHCA who received extracorporeal CPR
151 (ECPR) found a 0% (0/11 cases) chance of return of electromechanical cardiac activity after
152 extracorporeal membrane oxygenation (ECMO) flow was initiated when chest compressions were
153 applied to the LVOT during CPR.¹¹ However, no human studies have determined whether chest
154 compression-induced AV deformity can lead to adverse clinical outcomes and its effect on return of
155 spontaneous circulation (ROSC), survival, or neurological outcomes to date. Resuscitative
156 transesophageal echocardiography (TEE) provides real-time cardiac images during ongoing chest
157 compressions and is the tool of choice for determining AV compression.¹²

158 In this study, we aimed to use TEE to comprehensively analyze the effect of AV compression in
159 patients experiencing OHCA. We hypothesized that regardless of LVOT or AoR compression, chest
160 compressions on the AV deform it and may lead to worsening ROSC rate for these patients.

161

162 **Methods**

163 *Data Availability Statement*

164 The datasets generated and/or analyzed during the current study are available from the corresponding
165 author on reasonable request.

166

167 ***Study design and setting***

168 This prospective single-center observational cohort study included all patients experiencing
169 OHCA who underwent resuscitative TEE in the emergency department (ED) of the Far Eastern
170 Memorial Hospital (FEMH). The FEMH is the largest tertiary medical center in New Taipei City,
171 Taiwan, with 1415 beds and approximately 10 000 monthly ED visits, 25 of which are non-traumatic
172 OHCA^s.¹³ The ED has been equipped with TEE for several years, and it is standard practice to
173 perform resuscitative TEE, provided that a physician with expertise in resuscitative TEE was on duty
174 and staffing resources permitted. In addition to being a cardiac arrest center, the FEMH offers 24-h
175 on-call services of ECMO with formal ECPR protocol, resuscitative endovascular balloon occlusion
176 of the aorta (REBOA), emergency coronary interventions, life-saving surgery, and target temperature
177 management (TTM).

178

179 ***Selection of participants***

180 All patients aged ≥ 20 years who presented at the ED with non-traumatic OHCA and underwent
181 resuscitative TEE were enrolled in this study. The exclusion criteria is as follows: (1) early ROSC
182 before obtaining TEE image; (2) REBOA before ROSC (REBOA would significantly increase the
183 hemodynamics during CPR and possibly change the likelihood of ROSC^{14,15}); (3) initiation of
184 ECMO flow before ROSC; (4) compression site unidentified on TEE; (5) poor quality TEE image;
185 and (6) missing TEE image.

186

187 ***Ethics approval and consent to participate***

188 This study was approved by the Institutional Review Board (IRB) of the FEMH study (IRB
189 number: 109070-F). The Declaration of Helsinki mandates informed consent for any study involving
190 human participants.¹⁶ However, obtaining informed consent from unconscious patients is
191 challenging when conducting cardiac arrest studies.¹⁷ To facilitate vital advancements in
192 resuscitation science, the United States Food and Drug Administration has provided specific
193 provisions for waiving informed consent in emergency medical research.¹⁸ Accordingly, the IRB
194 approved this study including a waiver that was applicable regardless of the patients' survival or
195 neurological recovery. Furthermore, the observational nature of this study and the routine use of
196 resuscitative TEE at the FEMH's ED supported this waiver.

197

198 ***Protocol of the pre- and in-hospital resuscitation***

199 Upon identifying an emergency call as an OHCA event, the dispatcher would activate the code
200 and notify the hospital to prepare in advance. Prior to ED arrival, as per the protocol of the New
201 Taipei City Fire Department, at least 2 emergency medical technicians (EMTs) provided basic or
202 advanced life support to all patients experiencing OHCA. This protocol included mechanical chest
203 compression (LUCAS® 2, Stryker Medical, Kalamazoo, MI) at "the center of the chest" with a rate
204 of 100 compressions/min and a depth of 5 cm, advanced airway management (endotracheal

205 intubation or Supralaryngeal Airway), defibrillation, and administration of resuscitative medications,
206 such as epinephrine, if the intra-venous or intra-osteal routes were available. After the initial cycle of
207 CPR, if there was no prior “Do Not Resuscitate” order, the patient was transported to the hospital for
208 further resuscitation.

209 Once the patient arrived at the ED, the rescue team assumed the resuscitation efforts. The
210 in-hospital resuscitation was administered in accordance with the American Heart Association’s CPR
211 guidelines.⁶ The patient initially received chest compressions from the same machine brought by the
212 EMTs, with the same rate and depth and at the same site. Additionally, the patient was intubated and
213 provided mechanical ventilation with volume assist-control mode (tidal volume: 6–8 ml/kg, peak
214 flow: 50 L/min, maximum peak pressure: 120 cm H₂O, respiratory rate: 10/min, inspired fraction of
215 oxygen: 100%, and positive end-expiratory pressure: 5 mmHg). After establishing an endotracheal
216 airway, if no contraindications existed and sufficient manpower was available, TEE (PET-512MC
217 transducer, Toshiba, Japan) was performed to identify the area of maximal compression (AMC) and
218 to investigate potential causes of arrest. The TEE provider did not lead the code and consequently,
219 could not interrupt resuscitation; however, the team leader was informed of the TEE findings to
220 guide the treatment goal. If the AMC appeared positioned on the AV, the team leader decided on
221 whether to relocate the compression site, depending on the situation. In addition, the ECMO or
222 REBOA team were notified, if the associated criteria were met. After ROSC, the patient was
223 transferred to the intensive care unit for post-arrest care.

224

225 ***Definition of AV compression and protocol of TEE scanning***

226 In this study, AV compression or compressed AV was defined as AV deformity caused by chest
227 compressions detected via both long- and short-axis TEE at the mid-esophageal level using our
228 team's previously published algorithm.¹⁹ All physicians and residents performing resuscitative TEE
229 were required to attend a full-day workshop and clear the subsequent examination. Resuscitative
230 TEE was applied in accordance with our team's previously published protocol.²⁰ Two authors, J-T
231 Sun and S-E Chu, both resuscitation and ultrasound instructors certified by Taiwan Society of
232 Emergency Medicine and Taiwan Society of Ultrasound in Medicine, with over fifty times of
233 experience in resuscitative TEE, reviewed all TEE images and videos of the entire CPR process for
234 each enrolled patient post-resuscitation to determine AV compression; these results were used in this
235 study's analysis and served as feedback for the TEE operators.

236

237 ***Study outcomes***

238 The primary outcome was sustained ROSC, defined as ROSC >20 min. The secondary
239 outcomes included end-tidal carbon dioxide (EtCO₂) pressure during in-hospital resuscitation (with
240 the level at the 10th minute following ED arrival as a representative measure), any ROSC (>1 min),
241 survival to admission, active withdrawal of life-sustaining measures post-resuscitation (in response
242 to confirmed unsolvable neurological prognosis), survival to discharge, and discharge with favorable

243 neurological outcomes (defined as Modified Rankin Scale 0–2).

244

245 *Data collection and variable definitions*

246 The clinical characteristics of the enrolled patients were collected in accordance with the current
247 Utstein format for OHCA,²¹ including age, gender, weight, height, body mass index, chronic disease,
248 Charlson Comorbidity Index (CCI)²², arrest location, witnessed or not, whether bystander CPR was
249 performed, initial rhythm, prehospital management by the EMTs, in-hospital resuscitation, possible
250 etiologies of arrest, and clinical outcomes. In addition, the critical time points of the resuscitation,
251 such as the EMT response time (time from emergency call to EMT arrival on-scene), the total
252 prehospital time (time from call to ED arrival), the time from ED arrival to initial TEE imaging, and
253 the total CPR time (total prehospital time plus total in-hospital CPR time) were recorded. The EtCO₂
254 data for each minute of the CPR was downloaded and recorded from the physiologic monitor. For
255 review and analysis of the TEE findings, all TEE images and videos of each patient's entire CPR
256 process were captured and stored.

257

258 *Sample size determination*

259 In Catena et al.'s study, the probability of return to electromechanical cardiac activity after the
260 initiation of ECMO was 0% and 87.5% in the LVOT-compressed (0/11 cases) and uncompressed (7/8
261 cases) groups, respectively.¹¹ An animal study including 26 swine revealed that the rate of ROSC

262 was 0% (0/13 cases) and 69.2% (9/13 cases) in the LVOT-compressed and the left-ventricle (LV)
263 compressed groups, respectively.¹⁰ Nonetheless, an ROSC rate of 87.5% or 69.2% is not achievable
264 in actual clinical practice, and the outcomes of LV compression cannot fully represent the
265 AV-uncompressed group. Therefore, in this study, for the AV-uncompressed group, the baseline
266 sustained-ROSC rate (25.6%) of patients experiencing OHCA in Taipei was used.³ For the
267 AV-compressed group, the sustained ROSC rate was hypothesized to be proximate to 0%. In addition,
268 previous studies demonstrated that approximately 50% of patients undergoing CPR would
269 experience AV compression.⁷⁻⁹ Therefore, the enrollment ratio between these 2 groups was
270 postulated to be 1:1. Finally, 34 patients/group were estimated to provide the trial with 90% power to
271 detect the difference in sustained ROSC rate using an uncorrected 2-sided chi-square test at a
272 significance level of 0.05. To compensate for missing values or unexpected events, the number of
273 patients was increased by 10%, to a total of 37 in each arm. The outcomes of patients whose AV was
274 compressed during CPR and those whose AV was uncompressed were compared.

275

276 ***Data analysis***

277 In this study, the Shapiro–Wilk test was used to assess the existence of a normal distribution for
278 all continuous data. Data with a normal distribution were recorded as the mean with standard
279 deviation and analyzed with 2-tailed T-tests. Data without a normal distribution were presented as the
280 median with interquartile range and analyzed with a 2-sided Mann–Whitney U test. Numeric

281 variables, such as CCI and epinephrine administration times, were presented as median with
282 interquartile range and examined using the 2-sided Mann–Whitney U test. Categorical variables were
283 expressed as frequencies with corresponding percentages and assessed using chi-square tests. The
284 odds ratio (OR) and 95% CIs of the study’s outcomes between the 2 groups were calculated using
285 univariate logistic regression and adjusted for the associated confounders using multivariate logistic
286 regression. The confounders included variables that have been confirmed to have a significant
287 association with our study outcomes, as reported in previous studies, such as sex,^{23,24} CCI,²⁵⁻²⁷
288 witnessed arrest,⁴ bystander CPR,⁴ initial shockable rhythm,^{28,29} total prehospital time.^{30,31} Post-hoc
289 subgroup analyses were conducted using multivariate logistic regression in pre-defined groups,
290 including initial shockable rhythm, witnessed collapse, bystander CPR, cardiogenic arrest, patients’
291 CCI, age, total prehospital time, and EMT response time. All subgroup models were adjusted for sex,
292 CCI, witnessed arrest, bystander CPR, initial shockable rhythm, and total prehospital time, except for
293 the variables themselves. Some variables had zero cell counts; therefore, the first regression method
294 was utilized in the model. The model’s goodness-of-fit was assessed using the Hosmer–Lemeshow
295 test. To further analyze the EtCO₂ differences between the 2 groups, additional generalized
296 estimating equations (GEE) models were employed to examine the differences across cumulative
297 time periods. In this study, the limited missing data were addressed by eliminating rows or columns
298 with absent values, thereby preserving the overall integrity of our dataset. All statistical analyses
299 were conducted using the IBM® SPSS® Statistics version 26.0. A 2-tailed *P*-value of <0.05 was

300 determined to be statistically significant.

301

302 *Independent Data Access and Analysis*

303 This study was conducted at Far Eastern Memorial Hospital, with data collection handled onsite.

304 The task of data access and analysis was entrusted to the independent Statistical Consulting Unit at

305 National Taiwan University Hospital. Importantly, these institutions operate separately, with no

306 organizational affiliation, ensuring the absence of conflicts of interest. Data analysis was conducted

307 in a strictly independent manner, with analysts blind to the personnel at Far Eastern Memorial

308 Hospital. This autonomy in data processing fortifies the objectivity of our results, enhancing both

309 data validity and participant safety in the trial.

310

311 **Results**

312 From October 2020 to January 2023, 104 patients experiencing OHCA underwent ED

313 resuscitative TEE. Twenty-eight patients did not meet the inclusion criteria and were excluded; 8

314 patients achieved ROSC prior to obtaining TEE images, 1 was diagnosed with a ruptured aortic

315 aneurysm via bedside ultrasound and underwent REBOA, 4 met the ECPR criteria and were

316 resuscitated with ECMO before ROSC, 3 had type-A aortic dissection-induced cardiac tamponade

317 diagnosed via TEE making it difficult to identify the AMC, 4 had poor TEE images, and 8 TEE

318 images were missing, hindering the program directors' review of the videos to confirm the AMC.

319 The trial was temporarily suspended in May and June of 2020 and in May and June of 2021 because
320 of the coronavirus disease 2019 pandemic. The final trial cohort comprised 39 and 37 patients in the
321 AV-uncompressed and compressed groups, respectively (**Figure 1**). Furthermore, during the
322 pre-analysis stage, missing prehospital time (due to an EMT recording error) for 1 patient and
323 inconsistencies in the EtCO₂ data for 3 other patients were identified. These four instances of data
324 were accordingly handled as missing data.

325 The enrolled patients had a mean age of 65 years, and most were males (67.1%). Approximately
326 17.1% of patients experienced cardiac arrest in public settings and 31.6% of these arrests were
327 witnessed. Nearly 50% of patients received bystander's CPR. Approximately, 19.7% of patients
328 initially presented with a shockable rhythm and were defibrillated on-scene. Before undergoing TEE,
329 both groups of patients had already received approximately 30 min of CPR. No statistically
330 significant intergroup differences were observed in terms of patient demographics, body mass index,
331 underlying comorbidities, locations or causes of cardiac arrest, or pre- and in-hospital treatments
332 (**Table 1**).

333 Among the 76 enrolled patients, 34 (44.7%) achieved ROSC, with 30 (39.5%) maintaining
334 sustained ROSC. Additionally, 16 (21.1%) patients survived until hospital admission, 5 (6.6%) had
335 life-sustaining measures withdrawn during hospitalization for their irreversible neurological
336 prognosis, and 2 (2.6%) survived until discharge. However, none exhibited a favorable neurological
337 recovery, irrespective of AV compression. The AV-uncompressed group had a significantly higher

338 sustained ROSC rate (53.8% vs. 24.3%, unadjusted OR 3.63, $P=0.010$), as well as in any ROSC
339 ($P=0.038$), and survival to admission ($P=0.012$) than the AV-compressed group (**Table 2**). The
340 proportion of active withdrawal after resuscitation was similar between both groups (unadjusted OR
341 1.46, $P=0.689$). Compared with 2 patients in the AV-uncompressed group, no patient survived to
342 discharge in the AV-compressed group; however, this difference was not statistically significant. For
343 the potential confounders associated with study's outcomes, additional multivariate logistic
344 regression analyses were performed (**Table 2**). An uncompressed AV remains a statistically
345 significant factor in achieving sustained ROSC ($P=0.009$), including in any ROSC ($P=0.033$), and
346 survival to hospital admission ($P=0.010$). **Figure 2** presents the subgroup analysis, revealing that in
347 all predefined subgroups, an uncompressed AV is an important factor for sustained ROSC.

348 In the assessment of EtCO₂, no statistically significant divergence was observed in the levels
349 recorded at the 10th minute following ED arrival between both groups (**Table 2**). Additionally,
350 throughout the in-hospital resuscitation phase, despite notable differences in the patterns of EtCO₂
351 levels between both groups (**Figure 3**), where the AV-uncompressed group tended to display higher
352 levels in the initial 10 min, and the AV-compressed group displayed a higher tendency between the
353 15th and 25th min, no statistically significant differences were found in the minute-to-minute EtCO₂
354 levels (**Table S1**). A subsequent post-hoc GEE model analysis indicated that no marked difference in
355 EtCO₂ levels between both groups emerged within the first 10 min, irrespective of the chosen cut-off
356 point (**Table S2**).

357

358

359 **Discussion**

360 In our study, we discovered that the chest compression site is essential in determining the
361 prognosis of patients experiencing OHCA. Our study results indicated that applying chest
362 compressions directly on the AV considerably reduced the chances of achieving ROSC, sustained
363 ROSC, and survival to admission. Thus, our study has underscored the importance of avoiding direct
364 AV compression during CPR for patients experiencing OHCA for an improved prognosis.

365 To the best of our knowledge, this is the first prospective study to investigate the relationship
366 between chest compression site and outcomes such as ROSC and survival in patients experiencing
367 OHCA. Our findings might be attributed to the potential adverse impact of chest compressions on
368 AV movement that reduces blood flow from the LV to the AoR. This hypothesis is credible since it
369 directly influences the perfusion of the coronary arteries, which originate from the AoR and perfuse
370 the myocardium. In Anderson et al.'s animal study, the AV-compressed group had considerably lower
371 systolic and diastolic aortic pressures during resuscitation, and a significant drop in coronary
372 perfusion pressure during the advanced life support phase.¹⁰ More in-depth human studies on the
373 CPR hemodynamics may be necessary in the future to further establish the connection between
374 compression site and patient prognosis.

375 This study's findings revealed that the ratio of compressed to uncompressed AV is proximate to

376 1:1, consistent with previously reported findings.^{7-9,32} A recent observational study reported that if
377 chest compressions were performed in the guideline-recommended position, 53% of patients
378 experiencing OHCA may have AV compression (9/17 cases).⁹ Hwang et al. reported an incidence of
379 79% of AV compression in patients experiencing OHCA (27/34 cases).³² These evidences suggest
380 that when performing CPR according to current guidelines, majority of the resuscitation attempts
381 may be ineffective or potentially harmful because of direct compression of the patient's AV. These
382 guidelines may need to be revised for a more individualized approach, which may help rescuers to
383 avoid accidental AV compression.

384 To identify the optimal compression site during CPR, several imaging studies demonstrated that
385 the ventricles and the AV were mainly positioned beneath “the lower third of the sternum,” and “the
386 center of the chest,” respectively.^{7,8} Subsequently, Cha et al.'s study to evaluate the effects of
387 different compression sites revealed that compressions at the “lower end of the sternum” resulted in
388 higher EtCO₂ than compressions at the standard “center of the chest.”³³ However, Qvigstad et al.'s
389 study did not reach a similar conclusion. No significant difference in EtCO₂ was observed regardless
390 of whether the compression site was at the midpoint of the inter-nipple line (INL), 2 cm below the
391 INL, 2 cm below and to the left of the INL, or 2 mc below and to the right of the INL.³⁴ Therefore,
392 the usefulness of revising the standard compression site to the “lower third of sternum” remains
393 uncertain. The significant differences between the aforementioned studies have 2 possible
394 explanations.

395 First, EtCO₂ level may not be a suitable hemodynamic indicator for OHCA research. Among
396 patients experiencing OHCA, EtCO₂ levels might vary widely, which could be due to the quality of
397 CPR and the etiologies or duration of cardiac arrest,^{35,36} varying lung volumes and pulmonary
398 compliance,^{37,38} or even measuring artifacts on the physiological monitor.^{39,40} In our study, similar to
399 the findings of Qvigstad et al., no significant intergroup difference in EtCO₂ was observed
400 throughout the in-hospital CPR process. This lack of distinction could be attributed to the
401 aforementioned confounding variables and the fact that both groups had already undergone
402 approximately 30 min of resuscitation prior to ED arrival. Insufficient sample size, which may have
403 prevented the generation of statistically significant differences, is another possible factor. Moreover,
404 the varying distribution of patients achieving ROSC over time within these groups could contribute
405 to the challenges in using EtCO₂ as a reliable indicator of CPR quality (**Figure S1**). Thus, EtCO₂
406 might serve as a supplementary assessment rather than as a primary indicator when determining the
407 precise effectiveness of various compression sites in OHCA research. Therefore, in our study, we
408 used a more stable and reliable indicator, “sustained ROSC,” as a primary outcome and included an
409 adequate sample size to examine the intergroup differences. Further research is required to evaluate
410 the effect of various compression sites on survival and neurological outcomes.

411 Second, the effectiveness of preventing AV compression cannot be guaranteed by mere reliance
412 on body landmarks. Variations in individual body shape and medical history could result in
413 differences in anatomical cardiac positions, leading to diverse hemodynamic responses during CPR,

414 despite chest compressions being applied at similar body landmarks. Particularly, in Qvigstad et al.'s
415 study, the difference in chest compression sites were merely 2 cm apart.³⁴ This minor discrepancy in
416 distance may confound the generation of a meaningful difference in hemodynamics, let alone
417 completely avoid AV compression. In this study, TEE was used to accurately determine the
418 occurrence of AV compression during CPR. In the future, TEE augmented by improved technologies
419 may help rescuers precisely locate the AV to ensure more efficient chest compressions.

420 Within the AV-compressed group in this study, some rescuers adjusted the chest compression
421 site based on patient conditions or available resources in an attempt to decompress the AV. This led to
422 crossover situations; however, as this was observational research that did not interfere with clinical
423 decisions, and in line with the “intention to treat” principle, patients whose chest compression site
424 was adjusted were not excluded. Therefore, an additional analysis was conducted on the
425 AV-compressed group to account for this deviation (**Table S3**). Out of 37 patients, the AV became
426 uncompressed in 14 patients following TEE-guided compression site adjustment, whereas in 23
427 patients, the AV remained persistently compressed regardless of any adjustment attempts. Notably,
428 regardless of whether the AV was ultimately uncompressed, we did not observe a noticeable
429 difference in outcomes. Furthermore, the prognosis for the AV-compressed group remained
430 significantly worse compared with that for the AV-uncompressed group, despite these adjustments in
431 compression site. This might be attributed to our cohort undergoing prolonged CPR; on an average, it
432 involved approximately 30 min of prehospital resuscitation and an additional 11 min post-ED arrival

433 resuscitation to successfully uncompress the AV. Under such extended resuscitation scenarios, any
434 intervention might be less effective, thus explaining the observed results. Further research should
435 evaluate the clinical impact of early TEE-guided compression site adjustment, even in prehospital
436 settings or for patients with in-hospital cardiac arrest.

437 This study, primarily focused on patients experiencing non-traumatic OHCA, has underscored
438 the detrimental effects of AV compression on ROSC and overall survival outcomes. However,
439 generalization of these findings to traumatic OHCA cases is not recommended. Notably, a study
440 conducted on a traumatic OHCA swine model revealed that chest compressions near the AV (or
441 LVOT) during resuscitation significantly diminished coronary perfusion and arterial pressures and
442 EtCO₂ levels, thereby drastically reducing the survival rate.⁴¹ Despite these findings, clinical data
443 affirming the adverse effects of AV compression in patients with traumatic cardiac arrest is lacking,
444 highlighting the need for further research in this domain. In addition, the potential for similar effects
445 in patients experiencing in-hospital cardiac arrest and the potential benefits of prehospital
446 TEE-guided chest compressions remain largely unexplored. Therefore, more extensive research
447 efforts must focus on these areas in the future.

448

449 *Limitations*

450 This study has some limitations. First, performing TEE outside the hospital remains a challenge;
451 hence, it is unclear if the initial TEE findings, whether AV was being compressed, were consistent

452 with those during prehospital resuscitation. However, since we did not change the compression
453 device, position, or depth post-ED arrival, it is probable that the AMC observed initially on TEE at
454 the ED approximates the AMC during prehospital resuscitation. In the future, if TEE can be
455 successfully used or if more convenient and lightweight tools can detect AV compression, both in
456 prehospital situations, stronger evidence may be obtained. Second, as our study design excluded
457 patients who achieved early ROSC prior to TEE and those who were resuscitated with ECMO or
458 REBOA, our cohort primarily comprised patients who had already undergone prolonged CPR. This
459 specific selection criteria might have inadvertently led to an underrepresentation of long-term
460 outcomes, such as survival rates until hospital discharge and the associated neurological outcomes at
461 discharge. A more extensive study incorporating prehospital TEE might potentially to address this
462 limitation. Third, constrained by staffing resources, approximately only 23% of patients experiencing
463 OHCA arriving at the ED during the study period were able to undergo resuscitative TEE. Despite
464 concerns of potential selection bias, this rate of resuscitative TEE aligns with those previously
465 reported,^{9,42} indicating a common challenge in clinical settings. Nevertheless, this limitation
466 highlights the need for further extensive studies to minimize selection bias and provide a more
467 comprehensive understanding of the issue.

468

469 ***Conclusion***

470 In patients experiencing OHCA, CPR performed without compressing the AV considerably

471 increases the probability of achieving ROSC, sustaining ROSC, and survival to hospital admission.

472 However, the beneficial impact of an uncompressed AV on long-term survival and neurological

473 outcomes requires further exploration and research.

474

475 **Acknowledgements**

476 We thank the nursing team from the Departments of Emergency Medicine Critical Care at Far
477 Eastern Memorial Hospital for their outstanding resuscitation efforts and post-ROSC care given to
478 patients experiencing OHCA. Furthermore, we express our gratitude to the staff at the National
479 Taiwan University Hospital Statistical Consulting Unit, whose efforts considerably advanced our
480 work.

481

482 **Sources of Funding**

483 This work was supported by the Far Eastern Memorial Hospital (Grant Number: PI20200001). The
484 funders had no role in study design, data collection and analysis, decision to publish, or preparation
485 of the manuscript.

486

487 **Disclosures**

488 *Conflict of interests:* None.

489 *Statistical Analysis:* Formal analysis was approved by the staff, Dr. Chin-Ho Chang, of the National
490 Taiwan University Hospital Statistical Consulting Unit.

491

492 **Supplemental Material**

493 Tables S1–S3

494 Figure S1

495 **References**

- 496 1. Ong ME, Shin SD, De Souza NN, Tanaka H, Nishiuchi T, Song KJ, Ko PC, Leong BS,
497 Khunkhlai N, Naroo GY, et al. Outcomes for out-of-hospital cardiac arrests across 7 countries
498 in Asia: the Pan Asian Resuscitation Outcomes Study (PAROS). *Resuscitation*. 2015;96:100–
499 108. doi: [10.1016/j.resuscitation.2015.07.026](https://doi.org/10.1016/j.resuscitation.2015.07.026)
- 500 2. Aufderheide TP, Nolan JP, Jacobs IG, van Belle G, Bobrow BJ, Marshall J, Finn J, Becker
501 LB, Bottiger B, Cameron P, et al. Global health and emergency care: a resuscitation research
502 agenda—Part 1. *Academic Emergency Medicine*. 2013;20:1289–1296. doi:
503 <https://doi.org/10.1111/acem.12270>
- 504 3. Lin HY, Chien YC, Lee BC, Wu YL, Liu YP, Wang TL, Ko PCI, Chong KM, Wang HC,
505 Huang EPC, et al. Outcomes of out-of-hospital cardiac arrests after a decade of system-wide
506 initiatives optimising community chain of survival in Taipei city. *Resuscitation*.
507 2022;172:149–158. doi: <https://doi.org/10.1016/j.resuscitation.2021.12.027>
- 508 4. Yan S, Gan Y, Jiang N, Wang R, Chen Y, Luo Z, Zong Q, Chen S, Lv C. The global survival
509 rate among adult out-of-hospital cardiac arrest patients who received cardiopulmonary
510 resuscitation: a systematic review and meta-analysis. *Critical Care*. 2020;24:61. doi:
511 [10.1186/s13054-020-2773-2](https://doi.org/10.1186/s13054-020-2773-2)
- 512 5. Soar J, Böttiger BW, Carli P, Couper K, Deakin CD, Djävrv T, Lott C, Olasveengen T, Paal P,
513 Pellis T, et al. European Resuscitation Council Guidelines 2021: adult advanced life support.

- 514 *Resuscitation*. 2021;161:115–151. doi: 10.1016/j.resuscitation.2021.02.010
- 515 6. Panchal AR, Bartos JA, Cabañas JG, Donnino MW, Drennan IR, Hirsch KG, Kudenchuk PJ,
516 Kurz MC, Lavonas EJ, Morley PT, et al. Part 3: Adult Basic and Advanced Life Support:
517 2020 American Heart Association Guidelines for Cardiopulmonary Resuscitation and
518 Emergency Cardiovascular Care. *Circulation*. 2020;142:S366–S468. doi:
519 doi:10.1161/CIR.0000000000000916
- 520 7. Nestaas S, Stensæth KH, Rosseland V, Kramer-Johansen J. Radiological assessment of chest
521 compression point and achievable compression depth in cardiac patients. *Scand J Trauma*
522 *Resusc Emerg Med*. 2016;24:54. doi: 10.1186/s13049-016-0245-0
- 523 8. Shin J, Rhee JE, Kim K. Is the inter-nipple line the correct hand position for effective chest
524 compression in adult cardiopulmonary resuscitation? *Resuscitation*. 2007;75:305–310. doi:
525 10.1016/j.resuscitation.2007.05.003
- 526 9. Teran F, Dean AJ, Centeno C, Panebianco NL, Zeidan AJ, Chan W, Abella BS. Evaluation of
527 out-of-hospital cardiac arrest using transesophageal echocardiography in the emergency
528 department. *Resuscitation*. 2019;137:140–147. doi: 10.1016/j.resuscitation.2019.02.013
- 529 10. Anderson KL, Castaneda MG, Boudreau SM, Sharon DJ, Bebarta VS. Left ventricular
530 compressions improve hemodynamics in a swine model of out-of-hospital cardiac arrest.
531 *Prehosp Emerg Care*. 2017;21:272–280. doi: 10.1080/10903127.2016.1241328
- 532 11. Catena E, Ottolina D, Fossali T, Rech R, Borghi B, Perotti A, Ballone E, Bergomi P, Corona

- 533 A, Castelli A, et al. Association between left ventricular outflow tract opening and successful
534 resuscitation after cardiac arrest. *Resuscitation*. 2019;138:8–14. doi:
535 10.1016/j.resuscitation.2019.02.027
- 536 12. Teran F, Prats MI, Nelson BP, Kessler R, Blaivas M, Peberdy MA, Shillcutt SK, Arntfield RT,
537 Bahner D. Focused transesophageal echocardiography during cardiac arrest resuscitation:
538 JACC Review Topic of the Week. *J Am Coll Cardiol*. 2020;76:745–754. doi:
539 10.1016/j.jacc.2020.05.074
- 540 13. Emergency Medical Services Resuscitation Success Statistics, as provided by the Fire
541 Department of the Ministry of the Interior, Taiwan.
542 <https://www.nfa.gov.tw/cht/index.php?act=download&ids=14489>. 2021.
- 543 14. Jang D-H, Lee DK, Jo YH, Park SM, Oh YT, Im CW. Resuscitative endovascular occlusion
544 of the aorta (REBOA) as a mechanical method for increasing the coronary perfusion pressure
545 in non-traumatic out-of-hospital cardiac arrest patients. *Resuscitation*. 2022;179:277–284. doi:
546 <https://doi.org/10.1016/j.resuscitation.2022.07.020>
- 547 15. Gamberini L, Coniglio C, Lupi C, Tartaglione M, Mazzoli CA, Baldazzi M, Cecchi A, Ferri E,
548 Chiarini V, Semeraro F, et al. Resuscitative endovascular occlusion of the aorta (REBOA) for
549 refractory out of hospital cardiac arrest. An Utstein-based case series. *Resuscitation*.
550 2021;165:161–169. doi: 10.1016/j.resuscitation.2021.05.019
- 551 16. Association WM. World Medical Association Declaration of Helsinki: Ethical principles for

- 552 medical research involving human subjects. *JAMA*. 2013;310:2191–2194. doi:
553 10.1001/jama.2013.281053
- 554 17. Foëx BA. The problem of informed consent in emergency medicine research. *Emergency*
555 *Medicine Journal*. 2001;18:198–204. doi: 10.1136/emj.18.3.198
- 556 18. Biros MH, Fish SS, Lewis RJ. Implementing the Food and Drug Administration's final rule
557 for waiver of informed consent in certain emergency research circumstances. *Acad Emerg*
558 *Med*. 1999;6:1272–1282. doi: 10.1111/j.1553-2712.1999.tb00144.x
- 559 19. Chang CJ, Sun JT, Ma MHM, Chiang WC, Chu SE. Precise identification of area of maximal
560 compression using transesophageal echocardiography during cardiopulmonary resuscitation.
561 *Resuscitation*. 2023;187. doi: 10.1016/j.resuscitation.2023.109804
- 562 20. Chu SE, Chang CJ, Chen HA, Chiu YC, Huang CY, Huang EPC, Hsieh MJ, Chiang WC, Ma
563 MHM, Sun JT. Core Ultrasound in REsuscitation (CURE): a novel protocol for
564 ultrasound-assistant life support via application of both transesophageal and transthoracic
565 ultrasound. *Resuscitation*. 2022;173:1–3.
- 566 21. Perkins GD, Jacobs IG, Nadkarni VM, Berg RA, Bhanji F, Biarent D, Bossaert LL, Brett SJ,
567 Chamberlain D, Caen ARd, et al. Cardiac arrest and cardiopulmonary resuscitation outcome
568 reports: update of the Utstein Resuscitation Registry templates for out-of-hospital cardiac
569 arrest. *Circulation*. 2015;132:1286–1300. doi: doi:10.1161/CIR.000000000000144
- 570 22. Charlson ME, Pompei P, Ales KL, MacKenzie CR. A new method of classifying prognostic

- 571 comorbidity in longitudinal studies: development and validation. *J Chronic Dis*.
572 1987;40:373–383. doi: 10.1016/0021-9681(87)90171-8
- 573 23. Lei H, Hu J, Liu L, Xu D. Sex differences in survival after out-of-hospital cardiac arrest: a
574 meta-analysis. *Critical care (London, England)*. 2020;24:613–613. doi:
575 10.1186/s13054-020-03331-5
- 576 24. Morrison LJ, Schmicker RH, Weisfeldt ML, Bigham BL, Berg RA, Topjian AA, Abramson
577 BL, Atkins DL, Egan D, Sopko G. Effect of gender on outcome of out of hospital cardiac
578 arrest in the Resuscitation Outcomes Consortium. *Resuscitation*. 2016;100:76–81.
- 579 25. Dumas F, Paoli A, Paul M, Savary G, Jaubert P, Chocron R, Varenne O, Mira JP, Charpentier
580 J, Bougouin W, et al. Association between previous health condition and outcome after
581 cardiac arrest. *Resuscitation*. 2021;167:267–273. doi: 10.1016/j.resuscitation.2021.06.017
- 582 26. Oving I, van Dongen LHPI, Deurholt SC, Ramdani A, Beesems SG, Tan HL, Blom MT.
583 Comorbidity and survival in the pre-hospital and in-hospital phase after out-of-hospital
584 cardiac arrest. *Resuscitation*. 2020;153:58–64. doi:
585 <https://doi.org/10.1016/j.resuscitation.2020.05.035>
- 586 27. Hirlekar G, Jonsson M, Karlsson T, Hollenberg J, Albertsson P, Herlitz J. Comorbidity and
587 survival in out-of-hospital cardiac arrest. *Resuscitation*. 2018;133:118–123. doi:
588 <https://doi.org/10.1016/j.resuscitation.2018.10.006>
- 589 28. Andrew E, Nehme Z, Lijovic M, Bernard S, Smith K. Outcomes following out-of-hospital

- 590 cardiac arrest with an initial cardiac rhythm of asystole or pulseless electrical activity in
591 Victoria, Australia. *Resuscitation*. 2014;85:1633–1639. doi:
592 10.1016/j.resuscitation.2014.07.015
- 593 29. Mader TJ, Nathanson BH, Millay S, Coute RA, Clapp M, McNally B. Out-of-hospital cardiac
594 arrest outcomes stratified by rhythm analysis. *Resuscitation*. 2012;83:1358–1362. doi:
595 <https://doi.org/10.1016/j.resuscitation.2012.03.033>
- 596 30. Funada A, Goto Y, Tada H, Teramoto R, Shimojima M, Hayashi K, Kawashiri MA,
597 Yamagishi M. Duration of cardiopulmonary resuscitation in patients without prehospital
598 return of spontaneous circulation after out-of-hospital cardiac arrest: Results from a severity
599 stratification analysis. *Resuscitation*. 2018;124:69–75. doi:
600 10.1016/j.resuscitation.2018.01.008
- 601 31. Reynolds JC, Frisch A, Rittenberger JC, Callaway CW. Duration of resuscitation efforts and
602 functional outcome after out-of-hospital cardiac arrest: when should we change to novel
603 therapies? *Circulation*. 2013;128:2488–2494. doi: 10.1161/circulationaha.113.002408
- 604 32. Hwang SO, Zhao PG, Choi HJ, Park KH, Cha KC, Park SM, Kim SC, Kim H, Lee KH.
605 Compression of the left ventricular outflow tract during cardiopulmonary resuscitation. *Acad*
606 *Emerg Med*. 2009;16:928–933. doi: 10.1111/j.1553-2712.2009.00497.x
- 607 33. Cha KC, Kim HJ, Shin HJ, Kim H, Lee KH, Hwang SO. Hemodynamic Effect of External
608 Chest Compressions at the Lower End of the Sternum in Cardiac Arrest Patients. *The Journal*

- 609 of *Emergency Medicine*. 2013;44:691–697. doi:
- 610 <https://doi.org/10.1016/j.jemermed.2012.09.026>
- 611 34. Qvigstad E, Kramer-Johansen J, Tømte Ø, Skålhegg T, Sørensen Ø, Sunde K, Olasveengen
- 612 TM. Clinical pilot study of different hand positions during manual chest compressions
- 613 monitored with capnography. *Resuscitation*. 2013;84:1203–1207. doi:
- 614 <https://doi.org/10.1016/j.resuscitation.2013.03.010>
- 615 35. Lah K, Križmarić M, Grmec Š. The dynamic pattern of end-tidal carbon dioxide during
- 616 cardiopulmonary resuscitation: difference between asphyxial cardiac arrest and ventricular
- 617 fibrillation/pulseless ventricular tachycardia cardiac arrest. *Critical Care*. 2011;15:R13. doi:
- 618 10.1186/cc9417
- 619 36. Grmec Š, Lah K. Difference in end-tidal carbon dioxide changes during cardiopulmonary
- 620 resuscitation between cardiac arrest due to asphyxia and VF/VT cardiac arrest. *Critical Care*.
- 621 2003;7:P063. doi: 10.1186/cc1952
- 622 37. Lesimple A, Fritz C, Hutin A, Charbonney E, Savary D, Delisle S, Ouellet P, Bronchti G,
- 623 Lidouren F, Piraino T, et al. A novel capnogram analysis to guide ventilation during
- 624 cardiopulmonary resuscitation: clinical and experimental observations. *Critical Care*.
- 625 2022;26:287. doi: 10.1186/s13054-022-04156-0
- 626 38. Grieco DL, L JB, Drouet A, Telias I, Delisle S, Bronchti G, Ricard C, Rigollot M, Badat B,
- 627 Ouellet P, et al. Intrathoracic airway closure impacts CO(2) signal and delivered ventilation

- 628 during cardiopulmonary resuscitation. *Am J Respir Crit Care Med*. 2019;199:728–737. doi:
629 10.1164/rccm.201806-1111OC
- 630 39. Gutiérrez JJ, Sandoval CL, Leturiondo M, Russell JK, Redondo K, Daya MR, Ruiz de Gauna
631 S. Contribution of chest compressions to end-tidal carbon dioxide levels generated during
632 out-of-hospital cardiopulmonary resuscitation. *Resuscitation*. 2022;179:225–232. doi:
633 <https://doi.org/10.1016/j.resuscitation.2022.07.009>
- 634 40. Leturiondo M, Ruiz de Gauna S, Gutiérrez JJ, Alonso D, Corcuera C, Urtusagasti JF,
635 González-Otero DM, Russell JK, Daya MR, Ruiz JM. Chest compressions induce errors in
636 end-tidal carbon dioxide measurement. *Resuscitation*. 2020;153:195–201. doi:
637 10.1016/j.resuscitation.2020.05.029
- 638 41. Anderson KL, Fiala KC, Castaneda MG, Boudreau SM, Araña AA, Bebartha VS. Left
639 ventricular compressions improve return of spontaneous circulation and hemodynamics in a
640 swine model of traumatic cardiopulmonary arrest. *J Trauma Acute Care Surg*. 2018;85:303–
641 310. doi: 10.1097/ta.0000000000001901
- 642 42. Jung WJ, Cha KC, Kim YW, Kim YS, Roh YI, Kim SJ, Kim HS, Hwang SO. Intra-arrest
643 transoesophageal echocardiographic findings and resuscitation outcomes. *Resuscitation*.
644 2020;154:31–37. doi: 10.1016/j.resuscitation.2020.06.035

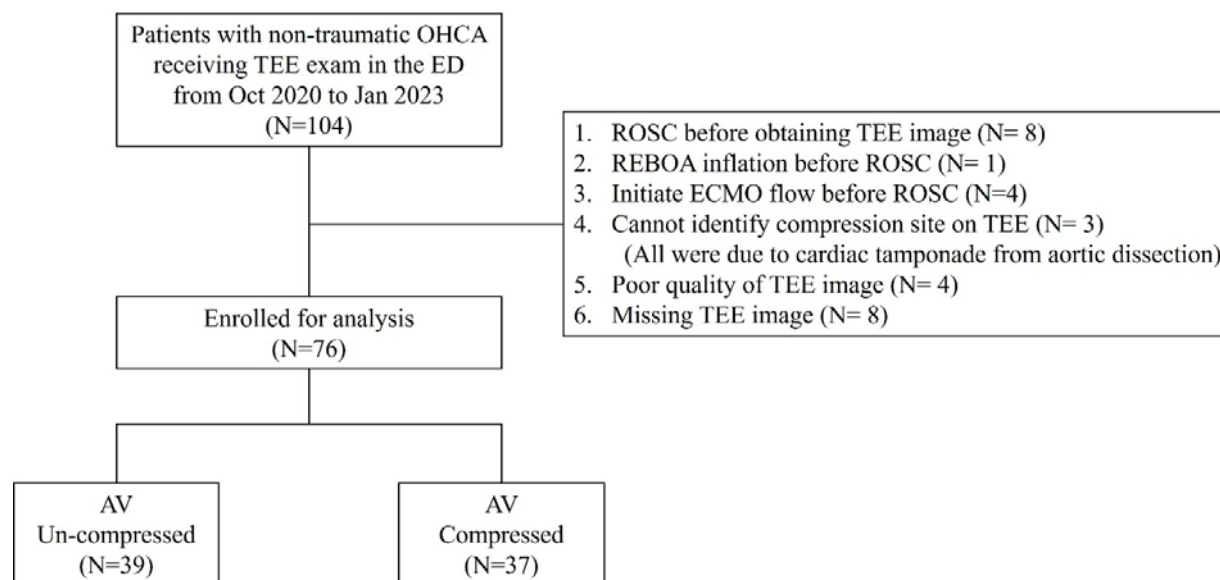
645 **Figures and figure legends**

646

647 **Figure 1.** Flowchart of the study

648

649



650

651

652

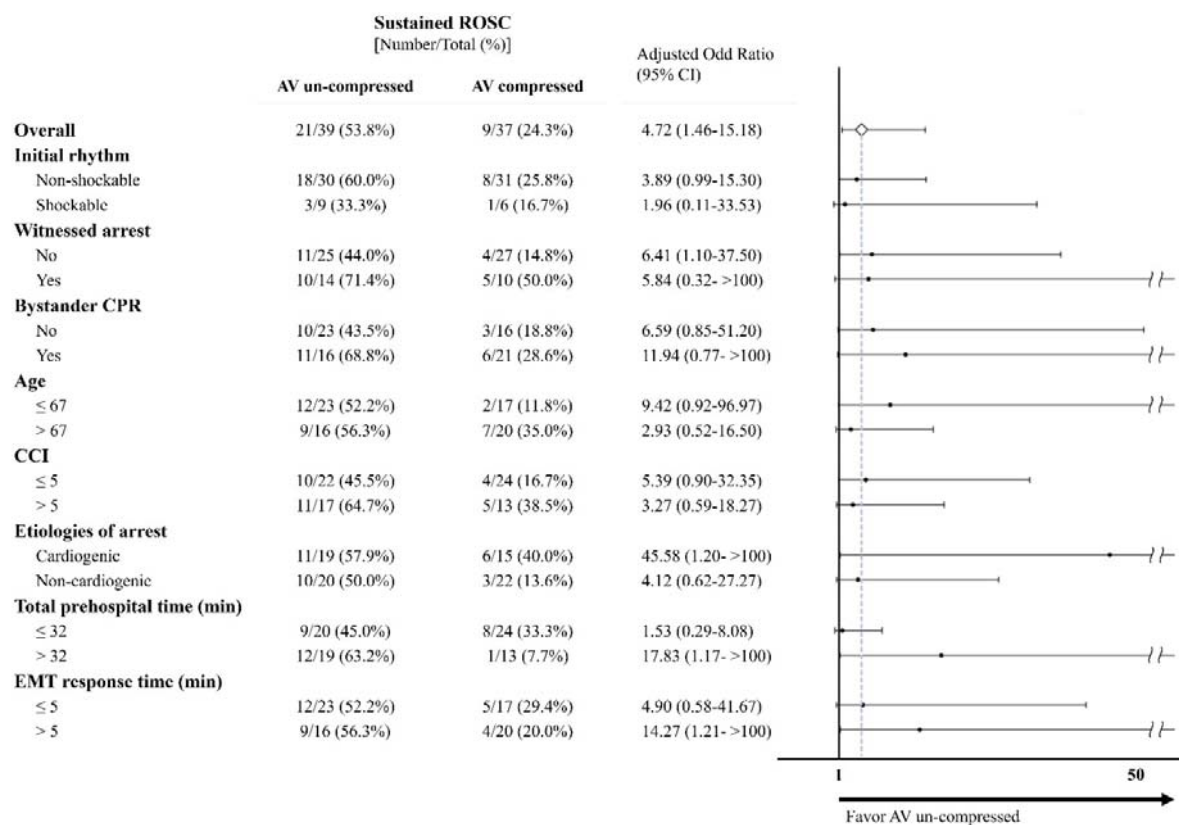
653 OHCA, Out-of-hospital cardiac arrest; TEE, transesophageal echocardiography; ED, emergency

654 department; ROSC, return of spontaneous circulation; ECMO, extracorporeal membrane

655 oxygenation; REBOA, resuscitative endovascular balloon occlusion of the aorta; AV, aortic valve.

656

657 **Figure 2.** Subgroup results for sustained ROSC



658

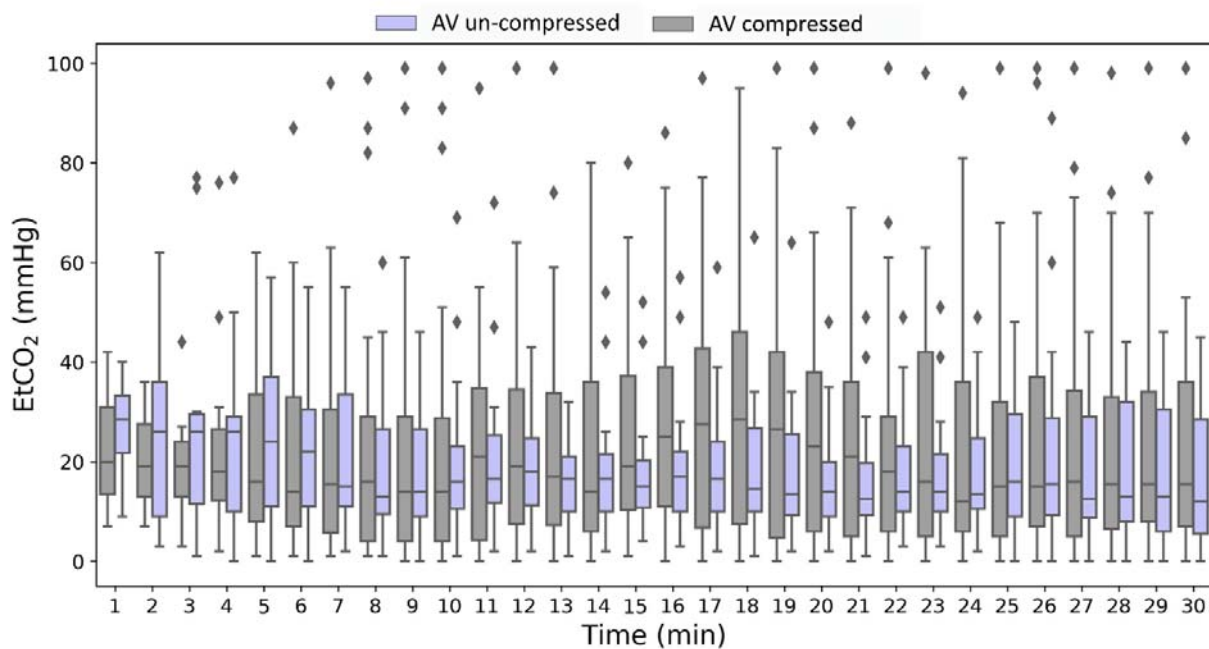
659 In the subgroup analysis model for age, CCI, total pre-hospital time, and EMT response time, the
 660 cut-off values are determined based on the medians of the enrolled population. All models are
 661 adjusted for sex, CCI, witnessed arrest, bystander CPR, initial shockable rhythm, and total
 662 prehospital time, except for the variables themselves. The blue dashed line represents the overall OR
 663 value.

664 ROSC, return of spontaneous circulation; AV, aortic valve; CPR, cardiopulmonary resuscitation;

665 CCI, Charlson Comorbidity Index; EMT, emergency medical technician; OR, odds ratio.

666

667 **Figure 3.** EtCO₂ levels at each minute of resuscitation after ED arrival



668

669 All data points are presented as median and interquartile range.

670 EtCO₂, end-tidal carbon dioxide; ED, emergency department.

671

1 **Table 1.** Baseline characteristics of the study participants

	Total (n=76)	AV un-compressed (n=39)	AV compressed (n=37)	P value
Patients' characteristics				
Age	65.3±14.7	62.2±13.1	68.6±15.8	0.058
Sex (male)	51(67.1%)	27(69.2%)	24(64.9%)	0.686
BMI	24.9±5.9	24.1±6.6	25.6±5.5	0.299
Charlson Comorbidity Index *	4.5(6.8)	5(4)	3(4)	0.263
Chronic disease				
Chronic heart disease	20(26.3%)	13(33.3%)	7(18.9%)	0.154
Chronic lung disease	9(11.8%)	2(5.1%)	7(18.9%)	0.063
Chronic kidney disease	10(13.2%)	5(12.8%)	5(13.5%)	0.929
Chronic liver disease	5(6.6%)	3(7.7%)	2(5.4%)	0.688
Total dependence	6(7.9%)	3(7.7%)	3(8.1%)	0.946
Prehospital resuscitation				
Arrest in public	13(17.1%)	8(20.5%)	5(13.5%)	0.418
Dispatcher identified	39(51.3%)	19(48.7%)	20(54.1%)	0.642
Witnessed arrest	24(31.6%)	14(35.9%)	10(27.0%)	0.406
Bystander CPR	37(48.7%)	16(41.0%)	21(56.8%)	0.170
Initial shockable rhythm	15(19.7%)	9(23.1%)	6(16.2%)	0.453
Airway management				
ETI	13(17.1%)	6(15.4%)	7(18.9%)	0.683
LMA	55(72.4%)	29(74.4%)	26(70.3%)	0.586
Bag-Valve-Mask	5(6.6%)	1(2.6%)	4(10.8%)	0.147
Prehospital Epinephrine	37(48.7%)	16(41.0%)	21(56.8%)	0.170
In-hospital resuscitation				
Total Epinephrine amount during in-hospital CPR (mg) *	10±2	10±4	10±0	0.088
Shockable rhythm on ED arrival	12(15.8%)	7(17.9%)	5(13.5%)	0.596
ECMO after ROSC	4(5.3%)	2(5.1%)	2(5.4%)	0.957
TTM	8(10.5%)	6(15.4%)	2(5.4%)	0.157
Possible Etiology				
Cardiogenic	34(44.7%)	19(48.7%)	15(40.5%)	0.130
Asphyxia or respiratory failure	6(7.9%)	5(12.8%)	1(2.7%)	
Unconclusive or others	36(47.4%)	15(38.5%)	21(56.8%)	
Critical time point				
EMT response time	6.0±2.9	5.6±2.7	6.3±3.2	0.314
Total pre-hospital time	32.3±7.7	32.9±7.7	31.7±7.9	0.535
Time form ED arrival to TEE image	6.9±3.2	6.7±3.0	7.1±3.4	0.550
Total CPR time	57.0±12.2	55.1±12.6	59.0±11.7	0.164

2 * These variables were presented as median \pm interquartile range

3 AV, aortic valve; BMI, body mass index; CPR, cardiopulmonary resuscitation; ETI, endotracheal intubation;

4 LMA, laryngeal mask airway; ED, emergency department; ECMO, extracorporeal membrane oxygenation;

5 ROSC, return of spontaneous circulation; TTM, targeted temperature management; EMT, emergency

6 medical technician; TEE, transesophageal echocardiography.

7

8 **Table 2. Primary and Secondary outcomes**

	AV un-compressed (n=39)	AV compressed (n=37)	Unadjusted Odds Ratio (95% CI)	P value	Adjusted Odds Ratio (95% CI)	P value
Primary Outcomes						
Sustained ROSC	21 (53.8%)	9 (24.3%)	3.63 (1.36-9.67)	0.010	4.72 (1.46-15.18)	0.009
Secondary Outcomes						
EtCO ₂ level at the 10th minute post-ED arrival	*16.0 (10.0-25.0)	*14.0 (3.75-36.75)	0.99 (0.97-1.02)	0.673	0.99 (0.97-1.02)	0.674
Any ROSC	22 (56.4%)	12 (32.4%)	2.70 (1.06-6.87)	0.038	3.30 (1.10-9.88)	0.033
Survive to hospital admission	13 (33.3%)	3 (8.1%)	5.67 (1.46-21.97)	0.012	6.74 (1.59-28.50)	0.010
Active withdrawal after resuscitation	3 (7.7%)	2 (5.4%)	1.46 (0.23-9.26)	0.689	1.38 (0.21-9.10)	0.741
Survive to hospital discharge	2 (5.1%)	0 (0.0%)	N/A	N/A	N/A	N/A
Discharge with mRS ≤ 2	0 (0.0%)	0 (0.0%)	N/A	N/A	N/A	N/A

9 * These cells were presented as median with first and third quartiles (Q1– Q3).

10 All models are adjusted for sex, Charlson Comorbidity Index, witnessed arrest, bystander CPR, initial
11 shockable rhythm, and total pre-hospital time.

12 ROSC, return of spontaneous circulation; EtCO₂, end-tidal carbon dioxide; ED, emergency department; AV,
13 aortic valve; mRS, modified Rankin scale; N/A, not applicable.