

## RESEARCH LETTER

### The Lasting Effects of the Pandemic: A Time Series Analysis of First-time Pediatric Speech Delays

Brianna M. Goodwin Cartwright, MS

Peter D Smits, PhD

Sarah Stewart, MD

Patricia J Rodriguez, PhD, MPH

Samuel Gratzl, PhD

Charlotte Baker, DrPH, MPH, CPH

Nicholas Stucky, MD, PhD

Affiliations: Truveta, Inc. Bellevue, Washington.

**Address correspondence to:** Nicholas Stucky, M.D., Ph.D., VP Research, Truveta Inc. Email: [nicholass@truveta.com](mailto:nicholass@truveta.com)

Word Count: 599

## **Abstract:**

Given the profound effects of the COVID-19 pandemic on the way individuals interact, we sought to understand if there was an increase in pediatric first-time speech and language delay diagnoses. We identified children under five years of age with a first-time speech delay diagnosis between January 1, 2018 and February 28, 2023, in Truveta Data. We calculated the monthly rate of first-time speech delay diagnoses per children with an encounter within the last year and no previous speech delay diagnosis. The Seasonal-Trend decomposition using LOESS (STL) method was used to adjust for seasonality. We also compared the difference in means between the 2018/2019 and 2021/2022 time periods. Significant increases in the mean of rates between 2018/2019 and 2021/2022 exist for the overall population and each age strata ( $p < 0.001$ ). Likely the causes of these trends are multifaceted and future research is needed to understand the specific drivers at play.

Nearly 8% of children have a communication or speech and language disorder.[1] During the COVID-19 pandemic lifestyle changes affected the way children live and communicate, including (but not limited to) stay-at-home measures, increased mask wearing, and decreases in both pre-school attendance and in-person pre-school options.[2] One Uruguayan study found motor and cognitive losses for children during the pandemic compared to a control population.[3]

Little data exists from the US about the effects of the pandemic on children, specifically understanding speech delays. We are interested to see if there is a change in first-time speech and language delay diagnoses before and after the pandemic.

**Methods:** We identified children under five years of age with encounters between January 1, 2018 and February 28, 2023, in Truveta Data. Truveta Data consists of electronic health records provided by member US healthcare systems (representing ambulatory centers, hospitals, imaging centers, and clinics and medical centers), that were deidentified by expert determination in accordance with the HIPAA Privacy Rule.[4–6]

We identified encounters associated with first-time speech delay diagnosis defined using diagnostic codes (**Appendix**). We calculated the monthly rate of first-time speech delay diagnoses per child with an encounter within the last year and no previous speech delay diagnosis. We looked at the under-five population overall and stratified by age (0-1, 1-2, 2-3, 3-4, and 4-5 years of age).

We used seasonal-trend decomposition using LOESS (STL) to create a seasonally adjusted time series of well- child visits. We also compared the difference in means between the

2018/2019 and 2021/2022 time periods; 2020 was not included due to variation in care throughout the year.

**Results:** We identified 2,463,511 patients under 5-years old who had an encounter between January 2018 and February 2023 and no previous speech delay diagnosis; of these, 3.6% had a first-time diagnosis within this period (**Table 1**). Throughout the study period the two-year-old patients had the highest rate of first-time diagnoses, followed by the one-year-old patients (**Figure 1**).

Significant increases in the estimated rates between 2018/2019 and 2021/2022 exist for the overall population and each age strata ( $p < 0.001$ ). Overall, we see a significant increase of 1.55x the rate of first-time speech diagnosis between 2018/2019 and 2021/2022 (2018/2019 rate: 1.58 [95% confidence interval: 1.53, 1.63], 2021/2022 rate: 2.45 [2.40, 2.51],  $p < 0.001$ ). We saw the largest increase in the patients who were one-year-old, where the rate increased by 1.69 times (2018/2019 rate: 2.71 [2.62, 2.80], 2021/2022 rate: 4.58 [4.47, 4.69],  $p < 0.001$ ). The patients who were two-years-old also increased by 1.63 times (2018/2019 rate: 3.31 [3.19, 3.43], 2021/2022 rate: 5.39 [5.23, 5.56],  $p < 0.001$ ).

**Discussion:** We found a significant increase in the rate of first-time speech delay diagnosis for all age groups studied. The most pronounced increases occurred for the one- and two-year-old age groups, potentially due to regular screenings at these ages. Likely the causes of these trends are multifaceted and future research is needed to understand the specific drivers at play. Factors may include fewer social interactions, psychological distress, or a reduction in speech propagation while wearing masks.[7]

This study did not analyze severity of speech delay, therapy initiation or effectiveness; however, potentially amplifying the effects of these results, decreases in therapy effectiveness during the pandemic have been seen.[8] We also did not study a causal link between speech delays and any variables (such as mask wearing). Only diagnoses within Truveta health systems were available; school or private practice-based diagnoses were not included. Age during months without an encounter was estimated using the age at previous encounters. Despite these limitations, to our knowledge, these data are the first to show an increase in speech delay diagnoses in the years following the pandemic.

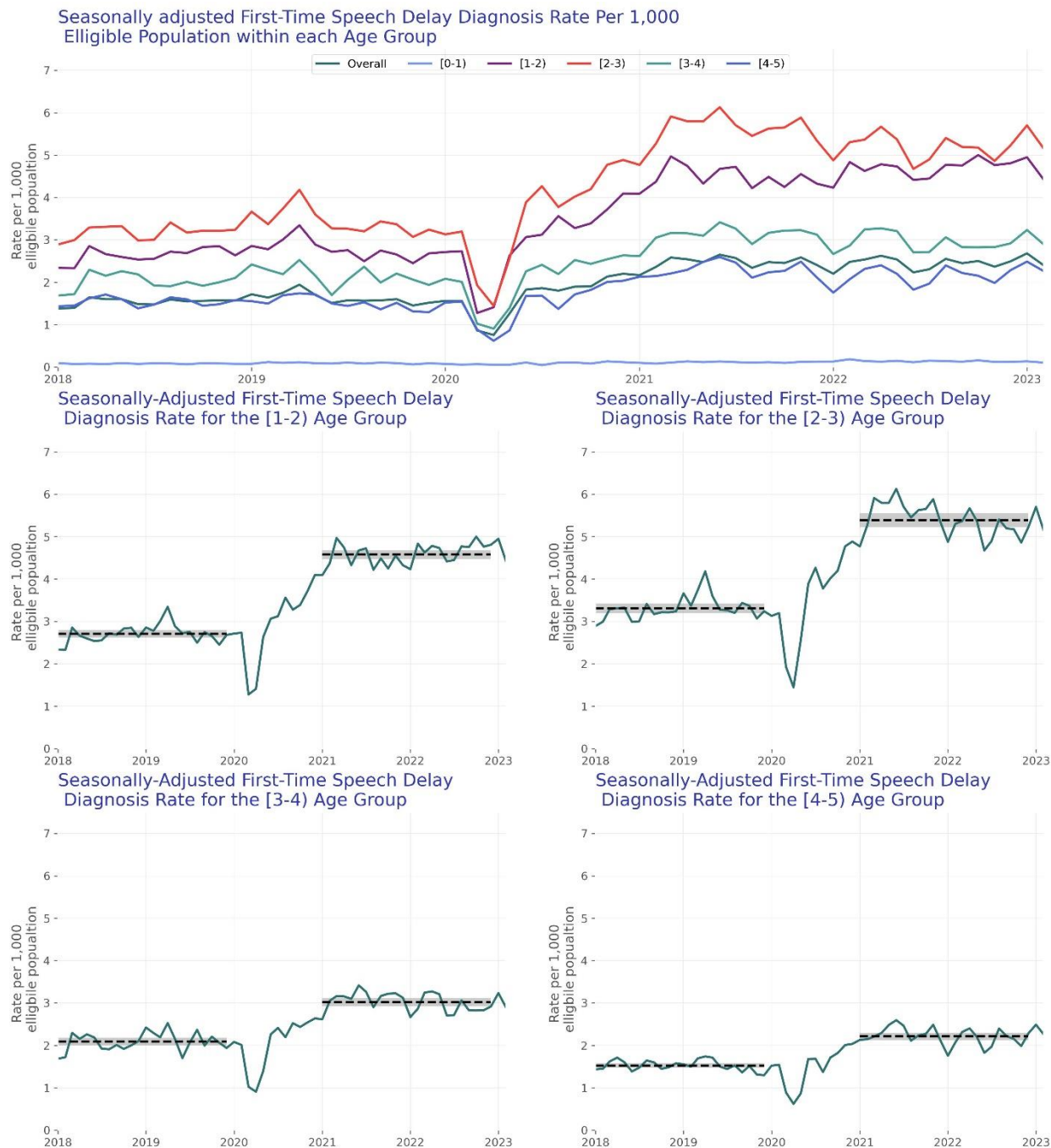
**TABLE 1** – Demographics of population based on the year of speech delay diagnosis.

	<b>Overall</b>	<b>2018/ 2019</b>	<b>2020</b>	<b>2021/ 2022</b>	<b>2023</b>	<b>No diagnosis</b>		
<b><i>n</i></b>	2,463,511	31,000	14,377	38,851	3,553	2,375,730		
<b>Sex, <i>n</i> (%)</b>	<b>Female</b>	1,173,756 (47.6)	10,016 (32.3)	4,740 (33.0)	12,894 (33.2)	1,196 (33.7)	1,144,910 (48.2)	
	<b>Male</b>	1,280,604 (52.0)	20,877 (67.3)	9,598 (66.8)	25,914 (66.7)	2,354 (66.3)	1,221,861 (51.4)	
	<b>Unknown</b>	9,151 (0.4)	107 (0.3)	39 (0.3)	43 (0.1)	3 (0.1)	8,959 (0.4)	
<b>Race, <i>n</i> (%)</b>	<b>White</b>	1,221,564 (49.6)	16,859 (54.4)	7,769 (54.0)	18,560 (47.8)	1,684 (47.4)	1,176,692 (49.5)	
	<b>Black*</b>	247,261 (10.0)	3,720 (12.0)	1,837 (12.8)	5,125 (13.2)	456 (12.8)	236,123 (9.9)	
	<b>Asian</b>	125,873 (5.1)	1,982 (6.4)	819 (5.7)	2,328 (6.0)	169 (4.8)	120,575 (5.1)	
	<b>American Indian or Alaska Native</b>	18,518 (0.8)	404 (1.3)	120 (0.8)	363 (0.9)	27 (0.8)	17,604 (0.7)	
	<b>Native Hawaiian or Other Pacific Islander</b>	14,735 (0.6)	198 (0.6)	109 (0.8)	325 (0.8)	35 (1.0)	14,068 (0.6)	
	<b>Other Race</b>	293,004 (11.9)	4,091 (13.2)	1,731 (12.0)	5,046 (13.0)	429 (12.1)	281,707 (11.9)	
	<b>Unknown</b>	542,556 (22.0)	3,746 (12.1)	1,992 (13.9)	7,104 (18.3)	753 (21.2)	528,961 (22.3)	
	<b>Ethnicity, <i>n</i> (%)</b>	<b>Hispanic or Latino</b>	434,272 (17.6)	5,210 (16.8)	2,495 (17.4)	8,331 (21.4)	762 (21.4)	417,474 (17.6)
		<b>Not Hispanic or Latino</b>	1,481,879 (60.2)	22,318 (72.0)	10,105 (70.3)	24,746 (63.7)	2,212 (62.3)	1,422,498 (59.9)
<b>Unknown</b>		547,360 (22.2)	3,472 (11.2)	1,777 (12.4)	5,774 (14.9)	579 (16.3)	535,758 (22.6)	

<b>Age Group, n (%)</b>	<b>[0 - 1] years old</b>	1,340 (1.5)	487 (1.6)	206 (1.4)	599 (1.5)	48 (1.4)
	<b>[1 - 2] years old</b>	30,013 (34.2)	10,069 (32.5)	4,989 (34.7)	13,665 (35.2)	1,290 (36.3)
	<b>[2 - 3] years old</b>	29,577 (33.7)	10,374 (33.5)	4,848 (33.7)	13,148 (33.8)	1,207 (34.0)
	<b>[3 - 4] years old</b>	15,728 (17.9)	5,919 (19.1)	2,540 (17.7)	6,688 (17.2)	581 (16.4)
	<b>[4 - 5] years old</b>	11,123 (12.7)	4,151 (13.4)	1,794 (12.5)	4,751 (12.2)	427 (12.0)

\*Black refers to Black or African American Individuals

**FIGURE 1** - The seasonally adjusted first-time diagnosis rate of speech delays for each age group. The top panel shows overall and all age groups. The 4-lower graphs show each age group with rates above 1. The green line represents the trend, the dashed black line represents the 2-year mean, and the shaded grey regions are the 95% confidence intervals.





**Appendix** – Diagnostic codes used to define speech delays.

<i>Code System</i>	<i>Concept Code</i>	<i>Concept Name</i>
ICD10CM	F80	Specific developmental disorders of speech and language
ICD10CM	F80.0	Phonological disorder
ICD10CM	F80.1	Expressive language disorder
ICD10CM	F80.2	Mixed receptive-expressive language disorder
ICD10CM	F80.4	Speech and language development delay due to hearing loss
ICD10CM	F80.8	Other developmental disorders of speech and language
ICD10CM	F80.81	Childhood onset fluency disorder
ICD10CM	F80.82	Social pragmatic communication disorder
ICD10CM	F80.89	Other developmental disorders of speech and language
ICD10CM	F80.9	Developmental disorder of speech and language, unspecified
SNOMED CT	229721007	Speech delay
SNOMED CT	268672004	Disorder of speech and language development
SNOMED CT	1179408008	CHD3-related developmental delay, speech delay, intellectual disability, abnormalities of vision, facial dysmorphism syndrome
SNOMED CT	771472009	Developmental and speech delay due to SOX5 deficiency
SNOMED CT	62211000119103	Moderate expressive language delay
SNOMED CT	62221000119105	Severe expressive language delay
SNOMED CT	62231000119108	Mild expressive language delay
SNOMED CT	89361000119103	Mild developmental articulation disorder
SNOMED CT	435321000124106	Acquired epileptic aphasia, non-refractory
SNOMED CT	435331000124109	Acquired epileptic aphasia, refractory
SNOMED CT	230438007	Aphasia co-occurrent with epilepsy
SNOMED CT	229623002	Developmental dysfluency
SNOMED CT	229698003	Articulatory dyspraxia
SNOMED CT	229699006	Immature articulatory praxis
SNOMED CT	229701006	Developmental articulatory dyspraxia
SNOMED CT	229734008	Expressive language delay
SNOMED CT	427145007	Articulation disorder due to hyperkinesia
SNOMED CT	441719005	Speech and language developmental delay due to hearing loss
SNOMED CT	716199000	Mehes syndrome
SNOMED CT	268673009	Developmental aphasia
SNOMED CT	268734000	Developmental expressive language disorder
SNOMED CT	312214005	Floating-Harbor syndrome
SNOMED CT	386701004	Developmental articulation disorder

SNOMED CT

391099000 O/E - speech delay

## REFERENCES

- 1 Black LI, Vahratian A, Hoffman HJ. Communication disorders and use of intervention services among children aged 3–17 years: United States, 2012. *NCHS data brief* 2015;**205**.<https://www.cdc.gov/nchs/products/databriefs/db205.htm>
- 2 Weisenfeld G. Impacts of Covid-19 on Preschool Enrollment and Spending. National Institute for Early Education Research 2021. [https://nieer.org/wp-content/uploads/2021/03/NIEER\\_Policy\\_Brief\\_Impacts-of-Covid-19-on\\_Preschool\\_Enrollment\\_and\\_Spending\\_3\\_16\\_21.pdf](https://nieer.org/wp-content/uploads/2021/03/NIEER_Policy_Brief_Impacts-of-Covid-19-on_Preschool_Enrollment_and_Spending_3_16_21.pdf)
- 3 González M, Loose T, Liz M, *et al.* School readiness losses during the COVID-19 outbreak. A comparison of two cohorts of young children. *Child Development* 2022;**93**:910–24. doi:10.1111/cdev.13738
- 4 Althouse BM, Baker C, Smits PD, *et al.* Racial inequality in COVID-treatment and in-hospital length of stay in the US over time. *Front Public Health* 2023;**10**:1074775. doi:10.3389/fpubh.2022.1074775
- 5 Smits PD, Gratzl S, Simonov M, *et al.* Risk of COVID-19 breakthrough infection and hospitalization in individuals with comorbidities. *Vaccine* 2023;**41**:2447–55. doi:10.1016/j.vaccine.2023.02.038
- 6 Goodwin Cartwright BM, Wang M, Rodriguez P, *et al.* Changes in Minoxidil Prescribing After Media Attention About Oral Use for Hair Loss. *JAMA Netw Open* 2023;**6**:e2312477. doi:10.1001/jamanetworkopen.2023.12477
- 7 Caniato M, Marzi A, Gasparella A. How much COVID-19 face protections influence speech intelligibility in classrooms? *Applied Acoustics* 2021;**178**:108051. doi:10.1016/j.apacoust.2021.108051
- 8 Tohidast SA, Mansuri B, Bagheri R, *et al.* Provision of speech-language pathology services for the treatment of speech and language disorders in children during the COVID-19 pandemic: Problems, concerns, and solutions. *International Journal of Pediatric Otorhinolaryngology* 2020;**138**:110262. doi:10.1016/j.ijporl.2020.110262

**Institutional review board statement:**

This study performs analysis of de-identified electronic health records (EHR) data accessed via Truveta Studio. Truveta Studio only contains data that has been de-identified by expert determination in accordance with HIPAA Privacy Rule, and therefore this study was exempt from Institutional Review Board approval.

**Data availability statement:**

The data used in this study is available to all Truveta subscribers and may be accessed at [studio.truveta.com](https://studio.truveta.com).