

SUPPLEMENT:

Effect of prioritized *SORL1* missense variants supports clinical consideration for familial Alzheimer's Disease

Henne Holstege^{1,2,3,4*}, Matthijs W. J. de Waal^{1,4*}, Niccolo Tesi^{1,2,4}, Sven J. van der Lee^{1,3,4}, ADES-consortium, ADSP consortium, StEP-AD consortium, Knight-ADRC, UCSF/NYGC/UAB, Maartje Vogel⁵, Resie van Spaendonk⁵, Marc Hulsman^{1,2,4}, Olav M. Andersen^{6*}

1. Section Genomics of Neurodegenerative Diseases and Aging, Department of Clinical Genetics, Vrije Universiteit Amsterdam, Amsterdam UMC, Amsterdam, The Netherlands
2. Delft Bioinformatics Lab, Delft University of Technology, Delft, The Netherlands
3. Alzheimer Center Amsterdam, Neurology, Vrije Universiteit Amsterdam, Amsterdam UMC location VUmc, Amsterdam, The Netherlands.
4. Amsterdam Neuroscience, Neurodegeneration, Amsterdam, The Netherlands
5. Dept. of Human Genetics, Genome Diagnostics Laboratory, Amsterdam UMC, Vrije Universiteit Amsterdam, the Netherlands
6. Dept. of Biomedicine, Aarhus University, Denmark

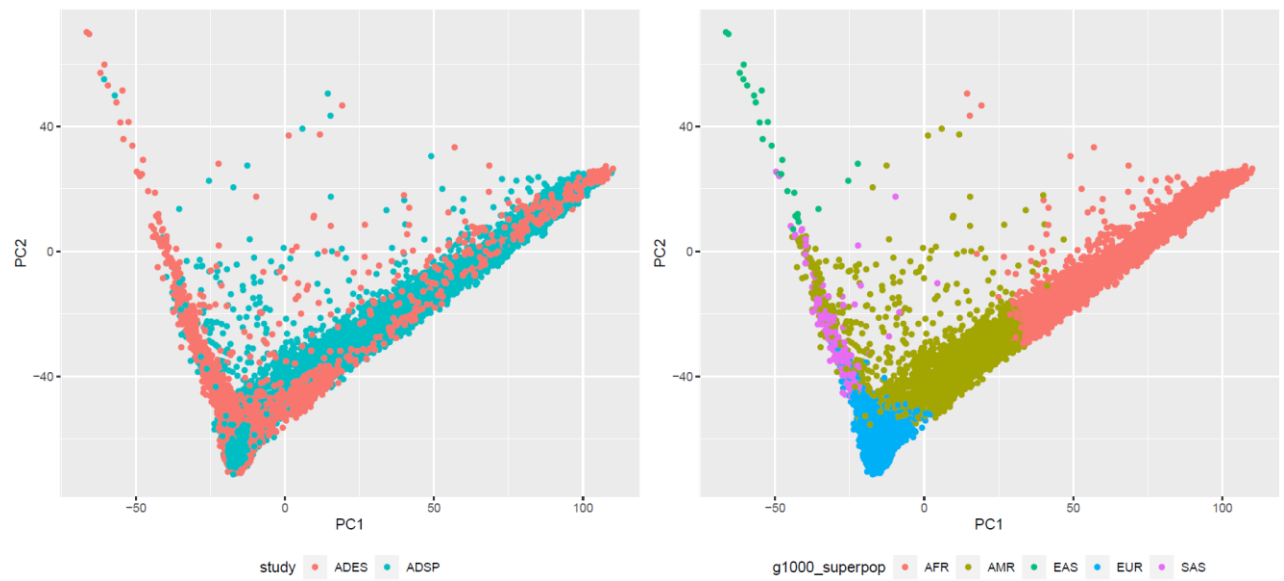
*Authors contributed equally to this work.

Corresponding Author:

Henne Holstege

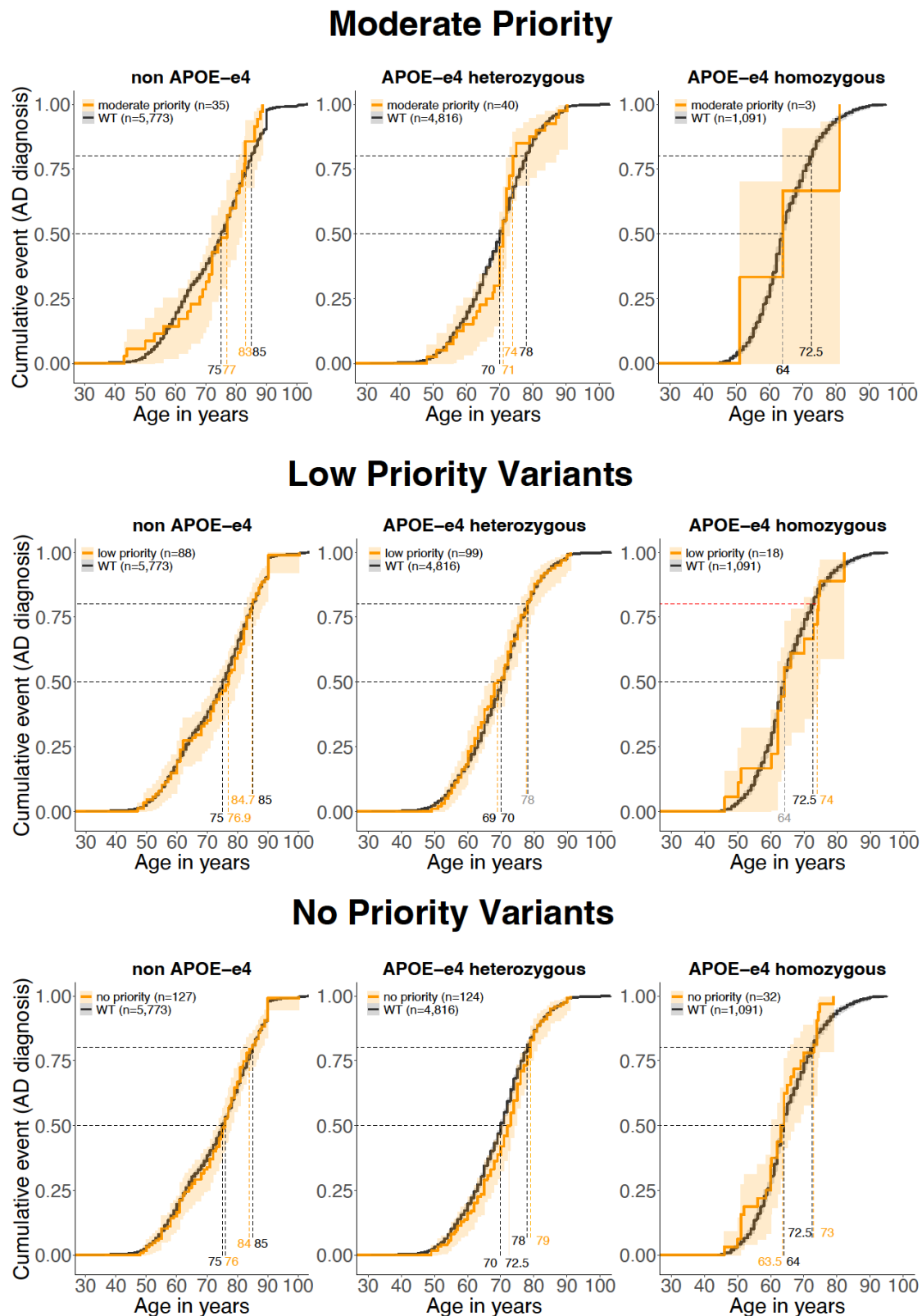
h.holstege@amsterdam.nl

Fig S1. PCA plots



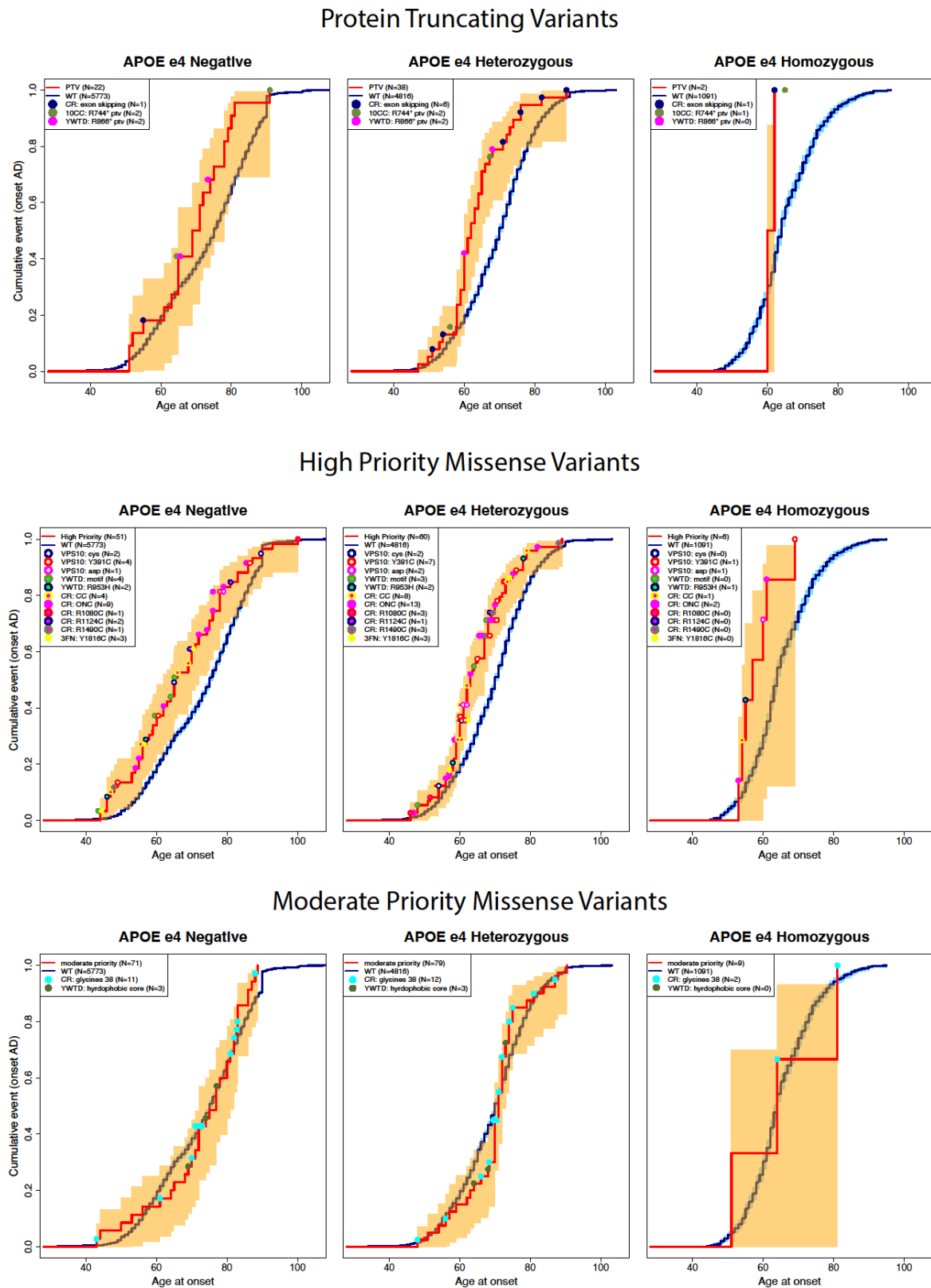
Principal Component Analysis. With **left** the showing the clusters colored by study cohort (ADES = Alzheimer Disease European Sequencing consortium, ADSP = Alzheimer's Disease Sequencing Project). On the **right** are the clusters visible per population group (AFR = African, AMR = Ad mixed American, EAS = East Asian, EUR = European, SAS = South Asian). For further information on study cohort see: Holstege et al 2022: <https://doi.org/10.1038/s41588-022-01208-7>

Fig S2:



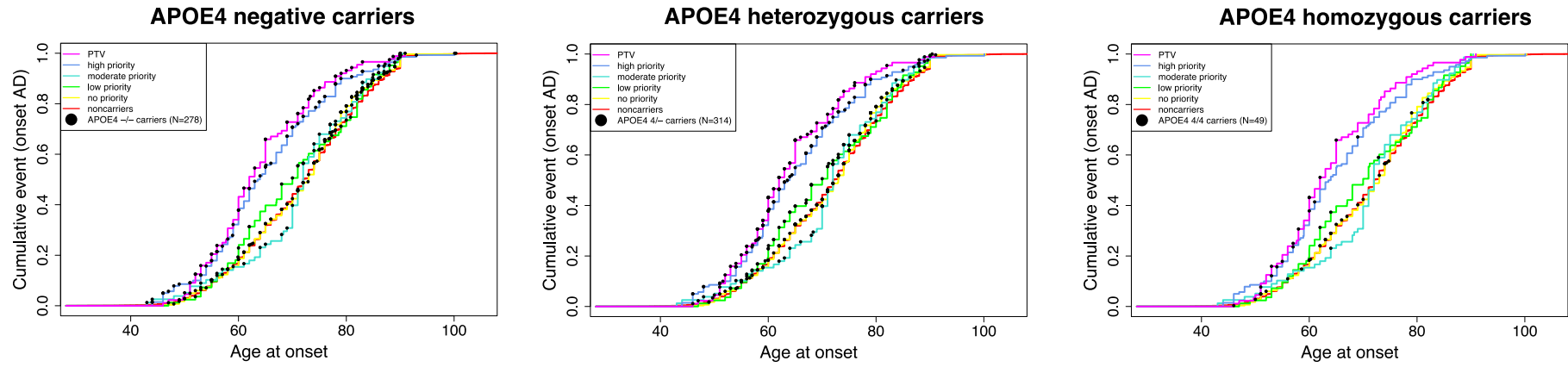
The effects of MPVs, LPVs and NPVs in context of APOE. A. Age at onset of MPVs relative to *SORL1* WT carriers. The orange ages indicate at what age respectively 50% and 80% of the variant carriers had Alzheimer’s Disease, the black ages indicate at the age at which 50% or 80% of the *SORL1* WT carriers developed AD. **B.** Low priority variants in context of APOE genotype. **C.** No priority variants in context of APOE genotype.

Fig S3: Age at onset for specific variant carriers per priority group in context of *APOE*-genotype.



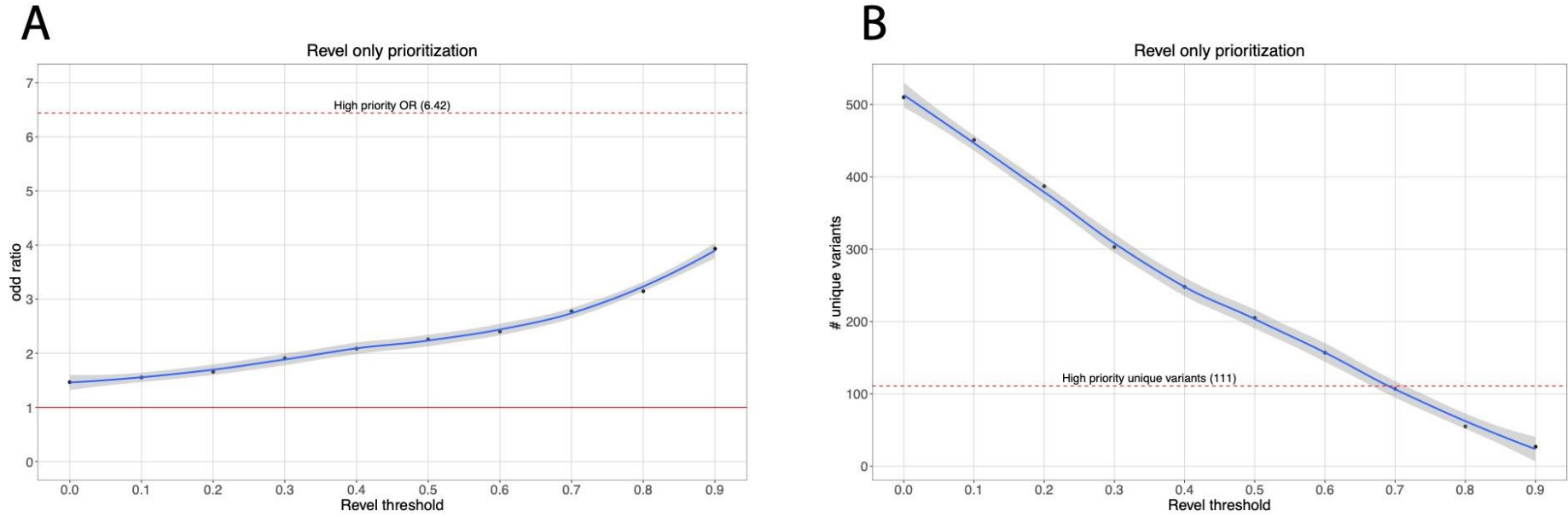
Age at onset of individual carriers with a specific variant (colored dot), in context of their *APOE*-genotype and priority group.

Fig S4 Age at onset per individual *APOE*-genotype carrier



The age at onset of individual carriers with a specific *APOE* genotype (black dot), on prioritized categories.

Fig S5: Prioritization by REVEL compared to prioritization by



Prioritization by REVEL score. A.) The increased risk of AD (odds ratio, y-axis), for carriers of variants with a REVEL threshold higher than a give threshold (x-axis). For comparison, the red dotted line indicates the OR in the HPV group. **B.)** The number of unique variants (y-axis) with a REVEL score above a given threshold (x-axis); the red dotted line demonstrates the number of unique variants found in the high priority category.

Supplemental Tables:

Table S1. XLS FILE
All excluded variants;

Table S2. XLS FILE
Rare variants (MAF < 0.05%)

Table S3. XLS FILE
Non-rare variants (MAF > 0.05%)

Table S4: List of high priority variants based on MDMD analysis and sequence conservation.

SORLA motifs	domain pos	SORLA residues (aa number per subdomain)
VPS10p		
L2 Cys lost		C ⁴⁶⁷ , C ⁴⁷³
L1 & L2 Cys gained	L1 & L2 protrusions;	L1: 391 – 411; L2: 457 - 493
Variants with REVEL>0.5	Random	—Random —Asp-box specific variants in domain positions 42, 44, 46, 48,49: (β1) S ¹³⁸ , D ¹⁴⁰ , G ¹⁴² , S ¹⁴⁴ , F ¹⁴⁵ , (β2) T ¹⁹⁰ , D ¹⁹² , NA, T ¹⁹⁶ , NA (β3) S ²³⁴ , D ²³⁶ , G ²³⁸ , T ²⁴⁰ , W ²⁴¹ , (β4) S ²⁸⁰ , D ²⁸² , NA, S ²⁸⁶ , NA, (β5) S ³²⁹ , NA, NA, NA, NA, (β6) S ³⁷⁵ , NA, G ³⁷⁹ , NA, F ³⁸² , (β7) T ⁴⁴³ , D ⁴⁴⁵ , G ⁴⁴⁷ , T ⁴⁴⁹ , W ⁴⁵⁰ , (β8) S ⁵²³ , NA, G ⁵²⁷ , NA, W ⁵³⁰ , (β9) S ⁵⁶⁴ , N ⁵⁶⁶ , G ⁵⁶⁸ , T ⁵⁷⁰ , W ⁵⁷¹
10CC		
ONC (Cys loss)		(CCa) C ⁶²⁵ , C ⁶⁴³ , C ⁶⁶⁰ , C ⁶⁷⁵ , (CCb) C ⁶⁷⁷ , C ⁶⁸⁴ , C ⁶⁹⁹ , C ⁷¹⁶ , C ⁷³⁶ , C ⁷⁵²
ONC (Cys gained)		random
YWTD		
YWTD-motif	16, 17, 18, 19	(β2) Y ⁸⁰³ , W ⁸⁰⁴ , S ⁸⁰⁵ , D ⁸⁰⁶ ; (β3) Y ⁸⁴⁷ , W ⁸⁴⁸ , NA, D ⁸⁵⁰ , (β4) F ⁸⁹¹ , W ⁸⁹² , T ⁸⁹³ , D ⁸⁹⁴ ; (β5) Y ⁹³⁴ , W ⁹³⁵ , T ⁹³⁶ , D ⁹³⁷ ; (β6) Y ⁹⁷⁴ , W ⁹⁷⁵ , NA, D ⁹⁷⁷
Partly conserved Pro	3	(β4) P ⁸⁷⁸ , (β5) P ⁹²³ , (β6) P ⁹⁶³
Partly conserved Asp	9	(β2) D ⁷⁹⁶ , (β5) D ⁹²⁹
Highly conserved Ile	27	(β1) I ⁷⁶⁹ , (β2) I ⁸¹² , (β3) I ⁸⁵⁶ , (β4) I ⁹⁰² , (β5) I ⁹⁴³ , (β6) I ⁹⁸³
Highly conserved Arg	29	(β1) R ⁷⁷¹ , (β2) R ⁸¹⁴ , (β3) NA, (β4) R ⁹⁰⁴ , (β5) R ⁹⁴⁵ , (β6) R ⁹⁸⁵
Highly conserved G	35	(β1) G ⁷⁷⁷ , (β2) G ⁸¹⁹ , (β3) G ⁸⁶³ , (β4) G ⁹⁰⁹ , (β5) G ⁹⁵⁰ , (β6) G ⁹⁹¹
R lost*	38	(β3) R ⁸⁶⁶ , (β5) R ⁹⁵³
Cysteines β2		(β2) C ⁸⁰¹ , (β2) C ⁸¹⁶
EGF		
ONC (Cys loss)		C ¹⁰²¹ , C ¹⁰²⁶ , C ¹⁰³⁰ , C ¹⁰⁴⁰ , C ¹⁰⁴² , C ¹⁰⁵⁸ , C ¹⁰⁶⁰ , C ¹⁰⁷¹
ONC (Cys gain)		random
CR		
Calcium cage (D,D,D,E)	37, 41, 47, 48, No substitutions tolerated	(CR1) D ¹⁰⁹⁸ , D ¹¹⁰² , D ¹¹⁰⁸ , E ¹¹⁰⁹ ; (CR2) D ¹¹³⁹ , D ¹¹⁴³ , D ¹¹⁴⁹ , E ¹¹⁵⁰ ; (CR3) D ¹¹⁷⁸ , D ¹¹⁸² , D ¹¹⁸⁸ , E ¹¹⁸⁹ ; (CR4) D ¹²¹⁹ , D ¹²²³ , D ¹²²⁹ , E ¹²³⁰ ; (CR5) D ¹²⁵⁷ , D ¹²⁶¹ , D ¹²⁶⁷ , E ¹²⁶⁸ ; (CR6) D ¹²⁹⁷ , Q ¹³⁰¹ , D ¹³⁰⁷ , E ¹³⁰⁸ ; (CR7) D ¹³⁴⁵ , D ¹³⁴⁹ , D ¹³⁵⁵ , E ¹³⁵⁶ ; (CR8) D ¹³⁸⁹ , D ¹³⁹³ , D ¹³⁹⁹ , E ¹⁴⁰⁰ ; (CR9) D ¹⁴³⁹ , D ¹⁴⁴³ , D ¹⁴⁴⁹ , E ¹⁴⁵⁰ ; (CR10) D ¹⁴⁹² , D ¹⁴⁹⁶ , D ¹⁵⁰² , E ¹⁵⁰³ ; (CR11) D ¹⁵³⁵ , D ¹⁵³⁹ , D ¹⁵⁴⁵ , E ¹⁵⁴⁶
ONC (Cys loss)	15, 23, 29, 36, 42, 55	(CR1) C ¹⁰⁷⁸ , C ¹⁰⁸⁵ , C ¹⁰⁹⁰ , C ¹⁰⁹⁷ , C ¹¹⁰³ , C ¹¹¹² ; (CR2) C ¹¹¹⁷ , C ¹¹²⁵ , C ¹¹³¹ , C ¹¹³⁸ , C ¹¹⁴⁴ , C ¹¹⁵³ ; (CR3) C ¹¹⁵⁸ , C ¹¹⁶⁵ , C ¹¹⁷⁰ , C ¹¹⁷⁷ , C ¹¹⁸³ , C ¹¹⁹² ; (CR4) C ¹¹⁹⁹ , C ¹²⁰⁶ , C ¹²¹¹ , C ¹²¹⁸ , C ¹²²⁴ , C ¹²³⁵ ; (CR5) C ¹²³⁹ , C ¹²⁴⁴ , C ¹²⁴⁹ , C ¹²⁵⁶ , C ¹²⁶² , C ¹²⁷¹ ; (CR6) C ¹²⁷⁵ , C ¹²⁸³ , C ¹²⁸⁹ , C ¹²⁹⁶ , C ¹³⁰² , C ¹³¹⁵ ; (CR7) C ¹³²⁵ , C ¹³³² , C ¹³³⁷ , C ¹³⁴⁴ , C ¹³⁵⁰ , C ¹³⁵⁹ ; (CR8) C ¹³⁶⁸ , C ¹³⁷⁶ , C ¹³⁸¹ , C ¹³⁸⁸ , C ¹³⁹⁴ , C ¹⁴⁰³ ; (CR9) C ¹⁴¹⁹ , C ¹⁴²⁶ , C ¹⁴³¹ , C ¹⁴³⁸ , C ¹⁴⁴⁴ , C ¹⁴⁵³ ; (CR10) C ¹⁴⁷¹ , C ¹⁴⁷⁸ , C ¹⁴⁸⁴ , C ¹⁴⁹¹ , C ¹⁴⁹⁷ , C ¹⁵⁰⁶ ; (CR11) C ¹⁵¹⁴ , C ¹⁵²¹ , C ¹⁵²⁷ , C ¹⁵³⁴ , C ¹⁵⁴⁰ , C ¹⁵⁴⁹
ONC (Cys gain)	random	random
Asx-turn (D)	44, No substitutions tolerated	(CR1) D ¹¹⁰⁵ , (CR2) D ¹¹⁴⁶ , (CR3) D ¹¹⁸⁵ , (CR4) D ¹²²⁶ , (CR5) D ¹²⁶⁴ , (CR6) D ¹³⁰⁴ , (CR7) D ¹³⁵² , (CR8) D ¹³⁹⁶ , (CR9) D ¹⁴⁴⁶ , (CR10) D ¹⁴⁹⁹ , (CR11) D ¹⁵⁴²
3Fn		
Partly conserved prolines	6, 7, Only when P is lost	(3FN1) NA, NA; (3FN2) P ¹⁶⁵⁴ , NA; (3FN3) P ¹⁷⁴⁹ , P ¹⁷⁵⁰ ; (3FN4) P ¹⁸⁴³ , P ¹⁸⁴⁴ , (3FN5) P ¹⁹³⁴ , P ¹⁹³⁵ ; (3FN6) NA, P ²⁰²⁷
W; B-strand	25	(3FN1) W ¹⁵⁷⁵ , (3FN2) W ¹⁶⁷³ , (3FN3) (L ¹⁷⁶⁷), (3FN4) W ¹⁸⁶² , (3FN5) W ¹⁹⁵² , (3FN6) W ²⁰⁴³
Partly conserved prolines	28, Only when P is lost	(3FN1) P ¹⁵⁷⁸ , (3FN2) P ¹⁶⁷⁶ , (3FN3) NA, (3FN4) P ¹⁸⁶⁵ , (3FN5) P ¹⁹⁵⁵ , (3FN6) NA
Partly conserved glycines	36, 96, Only when G is lost	(3FN2) G ¹⁶⁸¹ , (3FN2) G ¹⁷³² , (3FN4) G ¹⁹¹⁷
Y; C-strand	41	(3FN1) Y ¹⁵⁸⁸ , (3FN2) Y ¹⁶⁸⁶ , (3FN3) Y ¹⁷⁷⁸ , (3FN4) Y ¹⁸⁷⁰ , (3FN5) Y ¹⁹⁶⁵ , (3FN6) Y ²⁰⁵⁹
L; EF-loop (tyrosine corner)	77	(3FN1) L ¹⁶¹⁷ , (3FN2) L ¹⁷¹³ , (3FN3) L ¹⁸¹⁰ , (3FN4) NA, (3FN5) L ¹⁹⁹⁶ , (3FN6) L ²⁰⁸⁷
Partly conserved prolines	79, Only when P is lost	(3FN1) P ¹⁶¹⁹ , (3FN5) P ¹⁹⁹⁸
Y; F-strand (tyrosine- corner)	83	(3FN1) Y ¹⁶²³ , (3FN2) Y ¹⁷¹⁹ , (3FN3) Y ¹⁸¹⁶ , (3FN4) Y ¹⁹⁰⁵ , (3FN5) Y ²⁰⁰² , (3FN6) Y ²⁰⁹³
Arg hotspot	88	(3FN4) R ¹⁹¹⁰
Cysteines 1 st domain	39, 91	(3FN1) C ¹⁵⁸⁶ , (3FN1) C ¹⁶³¹
Cysteines 6 th domain	91, 98	(3FN6) C ²¹⁰¹ , (3FN6) C ²¹⁰⁸

Prioritization of positions likely to harbor pathogenic mutations based on either domain sequence conservation or because the DMDM analysis. Analysis of enrichment: number of observations in sample (cases and controls) per possible positions. NA: in the specific domain, the prioritized variant does not exist.

Table S5: Moderate priority variants

SORLA motifs	domain pos	SORLA residue/aa no., per subdomain
VPS10p		
RGD (in ProP)		R ⁶³ , G ⁶⁴ , D ⁶⁵
RRKR (in ProP)		R ⁷⁸ , R ⁷⁹ , K ⁸⁰ , R ⁸¹
Hydrophobic; A-strand	5, 6	(β1) V ¹⁰⁶ , V ¹⁰⁷ , (β2) F ¹⁶⁷ , Y ¹⁶⁸ , (β3) L ²⁰⁹ , L ²¹⁰ , (β4) NA, F ²⁵¹ , (β5) F ³⁰⁰ , NA, (β6) Y ³⁴⁹ , Y ³⁵⁰ , (β7) F ⁴¹⁴ , NA, (β8) L ⁴⁹⁵ , NA, (β9) Y ⁵³⁹ , Y ⁵⁴⁰ , (β10) V ⁵⁸³ , Y ⁵⁸⁴
Hydrophobic; B-strand	19, 20, 21	(β1) I ¹¹⁷ , V ¹¹⁸ , A ¹¹⁹ , (β2) Y ¹⁷⁷ , I ¹⁷⁸ , F ¹⁷⁹ , (β3) L ²¹⁸ , L ²¹⁹ , L ²²⁰ , (β4) I ²⁶⁴ , Y ²⁶⁵ , I ²⁶⁶ , (β5) Y ³⁰⁶ , M ³⁰⁷ , F ³⁰⁸ , (β6) V ³⁵⁹ , F ³⁶⁰ , V ³⁶¹ , (β7) Y ⁴²⁴ , I ⁴²⁵ , A ⁴²⁶ , (β8) I ⁵⁰⁴ , I ⁵⁰⁵ , A ⁵⁰⁶ , (β9) I ⁵⁴⁸ , I ⁵⁴⁹ , NA, (β10) V ⁵⁹⁶ , F ⁵⁹⁷ , NA
Hydrophobic; C-strand	39, 40, 41	(β1) V ¹³⁵ , Y ¹³⁶ , V ¹³⁷ , (β2) L ¹⁸⁷ , W ¹⁸⁸ , I ¹⁸⁹ , (β3) L ²³¹ , W ²³² , NA, (β4) V ²⁷⁷ , F ²⁷⁸ , NA, (β5) L ³²⁶ , W ³²⁷ , V ³²⁸ , (β6) L ³⁷² , Y ³⁷³ , I ³⁷⁴ , NA, V ⁴⁴¹ , I ⁴⁴² , (β7) V ⁵²⁰ , Y ⁵²¹ , I ⁵²² , (β8) L ⁵⁶¹ , NA, Y ⁵⁶³ , (β9) L ⁶¹³ , NA, V ⁶¹⁵
YWTD		
hydrophobic	6, 8, 15	(β2) L ⁷⁹³ , F ⁷⁹⁵ , L ⁸⁰² ; (β3) L ⁸³⁷ , F ⁸³⁹ , L ⁸⁴⁶ ; (β4) L ⁸⁸¹ , L ⁸⁸³ , M ⁸⁹⁰ ; (β5) I ⁹²⁶ , V ⁹²⁸ , I ⁹³³ ; (β6) I ⁹⁶⁶ , V ⁹⁶⁸ , I ⁹⁷³ ; (β1) M ¹⁰⁰⁷ , I ¹⁰⁰⁹ , NA
hydrophobic	41, 42	(β1) NA, L ⁷⁸² ; (β2) V ⁸²⁵ , I ⁸²⁶ ; (β3) I ⁸⁶⁹ , V ⁸⁷⁰ ; (β4) L ⁹¹⁵ , V ⁹¹⁶ ; (β5) I ⁹⁵⁶ , L ⁹⁵⁷ ; (β6) I ⁹⁹⁶ , L ⁹⁹⁷
Highly conserved L	47	(β1) L ⁷⁸⁷ ; (β2) L ⁸³¹ ; (β3) L ⁸⁷⁵ ; (β4) V ⁹²⁰ ; (β5) L ⁹⁶⁰ ; (β6) L ¹⁰⁰¹
SBIN, NXI, Ligand binding?	4, 20 in β4/β5/β6 blades	(β4) R ⁸⁷⁹ ; (β4) W ⁸⁹⁵ ; (β5) N ⁹²⁴ ; (β6) Y ⁹⁶⁴ ; (β6) W ⁹⁷⁸
CR		
Asx-turn (S)	46, Only when S is lost	(CR1) S ¹¹⁰⁷ , (CR2) S ¹¹⁴⁸ , (CR3) S ¹¹⁸⁷ , (CR4) S ¹²²⁸ , (CR5) S ¹²⁶⁶ , (CR6) S ¹³⁰⁶ , (CR7) S ¹³⁵⁴ , (CR8) S ¹³⁹⁸ , (CR9) S ¹⁴⁴⁸ , (CR10) NA, (CR11) S ¹⁵⁴⁴
Fingerprints	34, 39	(CR1) W ¹⁰⁹⁵ , D ¹¹⁰⁰ ; (CR2) Y ¹¹³⁶ , E ¹¹⁴¹ ; (CR3) W ¹¹⁷⁵ , D ¹¹⁸⁰ ; (CR4) W ¹²¹⁶ , D ¹²²¹ ; (CR5) K ¹²⁵⁴ , L ¹²⁵⁹ ; (CR6) M ¹²⁹⁴ , I ¹²⁹⁹ ; (CR7) W ¹³⁴² , M ¹³⁴⁷ ; (CR8) W ¹³⁸⁶ , E ¹³⁹¹ ; (CR9) W ¹⁴³⁶ , Y ¹⁴⁴¹ ; (CR10) K ¹⁴⁸⁹ , H ¹⁴⁹⁴ ; (CR11) E ¹⁵³² , F ¹⁵³⁷
Phe-Ile hyd core, Strong conservation	21, 30 (Few variants in DMDM analysis)	(CR1) Y ¹⁰⁸³ , I ¹⁰⁹¹ ; (CR2) F ¹¹²³ , I ¹¹³² ; (CR3) Y ¹¹⁶³ , I ¹¹⁷¹ ; (CR4) F ¹²⁰⁴ , I ¹²¹² ; (CR5) F ¹²⁴² , I ¹²⁵⁰ ; (CR6) F ¹²⁸¹ , L ¹²⁹⁰ ; (CR7) F ¹³³⁰ , I ¹³³⁸ ; (CR8) F ¹³⁷⁴ , I ¹³⁸² ; (CR9) Y ¹⁴²⁴ , V ¹⁴³² ; (CR10) F ¹⁴⁷⁶ , I ¹⁴⁸⁵ ; (CR11) F ¹⁵¹⁹ , I ¹⁵²⁸
Partly conserved glycines Partial conservation	27, 38 (Few variants in DMDM analysis)	(CR1) G ¹⁰⁸⁸ , NA; (CR2) G ¹¹²⁹ , NA; (CR3) G ¹¹⁶⁸ , G ¹¹⁷⁹ ; (CR4) G ¹²⁰⁹ , G ¹²²⁰ ; (CR5) G ¹²⁴⁷ , G ¹²⁵⁸ ; (CR6) NA, G ¹²⁹⁸ ; (CR7) G ¹³³⁵ , G ¹³⁴⁶ ; (CR8) G ¹³⁷⁹ , NA; (CR9) G ¹⁴²⁹ , G ¹⁴⁴⁰ ; (CR10) NA, G ¹⁴⁹³ ; (CR11) NA, G ¹⁵³⁶
3Fn		
Hydrophobic	11, 13	(3FN1) L ¹⁵⁶¹ , W ¹⁵⁶³ ; (3FN2) L ¹⁶⁵⁹ , L ¹⁶⁶¹ ; (3FN3) I ¹⁷⁵³ , I ¹⁷⁵⁵ ; (3FN4) L ¹⁸⁴⁸ , A ¹⁸⁵⁰ ; (3FN5) L ¹⁹³⁸ , V ¹⁹⁴⁰ ; (3FN6) L ²⁰³⁰ , I ²⁰³²
Hydrophobics in B-strand	21, 23	(3FN1) V ¹⁵⁷¹ , L ¹⁵⁷³ ; (3FN2) I ¹⁶⁶⁹ , NA; (3FN3) L ¹⁷⁶³ , F ¹⁷⁶⁵ ; (3FN4) V ¹⁸⁵⁸ , C ¹⁸⁶⁰ ; (3FN5) V ¹⁹⁴⁸ , I ¹⁹⁵⁰ ; (3FN6) V ²⁰³⁹ , L ²⁰⁴¹
Hydrophobics in C-strand	43, 45	(3FN1) V ¹⁵⁹⁰ , Y ¹⁵⁹² ; (3FN2) V ¹⁶⁸⁸ , Y ¹⁶⁹⁰ ; (3FN3) V ¹⁷⁸⁰ , L ¹⁷⁸² ; (3FN4) I ¹⁸⁷² , Y ¹⁸⁷⁴ ; (3FN5) V ¹⁹⁶⁷ , V ¹⁹⁶⁹ ; (3FN6) I ²⁰⁶¹ , M ²⁰⁶³
Partly conserved glycines	94, Only when G is lost	(3FN2) G ¹⁷³⁰ , (3FN3) G ¹⁸²⁷ , (3FN6) G ²¹⁰⁴
Hydrophobics in F-strand	85, 87, 89	(3FN1) V ¹⁶²⁵ , V ¹⁶²⁷ , V ¹⁶²⁹ ; (3FN2) V ¹⁷²¹ , V ¹⁷²³ , A ¹⁷²⁵ ; (3FN3) I ¹⁸¹⁸ , A ¹⁸²⁰ , A ¹⁸²² ; (3FN4) F ¹⁹⁰⁷ , V ¹⁹⁰⁹ , V ¹⁹¹¹ ; (3FN5) I ²⁰⁰⁴ , V ²⁰⁰⁶ , L ²⁰⁰⁸ ; (3FN6) F ²⁰⁹⁵ , V ²⁰⁹⁷ , A ²⁰⁹⁹
Hydrophobics in E-strand	72, 74	(3FN1) NA, L ¹⁶¹⁴ ; (3FN2) NA, I ¹⁷¹⁰ ; (3FN3) NA, V ¹⁸⁰⁷ ; (3FN4) V ¹⁸⁹⁷ , V ¹⁸⁹⁹ ; (3FN5) Y ¹⁹⁹¹ , L ¹⁹⁹³ ; (3FN6) F ²⁰⁸² , I ²⁰⁸⁴
Trp-ladders		(3FN1) R ¹⁵⁹³ , W ¹⁶⁰⁰ , K ¹⁶²⁶ , H ¹⁶³⁶ ; (3FN2) E ¹⁶⁹⁰ , W ¹⁶⁹⁸ , R ¹⁷²² , W ¹⁷³⁴
Tail		
FANSHY		F ²¹⁷² , A ²¹⁷³ , N ²¹⁷⁴ , S ²¹⁷⁵ , H ²¹⁷⁶ , Y ²¹⁷⁷
Acidic		D ²¹⁹⁰ , D ²¹⁹¹ , L ²¹⁹² , G ²¹⁹³ , E ²¹⁹⁴ , D ²¹⁹⁵ , D ²¹⁹⁶ , E ²¹⁹⁷ , D ²¹⁹⁸
GGA		D ²²⁰⁷ , D ²²⁰⁸ , V ²²⁰⁹ , P ²²¹⁰ , M ²²¹¹ , V ²²¹² , I ²²¹³ , A ²²¹⁴

Rare variants (MAF<0.05%) in these positions are considered moderate priority. Variants correspond with the grey residues in **Figure 3**. NA: the specific domain does not have the prioritized variant. Underlined: Note that we observed a moderate priority variant leading to a W1563C substitution of a hydrophobic residue at position 13 in the 3Fn domain. This is a non-rare variant, with a non-neuro pop-max MAF of 6.7×10^{-4} (GnomAD) a REVEL score of 0.476 and a CADD score of 32. We observed no evidence for an effect on AD of this variant in the latest GWAS: OR=0.95 (95% CI 0.56-1.6), p=8.35x10⁻¹.

Table S6.

	variant type	percentile AD	age at onset (95%CI)	Δ age at onset vs WT (95% CI)	p value*
Fig 4A	SORL1 WT	50th	72 (72 - 73)	NA	N/A
		80th	82 (82 - 82)	NA	NA
	PTV	50th	62 (60 - 65)	-10 (12 - 8)	2.7x10⁻¹¹
		80th	73 (69 - 78)	-9 (13 - 4)	
	D2065V	50th	70 (68 - 72)	-2 (4 - 1)	7.1x10 ⁻¹
		80th	80.5 (78 - 84)	-1.5 (4 - 2)	
	E270K	50th	72 (71 - 73)	0 (1 - 0)	1
		80th	82 (81 - 83)	0 (1 - 1)	
A528T	50th	71 (70 - 72)	-1 (2 - 1)	1.7x10 ⁻¹	
	80th	81.5 (81 - 82)	-0.5 (1 - 0)		
other MAF >0.05%	50th	74 (73 - 74)	-2 (1 - 1)	1	
	80th	82 (82 - 83)	0 (0 - 1)		
Fig 4b	high priority missense	50th	63.8 (62 - 67)	-8.2 (10 - 6)	1.0x10 ⁻⁸
		80th	75 (72 - 78)	-7 (10 - 4)	
	Moderate priority missense	50th	72 (71 - 74)	0 (1 - 1)	1
		80th	81.1 (77 - 83.7)	-0.9 (5 - 1.7)	
Low priority missense	50th	70 (67 - 75)	2 (5 - 2)	1	
	80th	82 (80 - 84.9)	0 (2 - 2.9)		
No priority missense	50th	73 (71 - 74)	1 (1 - 1)	1	
	80th	81 (79 - 83)	1 (3 - 1)		
Fig 4C	YWTD-motif	50th	64 (48 - NA)	-8 (24 - NA)	2.6x10 ⁻³
		80th	65.1 (64 - NA)	-16.9 (18 - NA)	
	calcium cage	50th	60 (56 - NA)	-12 (16 - NA)	7.7x10 ⁻⁴
		80th	69 (61 - NA)	-13 (21 - NA)	
	VPS10 REVEL>50	50th	59.5 (56 - 78)	-12.5 (16 - 5)	1
		80th	75 (62 - NA)	-7 (20 - NA)	
	ONC in CR domain	50th	68 (63 - 74.3)	-4 (9 - 1.3)	1
		80th	77 (73 - 88)	-5 (9 - 6)	
	10CC	50th	67 (63 - 73)	-5 (9 - 0)	1
		80th	75 (71.3 - NA)	-7 (10.7 - NA)	
	Y391C VPS10p Loop1	50th	67.5 (60.1 - NA)	-4.5 (11.9 - NA)	1
		80th	76 (69 - NA)	-6 (13 - NA)	
	other HPV carriers	50th	60.5 (58 - 67)	11.5 (14 - 6)	1.8x10 ⁻²
		80th	76 (67 - 89.6)	-6 (15 - 7.6)	

The estimated age at onset per priority group or specific variant carrier group and the difference between the age at onset of carriers of WT *SORL1*. For all the different variant groups, both the age at onset when 50% and 80% of the variant carriers developed AD is given. *P value was calculated using a log-rank test.

Table S7. Differences in age at onset per priority category in context of APOE genotype.

	variant type	APOE genotype	percentile AD	age at onset (95%CI)	Δ age at onset vs WT (95% CI)	p value*
FIG 5	WT	APOE NEG	50th	75 (75 - 76)	NA	NA
			80th	85 (85 - 85.4)	NA	
		APOE HET	50th	70 (70 - 71)	NA	NA
			80th	78 (78 - 78)	NA	
		APOE HOM	50th	64 (63 - 64)	NA	NA
			80th	73 (72 - 73)	NA	
HPV	APOE NEG	50th	65.1 (62 - 72)	9.9 (13 - 4)	0.0196	
		80th	78 (75 - 86)	7 (10 - 0.6)		
	APOE HET	50th	63 (61 - 67)	7 (9 - 4)	0.000203	
		80th	73 (69 - 78)	5 (9 - 0)		
	APOE HOM	50th	57 (54 - NA)	7 (9 - NA)	0.0558	
		80th	61 (57 - NA)	12 (15 - NA)		
PTV	APOE NEG	50th	69 (65 - 74)	6 (10 - 2)	0.0273	
		80th	78 (73.3 - NA)	7 (11.7 - NA)		
	APOE HET	50th	61 (60 - 65)	9 (10 - 6)	4.03E-06	
		80th	69 (65 - 76)	9 (13 - 2)		
	APOE HOM	50th	60 (57 - NA)	4 (6 - NA)	0.0918	
		80th	62 (60 - NA)	11 (12 - NA)		
FIG S2	MPV	APOE NEG	50th	77 (72 - 82)	2 (3 - 6)	1
			80th	83 (81 - 88)	2 (4 - 2.6)	
	APOE HET	50th	71 (70 - 73)	1 (0 - 2)	1	
		80th	74.5 (73 - 87)	3.5 (5 - 9)		
	APOE HOM	50th	64 (51 - NA)	0 (12 - NA)	1	
		80th	81.1 (64 - NA)	8.1 (8 - NA)		
	LPV	APOE NEG	50th	78.2 (71 - 83)	3.2 (4 - 7)	1
			80th	84.7 (82 - NA)	0.3 (3 - NA)	
	APOE HET	50th	66 (63 - 71)	4 (7 - 0)	1	
		80th	74 (71 - 83)	4 (7 - 5)		
	APOE HOM	50th	72.8 (64 - NA)	8.8 (1 - NA)	1	
		80th	82 (72.8 - NA)	9 (0.8 - NA)		
NPV	APOE NEG	50th	76 (74 - 78)	1 (1 - 2)	1	
		80th	85 (82 - 87.7)	0 (3 - 2.3)		
	APOE HET	50th	72.5 (70 - 74)	2.5 (0 - 3)	1	
		80th	79 (77 - 81)	1 (1 - 3)		
	APOE HOM	50th	63.5 (60.3 - 67)	0.5 (2.7 - 3)	1	
		80th	73 (66 - NA)	0 (6 - NA)		

The estimated age at onset per priority group or specific variant carrier group, in context of its APOE-E4 genotype, and the difference between the age at onset of carriers of WT *SORL1*. For all the different variant groups, both the age at onset when 50% and 80% of the variant carriers developed AD is given. *P value was calculated using a log-rank test.

Study Cohorts

ADES-FR

This study was funded by grants from the Clinical Research Hospital Program from the French Ministry of Health (GMAJ, PHRC, 2008/067), the CNR-MAJ, the JPND PERADES, Equipe FRM DEQ20170336711, and Fondation Alzheimer (ECASCAD study). This research was supported by the Laboratory of Excellence GENMED (Medical Genomics) grant no. ANR-10-LABX-0013 managed by the National Research Agency (ANR) part of the Investment for the Future program. This work was also supported by Fondation Alzheimer, the Institut Pasteur de Lille, Inserm, the Haut-de-France and Lille Métropole Communauté Urbaine council, and the French government's LABEX (laboratory of excellence program investment for the future) DISTALZ grant (Development of Innovative Strategies for a Transdisciplinary approach to Alzheimer's disease). The 3C Study supports are listed on the Study Website (www.three-city-study.com).

AgeCoDe-UKBonn

The AgeCoDe cohort was funded in part by the German Federal Ministry of Education and Research (BMBF) (grants KNDD 01GI0710, 01GI0711, 01GI0712, 01GI0713, 01GI0714, 01GI0715, 01GI0716, 01ET1006B). Sequencing of AgeCoDe sample was in part funded by the German Research Foundation (DFG) grant RA 1971/6-1 to Alfredo Ramirez.

Barcelona- SPIN

Support for Jordi Clarimon provided by Maratón RTVE (Spain). Support for Oriol Dols provided by the Association for Frontotemporal Degeneration (Clinical Research Postdoctoral Fellowship, AFTD).

AC-EMC

Exome sequencing was funded by Alzheimer Nederland.

ERF

The ERF study as a part of EUROSPAN (European Special Populations Research Network) was supported by European Commission FP6 STRP grant number 018947 (LSHG-CT-2006-01947) and also received funding from the European Community's Seventh Framework Programme (FP7/2007-2013)/grant agreement HEALTH-F4- 2007-201413 by the European Commission under the programme "Quality of Life and Management of the Living Resources" of 5th Framework Programme (no. QLG2-CT-2002- 01254). High-throughput analysis of the ERF data was supported by a joint grant from the Netherlands Organization for Scientific Research and the Russian Foundation for Basic Research (NWO-RFBR 047.017.043).

Rotterdam Study

The generation and management of the exome sequencing data for the Rotterdam Study was executed by the Human Genotyping Facility of the Genetic Laboratory of the Department of Internal Medicine, Erasmus MC, the Netherlands. The Rotterdam Study is funded by Erasmus Medical Center and Erasmus University, Rotterdam, the Netherlands Organization for Health Research and Development (ZonMw), the Research Institute for Diseases in the Elderly (RIDE) (014-93-015; RIDE2), the Ministry of Education, Culture and Science, the Ministry for Health, Welfare and Sports, the European Commission (DG XII), and the municipality of Rotterdam. Genetic data sets are also supported by the Netherlands Organization of Scientific Research NWO Investments (175.010.2005.011, 911-03-012), the Genetic Laboratory of the Department of Internal Medicine, Erasmus MC, and the Netherlands Genomics Initiative (NGI)/Netherlands Organization for Scientific Research (NWO), the Netherlands Consortium for Healthy Aging (NCHA), project 050-060-810, and by a Complementation Project of the Biobanking and Biomolecular Research Infrastructure Netherlands (BBMRI-NL; www.bbmri.nl ; project number CP2010-41). We thank Mr. Pascal Arp, Ms. Mila Jhamai, Mr. and Marijn Verkerk, for their help in creating the RS-Exome Sequencing database.

ADC-Amsterdam

We thank all study participants and all personnel involved in data collection for the contributing studies. Research of Alzheimer center Amsterdam is part of the neurodegeneration research program of Amsterdam Neuroscience. Alzheimer Center Amsterdam is supported by Stichting Alzheimer Nederland and Stichting VUmc fonds. The clinical database structure was developed with funding from Stichting Dioraphte. This work was supported by Stichting Alzheimer Nederland (WE.09-2014-06, WE.05-2010-06); Stichting Dioraphte; Internationale Stichting Alzheimer Onderzoek (#11519); JPND-PERADES (ZonMw 733051022); Centralized Facility for Sequence to Phenotype analyses (ZonMW 9111025); Netherlands Consortium for Healthy Aging (NCHA 050-060-810); Biobanking and Biomolecular Research Infrastructure Netherlands (BBMRI-NL CP2010-41); Netherlands Genomics Initiative (NGI)/NWO. This study is further supported by ABOARD, a

public-private partnership receiving funding from ZonMW (#73305095007) and Health~Holland, Topsector Life Sciences & Health (PPP-allowance; #LSHM20106). This research is performed by using data from the Parelsnoer Institute an initiative of the Dutch Federation of University Medical Centres (www.parelsnoer.org).

100-plus Study

Cohort collection and exome sequencing of the 100-plus Study cohort was supported by Stichting Alzheimer Nederland (WE.09-2014-03); HorstingStuit Foundation, VUmc Foundation, and the Dioraphte Foundation (Project 17020403), Memorabel (ZonMW project number #733050814, #733050512) and Stichting VUmcFonds. Additional support is from ABOARD, a public-private partnership receiving funding from ZonMW (#73305095007) and Health~Holland, Topsector Life Sciences & Health (PPP-allowance; #LSHM20106).

EMIF-AD 90+

The EMIF-AD 90+ Study was funded by the EU/EFPIA Innovative Medicines Initiative Joint Undertaking EMIF grant agreement no. 115372.

CBC: Control Brain Consortium

This work was supported by the UK Dementia Research Institute which receives its funding from DRI Ltd, funded by the UK Medical Research Council, Alzheimer's Society and Alzheimer's Research UK, Medical Research Council (award number MR/N026004/1). Wellcome Trust Hardy (award number 202903/Z/16/Z), Dolby Family Fund; National Institute for Health Research University College London Hospitals Biomedical Research Centre; BRCNIHR Biomedical Research Centre at University College London Hospitals NHS Foundation Trust and University College London.

J. Hardy was supported by the Dolby Foundation and the JPND PERADES. J.B. and R.G were supported by the National Institute on Aging of the National Institutes of Health under Award Number R01AG067426. The content is solely the responsibility of the authors and does not necessarily represent the official views of the National Institutes of Health.

PERADES

We thank all individuals who participated in the study. We also want to express our gratitude to the MRC Centre Core Team for the laboratory support and the Advanced Research Computing at Cardiff University (ARCCA) for the computational support. Cardiff University was supported by the Medical Research Council. Cardiff University was also supported by the European Joint Programme for Neurodegenerative Disease, Alzheimer's Research UK, the Welsh Assembly Government, and a donation from the Moondance Charitable Foundation. Cardiff University acknowledges the support of the UK Dementia Research Institute, which receives its funding from UK DRI Ltd, funded by the UK Medical Research Council, Alzheimer's Society and Alzheimer's Research UK. Cambridge University acknowledges support from the MRC. The University of Southampton acknowledges support from the Alzheimer's Society. ARUK provided support to Nottingham University. Join Dementia Research (JDR) is funded by the Department of Health and delivered by the National Institute for Health Research in partnership with Alzheimer Scotland, Alzheimer's Research UK and Alzheimer's Society. IRCCS Santa Lucia Foundation acknowledges the Italian Ministry of Health for financial support (IMH_RC) of this study. The Centro de Biología de Molecular Severo Ochoa (CSIS-UAM), CIBERNED, Instituto de Investigación Sanitaria la Paz, University Hospital La Paz and the Universidad Autónoma de Madrid were supported by grants from the Ministerio de Educación y Ciencia and the Ministerio de Sanidad y Consumo (Instituto de Salud Carlos III), and an institutional grant of the Fundación Ramón Areces to the CMBSO. Thanks to I. Sastre and Dr A Martínez-García for DNA preparation, and Drs P Gil and P Coria for their recruitment efforts. Department of Neurology, University Hospital Mutua de Terrassa, Terrassa, Barcelona, Spain was supported by CIBERNED, Centro de Investigación Biomedica en Red de Enfermedades Neurodegenerativas, Instituto de Salud Carlos III, Madrid Spain and acknowledges Maria A Pastor (Department of Neurology, University of Navarra Medical School and Neuroimaging Laboratory, Center for Applied Medical Research, Pamplona, Spain), Manuel Seijo-Martinez (Department of Neurology, Hospital do Salnes, Pontevedra, Spain), Ramon Rene, Jordi Gascon and Jaume Campdelacreu (Department of Neurology, Hospital de Bellvitge, Barcelona, Spain) for providing DNA samples. Hospital de la Sant Pau, Universitat Autònoma de Spain acknowledges support from the Spanish Ministry of Economy and Competitiveness (grant number PI12/01311), and from Generalitat de Catalunya (2014SGR-235). The Santa Lucia Foundation and the Fondazione Ca' Granda IRCCS Ospedale Policlinico, Italy, acknowledge the Italian Ministry of Health (grant RC 10.11.12.13/A)

StEP-AD cohort

The Stanford Extreme Phenotypes in Alzheimer's Disease (StEP AD) Study is funded by the National Institutes of Health: R01AG060747 and AG047366

Knight-ADRC

NIH P50 AG05681, P01 AG03991, P01 AG026276, NIA U01 AG058922;

UCSF/NYGC/UAB

Funding for genomes sequenced at HudsonAlpha was generously provided by the Daniel Foundation of Alabama and donors to the HudsonAlpha Foundation Memory and Mobility Fund.

UCL-DRC EOAD

This work was supported by the Medical Research Council (UK), the Biomedical Research Centre at University College London Hospitals NHS Foundation Trust and charitable donations to the UCL Dementia Research Centre.

ADSP

The Alzheimer's Disease Sequencing Project (ADSP) is comprised of two Alzheimer's Disease (AD) genetics consortia and three National Human Genome Research Institute (NHGRI) funded Large Scale Sequencing and Analysis Centers (LSAC). The two AD genetics consortia are the Alzheimer's Disease Genetics Consortium (ADGC) funded by NIA (U01 AG032984), and the Cohorts for Heart and Aging Research in Genomic Epidemiology (CHARGE) funded by NIA (R01 AG033193), the National Heart, Lung, and Blood Institute (NHLBI), other National Institute of Health (NIH) institutes and other foreign governmental and non-governmental organizations. The Discovery Phase analysis of sequence data is supported through UF1AG047133 (to Drs. Schellenberg, Farrer, Pericak-Vance, Mayeux, and Haines); U01AG049505 to Dr. Seshadri; U01AG049506 to Dr. Boerwinkle; U01AG049507 to Dr. Wijsman; and U01AG049508 to Dr. Goate and the Discovery Extension Phase analysis is supported through U01AG052411 to Dr. Goate, U01AG052410 to Dr. Pericak-Vance and U01 AG052409 to Drs. Seshadri and Fornage, U54 AG052427 to Drs. Schellenberg and Wang, and R01 AG054060 to Dr Naj. The ADGC cohorts include: Adult Changes in Thought (ACT) (UO1 AG006781, UO1 HG004610, UO1 HG006375, UO1 HG008657), the Alzheimer's Disease Centers (ADC) (P30 AG019610, P30 AG013846, P50 AG008702, P50 AG025688, P50 AG047266, P30 AG010133, P50 AG005146, P50 AG005134, P50 AG016574, P50 AG005138, P30 AG008051, P30 AG013854, P30 AG008017, P30 AG010161, P50 AG047366, P30 AG010129, P50 AG016573, P50 AG016570, P50 AG005131, P50 AG023501, P30 AG035982, P30 AG028383, P30 AG010124, P50 AG005133, P50 AG005142, P30 AG012300, P50 AG005136, P50 AG033514, P50 AG005681, and P50 AG047270), the Chicago Health and Aging Project (CHAP) (R01 AG11101, RC4 AG039085, K23 AG030944), Indianapolis Ibadan (R01 AG009956, P30 AG010133), the Memory and Aging Project (MAP) (R01 AG17917), Mayo Clinic (MAYO) (R01 AG032990, U01 AG046139, R01 NS080820, RF1 AG051504, P50 AG016574), Mayo Parkinson's Disease controls (NS039764, NS071674, 5RC2HG005605), University of Miami (R01 AG027944, R01 AG028786, R01 AG019085, IIRG09133827, A2011048), the Multi-Institutional Research in Alzheimer's Genetic Epidemiology Study (MIRAGE) (R01 AG09029, R01 AG025259), the National Cell Repository for Alzheimer's Disease (NCRAD) (U24 AG21886), the National Institute on Aging Late Onset Alzheimer's Disease Family Study (NIA- LOAD) (R01 AG041797), the Religious Orders Study (ROS) (P30 AG10161, R01 AG15819), the Texas Alzheimer's Research and Care Consortium (TARCC) (funded by the Darrell K Royal Texas Alzheimer's Initiative), Vanderbilt University/Case Western Reserve University (VAN/CWRU) (R01 AG019757, R01 AG021547, R01 AG027944, R01 AG028786, P01 NS026630, and Alzheimer's Association), the Washington Heights-Inwood Columbia Aging Project (WHICAP) (RF1 AG054023), the University of Washington Families (VA Research Merit Grant, NIA: P50AG005136, R01AG041797, NINDS: R01NS069719), the Columbia University Hispanic Estudio Familiar de Influenza Genetica de Alzheimer (EFIGA) (RF1 AG015473), the University of Toronto (UT) (funded by Wellcome Trust, Medical Research Council, Canadian Institutes of Health Research), and Genetic Differences (GD) (R01 AG007584). The CHARGE cohorts are supported in part by National Heart, Lung, and Blood Institute (NHLBI) infrastructure grant HL105756 (Psaty), RC2HL102419 (Boerwinkle) and the neurology working group is supported by the National Institute on Aging (NIA) R01 grant AG033193.

This work was also supported by National Institute on Aging grants R01 AG048927 to Dr. Farrer, RF1 AG054080 to Dr. Beecham, U24 AG056270 to Dr. Mayeux, RF1 AG057519 to Dr. Farrer, U01 AG062602 to Dr. Farrer, R01 AG067501 to Dr. Mayeux, and U19 AG068753 to Dr. Farrer.

The CHARGE cohorts participating in the ADSP include the following: Austrian Stroke Prevention Study (ASPS), ASPS-Family study, and the Prospective Dementia Registry-Austria (ASPS/PRODEM-Aus), the Atherosclerosis Risk in Communities (ARIC) Study, the Cardiovascular Health Study (CHS), the Erasmus

Rucphen Family Study (ERF), the Framingham Heart Study (FHS), and the Rotterdam Study (RS). ASPS is funded by the Austrian Science Fond (FWF) grant number P20545-P05 and P13180 and the Medical University of Graz. The ASPS-Fam is funded by the Austrian Science Fund (FWF) project I904), the EU Joint Programme - Neurodegenerative Disease Research (JPND) in frame of the BRIDGET project (Austria, Ministry of Science) and the Medical University of Graz and the Steiermärkische Krankenanstalten Gesellschaft. PRODEM-Austria is supported by the Austrian Research Promotion agency (FFG) (Project No. 827462) and by the Austrian National Bank (Anniversary Fund, project 15435. ARIC research is carried out as a collaborative study supported by NHLBI contracts (HHSN268201100005C, HHSN268201100006C, HHSN268201100007C, HHSN268201100008C, HHSN268201100009C, HHSN268201100010C, HHSN268201100011C, and HHSN268201100012C). Neurocognitive data in ARIC is collected by U01 2U01HL096812, 2U01HL096814, 2U01HL096899, 2U01HL096902, 2U01HL096917 from the NIH (NHLBI, NINDS, NIA and NIDCD), and with previous brain MRI examinations funded by R01-HL70825 from the NHLBI. CHS research was supported by contracts HHSN268201200036C, HHSN268200800007C, N01HC55222, N01HC85079, N01HC85080, N01HC85081, N01HC85082, N01HC85083, N01HC85086, and grants U01HL080295 and U01HL130114 from the NHLBI with additional contribution from the National Institute of Neurological Disorders and Stroke (NINDS). Additional support was provided by R01AG023629, R01AG15928, and R01AG20098 from the NIA. FHS research is supported by NHLBI contracts N01-HC-25195 and HHSN268201500001I. This study was also supported by additional grants from the NIA (R01s AG054076, AG049607 and AG033040 and NINDS (R01 NS017950). The ERF study as a part of EUROSPAN (European Special Populations Research Network) was supported by European Commission FP6 STRP grant number 018947 (LSHG-CT-2006-01947) and also received funding from the European Community's Seventh Framework Programme (FP7/2007-2013)/grant agreement HEALTH-F4- 2007-201413 by the European Commission under the programme "Quality of Life and Management of the Living Resources" of 5th Framework Programme (no. QLG2-CT-2002- 01254). High-throughput analysis of the ERF data was supported by a joint grant from the Netherlands Organization for Scientific Research and the Russian Foundation for Basic Research (NWO-RFBR 047.017.043). The Rotterdam Study is funded by Erasmus Medical Center and Erasmus University, Rotterdam, the Netherlands Organization for Health Research and Development (ZonMw), the Research Institute for Diseases in the Elderly (RIDE), the Ministry of Education, Culture and Science, the Ministry for Health, Welfare and Sports, the European Commission (DG XII), and the municipality of Rotterdam. Genetic data sets are also supported by the Netherlands Organization of Scientific Research NWO Investments (175.010.2005.011, 911-03-012), the Genetic Laboratory of the Department of Internal Medicine, Erasmus MC, the Research Institute for Diseases in the Elderly (014-93-015; RIDE2), and the Netherlands Genomics Initiative (NGI)/Netherlands Organization for Scientific Research (NWO) Netherlands Consortium for Healthy Aging (NCHA), project 050-060-810. All studies are grateful to their participants, faculty and staff. The content of these manuscripts is solely the responsibility of the authors and does not necessarily represent the official views of the National Institutes of Health or the U.S. Department of Health and Human Services.

The four LSACs are: the Human Genome Sequencing Center at the Baylor College of Medicine (U54 HG003273), the Broad Institute Genome Center (U54HG003067), The American Genome Center at the Uniformed Services University of the Health Sciences (U01AG057659), and the Washington University Genome Institute (U54HG003079).

Biological samples and associated phenotypic data used in primary data analyses were stored at Study Investigators institutions, and at the National Cell Repository for Alzheimer's Disease (NCRAD, U24AG021886) at Indiana University funded by NIA. Associated Phenotypic Data used in primary and secondary data analyses were provided by Study Investigators, the NIA funded Alzheimer's Disease Centers (ADCs), and the National Alzheimer's Coordinating Center (NACC, U01AG016976) and the National Institute on Aging Genetics of Alzheimer's Disease Data Storage Site (NIAGADS, U24AG041689) at the University of Pennsylvania, funded by NIA This research was supported in part by the Intramural Research Program of the National Institutes of health, National Library of Medicine. Contributors to the Genetic Analysis Data included Study Investigators on projects that were individually funded by NIA, and other NIH institutes, and by private U.S. organizations, or foreign governmental or nongovernmental organizations.

Data collection and sharing for this project was funded by the Alzheimer's Disease Neuroimaging Initiative (ADNI) (National Institutes of Health Grant U01 AG024904) and DOD ADNI (Department of Defense award number W81XWH-12-2-0012). ADNI is funded by the National Institute on Aging, the National Institute of Biomedical Imaging and Bioengineering, and through generous contributions from the following: AbbVie, Alzheimer's Association; Alzheimer's Drug Discovery Foundation; Araclon Biotech; BioClinica, Inc.; Biogen; Bristol-Myers Squibb Company; CereSpir, Inc.; Cogstate; Eisai Inc.; Elan Pharmaceuticals, Inc.; Eli Lilly and Company; EuroImmun; F. Hoffmann-La Roche Ltd and its affiliated company Genentech, Inc.; Fujirebio; GE Healthcare; IXICO Ltd.; Janssen Alzheimer Immunotherapy Research & Development, LLC.; Johnson &

Johnson Pharmaceutical Research & Development LLC.; Lumosity; Lundbeck; Merck & Co., Inc.; Meso Scale Diagnostics, LLC.; NeuroRx Research; Neurotrack Technologies; Novartis Pharmaceuticals Corporation; Pfizer Inc.; Piramal Imaging; Servier; Takeda Pharmaceutical Company; and Transition Therapeutics. The Canadian Institutes of Health Research is providing funds to support ADNI clinical sites in Canada. Private sector contributions are facilitated by the Foundation for the National Institutes of Health (www.fnih.org). The grantee organization is the Northern California Institute for Research and Education, and the study is coordinated by the Alzheimer's Therapeutic Research Institute at the University of Southern California. ADNI data are disseminated by the Laboratory for Neuro Imaging at the University of Southern California.