

Healthcare in England was affected by the COVID-19 pandemic across the pancreatic cancer pathway: a cohort study using OpenSAFELY-TPP

Agnieszka Lemanska^{1*}, Colm Andrews², Louis Fisher², Seb Bacon², Adam Frampton^{3,4}, Amir Mehrkar², Peter Inglesby², Simon Davy², Keith J Roberts⁵, Praveetha Patalay⁶, Ben Goldacre², Brian MacKenna², The OpenSAFELY Collaborative[‡], Alex Walker²

¹Faculty of Health and Medical Sciences, University of Surrey, Guildford, UK

²Bennett Institute for Applied Data Science, Nuffield Department of Primary Care Health Sciences, University of Oxford, Oxford, UK

³Oncology Section, Surrey Cancer Research Institute, Department of Clinical and Experimental Medicine, University of Surrey, Guildford, UK

⁴HPB Surgical Unit, Royal Surrey NHS Foundation Trust, Guildford, UK

⁵Institute of Immunology and Immunotherapy, University of Birmingham, Birmingham, UK

⁶Faculty of Population Health Sciences, University College London, London, UK

[‡]Membership of the OpenSAFELY Collaborative is provided in the Acknowledgments Section

[*a.lemanska@surrey.ac.uk](mailto:a.lemanska@surrey.ac.uk)

Abstract

Background

Healthcare across all sectors, in the UK and globally, was negatively affected by the COVID-19 pandemic. We analysed healthcare services delivered to people with pancreatic cancer from January 2015 to March 2023 to investigate the effect of the COVID-19 pandemic.

Methods

With the approval of NHS England, and drawing from a nationally representative OpenSAFELY-TPP dataset of 24 million patients (over 40% of the English population), we undertook a cohort study of people diagnosed with pancreatic cancer. We queried electronic healthcare records for information on the provision of healthcare services across the pancreatic cancer pathway. To estimate the effect of the COVID-19 pandemic, we predicted the rates of healthcare services if the pandemic had not happened. We used generalised linear models (GLM) and the pre-pandemic data from January 2015 to February 2020 to predict rates in March 2020 to March 2023. The 95% confidence intervals of the predicted values were used to estimate the significance of the difference between the predicted and observed rates.

Results

The rate of pancreatic cancer and diabetes diagnoses in the cohort was not affected by the pandemic. There were 26,840 people diagnosed with pancreatic cancer from January 2015 to March 2023. The mean age at diagnosis was 72 (± 11 SD), 48% of people were female, 95% were of White ethnicity and 40% were diagnosed with diabetes. We found a reduction in surgical resections by 25% to 28% during the pandemic. In addition, 20%, 10% and 4% fewer people received BMI, HbA1c and liver function tests respectively before they were diagnosed with pancreatic cancer. There was no impact of the pandemic on the number of people making contact with primary care, but the number of contacts increased on average by 1 to 2 per person amongst those who made contact. Reporting

of jaundice decreased by 28%, but recovered within twelve months into the pandemic. Emergency department visits, hospital admissions and deaths were not affected.

Conclusions

The pandemic affected healthcare in England across the pancreatic cancer pathway. Positive lessons could be learnt from the services that were resilient and those that recovered quickly. The reductions in healthcare experienced by people with cancer have the potential to lead to worse outcomes. Current efforts should focus on addressing the unmet needs of people with cancer.

Funding

This work was jointly funded by the Wellcome Trust (222097/Z/20/Z); MRC (MR/V015757/1, MC_PC-20059, MR/W016729/1); NIHR (NIHR135559, COV-LT2-0073), and Health Data Research UK (HDRUK2021.000, 2021.0157). This work was funded by Medical Research Council (MRC) grant reference MR/W021390/1 as part of the postdoctoral fellowship awarded to AL and undertaken at the Bennett Institute, University of Oxford. The views expressed are those of the authors and not necessarily those of the NIHR, NHS England, UK Health Security Agency (UKHSA) or the Department of Health and Social Care. Funders had no role in the study design, collection, analysis, and interpretation of data; in the writing of the report; and in the decision to submit the article for publication.

Keywords: Pancreatic cancer, healthcare, cancer care, COVID-19

Introduction

Cancer services were already overstretched before the COVID-19 pandemic [1, 2]. With the widespread effect on healthcare, the pandemic further exacerbated the cancer-related healthcare crisis [3-14]. During the pandemic, the resources, and the attention in healthcare systems globally, shifted towards preventing and managing COVID-19 [15, 16]. Access to the non-COVID-19-related healthcare changed [17-19], waiting times increased [20, 21], and cancer pathways including treatment standards were adapted [3-10]. In addition, patients' healthcare-seeking behaviour changed as people adopted social distancing (limiting face to face contact) and shielding to protect themselves and healthcare systems from unprecedented pressures of the pandemic [22-24]. People were cautious and were actively taking measures to preserve healthcare and limit the spread of COVID-19 [25].

People affected by cancer were particularly vulnerable to the changes brought by the pandemic [26]. This is because they rely on healthcare. In pancreatic cancer, the challenging diagnosis (due to non-specific symptoms) and rapid progression, require an efficient system [27]. Weight loss, hyperglycaemia, diabetes, and bile duct obstruction often occur as complications of pancreatic cancer [28]. Therefore, timely assessments of body mass index (BMI), glycated haemoglobin (HbA1c) and liver function can support early diagnosis [29] and monitoring of the progression [30]. However, the negative effect of the COVID-19 pandemic resulted in delays and missed opportunities throughout the cancer pathway, which in turn affected patient outcomes including survival [6-9, 11-13, 20, 31].

To mitigate the negative effect of the COVID-19 pandemic and support patients and healthcare systems in recovery, it is important to provide the assessment of the scale of the impact. We therefore set out to investigate the effect of the pandemic on pancreatic cancer services in England. The objectives were to:

1. Access nationally representative data on healthcare services across the pancreatic cancer pathway. This was to investigate the effect of the COVID-19 pandemic on the range of services, from diagnostics to survivorship, as well as different healthcare settings including primary and secondary care.
2. Compare the quantity of healthcare that would be delivered if the pandemic had not happened (predicted based on the pre-pandemic trends) to that actually delivered (observed) during the pandemic. This was to assess the effect of the COVID-19 pandemic using the significance of the difference between the observed and predicted rates.
3. Access near-real time longitudinal data (up to March 2023) and analyse trends over time. This was to investigate patterns in the recovery of services from the effect of the pandemic.

Methods

Study design

This was a cohort study set in England, UK. We analysed electronic healthcare records (EHR) of adults diagnosed with pancreatic cancer between 1st January 2015 and 31st March 2023.

Data Source: OpenSAFELY-TPP dataset

We used the OpenSAFELY-TPP dataset comprising 24 million people currently registered with primary care practices that use TPP's SystemOne software (covering over 40% of England's population). This dataset was used for this project because of its unprecedented size, because it is nationally representative [32], and because it enables access to primary care records linked to hospital records and mortality data. Linked pseudonymized EHRs included coded diagnoses, medications and physiological parameters. No free text data were available.

Primary care records managed by TPP were linked to Secondary Uses Service (SUS) hospital procedures and admissions data, and to Office of National Statistics (ONS) death data through OpenSAFELY. OpenSAFELY is an analytics platform created by our team on behalf of NHS England to address urgent COVID-19 research questions. It provides a secure software interface allowing the analysis of pseudonymized primary care records of patients from England in near real-time within the TPP's highly secure data centre, avoiding the need for large volumes of patient data to be transferred off-site. This, in addition to other technical and organisational controls, minimises any risk of patient re-identification. Further details can be found in the information governance section of this manuscript and on opensafely.org.

Study population

The study population was derived from the 24 million people in the OpenSAFELY-TPP dataset. Participants were adults diagnosed with pancreatic cancer between 1st January 2015 and 31st March 2023. Data on healthcare services delivered to study participants were extracted and trends over time were analysed.

Outcome measures

The information on new pancreatic cancer diagnosis (incidence) was extracted. This was defined as the first time that a clinical code for pancreatic cancer was entered in a primary care record. The age of participants at diagnosis, their gender and ethnicity were also extracted. To assess the effect of the pandemic on pancreatic cancer diagnosis, numbers of people diagnosed with pancreatic cancer were presented as monthly rates per 100,000 adults registered with TPP practices.

To analyse the effect of the COVID-19 pandemic on pancreatic cancer-related services, the episodes of care were extracted from 6 months before to 6 months after pancreatic cancer diagnosis (apart from the diabetes diagnosis which was extracted at any time). The date of pancreatic cancer diagnosis served as an index date for each participant. Table 1 presents which healthcare services were included in the study, and the time windows for which they were assessed.

Data on healthcare services were assessed as monthly rates of people who received a healthcare service (\geq one episode) per 100 people diagnosed. Some services were assessed as monthly rates (numbers) of episodes per one person diagnosed (or for primary care contacts this was per person in contact).

Table 1. Healthcare services (contacts, appointments, diagnosis, diagnostic tests, routine assessments) and associated time windows for which they were extracted. Pancreatic cancer diagnosis was an index date. Counts of healthcare services were presented as either monthly rates of people who were diagnosed that month and received a healthcare service within the time window per 100 people diagnosed that month, or number of episodes received within the time window per person diagnosed each month (except for the number of primary care contacts which was analysed per person in contact).

Healthcare service	Time window	
	Six months before pancreatic cancer diagnosis	Six months after pancreatic cancer diagnosis
Primary care		
Diabetes diagnoses		Any time
Contacts with primary care (these include all contact events, not only healthcare appointments)	✓	✓
BMI assessments	✓	✓
HbA1c assessments	✓	✓
Liver function assessments	✓	✓
Reporting of jaundice	✓	✗
Pancreatic enzyme supplementation	✗	✓
Secondary care		
Abdominal imaging	✓	✗
Pancreatic cancer resection (surgery)	✗	✓
Emergency department visits	✓	✓
Hospital admissions	✓	✓
National mortality register		
Death (any cause)	✗	✓

Primary care data were extracted using the systematised nomenclature of medicine clinical terminology (SNOMED CT) system. Medications data, namely pancreatic enzyme supplements, were extracted using the list compiled based on the British National Formulary (BNF, [bnf.org](https://www.bnf.org)) and coded using NHS Dictionary of Medicines and Devices codes. Hospital procedures data were queried using the Office of Population Censuses and Surveys (OPCS-4) coding system.

Study dates

The study period was from 1st Jan 2015 to 31st March 2023. In the UK, the pandemic-related restrictions started in March 2020 with the first national lockdown in England commencing on 26th March 2020, and the two consecutive lockdowns starting 5th November 2020 and 6th January 2021. From 8th March 2021, governments in the UK began a phased exit from the third and final lockdown. Therefore, to analyse the effect of the COVID-19 pandemic, three separate periods were adopted. The period before the pandemic was from 1st January 2015 to 29th February 2020. The lockdown period was from 1st March 2020 to 31st March 2021. The recovery period (the period of easing restrictions) was from 1st April 2021 to 31st March 2023. The recovery period was censored six months earlier, by 30th September 2022, for the outcomes that assessed healthcare service six months after pancreatic cancer diagnosis. This was to ensure the completeness of the six-months follow-up data.

Primary care data were available for the whole study period. However, secondary care data were only available from January 2017 onwards. Emergency department visits as well as ONS mortality data were available from January 2019 onwards.

Statistical analysis

Counts of patients and healthcare services were rounded to the nearest 5 to comply with the rules for preventing statistical disclosure. The observed monthly rates were visualised between 1st January 2015 (or as available) and 31st March 2023 (or 30th September 2022 for the outcomes that assessed healthcare within six months after pancreatic cancer diagnosis).

Data from before the pandemic were used to predict monthly rates of healthcare services that would be expected during the lockdown and recovery periods if the pandemic had not happened. Generalised linear models (GLM) were used to model monthly rates. A separate model was fitted for each healthcare service. An interrupted time series approach was used to predict the expected rates in the lockdown and recovery periods. To account for seasonality in data, calendar months were fitted as a categorical variable. To allow for change in healthcare services over time, the time was fitted as a continuous variable. Two dummy variables for the two COVID-19 periods were included to allow trends and slopes to vary in these periods separately.

The differences between the observed and predicted rates were calculated and presented as the percentage change from the predicted. The 95% confidence intervals of the predicted values were used to estimate the significance of the difference between the predicted and observed values (to estimate the effect of the COVID-19 pandemic). The average values across periods (rather than any specific points in time) were used to estimate the overall effect in each period.

Software and reproducibility

Data management was performed in SQL and Python version 3.8. Statistical analyses were performed in R version 4.0.2 using packages MASS for GLM and ggplot2 for data visualisation. The REporting of studies Conducted using Observational Routinely-collected health Data (RECORD) guidelines were followed [33]. Software for data analysis and code lists used to define outcome measures are available from github.com/opensafely/Pancreatic_cancer.

Results

Study population and participants

In total, there were 26,840 people diagnosed with pancreatic cancer in the study period (study participants). On average, there were 267 (± 24 SD) pancreatic cancer diagnosis each month. The mean age at pancreatic cancer diagnosis was 72 (± 11 SD). 12,965 (48%) participants were females and 13,875 (52%) were males. 18,760 participants were of white ethnicity (95% for which ethnicity data were recorded). Ethnicity data were missing for 7,040 (26%) participants. 10,785 (40%) of people with pancreatic cancer received diagnosis of diabetes at some point before or after their cancer diagnosis.

The effect of COVID-19 on pancreatic cancer and diabetes diagnosis

We did not observe an effect of the COVID-19 pandemic on the number of people recorded as diagnosed with pancreatic cancer (Figure 1A). For every 100,000 registered people, there was 1 pancreatic cancer diagnosis a month in the lockdown and in the recovery period. This equated to the predicted rate of 1 (95% CI: 1 to 2) in both periods of the pandemic (Table 2). We also did not observe an effect on diabetes diagnosis in this cohort (Figure 1B). In both periods of the pandemic, 41% of people received diabetes diagnosis. The predicted rates per 100 diagnosed people were 41 (95% CI: 38 to 44) in the lockdown period and 42 (95% CI: 39 to 45) in the recovery period.

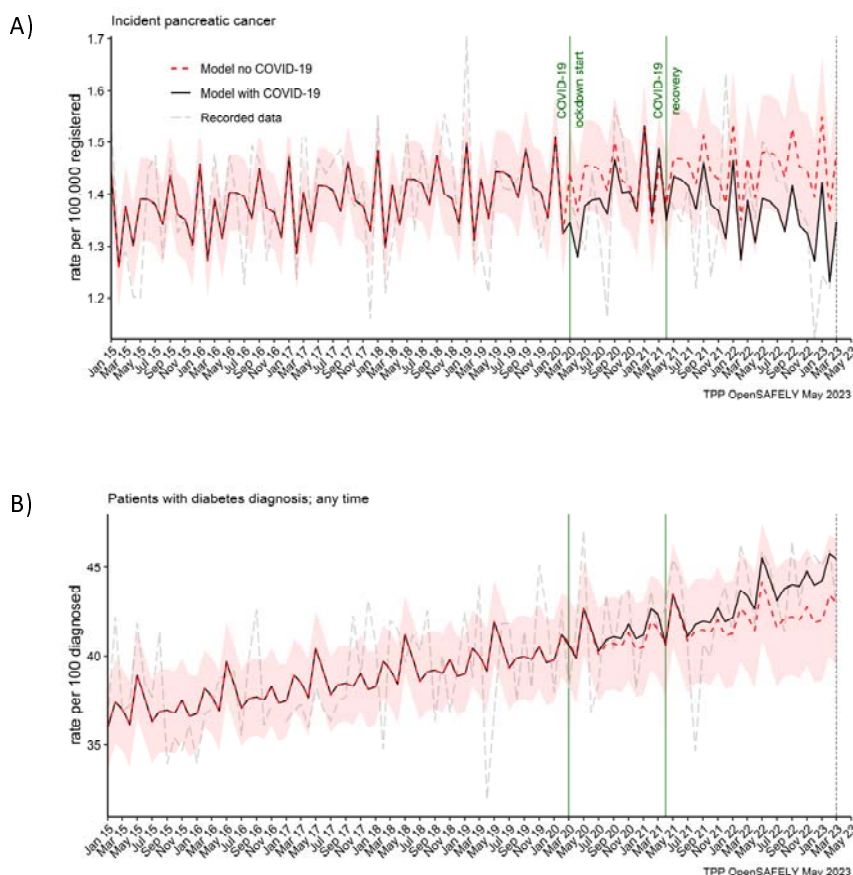


Figure 1. Observed and predicted monthly rates (as if the COVID-19 pandemic had not happened) for A) pancreatic cancer diagnosis per 100,000 registered patients, and B) diabetes diagnosis per 100 people with pancreatic cancer.

Table 2. Statistical significance of the differences between the observed and predicted monthly rates of healthcare services with 95% confidence intervals. The pandemic values were predicted based on the pre-pandemic period from 1st January 2015 to 29th February 2020. The lockdown period was from 1st March 2020 to 31st March 2021. The recovery period (the period of easing restrictions) was from 1st April 2021 to 31st March 2023 (or to 30th September 2022 for healthcare services that were evaluated six months after diagnosis). The values are the average monthly rates over the period. Unless otherwise specified, the rates are per 100 people diagnosed with pancreatic cancer. *Indicates statistical significance with 95% confidence levels.

	Lockdown period: 1 st March 2020 to 31 st March 2021 (13 months)			Recovery period: 1 st April 2021 to 31 st March 2023 (24 months) or 30 th September 2022 (18 months for services evaluated six months after diagnosis)		
	Predicted rates (95% CI)	Observed rates	Difference	Predicted rates (95% CI)	Observed rates	Difference
Pancreatic cancer diagnosis (rate per 100,000 people registered)	1 (1 to 2)	1	0 (2%)	1 (1 to 2)	1	0 (6%)
Diabetes diagnosis any time before or after pancreatic cancer diagnosis	41 (38 to 44)	41	0 (1%)	42 (39 to 45)	43	1 (3%)
People with ≥ 1 primary care contacts within six months before pancreatic cancer diagnosis	92 (90 to 94)	91	-1 (1%)	97 (95 to 99)	95	-2 (3%) *
People with ≥ 1 primary care contacts within six months after pancreatic cancer diagnosis	87 (84 to 89)	88	2 (2%)	91 (89 to 94)	91	0 (0%)
Number of primary care contacts within six months before pancreatic cancer diagnosis (per person in contact)	11 (10 to 12)	12	1 (8%) *	11 (10 to 12)	13	2 (15%) *
Number of primary care contacts within six months after pancreatic cancer diagnosis (per person in contact)	11 (10 to 11)	13	2 (18%) *	11 (10 to 12)	12	2 (14%) *
People with ≥ 1 BMI assessments within six months before pancreatic cancer diagnosis	55 (52 to 59)	44	-11 (20%) *	57 (53 to 61)	49	-8 (14%) *
People with ≥ 1 BMI assessments within six months after pancreatic cancer diagnosis	31 (28 to 34)	25	-6 (18%) *	33 (30 to 36)	31	-2 (7%)
People with ≥ 1 HbA1c assessments within six months before pancreatic cancer diagnosis	60 (57 to 64)	55	-6 (10%) *	66 (62 to 70)	61	-5 (7%) *
People with ≥ 1 HbA1c assessments within six months after pancreatic cancer diagnosis	19 (16 to 21)	16	-3 (13%)	20 (17 to 22)	18	-1 (7%)
People with ≥ 1 liver function assessments within six months before pancreatic cancer diagnosis	80 (77 to 82)	76	-3 (4%) *	80 (77 to 83)	78	-2 (3%)
People with ≥ 1 liver function assessments within six months	34 (31 to 36)	33	-1 (2%)	33 (30 to 36)	33	1 (2%)

after pancreatic cancer diagnosis						
People reporting jaundice ≥ 1 times within six months before pancreatic cancer diagnosis	10 (9 to 11)	7	-3 (28%) *	10 (9 to 12)	9	-1 (11%)
People receiving abdominal scan ≥ 1 times within six months before pancreatic cancer diagnosis	30 (27 to 33)	29	-2 (5%)	30 (26 to 34)	29	0 (2%)
People receiving ≥ 1 prescriptions for enzyme supplements within six months after pancreatic cancer diagnosis	55 (52 to 58)	54	-2 (3%)	60 (56 to 63)	57	-3 (5%)
People receiving pancreatic cancer resection within six months after pancreatic cancer diagnosis	8 (6 to 10)	6	-2 (25%) *	9 (7 to 11)	6	-2 (28%) *
Number of emergency department visits within six months before pancreatic cancer diagnosis (<u>per person diagnosed</u>)	1 (1 to 1)	1	0 (9%)	1 (0 to 1)	1	0 (11%)
Number of emergency department visits within six months after pancreatic cancer diagnosis (<u>per person diagnosed</u>)	1 (0 to 1)	1	0 (1%)	1 (0 to 1)	1	0 (5%)
Number of hospital admissions within six months before pancreatic cancer diagnosis (<u>per person diagnosed</u>)	2 (2 to 2)	2	0 (7%)	2 (1 to 2)	2	0 (3%)
Number of hospital admissions within six months after pancreatic cancer diagnosis (<u>per person diagnosed</u>)	4 (4 to 5)	4	0 (2%)	4 (3 to 5)	4	0 (8%)
People who died within six months after pancreatic cancer diagnosis	61 (53 to 69)	56	-5 (8%)	68 (53 to 82)	56	-12 (17%)

Primary care contacts

The number of people with pancreatic cancer who contacted primary care before and after their diagnosis, increased over time, from 70% and 80% (respectively) in 2015 to over 90% by 2022 (Figure 2A and B). This trend was not affected by the pandemic (Table 2). We observed that 91% (predicted 92% [95% CI: 90 to 94]) of people diagnosed in the lockdown period, contacted (≥ 1 contact) primary care within six months before they were diagnosed, and 88% (predicted 87% [95% CI: 84 to 89]) contacted primary care within six months after diagnosis. In the recovery period this was 95% (predicted 97% [95% CI: 95 to 99]) and 91% (predicted 91% [95% CI: 89 to 94]) respectively.

However, there was a difference in the number of primary care contacts recorded per person. People diagnosed in the lockdown period had on average 1 contact more than predicted (12 vs 11 [95% CI: 10 to 12]) within six months before the diagnosis and 2 contacts more than predicted (13 vs 11 [95% CI: 10 to 11]) within six months after they were diagnosed. This was similar for people diagnosed in the recovery period. For these people, there were 2 more contacts observed than predicted (13 vs 11 [95% CI: 10 to 12]) before the diagnosis and 2 (12 vs 11 [95% CI: 10 to 12]) after the diagnosis (Table 2). Any discrepancies in sums are due to rounding. In addition, it is important to note that contacts with primary care included all the contact events (all reasons and purposes), not only healthcare appointments.

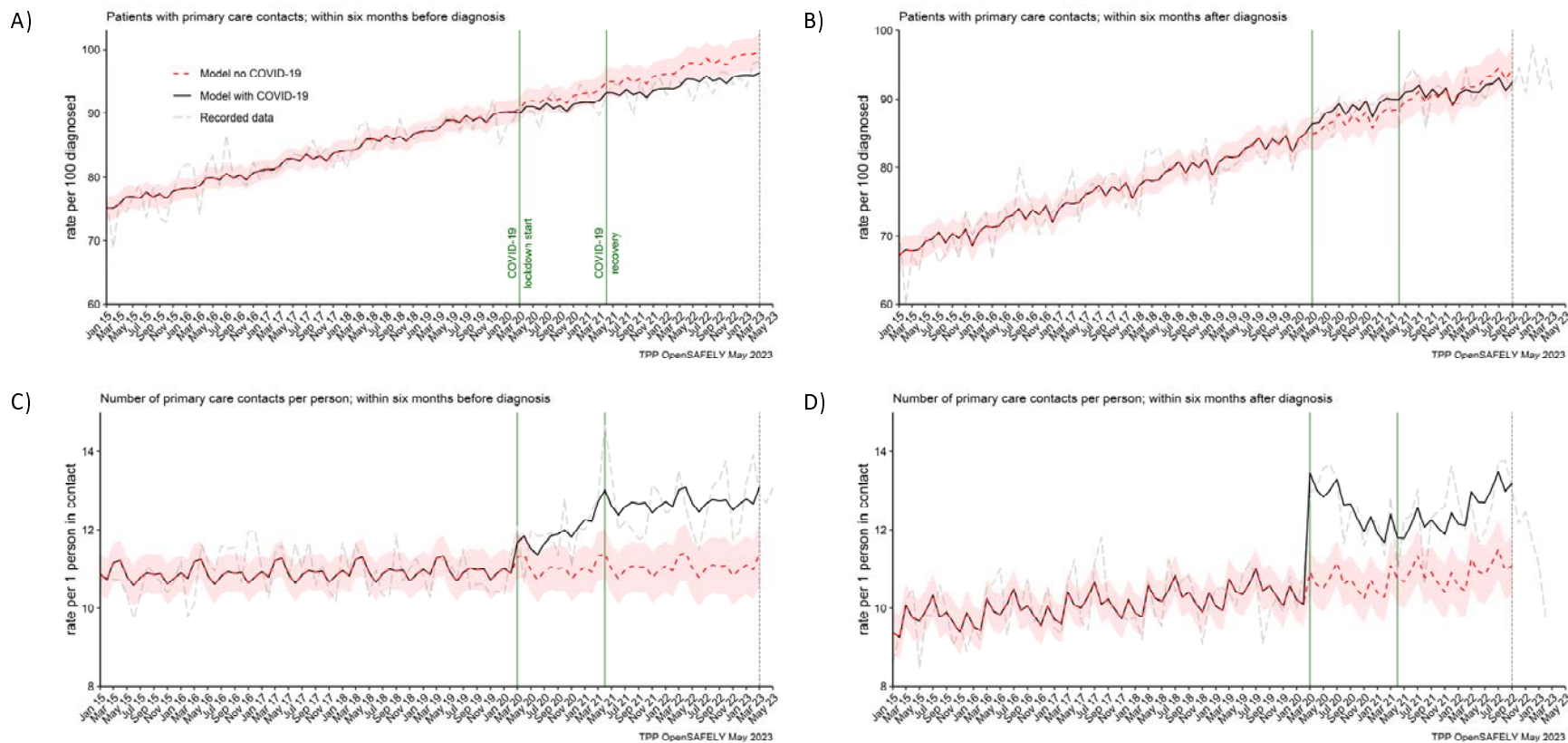


Figure 2. The observed and predicted (as if the COVID-19 pandemic had not happened) monthly rates of A) people in contact with primary care before pancreatic cancer diagnosis, B) people in contact with primary care after pancreatic cancer diagnosis. Rates are per 100 people diagnosed with pancreatic cancer. C) and D) are monthly rates of primary care contacts per person before and after pancreatic cancer diagnosis. Contacts with primary care include all contact events (all reasons and purposes), not only healthcare appointments.

BMI, HbA1c and liver function assessments

In both periods of the pandemic, we observed reductions in numbers of people receiving BMI, HbA1c and liver function assessments before they were diagnosed with pancreatic cancer (Figure 3). For BMI, these were 20% and 14% less people than predicted received at least one assessment in the lockdown and recovery periods respectively. For HbA1c these were 10% and 8% reductions and for liver function these were 4% and 3% reductions respectively (Table 2). Except for BMI, we did not observe reductions in numbers of people receiving these assessments after they were diagnosed with cancer.

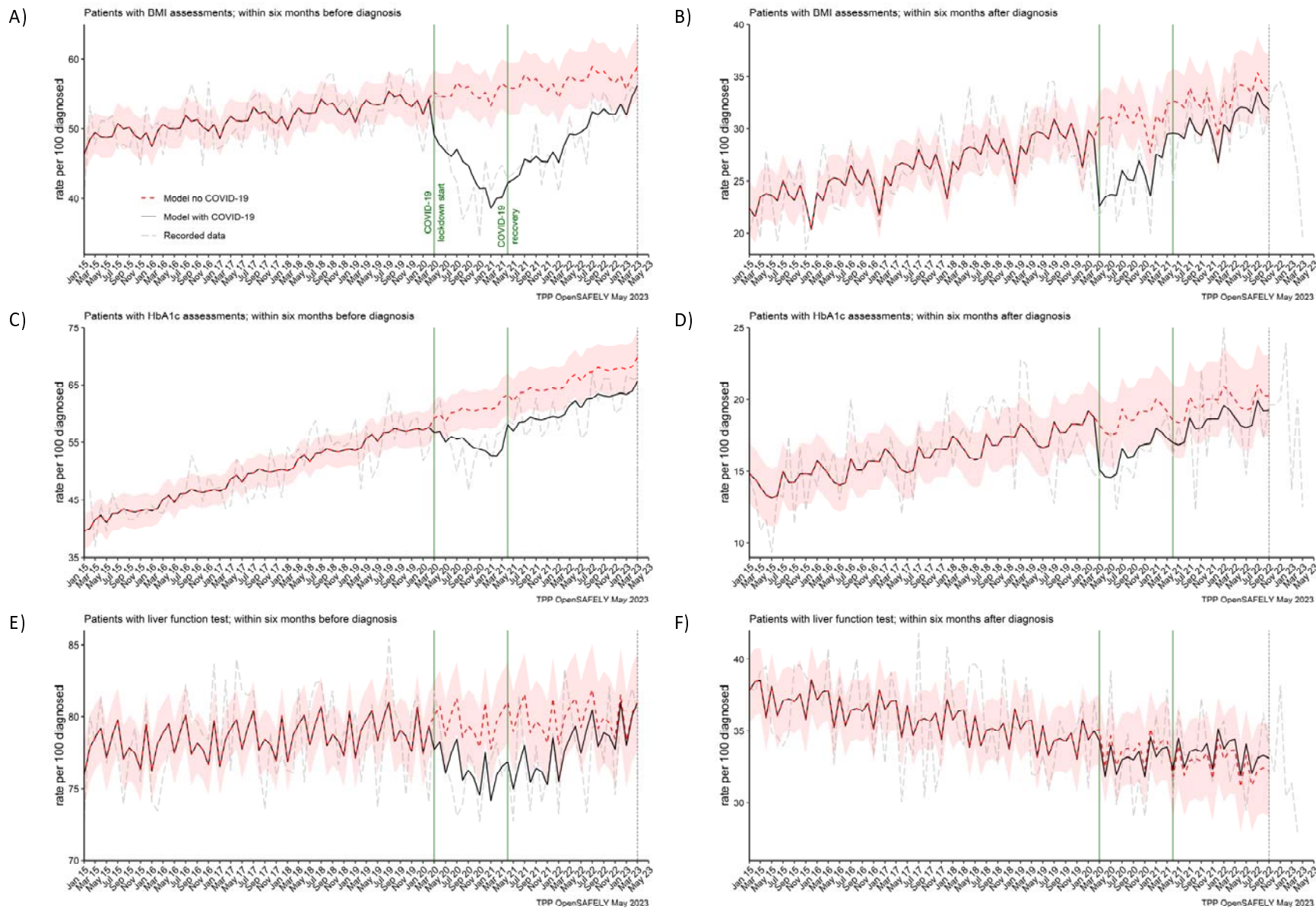


Figure 3. The observed and predicted (if the COVID-19 pandemic had not happened) monthly rates of A) and B) people with at least one BMI assessment before and after pancreatic cancer diagnosis, C) and D) people with at least one HbA1c assessment before and after pancreatic cancer diagnosis, and E) and F) people with at least one liver function assessment before and after pancreatic cancer diagnosis. All rates are per 100 people diagnosed with pancreatic cancer.

Symptoms and treatments

The reporting of jaundice in primary care and abdominal imaging in secondary care were reduced for people diagnosed in the lockdown period. For every 100 people diagnosed in the lockdown period, 3 (28%) less people (7 vs 10 [95% CI: 9 to 11] predicted) reported jaundice before they were diagnosed (Table 2). For abdominal imaging the observed in the lockdown period average reduction of 5% (29 vs 30 [95% CI: 27 to 33] predicted) did not reach statistical significance because it was the most pronounced only in the first 6 months of the lockdown period (Figure 4B). The reductions in both services were transient. They recovered to the pre-pandemic levels by April 2021 (jaundice) and by Aug 2020 (abdominal imaging) (Figure 4A and B).

Figures 4C and D represent two pancreatic cancer treatments. The prescribing of pancreatic enzyme replacement in primary care was not affected by the pandemic. However, pancreatic cancer resection (surgery) was significantly affected in both periods of the pandemic. For every 100 people diagnosed, 6 people were recorded as having received the resection within six months after pancreatic cancer diagnosis. We estimated that this was two people less than the predicted 8 (95% CI: 6 to 10) in the lockdown period and 9 (95% CI: 7 to 11) in the recovery period and represented an over 25% reduction in the number of people who received surgical resection during the pandemic as compared to what would be expected based on the pre-pandemic trends.

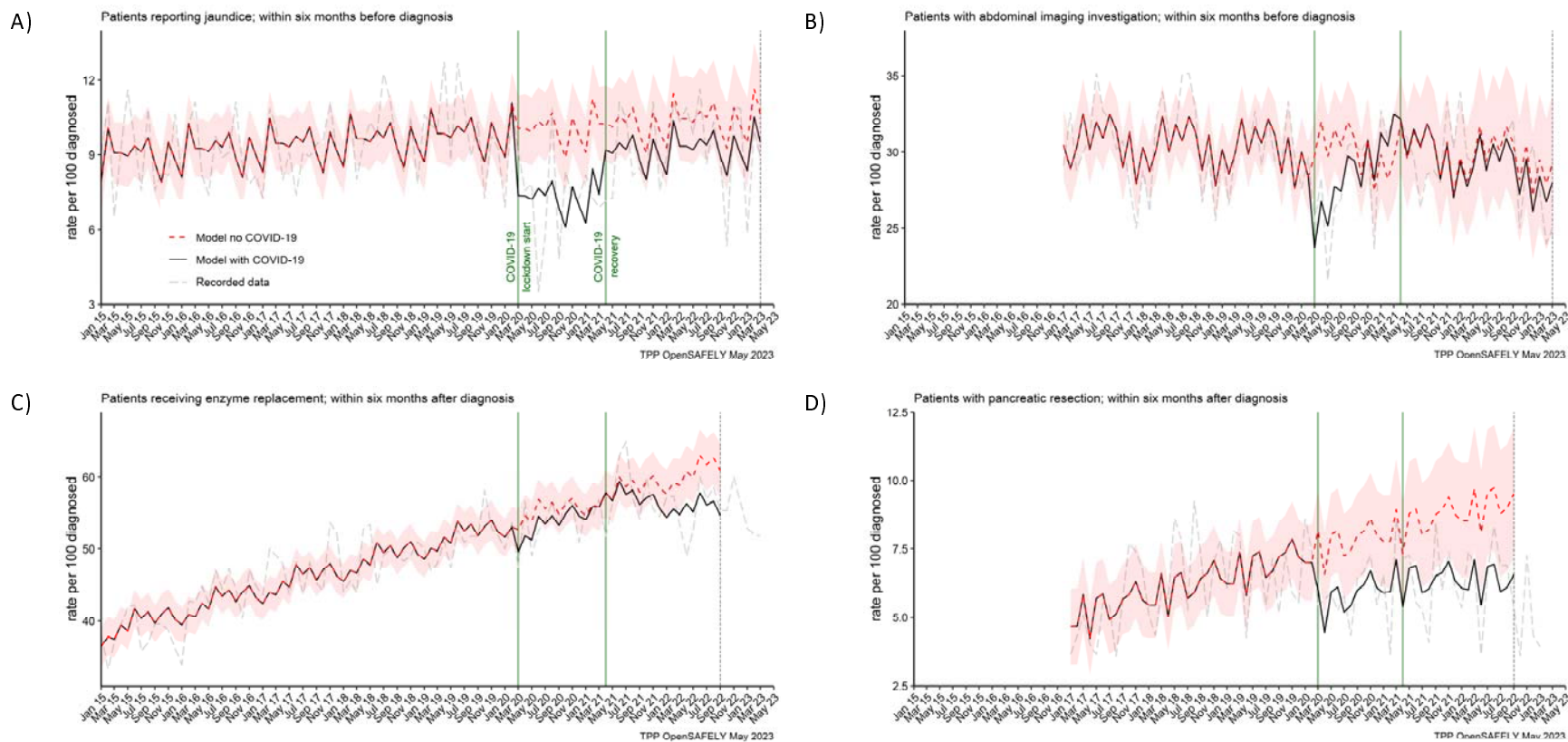


Figure 4. The observed and predicted (as if the COVID-19 pandemic had not happened) monthly rates of people A) reporting jaundice before the diagnosis, B) receiving abdominal imaging assessment before the diagnosis, C) receiving pancreatic enzyme supplementation after the diagnosis, and D) pancreatic resection within after the diagnosis.

Emergency department visits, hospital admissions and deaths

In the cohort of people diagnosed with pancreatic cancer, we found no effect of the COVID-19 pandemic on the number of emergency department visits and hospitalisations within six months before or six months after pancreatic cancer diagnosis, and the numbers of recorded deaths within six months after pancreatic cancer diagnosis (Figure 5). The rates did not differ from what would be expected if the pandemic had not occurred (Table 2). The decrease in rates of deaths toward the end of the study period, visible from the graph, is most likely due to delays in deaths being entered into the registry data [34].

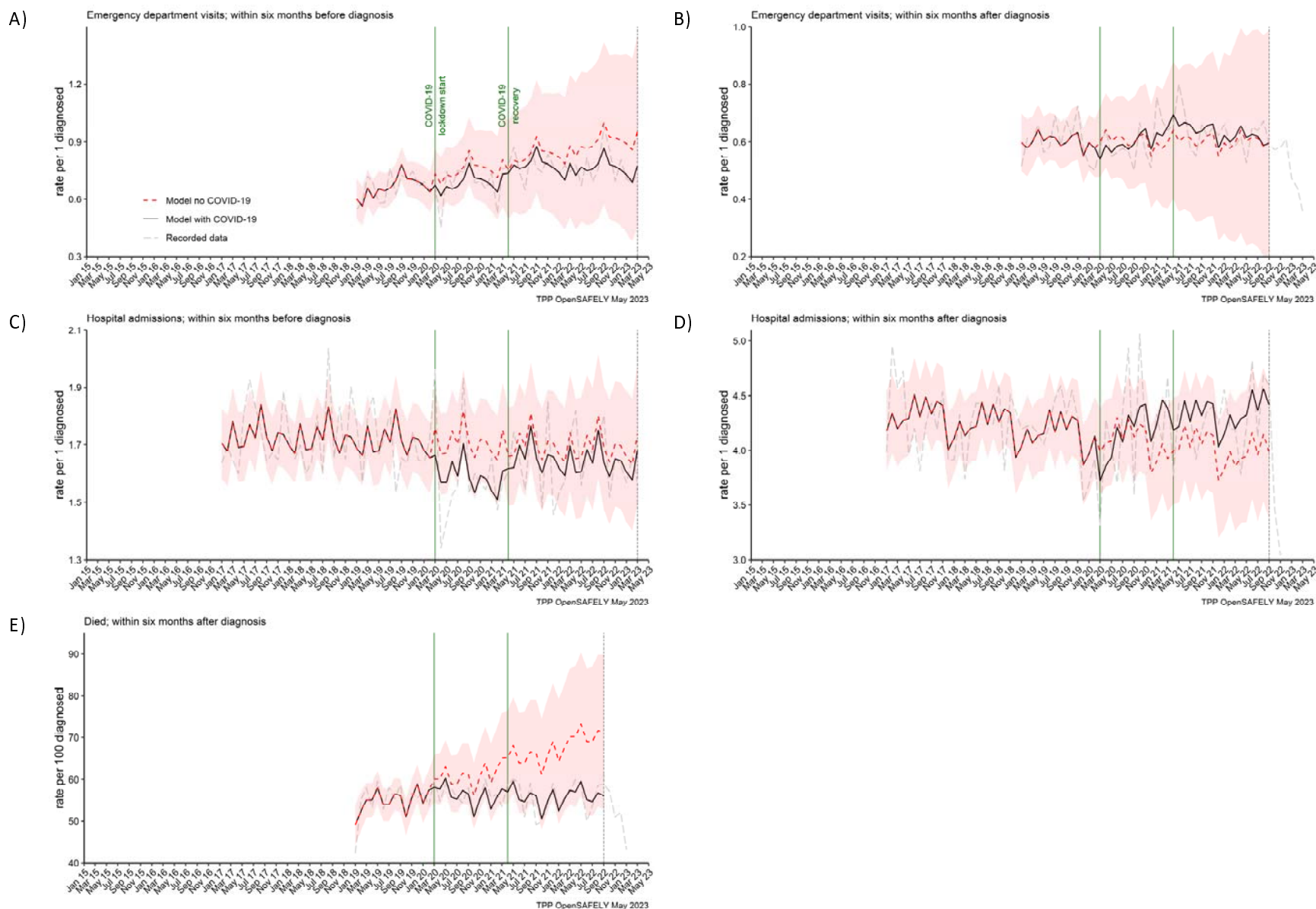


Figure 5. The observed and predicted (as if the COVID-19 pandemic had not happened) monthly rates of episodes per 1 participant diagnosed with pancreatic cancer, A) emergency department visits within six months before the diagnosis, B) emergency department visits within six months after, C) hospital admissions within six months before, D) hospital admissions within six months after, and E) deaths within six months after per 100 people diagnosed with pancreatic cancer.

Discussion

Summary and findings in context

We found that many of the pancreatic cancer-related services were disrupted across the pathway of care. This is in line with previous reports about healthcare being negatively affected by the COVID-19 pandemic [3-9, 11-14]. Healthcare assessments, such as BMI, HbA1c and liver function, were delivered to fewer people than would be expected if the pandemic had not occurred. This could impair not only the early diagnosis of pancreatic cancer, but also diagnosis of other diseases such as diabetes [29]. In addition, this could have implications for the quality of routine data for research [29, 35, 36].

Disappointingly, we observed that by March 2023, three years into the pandemic, the pre-diagnosis testing of BMI and HbA1c did not recover to the pre-pandemic levels. However, reassuringly, for people who received pancreatic cancer diagnosis (post-diagnosis testing of BMI, HbA1c and liver function), the primary care healthcare in this area was much more resilient. We observed that the effect of the pandemic on these tests for people already diagnosed was more transient, and after an initial drop in BMI and HbA1c at the start of the pandemic, the levels recovered by the end of the lockdown period (March 2021). More reassuringly also, the other services that after an initial decrease recovered by the end of the lockdown period, included consultations for jaundice in primary care and abdominal imaging in secondary care. It has been previously reported that many non-emergency diagnostic services, such as abdominal imaging, were suspended during the first peak of the pandemic, but they gradually reopened starting from July 2020 following publications of infection control guidelines [37].

The number of people recorded as diagnosed with pancreatic cancer was not affected. This is a positive finding but sets pancreatic cancer apart from the other major cancer sites such as breast [4, 5], prostate [4, 19], or colorectal [4-6, 19, 20]. This may be because pancreatic cancer does not rely on screening programs and diagnostic services in primary care which were severely affected during the pandemic. With the emergency presentations remaining the main route of diagnosis for pancreatic cancer [38], it is possible that these were less affected. However, because staging information was not available, our study was not equipped to evaluate the full effect of the COVID-19 pandemic on pancreatic cancer diagnosis. In a relatively small study, Hall et al. 2023 [39] demonstrated that nearly a quarter of people less in the pandemic than before the pandemic was recommended for surgery. This could be because they were diagnosed with a more advanced cancer. Therefore, to better understand the effect of the COVID-19 pandemic on pancreatic cancer diagnosis, more research is needed to assess the staging information.

Similarly, although we showed that the number of deaths within six months after pancreatic cancer diagnosis was not affected, the conclusions that could be made about the length of survival were limited. Madge et al. (2022) [40] showed the length of survival reducing by more than a half from 7.4 months before the pandemic to 3.3 months during the pandemic. While Hall et al. 2023 [39] demonstrated no difference in survival and reported 3.5 months survival for people diagnosed between March 2020 and May 2020 versus 4.4 months for people diagnosed in January 2019 to March 2019. Therefore, more research is needed to assess the effect of the pandemic on the length of survival post diagnosis. In addition, the ongoing and future effects of the COVID-19 pandemic on key outcomes of pancreatic cancer such as the stage at diagnosis and the length of survival are still to be elucidated.

Additionally, contrary to the evidence from other patient groups, in this cohort, we did not find an effect of the COVID-19 pandemic on diabetes diagnosis. While in the general population, there was a significant reduction in diabetes diagnosis and management services [41].

Most people (over 90%) were in contact with primary care before and after pancreatic cancer diagnosis, and this was not affected by the pandemic. However, as compared to the pre-pandemic levels, we observed that the number of contacts in the pandemic increased on average by 1 to 2 contacts per person. This may reflect a true increase of contacts as primary care transitioned to remote consulting with an increased role of telephone triage [42]. However, this may also reflect increased recording of contacts in electronic health records as practices responded to the pandemic using different online systems with automated code recording activity [43]. Remote consulting offers an important advantage for improved efficiency and access not only during pandemics [44]. However, it has been shown that for complex conditions, remote consulting can be a more time-consuming approach, increasing workload with subsequent follow-up appointments [45, 46].

Strengths and limitations

The OpenSAFELY-TPP dataset is a population-based and nationally representative dataset of an unprecedented size and completeness. It also offers access to primary care records linked with hospital and mortality data. Therefore, the OpenSAFELY-TPP dataset was the key strength of this study [32]. Also the cohort study design was a strength because we were able to focus specifically on people affected by pancreatic cancer, rather than investigate the already well known effect of COVID-19 on general practice [47]. The interrupted time series approach and modelling COVID-19 rates has an advantage over simply comparing COVID-19 rates to pre-COVID rates. This is because we could account for long-term trends and seasonal variation in healthcare data. We used data dating back to 2015 to model the trends which made the prediction of expected rates more accurate. This provided a less-biased estimate of the effect of the pandemic. The near real-time data available via OpenSAFELY enabled us to investigate the most recent trends and recovery from the pandemic. In addition, the automated audit of healthcare services that we have developed within the OpenSAFELY, can enable regular updates. All analytics software and code lists are shared openly and are available for inspection and reuse, providing opportunity for reproduction of this report and reducing duplicative efforts.

We also note some limitations. Lists of clinical codes used to extract data may not be exhaustive and may miss episodes of care. This could create a source of bias. To minimise this bias, we have ensured that in an iterative process of curation and checking for completeness, at least two researchers with clinical expertise took part in collating code lists. To ensure the right concepts were captured, we consulted with clinicians who have the specific expertise in the field. We applied the principles of open, transparent, and reproducible research and all our code lists are available for scrutiny and reuse via our public GitHub repository (github.com/opensafely/Pancreatic_cancer). Pancreatic cancer case ascertainment was via coding in primary care, rather than via linkage with cancer registry (the gold standard data source for cancer diagnoses). It is possible that with this approach some pancreatic cancer cases could have been missed or miscoded. However, in the UK, the information about cancer diagnosis is sent to primary care within the hospital discharge letters and therefore primary care is a valid source of these data [48]. The incidence rates in this study aligned with the published rates validating good ascertainment of cases.

Policy Implications and future research

Considering the worsening healthcare crisis, it is important to continue monitoring services to ensure the quality of healthcare and recovery from the pandemic. As we innovate and adapt healthcare, with infection control measures, digital health approaches and increasing remote consulting, it is important to evaluate the impact of these on cancer-related healthcare. In addition, more research is needed to investigate how these changes affected different groups of patients. There is evidence that the COVID-19 pandemic exacerbated healthcare inequalities [14] and future work should include stratified analysis investigating different socio-demographic groups.

Conclusions

The COVID-19 pandemic was an unprecedented global event, adding pressures to already overburdened healthcare systems, further exacerbating healthcare crises. Positive lessons could be learnt from the resilient healthcare services which continued to deliver healthcare uninterrupted, or those initially affected, where active measures to recover the capacity and volume of care were implemented quickly and safely. On the other hand, the reductions in healthcare experienced by people with non-COVID-19 illnesses such as pancreatic cancer, bolster the argument that efforts should focus on addressing the unmet needs of people with cancer.

Declarations

Acknowledgements

We are very grateful for all the support received from the TPP Technical Operations team throughout this work, and for generous assistance from the information governance and database teams at NHS England and the NHS England Transformation Directorate.

Membership of the OpenSAFELY Collaborative: Alex J. Walker, Brian MacKenna, Peter Inglesby, Christopher T. Rentsch, Helen J. Curtis, Caroline E. Morton, Jessica Morley, Amir Mehrkar, Seb Bacon, George Hickman, Chris Bates, Richard Croker, David Evans, Tom Ward, Jonathan Cockburn, Simon Davy, Krishnan Bhaskaran, Anna Schultze, Elizabeth J. Williamson, William J. Hulme, Helen I. McDonald, Laurie Tomlinson, Rohini Mathur, Rosalind M. Eggo, Kevin Wing, Angel Y. S. Wong, Harriet Forbes, John Tazare, John Parry, Frank Hester, Sam Harper, Ian J. Douglas, Stephen J. W. Evans, Liam Smeeth & Ben Goldacre

Conflicts of Interest

BG has received research funding from the Laura and John Arnold Foundation, the NHS National Institute for Health Research (NIHR), the NIHR School of Primary Care Research, NHS England, the NIHR Oxford Biomedical Research Centre, the Mohn-Westlake Foundation, NIHR Applied Research Collaboration Oxford and Thames Valley, the Wellcome Trust, the Good Thinking Foundation, Health Data Research UK, the Health Foundation, the World Health Organisation, UKRI MRC, Asthma UK, the British Lung Foundation, and the Longitudinal Health and Wellbeing strand of the National Core Studies programme; he was previously a Non-Executive Director at NHS Digital; he also receives personal income from speaking and writing for lay audiences on the misuse of science. AM is a former employee and interim CMO of NHS Digital, a member of RCGP health informatics group and the NHS Digital GP data Professional Advisory Group. BMK is employed as a pharmacist by NHS England and seconded to the Bennett Institute and is a trustee of a charity ICAP.

Funding statement

This work was supported by the Wellcome Trust grant number 222097/Z/20/Z; Medical Research Council (MRC) grant numbers MR/V015757/1, MC_PC-20059, MR/W016729/1; National Institute for Health and Care Research (NIHR) grant numbers NIHR135559, COV-LT2-0073, and Health Data Research UK grant numbers HDRUK2021.000, HDRUK2021.0157.

This work was also supported by the MRC grant number MR/W021390/1 as part of the postdoctoral fellowship awarded to AL and undertaken at the Bennett Institute, University of Oxford.

The views expressed are those of the authors and not necessarily those of the NIHR, NHS England, UK Health Security Agency (UKHSA) or the Department of Health and Social Care. Funders had no role in the study design, collection, analysis, and interpretation of data; in the writing of the report; and in the decision to submit the article for publication.

Information governance and ethical approval

NHS England is the data controller for OpenSAFELY-TPP; TPP is the data processor; all study authors using OpenSAFELY have the approval of NHS England. This implementation of OpenSAFELY is hosted within the TPP environment which is accredited to the ISO 27001 information security standard and is NHS IG Toolkit compliant [49].

Patient data has been pseudonymised for analysis and linkage using industry standard cryptographic hashing techniques; all pseudonymised datasets transmitted for linkage onto OpenSAFELY are encrypted; access to the platform is via a virtual private network (VPN) connection, restricted to a small group of researchers; the researchers hold contracts with NHS England and only access the platform to initiate database queries and statistical models; all database activity is logged; only aggregate statistical outputs leave the platform environment following best practice for anonymisation of results such as statistical disclosure control for low cell counts [50].

The OpenSAFELY research platform adheres to the obligations of the UK General Data Protection Regulation (GDPR) and the Data Protection Act 2018. In March 2020, the Secretary of State for Health and Social Care used powers under the UK Health Service (Control of Patient Information) Regulations 2002 (COPI) to require organisations to process confidential patient information for the purposes of protecting public health, providing healthcare services to the public and monitoring and managing the COVID-19 outbreak and incidents of exposure; this sets aside the requirement for patient consent [51]. This was extended in November 2022 for the NHS England OpenSAFELY COVID-19 research platform [52]. In some cases of data sharing, the common law duty of confidence is met using, for example, patient consent or support from the Health Research Authority Confidentiality Advisory Group [53].

Taken together, these provide the legal bases to link patient datasets on the OpenSAFELY platform. GP practices, from which the primary care data are obtained, are required to share relevant health information to support the public health response to the pandemic, and have been informed of the OpenSAFELY analytics platform.

The study was approved by the Health Research Authority (Research Ethics Committee reference 20/LO/0651) and the London School of Hygiene and Tropical Medicine (London, UK) Ethics Board (reference 21863).

Data access and verification

Access to the underlying identifiable and potentially re-identifiable pseudonymised electronic health record data is tightly governed by various legislative and regulatory frameworks and restricted by best practice. The data in OpenSAFELY is drawn from General Practice data across England where TPP is the data processor. TPP developers initiate an automated process to create pseudonymised records in the core OpenSAFELY database, which are copies of key structured data tables in the identifiable records. These pseudonymised records are linked onto key external data resources that have also been pseudonymised via SHA-512 one-way hashing of NHS numbers using a shared salt. Bennett Institute for Applied Data Science developers and PIs holding contracts with NHS England have access to the OpenSAFELY pseudonymised data tables as needed to develop the OpenSAFELY tools. These tools in turn enable researchers with OpenSAFELY data access agreements to write and execute code for data management and data analysis without direct access to the underlying raw pseudonymised patient data, and to review the outputs of this code. All code for the full data management pipeline—from raw data to completed results for this analysis—and for the OpenSAFELY platform as a whole is available for review at github.com/OpenSAFELY. The data management and analysis code for this paper was led by AL and contributed to by CA.

Data sharing

Data used in this project are pseudonymised patient level data that are potentially re-identifiable and therefore cannot be shared or deposited open access. Data are available via the OpenSAFELY platform with the approval of NHS England who is the data controller. Researchers applying for

access to data for their projects are requested to submit a protocol and complete a data request form (as described here: <https://www.opensafely.org/onboarding-new-users/>). The process is outlined in detail in a flowchart <https://www.opensafely.org/governance/os-workflow.jpg>. Software for data extraction and analysis, and code lists used to define variables, are shared openly for review and reuse at github.com/opensafely/Pancreatic_cancer.

References

1. *The NHS Long Term Plan (January 2019)* <https://www.longtermplan.nhs.uk/wp-content/uploads/2019/08/nhs-long-term-plan-version-1.2.pdf> accessed Sept 2022.
2. *A five-year framework for GP contract reform to implement The NHS Long Term Plan (2019)* <https://www.england.nhs.uk/publication/gp-contract-five-year-framework/> accessed November 2020.
3. Greenwood, E. and C. Swanton, *Consequences of COVID-19 for cancer care — a CRUK perspective*. *Nature Reviews Clinical Oncology*, 2021. **18**(1): p. 3-4.
4. Patt, D., et al., *Impact of COVID-19 on Cancer Care: How the Pandemic Is Delaying Cancer Diagnosis and Treatment for American Seniors*. *JCO Clinical Cancer Informatics*, 2020(4): p. 1059-1071.
5. Richards, M., et al., *The impact of the COVID-19 pandemic on cancer care*. *Nature Cancer*, 2020. **1**(6): p. 565-567.
6. Morris, E.J.A., et al., *Impact of the COVID-19 pandemic on the detection and management of colorectal cancer in England: a population-based study*. *The Lancet Gastroenterology & Hepatology*, 2021. **6**(3): p. 199-208.
7. McKay, S.C., et al., *Impact of SARS-CoV-2 pandemic on pancreatic cancer services and treatment pathways: United Kingdom experience*. *HPB (Oxford)*, 2021. **23**(11): p. 1656-1665.
8. Glasbey, J., et al., *Effect of COVID-19 pandemic lockdowns on planned cancer surgery for 15 tumour types in 61 countries: an international, prospective, cohort study*. *The Lancet Oncology*, 2021. **22**(11): p. 1507-1517.
9. Nepogodiev, D., et al., *Projecting COVID-19 disruption to elective surgery*. *The Lancet*, 2022. **399**(10321): p. 233-234.
10. Diamand, R., et al., *Timing and delay of radical prostatectomy do not lead to adverse oncologic outcomes: results from a large European cohort at the times of COVID-19 pandemic*. *World J Urol*, 2021. **39**(6): p. 1789-1796.
11. Sud, A., et al., *Collateral damage: the impact on outcomes from cancer surgery of the COVID-19 pandemic*. *Ann Oncol*, 2020. **31**(8): p. 1065-1074.
12. Earnshaw, C.H., et al., *Reduction in skin cancer diagnosis, and overall cancer referrals, during the COVID-19 pandemic*. *British Journal of Dermatology*, 2020. **183**(4): p. 792-794.
13. Geh, D., et al., *COVID-19 and liver cancer: lost patients and larger tumours*. *BMJ Open Gastroenterology*, 2022. **9**(1): p. e000794.
14. Popovic, M., et al., *The Impact of the COVID-19 Pandemic on Head and Neck Cancer Diagnosis in the Piedmont Region, Italy: Interrupted Time-Series Analysis*. *Front Public Health*, 2022. **10**: p. 809283.
15. Mercier, G., C. Arquizan, and F. Roubille, *Understanding the effects of COVID-19 on health care and systems*. *The Lancet Public Health*, 2020. **5**(10): p. e524.
16. Williams, R., et al., *Diagnosis of physical and mental health conditions in primary care during the COVID-19 pandemic: a retrospective cohort study*. *The Lancet Public Health*, 2020. **5**(10): p. e543-e550.
17. Núñez, A., S.D. Sreeganga, and A. Ramaprasad, *Access to Healthcare during COVID-19*. *Int J Environ Res Public Health*, 2021. **18**(6).
18. Smolić, Š., N. Blaževski, and M. Fabijančić, *Remote Healthcare During the COVID-19 Pandemic: Findings for Older Adults in 27 European Countries and Israel*. *Front Public Health*, 2022. **10**: p. 921379.

19. Vardhanabhuti, V. and K.S. Ng, *Differential Impact of COVID-19 on Cancer Diagnostic Services Based on Body Regions: A Public Facility-Based Study in Hong Kong*. Int J Radiat Oncol Biol Phys, 2021. **111**(2): p. 331-336.
20. Mazidimoradi, A., et al., *Impact of the COVID-19 Pandemic on Colorectal Cancer Diagnosis and Treatment: a Systematic Review*. J Gastrointest Cancer, 2021: p. 1-17.
21. Cooke, E.A., et al., *The Impact of COVID-19 on Mental Health Services in Scotland, UK*. Stud Health Technol Inform, 2022. **295**: p. 59-62.
22. Robb, C.E., et al., *Associations of Social Isolation with Anxiety and Depression During the Early COVID-19 Pandemic: A Survey of Older Adults in London, UK*. Front Psychiatry, 2020. **11**: p. 591120.
23. Smith, G., et al., *Observational study of mental health presentations across healthcare setting during the first 9 months of the COVID-19 pandemic in England*. JMIR Public Health Surveill, 2022.
24. Hughes, H.E., et al., *Emergency department use during COVID-19 as described by syndromic surveillance*. Emerg Med J, 2020. **37**(10): p. 600-604.
25. Quinn-Scoggins, H.D., et al., *Cancer symptom experience and help-seeking behaviour during the COVID-19 pandemic in the UK: a cross-sectional population survey*. BMJ Open, 2021. **11**(9): p. e053095.
26. *Macmillan Cancer Support 2020. The Forgotten 'C'? The impact of COVID-19 on cancer care*. October 2020; Available from: www.macmillan.org.uk/assets/forgotten-c-impact-of-covid-19-on-cancer-care.pdf accessed Feb 2022.
27. Zhang, L., S. Sanagapalli, and A. Stoita, *Challenges in diagnosis of pancreatic cancer*. World J Gastroenterol, 2018. **24**(19): p. 2047-2060.
28. Mueller, A.M., et al., *Weight change and blood glucose concentration as markers for pancreatic cancer in subjects with new-onset diabetes mellitus: A matched case-control study*. Pancreatology, 2019. **19**(4): p. 578-586.
29. Lemanska, A., et al., *BMI and HbA1c are metabolic markers for pancreatic cancer: Matched case-control study using a UK primary care database*. PLOS ONE, 2022. **17**(10): p. e0275369.
30. Sharma, A., et al., *Fasting Blood Glucose Levels Provide Estimate of Duration and Progression of Pancreatic Cancer Before Diagnosis*. Gastroenterology, 2018. **155**(2): p. 490-500.e2.
31. *All-Party Parliamentary Group on Pancreatic Cancer Report: The Impact of Covid-19 on Pancreatic Cancer Treatment and Care in England, 2021*. <https://www.pancreaticcancer.org.uk/wp-content/uploads/2021/04/APPG-report-The-Impact-of-Covid-19-on-Pancreatic-Cancer-Treatment-and-Care-in-England.pdf> accessed June 2022.
32. Andrews, C., et al., *OpenSAFELY: Representativeness of electronic health record platform OpenSAFELY-TPP data compared to the population of England*. Wellcome Open Res, 2022. **7**: p. 191.
33. Benchimol, E.I., et al., *The REporting of studies Conducted using Observational Routinely-collected health Data (RECORD) Statement*. PLOS Medicine, 2015. **12**(10): p. e1001885.
34. *Office for National Statistics, 2021. Impact of registration delays on mortality statistics in England and Wales: 2020*, <https://www.ons.gov.uk/peoplepopulationandcommunity/birthsdeathsandmarriages/deaths/articles/impactofregistrationdelaysonmortalitystatisticsinenglandandwales/>

- [2020#:~:text=In%202020,%20deaths%20from%20external,or%20more\)%20to%20be%20registered](#), accessed November 2022.
35. Garies, S., et al., *A data quality assessment to inform hypertension surveillance using primary care electronic medical record data from Alberta, Canada*. BMC Public Health, 2021. **21**(1): p. 264.
 36. Staff, M., C. Roberts, and L. March, *The completeness of electronic medical record data for patients with Type 2 Diabetes in primary care and its implications for computer modelling of predicted clinical outcomes*. Prim Care Diabetes, 2016. **10**(5): p. 352-9.
 37. Rees, C.J., et al., *Restarting gastrointestinal endoscopy in the deceleration and early recovery phases of COVID-19 pandemic: Guidance from the British Society of Gastroenterology*. Clin Med (Lond), 2020. **20**(4): p. 352-358.
 38. *National Cancer Intelligence Network (2013), Routes to Diagnosis: Exploring Emergency Presentations*
http://www.ncin.org.uk/publications/data_briefings/routes_to_diagnosis_exploring_emergency_presentations accessed Aug 2022.
 39. Hall, L.A., et al., *The impact of the COVID-19 pandemic upon pancreatic cancer treatment (CONTACT Study): a UK national observational cohort study*. British Journal of Cancer, 2023. **128**(10): p. 1922-1932.
 40. Madge, O., et al., *The COVID-19 Pandemic Is Associated with Reduced Survival after Pancreatic Ductal Adenocarcinoma Diagnosis: A Single-Centre Retrospective Analysis*. J Clin Med, 2022. **11**(9).
 41. Carr, M.J., et al., *Impact of COVID-19 on diagnoses, monitoring, and mortality in people with type 2 diabetes in the UK*. Lancet Diabetes Endocrinol, 2021. **9**(7): p. 413-415.
 42. Greenhalgh, T. and R. Rosen, *Remote by default general practice: must we, should we, dare we?* Br J Gen Pract, 2021. **71**(705): p. 149-150.
 43. Fisher, L., et al., *Eleven key measures for monitoring general practice clinical activity during COVID-19 using federated analytics on 48 million adults' primary care records through OpenSAFELY*. medRxiv, 2022: p. 2022.10.17.22281058.
 44. Mold, F., et al., *COVID-19 and beyond: virtual consultations in primary care-reflecting on the evidence base for implementation and ensuring reach: commentary article*. BMJ Health Care Inform, 2021. **28**(1).
 45. Salisbury, C., M. Murphy, and P. Duncan, *The Impact of Digital-First Consultations on Workload in General Practice: Modeling Study*. J Med Internet Res, 2020. **22**(6): p. e18203.
 46. Murphy, M., et al., *Implementation of remote consulting in UK primary care following the COVID-19 pandemic: a mixed-methods longitudinal study*. Br J Gen Pract, 2021. **71**(704): p. e166-e177.
 47. *The Health Foundation 2021. How has the COVID-19 pandemic impacted primary care?* <https://www.health.org.uk/news-and-comment/charts-and-infographics/how-has-the-covid-19-pandemic-impacted-primary-care> accessed April 2022.
 48. Margulis, A.V., et al., *Validation of Cancer Cases Using Primary Care, Cancer Registry, and Hospitalization Data in the United Kingdom*. Epidemiology, 2018. **29**(2): p. 308-313.
 49. *Data Security and Protection Toolkit - NHS Digital*. NHS Digital.
<https://digital.nhs.uk/data-and-information/looking-after-information/data-security->

- [and-information-governance/data-security-and-protection-toolkit](#) (accessed 30 Apr 2020).
50. *ISB1523: Anonymisation Standard for Publishing Health and Social Care Data - NHS Digital*. NHS Digital. <https://digital.nhs.uk/data-and-information/information-standards/information-standards-and-data-collections-including-extractions/publications-and-notifications/standards-and-collections/isb1523-anonymisation-standard-for-publishing-health-and-social-care-data> (accessed 30 Apr 2020).
 51. *Secretary of State for Health and Social Care - UK Government. Coronavirus (COVID-19): notification to organisations to share information*. 2020. <https://web.archive.org/web/20200421171727/https://www.gov.uk/government/publications/coronavirus-covid-19-notification-of-data-controllers-to-share-information> (accessed June 2022).
 52. *Secretary of State for Health and Social Care - UK Government. Coronavirus (COVID-19): notification to organisations to share information*. 2022. <https://www.gov.uk/government/publications/coronavirus-covid-19-notification-to-organisations-to-share-information/coronavirus-covid-19-notice-under-regulation-34-of-the-health-service-control-of-patient-information-regulations-2002> (accessed April 2023).
 53. *Confidentiality Advisory Group. Health Research Authority*. <https://www.hra.nhs.uk/about-us/committees-and-services/confidentiality-advisory-group/> (accessed April 2023).