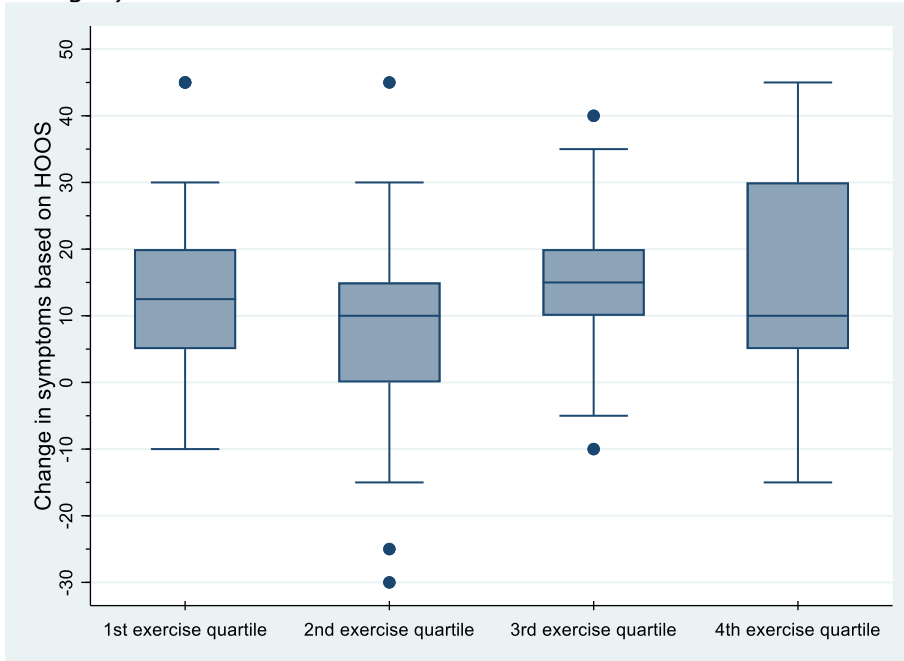


## Appendix C – Supplementary results on secondary and exploratory analyses

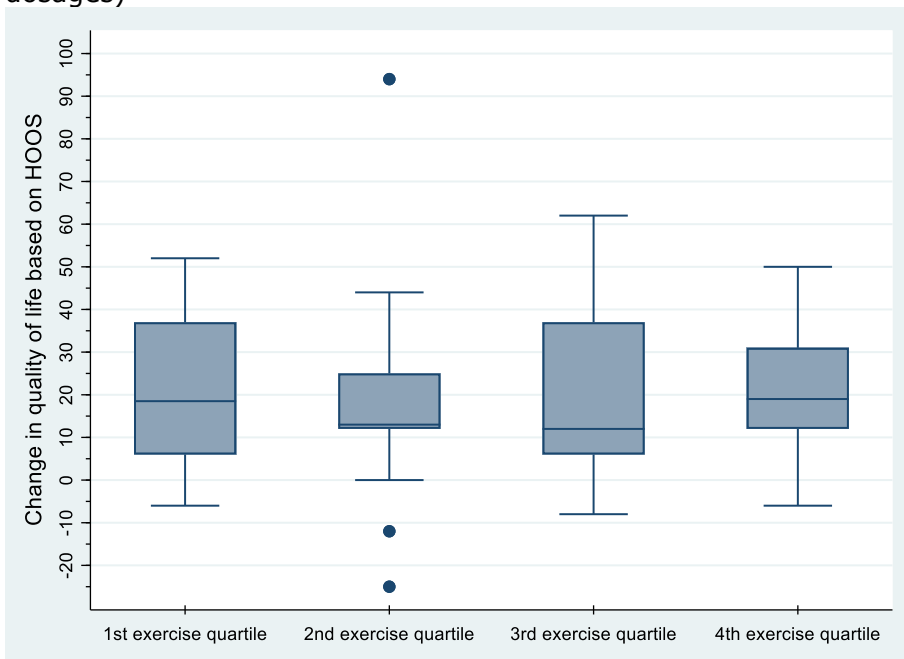
Appendix to: *Hip strengthening exercise dosage is not associated with clinical improvements after total hip arthroplasty – a prospective cohort study (the PHETHAS-1 study)*

### Secondary analysis

**Figure C1.** Box plots of the 3 (baseline) to 10-week (follow-up) median change in symptoms measured by HOOS, for quartile groups of performed number of repetitions per week (exercise dosages).



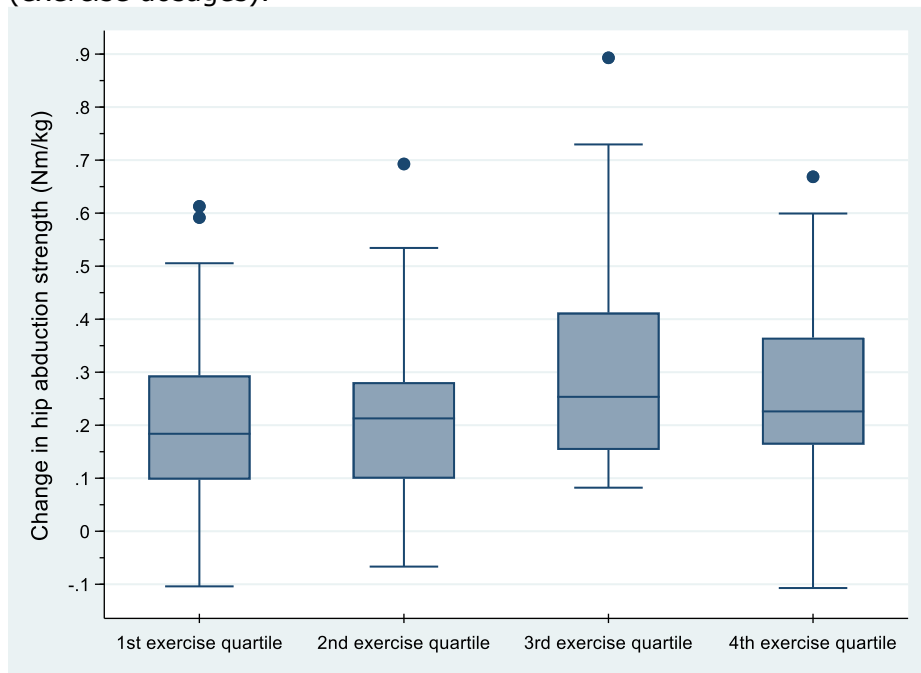
**Figure C2.** Box plots of the 3 (baseline) to 10-week (follow-up) median change in quality of life measured by HOOS, for quartile groups of performed number of repetitions per week (exercise dosages)



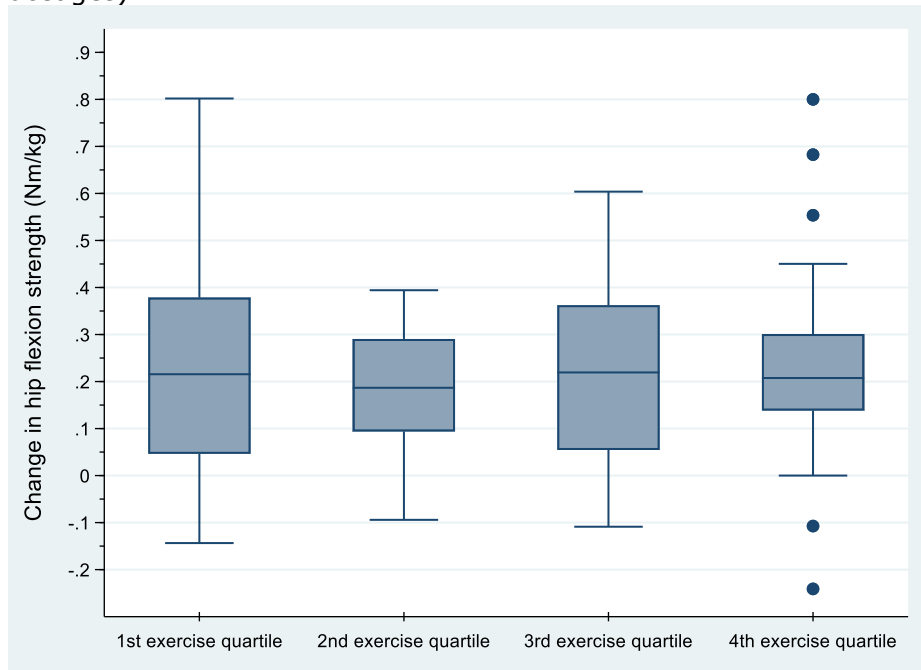
## Appendix C – Supplementary results on secondary and exploratory analyses

Appendix to: *Hip strengthening exercise dosage is not associated with clinical improvements after total hip arthroplasty – a prospective cohort study (the PHETHAS-1 study)*

**Figure C3.** Box plots of the 3 (baseline) to 10-week (follow-up) median change in isometric hip abduction strength (Nm/kg), for quartile groups of performed number of repetitions per week (exercise dosages).



**Figure C4.** Box plots of the 3 (baseline) to 10-week (follow-up) median change in isometric hip flexion strength, for quartile groups of performed number of repetitions per week (exercise dosages).



## Appendix C – Supplementary results on secondary and exploratory analyses

Appendix to: *Hip strengthening exercise dosage is not associated with clinical improvements after total hip arthroplasty – a prospective cohort study (the PHETHAS-1 study)*

**Table C1.** Change in outcomes from baseline (3 weeks after surgery) to follow-up (10 weeks after surgery) distributed on quartiles of performed exercise dose.

	1st exercise quartile (28-208 reps/week) n=22	2nd exercise quartile (209-338 reps/week) n=23	3rd exercise quartile (339-548 reps/week) n=23	4th exercise quartile (549-1812 reps/week) n=23
<b>Gait speed,</b> m/sec <i>mean (95% CI)</i>	0.26 (0.18; 0.33)	0.32 (0.25; 0.39)	0.37 (0.28; 0.47)	0.37 (0.30; 0.45)
<b>HOOS_adl</b> <i>mean (95% CI)</i>	13 (8; 19)	10 (5; 15)	16 (11; 21)	16 (10; 22)
<b>HOOS_pain</b> <i>mean (95% CI)</i>	14 (8; 19)	10 (4; 15)*	16 (9; 22)	14 (8; 20)
<b>HOOS_sym</b> <i>mean (95% CI)</i>	14 (7; 20)	6 (-1; 14)*	15 (10; 20)	14 (8; 21)
<b>HOOS_qol</b> <i>mean (95% CI)</i>	19 (11; 27)	18 (8; 29)†	20 (12;28)	23 (17; 29)
<b>30s chair-stand</b> <i>mean (95% CI)</i>	3.9 (2.0; 5.8) §	4.6 (2.6; 6.5) §	6.0 (4.4; 7.5)	5.0 (3.8; 6.1)‡
<b>Hip abduction strength,</b> Nm/kg <i>mean (95% CI)</i>	0.22 (0.13; 0.30)	0.22 (0.13; 0.30)‡	0.32 (0.23; 0.41)	0.26 (0.18; 0.33)
<b>Hip flexion strength,</b> Nm/kg <i>mean (95% CI)</i>	0.24 (0.14; 0.34)	0.18 (0.12; 0.24)*	0.22 (0.14; 0.31)*	0.24 (0.14; 0.34)

\* n=22, † n=21, ‡ n=20, § n=18

**Table C2.** Association between gait speed at 10 weeks follow up and the independent variables: performed exercise dose (mean number of repetitions/week), self-efficacy at baseline, 24-hour physical activity (Mean upright time/day and mean number of steps/day), and gait speed at baseline. The association is presented as relative increase.

<b>Independent variables</b>	<b>Coefficient (95% CI)</b>
Mean number of repetitions/week (in hundreds)	1.007 (0.998; 1.017)
Self-efficacy at baseline	1.048 ( 0.995; 1.104)
Mean upright time/day	0.981 (0.964; 0.998)
Mean number of steps/day	1.000 (1.000; 1.000)
Gait speed at baseline	1.005 (1.004; 1.005)

## Appendix C – Supplementary results on secondary and exploratory analyses

Appendix to: *Hip strengthening exercise dosage is not associated with clinical improvements after total hip arthroplasty – a prospective cohort study (the PHETHAS-1 study)*

### Exploratory analyses

#### Factors associated with exercise dose

Based on the statistical approach thoroughly described in Appendix A, the association is tested differently among the independent variables.

For HOOS\_pain at 3 weeks and Self-efficacy at 3 weeks, the association could be presented as a polynomial equation along with presentation of a graphical prediction line. To show further details on distribution of data, analyses based on quartiles – along with Kruskal-Wallis test – is also presented.

**Table C3.**

Factors associated with exercise dose in terms of repetitions per week and exercise days per week.

Dependent variable	Repetitions per week		Exercise days per week	
Independent variable	Median (1st-3rd quartile) p-values (Kruskall-Wallis test) *		Median (1st-3rd quartile) p-values (Kruskall-Wallis test) *	
<b>Number of pain flares (week 0-2), n=91</b>				
- No pain flares, n=73†	339 (208-561)	p=0.82	2.7 (2-3.2)	p=0.97
- One pain flare, n=11	462 (246-521)		3 (2.0-3.2)	
- Two or more pain flares, n=7	257 (144-500)		2.6 (1.4-3.3)	
- No pain flares, n=73†	339 (208-561)	p=0.76	2.7 (2-3.2)	p=0.83
- At least one pain flare, n=18	383.5 (246-500)		2.8 (2.0-3.2)	
<b>Number of pain flares (entire period), n=91</b>				
- No pain flares, n=71†	370 (182-572)	p=0.66	2.7 (2-3.2)	p=0.85
- One pain flare, n=10	391 (302-521)		3.0 (2.0-3.2)	
- Two or more pain flares, n=10	254.5 (209-470)		2.6 (2.4-3.2)	
- No pain flares, n=71†	370 (182-572)	p=0.59	2.7 (2-3.2)	p=0.78
- At least one pain flare, n=20	312.5 (234-485)		2.9 (2.2-3.2)	
<b>HOOS_pain at 3 week, n=90†</b>	Association is visualized in Figure 12	p=0.11‡		
- 1st quartile (40-65), n=26†			2.6 (2.0-3.1)	
- 2nd quartile (68-75), n=21			3.1 (2.4-3.3)	
- 3rd quartile (78-88), n=21			2.8 (2.2-3.4)	p=0.43
- 4th quartile (90-100), n=22			2.7 (1.6-3.1)	
<b>Self-efficacy at 3 week, n=75</b>	Association is visualized in Figure 13	p= 0.38§		
- 1st quartile (1-2.9), n=18			3.1 (2-3.3)	
- 2nd quartile (3-3.4), n=24			2.8 (2.2-3.4)	
- 3rd quartile (3.5-3.8), n=24†			2.6 (2.0-3.1)	p=0.28
- 4th quartile (3.9-4), n=19			2.6 (1.7-3)	
<b>Motivation to perform exercises</b>				
- Very much, n=78†	373 (212-550)		2.8 (2.1-3.2)	
- To some degree, n=11	305 (144-492)	p=0.31	2.7 (1.4-3.3)	
- A little, n=1	99 (99-99)		0.3 (0.3-0.3)	p=0.23

## Appendix C – Supplementary results on secondary and exploratory analyses

Appendix to: *Hip strengthening exercise dosage is not associated with clinical improvements after total hip arthroplasty – a prospective cohort study (the PHETHAS-1 study)*

- Not at all, n=0 - Don't know, n=0	NA NA		NA NA	
- Very much, n=78 <sup>†</sup> - Less than very much, n=12	373 (212-550) 275.5 (121.5-477.5)	p=0.28	2.8 (2.1-3.2) 2.7 (1.3-3.2)	p=0.64
<b>Belief in effect of exercises</b> - Very much, n=85 <sup>†</sup> - To some degree, n=5 - A little, n=0 - Not at all, n=0 - Don't know, n=0	376 (209-549) 257 (222-305) NA NA NA	p=0.40	2.8 (2.0-3.2) 2.7 (2.6-3.1) NA NA NA	p=0.98
<b>Self-belief in compliance to exercise</b> - Very certain, n=49 - Almost certain, n=40 <sup>†</sup> - A little uncertain, n=1 - Very uncertain, n=0 - Don't know, n=0	418 (175-550) 323 (222-510.5) 222 (222-222) NA NA	p=0.72	2.9 (2.1-3.2) 2.6 (2-3.2) 2.7 (2.7-2.7) NA NA	p=0.71
- Very certain, n=49 - Less than very certain, n=41 <sup>†</sup>	418 (175-550) 308 (222-500)	p=0.69	2.9 (2.1-3.2) 2.6 (2-3.2)	p=0.41
<b>Satisfaction with rehabilitation exercises</b> - Very satisfied, n=63 - Satisfied, n=21 - Unsatisfied, n=3 <sup>‡</sup> - Very unsatisfied, n=1 - Don't know, n=1	418 (208-589) 320 (222-539) 214 (52-252) 246 (246-246) 68 (68-68)	p=0.19	2.8 (2.1-3.2) 3 (2.1-3.4) 1.9 (0.9-2.3) 2.0 (2.0-2.0) 0.6 (0.6-0.6)	p=0.11
- Satisfied or very satisfied, n=84 - Unsatisfied or very unsatisfied, n=4 <sup>‡</sup>	230 (133-249) 379.5 (210.5-555.5)	p=0.07	2.8 (2.1-3.2) 2.0 (1.5-2.3)	p=0.03
<b>Upright time per day (hours), n=78</b>	44 (3; 84), p=0.04			
- 1st quartile (2.58-4.39), n=20 - 2nd quartile (4.41-5.6), n=20 - 3rd quartile (5.69-6.56), n=20 - 4th quartile (6.58-9.34), n=19			2.8 (2.0-3.2) 2.6 (2.1-3.1) 2.5 (1.6-3.3) 2.9 (2.3-3.2)	p=0.78
<b>Steps per day (in 1000), n=78</b>	36 (13; 58), p=0.003			
- 1st quartile (1748-4744), n=20 - 2nd quartile (4887-6019), n=20 - 3rd quartile (6346-8239), n=20 - 4th quartile (8907-14188), n=19			2.7 (2.3-3.1) 2.3 (1.8-3) 2.8 (1.9-3.1) 3.1 (2.3-3.4)	p=0.28

\* unless otherwise stated

† plus one extra observation in analysis of association between exercise days and independent variable

‡ a non-linear regression model (third-grade polynomial) was used.

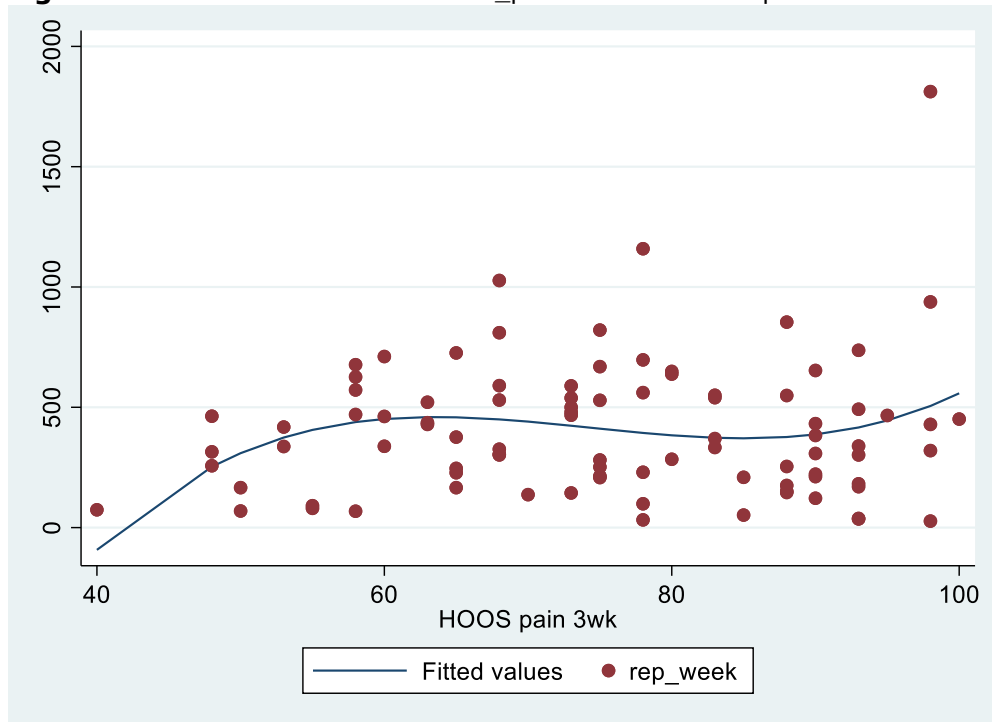
§ a non-linear regression model (fourth-grade polynomial) was used.

|| A linear regression model was used

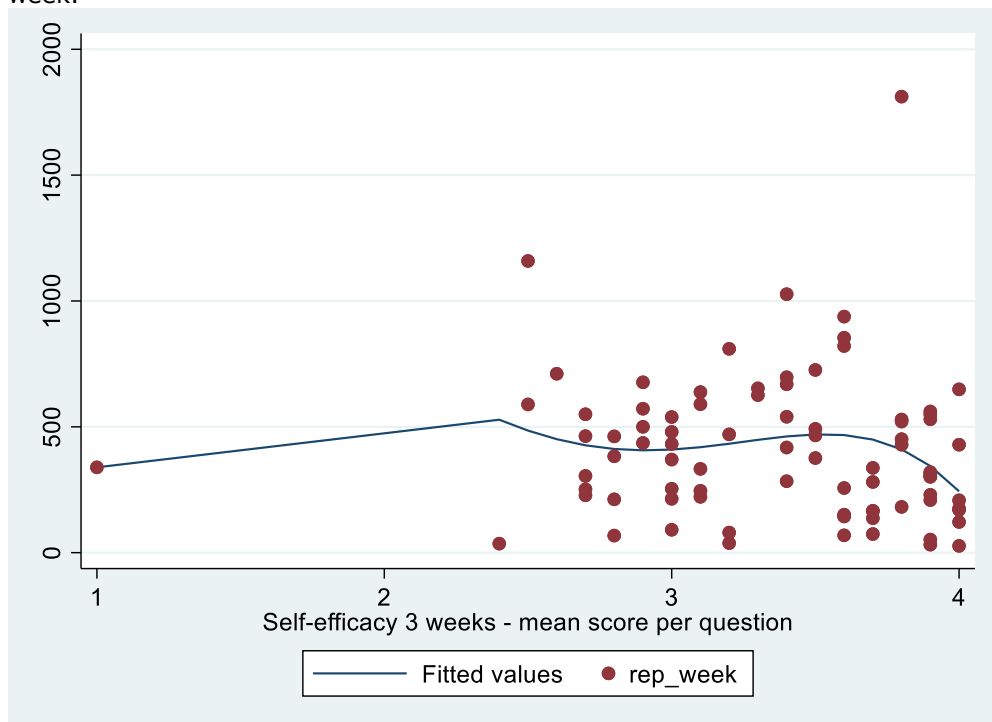
**Appendix C – Supplementary results on secondary and exploratory analyses**

Appendix to: *Hip strengthening exercise dosage is not associated with clinical improvements after total hip arthroplasty – a prospective cohort study (the PHETHAS-1 study)*

**Figure C5.** Association between HOOS\_pain at baseline and performed number of repetitions per week.



**Figure C6.** Association between mean self-efficacy at baseline and performed number of repetitions per week.



## Appendix C – Supplementary results on secondary and exploratory analyses

Appendix to: *Hip strengthening exercise dosage is not associated with clinical improvements after total hip arthroplasty – a prospective cohort study (the PHETHAS-1 study)*

### Factors associated with physical activity

**Table C4.** Factors associated with physical activity in terms of upright time per day and steps per day. Association is determined by univariate linear regression models

Independent variable \ Dependent variable	Upright time/day (hours)	Step/day (numbers)
Number of pain flares (week 0-2), n=81	-0.14 (-0.55; 0.26)	-118 (-828; 592)
HOOS_pain at 3 week, n=80	-0.01 (-0.03; 0.01)	-41 (-80; -2)*
Self-efficacy at 3 week, n=75	-0.30 (-0.98; 0.38)	617 (-595; 1829)
Motivation to perform exercises	<i>Reference</i>	<i>Reference</i>
- Very much, n=70	-0.55 (-1.64; 0.53)	-763 (-2695; 1169)
- To some degree, n=9	-2.37 (-5.45; 0.71)	164 (-5330; 5658)
- A little, n=1	NA	NA
- Not at all, n=0	NA	NA
- Don't know, n=0	-0.73 (-1.77; 0.30)	-670 (-2503; 1163)
Very much versus lesser degree of motivation (very much is reference value)		
Self-belief in compliance to exercising	<i>Reference</i>	<i>Reference</i>
- Very certain, n=43	0.37 (-0.32; 1.06)	-525 (-1739; 690)
- Almost certain, n=37	NA	NA
- A little uncertain, n=0	NA	NA
- Very uncertain, n=0	NA	NA
- Don't know, n=0	NA	NA

\*p=0.04

### Patient-perceived change in hip symptoms and MCII

**Table C5.** Change from baseline(3 weeks) to 10-week follow-up in gait speed, HOOS\_adl, HOOS\_symp, HOOS\_pain and HOOS\_qol, distributed on level of patient-perceived change in hip symptoms

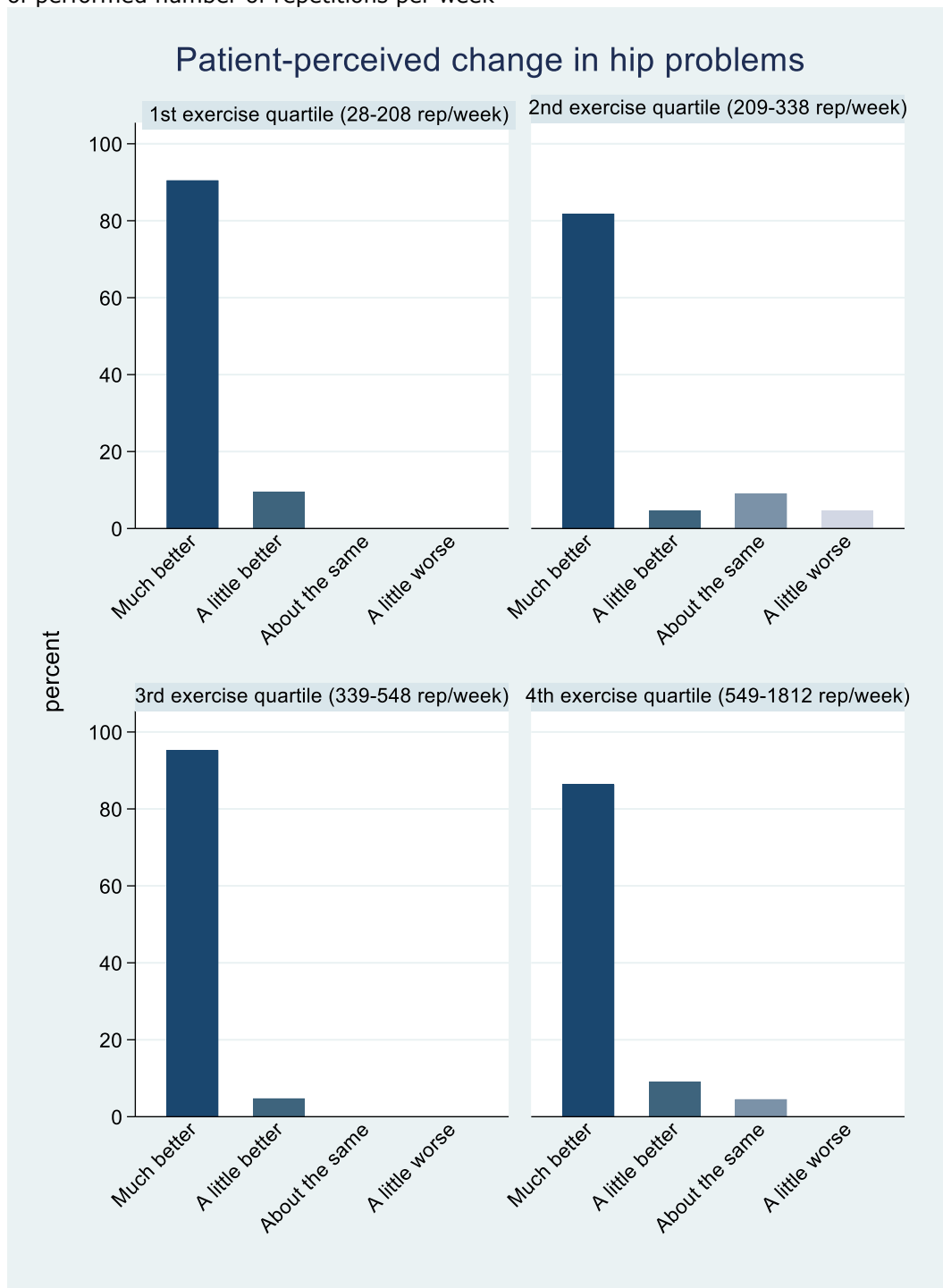
	Change in HOOS_adl mean (95% CI)	Change in HOOS_pain mean (95% CI)	Change in HOOS_symp mean (95% CI)	Change in HOOS_qol mean (95% CI)	Change in gait speed (m/sec) median [1st-3rd quartile]
<b>Much better,</b> n=77	14 (11; 17)*	14 (11; 17)	14 (11; 16)	22 (19; 27)*	0.32 [0.21-0.42]†
<b>A little better,</b> n=6	15 (-5; 36)	13 (-5; 30)	18 (-6; 41)	10 (-4; 24)	0.36 [0.30-0.41]
<b>About the same,</b> n=4	9 (-12; 30)	-4 (-23; 15)	-4 (-32; 25)	3 (-31; 37)	0.20 [0.18-0.23]
<b>A little worse,</b> n=1	6 (NA)	12 (NA)	-25 (NA)	0 (NA)	0.36 [NA]
<b>Much worse,</b> n=0	NA	NA	NA	NA	NA

\* n=76, † n=78

**Appendix C – Supplementary results on secondary and exploratory analyses**

Appendix to: *Hip strengthening exercise dosage is not associated with clinical improvements after total hip arthroplasty – a prospective cohort study (the PHETHAS-1 study)*

**Figure C7.** Distribution of level of patient-perceived change in hip symptoms presented for each quartile of performed number of repetitions per week



**MCII**

Due to only 6 observations reporting change in hip symptoms to be "a little better", the estimate of MCII was very imprecise. Results can be seen in tableC4.



## Appendix C – Supplementary results on secondary and exploratory analyses

Appendix to: *Hip strengthening exercise dosage is not associated with clinical improvements after total hip arthroplasty – a prospective cohort study (the PHETHAS-1 study)*

### Patient-perceived result of surgery

**Table C6.** Change from baseline to 10-week follow-up in gait speed, HOOS\_adl, HOOS\_symp, HOOS\_pain and HOOS\_qol, distributed on level of patient-perceived result of surgery

	<b>Change in HOOS_adl</b> mean (95% CI)	<b>Change in HOOS_pain</b> mean (95% CI)	<b>Change in HOOS_symp</b> mean (95% CI)	<b>Change in HOOS_qol</b> mean (95% CI)	<b>Change in gait speed</b> (m/sec) median [1st-3rd quartile]
<b>Excellent</b>	n=56 14 (11; 18)	n=57 14 (11; 18)	n=57 13 (10; 16)	n=57 22 (17; 27)	n=58 0.32 [0.20-0.43]
<b>Very good</b>	n=23 13 (8; 17)	n=23 13 (8; 18)	n=23 15 (10; 20)	n=23 20 (11; 30)	n=23 0.34 [0.27-0.40]
<b>Good</b>	n=4 22 (7; 37)	n=4 17 (-7; 41)	n=4 15 (-13; 43)	n=4 22 (9; 35)	n=4 0.34 [0.25-0.40]
<b>Fair</b>	n=2 [6-10]*	n=2 [-10-12]*	n=2 [-25-10]*	n=2 [0-12]*	n=2 [0.25-0.36]*
<b>Poor</b>	n=2 [-10-18]*	n=2 [-17-10]*	n=2 [-30-5]*	n=2 [-25-0]*	n=2 [0.16-0.21]*
<b>Acceptable†</b>	n=83 14 (11; 17)	n=84 14 (11;17)	n=84 14 (11;16)	n=83 21 (17; 25)	85 0.33 [0.21-0.42]
<b>Not acceptable‡</b>	n=4 6 (-13; 25)	n=4 -1 (-24; 22)	n=4 -10 (-42; 22)	n=4 -3 (-28; 22)	4 0.23 [0.18-0.31]

\* Range

† Comprises participants reporting an excellent, very good or good result of the operation

‡ Comprises participants reporting a fair or poor result of the operation

### PASS

**Table C7.** Mean and median scores for HOOS subscales at 10 week follow-up for participants reporting a good, very good or excellent result of the operation.

	<b>Mean (95% CI)</b>	<b>Median [1st-3rd quartile]</b>
<b>HOOS_adl, n=84</b>	89 (87; 91)	91 [87.5-95.5]
<b>HOOS_symptoms, n=85</b>	84 (81; 86)	85 [75-90]
<b>HOOS_pain, n=85</b>	90 (88; 93)	93 [85-98]
<b>HOOS_qol, n=84</b>	78 (74; 81)	75 [69-100]