

1 **ARTICLE TITLE:**

2 Efficacy and Safety of 5-Day Oral Ensitrelvir for Patients With Mild-to-Moderate COVID-19:
3 The SCORPIO-SR Randomized Clinical Trial

4

5 **AUTHORS:**

6 Hiroshi Yotsuyanagi, M.D., Ph.D.,¹ Norio Ohmagari, M.D., Ph.D.,² Yohei Doi, M.D., Ph.D.,^{3,4}

7 Masaya Yamato, M.D., Ph.D.,⁵ Nguyen Hoang Bac, M.D., Ph.D.,⁶ Bong Ki Cha, M.D., Ph.D.,⁷

8 Takumi Imamura, M.S.,⁸ Takuhiro Sonoyama, M.D., Ph.D.,⁸ Genki Ichihashi, M.Pharm.,⁸ Takao

9 Sanaki, Ph.D.,⁹ Yuko Tsuge, M.S.,⁸ Takeki Uehara, Ph.D.,⁸ and Hiroshi Mukae, M.D., Ph.D.¹⁰

10

11 **AFFILIATIONS:**

12 ¹The Institute of Medical Science, The University of Tokyo, Tokyo, Japan

13 ²Disease Control and Prevention Center, National Center for Global Health and Medicine,

14 Tokyo, Japan

15 ³Division of Infectious Diseases, University of Pittsburgh School of Medicine, Pittsburgh,

16 Pennsylvania, USA

17 ⁴Departments of Microbiology and Infectious Diseases, Fujita Health University School of

18 Medicine, Toyoake, Japan

19 ⁵Infectious Diseases Center, Rinku General Medical Center, Izumisano, Japan

20 ⁶Endoscopic Surgery Training Center, University Medical Center, University of Medicine and

21 Pharmacy, Ho Chi Minh City, Vietnam

22 ⁷Department of Internal Medicine, Chung-Ang Medical Health Care System Hyundae Hospital,

23 Gyeonggi-do, Republic of Korea

24 ⁸Drug Development and Regulatory Science Division, Shionogi & Co., Ltd., Osaka, Japan

25 ⁹Research Division, Shionogi & Co., Ltd., Toyonaka, Japan

26 ¹⁰Department of Respiratory Medicine, Nagasaki University Graduate School of Biomedical

27 Sciences, Nagasaki, Japan

28

29 **CORRESPONDING AUTHOR:**

30 Takeki Uehara

31 Drug Development and Regulatory Science Division, Shionogi & Co., Ltd.

32 Address: 8F, Nissay Yodoyabashi East, 3-3-13 Imabashi, Chuo-ku, Osaka 541-0042, Japan

33 Email: takeki.uehara@shionogi.co.jp

34 Telephone: +81-6-6209-6907

35

36 **Manuscript word count:** 2930 words

37

38 **Key Points**

39 **Question** Can ensitrelvir, an oral severe acute respiratory syndrome coronavirus 2 3C-like
40 protease inhibitor, shorten the duration of symptoms in patients with mild-to-moderate COVID-
41 19 irrespective of risk factors for severe disease?

42 **Findings** In this phase 3 part of a phase 2/3, double-blind, randomized study SCORPIO-SR, a
43 statistically significant difference was observed in the time to resolution of five COVID-19
44 symptoms between ensitrelvir 125 mg and placebo in patients randomized in less than 72 hours
45 of disease onset. Viral RNA and viral titer demonstrated significant reduction vs placebo.

46 **Meaning** Ensitrelvir 125 mg treatment shortened time to resolution of key COVID-19
47 symptoms.

48

49 **Abstract**

50 **IMPORTANCE** Treatment options for coronavirus disease 2019 (COVID-19) that can be used
51 irrespective of risk factors for severe disease are warranted.

52 **OBJECTIVE** To assess the efficacy and safety of ensitrelvir in patients with mild-to-moderate
53 COVID-19.

54 **DESIGN** The phase 3 part of a phase 2/3, double-blind, randomized, placebo-controlled study
55 conducted from February 10 to July 10, 2022.

56 **SETTING** A multicenter study conducted at 92 institutions in Japan, Vietnam, and South Korea.

57 **PARTICIPANTS** Patients (aged 12 to <70 years) with mild-to-moderate COVID-19 within 120
58 hours of positive viral testing.

59 **INTERVENTIONS** Patients were randomized (1:1:1) to receive once-daily ensitrelvir 125 mg
60 (375 mg on day 1), 250 mg (750 mg on day 1), or placebo for 5 days. Among 1821 randomized
61 patients, 1030 (347, 340, and 343 in the ensitrelvir 125-mg, ensitrelvir 250-mg, and placebo
62 groups, respectively) were randomized in less than 72 hours of disease onset and assessed as the
63 primary analysis population.

64 **MAIN OUTCOMES AND MEASURES** The primary end point was the time to resolution of
65 five COVID-19 symptoms (stuffy or runny nose, sore throat, cough, feeling hot or feverish, and
66 low energy or tiredness). Other end points included virologic efficacy and safety.

67 **RESULTS** The mean age was 35.7, 35.3, and 34.7 years, and 193 (55.6%), 185 (54.4%), and
68 174 (50.7%) patients were men in the ensitrelvir 125-mg, ensitrelvir 250-mg, and placebo
69 groups, respectively (intention-to-treat, primary analysis population). A significant difference
70 ($P=.04$ with a Peto-Prentice generalized Wilcoxon test stratified by vaccination history) was
71 observed in the primary end point between ensitrelvir 125 mg and placebo in the primary

72 analysis population (difference in median, –24.3 hours; 95% confidence interval, –78.7 to 11.7).

73 Viral RNA levels on day 4 and time to negative viral titer demonstrated significant reduction vs

74 placebo. The incidence of adverse events was 44.2%, 53.6%, and 24.8% in the ensitrelvir

75 125-mg, ensitrelvir 250-mg, and placebo groups, respectively. No treatment-related serious

76 adverse events were reported.

77 **CONCLUSIONS AND RELEVANCE** Treatment with ensitrelvir 125 mg demonstrated

78 clinical and antiviral efficacy without new safety concerns. Generalizability to non-Asian

79 populations should be confirmed.

80 **TRIAL REGISTRATION** Japan Registry of Clinical Trials identifier: [jRCT2031210350](https://www.clinicaltrials.gov/ct2/show/study?term=jRCT2031210350).

81

82 **Introduction**

83 Coronavirus disease 2019 (COVID-19) has rapidly spread worldwide, and in November 2021,
84 the severe acute respiratory syndrome coronavirus 2 (SARS-CoV-2) omicron variant was
85 declared a variant of concern by the World Health Organization.¹ Patients infected with the
86 omicron variant generally experience mild symptoms.²⁻⁴ However, despite the worldwide
87 administration of vaccinations, the omicron BA.5* subvariant, which evades vaccine-induced
88 immunity, has become dominant and has resulted in a rapid increase in new COVID-19 cases.⁵
89 Moreover, emergence of the omicron XBB* and BQ.1* sublineages, which also evade immunity,
90 has been reported worldwide.⁶

91 Several antiviral drugs against SARS-CoV-2 infection are available worldwide, such as RNA
92 polymerase inhibitors remdesivir⁷ and molnupiravir,⁸ and a SARS-CoV-2 3C-like (3CL)
93 protease inhibitor nirmatrelvir combined with pharmacokinetic booster ritonavir.⁹ However, their
94 clinical trials were conducted in high-risk, unvaccinated patients and at a time when the SARS-
95 CoV-2 Delta or pre-Delta variants were predominant. Therapeutic monoclonal antibodies against
96 SARS-CoV-2 have also been used for COVID-19, but recent *in vitro* studies suggest that most of
97 them are less efficacious to omicron subvariants than to previous variants.¹⁰⁻¹² Novel treatment
98 options that can be used irrespective of risk factors for severe disease are thus warranted.

99 Ensitrelvir fumaric acid is an oral SARS-CoV-2 3CL protease inhibitor that originated
100 through collaborative research between Shionogi & Co., Ltd. and Hokkaido University in
101 Japan.¹³ Ensitrelvir treatment showed antiviral effects against multiple SARS-CoV-2 variants of
102 concern, including omicron subvariants, in *in vitro* and *in vivo* studies.¹³⁻¹⁷ A seamless, phase
103 2/3, double-blind, randomized, placebo-controlled study is currently underway (Japan Registry
104 of Clinical Trials identifier: jRCT2031210350). In the phase 2a and 2b parts, ensitrelvir

105 treatment demonstrated decreased viral load vs placebo.^{18,19} Moreover, improvements in four
106 respiratory symptoms (stuffy or runny nose, sore throat, shortness of breath, and cough) and the
107 composite of the four respiratory symptoms and feverishness were shown in the phase 2b part.¹⁹
108 The SCORPIO-SR trial is the phase 3 part of the phase 2/3 study and assessed the efficacy and
109 safety of 5-day, once-daily ensitrelvir in patients with mild-to-moderate COVID-19.

110

111 **Methods**

112 **Study Design**

113 The SCORPIO-SR trial was conducted from February 10 to July 10, 2022, across 92 institutions
114 in Japan (65 sites), Vietnam (2 sites), and South Korea (25 sites). The study protocol has been
115 published previously.²⁰ Patients with mild-to-moderate COVID-19 were randomized (1:1:1) to
116 the ensitrelvir 125 mg, ensitrelvir 250 mg, or placebo group. The patients were followed up until
117 day 28. Considering that the pharmacokinetic/pharmacodynamic analysis of phase 2b part of the
118 current phase 2/3 study did not show a clear difference in antiviral efficacy between the two
119 ensitrelvir dose groups, the 125-mg group was chosen as the efficacy analysis population.
120 Analyses between the ensitrelvir 250-mg and placebo groups were performed as a secondary
121 comparison.²⁰

122 The current phase 2/3 study employed a seamless design to maximize patient recruitment
123 during the SARS-CoV-2 epidemic, and the current phase 3 part was initiated with continuous
124 patient enrollment after the phase 2b part. The phase 3 protocol was amended based on data
125 obtained in the phase 2b part and in view of the changes in clinical features of the epidemic
126 caused by the omicron variant and its subvariants. All protocol amendments, including the
127 changes in the primary endpoint, analysis populations, statistical tests, and sample size

128 estimation, were made blinded from the phase 3 data and were finalized based on consultations
129 with infectious disease experts and regulatory authorities.²⁰

130 This study was conducted in accordance with the principles of the Declaration of Helsinki,
131 Good Clinical Practice guidelines, and other applicable laws and regulations. The study protocol
132 was reviewed and approved by the institutional review boards of all the participating institutions
133 (see the List of Investigators in the Supplement). Written informed consent was obtained from all
134 patients or their legally acceptable representatives.

135

136 **Patients**

137 Eligible patients with mild-to-moderate COVID-19 were those aged 12 to <70 years who tested
138 positive for SARS-CoV-2 within 120 hours prior to randomization. Patients should have had a
139 time of ≤ 120 hours from the onset of COVID-19 symptoms to randomization and at least one
140 moderate or severe symptom or worsening of an existing moderate or severe symptom among
141 the 12 COVID-19 symptoms defined based on the United States Food and Drug Administration
142 (FDA) guidance²¹ (eMethods). Key exclusion criteria included an awake oxygen saturation of
143 $\leq 93\%$ (room air), supplemental oxygen requirement, anticipated COVID-19 exacerbation within
144 48 hours of randomization, suspected active and systemic infections other than COVID-19
145 requiring treatment, current or chronic history of moderate or severe liver disease, known hepatic
146 or biliary abnormalities (except for Gilbert's syndrome or asymptomatic gallstones), and
147 moderate-to-severe kidney disease (eMethods).

148

149 **Randomization, Blinding, and Treatment**

150 Patient randomization was performed using an interactive response technology system and
151 stratification by the time from the onset of COVID-19 to randomization (<72 hours vs
152 \geq 72 hours) and SARS-CoV-2 vaccination history (at least one dose of vaccination: yes vs no).
153 All patients and study staff were blinded to the treatment, and emergency unblinding per the
154 investigator's request was allowed in case of occurrence of adverse events to determine the
155 appropriate therapy for the patient. Patients received ensitrelvir (375 mg on day 1 and 125 mg on
156 days 2 through 5 or 750 mg on day 1 and 250 mg on days 2 through 5) or matching placebo
157 tablets, which were identical in appearance and packaging, without dose modification. Treatment
158 was discontinued in case of COVID-19 exacerbation, serious or intolerable adverse events, and
159 pregnancy (eMethods).

160

161 **End Points**

162 The primary end point was the time to resolution of five COVID-19 symptoms (stuffy or runny
163 nose, sore throat, cough, feeling hot or feverish, and low energy or tiredness) on the basis that
164 they were most commonly observed symptoms in the phase 2b part of the current phase 2/3
165 study, conducted during the omicron BA.1 epidemic.²⁰ Key secondary end points were the
166 change from baseline in SARS-CoV-2 viral RNA level on day 4 (key secondary end point 1) and
167 time to first negative SARS-CoV-2 viral titer (key secondary end point 2). The time to resolution
168 of 12 COVID-19 symptoms (above-mentioned five symptoms, shortness of breath, muscle or
169 body aches, headache, chills or shivering, nausea, vomiting, and diarrhea) and 14 COVID-19
170 symptoms (above-mentioned 12 symptoms, anosmia, and dysgeusia) and the SARS-CoV-2 viral
171 RNA and viral titer up to day 21 were assessed as other secondary end points. Resolution of five,

172 12, and 14 COVID-19 symptoms was achieved when all the symptoms disappeared, improved,
173 or maintained after first administration of study intervention and the symptom resolution was
174 sustained for at least 24 hours in a patient. Each of the 12 COVID-19 symptoms was rated on a
175 4-point scale (None=0, Mild=1, Moderate=2, or Severe=3), whereas anosmia and dysgeusia were
176 rated on a 3-point scale (Same as usual=0, Less than usual=1, or No sense of smell/taste=2) by
177 the patient (eMethods). The safety end point was the incidence of adverse events that emerged
178 after treatment initiation.

179

180 **Assessments**

181 The severity of each COVID-19 symptom was recorded in a diary twice daily (morning and
182 evening) until day 9 and once daily (evening) from days 10 to 21. SARS-CoV-2 viral titer and
183 viral RNA were quantified using nasopharyngeal swabs collected on days 1 (before drug
184 administration), 2 to 6 (days 3 and 5 as optional visits), 9, 14, and 21 (or study discontinuation).
185 Adverse events were coded using the Medical Dictionary for Regulatory Activities, version 24.0
186 (eMethods).

187

188 **Statistical Analysis**

189 Considering the main pathophysiology of COVID-19 (viral proliferation for several days
190 followed by inflammatory reaction by the host immune system starting around 7 days after
191 onset), antiviral treatment is expected to be most effective when initiated in the early phase of
192 infection.²⁰ Based on an epidemiologic analysis in Japan, 62% of patients with COVID-19
193 hospitalized during the omicron BA.5 epidemic experienced disease progression within 3 days of
194 the onset.²² To evaluate the antiviral and clinical efficacy of ensitrelvir in the optimal patient

195 population, the primary analysis population for the primary and key secondary end points was
196 defined as patients randomized in less than 72 hours of disease onset in the intention-to-treat
197 population.²⁰ As reported previously,²⁰ assuming a Weibull distribution in the time to resolution
198 of the five COVID-19 symptoms, 230 patients per group were required to compare the survival
199 distributions of the primary end point between the ensitrelvir 125-mg and placebo groups using
200 the Peto-Prentice generalized Wilcoxon test with 80% power and a two-sided significance level
201 of .05. Assuming a 10% dropout rate before enrollment, the final sample size for the primary
202 analysis population was set to 260 patients per group (780 patients in total).²⁰ Of note, patient
203 enrollment was continued as originally planned to include 595 patients randomized within 120
204 hours of disease onset each in the ensitrelvir 125-mg, 250-mg, and placebo groups.

205 The statistical significance vs placebo for the primary end point in the primary analysis
206 population was tested using a Peto-Prentice generalized Wilcoxon test stratified by SARS-CoV-2
207 vaccination history (yes or no). A fixed-sequence hierarchical testing procedure was applied to
208 control for type I errors. The test was performed in the order of primary end point, key secondary
209 end point 1, and key secondary end point 2 in the primary analysis population. The tests were
210 repeated in the same order in patients randomized within 120 hours of disease onset until failure
211 in statistical significance (two-sided significance level of $\geq .05$).²⁰ All statistical comparisons
212 were performed at a two-sided significance level of .05. No imputation was performed for
213 missing data. All analyses were performed using SAS version 9.4 (SAS Institute, Inc, Cary, NC,
214 USA; eMethods).

215

216 **Results**

217 **Patients**

218 A total of 1821 patients were enrolled; 607, 606, and 608 were randomized to the ensitrelvir
219 125-mg, ensitrelvir 250-mg, and placebo groups, respectively (Figure 1). Of the 1821 patients,
220 1769 (97.1%) completed the study and 1030 (56.6%) were randomized in less than 72 hours of
221 disease onset.

222 Patient characteristics were similar across the groups (Table 1 and eTable 1) and were largely
223 representative of the expected patient population (eTable 2). In all groups, the mean age was
224 approximately 35 years, approximately half of the patients were men, and almost all patients
225 were Asian. The majority (>90%) of patients had received ≥ 2 doses of the SARS-CoV-2 vaccine.
226 Prior acetaminophen use was recorded for approximately 26% to 36% of the patients. Most
227 ($\geq 85\%$) patients were infected with the omicron BA.1 or BA.2 subvariant. The most common
228 COVID-19 symptoms across treatment groups were stuffy or runny nose, sore throat, cough,
229 feeling hot or feverish, and low energy or tiredness (Table 1). Approximately 70% of the patients
230 were those without risk factors for severe disease (Table 1 and eTable 3).

231

232 **Primary End Point**

233 A significant difference ($P=.04$ with a Peto-Prentice generalized Wilcoxon test) was observed
234 between ensitrelvir 125 mg (median, 167.9 hours; 95% confidence interval [CI], 145.0 to 197.6)
235 and placebo (median, 192.2 hours; 95% CI, 174.5 to 238.3) in the time to resolution of the five
236 COVID-19 symptoms among patients randomized in less than 72 hours of disease onset, i.e.,
237 primary analysis population (difference in median, -24.3 hours; 95% CI, -78.7 to 11.7; Figure
238 2A). No significant difference in the time to resolution of the five COVID-19 symptoms was

239 observed between ensitrelvir 125 mg and placebo for patients randomized within 120 hours of
240 disease onset (Figure 2B).

241

242 **Key Secondary End Points**

243 The least squares mean change from baseline in SARS-CoV-2 viral RNA level (\log_{10} copies/mL)
244 on day 4 in the primary analysis population was -2.48 (standard error [SE], 0.08) with the
245 ensitrelvir 125-mg group, as compared with -1.01 (SE, 0.08) with the placebo group ($P < .001$)
246 (Table 2). A significant difference ($P < .001$) was observed in the time to first negative SARS-
247 CoV-2 viral titer in the primary analysis population between ensitrelvir 125 mg (median, 36.2
248 hours; 95% CI, 23.4 to 43.2) and placebo (median, 65.3 hours; 95% CI, 62.0 to 66.8; eFigure
249 1A). Similar results were obtained for patients randomized within 120 hours of disease onset
250 (eFigure 1B).

251

252 **Other Secondary End Points**

253 No significant difference was observed in the time to resolution of the 12 COVID-19 symptoms
254 in the primary analysis population between ensitrelvir 125 mg and placebo. A significant
255 difference ($P = .03$) was observed in the time to resolution of the 14 COVID-19 symptoms in the
256 primary analysis population between ensitrelvir 125 mg (median, 187.8 hours; 95% CI, 156.4 to
257 217.0) and placebo (median, 231.8 hours; 95% CI, 192.1 to 265.8; Table 2).

258 No significant difference from placebo was observed with ensitrelvir 125 mg in the time to
259 resolution of the 12 and 14 COVID-19 symptoms in patients randomized within 120 hours of
260 disease onset (eTable 4). SARS-CoV-2 viral RNA levels and SARS-CoV-2 viral titers in the

261 ensitrelvir 125-mg group were significantly lower than those in the placebo group up to day 9
262 and day 6, respectively, irrespective of time to randomization (eFigure 2A-C and eFigure 3A-C).

263

264 **Safety**

265 The incidence of adverse events was 44.2%, 53.6%, and 24.8% in the ensitrelvir 125-mg,
266 ensitrelvir 250-mg, and placebo groups, respectively; the incidence of treatment-related adverse
267 events was 24.5%, 36.2%, and 9.9% in the ensitrelvir 125-mg, ensitrelvir 250-mg, and placebo
268 groups, respectively (Table 3). Most of the adverse events were mild, and a majority of
269 treatment-related adverse events resolved without sequelae.

270 Serious adverse events were observed in two patients (heavy menstrual bleeding in one
271 patient in the ensitrelvir 125-mg group on day 14 and acute cholecystitis in one patient in the
272 placebo group on day 9), both of which were judged as not treatment related. A decrease in high-
273 density lipoprotein levels was the most frequently reported adverse event (31.1%, 38.6%, and
274 3.8% in the ensitrelvir 125-mg, ensitrelvir 250-mg, and placebo groups, respectively) and the
275 most common treatment-related adverse event (18.4%, 26.2%, and 1.5% in the ensitrelvir 125-
276 mg, ensitrelvir 250-mg, and placebo groups, respectively) in both ensitrelvir groups. Adverse
277 events leading to treatment discontinuation were recorded in 12 patients. All treatment-related
278 adverse events leading to treatment discontinuation were deemed to be resolving or resolved
279 after discontinuation of the study. No adverse events leading to death were reported (Table 3).

280

281 **Discussion**

282 This phase 3 trial was conducted during the SARS-CoV-2 omicron BA.2 epidemic to assess the
283 efficacy and safety of 5-day, once-daily, oral ensitrelvir for mild-to-moderate COVID-19, using

284 the ensitrelvir 125-mg group as the efficacy analysis population.²⁰ More than 90% of the patients
285 had received ≥ 2 doses of the SARS-CoV-2 vaccine, and approximately 70% of the participants
286 did not have risk factors for severe disease. Treatment with ensitrelvir 125 mg once daily (375
287 mg on day 1) vs placebo showed a significant difference in the time to resolution of the five
288 typical symptoms of the omicron variant infection in patients randomized in less than 72 hours of
289 disease onset. Moreover, a significant reduction compared with placebo was observed in the two
290 key secondary end points representing antiviral efficacy. In contrast to the results in patients
291 randomized in less than 72 hours of disease onset, no significant difference between ensitrelvir
292 125 mg and placebo was observed in the time to resolution of the five COVID-19 symptoms in
293 patients randomized within 120 hours, suggesting the importance of early treatment initiation.
294 Ensitrelvir was generally well tolerated, and the most commonly observed adverse event, a
295 decrease in high-density lipoprotein level, is consistent with the findings of previous clinical
296 studies of ensitrelvir.^{18,19,23}

297 Previous clinical trials on oral antivirals for COVID-19 were conducted during the SARS-
298 CoV-2 Delta epidemic.^{8,9} These trials involved unvaccinated, high-risk adults with COVID-19
299 and demonstrated a reduction in the risk of hospitalization or death as the primary end point.^{8,9}
300 However, given the administration of vaccinations against COVID-19 and the nature of the
301 infection caused by the omicron variant, these end points could no longer be a viable option.
302 Indeed, published studies report a significant reduction in the risk of death, hospitalization, or
303 severe disease with the omicron vs the Delta infection.^{3,4,24} Moreover, real-world studies suggest
304 limited effectiveness of these antivirals to high-risk, vaccinated adults or patients infected with
305 the omicron variant in reducing the risk of severe COVID-19.^{25,26} In the current SCORPIO-SR
306 trial, none of the patients reported mechanical ventilation or death, and only one patient each in

307 the ensitrelvir 250-mg and placebo groups required COVID-19–related hospitalization or
308 equivalent recuperation during the study period (data not shown).

309 The symptom-based efficacy end points are suggested by the FDA as an alternative goal in
310 the development of antiviral treatment options for COVID-19 caused by recent SARS-CoV-2
311 variants.²¹ The phase 2/3 EPIC-SR study employed self-reported, sustained alleviation of all
312 targeted COVID-19 symptoms for four days as a novel primary end point to assess the efficacy
313 of nirmatrelvir with ritonavir.²⁷ Although a shortened time to sustained alleviation and resolution
314 of COVID-19 signs/symptoms was demonstrated in non-hospitalized adults with COVID-19 at
315 high risk of severe disease (EPIC-HR study),²⁸ the EPIC-SR study did not show a meaningful
316 difference in the time to sustained symptom alleviation through day 28.²⁹ The current SCORPIO-
317 SR study met the primary end point and demonstrated clinical efficacy of ensitrelvir in the
318 resolution of COVID-19 symptoms (sustained for at least 24 hours) irrespective of risk factors
319 for severe disease. Sustained resolution or alleviation of self-assessed symptoms can be
320 considered a valid and clinically meaningful efficacy end point for COVID-19 treatment.

321 The major limitation of this study is that it was conducted only in Asian countries, with a
322 limited number of non-Asian patients. The efficacy and safety of ensitrelvir in various patient
323 populations should be further assessed in daily clinical settings.

324 In conclusion, ensitrelvir treatment vs placebo demonstrated a reduction in the time to
325 resolution of the five typical COVID-19 symptoms in patients treated in less than 72 hours of
326 disease onset. The results also showed favorable antiviral efficacy of ensitrelvir. No new safety
327 concerns were identified, and ensitrelvir was well tolerated.

328

329 **ACKNOWLEDGMENTS**

330 **Author Contributions:** Dr Uehara had full access to all the data in the study and takes
331 responsibility for the integrity of the data and the accuracy of the data analysis.

332 Concept and design: Hiroshi Yotsuyanagi, Norio Ohmagari, Yohei Doi, Takumi Imamura,
333 Takuhiro Sonoyama, Genki Ichihashi, Takao Sanaki, Yuko Tsuge, Takeki Uehara, and Hiroshi
334 Mukae.

335 Acquisition, analysis, or interpretation of data: Hiroshi Yotsuyanagi, Norio Ohmagari, Yohei
336 Doi, Masaya Yamato, Nguyen Hoang Bac, Bong Ki Cha, Takumi Imamura, Takuhiro
337 Sonoyama, Genki Ichihashi, Takao Sanaki, Yuko Tsuge, Takeki Uehara, and Hiroshi Mukae.

338 Drafting of the manuscript: Takumi Imamura, Takuhiro Sonoyama, Genki Ichihashi, Takao
339 Sanaki, Yuko Tsuge, Takeki Uehara.

340 Critical revision of the manuscript for important intellectual content: Hiroshi Yotsuyanagi, Norio
341 Ohmagari, Yohei Doi, Masaya Yamato, Nguyen Hoang Bac, Bong Ki Cha, Takumi Imamura,
342 Takuhiro Sonoyama, Genki Ichihashi, Takao Sanaki, Yuko Tsuge, Takeki Uehara, and Hiroshi
343 Mukae.

344 Statistical analysis: Takumi Imamura.

345 Administrative, technical, or material support: Genki Ichihashi, Takao Sanaki, Yuko Tsuge.

346 Supervision: Takeki Uehara, and Hiroshi Mukae.

347 **Conflict of Interest Disclosures:** Dr Yotsuyanagi has received consulting fees from Shionogi,
348 lecture fees from Shionogi and ViiV Healthcare, and travel support from Shionogi outside the
349 submitted work. He serves as an advisory board member for Shionogi and President of the
350 Japanese Society of Infectious Diseases. Drs Ohmagari, Yamato, and Nguyen declare no conflict
351 of interest. Dr Doi has received funding relevant to the submitted work from Shionogi and grants

352 from Entasis; consulting fees from Gilead Sciences, Moderna, Shionogi, GSK, Meiji Seika,
353 bioMerieux, and FujiFilm; and lecture fees from Gilead Sciences, Shionogi, MSD, and
354 bioMerieux outside the submitted work. Dr Bong has received funding relevant to the submitted
355 work from Ildong Pharmaceutical (partner of Shionogi for the development of ensitrelvir in the
356 Republic of Korea) and grants from Hyundai Bioscience, Daewoong Pharmaceutical, and Asan
357 Pharm outside the submitted work. Mr Imamura, Dr Sonoyama, Mr Ichihashi, Mr Sanaki, Ms
358 Tsuge, and Dr Uehara are full-time employees of Shionogi and may own stocks or stock options.
359 Dr Mukae has received funding relevant to the submitted work from Shionogi, consulting fees
360 from Shionogi and MSD, and lecture fees from Shionogi, MSD, Gilead Sciences, AstraZeneca,
361 Pfizer, and GSK outside the submitted work.

362 **Funding/Support:** Planning, conduct, and analysis of the study were funded by Shionogi & Co.,
363 Ltd. and the Organization of the Ministry of Health, Labour and Welfare, Japan.

364 **Role of the Funder/Sponsor:** Employees of Shionogi & Co., Ltd. participated in study design;
365 collection, analysis, and interpretation of data; writing of the report; and decision to submit for
366 publication.

367 **Meeting presentations:** The work reported herein was presented in part at the joint congress of
368 the 92nd Annual Meeting of the Japanese Association for Infectious Diseases, Western Japan
369 Branch/the 65th Annual Meeting of the Japanese Association for Infectious Diseases, Central
370 Japan Branch/the 70th Annual Meeting of the Japanese Society of Chemotherapy, Western Japan
371 Branch (November 2022).

372 **Additional Contributions:** The authors and research team thank all the patients involved in this
373 study and Masahiro Kinoshita, Manami Yoshida, and Satoshi Kojima (Shionogi & Co., Ltd.) for
374 preparing technical support documents and an earlier version of the manuscript draft. Support for

375 data management was provided by EPS Corporation and funded by Shionogi & Co., Ltd.
376 Medical writing support was provided by Mami Hirano, M.Sc., of Cactus Life Sciences (part of
377 Cactus Communications), and funded by Shionogi & Co., Ltd.
378

379 **REFERENCES**

- 380 1. World Health Organization. Classification of Omicron (B.1.1.529): SARS-CoV-2 variant
381 of concern. [https://www.who.int/news/item/26-11-2021-classification-of-omicron-\(b.1.1.529\)-](https://www.who.int/news/item/26-11-2021-classification-of-omicron-(b.1.1.529)-sars-cov-2-variant-of-concern)
382 [sars-cov-2-variant-of-concern](https://www.who.int/news/item/26-11-2021-classification-of-omicron-(b.1.1.529)-sars-cov-2-variant-of-concern). Accessed June 29, 2023.
- 383 2. Wolter N, Jassat W, Walaza S, et al. Early assessment of the clinical severity of the
384 SARS-CoV-2 omicron variant in South Africa: a data linkage study. *Lancet*.
385 2022;399(10323):437-446.
- 386 3. Auvigne V, Vaux S, Strat YL, et al. Severe hospital events following symptomatic
387 infection with Sars-CoV-2 Omicron and Delta variants in France, December 2021-January 2022:
388 a retrospective, population-based, matched cohort study. *EClinicalMedicine*. 2022;48:101455.
- 389 4. Nyberg T, Ferguson NM, Nash SG, et al. Comparative analysis of the risks of
390 hospitalisation and death associated with SARS-CoV-2 omicron (B.1.1.529) and delta
391 (B.1.617.2) variants in England: a cohort study. *Lancet*. 2022;399(10332):1303-1312.
- 392 5. Kopsidas I, Karagiannidou S, Kostaki EG, et al. Global distribution, dispersal patterns,
393 and trend of several Omicron subvariants of SARS-CoV-2 across the globe. *Trop Med Infect Dis*.
394 2022;7(11):373.
- 395 6. World Health Organization. TAG-VE statement on Omicron sublineages BQ.1 and XBB.
396 [https://www.who.int/news/item/27-10-2022-tag-ve-statement-on-omicron-sublineages-bq.1-and-](https://www.who.int/news/item/27-10-2022-tag-ve-statement-on-omicron-sublineages-bq.1-and-xbb)
397 [xbb](https://www.who.int/news/item/27-10-2022-tag-ve-statement-on-omicron-sublineages-bq.1-and-xbb). Accessed June 29, 2023.
- 398 7. Beigel JH, Tomashek KM, Dodd LE, et al. Remdesivir for the treatment of Covid-19 -
399 final report. *N Engl J Med*. 2020;383(19):1813-1826.
- 400 8. Jayk Bernal A, Gomes da Silva MM, Musungaie DB, et al. Molnupiravir for oral
401 treatment of Covid-19 in nonhospitalized patients. *N Engl J Med*. 2022;386(6):509-520.

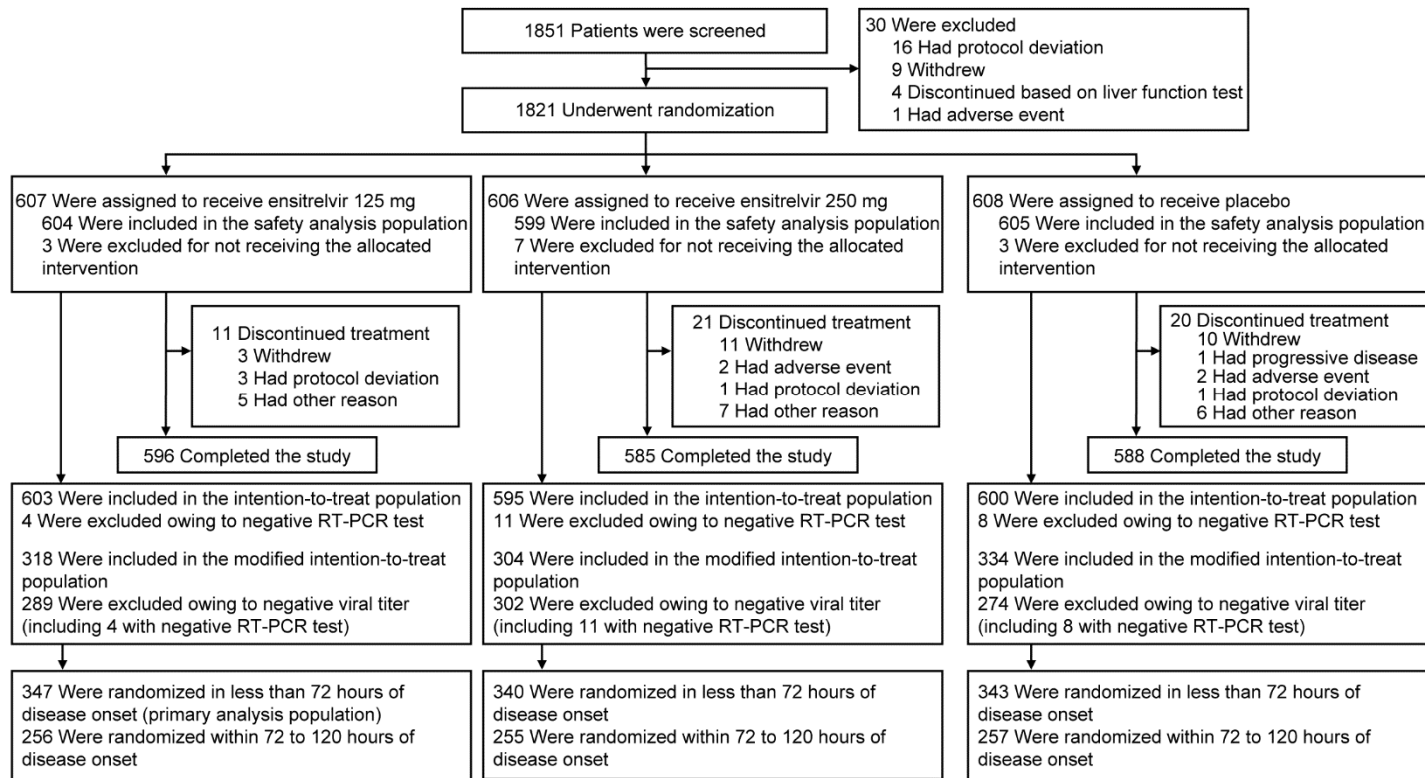
- 402 9. Hammond J, Leister-Tebbe H, Gardner A, et al. Oral nirmatrelvir for high-risk,
403 nonhospitalized adults with Covid-19. *N Engl J Med*. 2022;386(15):1397-408.
- 404 10. Takashita E, Yamayoshi S, Simon V, et al. Efficacy of antibodies and antiviral drugs
405 against Omicron BA.2.12.1, BA.4, and BA.5 subvariants. *N Engl J Med*. 2022;387(5):468-470.
- 406 11. Yamasoba D, Kosugi Y, Kimura I, et al. Neutralisation sensitivity of SARS-CoV-2
407 omicron subvariants to therapeutic monoclonal antibodies. *Lancet Infect Dis*. 2022;22(7):942-
408 943.
- 409 12. Meng B, Abdullahi A, Ferreira IATM, et al. Altered TMPRSS2 usage by SARS-CoV-2
410 Omicron impacts infectivity and fusogenicity. *Nature*. 2022;603(7902):706-714.
- 411 13. Unoh Y, Uehara S, Nakahara K, et al. Discovery of S-217622, a noncovalent oral SARS-
412 CoV-2 3CL protease inhibitor clinical candidate for treating COVID-19. *J Med Chem*.
413 2022;65(9):6499-6512.
- 414 14. Uraki R, Kiso M, Iida S, et al. Characterization and antiviral susceptibility of SARS-
415 CoV-2 Omicron BA.2. *Nature*. 2022;607(7917):119-127.
- 416 15. Sasaki M, Tabata K, Kishimoto M, et al. S-217622, a SARS-CoV-2 main protease
417 inhibitor, decreases viral load and ameliorates COVID-19 severity in hamsters. *Sci Transl Med*.
418 2023;15(679):eabq4064.
- 419 16. Kawashima S, Matsui Y, Adachi T, et al. Ensitrelvir is effective against SARS-CoV-2
420 3CL protease mutants circulating globally. *Biochem Biophys Res Commun*. 2023;645:132-136.
- 421 17. Uraki R, Ito M, Kiso M, et al. Antiviral and bivalent vaccine efficacy against an omicron
422 XBB.1.5 isolate. *Lancet Infect Dis*. 2023;23(4):402-403. doi: 10.1016/S1473-3099(23)00070-1.
- 423 18. Mukae H, Yotsuyanagi H, Ohmagari N, et al. A randomized phase 2/3 study of
424 ensitrelvir, a novel oral SARS-CoV-2 3C-like protease inhibitor, in Japanese patients with mild-

- 425 to-moderate COVID-19 or asymptomatic SARS-CoV-2 infection: results of the phase 2a part.
426 *Antimicrob Agents Chemother.* 2022;66(10):e0069722.
- 427 19. Mukae H, Yotsuyanagi H, Ohmagari N, et al. Efficacy and safety of ensitrelvir in patients
428 with mild-to-moderate COVID-19: the phase 2b part of a randomized, placebo-controlled, phase
429 2/3 study. *Clin Infect Dis.* 2022;76(8):1403-1411. doi: 10.1093/cid/ciac933.
- 430 20. Yotsuyanagi H, Ohmagari N, Doi Y, et al. A phase 2/3 study of S-217622 in participants
431 with SARS-CoV-2 infection (phase 3 part). *Medicine (Baltimore).* 2023;102(8):e33024.
- 432 21. U.S. Food and Drug Administration. Assessing COVID-19-related symptoms in
433 outpatient adult and adolescent subjects in clinical trials of drugs and biological products for
434 COVID-19 prevention or treatment. [https://www.fda.gov/regulatory-information/search-fda-](https://www.fda.gov/regulatory-information/search-fda-guidance-documents/assessing-covid-19-related-symptoms-outpatient-adult-and-adolescent-subjects-clinical-trials-drugs)
435 [guidance-documents/assessing-covid-19-related-symptoms-outpatient-adult-and-adolescent-](https://www.fda.gov/regulatory-information/search-fda-guidance-documents/assessing-covid-19-related-symptoms-outpatient-adult-and-adolescent-subjects-clinical-trials-drugs)
436 [subjects-clinical-trials-drugs](https://www.fda.gov/regulatory-information/search-fda-guidance-documents/assessing-covid-19-related-symptoms-outpatient-adult-and-adolescent-subjects-clinical-trials-drugs). Accessed June 29, 2023.
- 437 22. Hiroshima Prefectural Health and Welfare Bureau. Findings from the analysis of J-
438 SPEED (Surveillance in Post Extreme Emergencies and Disasters, Japan version) data: wave 7
439 analysis. <https://www.mhlw.go.jp/content/10900000/000975398.pdf>. Japanese. Accessed June
440 29, 2023.
- 441 23. Shimizu R, Sonoyama T, Fukuhara T, Kuwata A, Matsuo Y, Kubota R. Safety,
442 tolerability, and pharmacokinetics of the novel antiviral agent ensitrelvir fumaric acid, a SARS-
443 CoV-2 3CL protease inhibitor, in healthy adults. *Antimicrob Agents Chemother.*
444 2022;66(10):e0063222.
- 445 24. Hyams C, Challen R, Marlow R, et al. Severity of Omicron (B.1.1.529) and Delta
446 (B.1.617.2) SARS-CoV-2 infection among hospitalised adults: a prospective cohort study in
447 Bristol, United Kingdom. *Lancet Reg Health Eur.* 2023;25:100556.

- 448 25. Butler CC, Hobbs FDR, Gbinigie OA, et al. Molnupiravir plus usual care versus usual
449 care alone as early treatment for adults with COVID-19 at increased risk of adverse outcomes
450 (PANORAMIC): an open-label, platform-adaptive randomised controlled trial. *Lancet*.
451 2023;401(10373):281-293.
- 452 26. Najjar-Debbiny R, Gronich N, Weber G, et al. Effectiveness of molnupiravir in high-risk
453 patients: a propensity score matched analysis. *Clin Infect Dis*. 2023;76(3):453-460.
- 454 27. ClinicalTrials.gov. Evaluation of protease inhibition for COVID-19 in standard-risk
455 patients (EPIC-SR). ClinicalTrials.gov identifier: NCT05011513.
456 <https://clinicaltrials.gov/ct2/show/NCT05011513>. Accessed June 29, 2023.
- 457 28. Hammond J, Leister-Tebbe H, Gardner A, et al. 1156. Sustained alleviation and
458 resolution of targeted COVID-19 symptoms with nirmatrelvir/ritonavir versus placebo. *Open*
459 *Forum Infect Dis*. 2022;9(Suppl 2):ofac492.994. doi: 10.1093/ofid/ofac492.994.
- 460 29. U.S. Food and Drug Administration. Meeting of the Antimicrobial Drugs Advisory
461 Committee March 16, 2023: FDA Briefing Document.
462 <https://www.fda.gov/media/166197/download>. Accessed June 29, 2023.
463

464 **FIGURES**

465 **Figure 1. Patient Disposition**

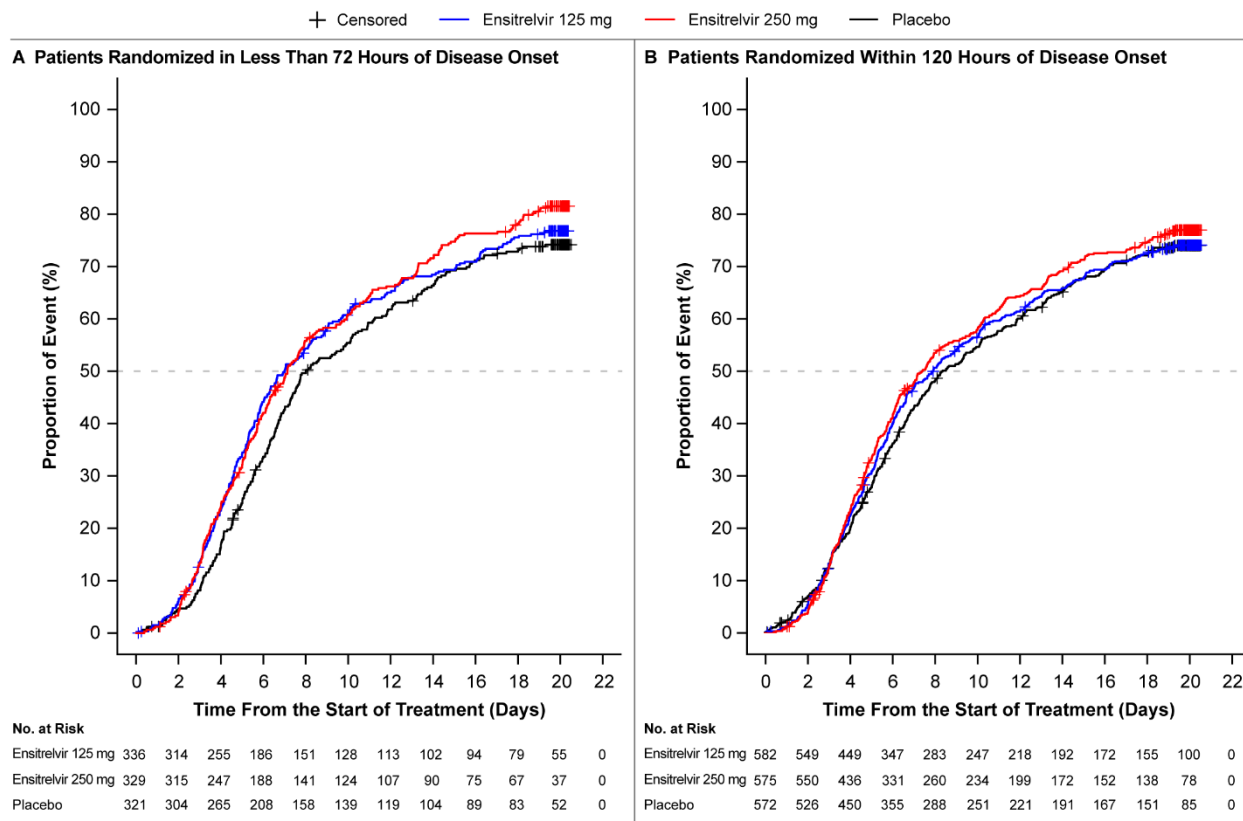


466

467 The intention-to-treat population comprised all patients who tested positive for SARS-CoV-2 viral RNA at baseline, as confirmed by
 468 an RT-PCR test based on the nasopharyngeal swab sample. The modified intention-to-treat population comprised all patients who
 469 tested positive for SARS-CoV-2 viral RNA and who had detectable SARS-CoV-2 viral titer at baseline.

470 RT-PCR, reverse transcription-polymerase chain reaction; SARS-CoV-2, severe acute respiratory syndrome coronavirus 2.

471 **Figure 2. Time to Resolution of Five COVID-19 Symptoms (Intention-to-Treat Population)**



472

473 The analysis was performed for all patients who tested positive for SARS-CoV-2 viral RNA at

474 baseline. Patients randomized in less than 72 hours of disease onset in the ensitrelvir 125-mg

475 group were defined as the primary analysis population. A Peto-Prentice generalized Wilcoxon

476 test was applied to test the statistical significance vs placebo. The test was stratified by SARS-

477 CoV-2 vaccination history (yes or no) for patients randomized in less than 72 hours (panel A)

478 and time from onset to randomization (<72 hours or ≥72 hours) and SARS-CoV-2 vaccination

479 history (yes or no) for patients randomized within 120 hours (panel B). The five COVID-19

480 symptoms were stuffy or runny nose, sore throat, cough, feeling hot or feverish, and low energy

481 or tiredness. Among patients randomized within 120 hours of disease onset (panel B), the median

482 difference in the time to resolution of the five COVID-19 symptoms between ensitrelvir 125 mg

483 and placebo was -10.6 hours (95% confidence interval, -56.9 to 21.3).

484 COVID-19, coronavirus disease 2019; RNA, ribonucleic acid; SARS-CoV-2, severe acute
485 respiratory syndrome coronavirus 2.
486

487 TABLES

488 Table 1. Demographic and Clinical Characteristics of the Patients at Baseline (Intention-to-Treat Population)^a

Characteristic	Patients Randomized in Less Than 72 Hours of Disease Onset			Patients Randomized Within 120 Hours of Disease Onset		
	Ensitrelvir 125 mg (N=347) ^b	Ensitrelvir 250 mg (N=340)	Placebo (N=343)	Ensitrelvir 125 mg (N=603)	Ensitrelvir 250 mg (N=595)	Placebo (N=600)
Male sex — no. (%)	193 (55.6)	185 (54.4)	174 (50.7)	318 (52.7)	323 (54.3)	311 (51.8)
Mean (SD) age — years	35.7 (12.5)	35.3 (12.2)	34.7 (12.2)	35.9 (12.7)	35.9 (12.7)	35.3 (12.6)
Asian race — no. (%)	345 (99.4)	338 (99.4)	341 (99.4)	601 (99.7)	593 (99.7)	598 (99.7)
COVID-19 vaccination history — no. (%)						
≥1 vaccination	322 (92.8)	313 (92.1)	315 (91.8)	562 (93.2)	551 (92.6)	553 (92.2)
≥2 vaccinations	316 (91.1)	311 (91.5)	310 (90.4)	554 (91.9)	547 (91.9)	545 (90.8)
≥3 vaccinations	183 (52.7)	185 (54.4)	177 (51.6)	284 (47.1)	295 (49.6)	283 (47.2)
Mean (SD) SARS-CoV-2 viral RNA level — log ₁₀ copies/mL ^c	6.98 (1.01)	6.89 (1.01)	6.93 (0.99)	6.83 (1.05)	6.73 (1.08)	6.77 (1.07)
Patients with any risk factors for severe disease — no. (%) ^d	107 (30.8)	90 (26.5)	89 (25.9)	174 (28.9)	167 (28.1)	152 (25.3)
Prior acetaminophen use — no. (%)	108 (31.1)	90 (26.5)	99 (28.9)	216 (35.8)	191 (32.1)	207 (34.5)
Mean (SD) oxygen saturation — % ^e	97.3 (1.1)	97.2 (2.0)	97.3 (1.2)	97.4 (1.1)	97.3 (1.6)	97.3 (1.1)
SARS-CoV-2 variant — no. (%)						
BA.1/21K (omicron)	61 (17.6)	57 (16.8)	54 (15.7)	131 (21.7)	130 (21.8)	115 (19.2)
BA.2/21L (omicron)	242 (69.7)	232 (68.2)	241 (70.3)	401 (66.5)	376 (63.2)	407 (67.8)
BA.1.1.529/21M (omicron)	2 (0.6)	0 (0.0)	2 (0.6)	2 (0.3)	1 (0.2)	2 (0.3)
BA.4/22A (omicron)	1 (0.3)	1 (0.3)	0 (0.0)	1 (0.2)	1 (0.2)	0 (0.0)
BA.5/22B (omicron)	4 (1.2)	5 (1.5)	5 (1.5)	5 (0.8)	7 (1.2)	8 (1.3)
BA.2.12.1/22C (omicron)	1 (0.3)	2 (0.6)	0 (0.0)	1 (0.2)	5 (0.8)	2 (0.3)
Recombinant	30 (8.6)	38 (11.2)	33 (9.6)	52 (8.6)	64 (10.8)	50 (8.3)
Not tested	2 (0.6)	1 (0.3)	2 (0.6)	2 (0.3)	2 (0.3)	3 (0.5)
No result	4 (1.2)	4 (1.2)	6 (1.7)	8 (1.3)	9 (1.5)	13 (2.2)
Patients with COVID-19 symptoms — no. (%) ^f						
Respiratory symptoms						

Characteristic	Patients Randomized in Less Than 72 Hours of Disease Onset			Patients Randomized Within 120 Hours of Disease Onset		
	Ensitreivir 125 mg (N=347) ^b	Ensitreivir 250 mg (N=340)	Placebo (N=343)	Ensitreivir 125 mg (N=603)	Ensitreivir 250 mg (N=595)	Placebo (N=600)
Stuffy or runny nose	283 (83.5)	248 (74.3)	247 (75.8)	506 (86.1)	468 (80.6)	464 (80.0)
Sore throat	300 (88.5)	292 (87.4)	286 (87.7)	520 (88.4)	522 (89.7)	512 (88.3)
Shortness of breath	95 (28.0)	90 (26.9)	66 (20.2)	170 (28.9)	158 (27.1)	142 (24.5)
Cough	291 (85.8)	280 (83.8)	287 (88.0)	518 (88.1)	512 (88.0)	518 (89.3)
Systemic symptoms						
Low energy or tiredness	265 (78.2)	248 (74.3)	229 (70.2)	446 (75.9)	407 (69.9)	408 (70.3)
Muscle or body aches	207 (61.1)	209 (62.6)	189 (58.0)	341 (58.0)	333 (57.2)	315 (54.3)
Headache	219 (64.6)	221 (66.2)	213 (65.3)	376 (63.9)	368 (63.2)	367 (63.3)
Chills or shivering	223 (65.8)	172 (51.5)	167 (51.2)	325 (55.3)	276 (47.4)	289 (49.8)
Feeling hot or feverish	247 (72.9)	234 (70.1)	235 (72.1)	378 (64.3)	379 (65.1)	385 (66.4)
Digestive symptoms						
Nausea	49 (14.5)	38 (11.4)	37 (11.3)	81 (13.8)	75 (12.9)	76 (13.1)
Vomiting	18 (5.3)	14 (4.2)	12 (3.7)	33 (5.6)	24 (4.1)	24 (4.1)
Diarrhea	57 (16.8)	49 (14.7)	51 (15.6)	116 (19.7)	104 (17.9)	104 (17.9)
Sensation disturbance						
Anosmia	47 (13.9)	54 (16.2)	38 (11.7)	102 (17.3)	102 (17.5)	93 (16.0)
Dysgeusia	52 (15.3)	50 (15.0)	49 (15.0)	105 (17.9)	91 (15.6)	99 (17.1)

489 ^a Data for all patients who tested positive for SARS-CoV-2 viral RNA at baseline are shown.

490 ^b Primary analysis population.

491 ^c N=345 for the ensitreivir 125-mg group, N=336 for the ensitreivir 250-mg group, and N=341 for the placebo group in patients randomized in
492 less than 72 hours of disease onset. N=600 for the ensitreivir 125-mg group, N=589 for the ensitreivir 250-mg group, and N=597 for the placebo
493 group in patients randomized within 120 hours of disease onset.

494 ^d Age ≥ 65 years, BMI ≥ 30 kg/m², cancer, cerebrovascular disease, chronic kidney disease, chronic lung disease, chronic liver disease, cystic
495 fibrosis, diabetes mellitus, disabilities, heart conditions, hypertension, dyslipidemia, human immunodeficiency virus, mental health disorders,
496 neurologic conditions, primary immunodeficiencies, smoking, solid organ or hematopoietic cell transplantation, tuberculosis, and use of
497 corticosteroids or other immunosuppressive medications were considered the risk factors for severe disease.

498 ^e N=335 for the ensitrelvir 125-mg group, N=327 for the ensitrelvir 250-mg group, and N=322 for the placebo group in patients randomized in
499 less than 72 hours of disease onset. N=584 for the ensitrelvir 125-mg group, N=573 for the ensitrelvir 250-mg group, and N=574 for the placebo
500 group in patients randomized within 120 hours of disease onset.

501 ^f N=339 for the ensitrelvir 125-mg group, N=334 for the ensitrelvir 250-mg group, and N=326 for the placebo group in patients randomized in
502 less than 72 hours of disease onset. N=588 for the ensitrelvir 125-mg group, N=582 (581 for stuffy or runny nose) for the ensitrelvir 250-mg
503 group, and N=580 for the placebo group in patients randomized within 120 hours of disease onset.

504 BMI, body mass index; COVID-19, coronavirus disease 2019; SARS-CoV-2, severe acute respiratory syndrome coronavirus 2; SD, standard
505 deviation.

506

507 **Table 2. Change from Baseline to Day 4 in SARS-CoV-2 Viral RNA Levels, Time to Resolution of the 12 COVID-19 Symptoms, and**
 508 **Time to Resolution of the 14 COVID-19 Symptoms (Intention-to-Treat Population, Patients Randomized in Less Than 72 Hours of**
 509 **Disease Onset)**

Variable	Ensitrelvir 125 mg (N=347) ^a	Ensitrelvir 250 mg (N=340)	Placebo (N=343)
Change from baseline to day 4 in SARS-CoV-2 viral RNA levels ^b			
n	340	333	337
LS mean (SE) — log ₁₀ copies/mL	-2.48 (0.08)	-2.49 (0.08)	-1.01 (0.08)
Difference from placebo, LS mean (SE)	-1.47 (0.08)	-1.48 (0.08)	
95% CI	-1.63 to -1.31	-1.64 to -1.32	
P value	<.001	<.001	
Time to resolution of the 12 COVID-19 symptoms ^c			
n	336	330	321
Median (95% CI) — hours	179.2 (152.1 to 212.1)	184.9 (168.9 to 226.2)	213.2 (185.8 to 253.8)
Difference from placebo, median (95% CI)	-34.0 (-85.9 to 8.3)	-28.3 (-72.8 to 14.7)	
P value ^d	.07	.08	
Time to resolution of the 14 COVID-19 symptoms ^c			
N	336	330	321
Median (95% CI) — hours	187.8 (156.4 to 217.0)	190.3 (171.4 to 244.0)	231.8 (192.1 to 265.8)
Difference from placebo, median (95% CI)	-44.1 (-95.3 to 4.5)	-41.5 (-81.2 to 27.3)	
P value ^d	.03	.05	

510 ^a Primary analysis population.

511 ^b Analysis by ANCOVA using baseline SARS-CoV-2 viral RNA and SARS-CoV-2 vaccination history (yes or no) as covariates.

512 ^c Low energy or tiredness, muscle or body aches, headache, chills or shivering, feeling hot or feverish, stuffy or runny nose, sore throat, cough,
 513 shortness of breath (difficulty breathing), nausea, vomiting, and diarrhea.

514 ^d Based on a Peto-Prentice generalized Wilcoxon test stratified by SARS-CoV-2 vaccination history (yes or no).

515 ^e Low energy or tiredness, muscle or body aches, headache, chills or shivering, feeling hot or feverish, stuffy or runny nose, sore throat, cough,
516 shortness of breath (difficulty breathing), nausea, vomiting, diarrhea, anosmia, and dysgeusia.

517 ANCOVA, analysis of covariance; CI, confidence interval; COVID-19, coronavirus disease 2019; LS, least squares; SARS-CoV-2, severe acute
518 respiratory syndrome coronavirus 2; SE, standard error.

519

520 **Table 3. Summary of Adverse Events (Safety Analysis Population)^a**

Adverse event category	Ensitrelvir 125 mg (N=604)	Ensitrelvir 250 mg (N=599)	Placebo (N=605)
Patients with any adverse event — no. (%)	267 (44.2)	321 (53.6)	150 (24.8)
Patients with any treatment-related adverse event — no. (%)	148 (24.5)	217 (36.2)	60 (9.9)
Patients with any serious adverse event — no. (%) ^b	1 (0.2)	0	1 (0.2)
Patients with adverse events leading to death — no. (%)	0	0	0
Patients with adverse events leading to treatment discontinuation — no. (%) ^c	4 (0.7)	6 (1.0)	2 (0.3)
Adverse events occurring in $\geq 2\%$ of patients in either group — no. (%)			
Headache	13 (2.2)	20 (3.3)	14 (2.3)
Diarrhea	6 (1.0)	9 (1.5)	12 (2.0)
High-density lipoprotein decreased	188 (31.1)	231 (38.6)	23 (3.8)
Blood triglycerides increased	49 (8.1)	74 (12.4)	32 (5.3)
Blood bilirubin increased	36 (6.0)	56 (9.3)	6 (1.0)
Blood cholesterol decreased	20 (3.3)	28 (4.7)	3 (0.5)
Bilirubin conjugated increased	15 (2.5)	20 (3.3)	3 (0.5)
Blood creatine phosphokinase increased	14 (2.3)	8 (1.3)	11 (1.8)
Blood lactate dehydrogenase increased	6 (1.0)	15 (2.5)	6 (1.0)
Aspartate aminotransferase increased	4 (0.7)	9 (1.5)	12 (2.0)
Treatment-related adverse events occurring in $\geq 2\%$ of patients in either group — no. (%)			
Headache	4 (0.7)	13 (2.2)	2 (0.3)
High-density lipoprotein decreased	111 (18.4)	157 (26.2)	9 (1.5)
Blood triglycerides increased	16 (2.6)	37 (6.2)	17 (2.8)
Blood bilirubin increased	17 (2.8)	35 (5.8)	3 (0.5)
Blood cholesterol decreased	8 (1.3)	12 (2.0)	1 (0.2)

521 ^a Data for all patients who received at least one ensitrelvir or placebo dose are shown.522 ^b Both serious adverse events were judged as not treatment related and recovered with appropriate intervention.

523 ^c Among the adverse events leading to treatment discontinuation, mild eczema and mild vomiting in one patient each in the ensitrelvir 125-mg
524 group, mild rash and moderate rash in one patient each in the ensitrelvir 250-mg group, and moderate hypoesthesia and mild muscular weakness
525 in one patient in the placebo group were judged as treatment related by the investigator. All treatment-related adverse events leading to treatment
526 discontinuation were deemed to be resolving or resolved after study discontinuation.

527