

# Jensen

## Supplementary Table S1

### i3N induction medium (IM)

ITEM	COMPANY	IDENTIFIER	STORAGE CONCENTRATION	FINAL CONCENTRATION
DMEM/F12	Thermo Fisher Scientific	Cat# 21331046	basal medium	basal medium
HEPES	Thermo Fisher Scientific	Cat# 15630106	1M	15mM
N-2 Supplement	Thermo Fisher Scientific	Cat# 17502048	100X	1X
GlutaMAX™	Thermo Fisher Scientific	Cat# 35050061	100X	1X
MEM Non-Essential Amino Acids	Thermo Fisher Scientific	Cat# 11140035	100X	1X

### i3N cortical neuron medium (CNM)

ITEM	COMPANY	IDENTIFIER	STORAGE CONCENTRATION	FINAL CONCENTRATION
BrainPhys™ Neuronal Medium	STEMCELL Technologies	Cat# 5790	basal medium	basal medium
B-27™ Supplement, minus vitamin A	Thermo Fisher Scientific	Cat# 12587-010	50X	1X
BDNF	PeproTech	Cat# 450-02	10 µg/mL	10 ng/mL
NT3	PeproTech	Cat# 450-03	10 µg/mL	10 ng/mL
Laminin Mouse Protein	Thermo Fisher Scientific	Cat# 23017015	1 mg/mL	1 µg/mL

### qPCR primers

GENE	NCBI ID	FORWARD SEQUENCE 5'-3'	REVERSE SEQUENCE 5'-3'
<i>GAPDH</i>	2597	AGCCACATCGCTCAGACAC	GCCCAATACGACCAAATCC
<i>SORL1</i>	6653	CCAACCTGAAGATGGGTCATA	ACAGCAGCAACATCCGTAGAT

### WB antibodies

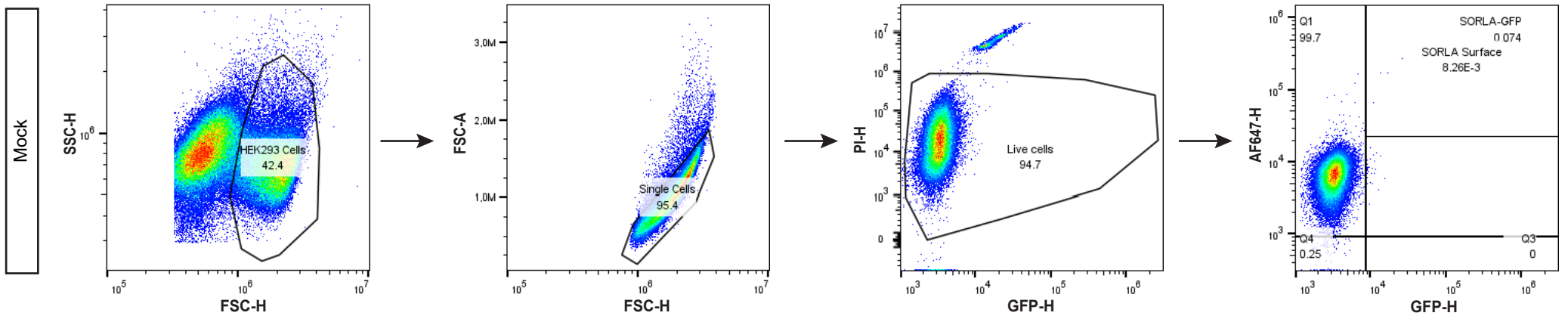
ANTIBODY	DILUTION	COMPANY	IDENTIFIER
β-Actin (8H10D10)	1:10,000	Cell Signaling Technology	Cat# 3700; RRID: AB_2242334
LR11 (SORLA)	1:4,000	BD Biosciences	Cat# 611861; RRID: AB_399341
EEA1 (G-4)	1:500	Santa Cruz Biotechnology	Cat# sc-137130; RRID: AB_2246349
Anti-mouse IgG, HRP	1:3,000	Cell Signaling Technology	Cat# 7076; RRID: AB_330924

**Jensen**  
**Supplementary Table S2**

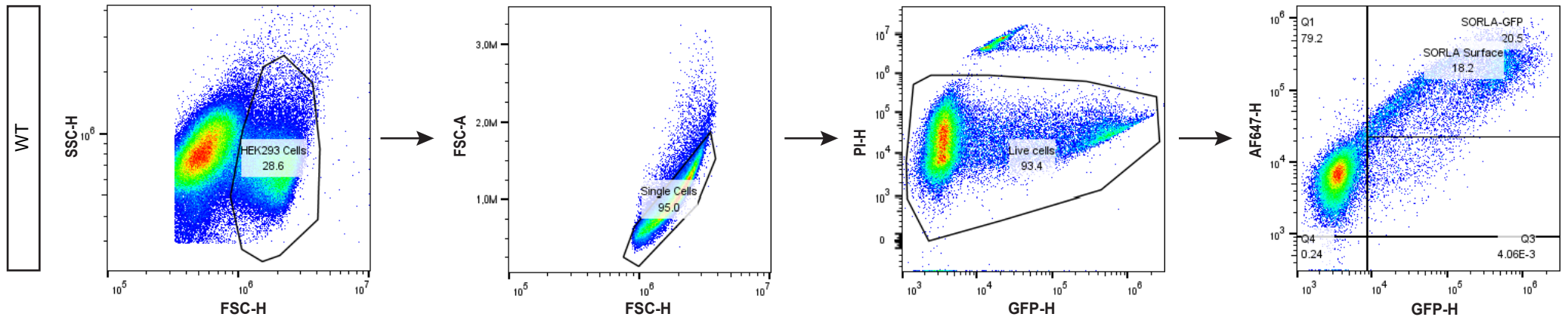
ID	Marker	Genomic location		Distance to SORL1 (kb)	Heterozygosity	Family 3 proband		Family 1 proband		Family 2 proband		CON		CON		CON	
		Start	End														
1	D11S4127	117.644.118	117.644.500	3679	0,72	94	102	100	100	96	98	96	100	92	100	96	98
2	D11S924	119.437.791	119.438.160	1885	0,70	248	250	250	250	246	246	246	246	250	254	248	250
3	D11S925	120.828.211	120.828.546	495	0,85	174	199	174	197	174	195	174	174	174	193	174	193
	SORL1	121.322.912	121.504.471			SORL1											
4	D11S1377	122.451.716	122.451.852	829	0,78	229	235	223	231	231	231	233	237	229	231	229	231
5	D11S933	124.671.980	124.672.327	3349	0,80	413	423	417	421	413	421	413	427	421	423	423	423
6	D11S975	125.828.395	125.828.653	4505	0,79	223	225	223	233	223	233	223	223	233	237	223	233
7	D11S4110	126.971.669	126.971.788	5649	0,71	343	343	343	353	343	343	349	353	343	351	351	353

**Jensen**  
**Supplementary Figure S1**

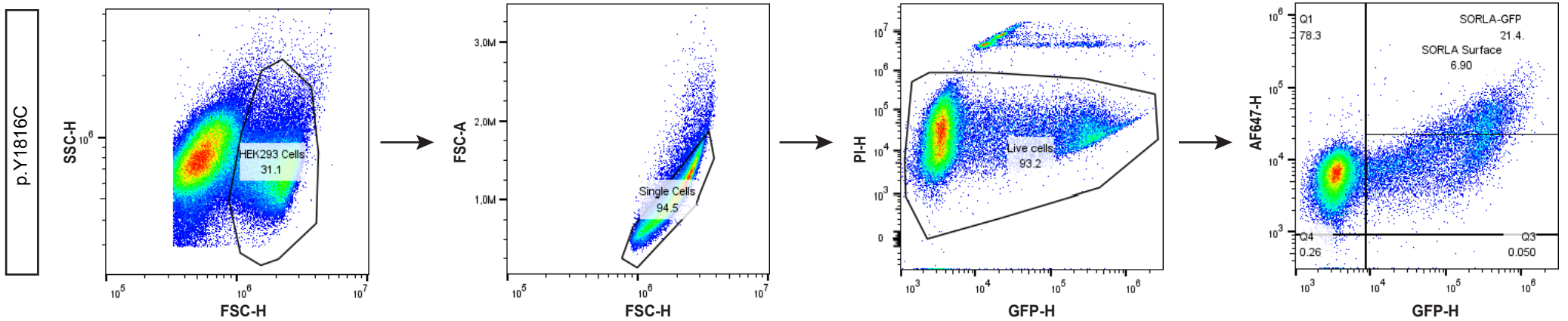
**A**



**B**



**C**



**Jensen**  
**Supplementary Figure S2**

