

1 **Nationally representative prevalence and determinants of post-acute**
2 **sequelae of SARS-CoV-2 infection (Long COVID) amongst Mexican adults in**
3 **2022**

4 Omar Yaxmehen Bello-Chavolla^{1*}, Carlos A. Fermín-Martínez^{1,2*}, Luisa Fernández-
5 Chirino¹, Daniel Ramírez-García^{1,3}, Arsenio Vargas-Vázquez³, Martín Roberto Basile-
6 Alvarez^{1,3}, Paulina Sánchez Castro^{1,3}, Alejandra Núñez-Luna^{1,3}, Neftali Eduardo Antonio-
7 Villa⁴

8 ****These authors contributed equally to the drafting of this work***

9

10 ¹Research Division, Instituto Nacional de Geriátría, Mexico City, Mexico. ²MD/PhD
11 (PECEM) Program, Facultad de Medicina, Universidad Nacional Autónoma de México,
12 Mexico City, Mexico. ³Facultad de Medicina, Universidad Nacional Autónoma de México,
13 Mexico City, Mexico. ⁴Department of Endocrinology, Instituto Nacional de Cardiología
14 Ignacio Chávez, Mexico City, Mexico.

15

16

17

18

19 **Correspondence:**

20 Omar Yaxmehen Bello-Chavolla. Division of Research. Instituto Nacional de Geriátría.
21 Anillo Perif. 2767, San Jerónimo Lídice, La Magdalena Contreras, 10200, Mexico City,
22 Mexico. Phone: +52 (55) 5548486885. E-mail: oyaxbell@yahoo.com.mx

23

24

25

26 **CONFLICT OF INTERESTS:** The authors declare that they have no conflict of interests.

27 4,049 text words; 44 references; 4 figures, 1 tables.

28 **Running headline:** Long COVID prevalence and determinants in Mexico

29 **ABSTRACT (248 WORDS)**

30 **OBJECTIVE:** To characterize the epidemiology of post-acute sequelae after SARS-CoV-2
31 infection (PASC) in Mexico during 2022 and identify potential predictors of PASC
32 prevalence using nationally representative data.

33 **METHODS:** We analyzed data from the 2022 Mexican National Health and Nutrition
34 Survey (ENSANUT) totaling 24,434 participants, representing 85,521,661 adults ≥ 20
35 years. PASC was defined using both the World Health Organization definition and a PASC
36 score ≥ 12 . Estimates of PASC prevalence were stratified by age, sex, rural vs. urban
37 setting, social lag quartiles, number of reinfections, vaccination status and by periods of
38 predominance of SARS-CoV-2 circulating variants. Predictors of PASC were assessed
39 using logistic regression models adjusted by survey weights.

40 **RESULTS:** Persistent symptoms after SARS-CoV-2 infection were reported by 12.44%
41 (95%CI 11.89-12.99) of adults ≥ 20 years in Mexico during 2022. The most common
42 persistent symptoms were musculoskeletal pain, headache, cough, loss of smell or taste,
43 fever, post-exertional malaise, brain fog, anxiety, chest pain, and sleep disorders. PASC
44 was present in 21.21% (95%CI 7.71-9.65) subjects with previously diagnosed COVID-19.
45 Over 28.6% patients with PASC reported symptoms persistence ≥ 6 months and 14.05%
46 reported incapacitating symptoms. Higher PASC prevalence was associated with SARS-
47 CoV-2 reinfections, depressive symptoms and living in states with high social lag. PASC
48 prevalence, particularly its more severe forms, decreased with COVID-19 vaccination and
49 for infections during periods of Omicron variant predominance.

50 **CONCLUSIONS:** PASC implies a significant public health burden in Mexico as the
51 COVID-19 pandemic transitions into endemicity. Promoting reinfection prevention and
52 booster vaccination may be useful to reduce PASC burden.

53 **Keywords:** Long COVID; PASC; Mexico; COVID-19; sequelae

54

55 INTRODUCTION

56 Post-acute persistent symptoms of severe acute coronavirus 2 (SARS-CoV-2) infection
57 remain a challenge to reduce the burden of SARS-CoV-2 in affected patients as the
58 coronavirus disease (COVID-19) pandemic progresses towards endemicity (1). The
59 definition of post-acute sequelae after SARS-CoV-2 infection (PASC) is still evolving given
60 heterogeneous patient profiles, with other terms also recognizing it as post-acute COVID-
61 19 condition, long COVID, and post-acute COVID-19 syndrome (2). A Delphi consensus
62 by the World Health Organization defined it as a condition affecting individuals with
63 suspected or confirmed SARS-CoV-2 infection exhibiting persistent symptoms lasting for
64 at least two months without an alternative pathophysiological explanation (3). Recently,
65 Thaweethai et al. developed a self-reported symptom-based definition to better
66 characterize persistent COVID-19 symptoms across cohorts and provide another overview
67 of the epidemiology of PASC (4). To this date, reports on the epidemiology of persistent
68 symptoms are scarce, particularly in Latin American countries, which hinders recognition
69 of the magnitude of the problem and implementation of public policies aimed at reducing
70 PASC burden (5).

71 Mexico is one of the countries with the highest morbidity and mortality related to COVID-19
72 world-wide (6). A landscape of high cardio-metabolic burden with marked social
73 inequalities increased the impact of the pandemic and led to sustained excess deaths,
74 which were ameliorated with the availability of vaccines (7–9). Despite the well-
75 characterized acute impact of the SARS-CoV-2 pandemic in low- and middle-income
76 settings, information regarding the impact of debilitating chronic sequelae of SARS-CoV-2
77 infection in these settings is lacking. In Mexico, few reports have evaluated the impact of
78 PASC, particularly focusing on cases with severe COVID-19 (10,11). However, nationally
79 representative estimates of persistent COVID-19 symptoms and particularly PASC as

80 defined by current criteria in Mexico remain unreported. Here, we aimed to estimate the
81 prevalence of persistent COVID-19 symptoms and post-acute sequelae of SARS-CoV-2
82 infection (PASC) using a nationally representative sample of Mexican adults for the year
83 2022. We also aimed to evaluate potential correlates of PASC prevalence including
84 sociodemographic and infection-related determinants to characterize vulnerable groups
85 and potential areas of intervention to ameliorate the long-term burden of COVID-19 in
86 Mexico.

87 **METHODS**

88 Study design

89 We analyzed data from the Mexican National Health and Nutrition Survey (ENSANUT) for
90 the year 2022. Briefly, ENSANUT is a population-based survey that aims to assess the
91 health and nutritional status of Mexican adults. ENSANUT is representative at a national,
92 regional, and rural/urban level, as it uses two-stage probabilistic cluster stratified sampling
93 based on households and individuals. Participants underwent a comprehensive
94 questionnaire collecting demographic, socioeconomic, and health-related data, and a
95 physical exam including measurement of blood pressure and anthropometry. ENSANUT
96 2022 was collected from July to December 2022 in 10,160 households (response rate of
97 73%) which amounts to 11,472 complete interviews in adults ≥ 20 years old (12). This
98 survey additionally aimed to investigate health and well-being of Mexican adults during the
99 COVID-19 pandemic and a random subsample of 5,971 adults ≥ 20 years old provided a
100 capillary blood sample to detect antibodies for SARS-CoV-2 infection. A second
101 subsample (n=2,092) had an additional biochemical evaluation with venous blood samples
102 for glycated hemoglobin (HbA1c), fasting glucose, and a fasting lipid profile. A complete
103 flowchart of participant selection is outlined in **Supplementary Materials**.

104 SARS-CoV-2 seroprevalence

105 Seropositivity to SARS-CoV-2 was evaluated using an Elecsys detection assay for IgG
106 against the N-protein (SARS-CoV-2 Nucleocapsid, #09 203 079 190, Roche-N) validated
107 by the Institute for Epidemiological and Diagnostic Reference. Samples were considered
108 positive if quantification was $\geq 0.72.0$ U/ml (13). COVID-19 seroprevalence was estimated
109 using population sample weights with the *survey* R package.

110 Variable definitions

111 *Persistent COVID-19 symptoms*

112 Previously diagnosed COVID-19 was defined by self-report among individuals who
113 answered, “at least once” to the question: “Since February 2020, how many times have
114 you been diagnosed with COVID-19 by health personnel?” Amongst individuals with at
115 least one previous COVID-19 diagnosis, persistent symptoms after SARS-CoV-2 infection
116 were asked (3) using the question: “Regarding the last time you had COVID, did you
117 continue to present any of these symptoms / sequelae one month after your illness
118 began?” and interrogated the presence of the following symptoms: cough, fatigue or
119 tiredness, anxiety, depression, fever, difficulty sleeping, kidney complications, loss of
120 appetite, weight loss, headache, dizziness, muscle or joint pain, difficulty breathing
121 (dyspnea), shortness of breath, chest pain, vomiting or diarrhea (gastrointestinal
122 symptoms), loss or decrease in smell, loss or decrease in taste, difficulty thinking or
123 concentrating or other symptoms, including post-exertional malaise, which we defined as
124 symptoms which worsen with activity and impede normal functioning. Participants were
125 also asked to clarify if the symptoms persisted for less than an additional month, from one
126 to three months, from three to six months, more than 6 months, or are still present.

127 *Post-acute COVID-19 sequelae*

128 We used the definition reached by Delphi consensus from the World Health Organization,
129 which defines PASC, which defines it as the presence of at least one persistent symptom,

130 in individuals with previously diagnosed SARS-CoV-2 infection, and which referred
131 persistent symptoms lasting ≥ 3 months from the previous COVID-19 diagnosis. Based on
132 this, we classified persistent symptoms into subacute or ongoing symptomatic COVID-19,
133 defined as the presence of any persistent symptom 4-12 weeks beyond acute COVID-19
134 and PASC(14). Furthermore, based on a recent definition by Thaweethai et al. we
135 calculated the PASC score, which defined the presence of PASC with a score ≥ 12 points
136 to assess its prevalence in this population (4). Symptoms such as palpitations, chronic
137 thirst, decreased sexual desire or capacity, or abnormal movements were not considered
138 in ENSANUT 2022 and were not included for score calculation. This complementary
139 definition was included as a sensitivity analysis and was considered irrespective of
140 symptom duration.

141 *Modifying factors*

142 We evaluated age categories of 10-year intervals (20-29, 30-39, 40-49, 50-59, 60-69 or
143 ≥ 70 years), sex, rural/urban area, smoking status and presence of diabetes and
144 hypertension as modifying factors of PASC prevalence. The following factors were also
145 considered to evaluate components of SARS-CoV-2 infection:

- 146 • **SARS-CoV-2 reinfection** – Defined as having been diagnosed with COVID-19
147 more than one time by healthcare personnel (self-report).
- 148 • **Predominant SARS-CoV-2 variants** – SARS-CoV-2 infection was assumed to be
149 most likely caused by the predominant variant based on the date of symptom
150 onset. Based on data submitted to GISAID (48), from March 3rd, 2020, until
151 December 30th, 2020, the predominant SARS-CoV-2 variant was the ancestral
152 strain, followed by the predominance of the B.1.1.519 variant until June 6th, 2021,
153 the B.1.617.2 (Delta) variant until December 6th, 2021. B.1.1.529.1 (Omicron)
154 subvariant was considered predominant from December 7th, 2022, onwards (15).

155 For modeling, COVID-19 were classified into those likely caused by the Omicron
156 variant or otherwise.

157 • **COVID-19 vaccination** – Vaccination was defined by self-report among individuals
158 who answered “yes” to the question: “Have you been vaccinated for COVID-19?”
159 and further questioned if receiving one, two, three or four vaccine doses.

160 • **Social lag** – We used data from the National Council for Evaluation of Social
161 Development Policy (CONEVAL), which provides state-level estimates of the 2020
162 social lag index (SLI), which is a composite measure of access to education, health
163 care, dwelling quality, and basic services in Mexico (16). To assess marginalization
164 independently of urbanization, we extracted mean population density from each
165 state and regressed it onto SLI and obtained the residuals which represent a
166 density-independent social lag index (DISLI) (9,17,18). We then categorized states
167 into DISLI quartiles (Q1-Q4) and classified individuals from each quartile to each
168 according to their state of residence.

169 • **Depressive symptoms** – Evaluated using the seven-item version of the Center for
170 Epidemiologic Studies Depression Scale (CESD-7). CESD-7 measures the
171 frequency with which depressive symptoms are experienced during the week prior
172 to the interview collected at ENSANUT 2022. Cut-offs to identify the presence of
173 moderate or severe depressive symptoms were ≥ 9 points for adults aged 20-59,
174 and ≥ 5 points for adults ≥ 60 years (19,20).

175 • **Incapacitating symptoms** – Defined if the person answered “yes” to the question
176 “Do these [persistent COVID-19] symptoms prevent you or did they prevent you
177 from taking care of yourself? For example, that difficulties to bathe or dress
178 oneself”.

179 Statistical analyses

180 *Weighted prevalence of PASC and persistent COVID-19 symptoms*

181 Prevalence of PASC and persistent symptoms were estimated using sample weights from
182 ENSANUT for participants ≥ 20 years, as well as those with SARS-CoV-2 seropositivity
183 and for the population with previously diagnosed COVID-19; all estimations were
184 conducted using the *survey* R package (21). We further performed weighted subgroup
185 estimation for prevalence trends stratified by age category, sex, geographical region,
186 previous reinfection, vaccination status, infection during periods of Omicron variant
187 predominance, indigenous identity, rural or urban area, and DISLI category (high or
188 low/middle).

189 *Predictors of PASC prevalence*

190 To identify correlates of PASC positivity we fitted fixed effects logistic regression models
191 considering survey weights amongst individuals with previously diagnosed COVID-19 and
192 complete data including comorbidities. A sensitivity analysis was conducted exploring
193 predictors for any sequelae present compared to the PASC definition. All statistical
194 analyses were conducted using R version 4.1.2 and p-values thresholds are estimated for
195 a two-sided significance level of $\alpha = 0.05$.

196 **RESULTS**

197 *Study population*

198 We included adults aged ≥ 20 years old who completed the health questionnaire, totaling
199 24,434 participants (expanded to 85,521,661 adults); amongst them, 4,898 participants
200 were selected for capilar blood sampling to estimate SARS-CoV-2 seropositivity
201 (expanded to 85,098,924 adults). A flowchart diagram detailing the participant selection
202 process is available in **Supplementary Figure 1**. Overall, we identified a prevalence of
203 previously diagnosed COVID-19 amongst adults ≥ 20 years of 22.0% (95%CI 21.31-22.69),
204 which contrasted markedly with the seroprevalence of IgG against the N-protein of SARS-

205 CoV-2, estimated at 93.66% (95%CI 92.78-94.54). Overall, approximately 86.21% (95%CI
206 85.64-86.78) of adults had received at least one dose of COVID-19 vaccines, with 11.62%
207 (95%CI 11.1-12.14) receiving only one dose, 29.6% (95%CI 28.83-30.37) with two doses,
208 39.51% (95%CI 38.73-40.29) with three doses and 5.48% (95%CI 5.11-5.85) with four
209 doses.

210 Prevalence of persistent COVID-19 symptoms

211 Overall, we identified that 12.44% (95%CI 11.89-12.99) of adults ≥ 20 years had at least
212 one persistent COVID-19 symptom for ≥ 1 month, which equates to a total of 10,634,663
213 individuals (95%CI 10,155,424-11,113,902). Amongst them, 45.87% (95%CI 43.49-48.25)
214 lasted < 1 additional month, 16.74% (95%CI 14.93-18.55) persisted between 1-3 months,
215 4.54% (95%CI 3.56 -5.52) between 3-6 months, 4.26% (95%CI 3.28-5.24) for > 6 months
216 and 28.6% (95%CI 26.43-30.77) persisting until the date of the interview. The prevalence
217 of any persistent symptoms was similar when analyzing only N-protein seropositive adults
218 (12.7%, 95%CI 11.48-14.06) and was higher when considering only cases with previously
219 diagnosed COVID-19 by a physician (56.52%, 95%CI 54.75-58.29). The ten most frequent
220 persistent symptoms amongst subjects with SARS-CoV-2 N-protein seropositivity were
221 musculoskeletal pain, headache, cough, loss of smell or taste, fever, post-exertional
222 malaise, brain fog, anxiety, chest pain, and sleep disorders (**Supplementary Material**).

223 Persistent symptoms in selected subgroups

224 Amongst SARS-CoV-2 N-protein seropositive individuals subacute or ongoing
225 symptomatic COVID-19 was present in 7.42% (95%CI 6.42-8.42), whilst PASC was
226 present in 5.51% (95%CI 4.61-6.41) of cases (**Figure 1**). The five most common persistent
227 symptoms in subacute COVID-19 were cough, headache, fever, musculoskeletal pain, and
228 loss of smell or taste, whilst for PASC they were musculoskeletal pain, post-exertional
229 malaise, headache, cough, and dyspnea (**Figure 1A-B**). Regarding sex, the prevalence of

230 any persistent symptom amongst SARS-CoV-2 N-protein seropositive individuals was
231 higher for males (14.12%, 95%CI 12.42-15.85) compared to females (10.50%, 95%CI
232 8.56-12.44); in males the five most frequent persistent symptoms were headache,
233 musculoskeletal pain, and cough, whilst for females they were cough, musculoskeletal
234 pain, and fever (**Supplementary Material**). In cases with previously diagnosed COVID-19
235 SARS-CoV-2 primoinfection was associated with lower prevalence of persistent sequelae
236 (55.39%, 95%CI 53.49-57.29) compared to cases with at least one SARS-CoV-2
237 reinfection (64.41%, 95%CI 59.69-69.13); in cases with SARS-CoV-2 primoinfection the
238 most common persistent symptoms were musculoskeletal pain, headache, cough, post-
239 exertional malaise, and loss of smell or taste, whilst for reinfection they were cough,
240 headache, post-exertional malaise, musculoskeletal pain, and fever (**Supplementary**
241 **Material**).

242 Prevalence of PASC in Mexico

243 Using the WHO definition, we identified a prevalence of 4.67% (95%CI 4.32-5.02) in the
244 overall population, 5.51% (95%CI 4.61-6.41) amongst SARS-CoV-2 N-protein seropositive
245 population, and 21.21% (95%CI 19.74-22.68) in subjects with previously diagnosed
246 COVID-19, totaling 3,990,011 affected adults (95%CI 3,685,878-4,294,144;
247 **Supplementary Material**). We identified the highest prevalence of PASC amongst
248 subjects with previously diagnosed COVID-19 in Mexico City/Mexico State and the
249 Peninsula region, whilst the lowest prevalence was observed in the US Border region,
250 coincidentally most clustering in Northern Mexico (**Figure 2A**). When comparing
251 characteristics between individuals with and without PASC, we identified that individuals
252 with PASC clustered most persistent symptoms, even those not included in the PASC
253 score; furthermore, higher rates of reinfections, diabetes and hypertension were observed
254 individuals with PASC (**Table 1**). Overall, 15.13% (95%CI 13.50-16.76) of individuals

255 affected by persistent symptoms reported incapacity to perform everyday tasks including
256 take care of oneself; this rate was 14.06% (95%CI 11.37-16.75) amongst PASC compared
257 to 7.13% (95%CI 6.17-8.09) in individuals without PASC who had previously diagnosed
258 with COVID-19, indicating a high burden of PASC on everyday functioning. Finally, we
259 analyzed cases with PASC score ≥ 12 , observing a prevalence of 1.91% (95%CI 1.69-
260 2.13) in the general population, 2.02% (95%CI 1.48-2.56) in SARS-CoV-2 N-protein
261 seropositive individuals and 8.68% (95%CI 7.72-9.65) in individuals with previously
262 diagnosed SARS-CoV-2 infection. Notably, incapacitating PASC symptoms were observed
263 in 45.38% (95%CI 39.65-51.11) of subjects with PASC score ≥ 12 , indicating a more
264 severe phenotype. Furthermore, comparing PASC positive (score ≥ 12) vs. PASC
265 indeterminate subjects (score < 12) reinfection rates and symptom clustering occurred
266 most frequently in PASC positive subjects (**Supplementary Material**); interestingly, lower
267 vaccination and infections detected during periods of Omicron variant predominance were
268 observed in PASC positive vs. PASC indeterminate individuals. This indicated that the
269 PASC score likely detected individuals with a more severe PASC phenotype.

270 PASC prevalence in selected subgroups

271 PASC prevalence estimates generally increased with age and were higher in females
272 compared to males (**Figure 2B**); furthermore, PASC prevalence was higher with
273 increasing DISLI values, particularly in urban settings (**Figure 2D**). For infection-related
274 variables the prevalence of PASC was lower if the last infection occurred during periods of
275 high Omicron variant circulation compared to other SARS-CoV-2 variants and was
276 generally lower in vaccinated subjects irrespective of variant predominance (**Figure 2C**);
277 similarly, prevalence of PASC was higher in subjects with at least one reinfection
278 compared to primoinfection, but this was more evident in cases where COVID-19 was
279 acquired during periods of Omicron variant predominance (**Figure 2E**). Finally, when

280 evaluating PASC prevalence per year at which the last SARS-CoV-2 infection was
281 diagnosed, prevalence changed from 25.82% (95%CI 22.40-29.24) for cases infected in
282 2020, to 21.96% for cases infected in 2021 (95%CI 19.65-24.27), and to 17.60% (95%CI
283 15.36-19.84) for cases infected in 2022 (**Supplementary Material**).

284 Modifiers of PASC prevalence

285 We fitted fixed effects logistic regression model considering survey weights to identify
286 correlates of PASC positivity amongst individuals with previously diagnosed COVID-19
287 and complete data including comorbidities (n=2,504). We identified that infection during
288 periods of Omicron variant predominance (OR 0.73, 95%CI 0.59-0.90) and male sex (OR
289 0.75, 95%CI 0.61-0.91) were associated with lower odds of PASC positivity. In addition,
290 having had at least one SARS-CoV-2 reinfection (OR 1.83, 95%CI 1.38-2.41), having
291 moderate to severe depressive symptoms as identified by CES-D (OR 1.89, 95%CI 1.51-
292 2.36), older age, and living in states with higher social lag (OR 1.48, 95%CI 1.10-1.99 for
293 Q4 vs Q1) were associated with higher odds of PASC positivity (**Figure 3A**). When
294 evaluating the same predictors but using the definition of PASC score ≥ 12 points, which
295 likely indicates a more severe PASC phenotype, infection during periods of Omicron
296 variant predominance, COVID-19 vaccination, having had at least one SARS-CoV-2
297 reinfection, living in states with higher social lag, and moderate to severe depressive
298 symptoms by CES-D were associated with the outcome (**Figure 3B**); further
299 disaggregating by the number of vaccine doses compared to unvaccinated individuals
300 showed a similar protective effect with increasing doses and irrespective of vaccine
301 platform for primary vaccination schedule (**Supplementary Material**).

302 Predictors of incapacitating PASC symptoms

303 Amongst individuals with persistent symptoms a PASC score ≥ 12 points resulted in higher
304 rates of incapacitating symptoms at all time points and independent of the WHO PASC

305 definition (**Figure 4A**). Predictors of incapacitating symptoms included previously
306 diagnosed diabetes (OR 1.98, 95%CI 1.00-3.90), moderate to severe depressive
307 symptoms (OR 1.85, 95%CI 1.07-3.20), age 50-59 years compared to younger individuals
308 (OR 3.39, 95%CI 1.32-10.37), having had at least one SARS-CoV-2 reinfection (OR 2.58,
309 95%CI 1.24-5.31) and a lower risk observed in individuals infected during periods of
310 Omicron variant predominance (OR 0.42, 95%CI 0.22-0.79). Notably, the most significant
311 predictor of incapacitating PASC symptoms was a PASC score ≥ 12 points (OR 4.92,
312 95%CI 2.37, 10.12).

313 **DISCUSSION**

314 Here, we conducted the first comprehensive report on the prevalence of PASC in Mexican
315 adults during the year 2022, surveying a total of 24,434 participants. Persistent COVID-19
316 symptoms were reported by 12.44% of adults ≥ 20 years in Mexico and amongst 12.7% of
317 adults with SARS-CoV-2 N-protein seropositivity during 2022. The most commonly
318 reported persistent COVID-19 symptoms amongst SARS-CoV-2 N-protein seropositive
319 adults include musculoskeletal pain, followed by headache, cough, loss of smell or taste,
320 fever, post-exertional malaise, brain fog, anxiety, chest pain, and sleep disorders. Using a
321 recent the WHO PASC definition (3) we identified a prevalence of 5.51% amongst SARS-
322 CoV-2 N-protein seropositive Mexican adults and 21.21% amongst cases with previously
323 diagnosed COVID-19; the prevalence of PASC increased with age and was higher for
324 females, for SARS-CoV-2 infections detected in 2020 and in settings with higher social lag
325 in urban settings. PASC was associated with increasing number of SARS-CoV-2
326 reinfections, moderate to severe depressive symptoms and living in states burdened by
327 sociodemographic inequalities. We also confirm previous reports that COVID-19
328 vaccination and infection during periods of Omicron variant predominance decreases odds
329 of severe forms of PASC (2,22,23). Notably, over 28.6% patients with PASC reported

330 persistence of symptoms over 6 months and over 14.06% reported incapacitating
331 symptoms, which indicate a subset of participants in whom interventions may lead to a
332 significant improvement in quality of life (24). Finally, we identified that incapacitating
333 PASC symptoms were associated with diabetes, moderate to severe depressive
334 symptoms, SARS-CoV-2 reinfections and a PASC score ≥ 12 points. Our study represents
335 the first comprehensive and nationally representative report of PASC in Mexican adults
336 and the first report on the impact of vaccination, SARS-CoV-2 variants, reinfections, and
337 sociodemographic inequalities in the prevalence of PASC and symptom persistence and
338 severity in Mexico.

339 A previous systematic review identified that approximately 72.5% of individuals previously
340 infected by SARS-CoV-2 experienced post-acute sequelae (25). This contrasts with a
341 lower reported prevalence of 56.52% amongst individuals with previously diagnosed
342 COVID-19 reported in our study and with the even lower estimate amongst SARS-CoV-2
343 seropositive adults. A previous study using data from ENSANUT 2020 reported that
344 amongst SARS-CoV-2 seropositive individuals who recovered from COVID-19 in Mexico,
345 approximately 15.7% reported unspecified sequelae, with these being higher in females,
346 older adults and hospitalized individuals (11). In our study, we identified that the main
347 predictors of higher PASC prevalence include SARS-CoV-2 reinfections, moderate to
348 severe depressive symptoms and sociodemographic inequalities as proxied by the DISLI.
349 Similar to our findings, previous reports from the UK showed that individuals with PASC
350 clustered in areas of higher socioeconomic deprivation (26), supporting the notion that
351 structural determinants of health may influence the incidence and natural history of chronic
352 debilitating diseases including chronic fatigue syndrome, myalgic encephalitis and PASC
353 (27,28), as it does during the acute phase of SARS-CoV-2 infection (9). Our findings are
354 also in agreement with previous data supporting that SARS-CoV-2 reinfections increased

355 the risk of SARS-CoV-2 sequelae, irrespective of predominant variant; although, lower risk
356 of PASC has been consistently associated with infections caused by the Omicron
357 compared to previous circulating variants (29,30). Finally, the higher rate of moderate to
358 severe depressive symptoms and self-reported anxiety in PASC indicates a relevant area
359 of intervention for affected individuals, particularly since long-term neuropsychiatric
360 sequelae has been consistently reported in SARS-CoV-2 convalescent individuals after
361 recovery from acute infection (4,14,31–33).

362 The precise nature behind the pathophysiology of PASC is unclear. Current evidence
363 suggests involvement of SARS-CoV-2 mediated pathophysiological changes in several
364 tissues, immune system dysregulation and immune response viral particle persistence and
365 expected sequelae of critical illness. Increased inflammatory responses and an inadequate
366 adaptation of the hypothalamic–pituitary–adrenal axis to hypocortisolemia after acute
367 SARS-CoV-2 infection may underlie the occurrence of symptoms related to brain fog, post-
368 exertional malaise, and neuropsychiatric symptoms, including anxiety and depression in
369 PASC positive patients (2,34–36), which often last the longest in patients with persistent
370 COVID-19 symptoms (10,37). Consistent with findings from our study, previous data has
371 shown that COVID-19 vaccination decreases the risk of PASC and persistent COVID-19
372 sequelae (23,38); the mechanism underlying this association is unclear. A previous
373 immune phenotyping study of PASC identified increased levels of anti-N and anti-S IgG in
374 individuals with PASC compared to vaccinated controls, indicating persistent chronic
375 immune responses to SARS-CoV-2 viral antigens in PASC, which may be modulated in
376 response to COVID-19 vaccination (34). In agreement with our findings for severe PASC
377 phenotypes, longitudinal evaluations have shown that increasing number of COVID-19
378 vaccine doses are associated with symptom improvement over time (1,39); however,
379 some studies have suggested that a subset of participants may not experience

380 improvement or may even experience worsening of symptoms after vaccination (40).
381 Further evidence is required to investigate the impact of COVID-19 vaccinations after
382 reinfections, which have been shown to be reduced themselves by booster vaccination
383 (15).
384 Our study had several strengths including a nationally representative sample of individuals
385 with antibody measurement to detect SARS-CoV-2 N-protein seropositivity, previously
386 diagnosed COVID-19 and reports of long-term sequelae. Furthermore, we were able to
387 assess risk factors related to state-level sociodemographic inequalities, vaccination,
388 reinfection, and predominant variant at the time of infection to explore correlates of PASC
389 in a representative sample of Mexican adults. However, some limitations must be
390 acknowledged to adequately interpret our results. Since the definition of PASC is still
391 evolving, we applied two main definitions based on the World Health organization
392 consensus and a recent definition based on a symptom score (3,4). Despite the
393 robustness of incorporating several definitions of PASC, we were unable to include all
394 symptoms evaluated in the PASC score and symptoms and post-COVID-19 conditions
395 reported in other studies including palpitations, chronic thirst, decreased sexual desire or
396 capacity, abnormal movements, new-onset diabetes, and cardiovascular events including
397 coagulopathy and thrombosis, some of which have previously been reported for cases
398 recovered from severe COVID-19 in Mexico (10); this may lead to an underestimation in
399 the prevalence of severe PASC using this measure and its impact on patients' health.
400 Next, we used SARS-CoV-2 N-protein seropositivity as a proxy of previous SARS-CoV-2
401 infection given the high rates of undetected asymptomatic SARS-CoV-2 infections in
402 Mexico, which may otherwise lead to an underestimation of PASC prevalence (41,42).
403 However, a subset of participants who received the CoronaVac inactivated virus vaccine
404 may display seropositivity despite not having been previously infected, this represents

405 9.44% (95%CI 10.63-11.97) of the total SARS-CoV-2 N-protein seropositive population
406 (43,44). To address this, we also conducted an analysis excluding individuals who
407 received with CoronaVac and individuals who had COVID-19 previously diagnosed by a
408 physician, obtaining largely similar results with slightly lower prevalence estimates
409 (**Supplementary Material**). Finally, although the observed associations are consistent
410 with data from previous studies, its observational nature precludes from making temporal
411 associations with the incidence of PASC, which require further studies to further support
412 these findings in Mexican population.

413 **Conclusion**

414 We report a prevalence of PASC of 4.67% in the general population, affecting 21.21% of
415 individuals with previously diagnosed COVID-19. In general, over 12.44% of Mexican
416 adults report at least one persistent COVID-19 symptom, with the most common being
417 musculoskeletal pain, headache, cough, loss of smell or taste, and fever. PASC
418 prevalence increased with age and was more common in females; severe PASC was less
419 frequent for cases infected during periods of Omicron variant predominance and in
420 vaccinated individuals in a dose-dependent manner but was more common in individuals
421 with at least one detected SARS-CoV-2 reinfection. Moreover, prevalence of PASC
422 increased in states with higher marginalization, particularly in urban settings. Of note, over
423 14.05% of participants affected by PASC reported trouble in everyday physical functioning,
424 highlighting the disabling nature of persistent symptoms and indicating a need to
425 implement multidisciplinary teams for patient treatment in Mexico. Further studies are
426 required to characterize the epidemiology of PASC in Mexico using standardized
427 definitions and with longer follow-up in order to identify strategies to mitigate its long-term
428 impact in physical functioning and quality of life as SARS-CoV-2 transitions into
429 endemicity.

430

431 **ACKNOWLEDGMENTS**

432 CAFM is enrolled at the PECEM Program of the Faculty of Medicine at UNAM. CAFM and
433 DRG are supported by CONACyT.

434 **AUTHOR CONTRIBUTIONS**

435 Research idea and study design: OYBC, CAFM; data acquisition and processing: CAFM,
436 NEAV, OYBC; statistical analysis: OYBC; analysis/interpretation: CDPC, CAFM, OYBC,
437 NEAV, AVV, LFC, DRG; manuscript drafting: OYBC, CAFM, DRG, LFC, AVV, MRBA,
438 PSC, ANL, NEAV; supervision or mentorship: OYBC, NEAV. Each author contributed
439 important intellectual content during manuscript drafting or revision and accepts
440 accountability for the overall work by ensuring that questions pertaining to the accuracy or
441 integrity of any portion of the work are appropriately investigated and resolved.

442 **DATA AVAILABILITY:** All code, datasets and materials are available for reproducibility of
443 results at http://github.com/oyaxbell/pasc_ensanut/. ENSANUT 2022 data is openly
444 available at: <https://ensanut.insp.mx/encuestas/ensanutcontinua2022/descargas.php>

445 **CONFLICT OF INTEREST/FINANCIAL DISCLOSURE:** Nothing to disclose.

446 **FUNDING:** This research was supported by Instituto Nacional de Geriátría in Mexico.

447

448

449 **REFERENCES**

- 450 1. Davis HE, McCorkell L, Vogel JM, Topol EJ. Long COVID: major findings,
451 mechanisms and recommendations. *Nat Rev Microbiol.* 2023 Mar;21(3):133–46.
- 452 2. Sudre CH, Murray B, Varsavsky T, Graham MS, Penfold RS, Bowyer RC, et al.
453 Attributes and predictors of long COVID. *Nat Med.* 2021 Apr;27(4):626–31.
- 454 3. Soriano JB, Murthy S, Marshall JC, Relan P, Diaz JV, WHO Clinical Case

- 455 Definition Working Group on Post-COVID-19 Condition. A clinical case definition of post-
456 COVID-19 condition by a Delphi consensus. *Lancet Infect Dis*. 2022 Apr;22(4):e102–7.
- 457 4. Thaweethai T, Jolley SE, Karlson EW, Levitan EB, Levy B, McComsey GA, et al.
458 Development of a Definition of Postacute Sequelae of SARS-CoV-2 Infection. *JAMA*. 2023
459 Jun 13;329(22):1934–46.
- 460 5. Sakhamuri SM, Jankie S, Pereira LMP. Calling on Latin America and the
461 Caribbean countries to recognise the disability from long COVID. *The Lancet Regional*
462 *Health – Americas* [Internet]. 2022 Nov 1 [cited 2023 Jul 4];15. Available from:
463 [https://www.thelancet.com/journals/lanam/article/PIIS2667-193X\(22\)00179-X/fulltext](https://www.thelancet.com/journals/lanam/article/PIIS2667-193X(22)00179-X/fulltext)
- 464 6. Mathieu E, Ritchie H, Rodés-Guirao L, Appel C, Giattino C, Hasell J, et al.
465 Coronavirus Pandemic (COVID-19). *Our World in Data* [Internet]. 2020 Mar 5 [cited 2023
466 Jul 4]; Available from: <https://ourworldindata.org/coronavirus/country/mexico>
- 467 7. Bello-Chavolla OY, Bahena-López JP, Antonio-Villa NE, Vargas-Vázquez A,
468 González-Díaz A, Márquez-Salinas A, et al. Predicting Mortality Due to SARS-CoV-2: A
469 Mechanistic Score Relating Obesity and Diabetes to COVID-19 Outcomes in Mexico. *The*
470 *Journal of Clinical Endocrinology & Metabolism*. 2020 Aug 1;105(8):2752–61.
- 471 8. Bello-Chavolla OY, Antonio-Villa NE, Valdés-Ferrer SI, Fermín-Martínez CA,
472 Fernández-Chirino L, Vargas-Vázquez A, et al. Effectiveness of a nationwide COVID-19
473 vaccination program in Mexico against symptomatic COVID-19, hospitalizations, and
474 death: a retrospective analysis of national surveillance data. *Int J Infect Dis*. 2023
475 Apr;129:188–96.
- 476 9. Antonio-Villa NE, Fernandez-Chirino L, Pisanty-Alatorre J, Mancilla-Galindo J,
477 Kammar-García A, Vargas-Vázquez A, et al. Comprehensive evaluation of the impact of
478 sociodemographic inequalities on adverse outcomes and excess mortality during the
479 COVID-19 pandemic in Mexico City. *Clin Infect Dis*. 2021 Jun 22;ciab577.

- 480 10. Núñez I, Gillard J, Fragoso-Saavedra S, Feyaerts D, Islas-Weinstein L, Gallegos-
481 Guzmán AA, et al. Longitudinal Clinical Phenotyping of Post COVID Condition in Mexican
482 Patients Recovering from Severe COVID-19: A Prospective Cohort Study [Internet].
483 Rochester, NY; 2022 [cited 2023 Jul 4]. Available from:
484 <https://papers.ssrn.com/abstract=4238650>
- 485 11. Vidaña-Pérez D, López-Olmedo N, González-Morales R, Shamah-Levy T,
486 Barrientos-Gutiérrez T. Prevalence of Covid-19 sequelae in the National Health and
487 Nutrition Survey 2020. *Salud Pública de México*. 2021 Oct 25;63(6, Nov-Dic):799–802.
- 488 12. Romero-Martínez M, Barrientos-Gutiérrez T, Cuevas-Nasu L, Bautista-Arrendondo
489 S, Colchero MA, Gaona-Pineda EB, et al. Metodología de la Encuesta Nacional de Salud
490 y Nutrición 2022 y Planeación y diseño de la Ensanut Continua 2020-2024. *Salud Pública*
491 *de México*. 2022 Aug 26;64(5, sept-oct):522–9.
- 492 13. Sánchez-Pájaro A, Ferrer CP, Basto-Abreu A, Rivera-Dommarco J, Barquera S,
493 Denova-Gutiérrez E, et al. Seroprevalencia de SARS-CoV-2 en adultos y adultos mayores
494 en México y su asociación con enfermedades crónicas. *Ensanut 2020 Covid-19*. *Salud*
495 *Pública de México*. 2021 Nov 5;63(6, Nov-Dic):705–12.
- 496 14. Nalbandian A, Sehgal K, Gupta A, Madhavan MV, McGroder C, Stevens JS, et al.
497 Post-acute COVID-19 syndrome. *Nat Med*. 2021 Apr;27(4):601–15.
- 498 15. Montes-González JA, Zaragoza-Jiménez CA, Antonio-Villa NE, Fermín-Martínez
499 CA, Ramírez-García D, Vargas-Vázquez A, et al. Protection of hybrid immunity against
500 SARS-CoV-2 reinfection and severe COVID-19 during periods of Omicron variant
501 predominance in Mexico. *Front Public Health*. 2023;11:1146059.
- 502 16. Índice Rezago Social 2020 [Internet]. [cited 2023 Jul 1]. Available from:
503 https://www.coneval.org.mx/Medicion/IRS/Paginas/Indice_Rezago_Social_2020.aspx
- 504 17. Antonio-Villa NE, Bello-Chavolla OY, Fermín-Martínez CA, Aburto JM, Fernández-

- 505 Chirino L, Ramírez-García D, et al. Socio-demographic inequalities and excess non-
506 COVID-19 mortality during the COVID-19 pandemic: a data-driven analysis of 1 069 174
507 death certificates in Mexico. *Int J Epidemiol.* 2022 Dec 13;51(6):1711–21.
- 508 18. Bello-Chavolla OY, Antonio-Villa NE, Fermín-Martínez CA, Fernández-Chirino L,
509 Vargas-Vázquez A, Ramírez-García D, et al. Diabetes-Related Excess Mortality in Mexico:
510 A Comparative Analysis of National Death Registries Between 2017–2019 and 2020.
511 *Diabetes Care.* 2022 Oct 26;45(12):2957–66.
- 512 19. Salinas-Rodríguez A, Manrique-Espinoza B, Acosta-Castillo GI, Franco-Núñez A,
513 Rosas-Carrasco O, Gutiérrez-Robledo LM, et al. [Validation of a cutoff point for the short
514 version of the Depression Scale of the Center for Epidemiologic Studies in older Mexican
515 adults]. *Salud Publica Mex.* 2014;56(3):279–85.
- 516 20. Salinas-Rodríguez A, Manrique-Espinoza B, Acosta-Castillo I, Téllez-Rojo MM,
517 Franco-Núñez A, Gutiérrez-Robledo LM, et al. [Validation of a cutoff for the Depression
518 Scale of the Center for Epidemiologic Studies, Brief Version (CESD-7)]. *Salud Publica*
519 *Mex.* 2013;55(3):267–74.
- 520 21. survey.pdf [Internet]. [cited 2023 Apr 21]. Available from: [https://cran.r-](https://cran.r-project.org/web/packages/survey/survey.pdf)
521 [project.org/web/packages/survey/survey.pdf](https://cran.r-project.org/web/packages/survey/survey.pdf)
- 522 22. Tran VT, Perrodeau E, Saldanha J, Pane I, Ravaud P. Efficacy of COVID-19
523 Vaccination on the Symptoms of Patients With Long COVID: A Target Trial Emulation
524 Using Data From the ComPaRe e-Cohort in France [Internet]. Rochester, NY: Social
525 Science Research Network; 2021 Sep [cited 2021 Oct 7]. Report No.: ID 3932953.
526 Available from: <https://papers.ssrn.com/abstract=3932953>
- 527 23. Brannock MD, Chew RF, Preiss AJ, Hadley EC, Redfield S, McMurry JA, et al.
528 Long COVID risk and pre-COVID vaccination in an EHR-based cohort study from the
529 RECOVER program. *Nat Commun.* 2023 May 22;14(1):2914.

- 530 24. Ballouz T, Menges D, Anagnostopoulos A, Domenghino A, Aschmann HE, Frei A,
531 et al. Recovery and symptom trajectories up to two years after SARS-CoV-2 infection:
532 population based, longitudinal cohort study. *BMJ*. 2023 May 31;381:e074425.
- 533 25. Nasserie T, Hittle M, Goodman SN. Assessment of the Frequency and Variety of
534 Persistent Symptoms Among Patients With COVID-19: A Systematic Review. *JAMA Netw*
535 *Open*. 2021 May 3;4(5):e2111417.
- 536 26. Shabnam S, Razieh C, Dambha-Miller H, Yates T, Gillies C, Chudasama YV, et al.
537 Socioeconomic inequalities of Long COVID: a retrospective population-based cohort study
538 in the United Kingdom. *J R Soc Med*. 2023 May 10;1410768231168377.
- 539 27. Collin SM, Bakken IJ, Nazareth I, Crawley E, White PD. Trends in the incidence of
540 chronic fatigue syndrome and fibromyalgia in the UK, 2001-2013: a Clinical Practice
541 Research Datalink study. *J R Soc Med*. 2017 Jun;110(6):231–44.
- 542 28. BERGER Z, ALTIERY DE JESUS V, ASSOUMOU SA, GREENHALGH T. Long
543 COVID and Health Inequities: The Role of Primary Care. *Milbank Q*. 2021 Jun;99(2):519–
544 41.
- 545 29. Bowe B, Xie Y, Al-Aly Z. Acute and postacute sequelae associated with SARS-
546 CoV-2 reinfection. *Nat Med*. 2022 Nov;28(11):2398–405.
- 547 30. Doll MK, Waghmare A, Heit A, Levenson Shakoor B, Kimball LE, Ozbek N, et al.
548 Acute and Postacute COVID-19 Outcomes Among Immunologically Naive Adults During
549 Delta vs Omicron Waves. *JAMA Network Open*. 2023 Feb 28;6(2):e231181.
- 550 31. Mazza MG, De Lorenzo R, Conte C, Poletti S, Vai B, Bollettini I, et al. Anxiety and
551 depression in COVID-19 survivors: Role of inflammatory and clinical predictors. *Brain*
552 *Behav Immun*. 2020 Oct;89:594–600.
- 553 32. Postolache TT, Benros ME, Brenner LA. Targetable Biological Mechanisms
554 Implicated in Emergent Psychiatric Conditions Associated With SARS-CoV-2 Infection.

- 555 JAMA Psychiatry. 2020 Jul 31;
- 556 33. Villalpando JMG, Forcelledo HA, Castillo JLB, Sastré AJ, Rojop IEJ, Hernández
557 VO, et al. COVID-19, Long COVID Syndrome, and Mental Health Sequelae in a Mexican
558 Population. *Int J Environ Res Public Health*. 2022 Jun 7;19(12):6970.
- 559 34. Klein J, Wood J, Jaycox J, Lu P, Dhodapkar RM, Gehlhausen JR, et al.
560 Distinguishing features of Long COVID identified through immune profiling [Internet].
561 medRxiv; 2022 [cited 2023 Jul 4]. p. 2022.08.09.22278592. Available from:
562 <https://www.medrxiv.org/content/10.1101/2022.08.09.22278592v1>
- 563 35. PHOSP-COVID Collaborative Group. Clinical characteristics with inflammation
564 profiling of long COVID and association with 1-year recovery following hospitalisation in
565 the UK: a prospective observational study. *Lancet Respir Med*. 2022 Aug;10(8):761–75.
- 566 36. Yavropoulou MP, Tsokos GC, Chrousos GP, Sfrikakis PP. Protracted stress-
567 induced hypocortisolemia may account for the clinical and immune manifestations of Long
568 COVID. *Clin Immunol*. 2022 Dec;245:109133.
- 569 37. Hastie CE, Lowe DJ, McAuley A, Mills NL, Winter AJ, Black C, et al. Natural history
570 of long-COVID in a nationwide, population cohort study. *Nat Commun*. 2023 Jun
571 13;14(1):3504.
- 572 38. Byambasuren O, Stehlik P, Clark J, Alcorn K, Glasziou P. Effect of covid-19
573 vaccination on long covid: systematic review. *BMJ Medicine* [Internet]. 2023 Feb 1 [cited
574 2023 Jul 4];2(1). Available from: <https://bmjmedicine.bmj.com/content/2/1/e000385>
- 575 39. Ayoubkhani D, Bermingham C, Pouwels KB, Glickman M, Nafilyan V, Zaccardi F,
576 et al. Trajectory of long covid symptoms after covid-19 vaccination: community based
577 cohort study. *BMJ*. 2022 May 18;377:e069676.
- 578 40. Tsuchida T, Hirose M, Inoue Y, Kunishima H, Otsubo T, Matsuda T. Relationship
579 between changes in symptoms and antibody titers after a single vaccination in patients

- 580 with Long COVID. *J Med Virol*. 2022 Jul;94(7):3416–20.
- 581 41. Bello-Chavolla OY, Antonio-Villa NE, Fernández-Chirino L, Guerra EC, Fermín-
582 Martínez CA, Márquez-Salinas A, et al. Diagnostic performance and clinical implications of
583 rapid SARS-CoV-2 antigen testing in Mexico using real-world nationwide COVID-19
584 registry data. *PLOS ONE*. 2021 Aug 31;16(8):e0256447.
- 585 42. Bello-Chavolla OY, Antonio-Villa NE, Vargas-Vázquez A, Fermín-Martínez CA,
586 Márquez-Salinas A, Bahena-López JP. Profiling Cases With Nonrespiratory Symptoms
587 and Asymptomatic Severe Acute Respiratory Syndrome Coronavirus 2 Infections in
588 Mexico City. *Clin Infect Dis*. 2021 May 18;72(10):e655–8.
- 589 43. Rosa Duque JS, Wang X, Leung D, Cheng SMS, Cohen CA, Mu X, et al.
590 Immunogenicity and reactogenicity of SARS-CoV-2 vaccines BNT162b2 and CoronaVac
591 in healthy adolescents. *Nat Commun*. 2022 Jun 28;13(1):3700.
- 592 44. Fonseca MHG, Pinto ACMD, Silva MFS, de Melo ACL, Vasconcelos GS, dos
593 Santos ER, et al. Dynamics of SARS-CoV-2 Antibody Response to CoronaVac followed by
594 Booster Dose of BNT162b2 Vaccine. *Emerg Infect Dis*. 2022 Jun;28(6):1237–40.
- 595
- 596

597 **TABLES**

598 **TABLE 1.** Sociodemographic and clinical characteristics of individuals with post-acute
599 sequelae of SARS-CoV-2 symptoms (PASC) as defined by the World Health Organization
600 compared individuals without PASC and previously diagnosed with COVID-19 in the
601 ENSANUT 2022 sample.

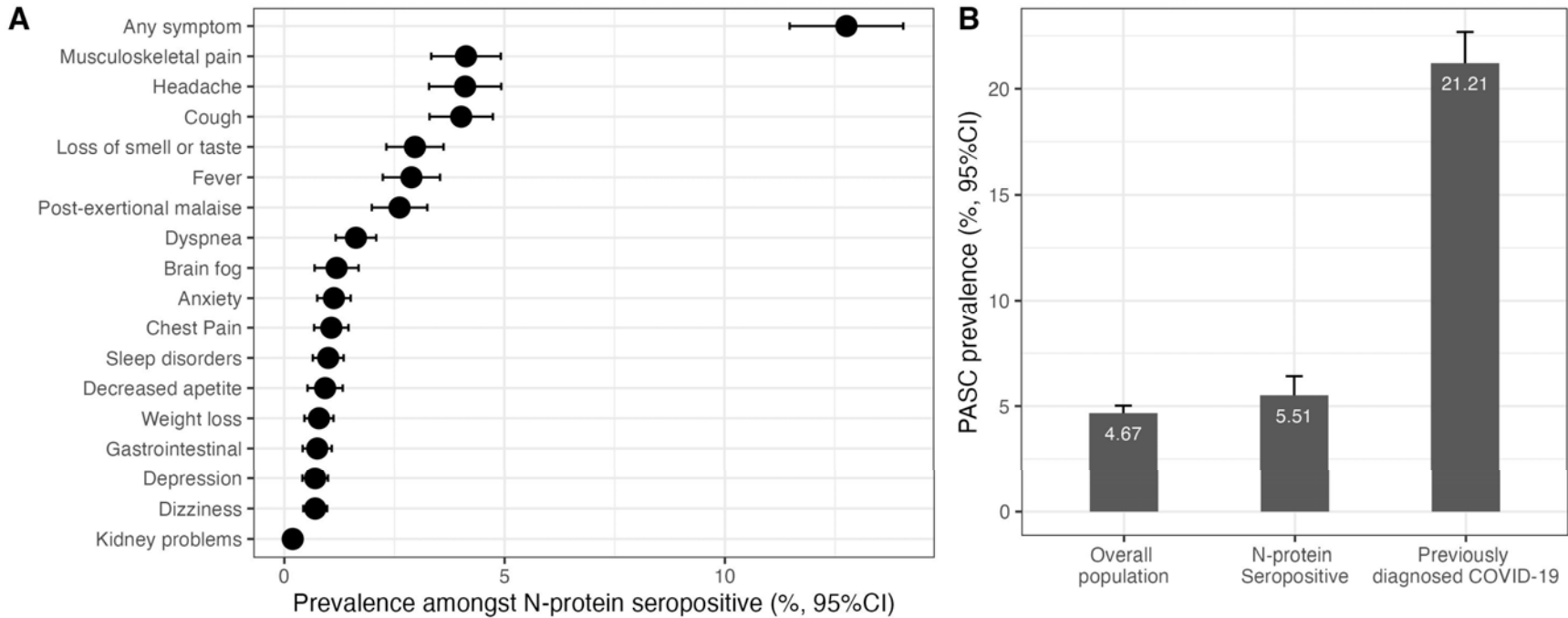
Characteristic	Overall Sample			
	Overall, N = 5,211 ¹	PACS indeterminate, N = 4,161 ¹	PACS positive, N = 1,050 ¹	p-value ²
Male sex (%)	2,322 (45%)	1,934 (46%)	388 (37%)	<0.001
Age (years)	43 (31, 55)	42 (30, 54)	47 (35, 57)	<0.001
Reinfection (%)	638 (12%)	465 (11%)	173 (16%)	<0.001
Omicron variant (%)	2,087 (40%)	1,716 (41%)	371 (35%)	<0.001
COVID-19 vaccine (%)	4,830 (93%)	3,843 (92%)	987 (94%)	0.068
Symptom duration				<0.001
<1 month	1,363 (47%)	1,363 (74%)	0 (0%)	
1-3 months	478 (17%)	478 (26%)	0 (0%)	
3-6 months	124 (4.3%)	0 (0%)	124 (12%)	
>6 months	126 (4.4%)	0 (0%)	126 (12%)	
Still persistent	800 (28%)	0 (0%)	800 (76%)	
Any symptom (%)	2,839 (54%)	1,793 (43%)	1,046 (100%)	<0.001
Loss of smell/taste (%)	692 (13%)	501 (12%)	191 (18%)	<0.001
Brain fog (%)	166 (3.2%)	74 (1.8%)	92 (8.8%)	<0.001
Gastrointestinal symptoms (%)	160 (3.1%)	119 (2.9%)	41 (3.9%)	0.079
Chest pain (%)	285 (5.5%)	170 (4.1%)	115 (11%)	<0.001
Breathlessness (%)	358 (6.9%)	198 (4.8%)	160 (15%)	<0.001
Dyspnea (%)	513 (9.8%)	283 (6.8%)	230 (22%)	<0.001
Musculoskeletal pain (%)	913 (18%)	617 (15%)	296 (28%)	<0.001
Dizziness (%)	213 (4.1%)	130 (3.1%)	83 (7.9%)	<0.001
Headache (%)	817 (16%)	575 (14%)	242 (23%)	<0.001
Weight loss (%)	203 (3.9%)	149 (3.6%)	54 (5.1%)	0.019
Loss of appetite (%)	210 (4.0%)	169 (4.1%)	41 (3.9%)	0.8
Kidney problems (%)	55 (1.1%)	30 (0.7%)	25 (2.4%)	<0.001
Sleep disturbances (%)	288 (5.5%)	169 (4.1%)	119 (11%)	<0.001
Fever (%)	670 (13%)	608 (15%)	62 (5.9%)	<0.001
Depression (%)	187 (3.6%)	117 (2.8%)	70 (6.7%)	<0.001
Anxiety (%)	256 (4.9%)	145 (3.5%)	111 (11%)	<0.001
Fatigue (%)	1,250 (24%)	783 (19%)	467 (44%)	<0.001
Chronic cough (%)	978 (19%)	737 (18%)	241 (23%)	<0.001
Post-exertional malaise (%)	541 (10%)	342 (8.2%)	199 (19%)	<0.001
PASC score	0.0 (0.0, 5.0)	0.0 (0.0, 4.0)	3.0 (1.0, 8.0)	<0.001
DISLI quartile				<0.001
Q1	1,707 (33%)	1,430 (34%)	277 (26%)	
Q2	1,630 (31%)	1,304 (31%)	326 (31%)	
Q3	965 (19%)	721 (17%)	244 (23%)	
Q4	909 (17%)	706 (17%)	203 (19%)	
CES-D score	5.0 (3.0, 8.0)	5.0 (3.0, 7.0)	6.0 (4.0, 9.0)	<0.001
Diabetes (%)	358 (14%)	258 (13%)	100 (17%)	0.015
Hypertension (%)	505 (20%)	357 (18%)	148 (26%)	<0.001
Daily smoking (%)	178 (7.1%)	140 (7.3%)	38 (6.6%)	0.6
Vaccine type				0.091
Unvaccinated	381 (7.3%)	318 (7.6%)	63 (6.0%)	
mRNA	1,607 (31%)	1,291 (31%)	316 (30%)	

Characteristic	Overall Sample			p-value ²
	Overall, N = 5,211 ¹	PACS indeterminate, N = 4,161 ¹	PACS positive, N = 1,050 ¹	
Adenovirus vector	2,629 (50%)	2,075 (50%)	554 (53%)	
Inactivated virus	438 (8.4%)	344 (8.3%)	94 (9.0%)	
Other	156 (3.0%)	133 (3.2%)	23 (2.2%)	
Incapacitating symptoms	457 (8.8%)	310 (7.5%)	147 (14%)	<0.001

¹n (%); Median (IQR)

²Pearson's Chi-squared test; Wilcoxon rank sum test; Fisher's exact test

FIGURES



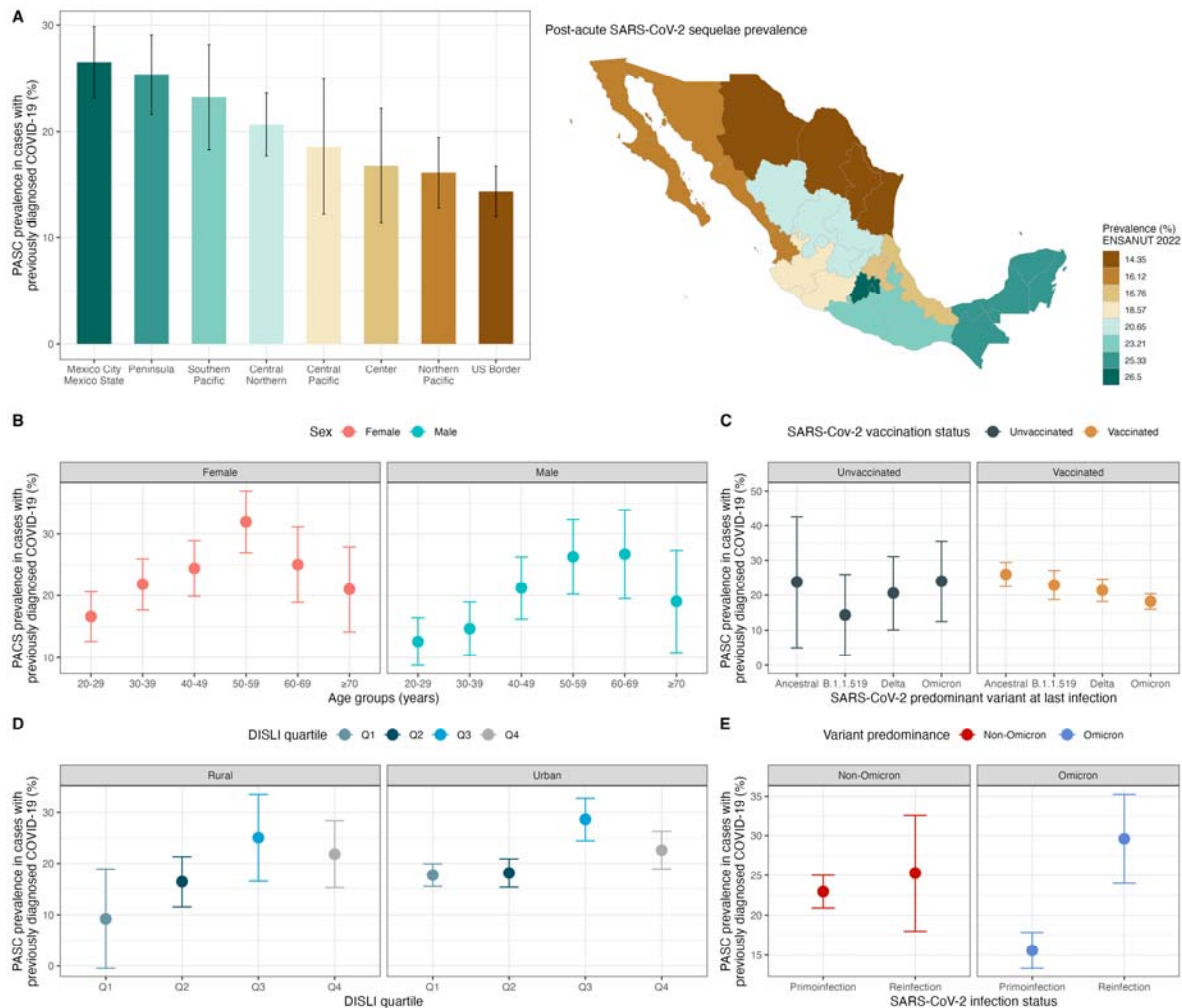
602

603

604 **Figure 1.** Prevalence of persistent COVID-19 symptoms amongst SARS-CoV-2 N-protein seropositive adults ≥ 20 years in ENSANUT
 605 2022 **(A)** and prevalence of post-acute sequelae of SARS-CoV-2 symptoms (PASC) as identified by a PASC score ≥ 12 in the overall
 606 population, in SARS-CoV-2 N-protein seropositive adults and in individuals with COVID-19 previously diagnosed by a physician in the
 607 ENSANUT 2022 sample **(B)**.

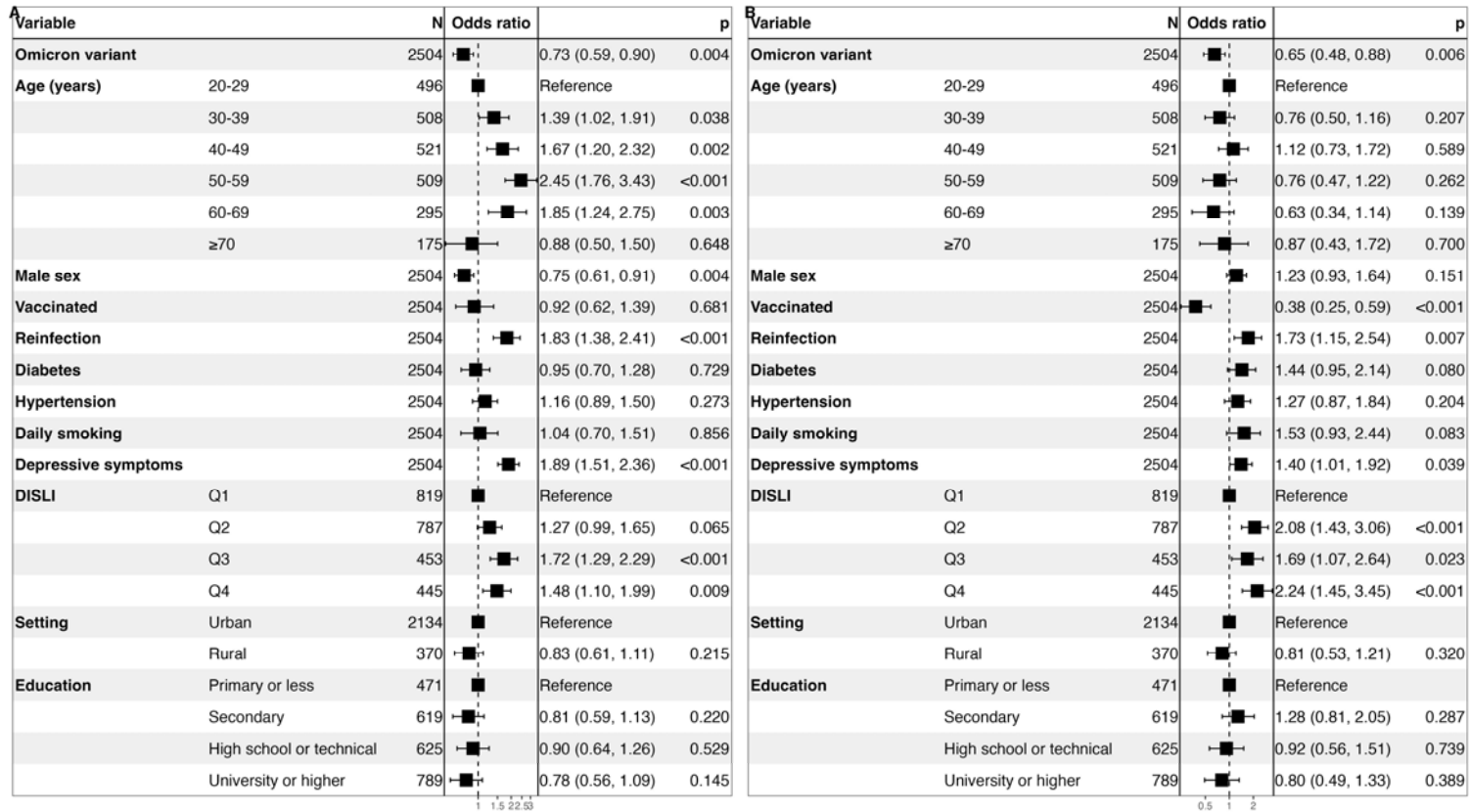
608

609

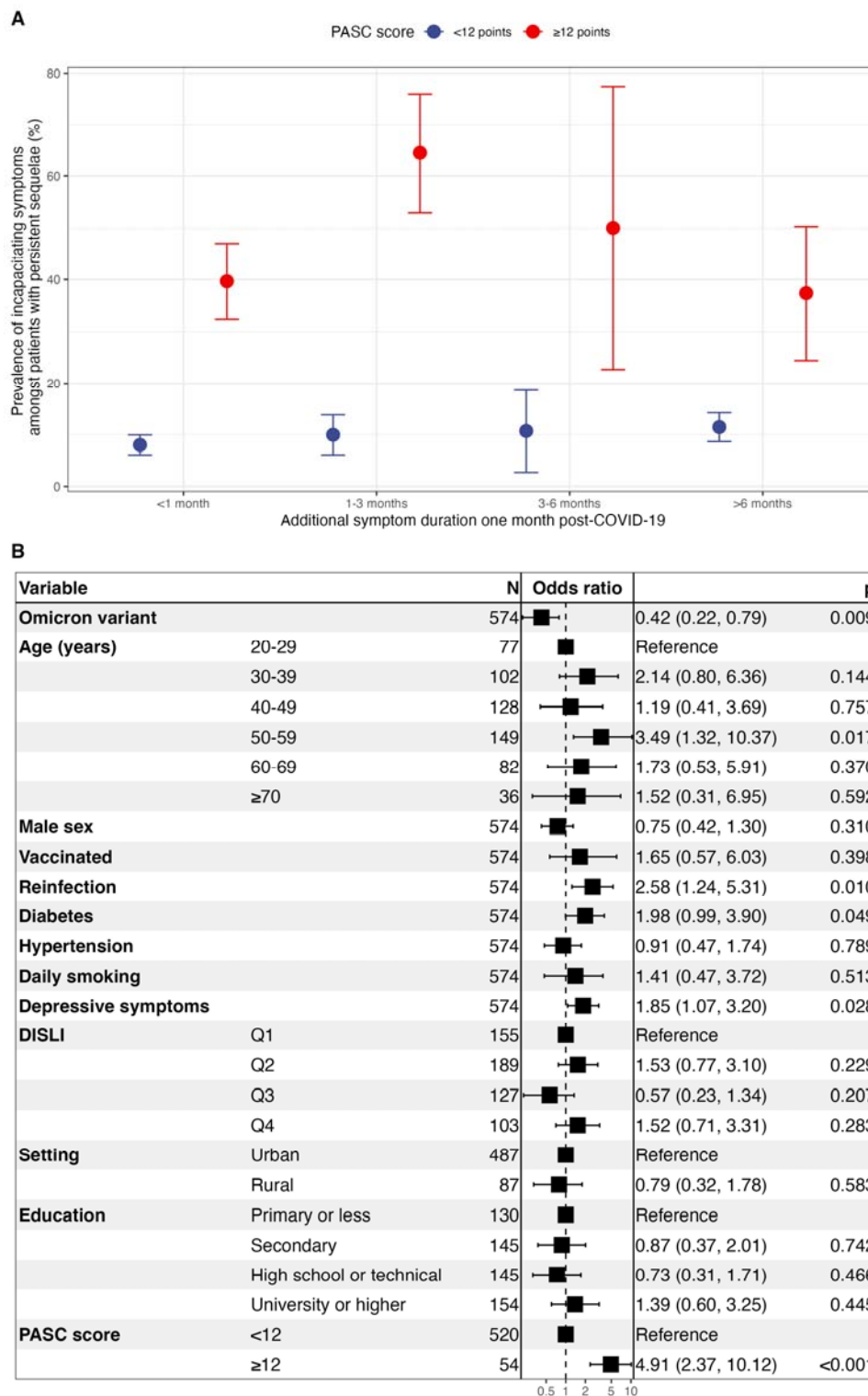


610

611 **Figure 2.** Prevalence of post-acute sequelae of SARS-CoV-2 symptoms (PASC) as
 612 identified by a PASC score ≥ 12 stratified by geographical regions in Mexico within the
 613 ENSANUT 2022 sample of adults ≥ 20 years (A). The figure also shows PASC prevalence
 614 stratified by age and sex categories (B), by predominant circulating variant at the time of
 615 last SARS-CoV-2 infection and vaccination status (C), by density-independent social lag
 616 index (DISLI) quartiles in rural vs. urban setting (D), and in subjects with primoinfection
 617 compared to at least one SARS-CoV-2 reinfection during periods of non-Omicron
 618 Omicron variant predominance (E).



621 **FIGURE 3.** Fixed effects logistic regression model adjusted by survey weights for prediction of post-acute sequelae of SARS-CoV-2
 622 symptoms (PASC) identified by a PASC score ≥ 12 (A) and the presence of any persistent COVID-19 symptom (B) amongst Mexican
 623 adults enrolled in ENSANUT 2022. Abbreviations: DISLI, Density-independent social lag-index; Depressive symptoms: Moderate to
 624 severe depressive symptoms identified by the Center for Epidemiologic Studies Depression Scale.



625

626 **FIGURE 4.** Prevalence of incapacitating symptoms amongst patients with persistent post-
 627 COVID-19 sequelae disaggregated by PASC scores using a 12-point threshold (A). The
 628 figure also shows a fixed effects logistic regression model adjusted by survey weights for

629 prediction of debilitating PASC symptoms (**A**) and the presence of any persistent COVID-
630 19 symptom (**B**) amongst Mexican adults enrolled in ENSANUT 2022. Abbreviations:
631 PASC, Post-acute sequelae of SARS-CoV-2 infection; DISLI, Density-independent social
632 lag-index; Depressive symptoms: Moderate to severe depressive symptoms identified by
633 the Center for Epidemiologic Studies Depression Scale.
634