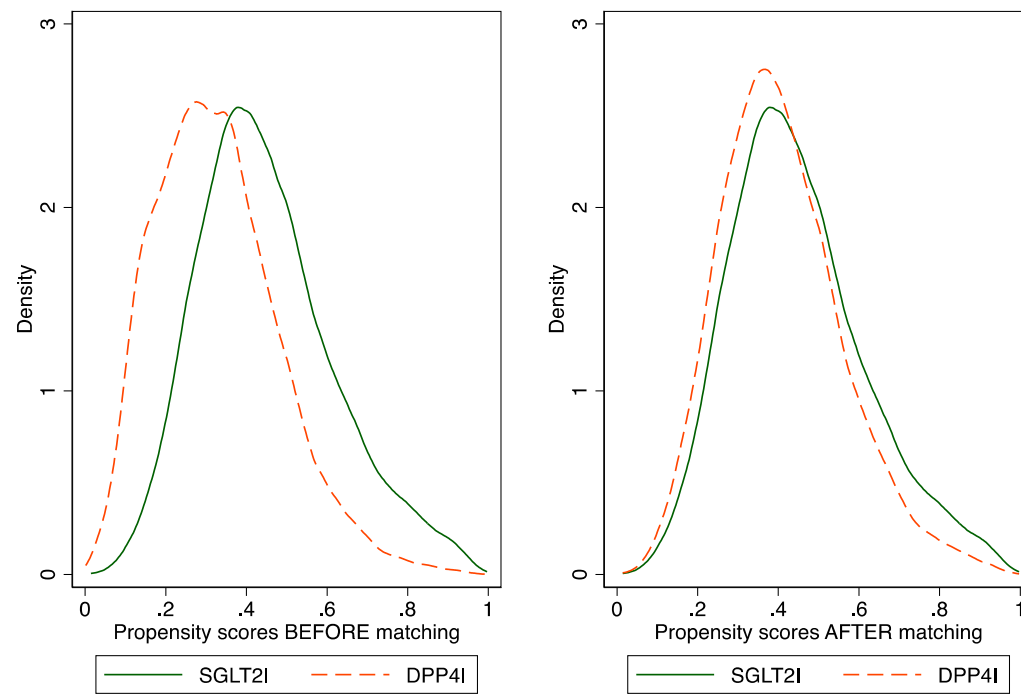
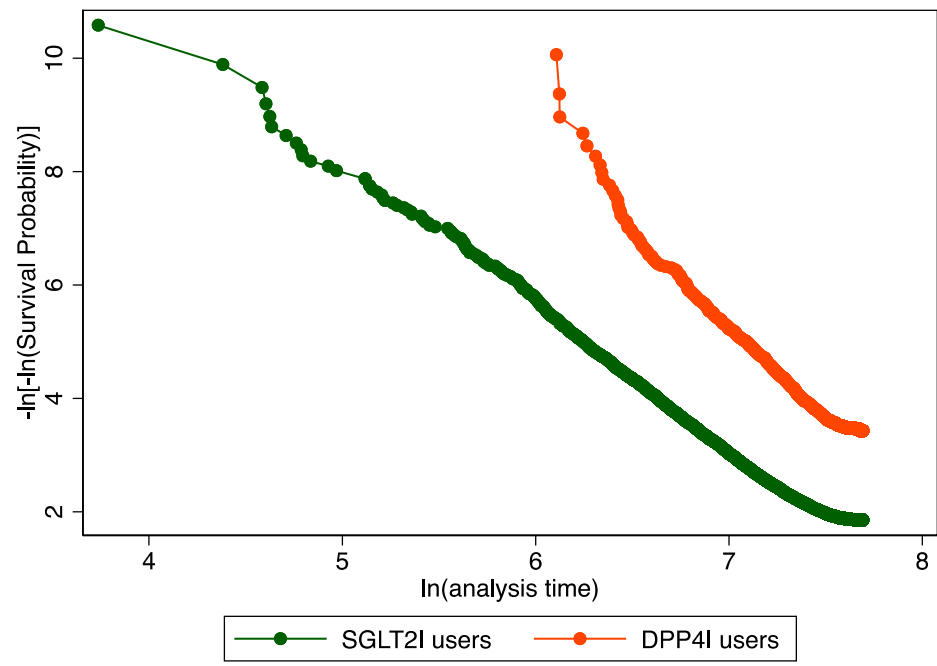


Supplementary Appendix

Table of Contents

<i>Supplementary Figure 1. Propensity score matching comparisons and proportional hazard assumption checking with parallel lines for SGLT2I v.s. DPP4I before and after 1:1 matching with nearest neighbor search strategy with calliper of 0.1</i>	<i>2</i>
<i>Supplementary Figure 2. Marginal effects of diabetes duration with 95% CIs on new onset adverse gastric events and all-cause mortality stratified by drug use.....</i>	<i>4</i>
<i>Supplementary Figure 3A. Cumulative incidence curves for new onset gastric outcomes and all-cause mortality stratified by combinations of age and drug exposure effects of SGLT2I and DPP4I before propensity score matching.</i>	<i>6</i>
<i>Supplementary Figure 3B. Cumulative incidence curves for new onset gastric outcomes and all-cause mortality stratified by combinations of age and drug exposure effects of SGLT2I and DPP4I in the matched cohort.</i>	<i>8</i>
<i>Supplementary Figure 4A. Cumulative incidence curves for new onset gastric outcomes and all-cause mortality stratified by combinations of gender and drug exposure effects of SGLT2I and DPP4I before propensity score matching.....</i>	<i>10</i>
<i>Supplementary Figure 4B. Cumulative incidence curves for new onset gastric outcomes and all-cause mortality stratified by combinations of gender and drug exposure effects of SGLT2I and DPP4I in the matched cohort.</i>	<i>12</i>
<i>Supplementary Table 1. The International Classification of Diseases, Clinical Modification (ICD-9-CM) codes for definitions of past comorbidities and outcomes.....</i>	<i>13</i>
<i>Supplementary Table 2. Calculations for variability measure</i>	<i>15</i>
<i>Supplementary Table 3. Multivariate Cox regression models with adjustments to predict new gastric cancer and gastric diseases in the SGLT2I v.s. DPP4I matched cohort.....</i>	<i>16</i>
<i>Supplementary Table 4. Sensitivity analysis: Three-arm (only SGLT2I, only DPP4I, and only GLP1a) analysis results using stabilized IPTW.....</i>	<i>17</i>
<i>Supplementary Table 5. Sensitivity analyses: Exposure effects of SGLT2I v.s. DPP4I on new onset gastric diseases in the SGLT2I v.s. DPP4I matched cohort across different hazard models and matching methods.....</i>	<i>18</i>
<i>Supplementary Table 6. Sensitivity analysis: Excluding patients with CKD stage 4/5 (eGFR <30), peritoneal dialysis or haemodialysis in the SGLT2I v.s. DPP4I matched cohort.....</i>	<i>18</i>
<i>Supplementary Table 7. Sensitivity analysis: Consideration of 1-year lag time effects in the SGLT2I v.s. DPP4I matched cohort. ...</i>	<i>18</i>
<i>Supplementary Table 8. Sensitivity analysis: As-treated approach of SGLT2I v.s. DPP4I on new onset gastric diseases in the SGLT2I v.s. DPP4I matched cohort.....</i>	<i>18</i>



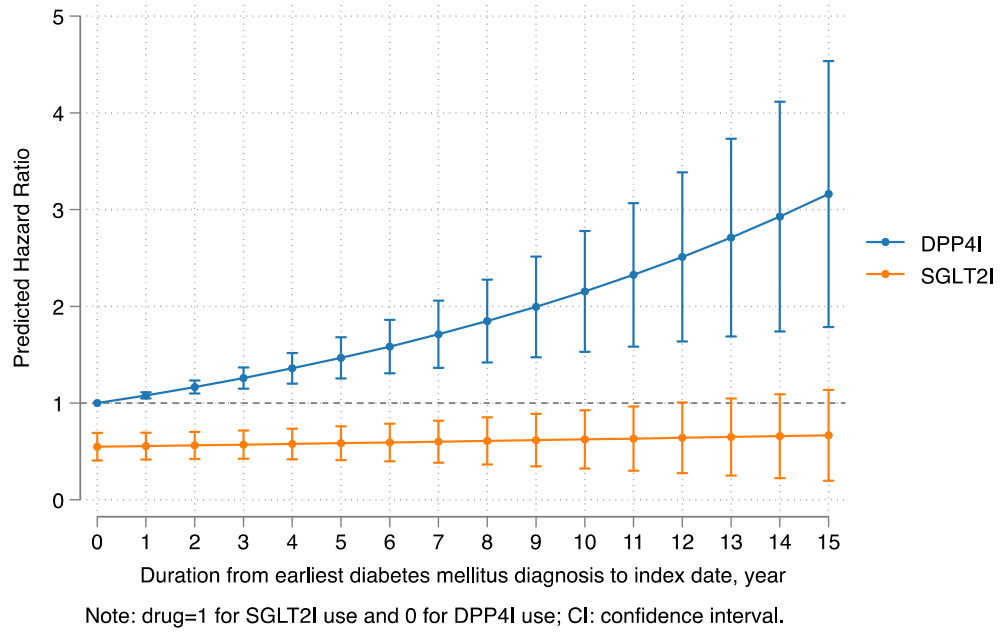
Nearest neighbor search strategy with caliper=0.1.

Supplementary Figure 1. Propensity score matching comparisons and proportional hazard assumption checking with parallel lines for SGLT2I v.s. DPP4I before and after 1:1 matching with nearest neighbor search strategy with calliper of 0.1

SGLT2I: Sodium-glucose cotransporter-2 inhibitors; DPP4I: Dipeptidyl peptidase-4 inhibitors.

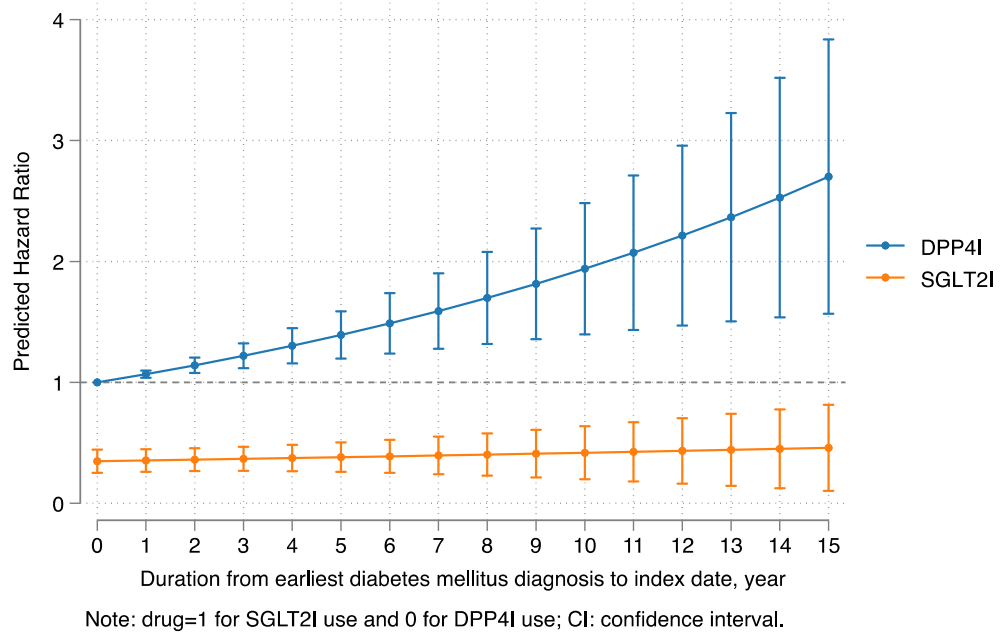
Peptic ulcer

Marginal effects of diabetes duration with 95% CIs



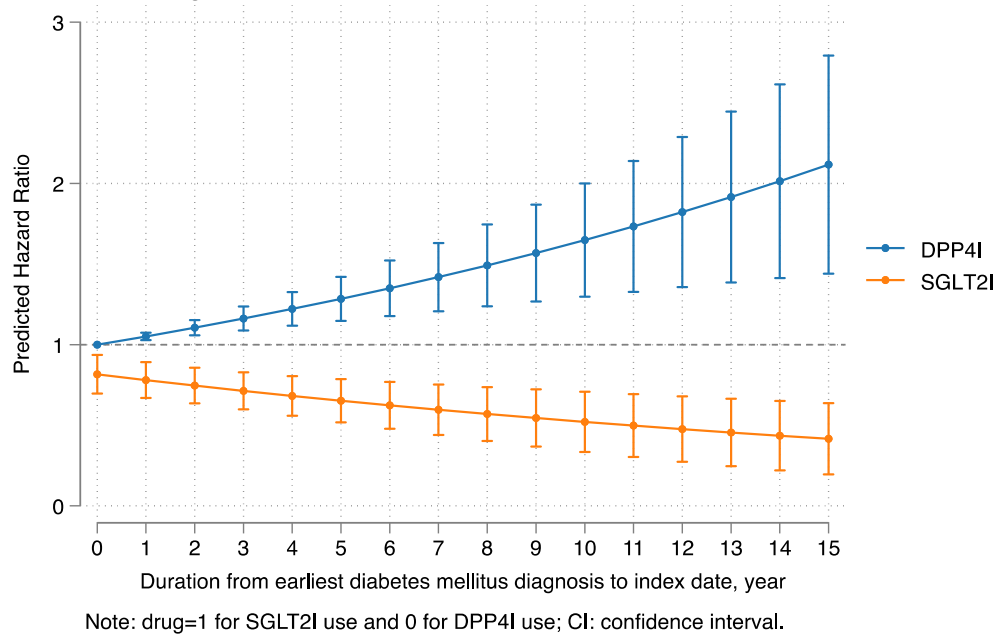
Non-acute gastritis

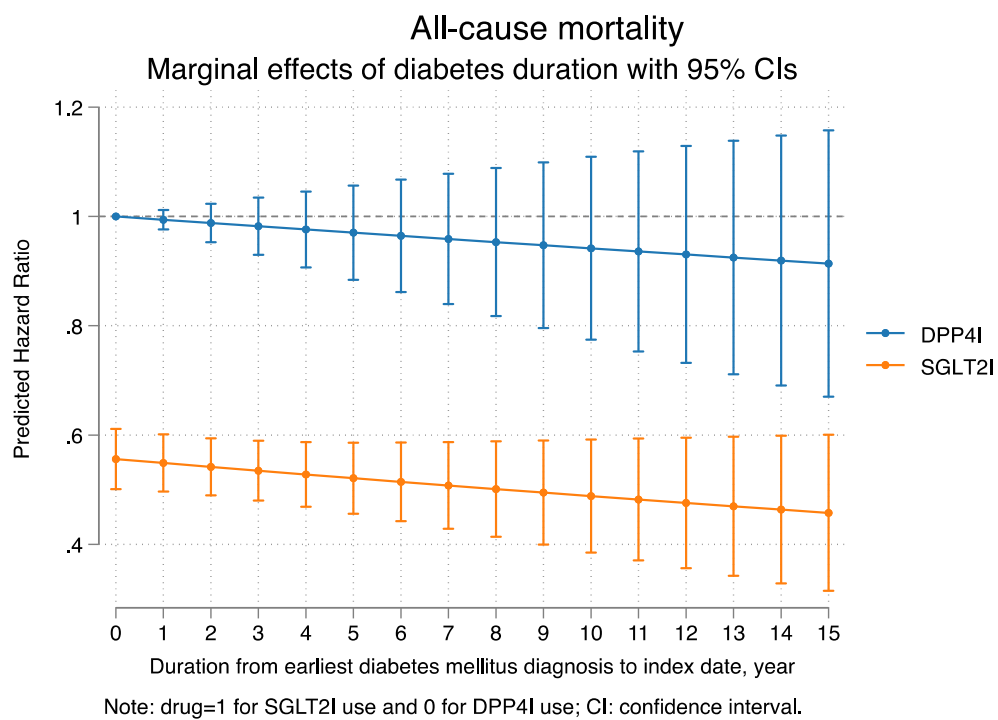
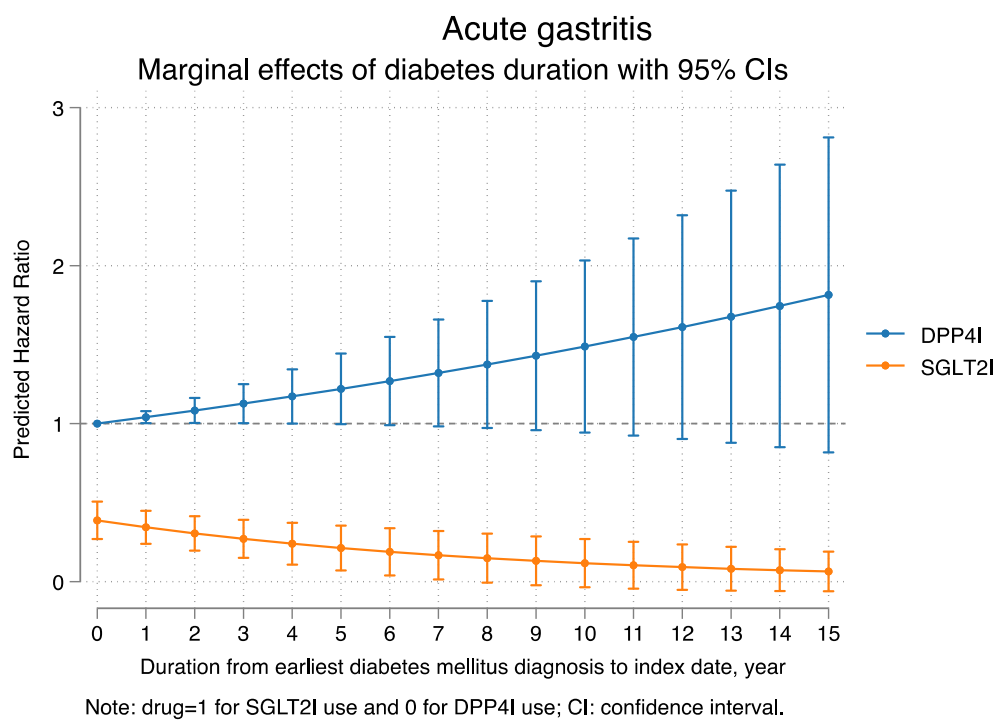
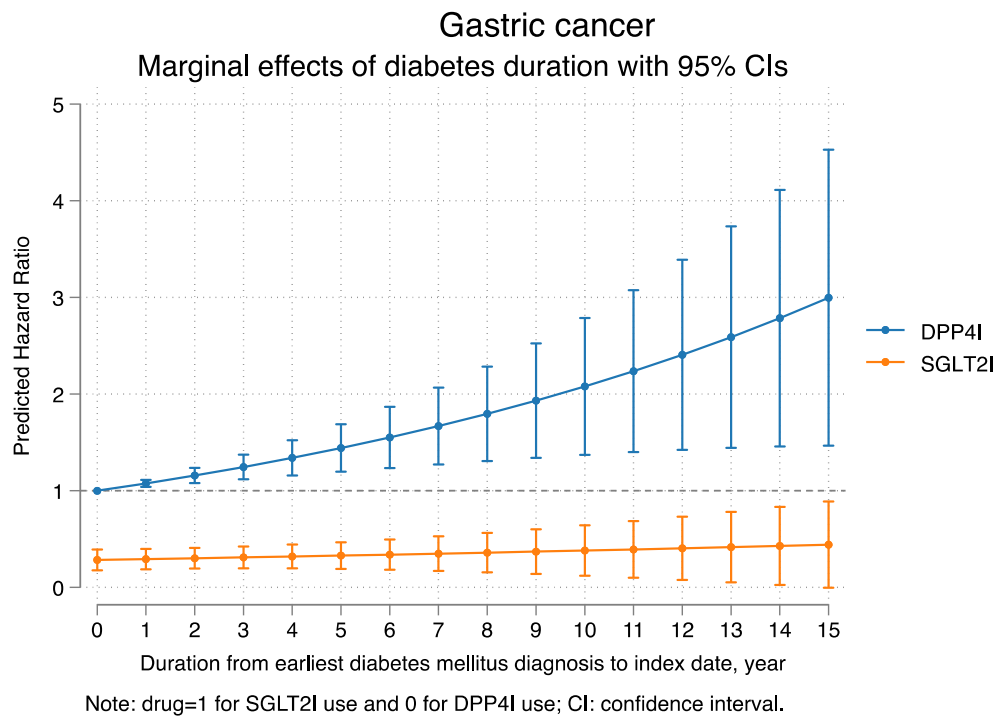
Marginal effects of diabetes duration with 95% CIs



Gastroesophageal reflux disease

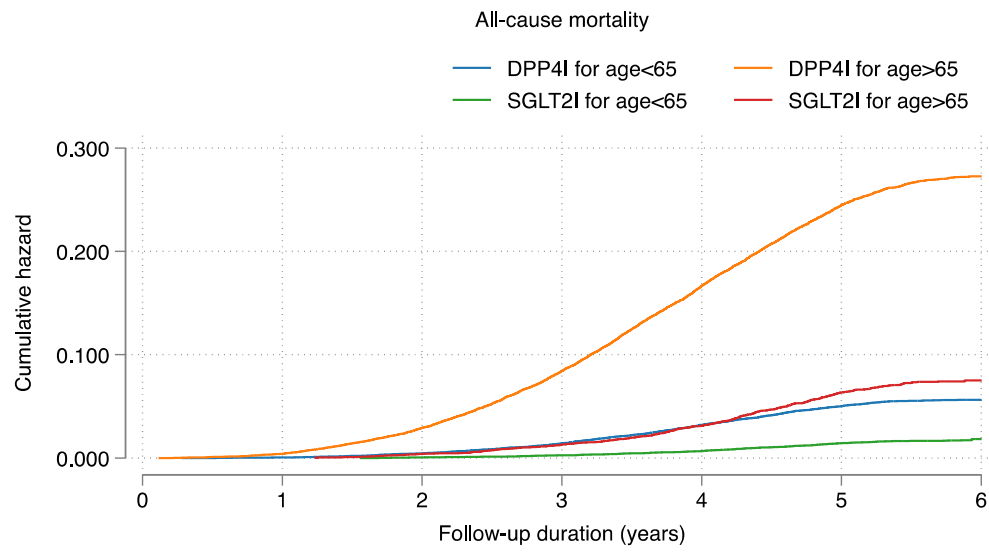
Marginal effects of diabetes duration with 95% CIs





Supplementary Figure 2. Marginal effects of diabetes duration with 95% CIs on new onset adverse gastric events and all-cause mortality stratified by drug use.

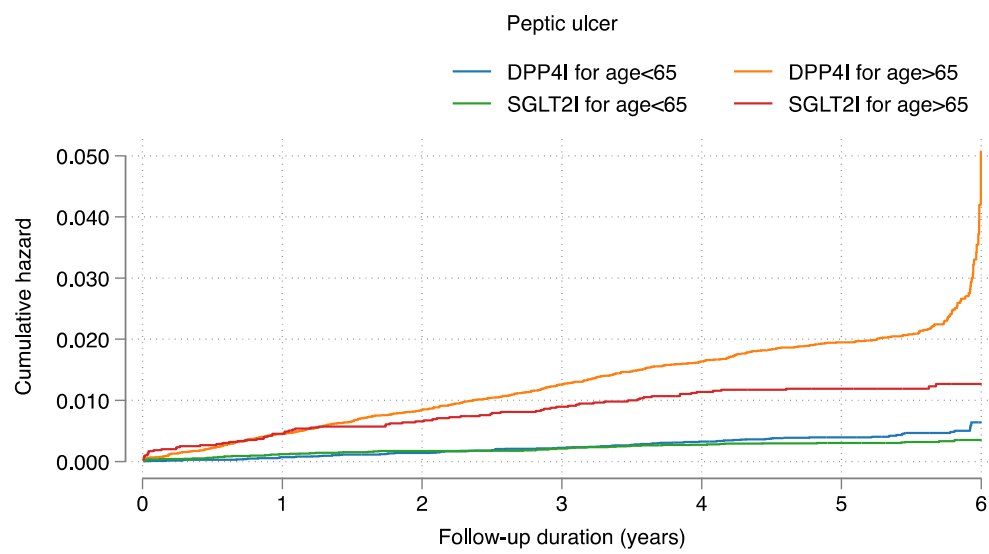
SGLT2I: Sodium-glucose cotransporter-2 inhibitors; DPP4I: Dipeptidyl peptidase-4 inhibitors.



Number at risk

DPP4I for age<65	20124	20113	20035	19841	19487	19142	101
DPP4I for age>65	19292	19215	18736	17735	16336	15104	77
SGLT2I for age<65	17489	17489	17479	17442	17373	17239	85
SGLT2I for age>65	5953	5953	5929	5875	5770	5587	36

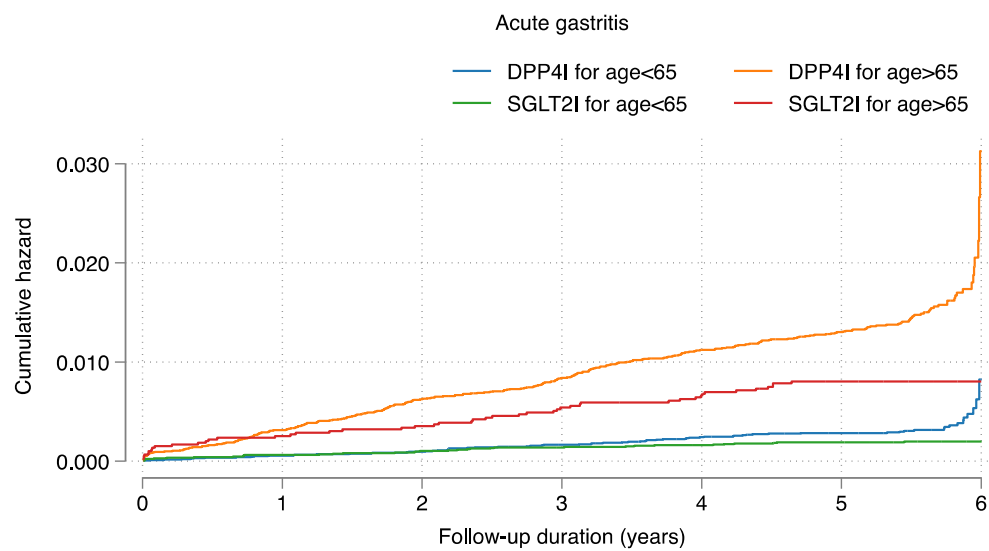
Cumulative incidence curve by drug use before propensity score matching



Number at risk

DPP4I for age<65	20124	20099	20009	19804	19441	19094	101
DPP4I for age>65	19292	19134	18600	17569	16172	14951	75
SGLT2I for age<65	17489	17468	17449	17407	17327	17188	85
SGLT2I for age>65	5953	5926	5892	5825	5711	5533	32

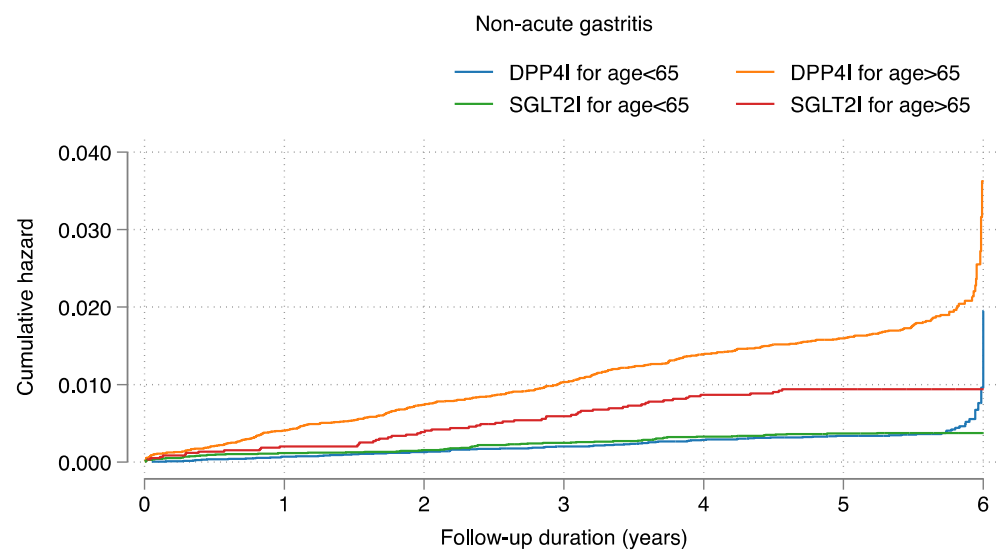
Cumulative incidence curve by drug use before propensity score matching



Number at risk

DPP4I for age<65	20124	20102	20016	19811	19450	19107	101
DPP4I for age>65	19292	19159	18636	17630	16223	15000	77
SGLT2I for age<65	17489	17478	17462	17419	17347	17211	85
SGLT2I for age>65	5953	5938	5910	5847	5738	5551	35

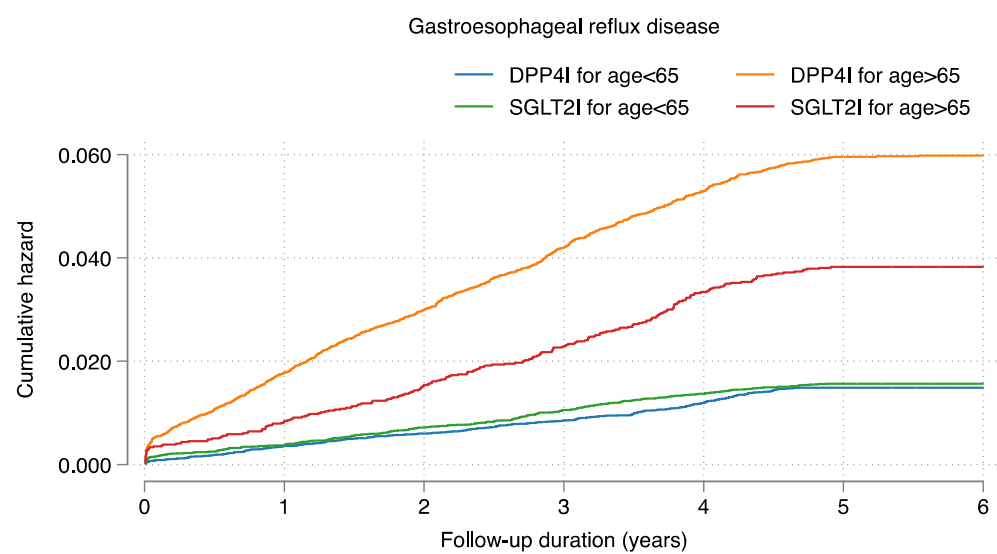
Cumulative incidence curve by drug use before propensity score matching



Number at risk

DPP4I for age<65	20124	20099	20009	19805	19444	19097	101
DPP4I for age>65	19292	19142	18614	17602	16199	14982	77
SGLT2I for age<65	17489	17469	17452	17399	17317	17181	85
SGLT2I for age>65	5953	5941	5910	5844	5727	5546	33

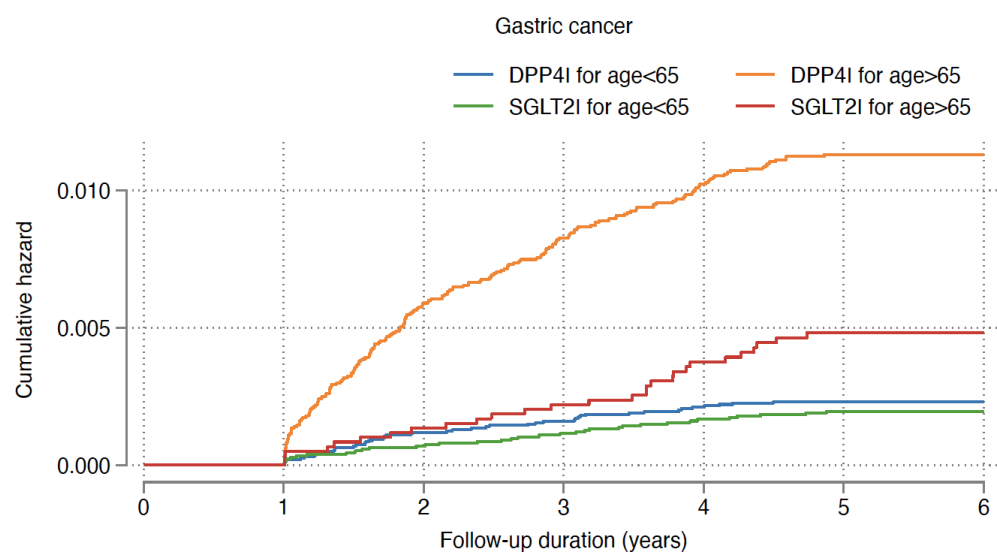
Cumulative incidence curve by drug use before propensity score matching



Number at risk

DPP4I for age<65	20124	20041	19919	19689	19293	18919	100
DPP4I for age>65	19292	18885	18227	17126	15707	14512	72
SGLT2I for age<65	17489	17424	17357	17264	17147	16989	83
SGLT2I for age>65	5953	5904	5842	5750	5600	5409	34

Cumulative incidence curve by drug use before propensity score matching



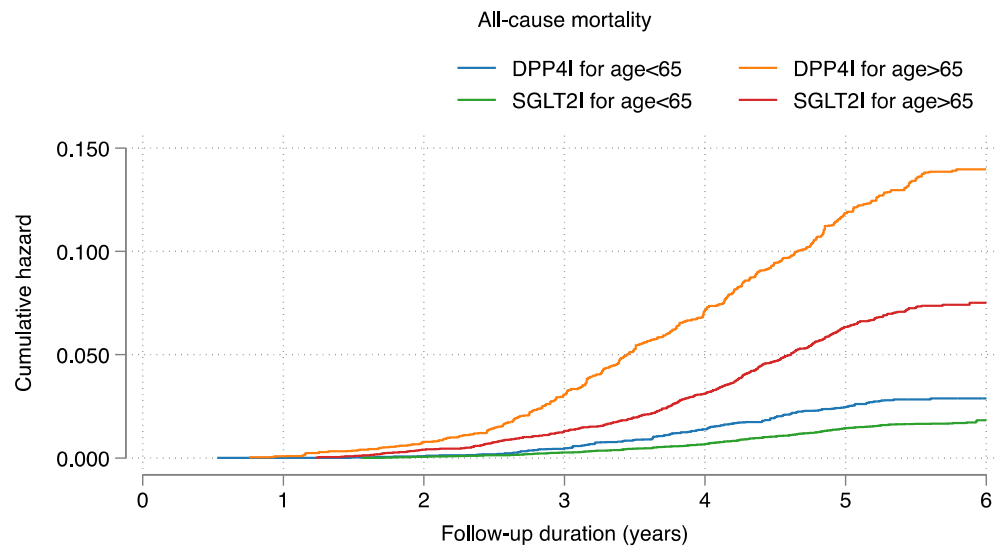
Number at risk

DPP4I for age<65	20124	20113	20011	19812	19453	19107	101
DPP4I for age>65	19292	19213	18630	17613	16224	14995	76
SGLT2I for age<65	17489	17479	17446	17391	17309	17168	85
SGLT2I for age>65	5953	5951	5913	5848	5730	5543	36

Cumulative incidence curve by drug use before propensity score matching

Supplementary Figure 3A. Cumulative incidence curves for new onset gastric outcomes and all-cause mortality stratified by combinations of age and drug exposure effects of SGLT2I and DPP4I before propensity score matching.

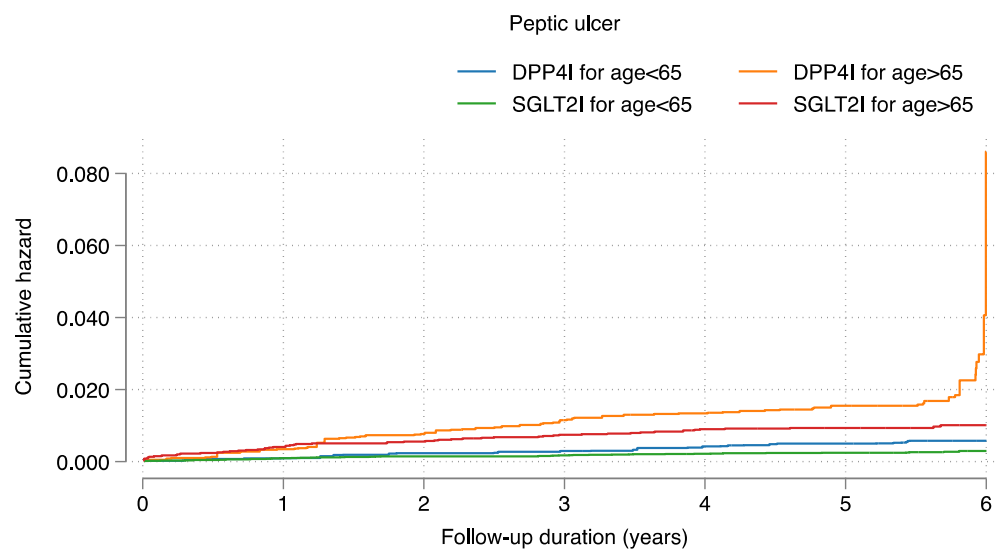
SGLT2I: Sodium-glucose cotransporter-2 inhibitors; DPP4I: Dipeptidyl peptidase-4 inhibitors.



Number at risk

DPP4I for age<65	17269	17268	17255	17188	17030	16850	90
DPP4I for age>65	6173	6168	6125	5986	5750	5483	52
SGLT2I for age<65	17489	17489	17479	17442	17373	17239	85
SGLT2I for age>65	5953	5953	5929	5875	5770	5587	36

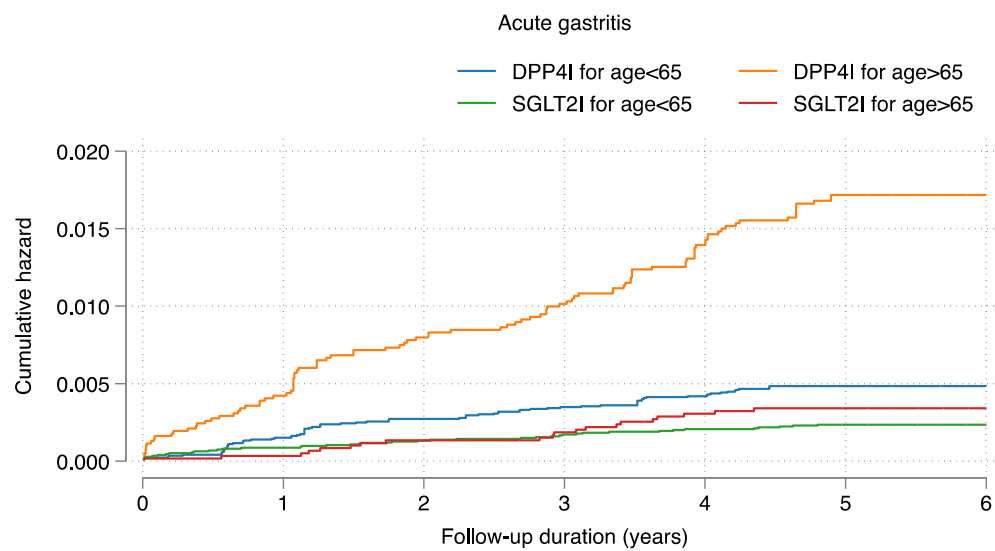
Cumulative incidence curve by drug use after propensity score matching



Number at risk

DPP4I for age<65	17269	17252	17215	17142	16972	16795	90
DPP4I for age>65	6173	6147	6078	5933	5698	5430	52
SGLT2I for age<65	17489	17473	17454	17414	17337	17199	85
SGLT2I for age>65	5953	5929	5898	5834	5724	5546	34

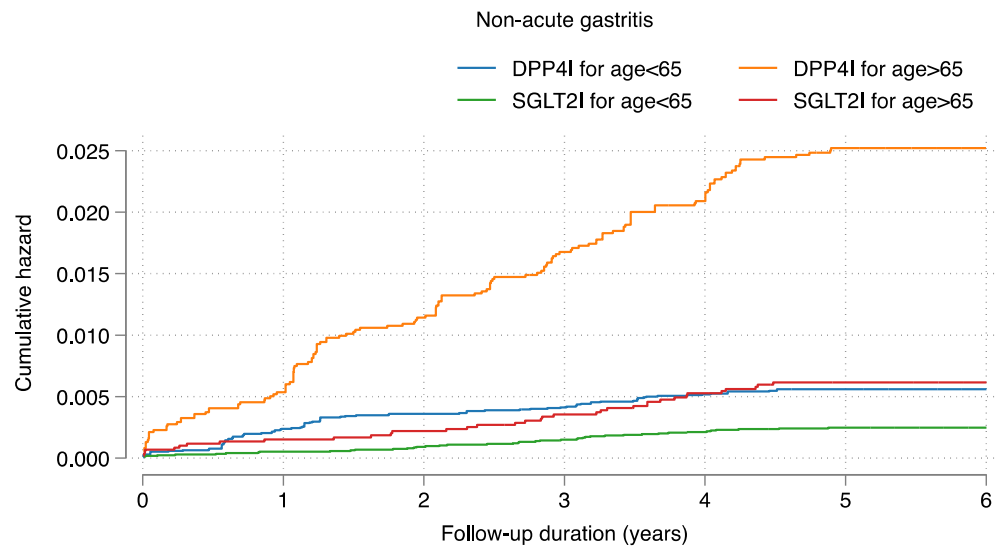
Cumulative incidence curve by drug use after propensity score matching



Number at risk

DPP4I for age<65	17269	17242	17209	17129	16966	16785	90
DPP4I for age>65	6173	6142	6078	5932	5680	5404	50
SGLT2I for age<65	17489	17474	17456	17412	17338	17200	85
SGLT2I for age>65	5953	5951	5922	5866	5755	5571	36

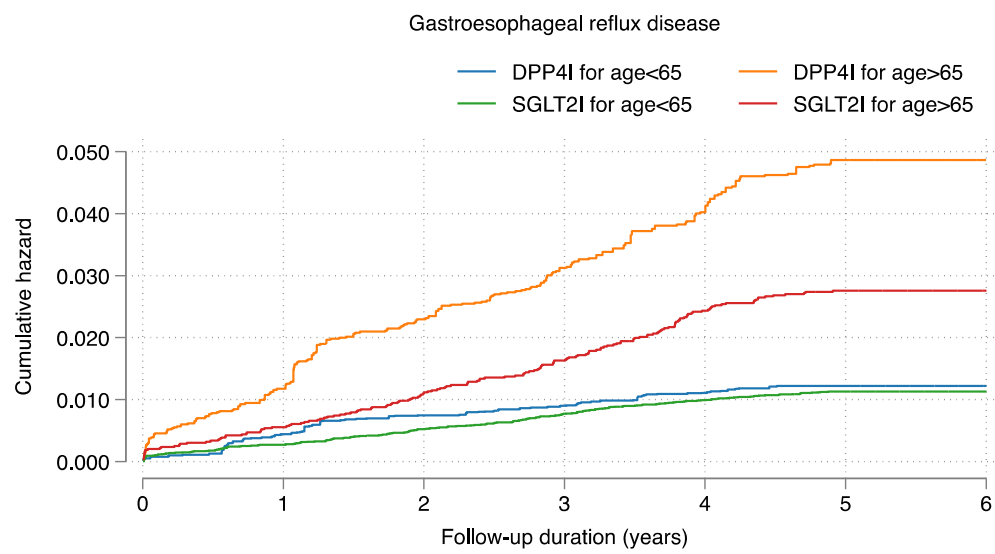
Cumulative incidence curve by drug use after propensity score matching



Number at risk

DPP4I for age<65	17269	17227	17193	17119	16948	16765	90
DPP4I for age>65	6173	6135	6059	5895	5641	5369	51
SGLT2I for age<65	17489	17480	17464	17418	17338	17201	85
SGLT2I for age>65	5953	5944	5917	5858	5744	5557	35

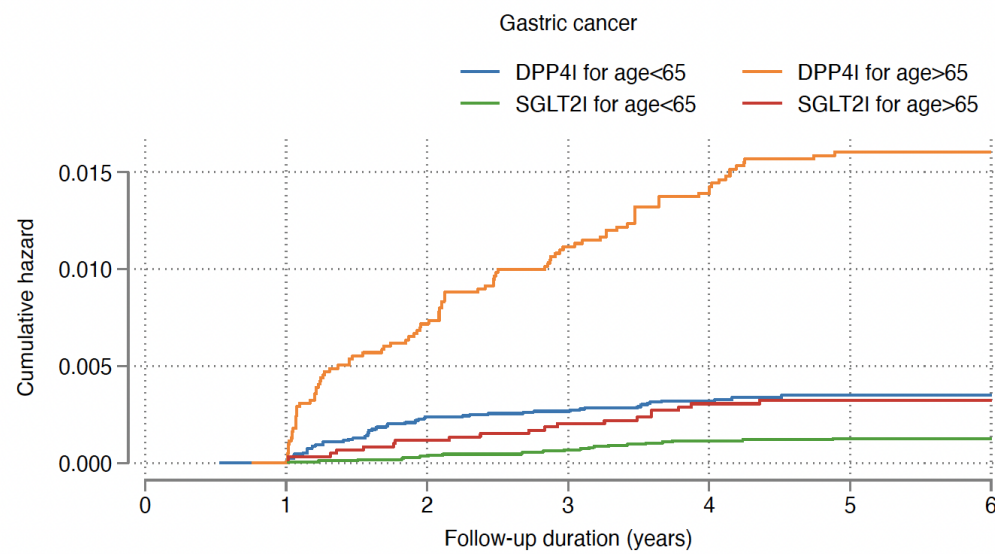
Cumulative incidence curve by drug use after propensity score matching



Number at risk

DPP4I for age<65	17269	17192	17128	17036	16858	16675	90
DPP4I for age>65	6173	6097	5992	5817	5544	5263	49
SGLT2I for age<65	17489	17442	17390	17312	17210	17060	83
SGLT2I for age>65	5953	5920	5867	5787	5648	5463	34

Cumulative incidence curve by drug use after propensity score matching



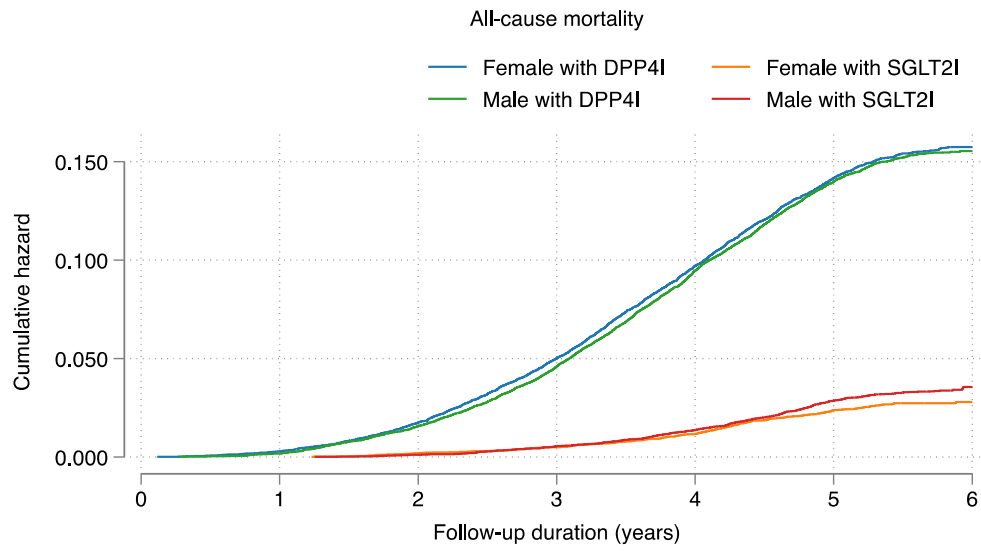
Number at risk

DPP4I for age<65	17269	17268	17214	17144	16980	16797	90
DPP4I for age>65	6173	6168	6085	5926	5677	5410	51
SGLT2I for age<65	17489	17489	17474	17431	17354	17218	85
SGLT2I for age>65	5953	5953	5923	5865	5755	5571	36

Cumulative incidence curve by drug use after propensity score matching

SGLT2I: sodium glucose cotransporter-2 inhibitor; DPP4I: dipeptidyl peptidase-4 inhibitor

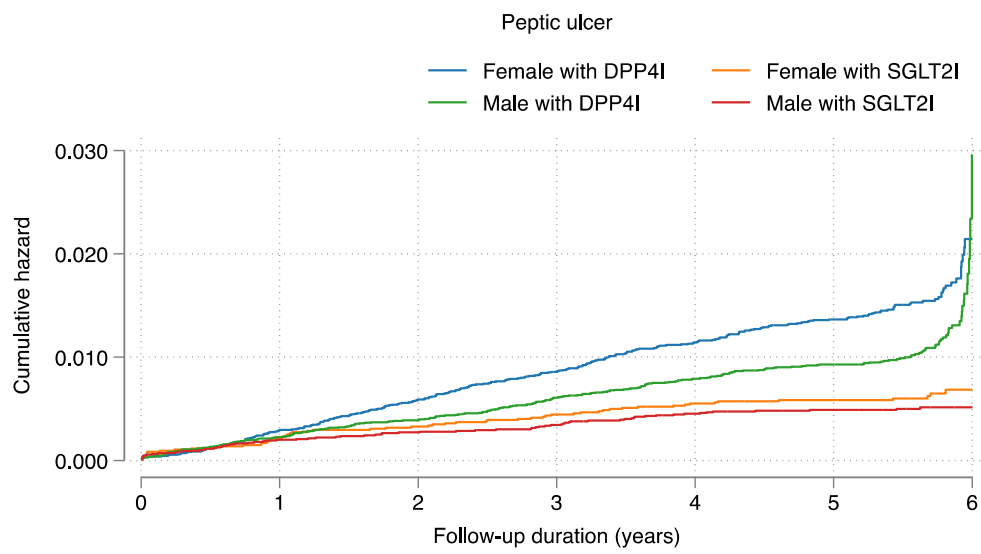
Supplementary Figure 3B. Cumulative incidence curves for new onset gastric outcomes and all-cause mortality stratified by combinations of age and drug exposure effects of SGLT2I and DPP4I in the matched cohort.



Number at risk

Female with DPP4I	18235	18184	17919	17345	16552	15826	81
Female with SGLT2I	9463	9463	9445	9416	9353	9241	47
Male with DPP4I	21181	21144	20852	20231	19271	18420	97
Male with SGLT2I	13979	13979	13963	13901	13790	13585	74

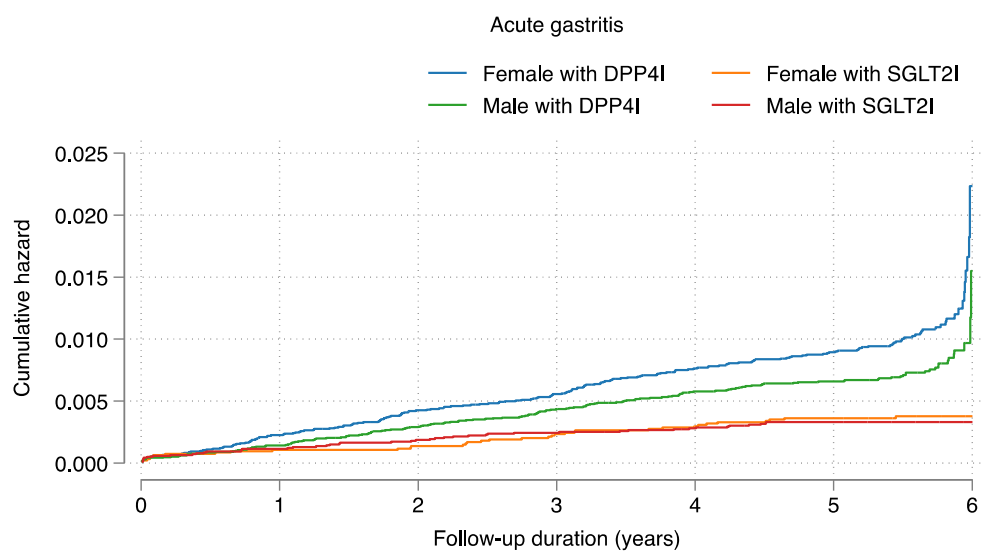
Cumulative incidence curve by drug use before propensity score matching



Number at risk

Female with DPP4I	18235	18134	17829	17238	16438	15716	80
Female with SGLT2I	9463	9443	9415	9375	9305	9196	46
Male with DPP4I	21181	21099	20780	20135	19175	18329	96
Male with SGLT2I	13979	13951	13926	13857	13733	13525	71

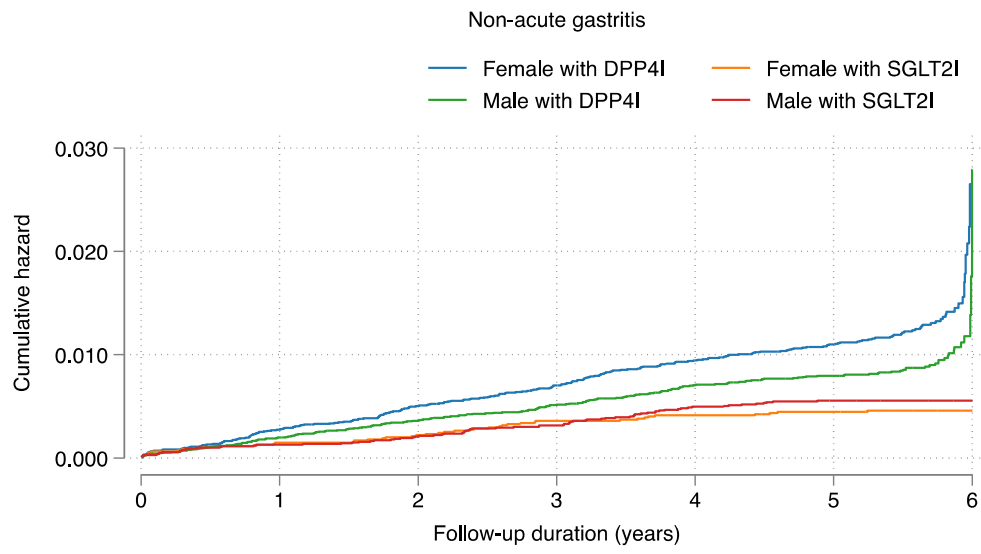
Cumulative incidence curve by drug use before propensity score matching



Number at risk

Female with DPP4I	18235	18144	17853	17275	16476	15751	81
Female with SGLT2I	9463	9453	9434	9396	9329	9214	47
Male with DPP4I	21181	21117	20799	20166	19197	18356	97
Male with SGLT2I	13979	13963	13938	13870	13756	13548	73

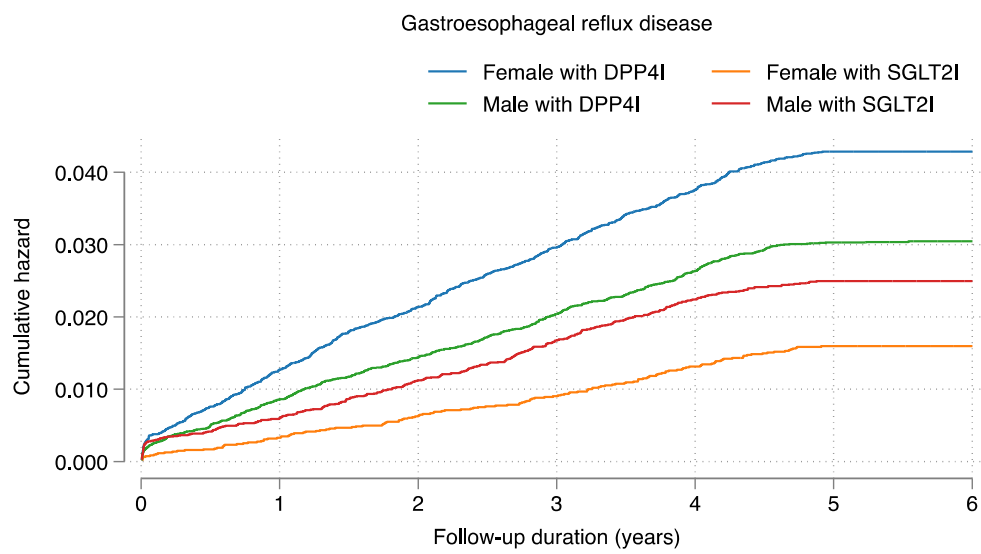
Cumulative incidence curve by drug use before propensity score matching



Number at risk

Female with DPP4I	18235	18135	17839	17256	16461	15739	81
Female with SGLT2I	9463	9449	9427	9385	9320	9210	47
Male with DPP4I	21181	21106	20784	20151	19182	18340	97
Male with SGLT2I	13979	13961	13935	13858	13724	13517	71

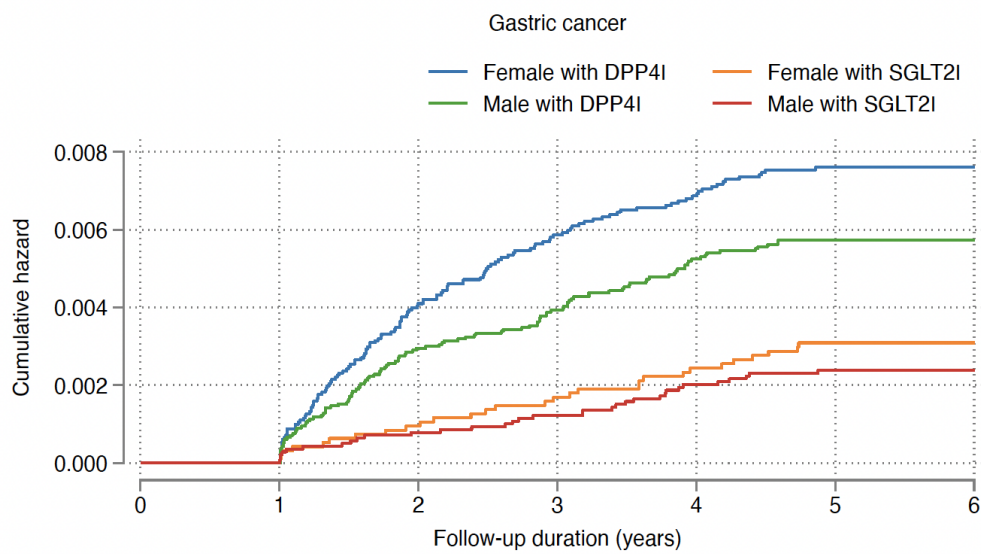
Cumulative incidence curve by drug use before propensity score matching



Number at risk

Female with DPP4I	18235	17959	17577	16932	16107	15388	77
Female with SGLT2I	9463	9432	9387	9333	9236	9108	44
Male with DPP4I	21181	20967	20569	19883	18893	18043	95
Male with SGLT2I	13979	13896	13812	13681	13511	13290	73

Cumulative incidence curve by drug use before propensity score matching

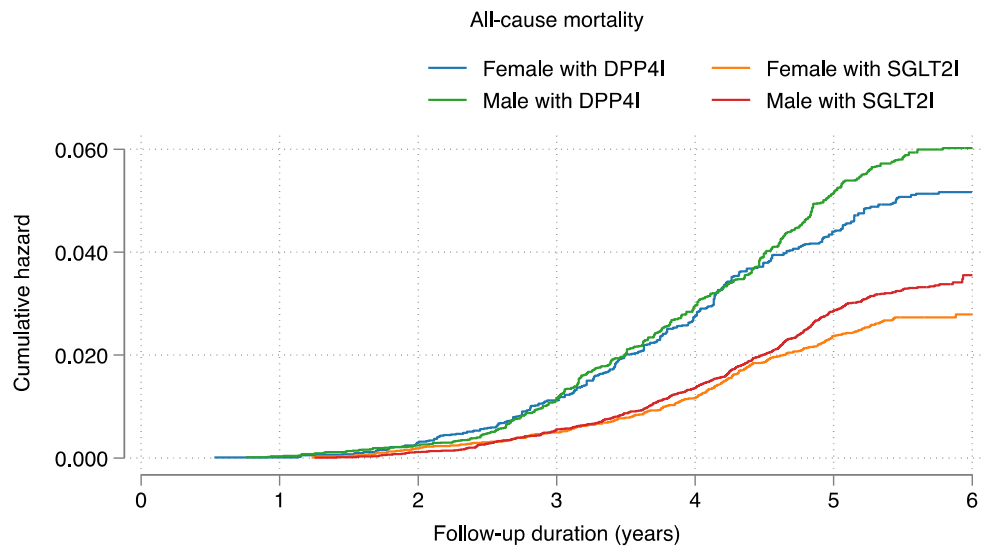


Number at risk

Female with DPP4I	18235	18184	17849	17261	16475	15748	81
Female with SGLT2I	9463	9463	9435	9395	9322	9205	47
Male with DPP4I	21181	21142	20792	20164	19202	18354	96
Male with SGLT2I	13979	13967	13924	13844	13717	13506	74

Cumulative incidence curve by drug use before propensity score matching

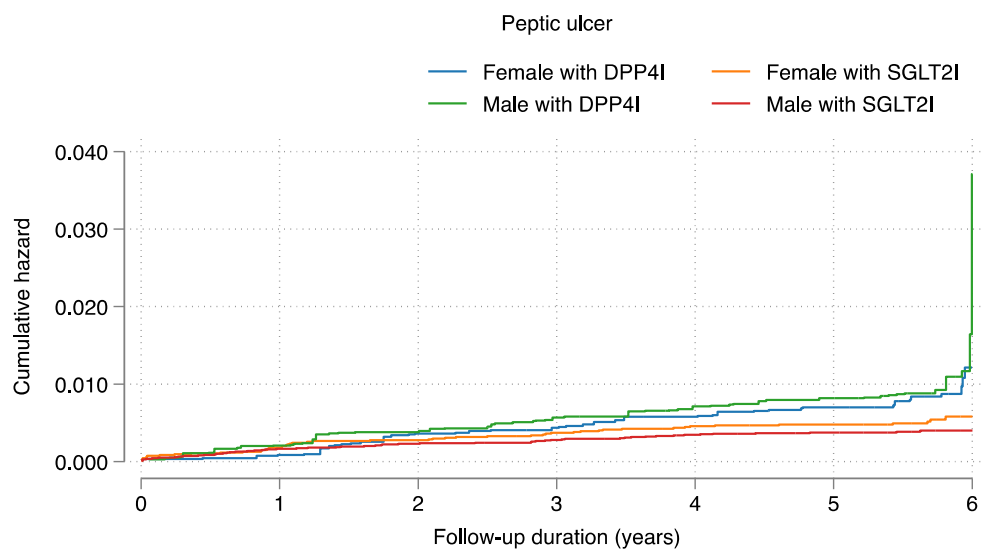
Supplementary Figure 4A. Cumulative incidence curves for new onset gastric outcomes and all-cause mortality stratified by combinations of gender and drug exposure effects of SGLT2I and DPP4I before propensity score matching.
 SGLT2I: Sodium-glucose cotransporter-2 inhibitors; DPP4I: Dipeptidyl peptidase-4 inhibitors.



Number at risk

Female with DPP4I	9429	9428	9401	9324	9174	9023	45
Female with SGLT2I	9463	9463	9445	9416	9353	9241	47
Male with DPP4I	14013	14008	13979	13850	13606	13310	97
Male with SGLT2I	13979	13979	13963	13901	13790	13585	74

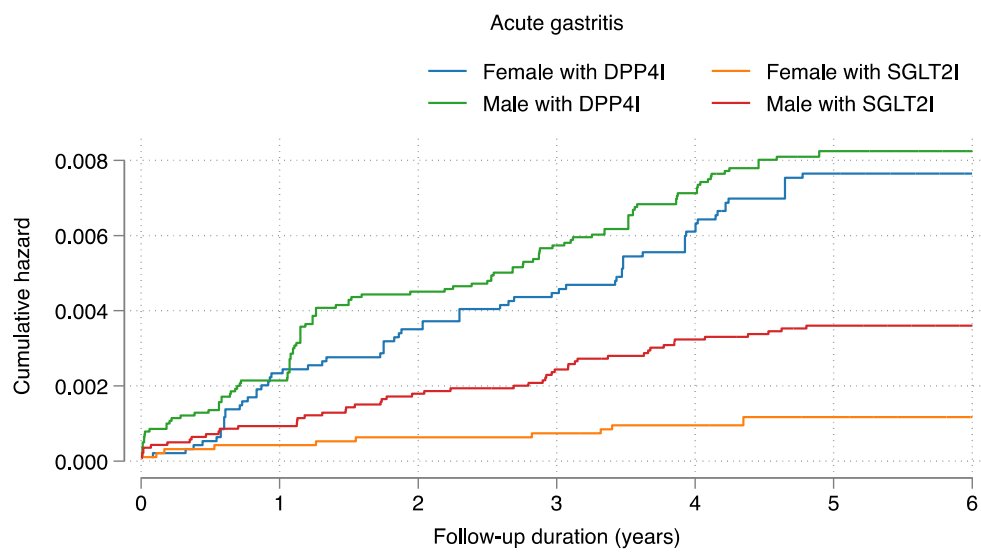
Cumulative incidence curve by drug use after propensity score matching



Number at risk

Female with DPP4I	9429	9420	9367	9294	9140	8988	45
Female with SGLT2I	9463	9446	9420	9382	9313	9204	46
Male with DPP4I	14013	13979	13926	13781	13530	13237	97
Male with SGLT2I	13979	13956	13932	13866	13748	13541	73

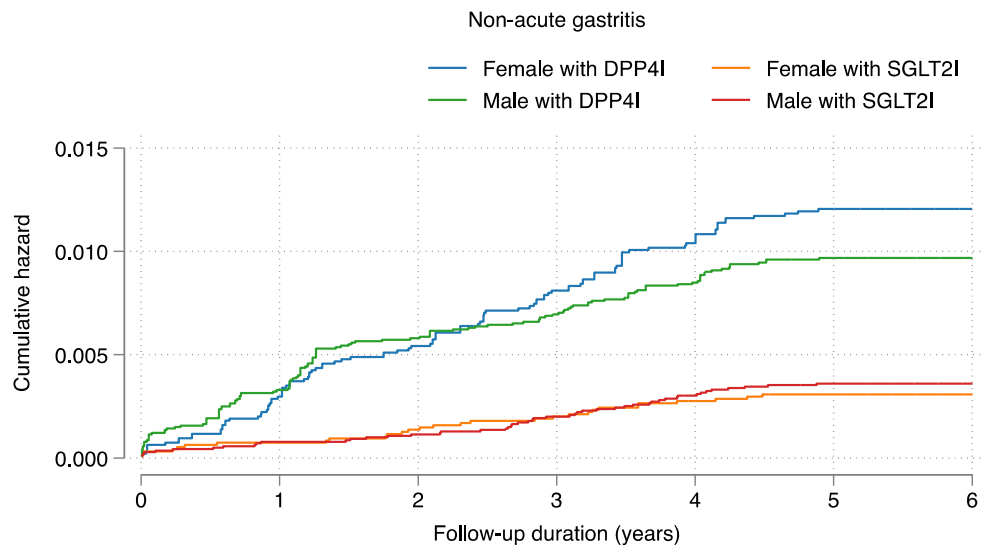
Cumulative incidence curve by drug use after propensity score matching



Number at risk

Female with DPP4I	9429	9406	9370	9286	9124	8963	45
Female with SGLT2I	9463	9459	9439	9409	9345	9232	47
Male with DPP4I	14013	13978	13917	13775	13522	13226	95
Male with SGLT2I	13979	13966	13939	13869	13748	13539	74

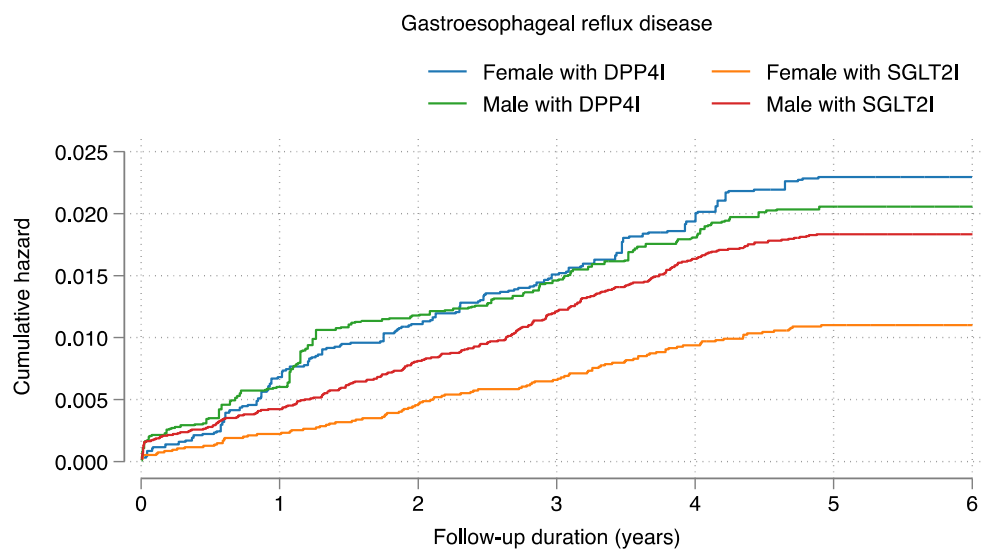
Cumulative incidence curve by drug use after propensity score matching



Number at risk

Female with DPP4I	9429	9400	9354	9253	9088	8938	45
Female with SGLT2I	9463	9456	9433	9399	9329	9214	46
Male with DPP4I	14013	13962	13898	13761	13501	13196	96
Male with SGLT2I	13979	13968	13948	13877	13753	13544	74

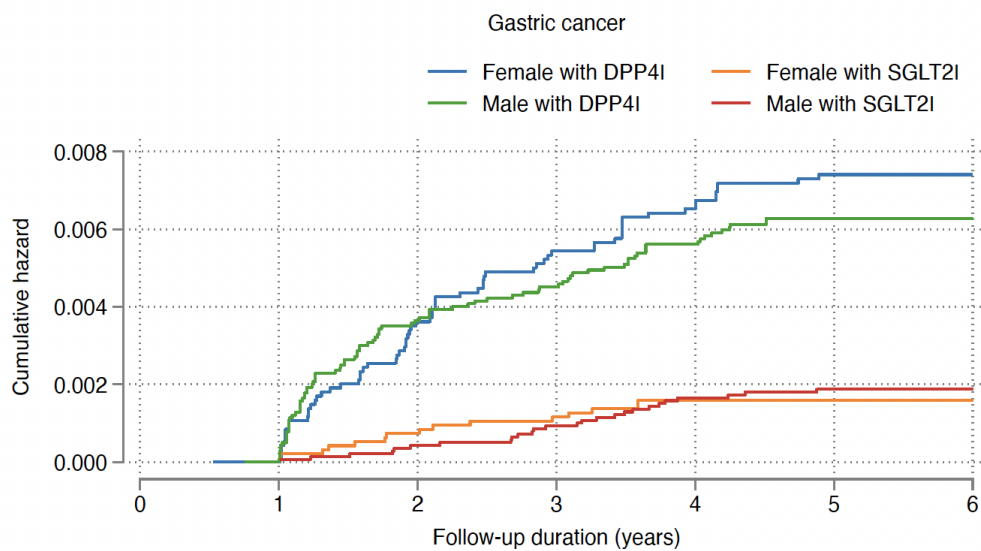
Cumulative incidence curve by drug use after propensity score matching



Number at risk

Female with DPP4I	9429	9364	9303	9192	9013	8853	45
Female with SGLT2I	9463	9442	9403	9356	9269	9150	44
Male with DPP4I	14013	13925	13817	13661	13389	13085	94
Male with SGLT2I	13979	13920	13854	13743	13589	13373	73

Cumulative incidence curve by drug use after propensity score matching



Number at risk

Female with DPP4I	9429	9428	9371	9277	9121	8972	45
Female with SGLT2I	9463	9463	9439	9406	9339	9227	47
Male with DPP4I	14013	14008	13928	13793	13536	13235	96
Male with SGLT2I	13979	13979	13958	13890	13770	13562	74

Cumulative incidence curve by drug use after propensity score matching

Supplementary Figure 4B. Cumulative incidence curves for new onset gastric outcomes and all-cause mortality stratified by combinations of gender and drug exposure effects of SGLT2I and DPP4I in the matched cohort.

SGLT2I: Sodium-glucose cotransporter-2 inhibitors; DPP4I: Dipeptidyl peptidase-4 inhibitors.

Supplementary Table 1. The International Classification of Diseases, Clinical Modification (ICD-9-CM) codes for definitions of past comorbidities and outcomes.

HBV: hepatitis B virus; HCV: hepatitis C virus

Adverse gastric outcomes of interest
Peptic ulcer: 531–533
Acute gastritis: 535.0
Non-acute gastritis: 535.1–535.4, 535.7
Gastroesophageal reflux disease: 530.81, 530.11
Gastric cancer: 151, 151.0, 151.1, 151.2, 151.3, 151.4, 151.5, 151.6, 151.8, 151.9, 230.2
Past comorbidities
Cancer: 140-239, excluded gastric cancer
Hypertension: 401 401.1 401.9 402 402.01 402.1 402.11 402.9 402.91 403 403.01 403.1 403.11 403.9 403.91 404 404.01 404.02 404.03 404.1 404.11 404.12 404.13 404.9 404.91 404.92 404.93 405 405.01 405.09 405.1 405.11 405.19 405.9 405.91 405.99 437.2
Chronic liver disease and cirrhosis: 571.0 571.1 571.2 571.3 571.40 571.41 571.42 471.49 571.5 571.6 571.8, 571.9
HBV infection: 070.20–070.23, 070.30–070.33, V02.61
HCV infection: 070.41, 070.44, 070.51, 070.54, 070.7, 070.70, 070.71
History of acute liver injury: 570 572.2
Other liver disease: 275.1 275.0 572.0 572.4 572.1 572.3 572.8 573.0 573.4 573.8 573.9
Autoimmune diseases: 136.1, 359.79, 359.71, 443.1, 446, 555, 556.8~556.9, 556.0~556.6, 695.4, 710, 714, 720, 725
Polyps: 569.0, 211.3
Gastrointestinal bleeding: 578.9
Heart failure: 428 428 428.1 428.2 428.2 428.21 428.22 428.23 428.3 428.3 428.31 428.32 428.33 428.4 428.4 428.41 428.42 428.43 428.9 398.91 402.01 402.11 402.91 404.01 404.03 404.11 404.13 404.91 404.93
Atrial fibrillation: 427.31 429.4
Stroke/transient ischemic attack: 435 435.1 435.2 435.3 435.8 435.9 433.81 433.91 434 436 437 437.1 433.31 433.01 434.01 434.1 434.11 434.9 434.91 437.2 437.3 437.4 437.5 437.6 437.7 437.8 437.9 430 431 432 432.1 432.9
Ischemic heart disease: 410.01 410.02 410.1 410.11 410.12 410.2 410.21 410.22 410.3 410.31 410.32 410.4 410.41 410.42 410.5 410.51 410.52 410.6 410.61 410.62 410.7 410.71 410.72 410.8 410.81 410.82 410.9 410.91 410.92 411 411.1 411.8 411.81 411.89 413 413.1 413.9 414 414.01 414.02 414.03 414.04 414.05 414.06 414.07 414.1 414.11 414.12 414.19 414.2 414.3 414.4 414.8 414.9 410 412
Peripheral vascular disease: 250.7 443.9 443 443.1 443.2 443.21 443.22 443.23 443.24 443.29 443.8 443.81 443.82 443.89 441 443.9 785.4 V43.4

Acute myocardial infarction: 410 410.01 410.02 410.1 410.11 410.12 410.2 410.21 410.22 410.3
410.31 410.32 410.4 410.41 410.42 410.5 410.51 410.52 410.6 410.61 410.62 410.7 410.71
410.72 410.8 410.81 410.82 410.9 410.91 410.92

H. pylori infection: 041.86 (ICD-9 codes) + MIS data + H. pylori eradication therapy

Renal diseases: 582 582.1 582.2 582.4 582.8 582.81 582.89 582.9 583 583 583.1 583.2 583.4
583.6 583.7 585 585.1 585.2 585.3 585.4 585.5 585.6 585.9 586 588 588 588.1 588.8 588.81
588.89 588.9

Supplementary Table 2. Calculations for variability measure

Variability measure	Definition
Standard deviation (SD)	$\sqrt{\frac{\sum_{i=1}^{\text{Number of measurements}} (\text{test}_i - \text{individual mean})^2}{\text{Number of measurements}}}$
Variance	$\frac{\sum_{i=1}^{\text{Number of measurements}} (\text{test}_i - \text{individual mean})^2}{\text{Number of measurements}}$
Standard deviation/Initial (SD/initial)	$\frac{SD}{\text{individual initial value}}$
Coefficient of variation (CV)	$\frac{SD}{\text{individual mean}}$

Supplementary Table 3. Multivariate Cox regression models with adjustments to predict new gastric cancer and gastric diseases in the SGLT2I v.s. DPP4I matched cohort.

* for $p \leq 0.05$, ** for $p \leq 0.01$, *** for $p \leq 0.001$; HR: hazard ratio; CI: confidence interval; SGLT2I: sodium glucose cotransporter-2 inhibitor; DPP4I: dipeptidyl peptidase-4 inhibitor.

Model 1 adjusted for significant demographics.

Model 2 adjusted for significant demographics, and past comorbidities.

Model 3 adjusted for significant demographics, past comorbidities, and non-SGLT2I/DPP4I medications.

Model 4 adjusted for significant demographics, past comorbidities, non-SGLT2I/DPP4I medications, abbreviated MDRD, and NLR

Model 5 adjusted for significant demographics, past comorbidities, non-SGLT2I/DPP4I medications, abbreviated MDRD, NLR, fasting glucose, HbA1c, and duration from earliest diabetes mellitus date to initial drug exposure date.

Characteristics	Peptic ulcer HR [95% CI];P value	Acute gastritis HR [95% CI];P value	Non acute gastritis HR [95% CI];P value	Gastroesophageal reflux disease HR [95% CI];P value	Gastric cancer HR [95% CI];P value	All-cause mortality HR [95% CI];P value
Model 1	0.50[0.39-0.63];<0.0001***	0.33[0.25-0.45];<0.0001***	0.33[0.25-0.42];<0.0001***	0.73[0.64-0.83];<0.0001***	0.27[0.19-0.38];<0.0001***	0.56[0.51-0.62];<0.0001***
Model 2	0.49[0.38-0.62];<0.0001***	0.33[0.25-0.44];<0.0001***	0.32[0.25-0.41];<0.0001***	0.71[0.62-0.81];<0.0001***	0.26[0.18-0.37];<0.0001***	0.55[0.50-0.60];<0.0001***
Model 3	0.534[0.419-0.680];<0.0001***	0.387[0.288-0.520];<0.0001***	0.342[0.264-0.443];<0.0001***	0.798[0.693-0.918];0.0016**	0.277[0.195-0.392];<0.0001***	0.63[0.57-0.69];<0.0001***
Model 4	0.58[0.43-0.78];0.0003***	0.30[0.20-0.44];<0.0001***	0.32[0.23-0.43];<0.0001***	0.60[0.50-0.72];<0.0001***	0.27[0.18-0.41];<0.0001***	0.73[0.64-0.83];<0.0001***
Model 5	0.66[0.47-0.91];0.0118*	0.31[0.20-0.48];<0.0001***	0.35[0.25-0.49];<0.0001***	0.62[0.50-0.76];<0.0001***	0.30[0.19-0.48];<0.0001***	0.77[0.66-0.89];0.0003***

Supplementary Table 4. Sensitivity analysis: Three-arm (only SGLT2I, only DPP4I, and only GLP1a) analysis results using stabilized IPTW

The following exclusion criteria applied

1. With prior peptic ulcer, gastritis, gastroesophageal reflux disease, and gastric cancer (N=108)
2. Patients who died within 30 days after initial drug exposure (N=167)
3. Without complete demographics (N=19)
4. Under 18 years old (N=108)
5. Used at least two drugs from SGLT2I, DPP4I, and GLP1a (N=12956)
6. New onset gastric cancer development less than 1 year after drug exposure (N=29)

* for $p \leq 0.05$, ** for $p \leq 0.01$, *** for $p \leq 0.001$; HR: hazard ratio; CI: confidence interval; SGLT2I: sodium glucose cotransporter-2 inhibitor; DPP4I: dipeptidyl peptidase-4 inhibitor.

Model	Peptic ulcer HR [95% CI];P value	Acute gastritis HR [95% CI];P value	Non acute gastritis HR [95% CI];P value	Gastroesophageal reflux disease HR [95% CI];P value	Gastric cancer HR [95% CI];P value	All-cause mortality HR [95% CI];P value
DPP4I v.s. SGLT2I	2.19[1.76- 2.72];<0.0001***	3.06[2.33- 4.01];<0.0001***	2.25[1.89- 2.68];<0.0001***	1.58[1.40-1.78];<0.0001***	2.18[1.69- 2.80];<0.0001***	2.57[2.36- 2.79];<0.0001***
GLP1a v.s. SGLT2I	1.57[0.80- 3.05];=0.1864	1.03[0.49-2.19];=0.9343	1.51[0.99-2.32];=0.5818	1.43[1.04-1.97];=0.0299*	2.47[1.27- 4.81];=0.0079**	0.84[0.61-1.15];= 0.2659

Supplementary Table 5. Sensitivity analyses: Exposure effects of SGLT2I v.s. DPP4I on new onset gastric diseases in the SGLT2I v.s. DPP4I matched cohort across different hazard models and matching methods.

* for $p \leq 0.05$, ** for $p \leq 0.01$, *** for $p \leq 0.001$; SGLT2I: Sodium-glucose cotransporter-2 inhibitors; DPP4I: Dipeptidyl peptidase-4 inhibitors; HR: hazard ratio; CI: confidence interval

Model	Peptic ulcer HR [95% CI];P value	Acute gastritis HR [95% CI];P value	Non acute gastritis HR [95% CI];P value	Gastroesophageal reflux disease HR [95% CI];P value	Gastric cancer HR [95% CI];P value	All-cause mortality HR [95% CI];P value
Cause-specific hazard models	0.52[0.41-0.67];<0.0001***	0.354[0.265-0.474];<0.0001***	0.348[0.270-0.449];<0.0001***	0.756[0.659-0.867];<0.0001***	0.282[0.199-0.398];<0.0001***	0.60[0.55-0.66];<0.0001***
Sub-distribution hazard models	0.49[0.38-0.62];<0.0001***	0.33[0.24-0.44];<0.0001***	0.32[0.25-0.41];<0.0001***	0.71[0.62-0.82];<0.0001***	0.26[0.19-0.37];<0.0001***	0.55[0.50-0.60];<0.0001***
PS stratification	0.66[0.47-0.91];0.0124*	0.31[0.20-0.49];<0.0001***	0.34[0.24-0.48];<0.0001***	0.62[0.50-0.76];<0.0001***	0.30[0.19-0.47];<0.0001***	0.77[0.66-0.89];0.0003***
PS with IPTW	0.52[0.40-0.67];<0.0001***	0.35[0.25-0.48];<0.0001***	0.33[0.26-0.44];<0.0001***	0.67[0.57-0.78];<0.0001***	0.27[0.19-0.39];<0.0001***	0.64[0.58-0.72];<0.0001***
PS with SIPTW	0.48[0.38-0.61];<0.0001***	0.33[0.24-0.43];<0.0001***	0.32[0.25-0.41];<0.0001***	0.71[0.62-0.81];<0.0001***	0.26[0.18-0.37];<0.0001***	0.55[0.50-0.60];<0.0001***

Supplementary Table 6. Sensitivity analysis: Excluding patients with CKD stage 4/5 (eGFR <30), peritoneal dialysis or haemodialysis in the SGLT2I v.s. DPP4I matched cohort.

* for $p \leq 0.05$, ** for $p \leq 0.01$, *** for $p \leq 0.001$; SGLT2I: Sodium-glucose cotransporter-2 inhibitors; DPP4I: Dipeptidyl peptidase-4 inhibitors; HR: hazard ratio; CI: confidence interval

	Peptic ulcer HR [95% CI];P value	Acute gastritis HR [95% CI];P value	Non-acute gastritis HR [95% CI];P value	Gastroesophageal reflux disease HR [95% CI];P value	Gastric cancer HR [95% CI];P value	All-cause mortality HR [95% CI];P value
SGLT2I v.s. DPP4I	0.45[0.35-0.58];<0.0001***	0.29[0.21-0.40];<0.0001***	0.31[0.24-0.40];<0.0001***	0.59[0.51-0.69];<0.0001***	0.25[0.18-0.36];<0.0001***	0.55[0.50-0.61];<0.0001***

Supplementary Table 7. Sensitivity analysis: Consideration of 1-year lag time effects in the SGLT2I v.s. DPP4I matched cohort.

* for $p \leq 0.05$, ** for $p \leq 0.01$, *** for $p \leq 0.001$; SGLT2I: Sodium-glucose cotransporter-2 inhibitors; DPP4I: Dipeptidyl peptidase-4 inhibitors; HR: hazard ratio; CI: confidence interval

	Peptic ulcer HR [95% CI];P value	Acute gastritis HR [95% CI];P value	Non-acute gastritis HR [95% CI];P value	Gastroesophageal reflux disease HR [95% CI];P value	Gastric cancer HR [95% CI];P value	All-cause mortality HR [95% CI];P value
SGLT2I v.s. DPP4I	0.36[0.27-0.48];<0.0001***	0.33[0.23-0.46];<0.0001***	0.35[0.26-0.47];<0.0001***	0.79[0.67-0.92];0.0028**	0.26[0.18-0.37];<0.0001***	0.55[0.50-0.61];<0.0001***

Supplementary Table 8. Sensitivity analysis: As-treated approach of SGLT2I v.s. DPP4I on new onset gastric diseases in the SGLT2I v.s. DPP4I matched cohort

	Peptic ulcer HR [95% CI];P value	Acute gastritis HR [95% CI];P value	Non-acute gastritis HR [95% CI];P value	Gastroesophageal reflux disease HR [95% CI];P value	Gastric cancer HR [95% CI];P value	All-cause mortality HR [95% CI];P value
SGLT2I v.s. DPP4I	0.40[0.33-0.48];<0.0001***	0.23[0.18-0.29];<0.0001***	0.32[0.28-0.38];<0.0001***	0.57[0.52-0.64];<0.0001***	0.28[0.23-0.36];<0.0001***	0.19[0.18-0.21];<0.0001***