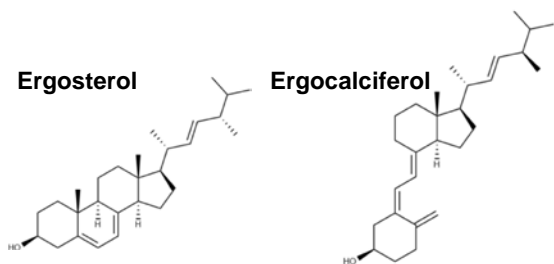


# Supplemental Figure S2

# F18, Ergosterol/Ergocalciferol source fragment (271.1195 $m/z$ , M-H)

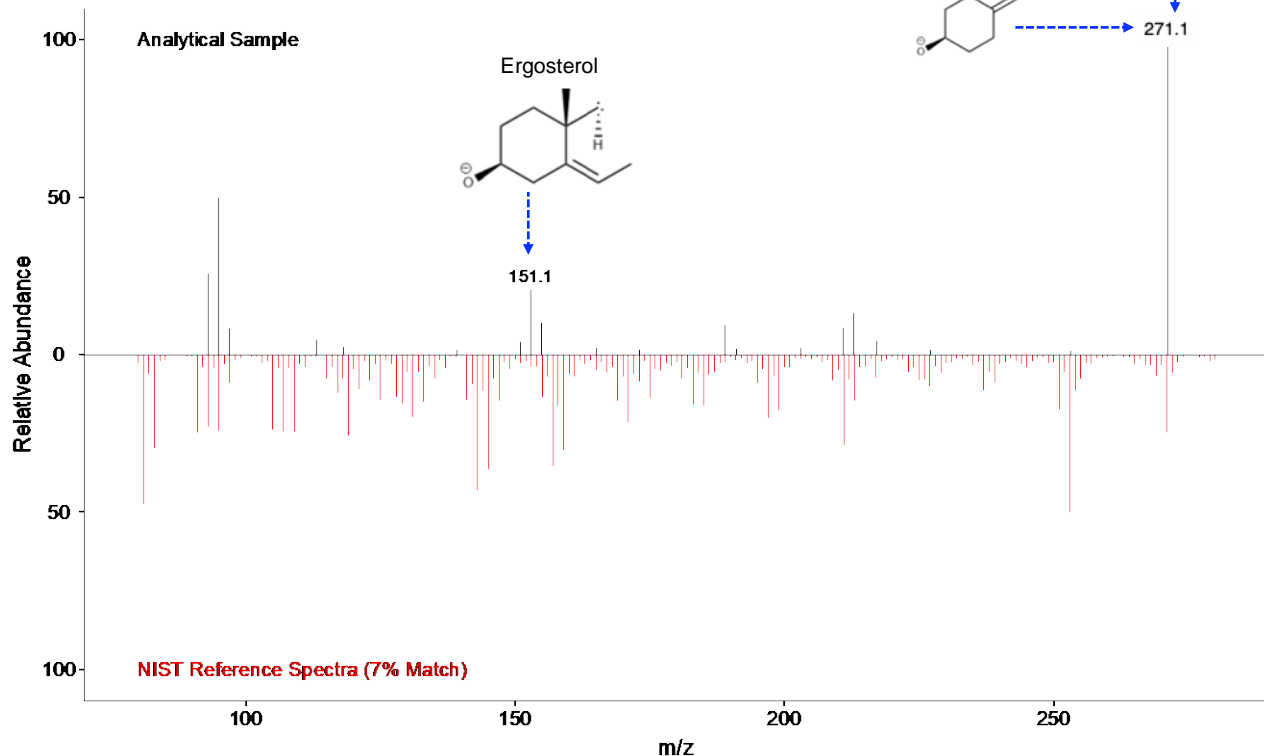
## Note

Fragmentation of 271.1195  $m/z$  showed peaks matching the theoretical structures of ergosterol/ergocalciferol source fragments. The NIST library indicated the fragmentation pattern matched with ergosterol (395.3319  $m/z$ , 7% match) and its isomer ergocalciferol (395.3319  $m/z$ , 7% match).



## Predicted Spectra

Source: NIST Tandem Mass Spectral Library



## F19, Benzoate derivative (M+Br, 214.9728 m/z)

### Note

All HMDB and T3DB  $m/z$  matches for 214.9728  $m/z$  indicate it is likely a M+Br adduct of a benzoate derivative metabolite. LC data shows 214.9728  $m/z$  (+ Br adduct of a benzoate) and a 135.0452  $m/z$  (-H adduct of a benzoate) co-elute.

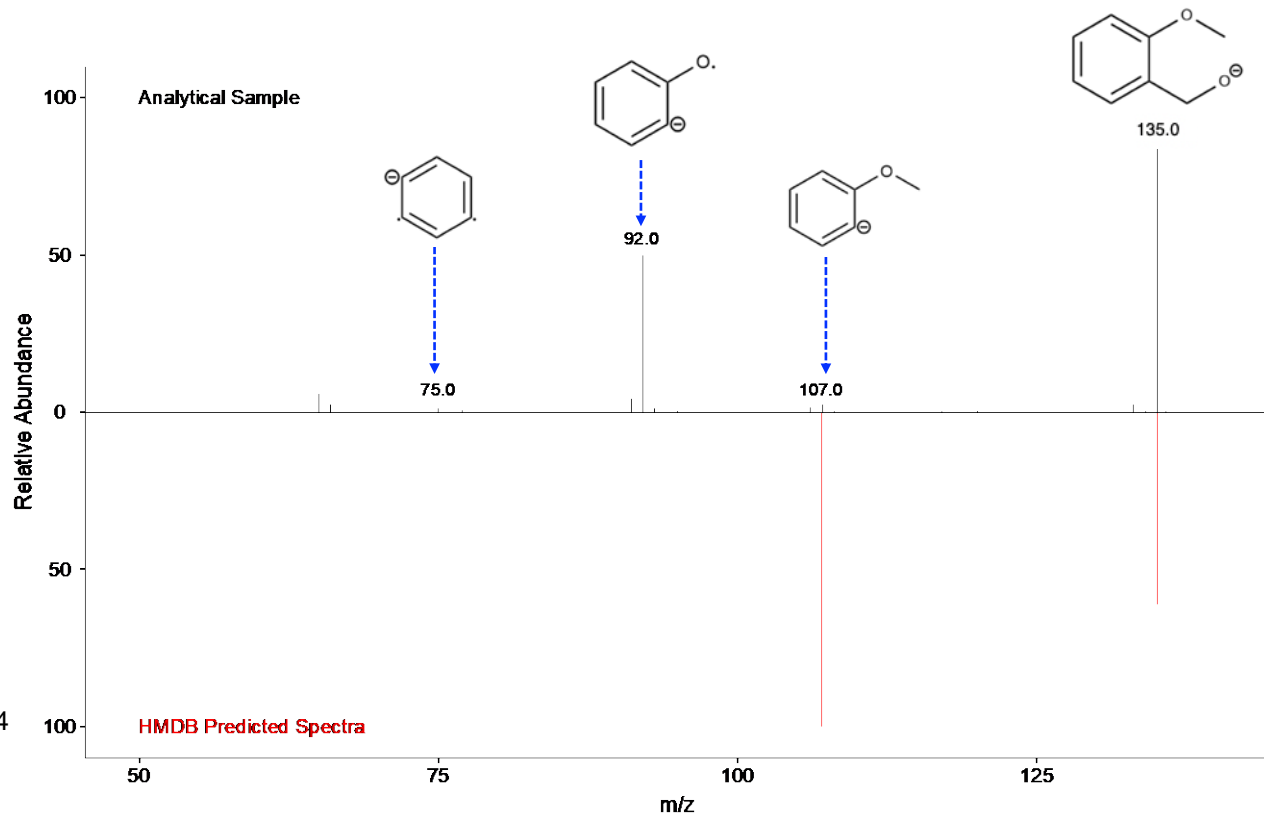
This mass spectrum shows fragmentation of 135.0452  $m/z$  and theoretical fragment structures of a common benzoate derivative, 2-methoxybenzaldehyde, compared to its HMDB predicted spectra.

### Predicted Spectra

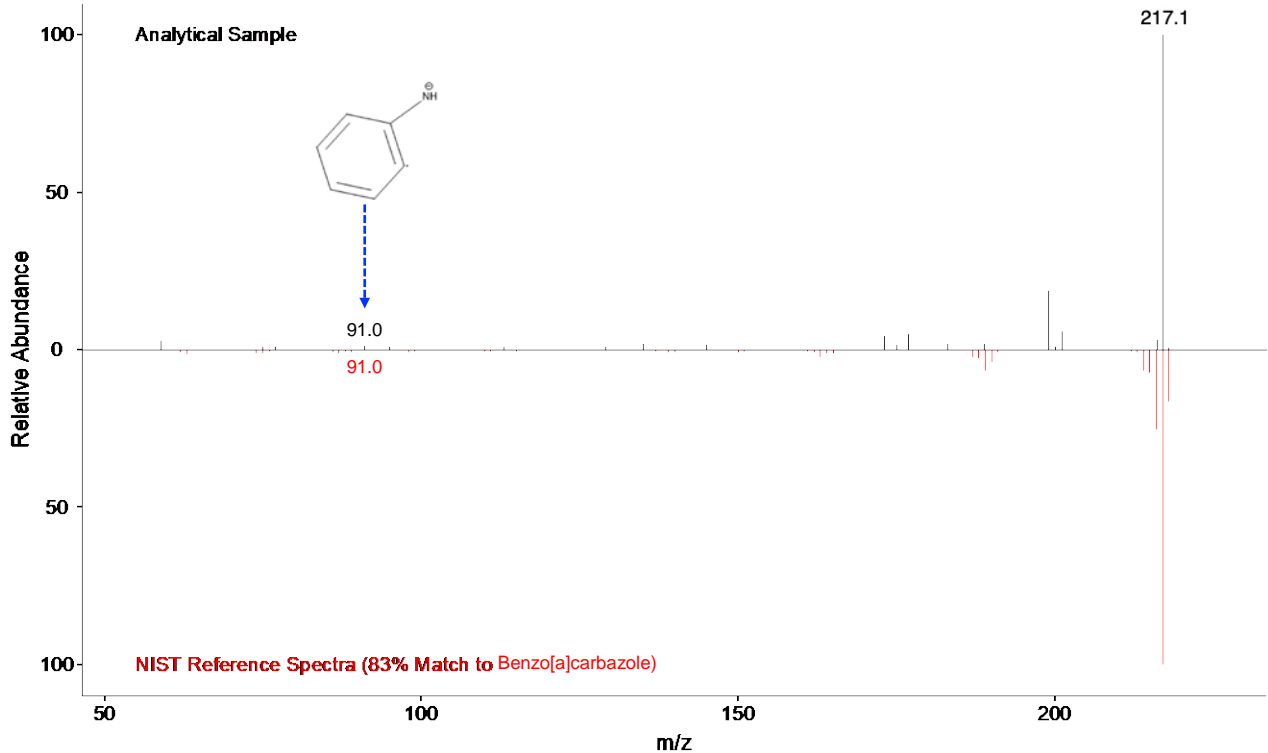
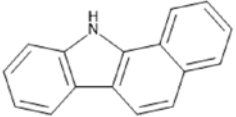
Source: [https://hmdb.ca/spectra/ms\\_ms/2396004](https://hmdb.ca/spectra/ms_ms/2396004)

CE: -10 V

Instrument: LC-MS/MS



# F20, Benzo[a]carbazole, 217.0866 m/z



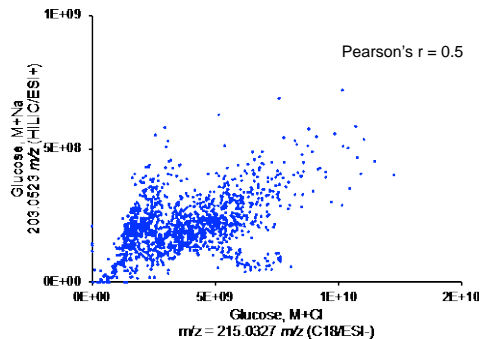
## Reference Spectra

Source: NIST Tandem Mass Spectral Library

## F21, Glucose (215.0327 m/z, M+Cl<sup>-</sup>)

### Note

High signal intensity (E10) and correlates with glucose (M+Na) in HILIC/ESI+ analyses of the same samples.



### Reference Spectra

#### Source:

<https://mona.fiehnlab.ucdavis.edu/spectra/display/K0000804>

CE: -20 V

Instrument: LC-ESI-QQ

