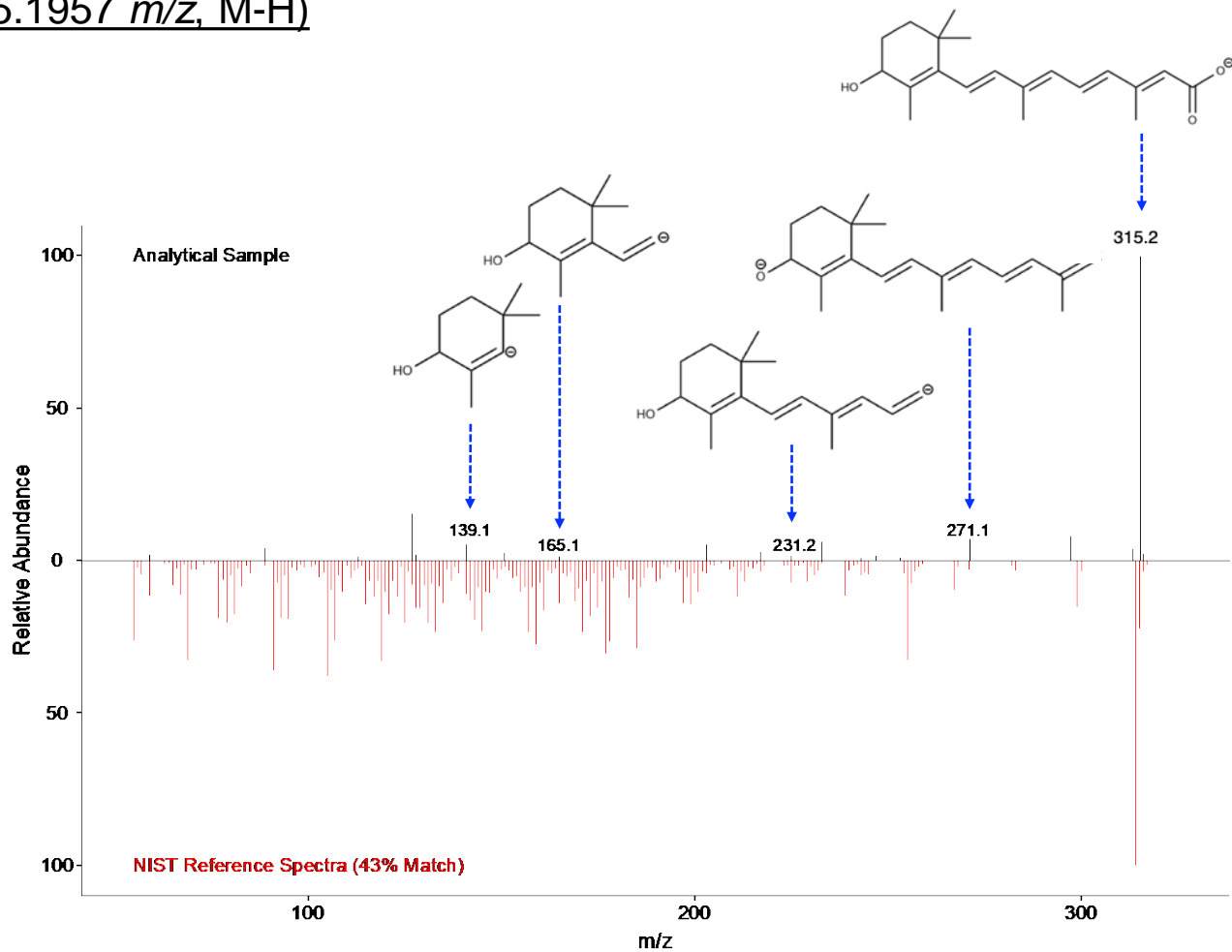
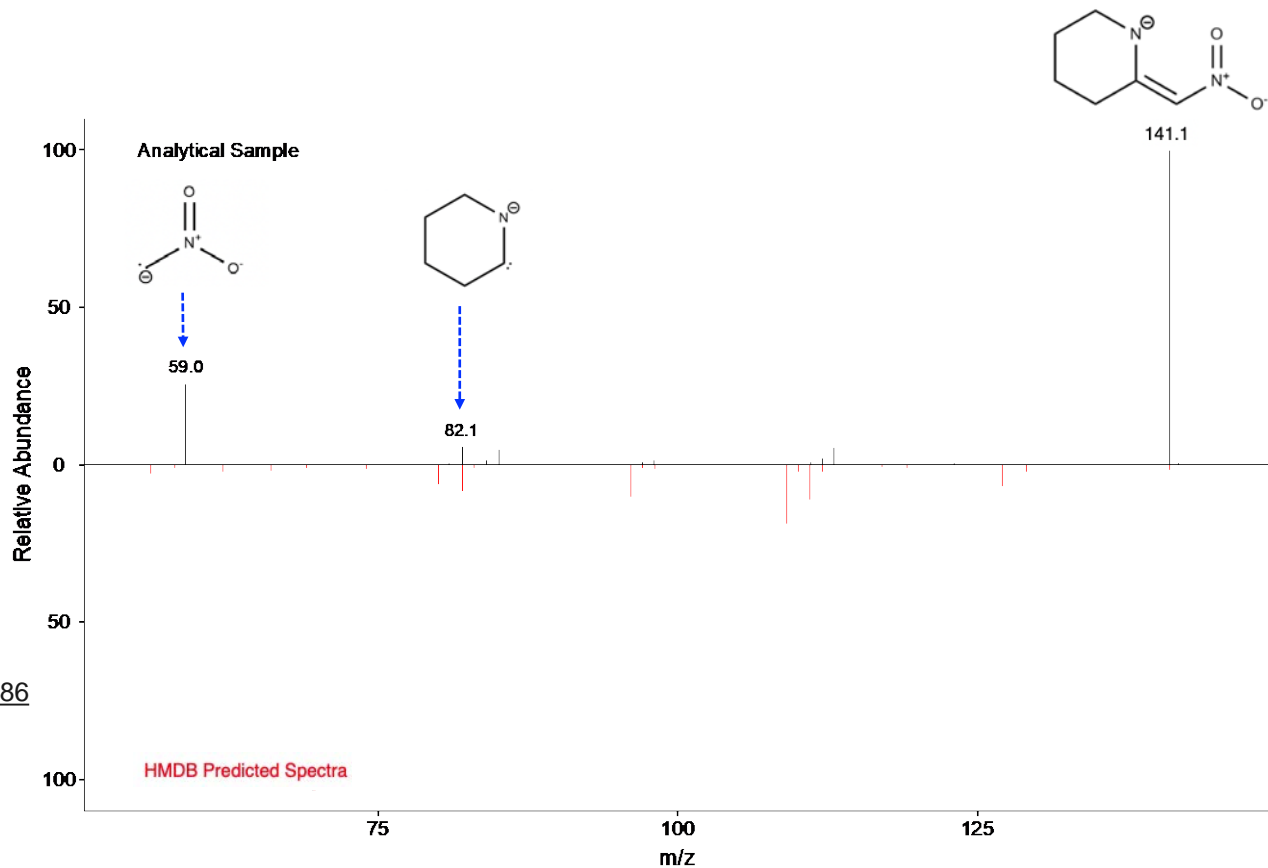


Supplemental Figure S1

F1, 4-Hydroxyretinoic acid (315.1957 m/z, M-H)



F3, 2-Nitromethylene-piperidine (141.067 m/z , M-H)



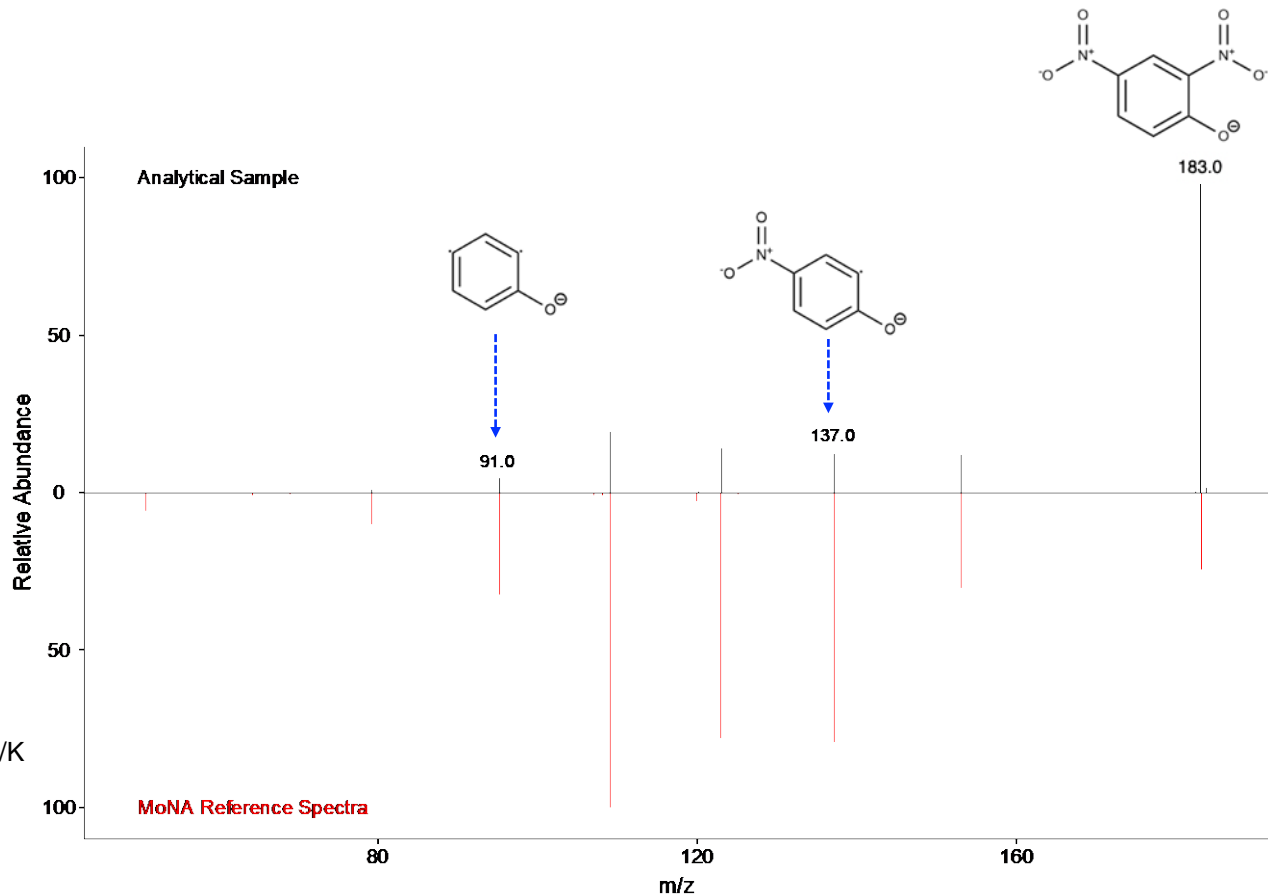
Reference Spectra

Source: http://www.t3db.ca/spectra/ms_ms/144586

CE: -20 V

Instrument: LC-MS/MS

F4, 2,4-Dinitrophenol (183.0046 *m/z*, M-H)



Reference Spectra

Source:

<https://mona.fiehnlab.ucdavis.edu/spectra/display/K0000646>

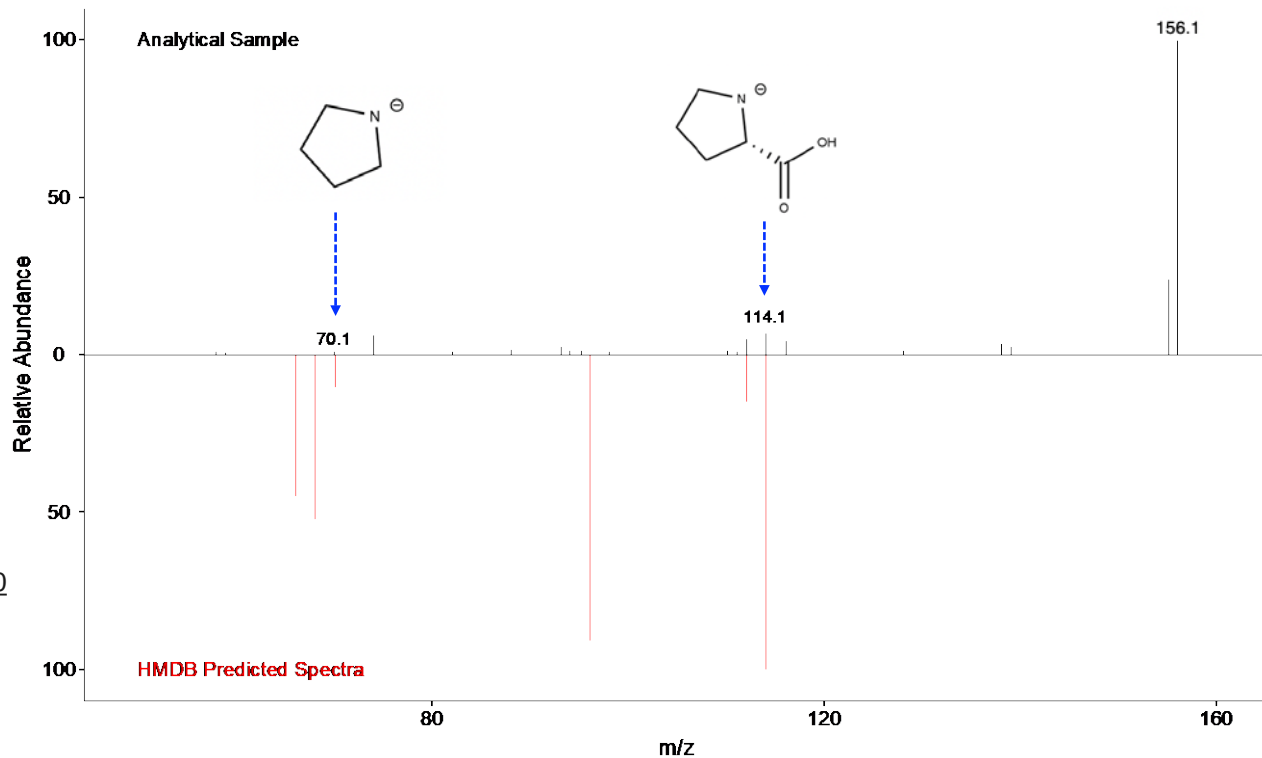
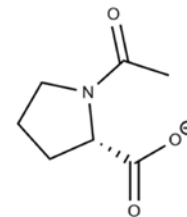
CE: -30 V

Instrument: LC-ESI-QQ

F6, N-Acetylproline (156.0666 m/z , M-H)

Note

Fragmentation pattern is also consistent with MoNA reference spectra. Source: <https://mona.fiehnlab.ucdavis.edu/spectra/display/MoNA023891>



Predicted Spectra

Source: https://hmdb.ca/spectra/ms_ms/2581210

CE: -20 V

Instrument: LC-QTOF