

## EXTENDED DATA

## Extended Data tables

Extended Data Table S1. Power calculations and alpha spending adjustments for group sequential simulations.

	Interim analyses:			Final analysis
	#1 (50 events)	#2 (100 events)	#3 (150 events)	
<b>IRIS</b>				
<i>O'Brien-Fleming</i>	5.58, <0.0001	3.93, <0.0001	3.209, 0.0007	1.965, 0.0250
<i>Pocock</i>	2.402, 0.0082	2.402, 0.0142	2.402, 0.0188	2.402, 0.0250
<i>Alpha-spending Pocock</i>	2.585, 0.0049	2.558, 0.0089	2.529, 0.0124	2.173, 0.0250
<b>SPRINT</b>				
<i>O'Brien-Fleming</i>	6.514, <0.0001	4.604, 0.0003	3.761, 0.0108	1.961, 0.0250
<i>Pocock</i>	2.410, 0.0080	2.410, 0.0139	2.410, 0.0184	2.410, 0.0250
<i>Alpha-spending Pocock</i>	2.686, 0.0036	2.652, 0.0068	2.617, 0.0096	2.121, 0.0250
Assumptions: alpha=0.025 (one-sided), beta=0.80				
<b>Values presented as efficacy boundary (<math>\alpha</math>-value scale), cumulative alpha spent.</b>				
IRIS: Insulin Resistance Intervention after Stroke; SPRINT: Systolic Blood Pressure Intervention Trial.				

**Extended Data Table S2. Summary of baseline features included in IRIS.**

<p>Age at time of blood test                  Modified Rankin grade                  Gender                  Ethnicity                  Race                  Waist-to-hip ratio                  Body mass index</p> <p>Prior history of stroke or transient ischemic attack                  History of diabetes                  Oral steroid use                  History of cancer                  History of liver disease                  History of lung disease                  History of kidney disease                  History of congestive heart failure                  NYHA class                  Carotid artery stenosis                  Atrial fibrillation                  Myocardial infarction history                  History of coronary artery bypass grafting surgery                  History of coronary angioplasty                  History of hypertension                  History of peripheral vascular disease                  History of hypercholesterolemia                  Smoking: ever                  Smoking: current                  Current alcohol use                  Lower extremity edema</p> <p>Ejection fraction (%)</p> <p>Systolic blood pressure                  Diastolic blood pressure</p>	<p>Medications:</p> <ul style="list-style-type: none"> <li>- Oral hypoglycemics</li> <li>- Thiazolidinediones</li> <li>- Insulin use</li> <li>- Non-insulin injectable agents</li> <li>- Oral steroids</li> <li>- ACEi (angiotensin-converting enzyme inhibitor) or ARB (angiotensin II-receptor blocker)</li> <li>- Beta-blockers</li> <li>- Calcium-channel blockers</li> <li>- Thiazide diuretics</li> <li>- Loop diuretics</li> <li>- Statins</li> <li>- Fibrates</li> <li>- Antiarrhythmics</li> <li>- Anticoagulants</li> <li>- Antidepressants</li> <li>- Sedatives and hypnotics</li> <li>- Hormone replacement</li> <li>- Antiplatelet therapy</li> <li>- Mineralocorticoid antagonists</li> <li>- Potassium-sparing diuretics</li> <li>- Use of any antihypertensive therapy</li> </ul> <p>Laboratory measurements:</p> <ul style="list-style-type: none"> <li>- Fasting glucose</li> <li>- HOMA: <i>Homeostatic Model Assessment for Insulin Resistance</i></li> <li>- Total cholesterol</li> <li>- High-density lipoprotein (HDL) levels</li> <li>- Low-density lipoprotein (LDL) levels</li> <li>- Triglycerides</li> <li>- Alanine transaminase (ALT) levels</li> <li>- Hemoglobin</li> <li>- C-reactive protein</li> <li>- Hemoglobin A1c</li> <li>- Bone density measure</li> </ul>
---	---

**Extended Data Table S3. Summary of baseline features included in SPRINT.**

Age	Patient-reported history of heart attack
Female sex	Patient-reported history of irregular heartbeat
Race (White, Black, Hispanic, Other)	Patient-reported history of osteoarthritis
Smoking	Patient-reported history of rheumatoid arthritis
History of cardiovascular disease	Patient-reported history of gout
History of chronic kidney disease	Patient-reported history of other arthritis
History of myocardial infarction	Patient-reported history of hip problems
History of coronary revascularization	Patient-reported history of cancer
Atrial fibrillation/flutter	Patient-reported history of skin cancer
History of angina	Patient-reported history of peripheral vascular disease
Family history of cardiovascular disease	Patient-reported history of thyroid disease
Family history of premature cardiovascular disease	Patient-reported history of anemia
Days per week of vigorous activity	Patient-reported history of hypertension
Patients reports fainting when standing	Patient-reported history of low back pain
Left ventricular hypertrophy by electrocardiography	
Body mass index	
	Use of blood pressure medications at baseline
Standing systolic blood pressure	Number of blood pressure medications
Standing diastolic blood pressure	Aspirin use
Standing heart rate	Statin use
Seating systolic blood pressure	
Seating diastolic blood pressure	Creatinine (serum)
Seating heart rate	Total cholesterol (serum)
Change in systolic blood pressure when standing	Blood urea nitrogen (serum)
Change in diastolic blood pressure when standing	Chloride (serum)
Change in heart rate when standing	Bicarbonate (serum)
	Creatinine (urine)
Montreal Cognitive Assessment (MOCA) score	Fasting glucose (serum)
Digit symbol substitution test score	High-density lipoprotein (serum)
	Potassium (serum)
Acute coronary syndrome	Low-density lipoprotein (serum)
Carotid disease	Sodium (serum)
Peripheral arterial disease revascularisation	Triglycerides (serum)
Known 50% or greater coronary, carotid, peripheral stenosis *	Microalbumin (urine)
Abdominal aortic aneurysm 5 cm or greater or repaired	Urine microalbumin/creatinine ratio
Calcium score 400 or greater	Glomerular filtration rate
Ankle-brachial index 0.9 or lower	
Unable to stand	QRS duration
Congestive heart failure	Cornell Voltage Product
Seizure	Cornell Voltage
Stroke	Sokolow-Lyon index
Transient ischemic attack	Atrial fibrillation or flutter on electrocardiography
Diabetes	
Alcohol use disorder	Framingham risk score
Dizziness	Subjective assessment of general state of health

Extended Data Table S4. Baseline characteristics for the final population across five simulation runs in IRIS.

	Simulations					Original	p-value
	#1	#2	#3	#4	#5		
Final number	2465	3512	3240	3298	3298	3876	
Pioglitazone arm	1236 (50.1)	1759 (50.1)	1631 (50.3)	1655 (50.2)	1642 (49.8)	1939 (50.0)	0.999
Age	63.0 (10.4)	62.9 (10.6)	63.1 (10.5)	63.1 (10.5)	63.1 (10.5)	62.9 (10.6)	0.935
Female sex	877 (35.6)	1203 (34.3)	1160 (35.8)	1178 (35.7)	1186 (36.0)	1338 (34.5)	0.545
Asian race	27 (1.1)	36 (1.0)	33 (1.0)	32 (1.0)	31 (1.0)	42 (1.1)	1.000
Black race	273 (11.3)	374 (10.8)	346 (10.9)	335 (10.3)	343 (10.6)	419 (11.0)	
White race	2086 (86.2)	2988 (86.6)	2759 (86.7)	2826 (87.2)	2819 (87.0)	3291 (86.4)	
Hispanic ethnicity	91 (3.7)	132 (3.8)	117 (3.6)	121 (3.7)	122 (3.7)	147 (3.8)	0.999
Prior history of stroke or TIA	379 (15.5)	583 (16.7)	555 (17.2)	567 (17.3)	589 (18.0)	643 (16.7)	0.216
Hypertension	1840 (75.1)	2433 (69.7)	2328 (72.3)	2367 (72.1)	2376 (72.4)	2770 (71.9)	0.001
Atrial fibrillation	167 (6.8)	240 (6.9)	227 (7.1)	236 (7.2)	239 (7.3)	264 (6.9)	0.966
Myocardial infarction	213 (8.7)	300 (8.6)	274 (8.5)	285 (8.7)	289 (8.8)	324 (8.4)	0.993
Smoking (ever)	1657 (67.2)	2338 (66.6)	2196 (67.8)	2200 (66.8)	2199 (66.7)	2564 (66.2)	0.784
Hypercholesterolemia	1882 (77.2)	2336 (67.2)	2259 (70.4)	2268 (69.5)	2276 (69.7)	2618 (68.2)	<0.001
Body mass index (kg/m <sup>2</sup> )	29.8 (5.5)	29.8 (5.4)	29.8 (5.4)	29.8 (5.4)	29.9 (5.4)	29.9 (5.4)	0.965
Systolic blood pressure (mmHg)	133.3 (17.4)	133.0 (17.2)	133.1 (17.3)	133.2 (17.5)	133.3 (17.4)	133.2 (17.5)	0.985
Diastolic blood pressure (mmHg)	79.1 (10.7)	79.2 (10.6)	79.2 (10.6)	79.2 (10.7)	79.2 (10.6)	79.2 (10.6)	0.999
Modified Rankin scale	1.0 [0.0,2.0]	1.0 [0.0,2.0]	1.0 [0.0,2.0]	1.0 [0.0,2.0]	1.0 [0.0,2.0]	1.0 [0.0,2.0]	0.999
HOMA	5.4 (2.9)	5.5 (3.1)	5.6 (3.1)	5.5 (3.1)	5.5 (3.1)	5.5 (3.0)	0.599
LDL (mg/dL)	87.6 (31.8)	87.2 (31.4)	87.0 (31.4)	86.7 (31.3)	86.9 (31.4)	87.7 (31.5)	0.751
HDL (mg/dL)	47.0 (12.9)	47.3 (12.7)	47.6 (12.9)	47.5 (12.9)	47.6 (12.8)	47.0 (12.7)	0.191
Triglycerides (mg/dL)	142.7 (73.0)	139.9 (72.3)	139.8 (71.7)	140.3 (73.0)	140.0 (72.4)	141.0 (72.7)	0.696
Antihypertensive therapy	2040 (82.8)	2736 (77.9)	2579 (79.6)	2652 (80.4)	2657 (80.6)	3080 (79.5)	<0.001
Statin therapy	2062 (84.0)	2888 (82.5)	2701 (83.7)	2753 (83.8)	2738 (83.3)	3186 (82.5)	0.407
Antiplatelet agents	2274 (92.3)	3220 (91.7)	2976 (91.9)	3028 (91.9)	3023 (91.7)	3557 (91.8)	0.978
Anticoagulation	272 (11.1)	398 (11.4)	361 (11.2)	375 (11.4)	378 (11.5)	441 (11.4)	0.996
ACEi or ARB	1529 (62.1)	1857 (52.9)	1837 (56.7)	1908 (57.9)	1894 (57.5)	2154 (55.6)	<0.001
Beta-blockers	772 (31.4)	1095 (31.3)	991 (30.7)	1047 (31.9)	1053 (32.0)	1228 (31.8)	0.873

ACEi: Angiotensin-converting enzyme inhibitors; ARB: Angiotensin receptor blockers; HDL: High-density lipoprotein; HOMA: Homeostatic Model Assessment for Insulin Resistance; LDL: Low-density lipoprotein; TIA: transient ischemic attack. Continuous variables are summarized as mean (standard deviation) or median [25<sup>th</sup>-75<sup>th</sup> percentile], categorical variables as counts (valid percentages).

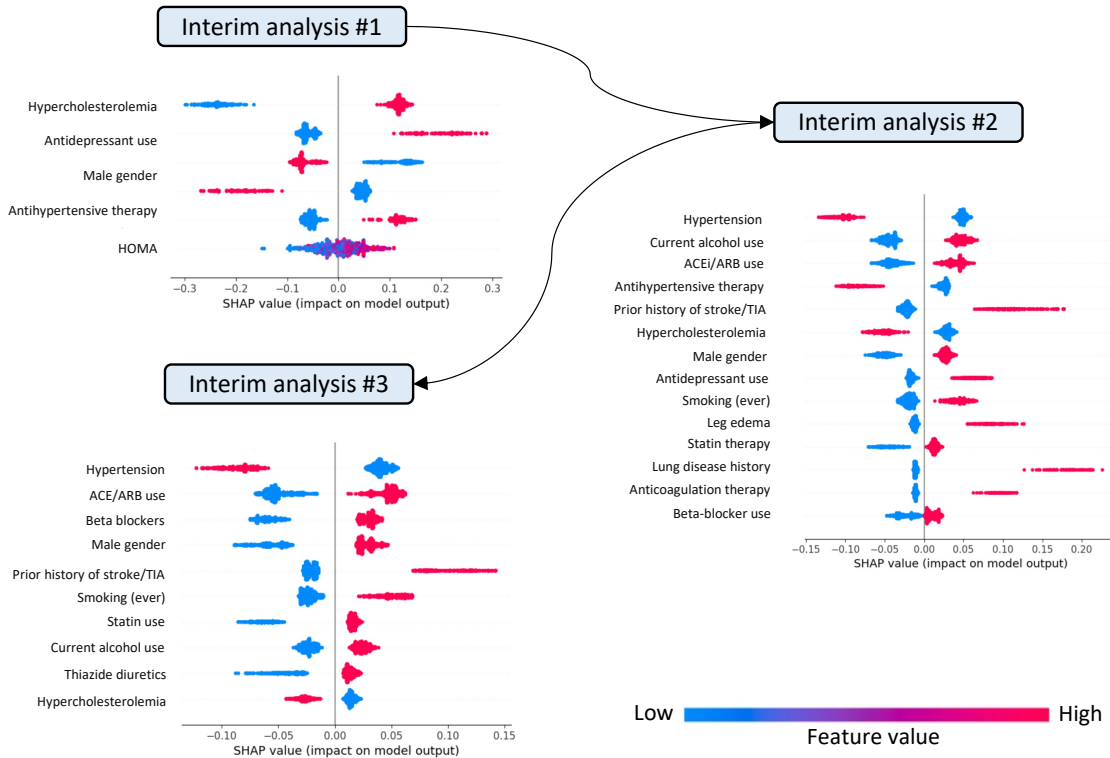
Extended Data Table S5. Baseline characteristics for the final population across five simulation runs in SPRINT.

	Simulations					Original	p-value
	#1	#2	#3	#4	#5		
<b>Total number</b>	<b>6844</b>	<b>7854</b>	<b>5896</b>	<b>6844</b>	<b>6525</b>	<b>9361</b>	
<b>Intensive arm</b>	<b>3485 (50.9)</b>	<b>3893 (49.6)</b>	<b>2926 (49.6)</b>	<b>3485 (50.9)</b>	<b>3222 (49.4)</b>	<b>4678 (50.0)</b>	<b>0.261</b>
<b>Age</b>	68.2 (9.4)	67.8 (9.4)	67.8 (9.4)	68.2 (9.4)	67.6 (9.4)	67.9 (9.4)	0.006
<b>Female sex</b>	2297 (33.6)	2861 (36.4)	2224 (37.7)	2297 (33.6)	2098 (32.2)	3332 (35.6)	<0.001
<i>Non-Hispanic Black</i>	1967 (28.7)	2383 (30.3)	1924 (32.6)	1967 (28.7)	2000 (30.7)	2802 (29.9)	<0.001
<i>Hispanic</i>	721 (10.5)	851 (10.8)	630 (10.7)	721 (10.5)	634 (9.7)	984 (10.5)	
<i>Non-Hispanic White</i>	4016 (58.7)	4467 (56.9)	3223 (54.7)	4016 (58.7)	3752 (57.5)	5399 (57.7)	
<b>BMI (kg/m<sup>2</sup>)</b>	29.8 (5.7)	29.8 (5.8)	29.9 (5.8)	29.8 (5.7)	29.9 (5.7)	29.8 (5.8)	0.970
<b>Blood pressure medications</b>							
<i>Former</i>	3138 (45.9)	3321 (42.3)	2312 (39.2)	3138 (45.9)	2646 (40.6)	3983 (42.5)	<0.001
<i>Active</i>	797 (11.6)	1060 (13.5)	720 (12.2)	797 (11.6)	841 (12.9)	1242 (13.3)	
<b>Aspirin use</b>	3917 (57.2)	3925 (50.0)	2971 (50.4)	3917 (57.2)	3278 (50.2)	4772 (51.0)	<0.001
<b>Statin use</b>	3372 (49.3)	3402 (43.3)	2491 (42.2)	3372 (49.3)	2807 (43.0)	4080 (43.6)	<0.001
<b>Cardiovascular disease</b>	1693 (24.7)	1621 (20.6)	1070 (18.1)	1693 (24.7)	966 (14.8)	1877 (20.1)	<0.001
<b>Chronic kidney disease</b>	1758 (25.7)	2054 (26.2)	1541 (26.1)	1758 (25.7)	1582 (24.2)	2646 (28.3)	<0.001
<b>Myocardial infarction</b>	606 (8.9)	578 (7.4)	370 (6.3)	606 (8.9)	339 (5.2)	666 (7.1)	<0.001
<b>Coronary revascularization</b>	806 (11.8)	753 (9.6)	457 (7.8)	806 (11.8)	431 (6.6)	878 (9.4)	<0.001
<b>Peripheral vascular disease</b>	414 (6.0)	415 (5.3)	296 (5.0)	414 (6.0)	304 (4.7)	503 (5.4)	0.001
<b>Carotid artery disease</b>	271 (4.0)	253 (3.2)	160 (2.7)	271 (4.0)	154 (2.4)	298 (3.2)	<0.001
<b>Framingham risk score</b>	17.3 (2.5)	17.4 (2.5)	17.3 (2.5)	17.3 (2.5)	17.4 (2.5)	17.4 (2.5)	0.868
<b>Atrial fibrillation</b>	566 (8.3)	611 (7.8)	503 (8.5)	566 (8.3)	490 (7.5)	754 (8.1)	0.298
<b>Congestive heart failure</b>	252 (3.7)	274 (3.5)	212 (3.6)	252 (3.7)	209 (3.2)	326 (3.5)	0.677
<b>Family history</b>	4247 (62.1)	4903 (62.4)	3723 (63.1)	4247 (62.1)	3994 (61.2)	6028 (64.4)	0.001
<b>SBP (mmHg)</b>	139.6 (15.7)	139.6 (15.5)	139.7 (15.6)	139.6 (15.7)	139.8 (15.5)	139.7 (15.6)	0.968
<b>DBP (mmHg)</b>	77.8 (11.9)	78.2 (11.9)	78.3 (11.9)	77.8 (11.9)	78.6 (11.8)	78.1 (11.9)	0.001
<b>Resting heart rate (bpm)</b>	65.9 (11.5)	66.4 (11.6)	66.3 (11.5)	65.9 (11.5)	66.4 (11.6)	66.3 (11.6)	0.019
<b>Total cholesterol (mg/dL)</b>	188.2 (41.1)	190.3 (41.2)	191.2 (40.6)	188.2 (41.1)	190.5 (40.0)	190.1 (41.1)	<0.001
<b>HDL (mg/dL)</b>	52.6 (14.0)	53.0 (14.5)	53.2 (14.6)	52.6 (14.0)	52.8 (14.1)	52.9 (14.4)	0.054
<b>LDL (mg/dL)</b>	111.1 (34.9)	112.6 (35.1)	113.5 (34.8)	111.1 (34.9)	113.2 (34.1)	112.6 (35.1)	<0.001
<b>eGFR (mL/min/1.73m<sup>2</sup>)</b>	72.5 (20.3)	72.6 (20.3)	72.5 (20.4)	72.5 (20.3)	73.3 (20.2)	71.8 (20.6)	0.001

BMI: body mass index; DBP: diastolic blood pressure; eGFR: estimated glomerular filtration rate; HDL: High-density lipoprotein; LDL: Low-density lipoprotein; SBP: systolic blood pressure. Continuous variables are summarized as mean (standard deviation) or median [25<sup>th</sup>-75<sup>th</sup> percentile], categorical variables as counts (valid percentages).

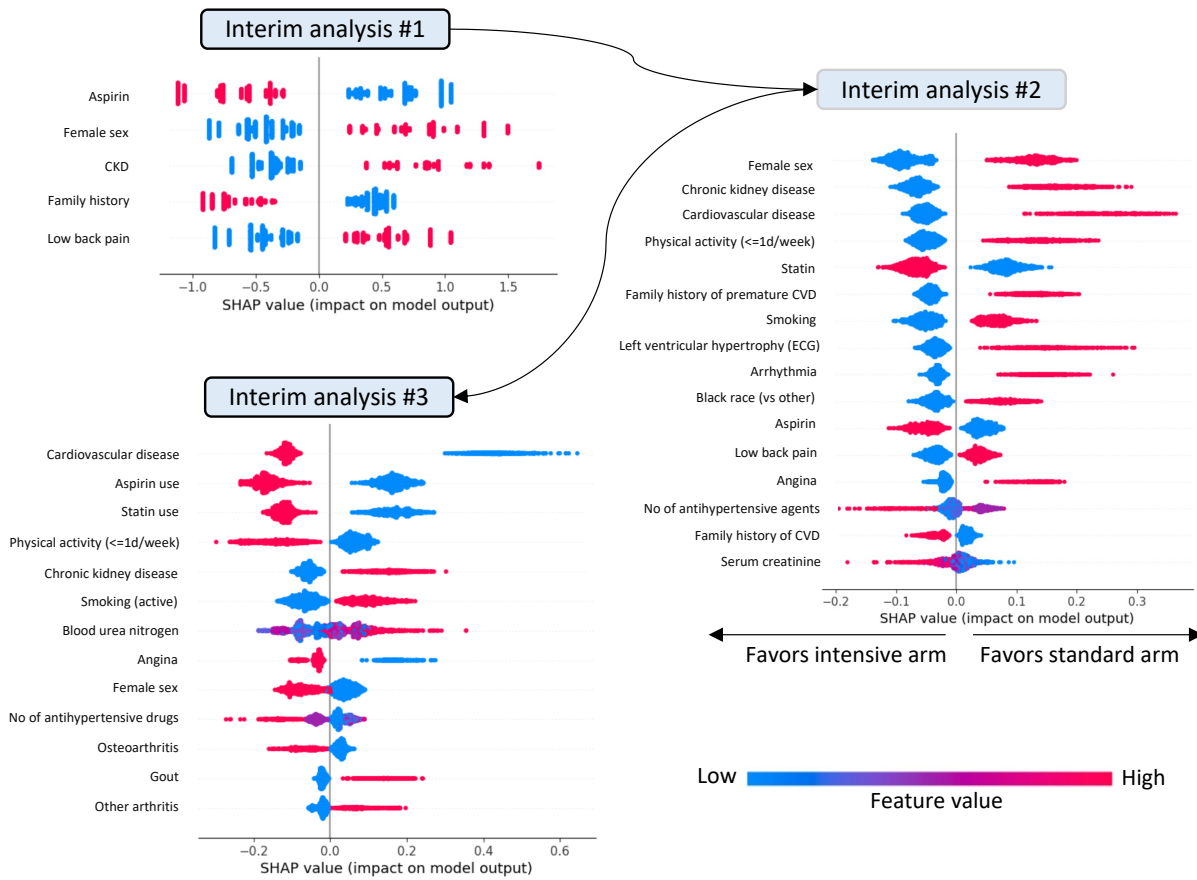
## Extended Data figures

### Example of model evolution during one simulation in IRIS

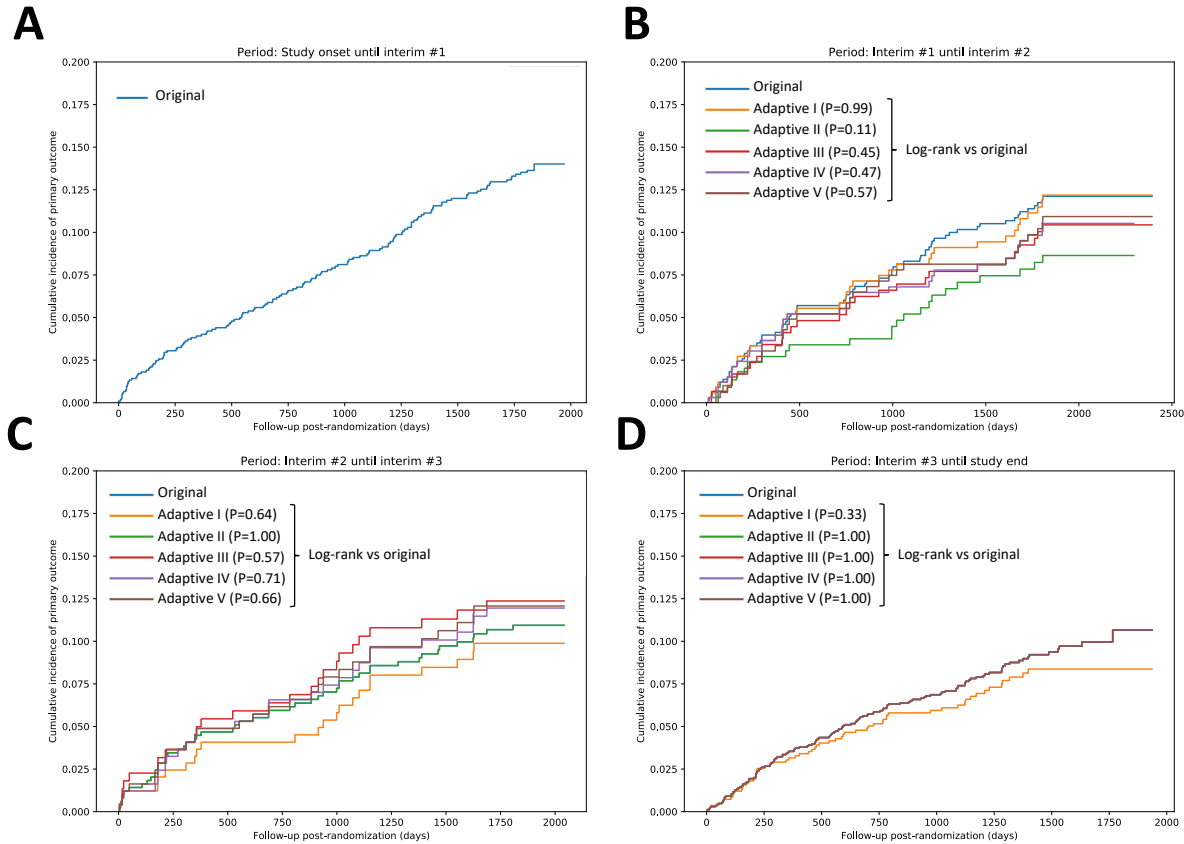


**Extended Data Fig. S1 | Example of model evolution for prediction of the personalized cardiovascular benefit of pioglitazone versus placebo across different enrollment periods.** The panels show the SHAP (Shapley additive explanations) plot summary for the final epoch model using the features identified as important by the Boruta method. Negative SHAP values favor the intensive systolic blood pressure reduction. IRIS: Insulin Resistance Intervention after Stroke.

Example of model evolution during one simulation in SPRINT

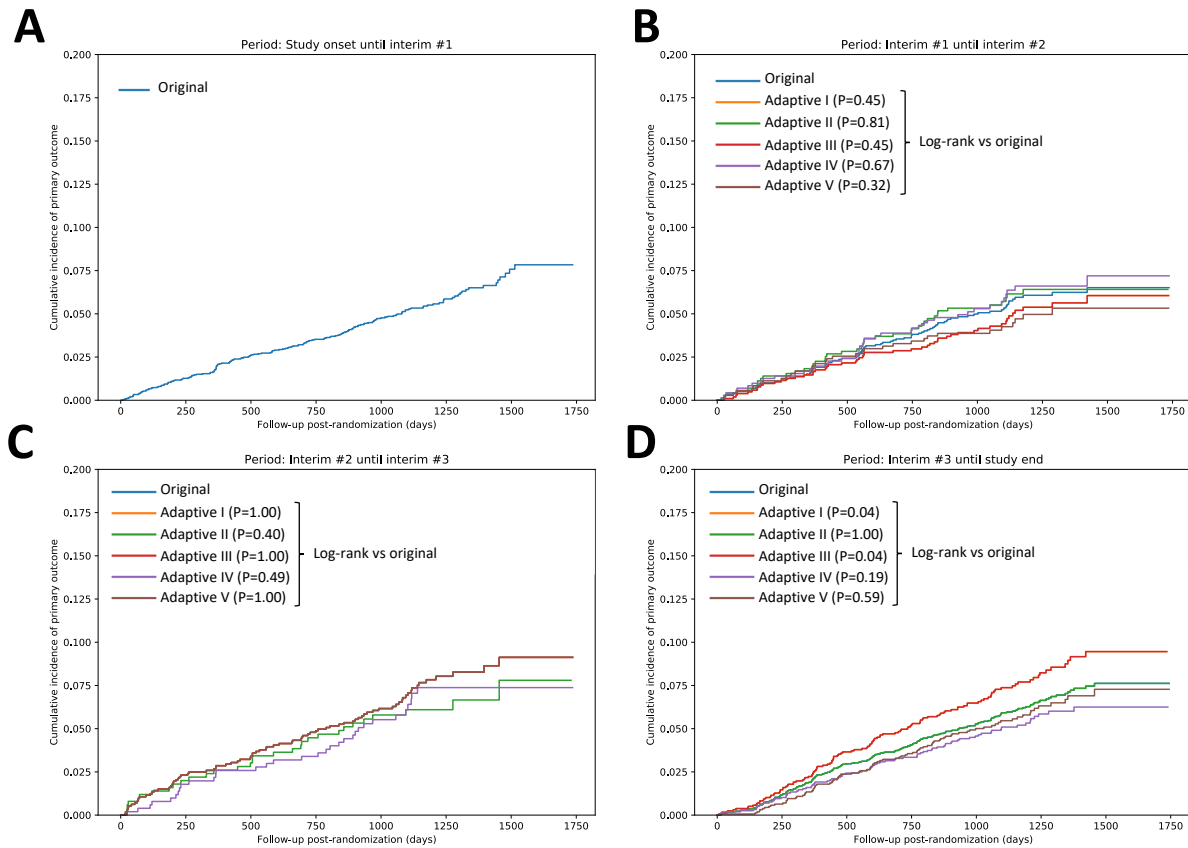


**Extended Data Fig. S2 | Example of model evolution for prediction of the personalized cardiovascular benefit of intensive versus standard systolic blood pressure reduction across different enrollment periods.** The panels show the SHAP (Shapley additive explanations) plot summary for the final epoch model using the features identified as important by the Boruta method. Negative SHAP values favor the intensive systolic blood pressure reduction. SPRINT: Systolic Blood Pressure Intervention Trial.



**Extended Data Fig. S3 | Incidence of the primary outcome across different enrollment periods in IRIS.** Incidence of the primary outcome among patients recruited: **(A)** prior to the first interim analysis, **(B)** between the first and second interim timepoints, **(C)** second and third timepoints, and **(D)** after the third interim analysis timepoint. Each analysis includes distinct curves for each one of the adaptive simulations. Here,  $p$ -values are derived from paired log-rank comparisons with the original trial survival curve. IRIS: Insulin Resistance Intervention after Stroke.





**Extended Data Fig. S4 | Incidence of the primary outcome across different enrollment periods in SPRINT.** Incidence of the primary outcome among patients recruited: (A) prior to the first interim analysis, (B) between the first and second interim timepoints, (C) second and third timepoints, and (D) after the third interim analysis timepoint. Each analysis includes distinct curves for each one of the adaptive simulations. Here,  $p$ -values are derived from paired log-rank comparisons with the original trial survival curve. SPRINT: Systolic Blood Pressure Intervention Trial.