

Table S1. Linear mixed effects regression models to identify the effects of SARS-CoV-2 in pregnancy and other maternal and infant factors on length- and weight-for-age Z scores through 24 weeks of life with interaction terms

<i>Predictors</i>	Length-for-age Z score				Weight-for-age Z score			
	<i>Estimates</i>	<i>std. Error</i>	<i>CI</i>	<i>p</i>	<i>Estimates</i>	<i>std. Error</i>	<i>CI</i>	<i>p</i>
SARS-CoV-2 in pregnancy (Ref=Uninfected)								
Early infection	-1.75	0.46	-2.66 – -0.85	<0.001	-0.18	0.41	-0.98 – 0.62	0.661
Late infection	0.56	0.50	-0.42 – 1.55	0.263	1.02	0.43	0.17 – 1.87	0.019
Infant age (weeks)	0.00	0.01	-0.02 – 0.02	0.761	-0.00	0.00	-0.01 – 0.01	0.861
Placental malaria	-0.41	0.43	-1.27 – 0.44	0.344	-0.32	0.41	-1.12 – 0.49	0.440
Gravidity	-0.22	0.10	-0.42 – -0.02	0.035	-0.14	0.10	-0.33 – 0.05	0.148
Mother achieved \geq O level education	0.41	0.28	-0.13 – 0.96	0.135	0.26	0.26	-0.25 – 0.77	0.312
BMI of mother at enrollment	0.07	0.03	0.01 – 0.13	0.033	0.13	0.03	0.07 – 0.19	<0.001
Infant sex (female)	0.39	0.27	-0.14 – 0.92	0.145	0.08	0.25	-0.42 – 0.57	0.759
Infant birth length (cm)	0.13	0.05	0.02 – 0.23	0.019	0.11	0.05	0.01 – 0.21	0.026
Interaction terms:								
Early infection x Infant age	0.03	0.01	0.00 – 0.05	0.029	-0.01	0.01	-0.02 – 0.00	0.067
Late infection x Infant age	-0.02	0.02	-0.05 – 0.01	0.229	-0.02	0.01	-0.03 – -0.01	0.007
Early infection x Placental malaria	0.72	0.59	-0.43 – 1.87	0.219	-0.30	0.55	-1.39 – 0.78	0.586
Late infection x Placental malaria	-1.18	0.64	-2.44 – 0.08	0.066	-1.14	0.60	-2.31 – 0.03	0.056

Length- and weight-for age Z scores defined using WHO Child Growth standards. SARS-CoV-2 infection during early pregnancy defined as IgM positive at enrollment in second trimester. SARS-CoV-2 infection during late pregnancy defined as seronegative in second trimester and seropositive at delivery. BMI=body mass index.

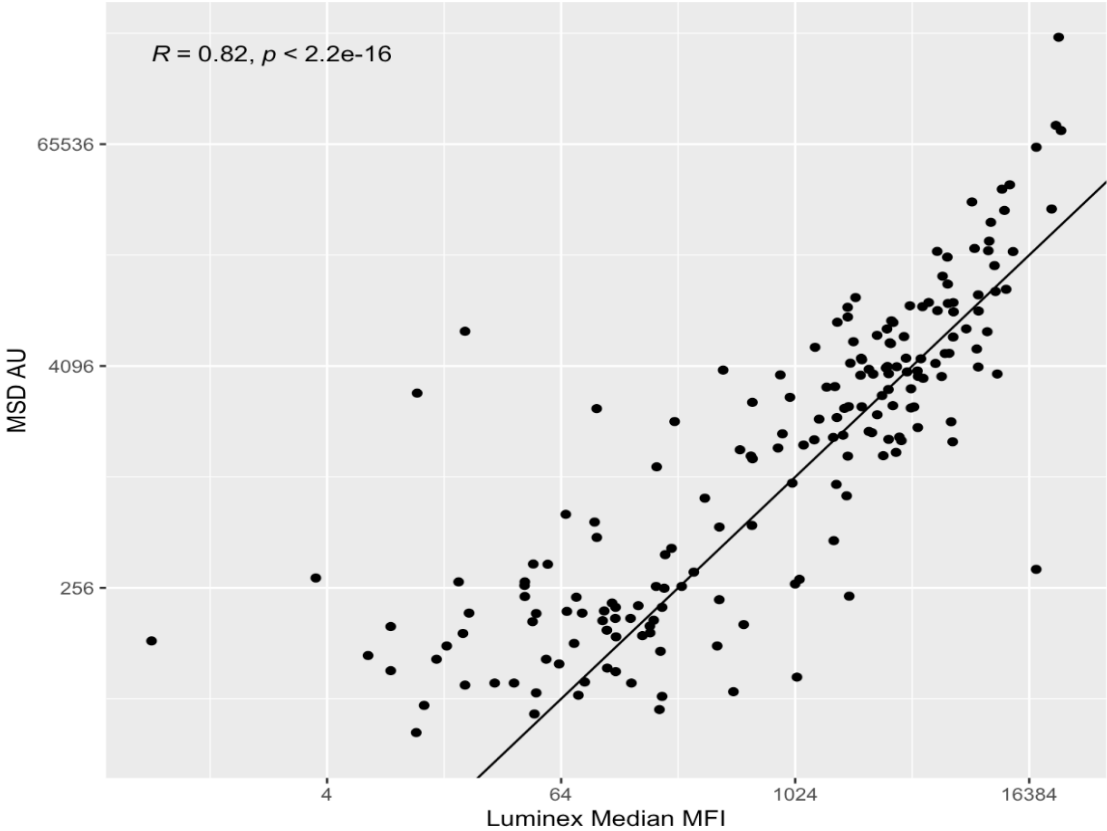
Table S2. Birth and infant outcomes by variant of exposure

	Alpha (N=31)	Delta (N=48)	Total (N=79)	p value
Spontaneous abortion	1 (3.2%)	1 (2.1%)	2 (2.5%)	0.752
Stillbirth	0 (0.0%)	1 (2.1%)	1 (1.3%)	0.421
Preterm birth	4 (13.3%)	2 (4.3%)	6 (7.9%)	0.156
Low Birth Weight	1 (3.3%)	3 (6.5%)	4 (5.3%)	0.543
Small for gestational age	4 (13.3%)	6 (13.0%)	10 (13.2%)	0.971
Mother's WBC at delivery (cells/ μ l)	10840 (8935, 13835)	11350 (9110, 13050)	11200 (9013, 13398)	0.713
Female gender	12 (40.0%)	22 (46.8%)	34 (44.2%)	0.557
Birth Weight (g)	3080 (2945, 3325)	2950 (2800, 3268)	3000 (2800, 3280)	0.310
Birth length (cm)	47 (46, 48)	47 (44-48)	47 (45-48)	0.482
Placental malaria	9 (36.0%)	14 (37.8%)	23 (37.1%)	0.883
Height at 12 weeks (cm)	59 (58-60)	56 (55-59)	58 (55-59)	0.037
Weight at 12 weeks (kg)	5.69 (5.40, 6.76)	5.53 (5.00, 6.02)	5.55 (5.28, 6.14)	0.088
Length-for-age Z score at 12 weeks	-0.42 (-1.34, -0.13)	-2.01 (-2.88, -0.47)	-1.34 (-2.31, -0.360)	0.037
Weight-for-age Z score at 12 weeks	-0.35 (-0.72, 0.73)	-0.42 (-1.28, -0.05)	-0.39 (-1.02, 0.10)	0.159
Stunting at 12 weeks	1 (9.1%)	11 (52.4%)	12 (37.5%)	0.016
Underweight at 12 weeks	0 (0.0%)	2 (9.5%)	2 (6.2%)	0.290

IQR=Interquartile range. Length- and Weight-for-age Z scores determined from WHO reference

standards. P values are reported for chi-square tests of proportions for categorical variables [displayed as n (%)], and Mann-Whitney U tests for continuous variables [displayed as median, (IQR)].

Figure S1. Comparison of Spike antibody levels as measured by Luminex vs MSD



Correlation of Luminex SARS-CoV-2 Spike IgG median MFI with SARS-CoV-2 Wuhan-Hu-1 Spike IgG AU as measured on MSD platform.