

1 **Title:** RNA sequencing identifies human placental *IL3RA* as a potential predictor of adverse
2 cardiovascular outcomes in patients with severe preeclampsia

3 **Authors:** Omonigho Aisagbonhi, MD., Ph.D.^{1,2*} Tony Bui, BS.¹⁻³, Hailee St. Louis, MD¹.,
4 Donald Pizzo, Ph.D¹., Morgan Meads, BS.¹⁻³, Megan Mulholland, BS.¹⁻³, Robert Morey,
5 Ph.D^{1,3}., Celestine Magallanes, BS⁴, Leah Lamale-Smith, MD⁴, Louise C. Laurent, MD, Ph.D⁴.,
6 Marni B. Jacobs, Ph.D.^{2,4}, Kathleen M. Fisch, Ph.D.²⁻⁵ and Mariko Horii, MD¹⁻³

7 **Affiliations:**

- 8 1. Department of Pathology, University of California, San Diego, La Jolla, California, USA
- 9 2. Center for Perinatal Discovery, University of California, San Diego, La Jolla, California,
10 USA
- 11 3. Sanford Consortium for Regenerative Medicine, University of California, San Diego, La
12 Jolla, California, USA
- 13 4. Department of Obstetrics, Gynecology and Reproductive Sciences, University of
14 California, San Diego, La Jolla, California, USA
- 15 5. Center for Computational Biology and Bioinformatics, University of California, San
16 Diego, La Jolla, California, USA

17 *Corresponding author:

18 Address: 9444 Medical Center Drive (1-200) La Jolla, CA 92037

19 E-mail: oisagbonhi@health.ucsd.edu

20 Phone: 858-657-5464

21 Fax: 858-657-5495

22 **Short title:** *IL3RA* may predict adverse preeclampsia outcomes

23 **Word count:** 8216

24 **Abstract**

25 **Background:** Mortality from preeclampsia (PE) and PE-associated morbidities are 3-to 5-fold
26 higher in persons of African ancestry than in those of Asian and European ancestries. The
27 placenta is central to the etiology of PE. However, how and to what extent the placenta
28 contributes to worse PE outcomes in persons of African ancestry is yet to be fully elucidated.

29 **Objective:** We aimed to identify molecular pathways that are unique or enriched in placentas of
30 parturient persons of African ancestry with PE with severe features (sPE) compared to those of
31 Asian and European ancestry with sPE.

32 **Study design:** Bulk RNA sequencing was performed on 50 placentas from parturient persons
33 with sPE of African (n=9), Asian (n=18) and European (n=23) ancestries and 73 normotensive
34 controls of African (n=9), Asian (n=15) and European (n=49) ancestries.

35 **Results:** Metabolism, hormone regulation and hypoxia/angiogenesis genes, previously described
36 to be upregulated in PE, including: *LEP*, *PAPPA2*, *INHA*, *FSTL3*, *FLT1*, *PHYHIP* and *ENG*,
37 were upregulated in sPE across ancestries, with high expression of *FSTL3* being additionally
38 associated with intrauterine growth restriction ($p = .0047$). Notably, the upregulation of, *FLT1*,
39 *LEP* and *PHYHIP* was significantly higher in sPE placentas from parturient persons of African
40 versus Asian ancestry ($p = .035$, $.020$ and $.012$ respectively). Genes associated with allograft
41 rejection and adaptive immune response were upregulated in placentas from parturients of
42 African ancestry but not in those of Asian and European ancestries. Among the allograft
43 rejection/adaptive immune response genes, *IL3RA* was of particular interest because the patient
44 with the highest placental *IL3RA* level, a woman of African ancestry with *IL3RA* levels 4.5-fold
45 above the average for African ancestry parturients with sPE, developed postpartum
46 cardiomyopathy, and was the only patient out of 123, that developed this condition. Interestingly,

47 the sPE patients with the highest *IL3RA* levels among parturients of Asian and European
48 ancestries developed unexplained tachycardia peripartum, necessitating echocardiography in the
49 European ancestry patient. The association between elevated placental *IL3RA* levels and
50 unexplained tachycardia or peripartum cardiomyopathy was found to be significant in the 50 sPE
51 patients ($p = .0005$).

52 **Conclusions:** Placentas from parturients of African ancestry express higher levels of metabolism
53 (*LEP*) and hypoxia/angiogenesis (*FLT1*) genes, as well as allograft rejection/adaptive immune
54 response genes, including *IL3RA*. High placental expression of *IL3RA* may predict worse
55 maternal cardiovascular outcomes, including peripartum cardiomyopathy. Studies evaluating
56 placental *IL3RA* levels in peripartum cardiomyopathy cohorts are therefore warranted, as are
57 broader studies evaluating placental factors in maternal cardiovascular outcomes postpartum.

58

59 **Introduction**

60 Preeclampsia (PE) is a hypertensive disorder of pregnancy (HDP) that the WHO lists as one of
61 the 5 major causes of maternal mortality worldwide¹. Pregnant and parturient persons of African
62 ancestry have 1.5 to 2.5-times higher rates of PE²⁻⁵ and are 3 to 5-times more likely to die of PE
63 than pregnant and parturient persons of Asian or European ancestry⁶⁻⁷. PE-associated
64 morbidities, such as, stroke, pulmonary edema and heart failure, are also significantly higher in
65 pregnant and parturient persons of African ancestry⁶⁻⁷.

66 Underlying comorbidities and lower socioeconomic status (SES) do not entirely explain the
67 higher PE rates and worse prognosis in persons of African ancestry. A population-based study of
68 718,604 Black and White pregnant and parturient persons from a California cohort of singleton
69 births found that, although White persons of higher SES had a lower risk of PE than White

70 persons of lower SES, higher SES did not attenuate PE risk in Black persons⁸. A review of the
71 records of 1,355 pregnant persons with HDP found similar rates of underlying chronic
72 hypertension in Black and White pregnant persons. However, among pregnant persons with HDP
73 without underlying chronic hypertension, Black persons were significantly more likely to be
74 diagnosed with PE than White persons⁹. In their retrospective cohort study of California births in
75 2007, Snowden et al¹⁰ found that though obesity was a risk factor for PE and low birth weight in
76 White pregnant persons, obesity did not confer significantly increased PE risk in Black persons.
77 However, Black pregnant persons of normal weight had a higher risk of PE than White persons
78 of normal weight.

79 The placenta plays a central role in the pathology of PE, as PE only occurs in the context of
80 pregnancy, and delivery of the placenta is often curative¹¹⁻¹³. However, how the placenta
81 contributes to worse PE outcomes in pregnant and parturient persons of African ancestry, and
82 which specific placental injury pathways may be dysregulated in this population (and therefore
83 potential targets for therapy), are not well studied.

84
85 Molecular and clinical data point to multiple pathways leading to PE. Using unsupervised
86 clustering of aggregate microarray datasets (first in 173 patient samples, including 77 with PE
87 and 96 controls, and later in a larger dataset of 330 samples, including 157 PE and 173 non-PE
88 samples), Leavey et al¹⁴⁻¹⁵ identified 3 molecular clusters/subclasses of PE which they termed
89 maternal, canonical and immunologic. In the maternal PE group, infant birthweight and placental
90 weight were appropriate for gestational age, and placental histology and gene expression patterns
91 were not significantly different from normotensive controls. In the canonical PE group,
92 birthweight and placental weight were small for gestational age, placental histology showed

93 evidence of maternal vascular malperfusion, and genes associated with hormone regulation and
94 angiogenesis were overexpressed, with *FSTL3* identified as the top differentially expressed gene.
95 In the immunologic PE group, birthweight and placental weight were small for gestational age,
96 placental histology showed massive/increased perivillous fibrin deposition, and genes associated
97 with immune and inflammatory responses were overexpressed.

98
99 Recently, our group performed RNA sequencing on placentas from PE patients with evidence of
100 maternal vascular malperfusion and found trophoblast defects and activation of pathways
101 associated with hypoxia, inflammation and reduced cell proliferation in placentas with maternal
102 vascular malperfusion¹⁶, thus demonstrating that placental tissue RNA sequencing reflects
103 pathways associated with histologic evidence of placental injury in PE.

104 Therefore, we sought to elucidate the cellular and molecular underpinnings of the worse PE
105 outcomes in pregnant and parturient persons of African ancestry by performing bulk RNA
106 sequencing on placentas from persons affected by PE with severe features (sPE) and
107 normotensive controls of African ancestry compared to persons of Asian and European
108 ancestries. We hypothesized that molecular PE subclasses differ in placentas from parturient
109 persons of African ancestry versus those of Asian and European ancestries.

110

111 **Materials and Methods**

112 *Study cohort selection*

113 The study was approved by University of California, San Diego (UCSD) institutional review
114 board, approval #181917. The study specimens were obtained from 2655 singleton parturitions at
115 UCSD-affiliated hospitals between January 2010 and November 2020. The patients whose

116 samples were collected gave written informed consent for accessing their electronic medical
117 records and collection of placental tissue. Demographic, clinical and placenta histology data
118 were collected in a REDCap-based obstetric registry. For each pregnancy, the clinical diagnosis
119 of preeclampsia with severe features (sPE) was adjudicated by 2 Board-Certified obstetricians.
120 Of the 2655 parturitions, 1003 for which the maternal ethnicity was recorded as Hispanic-other
121 were excluded, because Hispanic is a language group that can include people of diverse
122 ancestries, ranging from African (e.g. Afro-Cubans) to North and South Americans (e.g.
123 Mexicans and Brazilians), Asians (e.g. Spanish Filipinos) and Europeans (e.g. Spaniards).
124 Categorization as Hispanic-other thus provided insufficient information about ancestry and had
125 the potential to confound the study. 4 American Indian, 18 Native Hawaiian and 3 self-identified
126 multiracial without further ancestry delineation were excluded because the numbers of patients in
127 these categories were too few to gather generalizable information. There remained 142
128 parturitions with maternal African ancestry (self-identified as Black, African or African
129 American), 265 with Asian ancestry (self-identified as Asian) and 1220 with European ancestry
130 (self-identified as White, including Hispanic and non-Hispanic). Of these, RNA sequencing was
131 performed on 9 sPE and 9 normotensive controls of African ancestry, 18 sPE and 15
132 normotensive controls of Asian ancestry and 23 sPE and 49 normotensive controls of European
133 ancestry (Figure 1).

134 *Obstetric Data*

135 The demographic data collected included maternal ancestry, maternal age at delivery, gravidity,
136 parity, gestational age at delivery, fetal sex, birth weight, mode of delivery, documented sPE,
137 intrauterine growth restriction (IUGR), unexplained tachycardia, or peripartum cardiomyopathy.

138 *RNA isolation from placental tissue, bulk RNA sequencing and analysis*

139 Placenta disc villous tissue (avoiding the chorionic and basal plates) was collected and stored in
140 RNAlater (ThermoFisher). Total RNA was isolated from RNAlater-preserved specimens with
141 the mirVana RNA isolation kit using the manufacturer's Total RNA protocol (ThermoFisher)
142 and RNA concentration was measured using the QuBit RNA BR assay kit (ThermoFisher). RNA
143 integrity was evaluated using RNA 6000 Nano chip read by a 2100 Bioanalyzer (Agilent). All
144 samples had an RNA integrity number of >7.0. RNA sequencing libraries were prepared using
145 the TruSeq Stranded Total RNA Sample preparation kit with Ribo-Zero Gold (Illumina) at the
146 IGM Genomics Center, UCSD. The libraries were pooled and sequenced on the NovaSeq 6000
147 (Illumina) with PE100 to an average depth of 25,000,000 uniquely mapped reads. Quality control
148 was performed using FastQC (version 0.11.3). Reads were mapped to GRCh38.89 (Ensembl)
149 using STAR (version 2.7.9a)¹⁷ on the Extreme Science and Engineering Discovery Environment
150 (XSEDE)¹⁸. The STAR parameters used were as follows: `--runThreadN 24 --sjdbOverhang 99 --`
151 `genomeDir ref_ensembl_GRCh38_89/star_index --sjdbGTFtagExonParentGene gene_id --`
152 `sjdbGTFfile ref_ensembl_GRCh38_89/Homo_sapiens.GRCh38.89.gtf --outSAMtype BAM`
153 `Unsorted SortedByCoordinate --outReadsUnmapped Fastx --quantMode Gene-Counts`. Ensembl
154 genes with at least 10 counts in 25% of the samples were filtered for the analysis. Normalization
155 and the differential expression analysis (DEA) were performed using the R (version 4.2.1)
156 package DESeq2 (version 1.36.0)¹⁹. Data were accounted for batch effect, gestational age, and
157 gender, and adjusted p-value < .05 was considered differentially expressed. BiomaRt (version
158 2.42.1) was used to convert Ensembl gene identification numbers to Human Genome
159 Organization gene names²⁰. Gene set enrichment analysis (GSEA) was performed using the R
160 (version 4.2.1) package Fast Gene Set Enrichment Analysis (version 1.22.0). Gene ontology

161 analysis was performed using Enrichr²¹. Pathway analysis was performed using MsigDB
162 Hallmark gene set pathway analysis²². Venn diagrams were constructed using BioVenn²³.

163 *Immunohistochemistry*

164 Formalin-fixed paraffin-embedded placental tissue sections of 5 µm were stained with mouse
165 anti-CD123 (clone BR4MS; 1:100; Ventana) antibody using a manual staining method. Briefly,
166 slides were incubated at 60°C for 1 hour, deparaffinized through standard xylene and alcohol
167 changes and hydrated in distilled water. Slides were pretreated in BioCare BORG decloaking
168 chamber at 125°C, 123psi. Slides were rinsed in TBS (BioCare Medical), peroxidase block (3%
169 hydrogen peroxide) was applied for 10 mins, after which slides were rinsed in TBS. Protein
170 block with 0.5% casein (Vector) was performed for 10 mins, after which slides were rinsed in
171 TBS and then incubated with the CD123 antibody for 30 mins, rinsed in TBS and incubated in
172 post-primary reagent (rabbit anti-mouse Ig; Nvocastra) for 30 mins. Slides were again rinsed in
173 TBS and then Novolink polymer (HRP-polymer-goat-anti-rabbit IG; Leica microsystems) was
174 applied for 30 mins. Slides were rinsed in TBS and then DAB reagent (DAKO) was applied.
175 Slides were rinsed in water, counterstained with hematoxylin, dehydrated, cleared with xylene
176 and then coverslip applied, per standard protocols. Immunohistochemistry was performed at San
177 Diego Pathologist Medical Group.

178 *Immunohistochemistry quantification*

179 CD123-stained placenta sections were evaluated to by a pathologist; cellular localization was
180 evaluated and scores were assigned based on intensity (no staining = 0, weak staining = 1,
181 moderate staining = 2 and strong staining = 3) and amount of staining (none = 0, focal = 1,
182 patchy = 2 and diffuse = 3). The total score comprised the sum of the intensity and amount
183 scores (lowest = 0 and highest = 6).

184 *Peripartum cardiomyopathy sub-study*

185 Electronic medical records of the 2655 singleton pregnancies with adjudicated diagnosis
186 (described in the study cohort section above) were searched using the term “cardiomyopathy”
187 and 4 patients with bona fide peripartum cardiomyopathy (PPCM) in the index pregnancy were
188 identified (Figure 6A).

189 *Statistical analysis*

190 Statistical analyses were performed using GraphPad Prism (version 9.4.1). The Mann-Whitney U
191 test was applied to all nonparametric data and student t test to all parametric data with continuous
192 variables. The Pearson chi-square test was used for categorical variables. All statistical tests were
193 2-sided, with values $<.05$ considered statistically significant.

194

195 **Results**

196 *Histopathologic analysis cohort*

197 The histopathologic analysis cohort was comprised of 868 patients; 127 with sPE and 741
198 normotensive controls. Maternal age, gestational age at delivery, gravidity, parity, infant sex,
199 infant birth weight and mode of delivery were evaluated in sPE patients African (n=15), Asian
200 (n=23) and European (n=89) ancestries compared to normotensive controls of African (n=39),
201 Asian (n=114) and European (n=588) ancestries. Gestational age at delivery and birth weight
202 were significantly less in sPE patients than in normotensive controls across ancestries
203 (Supplemental Table 1).

204

205 *In patients with severe preeclampsia, African ancestry is associated with higher rates of*
206 *maternal vascular malperfusion and perivillous fibrin deposition*

207 We analyzed the 868 placentas using previously defined histopathologic criteria²⁴⁻²⁵. We found
208 maternal vascular malperfusion and perivillous fibrin deposition occurred at significantly higher
209 rates in placentas from parturients of African ancestry with sPE compared to those of Asian or
210 European ancestry, suggesting worse placental injury in the African ancestry sPE group
211 (Supplemental Table 2).

212

213 *RNA sequencing patient demographics*

214 Maternal age, gestational age at delivery, gravidity, parity, infant sex, infant birth weight and
215 mode of delivery were evaluated in sPE versus normotensive control patients of African, Asian
216 and European ancestries whose placenta samples were RNA sequenced. In comparison to
217 normotensive controls, infant birth weight was significantly lower in sPE parturitions across
218 ancestries while gestational age at delivery, gravidity and parity were significantly less in
219 African ancestry sPE parturitions (Supplemental Table 3).

220 Among the sPE patients, there was no significant difference in evaluated demographics –
221 maternal age, gestational age at delivery, gravidity, parity, infant sex, birth weight and mode of
222 delivery – across ancestries (Supplemental Table 4).

223

224 *Canonical preeclampsia genes and pathways are upregulated in placentas from patients of all* 225 *ancestries with sPE*

226 We first performed differential expression analysis of sPE vs. normotensive controls within each
227 ancestry, and found 146 genes upregulated in African-sPE, 129 genes in Asian-sPE, and 637
228 genes in European-sPE placentas. 54 genes were upregulated in common in sPE placentas of all
229 3 ancestries (Figure 2A; Supplemental Tables 5-7). The relatively small number of differentially

230 expressed genes did not show enrichment of ontology terms using hypergeometric statistical
231 tests. We therefore used our ranked gene list to perform gene set enrichment analysis (GSEA) to
232 look for enriched pathways in our dataset. The leading edge analysis identified the most highly
233 upregulated genes and pathways including those involved in metabolism (*LEP*, *HK2*), hormone
234 regulation (*INHA*, *PAPPA2*), and hypoxia/angiogenesis (*FLT1*, *FSTL3*, *ENG*, *HTRA4*), which
235 have been previously reported to be upregulated in PE^{14-15, 26-32} (Figure 2B-C; Supplemental
236 Tables 8-10). Based on review of prior publications showing evidence of associations with
237 preeclampsia, 9 of the leading edge genes we identified as upregulated in sPE patients across all
238 ancestries were chosen for further analyses (bolded in Figure 2A, arrows in Figure 2C).

239
240 *African ancestry is associated with higher upregulation of PHYHIP and the canonical PE genes,*
241 *FLT1 and LEP*

242 In evaluating the 9 selected genes upregulated in placentas of sPE patients vs. normotensive
243 controls of all ancestries, we noticed African ancestry sPE placentas showed higher fold-change
244 compared to fold-change from other ancestry groups (Table 1).

245 Therefore, we further investigated which of the 9 genes were specifically upregulated in sPE
246 placentas of African ancestry versus sPE placentas of Asian and European ancestries (excluding
247 normotensive controls). We found *FLT1*, *LEP* and *PHYHIP* were more highly upregulated in
248 placentas from African ancestry sPE patients (Figure 3A; Supplemental Figure 1).

249
250 *High placental upregulation of FSTL3 is associated with intrauterine growth restriction*

251 We reviewed electronic medical records of all 123 study patients for intrauterine growth
252 restriction (IUGR), a known PE-associated pregnancy complication. IUGR was present in 28 of

253 123 patients (6 of 9 sPE African ancestry, 8 of 18 sPE Asian ancestry, 11 of 23 sPE European
254 ancestry, 0 of 9 normotensive African, 0 of 15 normotensive Asian and 3 of 49 normotensive
255 European patients). We evaluated IUGR in relation with DESeq2 normalized gene expression
256 levels of our 9 selected genes. We found that all 9 genes were significantly associated with
257 IUGR when sPE and normotensive IUGR patients were combined. However, only *FSTL3*, *FLT1*,
258 *ENG* and *HTRA4* were associated with IUGR independently of preeclampsia; with *FSTL3* being
259 the most highly upregulated gene (15.4-fold) in normotensive patients with IUGR (Figure 3B;
260 Supplemental Figure 2).

261

262 *Allograft rejection and adaptive immune response genes and pathways are selectively*
263 *upregulated in placentas from patients of African ancestry with sPE*

264 In comparison to placentas from normotensive patients, 26 genes and 7 pathways were uniquely
265 upregulated in placentas from sPE patients of African ancestry and not in Asian or European
266 ancestry sPE placentas (Figure 4A-B). Allograft rejection and adaptive immune response
267 (interleukin-JAK-STAT signaling) pathways were among those uniquely upregulated in
268 placentas from African ancestry sPE patients. Interestingly, leading edge gene analysis identified
269 interleukin receptor, *IL3RA*, which is known for allograft rejection through interleukin
270 signaling³³⁻³⁵, to be selectively upregulated in placentas of sPE patients of African ancestry.
271 Therefore, *IL3RA* was chosen for further investigation in our study. We performed regression
272 analysis of *IL3RA* levels in placentas of sPE patients of African, Asian and European ancestries
273 delivered at various gestational ages and found *IL3RA* levels to be elevated in African ancestry
274 sPE placentas, regardless of gestational age at delivery (Supplemental Figure 3A). In African
275 ancestry parturients, individual placentas showed upregulation of both canonical (exemplified by

276 *FLT1* and *LEP*) and allograft rejection/adaptive immune response genes (exemplified by *IL3RA*)
277 (Supplemental Figure 3B).

278

279 *High placental upregulation of IL3RA is associated with unexplained tachycardia and*
280 *peripartum cardiomyopathy*

281 We performed a detailed review of the electronic medical records of the sPE patients with the
282 highest placental *IL3RA* expression levels for their ancestry and found they developed either
283 peripartum cardiomyopathy (PPCM; African ancestry) or unexplained tachycardia (UET; Asian
284 and European ancestries) (Table 2; Figure 4C). Tachycardia in the absence of clinically
285 explained causes such as chorioamnionitis, urinary tract infection, viral infection, post-partum
286 hemorrhage/anemia, dehydration, sleep apnea and bulimia was classified as UET.

287 We thus searched for UET and PPCM in the medical records of all 50 sPE study patients and
288 found elevated *IL3RA* levels to be significantly associated with UET or PPCM (Fisher's exact
289 test p value .0005) (Table 3).

290

291 *Placental syncytiotrophoblast CD123 expression by immunohistochemistry correlates with*
292 *placental IL3RA levels by RNA-seq*

293 We evaluated the localization and expression pattern of CD123, the protein product of *IL3RA* by
294 immunohistochemistry on formalin-fixed paraffin-embedded (FFPE) sections from sPE patient
295 placentas with the highest and lowest placental *IL3RA* levels for their ancestry (i.e. the 2 highest
296 and 2 lowest *IL3RA*-expressing sPE placentas of each ancestry; N =12). There was variable
297 CD123 expression in chorionic plate vessel endothelial cells, stem villous vessel endothelial
298 cells, decidual vessel endothelial cells and syncytiotrophoblasts (Figure 5A-D). CD123

299 expression in syncytiotrophoblasts correlated with *IL3RA* levels (simple linear regression $p =$
300 $.0027$), but expression in stem villous vessels did not ($p = .1782$) (Figure 5E-F).

301
302 *Placental syncytiotrophoblast CD123 expression was detectable in only one of four peripartum*
303 *cardiomyopathy patients*

304 We reviewed our database of 2655 singleton parturitions to identify patients who developed
305 peripartum cardiomyopathy (Figure 6A; Table 4).

306 We subsequently evaluated placental CD123 expression in the 4 PPCM patients by
307 immunohistochemistry on FFPE tissue sections. Syncytiotrophoblast CD123 expression was
308 present only in the African ancestry PPCM patient (Figure 6B-E).

309

310 **Discussion**

311 Factors underlying increased PE risk and worse PE outcomes in African ancestry pregnancies
312 and parturitions are incompletely understood. In the current study, we evaluated placental gene
313 expression by RNA sequencing in patients with sPE of African, Asian and European ancestries
314 and found upregulation of canonical PE genes in sPE patients of all ancestries, with follistatin-
315 like 3 (*FSTL3*) being associated with IUGR. *FSTL3* is an activin antagonist that Mukherjee et al.
316 found to be involved in glucose and fat metabolism³⁶. In their unsupervised placental gene
317 expression profiling, Leavey et al¹⁴⁻¹⁵ found *FSTL3* to be the top gene associated with canonical
318 PE and IUGR. A 2021 study found elevated maternal serum levels of FSTL3 during pregnancy
319 to be predictive of fetal growth restriction³⁷. Our findings are in concordance with these studies.

320

321 Among the genes upregulated in PE across ancestries, we found higher expression of, Fms-
322 related receptor tyrosine kinase 1 (*FLT1*), leptin (*LEP*) and phatonyl-CoA 2-hydroxylase
323 interacting protein (*PHYHIP*) in African ancestry sPE placentas. *FLT1* is probably the most
324 widely recognized PE-associated gene, having been found to be upregulated in PE in multiple
325 studies^{26-28, 38}. The ratio of soluble FLT-1 (sFlt-1) to placental growth factor (PIGF) has been
326 validated as a test to predict impending PE³⁹. *LEP* plays a major role in the regulation of energy
327 homeostasis and body weight⁴⁰. Elevated *LEP* has been previously described in preeclampsia in
328 multiple studies and leptin infusion in mice induces clinical characteristics of preeclampsia²⁹⁻³¹.
329 Longitudinal measurement of leptin/ceramide ratio outperformed sFlt-1/PIGF ratio in predicting
330 impending PE³¹. *PHYHIP* has been described to be involved in protein localization and has been
331 suggested to be involved in the development of Refsum disease, a neurologic disorder caused by
332 the toxic accumulation of phytanic acid in brain and peripheral neurons⁴¹. A few studies have
333 identified *PHYHIP* as one of the placenta genes associated with early-onset preeclampsia⁴²⁻⁴³.
334 Higher upregulation of *FLT1*, *LEP* and *PHYHIP* in placentas from pregnancies and parturitions
335 of maternal African ancestry may partly explain worse PE outcomes in this patient population.
336
337 We found genes and pathways involved in allograft rejection and adaptive immune responses to
338 be selectively upregulated in placentas from parturient persons of African ancestry with sPE and
339 not in those of Asian and European ancestries. Notably, individual placentas from patients of
340 African ancestry with sPE had upregulation of both canonical PE genes and allograft
341 rejection/adaptive immune response genes. This raises the possibility that rather than being
342 indicative of distinct PE etiologies (i.e. canonical versus immunologic), activation of allograft

343 rejection/adaptive immune response genes may be a marker of worse placental injury and
344 harbinger of worse PE outcomes.

345

346 Among the allograft rejection and adaptive immune response genes, we found high placental
347 expression of interleukin 3 receptor alpha (*IL3RA*) to be associated with unexplained tachycardia
348 and peripartum cardiomyopathy in sPE patients. *IL3RA* is a cell surface receptor for IL3.
349 Binding of IL3 to *IL3RA* causes heterodimerization with the beta subunit, *IL3RB*, and
350 downstream JAK2-STAT5 signaling⁴⁴. IL5 and GM-CSF share the beta subunit with IL3 and can
351 activate signal transduction upon binding⁴⁵. High levels of IL3 and GM-CSF have been observed
352 in various models of heart failure. Vistnes et al.⁴⁶ found IL3 and GM-CSF among the cytokines
353 increased upon inducing heart failure in a mouse cardiomyopathy model. IL3 caused allograft
354 fibrosis and chronic rejection of mouse heart transplants³⁵. IL3 impaired the cardioprotective
355 effects of endothelial cell-derived extracellular vesicles in a rat cardiac ischemia/reperfusion
356 model⁴⁷. In humans, Oren et al.⁴⁸ found CRP, GM-CSF and IL3 to be significantly upregulated
357 in the first 12 hours of patients presenting to the emergency department with acute myocardial
358 infarctions.

359

360 We found placental endothelial cells and syncytiotrophoblasts express CD123, the protein
361 product of *IL3RA*, with syncytiotrophoblast CD123 expression being a better correlate of *IL3RA*
362 levels by RNA-sequencing. Syncytiotrophoblasts and decidual endothelial cells interact with the
363 maternal systemic circulation at the intervillous space and decidua respectively⁴⁹⁻⁵⁰.
364 CD123/*IL3RA* localization to these cell types suggests *IL3RA* may exert its adverse
365 cardiovascular effects via interactions with the maternal systemic circulation and circulating

366 immune cells. In support of this theory is the finding by Anzai et al.⁵¹ that T-cell derived IL3
367 acted on *IL3RA*-expressing cardiac macrophages and fibroblasts to amplify autoimmune
368 inflammation in a mouse experimental myocarditis model. Furthermore, Pistulli et al⁵² found
369 accumulation of CD123+ dendritic cells in hearts of humans with acute myocarditis, and that
370 dendritic cell accumulation caused adverse left ventricular remodeling in murine model of
371 experimental myocarditis. IL5, which shares the signal transducing beta subunit with IL3-
372 *IL3RA*, is a contributor to the pathogenesis of eosinophilic myocarditis⁵³⁻⁵⁶. All together, the
373 upregulation of placental *IL3RA* in patients with sPE who develop unexplained tachycardia
374 and/or peripartum cardiomyopathy suggest that this marker may be a predictor and/or cause of
375 cardiac dysfunction, perhaps via interaction with circulating immune cells that then accumulate
376 in, and cause damage to, the heart. Studies of the crosstalk between syncytiotrophoblasts,
377 immune cells, and cardiomyocytes may yield further mechanistic insights into how the placenta
378 may cause cardiovascular damage in susceptible patients.

379
380 The patient with the highest placental *IL3RA* expression level in our RNA sequenced cohort of
381 123 patients developed peripartum cardiomyopathy (PPCM). PPCM is a non-ischemic dilated
382 reduced ejection fraction (LVEF <45%) cardiomyopathy that typically presents towards the end
383 of pregnancy and in the months following delivery⁵⁷. The incidence of PPCM varies by ancestry,
384 being highest among people of African ancestry, with incidence rates reaching 1:100 in
385 Nigeria⁵⁸, and lowest among people of Asian ancestry, with rates as low as 1:20,000 in Japan⁵⁹.
386 Currently, the etiology of PPCM is thought to be multifactorial, with proposed causes that
387 include genetic predisposition in 15% of PPCM patients⁶⁰, vasculotoxicity of a 16kDa cleaved

388 prolactin fragment⁶¹, and inflammation⁶². There is an increased association of PPCM with
389 hypertensive disorders of pregnancy, with the association being strongest with sPE⁶³.
390 A 2018 study showed a higher prevalence of loss of function variants in cardiomyopathy genes
391 among patients with PE; with *TTN* mutations being most common⁶⁴. Interestingly, the African
392 ancestry sPE patient in our study who had the highest placental *IL3RA* level and developed
393 PPCM also had a c.83401T>C variant of uncertain significance (VUS) in *TTN*.

394
395 We subsequently performed a review of our database of 2655 singleton parturitions and
396 identified 3 additional PPCM patients (4 total, including the African ancestry patient whose
397 placenta had been RNA sequenced). Of the 4 patients, syncytiotrophoblast CD123 expression,
398 our surrogate marker for high placental *IL3RA*, was identified in 1 and absent in 3. A possible
399 explanation for this finding includes differing PPCM etiologies in the 4 patients. The 3 patients
400 without evidence of elevated *IL3RA* were older at delivery (age range 31-39 years), and
401 recovered cardiac function with normalization of their LVEF by 1-2 years postpartum. In
402 contrast, the patient with elevated *IL3RA* and *TTN* c.83401T>C was age 19 at delivery and still
403 has decreased LVEF and an implanted ICD 7 years postpartum. Though assessment for
404 cardiomyopathy-associated mutations were not performed in the 3 PPCM patients whose
405 placentas were CD123-negative (due to lack of available preserved RNA), their recovery of
406 cardiac function/normalization of LVEF suggests decreased likelihood of underlying
407 cardiomyopathy-associated genetic mutations. In the IPAC (Investigations of Pregnancy-
408 associated Cardiomyopathy) cohort, the presence of *TTN* truncating variants significantly
409 correlated with lower LVEF at 1 year follow up⁶⁰.

410 Using a genomics-first approach to evaluate for heart disease associated with titin-truncating
411 variants, dilated cardiomyopathy was identified in only 7.5% of people with TTN truncating
412 variants⁶⁵. As >90% of patients with TTN truncating variants do not develop dilated
413 cardiomyopathy or PPCM, our findings of elevated placental *IL3RA* in an African ancestry
414 PPCM patient with *TTN* c.83401T>C raises the possibility that high placental *IL3RA* precipitates
415 PPCM in genetically susceptible patients.

416 Our study was retrospective and limited by the small number of PPCM patients. Prospective
417 studies of placental *IL3RA* expression relative to cardiomyopathy-associated mutation status in
418 large PPCM cohorts are thus warranted.

419

420 Conclusion

421 We sought to identify placental factors that may explain worse PE outcomes in pregnancies and
422 parturitions with maternal African ancestry and found higher upregulation of canonical PE genes
423 (*FLT1*, *LEP* and *PHYHIP*) and selective upregulation of allograft rejection/adaptive immune
424 response genes (*IL3RA*) in placentas from sPE patients of African ancestry versus sPE patients of
425 Asian and European ancestries. Furthermore, we found high placental *IL3RA* to be associated
426 with UET and PPCM in a subset of sPE patients. The higher expression of *LEP*, *FLT1*, *PHYHIP*
427 and *IL3RA* in placentas from patients of African ancestry with sPE likely contributes to the
428 worse PE outcomes in this patient population. As pregnancy is a semi-allogeneic state and HLA
429 diversity is higher in people of African ancestry⁶⁶, the possibility that the higher upregulation of
430 canonical PE genes, and selective upregulation of allograft rejection-associated genes in
431 pregnancies and parturitions with maternal African ancestry may be related to higher rates of
432 maternal-fetal HLA mismatches in this population, is an intriguing concept for future studies.

433

434 **Acknowledgement**

435 The authors are very grateful to all patients who consented and donated placental tissues to our
436 Perinatal Biorepository. We also thank Dr. Mana Parast for constructive critiques on the research
437 and manuscript.

438 **Funding**

439 This work was supported by funds from the University of California San Diego (UCSD)
440 Academic Senate grant #RG103465, the Health Resources and Services Administration of the
441 U.S Department of Health and Human Services Award Number D34HP31027 (Faculty
442 Development PIs Drs. JoAnn Trejo and Vivian Reznik), the UCSD Department of Obstetrics,
443 Gynecology, and Reproductive Sciences, the UCSD Department of Pathology and the UCSD
444 Stem Cell Program. Computational analysis was performed on the Extreme Science and
445 Engineering Discovery Environment (XSEDE) Expanse, which is supported by the National
446 Science Foundation grant #1548562 (allocation ID: MED210023). This research was partially
447 supported by the Altman Clinical & Translational Research Institute (ACTRI) at the University
448 of California, San Diego. The ACTRI is funded from awards issued by the National Center for
449 Advancing Translational Sciences, NIH UL1TR001442. This work includes data generated at the
450 UC San Diego IGM Genomics Center utilizing an Illumina NovaSeq 6000 that was purchased
451 with funding from a National Institutes of Health SIG grant (#S10 OD026929).

452 **Author contributions**

453 OA and MH designed the research; CM and MM recruited patients and collected clinical
454 information; MBJ and MM collected and managed database; LLS, and LCL were involved in
455 review of data within the obstetrics registry and adjudication of hypertensive disorders of

456 pregnancy; OA and HSL adjudicated adverse outcomes; TB performed RNA isolation; OA and
457 DP performed immunohistochemistry analysis; OA, KMF, RM and MH performed RNAseq
458 analysis; OA, MBJ, KMF, LCL and MH wrote the manuscript text. All the authors reviewed the
459 final version of the manuscript.

460 **Data and code availability**

461 RNA-seq data have been deposited to the Gene Expression Omnibus database under the
462 accession number GSE234729 and GSE186257.

463 **References**

- 464 1. Say L, Chou D, Gemmill A, Tuncalp O, Moller AB, Daniels J, Gulmezoglu AM,
465 Temmerman M, Alkema L (2014). Global causes of maternal death: a WHO systemic
466 analysis. *Lancet Global Health*; 2(6): e323-e333.
- 467 2. Breathett K, Muhlestein D, Foraker R, Gulati M (2014). Differences in preeclampsia rates
468 between African American and Caucasian women: trends from the National Hospital
469 discharge survey. *J Womens Health (Larcmt)*. 23(11): 886-893.
- 470 3. Ghosh G, Grewal J, Mannisto T, Mendola P, Chen Z, Xie Y, Laughon SK (2014).
471 Racial/ethnic differences in pregnancy-related hypertensive disease in nulliparous women.
472 *Ethn Dis*. 24(3): 283-289.
- 473 4. Caughey AB, Stotland NE, Washington AE, Escobar GJ (2005). Maternal ethnicity, paternal
474 ethnicity and parental ethnic discordance: predictors of preeclampsia. *Obstet Gynecol* 106(1):
475 156-161.
- 476 5. Bibbins-Domingo K, Grossman DC, Curry SJ, Barry MJ, Davidson KW, Doubeni CA,
477 Epling JW Jr, Kemper AR, Krist AH, Kurth AE, et al. (2017). Screening for preeclampsia:
478 US preventive task force recommendation statement. *JAMA* 317(16):1661-1667.

- 479 6. Gyamfi-Bannerman C, Pandita A, Miller EC, Boehme AK, Wright JD, Siddiq Z, D'Alton
480 ME, Friedman AM (2020). Preeclampsia outcomes at delivery and race. *J Matern Fetal*
481 *Neonatal Med* 33(21): 3619-3626.
- 482 7. Zhang M, Wan P, Ng K, Singh K, Cheng TH, Velickovic I, Dalloul M, Wlody D (2020).
483 Preeclampsia among African American pregnant women: an update on prevalence,
484 complications, etiology and biomarkers. *Obstet Gynecol Surv* 75(2): 111-120.
- 485 8. Ross KM, Dunkel Schetter C, McLemore MR, Chambers BD, Paynter RA, Baer R, Feuer
486 SK, Flowers E, Karasek D, Pantell M (2019). Socioeconomic status, preeclampsia risk and
487 gestational length in black and white women. *J Racial Ethn Health Disparities* 6(6): 1182-
488 1191.
- 489 9. Bryant AS, Seely EW, Cohen A, Lieberman E (2005). Patterns of pregnancy-related
490 hypertension in black and white women. *Hypertens Pregnancy* 24(3): 281-290.
- 491 10. Snowden JM, Mission JF, Marshall NE, Quigley B, Main E, Gilbert WM, Chung JH,
492 Caughey AB (2016). The impact of maternal obesity and race/ethnicity on perinatal
493 outcomes: independent and joint effects. *Obesity* 7: 1590-1598.
- 494 11. Soto-Wright V, Bernstein M, Goldstein DP, Berkowitz RS (1995). The changing clinical
495 presentation of complete molar pregnancy. *Obstet Gynecol.* 86(5):775e779.
- 496 12. Steegers EA, Von Dadelszen P, Duvekot JJ, Pijnenborg R (2010). Pre-eclampsia. *Lancet.*
497 376(9741):631e644.
- 498 13. August P, Sibai BM. Preeclampsia: clinical features and diagnosis. In: Lockwood CJ, ed.
499 UpToDate. UpToDate, Inc; 2019.
- 500 14. Leavey K, Bainbridge SA, Cox BJ (2015). Large scale aggregate microanalysis reveals three
501 distinct molecular subclasses of human preeclampsia. *PLoS ONE* 10(2): e0116508

- 502 15. Leavey K, Benton SJ, Grynspan D, Kingdom JC, Bainbridge SA, Cox BJ (2016).
503 Unsupervised placental gene expression profiling identifies clinically relevant subclasses of
504 human preeclampsia. *Hypertension* 68: 137-147
- 505 16. Horii M, To C, Morey R, Jacobs MB, Li Y, Nelson KK, Meads M, Siegel BA, Pizzo D,
506 Adami R, et al. (2023). Histopathologic and transcriptomic profiling identifies novel
507 trophoblast defects in patients with preeclampsia and maternal vascular malperfusion. *Mod*
508 *Pathol.* 36(2): 100035
- 509 17. Dobin A, Davis CA, Schlesinger F, Drenkow J, Zaleski C, Jha S, Batut P, Chaisson M,
510 Gingeras TR (2013). STAR: ultrafast universal RNA-seq aligner. *Bioinformatics.*
511 29(1):15e21.
- 512 18. Towns J, Cockerill T, Dahan M, Foster I, Gaither K, Grimshaw A, Hazlewood V, Lathrop S,
513 Lifka D, Peterson G, et al. (2014). XSEDE: accelerating scientific discovery. *Comput Sci*
514 *Eng.* 16(5):62e74.
- 515 19. Love MI, Huber W, Anders S. (2014). Moderated estimation of fold change and dispersion
516 for RNA-seq data with DESeq2. *Genome Biol.* 15(12):550.
- 517 20. Durinck S, Spellman PT, Birney E, Huber W. (2009). Mapping identifiers for the integration
518 of genomic datasets with the R/Bioconductor package biomaRt. *Nat Protoc.* 4(8):1184e1191.
- 519 21. Kuleshov MV, Jones MR, Rouillard AD, Fernandez NF, Duan Q, Wang Z, Koplev S,
520 Jenkins SL, Jagodnik KM, Lachmann A, et al. (2016). Enrichr: a comprehensive gene set
521 enrichment analysis web server 2016 update. *Nucleic Acids Res.* 44(W1):W90eW97.
- 522 22. Liberzon A, Birger C, Thorvaldsdóttir H, Ghandi M, Mesirov JP, Tamayo P. (2015). The
523 Molecular Signatures Database (MSigDB) hallmark gene set collection. *Cell Syst.*
524 23;1(6):417-425.

- 525 23. Hulsen T, de Vlieg J, Alkema W. (2008). BioVenn – a web application for the comparison
526 and visualization of biological lists using area-proportional Venn diagrams. *BMC Genomics*
527 9 (1): 488.
- 528 24. Khong TY, Mooney EE, Ariel I, Balmus NCM, Boyd TK, Brundler MA, Derricott H, Evans
529 MJ, Faye-Petersen OM, Gillan JE, et al (2016). Sampling and definitions of placental lesions:
530 Amsterdam placental workshop group consensus statement. *Arch Pathol Lab Med.*
531 140(7):698e713.
- 532 25. Redline RW, Ravishankar S, Bagby CM, Saab ST, Zarei S (2021). Four major patterns of
533 placental injury: a stepwise guide for understanding and implementing the 2016 Amsterdam
534 consensus. *Mod Pathol.* 34(6):1074e1092.
- 535 26. Brew O, Sullivan MHF, Woodman A (2016). Comparison of normal and preeclamptic
536 placental gene expression: a systematic review with meta-analysis. *PLoS ONE* 11(8):
537 e0161504.
- 538 27. Kaartokallio T, Cervera A, Kyllonen A, Laivuori K, Kere J, Laivuori H (2015). Gene
539 expression profiling of preeclamptic placentae by RNA sequencing. *Scientific reports* 5:
540 14107.
- 541 28. Varkonyi T, Nagy B, Fule T, Tarca AL, Karaszi K, Schonleber J, Hupuczi P, Mihalik N,
542 Kovalsky I, Rigo J Jr, et al. (2011). Microarray profiling reveals that placental transcriptomes
543 of early-onset HELLP syndrome and preeclampsia are similar. *Placenta.* 32: S21-S29.
- 544 29. de Knegt VE, Hedley PL, Kanters JK, Thagaard IN, Krebs L, Christiansen M, Lausten-
545 Thomsen U (2021). The role of leptin in fetal growth during preeclampsia. *Int. J. Mol. Sci.*
546 22: 4569

- 547 30. Mellot E, Faulkner JL (2023). Mechanisms of leptin-induced endothelial dysfunction. *Curr*
548 *Opin Nephrol Hypertens.* 32(2): 118-123.
- 549 31. Huang Q, Hao S, You J, Yao X, Li Z, Schilling J, Thyparambil S, Liao WL, Zhou X, Mo L,
550 et al. (2021). Early pregnancy prediction of risk for preeclampsia using maternal blood
551 leptin/ceramide ratio: discovery and confirmation. *BMJ Open* 11: e050963.
- 552 32. Wang Y, Lim R, Nie G. Htra4 may play a major role in inhibiting endothelial repair in
553 pregnancy complication preeclampsia (2019). *Scientific Reports* 9: 2728
- 554 33. Xu X, Huang H, Cai M, Qian Y, Han Y, Xiao L, Zhou W, Wang X, Shi B (2011). Serum
555 hematopoietic growth factors as diagnostic can prognostic markers of acute renal allograft
556 rejection: a potential role for serum stem cell factor. *Cytokine.* 56: 779-785.
- 557 34. Nocera A, Tagliamacco A, Ferrante A, Fontana I, Rolla D, De Palma R, Del Galdo F,
558 Ginevri F, Barocci S, Valente U (2005). Cytotoxic molecule mRNA expression in
559 chronically rejected human kidney allografts. *Transplant Proc.* 37: 2476-2478.
- 560 35. Balam S, Schiechl-Brachner G, Buchtler S, Halbritter D, Schmidbauer K, Talke Y,
561 Neumayer S, Salewski J, Winter F, Karasuyama K, et al. (2019). IL-3 triggers chronic
562 rejection of cardiac allografts by activation of infiltrating basophils. *J Immunol.* 202: 3514-
563 3523.
- 564 36. Murkherjee A, Sidis Y, Mahan A, Raheer MJ, Xia Y, Rosen EB, Bloch KD, Thomas MK,
565 Schneyer AL (2007). FSTL3 deletion reveals roles for TGF-beta family ligands in glucose
566 and fat homeostasis in adults. *Proc Natl Acad Sci* 104 (4): 1348-1353.
- 567 37. Gong S, Gaccioli F, Dopierala J, Sovio U, Cook E, Volders PJ, Martens L, Kirk PDW,
568 Richardson S, Smith GCS, Charnock-Jones DS (2021). The RNA landscape of the human
569 placenta in health and disease. *Nat Commun* 12(1): 2639.

- 570 38. Maynard SE, Min JY, Merchan J, Lim KH, Li J, Mondal S, Libermann TA, Morgan JP,
571 Sellke FW, Stillman IE, et al. (2003). Excess placental soluble fms-like tyrosine kinase 1
572 (sFlt1) may contribute to endothelial dysfunction, hypertension and proteinuria in
573 preeclampsia. *J Clin Invest* 111(5): 649-658.
- 574 39. Zeisler H, Llurba E, Chantraine F, Vatish M, Staff AC, Sennstrom M, Olovsson M,
575 Brennecke SP, Stephan H, Allegranza D, et al. (2016). Predictive value of the sFlt-1:PIGF
576 ratio in women with suspected preeclampsia. *N Engl J Med* 374(1): 13-22.
- 577 40. Hamann A, Matthaei S (1996). Regulation of energy balance by leptin. *Exp Clin Endocrinol*
578 *Diabetes* 104(4): 293-300.
- 579 41. Koh JT, Lee ZH, Ahn KY, Kim JK, Bae CS, Kim HH, Kee JH, Kim KK (2001).
580 Characterization of mouse brain-specific angiogenesis inhibitor 1 (BAI1) and phytonyl-CoA-
581 alpha-hydroxylase-associated protein 1, a novel BAI1-binding protein. *Brain Res Mol Brain*
582 *Res* 87(2): 223-237.
- 583 42. Blair JD, Yuen RKC, Lin BK, McFadden DE, von Dadelszen P, Robinson WP (2013).
584 Widespread DNA hypomethylation at gene enhancer regions in placentas associated with
585 early-onset preeclampsia. *Mol Hum Reprod* 19(10): 697-708.
- 586 43. Leavey K, Wilson SL, Bainbridge SA, Robinson WP, Cox BJ (2018). Epigenetic regulation
587 of placental gene expression in transcriptional subtypes of preeclampsia. *Clin Epigenetics*
588 10:28.
- 589 44. Broughton SE, Hercus TR, Nero TL, Kan WL, Barry EF, Dottore M, Cheung Tung Shing
590 KS, Morton CJ, Dhagat U, Hardy MP, et al (2018). A dual role for the N-terminal domain of
591 the IL-3 receptor in cell signaling. *Nat. Commun.* 9: 386

- 592 45. Broughton SE, et al. (2012). The GM-CSF/IL-3/IL-5 cytokine receptor family: from ligand
593 recognition to initiation of signaling. *Immunol. Rev.* 250: 277-302.
- 594 46. Vistnes M, Waehre A, Nygard S, Sjaastad I, Andersson KB, Husberg C, Christensen G
595 (2010). Circulating cytokine levels in mice with heart failure are etiology dependent. *J Appl*
596 *Physiol.* 108: 1357-1364.
- 597 47. Penna C, Femmino S, Tapparo M, Lopatina T, Espolin Fladmark K, Ravera F, Comita S,
598 Alloatti G, Giusti I, Dolo V, et al. (2020). The inflammatory cytokine IL-3 hampers
599 cardioprotection mediated by endothelial cell-derived extracellular vesicles possibly via their
600 protein cargo. *Cells.* 10:13. doi: 10.3390/cells10010013.
- 601 48. Oren H, Riza Erbay A, Balci M, Cehreli S (2007). Role of novel mediators of inflammation
602 in left ventricular remodeling in patients with acute myocardial infarction: do they affect
603 outcome of patients? *Angiology* 58: 45-54.
- 604 49. Moffett A, Locke C (2006). Immunology of placentation in eutherian mammals. *Nat. Rev.*
605 *Immunol.* 6: 584-594.
- 606 50. Aisagbonhi A, Morris GP (2022). Human leukocyte antigens in pregnancy and preeclampsia.
607 *Front Genet* 13: 884275. doi: 10.3389/fgene.2022.884275.
- 608 51. Anzai A, Mindur JE, Halle L, Sano S, Choi JL, He S, McAlpine CS, Chan CT, Kahles F,
609 Valet C, et al. (2019). Self-reactive CD4⁺ IL-3⁺ T cells amplify autoimmune inflammation in
610 myocarditis by inciting monocyte chemotaxis.
- 611 52. Pistulli R, Andreas E, Konig S, Drobnik S, Kretzschmar D, Rohm I, Lichtnauer M,
612 Heidecker B, Franz M, Mall G, et al. (2020). Characterization of dendritic cells in human and
613 experimental myocarditis. *ESC Heart Fail.* 7: 2305-2317.

- 614 53. Yadavalli CS, Mishra A (2022). IL-5 overexpression induced blood eosinophilia associated
615 progression of cardiac abnormalities. *Int J Basic Clin Immunol.* 5: 1-7.
- 616 54. Hirasawa M, Ito Y, Shibata MA, Otsuki Y (2007). Mechanism of inflammation in murine
617 eosinophilic myocarditis produced by adoptive transfer with ovalbumin challenge. *Int Arch*
618 *Allergy Immunol.* 142: 28-39.
- 619 55. Song T, Jones DM, Homsy Y (2017). Therapeutic effect of anti-IL-5 on eosinophilic
620 myocarditis with large pericardial effusion. *BMJ Case Rep.* 2017:bcr2016218992.
- 621 56. Desreumax P, Janin A, Dubucquoi S, Copin MC, Torpier G, Capron A, Capron M, Prin L
622 (1993). Synthesis of interleukin-5 by activated eosinophils in patients with eosinophilic heart
623 diseases. *Blood.* 82: 1553-1560.
- 624 57. Davis MB, Arany Z, McNamara DM, Goland S, Elkayam U (2020). Peripartum
625 cardiomyopathy: JACC state-of-the-art review. *J Am Coll Cardiol* 75(2): 207-221.
- 626 58. Isezuo SA, Abubakar SA (2007). Epidemiologic profile of peripartum cardiomyopathy in a
627 tertiary care hospital. *Ethn Dis* 17: 228-233.
- 628 59. Kamiya CA, Kitakaze M, Hatsue IU, Nakatani S, Murohara T, Tomoike H, Ikeda T (2011).
629 Different characteristics of peripartum cardiomyopathy between patients complicated with
630 and without hypertensive disorders – results from the Japanese nationwide survey of
631 peripartum cardiomyopathy. *Circ J* 75: 1975-1981.
- 632 60. Ware JS, Li J, Mazaika MA, Yasso CM, DeSouza T, Cappola T, Tsai EJ, Hilfiker-Kleiner D,
633 Kamiya CA, Mazzarotto F, et al. (2016). Shared genetic predisposition in peripartum and
634 dilated cardiomyopathies. *N Engl J Med* 374: 233-241.

- 635 61. Hilfiker-Kleiner D, Kaminski E, Podewski E, Bonda T, Schaefer A, Silwa K, Forster O,
636 Quint A, Landmesser U, Doerries C, et al. (2007). A cathepsin D-cleaved 16kDa form of
637 prolactin mediates postpartum cardiomyopathy. *Cell* 128(3): 589-600.
- 638 62. Bultmann BD, Klingel K, Nabauer M, Wallwiener D, Kandolf R (2005). High prevalence of
639 viral genomes and inflammation in peripartum cardiomyopathy. *Am J Obstet Gynecol* 193:
640 363-365.
- 641 63. Bello N, Rendon IS, Arany Z (2013). The relationship between preeclampsia and peripartum
642 cardiomyopathy: a systematic review and meta-analysis. *J Am Coll Cardiol* 62: 1715-1723.
- 643 64. Gammill HS, Chettier R, Brewer A, Roberts JM, Shree R, Tsigas E, Ward K (2018).
644 Cardiomyopathy and preeclampsia: shared genetics? *Circulation* 138: 2359-2366.
- 645 65. Haggerty CM, Damrauer SM, Levin MG, Birtwell D, Carey DJ, Golden AM, Hartzel DN,
646 Hu Y, Judy R, Kelly MA, et al (2019). Genomics-first evaluation of heart disease associated
647 with titin-truncating variants. *Circulation* 140(1): 42-54.
- 648 66. Prugnolle F, Manica A, Charpentier M, Guegan JF, Guernier V, Balloux F (2005). Pathogen-
649 driven selection and worldwide HLA class I diversity. *Cur Biol* 15(11): 1022-1027.

650

651 **Tables**

Gene	African ancestry		Asian ancestry		European ancestry	
	Fold change	p _{adj}	Fold change	p _{adj}	Fold change	p _{adj}
<i>LEP</i>	35.33	.0047	25.81	.00058	12.70	4.61E-06
<i>FSTL3</i>	34.03	.0017	11.14	3.55E-05	2.52	.0062
<i>HK2</i>	9.25	.0047	6.30	.00058	3.97	1.26E-05

<i>PAPPA2</i>	4.42	.02	4.25	.0021	2.96	.00015
<i>FLT-1</i>	7.54	.0032	5.88	.0011	5.04	1.21E-06
<i>ENG</i>	4.09	.0047	3.06	.0095	2.66	2.48E-05
<i>HTRA4</i>	13.56	.0076	6.15	.027	4.96	7.49E-06
<i>INHA</i>	6.52	.0367	3.38	.0041	2.38	.00024
<i>PHYHIP</i>	6.69	.0094	2.53	NS	2.60	.00038

652 Table 1: Fold changes in select genes significantly upregulated in severe PE (versus
653 normotensive controls) per ancestry. p values represent adjusted p values calculated using
654 DESeq2.
655

Ancestry	<i>IL3RA</i> level	Fold greater than average PE levels for ancestry	Peripartum cardiac symptoms	Recurrent PE (Y/N)?
African	938.05	4.5	Cough, SOB, abdominal distension 5 months post-partum. Found to have dilated cardiomyopathy with 10% LVEF; diagnosed with peripartum cardiomyopathy	Y- severe PE with IUGR 6 years later
Asian	54.91	2.3	Unexplained tachycardia that self-resolved; did not require an echocardiogram.	Y – superimposed PE 2 years later
European	167.82	4.6	Tachycardia to 120s peripartum – required echocardiogram to exclude peripartum cardiomyopathy; echo showed mild LV diastolic dysfunction and mild pulmonary hypertension, but preserved EF; tachycardia eventually self-resolved	Unknown – had a subsequent pregnancy 1 year later, but no further records after 10w4d visit

656 Table 2: Peripartum cardiac symptoms and recurrent preeclampsia in the severe preeclampsia
657 with the highest placental *IL3RA* levels for their ancestry. Abbreviations: PE: preeclampsia,
658 SOB: shortness of breath, IUGR: intrauterine growth restriction, LVEF: left ventricular ejection
659 fraction, LV: left ventricle; EF: ejection fraction
660

PPCM/ unexplained tachycardia frequency in PE patients	<i>IL3RA</i>	PPCM or unexplained tachycardia	No PPCM or unexplained tachycardia
African sPE: 1/9 (11.1%)	<i>IL3RA</i> 2-fold-fold greater than PE average for ancestry	African – 1	African – 0
Asian sPE: 1/18 (5.5%)		Asian – 1	Asian – 0
European sPE: 3/23 (13%)		European – 1	European – 0
		Total – 3	Total – 0
	<i>IL3RA</i> less than 2-fold of PE average for ancestry	African – 0	African – 8
		Asian – 0	Asian – 17
		European – 2	European – 20
		Total – 2	Total – 45
Total: 5/50 (10%)	Fisher’s exact test p-value .0005		

661 Table 3: Frequency of unexplained tachycardia or peripartum cardiomyopathy and their
662 relationship with *IL3RA* levels in parturitions complicated by preeclampsia with severe features
663 (sPE) per ancestry (N=50). Comparison placental *IL3RA* levels were set to 2-fold greater than
664 average of the levels in sPE patients per ancestry.
665

Ancestry/ Language	Age	Smoking history	BMI	GA	Preceding diagnosis	PPCM presentation	Genetics
-----------------------	-----	--------------------	-----	----	------------------------	-------------------	----------

1	African	19	NS	45.09	26.6	sPE	Cough, SOB and abdominal distension 5 months postpartum. Found to have severe LV dilatation without LVH; LVEF 10%; developed LV thrombus. Was initially considered for transplant, but LVEF improved to 40% 2 years later; but then dropped to 27% again after another 2 years (post-second pregnancy) – currently has an ICD	<i>TTN</i> c.83401T>C VUS
2	Hispanic	34	NS	26.85	33.1	sPE	Developed tachycardia, SOB, hypoxia and pulmonary edema soon after completion of emergency C-section for severe PE. Found to have normal LV size but LVEF 10-15%; improved to 28% 2 days later; then 48% 1 month later; fully (63%) 3 months later	Not performed
3	Hispanic	31	NS	31.83	36.4	sisPE	h/o poorly controlled DM2; found to have mildly decreased LVEF (49%) at 15w GA- followed by cardiology; C/S at 36w4d for sisPE; found to have moderate LV dilatation and LVEF 35-40% 3 months	Not performed

4	European	39	NS	21.28	34.5	sisPE with HELLP	postpartum; no subsequent records in our system SOB and O2 sats 80s 1 month postpartum. Found to have mild LV dilatation without LVH; LVEF 30-35%; improved to 48% 3 months later and fully (63%) 2 years later.	Not performed
---	----------	----	----	-------	------	------------------	--	---------------

666 Table 4: Clinical profile of the 4 patients with peripartum cardiomyopathy (PPCM) in our
667 database of 2655 singleton parturitions. Abbreviations: NS: never-smoker; BMI: body mass
668 index; GA: gestational age; sPE: preeclampsia with severe features; sisPE: superimposed
669 preeclampsia (i.e. preeclampsia with a history of underlying chronic hypertension) with severe
670 features; HELLP: hemolysis, elevated liver enzymes and low platelets; SOB: shortness of breath;
671 LV: left ventricle; LVH: left ventricular hypertrophy; LVEF: left ventricular ejection fraction;
672 ICD: implantable cardioverter defibrillator; DM2: type II diabetes mellitus; VUS: variant of
673 uncertain significance.
674

675 **Figure legends**

676 Figure 1: RNA sequencing study design. Abbreviations sPE: preeclampsia with severe features;
677 GA: gestational age

678 Figure 2: Genes and pathways upregulated in common in placentas from severe PE versus
679 normotensive patients of all ancestries. A. Genes upregulated in severe PE versus normotensive
680 placentas – genes in bold have been identified in multiple studies. B. Hallmark signaling
681 pathways upregulated in severe PE versus normotensive placentas. C. Heat map of top 50 genes
682 upregulated in severe preeclampsia versus normotensive controls. Arrows point to genes chosen
683 for further analysis in this study.

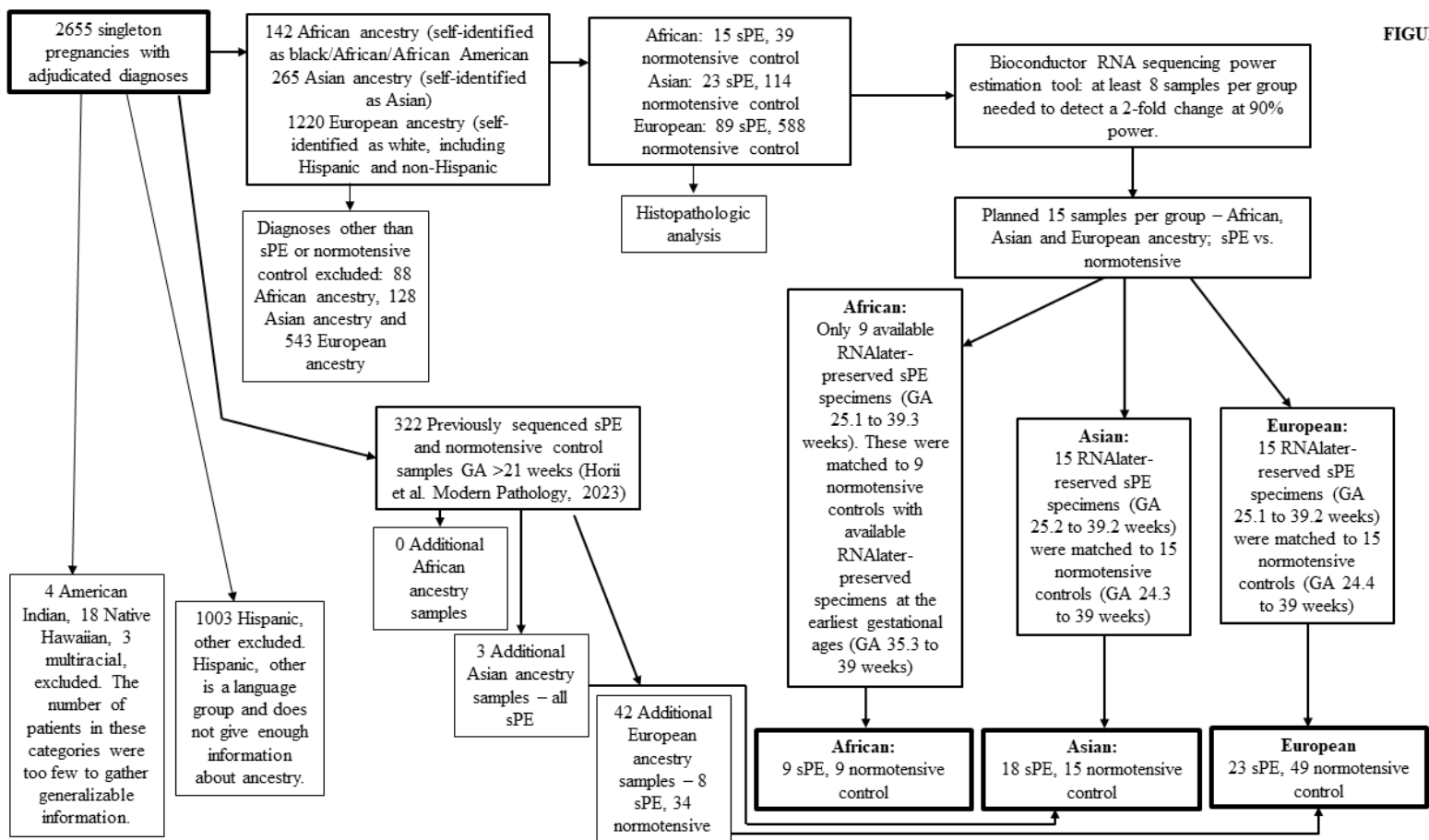
684 Figure 3: A. DEseq2 normalized expression of FLT1, LEP and PHYHIP which are more highly
685 upregulated in placentas from African ancestry patients with severe preeclampsia versus Asian

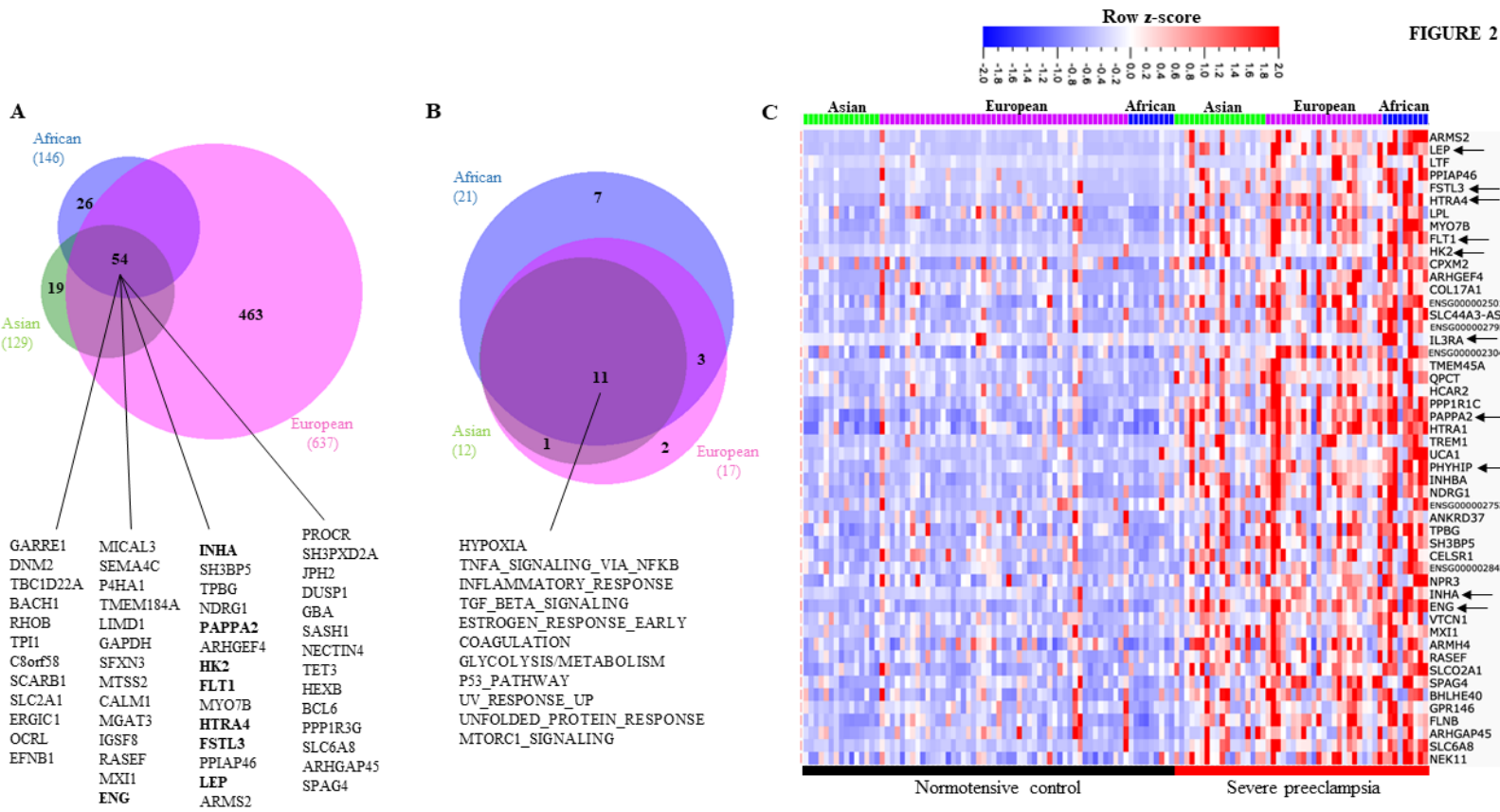
686 ancestry patients with severe preeclampsia. B. Evaluation of intrauterine growth restriction
687 (IUGR) in relation to DESeq2 normalized gene expression.

688 Figure 4: Genes and pathways uniquely upregulated in placentas from severe PE patients of
689 African ancestry and not in Asian or European ancestry severe PE patients. A. Genes uniquely
690 upregulated in placentas from severe PE patients of African ancestry - IL3RA is bolded due to its
691 significance in this study. B. Hallmark signaling pathways uniquely upregulated in placentas
692 from severe PE patients of African ancestry. C. Patients with the highest placental IL3RA levels
693 for their ancestry developed cardiac symptoms.

694 Figure 5: CD123 localization in placenta sections; in placentas with CD123 expression, variable
695 expression was seen in chorionic plate vessels (A), stem villous vessels (B), decidual vessels (C)
696 and syncytiotrophoblasts (D) (top panels are from a patient without PPCM; bottom panels are
697 from the patient with PPCM). CD123 expression in syncytiotrophoblasts correlated better with
698 IL3RA levels than expression in stem villous vessels (E and F). Abbreviations: PPCM
699 peripartum cardiomyopathy; UET: unexplained tachycardia.

700 Figure 6: Evaluating the relationship between placental CD123 expression and peripartum
701 cardiomyopathy. A. Study design. CD123 immunohistochemical stains were performed on the
702 PPCM patients of African ancestry (B), European ancestry (C) and Hispanic language group (D-
703 E). Only the African ancestry patient had detectable syncytiotrophoblast CD123 expression.
704





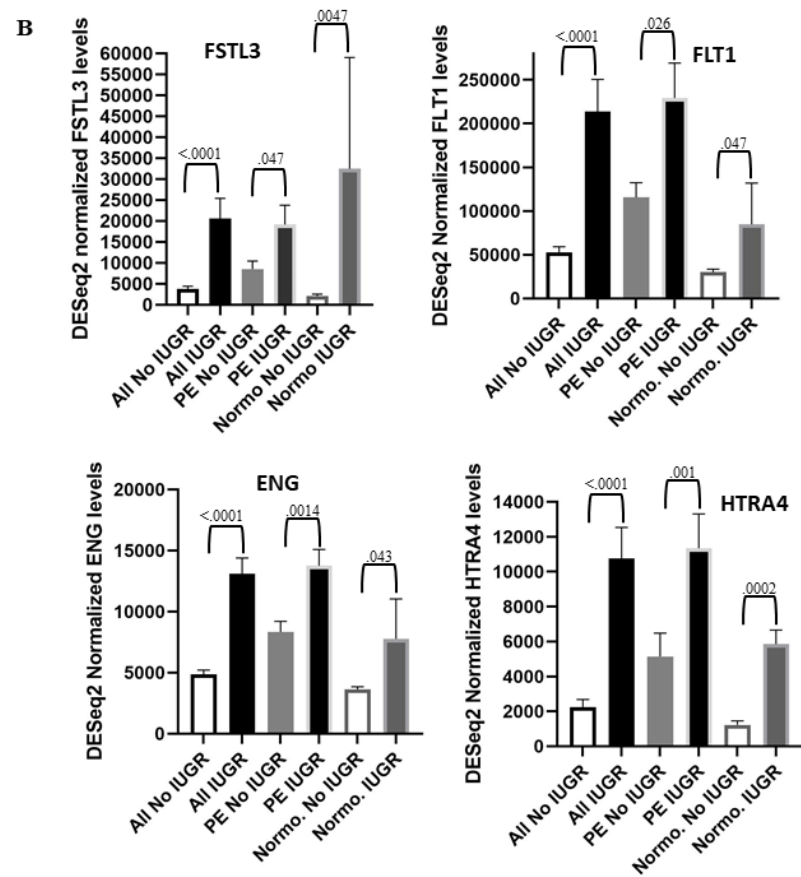
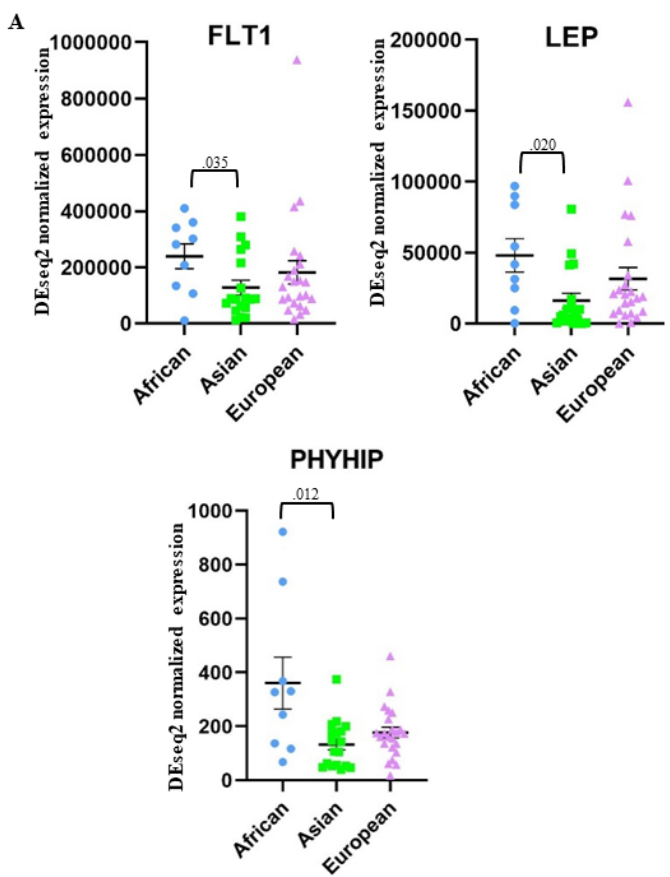


FIGURE 3

FIGURE 4

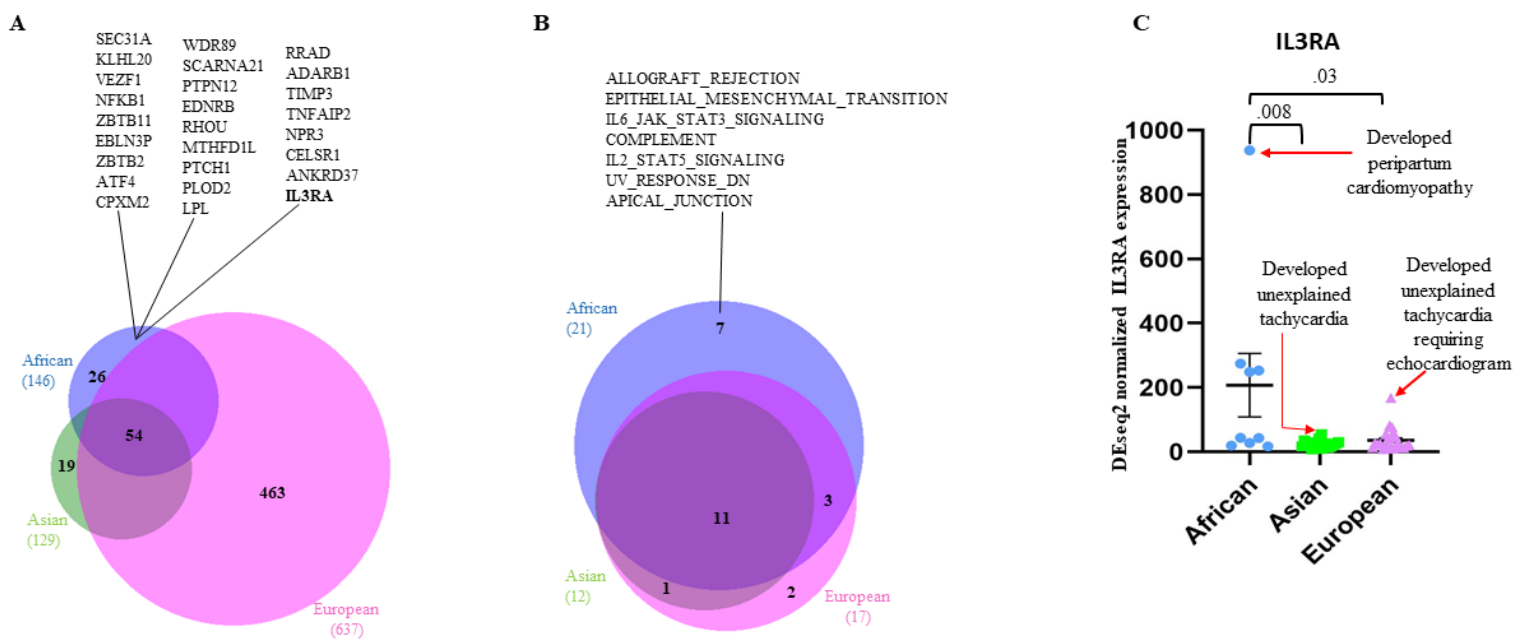


FIGURE 5

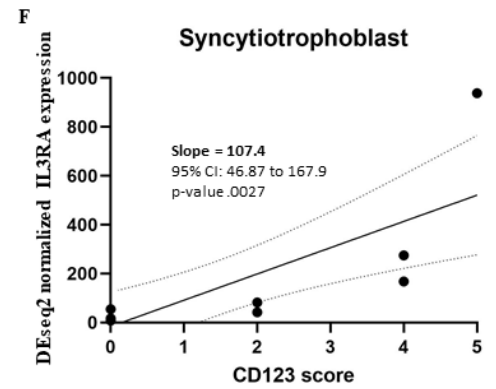
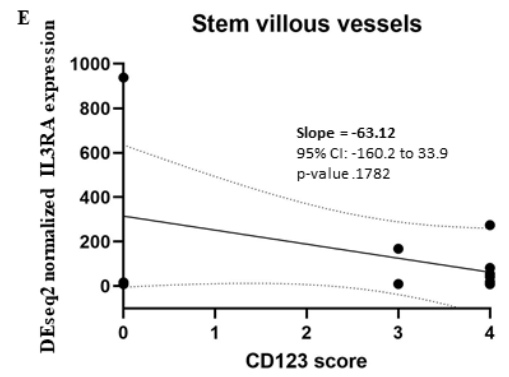
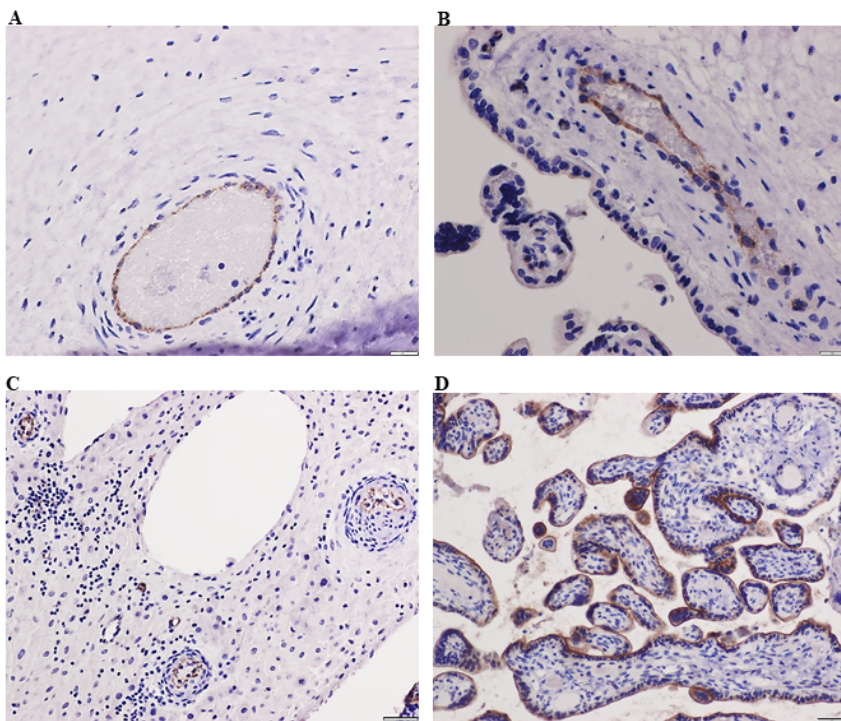


FIGURE 6

A. Study design

