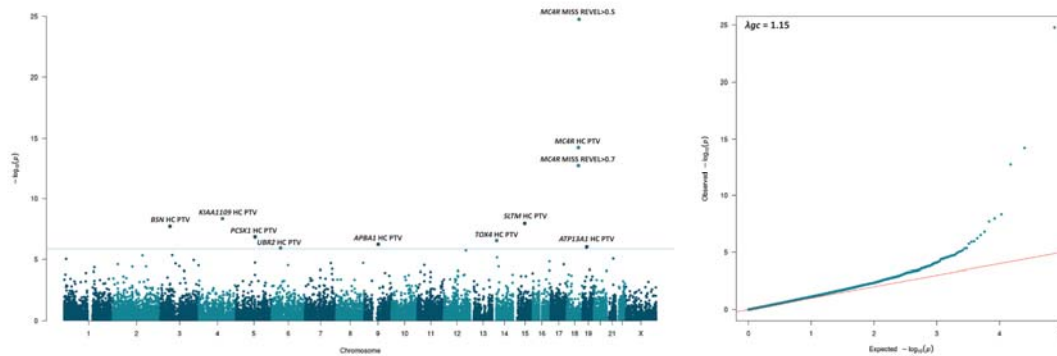


1 **Supplementary Figures**

2

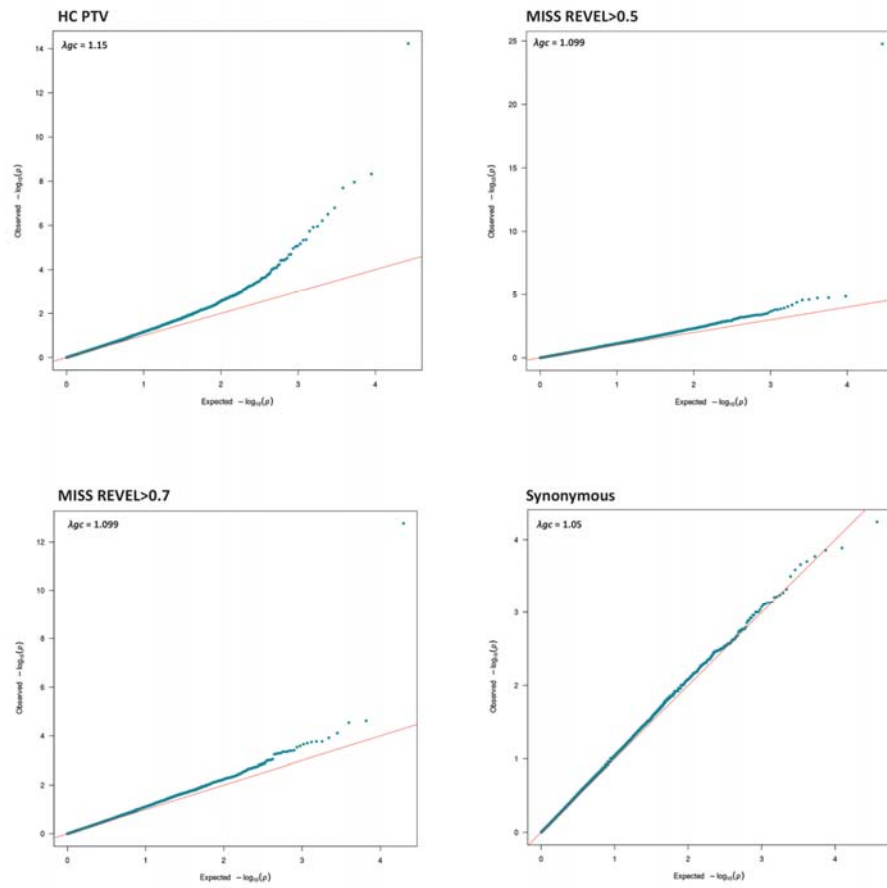
3 **Figure S1 | Exome-wide rare (MAF <0.1%) variant associations with BMI.** (a) Combined
4 Manhattan plot showing gene burden test results. Genes passing exome-wide significance
5 ($P < 1.33 \times 10^{-6}$) are highlighted. Points are annotated with variant predicted functional class
6 (MISS REVEL; missense variants with REVEL scores (above 0.5 or 0.7), HC PTV; high
7 confidence protein truncating variants). (b) Combined QQ plot for the gene burden tests.

8



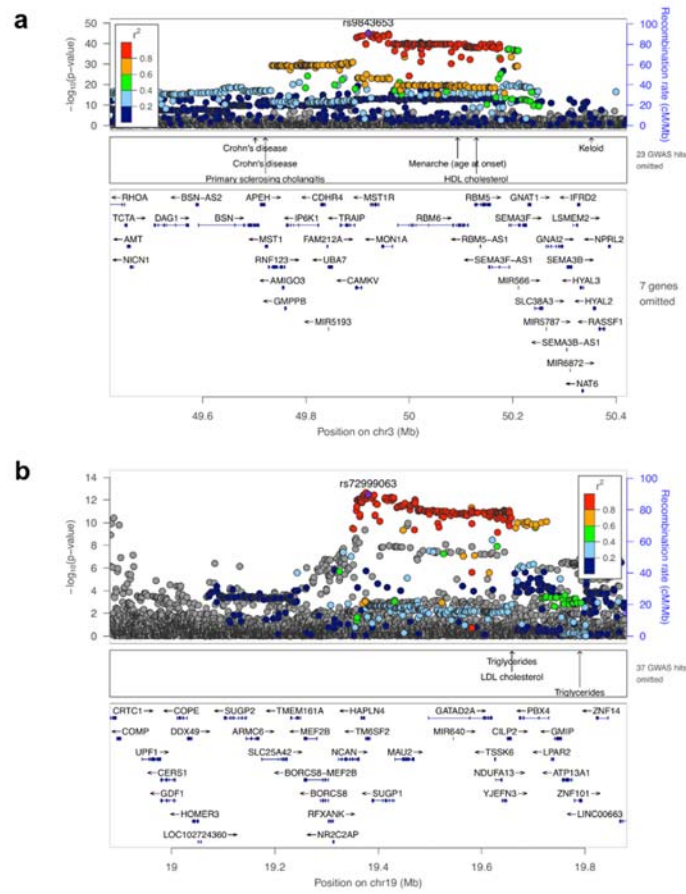
9
10
11

12 **Figure S2 | Synonymous variant associations with BMI.** Comparison of the QQ plots for
13 gene burden associations for the three discovery variant mask and the synonymous variant
14 mask.



15
16
17

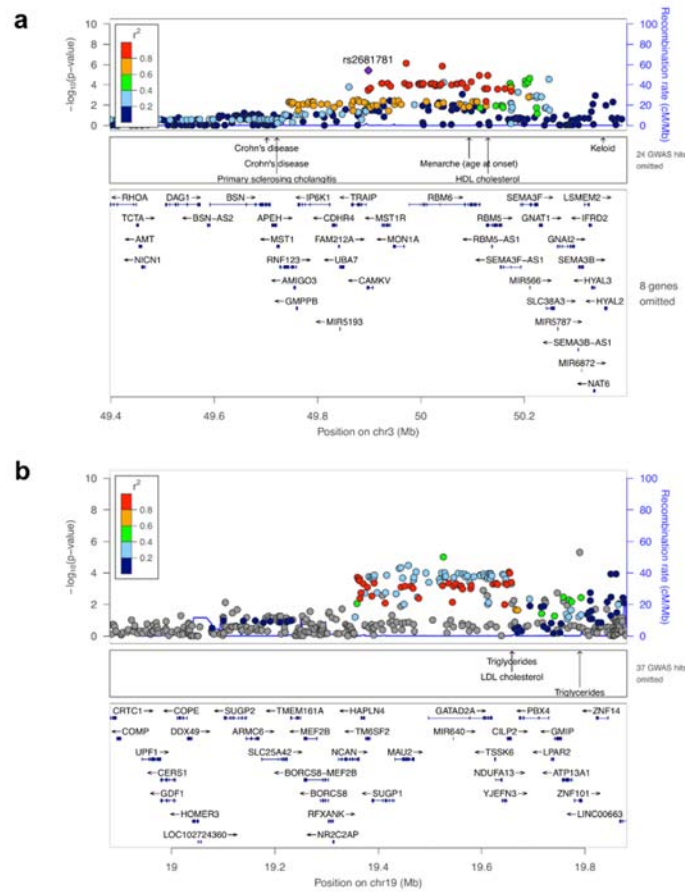
18 **Figure S3 | GWAS loci proximal to the exome-wide significant genes.** Associations in the
 19 UK Biobank BMI GWAS surrounding ($\pm 500\text{kb}$) the 2 genes identified by exome-wide
 20 association with BMI, *BSN* (a) and *ATP13A1* (b). Relevant data are included in Table S2.



21

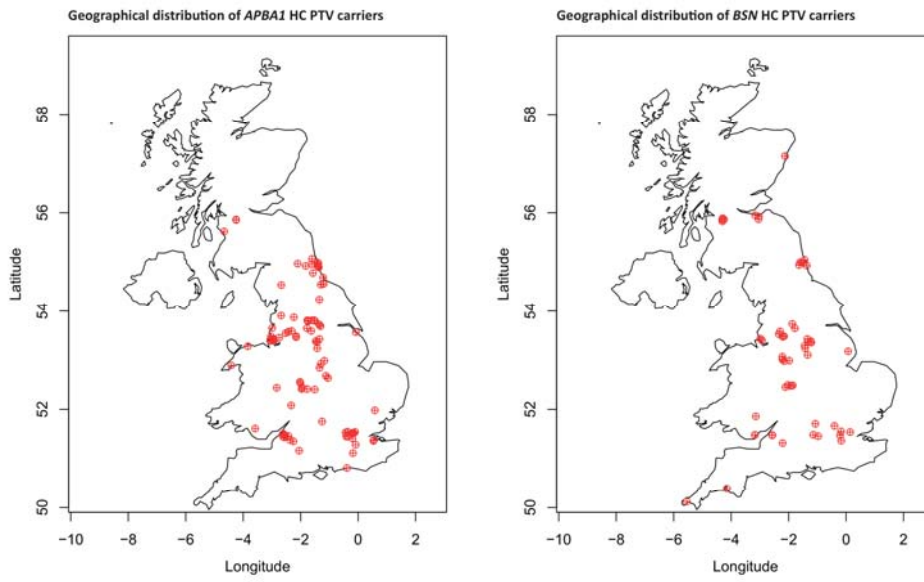
22

23 **Figure S4 | Replication of GWAS signals in Locke et al.¹** Associations from the UK
 24 Biobank BMI GWAS at the *BSN* (a) and *ATP13A1* (b) loci, were further queried in an
 25 independent GWAS cohort. Relevant data are included in Table S2.



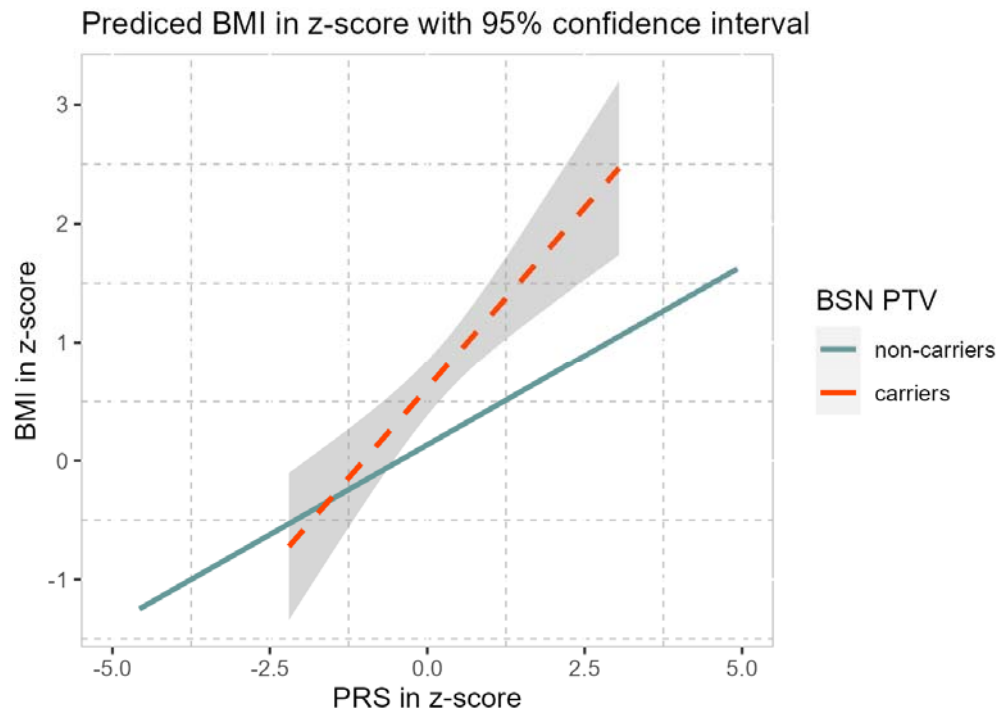
26
 27
 28

29 **Figure S5 | Geographical distribution of *APBA1* and *BSN* HC PTV carriers.**



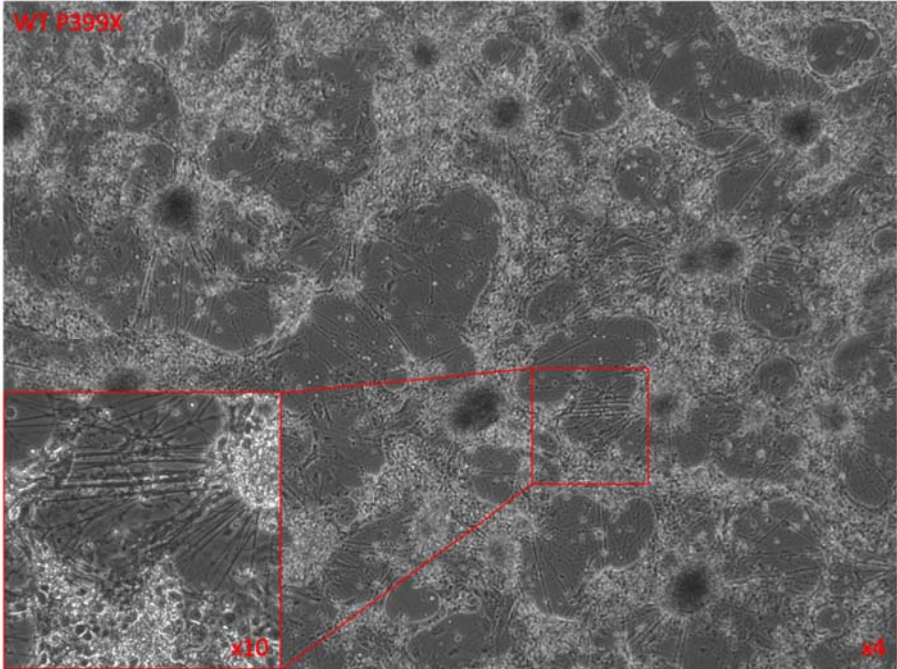
30
31
32

33 **Figure S6 | Interaction effect between PGS and *BSN* HC PTV carrier status.** Evidence of
34 an interaction effect between PGS and carrier status of *BSN* HC PTV (beta=0.31, 95% CI:
35 0.12-0.60; p=0.01) such that the combined effect of one unit increase in PRS and being a
36 carrier is greater than the sum of their marginal effect by 0.3 standard deviation in BMI.

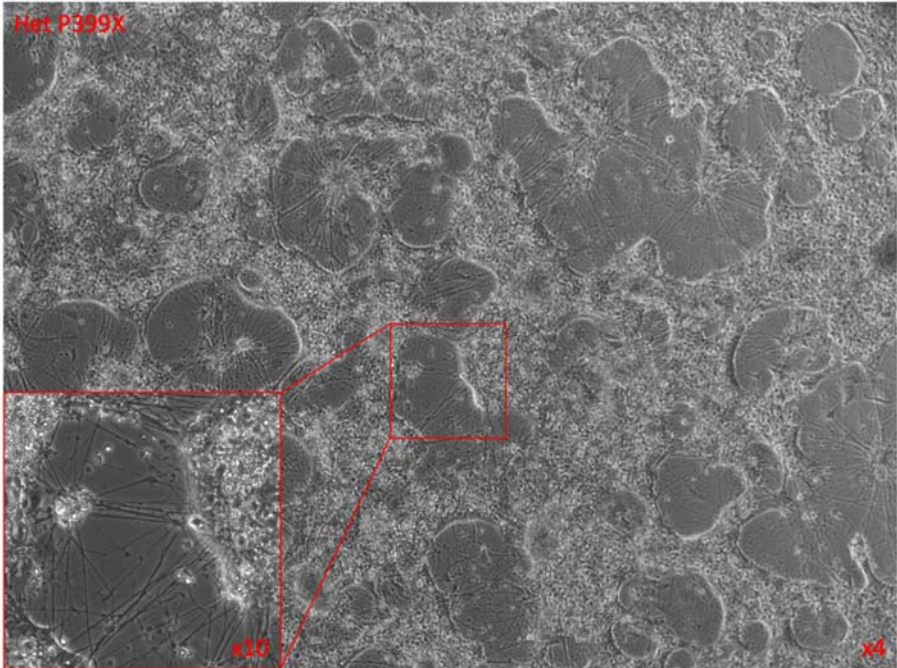


37
38
39

40 **Figure S7 | Kolf2 iPSCs differentiation into hypothalamic neurons.** Kolf2 iPSCs are
41 shown here on day 36 of differentiation. The top panel shows the WT and bottom panel –
42 *BSN* Het P399X.



43

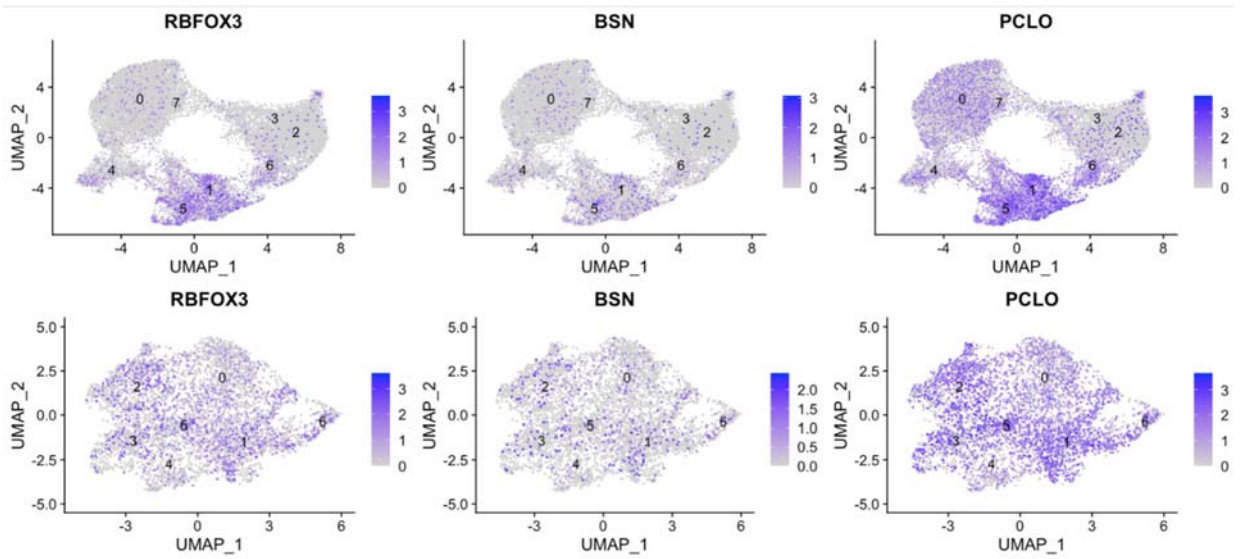


44

45

46

47 **Figure S8 | UMAP plots showing normalized expression of *RBFOX3*, *BSN* and *PCLO*.**
48 Top row shows clustering of all the cells from single nucleus RNAseq. Bottom row shows re-
49 reclustering of clusters 1 and 5 from the top row.



50

51

52

53 **References**

- 54 1. Locke, A. E. *et al.* Genetic studies of body mass index yield new insights for obesity
55 biology. *Nature* 2015 518:7538 **518**, 197–206 (2015).

56