

Supplementary Tables, Figures, and Methods

Table S1 Epidemiological details of the all the study subjects used in fecal metagenomics study. A/NTB: active/non-tuberculosis; M: months; NA: not available

		Case-control study						Follow-up study				
		Site-I			Site-II			Site-I				
Demographic details	Total	ATB	NTB	Healthy	ATB	NTB	Healthy	0M	2M	4M	6M	8M
Population size	107	14	16	15	12	6	13	10	7	6	4	4
Mean age (range) in years	43.2 (18-76)	35.64 (20-60)	40.56 (18-70)	50.2 (25-68)	45.5 (25-70)	52.17 (42-61)	46.7 (19-70)	38.20 (20-76)	45 (24-76)	45 (27-76)	32.25 (23-55)	45 (24-56)
Gender (Female/Male)	32/75	4/10	1/15	6/9	4/8	-/6	3/10	4/6	5/2	3/3	2/2	-/4
Body mass index (kg/m ²)		21.93	23.94	25.24	NA	NA	NA	20.51	NA	NA	NA	NA
Cough (y/n/na)	60/18/29	14/-/-	15/1/-	-/-/15	11/-/1	6/-/-	1/4/8	10/-/-	-/5/2	3/2/1	-/3/1	-/3/1
Expectoration (y/n/na)	47/25/35	10/3/1	12/4/-	-/-/15	10/1/1	6/-/-	-/-/13	8/2/-	-/5/2	1/4/1	-/3/1	-/3/1
Haemoptysis (y/n/na)	20/58/29	5/9/-	4/12/-	-/-/15	3/8/1	4/2/-	-/5/8	4/6/-	-/5/2	-/5/1	-/3/1	-/3/1
Chest pain (y/n/na)	38/40/29	8/6/-	9/7/-	-/-/15	10/1/1	2/4/-	-/5/8	9/1/-	-/5/2	-/5/1	-/3/1	-/3/1
Breathlessness (y/n/na)	34/44/29	8/6/-	9/7/-	-/-/15	8/3/1	2/4/-	-/5/8	7/3/-	-/5/2	-/5/1	-/3/1	-/3/1
Wheeze (y/n/na)	28/50/29	8/6/-	7/9/-	-/-/15	6/5/1	-/6/-	-/5/8	7/3/-	-/5/2	-/5/1	-/3/1	-/3/1
Body temp. (>37 °C/normal/na)	34/45/28	8/6/-	6/10/-	-/-/15	11/1/-	4/2/-	-/5/8	5/5/-	-/5/2	-/5/1	-/3/1	-/3/1
Smoking (y/n/na)	16/23/68	-/4/10	3/13/-	-/-/15	8/3/1	3/3/-	2/-/11	-/-/10	-/-/7	-/-/6	-/-/4	-/-/4
Alcoholism (y/n/na)	20/37/50	1/3/10	7/9/-	5/10/-	5/6/1	2/4/-	-/5/8	-/-/10	-/-/7	-/-/6	-/-/4	-/-/4
Sputum AFB Test (+ve/-ve/na)	23/45/39	10/4/-	-/16/-	-/-/15	4/8/-	-/-/6	-/-/13	9/1/-	-/5/2	-/5/1	-/3/1	-/3/1
GeneXpert test result (+ve/-ve/na)	35/24/48	12/1/1	-/16/-	-/-/15	11/1/-	-/6/-	-/-/13	8/-/2	4/-/3	-/-/6	-/-/4	-/-/4
MGIT Culture test (+ve/-ve/na)	13/39/55	5/9/-	-/16/-	-/-/15	4/8/-	-/-/6	-/-/13	4/4/2	-/2/5	-/-/6	-/-/4	-/-/4
Rif resistance (+ve/-ve/na)	8/27/72	-/12/2	-/-/16	-/-/15	8/3/1	-/-/6	-/-/13	-/8/2	-/4/3	-/-/6	-/-/4	-/-/4

Table S2 Epidemiological details of study subjects used in fecal metabolomics. A/NTB: active/non-tuberculosis; M: months; NA: not available

	Total	Case-control study						Follow-up study				
		Site-I			Site-II			Site-I				
		ATB	NTB	Healthy	ATB	NTB	Healthy	0 M	2 M	4 M	6 M	8 M
Demographic details	94	13	12	15	11	6	13	9	4	4	3	4
Population size	45.2 (18-76)	36.2 (20-60)	40.2 (18- 63)	50.2 (25-68)	47.1 (25-70)	52.2 (42-61)	46.7 (19-70)	35.67 (20-76)	52.8 (24-76)	50.25 (27-76)	35.3 (24-55)	45 (24-56)
Mean age (range) in years	25/69	4/9	1/11	6/9	4/7	-/6	3/10	3/6	2/2	1/3	1/2	-/4
Gender (Female/Male)		22.33	24.35	NA	NA	NA	NA	20.27	NA	NA	NA	NA
Body mass index (kg/m ²)	52/16/26	13/-/-	11/1/-	-/-/15	10/-/1	6/-/-	1/4/8	9/-/-	-/4/-	2/2/-	-/2/1	-/3/1
Cough (y/n/na)	41/21/32	10/2/1	8/4/-	-/-/15	9/1/1	6/-/-	-/-/13	7/2/-	-/4/-	1/3/-	-/2/1	-/3/1
Expectoration (y/n/na)	20/48/26	5/8/-	4/8/-	-/-/15	3/7/1	4/2/-	-/5/8	4/5/-	-/4/-	-/4/-	-/2/1	-/3/1
Haemoptysis (y/n/na)	33/35/26	7/6/-	7/5/-	-/-/15	9/1/1	2/4/-	-/5/8	8/1/-	-/4/-	-/4/-	-/2/1	-/3/1
Chest pain (y/n/na)	30/38/26	8/5/-	7/5/-	-/-/15	7/3/1	2/4/-	-/5/8	6/3/-	-/4/-	-/4/-	-/2/1	-/3/1
Breathlessness (y/n/na)	24/44/26	8/5/-	6/6/-	-/-/15	5/5/1	-/6/-	-/5/8	5/4/-	-/4/-	-/4/-	-/2/1	-/3/1
Wheeze (y/n/na)	31/38/25	8/5/-	5/7/-	-/-/15	10/1/-	4/2/-	-/5/8	4/5/-	-/4/-	-/4/-	-/2/1	-/3/1
Body temp. (>37 °C/normal/na)	15/18/61	-/3/10	3/9/-	-/-/15	7/3/1	3/3/-	2/-/11	-/-/9	-/-/4	-/-/4	-/-/3	-/-/4
Smoking (y/n/na)	12/24/58	1/2/10	5/7/-	-/-/15	4/6/1	2/4/-	-/5/8	-/-/9	-/-/4	-/-/4	-/-/3	-/-/4
Alcoholism (y/n/na)	22/36/23	10/3/-	-/12/-	-/-/15	4/7/-	-/-/6	-/-/13	8/1/-	-/4/-	-/4/-	-/2/1	-/3/1
Sputum AFB Test (+ve/-ve/na)	33/20/41	11/1/1	-/12/-	-/-/15	10/1/-	-/6/-	-/-/13	9/-/-	3/-/1	-/-/4	-/-/3	-/-/4
GeneXpert test result (+ve/-ve/na)	13/32/49	5/8/-	-/12/-	-/-/15	3/8/-	-/-/6	-/-/13	4/3/2	-/2/2	-/-/4	-/-/3	-/-/4
MGIT Culture test (+ve/-ve/na)	8/23/63	-/11/2	-/-/12	-/-/15	8/2/1	-/-/6	-/-/13	-/8/1	-/2/2	-/-/4	-/-/3	-/-/4
Rif resistance (+ve/-ve/na)												

Table S3 DADA2 summary statistics table for fecal samples of ATB, NTB, and healthy subjects from site-I

Subjects id	Input	Filtered	Filtered (%)	Denoisied	Merged	Merged (%)	Non-chimeric	Non-chimeric (%)
A1	112758	79228	70.26	77646	73907	65.54	64496	57.2
A11	156643	100736	64.31	99655	97062	61.96	83714	53.44
A18	111758	64996	58.16	63664	60177	53.85	38354	34.32
A2	120889	84307	69.74	83541	81221	67.19	69129	57.18
A21	121746	86056	70.68	85900	85250	70.02	79713	65.47
A22	110948	74693	67.32	71963	66639	60.06	50656	45.66
A23	118916	83186	69.95	82289	79004	66.44	61618	51.82
A24	132195	93811	70.96	93569	93067	70.4	91305	69.07
A25	123711	82989	67.08	80692	76142	61.55	59343	47.97
A27	136003	84811	62.36	82014	76223	56.05	54822	40.31
A4	133774	92092	68.84	91450	88743	66.34	57172	42.74
A5	124175	83941	67.6	80959	74112	59.68	56944	45.86
A6	131797	90972	69.02	89012	84394	64.03	59134	44.87
A8	126737	85347	67.34	84123	82137	64.81	69485	54.83
H1	158247	86417	54.61	84870	80256	50.72	63029	39.83
H10	140986	79940	56.7	77470	71227	50.52	54266	38.49
H11	152763	96080	62.89	92123	84227	55.14	64911	42.49
H12	135582	81474	60.09	77830	69301	51.11	45815	33.79
H13	130412	73166	56.1	72418	69216	53.07	56435	43.27
H14	144621	83871	57.99	81086	74945	51.82	58849	40.69
H15	149448	85769	57.39	82584	76071	50.9	61022	40.83
H2	153948	94010	61.07	90586	82343	53.49	58282	37.86
H3	147012	89913	61.16	86959	80439	54.72	62069	42.22
H4	114958	62003	53.94	60678	56284	48.96	44224	38.47
H5	129370	77943	60.25	75643	70811	54.74	53803	41.59
H6	146368	91023	62.19	87017	78168	53.41	57861	39.53
H7	133658	85399	63.89	82850	75362	56.38	55856	41.79
H8	130584	72877	55.81	70722	65578	50.22	47491	36.37
H9	134410	79320	59.01	76542	69536	51.73	52770	39.26
N1	119804	82054	68.49	80159	74917	62.53	57842	48.28
N10	125944	93046	73.88	92912	92677	73.59	91922	72.99
N11	120415	82125	68.2	80897	76926	63.88	62505	51.91
N12	121383	82589	68.04	81634	78949	65.04	67118	55.29
N13	115124	78318	68.03	74877	69169	60.08	56154	48.78
N14	106069	66031	62.25	65179	63086	59.48	53941	50.85
N15	131180	83418	63.59	82554	78925	60.17	63682	48.55
N16	129139	80797	62.57	77649	70662	54.72	53470	41.4
N2	126367	81501	64.5	79349	73337	58.03	56420	44.65
N3	126675	87261	68.89	86847	85432	67.44	66118	52.19
N4	116165	70339	60.55	67866	60940	52.46	49661	42.75
N5	117123	76462	65.28	74956	71200	60.79	52144	44.52
N6	109971	72719	66.13	71756	68380	62.18	53283	48.45
N7	113941	78964	69.3	77562	73078	64.14	54272	47.63
N8	145173	103796	71.5	102830	100292	69.08	83973	57.84
N9	127391	83131	65.26	81430	77184	60.59	63368	49.74

Table S4 DADA2 summary statistics table of ATB, NTB and, healthy subjects from site-II

Sample-id	Input	Filtered	Filtered (%)	Denoisied	Merged	Merged (%)	Non-chimeric	Non-chimeric (%)
A33	131153	85291	65.03	84265	80670	61.51	61939	47.23
A34	114984	78202	68.01	78070	77856	67.71	76097	66.18
A35	136555	95495	69.93	94499	92209	67.53	69186	50.67
A36	135069	82828	61.32	81946	78110	57.83	62630	46.37
A37	110909	81444	73.43	80513	77962	70.29	58424	52.68
A38	130818	83301	63.68	83058	82418	63	80519	61.55
A39	117128	77230	65.94	76475	72799	62.15	48785	41.65
A40	112011	79174	70.68	78954	78164	69.78	71482	63.82
A41	107967	76992	71.31	76752	75773	70.18	62257	57.66
A42	115794	67435	58.24	67323	66945	57.81	65085	56.21
A44	123830	87140	70.37	86191	84185	67.98	70586	57
A45	118590	78399	66.11	77592	75958	64.05	67051	56.54
H16	136091	80729	59.32	79133	75216	55.27	54451	40.01
H17	160167	98193	61.31	95683	90408	56.45	69697	43.52
H18	152826	100572	65.81	100132	99577	65.16	96388	63.07
H19	137387	77723	56.57	75182	69252	50.41	41790	30.42
H20	146790	88563	60.33	87591	85948	58.55	74700	50.89
H21	140212	85183	60.75	82964	78983	56.33	64156	45.76
H22	100598	55353	55.02	54927	54177	53.85	49504	49.21
H23	141565	91702	64.78	89269	82875	58.54	60211	42.53
H24	124155	81514	65.66	81413	80902	65.16	75121	60.51
H25	138703	81669	58.88	79780	75217	54.23	56373	40.64
H26	125942	76631	60.85	76006	74165	58.89	56120	44.56
H27	113523	62924	55.43	62798	62462	55.02	58774	51.77
H28	134344	73499	54.71	71426	67091	49.94	51027	37.98
N17	130475	81005	62.08	79671	76325	58.5	62914	48.22
N18	124349	79349	63.81	76665	72627	58.41	57851	46.52
N19	113569	68210	60.06	67738	67072	59.06	57596	50.71
N20	131080	79761	60.85	78854	76434	58.31	51586	39.35
N21	145276	97614	67.19	97311	96142	66.18	82829	57.01
N22	147903	85650	57.91	85432	84947	57.43	79881	54.01

Table S5 DADA2 summary statistics table of metagenomics data obtained from the longitudinally followed-up tuberculosis patients

Sample-id	Input	Filtered	Filtered (%)	Denoised	Merged	Merged (%)	Non-chimeric	Non-chimeric (%)
02A_12	135345	82421	60.9	80526	76554	56.56	55769	41.21
02A_13	131136	85627	65.3	84504	81349	62.03	63389	48.34
02A_14	127672	91717	71.84	89183	84882	66.48	63287	49.57
02A_16	113279	79013	69.75	77642	73232	64.65	51101	45.11
02A_26	158840	92037	57.94	91678	90162	56.76	78760	49.58
02A_28	119065	85368	71.7	84708	82196	69.03	74037	62.18
02A_9	116555	80144	68.76	78145	73261	62.86	51037	43.79
04A_14	139950	99970	71.43	98149	93312	66.68	71737	51.26
04A_16	127139	78917	62.07	77378	73745	58	50619	39.81
04A_20	118348	77840	65.77	77017	74447	62.91	57882	48.91
04A_26	114647	74045	64.59	73580	72356	63.11	57523	50.17
04A_28	97656	68764	70.41	68148	66310	67.9	52771	54.04
04A_3	123908	86839	70.08	85570	83057	67.03	62151	50.16
06A_12	123856	83625	67.52	81273	76256	61.57	59309	47.89
06A_13	127080	87041	68.49	85948	83635	65.81	66122	52.03
06A_3	111343	74680	67.07	73431	71209	63.95	54724	49.15
06A_30	121131	77827	64.25	77085	74170	61.23	55445	45.77
08A_10	120608	87692	72.71	86632	84756	70.27	66635	55.25
08A_13	130191	88724	68.15	86532	82744	63.56	66013	50.7
08A_16	126473	88208	69.74	86358	82849	65.51	63727	50.39
08A_40	127765	90345	70.71	89637	88215	69.04	72282	56.57
A_10	116816	87448	74.86	86765	84478	72.32	69818	59.77
A_12	129590	89332	68.93	86273	80337	61.99	57205	44.14
A_13	115359	74836	64.87	74169	72054	62.46	55205	47.85
A_14	123572	86640	70.11	83226	78410	63.45	60082	48.62
A_16	133105	93621	70.34	89451	82759	62.18	65833	49.46
A_20	153189	107548	70.21	105915	101727	66.41	77337	50.48
A_26	121363	84297	69.46	83456	81137	66.85	58508	48.21
A_3	112020	74772	66.75	73551	70649	63.07	46479	41.49
A_7	123362	83166	67.42	81201	77140	62.53	59895	48.55
A_9	128263	81907	63.86	79568	75668	58.99	60333	47.04

Table S6 Important fecal metabolites (n=24) identified in drug naïve tuberculosis patients (ATB) from healthy controls recruited from site-I. FC: fold change

Name	FC	log ₂ (FC: ATB/healthy)	Raw. pval	-log ₁₀ (p)
Erythro-Pentonic acid	152.19	7.25	0.008	2.08
1H-imidazole-2-amine	41.50	5.38	0.003	2.57
Hydrocinnamic acid	36.24	5.18	0.003	2.58
Metronidazole	33.34	5.06	0.018	1.74
Malonic acid	30.46	4.93	0.021	1.67
catecholpyruvate	20.86	4.38	0.031	1.50
N-acetylputrescine	20.63	4.37	0.004	2.38
2-Piperidinone	8.78	3.13	0.046	1.34
Methylmalonic acid	8.27	3.05	0.013	1.89
Propanoic acid	6.78	2.76	0.025	1.61
a-D-(+)-Talopyranose	6.17	2.63	0.023	1.65
d-Galactose	5.57	2.48	0.016	1.79
Butyric acid, 2-amino-	4.05	2.02	0.019	1.72
Dihydrocinnamic acid	0.42	-1.26	0.043	1.37
Valeric acid	0.29	-1.80	0.016	1.79
N-acetyl-L-Aspartic acid	0.24	-2.04	0.023	1.63
tyramine	0.17	-2.57	0.042	1.37
Tetracosanoic acid	0.16	-2.62	0.007	2.16
Succinic acid	0.14	-2.79	0.037	1.43
Hexanedioic acid	0.14	-2.87	0.031	1.50
n-Pentadecanoic acid	0.09	-3.54	7.64E-05	4.12
1H-Indole	0.06	-4.14	0.005	2.29
KGDS/1	0.03	-4.92	0.002	2.60
Oleic acid	0.02	-5.37	0.037	1.44

Table S7 Important fecal metabolites (n=14) identified in drug naïve active tuberculosis patients (ATB) with respect to non-tuberculosis (NTB) controls from site-I. FC: fold change

Name	FC	log ₂ (FC:ATB/NTB)	raw.pval	-log ₁₀ (p)
Erythro-Pentonic acid	202.82	7.66	0.018	1.74
Malonic acid	18.46	4.21	0.044	1.36
2-Bromosebacic acid	7.61	2.93	0.002	2.76
Putrescine tetra-TMS	0.28	-1.83	0.033	1.48
Ornithine	0.28	-1.84	0.007	2.17
Dipterin	0.22	-2.16	0.011	1.97
Oleic acid	0.18	-2.51	0.013	1.90
4-Ketoglucose	0.16	-2.68	0.008	2.07
N-(4-Bromo-2-fluoro-phenyl)-N'-(3-morpholin-4-yl-propyl)-oxalamide	0.09	-3.42	0.049	1.31
1H-Indole	0.08	-3.56	0.040	1.40
Tetracosanoic acid	0.07	-3.78	0.009	2.05
Ala-Pro	0.07	-3.87	0.046	1.34
3-Hydroxyphenylpropionic acid	0.05	-4.33	0.037	1.44
n-Pentadecanoic acid	0.04	-4.72	0.047	1.33

Table S8 Important fecal metabolites (n=22) identified in non-tuberculosis (NTB) subjects with respect to healthy controls from site-I. FC: fold change

Name	FC	log ₂ (FC:NTB/healthy)	raw.pval	-log ₁₀ (p)
Hydrocinnamic acid	19.61	4.29	0.033	1.49
N-acetylputrescine	15.78	3.98	0.036	1.44
Ala-Pro	14.70	3.88	0.032	1.50
N-(4-Bromo-2-fluoro-phenyl)-N'-(3-morpholin-4-yl-propyl)-oxalamide	10.77	3.43	0.034	1.47
Putrescine tetra-TMS	9.90	3.31	0.003	2.49
Metronidazole	7.60	2.93	0.018	1.74
Methylmalonic acid	7.43	2.89	0.018	1.74
4-Ketoglucose	6.44	2.69	0.005	2.32
α-Alanine	3.91	1.97	0.026	1.59
Cadaverine	3.81	1.93	0.001	2.92
Ornithine	3.59	1.85	0.004	2.41
DL-Ornithine	3.21	1.68	0.049	1.31
Propanoic acid	2.62	1.39	0.027	1.57
L-Tyrosine	2.17	1.12	0.031	1.50
Valeric acid	0.28	-1.86	0.014	1.85
Dihydrocinnamic acid	0.24	-2.05	0.003	2.58
N-acetyl-L-Aspartic acid	0.18	-2.46	0.019	1.72
2-Bromosebacic acid	0.17	-2.54	0.025	1.60
Succinic acid	0.11	-3.21	0.037	1.43
Hexanedioic acid	0.10	-3.29	0.032	1.50
n-Butylamine	0.07	-3.86	0.039	1.41
KGDS/1	0.02	-5.34	0.003	2.47

Table S9 Important fecal metabolites (n= 25) identified in tuberculosis patients (ATB) from site-II study populations. FC: fold change

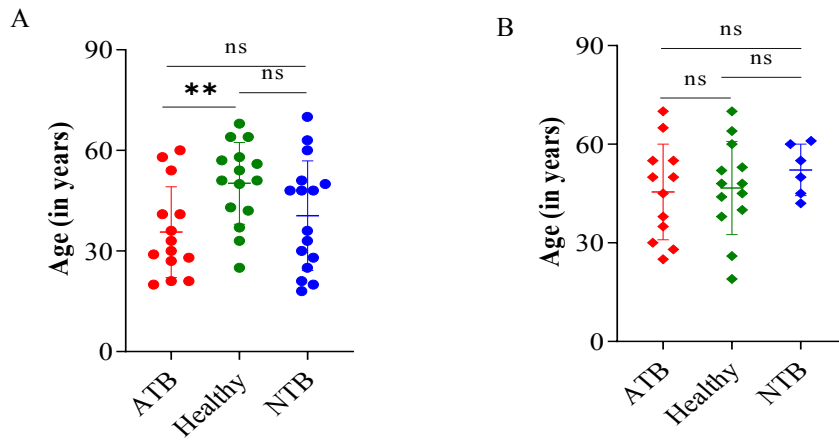
Name	FC	log ₂ (FC:ATB/healthy)	raw.pval	-log ₁₀ (p)
proline	84.41	6.40	0.023	1.64
Furethidine	68.32	6.09	0.049	1.31
Putreanine	47.81	5.58	0.027	1.57
n-Propyl acetate	36.65	5.20	0.008	2.10
Hydroxymalonic acid	35.56	5.15	0.012	1.91
2-Piperidinone	31.27	4.97	0.009	2.04
Citrulline	26.86	4.75	0.017	1.77
1-Amino-4-methylpiperazine	22.63	4.50	7.47E-04	3.13
Acryl glycine	19.74	4.30	0.035	1.45
Glutaric acid	19.64	4.30	0.044	1.36
Pyrazine	13.34	3.74	0.001	2.98
N-ethoxycarbonyl-D-Alanine,	10.67	3.42	0.049	1.31
1,2,3-Trimethoxycyclohexane	10.16	3.34	0.011	1.96
3-penten-2-one	9.93	3.31	4.29E-04	3.37
Tris(hydroxymethyl)aminomethane	7.66	2.94	4.45E-04	3.35
D-Arabinonic acid	7.43	2.89	0.036	1.45
Ornithine	6.43	2.69	0.021	1.67
2,3-2H-Quinolin-2-one	6.29	2.65	0.025	1.60
Pentanoic acid	6.14	2.62	0.013	1.89
4(equat)Ethyl-1-n-propyl-trans-decahydroquinol-4(axial)-ol	4.26	2.09	0.016	1.80
L-Cysteine	3.92	1.97	0.009	2.07
Serine	2.43	1.28	0.007	2.15
tetradecanoic acid	0.40	-1.33	0.025	1.60
Ribitol	0.03	-4.87	0.047	1.33
Heptanoic acid	0.03	-5.21	0.030	1.52

Table S10 Important fecal metabolites (n=23) identified in non-tuberculosis subjects (NTB) from site-II. FC: fold change

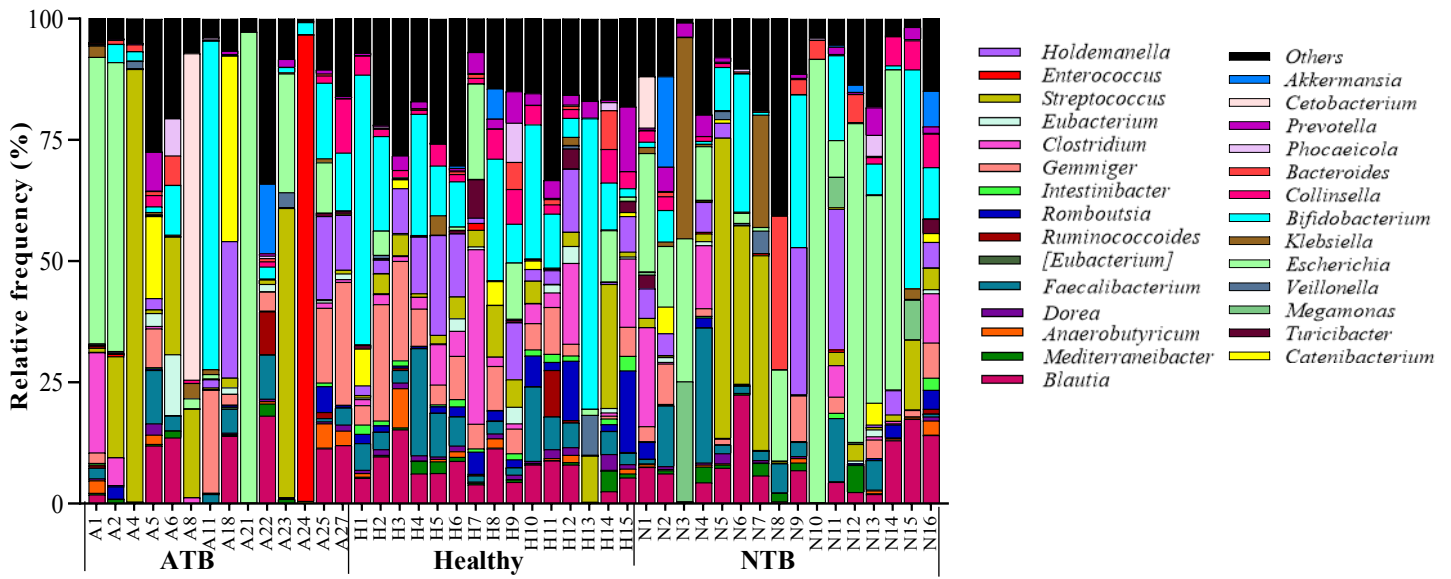
Name	FC	log ₂ (FC: NTB/healthy)	raw. pval	-log ₁₀ (p)
Acryl glycine	38.78	5.28	0.021	1.67
Propanetriol	27.38	4.77	0.038	1.42
3-penten-2-one	14.04	3.81	0.018	1.74
proline	13.58	3.76	0.003	2.52
Citrulline	13.14	3.72	0.014	1.86
n-Propyl acetate	10.94	3.45	0.023	1.64
d-2-Aminobutyric acid	9.16	3.20	0.013	1.89
Ornithine	8.80	3.14	0.014	1.85
Pyrazine	8.37	3.06	0.005	2.33
N-ethoxycarbonyl-D-Alanine,	6.98	2.80	0.043	1.37
L-Cysteine	6.32	2.66	0.015	1.83
Hypoxanthine	5.87	2.55	0.011	1.95
Pipecolic acid	5.82	2.54	0.011	1.94
Serine	5.77	2.53	0.019	1.72
1,2,3-Trimethoxycyclohexane	4.88	2.29	0.007	2.14
L-Valine	4.70	2.23	0.009	2.03
l-Isoleucine	4.10	2.04	0.010	2.01
Thiazole, 2-hydroxy-4-methyl-5-(a-chloroethyl)-	4.06	2.02	0.007	2.18
l-Aspartic acid	4.04	2.01	0.010	2.02
L-Methionine	3.20	1.68	0.050	1.30
Acetic acid, 2-oxa-7-thia-tricyclo[4.3.1.0(3,8)]dec-10-yl ester	3.07	1.62	0.003	2.47
DL-Phenylalanine	2.64	1.40	0.036	1.45
benzilate	0.16	-2.63	0.044	1.35

Table S11 Important fecal metabolites (n=8) identified in active tuberculosis patients (ATB) compared to non-tuberculosis (NTB) subjects from site II. FC: fold change

Name	FC	log ₂ (FC:ATB/NTB)	raw.pval	-log ₁₀ (p)
1-Amino-4-methylpiperazine	22.63	4.50	0.020	1.70
Tris(hydroxymethyl)aminomethane	7.66	2.94	0.015	1.83
tetradecanoic acid	0.46	-1.11	0.036	1.45
L-Norvalin	0.38	-1.41	0.027	1.56
Acetic acid, 2-oxa-7-thia-tricyclo[4.3.1.0(3,8)]dec-10-yl ester/ Acetic acid, 2O-7TC-dec-10-yl ester	0.33	-1.62	0.007	2.14
4-Ketoglucose	0.29	-1.77	0.009	2.05
Thiazole, 2-hydroxy-4-methyl-5-(a-chloroethyl)-	0.25	-2.02	0.013	1.90
Hypoxanthine	0.17	-2.55	0.020	1.70



A



B

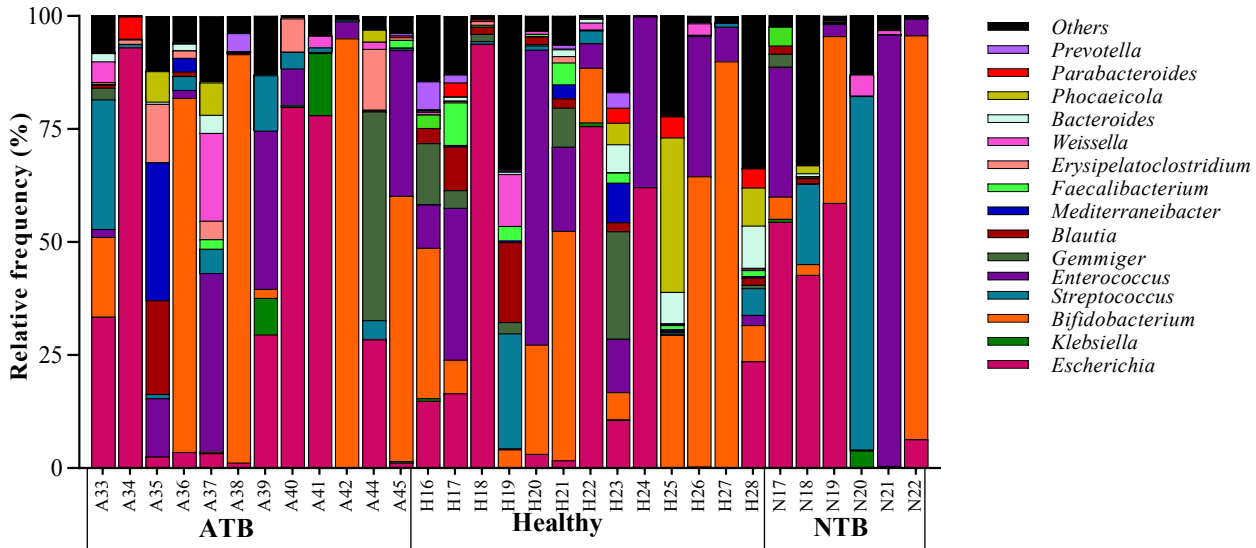


Figure S2 Stacked bar plots showing the relative abundance of microbiota distribution in active tuberculosis patients (ATB), healthy and non-tuberculosis (NTB) subjects of A) site-I and B) site-II, with taxonomic features collapsed at the level of genus. Genus that remained unclassified or with lesser abundance are grouped as Others.

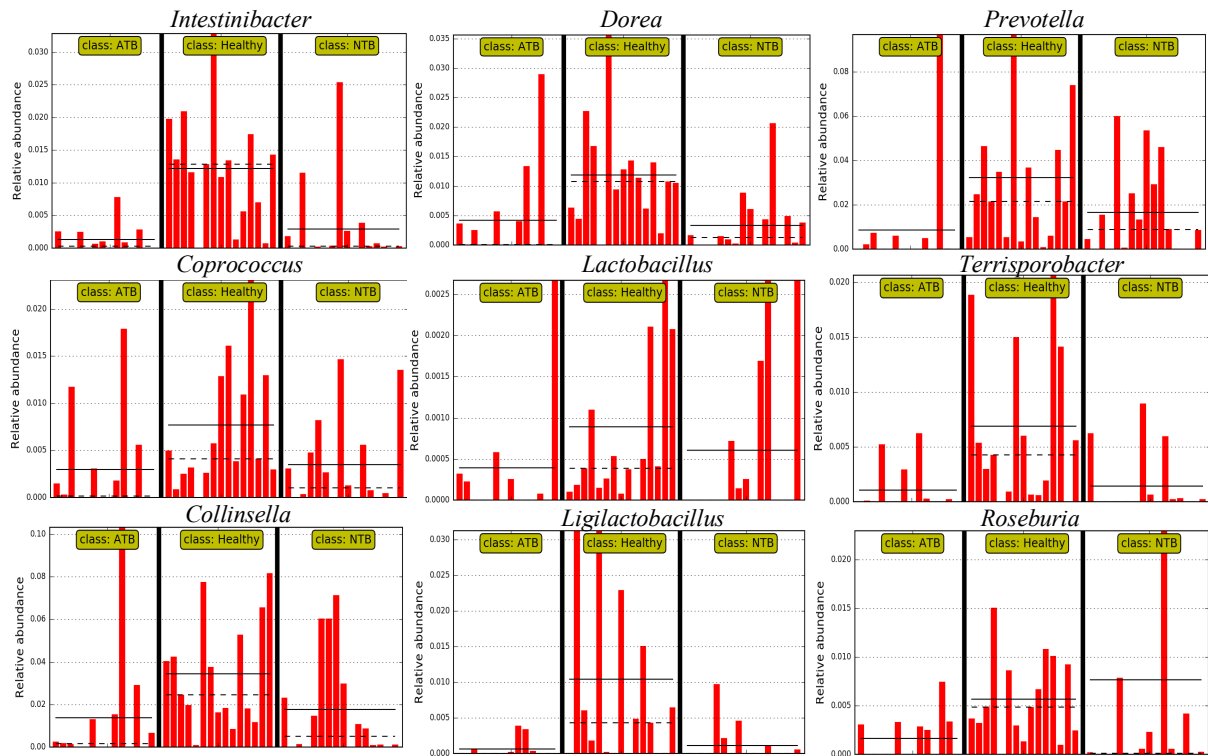


Figure S3 LEfSe analysis of active tuberculosis patients (ATB), non-tuberculosis (NTB) and healthy subjects of site-I based on effect size (LDA score [\log_{10}] threshold of 2). Differences among study groups were obtained by the Kruskal-Wallis test ($\alpha = 0.05$) and Wilcoxon test ($\alpha = 0.05$) with less strict parameter for multi-class analysis. The mean and median relative abundance of the genus are indicated with solid and dashed lines, respectively.

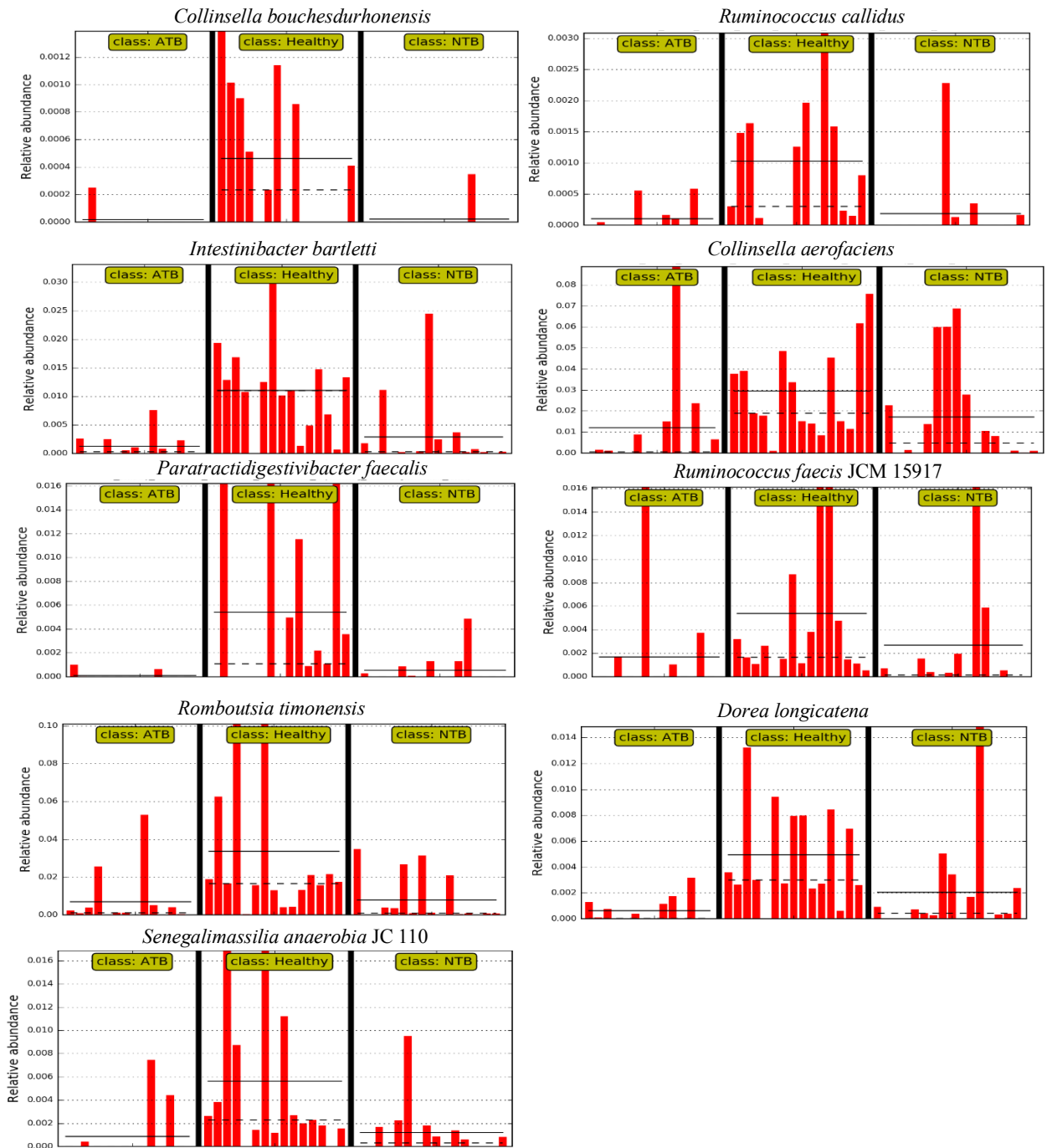


Figure S4 Histogram showing the relative abundances of identified species in drug naïve tuberculosis patients (ATB), and controls (healthy and non-tuberculosis: NTB) of site-I by LEfSe analysis. The mean and median relative abundance of the genus are indicated with solid and dashed lines, respectively.

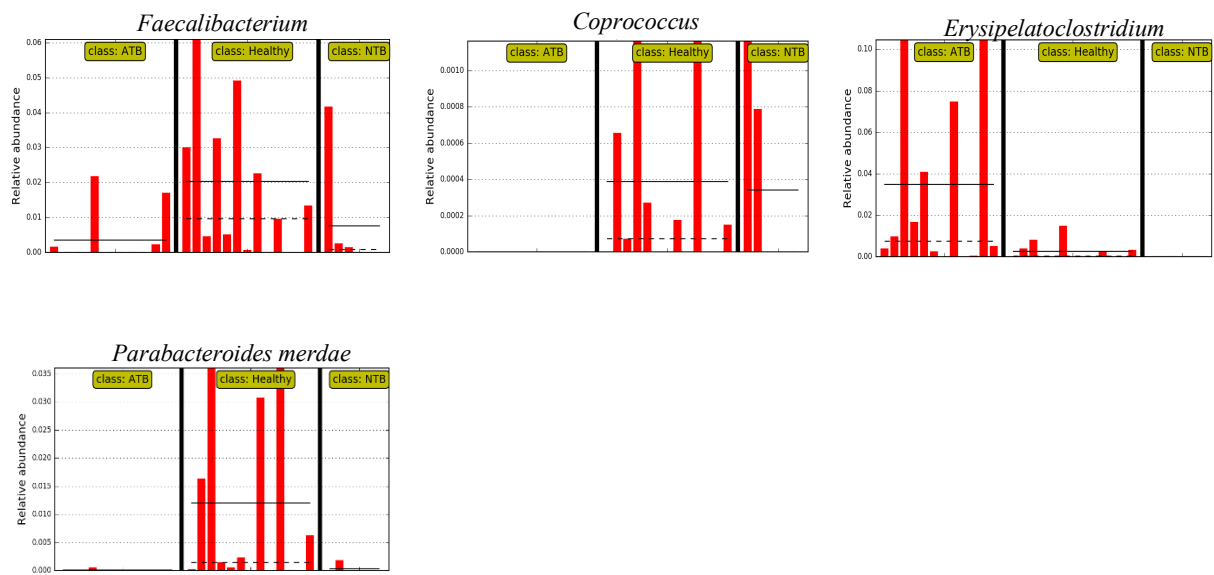


Figure S5 Histogram showing the relative abundances of identified species in drug naïve tuberculosis patients (ATB), and controls (healthy and non-tuberculosis: NTB) of site-II by LEfSe analysis. The mean and median relative abundance of the genus and species are indicated with solid and dashed lines, respectively.

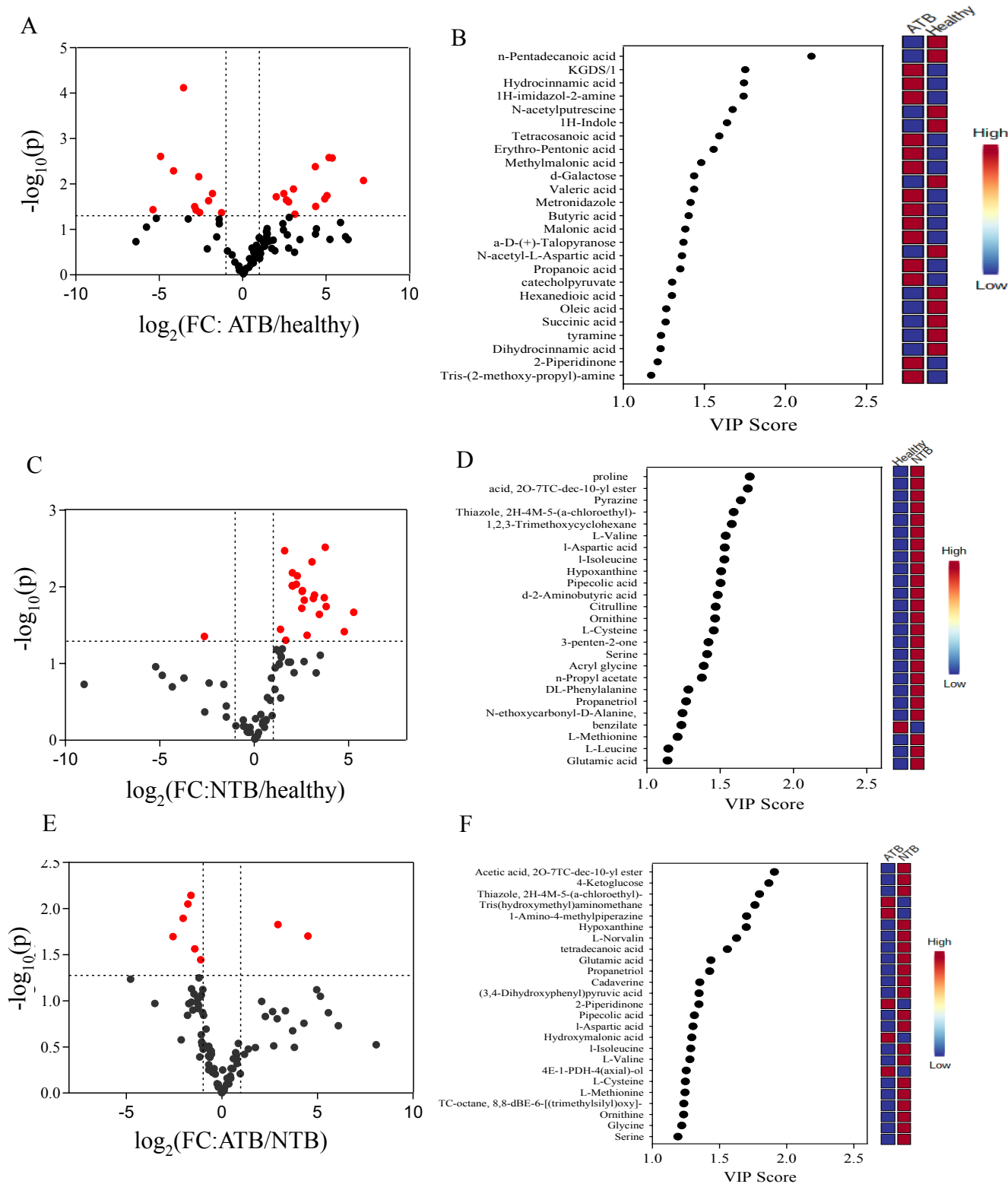


Figure S6 Fecal metabolite analysis of study groups to identify important deregulated molecules from site-I. Volcano plots of A) ATB vs healthy (low/high: 11/13) C) NTB vs healthy (low/high: 8/14) E) ATB vs NTB (low/high: 11/3). Red dots indicate features that presented both a FC ≥ 2 and p-value ≤ 0.05 . Important fecal metabolites (the top 25) qualifying VIP score > 1 between B) ATB vs healthy D) NTB vs healthy and F) ATB vs NTB. Coloured boxes on the right indicate the relative concentrations of the corresponding metabolite in each study group. N-(4-Bromo-2-fluoro-phenyl)-N'-(3-morpholin-4-yl-propyl)-oxalamide: N-4-BF-N'-3MP-oxalamide.

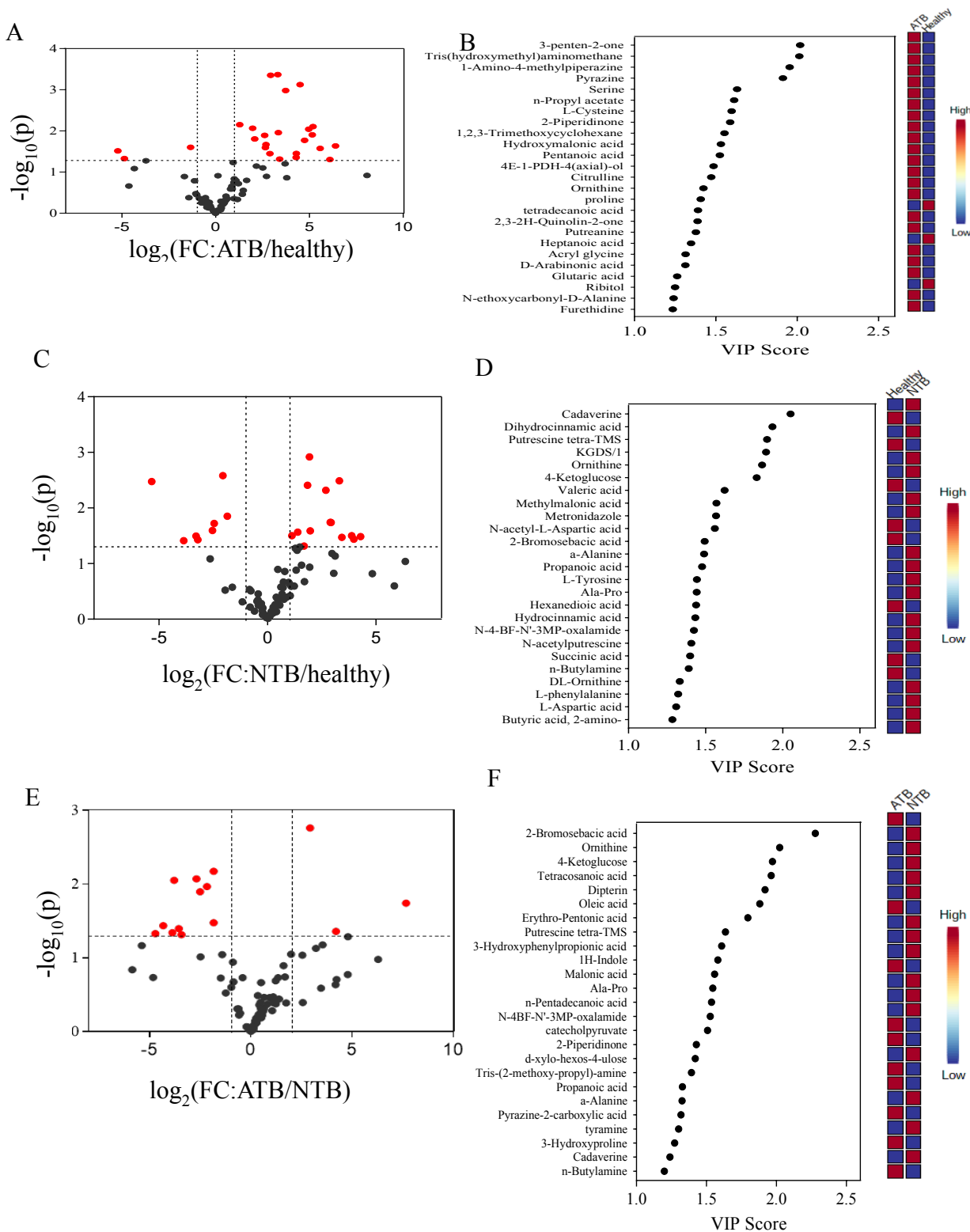


Figure S7 Fecal metabolite analysis of active tuberculosis patients (ATB), non-tuberculosis (NTB) and healthy subjects of site-II. Volcano plots of A) ATB vs healthy (low/high: 3/22) C) NTB vs healthy (low/high: 1/22) E) ATB vs NTB (low/high: 6/2). Red dots indicate features that presented both a FC ≥ 2 and p-value ≤ 0.05 . Rank of the different metabolites (the top 25) identified by the PLS-DA between B) ATB vs healthy D) NTB vs healthy F) ATB vs NTB, according to the VIP score on the x-axis. Coloured boxes on the right indicate the relative concentrations of the corresponding metabolite in each group. Thiazole, 2H-4M-5-(α-chloroethyl)-; Thiazole, 2-hydroxy-4-methyl-5-(α-chloroethyl)-; Acetic acid, 2O-7TC-dec-10-yl ester-; Acetic acid, 2-oxa-7-thiazotricyclo[4.3.1.0(3,8)]dec-10-ylester; TC-octane, 8,8-dBE-6-[(trimethylsilyl)oxy]-;

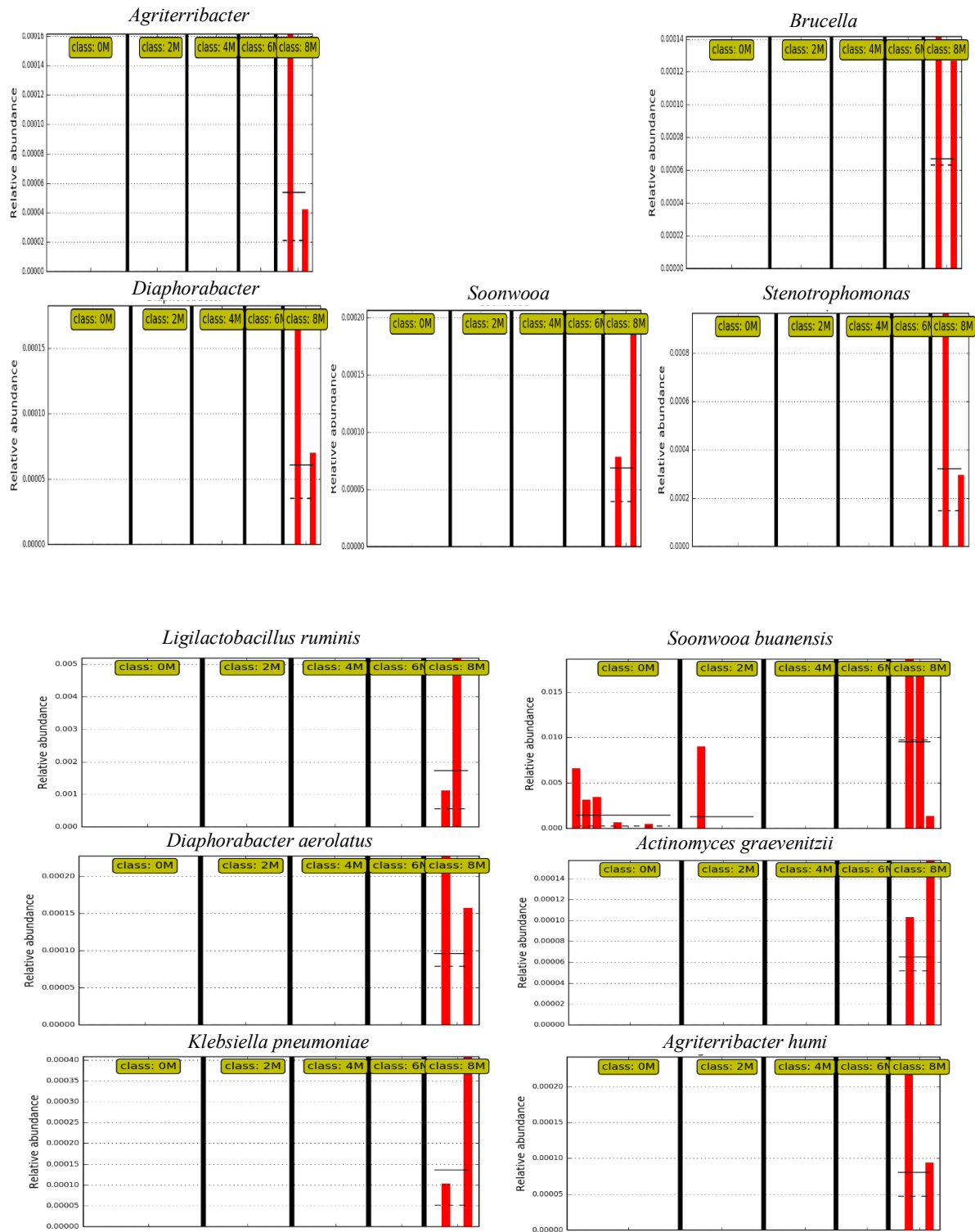


Figure S8 LEfSe analysis of drug-treated followed-up tuberculosis patient samples revealed differential species abundance. Histogram of the relative abundances of genus and species in 0, 2, 4, 6, and 8 month subjects. The mean and median relative abundance of the species are indicated with solid and dashed lines, respectively.

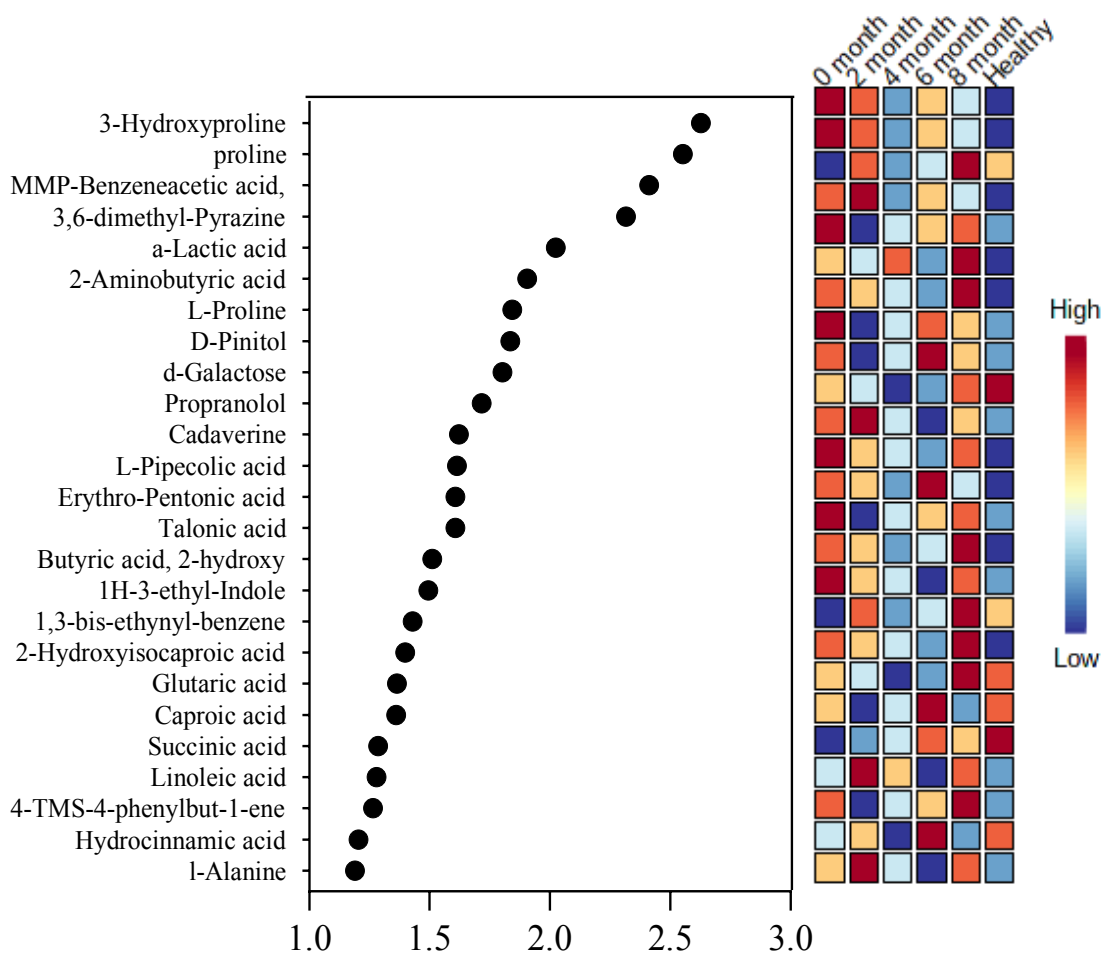


Figure S9 Multivariate analysis of fecal metabolome profile of followed up tuberculosis patients at different months of completing treatment (0/2/4/6/8) and healthy samples using Metaboanalyst 5.0. Rank of the different metabolites (the top 25) identified by the PLS-DA. Coloured boxes on the right indicate the relative concentrations of the corresponding metabolite in each group. *a*-methyl-4-(2-methylpropyl)-Benzeneacetic acid; MMP-Benzeneacetic acid; 1H-Indole, 1-(trimethylsilyl)-3-[2-[(trimethylsilyl)oxy]ethyl]-: 1H-3-ethyl-Indole ; 4-Trimethylsilyloxy-4-phenylbut-1-ene: 4-TMS-4-phenylbut-1-ene.

Supplemental Experimental Procedures

DNA extraction and 16SrRNA gene amplicon sequencing

Fecal samples (200 mg) were taken in a pre-chilled microcentrifuge tube (MCT, 1.5 ml). The samples were vortexed after adding TE buffer (200 μ l, 50 mM Tris-1mM EDTA, pH 8.0) and glass beads (4 in number, 2.7 mm, Biospec). Lysozyme (50 μ l, 10 mg/ml), mutanolysin (6 μ l, 2 KU/ml), and lysostaphin (3 μ l, 4 KU/ml) were added to the sample and incubated at 37° C for 1 hour (hr). To this reaction mixture, guanidinium thiocyanate (250 μ l, 4M) was added and mixed for 45 sec and subsequently incubated at 37° C for 10 minutes (min) at 300 rpm in Thermomixer C (Eppendorf) after mixing with N-lauryl sarcosine (300 μ l of 10 %).

After vortexing and a short spin of 16,000 g for a few seconds, samples were incubated at 70°C for 1 hr. Then, zirconia beads (300 mg of 0.1 mm, Biospec) were added, followed by bead beating in two cycles of 30 seconds (sec) each, with a total program time of 2 min using a bead beater (Mini bead beater 16, Biospec Products Inc. USA). After bead beating, PVPP (15 mg) was added and vortexed, followed by centrifugation at 16,000 g for 3 min. The supernatant was transferred to a fresh MCT, and the pellet was washed twice with 500 μ l of Tris (50 mM)-EDTA (20 mM)-NaCl (100 mM)-PVPP (1%), and the resulting supernatants were pooled. To the supernatant, isopropanol (2 ml) was added and incubated at room temperature for 10 min after inverting the tubes for a few min. The reaction mixture was centrifuged at 16,000 g for 10 min to harvest the pellet and dried at room temperature. To each sample, phosphate buffer: potassium acetate (9:1, 1 ml) was added and incubated overnight at -20°C. The thawed samples were centrifuged at 16,000 g for 30 min at 4°C. The supernatant was transferred to another tube, and RNase A (4 μ l, 10 mg/ml) was added before incubating at 37°C for 30 min. Then sodium acetate (50 μ l, 3M) was added to each tube, followed by ice-cold ethanol (1 ml, 96 %) and mixed by inverting the tubes for few times before incubating at room temperature for 5 min. These samples were then centrifuged at 16,000 g for 15 min at 4 °C, and after discarding the supernatant, the pellet was washed with ice-cold ethanol (70%). The dried pellet was resuspended in Tris (10 mM)-EDTA (1 mM) buffer (pH 8.0, 200 μ l), and harvested genomic DNA was quantified using a Qubit 3.0 fluorometer (Invitrogen, USA).

Extracted genomic DNA was sent to Macrogen, South Korea, for library preparation and sequencing. The libraries were prepared following the Illumina 16S Metagenomic Sequencing Library protocols after amplifying the V3-V4 region of the 16S rRNA gene. The input gDNA (2 ng) was Polymerase Chain Reaction (PCR) amplified with 5X reaction buffer, dNTP mix (1 mM), the universal forward and reverse PCR primer (500 nM each), and Herculase II fusion

DNA polymerase (Agilent Technologies, Santa Clara, CA). The cycle condition for 1st PCR was 3 min at 95 °C for heat activation, and 25 cycles of 30 sec at 95 °C, 30 sec at 55 °C, and 30 sec at 72 °C, followed by a 5 min final extension at 72 °C. The universal primer pair with Illumina adapter overhang sequences used for the first amplification were as follows: V3-F: 5'-TCGTCGGCAGCGTCAGATGTGTATAAGAGACAGCCTACGGGNGGCWGCAG-3', V4-R: 5'-GTCTCGTGGGCTCGGAGATGTGTATAAGAGACAGGACTACHVGGGTATCTAATCC-3. The 1st PCR product was purified with AMPure beads (Agencourt Bioscience, Beverly, MA). Following purification, the 1st PCR product (2 µl) was amplified for final library construction containing the index using NexteraXT Indexed Primer. The cycle condition for the 2nd PCR was the same as the 1st, except it was expanded for 10 cycles. The PCR products were purified with AMPure beads. The final purified products were then quantified using qPCR following the qPCR Quantification Protocol Guide (KAPA Library Quantification kits for Illumina Sequencing platforms) and qualified using the TapeStation D1000 ScreenTape (Agilent Technologies, Waldbronn, Germany).

Derivatization of fecal metabolites

The fecal samples (n=94) were randomized before processing, and data acquisition was carried out in multiple batches of 8-12 samples per batch. To protect carbonyl groups and reduce the number of tautomeric isomers, methoxyamine (20 µl) in pyridine (30 mg/ml) was added to the dried fecal metabolites, followed by vortexing for 30 sec and incubation at 37 °C with generous shaking (1000 rpm) for 90 min. The sample vials were inverted once to capture any solvent condensation at the cap surface, followed by a short spin. To derivatize hydroxyl and amine groups of the extracted fecal metabolites to trimethylsilylated (TMS) forms, N-methyl-N-(trimethylsilyl) trifluoroacetamide (MSTFA; 80 µl) with trimethylchlorosilane (1%, TMCS) were added, followed by vortexing for 10 sec and incubation at 37 °C with shaking (1000 rpm) for 30 min. After derivatization, samples were centrifuged at 10,000 g for 5 min, and the supernatant was transferred to a 200 µl glass vial insert in a 2 ml vial. The derivatized fecal metabolites were brought to room temperature, and mass spectrometry data acquisition was carried out within 24 h of derivatization. An equal volume of extracted fecal metabolites of all samples was pooled to prepare a quality control (QC) sample. Aliquots (300 µl each) of the QC were used for derivatization using the same procedure, and at least three QC samples were run in each batch.