

Supporting Information

Obesity Differs from Diabetes Mellitus in Antibody and T Cell Responses Post COVID-19 Recovery

Mohammad Ali(1,2,3,4), Stephanie Longet(5), Isabel Neale(1,2,3), Patpong Rongkard(1,2,3), Forhad Uddin Hassan Chowdhury(6), Jennifer Hill(1,2,3), Anthony Brown(1), Stephen Laidlaw(5), Tom Tipton(5), Ashraful Hoque(7), Nazia Hassan(8), Carl-Philipp Hackstein(1,9), Sandra Adele(1,2,3), Hossain Delowar Akther (1,9), Priyanka Abraham(1,2,3), Shrebash Paul(8), Md Matiur Rahman(10), Md Masum Alam(10), Shamima Parvin(11), Forhadul Hoque Mollah(10), Md Mozammel Hoque(10), Shona C Moore(12), Subrata K Biswas(10, 14), Lance Turtle(12), Thushan I de Silva(13), Ane Ogbe(1), John Frater(1), Eleanor Barnes(1,2,15), Adriana Tomic (16, 17, 18), Miles W Carroll(5), Paul Klenerman(1,2,9,15), Barbara Kronsteiner(1,2,3), Fazle Rabbi Chowdhury(3,8), Susanna J Dunachie(1,2,3,15)

[1] Peter Medawar Building for Pathogen Research, Nuffield Department of Clinical Medicine, University of Oxford, Oxford, UK

[2] Centre for Global Health Research, Nuffield Department of Clinical Medicine, University of Oxford, Oxford, UK

[3] Mahidol-Oxford Tropical Medicine Research Unit, Mahidol University, Bangkok, Thailand

[4] Directorate General of Health Services, Dhaka, Bangladesh

[5] Wellcome Centre for Human Genetics, Nuffield Department of Medicine, University of Oxford, Oxford, UK

[6] Department of Internal Medicine, Dhaka Medical College, Dhaka, Bangladesh

[7] Department of Transfusion Medicine, Sheikh Hasina National Burn & Plastics Surgery Institute, Dhaka, Bangladesh

[8] Department of Internal Medicine, Bangabandhu Sheikh Mujib Medical University, Dhaka, Bangladesh

[9] Translational Gastroenterology Unit, Nuffield Department of Clinical Medicine, University of Oxford, Oxford, UK

[10] Department of Biochemistry and Molecular Biology, Bangabandhu Sheikh Mujib Medical University, Dhaka, Bangladesh

[11] Department of Biochemistry and Molecular Biology, Mugda Medical College, Dhaka, Bangladesh

[12] Tropical and Infectious Disease Unit, Liverpool University Hospitals NHS Foundation Trust, Member of Liverpool Health Partners, Liverpool, UK

[13] Department of Infection, Immunity and Cardiovascular Disease, University of Sheffield, Sheffield, UK

[14] Department of Molecular and Cell Biology, University of Connecticut, Storrs, Connecticut, USA

[15] NIHR Oxford Biomedical Research Centre, Oxford University Hospitals NHS Foundation Trust, Oxford, UK

[16] National Emerging Infectious Diseases Laboratories, Boston University, USA

[17] Department of Microbiology, Boston University School of Medicine, USA

[18] Department of Biomedical Engineering, Boston University, Boston, MA, USA

Contact Info:

Susanna Dunachie, Peter Medawar Building for Pathogen Research, University of Oxford, OX1 3SY, Oxford, UK. Email: susie.dunachie@ndm.ox.ac.uk

Viral Proteins recognised by T cells

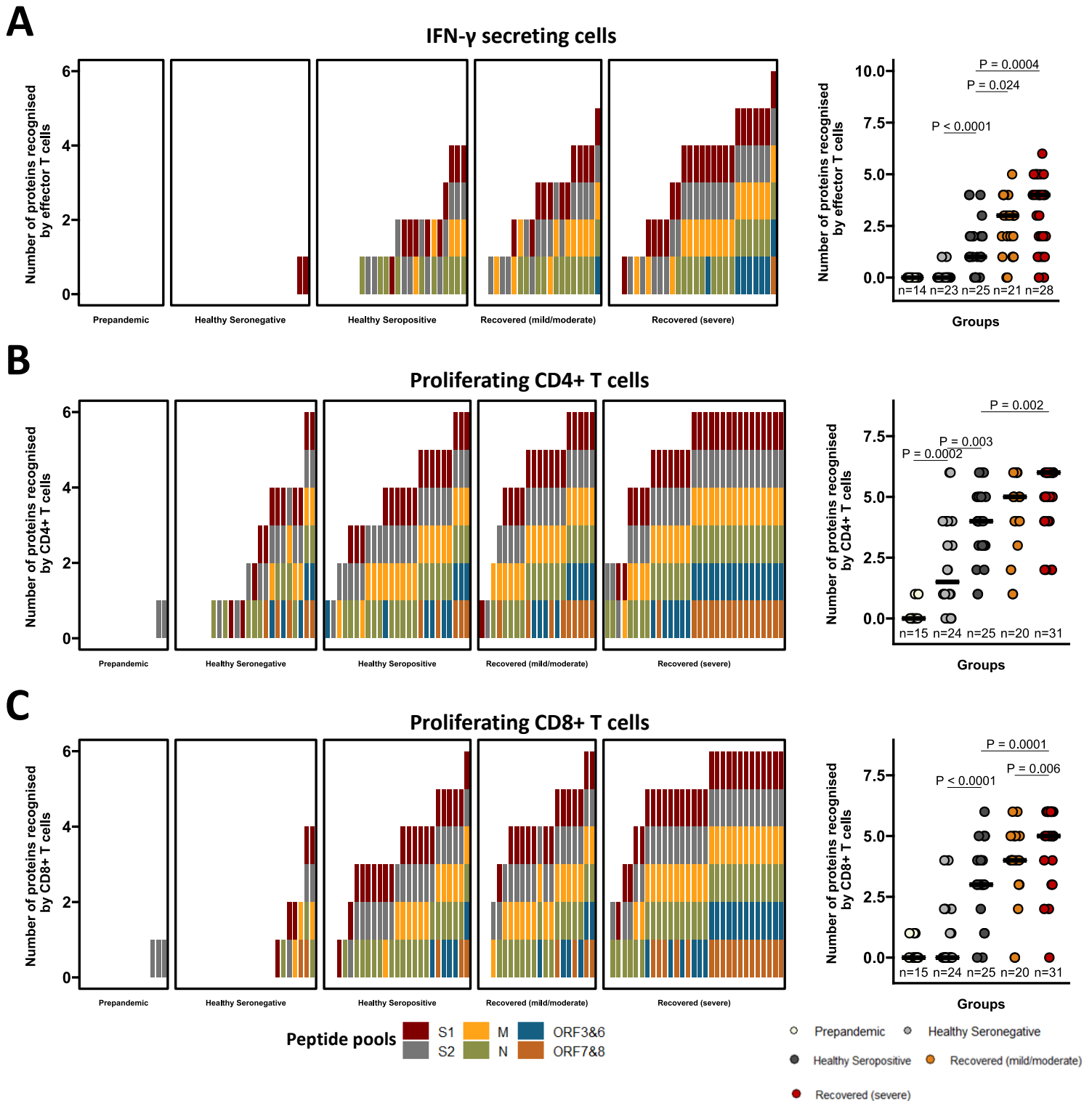
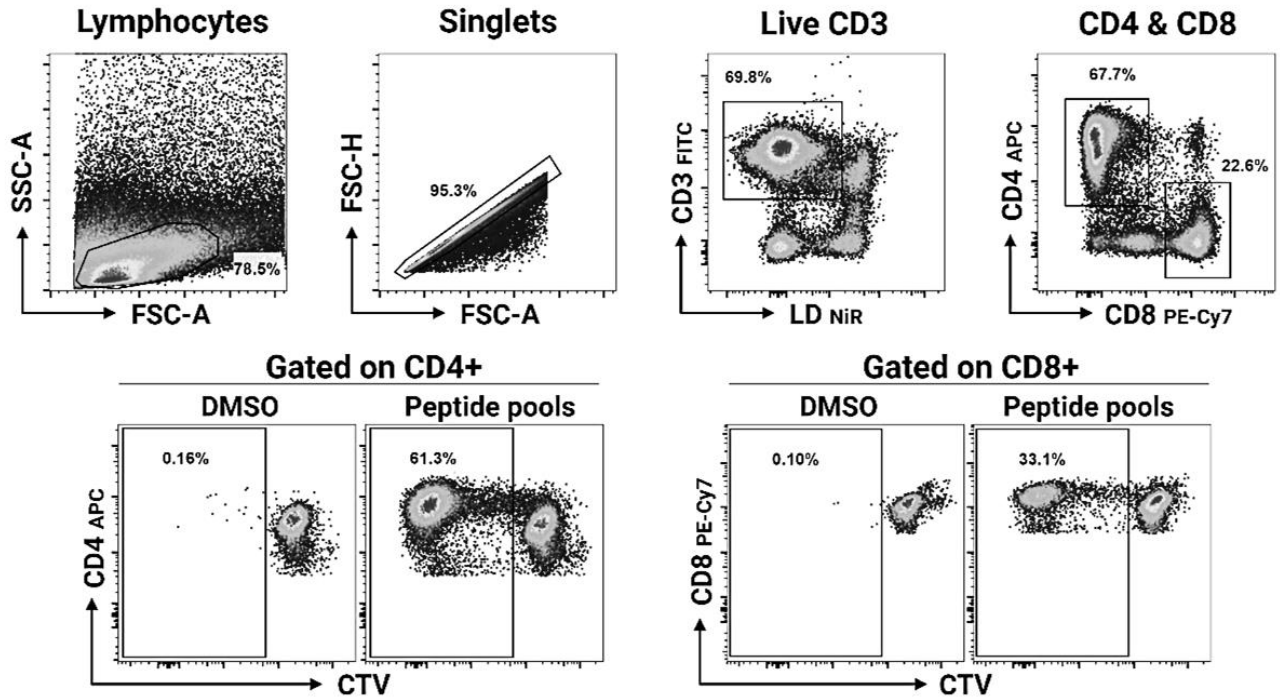


Figure S1: The breadth of T cell responses to SARS-CoV-2 was higher in patients who recovered from severe COVID-19.

Barplots on the left display the number of viral proteins recognised in individuals across groups (coloured by specificity) by (A) ex vivo IFN- γ ELISpot assay, (B) CD4+ T cell proliferation, (C) CD8+ T cell proliferation. Dot plots on the right show the comparison of the number of viral proteins recognised among groups by corresponding assays.

A two-tailed Wilcoxon rank-sum test was used to compare between the groups (without correction for multiple testing), p values are shown on the top of the dot plots. The number of individuals (n) evaluated per assay is displayed at the bottom of the corresponding dot plots, while horizontal bars represent the medians.

A Gating strategy for T cell proliferation



B Gating strategy for antigen-specific T cell cytokine secretion (ICS)

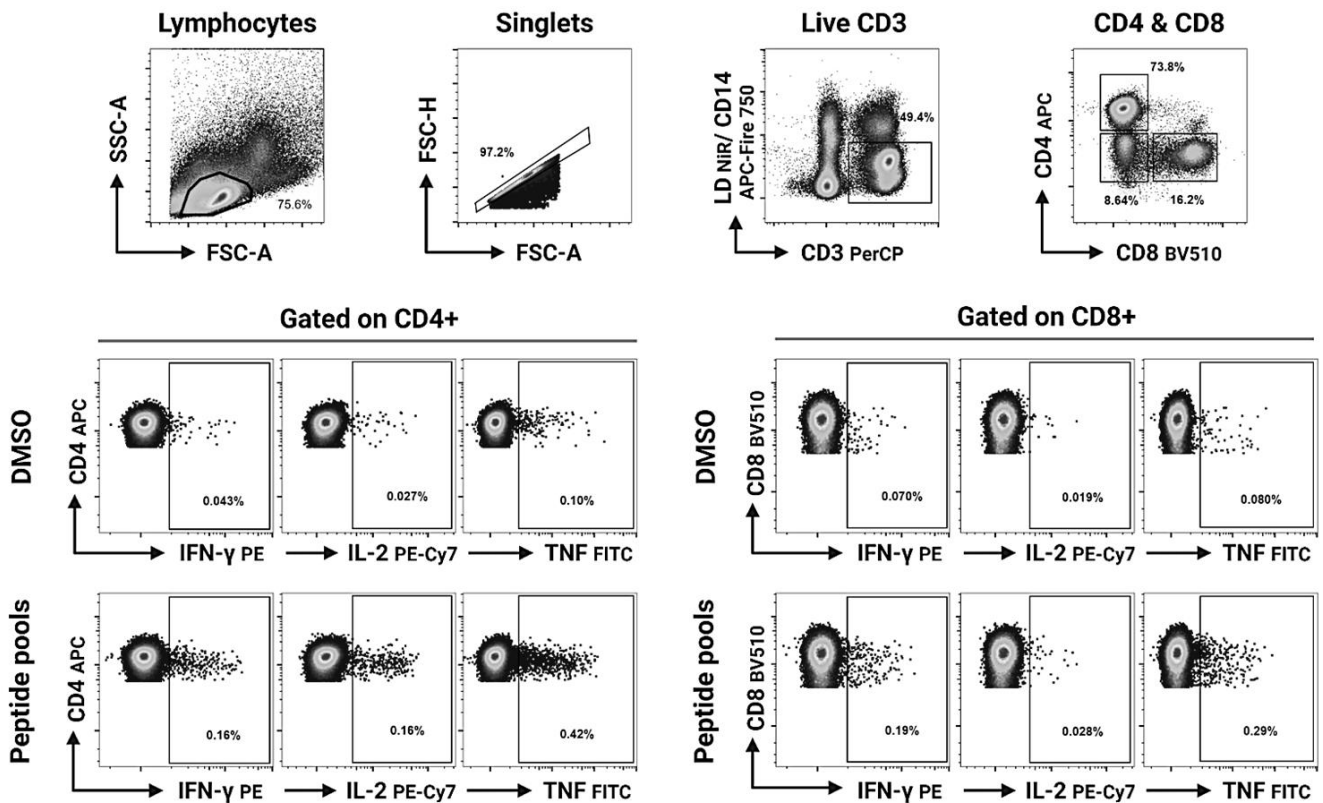


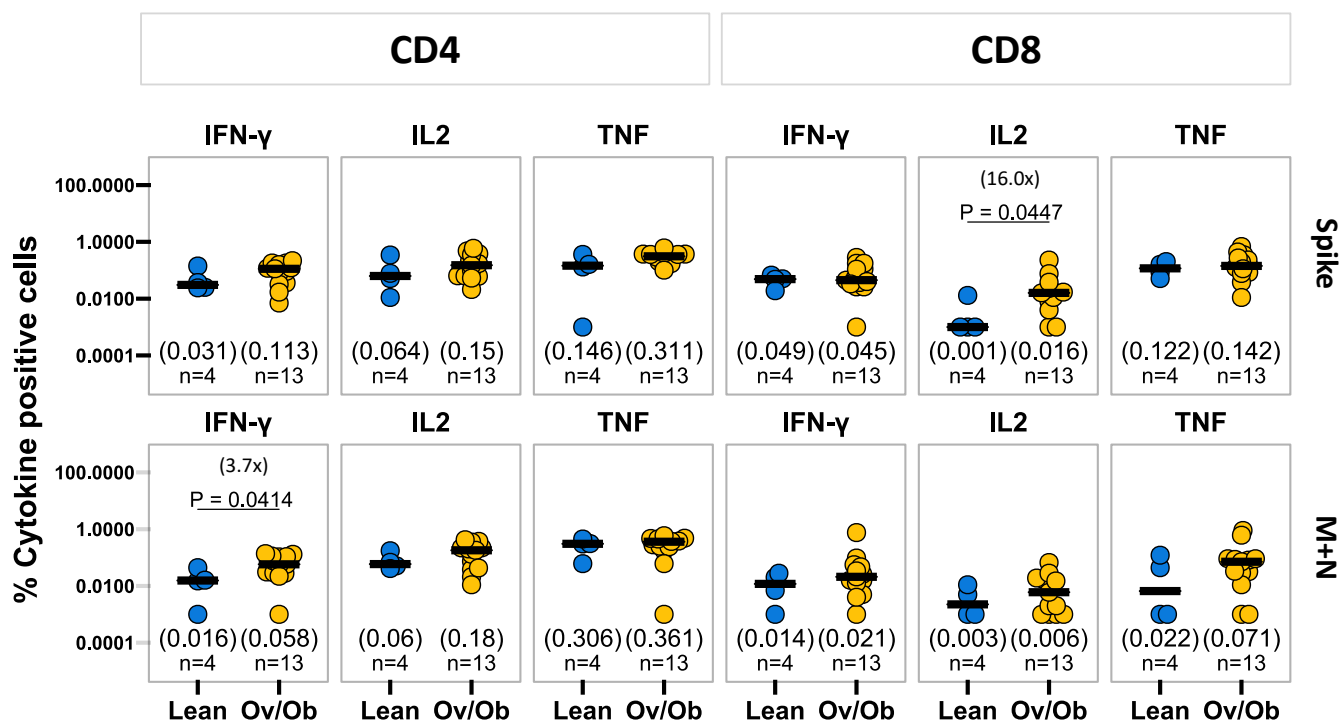
Figure S2: Gating strategy for T cell proliferation and intracellular cytokine staining (ICS).

(A) For T cell proliferation assays, lymphocytes were gated using forward and side scatter area (FSC-A and SSC-A) parameters, followed by single cell gating on FSC-height (H) and area (A). Live T cells were then gated (LD-NiR low CD3+) and T cell subsets were identified (CD4+CD8- and CD8+CD4-) using CD4+ APC and CD8+ PE-Cy7. Within the CD4+ and the CD8+ T cell gate proliferating cells were identified by gating on cells with reduced CTV (CellTrace™ Violet) fluorescence intensity.

(B) For ICS assays lymphocytes were gated using forward and side scatter area (FSC-A and SSC-A) parameters, followed by single cell gating on FSC-height (H) and area (A). Live CD3+ T cells were gated based on exclusion of dead cells (LD-NiR) and monocytes (CD14 APC Fire-750) as well as positivity for CD3 PerCP. T cell subsets were identified based on staining for CD4 APC and CD8 BV510 respectively and expression of cytokines (IFN- γ , TNF, IL-2) was then identified in the CD4+CD8- gate as well as the CD8+CD4- gate. Representative gating is shown for the DMSO negative control and the reactive peptide pools.

A

Antigen-specific T cells: Lean vs Overweight/Obese



B

Antigen-specific T cells: Non-DM vs DM

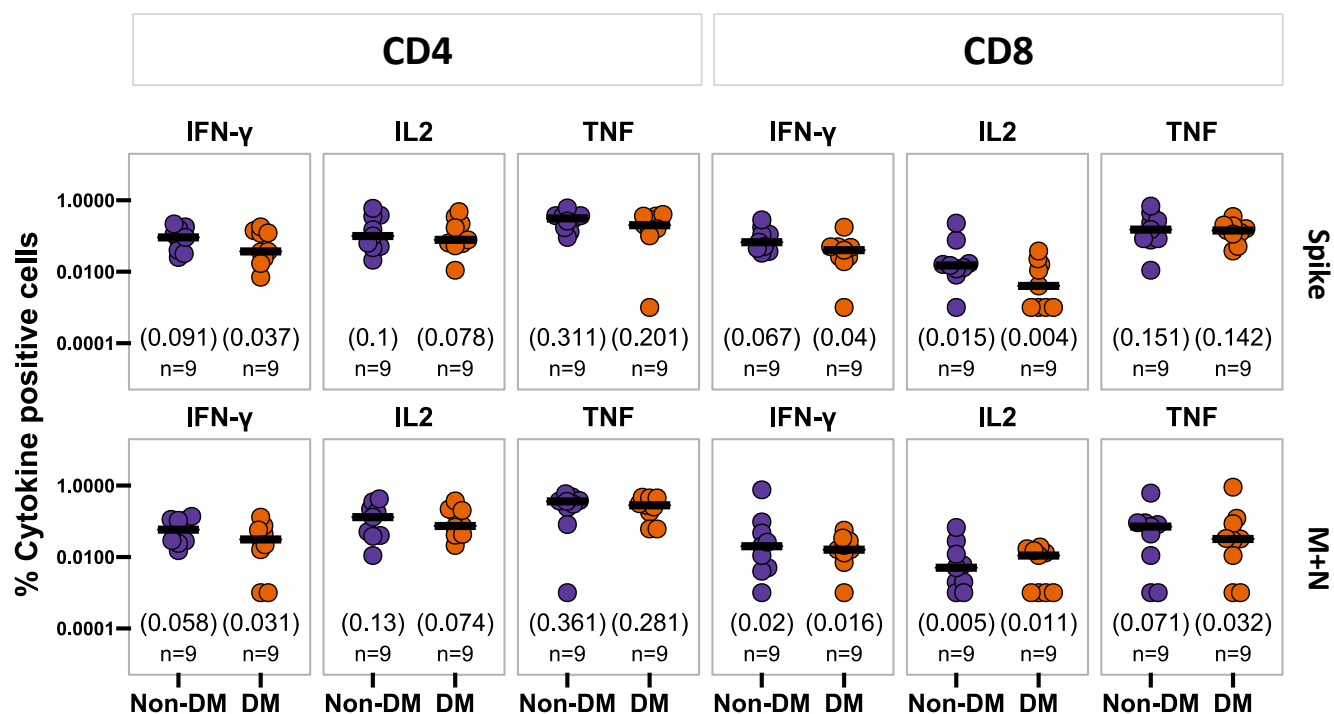
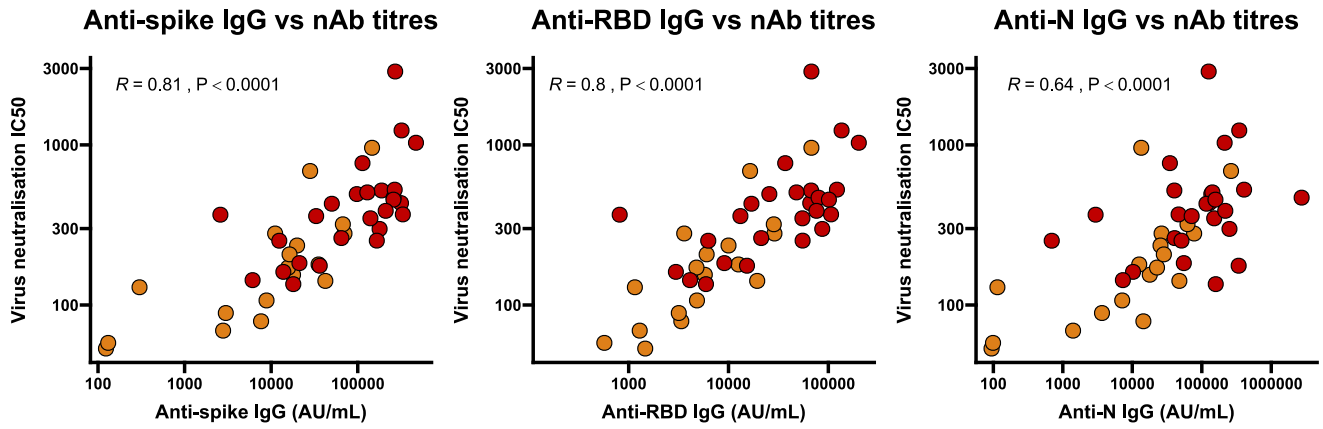


Figure S3: Overweight/obese status is associated with increased T cell cytokine responses to SARS-CoV-2 after recovery, but the cytokine responses are similar between diabetic and non-diabetic recovered patients.

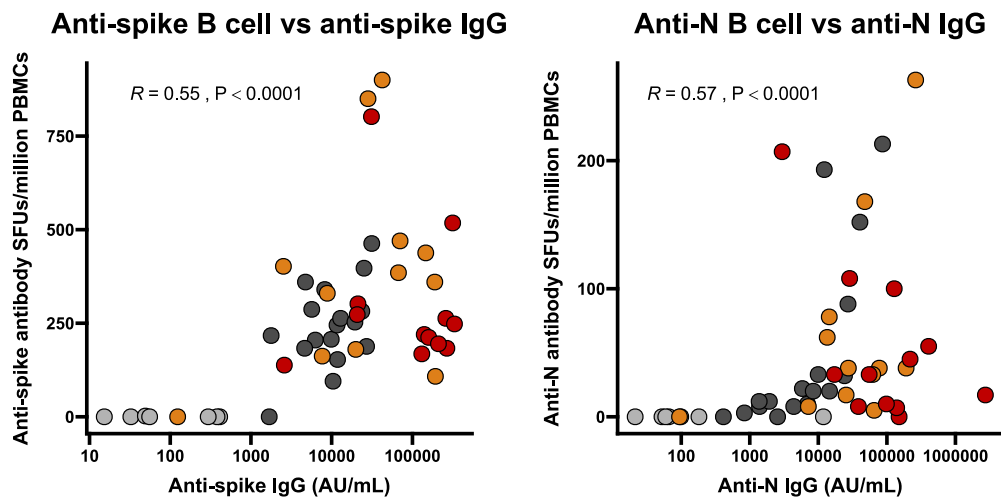
Comparison of cytokine responses (IFN- γ , IL-2 and TNF) by CD4⁺ and CD8⁺ T cells in response to SARS-CoV2 spike (top panel) and M+N pools (bottom panel) between (A) lean and overweight/obese (Ov/Ob), (B) non-diabetic (Non-DM) and diabetic (DM) recovered COVID-19 patients.

A two-tailed Wilcoxon rank-sum test was used to compare between the groups (without correction for multiple testing), with fold changes in brackets. P values are displayed in case of significant differences. The number of individuals (n) evaluated per assay is displayed at the bottom of the corresponding dot plots. Horizontal bars represent the medians, and the median values are shown in brackets immediately above the number of individuals (n) in each column.

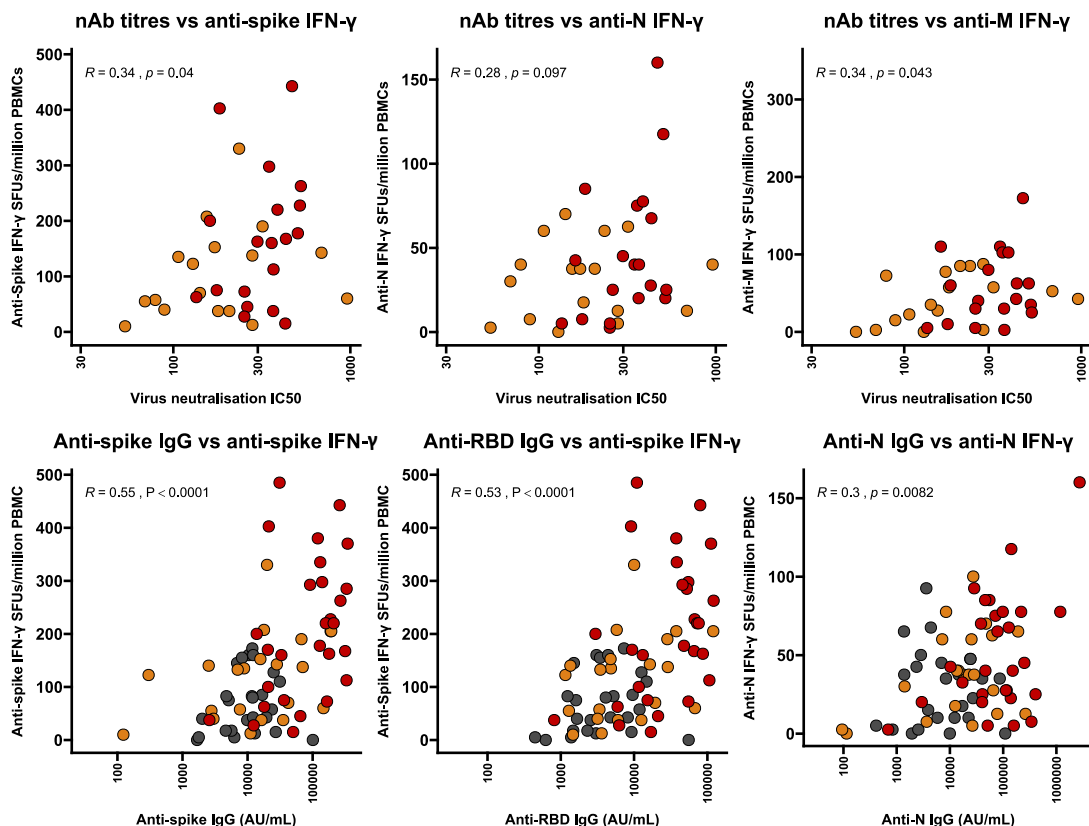
A Correlation between IgG and neutralising antibodies



B Correlation between IgG and memory B cells



C Correlation between T cell IFN- γ and antibodies



○ Healthy Seronegative ● Healthy Seropositive ● Recovered (mild/moderate) ● Recovered (severe)

Figure S4: Correlation between antibody, B cell and T cell responses to SARS-CoV-2.

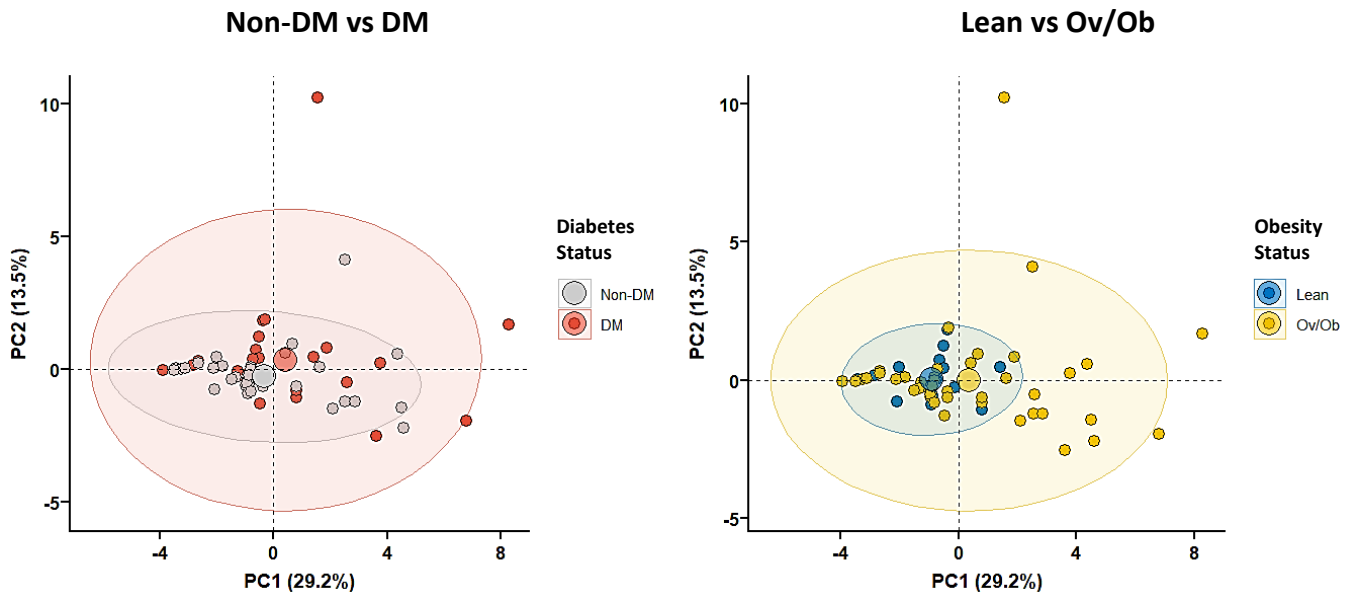
(A) Correlation of neutralising antibody (nAb) titers with IgG responses to SARS-CoV-2 spike, receptor binding domain (RBD), and nucleoprotein (N) in recovered COVID-19 patients.

(B) Correlation between IgG and memory B cell responses to SARS-CoV-2 spike (left) and N (right) in healthy seronegative and seropositive controls and recovered patients.

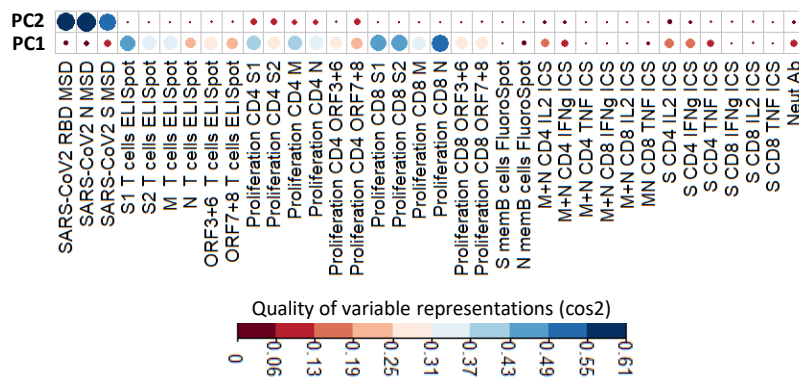
(C) Correlation of IFN- γ ELISpot responses with IgG and nAb titers in healthy seropositive controls and recovered patients.

Spearman's correlation coefficient (R) and p-values are shown at the top of each plot.

A Principal component analysis



B Contributions of variables to principal components



C Top 10 variables

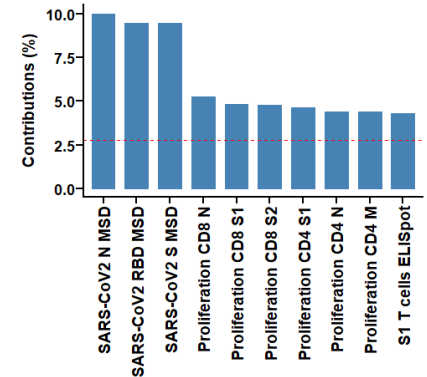


Figure S5: Principal component analysis with integrated immunological data in recovered COVID-19 patients.

(A) PCA plot representing integrated immunological data, grouped based on the diabetes (left) and obesity (right) status. Percentage indicates the variance explained by the principal component (PC).

(B) Quality of variable representations (colour-coded, \cos^2) and contributions of variables to principal components 1 and 2 (size of the circle).

(C) Top 10 variables and their contribution to PC 1 and 2.

Table S1a: Demographic characteristics of recovered participants with or without obesity.

Variable	Normal weight (N = 20)	Overweight/obesity (N = 52)	p-value
Age in years, median (IQR[#])	55 (43, 61)	43 (34, 53)	0.020 ^a
Sex			>0.9 ^b
Female, n (%)	3 (15%)	8 (15%)	
Male, n (%)	17 (85%)	44 (85%)	
Diabetes status			0.082 ^b
Non-diabetic, n (%)	9 (45%)	35 (67%)	
Diabetic, n (%)	11 (55%)	17 (33%)	
Disease severity			>0.9 ^b
Mild/moderate, n (%)	6 (30%)	22 (42%)	
Severe, n (%)	14 (70%)	30 (58%)	
Days post symptom onset, median (IQR[#])	54 (36, 110)	59 (38, 100)	>0.9 ^a
[#] IQR (Interquartile range) ^a Wilcoxon rank sum test; ^b Pearson's Chi-squared test			

Table S1b: Demographic characteristics of recovered participants with or without diabetes.

Variable	Non-diabetic (N = 46)	Diabetic (N = 29)	p-value
Age in years, median (IQR#)	40 (31, 51)	53 (45, 63)	<0.001 ^a
Sex			>0.9 ^b
Female, n (%)	7 (15%)	4 (14%)	
Male, n (%)	39 (85%)	25 (86%)	
Obesity category			0.21 ^b
Normal weight, n (%)	9 (20%)	11 (38%)	
Overweight/obesity, n (%)	35 (76%)	17 (59%)	
Data missing, n (%)	2 (4%)	1 (3%)	
Disease severity			0.027 ^b
Mild/moderate, n (%)	24 (52%)	7 (24%)	
Severe, n (%)	22 (48%)	22 (76%)	
Days post symptom onset, median (IQR#)	69 (33, 120)	52 (40, 70)	0.3 ^a
#IQR (Interquartile range) ^a Wilcoxon rank sum test; ^b Pearson's Chi-squared test			

Table S2a. Generalised linear regression models of antibody (IgG, neutralising Ab) and memory B cell responses in SARS-CoV-2 recovered patients

Coefficient	Anti-spike IgG			Anti-RBD IgG			Anti-N IgG			Neutralising antibody			Anti-spike memory B cells			Anti-N memory B cells		
	Est	SE	p value	Est	SE	p value	Est	SE	p value	Est	SE	p value	Est	SE	p value	Est	SE	p value
Age	0.2615	0.1316	0.0512	0.2219	0.1319	0.0974	0.1134	0.1421	0.4278	0.2088	0.1794	0.2518	0.2054	0.2667	0.4523	0.1126	0.2476	0.6553
Sex (male)	-0.2075	0.2742	0.4519	-0.1770	0.2748	0.5219	-0.1592	0.2960	0.5925	-0.1880	0.3405	0.5843	0.2552	0.5673	0.6589	-0.0994	0.5266	0.8526
DM (yes)	0.1133	0.2226	0.6126	0.1848	0.2231	0.4105	0.0159	0.2403	0.9474	-0.2130	0.3030	0.4864	-0.3309	0.4765	0.4973	0.0078	0.4423	0.9862
Obesity (yes)	0.1981	0.2264	0.3846	0.1861	0.2269	0.4152	0.3610	0.2444	0.1445	-0.7077	0.2788	0.0155	-0.2757	0.5925	0.6481	-0.6133	0.5501	0.2813
Disease Severity (severe)	0.7628	0.2464	0.0029	0.7212	0.2470	0.0048	0.8410	0.2660	0.0024	0.6099	0.3077	0.0549	0.1470	0.5161	0.7794	-0.0677	0.4791	0.8895
Days pso	-0.1537	0.1050	0.1482	-0.2229	0.1053	0.0381	-0.1740	0.1134	0.1296	-0.1988	0.1424	0.1711	0.2341	0.2735	0.4047	0.3316	0.2539	0.2100

Est (estimates), SE (standard error), pso (post symptom onset)

Table S2b. Generalised linear regression models of IFN- γ T cell ELISpot responses in SARS-CoV-2 recovered patients

Coefficient	S1 IFN- γ ELISpot			S2 IFN- γ ELISpot			M IFN- γ ELISpot			N IFN- γ ELISpot			ORF3+6 IFN- γ ELISpot			ORF7+8 IFN- γ ELISpot		
	Est	SE	p value	Est	SE	p value	Est	SE	p value	Est	SE	p value	Est	SE	p value	Est	SE	p value
Age	0.2439	0.1633	0.1430	0.3061	0.1728	0.0839	0.1504	0.1691	0.3788	0.1408	0.1752	0.4263	0.1169	0.1730	0.5031	0.1425	0.1779	0.4275
Sex (male)	-0.2320	0.3547	0.5168	0.0767	0.3752	0.8391	-0.2778	0.3672	0.4536	-0.2894	0.3806	0.4513	-0.3771	0.3758	0.3215	-0.0962	0.3863	0.8046
DM (yes)	0.2647	0.3047	0.3900	-0.1007	0.3223	0.7563	-0.0012	0.3154	0.9971	0.1480	0.3269	0.6532	-0.3354	0.3228	0.3049	-0.4161	0.3319	0.2170
Obesity (yes)	0.6928	0.3229	0.0379	0.4721	0.3416	0.1745	0.6411	0.3343	0.0621	0.5200	0.3465	0.1410	0.3884	0.3421	0.2628	-0.0978	0.3517	0.7823
Disease Severity (severe)	0.3741	0.3112	0.2362	0.2880	0.3292	0.3867	0.4061	0.3221	0.2145	0.2215	0.3339	0.5107	0.4818	0.3297	0.1515	0.4011	0.3389	0.2435
Days pso	-0.1033	0.1446	0.4791	0.0355	0.1530	0.8179	0.1950	0.1497	0.2001	0.2164	0.1552	0.1706	-0.1146	0.1532	0.4589	0.0359	0.1575	0.8207
Est (estimates), SE (standard error), pso (post symptom onset)																		

Table S2c. Generalised linear regression models of CD4 T cell proliferative responses in SARS-CoV-2 recovered patients

Coefficient	S1 CD4 proliferation			S2 CD4 proliferation			M CD4 proliferation			N CD4 proliferation			ORF3+6 CD4 proliferation			ORF7+8 CD4 proliferation		
	Est	SE	p value	Est	SE	p value	Est	SE	p value	Est	SE	p value	Est	SE	p value	Est	SE	p value
Age	0.2340	0.1598	0.1504	0.2142	0.1637	0.1978	0.0762	0.1660	0.6486	0.1505	0.1671	0.3727	0.3135	0.1580	0.0536	0.4431	0.1437	0.0036
Sex (male)	-0.2905	0.3594	0.4235	-0.1127	0.3682	0.7610	-0.2992	0.3734	0.4274	-0.2926	0.3758	0.4405	0.1262	0.3553	0.7242	0.5546	0.3231	0.0933
DM (yes)	0.5313	0.3147	0.0986	0.5313	0.3224	0.1067	0.5095	0.3270	0.1266	0.3326	0.3291	0.3178	0.3569	0.3112	0.2577	0.5901	0.2830	0.0430
Obesity (yes)	0.0663	0.3406	0.8465	0.1532	0.3489	0.6627	0.0884	0.3539	0.8039	0.1225	0.3561	0.7325	0.0989	0.3367	0.7703	0.2534	0.3062	0.4124
Disease Severity (severe)	-0.0093	0.3172	0.9767	-0.0542	0.3249	0.8684	-0.0908	0.3296	0.7842	0.0633	0.3317	0.8496	0.2303	0.3136	0.4668	-0.0186	0.2852	0.9483
Days pso	0.0012	0.1534	0.9936	0.0623	0.1571	0.6935	-0.0291	0.1593	0.8558	0.0033	0.1603	0.9839	0.0507	0.1516	0.7398	0.0141	0.1379	0.9193

Est (estimates), SE (standard error), pso (post symptom onset)

Table S2d. Generalised linear regression models of CD8 T cell proliferative responses in SARS-CoV-2 recovered patients

Coefficient	S1 CD8 proliferation			S2 CD8 proliferation			M CD8 proliferation			N CD8 proliferation			ORF3+6 CD8 proliferation			ORF7+8 CD8 proliferation		
	Est	SE	p value	Est	SE	p value	Est	SE	p value	Est	SE	p value	Est	SE	p value	Est	SE	p value
Age	0.2227	0.1469	0.1368	0.2834	0.1473	0.0611	0.1215	0.1627	0.4593	0.1715	0.1595	0.2881	0.2439	0.1588	0.1320	0.4568	0.1356	0.0016
Sex (male)	-0.3662	0.3304	0.2738	-0.4932	0.3314	0.1440	-0.3724	0.3659	0.3145	-0.1622	0.3587	0.6534	-0.2693	0.3573	0.4551	0.1134	0.3049	0.7118
DM (yes)	0.4680	0.2893	0.1131	0.3532	0.2902	0.2301	0.3330	0.3204	0.3044	0.2438	0.3141	0.4419	0.0904	0.3128	0.7740	0.3822	0.2670	0.1595
Obesity (yes)	0.6695	0.3131	0.0382	0.8002	0.3140	0.0145	0.5399	0.3467	0.1268	0.4656	0.3399	0.1779	0.4066	0.3386	0.2364	0.8032	0.2889	0.0080
Disease Severity (severe)	0.4684	0.2916	0.1155	0.2513	0.2924	0.3950	0.1253	0.3229	0.6999	0.4430	0.3166	0.1689	0.3634	0.3153	0.2554	0.3205	0.2691	0.2402
Days pso	0.0863	0.1410	0.5436	0.0462	0.1414	0.7453	0.1522	0.1561	0.3351	0.0701	0.1531	0.6491	0.0480	0.1524	0.7542	0.0118	0.1301	0.9282
Est (estimates), SE (standard error), pso (post symptom onset)																		

Table S2e. Generalised linear regression models of CD4 T cell cytokine responses in SARS-CoV-2 recovered patients

Coefficient	CD4 Spike IFN- γ			CD4 Spike IL-2			CD4 Spike TNF			CD4 M+N IFN- γ			CD4 M+N IL-2			CD4 M+N TNF		
	Est	SE	p value	Est	SE	p value	Est	SE	p value	Est	SE	p value	Est	SE	p value	Est	SE	p value
Age	0.3170	0.2982	0.3128	0.2555	0.2459	0.3233	0.2092	0.3048	0.5081	0.2674	0.3133	0.4135	0.1944	0.2594	0.4708	-0.3688	0.3110	0.2632
Sex (male)	0.3723	0.6867	0.5996	1.0306	0.5663	0.0988	0.3834	0.7020	0.5970	0.2759	0.7215	0.7102	0.5908	0.5973	0.3460	-0.2361	0.7162	0.7485
DM (yes)	-0.7169	0.5252	0.2022	-0.4192	0.4331	0.3560	-0.4518	0.5369	0.4198	-0.7481	0.5518	0.2050	-0.3923	0.4568	0.4106	0.0420	0.5478	0.9403
Obesity (yes)	0.1716	0.6298	0.7908	0.1389	0.5193	0.7945	0.8563	0.6438	0.2130	0.5275	0.6617	0.4438	-0.0329	0.5478	0.9533	-0.1901	0.6568	0.7782
Disease Severity (severe)	0.3686	0.5900	0.5462	0.1065	0.4865	0.8312	-0.4126	0.6031	0.5094	-0.1854	0.6199	0.7710	0.2750	0.5132	0.6037	-0.1665	0.6154	0.7922
Days pso	-0.2078	0.3253	0.5373	-0.3230	0.2683	0.2562	0.0027	0.3325	0.9936	-0.1130	0.3418	0.7478	-0.5099	0.2830	0.1017	-0.4725	0.3393	0.1939

Est (estimates), SE (standard error), pso (post symptom onset)

Table S2f. Generalised linear regression models of CD8 T cell cytokine responses in SARS-CoV-2 recovered patients

Coefficient	CD8 Spike IFN- γ			CD8 Spike IL-2			CD8 Spike TNF			CD8 M+N IFN- γ			CD8 M+N IL-2			CD8 M+N TNF		
	Est	SE	p value	Est	SE	p value	Est	SE	p value	Est	SE	p value	Est	SE	p value	Est	SE	p value
Age	-0.3468	0.3103	0.2899	-0.5560	0.2141	0.0266	-0.2412	0.3162	0.4633	-0.0623	0.3305	0.8542	-0.5717	0.2919	0.0786	-0.2982	0.2994	0.3427
Sex (male)	-0.4403	0.7146	0.5516	0.1160	0.4930	0.8187	-0.6419	0.7282	0.3987	-0.1148	0.7610	0.8831	0.0510	0.6722	0.9410	0.3871	0.6893	0.5868
DM (yes)	-0.6703	0.5465	0.2481	-0.2953	0.3771	0.4516	0.2779	0.5569	0.6286	-0.0871	0.5820	0.8840	-0.1144	0.5141	0.8283	0.0486	0.5272	0.9284
Obesity (yes)	-0.0194	0.6553	0.9770	1.2171	0.4521	0.0226	0.6295	0.6678	0.3680	0.6008	0.6979	0.4095	0.3194	0.6164	0.6156	0.6140	0.6322	0.3543
Disease Severity (severe)	0.6468	0.6140	0.3169	0.6714	0.4236	0.1441	0.6328	0.6256	0.3356	-0.7529	0.6538	0.2763	0.2345	0.5775	0.6933	-0.3396	0.5923	0.5790
Days pso	0.0369	0.3385	0.9154	0.3537	0.2335	0.1608	0.2361	0.3449	0.5091	-0.0864	0.3605	0.8155	-0.2600	0.3184	0.4332	0.0121	0.3265	0.9711

Est (estimates), SE (standard error), pso (post symptom onset)

Table S3. Antibodies used for intracellular cytokine staining and proliferation assay

Marker	Fluorochrome	Clone	Isotype	Species reactivity	Host Species	Manufacturer	Catalogue number	Dilution used
CD14	APC-Fire750	M5E2	IgG2a, κ	Human	Mouse	Biologend, UK	301854	200
CD3	PerCP	UCHT1	IgG1, κ	Human	Mouse	Biologend, UK	300428	100
CD3	FITC	UCHT1	IgG1, κ	Human	Mouse	Biologend, UK	300440	50
CD4	APC	RPA-T4	IgG1, κ	Human	Mouse	Biologend, UK	300514	200
CD8	PE-Cy7	RPA-T8	IgG1, κ	Human	Mouse	Biologend, UK	301012	200
CD8	BV510	RPA-T8	IgG1, κ	Human	Mouse	Biologend, UK	301048	600
IFN- γ	PE	4S.B3	IgG1, κ	Human	Mouse	Biologend, UK	502508	50
IL-2	PE-Cy7	MQ1-17H12	IgG2a, κ	Human	Rat	eBioscience, USA	25-7029-41	100
TNF	FITC	MAb11	IgG1, κ	Human	Mouse	Biologend, UK	502906	40

Methods

Generalised linear models

Generalised linear models (GLMs) were performed to estimate the association of obesity (categorical) and DM (categorical) with antibody, B cell, and T cell immune responses (all continuous and log-transformed) while adjusted for age (continuous), sex (discrete), disease severity (categorical) and days post symptoms onset (continuous) in SARS-CoV-2 recovered patients. All continuous variables were standardised by z-score normalisation. Normality of the data was tested by Shapiro–Wilk test, histogram, and Q-Q diagnostic plots. Interactions and co-linearity between variables were explored.

```
Model < - glm (immune response ~ age + sex + diabetes status + obesity category + disease severity + days post symptoms onset, data = data)
```