

Additional file

# **TG468: A Text Graph Convolutional Network for Predicting Clinical Response to Immune Checkpoint Inhibitor Therapy.**

**Kun Wang<sup>1,2</sup>, Jiangshan Shi<sup>2,3</sup>, Xiaochu Tong<sup>2,3</sup>, Ning Qu<sup>2,3</sup>, Xiangtai Kong<sup>2,3</sup>, Shengkun Ni<sup>2,3</sup>, Jing Xing<sup>4</sup>, Xutong Li<sup>2,3\*</sup>, and Mingyue Zheng<sup>1,2,3\*</sup>**

<sup>1</sup> School of Life Sciences, Division of Life Sciences and Medicine, University of Science and Technology of China, Hefei, 230026, China

<sup>2</sup> Drug Discovery and Design Center, State Key Laboratory of Drug Research, Shanghai Institute of Materia Medica, Chinese Academy of Sciences; 555 Zuchongzhi Road, Shanghai 201203, China

<sup>3</sup> University of Chinese Academy of Sciences; No. 19A Yuquan Road, Beijing 100049, China

<sup>4</sup> Lingang Laboratory, Shanghai 200031, China

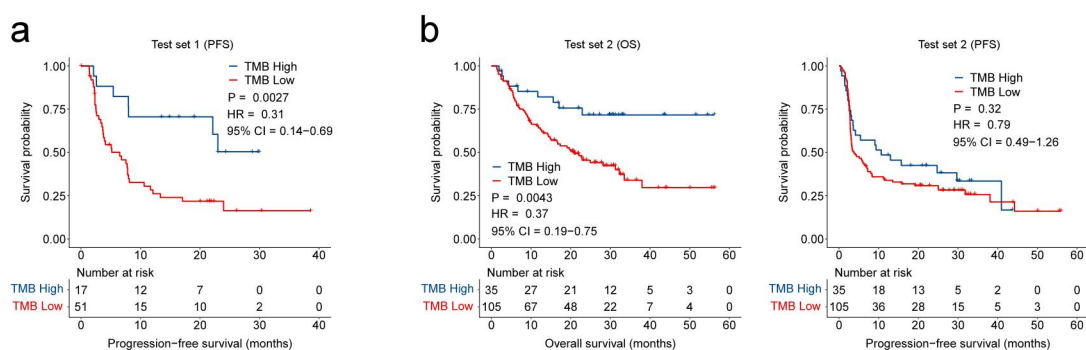
Corresponding author. M. Zheng, School of Life Sciences, Division of Life Sciences and Medicine, University of Science and Technology of China, Hefei, 230026, China. E-mail: [myzheng@simm.ac.cn](mailto:myzheng@simm.ac.cn); X. Li, Drug Discovery and Design Center, State Key Laboratory of Drug Research, Shanghai Institute of Materia Medica, Chinese Academy of Sciences; 555 Zuchongzhi Road, Shanghai 201203, China. E-mail addresses: [lixutong@simm.ac.cn](mailto:lixutong@simm.ac.cn).

## Table of Contents

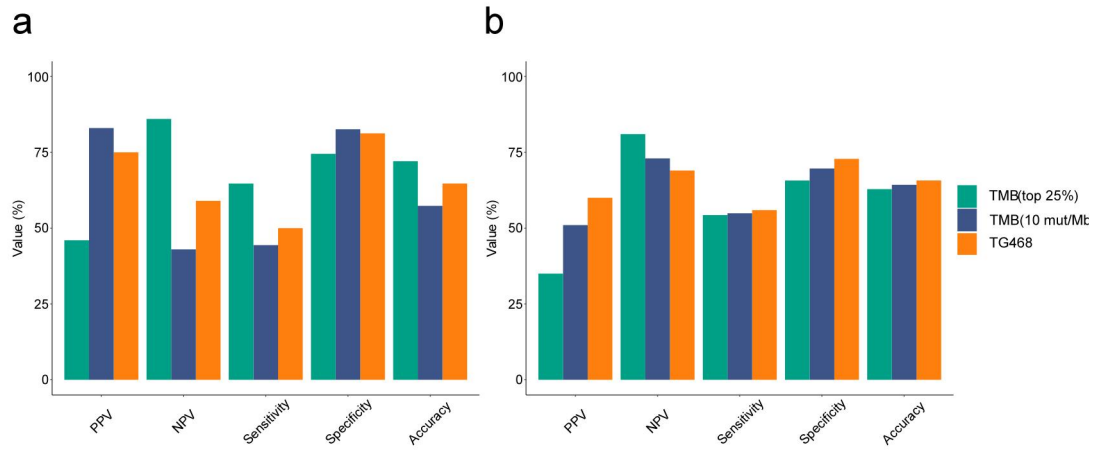
<b>Table S1</b> Description of WES Data sets that received ICI therapy.	S3
<b>Fig. S1</b> KM curves of the test sets based on the TMB (25%) cutoff groupings.	S3
<b>Fig. S2</b> Comparisons between TG468 and TMB were made on PPV, NPV, sensitivity, specificity, accuracy.	S4
<b>Fig. S3</b> Analysis of TG468's prediction results on pan-cancer datasets.	S5

**Table S1 Description of WES Data sets that received ICI therapy.**

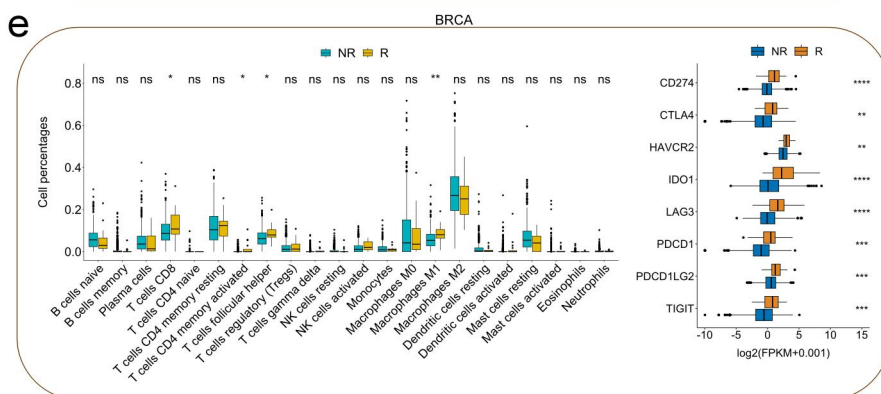
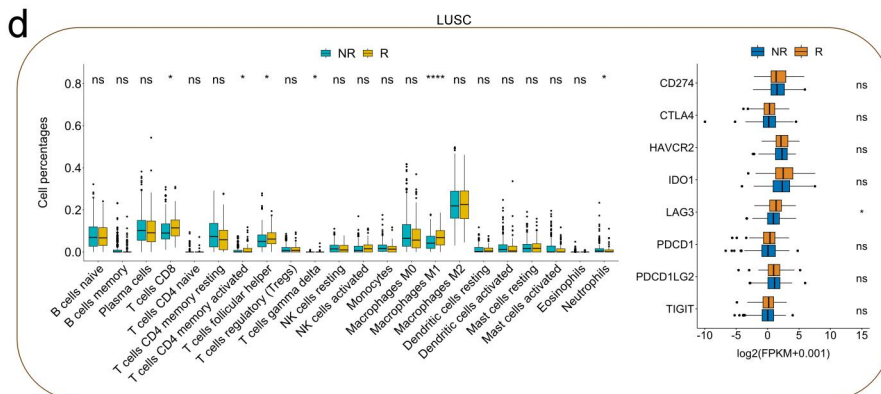
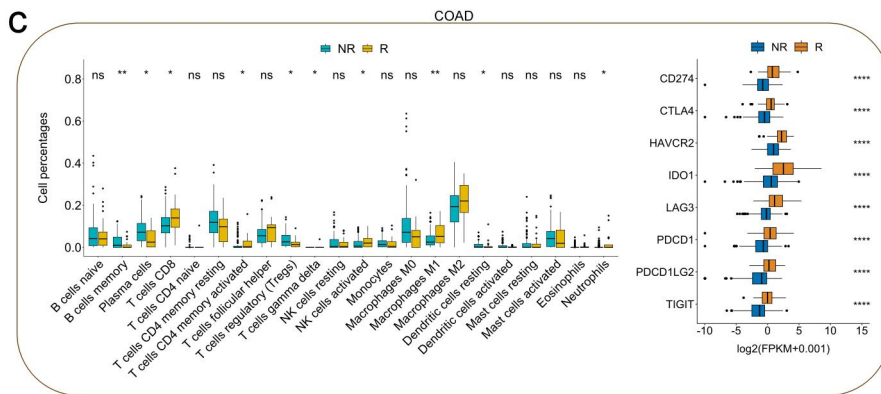
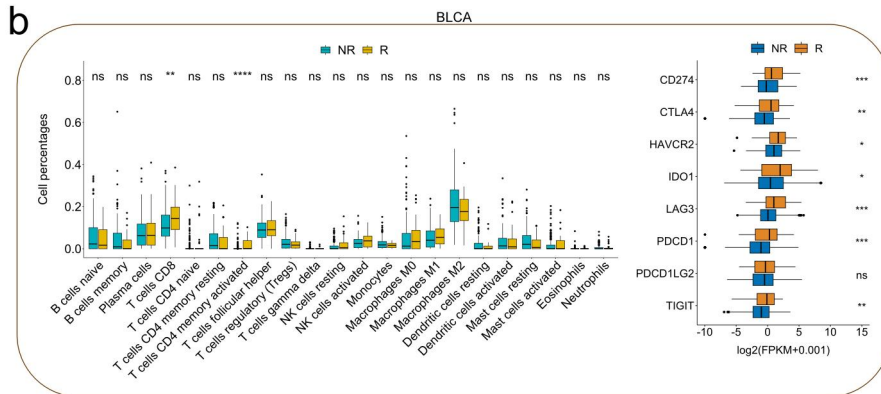
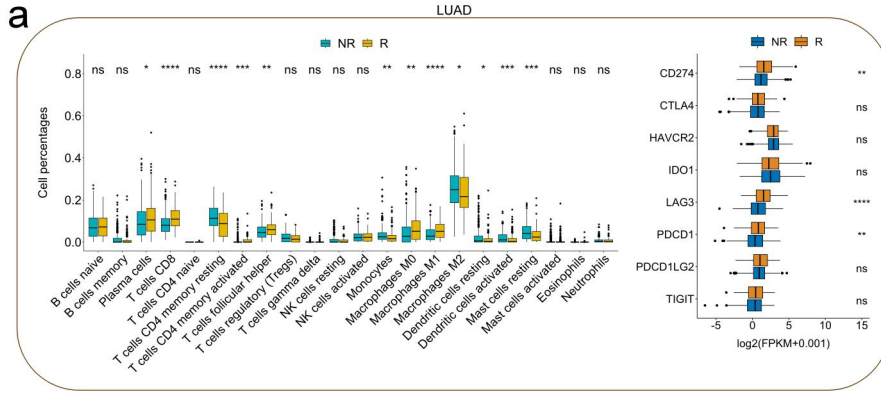
Data sets	Target	Cancer type	Patient number
Miao2019 cohort	Anti-PD-1	Renal Clear Cell Carcinoma	35
Hugo cohort	Anti-PD-1	Melanoma	38
Miao2018 cohort	Anti-CTLA-4 Anti-PD-1 Anti-CTLA-4 + Anti-PD-1	Non-Small Cell Lung Cancer Bladder Cancer Melanoma Head and Neck Cancer	249
Rizvi cohort	Anti-PD-1	Non-Small Cell Lung Cancer	35
Snyder cohort	Anti-CTLA-4	Melanoma	64
Van Allen cohort	Anti-CTLA-4	Melanoma	110
Riaz cohort	Anti-PD-1	Melanoma	73
Hellmann cohort	Anti-CTLA-4 + Anti-PD-1	Non-Small Cell Lung Cancer	75
Liu cohort	Anti-PD-1	Melanoma	144



**Fig. S1. KM curves of the test sets based on the TMB (25%) cutoff groupings. a, KM curve of PFS on test set 1 (Hellmann cohort). b, KM curves of OS and PFS on test set 2 (Liu cohort).**



**Fig. S2. Comparisons between TG468 and TMB were made on PPV, NPV, sensitivity, specificity, accuracy. a,** Comparison of prediction performance between TG468 and TMB on the test set of Hellmann cohort. **b,** Comparison of prediction performance between TG468 and TMB on the test set of Liu cohort. Positive predictive value, PPV; Negative predictive value, NPV.



**Fig. S3. Analysis of TG468's prediction results on pan-cancer datasets. a-e,** Immune infiltration analysis and immune checkpoint-related gene expression analysis based on prediction results of pan-cancer datasets. Abbreviations: LUAD, Lung adenocarcinoma; BLCA, Bladder Urothelial Carcinoma; COAD, Colon adenocarcinoma; LUSC, Lung squamous cell carcinoma; BRCA, Breast invasive carcinoma.