

Supplemental Table 1. Information about HCAP studies

	United States	England	India	Mexico	China	South Africa
Parent cohort study	Health and Retirement study (HRS)	English Longitudinal Study on Ageing (ELSA)	Longitudinal Aging Study in India (LASI)	Mexican Health and Aging Study (MHAS)	China Health and Retirement Longitudinal Study (CHARLS)	Health and Aging in Africa: A Longitudinal Study of an INDEPTH Community in South Africa (HAALSI)
HCAP sub-study	Harmonized Cognitive Assessment Protocol Project of Health and Retirement study (HRS-HCAP)	Harmonised Cognitive Assessment Protocol Sub-study of the English Longitudinal Study of Ageing (ELSA-HCAP)	Harmonised Diagnostic Assessment of Dementia for the Longitudinal Aging Study in India (LASI-DAD)	Mexican Cognitive Aging Ancillary Study (Mex-Cog)	Harmonized Cognitive Assessment Protocol for the China Health and Retirement Longitudinal Study (CHARLS-HCAP)	Cognition and dementia in the Health and Aging in Africa Longitudinal Study of an INDEPTH community in South Africa (HAALSI-HCAP)
Year in HCAPs implemented	2016	2018	2017-2019	2016	2018	2019
Eligibility criteria for HCAPs	1. Aged 65 years and over at the time of HRS-HCAP survey 2. Completed core interview	1. Aged 65 years and over at the time of ELSA-HCAP survey 2. Completed an ELSA interview in wave 7 (2014-15) or wave 8 (2016-17)	1. Aged 60 years and over at the time of LASI-DAD survey	1. Aged 55 and over in the MHAS 2015 2. Completed a direct or proxy interview for health reasons in the MHAS 2015	1. Aged 60 and over at the time of CHARLS-HCAP	1. Aged 50 and over
Number of target cases to conduct HCAPs	4,425	1,778	3,891	3,250	Not reported	Not reported

Number of
completed HCAPs

3,496

1,273

4,096

2,042

9,755

628

Supplemental Table 2. Cognitive test items and their overlap across each study: Results from HCAP studies (N=21,141)

Variable	HRS-HCAP	ELSA-HCAP	LASI-DAD (literate)	LASI-DAD (illiterate)	Mex-Cog	CHARLS-HCAP	HAALSI-HCAP
Orientation							
Day of month	0.68 (0.43)	0.68 (0.43)	0.68 (0.43)	0.68 (0.43)	0.68 (0.43)	0.68 (0.43)	0.68 (0.43)
Month	0.88 (0.73)	0.88 (0.73)	0.88 (0.73)	0.88 (0.73)	0.88 (0.73)	0.88 (0.73)	0.88 (0.73)
Year	0.90 (0.76)	0.90 (0.76)			0.90 (0.76)	0.90 (0.76)	
Year (DIF adjusted)			0.70 (0.82)	0.70 (0.82)			0.70 (0.82)
Day of the week	0.76 (0.63)	0.76 (0.63)	0.76 (0.63)	0.76 (0.63)	0.76 (0.63)	0.76 (0.63)	0.76 (0.63)
What time is it					0.17 (0.32)		0.17 (0.32)
Where are we					0.13 (0.35)		
What country are we in		0.62 (0.72)			0.62 (0.72)		0.62 (0.72)
What state are we in	0.64 (0.61)		0.64 (0.61)	0.64 (0.61)	0.64 (0.61)	0.64 (0.61)	0.64 (0.61)
What county are we in	0.68 (0.55)	0.68 (0.55)				0.68 (0.55)	
What city are we in	0.83 (0.72)	0.83 (0.72)	0.83 (0.72)	0.83 (0.72)		0.83 (0.72)	0.83 (0.72)
Season of year	0.54 (0.42)	0.54 (0.42)	0.54 (0.42)	0.54 (0.42)		0.54 (0.42)	0.54 (0.42)
Floor of building	0.66 (0.56)		0.66 (0.56)	0.66 (0.56)		0.66 (0.56)	0.66 (0.56)
Address (street name and/or building number)	0.76 (0.62)	0.76 (0.62)	0.76 (0.62)	0.76 (0.62)		0.76 (0.62)	
Name of hospital or district/municipality			0.63 (0.69)	0.63 (0.69)			0.63 (0.69)
Memory							
CERAD immediate sum of 3 trials	0.87 (0.82)	0.87 (0.82)				0.87 (0.82)	
CERAD immediate sum of 3 trials			0.89 (0.69)	0.89 (0.69)	0.89 (0.69)		0.89 (0.69)
CERAD word list delay	0.88 (0.85)	0.88 (0.85)				0.88 (0.85)	
CERAD word list delay			0.88 (0.65)	0.88 (0.65)	0.88 (0.65)		0.88 (0.65)
CERAD recognition	0.75 (0.58)	0.75 (0.58)				0.75 (0.58)	
CERAD recognition			0.79 (0.65)	0.79 (0.65)	0.79 (0.65)		0.79 (0.65)
Three word immediate registration	0.51 (0.49)	0.51 (0.49)	0.51 (0.49)	0.51 (0.49)	0.51 (0.49)	0.51 (0.49)	0.51 (0.49)
Three word delayed recall	0.76 (0.65)	0.76 (0.65)	0.76 (0.65)	0.76 (0.65)	0.76 (0.65)	0.76 (0.65)	0.76 (0.65)
Logical Memory immediate	0.71 (0.65)	0.71 (0.65)	0.71 (0.65)	0.71 (0.65)	0.71 (0.65)		0.71 (0.65)
Logical Memory delay	0.74 (0.67)	0.74 (0.67)	0.74 (0.67)	0.74 (0.67)	0.74 (0.67)		0.74 (0.67)
Logical memory recognition	0.62 (0.52)	0.62 (0.52)	0.62 (0.52)	0.62 (0.52)			0.62 (0.52)
Brave man immediate (East Boston Memory Test)	0.42 (0.39)	0.42 (0.39)	0.42 (0.39)	0.42 (0.39)	0.42 (0.39)		
Brave man delay (East Boston Memory Test)	0.53 (0.43)	0.53 (0.43)	0.53 (0.43)	0.53 (0.43)	0.53 (0.43)		
CERAD constructional praxis delay	0.70 (0.67)	0.70 (0.67)	0.70 (0.67)	0.70 (0.67)	0.70 (0.67)		0.70 (0.67)
Executive functioning							

Problem solving			0.75 (0.71)	0.75 (0.71)			
Ravens progressive matrices	0.74 (0.68)	0.74 (0.68)	0.74 (0.68)	0.74 (0.68)			0.74 (0.68)
HRS Number series	0.64 (0.57)	0.64 (0.57)					
Number series						0.56 (0.44)	
Trails A time (letters and numbers)	0.79 (0.76)	0.79 (0.76)					
Trails B time (letters and numbers)	0.76 (0.67)	0.76 (0.67)					
Similarities			0.58 (0.57)	0.58 (0.57)	0.58 (0.57)		0.58 (0.57)
Token Test			0.77 (0.75)	0.77 (0.75)			0.77 (0.75)
Digit Span Forward (single item)			0.68 (0.60)	0.68 (0.60)			
Digit Span Backward (single item)			0.73 (0.64)	0.73 (0.64)			
Digit Span Forward (multiple items)							0.48 (0.38)
Digit Span Backward (multiple items)							0.43 (0.28)
Go-No-Go			0.71 (0.67)	0.71 (0.67)	0.71 (0.67)		0.71 (0.67)
Motor Programming							0.76 (0.74)
MMSE Spelling backwards	0.62 (0.65)						
Backward counting, 100-0	0.69 (0.63)	0.69 (0.63)					
Backward counting, 20-0					0.54 (0.79)		
Symbol Digit Modalities Test *	0.88 (0.77)	0.88 (0.77)					
Symbols and Digits test **					0.58 (0.77)		
Symbol Cancellation Test			0.67 (0.68)	0.67 (0.68)	0.67 (0.68)		0.67 (0.68)
Letter cancellation	0.59 (0.57)	0.59 (0.57)					
Serial 3s					0.36 (0.54)		
Serial 7s		0.56 (0.53)	0.56 (0.53)	0.56 (0.53)	0.56 (0.53)	0.56 (0.53)	0.56 (0.53)
Backward Day naming			0.68 (0.68)	0.68 (0.68)			0.68 (0.68)
Forward day naming							0.74 (0.68)
CDR calculation-cent							0.62 (0.69)
Language							
Animal fluency	0.74 (0.68)	0.74 (0.68)	0.74 (0.68)	0.74 (0.68)	0.74 (0.68)	0.74 (0.68)	0.74 (0.68)
Name a described cactus	0.81 (0.70)	0.81 (0.70)					
Name a described cactus (DIF adjusted)						0.79 (0.60)	
Name a described coconut			0.56 (0.45)	0.56 (0.45)			
What are scissors used for?	0.71 (0.54)	0.71 (0.54)	0.71 (0.54)	0.71 (0.54)	0.71 (0.54)	0.71 (0.54)	0.71 (0.54)
Object naming (watch)	0.69 (0.59)		0.69 (0.59)	0.69 (0.59)	0.69 (0.59)	0.69 (0.59)	0.69 (0.59)
Object naming (pencil)	0.56 (0.57)		0.56 (0.57)	0.56 (0.57)	0.56 (0.57)	0.56 (0.57)	0.56 (0.57)
Name the elbow	0.88 (0.68)	0.88 (0.68)	0.88 (0.68)	0.88 (0.68)	0.88 (0.68)	0.88 (0.68)	0.88 (0.68)
Write a sentence (or write one's name)	0.62 (0.52)	0.62 (0.52)	0.62 (0.52)		0.62 (0.52)	0.62 (0.52)	0.62 (0.52)

Say a sentence				0·81 (0·67)			
Read and follow command (Close your eyes)	0·61 (0·46)	0·61 (0·46)	0·61 (0·46)		0·61 (0·46)		0·61 (0·46)
Read and follow command (DIF adjusted)						0·73 (0·58)	
Follow example (close your eyes)				0·86 (0·71)			
Repetition of a phrase	0·46 (0·37)	0·46 (0·37)	0·46 (0·37)	0·46 (0·37)	0·46 (0·37)	0·46 (0·37)	0·46 (0·37)
What does one do with a hammer	0·43 (0·24)	0·43 (0·24)	0·43 (0·24)	0·43 (0·24)	0·43 (0·24)	0·43 (0·24)	0·43 (0·24)
Define Bridge					0·62 (0·54)		
Point to 2 things in the vicinity	0·85 (0·65)	0·85 (0·65)	0·85 (0·65)	0·85 (0·65)	0·85 (0·65)	0·85 (0·65)	0·85 (0·65)
Where is the local market?	0·58 (0·48)	0·58 (0·48)	0·58 (0·48)	0·58 (0·48)	0·58 (0·48)	0·58 (0·48)	0·58 (0·48)
Follow 3-stage instruction	0·39 (0·30)	0·39 (0·30)	0·39 (0·30)	0·39 (0·30)	0·39 (0·30)		0·39 (0·30)
Name president or Prime Minister	0·85 (0·82)	0·85 (0·82)	0·85 (0·82)	0·85 (0·82)		0·85 (0·82)	0·85 (0·82)
Name deputy president							0·87 (0·75)
Phonemic Fluency							0·59 (0·63)
Boston Naming Test, uncued							0·68 (0·62)

Legend. This table shows factor loadings for domain-specific factor analyses, and in parentheses the factor loadings for the model for general cognitive function. Loadings are standardized to have a range from -1 to 1, thus can be interpretable as correlations between items and the underlying factor. The presence of factor loadings for a given test item in each column reflects decisions about the comparability of items made at the prestatistical harmonization as well as after testing for differential item functioning. Refer to the Methods and Results for details.

* (110 items, fill in number for a given symbol)

** (56 items, fill in symbol for a given number)

Supplemental Table 3. Results of differential item functioning among confident and tentative linking items: Results from HCAP (N=21,141)

Study	Cognitive Stage domain	Cognitive test item of DIF testing	Association with cohort (odds ratio)	95% CI lower ^a	95% CI upper	Interpretation			
HAALSI HCAP	Language	DIF among confident linking items							
		Name the elbow	1.65	1.31	2.08	DIF			
		Animal fluency	N/A			No DIF			
		What are scissors used for?	N/A			No DIF			
		Point to 2 things in the vicinity	N/A			No DIF			
		Name president or Prime Minister	N/A			No DIF			
		DIF among tentative linking items, treating confident items as anchors							
		What does one do with a hammer	2.64	2.14	3.27	DIF			
		Where is the local market?	2.06	1.81	2.34	DIF			
		ELSA HCAP	Language	DIF among confident linking items					
				Name a described cactus	0.61	0.55	0.67	DIF	
				What does one do with a hammer	2.29	1.86	2.82	DIF	
Follow 3-stage instruction	1.83			1.66	2.03	DIF			
Name president or Prime Minister	0.43			0.39	0.47	DIF			
Animal fluency	N/A					No DIF			
Point to 2 things in the vicinity	N/A					No DIF			
What are scissors used for?	N/A					No DIF			
Name the elbow	N/A					No DIF			
Read and follow command (Close your eyes)	N/A					No DIF			
Repetition of a phrase	N/A					No DIF			
DIF among tentative linking items, treating confident items as anchors									
Where is the local market?	2.31	2.03	2.62	DIF					

		Write a sentence (or write one's name)	N/A		No DIF
LASI-DAD	Language				
		DIF among confident linking items			
		What are scissors used for?	N/A		No DIF
		Object naming (pencil)	N/A		No DIF
		Write a sentence (or write one's name)	1.40	1.24	1.58 Negligible
		Read and follow command (Close your eyes)	0.14	0.13	0.16 DIF
		Follow 3-stage instruction	1.65	1.51	1.80 DIF
		Animal fluency	N/A		No DIF
		Object naming (watch)	N/A		No DIF
		Name the elbow	1.13	0.96	1.32 Negligible
		Point to 2 things in the vicinity	N/A		No DIF
		Name president or Prime Minister	N/A		No DIF
		DIF among tentative linking items, treating confident items as anchors			
		Repetition of a phrase	4.85	4.32	5.44 DIF
		What does one do with a hammer	N/A		No DIF
		Where is the local market?	3.79	3.36	4.27 DIF
Mex-Cog	Language				
		DIF among confident linking items			
		Animal fluency	N/A		No DIF
		Object naming (pencil)	N/A		No DIF
		Name the elbow	1.03	0.87	1.21 Negligible
		Read and follow command (Close your eyes)	N/A		No DIF
		Point to 2 things in the vicinity	N/A		No DIF
		Follow 3-stage instruction	N/A		No DIF
		DIF among tentative linking items, treating confident items as anchors			
		What are scissors used for?	1.71	1.42	2.06 DIF
		Repetition of a phrase	3.21	2.93	3.51 DIF

What does one do with a hammer	2.08	1.83	2.37 DIF
Where is the local market?	0.48	0.45	0.52 DIF
Object naming (watch)	N/A		
Write a sentence (or write one's name)	N/A		

CHARLS HCAP Language

DIF among confident linking items

Name the elbow	0.44	0.39	0.50 DIF
Write a sentence (or write one's name)	0.53	0.48	0.58 DIF
What does one do with a hammer	2.32	2.12	2.54 DIF
Point to 2 things in the vicinity	0.43	0.37	0.49 DIF
Name president or Prime Minister	1.40	1.29	1.52 Negligible

DIF among tentative linking items, treating confident items as anchors

Object naming (watch)	0.59	0.49	0.70 DIF
Object naming (pencil)	N/A		
Where is the local market?	1.47	1.37	1.57 Negligible

HAALSI HCAP Memory

DIF among confident linking items

None available

DIF among tentative linking items, with no anchors

Logical Memory immediate	N/A		
Logical Memory delay	3.49	3.01	3.97 DIF
CERAD constructional praxis delay	-1.76	-2.10	-1.43 DIF
Logical memory recognition	-0.17	-0.46	0.12 DIF

ELSA HCAP Memory

DIF among confident linking items

Three word delayed recall	0.51	0.48	0.54 Negligible
Three word immediate registration	1.43	1.25	1.63 Negligible
CERAD immediate sum of 3 trials	N/A		No DIF

CERAD word list delay	N/A	No DIF
CERAD recognition	N/A	No DIF

DIF among tentative linking items, treating confident items as anchors

Logical Memory immediate	-2.05	-2.27	-1.82 DIF
Logical memory recognition	0.45	0.30	0.60 DIF
Brave man delay (East Boston Memory Test)	1.68	1.58	1.78 DIF
Brave man immediate (East Boston Memory Test)	2.29	2.17	2.42 DIF
Logical Memory delay	N/A	No DIF	

LASI-DAD Memory

DIF among confident linking items

Logical Memory delay	-0.34	-0.56	-0.12 DIF
Three word delayed recall	0.86	0.81	0.92 Negligible
Brave man delay (East Boston Memory Test)	1.83	1.73	1.93 DIF
Brave man immediate (East Boston Memory Test)	1.58	1.49	1.66 DIF
Three word immediate registration	N/A	No DIF	
Logical Memory immediate	N/A	No DIF	
Logical memory recognition	N/A	No DIF	

DIF among tentative linking items, treating confident items as anchors

CERAD constructional praxis delay	-0.89	-1.07	-0.72 DIF
-----------------------------------	-------	-------	-----------

Mex-Cog Memory

DIF among confident linking items

CERAD constructional praxis delay	N/A	No DIF
-----------------------------------	-----	--------

DIF among tentative linking items, treating confident items as anchors

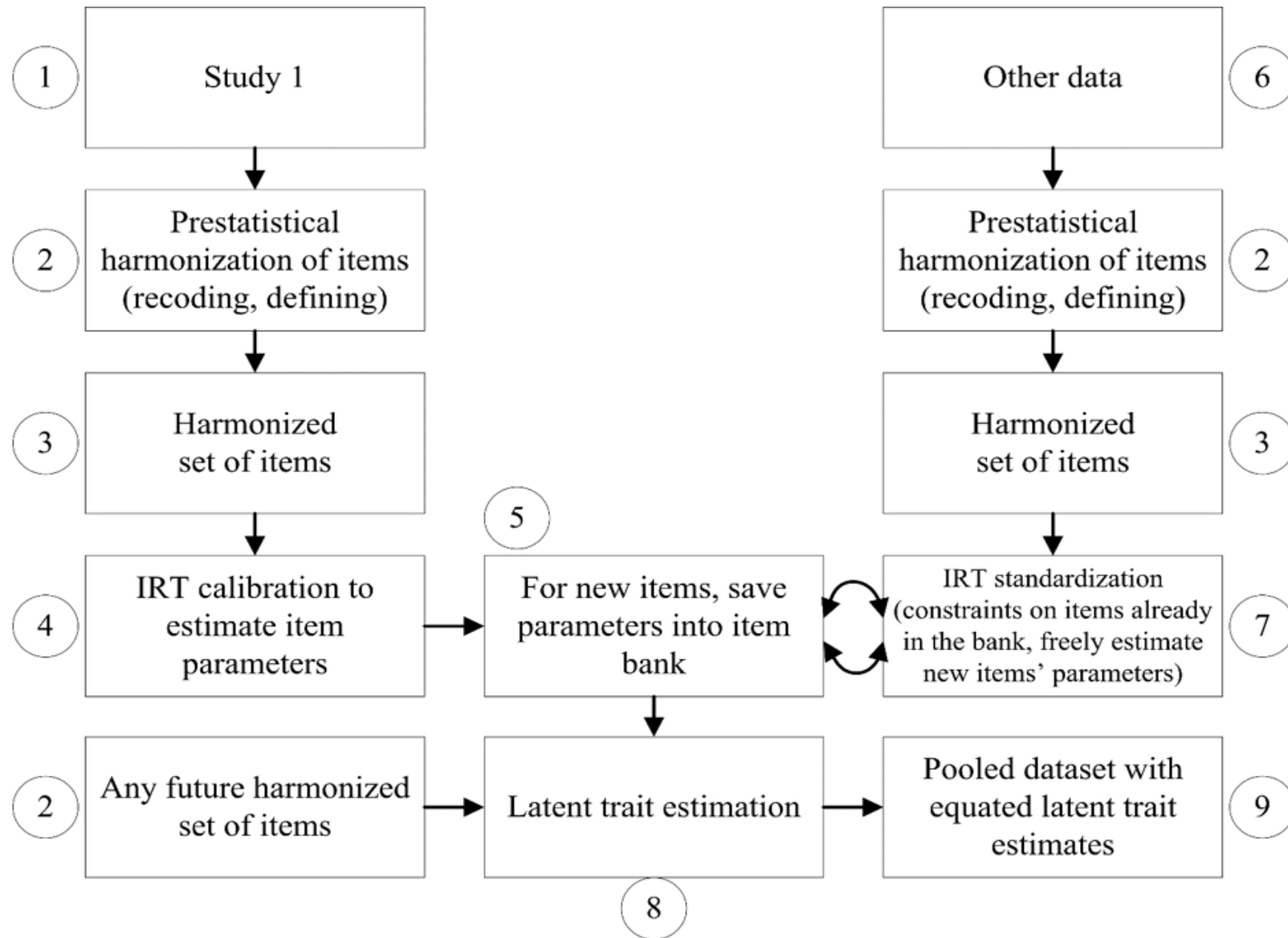
Logical Memory immediate	-2.72	-2.94	-2.49 DIF
Logical Memory delay	-1.73	-1.98	-1.47 DIF
Three word delayed recall	0.80	0.75	0.86 Negligible
Brave man delay (East Boston Memory Test)	1.69	1.60	1.80 DIF
Brave man immediate (East Boston Memory Test)	N/A	No DIF	

CHARLS HCAP	Memory	Three word immediate registration	N/A	No DIF		
		DIF among confident linking items				
		Three word delayed recall	N/A	No DIF		
		Three word immediate registration	N/A	No DIF		
	DIF among tentative linking items, treating confident items as anchors					
	CERAD immediate sum of 3 trials	-0.14	-0.35	0.07	Negligible	
	CERAD word list delay	0.92	0.82	1.01	Negligible	
	CERAD recognition	0.87	0.73	1.01	Negligible	
HAALSI HCAP	Orientation	DIF among confident linking items				
		What state are we in	0.16	0.13	0.19	DIF
		Day of the week	N/A	No DIF		
		What city are we in	N/A	No DIF		
		DIF among tentative linking items, treating confident items as anchors				
		Floor of building	N/A	No DIF		
Season of year	N/A	No DIF				
ELSA HCAP	Orientation	DIF among confident linking items				
		Day of month	N/A	No DIF		
		Month	N/A	No DIF		
		Year	N/A	No DIF		
		Day of the week	N/A	No DIF		
		What city are we in	N/A	No DIF		
		DIF among tentative linking items, treating confident items as anchors				
		Season of year	1.66	1.48	1.86	DIF
		Address	1.38	1.20	1.59	Negligible
What county are we in	N/A	No DIF				

LASI-DAD	Orientation				
		DIF among confident linking items			
		Day of month	1.35	1.23	1.48 Negligible
		Day of the week	0.81	0.73	0.90 Negligible
		What state are we in	0.28	0.24	0.32 DIF
		Season of year	1.47	1.33	1.63 Negligible
		Month	N/A		No DIF
		What city are we in	N/A		No DIF
		DIF among tentative linking items, treating confident items as anchors			
		Floor of building	N/A		No DIF
		Address	N/A		No DIF
Mex-Cog	Orientation				
		DIF among confident linking items			
		Day of month	N/A		No DIF
		Month	N/A		No DIF
		Year	N/A		No DIF
		Day of the week	N/A		No DIF
		What state are we in	N/A		No DIF
		DIF among tentative linking items, treating confident items as anchors			
		None			
CHARLS HCAP	Orientation				
		DIF among confident linking items			
		Year	0.71	0.66	0.77 Negligible
		Day of the week	0.44	0.41	0.48 DIF
		What state are we in	0.66	0.57	0.76 Negligible
		What county are we in	1.50	1.38	1.62 Negligible
		Address	1.79	1.63	1.96 DIF
		Day of month	N/A		No DIF

Month	N/A	No DIF
What city are we in	N/A	No DIF
Floor of building	N/A	No DIF
DIF among tentative linking items, treating confident items as anchors		
Season of year	N/A	No DIF

Supplemental Figure 1: Flowchart of item banking procedure implemented to statistically harmonize cognition across HCAP studies



Legend. This procedure was implemented separately for cognitive domains of orientation, memory, executive functioning, language, and general cognitive performance. Starting with a reference study, HRS-HCAP (step 1), pre-statistical harmonization was conducted by recoding and redefining cognitive test items as needed. Minor transformations were performed as needed to handle missing data and outlying values (step 2), resulting in a harmonized set of cognitive test items to support a measurement model (step 3). Step 4 entails calibration via item response theory methods (equivalent to confirmatory factor analysis, CFA) to freely estimate item parameters including factor loadings, and thresholds (for categorical test items) or intercepts (for continuous test items). Resulting item parameters are saved into an item bank (step 5). Next, additional studies are serially brought in (step 6) to have their cognitive test items recoded as necessary in the same manner as in other studies (step 2 at right), resulting in a unique set of harmonized cognitive test items for a study (step 3 at right). In step 7, IRT standardization is implemented with a CFA model that places constraints on parameters for items in common between the other study and HRS-HCAP as well as previous studies already processed, and freely estimates parameters for items unique to the new study. Parameters for these new items are iteratively added to the item bank (step 5), such that eventually any future harmonized set of items can be used to estimate latent traits (step 8) and save out factor scores into a pooled dataset for all included studies (step 9).