

## SUPPLEMENTARY METHODS

### *Genotype data quality control procedures in CCSS and SJLIFE*

For SJLIFE participants and participants in CCSS whose primary cancer was diagnosed between 1987 and 1999 (Expansion Cohort), paired-end whole-genome sequencing was performed using the Illumina HiSeq X10 or NovaSeq sequencers. Sequencing reads were mapped to the GRCh38 human genome assembly using the Burrows-Wheeler Aligner algorithm<sup>1</sup> (BWA-MEM). Variant calls were processed with GATK v3.4.0<sup>2</sup> and BCFtools<sup>3</sup> using recommended best practices. PLINK v1.90b<sup>4</sup> and VCFtools v0.1.13<sup>5</sup> were used to perform additional quality control, applying the following sample exclusion criteria: excess missingness ( $\geq 5\%$ ), cryptic relatedness ( $\pi\text{-hat} > 0.25$ ), and excess heterozygosity ( $> 3$  standard deviations from sample mean). Variants with minimum genotype quality score  $< 20$ , minimum mean read depth  $< 10$ , HWE test  $P < 1 \times 10^{-10}$  and  $> 10\%$  missingness across samples were removed.

For CCSS participants whose primary cancer was diagnosed before 1987 (Original Cohort), DNA was genotyped at the Cancer Genomics Research Laboratory of the National Cancer Institute (Bethesda, MD) using the Illumina HumanOmni5Exome array. Genotypes were called with Genotyping Module v1.9 (Illumina GenomeStudio software v2011.1). Samples with excess missingness ( $\geq 8\%$ ), heterozygosity ( $< 0.11$  or  $> 0.16$ ), sex discordance (X chromosome heterozygosity  $> 5\%$  for males or  $< 20\%$  for females), and cryptic relatedness (identity-by-descent sharing for first relatives, i.e.,  $> 0.70$ ) were removed. Variants with Hardy Weinberg equilibrium (HWE) test  $P < 0.001$ , call rates  $\leq 97\%$ , and of ambiguous strand (A/T or C/G) were removed. After this quality control process, genotypes were imputed via the Michigan Imputation Server using Minimac3<sup>6</sup> and the Haplotype Reference Consortium r1.1 reference panel. Genetic variants with low imputation quality ( $r^2 < 0.8$ ) were removed.

### *Genetic ancestry*

Procedures to identify the genetic ancestry of SJLIFE and CCSS samples have been described elsewhere.<sup>7,8</sup> Briefly, an EIGENSTRAT-based principal component analysis<sup>9</sup> was performed with PLINK v1.90b for each cohort by combining cohort samples with samples from 1000 Genomes (1000G) global reference populations. Samples with principal component scores  $\pm 3$  SD of the means of the first two principal components in the 1000G European or African populations were considered to be of European or African ancestry, respectively. Principal components were then computed using independent common variants for each genetically inferred ancestral population in SJLIFE and CCSS for inclusion in multivariable models.

### *Variant annotation for rare variant association analyses*

Methods to pool or collapse rare variants are instrumental in association studies of rare variation, enhancing power by examining the combined effect of different rare variants at a given locus<sup>10-12</sup>. To this end, genic annotations were obtained from the ANNOVAR<sup>13</sup> based on the RefSeq gene model, which included the 3' untranslated region (UTR) and 5' UTR, and intron, splicing, frameshift, synonymous, non-synonymous, stopgain, stoploss and upstream (within 5 kilobases of the start of a gene) regions. We categorized rare/low-frequency variants as pathogenic or likely pathogenic that were: (1) protein truncating variants (PTVs), or coding variants that are annotated to cause frameshift, stoploss, stopgain and splicing site changes as predicted by SnpEff<sup>14</sup> (version 5.1d); or (2) pathogenic or likely-pathogenic per ClinVar<sup>15</sup> predictions.

## Functional/regulatory annotations of genetic variants

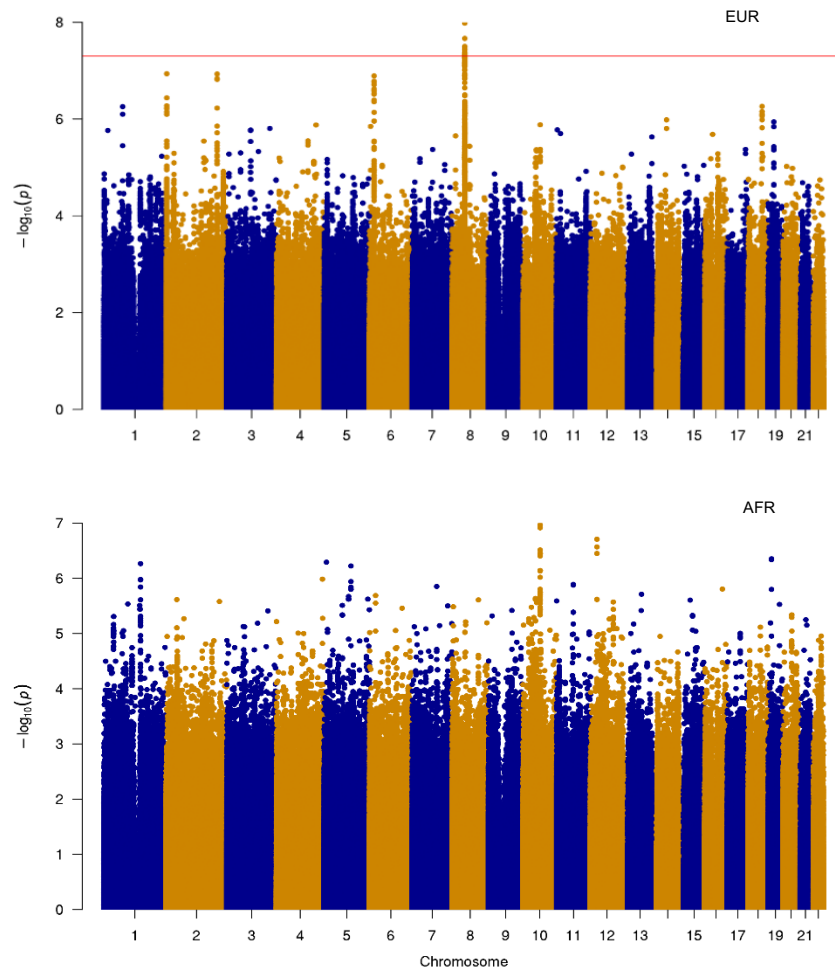
Coding and regulatory consequences of replicated index variants, including Combined Annotation Dependent Depletion<sup>16</sup> (CADD) scores predicting variant deleteriousness, were annotated using the Ensembl Variant Effect Predictor<sup>17</sup> (VEP v99). Significant associations with gene expression, i.e., expression quantitative trait loci (eQTLs; FDR<5%), and DNA methylation levels, i.e., methylation quantitative trait loci (meQTLs; FDR<5%), were identified from the Genotype-Tissue Expression<sup>18</sup> (GTEx v8) project, eQTLGen Consortium<sup>19</sup>, and BIOS Consortium<sup>20</sup> (BIOS QTL) databases. Chromatin state annotations for regulatory states (e.g., promoters, enhancers, transcription, Polycomb repressed) based on the 15-state ChromHMM model trained on 12 epigenetic marks for 127 epigenomes<sup>21</sup> were obtained from the Roadmap Epigenomics Consortium. We used pooled chromatin state annotations for any promoter (states 1-2, 10), transcription (states 3-5), enhancer (states 6-7, 11-12), and polycomb repressed (states 13-14) states among relevant epigenomes (liver [E066, E118]; pancreas [E087, E098]; fat [E023, E025, E063]).

## SUPPLEMENTARY REFERENCES

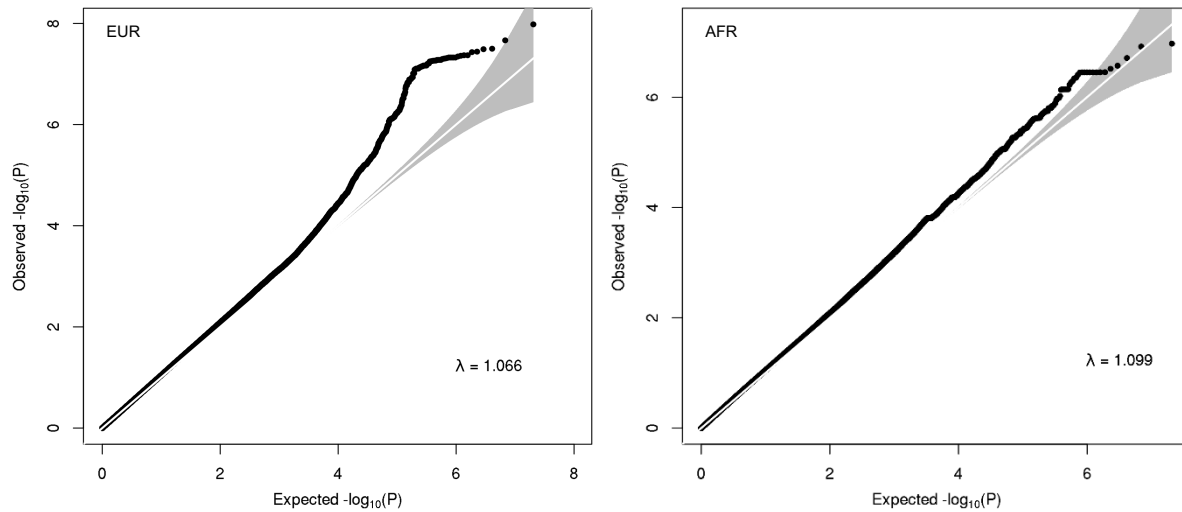
1. Li H. Aligning sequence reads, clone sequences and assembly contigs with BWA-MEM. arXiv [Internet]. 2013 Jan 1, 2022:[1-3 pp.].
2. McKenna A, Hanna M, Banks E *et al.* The Genome Analysis Toolkit: a MapReduce framework for analyzing next-generation DNA sequencing data. **Genome Res.** 2010;20(9):1297-303.
3. Li H, Handsaker B, Wysoker A *et al.* The sequence alignment/map format and SAMtools. **Bioinformatics.** 2009;25(16):2078-9.
4. Purcell S, Neale B, Todd-Brown K *et al.* PLINK: a tool set for whole-genome association and population-based linkage analyses. **Am J Hum Genet.** 2007;81(3):559-75.
5. Danecek P, Auton A, Abecasis G *et al.* The variant call format and VCFtools. **Bioinformatics.** 2011;27(15):2156-8.
6. Das S, Forer L, Schönherr S *et al.* Next-generation genotype imputation service and methods. **Nat Genet.** 2016;48(10):1284-7.
7. Sapkota Y, Turcotte LM, Ehrhardt MJ *et al.* Genome-Wide Association Study in Irradiated Childhood Cancer Survivors Identifies HTR2A for Subsequent Basal Cell Carcinoma. **J Invest Dermatol.** 2019.
8. Sapkota Y, Cheung YT, Moon W *et al.* Whole-genome sequencing of childhood cancer survivors treated with cranial radiation therapy identifies 5p15. 33 locus for stroke: A report from the St. Jude Lifetime Cohort study. **Clinical Cancer Research.** 2019:clincanres. 1231.2019.
9. Price AL, Patterson NJ, Plenge RM *et al.* Principal components analysis corrects for stratification in genome-wide association studies. **Nat Genet.** 2006;38(8):904.
10. Li B & Leal SM. Methods for detecting associations with rare variants for common diseases: application to analysis of sequence data. **The American Journal of Human Genetics.** 2008;83(3):311-21.
11. Price AL, Kryukov GV, de Bakker PI *et al.* Pooled association tests for rare variants in exon-resequencing studies. **The American Journal of Human Genetics.** 2010;86(6):832-8.
12. Lee S, Abecasis GR, Boehnke M & Lin X. Rare-variant association analysis: study designs and statistical tests. **The American Journal of Human Genetics.** 2014;95(1):5-23.
13. Wang K, Li M & Hakonarson H. ANNOVAR: functional annotation of genetic variants from high-throughput sequencing data. **Nucleic Acids Res.** 2010;38(16):e164-e.

14. Cingolani P, Platts A, Wang LL *et al.* A program for annotating and predicting the effects of single nucleotide polymorphisms, SnpEff: SNPs in the genome of *Drosophila melanogaster* strain w1118; iso-2; iso-3. ***Fly***. 2012;6(2):80-92.
15. Landrum MJ, Chitipiralla S, Brown GR *et al.* ClinVar: improvements to accessing data. ***Nucleic Acids Res***. 2020;48(D1):D835-D44.
16. Kircher M, Witten DM, Jain P *et al.* A general framework for estimating the relative pathogenicity of human genetic variants. ***Nat Genet***. 2014;46(3):310.
17. McLaren W, Gil L, Hunt SE *et al.* The ensembl variant effect predictor. ***Genome Biol***. 2016;17(1):122.
18. GTEx Consortium. The Genotype-Tissue Expression (GTEx) pilot analysis: multitissue gene regulation in humans. ***Science***. 2015;348(6235):648-60.
19. Võsa U, Claringbould A, Westra H-J *et al.* Large-scale cis- and trans-eQTL analyses identify thousands of genetic loci and polygenic scores that regulate blood gene expression. ***Nat Genet***. 2021;53(9):1300-10.
20. Bonder MJ, Luijk R, Zhernakova DV *et al.* Disease variants alter transcription factor levels and methylation of their binding sites. ***Nat Genet***. 2017;49(1):131.
21. Kundaje A, Meuleman W, Ernst J *et al.* Integrative analysis of 111 reference human epigenomes. ***Nature***. 2015;518(7539):317-30.

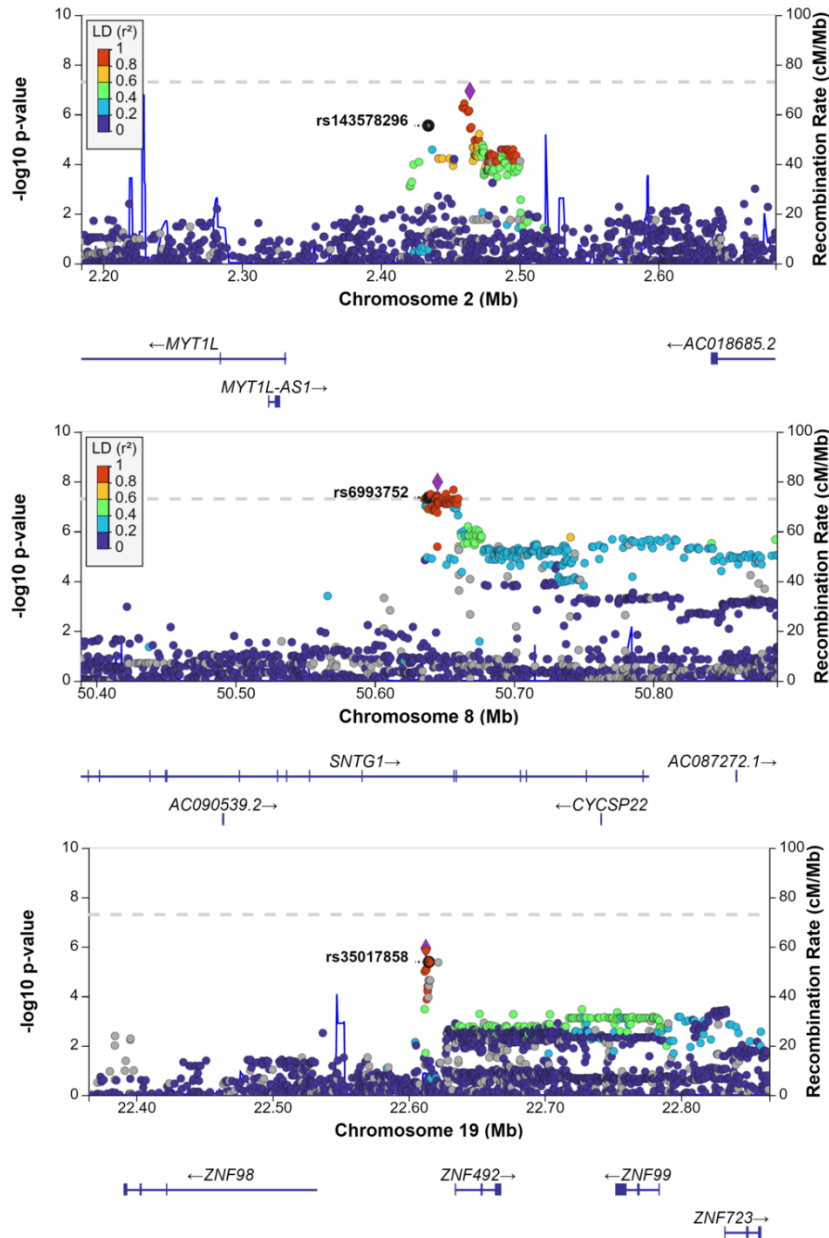
## SUPPLEMENTARY FIGURES AND TABLES



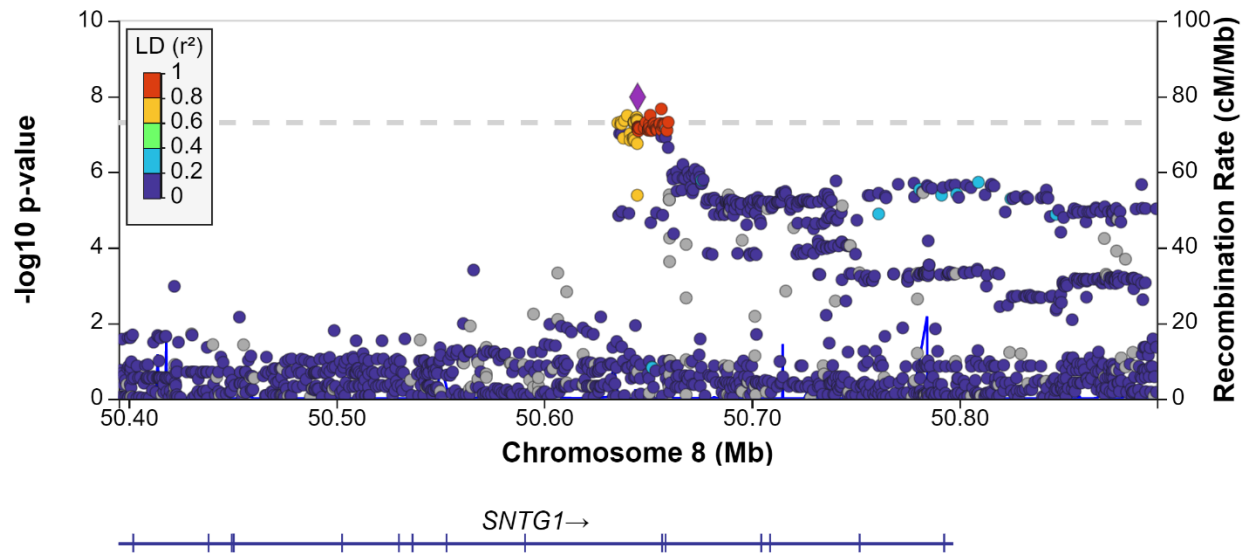
**Supplementary Figure 1:** Manhattan plots for SNP association test p-values among SJLIFE survivors of European (EUR; top panel) and African (AFR; bottom panel) genetic ancestry. The Manhattan plots illustrate  $-\log_{10}$  p-values for SNP associations with diabetes mellitus risk (y-axis) against SNP genomic positions (x-axis). The solid red line signifies the genome-wide significance threshold ( $\log$ -transformed  $P=5 \times 10^{-8}$ ).



**Supplementary Figure 2:** Quantile-quantile (QQ) plot for SNP association test p-values from the SJLIFE discovery GWAS. European (EUR) and African (AFR) genetic ancestry QQ plots are shown on the left and right panels, respectively. The QQ plots show observed  $-\log_{10}$  p-values (y-axis) against those expected under the null distribution of no association (x-axis), as well as the genomic inflation factor (lambda).



**Supplementary Figure 3:** LocusZoom plots of novel diabetes mellitus risk loci from common variant association analyses among SJLIFE survivors of European ancestry. Single variant association test p-values from discovery analyses are shown ( $-\log_{10}$  scale) for variants within a 500-kilobase window around the index variant at each locus (annotated in each panel). SNPs are color coded by their magnitude of linkage disequilibrium (LD, measured as  $r^2$ ) with the most significantly associated variant in the window in the 1000 Genomes European reference panel.



**Supplementary Figure 4:** LocusZoom plot of the novel diabetes mellitus risk loci at 8q11.21 with African ancestry linkage disequilibrium patterns. SNPs are color coded by their magnitude of linkage disequilibrium (LD, measured as  $r^2$ ) with the most significantly associated variant in the window in the 1000 Genomes African reference panel.



**Supplementary Figure 5:** LocusZoom plot of the novel diabetes mellitus risk loci at 5p15.2 with African and European ancestry linkage disequilibrium patterns. SNPs are color coded by their magnitude of linkage disequilibrium (LD, measured as  $r^2$ ) with the most significantly associated variant in the window in the SJLIFE AFR discovery GWAS, in both SJLIFE AFR (top) and EUR (bottom) samples.



**Supplementary Table 1:** Multivariable model for diabetes mellitus risk with clinical risk factors only for SJLIFE participants of European or African genetic ancestry

Variables	SJLIFE EUR (N=3,102)			SJLIFE AFR (N=574)		
	OR	95% CI	P	OR	95% CI	P
Sex	1.23	0.94-1.62	0.13	0.81	0.40-1.63	0.56
Age at cancer diagnosis, per 5 years	0.94	0.83-1.06	0.29	0.61	0.43-0.87	6.5x10 <sup>-3</sup>
Age at follow-up, per 10 years	1.91	1.67-2.19	1.2x10 <sup>-20</sup>	2.52	1.80-3.54	8.0x10 <sup>-8</sup>
Adjusted body mass index, per 5 kg/m <sup>2</sup>	1.56	1.44-1.69	3.8x10 <sup>-28</sup>	1.45	1.18-1.78	3.9x10 <sup>-4</sup>
Maximum cumulative abdominal radiation dose, per 10 Gy	1.23	1.10-1.38	3.6x10 <sup>-4</sup>	1.23	0.91-1.66	0.17
Alkylating agent CED dose, per g/m <sup>2</sup>	0.99	0.97-1.01	0.24	0.95	0.89-1.01	0.11
Any alkylating agents <sup>a</sup>	1.35	1.02-1.80	0.039	0.52	0.25-1.08	0.081

Abbreviations: SJLIFE, St. Jude Lifetime Cohort Study; EUR, European genetic ancestry; AFR, African genetic ancestry; m, meters; g, grams; kg, kilograms; Gy, Gray; CED, cyclophosphamide equivalent dose; OR, odds ratio; CI, confidence interval; P, p-value.

a. Adjusted ORs are based on multivariable models with the same set of adjustment covariates used in all genetic analyses (see previous rows), with the exception of a threshold-dose variable definition for alkylating agents (receipt of any alkylating agents vs. none).

**Supplementary Table 2:** Demographic and clinical characteristics of childhood cancer survivors in CCSS

Characteristic	CCSS original cohort (N=3902)		CCSS expansion cohort (N=2063)	
	N	%	N	%
Sex				
Male	1862	47.7	966	48.0
Female	2040	52.3	1097	52.0
Age at follow up (in years)				
<25	151	3.9	516	28.2
25-34	941	24.1	1100	54.3
35-44	1513	38.8	428	16.8
≥45	1297	33.2	19	0.7
Body mass index (kg/m <sup>2</sup> )				
≤25	1609	41.2	1002	48.8
>25 to ≤30	1268	32.5	599	29.6
>30 to ≤40	834	21.4	387	18.8
>40	191	4.9	75	2.9
Developed diabetes mellitus <sup>a</sup>	223	5.7	47	2.3
Age at cancer diagnosis (in years)				
<5	1536	39.4	721	40.4
5-9	848	21.7	485	26.1
10-14	819	21.0	520	20.5
≥15	699	17.9	337	13.0
Childhood cancer diagnosis				
Leukemias	1187	30.4	442	39.4
Central nervous system tumors	553	14.2	528	19.7
Hodgkin lymphoma	475	12.2	248	9.3
Non-Hodgkin lymphoma	306	7.8	191	7.1
Kidney tumors	405	10.4	203	7.6
Soft tissue sarcomas	362	9.3	107	4.0
Other	614	15.7	344	12.9
Cancer treatments				
Any abdominal radiation therapy (RT)	983	25.2	347	13.7
Any alkylating agents	1736	44.5	1083	52.7
Dosages: Median (IQR) <sup>b</sup>				
Abdominal RT tumor dose (cGy)	983	3000 (2000-3600)	347	2300 (1200-3550)
Alkylating agents (CED, mg/m <sup>2</sup> )	1736	8665 (4371-13919)	1083	7167 (3948-12187)

Abbreviations: CCSS, Childhood Cancer Survivor Study; IQR, interquartile range; RT, radiation therapy; CED, cyclophosphamide equivalent dose; mg, milligrams; m, meters; kg, kilograms. Percentages reflect primary cancer diagnosis sampling weights.

a. Self-reported diabetes mellitus requiring medication was evaluated in CCSS.

b. Treatment dose distribution statistics are provided for childhood cancer survivors who received any of the specified treatments and had non-missing dosage information.

**Supplementary Table 3: SJLIFE trans-ancestry meta-analysis results for top genetic associations with diabetes mellitus risk (100-kb window,  $P < 5 \times 10^{-6}$ )**

Chr	BP	EA	NEA	SJLIFE EUR			SJLIFE AFR			SJLIFE EUR + AFR meta-analysis		
				EAF	OR (95% CI)	P	EAF	OR (95% CI)	P	OR	P	P <sub>het</sub>
2	2434309	A	AAAATAAAATAAAATA AAATAAAAAC	0.10	1.99 (1.49-2.66)	$2.8 \times 10^{-6}$	0.17	2.30 (1.30-4.07)	$4.2 \times 10^{-3}$	2.05 (1.59-2.65)	$4.5 \times 10^{-8}$	0.66
2	2460867	C	T	0.13	1.96 (1.51-2.56)	$6.0 \times 10^{-7}$	0.03	4.14 (1.35-12.69)	0.013	2.04 (1.58-2.64)	$5.6 \times 10^{-8}$	0.20
2	2462940	A	G	0.13	1.95 (1.49-2.54)	$8.0 \times 10^{-7}$	0.03	4.24 (1.38-13.06)	0.012	2.03 (1.57-2.63)	$7.4 \times 10^{-8}$	0.19
8	50635641	T	C	0.15	1.98 (1.55-2.54)	$5.1 \times 10^{-8}$	0.38	0.54 (1.31-0.93)	0.027	1.60 (1.28-2)	$4.5 \times 10^{-5}$	$2.3 \times 10^{-5}$
8	50636999	C	T	0.15	1.98 (1.55-2.53)	$5.6 \times 10^{-8}$	0.38	0.54 (1.31-0.93)	0.027	1.59 (1.27-1.99)	$5.2 \times 10^{-5}$	$2.2 \times 10^{-5}$
8	50637285	A	T	0.15	1.99 (1.55-2.54)	$4.7 \times 10^{-8}$	0.37	0.57 (1.33-0.98)	0.042	1.61 (1.28-2.01)	$3.5 \times 10^{-5}$	$4.1 \times 10^{-5}$
8	50637444	A	G	0.15	1.98 (1.55-2.53)	$5.4 \times 10^{-8}$	0.38	0.54 (1.31-0.93)	0.026	1.59 (1.27-1.99)	$5.2 \times 10^{-5}$	$2.1 \times 10^{-5}$
8	50638825	G	A	0.15	1.99 (1.56-2.55)	$4.4 \times 10^{-8}$	0.38	0.53 (1.30-0.91)	0.022	1.59 (1.27-2)	$4.8 \times 10^{-5}$	$1.6 \times 10^{-5}$
8	50641552	A	G	0.15	1.94 (1.52-2.48)	$1.4 \times 10^{-7}$	0.37	0.55 (1.32-0.95)	0.032	1.57 (1.25-1.97)	$8.8 \times 10^{-5}$	$4.0 \times 10^{-5}$
8	50643118	T	G	0.15	1.94 (1.52-2.48)	$1.4 \times 10^{-7}$	0.37	0.55 (1.32-0.95)	0.032	1.57 (1.25-1.97)	$8.7 \times 10^{-5}$	$4.1 \times 10^{-5}$
8	50644980	A	G	0.18	1.73 (1.37-2.18)	$4.2 \times 10^{-6}$	0.40	0.58 (1.34-0.99)	0.046	1.45 (1.17-1.8)	$6.3 \times 10^{-4}$	$2.4 \times 10^{-4}$
8	50660409	G	GAAAA	0.21	1.68 (1.35-2.09)	$4.0 \times 10^{-6}$	0.47	0.44 (1.25-0.77)	$4.5 \times 10^{-3}$	1.41 (1.15-1.73)	$1.0 \times 10^{-3}$	$1.7 \times 10^{-5}$
8	50661918	G	C	0.30	1.66 (1.35-2.04)	$1.2 \times 10^{-6}$	0.64	0.59 (1.35-1.00)	0.048	1.45 (1.2-1.75)	$1.3 \times 10^{-4}$	$3.1 \times 10^{-4}$
8	50666979	A	G	0.21	1.74 (1.40-2.16)	$6.4 \times 10^{-7}$	0.51	0.57 (1.33-0.97)	0.037	1.48 (1.21-1.81)	$1.3 \times 10^{-4}$	$1.5 \times 10^{-4}$
8	50667110	A	G	0.21	1.71 (1.37-2.12)	$1.5 \times 10^{-6}$	0.60	0.57 (1.33-0.97)	0.039	1.46 (1.19-1.79)	$2.3 \times 10^{-4}$	$1.9 \times 10^{-4}$
8	50667850	G	T	0.21	1.71 (1.37-2.12)	$1.5 \times 10^{-6}$	0.61	0.57 (1.33-0.96)	0.035	1.45 (1.19-1.78)	$2.7 \times 10^{-4}$	$1.5 \times 10^{-4}$
8	50671413	C	T	0.21	1.72 (1.38-2.13)	$1.2 \times 10^{-6}$	0.61	0.56 (1.33-0.94)	0.029	1.45 (1.19-1.78)	$2.7 \times 10^{-4}$	$1.0 \times 10^{-4}$
8	50671938	A	G	0.21	1.69 (1.36-2.10)	$3.0 \times 10^{-6}$	0.19	0.44 (1.20-0.97)	0.043	1.53 (1.24-1.9)	$7.3 \times 10^{-5}$	$1.4 \times 10^{-3}$
8	50672410	T	A	0.21	1.72 (1.38-2.14)	$1.0 \times 10^{-6}$	0.61	0.55 (1.32-0.92)	0.024	1.46 (1.19-1.78)	$2.5 \times 10^{-4}$	$8.0 \times 10^{-5}$
8	50672830	C	T	0.21	1.73 (1.39-2.15)	$8.5 \times 10^{-7}$	0.51	0.57 (1.33-0.97)	0.037	1.48 (1.21-1.81)	$1.6 \times 10^{-4}$	$1.6 \times 10^{-4}$
8	50673224	G	A	0.21	1.71 (1.37-2.12)	$1.5 \times 10^{-6}$	0.61	0.55 (1.32-0.92)	0.024	1.45 (1.18-1.77)	$3.2 \times 10^{-4}$	$9.0 \times 10^{-5}$
8	50674706	G	A	0.21	1.72 (1.37-2.12)	$9.9 \times 10^{-7}$	0.61	0.55 (1.32-0.92)	0.024	1.46 (1.18-1.77)	$2.5 \times 10^{-4}$	$7.9 \times 10^{-5}$

Chr	BP	EA	NEA	SJLIFE EUR			SJLIFE AFR			SJLIFE EUR + AFR meta-analysis		
				EAF	OR (95% CI)	P	EAF	OR (95% CI)	P	OR	P	P <sub>het</sub>
					1.71 (1.39-2.14)			0.55 (1.32-0.92)		1.45 (1.19-1.78)		
8	50675283	G	A	0.21	1.71 (1.37-2.12)	1.4x10 <sup>-6</sup>	0.61	0.55 (1.32-0.92)	0.024	1.45 (1.18-1.77)	3.1x10 <sup>-4</sup>	8.9x10 <sup>-5</sup>
8	50676103	C	T	0.21	1.71 (1.37-2.12)	1.7x10 <sup>-6</sup>	0.19	0.44 (1.20-0.98)	0.044	1.55 (1.26-1.91)	4.4x10 <sup>-5</sup>	1.3x10 <sup>-3</sup>
8	50676751	G	T	0.21	1.71 (1.37-2.12)	1.6x10 <sup>-6</sup>	0.19	0.44 (1.20-0.98)	0.044	1.55 (1.26-1.91)	4.3x10 <sup>-5</sup>	1.3x10 <sup>-3</sup>
8	50681567	G	A	0.20	1.68 (1.34-2.09)	5.0x10 <sup>-6</sup>	0.61	0.57 (1.34-0.96)	0.034	1.42 (1.16-1.74)	7.4x10 <sup>-4</sup>	1.9x10 <sup>-4</sup>
19	22614854	G	A	0.05	2.26 (1.60-3.20)	4.1x10 <sup>-6</sup>	0.22	2.99 (1.66-5.37)	2.6x10 <sup>-4</sup>	2.43 (1.80-3.28)	5.7x10 <sup>-9</sup>	0.43
19	22614973	A	G	0.05	2.28 (1.61-3.24)	3.7x10 <sup>-6</sup>	0.16	2.23 (1.17-4.25)	0.014	2.27 (1.67-3.09)	1.7x10 <sup>-7</sup>	0.95
19	22615242	T	C	0.05	2.26 (1.59-3.19)	4.4x10 <sup>-6</sup>	0.22	2.64 (1.51-4.62)	6.6x10 <sup>-4</sup>	2.36 (1.76-3.17)	1.2x10 <sup>-8</sup>	0.64
19	22615378	A	G	0.05	2.26 (1.60-3.20)	4.3x10 <sup>-6</sup>	0.23	2.43 (1.41-4.20)	1.4x10 <sup>-3</sup>	2.31 (1.72-3.09)	2.3x10 <sup>-8</sup>	0.82
19	22615432	C	A	0.05	2.26 (1.60-3.20)	4.3x10 <sup>-6</sup>	0.23	2.43 (1.41-4.19)	1.5x10 <sup>-3</sup>	2.31 (1.72-3.09)	2.3x10 <sup>-8</sup>	0.83

Abbreviations: SJLIFE, St. Jude Lifetime Cohort Study; Chr, chromosome; BP, base position, GRCh38 (hg38) build; EA, effect (risk) allele; NEA, non-effect (reference) allele; EUR, European genetic ancestry; AFR, African genetic ancestry; OR, odds ratio; CI, confidence interval; P, p-value.

**Supplementary Table 4:** CCSS replication results for top genetic associations with risk for self-reported diabetes mellitus requiring oral medications or insulin (European genetic ancestry)

Chr	BP	EA	NEA	CCSS Original (N=223 cases)			CCSS Expansion (N=47 cases)		
				EAF	OR (95% CI)	P	EAF	OR (95% CI)	P
2	2460867	C	T	0.14	1.20 (0.91-1.59)	0.19	0.13	1.03 (0.52-2.07)	0.92
2	2462940	A	G	0.14	1.21 (0.92-1.60)	0.17	0.13	1.03 (0.52-2.07)	0.93
5	9843018	C	T				0.01	1.02 (0.13-7.77)	0.98
5	9841183	G	C	0.07	1.48 (1.06-2.07)	0.021	0.07	0.79 (0.31-2.03)	0.63
5	9853032	C	G				0.01	0.96 (0.13-7.36)	0.97
8	50635641	T	C	0.16	1.39 (1.09-1.78)	9.0x10 <sup>-3</sup>	0.15	0.95 (0.52-1.73)	0.88
8	50636999	C	T	0.16	1.39 (1.08-1.77)	9.4x10 <sup>-3</sup>	0.15	0.95 (0.52-1.74)	0.88
8	50637285	A	T	0.16	1.39 (1.08-1.77)	9.4x10 <sup>-3</sup>	0.15	0.95 (0.52-1.73)	0.87
8	50637444	A	G	0.16	1.39 (1.08-1.77)	9.4x10 <sup>-3</sup>	0.15	0.95 (0.52-1.74)	0.88
8	50638825	G	A	0.16	1.39 (1.08-1.77)	9.4x10 <sup>-3</sup>	0.15	0.95 (0.52-1.74)	0.88
8	50641552	A	G	0.16	1.39 (1.08-1.77)	9.4x10 <sup>-3</sup>	0.15	0.95 (0.52-1.74)	0.88
8	50643118	T	G	0.16	1.39 (1.08-1.77)	9.4x10 <sup>-3</sup>	0.15	0.95 (0.52-1.74)	0.88
8	50644980	A	G	0.18	1.26 (0.98-1.60)	0.07	0.18	1.00 (0.58-1.73)	1.00
8	50661918	G	C	0.69	0.89 (0.72-1.09)	0.26	0.70	0.79 (0.54-1.14)	0.21
8	50666979	A	G	0.22	1.20 (0.96-1.50)	0.11	0.22	1.56 (1.01-2.40)	0.045
8	50667110	A	G	0.22	1.21 (0.97-1.51)	0.10	0.22	1.56 (1.01-2.39)	0.044
8	50667850	G	T	0.22	1.21 (0.97-1.51)	0.10	0.22	1.33 (0.84-2.10)	0.23
8	50672410	T	A	0.22	1.21 (0.97-1.51)	0.10	0.22	1.32 (0.83-2.10)	0.23
8	50672830	C	T	0.22	1.21 (0.96-1.51)	0.10	0.22	1.33 (0.84-2.11)	0.23
8	50673224	G	A	0.22	1.21 (0.97-1.51)	0.10	0.22	1.32 (0.83-2.10)	0.23
8	50674706	G	A	0.22	1.21 (0.97-1.51)	0.10	0.22	1.32 (0.83-2.10)	0.23
8	50675283	G	A	0.22	1.21 (0.97-1.51)	0.10	0.22	1.43 (0.91-2.26)	0.12
8	50676103	C	T	0.22	1.2 (0.96-1.49)	0.12	0.21	1.34 (0.84-2.14)	0.22
8	50676751	G	T	0.22	1.19 (0.95-1.49)	0.13	0.21	1.45 (0.91-2.30)	0.11
8	50681567	G	A	0.21	1.17 (0.93-1.47)	0.18	0.20	1.54 (0.97-2.45)	0.07
19	22614854	G	A	0.06	1.17 (0.77-1.77)	0.46	0.06	0.76 (0.31-1.87)	0.55
19	22614973	A	G	0.06	1.17 (0.77-1.78)	0.46	0.06	0.77 (0.31-1.91)	0.57
19	22615242	T	C	0.06	1.17 (0.77-1.77)	0.46	0.06	0.76 (0.31-1.88)	0.55
19	22615378	A	G	0.06	1.17 (0.77-1.77)	0.46	0.06	0.76 (0.31-1.87)	0.55
19	22615432	C	A	0.06	1.17 (0.77-1.77)	0.46	0.06	0.76 (0.31-1.88)	0.55

Abbreviations: CCSS, Childhood Cancer Survivor Study; Chr, chromosome; BP, base position, GRCh38 (hg38) build; EA, effect (risk) allele; NEA, non-effect (reference) allele; OR, odds ratio; CI, confidence interval; P, p-value.

**Supplementary Table 5:** CCSS replication results for top genetic associations with self-reported insulin-dependent diabetes mellitus risk (European genetic ancestry)

Chr	BP	EA	NEA	CCSS Original (N=108 cases)				CCSS Expansion (N=25 cases)			
				EAF	OR	CI	P	EAF	OR	CI	P
2	2460867	C	T	0.14	1.45	1.00-2.10	0.047	0.13	0.91	0.38-2.14	0.82
2	2462940	A	G	0.14	1.49	1.03-2.14	0.033	0.13	0.91	0.38-2.14	0.82
8	50635641	T	C	0.16	1.56	1.12-2.17	7.9x10 <sup>-3</sup>	0.15	0.52	0.23-1.20	0.12
8	50636999	C	T	0.16	1.56	1.12-2.17	8.1x10 <sup>-3</sup>	0.15	0.52	0.22-1.20	0.13
8	50637285	A	T	0.16	1.56	1.12-2.17	8.1x10 <sup>-3</sup>	0.15	0.52	0.22-1.20	0.13
8	50637444	A	G	0.16	1.56	1.12-2.17	8.1x10 <sup>-3</sup>	0.15	0.52	0.22-1.20	0.13
8	50638825	G	A	0.16	1.56	1.12-2.17	8.1x10 <sup>-3</sup>	0.15	0.52	0.22-1.20	0.13
8	50641552	A	G	0.16	1.56	1.12-2.17	8.1x10 <sup>-3</sup>	0.15	0.52	0.22-1.20	0.13
8	50643118	T	G	0.16	1.56	1.12-2.17	8.1x10 <sup>-3</sup>	0.15	0.52	0.22-1.20	0.13
8	50644980	A	G	0.18	1.43	1.04-1.99	0.029	0.18	0.83	0.37-1.83	0.64
8	50661918	G	C	0.69	0.88	0.66-1.17	0.36	0.70	1.09	0.61-1.96	0.77
8	50666979	A	G	0.22	1.08	0.79-1.49	0.63	0.22	1.08	0.54-2.15	0.82
8	50667110	A	G	0.22	1.1	0.80-1.51	0.55	0.22	1.08	0.54-2.16	0.82
8	50667850	G	T	0.22	1.1	0.80-1.51	0.55	0.22	1.08	0.55-2.16	0.82
8	50672410	T	A	0.22	1.1	0.80-1.51	0.55	0.22	1.08	0.54-2.16	0.82
8	50672830	C	T	0.22	1.09	0.79-1.49	0.61	0.21	1.09	0.55-2.16	0.82
8	50673224	G	A	0.22	1.1	0.80-1.51	0.55	0.22	1.08	0.54-2.16	0.82
8	50674706	G	A	0.22	1.1	0.80-1.51	0.55	0.22	1.08	0.54-2.15	0.82
8	50675283	G	A	0.22	1.1	0.80-1.51	0.55	0.22	1.08	0.54-2.16	0.82
8	50676103	C	T	0.22	1.06	0.77-1.46	0.71	0.21	1.09	0.55-2.17	0.81
8	50676751	G	T	0.22	1.07	0.77-1.47	0.70	0.21	1.09	0.55-2.17	0.81
8	50681567	G	A	0.21	1.1	0.80-1.52	0.56	0.20	1.17	0.59-2.31	0.66
19	22614854	G	A	0.06	1.04	0.57-1.89	0.91	0.06	0.75	0.22-2.60	0.65
19	22614973	A	G	0.06	1.04	0.57-1.89	0.90	0.06	0.77	0.22-2.67	0.68
19	22615242	T	C	0.06	1.04	0.57-1.89	0.91	0.06	0.75	0.22-2.60	0.65
19	22615378	A	G	0.06	1.04	0.57-1.89	0.91	0.06	0.75	0.22-2.60	0.65
19	22615432	C	A	0.06	1.04	0.57-1.89	0.91	0.06	0.76	0.22-2.61	0.66

Abbreviations: CCSS, Childhood Cancer Survivor Study; Chr, chromosome; BP, base position, GRCh38 (hg38) build; EA, effect (risk) allele; NEA, non-effect (reference) allele; OR, odds ratio; CI, confidence interval; P, p-value.

**Supplementary Table 6:** Associations between index variants and self-reported and diagnosed type 2 diabetes risk in the general population (UK Biobank Study)

Variants	Self-reported T2D (2,292 cases)					
	Minor allele	UKB MAF	N	Beta	SE	P
2:2438081:AAAATAAAATAAAATAAAATAAAAC:A	A	0.20	361141	2.4x10 <sup>-4</sup>	2.4x10 <sup>-4</sup>	0.32
8:51551385:A:G	G	0.15	361141	9.0x10 <sup>-5</sup>	2.6x10 <sup>-4</sup>	0.73
19:22797656:A:G	G	0.06	361141	1.1x10 <sup>-3</sup>	4.1x10 <sup>-4</sup>	6.6x10 <sup>-3</sup>
5:9843018:T:C	Not present					
Variants	ICD T2D (888 cases)					
2:2438081:AAAATAAAATAAAATAAAATAAAAC:A	A	0.20	361194	4.4x10 <sup>-4</sup>	1.5x10 <sup>-4</sup>	3.6x10 <sup>-3</sup>
8:51551385:A:G	G	0.15	361194	2.5x10 <sup>-4</sup>	1.6x10 <sup>-4</sup>	0.12
19:22797656:A:G	G	0.06	361194	3.4x10 <sup>-4</sup>	2.6x10 <sup>-4</sup>	0.18
5:9843018:T:C	Not present					

Variants included in genes are annotated in chromosome:base position:non-effect allele:effect allele format, GRCh37 build. Self-reported T2D summary statistics were obtained from file 20002\_1223.gwas.imputed\_v3.both\_sexes.tsv.bgz and ICD-10-coded T2D summary statistics were obtained from file E4\_DM2.gwas.imputed\_v3.both\_sexes.tsv.bgz.

Abbreviations: UKB, UK Biobank Study; MAF, minor allele frequency; SE, standard error; P, p-value.

**Supplementary Table 7: Abdominal radiation therapy-stratified analysis of diabetes mellitus risk index SNPs in SJLIFE survivors of European and African ancestry**

	Chr	BP	EA	NEA	Stratification	N	OR	CI	P
	SJLIFE EUR	2	2434309	A	AAAATAAAATAAA ATAAAATAAAAAC	All survivors	3073	1.99	1.49-2.66
No abdominal RT						2512	2.07	1.48-2.89	2.3x10 <sup>-5</sup>
Any abdominal RT						561	1.79	1.00-3.23	0.052
5		9843018	C	T	All survivors	3102	2.47	1.23-4.98	0.011
					No abdominal RT	2536	2.55	1.10-5.94	0.029
					Any abdominal RT	566	2.01	0.56-7.24	0.29
8		50638825	G	A	All survivors	3100	1.99	1.56-2.55	4.4x10 <sup>-8</sup>
					No abdominal RT	2535	2.17	1.63-2.90	1.4x10 <sup>-7</sup>
					Any abdominal RT	565	1.63	0.99-2.68	0.055
19		22614854	G	A	All survivors	3100	2.26	1.60-3.20	4.1x10 <sup>-6</sup>
					No abdominal RT	2534	2.24	1.47-3.41	1.8x10 <sup>-4</sup>
					Any abdominal RT	566	2.37	1.23-4.57	0.010
	Chr	BP	EA	NEA	Stratification	N	OR	CI	P
	SJLIFE AFR	2	2434309	A	AAAATAAAATAAA ATAAAATAAAAAC	All survivors	556	2.30	1.30-4.07
No abdominal RT						454	2.69	1.35-5.39	5.1x10 <sup>-3</sup>
Any abdominal RT						102	12.10	0.98-148.94	0.052
5		9843018	C	T	All survivors	574	10.19	4.12-25.21	5.1x10 <sup>-7</sup>
					No abdominal RT	468	12.95	4.09-40.97	1.3x10 <sup>-5</sup>
					Any abdominal RT	106	90.85	2.25-3660.27	0.017
8		50638825	G	A	All survivors	573	0.53	0.30-0.91	0.022
					No abdominal RT	467	0.38	0.17-0.83	0.016
					Any abdominal RT	106	0.44	0.14-1.41	0.17
19		22614854	G	A	All survivors	573	2.99	1.66-5.37	2.6x10 <sup>-4</sup>
					No abdominal RT	467	2.72	1.28-5.78	9.6x10 <sup>-3</sup>
					Any abdominal RT	106	5.15	1.08-24.60	0.040

Abbreviations: SJLIFE, St. Jude Lifetime Cohort Study; Chr, chromosome; BP, base position, GRCh38 (hg38) build; EA, effect (risk) allele; NEA, non-effect (reference) allele; EUR, European genetic ancestry; AFR, African genetic ancestry; RT, radiation therapy; OR, odds ratio; CI, confidence interval; P, p-value.



**Supplementary Table 8:** Alkylating agent-stratified analysis of diabetes mellitus risk index SNPs in SJLIFE survivors of European and African ancestry

	Chr	BP	EA	NEA	Stratification	N	OR	CI	P
	SJLIFE EUR	2	2434309	A	AAAATAAAATAAA ATAAAATAAAAAC	All survivors	3073	1.99	1.49-2.66
No abdominal RT, no AA						1154	1.87	1.07-3.27	0.027
No abdominal RT, high AA (≥4000 mg/m <sup>2</sup> )						1046	2.37	1.45-3.87	6.0x10 <sup>-4</sup>
5		9843018	C	T	All survivors	3102	2.47	1.23-4.98	0.011
					No AA	1351	1.27	0.32-5.00	0.73
					Any AA	1751	3.32	1.44-7.68	5.0x10 <sup>-3</sup>
8		50638825	G	A	All survivors	3100	1.99	1.56-2.55	4.4x10 <sup>-8</sup>
					No abdominal RT, no AA	1168	3.17	1.96-5.12	2.5x10 <sup>-6</sup>
					No abdominal RT, high AA (≥4000 mg/m <sup>2</sup> )	1052	1.57	1.03-2.40	0.038
19		22614854	G	A	All survivors	3100	2.26	1.60-3.20	4.1x10 <sup>-6</sup>
					No abdominal RT, no AA	1169	1.63	0.74-3.57	0.22
					No abdominal RT, high AA (≥4000 mg/m <sup>2</sup> )	1051	3.32	1.91-5.79	2.3x10 <sup>-5</sup>
SJLIFE AFR	Chr	BP	EA	NEA	Stratification	N	OR	CI	P
	2	2434309	A	AAAATAAAATAAA ATAAAATAAAAAC	All survivors	556	2.30	1.30-4.07	4.2x10 <sup>-3</sup>
					No AA	267	2.39	0.99-5.76	0.053
					High AA (≥4000 mg/m <sup>2</sup> )	215	3.95	1.38-11.31	0.010
	5	9843018	C	T	All survivors	574	10.19	4.12-25.21	5.1x10 <sup>-7</sup>
					No AA	275	10.84	3.08-38.18	2.1x10 <sup>-4</sup>
					Any AA	299	17.81	3.46-91.60	5.7x10 <sup>-4</sup>
	8	50638825	G	A	All survivors	573	0.53	0.30-0.91	0.022
					No AA	274	0.62	0.29-1.34	0.23
					High AA (≥4000 mg/m <sup>2</sup> )	221	0.47	0.18-1.19	0.11
	19	22614854	G	A	All survivors	573	2.99	1.66-5.37	2.6x10 <sup>-4</sup>
					No AA	275	2.00	0.88-4.54	0.096
					High AA (≥4000 mg/m <sup>2</sup> )	220	5.74	1.99-16.54	1.2x10 <sup>-3</sup>

Abbreviations: SJLIFE, St. Jude Lifetime Cohort Study; Chr, chromosome; BP, base position, GRCh38 (hg38) build; EA, effect (risk) allele; NEA, non-effect (reference) allele; EUR, European genetic ancestry; AFR, African genetic ancestry; AA, alkylating agents; RT, radiation therapy; m, meters; mg, milligrams; OR, odds ratio; CI, confidence interval; P, p-value.

**Supplementary Table 9:** BMI-stratified analysis of the late diabetes risk index SNP in the chromosome 8 locus among SJLIFE and CCSS survivors

Chr	BP	EA	NEA	Study sample	BMI stratification	N	OR	95% CI	P
8	50638825	G	A	SJLIFE EUR	BMI>25 kg/m <sup>2</sup>	1941	2.23	1.72-2.89	1.8x10 <sup>-9</sup>
					BMI≤25 kg/m <sup>2</sup>	1159	0.90	0.42-1.94	0.80
				CCSS ORIGINAL (EUR)	BMI>25 kg/m <sup>2</sup>	2202	1.69	1.15-2.47	7.0x10 <sup>-3</sup>
					BMI≤25 kg/m <sup>2</sup>	1585	1.18	0.60-2.29	0.63

Abbreviations: SJLIFE, St. Jude Lifetime Cohort Study; CCSS, Childhood Cancer Survivor Study; Chr, chromosome; BP, base position, GRCh38 (hg38) build; EA, effect (risk) allele; NEA, non-effect (reference) allele; EUR, European genetic ancestry; BMI, body mass index; m, meters; kg, kilograms, OR, odds ratio; CI, confidence interval; P, p-value.

**Supplementary Table 10: Multi-ancestry T2D PRS (Mahajan et al.) quintile associations with diabetes mellitus risk in survivors**

Cohort	Treatment	N	Q	OR (95% CI)	P	Treatment	N	Q	OR (95% CI)	P
SJLIFE AFR	No AA	275	Q2	5.68 (0.82-39.25)	0.078	No abd RT	468	Q2	14.82 (1.49-147.11)	0.021
			Q3	1.19 (0.14-9.94)	0.87			Q3	4.43 (0.42-46.50)	0.21
			Q4	4.51 (0.68-29.77)	0.12			Q4	13.48 (1.32-137.80)	0.028
			Q5	4.48 (0.72-27.76)	0.11			Q5	18.49 (1.88-181.58)	0.012
	Any AA	299	Q2	4.30 (0.37-49.84)	0.24	Any abd RT	106	Q2	0.70 (0.03-18.68)	0.83
			Q3	3.52 (0.31-40.51)	0.31			Q3	1.29 (0.08-20.67)	0.86
			Q4	3.14 (0.24-41.70)	0.39			Q4	0.04 (0.00-8.94)	0.24
			Q5	13.85 (1.24-154.48)	0.033			Q5	4.28 (0.40-46.27)	0.23
Combined EUR	No AA, no abd RT	3561	Q2	1.59 (0.77-3.30)	0.21	No abd RT	7171	Q2	1.66 (1.02-2.70)	0.04
			Q3	2.61 (1.34-5.10)	4.9x10 <sup>-3</sup>			Q3	2.46 (1.56-3.89)	1.1x10 <sup>-4</sup>
			Q4	2.02 (1.00-4.05)	0.048			Q4	2.49 (1.57-3.94)	1.0x10 <sup>-4</sup>
			Q5	4.07 (2.16-7.69)	1.5x10 <sup>-5</sup>			Q5	4.90 (3.19-7.52)	3.6x10 <sup>-13</sup>
	Any AA, no abd RT	3610	Q2	1.66 (0.86-3.22)	0.13	Any abd RT	1896	Q2	0.95 (0.49-1.83)	0.87
			Q3	2.32 (1.23-4.38)	9.3x10 <sup>-3</sup>			Q3	1.96 (1.09-3.54)	0.025
			Q4	2.84 (1.52-5.29)	1.0x10 <sup>-3</sup>			Q4	2.67 (1.52-4.71)	6.7x10 <sup>-4</sup>
			Q5	5.86 (3.25-10.57)	4.4x10 <sup>-9</sup>			Q5	3.62 (2.08-6.30)	5.0x10 <sup>-6</sup>
	Higher-dose AA, no abd RT	2695	Q2	2.00 (0.88-4.53)	0.099	Higher-dose abd RT	1431	Q2	0.94 (0.47-1.90)	0.87
			Q3	2.82 (1.29-6.18)	9.3x10 <sup>-3</sup>			Q3	2.00 (1.07-3.76)	0.031
			Q4	3.44 (1.59-7.42)	1.7x10 <sup>-3</sup>			Q4	2.08 (1.11-3.88)	0.022
			Q5	8.43 (4.06-17.53)	1.1x10 <sup>-8</sup>			Q5	3.56 (1.97-6.43)	2.5x10 <sup>-5</sup>
SJLIFE EUR	No AA, no abd RT	1169	Q2	1.42 (0.50-4.00)	0.51	No abd RT	2536	Q2	1.46 (0.75-2.81)	0.26
			Q3	2.11 (0.81-5.51)	0.13			Q3	1.87 (1.00-3.52)	0.051
			Q4	1.55 (0.56-4.31)	0.4			Q4	2.36 (1.28-4.36)	5.9x10 <sup>-3</sup>
			Q5	3.74 (1.51-9.25)	4.4x10 <sup>-3</sup>			Q5	4.67 (2.62-8.32)	1.7x10 <sup>-7</sup>
	Any AA, no abd RT	1367	Q2	1.47 (0.61-3.51)	0.39	Any abd RT	566	Q2	1.73 (0.59-5.01)	0.32
			Q3	1.69 (0.72-3.98)	0.23			Q3	3.69 (1.33-10.25)	0.012
			Q4	2.97 (1.34-6.56)	7.3x10 <sup>-3</sup>			Q4	4.20 (1.54-11.47)	5.2x10 <sup>-3</sup>
			Q5	5.62 (2.60-12.15)	1.1x10 <sup>-5</sup>			Q5	6.44 (2.37-17.47)	2.6x10 <sup>-4</sup>
	Higher-dose AA, no abd RT	1052	Q2	1.86 (0.64-5.41)	0.25	Higher-dose abd RT	427	Q2	2.50 (0.75-8.31)	0.13
			Q3	2.33 (0.82-6.58)	0.11			Q3	4.57 (1.40-14.92)	0.012
			Q4	3.50 (1.33-9.26)	0.011			Q4	5.38 (1.66-17.44)	5.0x10 <sup>-3</sup>
			Q5	8.83 (3.41-22.84)	7.0x10 <sup>-6</sup>			Q5	7.92 (2.50-25.08)	4.4x10 <sup>-4</sup>
CCSS EUR	No AA, no abd RT	2392	Q2	1.71 (0.60-4.89)	0.32	No abd RT	4635	Q2	1.69 (0.81-3.52)	0.16
			Q3	3.06 (1.18-7.99)	0.022			Q3	2.93 (1.49-5.73)	1.8x10 <sup>-3</sup>
			Q4	2.43 (0.91-6.49)	0.077			Q4	2.35 (1.17-4.73)	0.016
			Q5	4.42 (1.77-11.08)	1.5x10 <sup>-3</sup>			Q5	5.01 (2.63-9.54)	9.3x10 <sup>-7</sup>
	Any AA, no abd RT	2243	Q2	1.64 (0.58-4.63)	0.35	Any abd RT	1330	Q2	0.52 (0.21-1.25)	0.14
			Q3	2.92 (1.12-7.64)	0.029			Q3	1.27 (0.61-2.66)	0.52
			Q4	2.31 (0.85-6.31)	0.10			Q4	1.94 (0.97-3.88)	0.059
			Q5	5.85 (2.32-14.73)	1.8x10 <sup>-4</sup>			Q5	2.46 (1.26-4.81)	8.6x10 <sup>-3</sup>
	Higher-dose AA, no abd RT	1643	Q2	1.72 (0.48-6.21)	0.41	Higher-dose abd RT	898	Q2	0.40 (0.15-1.07)	0.069
			Q3	3.06 (0.94-9.92)	0.062			Q3	1.19 (0.53-2.70)	0.67
			Q4	2.48 (0.72-8.54)	0.15			Q4	1.14 (0.51-2.55)	0.74
			Q5	7.23 (2.35-22.25)	5.6x10 <sup>-4</sup>			Q5	2.18 (1.05-4.54)	0.036

Abbreviations: SJLIFE, St. Jude Lifetime Cohort Study; CCSS, Childhood Cancer Survivor Study; EUR, European genetic ancestry; AFR, African genetic ancestry; AA, alkylating agents; abd RT, abdominal radiation therapy; Q, PRS quintile; OR, odds ratio; CI, confidence interval; P, p-value.

Higher dose AA defined by doses  $\geq 4,000$  mg/m<sup>2</sup>; higher doses of abd RT defined by doses  $\geq 2,000$  cGy.

**Supplementary Table 11:** Top genes enriched for rare pathogenic variants associated with diabetes mellitus risk in SJLIFE childhood cancer survivors of European genetic ancestry ( $P < 1 \times 10^{-3}$ )

Gene	Genetic variants	Discovery (N=1550; 127 cases)	Replication (N=1552; 134 cases)
		Burden test P	Burden test P
ENSG00000254469 ( <i>XNDC1N</i> )	chr11:71918924:G:A; chr11:71918995:TTTAGCAAGTTCTCTACAGGA:T	$8.5 \times 10^{-4}$	$9.4 \times 10^{-3}$
<i>ZNF655</i>	chr7:99563862:G:A; chr7:99563873:CCGCCTTCCCA:C	$7.1 \times 10^{-4}$	0.21

Variants included in genes are annotated in chromosome:base position:non-effect allele:effect allele format, GRCh38 build.

**Supplementary Table 12:** Single variant association test results for *XNDC1N* rare pathogenic/likely pathogenic variants

Rare variant association test type	Combined, SJLIFE European genetic ancestry (N=3102)		
	MAF (MAC)	OR (95% CI)	P
Single variant: chr11:71918924:G:A	0.002 (12)	6.30 (1.60-24.86)	8.6x10 <sup>-3</sup>
Single variant: chr11:71918995:TTAGCAAGTTCTCTACAGGA:T	0.001 (9)	13.42 (2.77-64.99)	1.2x10 <sup>-3</sup>

Abbreviations: MAF(C), minor allele frequency (count); OR, odds ratio; CI, confidence interval; P, p-value. Variants are annotated in chromosome:base position:non-effect allele:effect allele format, GRCh38 build.

**Supplementary Table 13:** Comparing *XNDC1N* rare pathogenic risk allele frequencies among healthy adults (gnomAD, N=16,465) and SJLIFE survivors without diabetes mellitus (N=2,841) and with diabetes mellitus (N=261)

<i>XNDC1N</i> rare pathogenic variants (rsid)	Study sample	MAF	Allele count	Allele number	OR (95% CI)	P
chr11:71918924:G:A (rs200142185)	gnomAD: EUR controls	0.0020	14	6850	Reference	
	EUR survivors without DM	0.0012	7	5704	0.60 (0.21-1.60)	0.38
	EUR survivors with DM	0.0096	5	522	4.72 (1.33-13.94)	8.8x10 <sup>-3</sup>
chr11:71918995:TTTAGCAAGTTCTCTACAGGA:T (rs771623613)	gnomAD: EUR controls	0.0003	2	6848	Reference	
	EUR survivors without DM	0.0009	5	5682	3.01 (0.49-31.66)	0.26
	EUR survivors with DM	0.0057	3	522	19.77 (2.26-236.43)	3.2x10 <sup>-3</sup>

Abbreviations: Genome Aggregation Database, gnomAD; EUR, European genetic ancestry; DM, diabetes mellitus; rsid, genetic variant identifier using dbSNP build 151; MAF, minor allele frequency; OR, odds ratio; CI, confidence interval; P, p-value. Variants are also shown in chr:base position:reference allele:effect allele format, where base position is provided in GRCh38 (hg38) build. P-values are from 2-sided Fisher's exact tests comparing allele counts, using the European (non-Finnish) control/biobank samples in gnomAD v3.1.2.

**Supplementary Table 14:** Index variant *in silico* functional annotations

rsid	Chr	BP	EA	NEA	Genes within 5 kb (closest)	Functional consequence	CADD	Regulatory function	meQTLs	eQTLs/sQTLs
rs143578296	2	2434309	A	AAAATAAAATAAAA TAAAATAAAAAC			6.5		Not available	Not available
rs13436710	5	9843018	C	T	<i>LINC02112</i>	Intron variant	3.3		Not available	Single-tissue sQTLs: <i>FAM173B</i> (brain-hypothalamus, EAdir=+)
rs6993752	8	50638825	G	A	<i>SNTG1</i>	Intron variant	0.1	CTCF binding site (ENSR00000854839); enhancer (ENSR00001137992)	<i>SNTG1</i> (EAdir=+, Probe=cg17991843)	
rs200142185	11	71918924	A	G	<i>XNDC1N</i>	Incomplete terminal codon variant, coding sequence variant; stop gained	40.0		Not available	Not available
rs771623613	11	71918995	T	TTTAGCAAG TTCTCTACAGGA	<i>XNDC1N</i>	Stop gained, frameshift variant	33.0		Not available	Not available
rs35017858	19	22614854	G	A	<i>LINC01785</i>	Downstream gene variant	5.0		Not available	Single-tissue eQTLs: <i>LINC01785</i> (thyroid, EAdir=-) <i>ZNF723P</i> (testis, EAdir=+) <i>ZNF257</i> (brain nucleus accumbens basal ganglia, EAdir=-) <i>ZNF492</i> (esophagus mucosa, cells cultured fibroblasts, testis, EAdir=-)

Major abbreviations: rsid, genetic variant identifier, dbSNP build 151; Chr, chromosome; BP: genomic base position, GRCh38 build; EA, effect allele; NEA, non-effect allele; QTL, quantitative trait loci; eQTL, expression QTL; sQTL, splicing QTL; meQTL methylation QTL.

- Functional consequences were annotated with Ensembl Variant Effect Predictor (VEP v99).
- Combined Annotation Dependent Depletion (CADD) scores reflect variant deleteriousness, PHRED-scaled such that scores >10 represent variants with the top 10% of CADD scores, >20 with top 1% of CADD scores, etc.
- Single-tissue eQTLs/sQTLs with FDR≤5% were based on BIOS QTL, eQTLGen, and GTEx v8, where top eQTL/sQTL genes are genes with at least one significant (FDR<5%) *cis*-SNP association.
- BIOS QTL was used to annotate significant (FDR<5%) meQTL variants.

**Supplementary Table 15: Chromatin state annotations in pancreas-, liver-, and fat-related epigenomes**

rsid	CHR	BP	Any promoter		Any enhancer		Any transcription		Any polycomb repressed	
			Overlapping variants	Relevant epigenomes	Overlapping variants	Relevant epigenomes	Overlapping variants	Relevant epigenomes	Overlapping variants	Relevant epigenomes
rs143578296	2	2434309							<b>chr2:2438081</b> , chr2:2464639, chr2:2466712	LIVER (E066,E118); PANCREAS (E087)
rs13436710	5	9843018							<b>chr5:9843130</b> , chr5:9853144, chr5:9841295	FAT (E063); LIVER (E066); PANCREAS (E087)
rs6993752	8	50638825	chr8:51555678, chr8:51554112	PANCREAS (E087)	chr8:51595171, chr8:51767887, chr8:51588663, chr8:51554112, chr8:51555678, chr8:51631199, chr8:51634561, chr8:51631400, chr8:51627432, chr8:51627574, <b>chr8:51551385</b> , chr8:51557540, chr8:51807451, chr8:51729352	LIVER (E066); PANCREAS (E087)				
rs35017858	19	22614854							chr19:22795650, chr19:22795896, <b>chr19:22797656</b> , chr19:22797775, chr19:22798044, chr19:22798180, chr19:22798234	PANCREAS (E087)
rs200142185	11	71918924					<b>chr11:71629970</b> , <b>chr11:71630041</b>	FAT (E023,E025,E063); LIVER (E066,E118); PANCREAS (E098)		
rs771623613	11	71918995								

Chromatin state annotations were taken from the 15-state (ChromHMM) model based on 12 epigenetic marks for 127 epigenomes (Roadmap Epigenomics Consortium). We used pooled chromatin state annotations for any promoter (states 1-2, 10), transcription (states 3-5), enhancer (states 6-7, 11-12), and polycomb repressed (states 13-14) states among relevant epigenomes (liver [E066, E118]; pancreas [E087, E098]; fat [E023, E025, E063]). Overlapping variants are annotated in Chr:BP format, GRCh37 build; bolded variants correspond to index variants.

Major abbreviations: rsid, genetic variant identifier, dbSNP build 151; Chr, chromosome; BP: genomic base position, GRCh38 build.