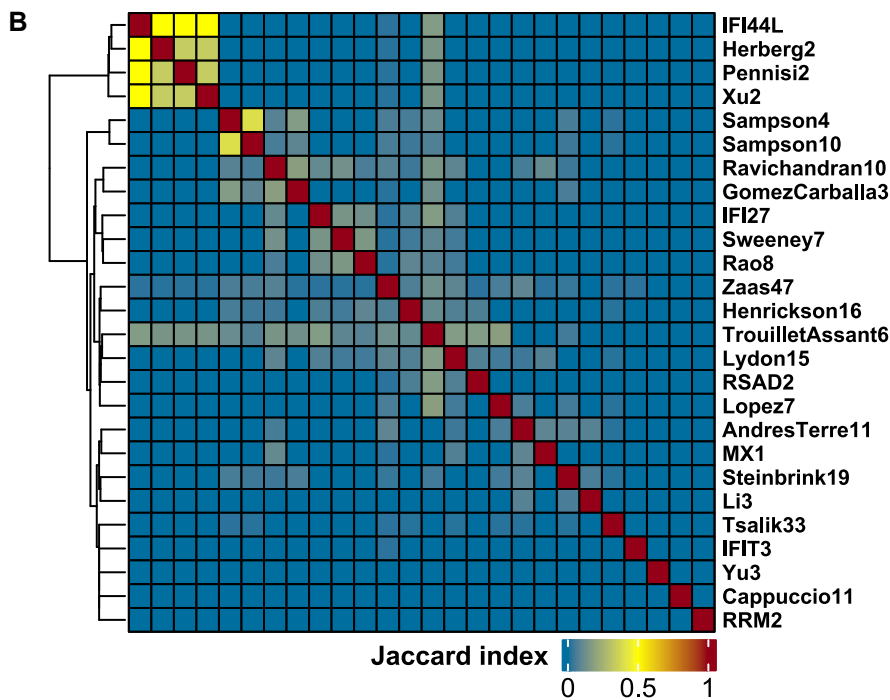
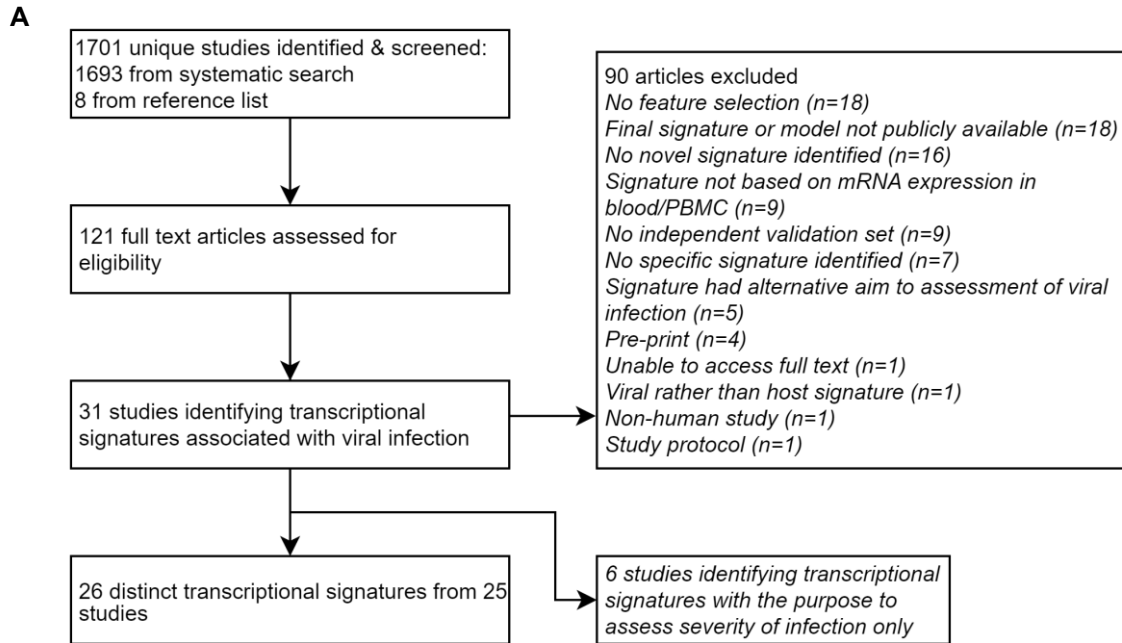


Supplementary Figures

Contents

Supplementary Figures	1
Supplementary Figure 1	2
Identification of blood transcriptional biomarkers of viral infection by systematic review and comparison of their gene composition.	2
Supplementary Figure 2	3
Principal component analysis of RNA sequencing data	3
Supplementary Figure 3	4
Temporal profiles of blood transcriptional signature scores in participants with and without replicative SARS-CoV-2 infection.	4
Supplementary Figure 4	5
Discrimination of participants with and without replicative SARS-CoV-2 infection by blood transcriptional biomarkers of viral infection.	5
Supplementary Figure 5.	6
Blood MX1 and IFI27 blood transcript correlation with PCR viral load measurements.....	6
Supplementary Figure 6.	7
ATAC sequencing reads at MX1 and IFI27 locus in unstimulated peripheral blood mononuclear cells. ...	7
Supplementary Figure 7.	8
Blood transcript discrimination of post infection time points from pre-infection samples in in unselected community acquired respiratory virus infections from GSE68310.	8

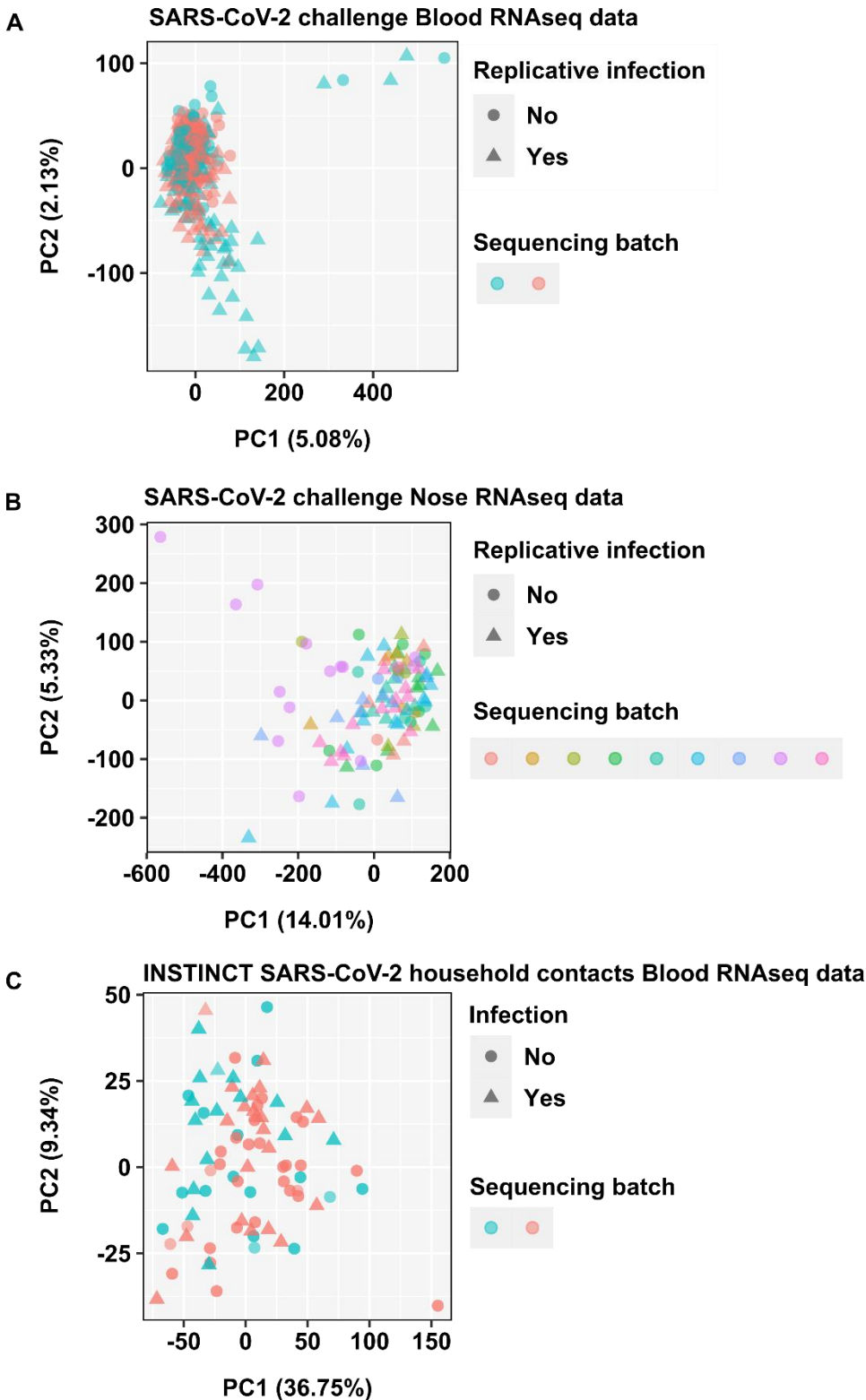
Supplementary Figure 1



Identification of blood transcriptional biomarkers of viral infection by systematic review and comparison of their gene composition.

(A) Consort diagram of systematic review for identification of blood transcriptional biomarkers of viral infection. **(B)** Jaccard index pairwise comparisons of gene composition for each blood transcriptional signature in a symmetrical matrix with complete linkage clustering.

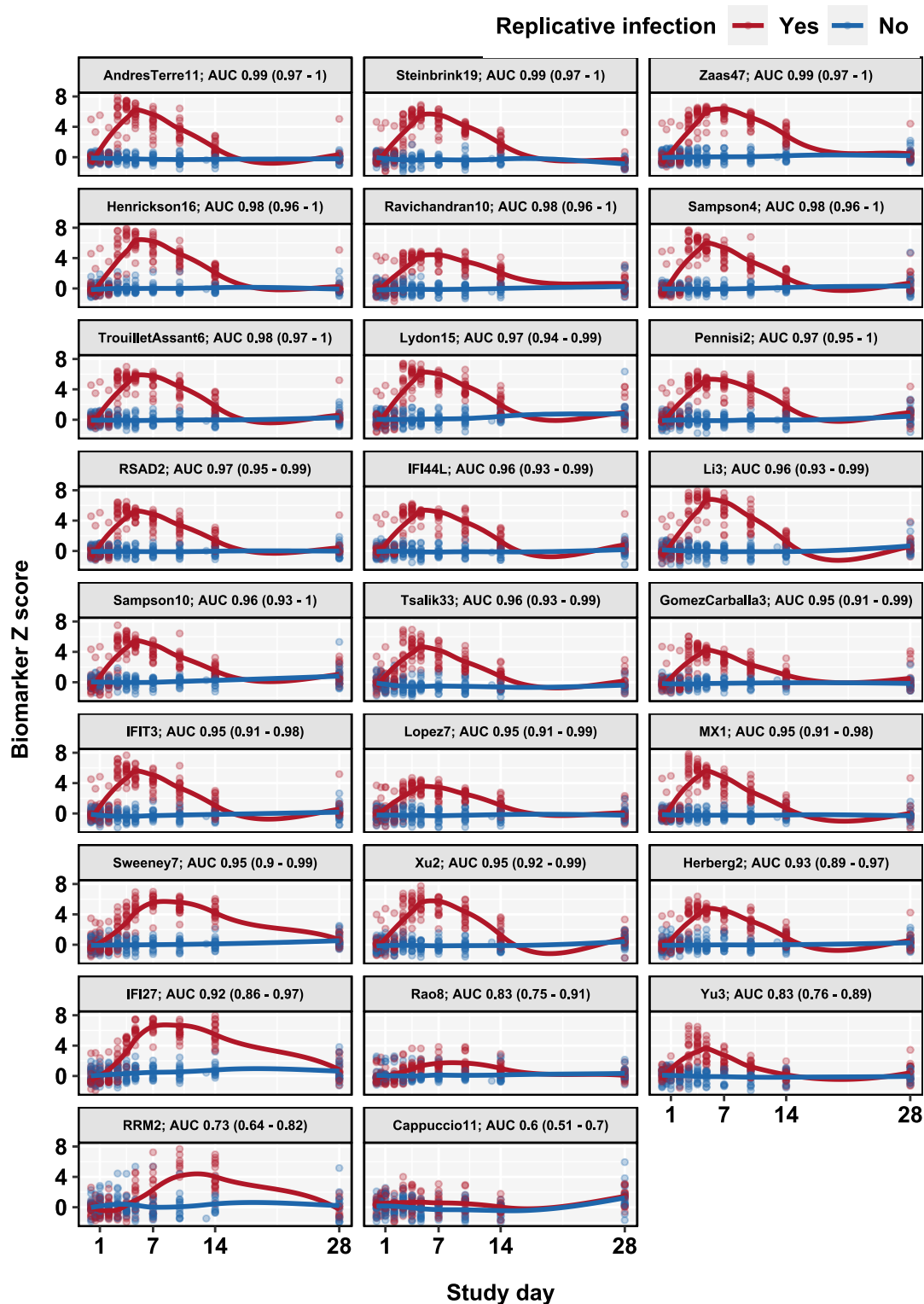
Supplementary Figure 2



Principal component analysis of RNA sequencing data

Principal component analysis of (A) blood and (B) nose RNA sequencing data from the SARS-CoV-2 challenge model, and (C) blood RNA sequencing data from the INSTINCT SARS-CoV-2 household contacts study, stratified by replicative infection and/or sample processing batch.

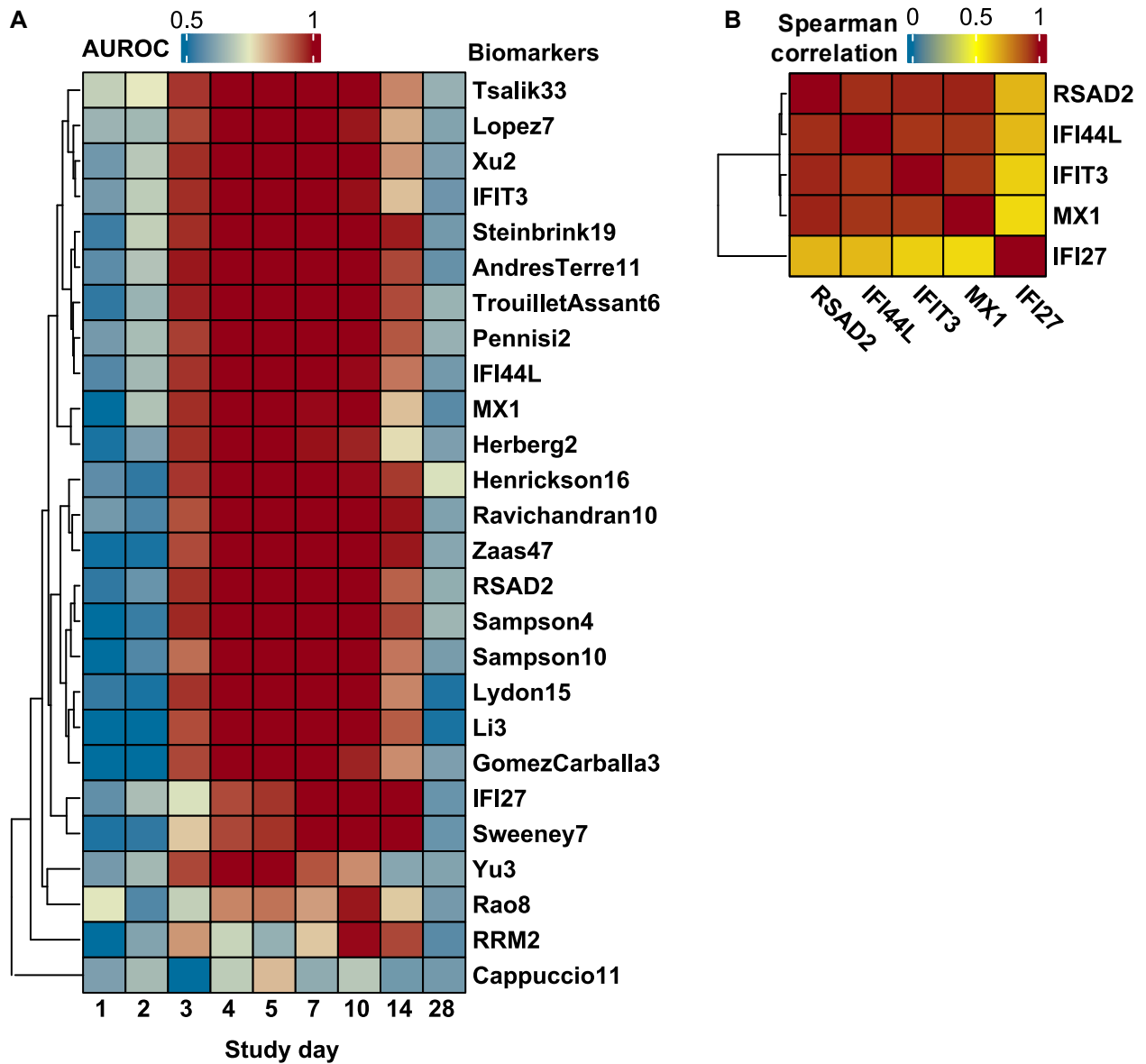
Supplementary Figure 3



Temporal profiles of blood transcriptional signature scores in participants with and without replicative SARS-CoV-2 infection.

Individual (data points) and loess smoothed summary (line $\pm 95\%$ CI) for standardised blood transcript levels of each blood transcriptional signature in sequential time points after challenge, ranked in descending order of AUROC ($\pm 95\%$ CI) for discrimination of participants with (N=18) and without (N=16) replicative viral infection using data from day 3, 7, 10 and 14.

Supplementary Figure 4

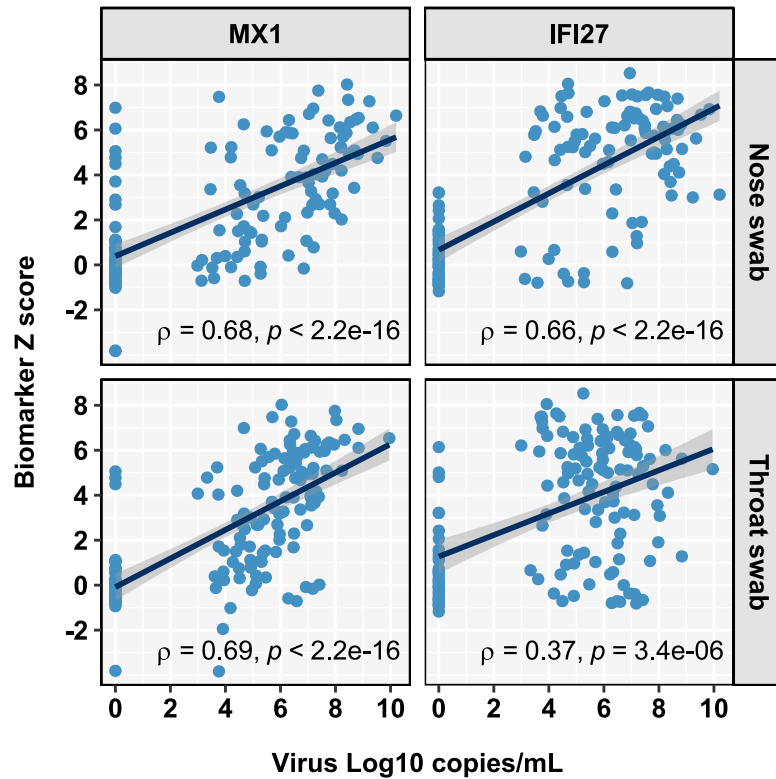


Discrimination of participants with and without replicative SARS-CoV-2 infection by blood transcriptional biomarkers of viral infection.

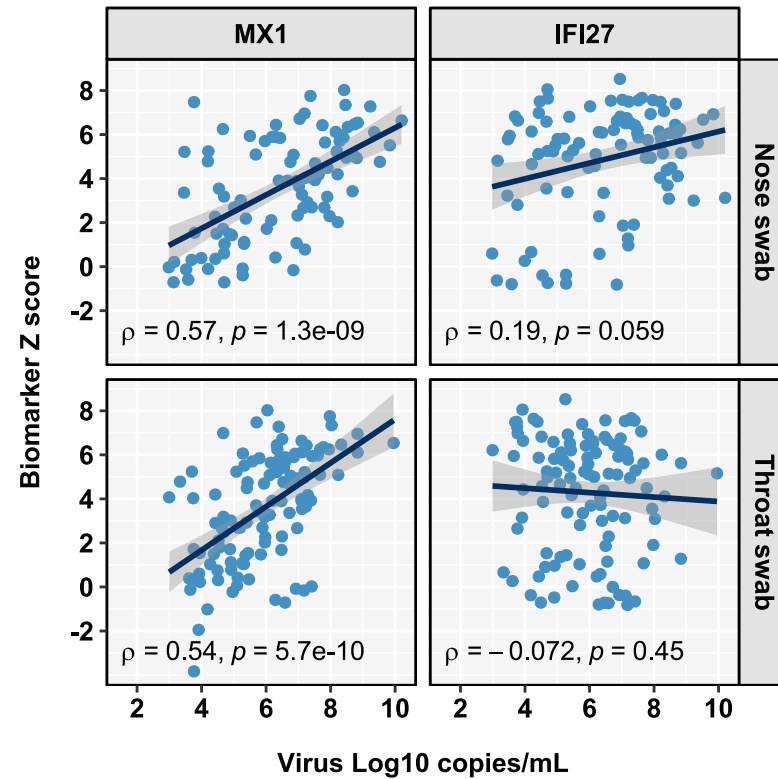
(A) Heatmap of AUROC point estimates for discrimination of participants with and without replicative SARS-CoV-2 infection by each blood transcriptional signature (rows) stratified by study day (columns). (B) Spearman correlation of selected interferon stimulated single gene blood transcriptional biomarker scores across all time points in participants with replicative SARS-CoV-2 infection (N=18).

Supplementary Figure 5.

A



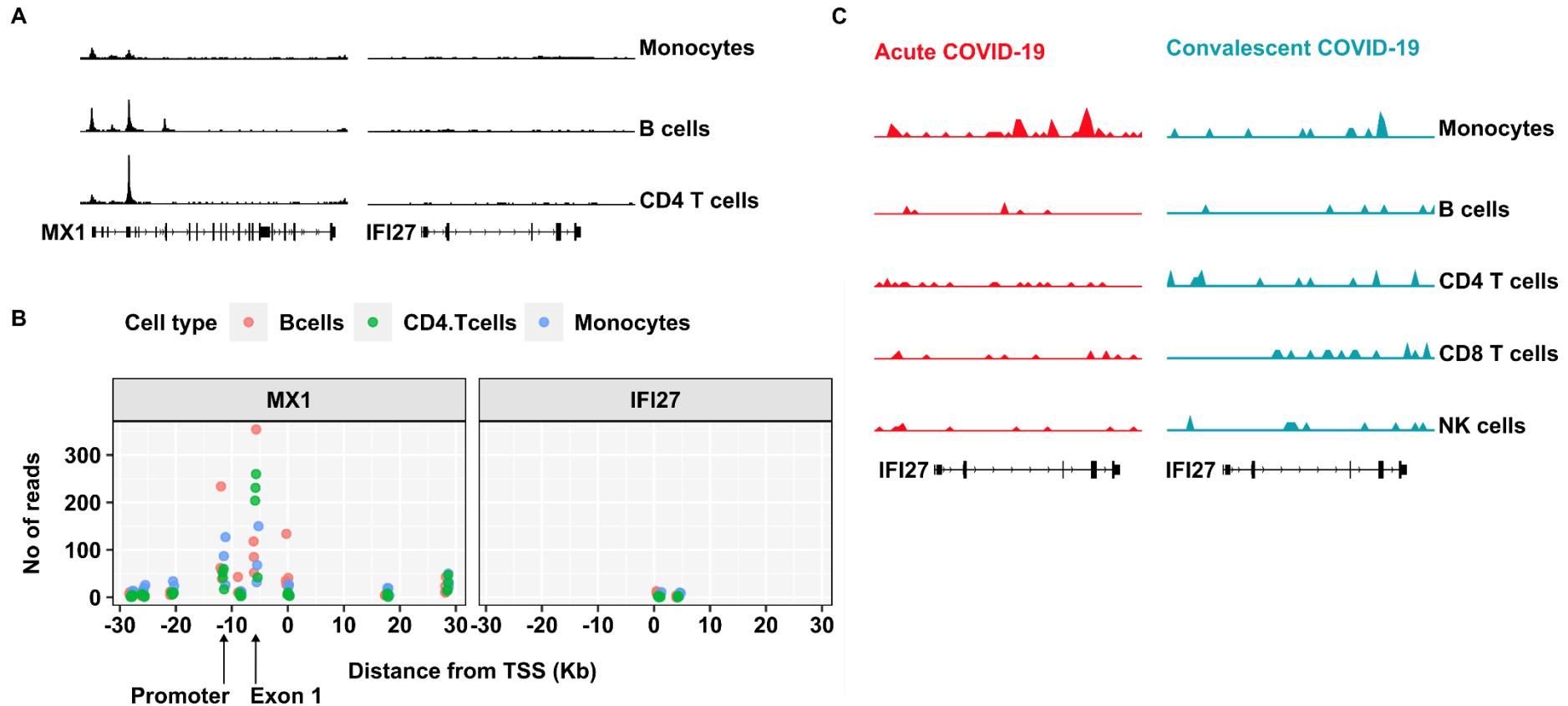
B



Blood MX1 and IFI27 blood transcript correlation with PCR viral load measurements.

Scatter plot and Spearman correlations of blood MX1 or IFI27 transcript levels with nose or throat PCR viral load measurements in participants with replicative SARS-CoV-2 infection (N=18) for all sampling time points (A) and for time points with detectable virus by PCR (B).

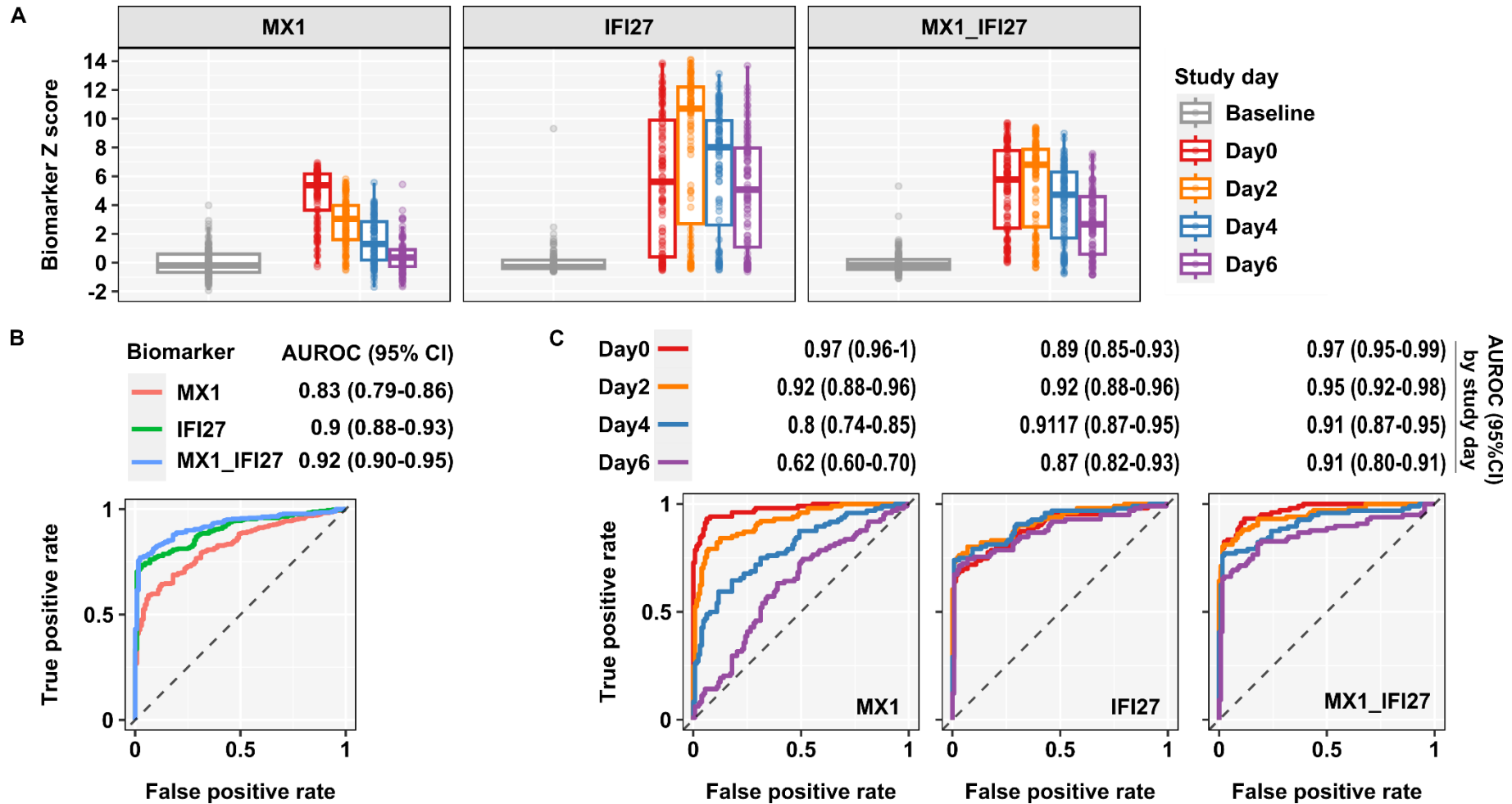
Supplementary Figure 6.



ATAC sequencing reads at MX1 and IFI27 locus in unstimulated peripheral blood mononuclear cells.

(A) Merged ATACseq read tracks (normalised ATAC signal range 0-1.8) from healthy donor sorted unstimulated monocytes (donor N=3), B-cells (N=4) and CD4 T effector cells (N=4) and (B) read counts are shown on the Y-axis, with genetic distance between the relevant peak and the gene's transcription start site (TSS) shown on the X-axis. (C) Merged single cell ATACseq read tracks at the *IFI27* locus (normalised ATAC signal range 0-0.04) for cell types indicated, in acute and convalescent samples from patients admitted to hospital with COVID-19 (N=8).

Supplementary Figure 7.



Blood transcript discrimination of post infection time points from pre-infection samples in unselected community acquired respiratory virus infections from GSE68310.

(A) Individual data points and box plot summaries of blood transcript levels of MX1, IFI27 and average of MX1 and IFI27 in pre-infection baseline samples (N=128) and sequential time points on alternate days from study day 0 (up to 48 hours after onset of symptoms) in unselected community acquired respiratory virus infections (N=102-106). (B) Receiver operating curve discrimination of all post-infection samples from pre-infection baseline samples by blood transcript levels of MX1, IFI27 and average of MX1 and IFI27 with AUROC point estimates ($\pm 95\%$ CI). (C) Receiver operating curve discrimination of post-infection samples stratified by study day from pre-infection baseline samples by blood transcript levels of MX1, IFI27 and average of MX1 and IFI27 with AUROC point estimates ($\pm 95\%$ CI).