

**Table 1S.** Number of people in each category by age group. Significant trend toward younger individuals reporting higher running volume, with more than 75% of the elite group falling between the ages of 18 and 35.

<b>Age Group</b>	<b>PRO</b>	<b>HVAM</b>	<b>MVAM</b>	<b>LVAM</b>	<b>SED</b>
18-35	53	434	1975	3452	1032
35-45	25	366	2537	3964	1431
45-55	4	218	1606	2469	1152
>55	NA	85	629	992	813

**Table 2S. Full running volume vs. blood biomarker results**

Biomarker	ANOVA p-value	Trend p-value	lowest mean	highest mean
Alb	<1e-16	<0.001	MVAM	PRO
ALT	<1e-16	<1e-16	SED	PRO
AST	<1e-16	<0.001	SED	PRO
B12	<0.001	<0.001	SED	PRO
BASOS	0.001	0.004	LVAM	PRO
BASOS_PCT	<0.001	0.156	SED	PRO
Ca	0.007	0.030	MVAM	PRO
Chol	<0.001	0.005	PRO	SED
CK	<1e-16	<1e-16	SED	PRO
Cor	<0.001	0.675	SED	PRO
D	<1e-16	0.424	SED	PRO
DHEAS	<0.001	<0.001	SED	PRO
EOS	<0.001	0.371	HVAM	SED
EOS_PCT	<0.001	0.137	HVAM	MVAM
FE	<0.001	0.119	SED	PRO
Fer	<1e-16	<1e-16	MVAM	SED
Fol	<1e-16	<0.001	SED	PRO
FT	<0.001	0.013	SED	PRO
GGT	<1e-16	<0.001	PRO	SED
Glu	0.087	0.184	PRO	SED
Hb	0.002	<0.001	MVAM	PRO
HCT	0.053	0.055	MVAM	PRO
HDL	<1e-16	<0.001	SED	PRO
HbA1c	<0.001	0.010	PRO	SED
hsCRP	<0.001	0.176	PRO	SED
K	<1e-16	<0.001	SED	LVAM
LDL	<0.001	0.006	PRO	SED
LYMPHS	<0.001	0.008	PRO	SED
LYMPHS_PCT	<1e-16	0.417	SED	PRO

Biomarker	ANOVA p-value	Trend p-value	lowest mean	highest mean
MCH	0.197	0.077	SED	PRO
MCHC	<1e-16	0.276	SED	PRO
MCV	<0.001	<0.001	SED	PRO
Mg	<0.001	0.276	PRO	SED
MONOS	<0.001	0.175	PRO	SED
MONOS_PCT	<0.001	0.137	SED	LVAM
MPV	0.058	0.089	SED	HVAM
Na	<1e-16	0.622	HVAM	SED
NEUT	<0.001	0.007	PRO	SED
NEUT_PCT	<0.001	0.764	PRO	SED
PLT	<0.001	0.058	LVAM	SED
RBC	0.016	0.880	MVAM	SED
RBC_Mg	<0.001	0.773	PRO	SED
RDW	<1e-16	0.002	PRO	SED
SHBG	<1e-16	0.004	SED	PRO
Tes	<1e-16	0.675	MVAM	LVAM
Tg	<1e-16	<1e-16	PRO	SED
TIBC	<0.001	0.417	LVAM	MVAM
TS	<1e-16	0.298	SED	PRO
WBC	<1e-16	<1e-16	PRO	SED

**Table 3S. 2S-MR results with BMI as the exposure and select biomarkers as outcomes**

Exposure-outcome	Method	Causal estimate			
		SNP	Beta	SE	<i>p</i>
BMI-hsCRP	MR Egger	233	0.440	0.054	1.74E-14
	Weighted median	233	0.385	0.022	7.56E-71
	Inverse variance weighted	233	0.352	0.018	6.78E-84
	Simple mode	233	0.403	0.067	8.11E-09
	Weighted mode	233	0.413	0.039	9.98E-22
Test for horizontal pleiotropy: MR Egger intercept = -0.00191, SE = 0.0109, <i>p</i> = 0.0816					
BMI-HbA1c	MR Egger	213	0.084	0.042	4.57E-02
	Weighted median	213	0.036	0.022	9.98E-02
	Inverse variance weighted	213	0.031	0.014	3.16E-02
	Simple mode	213	0.021	0.055	7.07E-01
	Weighted mode	213	0.080	0.036	2.88E-02
Test for horizontal pleiotropy: MR Egger intercept = -0.00115, SE = 0.000855, <i>p</i> = 0.178					
BMI-Tg	MR Egger	223	0.302	0.065	5.45E-06
	Weighted median	223	0.227	0.029	5.83E-15
	Inverse variance weighted	223	0.203	0.022	6.79E-20
	Simple mode	223	0.216	0.085	1.20E-02
	Weighted mode	223	0.239	0.049	2.45E-06
Test for horizontal pleiotropy: MR Egger intercept = -0.00220, SE = 0.00135, <i>p</i> = 0.105					
BMI-HDL	MR Egger	223	-0.341	0.068	1.13E-06
	Weighted median	223	-0.255	0.031	1.24E-16
	Inverse variance weighted	223	-0.265	0.023	3.28E-30
	Simple mode	223	-0.050	0.074	5.01E-01
	Weighted mode	223	-0.285	0.045	1.73E-09
Test for horizontal pleiotropy: MR Egger intercept = -0.00169, SE = 0.00141, <i>p</i> = 0.234					
BMI-WBC	MR Egger	298	-0.035	0.045	4.34E-01
	Weighted median	298	0.031	0.011	6.15E-03
	Inverse variance weighted	298	0.019	0.015	2.23E-01
	Simple mode	298	0.028	0.037	4.46E-01
	Weighted mode	298	0.054	0.030	7.28E-02

Test for horizontal pleiotropy: MR Egger intercept = -0.00118, SE = 0.000921, p = 0.202					
BMI-cortisol	MR Egger	246	-0.108	0.149	4.69E-01
	Weighted median	246	-0.068	0.075	3.63E-01
	Inverse variance weighted	246	-0.014	0.049	7.80E-01
	Simple mode	246	-0.115	0.207	5.78E-01
	Weighted mode	246	-0.173	0.130	1.86E-01
Test for horizontal pleiotropy: MR Egger intercept = -0.00202, SE = 0.00301, p = 0.503					
BMI-SHBG	MR Egger	492	-6.193	1.182	2.40E-07
	Weighted median	492	-6.065	0.383	1.67E-56
	Inverse variance weighted	492	-7.084	0.445	5.67E-57
	Simple mode	492	-6.315	1.277	1.06E-06
	Weighted mode	492	-5.343	0.777	1.88E-11
Test for horizontal pleiotropy: MR Egger intercept = -0.0156, SE = 0.0191, p = 0.416					
BMI-folate	MR Egger	492	-0.009	0.052	8.69E-01
	Weighted median	492	-0.023	0.029	4.17E-01
	Inverse variance weighted	492	-0.059	0.019	2.27E-03
	Simple mode	492	-0.011	0.091	9.03E-01
	Weighted mode	492	0.025	0.052	6.36E-01
Test for horizontal pleiotropy: MR Egger intercept = -0.000891, SE = 0.000836, p = 0.288					
BMI-RDW	MR Egger	300	0.245	0.055	1.18E-05
	Weighted median	300	0.169	0.021	1.67E-15
	Inverse variance weighted	300	0.162	0.019	1.08E-17
	Simple mode	300	0.192	0.060	1.53E-03
	Weighted mode	300	0.211	0.039	1.03E-07
Test for horizontal pleiotropy: MR Egger intercept = -0.00184, SE = 0.001134, p = 0.107					
BMI-Glu	MR Egger	64	0.107	0.035	3.05E-03
	Weighted median	64	0.088	0.019	5.11E-06
	Inverse variance weighted	64	0.093	0.015	3.08E-10
	Simple mode	64	0.094	0.035	9.83E-03
	Weighted mode	64	0.089	0.022	1.87E-04
Test for horizontal pleiotropy: MR Egger intercept = -0.0003952, SE = 0.00084453, p = 0.6415					
BMI-Fer	MR Egger	206	0.008	0.112	9.41E-01

	Weighted median	206	0.108	0.057	5.91E-02
	Inverse variance weighted	206	0.132	0.039	6.44E-04
	Simple mode	206	0.196	0.180	2.77E-01
	Weighted mode	206	0.012	0.114	9.17E-01
Test for horizontal pleiotropy: MR Egger intercept = 0.002695, SE = 0.002299, p = 0.242					
BMI-Tes	MR Egger	205	-0.262	0.112	2.05E-02
	Weighted median	205	-0.337	0.060	1.82E-08
	Inverse variance weighted	205	-0.147	0.041	3.61E-04
	Simple mode	205	-0.559	0.153	3.25E-04
	Weighted mode	205	-0.440	0.091	2.71E-06
Test for horizontal pleiotropy: MR Egger intercept = 0.002656, SE = 0.002407, p = 0.271					
BMI-Baso	MR Egger	304	-0.006	0.038	8.81E-01
	Weighted median	304	-0.036	0.018	4.70E-02
	Inverse variance weighted	304	-0.009	0.013	4.90E-01
	Simple mode	304	-0.069	0.055	2.05E-01
	Weighted mode	304	-0.059	0.042	1.63E-01
Test for horizontal pleiotropy: MR Egger intercept = -7.13E-05, SE = 0.000785, p = 0.928					
BMI-Mono	MR Egger	298	-0.097	0.045	3.07E-02
	Weighted median	298	-0.015	0.011	1.82E-01
	Inverse variance weighted	298	-0.018	0.015	2.37E-01
	Simple mode	298	-0.004	0.035	9.18E-01
	Weighted mode	298	-0.016	0.023	4.84E-01
Test for horizontal pleiotropy: MR Egger intercept = 0.001740, SE = 0.000926404, p = 0.0613					
BMI-MCV	MR Egger	300	-0.108	0.147	4.62E-01
	Weighted median	300	-0.141	0.079	7.48E-02
	Inverse variance weighted	300	-0.087	0.049	7.42E-02
	Simple mode	300	-0.097	0.229	6.71E-01
	Weighted mode	300	-0.147	0.158	3.53E-01
Test for horizontal pleiotropy: MR Egger intercept = 0.000459, SE = 0.003011, p = 0.879					
BMI-Lymph	MR Egger	298	-0.076	0.048	1.11E-01
	Weighted median	298	-0.026	0.012	3.15E-02
	Inverse variance weighted	298	0.020	0.016	2.20E-01
	Simple mode	298	-0.028	0.038	4.64E-01
	Weighted mode	298	-0.048	0.022	3.20E-02
Test for horizontal pleiotropy: MR Egger intercept = 0.002111, SE = 0.0009811, p = 0.032161341					

**Table 4S. 2S-MR results with BMI with biomarkers as exposures and BMI as outcome to assess reverse causality**

<b>id.exposure</b>	<b>id.outcome</b>	<b>outcome</b>	<b>exposure</b>	<b>method</b>	<b>nsnp</b>	<b>b</b>	<b>se</b>	<b>pval</b>
<b>ebi-a-GCST004631</b>	ukb-a-248	Body mass index (BMI)    id:ukb-a-248	Basophil percentage of white cells    id:ebi-a-GCST004631	MR Egger	55	0.02850274	0.03058163	0.35555179
<b>ebi-a-GCST004631</b>	ukb-a-248	Body mass index (BMI)    id:ukb-a-248	Basophil percentage of white cells    id:ebi-a-GCST004631	Weighted median	55	0.01115946	0.01802141	0.53576264
<b>ebi-a-GCST004631</b>	ukb-a-248	Body mass index (BMI)    id:ukb-a-248	Basophil percentage of white cells    id:ebi-a-GCST004631	Inverse variance weighted	55	-0.0133255	0.01548404	0.38946137
<b>ebi-a-GCST004631</b>	ukb-a-248	Body mass index (BMI)    id:ukb-a-248	Basophil percentage of white cells    id:ebi-a-GCST004631	Simple mode	55	0.00553647	0.03733532	0.88266604
<b>ebi-a-GCST004631</b>	ukb-a-248	Body mass index (BMI)    id:ukb-a-248	Basophil percentage of white cells    id:ebi-a-GCST004631	Weighted mode	55	-0.0005482	0.02054445	0.97881084
<b>id.exposure</b>	<b>id.outcome</b>	<b>outcome</b>	<b>exposure</b>	<b>method</b>	<b>nsnp</b>	<b>b</b>	<b>se</b>	<b>pval</b>
<b>ieu-a-1012</b>	ukb-a-248	Body mass index (BMI)    id:ukb-a-248	Plasma cortisol    id:ieu-a-1012	Wald ratio	1	-0.0162841	0.0285215	0.56803913
<b>id.exposure</b>	<b>id.outcome</b>	<b>outcome</b>	<b>exposure</b>	<b>method</b>	<b>nsnp</b>	<b>b</b>	<b>se</b>	<b>pval</b>
<b>ieu-a-1050</b>	ukb-a-248	Body mass index (BMI)    id:ukb-a-248	Ferritin    id:ieu-a-1050	MR Egger	4	-0.0692185	0.02954547	0.14388806
<b>ieu-a-1050</b>	ukb-a-248	Body mass index (BMI)    id:ukb-a-248	Ferritin    id:ieu-a-1050	Weighted median	4	-0.0458501	0.01819113	0.01171994
<b>ieu-a-1050</b>	ukb-a-248	Body mass index (BMI)    id:ukb-a-248	Ferritin    id:ieu-a-1050	Inverse variance weighted	4	-0.0401901	0.01571805	0.01055975
<b>ieu-a-1050</b>	ukb-a-248	Body mass index (BMI)    id:ukb-a-248	Ferritin    id:ieu-a-1050	Simple mode	4	-0.040832	0.02570683	0.21040991
<b>ieu-a-1050</b>	ukb-a-248	Body mass index (BMI)    id:ukb-a-248	Ferritin    id:ieu-a-1050	Weighted mode	4	-0.0508659	0.01904314	0.07562034

<b>id.exposure</b>	<b>id.outcome</b>	<b>outcome</b>	<b>exposure</b>	<b>method</b>	<b>nsnp</b>	<b>b</b>	<b>se</b>	<b>pval</b>
<b>ukb-b-11349</b>	ieub-40	body mass index    id:ieub-40	Folate    id:ukb-b-11349	Wald ratio	1	0.04546597	0.058838	0.439683
							32	8
<b>id.exposure</b>	<b>id.outcome</b>	<b>outcome</b>	<b>exposure</b>	<b>method</b>	<b>nsnp</b>	<b>b</b>	<b>se</b>	<b>pval</b>
<b>ieub-114</b>	ukb-a-248	Body mass index (BMI)    id:ukb-a-248	Fasting glucose    id:ieub-114	MR Egger	30	-0.0453952	0.113428	0.692038
							53	95
<b>ieub-114</b>	ukb-a-248	Body mass index (BMI)    id:ukb-a-248	Fasting glucose    id:ieub-114	Weighted median	30	0.00266784	0.031883	0.933316
							98	16
<b>ieub-114</b>	ukb-a-248	Body mass index (BMI)    id:ukb-a-248	Fasting glucose    id:ieub-114	Inverse variance weighted	30	-0.0341858	0.052964	0.518637
							48	21
<b>ieub-114</b>	ukb-a-248	Body mass index (BMI)    id:ukb-a-248	Fasting glucose    id:ieub-114	Simple mode	30	-0.01322	0.067068	0.845115
							73	55
<b>ieub-114</b>	ukb-a-248	Body mass index (BMI)    id:ukb-a-248	Fasting glucose    id:ieub-114	Weighted mode	30	0.00016512	0.029158	0.995520
							44	48
<b>id.exposure</b>	<b>id.outcome</b>	<b>outcome</b>	<b>exposure</b>	<b>method</b>	<b>nsnp</b>	<b>b</b>	<b>se</b>	<b>pval</b>
<b>ieua-270</b>	ukb-a-248	Body mass index (BMI)    id:ukb-a-248	Haemoglobin concentration    id:ieua-270	MR Egger	15	0.00144021	0.07587	0.98514
							258	372
<b>ieua-270</b>	ukb-a-248	Body mass index (BMI)    id:ukb-a-248	Haemoglobin concentration    id:ieua-270	Weighted median	15	0.01307681	0.02023	0.51805
							195	628
<b>ieua-270</b>	ukb-a-248	Body mass index (BMI)    id:ukb-a-248	Haemoglobin concentration    id:ieua-270	Inverse variance weighted	15	-0.0334432	0.02660	0.20879
							806	683
<b>ieua-270</b>	ukb-a-248	Body mass index (BMI)    id:ukb-a-248	Haemoglobin concentration    id:ieua-270	Simple mode	15	-0.1129022	0.05448	0.05720
							673	502
<b>ieua-270</b>	ukb-a-248	Body mass index (BMI)    id:ukb-a-248	Haemoglobin concentration    id:ieua-270	Weighted mode	15	0.01648048	0.02138	0.45363
							074	255

id.exposure	id.outcome	outcome	exposure	method	nsnp	b	se	pval
ieu-b-103	ukb-a-248	Body mass index (BMI)    id:ukb-a-248	HbA1C    id:ieu-b-103	MR Egger	11	0.01268313	0.08396	0.88325
ieu-b-103	ukb-a-248	Body mass index (BMI)    id:ukb-a-248	HbA1C    id:ieu-b-103	Weighted median	11	-0.0069654	0.03248	0.83019
ieu-b-103	ukb-a-248	Body mass index (BMI)    id:ukb-a-248	HbA1C    id:ieu-b-103	Inverse variance weighted	11	0.0283815	0.061	0.41017
ieu-b-103	ukb-a-248	Body mass index (BMI)    id:ukb-a-248	HbA1C    id:ieu-b-103	Simple mode	11	-0.0257779	0.064	0.69075
ieu-b-103	ukb-a-248	Body mass index (BMI)    id:ukb-a-248	HbA1C    id:ieu-b-103	Weighted mode	11	-0.0208929	0.06293	0.60514
ieu-b-103	ukb-a-248	Body mass index (BMI)    id:ukb-a-248	HbA1C    id:ieu-b-103	Weighted mode	11	-0.0208929	0.067	0.756
id.exposure	id.outcome	outcome	exposure	method	nsnp	b	se	pval
ieu-a-275	ukb-a-248	Body mass index (BMI)    id:ukb-a-248	Red blood cell count    id:ieu-a-275	MR Egger	26	0.26135491	0.14952	0.09326
ieu-a-275	ukb-a-248	Body mass index (BMI)    id:ukb-a-248	Red blood cell count    id:ieu-a-275	Weighted median	26	0.08455861	0.0437	0.06832
ieu-a-275	ukb-a-248	Body mass index (BMI)    id:ukb-a-248	Red blood cell count    id:ieu-a-275	Inverse variance weighted	26	-0.0072778	0.04638	0.89849
ieu-a-275	ukb-a-248	Body mass index (BMI)    id:ukb-a-248	Red blood cell count    id:ieu-a-275	Simple mode	26	0.09054068	0.05705	0.26246
ieu-a-275	ukb-a-248	Body mass index (BMI)    id:ukb-a-248	Red blood cell count    id:ieu-a-275	Weighted mode	26	0.09962869	0.04750	0.04626



id.exposure	id.outcome	outcome	exposure	method	n SNP	b	se	pval
ebi-a-GCST005068	ieu-b-40	body mass index    id:ieu-b-40	LDL cholesterol    id:ebi-a-GCST005068	MR Egger	4	0.01267769	0.05816 618	0.84767 998
ebi-a-GCST005068	ieu-b-40	body mass index    id:ieu-b-40	LDL cholesterol    id:ebi-a-GCST005068	Weighted median	4	-0.0332107	0.01134 854	0.00342 875
ebi-a-GCST005068	ieu-b-40	body mass index    id:ieu-b-40	LDL cholesterol    id:ebi-a-GCST005068	Inverse variance weighted	4	-0.0320938	0.00863 712	0.00020 257
ebi-a-GCST005068	ieu-b-40	body mass index    id:ieu-b-40	LDL cholesterol    id:ebi-a-GCST005068	Simple mode	4	-0.036639	0.01673 254	0.11628 833
ebi-a-GCST005068	ieu-b-40	body mass index    id:ieu-b-40	LDL cholesterol    id:ebi-a-GCST005068	Weighted mode	4	-0.034971	0.01482 963	0.09956 398
id.exposure	id.outcome	outcome	exposure	method	n SNP	b	se	pval
ebi-a-GCST90002336	ukb-a-248	Body mass index (BMI)    id:ukb-a-248	Mean corpuscular volume    id:ebi-a-GCST90002336	MR Egger	9	0.01627788	0.03256 415	0.63249 338
ebi-a-GCST90002336	ukb-a-248	Body mass index (BMI)    id:ukb-a-248	Mean corpuscular volume    id:ebi-a-GCST90002336	Weighted median	9	-0.0169769	0.01096 864	0.12167 813
ebi-a-GCST90002336	ukb-a-248	Body mass index (BMI)    id:ukb-a-248	Mean corpuscular volume    id:ebi-a-GCST90002336	Inverse variance weighted	9	-0.0212777	0.01246 612	0.08785 201
ebi-a-GCST90002336	ukb-a-248	Body mass index (BMI)    id:ukb-a-248	Mean corpuscular volume    id:ebi-a-GCST90002336	Simple mode	9	-0.0220168	0.01637 922	0.21575 632
ebi-a-GCST90002336	ukb-a-248	Body mass index (BMI)    id:ukb-a-248	Mean corpuscular volume    id:ebi-a-GCST90002336	Weighted mode	9	-0.0231087	0.01392 193	0.13552 035

id.exposure	id.outcome	outcome	exposure	method	nsnp	b	se	pval
ieu-a-1008	ukb-a-248	Body mass index (BMI)    id:ukb-a-248	Platelet count    id:ieu-a-1008	MR Egger	32	-0.0006727	0.00070 143	0.34517 459
ieu-a-1008	ukb-a-248	Body mass index (BMI)    id:ukb-a-248	Platelet count    id:ieu-a-1008	Weighted median	32	0.00013472	0.00021 428	0.52954 228
ieu-a-1008	ukb-a-248	Body mass index (BMI)    id:ukb-a-248	Platelet count    id:ieu-a-1008	Inverse variance weighted	32	-0.0003268	0.00024 878	0.18895 678
ieu-a-1008	ukb-a-248	Body mass index (BMI)    id:ukb-a-248	Platelet count    id:ieu-a-1008	Simple mode	32	9.63E-05	0.00034 761	0.78352 525
ieu-a-1008	ukb-a-248	Body mass index (BMI)    id:ukb-a-248	Platelet count    id:ieu-a-1008	Weighted mode	32	0.00011659	0.00024 456	0.63688 891
id.exposure	id.outcome	outcome	exposure	method	nsnp	b	se	pval
ieu-a-275	ukb-a-248	Body mass index (BMI)    id:ukb-a-248	Red blood cell count    id:ieu-a-275	MR Egger	26	0.26135491	0.14952 437	0.09326 378
ieu-a-275	ukb-a-248	Body mass index (BMI)    id:ukb-a-248	Red blood cell count    id:ieu-a-275	Weighted median	26	0.08455861	0.04591 029	0.06550 111
ieu-a-275	ukb-a-248	Body mass index (BMI)    id:ukb-a-248	Red blood cell count    id:ieu-a-275	Inverse variance weighted	26	-0.0072778	0.05705 404	0.89849 796
ieu-a-275	ukb-a-248	Body mass index (BMI)    id:ukb-a-248	Red blood cell count    id:ieu-a-275	Simple mode	26	0.09054068	0.07653 474	0.24793 721
ieu-a-275	ukb-a-248	Body mass index (BMI)    id:ukb-a-248	Red blood cell count    id:ieu-a-275	Weighted mode	26	0.09962869	0.04605 998	0.04030 183

id.exposure	id.outcome	outcome	exposure	method	nsnp	b	se	pval
ebi-a-GCST006804	ukb-a-248	Body mass index (BMI)    id:ukb-a-248	Red cell distribution width    id:ebi-a-GCST006804	MR Egger	122	-0.0341912	0.03423066	0.31987855
ebi-a-GCST006804	ukb-a-248	Body mass index (BMI)    id:ukb-a-248	Red cell distribution width    id:ebi-a-GCST006804	Weighted median	122	0.01563428	0.00970492	0.10718764
ebi-a-GCST006804	ukb-a-248	Body mass index (BMI)    id:ukb-a-248	Red cell distribution width    id:ebi-a-GCST006804	Inverse variance weighted	122	0.0300081	0.01723486	0.08166104
ebi-a-GCST006804	ukb-a-248	Body mass index (BMI)    id:ukb-a-248	Red cell distribution width    id:ebi-a-GCST006804	Simple mode	122	0.01857783	0.02026892	0.3611926
ebi-a-GCST006804	ukb-a-248	Body mass index (BMI)    id:ukb-a-248	Red cell distribution width    id:ebi-a-GCST006804	Weighted mode	122	0.01128028	0.01217303	0.35594689
id.exposure	id.outcome	outcome	exposure	method	nsnp	b	se	pval
ieu-a-302	ukb-a-248	Body mass index (BMI)    id:ukb-a-248	Triglycerides    id:ieu-a-302	MR Egger	55	-0.0445751	0.03601334	0.22126815
ieu-a-302	ukb-a-248	Body mass index (BMI)    id:ukb-a-248	Triglycerides    id:ieu-a-302	Weighted median	55	-0.0315603	0.01590831	0.04726817
ieu-a-302	ukb-a-248	Body mass index (BMI)    id:ukb-a-248	Triglycerides    id:ieu-a-302	Inverse variance weighted	55	-0.0214287	0.02233545	0.33735629
ieu-a-302	ukb-a-248	Body mass index (BMI)    id:ukb-a-248	Triglycerides    id:ieu-a-302	Simple mode	55	-0.0456892	0.02952211	0.1275531
ieu-a-302	ukb-a-248	Body mass index (BMI)    id:ukb-a-248	Triglycerides    id:ieu-a-302	Weighted mode	55	-0.0297723	0.01209893	0.01709375

id.exposure	id.outcome	outcome	exposure	method	nsnp	b	se	pval
ieu-b-30	ukb-a-248	Body mass index (BMI)    id:ukb-a-248	white blood cell count    id:ieu-b-30	MR Egger	475	-0.0347487	0.02445 633	0.15602 056
ieu-b-30	ukb-a-248	Body mass index (BMI)    id:ukb-a-248	white blood cell count    id:ieu-b-30	Weighted median	475	-0.0307482	0.01204 555	0.01069 025
ieu-b-30	ukb-a-248	Body mass index (BMI)    id:ukb-a-248	white blood cell count    id:ieu-b-30	Inverse variance weighted	475	-0.040535	0.01168 163	0.00052 05
ieu-b-30	ukb-a-248	Body mass index (BMI)    id:ukb-a-248	white blood cell count    id:ieu-b-30	Simple mode	475	0.00133145	0.03782 675	0.97193 623
ieu-b-30	ukb-a-248	Body mass index (BMI)    id:ukb-a-248	white blood cell count    id:ieu-b-30	Weighted mode	475	-0.0184754	0.02085 621	0.37614 876
id.exposure	id.outcome	outcome	exposure	method	nsnp	b	se	pval
ukb-d-30830_raw	ieu-b-40	body mass index    id:ieu-b-40	SHBG    id:ukb-d-30830_raw	MR Egger	135	0.00121356	0.00180 979	0.50366 715
ukb-d-30830_raw	ieu-b-40	body mass index    id:ieu-b-40	SHBG    id:ukb-d-30830_raw	Weighted median	135	0.00102542	0.00037 386	0.00609 279
ukb-d-30830_raw	ieu-b-40	body mass index    id:ieu-b-40	SHBG    id:ukb-d-30830_raw	Inverse variance weighted	135	-0.002129	0.00115 3	0.06482 013
ukb-d-30830_raw	ieu-b-40	body mass index    id:ieu-b-40	SHBG    id:ukb-d-30830_raw	Simple mode	135	-0.0011256	0.00124 723	0.36841 147

**Table 5S. 2S-MR results with vigorous physical activity as exposure and blood biomarkers as outcomes**

id.exposure	id.outcome	outcome	exposure	method	nsnp	b	se	pval
ebi-a-GCST006098	ebi-a-GCST005068	LDL cholesterol    id:ebi-a-GCST005068	Vigorous physical activity    id:ebi-a-GCST006098	MR Egger	7	4.55735741	5.397582	0.437005
							61	89
ebi-a-GCST006098	ebi-a-GCST005068	LDL cholesterol    id:ebi-a-GCST005068	Vigorous physical activity    id:ebi-a-GCST006098	Weighted median	7	-0.6208293	0.838434	0.459019
							47	39
ebi-a-GCST006098	ebi-a-GCST005068	LDL cholesterol    id:ebi-a-GCST005068	Vigorous physical activity    id:ebi-a-GCST006098	Inverse variance weighted	7	-0.2426177	0.660161	0.713236
							46	61
ebi-a-GCST006098	ebi-a-GCST005068	LDL cholesterol    id:ebi-a-GCST005068	Vigorous physical activity    id:ebi-a-GCST006098	Simple mode	7	-1.231375	1.532513	0.452333
							13	86
ebi-a-GCST006098	ebi-a-GCST005068	LDL cholesterol    id:ebi-a-GCST005068	Vigorous physical activity    id:ebi-a-GCST006098	Weighted mode	7	-1.0821029	1.017395	0.328430
							34	07
ebi-a-GCST006098	ieu-a-1050	Ferritin    id:ieu-a-1050	Vigorous physical activity    id:ebi-a-GCST006098	MR Egger	5	-5.2248204	5.495151	0.411848
							03	23
ebi-a-GCST006098	ieu-a-1050	Ferritin    id:ieu-a-1050	Vigorous physical activity    id:ebi-a-GCST006098	Weighted median	5	-0.7040971	0.647521	0.276872
							49	22
ebi-a-GCST006098	ieu-a-1050	Ferritin    id:ieu-a-1050	Vigorous physical activity    id:ebi-a-GCST006098	Inverse variance weighted	5	-0.1408587	0.767230	0.854332
							61	25
ebi-a-GCST006098	ieu-a-1050	Ferritin    id:ieu-a-1050	Vigorous physical activity    id:ebi-a-GCST006098	Simple mode	5	-0.8515134	0.843286	0.369732
							04	73
ebi-a-GCST006098	ieu-a-1050	Ferritin    id:ieu-a-1050	Vigorous physical activity    id:ebi-a-GCST006098	Weighted mode	5	-0.9327437	0.769158	0.291972
							52	96
ebi-a-GCST006098	ieu-a-302	Triglycerides    id:ieu-a-302	Vigorous physical activity    id:ebi-a-GCST006098	MR Egger	5	-1.4775783	1.334354	0.348955
							04	32
ebi-a-GCST006098	ieu-a-302	Triglycerides    id:ieu-a-302	Vigorous physical activity    id:ebi-a-GCST006098	Weighted median	5	-0.1485007	0.262002	0.570856
							58	3
ebi-a-GCST006098	ieu-a-302	Triglycerides    id:ieu-a-302	Vigorous physical activity    id:ebi-a-GCST006098	Inverse variance weighted	5	-0.0745059	0.221142	0.736182
							62	24
ebi-a-GCST006098	ieu-a-302	Triglycerides    id:ieu-a-302	Vigorous physical activity    id:ebi-a-GCST006098	Simple mode	5	-0.1338663	0.368514	0.734794
							73	89
ebi-a-GCST006098	ieu-a-302	Triglycerides    id:ieu-a-302	Vigorous physical activity    id:ebi-a-GCST006098	Weighted mode	5	-0.1563444	0.328858	0.659289
							88	19
ebi-a-GCST006098	ukb-b-11349	Folate    id:ukb-b-11349	Vigorous physical activity    id:ebi-a-GCST006098	MR Egger	7	0.44992252	2.058173	0.835602
							78	06
ebi-a-GCST006098	ukb-b-11349	Folate    id:ukb-b-11349	Vigorous physical activity    id:ebi-a-GCST006098	Weighted median	7	-0.2016639	0.320053	0.528633
							64	09
ebi-a-GCST006098	ukb-b-11349	Folate    id:ukb-b-11349	Vigorous physical activity    id:ebi-a-GCST006098	Inverse variance weighted	7	-0.2577298	0.244615	0.292060
							28	17
ebi-a-GCST006098	ukb-b-11349	Folate    id:ukb-b-11349	Vigorous physical activity    id:ebi-a-GCST006098	Simple mode	7	0.0568742	0.467024	0.907049
							35	56
ebi-a-GCST006098	ukb-b-11349	Folate    id:ukb-b-11349	Vigorous physical activity    id:ebi-a-GCST006098	Weighted mode	7	0.07601041	0.465339	0.875610
							68	65

ebi-a-GCST006098	ukb-d-30070_irnt	Red blood cell (erythrocyte) distribution width    id:ukb-d-30070_irnt	Vigorous physical activity    id:ebi-a-GCST006098	MR Egger	7	1.57820562	1.795700 92	0.419691 32
ebi-a-GCST006098	ukb-d-30070_irnt	Red blood cell (erythrocyte) distribution width    id:ukb-d-30070_irnt	Vigorous physical activity    id:ebi-a-GCST006098	Weighted median	7	-0.0549663	0.143906 26	0.702491 75
ebi-a-GCST006098	ukb-d-30070_irnt	Red blood cell (erythrocyte) distribution width    id:ukb-d-30070_irnt	Vigorous physical activity    id:ebi-a-GCST006098	Inverse variance weighted	7	-0.2321729	0.213298 82	0.276380 26
ebi-a-GCST006098	ukb-d-30070_irnt	Red blood cell (erythrocyte) distribution width    id:ukb-d-30070_irnt	Vigorous physical activity    id:ebi-a-GCST006098	Simple mode	7	-0.0408618	0.177334 68	0.825419 27
ebi-a-GCST006098	ukb-d-30070_irnt	Red blood cell (erythrocyte) distribution width    id:ukb-d-30070_irnt	Vigorous physical activity    id:ebi-a-GCST006098	Weighted mode	7	-0.0920344	0.182147 56	0.631385 89
ebi-a-GCST006098	ukb-d-30830_irnt	SHBG    id:ukb-d-30830_irnt	Vigorous physical activity    id:ebi-a-GCST006098	MR Egger	7	0.46503747	1.973712 9	0.823077 52
ebi-a-GCST006098	ukb-d-30830_irnt	SHBG    id:ukb-d-30830_irnt	Vigorous physical activity    id:ebi-a-GCST006098	Weighted median	7	0.11870029	0.151914 89	0.434590 52
ebi-a-GCST006098	ukb-d-30830_irnt	SHBG    id:ukb-d-30830_irnt	Vigorous physical activity    id:ebi-a-GCST006098	Inverse variance weighted	7	0.33282495	0.213695 39	0.119358 06
ebi-a-GCST006098	ukb-d-30830_irnt	SHBG    id:ukb-d-30830_irnt	Vigorous physical activity    id:ebi-a-GCST006098	Simple mode	7	0.07719013	0.190096 22	0.698784 8
ebi-a-GCST006098	ukb-d-30830_irnt	SHBG    id:ukb-d-30830_irnt	Vigorous physical activity    id:ebi-a-GCST006098	Weighted mode	7	0.08827653	0.182289 32	0.645365 99

### Tests for horizontal pleiotropy

id.exposure	id.outcome	outcome	exposure	Egger intercept	se	pval
ebi-a-GCST006098	ebi-a-GCST005068	LDL cholesterol    id:ebi-a-GCST005068	Vigorous physical activity    id:ebi-a-GCST006098	-0.0463331	0.051710 55	0.411305 82
ebi-a-GCST006098	ieu-a-1050	Ferritin    id:ieu-a-1050	Vigorous physical activity    id:ebi-a-GCST006098	0.04824757	0.051622 26	0.418926 33
ebi-a-GCST006098	ieu-a-302	Triglycerides    id:ieu-a-302	Vigorous physical activity    id:ebi-a-GCST006098	0.01391277	0.013048 39	0.364507 21
ebi-a-GCST006098	ukb-b-11349	Folate    id:ukb-b-11349	Vigorous physical activity    id:ebi-a-GCST006098	-0.0065813	0.019005 84	0.743228 24
ebi-a-GCST006098	ukb-d-30070_irnt	Red blood cell (erythrocyte) distribution width    id:ukb-d-30070_irnt	Vigorous physical activity    id:ebi-a-GCST006098	-0.0168346	0.016580 53	0.356535 74
ebi-a-GCST006098	ukb-d-30830_irnt	SHBG    id:ukb-d-30830_irnt	Vigorous physical activity    id:ebi-a-GCST006098	-0.0012295	0.018225 48	0.948828 18

**Table 6S. 2S-MR results with vigorous physical activity as exposure and blood biomarkers as outcomes**

id.exposure	id.outcome	outcome	exposure	method	nsn			pval
					p	b	se	
ebi-a-GCST006098	ukb-b-10217	Sweets intake    id:ukb-b-10217	Vigorous physical activity    id:ebi-a-GCST006098	MR Egger	7	0.0903539	1.5078935	0.95454011
ebi-a-GCST006098	ukb-b-10217	Sweets intake    id:ukb-b-10217	Vigorous physical activity    id:ebi-a-GCST006098	Weighted median	7	0.2367422	0.21224606	0.26467304
ebi-a-GCST006098	ukb-b-10217	Sweets intake    id:ukb-b-10217	Vigorous physical activity    id:ebi-a-GCST006098	Inverse variance weighted	7	0.1760505	0.17921106	0.32592043
ebi-a-GCST006098	ukb-b-10217	Sweets intake    id:ukb-b-10217	Vigorous physical activity    id:ebi-a-GCST006098	Simple mode	7	0.2770321	0.31802813	0.41719033
ebi-a-GCST006098	ukb-b-10217	Sweets intake    id:ukb-b-10217	Vigorous physical activity    id:ebi-a-GCST006098	Weighted mode	7	0.2596458	0.31161898	0.43662814
ebi-a-GCST006098	ukb-b-11679	Type of special diet followed: Vegetarian    id:ukb-b-11679	Vigorous physical activity    id:ebi-a-GCST006098	MR Egger	6		0.30989332	0.88272515054
ebi-a-GCST006098	ukb-b-11679	Type of special diet followed: Vegetarian    id:ukb-b-11679	Vigorous physical activity    id:ebi-a-GCST006098	Weighted median	6		0.02203046	0.0642637884
ebi-a-GCST006098	ukb-b-11679	Type of special diet followed: Vegetarian    id:ukb-b-11679	Vigorous physical activity    id:ebi-a-GCST006098	Inverse variance weighted	6		0.02308089	0.04874316178
ebi-a-GCST006098	ukb-b-11679	Type of special diet followed: Vegetarian    id:ukb-b-11679	Vigorous physical activity    id:ebi-a-GCST006098	Simple mode	6		0.02147452	0.10369298404
ebi-a-GCST006098	ukb-b-11679	Type of special diet followed: Vegetarian    id:ukb-b-11679	Vigorous physical activity    id:ebi-a-GCST006098	Weighted mode	6		0.02451679	0.09506696012
ebi-a-GCST006098	ukb-b-1996	Salad / raw vegetable intake    id:ukb-b-1996	Vigorous physical activity    id:ebi-a-GCST006098	MR Egger	7		0.66619702	1.2339482007
ebi-a-GCST006098	ukb-b-1996	Salad / raw vegetable intake    id:ukb-b-1996	Vigorous physical activity    id:ebi-a-GCST006098	Weighted median	7	0.5139604	0.10299379	6.03E-07
ebi-a-GCST006098	ukb-b-1996	Salad / raw vegetable intake    id:ukb-b-1996	Vigorous physical activity    id:ebi-a-GCST006098	Inverse variance weighted	7	0.5044851	0.13388668	0.00016456
ebi-a-GCST006098	ukb-b-1996	Salad / raw vegetable intake    id:ukb-b-1996	Vigorous physical activity    id:ebi-a-GCST006098	Simple mode	7	0.6270295	0.14130406	0.00438784

<b>ebi-a-GCST006098</b>	<b>ukb-b-1996</b>	<b>Salad / raw vegetable intake    id:ukb-b-1996</b>	<b>Vigorous physical activity    id:ebi-a-GCST006098</b>	<b>Weighted mode</b>	<b>7</b>	<b>0.58940834</b>	<b>0.1467562</b>	<b>0.00698862</b>
<b>ebi-a-GCST006098</b>	ukb-b-2209	Oily fish intake    id:ukb-b-2209	Vigorous physical activity    id:ebi-a-GCST006098	MR Egger	7	0.95472369	2.00996591	0.65481403
<b>ebi-a-GCST006098</b>	ukb-b-2209	Oily fish intake    id:ukb-b-2209	Vigorous physical activity    id:ebi-a-GCST006098	Weighted median	7	0.53975424	0.15310124	0.00042273
<b>ebi-a-GCST006098</b>	ukb-b-2209	Oily fish intake    id:ukb-b-2209	Vigorous physical activity    id:ebi-a-GCST006098	Inverse variance weighted	7	0.48170818	0.21898245	0.02782414
<b>ebi-a-GCST006098</b>	ukb-b-2209	Oily fish intake    id:ukb-b-2209	Vigorous physical activity    id:ebi-a-GCST006098	Simple mode	7	0.82403974	0.20581323	0.00708805
<b>ebi-a-GCST006098</b>	ukb-b-2209	Oily fish intake    id:ukb-b-2209	Vigorous physical activity    id:ebi-a-GCST006098	Weighted mode	7	0.78663663	0.29210032	0.03590724
<b>ebi-a-GCST006098</b>	ukb-b-3881	Fresh fruit intake    id:ukb-b-3881	Vigorous physical activity    id:ebi-a-GCST006098	MR Egger	7	1.30879467	1.11224869	0.29227451
<b>ebi-a-GCST006098</b>	ukb-b-3881	Fresh fruit intake    id:ukb-b-3881	Vigorous physical activity    id:ebi-a-GCST006098	Weighted median	7	0.46001672	0.08901784	2.37E-07
<b>ebi-a-GCST006098</b>	ukb-b-3881	Fresh fruit intake    id:ukb-b-3881	Vigorous physical activity    id:ebi-a-GCST006098	Inverse variance weighted	7	0.38633487	0.12863774	0.00267088
<b>ebi-a-GCST006098</b>	ukb-b-3881	Fresh fruit intake    id:ukb-b-3881	Vigorous physical activity    id:ebi-a-GCST006098	Simple mode	7	0.59733916	0.1169325	0.00220313
<b>ebi-a-GCST006098</b>	ukb-b-3881	Fresh fruit intake    id:ukb-b-3881	Vigorous physical activity    id:ebi-a-GCST006098	Weighted mode	7	0.58037912	0.12022717	0.00291812
<b>ebi-a-GCST006098</b>	ukb-b-4616	Nap during day    id:ukb-b-4616	Vigorous physical activity    id:ebi-a-GCST006098	MR Egger	7	-1.8168346	0.8575858	0.08766702



<b>ebi-a-GCST006098</b>	<b>ukb-b-4616</b>	<b>Nap during day    id:ukb-b-4616</b>	<b>Vigorous physical activity    id:ebi-a-GCST006098</b>	<b>Weighted median</b>	<b>7</b>	<b>-0.3203349</b>	<b>0.09563</b>	<b>0.00080</b>
							<b>435</b>	<b>934</b>
<b>ebi-a-GCST006098</b>	ukb-b-4616	Nap during day    id:ukb-b-4616	Vigorous physical activity    id:ebi-a-GCST006098	Inverse variance weighted	7	-0.1836272	0.12240	0.13356
							112	03
<b>ebi-a-GCST006098</b>	ukb-b-4616	Nap during day    id:ukb-b-4616	Vigorous physical activity    id:ebi-a-GCST006098	Simple mode	7	-0.3872459	0.12727	0.02272
							48	693
<b>ebi-a-GCST006098</b>	ukb-b-4616	Nap during day    id:ukb-b-4616	Vigorous physical activity    id:ebi-a-GCST006098	Weighted mode	7	-0.3872459	0.11249	0.01375
							117	948
<b>ebi-a-GCST006098</b>	ukb-b-6324	Processed meat intake    id:ukb-b-6324	Vigorous physical activity    id:ebi-a-GCST006098	MR Egger	7	0.06859678	1.00946	0.94845
							468	629
<b>ebi-a-GCST006098</b>	ukb-b-6324	Processed meat intake    id:ukb-b-6324	Vigorous physical activity    id:ebi-a-GCST006098	Weighted median	7	-0.6292381	0.13853	5.57E-
							861	06
<b>ebi-a-GCST006098</b>	ukb-b-6324	Processed meat intake    id:ukb-b-6324	Vigorous physical activity    id:ebi-a-GCST006098	Inverse variance weighted	7	-0.5496216	0.11346	1.27E-
							205	06
<b>ebi-a-GCST006098</b>	ukb-b-6324	Processed meat intake    id:ukb-b-6324	Vigorous physical activity    id:ebi-a-GCST006098	Simple mode	7	-0.6879646	0.21816	0.01972
							478	901
<b>ebi-a-GCST006098</b>	ukb-b-6324	Processed meat intake    id:ukb-b-6324	Vigorous physical activity    id:ebi-a-GCST006098	Weighted mode	7	-0.6939066	0.21655	0.01850
							974	116

Tests for horizontal pleiotropy

id.exposure	id.outcome	outcome	exposure	Egger intercept	se	pval
ebi-a-GCST006098	ukb-b-10217	Sweets intake    id:ukb-b-10217	Vigorous physical activity    id:ebi-a-GCST006098	-0.000797	0.01392 445	0.95657 282
ebi-a-GCST006098	ukb-b-11679	Type of special diet followed: Vegetarian    id:ukb-b-11679	Vigorous physical activity    id:ebi-a-GCST006098	-0.0025594	0.00786 299	0.76112 246
ebi-a-GCST006098	ukb-b-1996	Salad / raw vegetable intake    id:ukb-b-1996	Vigorous physical activity    id:ebi-a-GCST006098	-0.0015039	0.01139 436	0.90014 308
ebi-a-GCST006098	ukb-b-2209	Oily fish intake    id:ukb-b-2209	Vigorous physical activity    id:ebi-a-GCST006098	-0.0043991	0.01856 093	0.82205 339
ebi-a-GCST006098	ukb-b-3881	Fresh fruit intake    id:ukb-b-3881	Vigorous physical activity    id:ebi-a-GCST006098	-0.0085789	0.01027 085	0.44163 822
ebi-a-GCST006098	ukb-b-4616	Nap during day    id:ukb-b-4616	Vigorous physical activity    id:ebi-a-GCST006098	0.01518897	0.00791 926	0.11322 178
ebi-a-GCST006098	ukb-b-6324	Processed meat intake    id:ukb-b-6324	Vigorous physical activity    id:ebi-a-GCST006098	-0.0057496	0.00932 2	0.56437 631

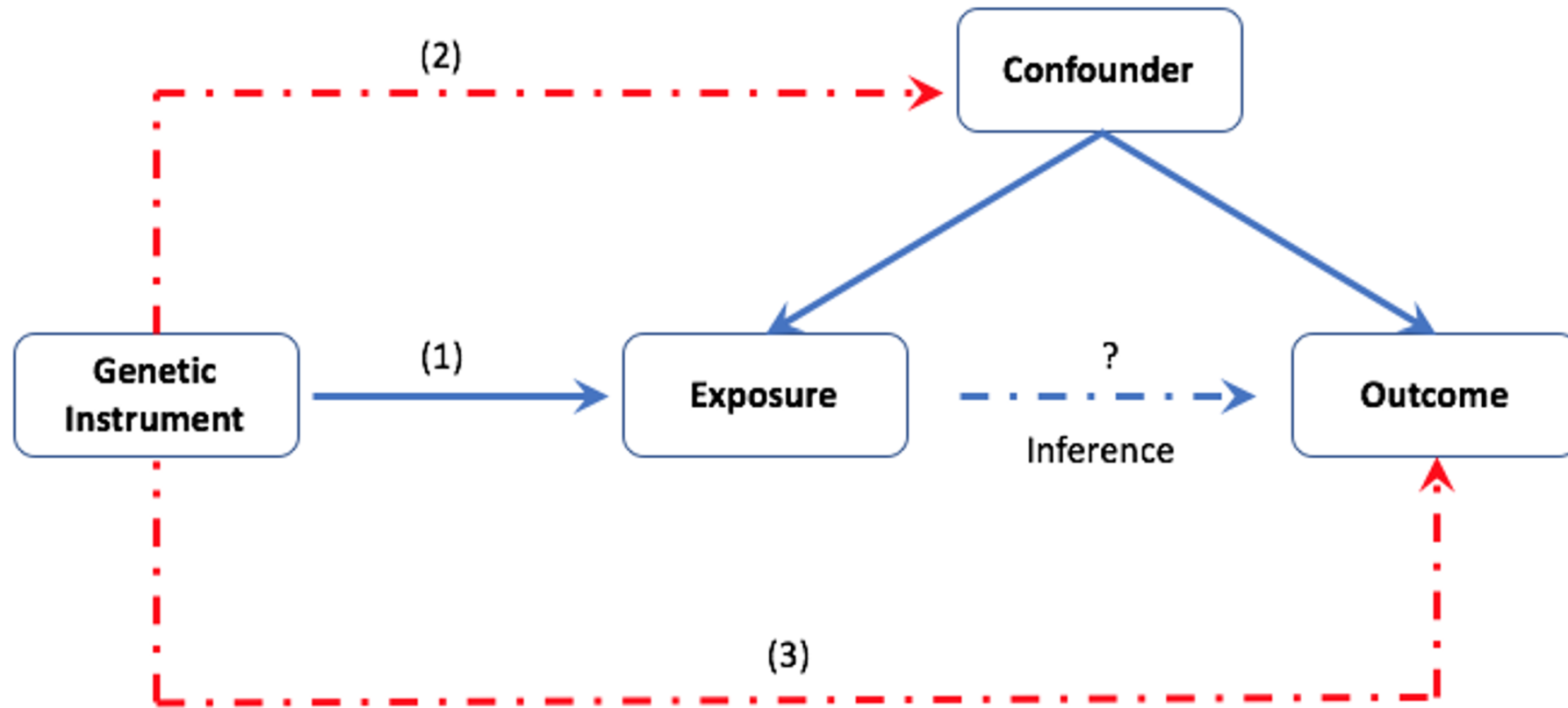
**Table 7S. 2S-MR with healthy/unhealthy dietary habits as exposures and vigorous physical activity as outcome to assess reverse causality**

id.exposure	id.outcome	outcome	exposure	method	nsn		se	pval
					p	b		
ukb-b-1996	ebi-a-	Vigorous physical activity	Salad / raw vegetable intake		2			0.26681
	GCST006098	id:ebi-a-GCST006098	id:ukb-b-1996	MR Egger	0	0.3848011	0.33578299	018
ukb-b-1996	ebi-a-	Vigorous physical activity	Salad / raw vegetable intake		2	0.2725700		7.19E-
	GCST006098	id:ebi-a-GCST006098	id:ukb-b-1996	Weighted median	0		2 0.06073408	06
ukb-b-1996	ebi-a-	Vigorous physical activity	Salad / raw vegetable intake		2	0.3160797		1.50E-
	GCST006098	id:ebi-a-GCST006098	id:ukb-b-1996	Inverse variance weighted	0		5 0.0657002	06
ukb-b-1996	ebi-a-	Vigorous physical activity	Salad / raw vegetable intake		2	0.3937231		0.01570
	GCST006098	id:ebi-a-GCST006098	id:ukb-b-1996	Simple mode	0		5 0.14841231	282
ukb-b-1996	ebi-a-	Vigorous physical activity	Salad / raw vegetable intake		2	0.3979305		0.02773
	GCST006098	id:ebi-a-GCST006098	id:ukb-b-1996	Weighted mode	0		4 0.16695029	826
ukb-b-6324	ebi-a-	Vigorous physical activity	Processed meat intake    id:ukb-b-		2	0.1350953		0.44748
	GCST006098	id:ebi-a-GCST006098	6324	MR Egger	3		3 0.17451244	219
ukb-b-6324	ebi-a-	Vigorous physical activity	Processed meat intake    id:ukb-b-		2			0.04105
	GCST006098	id:ebi-a-GCST006098	6324	Weighted median	3	0.0754533	0.03693307	493
ukb-b-6324	ebi-a-	Vigorous physical activity	Processed meat intake    id:ukb-b-		2			0.00366
	GCST006098	id:ebi-a-GCST006098	6324	Inverse variance weighted	3	0.1085666	0.03736846	899
ukb-b-6324	ebi-a-	Vigorous physical activity	Processed meat intake    id:ukb-b-		2			0.51295
	GCST006098	id:ebi-a-GCST006098	6324	Simple mode	3	0.0569462	0.08563101	016
ukb-b-6324	ebi-a-	Vigorous physical activity	Processed meat intake    id:ukb-b-		2			0.64000
	GCST006098	id:ebi-a-GCST006098	6324	Weighted mode	3	0.0357803	0.07544894	771
ukb-b-4616	ebi-a-	Vigorous physical activity			8			0.15504
	GCST006098	id:ebi-a-GCST006098	Nap during day    id:ukb-b-4616	MR Egger	9	0.1310942	0.09139345	488
ukb-b-4616	ebi-a-	Vigorous physical activity			8			0.05443
	GCST006098	id:ebi-a-GCST006098	Nap during day    id:ukb-b-4616	Weighted median	9	0.0537114	0.0279262	828
ukb-b-4616	ebi-a-	Vigorous physical activity			8			0.00877
	GCST006098	id:ebi-a-GCST006098	Nap during day    id:ukb-b-4616	Inverse variance weighted	9	0.0652623	0.02490192	309
ukb-b-4616	ebi-a-	Vigorous physical activity			8			0.33792
	GCST006098	id:ebi-a-GCST006098	Nap during day    id:ukb-b-4616	Simple mode	9	0.0625663	0.0649349	525
ukb-b-4616	ebi-a-	Vigorous physical activity			8			0.38264
	GCST006098	id:ebi-a-GCST006098	Nap during day    id:ukb-b-4616	Weighted mode	9	0.0482764	0.05502095	819
ukb-b-3881	ebi-a-	Vigorous physical activity			5			0.82694
	GCST006098	id:ebi-a-GCST006098	Fresh fruit intake    id:ukb-b-3881	MR Egger	3	0.0277245	0.12616196	037

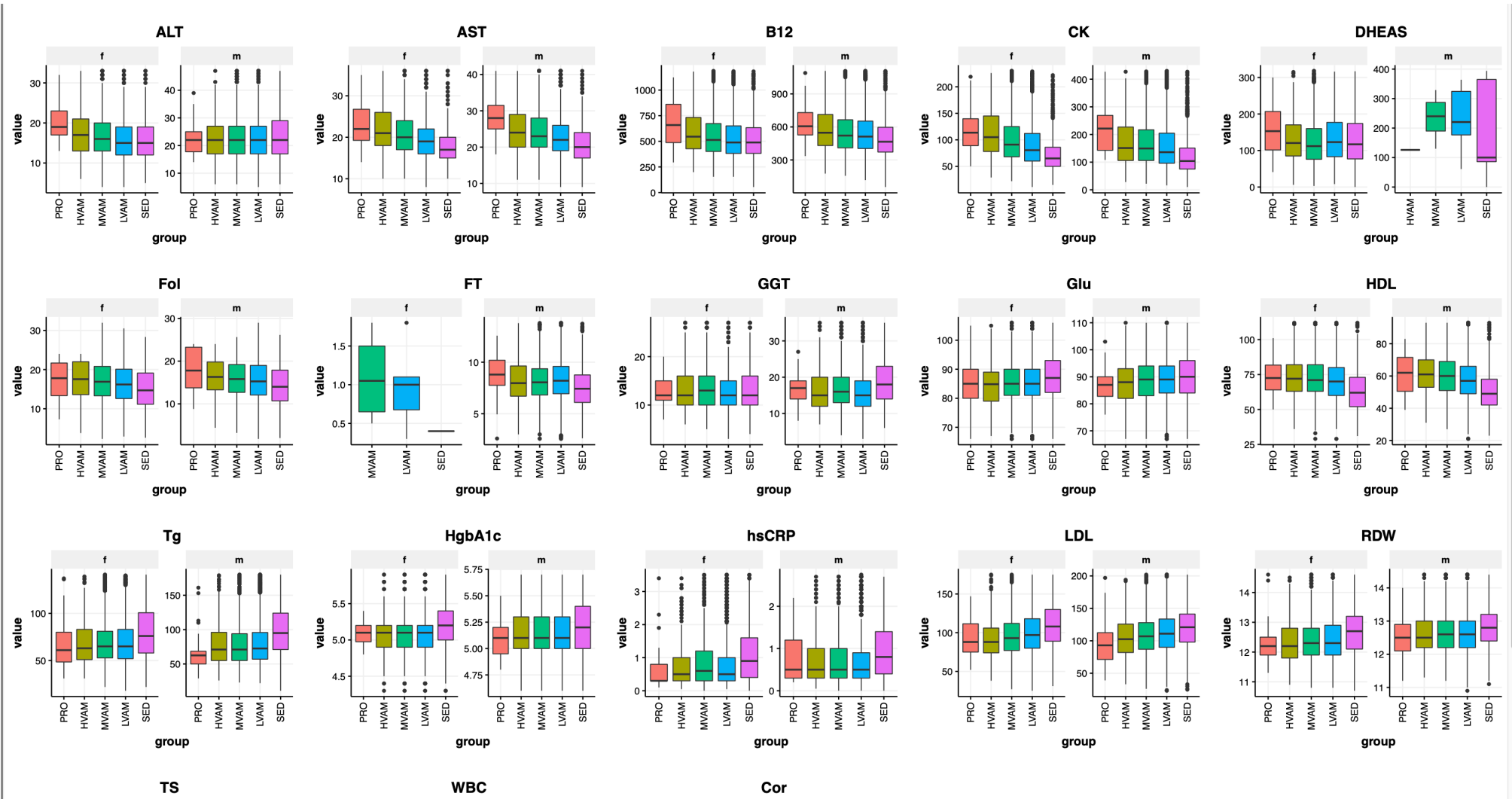
<b>ukb-b-3881</b>	<b>ebi-a-GCST006098</b>	<b>Vigorous physical activity   </b>	<b>Fresh fruit intake   </b>	<b>Weighted median</b>	<b>53</b>	<b>0.16136177</b>	<b>63</b>	<b>0.03846</b>	<b>2.73E-05</b>
<b>ukb-b-3881</b>	ebi-a-GCST006098	Vigorous physical activity	Fresh fruit intake	Inverse variance weighted	53	0.2103584	867	0.03697	1.28E-08
<b>ukb-b-3881</b>	ebi-a-GCST006098	Vigorous physical activity	Fresh fruit intake	Simple mode	53	0.16760638	947	0.09363	0.07929
<b>ukb-b-3881</b>	ebi-a-GCST006098	Vigorous physical activity	Fresh fruit intake	Weighted mode	53	0.14738639	063	0.08743	0.09783

### Tests for horizontal pleiotropy

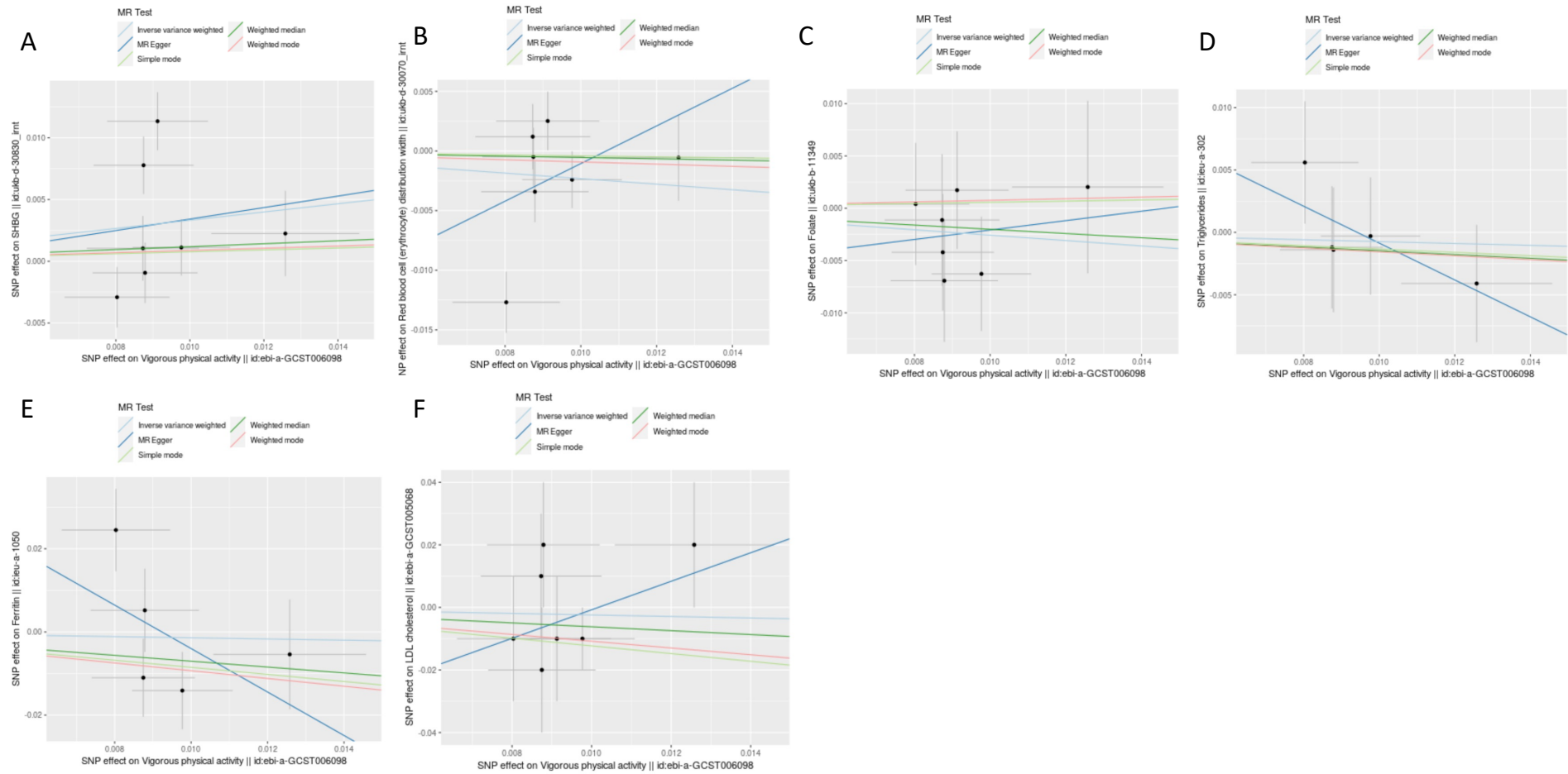
<b>id.exposure</b>	<b>id.outcome</b>	<b>outcome</b>	<b>exposure</b>	<b>Egger intercept</b>	<b>se</b>	<b>pval</b>
<b>ukb-b-1996</b>	ebi-a-GCST006098	Vigorous physical activity	Salad / raw vegetable intake    id:ukb-b-1996	-0.0007564	0.00362056	0.83686113
<b>ukb-b-6324</b>	ebi-a-GCST006098	Vigorous physical activity	Processed meat intake    id:ukb-b-6324	-0.0037415	0.00262036	0.16803755
<b>ukb-b-4616</b>	ebi-a-GCST006098	Vigorous physical activity	Nap during day    id:ukb-b-4616	0.00064846	0.00086601	0.45600425
<b>ukb-b-3881</b>	ebi-a-GCST006098	Vigorous physical activity	Fresh fruit intake    id:ukb-b-3881	0.00227091	0.00115335	0.05440223



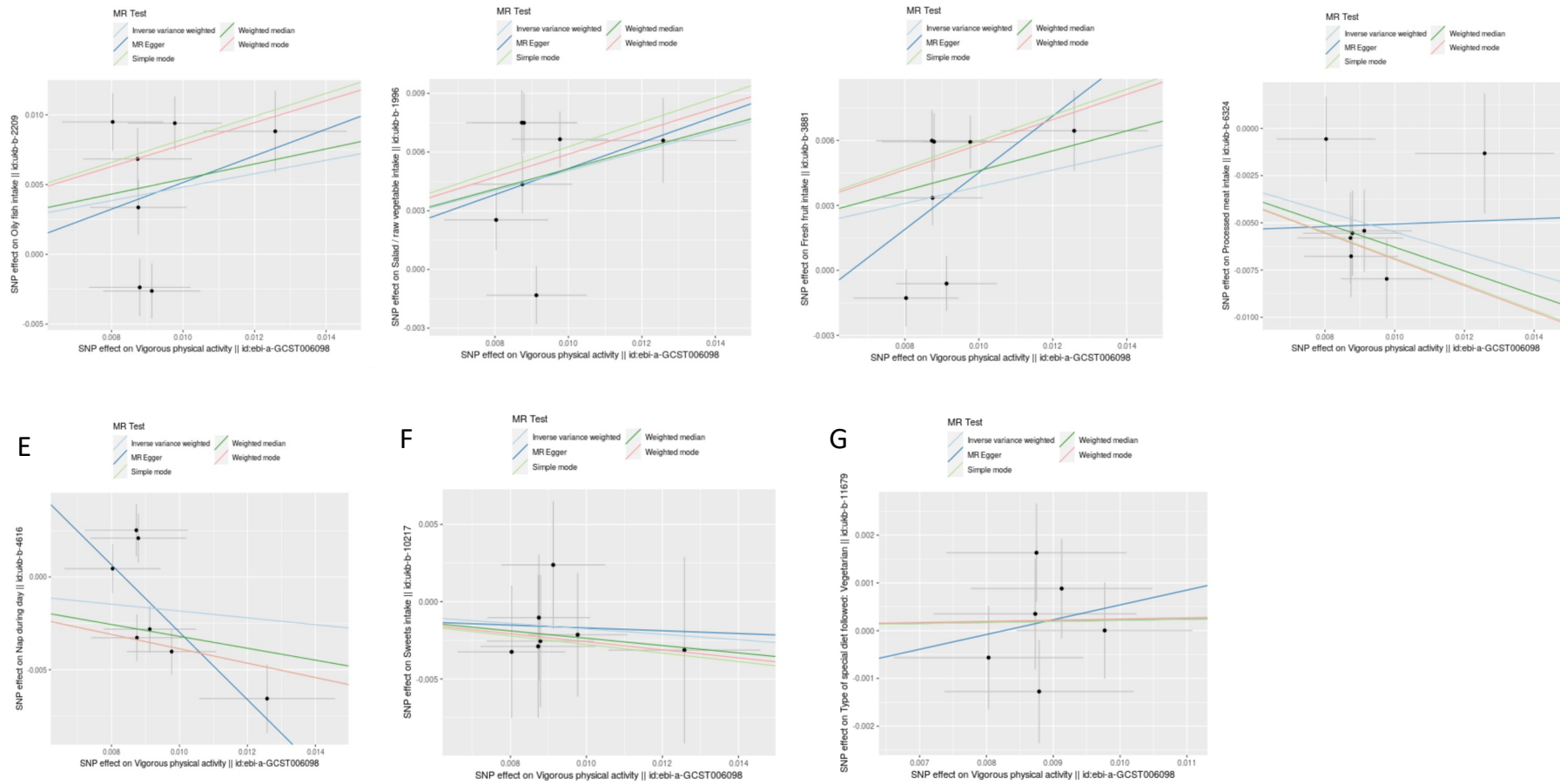
**Figure 1S.** Assumptions of Mendelian randomization: (1) the genetic instrument is associated with the exposure. (2) the genetic instrument should not associate with a confounder. (3) the genetic instrument should affect the outcome only via the exposure.



**Figure 2S.** Blood biomarker levels with respect to self-reported running volume and professional athletes in males (m) and females (f).

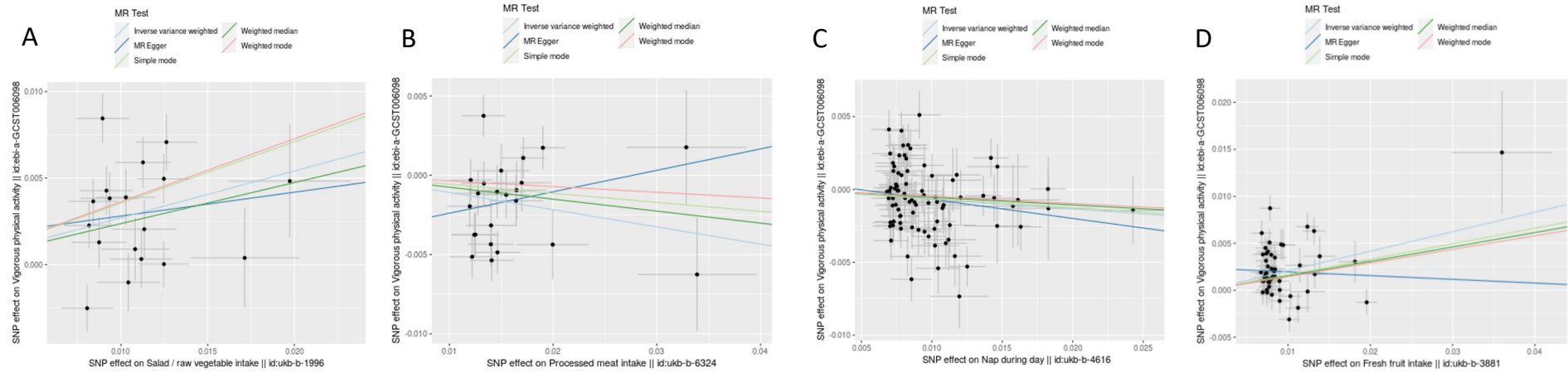


**Figure 3S.** 2S-MR scatter plot showing effects of vigorous physical activity as the exposure on (A) SHBG (B) Red blood cell count (C) Folate (D) Triglycerides (E) Ferritin (F) LDL as outcomes (see Table 5S for statistical significance).



**Figure 4S.** 2S-MR scatter plot showing effects of vigorous physical activity as the exposure on (A) oily fish consumption (B) salad intake (C) fresh fruit intake (D) processed meat intake (E) daytime napping (F) sweets intake (G) vegetarian diet (see Table 6S for statistical significance).





**Figure 5S.** 2S-MR scatter plot showing effects of dietary behaviors as the exposures on vigorous physical activity: (A) salad intake (B) processed meat intake (C) daytime napping (D) fresh fruit intake (see Table 7S for statistical significance).